



Quick-Start Guide



Switlik Survival Product's
CORD Gen II Crew Overboard Rescue Device
Quick-Start Guide

This publication is issued as the Quick-Start Guide for the Switlik Survival Product's **CORD** Gen II CREW OVERBOARD RESCUE DEVICE, part number S-4161-2.

All rights reserved.

Copyright © 2019 by Switlik Parachute Company, Inc.

This manual may not be reproduced in whole or in part, by any means, without permission. For information, address all questions to:

Switlik Parachute Company
1325 E. State Street
Trenton, NJ 08607
(609) 587-3300
(609) 586-6647 FAX
www.switlik.com



Switlik Survival Product's
CORD Gen II Crew Overboard Rescue Device
Quick-Start Guide

WARNINGS

WARNING! Read these instructions fully before use. Failure to do so may result in injury or death.

WARNING! This device must be used in accordance with the instructions in this manual for maximum performance. Failure to comply with instructions could result in a lower level of performance or in failure of the device, which could result in death. Under some circumstances, even if used properly this device may not save your life.

WARNING! Do not inflate this device orally via the included oral inflation tubes and then pull the inflation tab. This could cause injury and may overstress the buoyancy chamber.

WARNING! This device is **not** designed to satisfy the requirements of a life raft for extended durations. This unit is designed for man-overboard or individual rescue operations.

WARNING! This unit requires limited periodic maintenance to ensure operation in an emergency. Do not use this unit if it has not been properly maintained. See "Care and Maintenance" section for additional details.

WARNING! Do not open or otherwise disassemble this device until needed. Maintenance should be performed only when needed. See "Care and Maintenance" section for additional details.

WARNING! Never use this device if it has obvious damage.



Switlik Survival Product's
CORD Gen II Crew Overboard Rescue Device
Quick-Start Guide

Description

The Switlik Survival Product's **CORD** Gen II CREW OVERBOARD RESCUE DEVICE is designed to rescue a man overboard victim. The device consists of an underarm flotation device (UFD) that provides buoyancy to the victim and also acts as a lifting sling to pull the victim back onto the boat. One hundred fifty feet of floating line is connected from the flotation device and is anchored to the boat with a quick-disconnect shackle. The crew on the boat can use this line to retrieve the victim.

The device includes stainless steel lifting rings paired with tubular webbing that can easily support one or two victims in the event where hoisting is necessary. The floating line is visible in the water and the unit can be deployed in seconds to get the victim out of the water as quickly as possible.

The unit can be rearmed and repacked by the user.

In the event of a man overboard, alert the crew and begin your planned man overboard procedure. Slow the boat, then lift the red flap on top of the **CORD** valise. Under the flap is a red inflation pull tab. Pull the tab upwards with a quick jerk. The flotation device inside will inflate and release itself from the valise. The 150' of attached line pays out with it. Circle the man overboard until contact is made with the victim and the flotation device. At this point, perform a quick stop maneuver, and begin pulling the victim in via the retrieval line. Once alongside the boat, reach down and pull the victim aboard. On boats with high freeboard, connect hoisting tackle to the lifting rings of the flotation device and hoist the victim aboard.



Mounting Instructions

The **CORD** must be installed vertically, outside the toerail, in a location free of obstructions or possible entanglements. It is critical to the operation of the **CORD** that there be a clear path between the bottom of the valise and the water to allow the underarm flotation device to fall freely without becoming entangled.

On most boats the best location is outboard on the stern pulpit. However, if hull design or fittings on the transom impede the free deployment of the device into the water, installation on the quarter is possible. The problem with quarter-mounting is that there is danger of damaging the **CORD** during maneuvers at the dock.

The ideal location is at the intersections of all vertical and upper horizontal members of the pulpit rail. Note how the line from the **CORD** unit is secured to the stanchion with a snap shackle.





This mounting will work with either a rail or a cable (lifeline).



Even an angled stanchion will work.



If this location is not available, the **CORD** unit may be mounted on parallel rails. The lower rail attachment can be made with either the lacing flap, the lacing flap cord or with the snap shackle on the floating line, depending on the distance between the two rails.

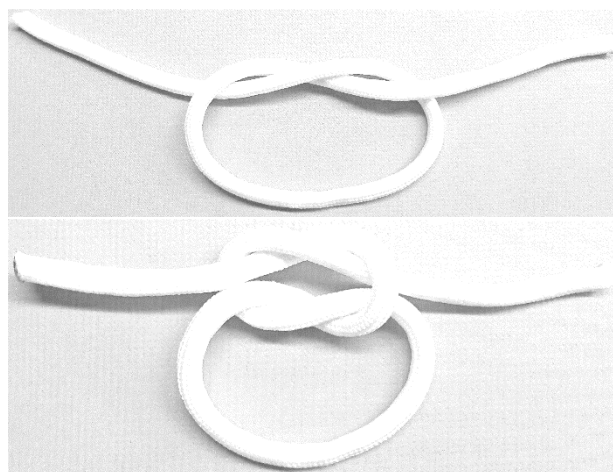
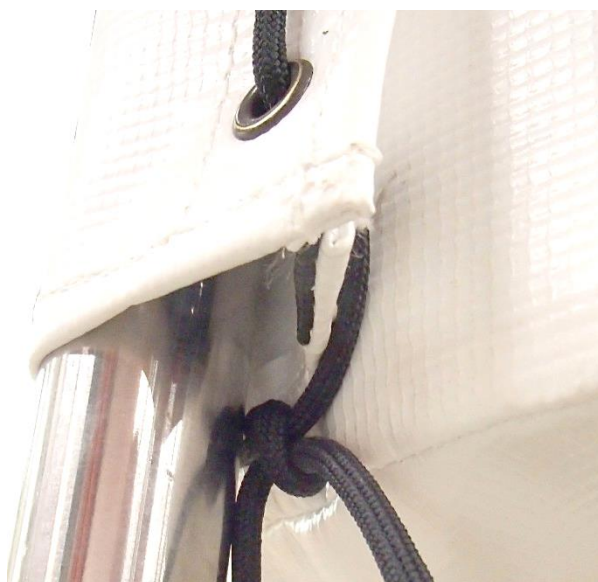


To secure the **CORD** to the rails, fully unlace the lacing flap. Place the flap over the top rail (or lifeline) and lace the flap back up. Note the lacing pattern below.





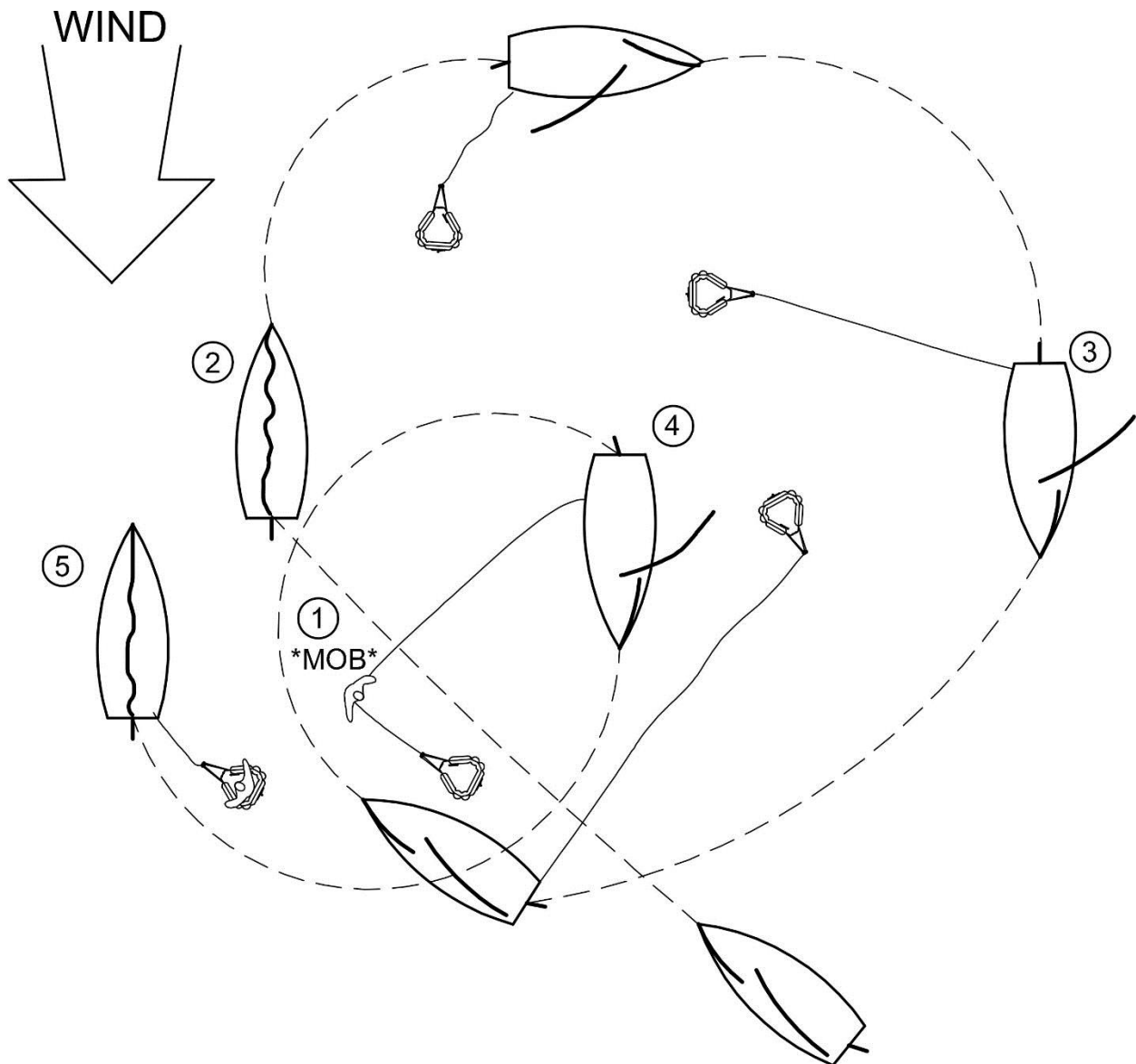
Secure the laces with a square knot.





Operating Instructions

Explain the CORD to everyone who comes aboard. In the event of a man overboard emergency, every member of the crew must be prepared to act immediately. Although the CORD provides the fastest way to get rescue equipment into the water, actual rescue requires additional action by captain and crew. The captain should drill the crew thoroughly and frequently on the procedures to follow in such an emergency.



Refer to previous diagram:

1. **MAN OVERBOARD! Deploy the CORD.** As quickly as possible, deploy the **CORD** by lifting the red flap and pulling the inflation tab straight up with a sharp jerk. The flotation device will inflate, falling from the bag and drop into the water near the victim.



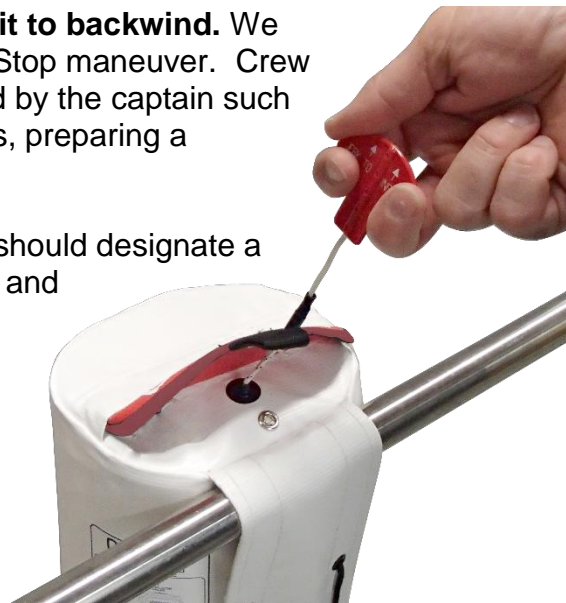
2. **Immediately put the boat about causing it to backwind.** We recommend all helmsmen study the Quick Stop maneuver. Crew members should perform tasks as assigned by the captain such as starting the engine, taking down the sails, preparing a heaving line, etc.

3. **Circle back to the victim.** The helmsman should designate a crewmember to sight the person overboard and maintain a visual as the boat circles back around.

4. **Continue circling until the overboard person can reach the CORD.**

5. **Pull in retrieval line with both hands after victim is secured in Underarm Flotation Device (UFD).** If victim cannot

climb aboard, use the lifting straps to hoist victim. If necessary, a crew member should drop the end of the halyard to the victim and they should secure the end to the two lifting rings at the end of the lifting straps. Then, hoist the victim aboard.





NOTE: Under no circumstances should the victim leave the flotation device before being securely attached to the boat. Never put another crewmember overboard to assist a person in the water unless they are wearing a PFD, harness and are attached by a line to the vessel.

Retrieve and Repack. Bring the **CORD** device aboard. If possible, rinse it with fresh water and allow to air dry. Deflate the underarm flotation device (UFD) by pulling the black, dustcap off the oral inflation tube. Reverse the cap and press it back into the oral inflation tube. Then, roll up the device to squeeze all the CO₂ out. Reverse the dust cap on the oral inflation tube again to prevent air from coming back in. The Switlik Survival Products **CORD** CREW OVERBOARD RESCUE DEVICE can be serviced and repacked by the user.

NOTE: It is recommended that the **CORD** unit be removed from its mount and stored below if the boat will be moored for extended periods.



Care & Servicing Instructions

CLEANING:

The **CORD** valise and flotation device may be cleaned with mild soap and water. Never use harsh chemicals on or around this product. If exposed to harsh chemicals such as hydraulic fluids, oils or solvents, have the unit cleaned and inspected by an authorized service center.

SERVICING:

The Switlik Survival Product's **CORD** Gen II CREW OVERBOARD RESCUE DEVICE can be serviced by the user. However, only authorized parts may be used to service this device. See the parts section of your owner's manual for available parts.

The **CORD should be serviced every year**. It also needs to be serviced after an actual deployment. Refer to the instructions in the "SERVICING – detailed" section of your owner's manual.

NOTE: Except where specifically instructed, complete disassembly is neither required nor desired. Disassemble only to the extent required to clean, inspect, and make necessary repairs or replacement.

WARNING: For servicing or repairs beyond the scope of your owner's manual, or if you're not confident in the self-inspection of your device in accordance with these instructions, return your **CORD** to a factory-authorized service center.

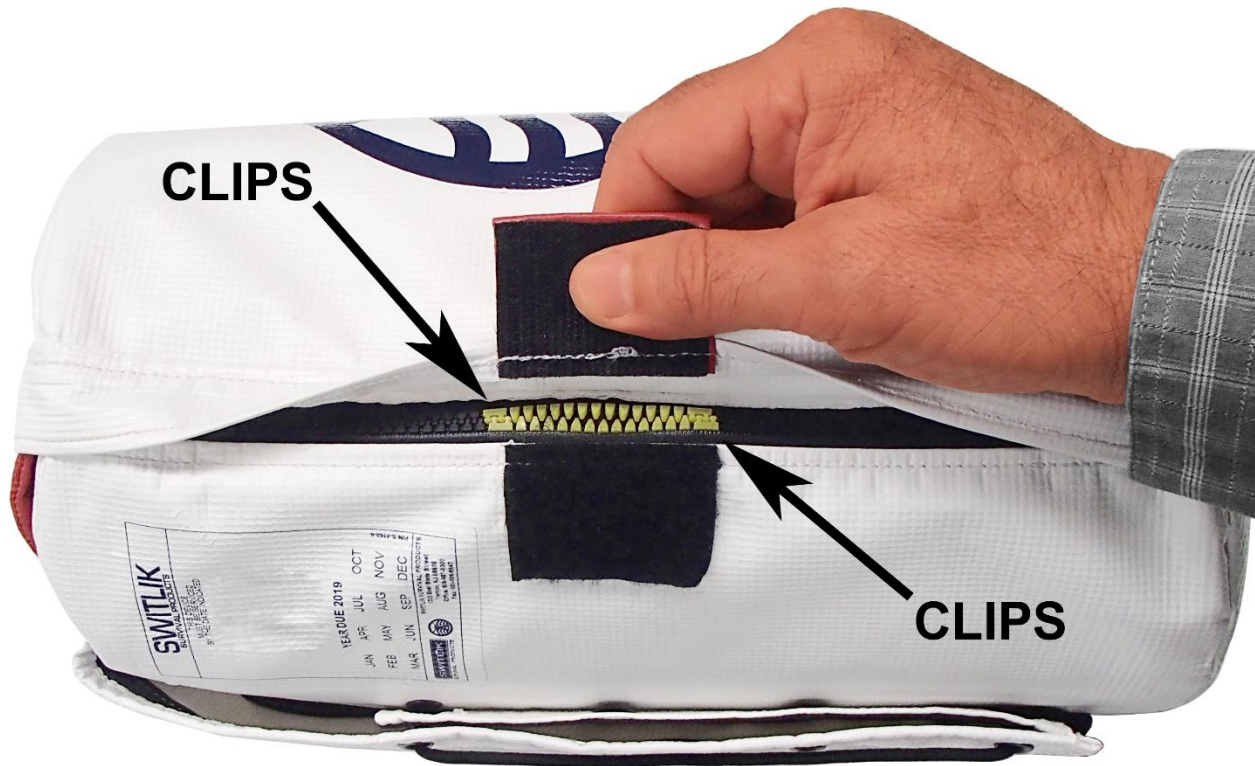
IDENTIFICATION LABEL:

Located inside the end cap on the valise is an identification label. The label contains the part number and serial number of your device.

P/N: S-4161-2
SERIAL NO: CRD-XXXX



Check your CORD device often. Especially before going out on your vessel. Make sure the zipper is not spreading apart by pulling back the Quick-Burst zipper cover. The clips at each end of the Quick-Burst section must be joined together.



If the zipper has separated, pull the zipper slider back down past the Quick-Burst section, then pull it all the way back up. This will join the Quick-Burst clips back together. Close the cover over the Quick-Burst section and snap the top cover flap closed.



Switlik Survival Product's
CORD Gen II Crew Overboard Rescue Device
Quick-Start Guide

Storage

Proper storage of your **CORD** is very important. The better the care it receives, the longer it should last for you. When not in use, we recommend that you store the device in a climate controlled environment and not leave it outside. It should be stored in a clean and dry environment out of direct sunlight. The ideal storage temperature is between 60° F - 70° F with no more than 50% humidity.

Do not stuff it into a tight container or locker when not in use, nor allow other items to be stacked on top of it. Protect it against vermin, acids, gasoline, fuel oil, and other chemicals or their fumes which may contaminate the material. Do not expose to concentrations of ozone (produced by electric motors, generators, or switches). Do not store the unit on the ground. Keep this manual with the **CORD**.



Switlik Parachute Company
1325 E. State Street
Trenton, NJ 08607
(609) 587-3300
(609) 586-6647 FAX
www.switlik.com

P/N S-4241-1 (rev B, 6/19)