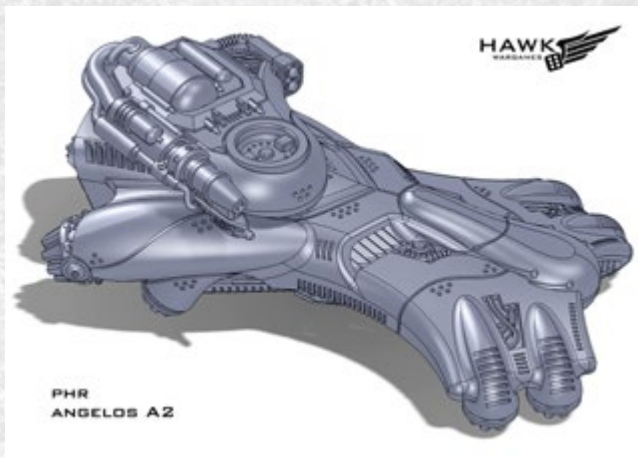


ANGELOS A2 JETSKIMMER - EXPERIMENTAL RULES 1.0



As the PHR become more embroiled in outright conflict on the Cradle Worlds, more intelligence is being gathered about their war engines and constructs. Given their frightening efficiency and hit and run tactics, it has taken this long for UCM intelligence services to start correctly identifying alternative weapons and chassis of vehicle in this secretive race's arsenal.

The Angelos A2 is one such vehicle. Originally it was classified under a standard Angelos build, most often delivering Longreach rifle squads into buildings and lending long range demolitions support to the battlefield. Due to the reports of Commander Wade in one recent action, we now have more intel on this deadly knew close support vehicle.

Spotting a pair of Angelos heading for an entrenched position (in a seemingly futile attack), Wade ordered the retreat of the troops, knowing full well that PHR would have some trick up their sleeves. Sadly the extraction was not as timely as necessary, and when the A2's arrived those infantry still in the position found to their horror that these transport were equipped with high-powered flamethrowers. Two units of Heavy hazard suits and three squads of Legionnaires were lost to the initial onslaught, followed by all remaining men when the Angelos disgorged their cargo of Sirens.

ANGELOS A2	A	MV	CM	DP	PTS	TYPE	CATEGORY	S+C	SPECIAL
	B	6"	A	2	35	VEHICLE	TRANSPORT	T, STANDARD	SKIMMER

WEAPONS	E	SH	AC	R(F)	R(C)	MF	ARC	SPECIAL
RX-666C FLAMETHROWER	4	6	3+	6"	6"	6"	F/S/R	FLAME

Transport: 1x Neptune Medium Dropship (2 units)

* **Special rule - Assault Transport:** An Angelos A2 may be chosen as a Transport option for the following Squads: Immortals, Sirens, Immortal Longreach Team, and any other Infantry that states it as a transport option (1 unit each).