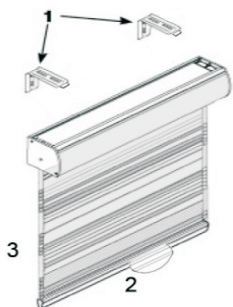


CORDLESS ZEBRA SHEER SHADE INSTALLATION INSTRUCTIONS

1. PACKAGE CONTENTS

Before installing your shade, make sure all parts listed below are present. If any of the parts are missing or damaged please contact customer service to receive a replacement.



1. Brackets (QTY:2) and screws (QTY:4)
2. Handle (QTY:1)
3. Shade

2. TOOLS YOU MAY NEED

Screwdriver
Pencil

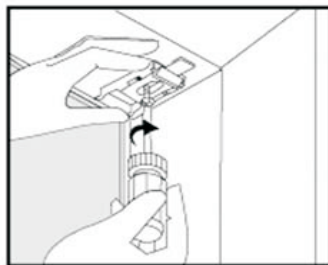
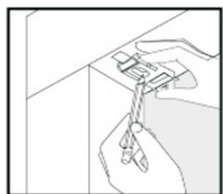
Measuring Tape
Drill/Drill Bits(Optional)

3. DETERMINE INSIDE/CEILING, FLUSH, WALL OR OUTSIDE MOUNT

a. Inside/Ceiling or Flush Mount

(A minimum 3/4-inch depth is required or 3-inch depth for flush mounts.)

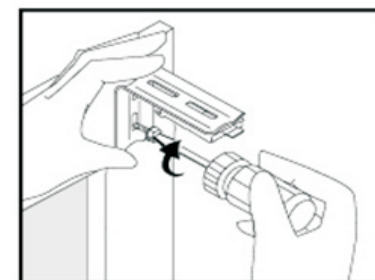
1. Test the end bracket location 1-to-2-inches from the end of each headrail-side.
2. Mark the bracket locations upward through the holes with a pencil.
3. Use the screws in the top bracket holes to attach your brackets. Use drywall anchors if applicable.



b. Wall or Outside Mount

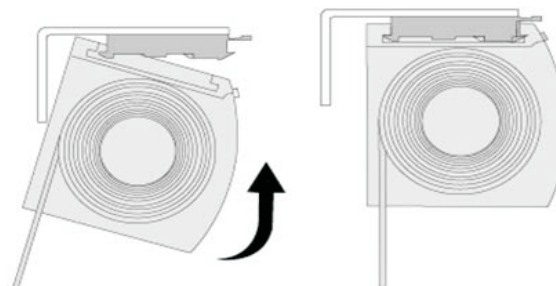
(A minimum 7/8-inch flat wall space is necessary.)

1. Test the end bracket location 1-to-2-inches from the end of each headrail-side.
2. Mark the bracket locations toward the back through the rear holes with pencil.
3. Use the screws in the rear bracket holes to attach your brackets. Use drywall anchors if applicable.



4. INSERTING THE HEADRAIL

- a. Lift the headrail into position such that the back edge of the headrail is under the inner back edge of the bracket.
- b. Rotate the headrail upward until the release tab at the front of each bracket snaps onto the front of the headrail until a snapping sound is heard. This will let you know that the shade is engaged into the bracket.
- c. Check carefully to assure that each bracket is properly secured.



5. ATTACH THE HANDLE / HOW TO OPERATE

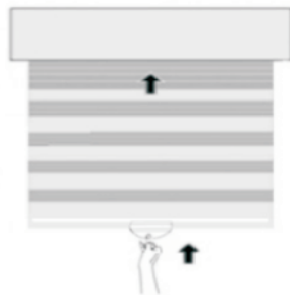
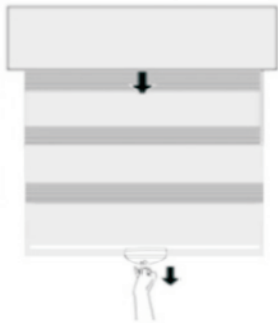
Clip the handle to the center of the bottom rail.

To lower the shade: grip the handle and slowly pull straight down.

To raise the shade: put one hand under the handle and slowly lift until the desired height is reached.

Important Note:

Always push and pull at the center of the shade to assure that the bottom of the shade remains even (i.e. parallel to the top of the shade). If the shade becomes uneven, slowly pull it all the way down, and then lift to the desired position.



6. REMOVE THE HEADRAIL

Push the release tab at the front of each bracket. Rotate the headrail downward to remove the shade.



7. CLEANING & CARE

To clean the shade, use a feather duster or vacuum lightly using the soft brush attachment.

