

ModMic USB Installation




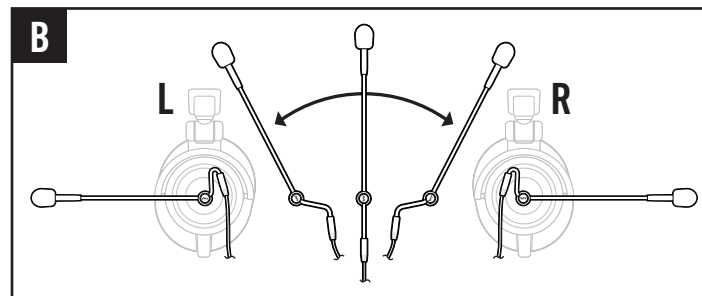
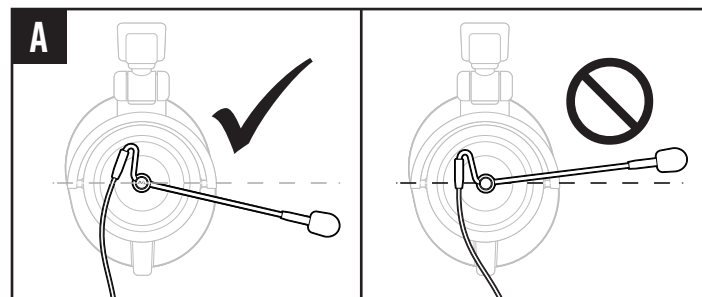
Surface Selection

Find a flat spot on the headphones for the 0.5 inch / 12.7mm circle of adhesive. The adhesive will stick to smooth and mesh surfaces but does not stick well to porous, lacquered, or rubberized surfaces.

1. Put the headphones on to ensure the ModMic will reach the corner of your mouth from the desired mounting point.
2. Thoroughly clean and dry the surface with the included alcohol pad.

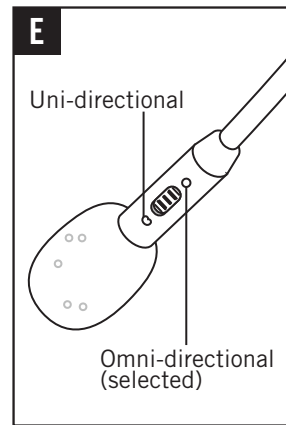
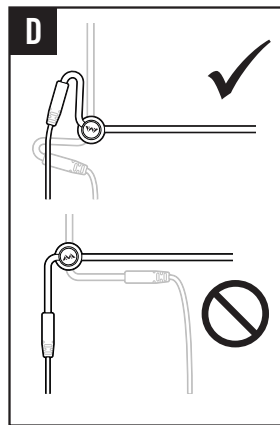
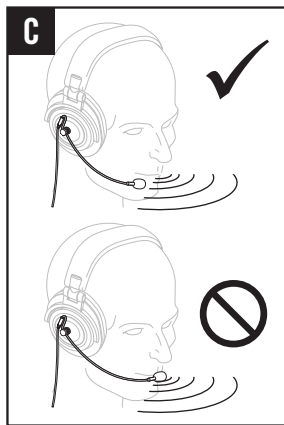
Attaching & Orientation

1. Attach a  to the top clasp that holds the ModMic's boom.
2. Remove the protective backing from the adhesive.
3. While holding the top clasp, orient the mic boom angle down so it points towards where your mouth will be when using your headphones. (This will reduce the need for additional bends in the boom after installation—see *Figure A*).
4. Press the whole mic/clasp down onto the cleaned spot and hold firmly for 60 seconds. Allow the adhesive to cure for 1 hour.
5. To reverse the orientation of the boom from the left earcup to the right, do not remove the boom's screw-on clasp. Simply re-bend the cable end of the boom downward in the opposite shape (see *Figure B*). Always ensure the cable is pointing downward to prevent cable breaks.



Getting the most from your ModMic USB

1. The mic is sensitive to plosive blast/wind from your mouth, especially “P” sounds (see *Figure C*).
2. To lessen unwanted cable torque on the clasp, fold the cable end of the boom so that it is close to the clasp (see *Figure D*).
3. Ensure the selector switch on the boom is pointed towards your mouth (see *Figure E*).

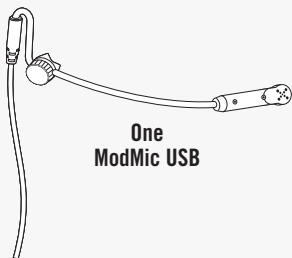


Do you need a little more help?

Here are some common troubleshooting steps that may help you out.

1. Ensure the mute switch is unmuted. A red light means the mic is muted. Press the button one time to mute/unmute.
2. Make sure you have the ModMic selected as your default listening device in your recording devices options.
3. Try multiple ports on your computer/device if you're having audio quality issues.
4. Test both uni-directional (switch towards the mic tip) and omni-directional modes (see *Fig E*).
5. If you need additional help contact us at CustomerService@AntlionAudio.com for service.
6. Some wireless routers may cause interference if close to the mic/cable.

Parts List



One
ModMic USB



In-line
mute switch



Carrying case &
instruction manual



Two base clasps, one
top clasp with cap
& extra 3M adhesives



One alcohol
wipe



One foam
pop filter



10x
cable clips

ModMic USB Warranty

FROM DATE OF PURCHASE, OUR ONE (1) YEAR LIMITED WARRANTY COVERS MANUFACTURING DEFECTS OF THE MODMIC AND/OR ITS ACCESSORIES.

If you experience a product defect and are within the return period of the reseller from which you purchased, please return the item to the retailer.

If you are outside their return window but within our warranty window of 1 year (or the minimum warranty required by your country from date of purchase), we will repair or replace your ModMic for any manufacturing defects in the ModMic and/or its accessories at our discretion.

Our Warranty does not cover/is voided by the following:

1. Damage caused by accident, abuse, neglect, or misuse.
2. If you cannot supply a valid dated proof of purchase.
3. If the ModMic has been disassembled.

Before returning your ModMic for repair or replacement please contact us first at CustomerService@AntlionAudio.com for further assistance!

After Warranty repair or replacement, your Warranty will remain in effect until either one (1) year after your original purchase date, or ninety (90) days after repair or replacement, whichever is longer.



www.AntlionAudio.com Facebook: AntlionAudio Twitter: @AntlionAudio

For more information/extra clasps/questions/feedback visit www.AntlionAudio.com. Designed in Portland, Oregon.
Manufactured in China. ModMic and Antlion logo are registered trademarks of GTDevice LLC. U.S. and International patents.