

ModMic USB Installation




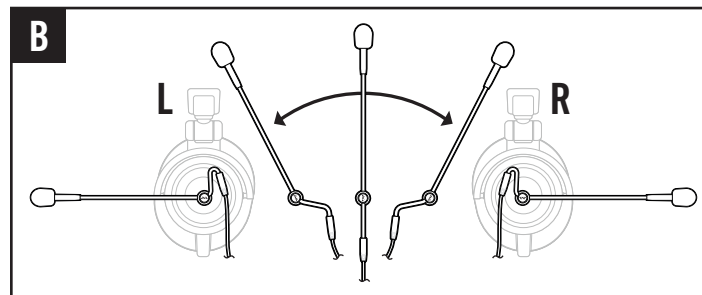
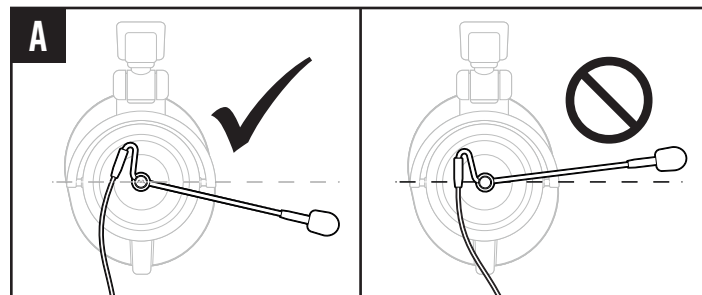
Surface Selection

Find a flat spot on the headphones for the 0.5" circle of adhesive. The adhesive will stick to smooth and mesh surfaces but does not stick well to rubberized surfaces.

1. Put the headphones on to ensure the ModMic will reach the corner of your mouth from the desired mounting point.
2. Thoroughly clean and dry the surface with the included alcohol pad.

Attaching & Orientation

1. Attach a base clasp to the top clasp that holds the ModMic's boom.
2. Remove the protective backing from the adhesive.
3. While holding the top clasp, orient the mic boom angle down so it points towards where your mouth will be when using your headphones. (This will reduce the need for additional bends in the boom after installation (see *Figure A*).
4. Press the whole mic/clasp down onto the cleaned spot and hold firmly for 60 seconds. Allow the adhesive to cure for 1 hour.
5. To reverse the orientation of the boom from left earcup to right, do not remove the boom from the clasp but simply re-bend the cable end of the boom downward in the opposite shape (see *Figure B*). Always ensure the cable is pointing down to prevent cable breaks.



www.AntlionAudio.com

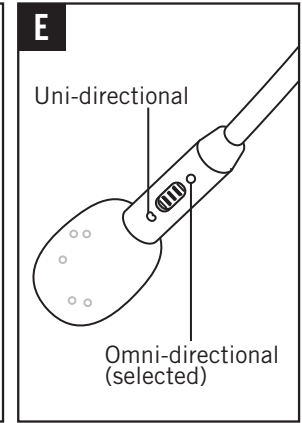
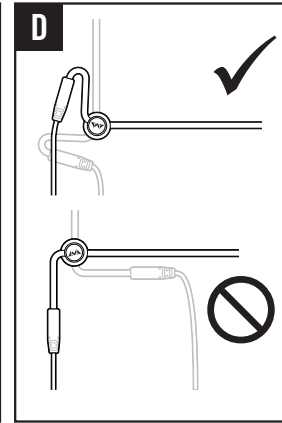
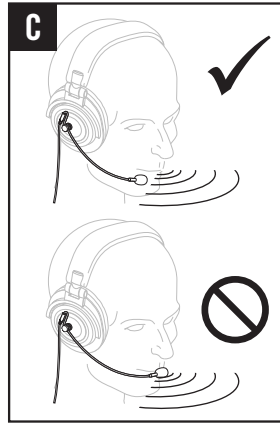
Facebook: [AntlionAudio](https://www.facebook.com/AntlionAudio)

Twitter: [@AntlionAudio](https://twitter.com/AntlionAudio)

For more information/extra clasps/questions/feedback visit www.AntlionAudio.com. Designed in Portland, Oregon.
Manufactured in China. ModMic and Antlion logo are registered trademarks of GTDevice LLC. U.S. and International patents.

Getting the most from your ModMic USB

1. The mic is sensitive to plosive blast/wind from your mouth, especially P's (see Figure C).
2. To lessen unwanted cable torque on the clasp, fold the cable end of the boom so that it is close to the clasp (see Figure D).
3. Ensure the mic symbol on the boom is pointed towards your mouth (see Figure E for detail).



Do you need a little more help?

Here are some common troubleshooting steps that may help you out.

1. Ensure the mute switch is unmuted. A red light means the mic is muted. Press the button one time to mute/unmute.
2. Make sure you have the ModMic selected as your default listening device in your recording devices options.
3. Try multiple ports on your computer/device if you're having audio quality issues.
4. Test both uni-directional (switch towards the mic tip) and omni-directional modes (see Fig E).
5. If you need additional help contact us at customerservice@antlionaudio.com
6. Some wireless routers may cause interference if close to the mic/cable.

Parts List

