

MINGDA Magician Pro

Fear of Leveling Choose Magician

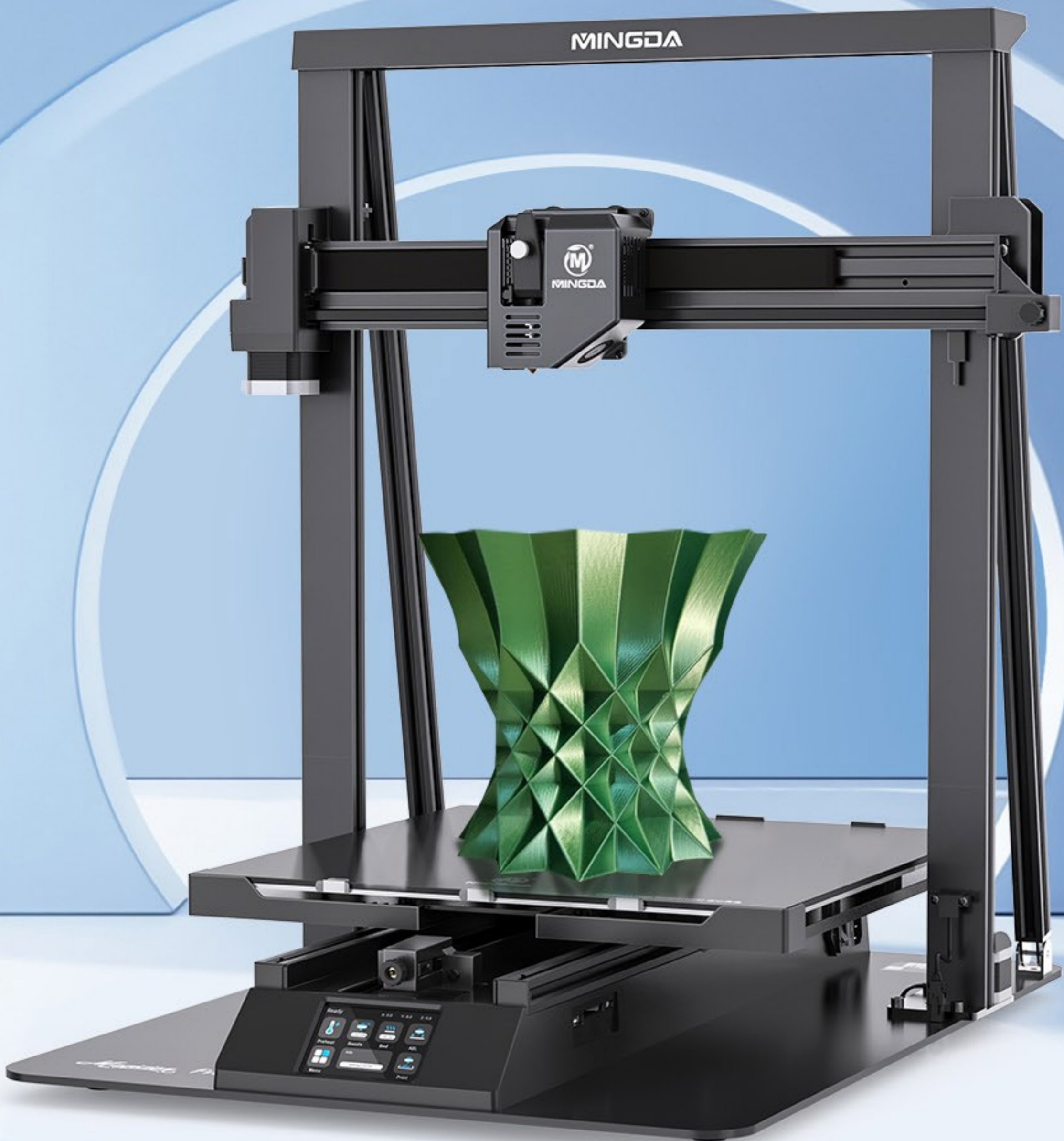
Large

|

Smart

|

Professional





Free
Leveling



Double-Gears
Direct Extruder



One Step
Assembled



Ultra-Silent
Printing



Belt
Tensioner



3.5" Colorful
Touch Screen



High accuracy
BabyStep



Glass
Platform



Large
Print Size



All-In-One
Design

Ultimate Convenient Automatic Leveling and Calibration

One click Leveling by 36points



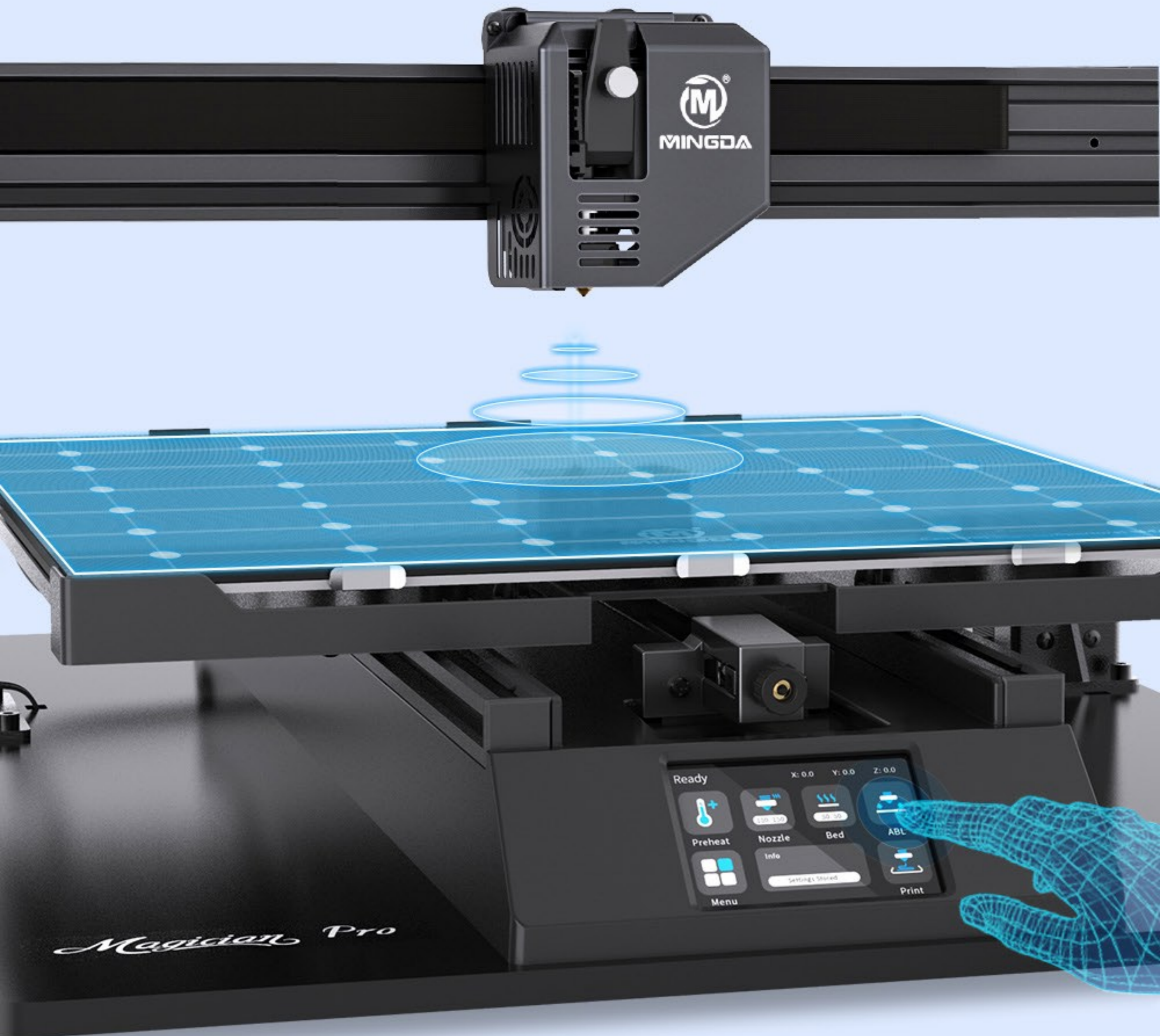
Manual Leveling
by Screws



More Intelligent
& Convenient



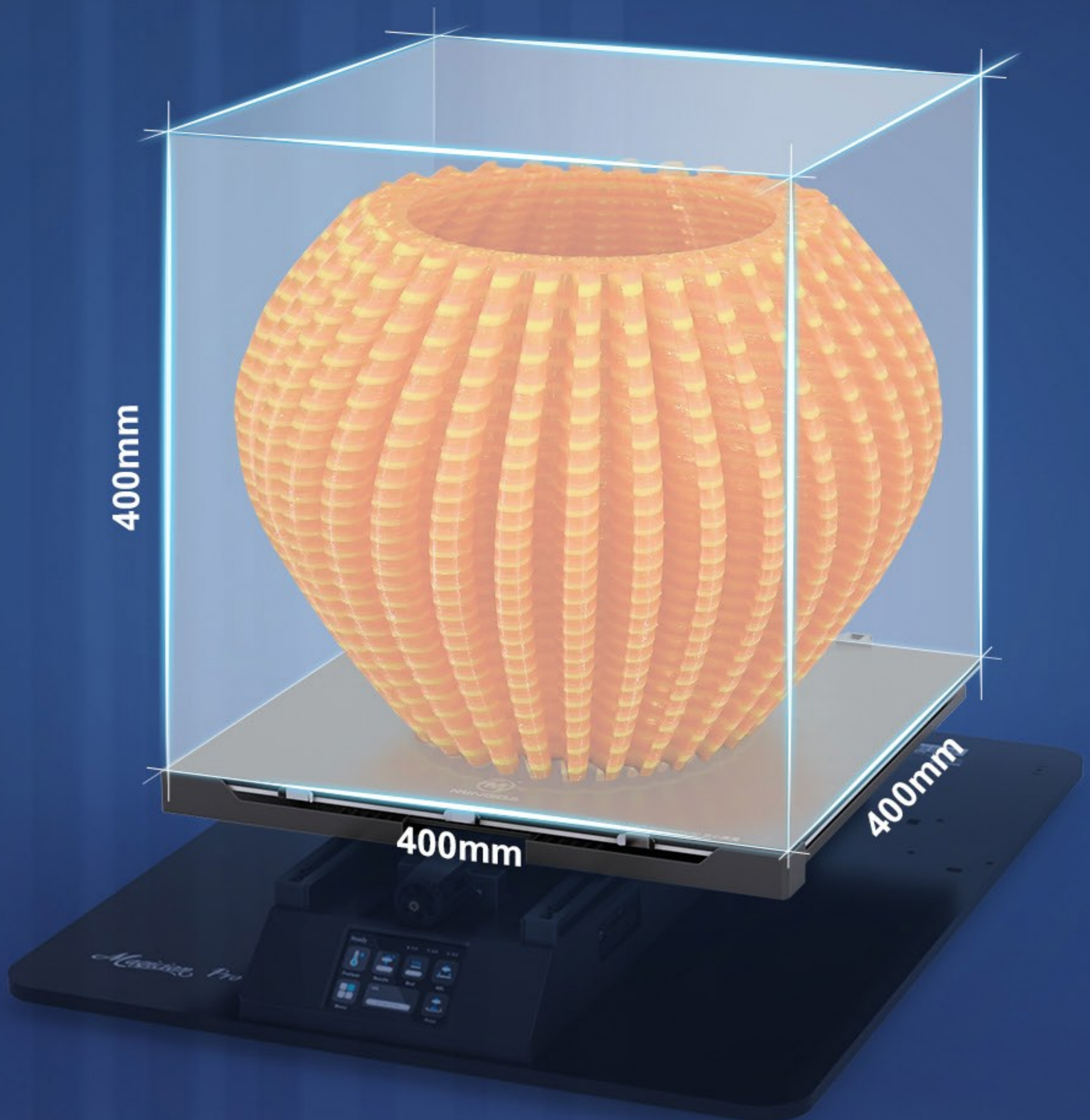
Traditional
BL/3D Touch



Large Printing Size

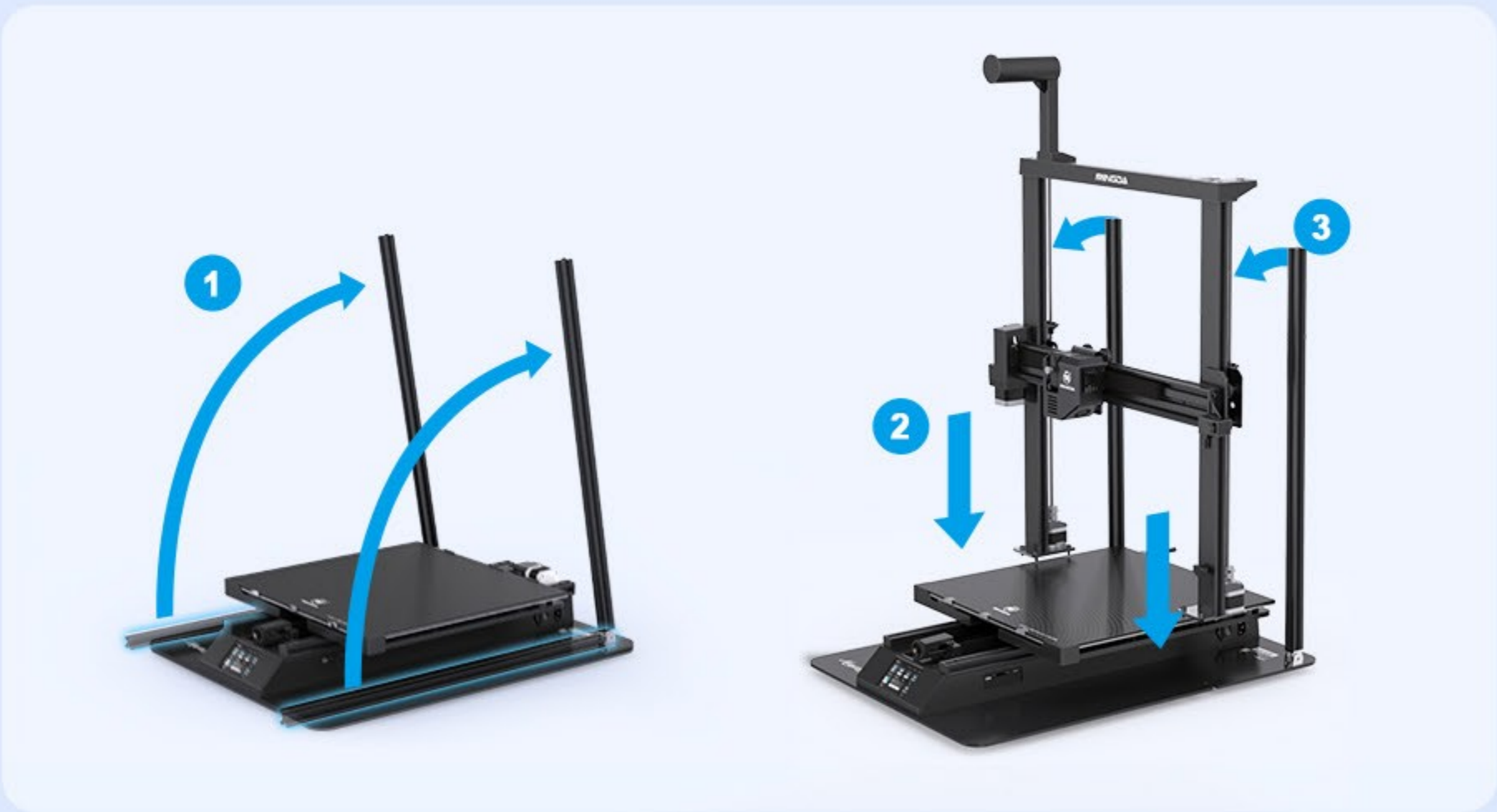
400*400*400mm

Creates more possibilities



Integrated Structure Design

Integrated design, easy to assemble

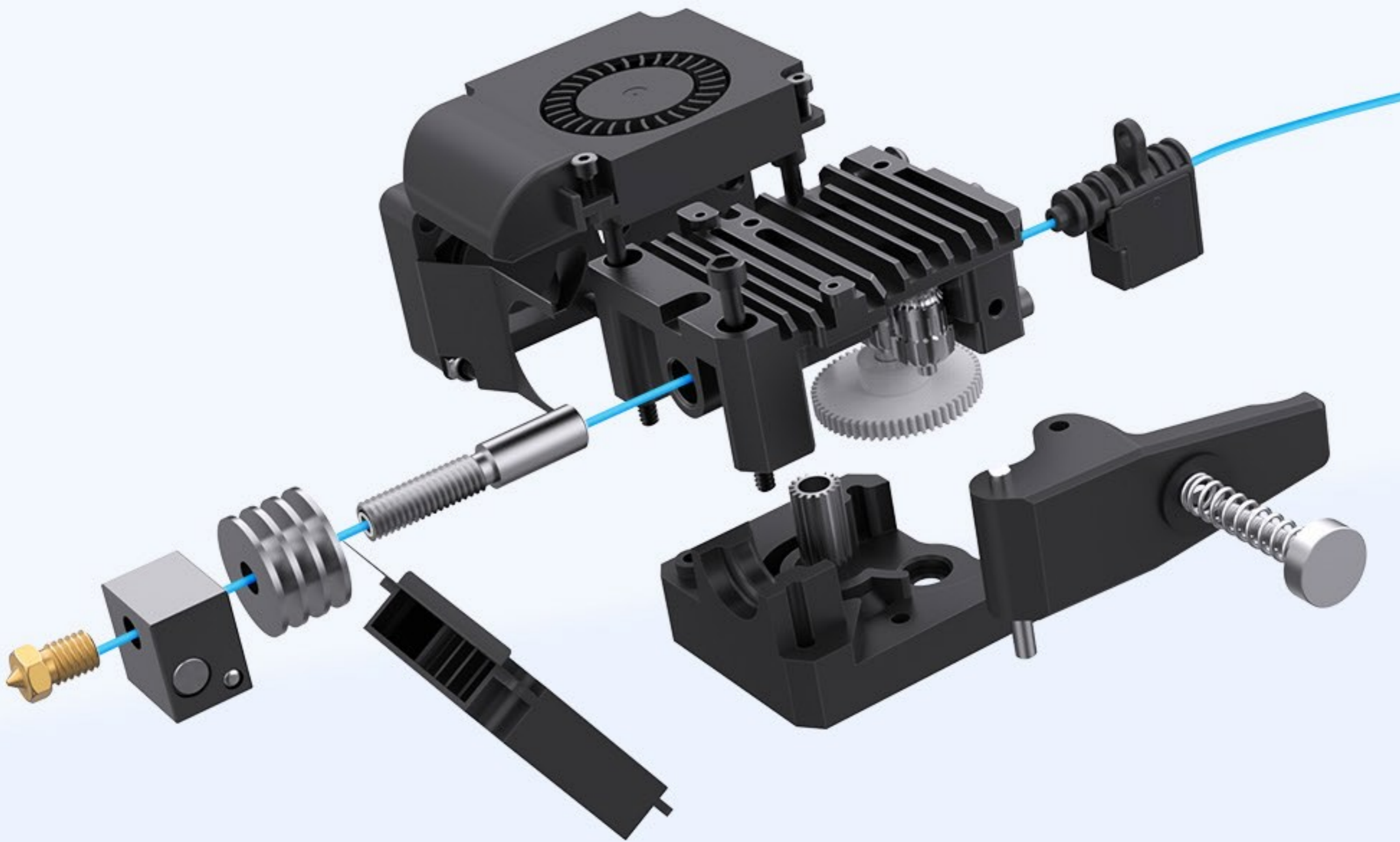


Foldable triangular structure, more professional and stable



Dual-Gears Direct Extruder

Brand new extrusion system,
high quality hot end,
Smoother extrusion without blocking



Double Gear
Extrusion Mechanism



Direct Drive



Modular Parts

Brand New Heating Platform

380W hotbed + 4th-generation carborundum glass platform



Rapid Heating



No Warping

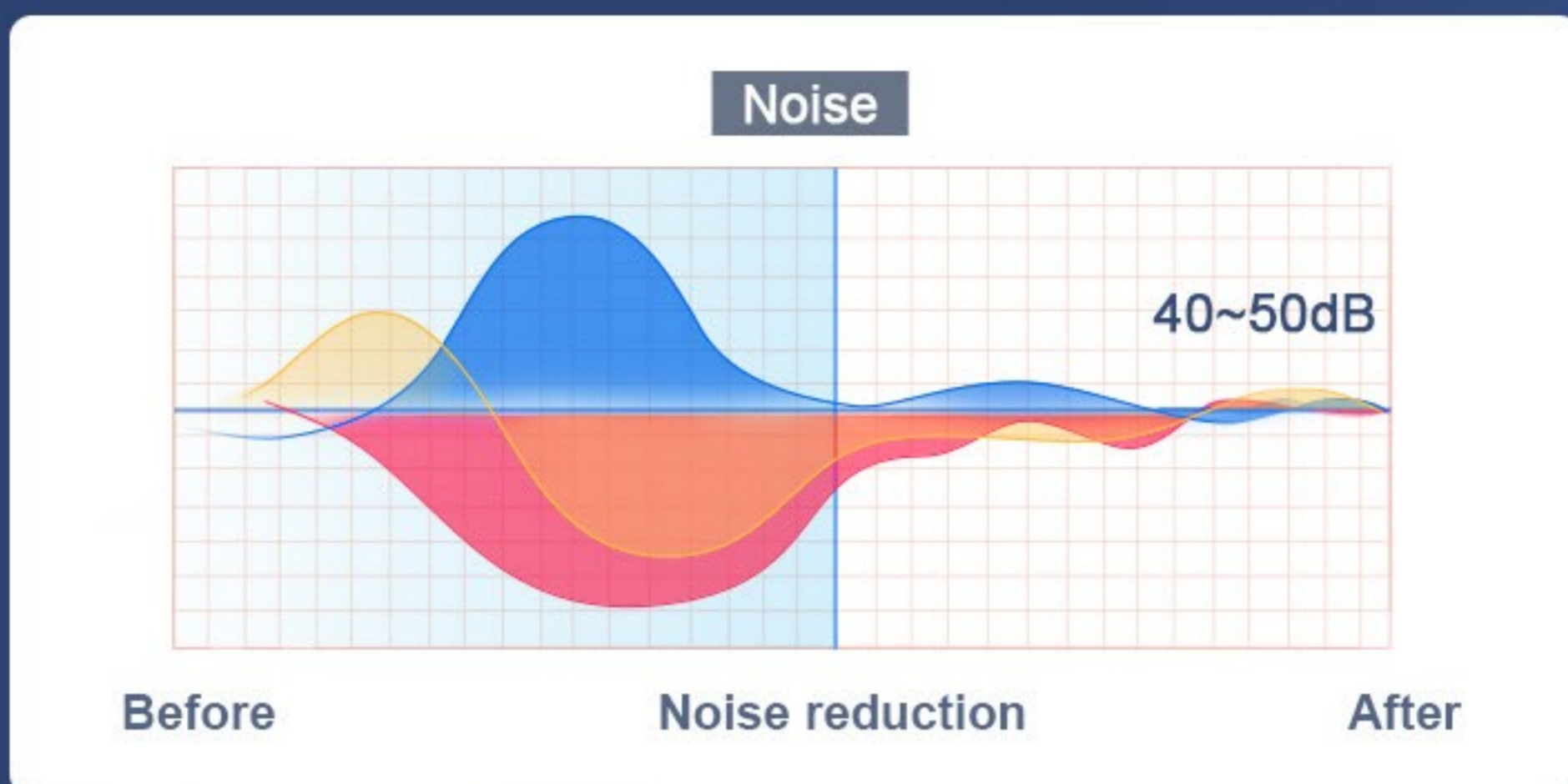


Strong Adhesion

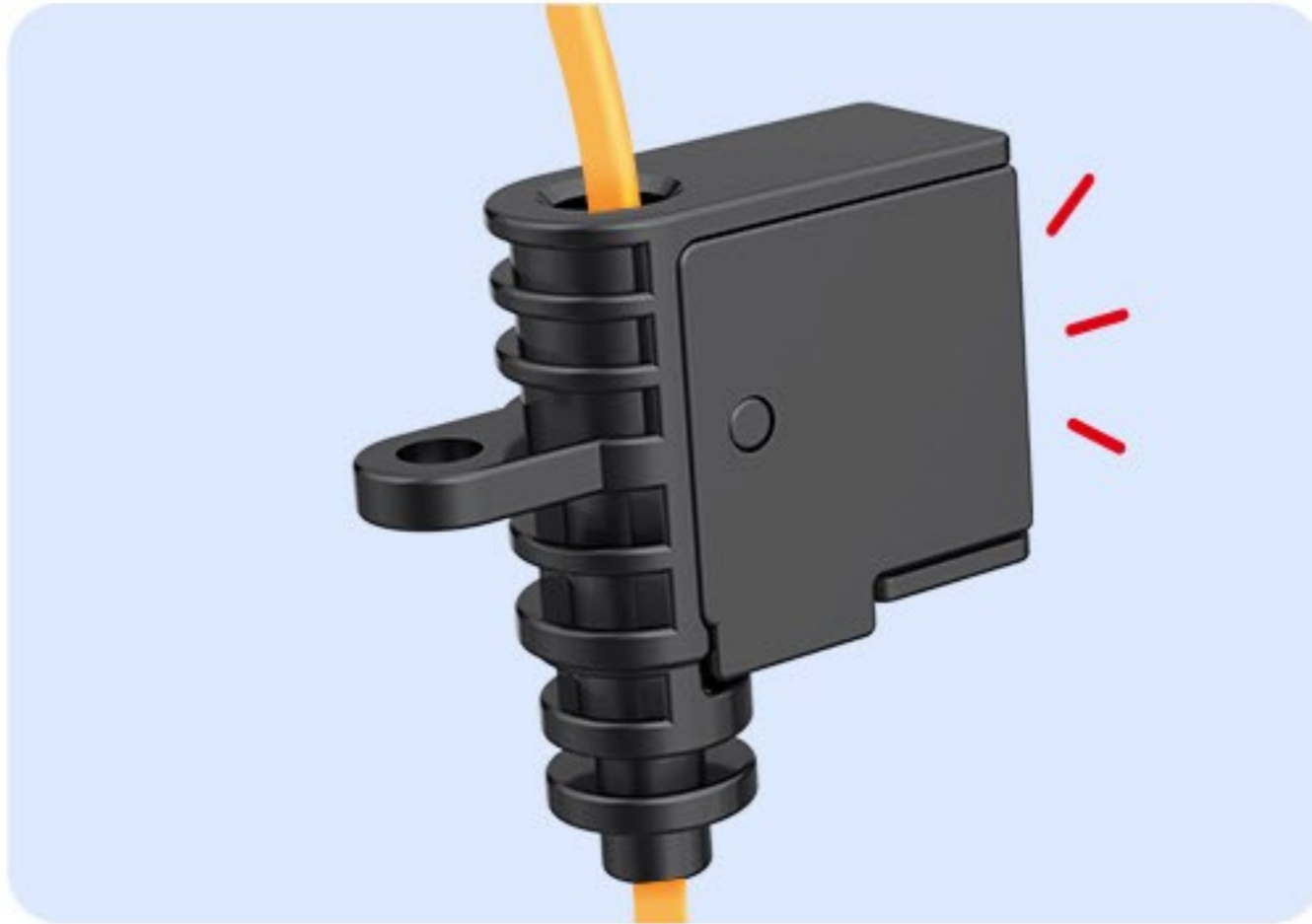


Easy to Remove

Ultra-Silent Printing



More Features

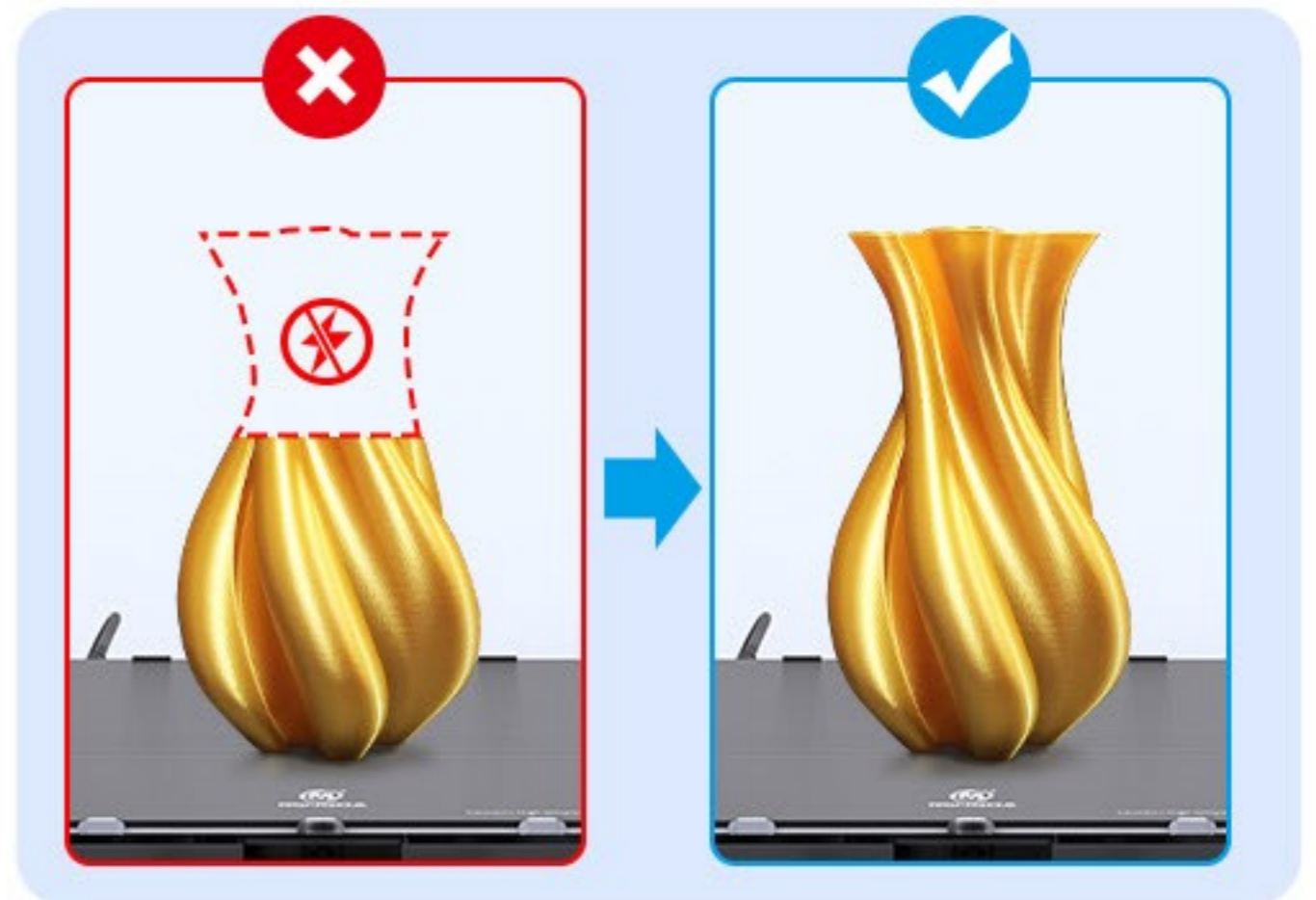


Inside filament run out detector

Turn complex into simple, integrated design.

Resume printing function

No need to worry about sudden power failure.

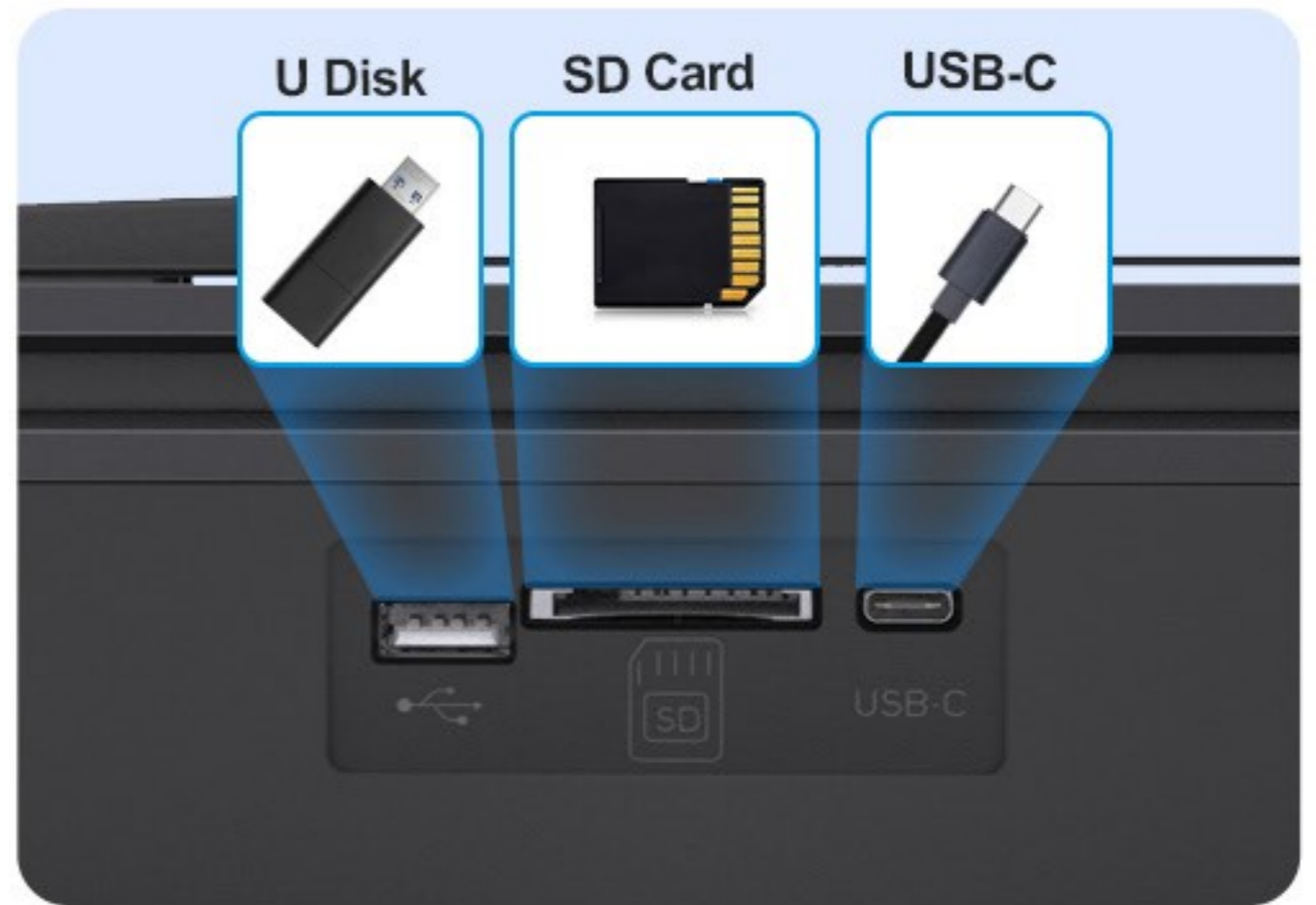


3.5 "color touch screen

Easy to operate, forget the knob control

Multi connection

Support SD card, USB and USB-C, supports online printing



Z axis Dual Screws

Good Synchronization Stable Operation , Ensuring Accuracy Printing

Belt Tensioner on X/Y Axis

Adjust the belt tightness to avoid long-term use of the printer, the belt is loose.



Print parameters

Print parameters:

FDM (Fused Deposition Modeling)

Build Volume:

400(L)*400(W)*400(H)mm

Print Resolution:

± 0.1mm

Positioning Accuracy:

X/Y 0.0125mm, Z 0.002mm

Extruder Number:

Single

Nozzle Diameter:

0.4mm

Print Speed:

<200mm/s (recommended 60~80mm/s)

Support Filaments:

PLA, ABS, TPU

Temperature parameters

Ambient operating Temperature:

5°C - 40°C

Operational Nozzle Temperature:

max ≤260°C

Operational Hot Bed Temperature:

max ≤110°C

Physical parameters

Machine Size:

650mm*586mm*675mm

Machine Weight:

14.5kg

Package size:

766mm*630mm*260mm

Noise during printing:

40dB~50dB

Input voltage:

100/240 V AC, 50/60Hz

Output voltage:

24V (500W)

Software parameters

Software parameters:

Cura, Reptier-Host, Simplify3D

Input Formats:

.STL, .OBJ

Output Formats:

GCODE

Connection Mode:

SD Card, U Disk, USB-C