

Mars 3 Pro



Formidable performance · Faster print speed · Simple operation

4K MASR 3 PRO

6.6 inch monochrome LCD 3D printer

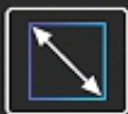




6.6 " monochrome
Exposure time 1.5-3s



4K LCD Screen
4098*2560px



Build Volume
143*89.6*175mm



Upgraded UV LED
lighting unit
36 LED lights

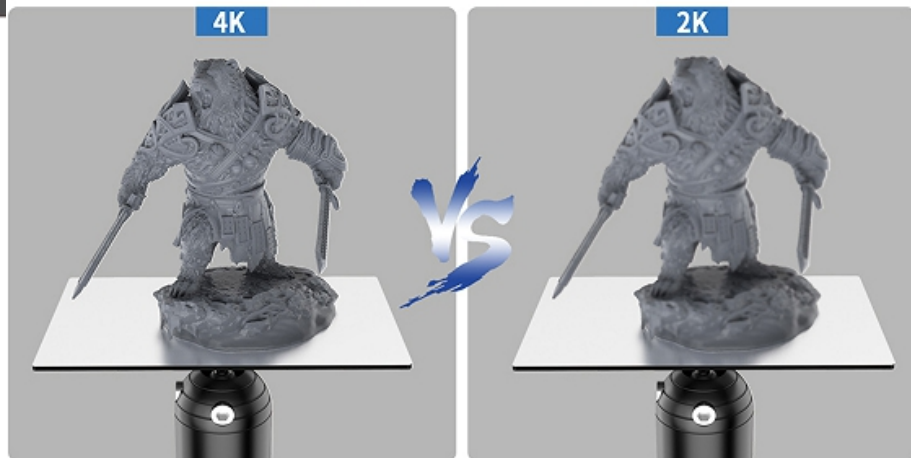
4K HD MONOCHROME LCD

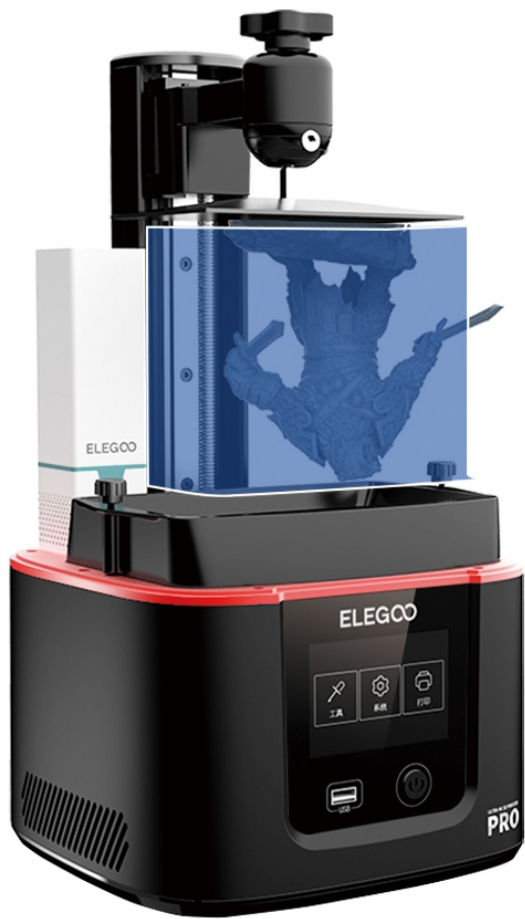
4098*2560px high resolution brings vivid details to printed models



Excellent Printing Accuracy

30% improvement compared to the 2K screen





Large Printing Size

143mm(L)*89.6mm(W)*175mm(H)

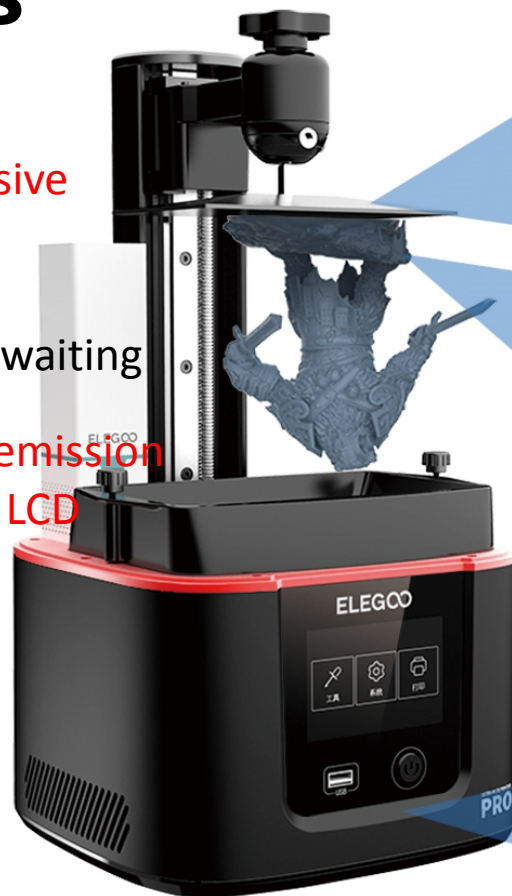
To meet different printing size requirements of users

New upgrades

Mars 3 Pro comes with an impressive print speed and higher stability

Fast printing saves time wasted on waiting

Low energy consumption and heat emission extends the lifespan of the mono LCD



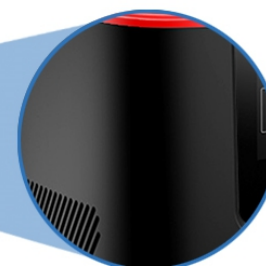
Non-slip heagon socket screw makes levelling easily



Sandblasting process makes the printed model better adhering to the build board

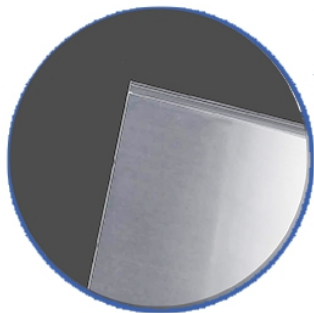


UV Effect Spray makes surface cleaning easier while improving corrosion resistance



FEP Film 2.0

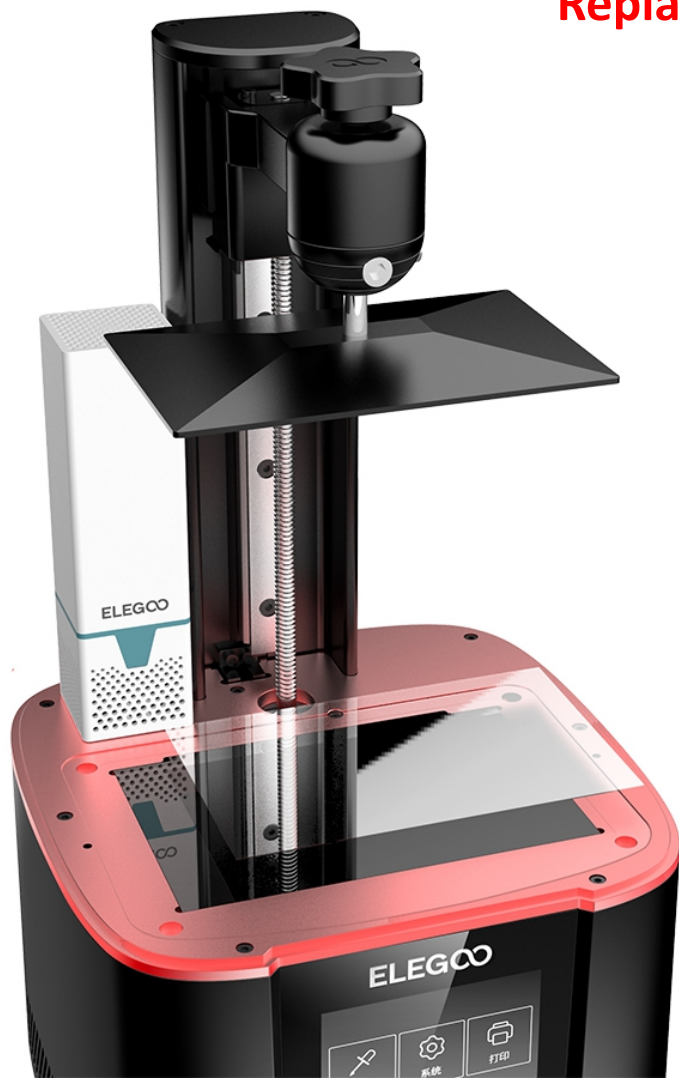
With 2pcs for free



Demoulding is **easier and quieter**

Printed model will be more accurate and smoother owing to higher UV light transmittance

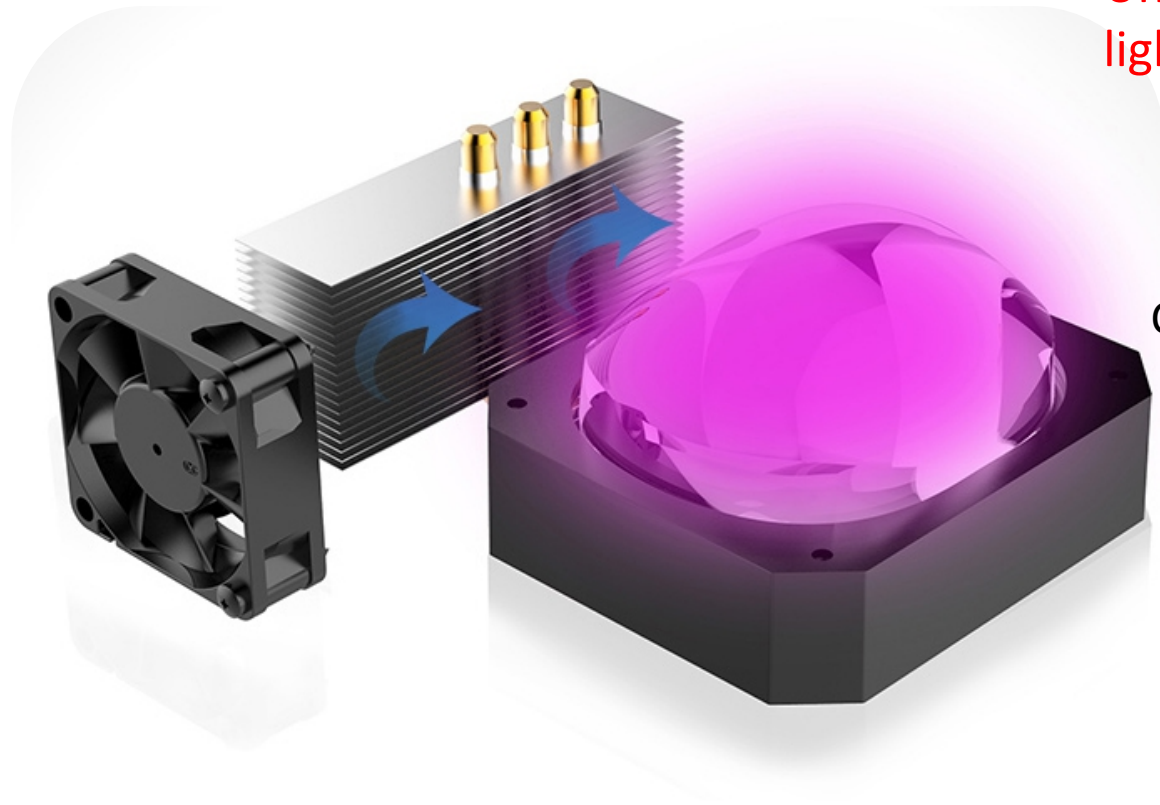




Equipped with
Replaceable 9H hardness tempered glass protector
to protect the Monochrome screen

Features of the tempered glass protector:

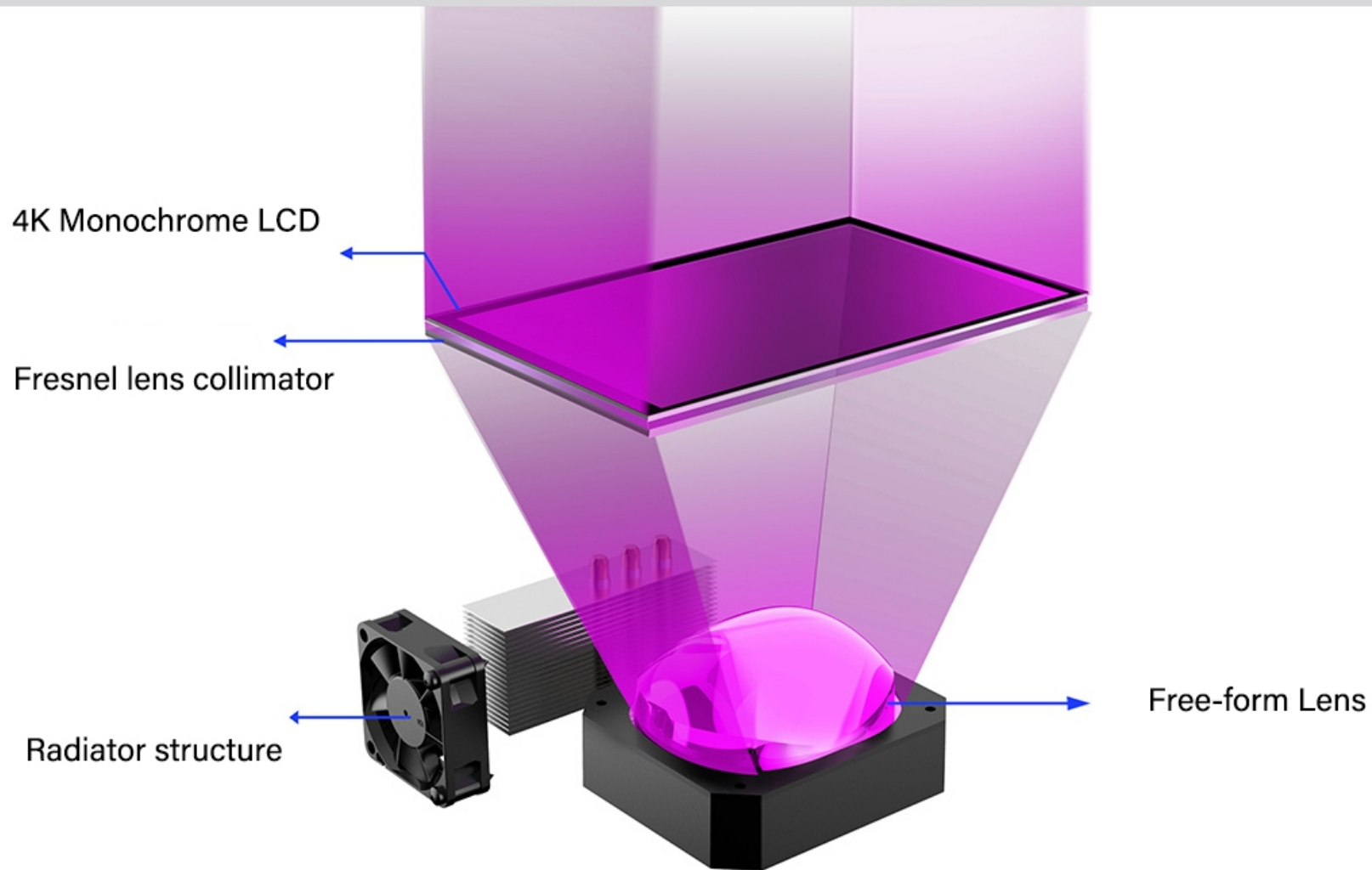
Seamless Joint
Explosion-proof&Wear-resistant
Breakage-proof&Scratch-resistant
Ultra high resolution

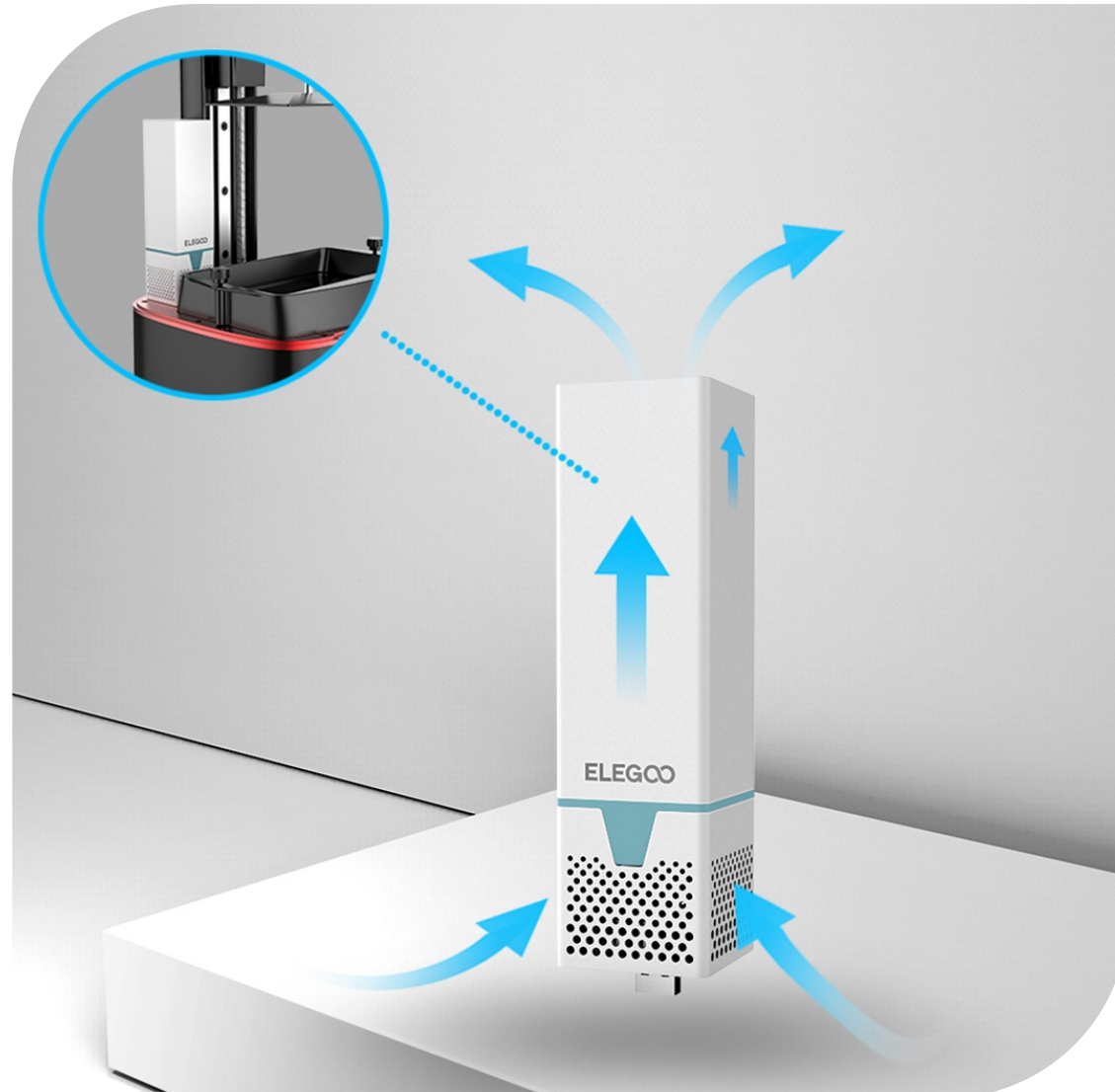


Unique heat dissipation performance and light source guarantees high speed cooling

Copper heat transferring system dissipates more effectively than other metals

The Fresnel lens collimator enables the light angle to reach within 5° and the uniformity to reach more than 92% and provides printed models with extremely sharp and clear edges and corners.





Mini Air Purifier

Activated carbon has special properties that is to remove volatile organic compounds and chemical odors of resins which will bring better user experience.



Parameters

Molding technology:

MSLA 3D Stereo lithography

Build Volume:

143mm(L)*89.6mm(W)*175mm(H)

XY Resolution:

0.035mm(4098*2560)

Printer Dimensions:

22.7cm (L)*22.7cm (W)*43.85cm (H)

LCD contrast ratio:

380:1

Layer Thickness:

0.01-0.2mm

Connectivity

USB

Operation:

3.5 Inch Touch Screen

Slicer Software:

CHITUBOX

Weight:

5.5kg

ELEGOO



ELEGOO



ELEGO





ELEGOO

THANKS

www.elegoo.com