

CLEANING MACHINES FOR UNCLASSIFIED (GENERAL PURPOSE) AREAS
CLASS 16 1101 - 16 1181
All the electrical components are Recognized or Certified UL or CSA,
and qualify for all Applicable Requirements CAN/CSA-C 22.2 No.243 and UL STD No.1017



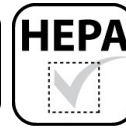
Continuous Duty



Dry Recovery



Detachable Tank



HEPA Filter Available
HEPA - Optional



SS 304

Characteristics



- Industrial vacuum cleaner for continuous duty
- Very powerful machine capable of working with large diameter suction hoses up to 70mm. Perfect for food industry, machine shops, plastics industry, ceramics industry, printing, textiles, heavy clean-up, etc.
- Regenerative blower with TEFC induction motor rated for continuous duty
- Includes a Star Shaped Main Filter.
- Manual Filter Shaker (MFS) system.
- Upstream filter cartridge for fine dust.
- Optional HEPA Filter with minimum efficiency of 99.97% on 0.3 micron (installed in the place of the upstream filter cartridge).
- Detachable Recovery Tank (DT) for easy disposal of recovered materials
- Filter chamber and recovery tank made of stainless steel Type 304.
- Sight glass installed on recovery tank.
- Exhaust silencer for quiet operation

Specifications

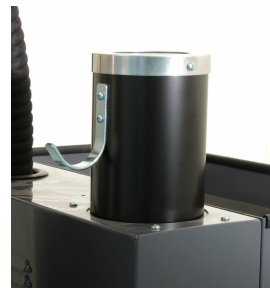
PLANET 740S	111218A1	111218A2	111218A5
Model Name	PLANET 740S	PLANET 740S	PLANET 740S
Type (Powerhead)	Electric	Electric	Electric
TEFC Motor	Yes	Yes	Yes
Voltage	460 V	208/230 V	575 V
Hertz	60 Hz	60 Hz	60 Hz
Phase	Three	Three	Three
Wattage	4600 W	4600 W	4600 W
Power	6 HP	6 HP	6 HP
Amperage	amps.	amps.	7.6 amps.
Air Flow	294 CFM	294 CFM	294 CFM
Vacuum Pressure	155 " H ₂ O	155 " H ₂ O	155 " H ₂ O
VRV Setting	110 " H ₂ O	110 " H ₂ O	110 " H ₂ O
Sound Level	74 dB(A)	74 dB(A)	74 dB(A)
Plug Type	Not Included	Not Included	Not Included
Suction Inlet	70 mm	70 mm	70 mm
Cart Type	Detachable Tank (DT)	Detachable Tank (DT)	Detachable Tank (DT)
Filter Cleaning	Manual Filter Shaker (MFS)	Manual Filter Shaker (MFS)	Manual Filter Shaker (MFS)
Filter Type	Star Shaped + Cartridge	Star Shaped + Cartridge	Star Shaped + Cartridge
Filter Surface Area	21 ft ² + 10.8 ft ²	21 ft ² + 10.8 ft ²	21 ft ² + 10.8 ft ²
Dry Recovery - Tank	26 Gal	26 Gal	26 Gal
Length	43 "	43 "	43 "
Width	24.5 "	24.5 "	24.5 "
Weight (Vacuum Only)	305 lbs.	305 lbs.	305 lbs.
Height	58 "	58 "	58 "
Cord Length	30 ft.	30 ft.	30 ft.

Please note that specifications are subject to change without notice

Use only recommended tools & accessories



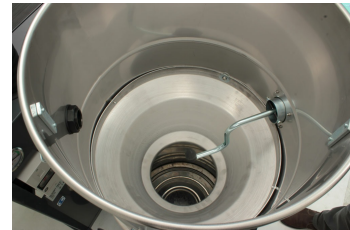
Planet Filter Blockage Indicator Gage. Manual Starter with Overload Protection



Planet Integrated Silencer



Planet Side Mounted Manual Filter Shaker



Planet Side Mounted Manual Filter Shaker (Internal View)



Planet Sight Glass on Recovery Tank



PLANET 740S & 740S MB Polyester Filter Cartridge - Included



Planet Star Shaped Polyester Main Filter



Planet Tangential Suction Inlet, 70mm, Aluminum



Planet Vacuum Relief Valve (VRV)



Planet 740S with Recovery Tank removed