

HARVESTER SERIES DUST COLLECTOR

SPECIFICATIONS AND TECHNICAL DATA

STANDARD FEATURES:

- REVOLUTIONARY SHOCKWAVE FILTER CLEANING SYSTEMS
- TRUE LEDGE-LESS CONSTRUCTION FOR OSHA/NFPA COMPLIANCE
- IMPROVED AIR DELIVERY SYSTEM—RATED FOR 5 MILLION CYCLES WITH NO REQUIRED MAINTENANCE
- LARGE CAPACITY DUST DRAWER OR HOPPER
- HINGED DOOR FILTER ACCESS
- FULL ELECTRICAL CONTROL PACKAGE—STD.
- STURDY SUPPORT SYSTEM—DOESN'T REQUIRE
- CROSS-BRACING IN SIESMIC ZONES 1, 2, & 3, OR IN WIND LOAD RATING ≤115 MPH
- HEAVY DUTY 12 GA. CONSTRUCTION
- RATED FOR INDOOR AND/OR OUTDOOR INSTALLATION
- INDOOR / OURDOOR RATED WITH NEW ROBUST
- VALVE SYSTEM RATED TO (-40°) - DOES NOT REQUIRE HEATERS IN COLD CLIMATES

OPTIONS:

- HOPPER SETUP WITH LONG LEGS AND BARREL LID
- KIT. OR LOW PROFILE UNIT WITH DUST DRAWERS
- INLET PLENUM
- SILENCER.
- HEPA AFTERFILTER.
- VARIETY OF CARTRIDGE FILTER OPTIONS.
- 5HP, 7 1/2HP OR 10HP PLUG FANS
- 10, 15, 20 HP TOP MOUNT / REMOTE MOUNT FANS
- MAGNAHELIC OR PHOTOHELIC GAUGES.
- DROP-OUT MODULES FOR HEAVY PARTICULATE
- INTELLI-TOUCH® ENERGY SAVING CONTROLS
- EXPLOSION VENTS, BACKBLAST DAMPERS,
- OSHA/NFPA COMBUSTIBLE DUST COMPLIANCE PACKAGE
- SPARK ARRESTORS
- PAINT OPTIONS: BAKED ENAMEL OR EPOXY COAT INSIDE & OUT

HARVESTER SERIES DUST COLLECTOR SPECIFICATIONS:

OVERALL DIMENSIONS:

135" H X 54" W X 49" D WITH LONG LEGS/HOPPER & INLET PLENUM
88" H X 54" W X 49" D WITH SHORT LEGS/DUST TRAY & INLET PLENUM

WEIGHT:

*1,728 LBS APROX.

*2,000 LBS SHIPPING WEIGHT

*WEIGHT VARIES DEPENDING ON OPTIONS SELECTED

CABINET:

HEAVY DUTY 12 GAUGE GALVANEAL STEEL WITH EXTERIOR SURFACES GROUND SMOOTH

FINISH:

INDUSTRIAL GRADE CHARCOAL, TEXTURED BAKED ENAMEL PAINT IN SIDE AND OUT. OPTIONAL EPOXY COAT INSIDE & OUT AVAILABLE

FILTER ACCESS:

EASY FRONT ACCESS THROUGH FILTER CAPS

MOTOR:

SINGLE SPEED, 5 HP, 3 PHASE, 208-230/460V, 60 HZ, PREMIUM EFFICIENCY, TEFC MOTOR. OPTIONAL 7.5 HP, 10 HP AVAILABLE
10,15, 20, HP TOP MOUNT / REMOTE MOUNT FANS AVAILABLE

BLOWER:

DIRECT DRIVE, HIGH STATIC, BACKWARD INCLINED PLUG FAN
10,15, 20, HP TOP MOUNT / REMOTE MOUNT FANS AVAILABLE

AIR VOLUME:

DEPENDENT UPON OPTIONS SELECTED—CONSULT FAN CURVES FOR SPECIFICS

FILTRATION:

FOUR EA. HIGH EFFICIENCY, 80/20 BLEND, FIRE-RETARDANT CARTRIDGE FILTERS, 250 SF MEDIA PER FILTER, 1,000 SF TOTAL MEDIA

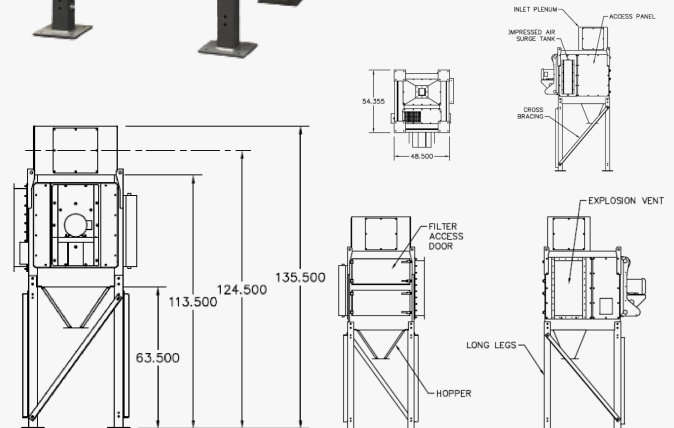
SHOCKWAVE CLEANING SYSTEM:

SIMPLE, YET EFFECTIVE CLEANING SYSTEM, THAT DISLODGES PARTICLES FROM THE FILTER TO A HOPPER TO EXTEND FILTER LIFE



TYPICAL APPLICATIONS:

- WELD SMOKE AND FUMES
- GRINDING / POLISHING / BUFFING DUST
- COMPOSITES DUSTS
- ABRASIVE BLAST DUSTS
- SMOKE/ FUMES FROM LASER/ PLASMA CUTTING
- PHARMACEUTICAL / FOOD PROCESSES



FILTER CHANGE INDICATOR:

MAGNEHELIC GAUGE OR PHOTOHELIC GAUGE

CONTROLS:

FULL ELECTRICAL CONTROLS STANDARD

CABINET PRESSURE RATING:

+/- 30 INCHES WC

SEISMIC DATA:

SS=0.551 S1=0.132

OFF-LINE CARTRIDGE CLEANING:

STANDARD EQUIPMENT DESIGNED TO CLEAN FILTERS AFTER UNIT IS TURNED OFF FOR OPTIMAL OFF-LINE CARTRIDGE CLEANING. TIMER CAN BE ADJUSTED BETWEEN 0 AND 17 MINUTES

INLET / EXHAUST:

OPTIONAL INLET PLENUM WITH THREE EA. 14" X 14" OPENINGS
EXHAUST - OUT BOTTOM OF UNIT

MAX CURRENT

5 HP, 230/460V—12.8 / 6.4 AMP

7.5 HP, 230/460V—19.0 / 9.5 AMP

10 HP, 230/460V—24.6 / 12.3 AMP

15HP, 230/460V— 35.0 / 17.5 AMP

20 HP, 230/460V—47.0 / 23.5 AMP

NOISE LEVELS:

DEPENDENT UPON OPTIONS SELECTED—CONSULT FACTORY

WIND LOAD RATING:

115 MPH / 160 MPH WITH CROSS-BRACING

COMPRESSED AIR:

REQUIRES 80—90 PSI CLEAN, DRY AIR & MINIMUM 3/4" AIR LINE

COLLECTION OPTIONS:

HOPPER WITH 10" DIA COLLAR OR DUST TRAY