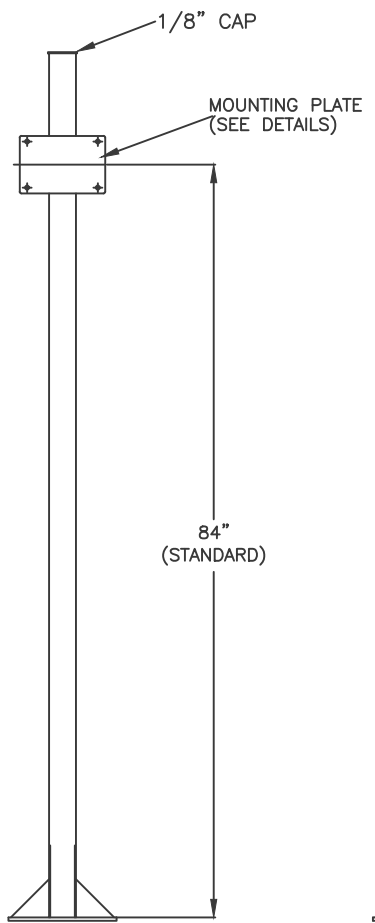


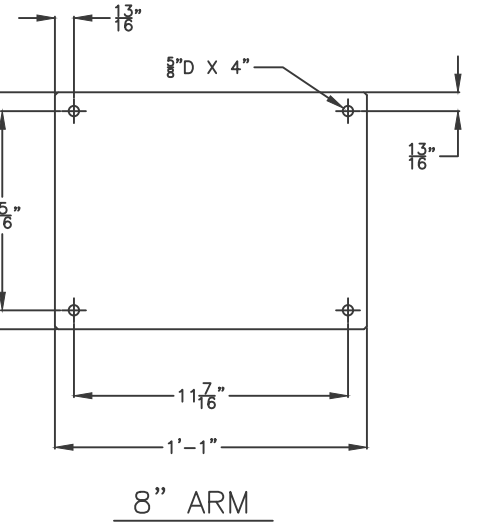
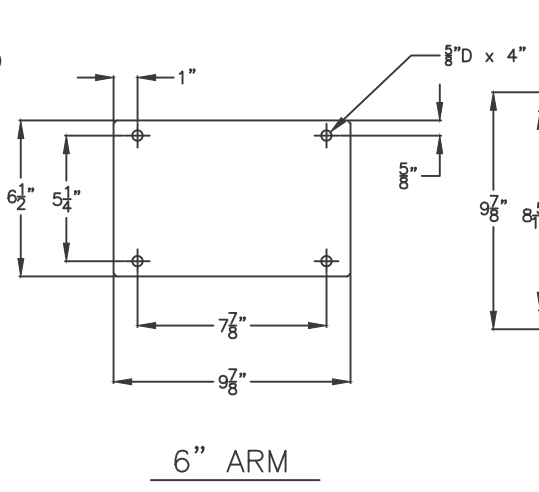
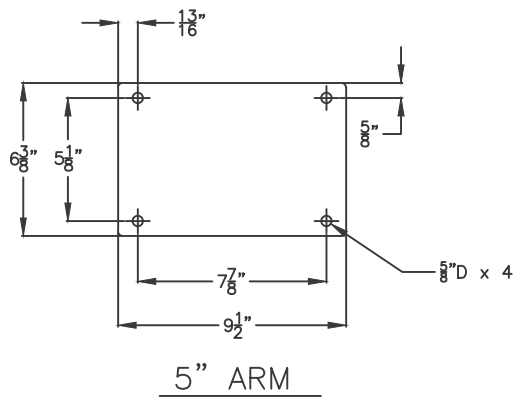
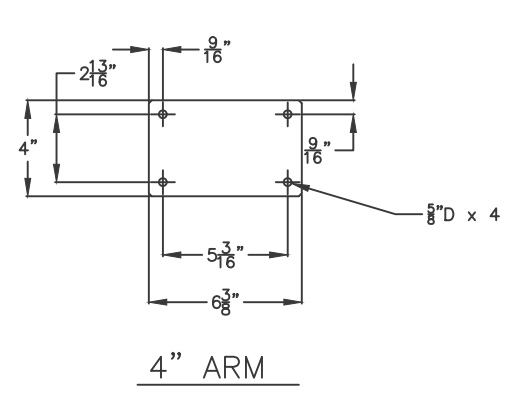
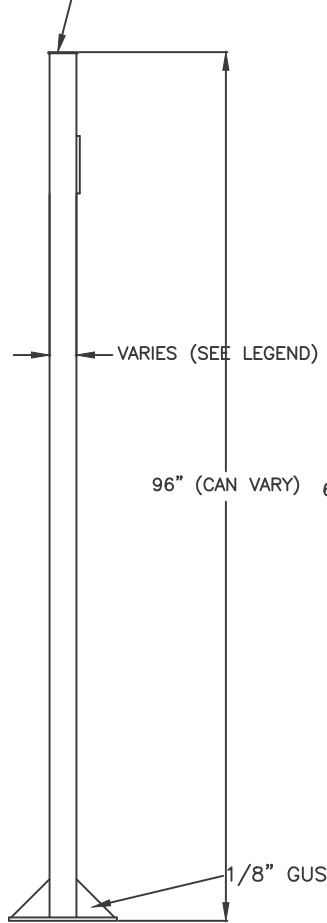
LEGEND							
ARM DIA.	PART NUMBER	BASE PLATE	WEDGE ANCHOR	SQUARE POST	MATING BRACKET PLATE	MOUNTING PLATE HOLE PATTERN	
						A	B
4"	W06-01-1084	10x10x3/8	1/2 x 5	2-1/2 x 1/8	1/4 x 6-3/8 x 4	2-3/4"	5-1/8"
5"	W06-01-1284	12x12x3/8	1/2 x 5	3 x 1/8	1/4 x 9-1/2 x 6-3/8	5-1/8"	7-7/8"
6"	W06-01-1684	12x12x3/8	1/2 x 5	3 x 1/8	1/4 x 9-7/8 x 6-1/2	5-1/4"	7-7/8"
8"	W06-01-2084	14x14x3/8	1/2 x 5	4 x 1/8	1/4 x 13 x 9-7/8	8-1/4"	11-7/16"

NOTE: WHEN USING 6" EXTENDED WALL BRACKETS FOR 6" STANCHIONS REFER TO DRAWING 102703 FOR PLATE MATING PATTERN.

NOTE: 45 DEG. BRACES MAY BE ADDED BY END USER IF NEEDED FOR RIGIDITY



TYPICAL STANCHION WELDMENT



TYPICAL MOUNTING PLATES

NOTE:
ALL SURFACES TO BE SPRAYED
FLAT BLACK ENAMEL

1		FUME ARM FLOOR STANCHION (MILD STEEL)		FFPS-100
		APRIL 16, 2019		3/16" = 1'-0"