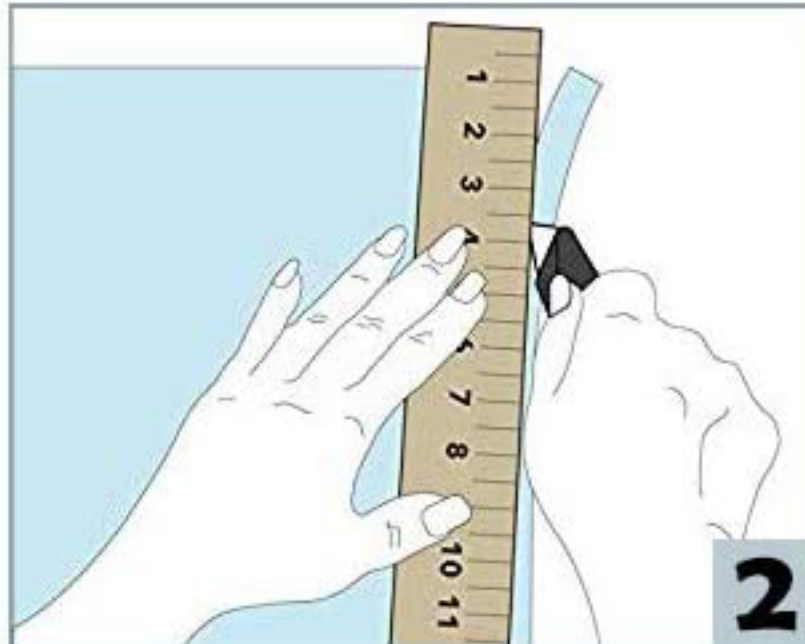


9 STEPS TO INSTALL YOUR FILM



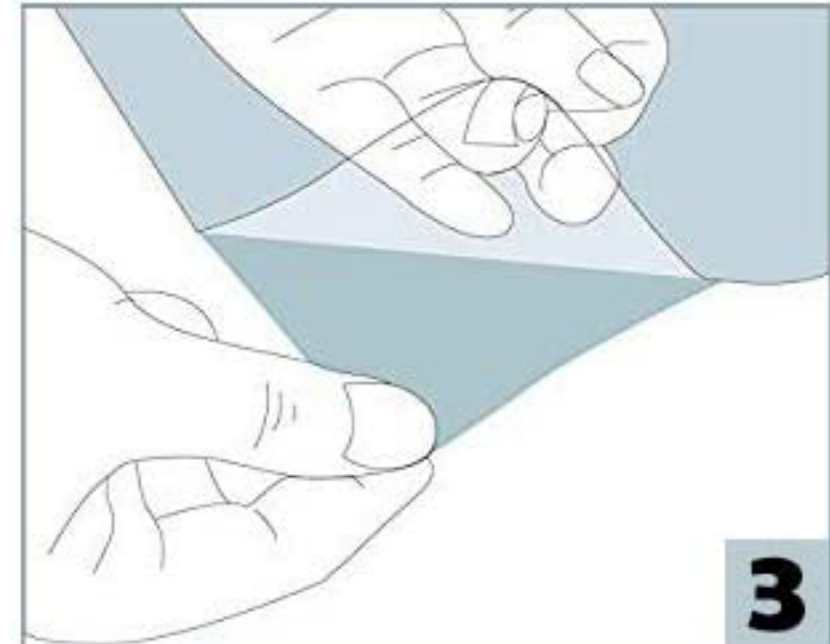
1

1. CLEAN THE WINDOW
make sure no stain is left



2

2. MEASURE & CUT THE FILM
2-3cm wider on each side



3

3. PEEL OFF TRANSPARENT
BACKING



4

4. Prepare enough diluted
soapy water in a spray bottle.



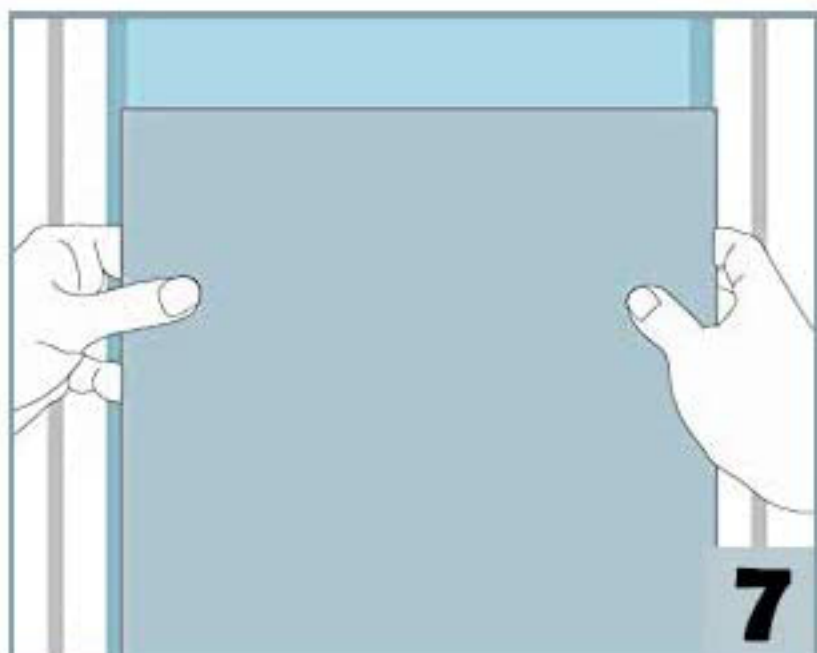
5

5. Spray the window surface
with the soapy water.



6

6. Spray enough soapy water
on the back side of the film.



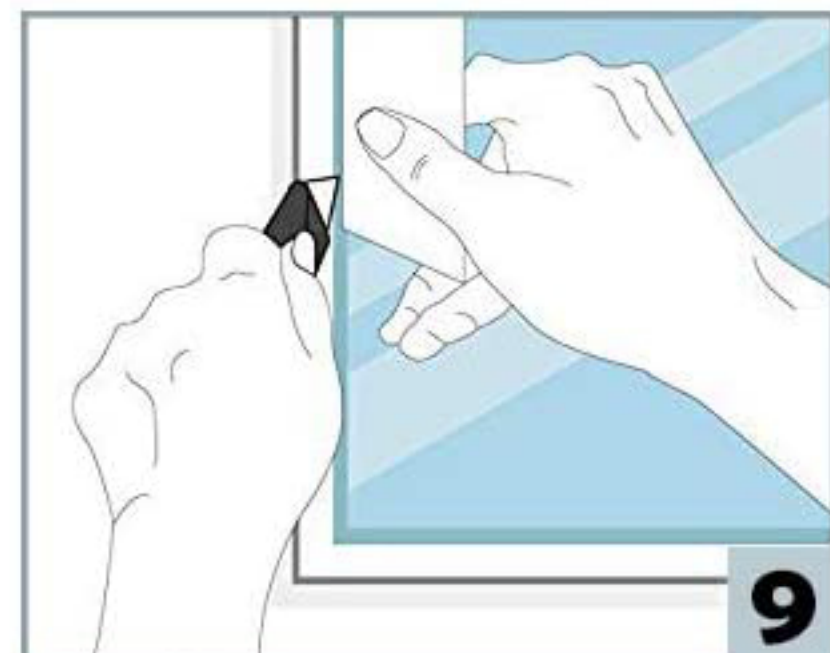
7

7. Paste the static cling side
against the glass.



8

8. Slide squeegee over the
bubbles.



9

9. Cut off the redundant parts
of the film.