

## "D-type" Sensor

If you received an ADOR unit after 5/15/15, it is likely you have the new type sensor we call the "D" sensor.

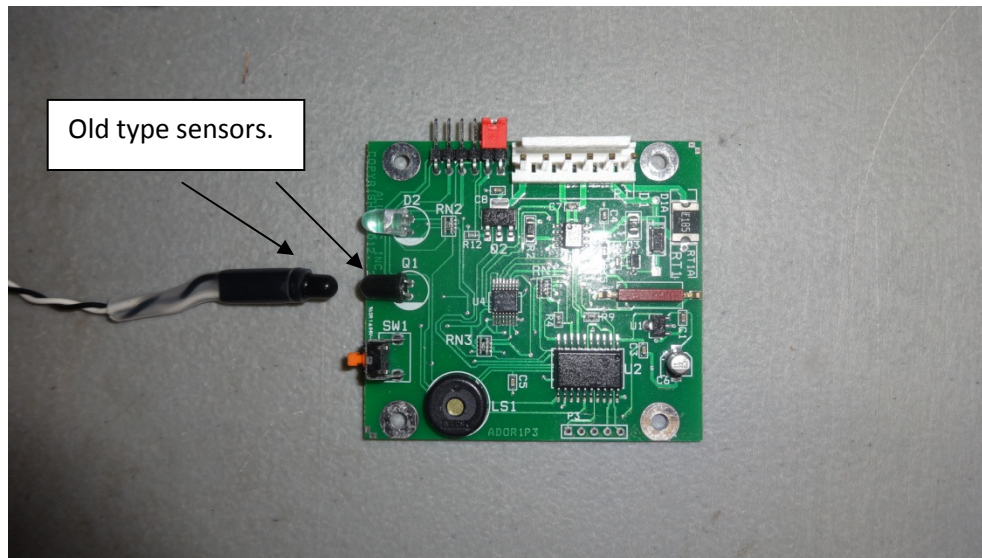
If you use an external sensor, that sensor must be compatible with the electronic board. Look at your board and look at the sensor on the board—it must look just like the sensor on your external sensor if you have an external sensor. So if you ordered an external sensor WITH your ADOR order, we will have sent you the compatible sensor. No problem.

But if for some reason you later decide to separately order an external sensor, please tell whether or not your board has the D-type sensor so we can send you the correct type sensor.

---

### PICTURE OF THE OLDER DESIGN ADOR BOARD WITH THE MATCHING EXTERNAL SENSOR

Note the sensor is BLACK and almost ¼" diameter:



### PICTURE OF THE NEWER DESIGN ADOR BOARD WITH D-TYPE SENSOR AND WITH D-TYPE EXTERNAL SENSOR:

Note that the D-type sensor is bluish-grey and about 1/8" diameter.

