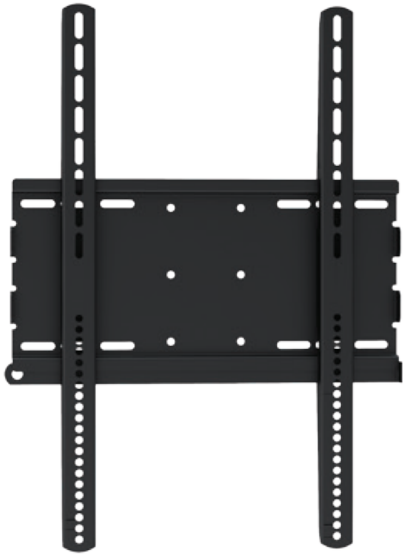


# Low-Profile Portrait Wall Mount - AS64F



Screen Size



Maximum Weight



Flat Profile



Portrait



## Features

- Designed for commercial use
- Suitable for most 32"-70" screens
- Fit mounting patterns up to 410x600mm
- Maximum VESA pattern: 400x600mm
- Maximum hole pattern: 400x610mm
- Mounting profile from wall: 33mm
- Maximum weight capacity: 70kg/154lbs
- Open design for easy cable and electrical access
- Anti-theft security feature (requires padlock)

## Specifications

Mount Type	Fixed Portrait Wall Mount
Mounting Pattern	Universal
Material	Steel
Material Thickness	1.5mm
Recommended Screen Size	32"-70"
Weight Capacity	70kg/154lbs
Load Tested	4 times weight capacity approved
Maximum Hole Pattern (WxH)	410x600mm
Compatible VESA Patterns	200x200, 400x200, 300x300, 400x400, 600x400, 400x600
Maximum VESA Pattern	400x600
Maximum Hole Pattern	410x610
Tilt	0°
Swivel	0°
Level Adjustment	0°
Rotation	0°
Profile	33mm
Anti-theft	Yes

## Technical Drawing

