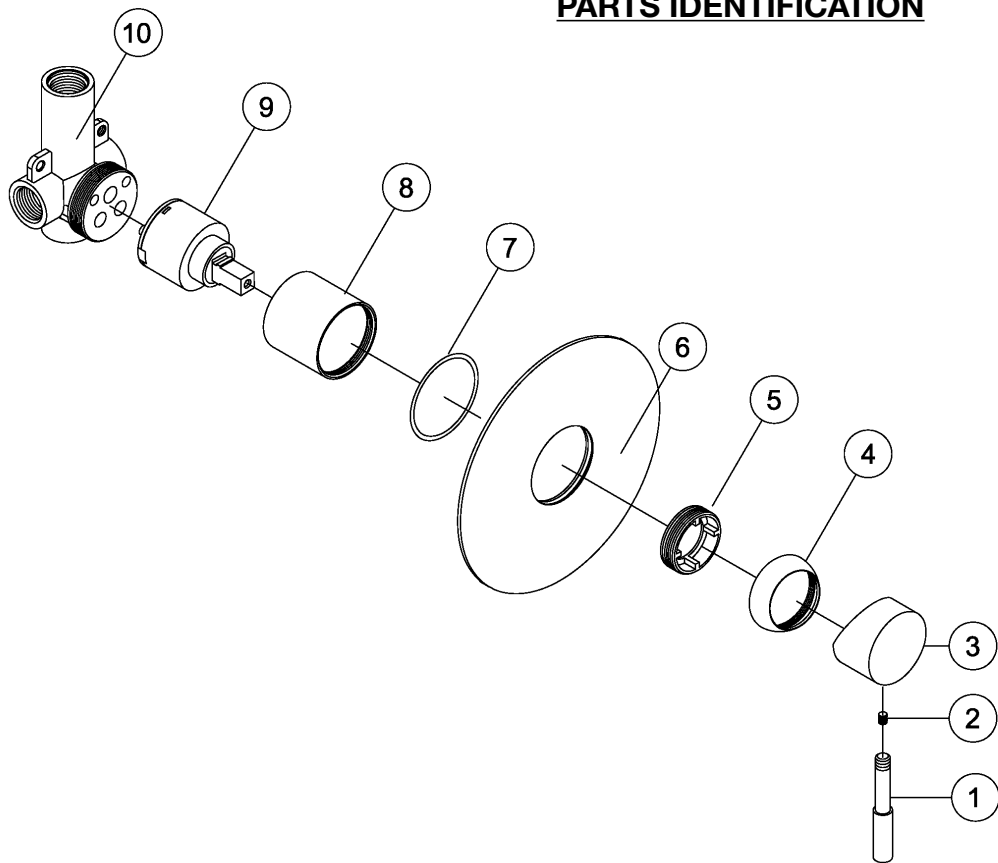


PARTS IDENTIFICATION



CITY LIFE INSTALLATION INSTRUCTION

CL.2000



IMPORTANT!

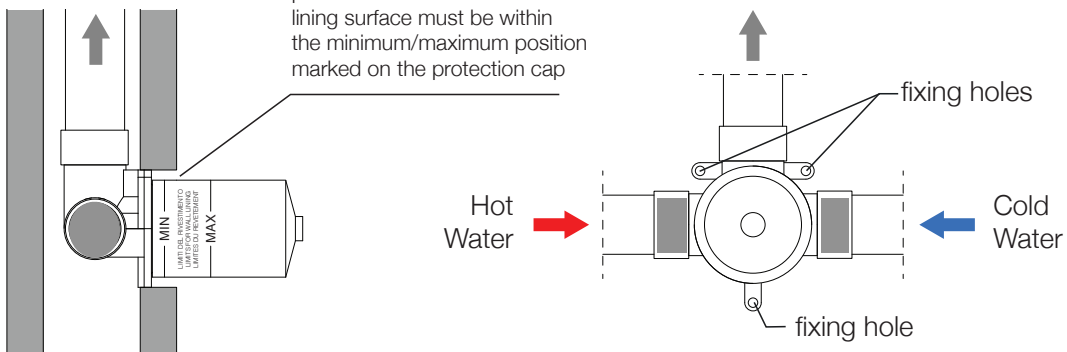
Please read this instruction **Prior** to installation



T 1300 837 688 E info@verotti.com
www.verotti.com

INSTALLATION

please note: the finished wall lining surface must be within the minimum/maximum position marked on the protection cap



BODY INSTALLATION -

1. Flush the pipe work thoroughly prior to installation.
2. Leave plastic cover in place and secure the body to the supporting timber noggin ensuring that it is orientated square and vertical
3. Connect Hot + Cold water supply and outlet to the concealed valve
4. Pressure test for leaks
5. Sheet the wall using water resistant board or equivalent. Please refer to diagram above.

COVER PLATE INSTALLATION -

1. Once tiling is complete remove the plastic cover from the body sleeve
2. Apply silicone to the back of the cover plate (Part 6) and slide over body flange (Part 8) creating a seal from the cover plate to the finished wall .
3. Push Handle (Part 3) over Cartridge adaption and tighten grub screw (Part 2) firmly
4. Screw Pin Lever (Part 1) into the handle housing and tighten firmly .

NOTE- It is the responsibility of the installer to ensure a waterproof seal is achieved between the product and mounting surface. If in doubt about the quality of the seal, remove the product and re-install

IMPORTANT RECOMMENDATIONS FOR INSTALLATION

Installation should comply to AS/NZS3500.1 2003 or relevant local requirement.
Not suitable for gravity feed application.
Hot & cold water inlet pressures should be equal.



WATER PRESSURE

Operating static pressure is 150 - 500kpa. If pressure exceeds this, then an approved pressure limiting valve must be installed.



PRE-FLUSH

Always flush out the pipework before connecting any faucets. Damage caused to the faucet by debris coming through the pipework is not covered under warranty.



WATER TEMPERATURE

Maximum hot water temperature is 75 degree.



ATTENTION!

Failure to do so will void the warranty.