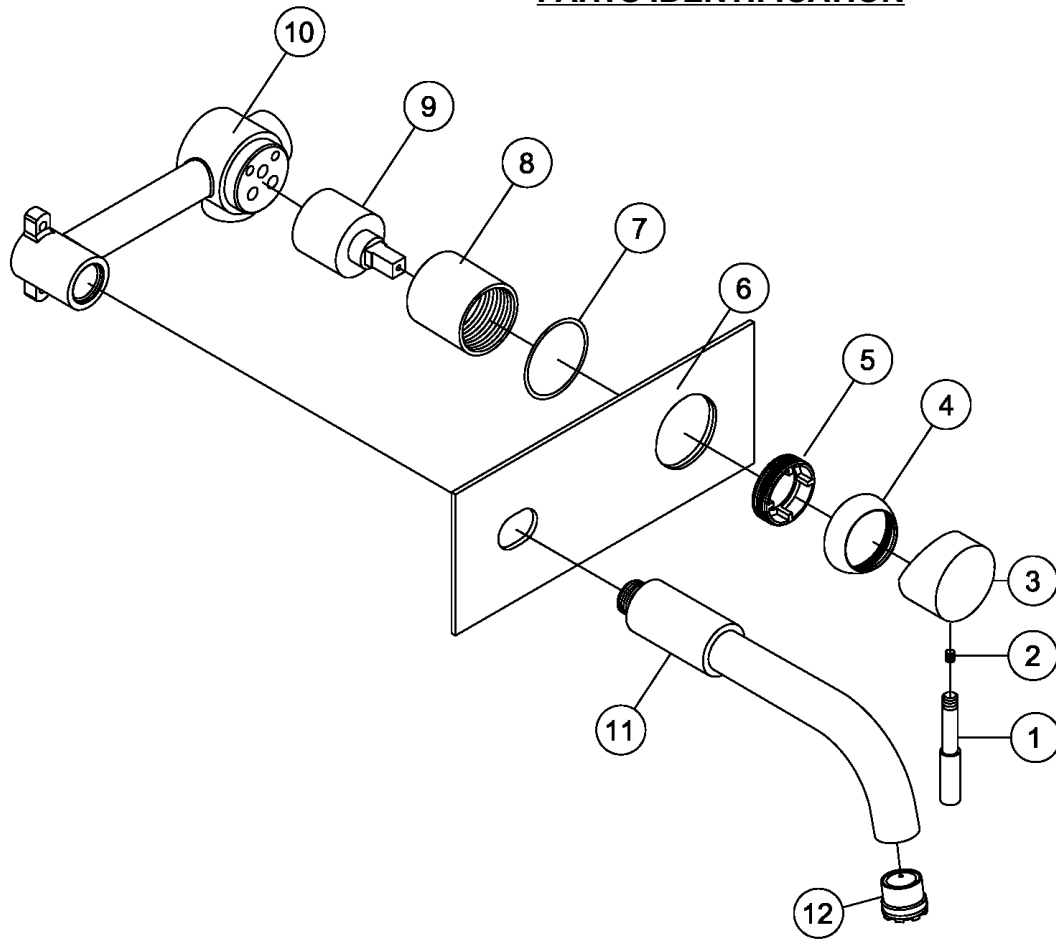


PARTS IDENTIFICATION



CITY LIFE INSTALLATION INSTRUCTION

CL.1100



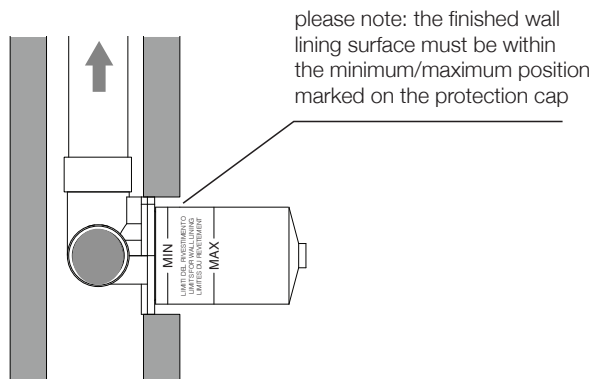
IMPORTANT!

Please read this instruction **Prior** to installation



T 1300 837 688 E info@verotti.com
www.verotti.com

INSTALLATION



BODY INSTALLATION -

1. Flush the pipe work thoroughly prior to installation.
2. Leave plastic covers in place and secure the body to the supporting timber noggin ensuring that it is orientated square and vertical
3. Connect Hot + Cold water supply and both outlets to the concealed valve. Please ensure outlets are connected correctly.
4. Pressure test for leaks
5. Sheet the wall using water resistant board or equivalent. Please refer to diagram above.

COVER PLATE INSTALLATION -

1. Once tiling is complete remove the plastic cover from both the body sleeve + Breach Sleeve
2. Apply silicone to the back of the cover plate (Part 6) and slide over body (Part 8) creating a seal from the cover plate to the finished wall .
3. Push Handle (Part 3) over Cartridge adaption and tighten grub screw (Part 2) firmly . Screw spout thread into breach until it meets the cover plate
4. Screw Pin Lever (Part 1) into the handle housing and tighten firmly .

NOTE-It is the responsibility of the installer to ensure a waterproof seal is achieved between the product and mounting surface. If in doubt about the quality of the seal, remove the product and re-install

IMPORTANT RECOMMENDATIONS FOR INSTALLATION

Installation should comply to AS/NZS3500.1 2003 or relevant local requirement.
Not suitable for gravity feed application.
Hot & cold water inlet pressures should be equal.



WATER PRESSURE

Operating static pressure is 150 - 500kpa. If pressure exceeds this, then an approved pressure limiting valve must be installed.



PRE-FLUSH

Always flush out the pipework before connecting any faucets. Damage caused to the faucet by debris coming through the pipework is not covered under warranty.



WATER TEMPERATURE

Maximum hot water temperature is 75 degree.



ATTENTION!

Failure to do so will void the warranty.