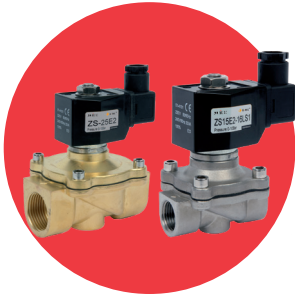


ZS Series N/C

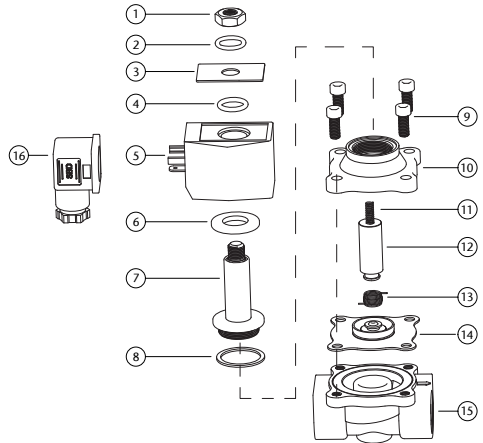
Solenoid Valves Normally Closed



Features

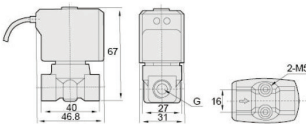
- Available in 230VAC, 110VAC, 12VDC, 24VDC, 24VAC
- Thread standard: ISO 228/1
- Coil Rating: IP 65
- Coil Duty Cycle: 100%
- Available sizes -
1/8", 1/4", 3/8", 1/2", 3/4", 1", 1.1/4", 1.1/2", 2"
- Flanged version available in
1", 1.1/4", 1.1/2", 2", 2.1/2", 3", 4"

N.	Part Name	Materials
1	Locknut	Stainless Steel 302
2	Washer	Stainless Steel 302
3	Plate	Aluminium
4	O-Ring	NBR / EPDM / Viton
5	Coil	Enamelled Wire
6	Baseplate	Plated Steel
7	Plunger Tube Unit	Stainless Steel 304 + 1J117
8	Plunger Tube Seal	PTFE
9	Bolt	Stainless Steel 302
10	Valve Cover	Brass / Stainless Steel 316
11	Plunger Spring	Stainless Steel 304
12	Pilot Unit	Stainless Steel 304 + 1J117
13	Coil Spring	Stainless Steel 304
14	Diaphragm Unit	NBR / EPDM / Viton
15	Body	Brass / Stainless Steel 316
16	Plug	Nylon

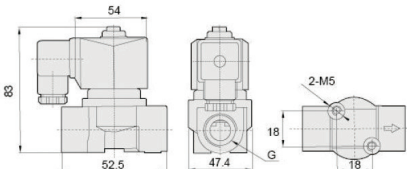


Main Dimensions

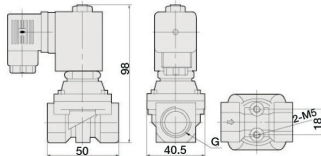
Orifice: 2.5mm
Port: 1/8" & 1/4"



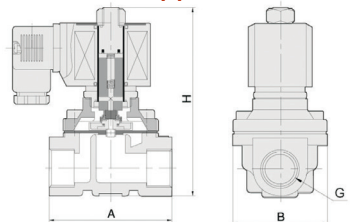
Orifice: 2.5mm
Port: 1/8" & 1/4"



Orifice: 10mm
Port: 1/4", 3/8" & 1/2"



Large Orifice
See table opposite



ZS Series N/C

Port Size (G)	Orifice	Kv Value	Pressure Difference (Bar)						Max. Temp (°C)	VA AC 230V	VA AC 110V	VA AC 24V	W DC 24V	Diaphragm	Main Dimension AxBxH
			Max. Working Pressure			Air / Gas									
			Min.	AC DC	AC DC	AC DC	AC DC	AC DC							
1/8"	2.5	0.2	0	7 5	7 5	7 5	80	20	28	55	24	NBR	-		
	2.5	0.2	0	7 5	7 5	- -	120	20	28	55	24	EPDM	-		
	2.5	0.2	0	7 5	7 5	7 5	120	20	28	55	24	VITON	-		
1/4"	2.5	0.2	0	7 5	7 5	7 5	80	20	28	55	24	NBR	-		
	2.5	0.2	0	7 5	7 5	- -	120	20	28	55	24	EPDM	-		
	2.5	0.2	0	7 5	7 5	7 5	120	20	28	55	24	VITON	-		
	10	0.86	0	20 16	20 16	20 16	80	20	28	55	24	NBR	-		
	10	0.86	0	20 16	20 16	- -	120	20	28	55	24	EPDM	-		
	10	0.86	0	20 16	20 16	20 16	120	20	28	55	24	VITON	-		
3/8"	4	0.52	0	8 5	8 5	5 5	80	20	28	55	24	NBR	-		
	4	0.52	0	8 5	8 5	- -	120	20	28	55	24	EPDM	-		
	4	0.52	0	8 5	8 5	5 5	120	20	28	55	24	VITON	-		
	10	1.56	0	20 16	20 16	20 16	80	20	28	55	24	NBR	-		
	10	1.56	0	20 16	20 16	- -	120	20	28	55	24	EPDM	-		
	10	1.56	0	20 16	20 16	20 16	120	20	28	55	24	VITON	-		
	16	4.15	0	10 6	10 6	7 4	80	20	28	55	24	NBR	-		
	16	4.15	0	10 6	10 6	- -	120	20	28	55	24	EPDM	-		
	16	4.15	0	10 6	10 6	7 4	120	20	28	55	24	VITON	-		
1/2"	10	1.64	0	20 16	20 16	20 16	80	20	28	55	24	NBR	-		
	10	1.64	0	20 16	20 16	- -	120	20	28	55	24	EPDM	-		
	10	1.64	0	20 16	20 16	20 16	120	20	28	55	24	VITON	-		
	16	4.15	0	10 6	10 6	7 4	80	20	28	55	24	NBR	-		
	16	4.15	0	10 6	10 6	- -	120	20	28	55	24	EPDM	-		
	16	4.15	0	10 6	10 6	7 4	120	20	28	55	24	VITON	-		
3/4"	20	6.57	0	10 6	10 6	7 4	80	20	28	55	24	NBR	73x57x114		
	20	6.57	0	10 6	10 6	- -	120	20	28	55	24	EPDM	73x57x114		
	20	6.57	0	10 6	10 6	7 4	120	20	28	55	24	VITON	73x57x114		
1"	25	10.37	0	10 6	10 6	7 4	80	20	28	55	24	NBR	99x77x121		
	25	10.37	0	10 6	10 6	- -	120	20	28	55	24	EPDM	99x77x121		
	25	10.37	0	10 6	10 6	7 4	120	20	28	55	24	VITON	99x77x121		
	25	10.37	0	10 6	3 3	- -	120	20	28	55	24	Silicon	99x77x121		
	-	-	-	-	-	-	-	20	28	55	24	Rubber	-		
1 1/4"	35	20.74	0	10 6	10 6	7 4	80	20	28	55	24	NBR	112x86.5x150		
	35	20.74	0	10 6	10 -	- -	120	20	28	55	24	EPDM	112x86.5x150		
	35	20.74	0	10 6	10 6	7 4	120	20	28	55	24	VITON	112x86.5x150		
1 1/2"	40	25.06	0	10 6	10 6	7 4	80	20	28	55	24	NBR	123x94x160		
	40	25.06	0	10 6	10 -	- -	120	20	28	55	24	EPDM	123x94x160		
	40	25.06	0	10 6	10 6	7 7	120	20	28	55	24	VITON	123x94x160		
2"	50	41.47	0	10 6	10 6	7 4	80	20	28	55	24	NBR	168x123x183		
	50	41.47	0	10 6	10 -	- -	120	20	28	55	24	EPDM	168x123x183		
	50	41.47	0	10 6	10 6	7 4	120	20	28	55	24	VITON	168x123x183		