

FESTO PNEUMATIC PRODUCTS



416

FESTO
Blue Star Range Overview
Pneumatic Drive Type Codes



417

FESTO
Pneumatic Drives



424

FESTO
Pneumatic Drive Accessories



426

FESTO
Proximity Sensors
and Accessories



427

FESTO
Quarter Turn Actuators
& Accessories



428

FESTO
Solenoid Valves
and Accessories

FESTO PNEUMATIC PRODUCTS

New
Additions



434

FESTO
Valves and Accessories



438

FESTO
Compressed Air Preparation
& Accessories



441

FESTO
Pressure Sensors
& Accessories



443

FESTO
Pneumatic Connection
Technology – Tubing



445

FESTO
Pneumatic Connection
Technology – Fittings



453

FESTO
Pneumatic Connection
Technology – Silencers



FESTO BLUE STAR RANGE

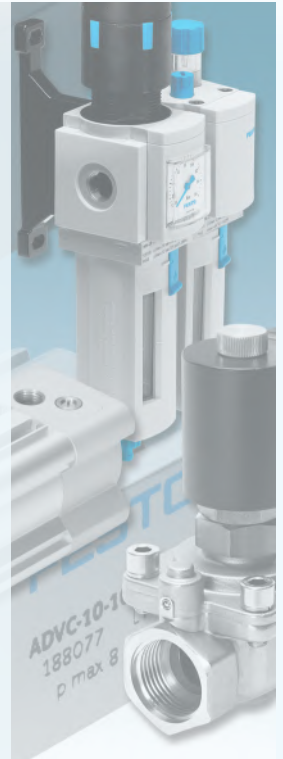
Festo, the leading supplier of automation equipment, now offers more than 2,200 Blue Star core products for pneumatics, including cylinders, valves, regulators, sensors and accessories, as well as products that meet the specific requirements of process automation. These include solenoid, NAMUR and angle seat valves, positioners, sensor boxes, ball valves and ball valve actuator units, products for air preparation and accessories.

WHY SO SPECIAL?

Festo's state of the art production facilities ensure that all of the products highlighted with the Blue Star are of superb quality at attractive prices, as well as having excellent delivery times, even in high quantities. Great news for machine builders and buyers!

WHAT TO LOOK FOR

Look for the Blue Star symbol throughout this section of the catalogue.



PNEUMATIC DRIVE TYPE CODES

ADVC - 6 - 5 - A - P - A

Type		Bore Size		Stroke Size		Piston rod thread		Cushioning		Position sensing	
Code	Description	Code	Description	Code	Description	Code	Description	Code	Description	Code	Description
DSNU	Double acting standard cylinder	6	6 mm	5	5 mm	A	Male thread	P	Flexible cushioning rings / plates at both ends		No position sensing
DSBC	Double acting standard cylinder	8	8 mm	10	10 mm	I	Female thread			A	For proximity sensing
ADVC	Double acting short stroke cylinder	10	10 mm	15	15 mm		Without thread	PPS	Unique pneumatic end position cushioning	N3	Contactless position sensing
ADN	Double acting	12	12 mm	20	20 mm						
		16	16 mm	25	25 mm						
		20	20 mm	30	30 mm						
		25	25 mm	35	35 mm						
		32	32 mm	40	40 mm						
		40	40 mm	50	50 mm						
		50	50 mm	60	60 mm						
		63	63 mm	70	70 mm						
		80	80 mm	80	80 mm						
		100	100 mm	100	100 mm						
		125	125 mm	125	125 mm						
				150	150 mm						
				160	160 mm						
				200	200 mm						
				250	250 mm						
				300	300 mm						
				320	320 mm						
				400	400 mm						
				500	500 mm						



ROUNDLINE CYLINDERS



FEATURES

- Aluminium barrel and end caps
- Lightweight and corrosion resistant
- Suitable for cylinder switches type SME (see page 426)
- 8 – 25 mm bore – Elastic cushioning rings/pads at both ends
- 16 – 25 mm bore – Pneumatic cushioning, self-adjusting at both ends
- Position sensing via proximity sensor (addition)
- For very high requirements on running characteristics, service life and load carrying ability

DSNU TO ISO 6432
DOUBLE ACTING WITH ELASTIC CUSHIONING RING
8 MM BORE

3110

PART NUMBER	TYPE	STROKE (MM)	PRICE
FES19177	DSNU-8-10-P-A	10	£33.14
FES19178	DSNU-8-25-P-A	25	£33.29
FES19179	DSNU-8-40-P-A	40	£33.43
FES19180	DSNU-8-50-P-A	50	£33.51
FES19181	DSNU-8-80-P-A	80	£33.80
FES19182	DSNU-8-100-P-A	100	£34.00

10 MM BORE

FES19183	DSNU-10-10-P-A	10	£35.44
FES19184	DSNU-10-25-P-A	25	£35.59
FES19185	DSNU-10-40-P-A	40	£35.75
FES19186	DSNU-10-50-P-A	50	£35.87
FES19187	DSNU-10-80-P-A	80	£36.17
FES19188	DSNU-10-100-P-A	100	£36.37

12 MM BORE

FES19189	DSNU-12-10-P-A	10	£37.78
FES1908255	DSNU-12-15-P-A	15	£37.85
FES19190	DSNU-12-25-P-A	25	£37.97
FES1908257	DSNU-12-30-P-A	30	£38.04
FES19191	DSNU-12-40-P-A	40	£38.17
FES19192	DSNU-12-50-P-A	50	£38.31
FES1908258	DSNU-12-60-P-A	60	£38.46
FES19193	DSNU-12-80-P-A	80	£38.72
FES19194	DSNU-12-100-P-A	100	£38.99
FES19195	DSNU-12-125-P-A	125	£39.33
FES19196	DSNU-12-160-P-A	160	£39.80
FES19197	DSNU-12-200-P-A	200	£40.34

16 MM BORE

FES19198	DSNU-16-10-P-A	10	£42.67
FES1908259	DSNU-16-15-P-A	15	£42.76
FES1908260	DSNU-16-20-P-A	20	£42.86
FES19199	DSNU-16-25-P-A	25	£42.94
FES1908261	DSNU-16-30-P-A	30	£43.02
FES1908262	DSNU-16-35-P-A	35	£43.10
FES19200	DSNU-16-40-P-A	40	£43.17
FES19201	DSNU-16-50-P-A	50	£43.34
FES1908263	DSNU-16-60-P-A	60	£43.51
FES1908264	DSNU-16-70-P-A	70	£43.68
FES19202	DSNU-16-80-P-A	80	£43.85
FES19203	DSNU-16-100-P-A	100	£44.18
FES19204	DSNU-16-125-P-A	125	£44.60
FES1908265	DSNU-16-150-P-A	150	£45.02
FES19205	DSNU-16-160-P-A	160	£45.17
FES19206	DSNU-16-200-P-A	200	£45.84

20 MM BORE

PART NUMBER	TYPE	STROKE (MM)	PRICE
FES19207	DSNU-20-10-P-A	10	£46.46
FES1908282	DSNU-20-15-P-A	15	£46.57
FES1908283	DSNU-20-20-P-A	20	£46.70
FES19208	DSNU-20-25-P-A	25	£46.81
FES1908284	DSNU-20-30-P-A	30	£46.91
FES1908285	DSNU-20-35-P-A	35	£47.01
FES19209	DSNU-20-40-P-A	40	£47.12
FES19210	DSNU-20-50-P-A	50	£47.35
FES1908286	DSNU-20-60-P-A	60	£47.57
FES1908287	DSNU-20-70-P-A	70	£47.79
FES19211	DSNU-20-80-P-A	80	£48.01
FES19212	DSNU-20-100-P-A	100	£48.43
FES19213	DSNU-20-125-P-A	125	£48.97
FES1908288	DSNU-20-150-P-A	150	£49.54
FES19214	DSNU-20-160-P-A	160	£49.75
FES19215	DSNU-20-200-P-A	200	£50.62
FES19216	DSNU-20-250-P-A	250	£51.73
FES19217	DSNU-20-300-P-A	300	£52.80
FES34718	DSNU-20-320-P-A	320	£53.24

25 MM BORE

FES19218	DSNU-25-10-P-A	10	£49.31
FES1908305	DSNU-25-15-P-A	15	£49.43
FES1908306	DSNU-25-20-P-A	20	£49.57
FES19219	DSNU-25-25-P-A	25	£49.68
FES1908307	DSNU-25-30-P-A	30	£49.82
FES1908308	DSNU-25-35-P-A	35	£49.93
FES19220	DSNU-25-40-P-A	40	£50.06
FES19221	DSNU-25-50-P-A	50	£50.31
FES1908309	DSNU-25-60-P-A	60	£50.56
FES1908310	DSNU-25-70-P-A	70	£50.80
FES19222	DSNU-25-80-P-A	80	£51.06
FES19224	DSNU-25-125-P-A	125	£52.17
FES1908311	DSNU-25-150-P-A	150	£52.80
FES19225	DSNU-25-160-P-A	160	£53.06
FES19226	DSNU-25-200-P-A	200	£54.04
FES19227	DSNU-25-250-P-A	250	£55.29
FES19228	DSNU-25-300-P-A	300	£56.55
FES34719	DSNU-25-320-P-A	320	£57.05
FES35191	DSNU-25-400-P-A	400	£59.04
FES35192	DSNU-25-500-P-A	500	£61.54



ROUNDLINE CYLINDERS

FEATURES

- Aluminium barrel and end caps
- Lightweight and corrosion resistant
- Suitable for cylinder switches type SME
- 8 – 12 mm bore – Elastic cushioning rings/pads at both ends
- 16 – 25 mm bore – Pneumatic cushioning, self-adjusting at both ends
- Position sensing via proximity sensor (addition)
- For very high requirements on running characteristics, service life and load carrying ability

PPS – UNIQUE PNEUMATIC END POSITION CUSHIONING

- No adjustment necessary with self-adjusting cushioning
- Automatically adapts to actuator load and speed, which means reduced set-up times and increased operating throughput
- Use with high speeds and machine cycle rates
- Absorbs more energy, which makes it possible to use higher velocities and masses
- Dynamic yet gentle movement into cylinders' end position
- Unique ports allow for optimal venting



DSNU TO ISO 6432 – DOUBLE ACTING WITH PNEUMATIC END POSITION CUSHIONING

16 MM BORE

3110

PART NUMBER	TYPE	STROKE (MM)	PRICE
FES1908274	DSNU-16-10-PPS-A	10	£47.90
FES1908275	DSNU-16-15-PPS-A	15	£47.99
FES1908276	DSNU-16-20-PPS-A	20	£48.06
FES559263	DSNU-16-25-PPS-A	25	£48.13
FES1908277	DSNU-16-30-PPS-A	30	£48.21
FES1908278	DSNU-16-35-PPS-A	35	£48.28
FES559264	DSNU-16-40-PPS-A	40	£48.33
FES559265	DSNU-16-50-PPS-A	50	£48.55
FES1908279	DSNU-16-60-PPS-A	60	£48.70
FES1908280	DSNU-16-70-PPS-A	70	£48.85
FES559266	DSNU-16-80-PPS-A	80	£48.96
FES559267	DSNU-16-100-PPS-A	100	£49.28
FES559268	DSNU-16-125-PPS-A	125	£49.68
FES1908281	DSNU-16-150-PPS-A	150	£50.16
FES559269	DSNU-16-160-PPS-A	160	£50.19
FES559270	DSNU-16-200-PPS-A	200	£50.94

20 MM BORE

FES1908297	DSNU-20-10-PPS-A	10	£52.50
FES1908298	DSNU-20-15-PPS-A	15	£52.60
FES1908299	DSNU-20-20-PPS-A	20	£52.70
FES559271	DSNU-20-25-PPS-A	25	£52.79
FES1908300	DSNU-20-30-PPS-A	30	£52.90
FES1908301	DSNU-20-35-PPS-A	35	£53.04
FES559272	DSNU-20-40-PPS-A	40	£53.11
FES559273	DSNU-20-50-PPS-A	50	£53.31
FES1908302	DSNU-20-60-PPS-A	60	£53.54
FES1908303	DSNU-20-70-PPS-A	70	£53.77
FES559274	DSNU-20-80-PPS-A	80	£54.04
FES559275	DSNU-20-100-PPS-A	100	£54.48
FES559276	DSNU-20-125-PPS-A	125	£54.99
FES1908304	DSNU-20-150-PPS-A	150	£55.48
FES559277	DSNU-20-160-PPS-A	160	£55.70
FES559278	DSNU-20-200-PPS-A	200	£56.53
FES559279	DSNU-20-250-PPS-A	250	£57.68
FES559280	DSNU-20-300-PPS-A	300	£58.72
FES559281	DSNU-20-320-PPS-A	320	£59.15

25 MM BORE

PART NUMBER	TYPE	STROKE (MM)	PRICE
FES1908320	DSNU-25-10-PPS-A	10	£56.07
FES1908321	DSNU-25-15-PPS-A	15	£56.19
FES1908322	DSNU-25-20-PPS-A	20	£56.30
FES559282	DSNU-25-25-PPS-A	25	£56.45
FES1908323	DSNU-25-30-PPS-A	30	£56.56
FES1908324	DSNU-25-35-PPS-A	35	£56.67
FES559283	DSNU-25-40-PPS-A	40	£56.86
FES559284	DSNU-25-50-PPS-A	50	£57.18
FES1908325	DSNU-25-60-PPS-A	60	£57.28
FES1908326	DSNU-25-70-PPS-A	70	£57.55
FES559285	DSNU-25-80-PPS-A	80	£57.79
FES559286	DSNU-25-100-PPS-A	100	£58.31
FES559287	DSNU-25-125-PPS-A	125	£58.92
FES1908327	DSNU-25-150-PPS-A	150	£59.54
FES559288	DSNU-25-160-PPS-A	160	£59.77
FES559289	DSNU-25-200-PPS-A	200	£60.80
FES559290	DSNU-25-250-PPS-A	250	£62.06
FES559291	DSNU-25-300-PPS-A	300	£63.20
FES559292	DSNU-25-320-PPS-A	320	£63.82
FES559293	DSNU-25-400-PPS-A	400	£65.69
FES559294	DSNU-25-500-PPS-A	500	£68.20

You may also need ...

Accessories



... on pages 424 – 425, section 8

You may also need ...

Sensors and switches



... on page 426, section 8



PROFILE CYLINDERS

FEATURES

- Double acting
- For contactless position sensing
- Optional with protection against rotation
- Extensive range of accessories makes it possible to install the cylinder virtually anywhere
- PPS cushioning: pneumatic cushioning, self-adjusting at both ends
- The variants can be configured individually, thanks to the modular product system
- Excellent flexibility, thanks to the wide range of variants



DSBC TO ISO 15552
DOUBLE ACTING
32 MM BORE

3110

50 MM BORE

PART NUMBER	TYPE	STROKE (MM)	PRICE
FES2123085	DSBC-32-20-PPSA-N3	20	£101.92
FES1376467	DSBC-32-25-PPSA-N3	25	£102.19
FES2123086	DSBC-32-30-PPSA-N3	30	£102.44
FES1376468	DSBC-32-40-PPSA-N3	40	£102.97
FES1376469	DSBC-32-50-PPSA-N3	50	£103.48
FES2123087	DSBC-32-60-PPSA-N3	60	£104.00
FES2123088	DSBC-32-70-PPSA-N3	70	£104.53
FES1376470	DSBC-32-80-PPSA-N3	80	£105.04
FES1376471	DSBC-32-100-PPSA-N3	100	£106.07
FES1376472	DSBC-32-125-PPSA-N3	125	£107.37
FES2123089	DSBC-32-150-PPSA-N3	150	£108.68
FES1376473	DSBC-32-160-PPSA-N3	160	£109.19
FES1376474	DSBC-32-200-PPSA-N3	200	£111.27
FES1376475	DSBC-32-250-PPSA-N3	250	£113.89
FES2123090	DSBC-32-300-PPSA-N3	300	£116.48
FES1376476	DSBC-32-320-PPSA-N3	320	£117.51
FES1376477	DSBC-32-400-PPSA-N3	400	£121.69
FES1376478	DSBC-32-500-PPSA-N3	500	£126.87

PART NUMBER	TYPE	STROKE (MM)	PRICE
FES2102628	DSBC-50-20-PPSA-N3	20	£132.20
FES1376301	DSBC-50-25-PPSA-N3	25	£132.64
FES2102629	DSBC-50-30-PPSA-N3	30	£133.10
FES1376304	DSBC-50-40-PPSA-N3	40	£133.96
FES1376305	DSBC-50-50-PPSA-N3	50	£134.86
FES2102630	DSBC-50-60-PPSA-N3	60	£135.73
FES2102631	DSBC-50-70-PPSA-N3	70	£136.61
FES1376306	DSBC-50-80-PPSA-N3	80	£137.47
FES1376307	DSBC-50-100-PPSA-N3	100	£139.25
FES1376308	DSBC-50-125-PPSA-N3	125	£141.44
FES2102632	DSBC-50-150-PPSA-N3	150	£143.63
FES1376309	DSBC-50-160-PPSA-N3	160	£144.52
FES1376310	DSBC-50-200-PPSA-N3	200	£148.03
FES1376311	DSBC-50-250-PPSA-N3	250	£152.42
FES2102633	DSBC-50-300-PPSA-N3	300	£156.81
FES1376312	DSBC-50-320-PPSA-N3	320	£158.57
FES1376313	DSBC-50-400-PPSA-N3	400	£165.60
FES1376314	DSBC-50-500-PPSA-N3	500	£174.40

40 MM BORE

FES2123780	DSBC-40-20-PPSA-N3	20	£115.06
FES1376903	DSBC-40-25-PPSA-N3	25	£115.41
FES2123781	DSBC-40-30-PPSA-N3	30	£115.77
FES1376904	DSBC-40-40-PPSA-N3	40	£116.45
FES1376905	DSBC-40-50-PPSA-N3	50	£117.16
FES2123782	DSBC-40-60-PPSA-N3	60	£117.84
FES1376906	DSBC-40-80-PPSA-N3	80	£119.22
FES1376907	DSBC-40-100-PPSA-N3	100	£120.60
FES1376908	DSBC-40-125-PPSA-N3	125	£122.34
FES2123784	DSBC-40-150-PPSA-N3	150	£124.08
FES1376909	DSBC-40-160-PPSA-N3	160	£124.77
FES1376910	DSBC-40-200-PPSA-N3	200	£127.54
FES1376911	DSBC-40-250-PPSA-N3	250	£131.01
FES2123785	DSBC-40-300-PPSA-N3	300	£134.48
FES1376912	DSBC-40-320-PPSA-N3	320	£135.86
FES1376913	DSBC-40-400-PPSA-N3	400	£141.41
FES1376914	DSBC-40-500-PPSA-N3	500	£148.33

63 MM BORE

FES2126684	DSBC-63-20-PPSA-N3	20	£155.39
FES1383632	DSBC-63-25-PPSA-N3	25	£155.89
FES2126685	DSBC-63-30-PPSA-N3	30	£156.39
FES1383633	DSBC-63-40-PPSA-N3	40	£157.39
FES1383634	DSBC-63-50-PPSA-N3	50	£158.39
FES2126686	DSBC-63-60-PPSA-N3	60	£159.39
FES2126687	DSBC-63-70-PPSA-N3	70	£160.40
FES1383635	DSBC-63-80-PPSA-N3	80	£161.41
FES1383636	DSBC-63-100-PPSA-N3	100	£163.41
FES1383637	DSBC-63-125-PPSA-N3	125	£165.92
FES2126688	DSBC-63-150-PPSA-N3	150	£168.42
FES1383638	DSBC-63-160-PPSA-N3	160	£169.41
FES1383639	DSBC-63-200-PPSA-N3	200	£173.43
FES1383640	DSBC-63-250-PPSA-N3	250	£178.45
FES2126689	DSBC-63-300-PPSA-N3	300	£183.45
FES1383641	DSBC-63-320-PPSA-N3	320	£185.45
FES1383642	DSBC-63-400-PPSA-N3	400	£193.48
FES1383643	DSBC-63-500-PPSA-N3	500	£203.51



PROFILE CYLINDERS

FEATURES

- Double acting
- For contactless position sensing
- Optional with protection against rotation
- Extensive range of accessories makes it possible to install the cylinder virtually anywhere
- PPS cushioning: pneumatic cushioning, self-adjusting at both ends
- The variants can be configured individually, thanks to the modular product system
- Excellent flexibility, thanks to the wide range of variants



DSBC TO ISO 15552
DOUBLE ACTING
80 MM BORE

3110

125 MM BORE

PART NUMBER	TYPE	STROKE (MM)	PRICE
FES2126636	DSBC-80-20-PPSA-N3	20	£205.65
FES1383366	DSBC-80-25-PPSA-N3	25	£206.34
FES2126637	DSBC-80-30-PPSA-N3	30	£207.03
FES1383367	DSBC-80-40-PPSA-N3	40	£208.43
FES1383368	DSBC-80-50-PPSA-N3	50	£209.80
FES2126638	DSBC-80-60-PPSA-N3	60	£211.18
FES2126639	DSBC-80-70-PPSA-N3	70	£212.56
FES1383369	DSBC-80-80-PPSA-N3	80	£213.95
FES1383370	DSBC-80-100-PPSA-N3	100	£216.73
FES1383371	DSBC-80-125-PPSA-N3	125	£220.20
FES2126640	DSBC-80-150-PPSA-N3	150	£223.67
FES1383372	DSBC-80-160-PPSA-N3	160	£225.06
FES1383373	DSBC-80-200-PPSA-N3	200	£230.60
FES1383374	DSBC-80-250-PPSA-N3	250	£237.54
FES2126641	DSBC-80-300-PPSA-N3	300	£244.45
FES1383375	DSBC-80-320-PPSA-N3	320	£247.23
FES1383376	DSBC-80-400-PPSA-N3	400	£258.32
FES1383377	DSBC-80-500-PPSA-N3	500	£272.18

PART NUMBER	TYPE	STROKE (MM)	PRICE
FES1804661	DSBC-125-25-PPSA-N3	25	£424.81
FES1804662	DSBC-125-40-PPSA-N3	40	£428.07
FES1804663	DSBC-125-50-PPSA-N3	50	£430.25
FES1804664	DSBC-125-80-PPSA-N3	80	£436.79
FES1804665	DSBC-125-100-PPSA-N3	100	£441.16
FES1804666	DSBC-125-125-PPSA-N3	125	£446.59
FES1804667	DSBC-125-160-PPSA-N3	160	£454.20
FES1804668	DSBC-125-200-PPSA-N3	200	£462.93
FES1804669	DSBC-125-250-PPSA-N3	250	£473.83
FES1804671	DSBC-125-320-PPSA-N3	320	£489.07
FES1804672	DSBC-125-400-PPSA-N3	400	£506.50
FES1804673	DSBC-125-500-PPSA-N3	500	£528.28

100 MM BORE

FES1384890	DSBC-100-25-PPSA-N3	25	£275.33
FES1384891	DSBC-100-40-PPSA-N3	40	£277.77
FES1384892	DSBC-100-50-PPSA-N3	50	£279.39
FES1384893	DSBC-100-80-PPSA-N3	80	£284.25
FES1384894	DSBC-100-100-PPSA-N3	100	£287.49
FES1384895	DSBC-100-125-PPSA-N3	125	£291.55
FES1384896	DSBC-100-160-PPSA-N3	160	£297.23
FES1384897	DSBC-100-200-PPSA-N3	200	£303.71
FES1384898	DSBC-100-250-PPSA-N3	250	£311.82
FES1384899	DSBC-100-320-PPSA-N3	320	£323.17
FES1384900	DSBC-100-400-PPSA-N3	400	£336.14
FES1384901	DSBC-100-500-PPSA-N3	500	£352.35

You may also need ...

Accessories



... on pages 424 – 425, section 8

You may also need ...

Sensors and switches



... on page 426, section 8



COMPACT CYLINDERS

FEATURES

- Short-stroke cylinders for tight fitting spaces
- Application orientated housing and piston rod variants
- Air connections and profile slot for proximity sensors on one side
- Mounting hole pattern to ISO 15552 from 32 mm bore upward
- Male and female rod threads
- Elastic cushioning rings / pads at both ends
- Position sensing via proximity sensor (additional)



3110



3110

ADVC SHORT STROKE DOUBLE ACTING MALE THREAD

6 MM BORE

PART NUMBER	TYPE	STROKE (MM)	PRICE
FES188064	ADVC-6-5-A-P-A	5	£39.40
FES188065	ADVC-6-10-A-P-A	10	£39.74

10 MM BORE

FES188076	ADVC-10-5-A-P-A	5	£40.50
FES188077	ADVC-10-10-A-P-A	10	£40.90

12 MM BORE

FES188092	ADVC-12-5-A-P-A	5	£42.48
FES188093	ADVC-12-10-A-P-A	10	£42.89

16 MM BORE

FES188118	ADVC-16-5-A-P-A	5	£47.46
FES188119	ADVC-16-10-A-P-A	10	£47.99
FES188120	ADVC-16-15-A-P-A	15	£48.52
FES188121	ADVC-16-20-A-P-A	20	£49.05
FES188122	ADVC-16-25-A-P-A	25	£49.58

20 MM BORE

FES188150	ADVC-20-5-A-P-A	5	£50.07
FES188151	ADVC-20-10-A-P-A	10	£50.77
FES188152	ADVC-20-15-A-P-A	15	£51.49
FES188153	ADVC-20-20-A-P-A	20	£52.19
FES188154	ADVC-20-25-A-P-A	25	£52.91

25 MM BORE

FES188182	ADVC-25-5-A-P-A	5	£57.11
FES188183	ADVC-25-10-A-P-A	10	£58.31
FES188184	ADVC-25-15-A-P-A	15	£59.49
FES188185	ADVC-25-20-A-P-A	20	£60.67
FES188186	ADVC-25-25-A-P-A	25	£61.88

32 MM BORE

FES188214	ADVC-32-5-A-P-A	5	£63.65
FES188215	ADVC-32-10-A-P-A	10	£65.69
FES188216	ADVC-32-15-A-P-A	15	£67.71
FES188217	ADVC-32-20-A-P-A	20	£69.71
FES188218	ADVC-32-25-A-P-A	25	£71.73

40 MM BORE

FES188242	ADVC-40-5-A-P-A	5	£83.41
FES188243	ADVC-40-10-A-P-A	10	£85.70
FES188244	ADVC-40-15-A-P-A	15	£88.00
FES188245	ADVC-40-20-A-P-A	20	£90.29
FES188246	ADVC-40-25-A-P-A	25	£92.58

50 MM BORE

FES188268	ADVC-50-10-A-P-A	10	£104.51
FES188269	ADVC-50-15-A-P-A	15	£107.12
FES188270	ADVC-50-20-A-P-A	20	£109.72
FES188271	ADVC-50-25-A-P-A	25	£112.34

63 MM BORE

FES188292	ADVC-63-10-A-P-A	10	£130.84
FES188293	ADVC-63-15-A-P-A	15	£133.75
FES188294	ADVC-63-20-A-P-A	20	£136.68
FES188295	ADVC-63-25-A-P-A	25	£139.59

ADVC SHORT STROKE DOUBLE ACTING FEMALE THREAD

12 MM BORE

PART NUMBER	TYPE	STROKE (MM)	PRICE
FES188088	ADVC-12-5-I-P-A	5	£42.48
FES188089	ADVC-12-10-I-P-A	10	£42.89

16 MM BORE

FES188108	ADVC-16-5-I-P-A	5	£47.46
FES188109	ADVC-16-10-I-P-A	10	£47.99
FES188110	ADVC-16-15-I-P-A	15	£48.52
FES188111	ADVC-16-20-I-P-A	20	£49.05
FES188112	ADVC-16-25-I-P-A	25	£49.58

20 MM BORE

FES188140	ADVC-20-5-I-P-A	5	£50.07
FES188141	ADVC-20-10-I-P-A	10	£50.77
FES188142	ADVC-20-15-I-P-A	15	£51.49
FES188143	ADVC-20-20-I-P-A	20	£52.19
FES188144	ADVC-20-25-I-P-A	25	£52.91

25 MM BORE

FES188172	ADVC-25-5-I-P-A	5	£57.11
FES188173	ADVC-25-10-I-P-A	10	£58.31
FES188174	ADVC-25-15-I-P-A	15	£59.49
FES188175	ADVC-25-20-I-P-A	20	£60.67
FES188176	ADVC-25-25-I-P-A	25	£61.88

32 MM BORE

FES188204	ADVC-32-5-I-P-A	5	£63.65
FES188205	ADVC-32-10-I-P-A	10	£65.69
FES188206	ADVC-32-15-I-P-A	15	£67.71
FES188207	ADVC-32-20-I-P-A	20	£69.71
FES188208	ADVC-32-25-I-P-A	25	£71.73

40 MM BORE

FES188232	ADVC-40-5-I-P-A	5	£83.41
FES188233	ADVC-40-10-I-P-A	10	£85.70
FES188234	ADVC-40-15-I-P-A	15	£88.00
FES188235	ADVC-40-20-I-P-A	20	£90.29
FES188236	ADVC-40-25-I-P-A	25	£92.58

50 MM BORE

FES188260	ADVC-50-10-I-P-A	10	£104.51
FES188261	ADVC-50-15-I-P-A	15	£107.12
FES188262	ADVC-50-20-I-P-A	20	£109.72
FES188263	ADVC-50-25-I-P-A	25	£112.34

63 MM BORE

FES188284	ADVC-63-10-I-P-A	10	£130.84
FES188285	ADVC-63-15-I-P-A	15	£133.75
FES188286	ADVC-63-20-I-P-A	20	£136.68
FES188287	ADVC-63-25-I-P-A	25	£139.59



STANDARD COMPACT CYLINDERS – FEMALE THREAD



ADN TO ISO 21287
DOUBLE ACTING

12 BORE

3110

PART NUMBER	TYPE	SIZE (MM)	PRICE
FES536211	ADN-12-5-I-P-A	5	£40.26
FES536212	ADN-12-10-I-P-A	10	£40.58
FES536213	ADN-12-15-I-P-A	15	£40.90
FES536214	ADN-12-20-I-P-A	20	£41.22
FES536215	ADN-12-25-I-P-A	25	£41.55
FES536216	ADN-12-30-I-P-A	30	£41.88
FES536217	ADN-12-40-I-P-A	40	£42.52

16 BORE

FES536226	ADN-16-5-I-P-A	5	£41.72
FES536227	ADN-16-10-I-P-A	10	£42.09
FES536228	ADN-16-15-I-P-A	15	£42.50
FES536229	ADN-16-20-I-P-A	20	£42.89
FES536230	ADN-16-25-I-P-A	25	£43.28
FES536231	ADN-16-30-I-P-A	30	£43.68
FES536232	ADN-16-40-I-P-A	40	£44.46
FES536341	ADN-16-50-I-P-A	50	£45.24

20 BORE

FES536242	ADN-20-5-I-P-A	5	£43.14
FES536243	ADN-20-10-I-P-A	10	£43.68
FES536244	ADN-20-15-I-P-A	15	£44.24
FES536245	ADN-20-20-I-P-A	20	£44.78
FES536246	ADN-20-25-I-P-A	25	£45.31
FES536247	ADN-20-30-I-P-A	30	£45.85
FES536248	ADN-20-40-I-P-A	40	£46.96
FES536249	ADN-20-50-I-P-A	50	£48.04
FES536362	ADN-20-60-I-P-A	60	£49.14

25 BORE

FES536259	ADN-25-5-I-P-A	5	£48.45
FES536260	ADN-25-10-I-P-A	10	£49.38
FES536261	ADN-25-15-I-P-A	15	£50.29
FES536262	ADN-25-20-I-P-A	20	£51.21
FES536263	ADN-25-25-I-P-A	25	£52.13
FES536264	ADN-25-30-I-P-A	30	£53.06
FES536265	ADN-25-40-I-P-A	40	£54.89
FES536266	ADN-25-50-I-P-A	50	£56.72
FES536383	ADN-25-60-I-P-A	60	£58.56

32 BORE

FES536278	ADN-32-5-I-P-A	5	£52.89
FES536279	ADN-32-10-I-P-A	10	£54.45
FES536280	ADN-32-15-I-P-A	15	£55.98
FES536281	ADN-32-20-I-P-A	20	£57.53
FES536282	ADN-32-25-I-P-A	25	£59.08
FES536283	ADN-32-30-I-P-A	30	£60.62
FES536285	ADN-32-50-I-P-A	50	£66.80
FES536286	ADN-32-60-I-P-A	60	£69.89
FES536287	ADN-32-80-I-P-A	80	£76.08

FEATURES

- Compact cylinders with ISO standard dimensions
- Innovative technology for maximum speeds
- Flexible in use, thanks to easy to configure variants
- Types in accordance with ATEX directive for potentially explosive atmospheres
- Male and Female thread
- Pneumatic cushioning, self-adjusting at both ends
- Positioning via proximity sensor (additional)

40 BORE

PART NUMBER	TYPE	SIZE (MM)	PRICE
FES536299	ADN-40-5-I-P-A	5	£69.92
FES536300	ADN-40-10-I-P-A	10	£71.66
FES536301	ADN-40-15-I-P-A	15	£73.40
FES536302	ADN-40-20-I-P-A	20	£75.13
FES536303	ADN-40-25-I-P-A	25	£76.88
FES536304	ADN-40-30-I-P-A	30	£78.61
FES536305	ADN-40-40-I-P-A	40	£82.08
FES536306	ADN-40-50-I-P-A	50	£85.56
FES536307	ADN-40-60-I-P-A	60	£89.02

50 BORE

FES536321	ADN-50-10-I-P-A	10	£83.17
FES536322	ADN-50-15-I-P-A	15	£85.14
FES536323	ADN-50-20-I-P-A	20	£87.12
FES536324	ADN-50-25-I-P-A	25	£89.12
FES536325	ADN-50-30-I-P-A	30	£91.09
FES536326	ADN-50-40-I-P-A	40	£95.04
FES536327	ADN-50-50-I-P-A	50	£98.99
FES536328	ADN-50-60-I-P-A	60	£102.94
FES536329	ADN-50-80-I-P-A	80	£110.87

63 BORE

FES536342	ADN-63-10-I-P-A	10	£102.78
FES536343	ADN-63-15-I-P-A	15	£104.98
FES536344	ADN-63-20-I-P-A	20	£107.18
FES536345	ADN-63-25-I-P-A	25	£109.38
FES536346	ADN-63-30-I-P-A	30	£111.60
FES536347	ADN-63-40-I-P-A	40	£116.00
FES536348	ADN-63-50-I-P-A	50	£120.42
FES536349	ADN-63-60-I-P-A	60	£124.83

80 BORE

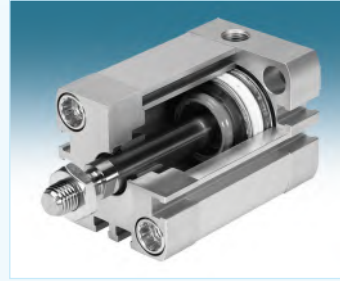
FES536363	ADN-80-10-I-P-A	10	£132.34
FES536364	ADN-80-15-I-P-A	15	£134.74
FES536365	ADN-80-20-I-P-A	20	£137.16
FES536366	ADN-80-25-I-P-A	25	£139.56
FES536367	ADN-80-30-I-P-A	30	£141.98
FES536368	ADN-80-40-I-P-A	40	£146.78
FES536369	ADN-80-50-I-P-A	50	£151.61
FES536370	ADN-80-60-I-P-A	60	£156.43
FES536371	ADN-80-80-I-P-A	80	£166.06



STANDARD COMPACT CYLINDERS – MALE THREAD

FEATURES

- Compact cylinders with ISO standard dimensions
- Innovative technology for maximum speeds
- Flexible in use, thanks to easy to configure variants
- Types in accordance with ATEX directive for potentially explosive atmospheres
- Male and Female thread
- Pneumatic cushioning, self-adjusting at both ends
- Positioning via proximity sensor (additional)



3110

ADN TO ISO 21287
DOUBLE ACTING

12 BORE

PART NUMBER	TYPE	STROKE (MM)	PRICE
FES536204	ADN-12-5-A-P-A	5	£40.26
FES536205	ADN-12-10-A-P-A	10	£40.58
FES536206	ADN-12-15-A-P-A	15	£40.90
FES536207	ADN-12-20-A-P-A	20	£41.22
FES536208	ADN-12-25-A-P-A	25	£41.55
FES536209	ADN-12-30-A-P-A	30	£41.88
FES536210	ADN-12-40-A-P-A	40	£42.52

16 BORE

FES536219	ADN-16-5-A-P-A	5	£41.72
FES536220	ADN-16-10-A-P-A	10	£42.09
FES536221	ADN-16-15-A-P-A	15	£42.50
FES536222	ADN-16-20-A-P-A	20	£42.89
FES536223	ADN-16-25-A-P-A	25	£43.28
FES536224	ADN-16-30-A-P-A	30	£43.68
FES536225	ADN-16-40-A-P-A	40	£44.46
FES536331	ADN-16-50-A-P-A	50	£45.24

20 BORE

FES536234	ADN-20-5-A-P-A	5	£43.14
FES536235	ADN-20-10-A-P-A	10	£43.68
FES536236	ADN-20-15-A-P-A	15	£44.24
FES536237	ADN-20-20-A-P-A	20	£44.78
FES536238	ADN-20-25-A-P-A	25	£45.31
FES536239	ADN-20-30-A-P-A	30	£45.85
FES536240	ADN-20-40-A-P-A	40	£46.96
FES536241	ADN-20-50-A-P-A	50	£48.04
FES536352	ADN-20-60-A-P-A	60	£49.14

25 BORE

FES536251	ADN-25-5-A-P-A	5	£48.45
FES536252	ADN-25-10-A-P-A	10	£49.38
FES536253	ADN-25-15-A-P-A	15	£50.29
FES536254	ADN-25-20-A-P-A	20	£51.21
FES536255	ADN-25-25-A-P-A	25	£52.13
FES536256	ADN-25-30-A-P-A	30	£53.06
FES536257	ADN-25-40-A-P-A	40	£54.89
FES536258	ADN-25-50-A-P-A	50	£56.72
FES536373	ADN-25-60-A-P-A	60	£58.56

32 BORE

PART NUMBER	TYPE	STROKE (MM)	PRICE
FES536269	ADN-32-10-A-P-A	10	£54.45
FES536270	ADN-32-15-A-P-A	15	£55.98
FES536271	ADN-32-20-A-P-A	20	£57.53
FES536272	ADN-32-25-A-P-A	25	£59.08
FES536273	ADN-32-30-A-P-A	30	£60.62
FES536274	ADN-32-40-A-P-A	40	£63.72
FES536275	ADN-32-50-A-P-A	50	£66.80
FES536276	ADN-32-60-A-P-A	60	£69.89
FES536277	ADN-32-80-A-P-A	80	£76.08

40 BORE

FES536290	ADN-40-10-A-P-A	10	£71.66
FES536291	ADN-40-15-A-P-A	15	£73.40
FES536292	ADN-40-20-A-P-A	20	£75.13
FES536293	ADN-40-25-A-P-A	25	£76.88
FES536294	ADN-40-30-A-P-A	30	£78.61
FES536295	ADN-40-40-A-P-A	40	£82.08
FES536296	ADN-40-50-A-P-A	50	£85.56
FES536297	ADN-40-60-A-P-A	60	£89.02
FES536298	ADN-40-80-A-P-A	80	£95.97

50 BORE

FES536311	ADN-50-10-A-P-A	10	£83.17
FES536312	ADN-50-15-A-P-A	15	£85.14
FES536313	ADN-50-20-A-P-A	20	£87.12
FES536314	ADN-50-25-A-P-A	25	£89.12
FES536315	ADN-50-30-A-P-A	30	£91.09
FES536316	ADN-50-40-A-P-A	40	£95.04
FES536317	ADN-50-50-A-P-A	50	£98.99
FES536318	ADN-50-60-A-P-A	60	£102.94
FES536319	ADN-50-80-A-P-A	80	£110.87

63 BORE

FES536332	ADN-63-10-A-P-A	10	£102.78
FES536333	ADN-63-15-A-P-A	15	£104.98
FES536334	ADN-63-20-A-P-A	20	£107.18
FES536335	ADN-63-25-A-P-A	25	£109.38
FES536336	ADN-63-30-A-P-A	30	£111.60
FES536337	ADN-63-40-A-P-A	40	£116.00
FES536338	ADN-63-50-A-P-A	50	£120.42
FES536339	ADN-63-60-A-P-A	60	£124.83
FES536340	ADN-63-80-A-P-A	80	£133.66

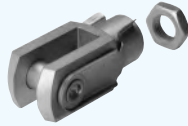
80 BORE

FES536353	ADN-80-10-A-P-A	10	£132.34
FES536354	ADN-80-15-A-P-A	15	£134.74
FES536355	ADN-80-20-A-P-A	20	£137.16
FES536356	ADN-80-25-A-P-A	25	£139.56
FES536357	ADN-80-30-A-P-A	30	£141.98
FES536358	ADN-80-40-A-P-A	40	£146.78
FES536359	ADN-80-50-A-P-A	50	£151.61
FES536360	ADN-80-60-A-P-A	60	£156.43
FES536361	ADN-80-80-A-P-A	80	£166.06



DSBC / ADVC AND DSNU ACCESSORIES

Eight



ROD CLEVIS SG

3110

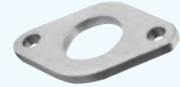
PART NUMBER	TYPE	BORE SIZE (MM) FOR DSBC	BORE SIZE (MM) FOR ADVC	PRICE
FES6532	SG-M4	-	10	£3.03
FES3110	SG-M6	-	16	£3.03
FES3111	SG-M8	-	20, 25	£3.32
FES6144	SG-M10x1,25	32	32	£5.03
FES6145	SG-M12x1,25	40	40, 50, 63	£7.11
FES6146	SG-M16x1,5	50, 63	-	£12.52
FES6147	SG-M20x1,5	80, 100	-	£33.53
FES14987	SG-M27x2-B			£81.27
FES9581	SG-M36x2			£139.74
FES9582	SG-M42x2			£329.29
FES9583	SG-M48x2			£621.70



FOOT MOUNTING HBN

3110

PART NUMBER	TYPE	FOR BORE (MM)	PRICE
FES5124	HBN-8/10X2	8, 10	£3.85
FES5126	HBN-12/16X2	12, 16	£4.74
FES5128	HBN-20/25X2	20, 25	£6.34



FLANGE MOUNTING FBN

3110

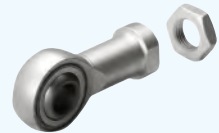
PART NUMBER	TYPE	FOR BORE (MM)	PRICE
FES5129	FBN-8/10	8, 10	£1.91
FES5130	FBN-12/16	12, 16	£1.98
FES5131	FBN-20/25	20, 25	£2.09



SELF-ALIGNING ROD COUPLER FK

3110

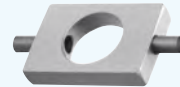
PART NUMBER	TYPE	PRICE
FES6528	FK-M4	£16.29
FES30984	FK-M5	£16.29
FES2061	FK-M6	£16.44
FES2062	FK-M8	£19.41
FES2063	FK-M10	£26.00
FES6140	FK-M10x1,25	£26.00
FES2064	FK-M12	£26.27
FES6141	FK-M12x1,25	£26.27
FES2065	FK-M16	£61.97
FES6142	FK-M16x1,5	£61.97
FES6143	FK-M20x1,5	£67.92
FES10746	FK-M36x2	£321.27



ROD EYE SGS

3110

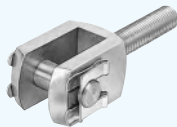
PART NUMBER	TYPE	PRICE
FES9253	SGS-M4	£11.33
FES9254	SGS-M6	£12.20
FES9255	SGS-M8	£13.36
FES9261	SGS-M10x1,25	£19.52
FES9262	SGS-M12x1,25	£24.62
FES9258	SGS-M16	£38.83
FES9263	SGS-M16X1,5	£38.83
FES9264	SGS-M20X1,5	£48.27



SWIVEL MOUNTING WBN

3110

PART NUMBER	TYPE	FOR BORE (MM)	PRICE
FES8608	WBN-8/10	8, 10	£15.34
FES8609	WBN-12/16	12, 16	£15.73
FES8610	WBN-20/25	20, 25	£16.09



ROD CLEVIS SGA

3110

PART NUMBER	TYPE	FOR BORE (MM)	PRICE
FES32954	SGA-M10X1.25	32, 40	£64.70
FES10767	SGA-M12X1.25	50, 63	£78.27
FES10768	SGA-M16X1.5	80, 100	£85.78



SWIVEL MOUNTING SBN

3110

PART NUMBER	TYPE	FOR BORE (MM)	PRICE
FES539927	SBN-20/25	20, 25	£14.71



CLEVIS FOOT LBN

3110

PART NUMBER	TYPE	FOR BORE (MM)	PRICE
FES6057	LBN-8/10	8, 10	£6.34
FES6058	LBN-12/16	12, 16	£7.11
FES6059	LBN-20/25	20, 25	£7.85
FES195860	LBN-32	32	£11.46
FES195861	LBN-40	40	£14.71
FES195862	LBN-50/63	50, 63	£19.27



FOOT MOUNTING HNC

3110

PART NUMBER	TYPE	FOR BORE (MM)	PRICE
FES174369	HNC-32	32	£12.23
FES174370	HNC-40	40	£13.08
FES174371	HNC-50	50	£15.34
FES174372	HNC-63	63	£17.49
FES174373	HNC-80	80	£25.35
FES174374	HNC-100	100	£30.31



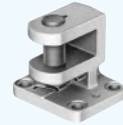
DSBC / ADN / ADVC-32+ ACCESSORIES



FLANGE MOUNTING FNC

PART NUMBER	TYPE	FOR BORE (MM)	PRICE
FES174376	FNC-32	32	£17.88
FES174377	FNC-40	40	£18.63
FES174378	FNC-50	50	£22.30
FES174379	FNC-63	63	£28.91
FES174380	FNC-80	80	£33.21
FES174381	FNC-100	100	£43.35
FES174382	FNC-125	125	£71.10

RIGHT ANGLE
CLEVIS FOOT LQG



PART NUMBER	TYPE	FOR BORE (MM)	PRICE
FES31768	LQG-32	32	£74.42
FES31769	LQG-40	40	£78.15
FES31770	LQG-50	50	£101.72
FES31771	LQG-63	63	£104.51
FES31772	LQG-80	80	£116.23
FES31773	LQG-100	100	£128.89



SWIVEL FLANGE SNCB

PART NUMBER	TYPE	FOR BORE (MM)	PRICE
FES174390	SNCB-32	32	£18.24
FES174391	SNCB-40	40	£19.16
FES174392	SNCB-50	50	£24.20
FES174393	SNCB-63	63	£29.92
FES174394	SNCB-80	80	£38.42
FES174395	SNCB-100	100	£54.50
FES174396	SNCB-125	125	£97.22



SWIVEL FLANGE SNCL

PART NUMBER	TYPE	FOR BORE (MM)	PRICE
FES174404	SNCL-32	32	£18.24
FES174405	SNCL-40	40	£19.16
FES174406	SNCL-50	50	£24.20
FES174407	SNCL-63	63	£29.92
FES174408	SNCL-80	80	£38.42
FES174409	SNCL-100	100	£54.50
FES174410	SNCL-125	125	£97.22



FOOT MOUNTING HNA

PART NUMBER	TYPE	FOR BORE (MM)	PRICE
FES537237	HNA-12	12	£5.31
FES537238	HNA-16	16	£5.59
FES537239	HNA-20	20	£6.21
FES537240	HNA-25	25	£6.26
FES537241	HNA-32	32	£10.27
FES537242	HNA-40	40	£12.16
FES537243	HNA-50	50	£13.08
FES537244	HNA-63	63	£15.73
FES537249	HNA-80	80	£24.20
FES537250	HNA-100	100	£29.16



MULTI-POSITION KIT DPNC

PART NUMBER	TYPE	FOR BORE (MM)	PRICE
FES174422	DPNC-80	80	£69.48
FES174423	DPNC-100	100	£82.13



MULTI-POSITION KIT DPNA

PART NUMBER	TYPE	FOR BORE (MM)	PRICE
FES537263	DPNA-12	12	£24.59
FES537264	DPNA-16	16	£24.83
FES537265	DPNA-20	20	£25.86
FES537266	DPNA-25	25	£29.27
FES537267	DPNA-32	32	£32.19
FES537268	DPNA-40	40	£36.52
FES537269	DPNA-50	50	£40.95
FES537270	DPNA-63	63	£47.15
FES537271	DPNA-80	80	£60.85
FES537272	DPNA-100	100	£67.43



CLEVIS FOOT MOUNTING LNG

PART NUMBER	TYPE	FOR BORE (MM)	PRICE
FES33890	LNG-32	32	£20.51
FES33891	LNG-40	40	£23.68
FES33892	LNG-50	50	£27.42
FES33893	LNG-63	63	£29.05
FES33894	LNG-80	80	£40.72
FES33895	LNG-100	100	£48.46
FES33896	LNG-125	125	£75.09


PROXIMITY SENSORS
FEATURES

- Switching output via reed contact or non-contacting
- Insertable in the slot from above, does not protrude over the cylinder profile
- Suitable for use with energy chains
- Cable clip and inscription labels included in the scope of delivery
- With switching status display
- Types in accordance with ATEX directive for potentially explosive atmospheres

FEATURES

- Magneto-resistive
- Ex2 II 3GD in accordance with EU Directive 94/9/EC


PROXIMITY SENSOR
SMT-8

3110

PART NUMBER	TYPE	CABLE LENGTH	PRICE
FES574334	SMT-8M-A-PS-24-E-0,3-M8D	0.3	£28.32
FES574337	SMT-8M-A-PS-24V-E-0,3-M12	0.3	£29.34
FES574335	SMT-8M-A-PS-24V-E-2,5-OE	2.5	£27.30
FES574336	SMT-8M-A-PS-24V-E-5,0-OE	5.0	£29.85
FES574342*	SMT-8M-A-PS-24V-E-0,3-M8D-Ex2	0.3	£29.34
FES574340	SMT-8M-A-PO-24V-E-7,5-OE	7.5	£34.41
FES574338	SMT-8M-A-NS-24V-E-2,5-OE	2.5	£29.34
FES574339	SMT-8M-A-NS-24V-E-0,3-M8D	0.3	£30.36
FES574341*	SMT-8M-A-ZS-24V-E-5,0-OE-Ex2	5.0	£30.86

SMT-10

FES551379	SMT-10M-NS-24V-E-0,3-L-M8D	0.3	£38.62
FES551377	SMT-10M-NS-24V-E-2,5-L-OE	2.5	£37.63
FES551375	SMT-10M-PS-24V-E-0,3-L-M8D	0.3	£36.65
FES551373	SMT-10M-PS-24V-E-2,5-L-OE	2.5	£35.64
FES551382	SMT-10M-ZS-24V-E-2,5-L-OE	2.5	£35.64

SPECIFICATIONS

Design	8M	For T-slot, insertable in the slot from above
	DS	N/O contact, 3-wire
	ZS	N/O contact, 2-wire
	DO	N/C contact, 3-wire
	PS	PNP, N/O contact, 3-wire
Switching output, switching element function	NS	NPN, N/O contact, 3-wire
	PO	PNP, N/C contact, 3-wire
	Rated operating voltage	
	24 V DC	
Cable characteristics	K	Standard + energy chain
	E	Energy chain + robot
	OE	Open end
Connection technology	M8	Cable with plug M8x1, snap-on flange
	M8D	Cable with plug M8x1, rotatable thread
	M12	Cable with plug M12x1, rotatable thread



* FES574342 and FES574341 are ATEX approved

PROXIMITY SENSOR ACCESSORIES FOR DSNU CYLINDERS

SMBR
MOUNTING KIT


3110

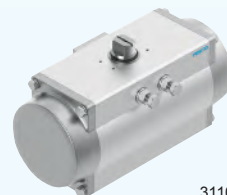
PART NUMBER	TYPE	FOR BORE	PRICE
FES175091	SMBR-8-8	8	£4.65
FES175092	SMBR-8-10	10	£4.65
FES175093	SMBR-8-12	12	£4.65
FES175094	SMBR-8-16	16	£4.65
FES175095	SMBR-8-20	20	£4.65
FES175096	SMBR-8-25	25	£4.65


REED SWITCHES

3110

PART NUMBER	TYPE	CABLE LENGTH	PRICE
FES546799	SME-8M-DO-24V-K-7,5-OE	7.5	£35.43
FES543861	SME-8M-DS-24V-K-0,3-M8D	0.3	£26.91
FES543862	SME-8M-DS-24V-K-2,5-OE	2.5	£25.51
FES543863	SME-8M-DS-24V-K-5,0-OE	5.0	£29.03
FES543872	SME-8M-ZS-24V-K-2,5-OE	2.5	£25.51




DFPD QUARTER TURN ACTUATORS


3110


**DFPD
QUARTER TURN ACTUATORS**

PART NUMBER	TYPE	BORE (MM)	PRICE
FES8048142	DFPD-480-RP-90-RS60-F1012	480	£582.71
FES8048127	DFPD-480-RP-90-RD-F1012	480	£495.97
FES8048140	DFPD-300-RP-90-RS60-F0710	300	£351.51
FES8048126	DFPD-300-RP-90-RD-F0710	300	£327.47
FES8048138	DFPD-240-RP-90-RS60-F0710	240	£309.17
FES8048125	DFPD-240-RP-90-RD-F0710	240	£283.05
FES8048136	DFPD-160-RP-90-RS60-F0710	160	£253.55
FES8048124	DFPD-160-RP-90-RD-F0710	160	£233.17
FES8048134	DFPD-120-RP-90-RS60-F0507	120	£221.75
FES8048123	DFPD-120-RP-90-RD-F0507	120	£204.43
FES8047626	DFPD-80-RP-90-RS60-F0507	80	£177.01
FES8047616	DFPD-80-RP-90-RD-F0507	80	£149.11
FES8047624	DFPD-40-RP-90-RS60-F0507	40	£132.52
FES8047615	DFPD-40-RP-90-RD-F0507	40	£108.46
FES8047622	DFPD-20-RP-90-RS60-F04	20	£106.33
FES8047614	DFPD-20-RP-90-RD-F04	20	£86.76
FES8047613	DFPD-10-RP-90-RD-F03	10	£70.66

FEATURES

- Uniform torque characteristics across the entire rotation angle of 90° with the double acting version
- Version with swivel angle 120°, 135°, 180° for the sizes 40, 120, 240, 480, double acting
- Process valve connector according to ISO 5211

SPECIFICATIONS

Temperature range	-20°C to +80°C
Operating pressure	2 bar to 8 bar (29 psi to 116 psi)

Eight

ACCESSORIES

FEATURES

The DFPD series features a gear rack and pinion combination with a constant torque characteristic across the entire swivel range. It is available in sizes 10 to 2300. The DFPD is suitable for the automation of butterfly valves, ball valves and air dampers.

FEATURES

It is also suitable for water/waste water, beverage, pharmaceutical and process automation. The modular and compact design of the DFPD offers various spring configurations as a suitable solution for different applications.

MATERIALS

Connecting plate	Anodised wrought aluminium alloy
Piston / piston rod	Die-cast aluminium
Seals	NBR
Bearing	POM
Cam	Stainless steel casting (DFPD-10, 20, 40, 80, 120, 160-90). Steel (DFPD-240, 300, 480, 700, 900, 1200, 2300-90)
Screws	High-alloy stainless steel

NOTE: Materials are RoHS compliant



3110

POSITIONER

PART NUMBER	TYPE	PRICE
FES3929539	CMSX-P-SE-C-U-F1-D-130-A	£626.41
FES3929370	CMSX-P-S-C-U-F1-S-50-A	£446.14
FES3929313	CMSX-P-S-C-U-F1-D-50-A	£549.71



3110

LIMIT SWITCH BOX

PART NUMBER	TYPE	PRICE
FES3482807	SRBC-CA3-YR90-N-20N-ZC-C2P20	£153.25
FES3482808	SRBC-CA3-YR90-N-1-P-C2P20	£147.55
FES3482805	SRBC-CA3-YR90-MW-22A-1W-C2P20	£56.53


VUVG SERIES

**VUVG SERIES
IN-LINE VALVE / INDIVIDUAL VALVE
10 MM WIDTH**

3110

PART NUMBER	TYPE	THREAD	PRICE
FES8042540	VUVG-LK10-B52-T-M5-1H2L-S	M5	£60.25
FES8042544	VUVG-LK10-B52-T-M5-1R8L-S	M5	£70.28
FES8042548	VUVG-LK10-B52-T-M7-1H2L-S	M7	£62.99
FES8042552	VUVG-LK10-B52-T-M7-1R8L-S	M7	£73.03
FES8042539	VUVG-LK10-M52-AT-M5-1H2L-S	M5	£43.83
FES8042543	VUVG-LK10-M52-AT-M5-1R8L-S	M5	£48.84
FES8042547	VUVG-LK10-M52-AT-M7-1H2L-S	M7	£46.56
FES8042551	VUVG-LK10-M52-AT-M7-1R8L-S	M7	£51.57
FES8042538	VUVG-LK10-T32C-AT-M5-1H2L-S	M5	£63.91
FES8042546	VUVG-LK10-T32C-AT-M7-1H2L-S	M7	£66.65
FES8042550	VUVG-LK10-T32C-AT-M7-1R8L-S	M7	£76.68

14 MM WIDTH

FES8042564	VUVG-LK14-B52-T-G18-1H2L-S	G1/8	£65.73
FES8042568	VUVG-LK14-B52-T-G18-1R8L-S	G1/8	£75.76
FES8042563	VUVG-LK14-M52-AT-G18-1H2L-S	G1/8	£49.30
FES8042567	VUVG-LK14-M52-AT-G18-1R8L-S	G1/8	£54.32
FES8042562	VUVG-LK14-T32C-AT-G18-1H2L-S	G1/8	£69.38
FES8042566	VUVG-LK14-T32C-AT-G18-1R8L-S	G1/8	£79.41

18 MM WIDTH

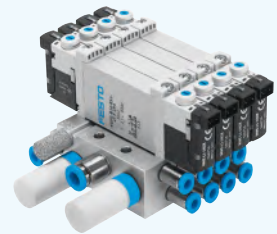
FES8031532	VUVG-L18-M52-MT-G14-1R8L	G1/4	£80.66
FES8031531	VUVG-L18-M52-RT-G14-1R8L	G1/4	£77.56
FES8031534	VUVG-L18-P53C-T-G14-1R8L	G1/4	£121.61

FEATURES

- Universal valve
- Basic valve and E-box combinations
- Width 10 mm and 14 mm
- Internal pilot air supply with VUVG-L
- Can be mounted as individual valve or sub-base valve on sturdy aluminium manifold rail
- Operating voltage 24 V DC without E-box

SPECIFICATIONS

Valve function	T32C	2x3/2-way valve, normally closed
	T32U	2x3/2-way valve, normally open
	M52	5/2-way valve, single solenoid
	B52	5/2-way valve, double solenoid
	P53C	5/3-way valve, mid-position closed
Reset method	P53E	5/3-way valve, mid-position exhausted
	AT	Pneumatic spring/internal/non-detenting, detenting
	RT	Pneumatic-mechanical spring/internal/non-detenting, detenting
	ZT	Without/external/non-detenting, detenting
	T	Without/internal/non-detenting, detenting
	AZT	Pneumatic spring/external/non-detenting, detenting
	RZT	Pneumatic-mechanical spring/external/non-detenting, detenting


**VUVG SERIES
SUB-BASE VALVE
10 MM WIDTH**

3110

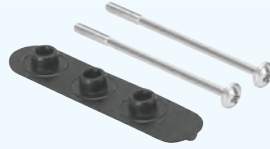
PART NUMBER	TYPE	PRICE
FES566487	VUVG-B10-T32C-AZT-F-1P3	£72.60
FES566488	VUVG-B10-T32U-AZT-F-1P3	£72.60
FES566490	VUVG-B10-M52-RZT-F-1P3	£50.87
FES566491	VUVG-B10-B52-ZT-F-1P3	£67.64
FES566492	VUVG-B10-P53C-ZT-F-1P3	£82.52
FES566493	VUVG-B10-P53E-ZT-F-1P3	£82.52
FES8042556	VUVG-BK10-B52-T-F-1H2L-S	£57.97
FES8042560	VUVG-BK10-B52-T-F-1R8L-S	£68.01
FES8042555	VUVG-BK10-M52-AT-F-1H2L-S	£41.53
FES8042554	VUVG-BK10-T32C-AT-F-1H2L-S	£61.62
FES8042558	VUVG-BK10-T32C-AT-F-1R8L-S	£71.66

14 MM WIDTH

FES566513	VUVG-B14-T32C-AZT-F-1P3	£80.05
FES566514	VUVG-B14-T32U-AZT-F-1P3	£80.05
FES566516	VUVG-B14-M52-AZT-F-1P3	£58.32
FES566517	VUVG-B14-B52-ZT-F-1P3	£75.08
FES566518	VUVG-B14-P53C-ZT-F-1P3	£89.97
FES566519	VUVG-B14-P53E-ZT-F-1P3	£89.97
FES8042572	VUVG-BK14-B52-T-F-1H2L-S	£63.45
FES8042576	VUVGG-BK14-B52-T-F-1R8L-S	£73.48
FES8042571	VUVG-BK14-M52-AT-F-1H2L-S	£47.01
FES8042575	VUVG-BK14-M52-AT-F-1R8L-S	£52.03
FES8042570	VUVG-BK14-T32C-AT-F-1H2L-S	£67.11
FES8042574	VUVG-BK14-T32C-AT-F-1R8L-S	£77.14



VUVG SERIES



SEAL VABD-L1-10X
10 MM SIZE

3110

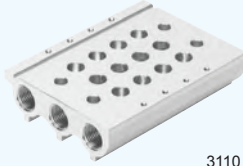
PART NUMBER	TYPE	THREAD	PRICE
FES566672	VABD-L1-10X-S-M5	M5	£1.61
FES566673	VABD-L1-10X-S-M7	M7	£1.61

14 MM SIZE

FES566675	VABD-L1-14X-S-G18	G1/8	£1.61
-----------	-------------------	------	-------

MANIFOLD RAIL VABM FOR INDIVIDUAL VALVE VUVG-L WITH SEAL VABM-L1-10X

10 MM SIZE



3110

PART NUMBER	TYPE	THREAD	VALVE POS.	PRICE
FES566558	VABM-L1-10S-G18-2	G1/8	2	£37.22
FES566559	VABM-L1-10S-G18-3	G1/8	3	£43.44
FES566560	VABM-L1-10S-G18-4	G1/8	4	£49.64
FES566562	VABM-L1-10S-G18-6	G1/8	6	£62.04
FES566564	VABM-L1-10S-G18-8	G1/8	8	£74.45
FES566566	VABM-L1-10S-G18-10	G1/8	10	£86.86
FES576363	VABM-B10-20-G38-2-P53	G3/8	2	£26.07
FES576365	VABM-B10-20-G38-4-P53	G3/8	4	£37.69
FES576367	VABM-B10-20-G38-6-P53	G3/8	6	£49.31
FES576369	VABM-B10-20-G38-8-P53	G3/8	8	£60.91
FES576371	VABM-B10-20-G38-10-P53	G3/8	10	£72.54
FES8026261	VABM-B10-25S-G38-2	G3/8	2	£50.28
FES8026263	VABM-B10-25S-G38-4	G3/8	4	£71.22
FES8026265	VABM-B10-25S-G38-6	G3/8	6	£92.15
FES8026267	VABM-B10-25S-G38-8	G3/8	8	£113.08
FES8026269	VABM-B10-25S-G38-10	G3/8	10	£134.01

14 MM SIZE

FES566618	VABM-L1-14S-G14-2	G1/4	2	£47.16
FES566619	VABM-L1-14S-G14-3	G1/4	3	£55.23
FES566620	VABM-L1-14S-G14-4	G1/4	4	£63.30
FES566622	VABM-L1-14S-G14-6	G1/4	6	£79.44
FES566624	VABM-L1-14S-G14-8	G1/4	8	£95.58
FES566626	VABM-L1-14S-G14-10	G1/4	10	£111.74

MANIFOLD RAIL VABM FOR SUB-BASE VALVE VUVG-B
10 MM SIZE



3110

PART NUMBER	TYPE	THREAD	VALVE POS.	PRICE
FES566582	VABM-L1-10W-G18-2	M5	2	£44.67
FES566583	VABM-L1-10W-G18-3	M5	3	£51.50
FES566584	VABM-L1-10W-G18-4	M5	4	£58.33
FES566586	VABM-L1-10W-G18-6	M5	6	£72.01
FES566588	VABM-L1-10W-G18-8	M5	8	£85.66
FES566590	VABM-L1-10W-G18-10	M5	10	£99.32
FES566606	VABM-L1-10HW-G18-2	M7	2	£44.67
FES566607	VABM-L1-10HW-G18-3	M7	3	£51.50
FES566608	VABM-L1-10HW-G18-4	M7	4	£58.33
FES566610	VABM-L1-10HW-G18-6	M7	6	£72.01
FES566612	VABM-L1-10HW-G18-8	M7	8	£85.66
FES566614	VABM-L1-10HW-G18-10	M7	10	£99.32
FES576417	VABM-B10-20S-G14-2	G1/4	2	£42.66
FES576419	VABM-B10-20S-G14-4	G1/4	4	£58.14
FES576421	VABM-B10-20S-G14-6	G1/4	6	£73.62
FES576423	VABM-B10-20S-G14-8	G1/4	8	£89.08
FES576425	VABM-B10-20S-G14-10	G1/4	10	£104.55
FES8026219	VABM-B10-25-G12-2-P53	G1/2	2	£33.14
FES8026221	VABM-B10-25-G12-4-P53	G1/2	4	£48.12
FES8026223	VABM-B10-25-G12-6-P53	G1/2	6	£63.10
FES8026225	VABM-B10-25-G12-8-P53	G1/2	8	£78.10
FES8026227	VABM-B10-25-G12-10-P53	G1/2	10	£93.07
FES8026379	VABM-B10-30S-G12-4	G1/2	4	£136.42
FES8026381	VABM-B10-30S-G12-6	G1/2	6	£184.91
FES8026383	VABM-B10-30S-G12-8	G1/2	8	£233.40
FES8026385	VABM-B10-30S-G12-10	G1/2	10	£281.89

14 MM SIZE

FES566642	VABM-L1-14W-G14-2	G1/8	2	£54.60
FES566643	VABM-L1-14W-G14-3	G1/8	3	£63.29
FES566644	VABM-L1-14W-G14-4	G1/8	4	£71.97
FES566646	VABM-L1-14W-G14-6	G1/8	6	£89.36
FES566648	VABM-L1-14W-G14-8	G1/8	8	£106.73
FES566650	VABM-L1-14W-G14-10	G1/8	10	£124.09


VUVG SERIES

SEPARATOR VABD-B

3110

PART NUMBER	TYPE	SIZE	FOR USE WITH	PRICE
FES569995	VABD-8-B	10	INDIVIDUAL VALVE VUVG-L	£19.85
FES569996	VABD-10-B	14	INDIVIDUAL VALVE VUVG-L	£21.10
FES569994	VABD-6-B	10	SUB-BASE VALVE VUVG-B	£18.62
FES569996	VABD-10-B	14	SUB-BASE VALVE VUVG-B	£21.10

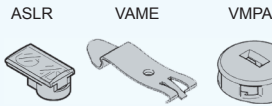
FEATURES

- LED
- Protective circuit


VAVE SERIES E-BOXES FLYING LEADS

3110

PART NUMBER	TYPE	LENGTH	VOLTAGE	PRICE
FES566722	VAVE-L1-1VL1-LP	0.5 m	24 & 12 V DC	£6.83
FES566723	VAVE-L1-1VL2-LP	1.0 m	24 & 12 V DC	£7.57
FES566724	VAVE-L1-1VL3-LP	2.5 m	24 & 12 V DC	£9.80


COVER VMPA / INSCRIPTION LABEL ASLR / H-RAIL MOUNTING VAME

3110

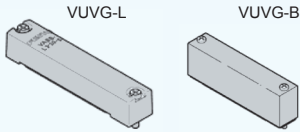
PART NUMBER	TYPE	SIZE	PIECES	PRICE
FES540897	VMPA-HBT-B	10, 14	10	£0.54
FES570818	ASLR-D-L1	10, 14	10	£1.25
FES569998	VAME-T-M4	10, 14	2	£6.21

VERTICAL PLUG

FES566715	VAVE-L1-1VH3-LP	-	24 & 12 V DC	£5.60
-----------	-----------------	---	--------------	-------

HORIZONTAL PLUG

FES566714	VAVE-L1-1VH2-LP	-	24 & 12 V DC	£5.60
-----------	-----------------	---	--------------	-------

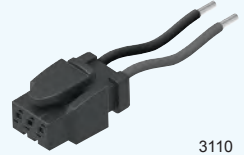

COVER PLATE VABB

3110

PART NUMBER	TYPE	SIZE	FOR USE WITH	PRICE
FES566462	VABB-L1-10-S	10	INDIVIDUAL VALVE VUVG-L	£4.97
FES569989	VABB-L1-14	14	INDIVIDUAL VALVE VUVG-L	£6.21
FES566495	VABB-L1-10-W	10	SUB-BASE VALVE VUVG-B	£4.97
FES569989	VABB-L1-14	14	SUB-BASE VALVE VUVG-B	£6.21

NEBV SERIES PLUG SOCKET WITH CABLE
2-PIN STRAIGHT SOCKET – FLYING LEADS, OPEN END

3110



PART NUMBER	TYPE	CABLE LENGTH	PRICE
FES566654	NEBV-H1G2-KN-0.5-N-LE2	0.5 m	£1.48
FES566655	NEBV-H1G2-KN-1-N-LE2	1.0 m	£2.24
FES566656	NEBV-H1G2-KN-2.5-N-LE2	2.5 m	£4.47

NEBV SERIES PLUG SOCKET WITH CABLE
2-PIN STRAIGHT SOCKET – INDIVIDUAL CABLE, OPEN END

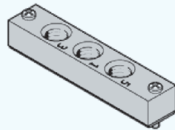
3110



PART NUMBER	TYPE	CABLE LENGTH	PRICE
FES566658	NEBV-H1G2-P-0.5-N-LE2	0.5 m	£6.69
FES566659	NEBV-H1G2-P-1-N-LE2	1.0 m	£7.69
FES566660	NEBV-H1G2-P-2.5-N-LE2	2.5 m	£10.68

VABF SERIES SUPPLY PLATE FOR USE WITH INDIVIDUAL VALVE VUVG-L

3110



PART NUMBER	TYPE	SIZE	THREAD	PRICE
FES569991	VABF-L1-10-P3A4-M5	10	M5	£9.94
FES569992	VABF-L1-10-P3A4-M7	10	M7	£9.94
FES569993	VABF-L1-14-P3A4-G18	14	G1/8	£12.40



VUVS SERIES

FEATURES

- A reliable, heavy duty valve with a long service life
- Low-cost universal valve with no performance limits
- Wide range of valve functions
- Durable, thanks to tried and tested piston spools

SPECIFICATIONS

Width	20 mm
Connection	G1/8
Spring	Mechanical
Armature tube	8 mm, short



3110

VALVE FUNCTION

M32C	3/2-way closed, single solenoid
M32U	3/2-way open, single solenoid
M52	5/2-way, single solenoid
B52	5/2-way, double solenoid
P53C	5/3-way mid closed, double solenoid
P53E	5/3-way mid exhaust, double solenoid
P53U	5/3-way mid press, double solenoid



3110

SOLENOID VALVES

PART NUMBER	TYPE	PRICE
FES8043215	VUVS-LK20-B52-D-G18-1C1-S	£67.29
FES8043213	VUVS-LK20-M32C-AD-G18-1C1-S	£45.43
FES8043214	VUVS-LK20-M52-AD-G18-1C1-S	£51.23

SOLENOID VALVES

PART NUMBER	TYPE	PRICE
FES8043219	VUVS-LK25-B52-D-G14-1B2-S	£74.73
FES8043217	VUVS-LK25-M32C-AD-G14-1B2-S	£50.43
FES8043218	VUVS-LK25-M52-AD-G14-1B2-S	£56.89



3110



3110

SOLENOID VALVES

PART NUMBER	TYPE	PRICE
FES575628	VUVS-L30-P53U-MZD-G38-F8-1B2	£123.80
FES575626	VUVS-L30-P53U-MZD-G38-F8-1C1	£123.80

SOLENOID VALVES

PART NUMBER	TYPE	PRICE
FES8049882	VUVS-LK30-B52-D-G38-1B2-S	£82.16
FES8049880	VUVS-LK30-M32C-AD-G38-1B2-S	£55.45
FES8049881	VUVS-LK30-M52-AD-G38-1B2-S	£62.56



3110

SOLENOID VALVES INTERNAL PILOT AIR SUPPLY

PART NUMBER	TYPE	PRICE
FES575260	VUVS-L20-M32C-MD-G18-F7	£53.75
FES575262	VUVS-L20-M32U-MD-G18-F7	£53.75
FES575250	VUVS-L20-M52-MD-G18-F7	£61.65
FES575251	VUVS-L20-B52-D-G18-F7	£75.51
FES575254	VUVS-L20-P53C-MD-G18-F7	£85.41
FES575252	VUVS-L20-P53E-MD-G18-F7	£85.41
FES575253	VUVS-L20-P53U-MD-G18-F7	£85.41

VUVS SERIES WITH 24 V COIL TO PATTERN TYPE C, EN175301 INTERNAL PILOT AIR SUPPLY

PART NUMBER	TYPE	PRICE
FES575274	VUVS-L20-M32C-MD-G18-F7-1C1	£61.74
FES575276	VUVS-L20-M32U-MD-G18-F7-1C1	£61.74
FES575264	VUVS-L20-M52-MD-G18-F7-1C1	£69.64
FES575265	VUVS-L20-B52-D-G18-F7-1C1	£91.47
FES575268	VUVS-L20-P53C-MD-G18-F7-1C1	£101.38
FES575266	VUVS-L20-P53E-MZD-G18-F7-1C1	£101.38
FES575267	VUVS-L20-P53U-MD-G18-F7-1C1	£101.38



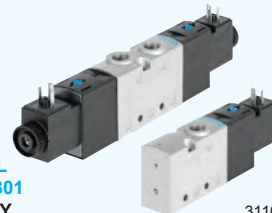
3110

SOLENOID VALVES EXTERNAL PILOT AIR SUPPLY

PART NUMBER	TYPE	PRICE
FES575259	VUVS-L20-M32C-MZD-G18-F7	£53.75
FES575261	VUVS-L20-M32U-MZD-G18-F7	£53.75
FES575679	VUVS-L20-M52-MZD-G18-F7	£61.65
FES575682	VUVS-L20-B52-ZD-G18-F7	£75.51
FES575685	VUVS-L20-P53C-MZD-G18-F7	£85.41
FES575691	VUVS-L20-P53E-MZD-G18-F7	£85.41
FES575688	VUVS-L20-P53U-MZD-G18-F7	£85.41

VUVS SERIES WITH 24 V COIL TO PATTERN TYPE C, EN175301 EXTERNAL PILOT AIR SUPPLY

PART NUMBER	TYPE	PRICE
FES575273	VUVS-L20-M32C-MZD-G18-F7-1C1	£61.74
FES575275	VUVS-L20-M32U-MZD-G18-F7-1C1	£61.74
FES575680	VUVS-L20-M52-MZD-G18-F7-1C1	£69.64
FES575683	VUVS-L20-B52-ZD-G18-F7-1C1	£91.47
FES575686	VUVS-L20-P53C-MZD-G18-F7-1C1	£101.38
FES575692	VUVS-L20-P53E-MZD-G18-F7-1C1	£101.38
FES575689	VUVS-L20-M53U-MZD-G18-F7-1C1	£101.38

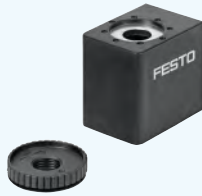


3110



UVVS SERIES

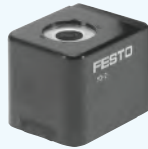
**SOLENOID COIL VACS
CONNECTION PATTERN TYPE C
FOR UVVS VALVES**



3110

PART NUMBER	TYPE	VOLTAGE	PRICE
FES8025330	VACS-C-C1-1	24 V DC	£7.99
FES8025335	VACS-C-C1-1A	24 V AC / 50-60 Hz	£7.99
FES8025337	VACS-C-C1-7A	48 V AC	£7.99
FES8025334	VACS-C-C1-16B	110/120 V AC/50-60 Hz	£7.99
FES8025338	VACS-C-C1-3W	230/240 V AC/50-60 Hz	£7.99

**SOLENOID COIL
FOR COIL CONNECTION PATTERN
TYPE A
SUITABLE FOR VZWM-L**



3110

PART NUMBER	TYPE	VOLTAGE	TO FIT ARMATURE TUBE	PRICE
FES549903	MD-2-24VDC-PA	24 V DC	F4	£18.45
FES549904	MD-2-110VAC-PA	110 V AC	F4	£18.45
FES549905	MD-2-230VAC-PA	230 V AC	F4	£18.45
FES549906	MH-2-24VDC-PA	24 V DC	F5	£22.81
FES549907	MH-2-110VAC-PA	110 V AC	F5	£22.81
FES549908	MH-2-230VAC-PA	230 V AC	F5	£22.81

FEATURES

- For solenoid coils and valves, port pattern per DIN EN175 301, type C

**PLUG SOCKET MSSD
FOR COIL CONNECTION PATTERN
TYPE C**



3110

PART NUMBER	TYPE	CABLE CONNECTOR	PRICE
FES151687	MSSD-EB	Screw terminal	£2.14

FEATURES

- For solenoid coils and valves, standard industry port pattern

**PLUG SOCKET MSSD
TYPE B**



3110

PART NUMBER	TYPE	CABLE CONNECTOR	PRICE
FES34431	MSSD-F	Screw terminal	£2.67

**PLUG SOCKET
FOR MD AND MH COILS**



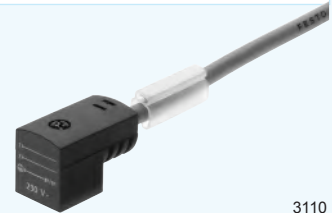
3110

PART NUMBER	TYPE	PRICE
FES550067	MSSD-N	£1.77

FEATURES

- Suitable for coil connection pattern type C
- Pre-assembled
- Cable length: 2.5 m, 5 m, 10 m

**PLUG SOCKET KMEB
WITH CABLE**



3110

PART NUMBER	TYPE	CABLE LENGTH	SUITABLE FOR COIL VOLTAGE	PRICE
FES151688	KMEB-1-24-2,5-LED	2,5 m	24 V DC	£20.00
FES151689	KMEB-1-24-5-LED	5 m	24 V DC	£23.16
FES193457	KMEB-1-24-10-LED	10 m	24 V DC	£29.46
FES151690	KMEB-1-230AC-2,5	2,5 m	230 V AC	£15.76
FES151691	KMEB-1-230AC-5	5 m	230 V AC	£18.77

ILLUMINATING SEAL MEB-LD



3110

PART NUMBER	TYPE	VOLTAGE	PRICE
FES151717	MEB-LD-12-24DC	12-24 V DC	£13.17
FES151718	MEB-LD-230AC	230 V DC	£18.59

SOLENOID COILS



3110

PART NUMBER	TYPE	VOLTAGE	PRICE
FES4527	MSFG-24/42-50/60	24 V DC / 42 V AC	£17.01
FES34411	MSFG-24/42-50/60-OD	24 V DC / 42 V AC	£14.05



SOLENOID VALVES

FEATURES

- Suitable for high pressure applications with low flow rates
- Can be used on vacuum technology applications
- Valves respond from 0 bar up to the max. operating pressure
- Designed to be unaffected by slight contamination
- Low leakage
- 2/2 In-line poppet valves
- Sealing material FPM
- 24 V DC solenoid coil with 3 pin plug socket
- Brass body



VZWD MEDIA SOLENOID VALVE
15 BAR MAXIMUM PRESSURE

3110

PART NUMBER	TYPE	PORT SIZE	NOMINAL BORE	PRICE
FES1491827	VZWD-L-M22C-M-G18-20-V	1/8"	2.0 mm	£43.75
FES1491836	VZWD-L-M22C-M-G18-30-V	1/8"	3.0 mm	£61.00
FES1491830	VZWD-L-M22C-M-G14-20-V	1/4"	2.0 mm	£50.38
FES1491844	VZWD-L-M22C-M-G14-30-V	1/4"	3.0 mm	£58.35

8 BAR MAXIMUM PRESSURE

FES1491837	VZWD-L-M22C-M-G18-40-V	1/8"	4.0 mm	£70.28
FES1491845	VZWD-L-M22C-M-G14-40-V	1/4"	4.0 mm	£70.28

4 BAR MAXIMUM PRESSURE

FES1491839	VZWD-L-M22C-M-G18-60-V	1/8"	6.0 mm	£70.28
FES1491847	VZWD-L-M22C-M-G14-60-V	1/4"	6.0 mm	£70.28

FEATURES

- Can be used in applications such as cooling of filling systems, vacuum and bottling
- Forced lifting of the diaphragm valve via servo hole
- Operates with no differential pressure between inlet and outlet
- Medium pressure – 0 bar or higher
- 2/2 In-line valve
- Sealing material NPR
- 24 V DC solenoid coil with 3 pin plug socket
- Brass body



VZWF FORCE PILOT OPERATED SOLENOID VALVE
10 BAR MAXIMUM PRESSURE,
13.5 MM NOMINAL BORE

3110

PART NUMBER	TYPE	PROCESS VALVE CONNECTION	PRICE
FES1492110	VZWF-B-L-M22C-G14-135-1	G1/4	£69.63
FES1492111	VZWF-B-L-M22C-G38-135-1	G3/8	£69.63
FES1492112	VZWF-B-L-M22C-G12-135-1	G1/2	£69.63

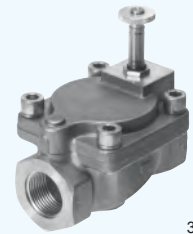
**6 BAR MAXIMUM PRESSURE,
27.5 MM NOMINAL BORE**

FES1492113	VZWF-B-L-M22C-G34-275-1	G3/4	£111.42
FES1492114	VZWF-B-L-M22C-G1-275-1P	G1	£111.42

DIAPHRAGM VALVES

FEATURES

- Indirectly controlled poppet valve with diaphragm control
- Connection – valve G1/4" to G2"
- Brass body
- Varied range of coils
- Flow rate, 1400 to 31,000 l/min



VZWM-L DIAPHRAGM VALVE

3110

PART NUMBER	TYPE	ARMATURE TUBE	PORT SIZE	PRICE
FES546146	VZWM-L-M22C-G14-F4	F4	1/4"	£70.79
FES546147	VZWM-L-M22C-G38-F4	F4	3/8"	£70.79
FES546148	VZWM-L-M22C-G12-F4	F4	1/2"	£70.79
FES546149	VZWM-L-M22C-G34-F4	F4	3/4"	£111.65
FES546150	VZWM-L-M22C-G1-F4	F4	1"	£111.65
FES546152	VZWM-L-M22C-G112-F5	F5	1 1/2"	£295.53
FES546151	VZWM-L-M22C-G114-F5	F5	1 1/4"	£295.53
FES546153	VZWM-L-M22C-G2-F5	F5	2"	£341.82

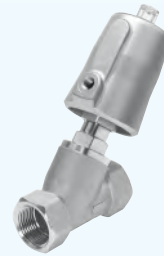




ANGLE SEAT VALVE

FEATURES

- Low flow resistance
- Insensitive to steam or slightly contaminated media
- Long service life
- Low maintenance
- High chemical and thermal resistance
- Angle seat valves are simple and sturdy, suitable for viscosity of up to 600 mm²/s
- Brass body
- NBR seal



VZXF ANGLE SEAT VALVE
2/2 WAY, NORMALLY CLOSED

3110

PART NUMBER	TYPE	PROCESS VALVE CONNECTION	MEDIUM PRESSURE (BAR)	PRICE
FES1002501	VZXF-L-M22C-M-B-G12-120-H3B1-50-16	G1/2"	16	£118.68
FES1002503	VZXF-L-M22C-M-B-G34-160-H3B1-50-16	G3/4"	16	£125.31
FES1002505	VZXF-L-M22C-M-B-G1-230-H3B1-50-10	G1"	10	£135.15
FES1002509	VZXF-L-M22C-M-B-G112-350-H3B1-50-6	G1 1/2"	6	£180.81
FES1002511	VXZF-L-M22C-M-B-G2-430-H3B1-50-3	G2"	3	£215.99

Eight

FEATURES

- Highly flexible, extremely high flow rates
- Long service life
- Stainless steel or Ecobross angle seat fittings with stainless steel or polymer actuators



VZXA ANGLE SEAT VALVE
2/2 WAY, NORMALLY CLOSED

3110

PART NUMBER	TYPE	PROCESS VALVE CONNECTION	MEDIUM PRESSURE (BAR)	PRICE
FES8060530	VZXA-B-TS6-25-M2-V13T-8.3-K-46	G1"	5 to 10	£265.94
FES8060528	VZXA-B-TS6-20-M2-V13T-12.8-K-4	G 3/4"	5 to 10	£248.23
FES8060527	VZXA-B-TS6-13-M2-V13T-30-K-46	G1/2"	0 to 30	£240.38

ACTUATED PROCESS VALVES

FEATURES

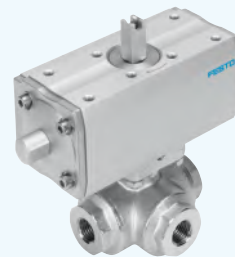
- Combined pneumatic quarter turn actuator and ball valve
- Flow is fully opened or closed in both directions
- Limit switch attachments for end position sensing, can be mounted directly on unit
- Suitable for valves with port pattern to NAMUR

SPECIFICATIONS

Thread connection	G pipe with 2 pitch circle diameters of 36 and 42 mm
Nominal pressure	63 bar
Control valve	2/2-way directional
Swivel direction	Right
Nominal swivel angle	90°
End position adjustment	Closed

MATERIALS

Housing & shut-off element	316 stainless steel
Seal	Reinforced PTFE



VZBA BALL VALVE AND ACTUATOR UNIT

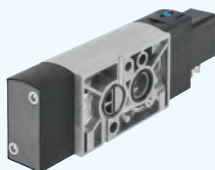
3110

PART NUMBER	TYPE	ACTUATOR	PORT SIZE	PRICE
FES1758071	VZBA-1/2"-GG-63-T-22-F0304-V4V4T-PS15-R-90-4-C	Single acting	1/2"	£267.38
FES1809653	VZBA-1/2"-GG-63-T-22-F0304-V4V4T-PP15-R-90-C	Double acting	1/2"	£227.37
FES1758072	VZBA-3/4"-GG-63-T-22-F0304-V4V4T-PS30-R-90-4-C	Single acting	3/4"	£321.43
FES1809654	VZBA-3/4"-GG-63-T-22-F0304-V4V4T-PP30-R-90-C	Double acting	3/4"	£258.36
FES1758073	VZBA-1"-GG-63-T-22-F0405-V4V4T-PS30-R-90-4-C	Single acting	1"	£358.86
FES1809655	VZBA-1"-GG-63-T-22-F0405-V4V4T-PP30-R-90-C	Double acting	1"	£295.71

NAMUR SOLENOID VALVES

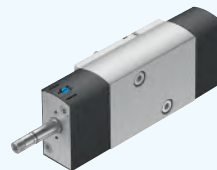
FEATURES

- Operating voltage DC
- Cost optimised variant with plastic cover, brass armature tube and IP65 coils
- Conversion from 3/2 way to 5/2 way valve simply by turning the seal



VSNC NAMUR SOLENOID VALVE
SINGLE SOLENOID, 24 V DC, TYPE B CONNECTOR 3110

PART NUMBER	TYPE	FUNCTION	PRICE
FES577295	VSNC-FC-M52-MD-G14-F8-1B2	5/2-way or 3/2-way	£75.58



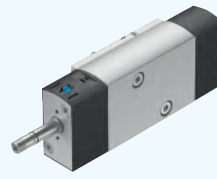
VSNC NAMUR SOLENOID VALVE
SINGLE SOLENOID, WITHOUT COIL
9 MM ARMATURE TUBE 3110

PART NUMBER	TYPE	FUNCTION	PRICE
FES577267	VSNC-FC-M52-MD-G14-FN	5/2-way or 3/2-way	£72.17



VSNC NAMUR SOLENOID VALVE
DOUBLE SOLENOID, 24 V DC, TYPE B CONNECTOR 3110

PART NUMBER	TYPE	FUNCTION	PRICE
FES577296	VSNC-F-B52-D-G14-F8-1B2	5/2-way or 3/2-way	£116.28



VSNC NAMUR SOLENOID VALVE
SINGLE SOLENOID, WITHOUT COIL
8 MM ARMATURE TUBE 3110

PART NUMBER	TYPE	FUNCTION	PRICE
FES577257	VSNC-FC-M52-MD-G14-F8	5/2-way or 3/2-way	£64.72

POSITIONER CMSX

FEATURES

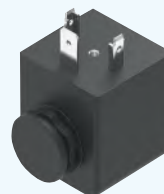
- Polymer body
 - Hole pattern 30 x 80 mm
 - LCD, backlit display
 - Position feedback, 4 to 20 mA
 - Double acting
- For use with double acting VZBA ball drive and actuator



POSITIONER CMSX 3110

PART NUMBER	TYPE	SAFETY FUNCTION	PRICE
FES2092434	CMSX-P-S-A1-C-U-F1-D-A	Fail to open or close in case of breakdown	£532.99
FES2110841	CMSX-P-S-A1-C-U-F1-D-C	Maintain position in case of breakdown	£532.99

SOLENOID COILS



SOLENOID COILS 3110

PART NUMBER	TYPE	SIZE	VOLTAGE	PRICE
FES8029144	VACN-N-A1-1	9 mm	24V DC 0.7 W	£11.41
FES8030822	VACF-A-A1-1	8 mm	24V DC 2.6 W	£11.31

MANUALLY ACTUATED



3110

FINGER LEVER VALVE

PART NUMBER	TYPE	FUNCTION	PRICE
FES4500004	VHEF-L-M52-E-G14	5/2	£115.80
FES4500005	VHEF-L-M52-E-G18	5/2	£98.43
FES4500000	VHEF-L-M52-M-G14	5/2	£91.91
FES4500001	VHEF-L-M52-M-G18	5/2	£78.12
FES4500008	VHEF-LT-M32-M-G14	3/2	£73.98
FES4500009	VHEF-LT-M32-M-G18	3/2	£62.89



3110

PUSH BUTTON VALVE

PART NUMBER	TYPE	FUNCTION	PRICE
FES5299716	VHEF-P-B52-G14	5/2	£114.13
FES5299710	VHEF-P-B52-G18	5/2	£83.00
FES5299715	VHEF-P-M52-M-G14	5/2	£114.13
FES5299709	VHEF-P-M52-M-G18	5/2	£83.00
FES5299713	VHEF-PTC-B32-G14	3/2	£90.30
FES5299707	VHEF-PTC-B32-G18	3/2	£72.23
FES5299711	VHEF-PTC-M32-M-G14	3/2	£90.30
FES5299705	VHEF-PTC-M32-M-G18	3/2	£72.23
FES5299714	VHEF-PTCZ-B32-G14	3/2	£94.83
FES5299708	VHEF-PTCZ-B32-G18	3/2	£75.86
FES5299712	VHEF-PTCZ-M32-M-G14	3/2	£94.83
FES5299706	VHEF-PTCZ-M32-M-G18	3/2	£75.86



3110

HAND LEVER VALVE

PART NUMBER	TYPE	FUNCTION	PRICE
FES4165864	VHEF-HS-B52-G14	5/2	£179.01
FES4165863	VHEF-HS-B52-G18	5/2	£143.21
FES4165866	VHEF-HS-B53C-G14	5/3	£187.54
FES4165865	VHEF-HS-B53C-G18	5/3	£150.04
FES4165868	VHEF-HS-B53E-G14	5/3	£187.54
FES4165867	VHEF-HS-B53E-G18	5/3	£150.04
FES4165856	VHEF-HS-M52-M-G14	5/2	£179.01
FES4165855	VHEF-HS-M52-M-G18	5/2	£143.21
FES4165858	VHEF-HS-P53C-M-G14	5/3	£187.54
FES4165857	VHEF-HS-P53C-M-G18	5/3	£150.04
FES4165860	VHEF-HS-P53E-M-G14	5/3	£187.54
FES4165859	VHEF-HS-P53E-M-G18	5/3	£150.04
FES4165862	VHEF-HST-B32-G14	3/2	£108.97
FES4165861	VHEF-HST-B32-G18	3/2	£87.17
FES4165854	VHEF-HST-M32-M-G14	3/2	£108.97
FES4165853	VHEF-HST-M32-M-G18	3/2	£87.17



3110

SELECTOR VALVE

PART NUMBER	TYPE	FUNCTION	PRICE
FES4106817	VHEF-ES-B52-G14	5/2	£114.13
FES4106816	VHEF-ES-B52-G18	5/2	£91.31
FES4106819	VHEF-ES-B53C-G14	5/3	£119.56
FES4106818	VHEF-ES-B53C-G18	5/3	£95.65
FES4106821	VHEF-ES-B53E-G14	5/3	£119.56
FES4106820	VHEF-ES-B53E-G18	5/3	£95.65
FES4106809	VHEF-ES-M52-M-G14	5/2	£114.13
FES4106808	VHEF-ES-M52-M-G18	5/2	£91.31
FES4106811	VHEF-ES-P53C-M-G14	5/3	£119.56
FES4106810	VHEF-ES-P53C-M-G18	5/3	£95.65
FES4106813	VHEF-ES-P53E-M-G14	5/3	£119.56
FES4106812	VHEF-ES-P53E-M-G18	5/3	£95.65
FES4106815	VHEF-EST-B32-G14	3/2	£69.48
FES4106814	VHEF-EST-B32-G18	3/2	£55.58
FES4106807	VHEF-EST-M32-M-G14	3/2	£69.48
FES4106806	VHEF-EST-M32-M-G18	3/2	£55.58

MECHANICALLY ACTUATED



STEM ACTUATED VALVE

3110

PART NUMBER	TYPE	FUNCTION	PRICE
FES8031304	VMEF-S-M52-E-G14	5/2	£102.54
FES8031299	VMEF-S-M52-E-G18	5/2	£82.02
FES8031302	VMEF-S-M52-M-G14	5/2	£85.44
FES8031297	VMEF-S-M52-M-G18	5/2	£68.35
FES8031300	VMEF-ST-M32-M-G14	3/2 Closed	£52.01
FES8031295	VMEF-ST-M32-M-G18	3/2 Closed	£41.61



ROLLER LEVER VALVE

3110

PART NUMBER	TYPE	FUNCTION	PRICE
FES8047102	VMEF-K-M52-M-G14	5/2	£122.05
FES8049240	VMEF-K-M52-M-G18	5/2	£97.65
FES8047103	VMEF-KT-M32-M-G14	3/2	£98.25
FES8049241	VMEF-KT-M32-M-G18	3/2	£78.60
FES8047093	VMEF-R-M52-E-G14	5/2	£134.85
FES8047092	VMEF-R-M52-E-G18	5/2	£107.87
FES8047094	VMEF-R-M52-M-G14	5/2	£117.99
FES8049238	VMEF-R-M52-M-G18	5/2	£94.39
FES8047095	VMEF-RT-M32-M-G14	3/2	£94.98
FES8049239	VMEF-RT-M32-M-G18	3/2	£75.98

ACCESSORIES



MUSHROOM PUSH BUTTON

3110

PART NUMBER	TYPE	PRICE
FES9293	P-22-SW	£15.61
FES9295	P-30-SW	£17.23



KEY ACTUATOR

3110

PART NUMBER	TYPE	PRICE
FES573107	Q-22-B	£79.02
FES9304	Q-30	£82.00



MUSHROOM PUSH BUTTON WITH DETENT

3110

PART NUMBER	TYPE	PRICE
FES9297	PR-22-RT	£19.29
FES9298	PR-30-RT	£20.95
FES573108	PRS-22-RT-B	£85.10
FES9300	PRS-30-RT	£90.31



TOGGLE SWITCH

3110

PART NUMBER	TYPE	PRICE
FES9305	H-22-SW	£22.73
FES9306	H-30-SW	£24.52



PUSH BUTTON ACTUATOR

3110

PART NUMBER	TYPE	FUNCTION	PRICE
FES9290	T-22-GE	3/2	£12.03
FES9997	T-22-RT	3/2	£12.03
FES9289	T-22-SW	3/2	£12.03
FES9292	T-30-GE	3/2	£13.59
FES10014	T-30-RT	3/2	£13.59
FES9291	T-30-SW	3/2	£13.59



SELECTOR SWITCH

3110

PART NUMBER	TYPE	PRICE
FES9301	N-22-SW	£17.23
FES9302	N-30-SW	£19.29



FRONT PANEL VALVE

3110

PART NUMBER	TYPE	FUNCTION	PRICE
FES6817	SV-3-M5	3/2 Closed	£47.23

FRL SERVICE UNITS – FRL TYPE CODES

Series		Type		Pneumatic connection		Pressure gauge		Pressure gauge scale	
Code	Description	Code	Description	Code	Description	Code	Description	Code	Description
MSB4	MS series basic (40 mm grid)	LFR	Filter regulator	1/4	1/4"		Without		None
MSB6	MS series basic (62 mm grid)	LR	Pressure regulator	1/2	1/2"	AG	Pressure gauge	BAR	Scale used
MS4	MS series standard (40 mm grid)	LOE	Lubricator	G	Without connecting thread				
MS6	MS series standard (62 mm grid)	EM1	Electrical on/off valve						
MS9	MS series standard (90 mm grid)	EE	Electrical on/off valve						
		DL	Electrical soft-start valve						

MS9 - LFR - G - D7 - EUM - AG - BAR - AS

Description	
Code	Description
C3	On-off valve
J1	Filter regulator
FRC5:J1M1	0.5 to 12 bar pressure regulation 40 micron filtration Manual rotary condensate drain Plastic bowl guard
Pressure regulation	
Code	Description
D5	0.3 to 5 bar
D6	0.3 to 7 bar (MS4 and MS6) 0.5 to 7 bar manually operated (MS9)
D7	0.5 to 12 bar (MS4 and MS6) 0.5 to 12 bar manually operated (MS9)
Electrical supply voltage	
Code	Description
	N/A
10V24	24 V DC

Grade of filtration	
Code	Description
C	5 micron filtration
E	40 micron filtration
Bowl guard	
Code	Description
R	Plastic bowl guard
U	Integrated metal bowl
Condensate drain	
Code	Description
M	Manually rotary condensate drain
V	Fully automatic condensate drain

Accessories	
Code	Description
	None
WP	Mounting bracket
AS	Standard rotary knob with detent, locked using accessories
S	Silencer

MS SERIES

FEATURES

- Extremely high flow rates of up to 20,000 l/min
- Maximum flow rates combined with minimum space requirements
- 40 µm filtration to suit all of Festo's pneumatic range – save money on filtration
- 3 featured sizes with port sizes from 1/4" to 1 1/2"
- Fast and reliable exhaust function
- Integrated pressure gauge

SPECIFICATIONS

Flow rate	900 to 20,000 l/min
Temperature range	-10°C to +60°C
Pressure regulator range	0.5 to 12 bar
Filtration grade	40 µm
Bowl guard	MS4 and MS6 – Polymer MS9 – Metal
Pressure gauge	As standard
Lockable	As standard, using padlock



3140

LR PRESSURE REGULATOR

PART NUMBER	TYPE	PNEUMATIC CONNECTION	PRICE
FES529415	MS4-LR-1/4-D5-AS	1/4"	£38.42
FES529419	MS4-LR-1/4-D7-AS	1/4"	£38.42
FES529989	MS6-LR-1/2-D5-AS	1/2"	£54.76
FES529993	MS6-LR-1/2-D7-AS	1/2"	£54.76
FES564136*	MS9-LR-G-D6-AG-BAR-AS	3/4", 1" 1 1/4", 1 1/2"	£202.83

You will need ... **Sub-base set**

- * Products must be purchased with MS series sub-base set to determine port size



... on page 440, section 8



3140

LUBRICATOR

PART NUMBER	TYPE	PRICE
FES564144	MS9-LOE-G-U	£158.46

ON / OFF VALVES STANDARD

PART NUMBER	TYPE	PRICE
FES541258	MS4-EM1-1/4	£38.53
FES542598	MS4-EE-1/4-10V24-S	£107.04
FES541267	MS6-EM1-1/2	£54.62
FES542602	MS6-EE-1/2-10V24-S	£123.42



3140

SOFT START

FES529531	MS4-DL-1/4	£60.71
FES529817	MS6-DL-1/2	£80.36



FRL SERVICE UNITS – MS SERIES

FEATURES

- Extremely high flow rates of up to 20,000 l/min
- Maximum flow rates combined with minimum space requirements
- 40 µm filtration to suit all of Festo's pneumatic range – save money on filtration
- 3 featured sizes with port sizes from 1/4" to 1 1/2"
- Fast and reliable exhaust function
- Integrated pressure gauge

SPECIFICATIONS

Flow rate	900 to 20,000 l/min
Temperature range	-10°C to +60°C
Pressure regulator range	0.5 to 12 bar
Filtration grade	40 µm
Bowl guard	MS4 and MS6 – Polymer MS9 – Metal
Pressure gauge	As standard
Lockable	As standard using padlock



3140

FILTER, REGULATOR AND LUBRICATOR MANUAL DRAIN

PART NUMBER	TYPE	PNEUMATIC CONNECTION	PRICE
FES8025354	MSB4-1/4-C3-J1-WP	1/4"	£122.06
FES8025358	MSB4-1/4-C3-J1-D14-WP	1/4"	£336.39
FES531117	MSB4-1/4-FRC5.J1M1	1/4"	£105.08
FES8025355	MSB6-1/2-C3-J1-WP	1/2"	£160.34
FES8025359	MSB6-1/2-C3-J1-D14-WP	1/2"	£397.77
FES530244	MSB6-1/2-FRC5.J1M1	1/2"	£140.07

FRL SERVICE UNITS – DB SERIES – POLYMER DESIGN

FEATURES

- Performance polymer with robust connection technology
- Connection sizes: G1/8", G1/4"
- Short delivery time, pre-assembled and tested
- FES537642 & FES537643 supplied without pressure gauge

SPECIFICATIONS

Flow rate	400 – 650 l/min
Temperature range	-5°C to +50°C
Input pressure (bar)	1.5 – 10
Pressure regulator range (bar)	0.5 – 7
Filtration grade	40 micron
Type	FRC – Filter, regulator, lubricator LFR – Filter regulator LR – Pressure regulator

LFR FILTER REGULATOR MANUAL DRAIN



3140

PART NUMBER	TYPE	PNEUMATIC CONNECTION	PRICE
FES529144	MS4-LFR-1/4-D6-CRM-AS	1/4"	£59.70
FES529146	MS4-LFR-1/4-D6-CRV-AS	1/4"	£87.72
FES529148	MS4-LFR-1/4-D6-ERM-AS	1/4"	£59.70
FES529152	MS4-LFR-1/4-D7-CRM-AS	1/4"	£59.70
FES529156	MS4-LFR-1/4-D7-ERM-AS	1/4"	£59.70
FES535722	MS4-LFR-1/4-D7-EUV-AS	1/4"	£111.03
FES529176	MS6-LFR-1/2-D6-CRM-AS	1/2"	£75.54
FES529180	MS6-LFR-1/2-D6-ERM-AS	1/2"	£75.54
FES529184	MS6-LFR-1/2-D7-CRM-AS	1/2"	£75.54
FES529188	MS6-LFR-1/2-D7-ERM-AS	1/2"	£75.54
FES564118	MS9-LFR-G-D7-EUM-AG-BAR-AS	3/4", 1", 1 1/4", 1 1/2"	£261.64

FULLY AUTOMATIC DRAIN

FES529150	MS4-LFR-1/4-D6-ERV-AS	1/4"	£87.72
FES529154	MS4-LFR-1/4-D7-CRV-AS	1/4"	£87.72
FES529158	MS4-LFR-1/4-D7-ERV-AS	1/4"	£87.72
FES529178	MS6-LFR-1/2-D6-CRV-AS	1/2"	£103.57
FES529182	MS6-LFR-1/2-D6-ERV-AS	1/2"	£103.57
FES529186	MS6-LFR-1/2-D7-CRV-AS	1/2"	£103.57
FES529190	MS6-LFR-1/2-D7-ERV-AS	1/2"	£103.57
FES564119	MS9-LFR-G-D7-EUV-AG-BAR-AS	3/4", 1", 1 1/4", 1 1/2"	£289.64



3140

POLYMER SERVICE UNIT DB SERIES MANUAL DRAIN

PART NUMBER	TYPE	PORT (BSPP)	PRICE
FES537654	FRC-1/4-DB-7-MINI	1/4"	£80.02
FES539685	LFR-1/4-DB-7-MINI	1/4"	£52.33
FES539682	LR-1/4-DB-7-MINI	1/4"	£32.26

SEMI-AUTOMATIC DRAIN

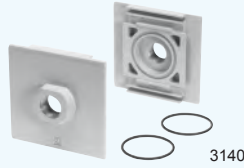
FES537656	FRC-1/4-DB-7-MINI-H	1/4"	£92.94
FES539686	LFR-1/4-DB-7-MINI-H	1/4"	£65.13
FES537643	LR-1/4-DB-7-O-MINI	1/4"	£25.56



MS SERIES ACCESSORIES

Eight

SUB-BASE-SETS*
FOR USE WITH
MS9 LFR & LR SERVICE UNITS



PART NUMBER	TYPE	PNEUMATIC CONNECTION	PRICE
FES552955	MS9-AGE	3/4"	£41.31
FES552956	MS9-AGF	1"	£41.31
FES552957	MS9-AGG	1 1/4"	£41.31
FES552958	MS9-AGH	1 1/2"	£41.31

MSx-WR MOUNTING BRACKET
FOR MOUNTING USING THE
ROTARY KNOB



PART NUMBER	TYPE	PRICE
FES526064	MS4-WR	£3.03
FES526075	MS6-WR	£4.68

CONNECTOR
LOE to LR/LFR



PART NUMBER	TYPE	PRICE
FES8119201	MS4-MV1	£5.71
FES8119204	MS6-MV1	£6.40
FES552950	MS9-MV	£21.42

MANUALLY OPERATED ON-OFF VALVE



PART NUMBER	TYPE	PRICE
FES541268	MS6-EM1-1/2-S	£61.54

PADLOCK



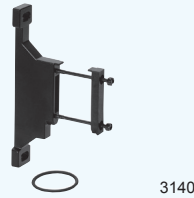
PART NUMBER	TYPE	PRICE
FES193786	LRVS-D	£12.01

BRANCHING MODULE



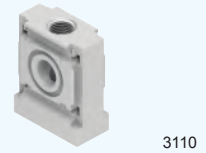
PART NUMBER	TYPE	PRICE
FES529853	MS6-FRM-1/2	£23.20
FES529857	MS6-FRM-1/4	£23.20

MSx-WP
BASIC MOUNTING BRACKET



PART NUMBER	TYPE	PRICE
FES532184	MS4-WP	£12.16
FES532195	MS6-WP	£13.69
FES526073	MS6-WPM-D	£33.34
FES552947	MS9-WP	£24.83

DISTRIBUTOR BLOCK



PART NUMBER	TYPE	PRICE
FES549337	MS6-FRM-FRZ	£19.78

*For use with
MS9 FRL
service units
MS Series



PRESSURE SENSORS

FEATURES

- Programmable and configurable pressure switch for simple pressure sensing tasks
- Relative pressure measurement
- Teach-in function for programming
- Integrated microprocessor
- Switching status indicated by an LED visible from all sides

SPECIFICATIONS

	FP	Freely programmable, N/O contact, N/C contact
	O	Threshold value with fixed hysteresis, 1 teach-in pressure, N/O contact
	C	Threshold value with fixed hysteresis, 1 teach-in pressure, N/C contact
Output function	O1	Threshold value with fixed hysteresis, 2 teach-in pressures, N/O contact
	O2	Threshold value with variable hysteresis, 2 teach-in pressures, N/O contact
	O3	O3 Window comparator with fixed hysteresis, 2 teach-in pressures, N/O contact
Electrical output	P	1 switching output PNP



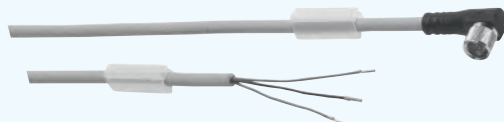
3160

SDE5 PRESSURE SENSORS

PART NUMBER	TYPE	PRESSURE RANGE (BAR)	PRICE
FES542887	SDE5-V1-FP-Q6-P-M8	-1 to 0	£71.30
FES527461	SDE5-V1-O-Q6E-P-M8	-1 to 0	£71.30
FES527458	SDE5-V1-O-Q6-P-M8	-1 to 0	£72.64
FES527460	SDE5-V1-O-Q4E-P-M8	-1 to 0	£71.30
FES527457	SDE5-V1-O-Q4-P-M8	-1 to 0	£72.64
FES542886	SDE5-V1-O1-Q6-P-M8	-1 to 0	£72.64
FES542888	SDE5-D2-O-Q6E-P-K	0 to 2	£73.14
FES542897	SDE5-D10-FP-Q6E-P-M8	0 to 10	£69.98
FES542898	SDE5-D10-FP-Q6-P-M8	0 to 10	£71.30
FES542901	SDE5-D10-FP-Q4E-P-K	0 to 10	£71.82
FES542900	SDE5-D10-FP-Q4E-P-M8	0 to 10	£69.98
FES542899	SDE5-D10-FP-Q6-P-K	0 to 10	£73.14
FES527467	SDE5-D10-O-Q6E-P-M8	0 to 10	£71.30
FES542890	SDE5-D10-O-Q6E-P-K	0 to 10	£73.14
FES527464	SDE5-D10-O-Q6-P-M8	0 to 10	£72.65
FES527466	SDE5-D10-O-Q4E-P-M8	0 to 10	£71.30
FES527463	SDE5-D10-O-Q4-P-M8	0 to 10	£72.64
FES542894	SDE5-D10-C-Q6E-P-M8	0 to 10	£71.30
FES542889	SDE5-D10-C-Q4E-P-M8	0 to 10	£71.30
FES542895	SDE5-D10-C-Q6E-P-K	0 to 10	£73.14
FES542892	SDE5-D10-O2-Q6-P-M8	0 to 10	£72.64
FES542891	SDE5-D10-O2-Q6E-P-M8	0 to 10	£71.30
FES547010	SDE5-D10-O3-Q4E-P-K-X-5&	0 to 10	£74.16

Eight

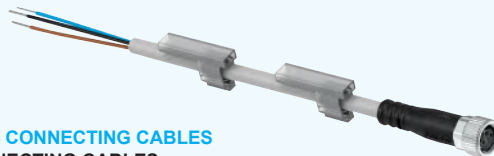
PRESSURE SENSOR ACCESSORIES



SDE5 CONNECTING CABLES
CONNECTING CABLES
ANGLED SOCKET

3110

PART NUMBER	TYPE	CABLE LENGTH	PRICE
FES541338	NEBU-M8W3-K-2.5-LE3	2.5 m	£7.59
FES541341	NEBU-M8W3-K-5-LE3	5.0 m	£11.22
FES541335	NEBU-M8W3-K-10-LE3	10.0 m	£18.51
FES575833	NEBU-M8W4-K-10-LE4	10.0 m	£20.95



SDE5 CONNECTING CABLES
CONNECTING CABLES
STRAIGHT SOCKET

3110

PART NUMBER	TYPE	CABLE LENGTH	PRICE
FES541333	NEBU-M8G3-K-2.5-LE3	2.5 m	£7.59
FES541334	NEBU-M8G3-K-5-LE3	5.0 m	£11.22
FES541363	NEBU-M12G5-K-2.5-LE3	2.5 m	£9.64
FES550326	NEBU-M12G5-K-2.5-LE4	2.5 m	£11.98
FES541330	NEBU-M12G5-K-2.5-LE5	2.5 m	£14.62
FES541364	NEBU-M12G5-K-5-LE3	5.0 m	£13.20
FES541328	NEBU-M12G5-K-5-LE4	5.0 m	£15.73
FES541331	NEBU-M12G5-K-5-LE5	5.0 m	£18.24
FES541332	NEBU-M8G3-K-10-LE3	10.0 m	£18.51
FES541348	NEBU-M8G3-K-2.5-M8G3	2.5 m	£13.47
FES541349	NEBU-M8G3-K-5-M8G3	5.0 m	£17.11
FES554035	NEBU-M8G4-K-2.5-M8G4	2.5 m	£15.88

PRESSURE SENSORS



FEATURES

- Two part, multi-coloured display
- Copy function (settings can be transferred from one device to another)
- Simple commissioning, thanks to intuitive operation
- Compact design 30 x 30 mm



SPAN PRESSURE SENSORS WITH DISPLAY

CABLE CONNECTION



3160

PART NUMBER	TYPE	PRESSURE RANGE (BAR)	ELECTRIC OUTPUT	PRICE
FES8035545	SPAN-B2R-G18M-PN-PN-L1	-1 to +1	2x PNP	£88.09
FES8035544	SPAN-P10R-G18M-PN-PN-L1	0 to 10	2x PNP	£88.09
FES8035544	SPAN-P10R-G18M-PN-PN-L1	0 to 10	2x NPN	£88.09

M8x1 PLUG CONNECTION

FES8035545	SPAN-B2R-G18M-PN-PN-L1	-1 to +1	2x PNP	£88.09
FES8035544	SPAN-P10R-G18M-PN-PN-L1	0 to 10	2x PNP	£88.09

PRESSURE SENSOR ACCESSORIES



SAMH-PN-F
FRONT PANEL
INSTALLATION KIT



3110

PART NUMBER	TYPE	PRICE
FES8035561	SAMH-PN-F	£9.03

PRESSURE SWITCH



3110

PART NUMBER	TYPE	PRICE
FES10773	PEV-1/4-B	£120.10

SACC-PN-G
PROTECTIVE COVER



3110

PART NUMBER	TYPE	PRICE
FES8035560	SACC-PN-G	£6.99

NEBU-M8 CONNECTING CABLE
M8x1 4-WIRE, STRAIGHT SOCKET



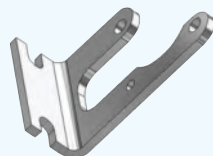
3110

PART NUMBER	TYPE	CABLE LENGTH	PRICE
FES541342	NEBU-M8G4-K-2.5-LE4	2.5 m	£9.98
FES541343	NEBU-M8G4-K-5-LE4	5.0 m	£13.61

M8x1 4-WIRE ANGLED SOCKET

FES541344	NEBU-M8W4-K-2.5-LE4	2.5 m	£9.98
FES541345	NEBU-M8W4-K-5-LE4	5.0 m	£13.61

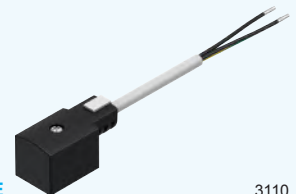
SAMH-PU-A
MOUNTING BRACKET



3110

PART NUMBER	TYPE	PRICE
FES8003354	SAMH-PU-A	£6.62

PLUG SOCKET WITH CABLE



3110

PART NUMBER	TYPE	PRICE
FES30935	KMF-1-24DC-2.5-LED	£16.17



PLASTIC TUBING

FEATURES

- Extremely flexible polyurethane tubing
- High resistance to stress cracks
- RoHS-compliant
- Operating media: compressed air, vacuum



3130

PEN – POLYETHYLENE NATURAL – 50 M COIL

PART NUMBER	TYPE	mm	mm	mtrs	PRICE per coil
FES543246	PEN-4X0.75-NT	4.0	0.75	50	£16.50
FES543247	PEN-6X1-NT	6.0	1.0	50	£24.50
FES543248	PEN-8X1.25-NT	8.0	1.25	50	£32.00
FES543249	PEN-10X1.5-NT	10.0	1.5	50	£46.00
FES543250	PEN-12X1.75-NT	12.0	1.75	50	£61.00
FES543251	PEN-16X2.5-NT	16.0	2.5	50	£112.00

FEATURES

- Extremely flexible polyurethane tubing
- Suitable for use with food and FDA compliant
- High resistance to microbes and hydrolysis
- Operating media: compressed air, vacuum, water
- Suitable for energy chains



3130

PUN-H – POLYURETHANE HYDROLYSIS RESISTANT SILVER – 50 M COIL

PART NUMBER	TYPE	mm	mm	mtrs	PRICE per coil
FES558277	PUN-H-3X0.5-SI	3.0	0.5	50	£29.00
FES558278	PUN-H-4X0.75-SI	4.0	0.75	50	£32.50
FES558279	PUN-H-6X1-SI	6.0	1.0	50	£48.00
FES558280	PUN-H-8X1.25-SI	8.0	1.25	50	£69.00
FES558281	PUN-H-10X1.5-SI	10.0	1.5	50	£104.00
FES558282	PUN-H-12X2-SI	12.0	2.0	50	£145.50
FES558283	PUN-H-16X2.5-SI	16.0	2.5	50	£254.50

SILVER – 200 M COIL

FES558275	PUN-H-12X2-SI-200	12.0	2.0	200	£466.00
-----------	-------------------	------	-----	-----	---------

SILVER – 300 M COIL

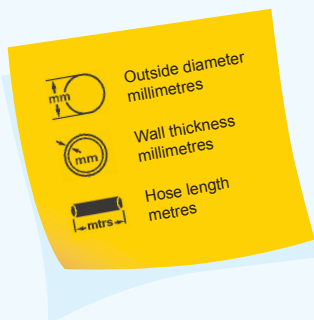
FES558274	PUN-H-10X1.5-SI-300	10.0	1.5	300	£486.00
-----------	---------------------	------	-----	-----	---------

SILVER – 400 M COIL

FES558273	PUN-H-8X1.25-SI-400	8.0	1.25	400	£436.00
-----------	---------------------	-----	------	-----	---------

SILVER – 500 M COIL

FES558271	PUN-H-4X0.75-SI-500	4.0	0.75	500	£245.00
FES558272	PUN-H-6X1-SI-500	6.0	1.0	500	£375.00



3130

PEN – POLYETHYLENE BLACK – 50 M COIL

PART NUMBER	TYPE	mm	mm	mtrs	PRICE per coil
FES543240	PEN-4X0.75-SW	4.0	0.75	50	£16.50
FES543241	PEN-6X1-SW	6.0	1.0	50	£24.50
FES543242	PEN-8X1.25-SW	8.0	1.25	50	£32.00
FES543243	PEN-10X1.5-SW	10.0	1.5	50	£46.00
FES543244	PEN-12X1.75-SW	12.0	1.75	50	£61.00
FES543245	PEN-16X2.5-SW	16.0	2.5	50	£112.00

PUN-H – POLYURETHANE HYDROLYSIS RESISTANT BLUE – 50 M COIL



3130

PART NUMBER	TYPE	mm	mm	mtrs	PRICE per coil
FES197383	PUN-H-4X0.75-BL	4.0	0.75	50	£32.50
FES197384	PUN-H-6X1-BL	6.0	1.0	50	£48.00
FES197385	PUN-H-8X1.25-BL	8.0	1.25	50	£69.00
FES197386	PUN-H-10X1.5-BL	10.0	1.5	50	£104.00
FES197387	PUN-H-12X2-BL	12.0	2.0	50	£145.50

BLUE – 200 M COIL

FES558261	PUN-H-12X2-BL-200	12.0	2.0	200	£466.00
-----------	-------------------	------	-----	-----	---------

BLUE – 300 M COIL

FES558260	PUN-H-10X1.5-BL-300	10.0	1.5	300	£486.00
-----------	---------------------	------	-----	-----	---------

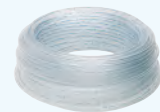
BLUE – 400 M COIL

FES558259	PUN-H-8X1.25-BL-400	8.0	1.5	400	£436.00
-----------	---------------------	-----	-----	-----	---------

BLUE – 500 M COIL

FES558257	PUN-H-4X0.75-BL-500	4.0	0.75	500	£245.00
FES558258	PUN-H-6X1-BL-500	6.0	1.0	500	£375.00

PUN-H – POLYURETHANE HYDROLYSIS RESISTANT NATURAL – 50 M COIL



3130

PART NUMBER	TYPE	mm	mm	mtrs	PRICE per coil
FES197376	PUN-H-4x0,75-NT	4.0	0.75	50	£32.50
FES197377	PUN-H-6x1-NT	6.0	1.0	50	£48.00
FES197378	PUN-H-8x1,25-NT	8.0	1.25	50	£69.00
FES197379	PUN-H-10x1,5-NT	10.0	1.5	50	£104.00
FES197380	PUN-H-12x2-NT	12.0	2.0	50	£145.50

NATURAL – 200 M COIL

FES558268	PUN-H-12x2-NT-200	12.0	2.0	200	£466.00
-----------	-------------------	------	-----	-----	---------

NATURAL – 300 M COIL

FES558267	PUN-H-10x1,5-NT-300	10.0	1.5	300	£486.00
-----------	---------------------	------	-----	-----	---------

NATURAL – 400 M COIL

FES558266	PUN-H-8x1,25-NT-400	8.0	1.25	400	£436.00
-----------	---------------------	-----	------	-----	---------

NATURAL – 500 M COIL

FES558264	PUN-H-4x0,75-NT-500	4.0	0.75	500	£245.00
FES558265	PUN-H-6x1-NT-500	6.0	1.0	500	£375.00



PLASTIC TUBING

FEATURES

- Extremely flexible polyurethane tubing
- Suitable for use with food and FDA compliant
- High resistance to microbes and hydrolysis
- Operating media: compressed air, vacuum, water



Eight

PUN-H – POLYURETHANE
HYDROLYSIS RESISTANT

TRANSLUCENT BLUE – 50 M COIL



3130

PART NUMBER	TYPE	mm	mm	mtrs	PRICE per coil
FES8048671	PUN-H-4X0,75-TBL	4.0	0.75	50	£32.50
FES8048681	PUN-H-6X1-TBL	6.0	1.00	50	£48.00
FES8048691	PUN-H-8X1,25-TBL	8.0	1.25	50	£69.00
FES8048701	PUN-H-10X1,5-TBL	10.0	1.50	50	£104.00
FES8048711	PUN-H-12X2-TBL	12.0	2.00	50	£145.50

PUN-H – POLYURETHANE
HYDROLYSIS RESISTANT

TRANSLUCENT RED



3130

PART NUMBER	TYPE	mm	mm	mtrs	PRICE per coil
FES8048675	PUN-H-4X0,75-TRT	4.0	0.75	50	£32.50
FES8048685	PUN-H-6X1-TRT	6.0	1.00	50	£48.00
FES8048695	PUN-H-8X1,25-TRT	8.0	1.25	50	£69.00
FES8048705	PUN-H-10X1,5-TRT	10.0	1.50	50	£104.00
FES8048715	PUN-H-12X2-TRT	12.0	2.00	50	£145.50

PUN-H – POLYURETHANE
HYDROLYSIS RESISTANT

TRANSLUCENT YELLOW



3130

PART NUMBER	TYPE	mm	mm	mtrs	PRICE per coil
FES8048679	PUN-H-4X0,75-TGE	4.0	0.75	50	£32.50
FES8048689	PUN-H-6X1-TGE	6.0	1.00	50	£48.00
FES8048699	PUN-H-8X1,25-TGE	8.0	1.25	50	£69.00
FES8048709	PUN-H-10X1,5-TGE	10.0	1.50	50	£104.00
FES8048719	PUN-H-12X2-TGE	12.0	2.00	50	£145.50

PUN-H – POLYURETHANE
HYDROLYSIS RESISTANT

TRANSLUCENT BLACK



3130

PART NUMBER	TYPE	mm	mm	mtrs	PRICE per coil
FES8048673	PUN-H-4X0,75-TSW	4.0	0.75	50	£32.50
FES8048683	PUN-H-6X1-TSW	6.0	1.00	50	£48.00
FES8048693	PUN-H-8X1,25-TSW	8.0	1.25	50	£69.00
FES8048703	PUN-H-10X1,5-TSW	10.0	1.50	50	£104.00
FES8048713	PUN-H-12X2-TSW	12.0	2.00	50	£145.50

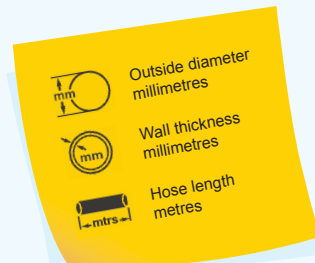
PUN-H – POLYURETHANE
HYDROLYSIS RESISTANT

TRANSLUCENT GREEN



3130

PART NUMBER	TYPE	mm	mm	mtrs	PRICE per coil
FES8048677	PUN-H-4X0,75-TGN	4.0	0.75	50	£32.50
FES8048687	PUN-H-6X1-TGN	6.0	1.00	50	£48.00
FES8048697	PUN-H-8X1,25-TGN	8.0	1.25	50	£69.00
FES8048707	PUN-H-10X1,5-TGN	10.0	1.50	50	£104.00
FES8048717	PUN-H-12X2-TGN	12.0	2.00	50	£145.50





QS SERIES QUICK STAR – STANDARD PUSH-IN FITTINGS

FEATURES

- Simple and reliable connection and release
- Wide range of variants: standard, mini size, metal, stainless steel, flame retardant with R and G metric thread
- Types in accordance with ATEX directive for potentially explosive atmospheres

SPECIFICATIONS

Pressure range (bar)	-0.95 to +14
Temperature range	-10°C to +80°C

MATERIALS

Release ring	Polyacetate
Seal	Nitrile rubber
Body	Polybutene terephthalate, nickel plated brass
Tube retaining claw	High alloy stainless steel
Threaded coupling	Nickel plated brass

QS – STRAIGHT

BSPT MALE WITH EXTERNAL HEX
SOLD IN PACKS OF 10



3130

PART NUMBER	TYPE	THREAD	TUBE OD	PRICE each
FES153001	QS-1/8-4	1/8" BSPT	4 mm	£1.67
FES153002	QS-1/8-6	1/8" BSPT	6 mm	£1.74
FES153004	QS-1/8-8	1/8" BSPT	8 mm	£2.11
FES190643	QS-1/8-10	1/8" BSPT	10 mm	£2.69
FES190644	QS-1/4-4	1/4" BSPT	4 mm	£1.87
FES153003	QS-1/4-6	1/4" BSPT	6 mm	£2.06
FES153005	QS-1/4-8	1/4" BSPT	8 mm	£2.19
FES153007	QS-1/4-10	1/4" BSPT	10 mm	£2.67
FES164980	QS-1/4-12	1/4" BSPT	12 mm	£3.11
FES190645	QS-3/8-6	3/8" BSPT	6 mm	£2.29
FES153006	QS-3/8-8	3/8" BSPT	8 mm	£2.37
FES153008	QS-3/8-10	3/8" BSPT	10 mm	£2.92
FES153009	QS-3/8-12	3/8" BSPT	12 mm	£3.52
FES164957	QS-3/8-16	3/8" BSPT	16 mm	£10.96
FES190646	QS-1/2-10	1/2" BSPT	10 mm	£4.20
FES153010	QS-1/2-12	1/2" BSPT	12 mm	£4.39
FES153011	QS-1/2-16	1/2" BSPT	16 mm	£8.37

Image shown with BSPT
male thread



3130

QS – STRAIGHT

BSPP MALE WITH EXTERNAL HEX
SOLD IN PACKS OF 10

PART NUMBER	TYPE	THREAD	TUBE OD	PRICE each
FES186095	QS-G1/8-4	1/8" BSPP	4 mm	£1.86
FES186096	QS-G1/8-6	1/8" BSPP	6 mm	£2.06
FES186098	QS-G1/8-8	1/8" BSPP	8 mm	£2.44
FES186097	QS-G1/4-6	1/4" BSPP	6 mm	£2.21
FES186099	QS-G1/4-8	1/4" BSPP	8 mm	£2.58
FES186101	QS-G1/4-10	1/4" BSPP	10 mm	£3.08
FES186350	QS-G1/4-12	1/4" BSPP	12 mm	£3.54
FES186100	QS-G3/8-8	3/8" BSPP	8 mm	£2.70
FES186102	QS-G3/8-10	3/8" BSPP	10 mm	£3.41
FES186103	QS-G3/8-12	3/8" BSPP	12 mm	£3.95
FES186347	QS-G3/8-16	3/8" BSPP	16 mm	£12.35
FES186104	QS-G1/2-12	1/2" BSPP	12 mm	£4.92
FES186105	QS-G1/2-16	1/2" BSPP	16 mm	£9.52

QS – EQUAL STRAIGHT

SOLD IN PACKS OF 10



3130

PART NUMBER	TYPE	TUBE OD	PRICE each
FES153031	QS-4	4 mm	£2.92
FES153032	QS-6	6 mm	£3.08
FES153033	QS-8	8 mm	£3.35
FES153034	QS-10	10 mm	£4.43
FES153035	QS-12	12 mm	£5.22
FES153036	QS-16	16 mm	£8.49

QS – REDUCING STRAIGHT

SOLD IN PACKS OF 10



3130

PART NUMBER	TYPE	TUBE OD	TUBE OD	PRICE each
FES153037	QS-6-4	6 mm	4 mm	£3.06
FES130606	QS-8-4	8 mm	4 mm	£4.48
FES153038	QS-8-6	8 mm	6 mm	£3.35
FES130607	QS-10-6	10 mm	6 mm	£5.81
FES153039	QS-10-8	10 mm	8 mm	£4.43
FES130608	QS-12-8	12 mm	8 mm	£6.62
FES153040	QS-12-10	12 mm	10 mm	£4.64

QS-H – REDUCING STRAIGHT

PUSH-IN SLEEVE/PUSH-IN CONNECTOR
SOLD IN PACKS OF 10



3130

PART NUMBER	TYPE	TUBE OD	TUBE OD	PRICE each
FES153041	QS-6H-4	6 mm	4 mm	£3.06
FES130622	QS-8H-4	8 mm	4 mm	£4.05
FES153042	QS-8H-6	8 mm	6 mm	£3.35
FES130623	QS-10H-6	10 mm	6 mm	£4.54
FES153043	QS-10H-8	10 mm	8 mm	£4.43
FES132981	QS-12H-6	12 mm	6 mm	£5.59
FES130624	QS-12H-8	12 mm	8 mm	£6.62
FES153044	QS-12H-10	12 mm	10 mm	£4.64

QS-I – STRAIGHT

BSPT MALE WITH INTERNAL HEX
SOLD IN PACKS OF 10



3130

PART NUMBER	TYPE	THREAD	TUBE OD	PRICE each
FES153012	QS-1/8-4-I	1/8" BSPT	4 mm	£1.92
FES153013	QS-1/8-6-I	1/8" BSPT	6 mm	£2.11
FES153015	QS-1/8-8-I	1/8" BSPT	8 mm	£2.30
FES190647	QS-1/8-10-I	1/8" BSPT	10 mm	£2.88
FES153014	QS-1/4-6-I	1/4" BSPT	6 mm	£2.30
FES153016	QS-1/4-8-I	1/4" BSPT	8 mm	£2.44
FES153018	QS-1/4-10-I	1/4" BSPT	10 mm	£3.06
FES190649	QS-1/4-12-I	1/4" BSPT	12 mm	£3.93
FES153017	QS-3/8-8-I	3/8" BSPT	8 mm	£3.22
FES153019	QS-3/8-10-I	3/8" BSPT	10 mm	£3.60
FES153020	QS-3/8-12-I	3/8" BSPT	12 mm	£4.14
FES190648	QS-1/2-10-I	1/2" BSPT	10 mm	£4.64
FES153021	QS-1/2-12-I	1/2" BSPT	12 mm	£4.88



QS SERIES QUICK STAR – STANDARD PUSH-IN FITTINGS

QS-I – STRAIGHT

BSPP MALE WITH INTERNAL HEX
SOLD IN PACKS OF 10



3130

PART NUMBER	TYPE	THREAD	TUBE OD	PRICE each
FES186106	QS-G1/8-4-I	1/8" BSPP	4 mm	£2.21
FES186107	QS-G1/8-6-I	1/8" BSPP	6 mm	£2.35
FES186109	QS-G1/8-8-I	1/8" BSPP	8 mm	£2.58
FES132999	QS-G1/8-10-I	1/8" BSPP	10 mm	£2.98
FES186108	QS-G1/4-6-I	1/4" BSPP	6 mm	£2.58
FES186110	QS-G1/4-8-I	1/4" BSPP	8 mm	£2.70
FES186112	QS-G1/4-10-I	1/4" BSPP	10 mm	£3.46
FES186111	QS-G3/8-8-I	3/8" BSPP	8 mm	£3.67
FES186113	QS-G3/8-10-I	3/8" BSPP	10 mm	£4.04
FES186114	QS-G3/8-12-I	3/8" BSPP	12 mm	£4.63
FES186115	QS-G1/2-12-I	1/2" BSPP	12 mm	£5.36

QSL – EQUAL ELBOW
SOLD IN PACKS OF 10



3130

PART NUMBER	TYPE	TUBE OD	PRICE each
FES153070	QSL-4	4 mm	£2.92
FES153071	QSL-6	6 mm	£3.22
FES153072	QSL-8	8 mm	£3.52
FES153073	QSL-10	10 mm	£4.72
FES153074	QSL-12	12 mm	£5.87
FES153075	QSL-16	16 mm	£8.49

QSLF – 360° SWIVEL ELBOW
BSPP FEMALE WITH EXTERNAL HEX
SOLD IN PACKS OF 10



3130

PART NUMBER	TYPE	THREAD	TUBE OD	PRICE each
FES153273	QSLF-1/8-4-B	1/8" BSPP	4 mm	£4.10
FES153274	QSLF-1/8-6-B	1/8" BSPP	6 mm	£4.05
FES153276	QSLF-1/8-8-B	1/8" BSPP	8 mm	£4.93
FES153275	QSLF-1/4-6-B	1/4" BSPP	6 mm	£4.49
FES153277	QSLF-1/4-8-B	1/4" BSPP	8 mm	£5.15
FES153279	QSLF-1/4-10-B	1/4" BSPP	10 mm	£6.79
FES153278	QSLF-3/8-8-B	3/8" BSPP	8 mm	£5.36
FES153280	QSLF-3/8-10-B	3/8" BSPP	10 mm	£6.92

QSL – 360° SWIVEL ELBOW

BSPT MALE WITH EXTERNAL HEX
SOLD IN PACKS OF 10



3130

PART NUMBER	TYPE	THREAD	TUBE OD	PRICE each
FES153045	QSL-1/8-4	1/8" BSPT	4 mm	£2.62
FES153046	QSL-1/8-6	1/8" BSPT	6 mm	£2.73
FES153048	QSL-1/8-8	1/8" BSPT	8 mm	£3.17
FES190658	QSL-1/8-10	1/8" BSPT	10 mm	£4.28
FES190659	QSL-1/4-4	1/4" BSPT	4 mm	£2.94
FES153047	QSL-1/4-6	1/4" BSPT	6 mm	£3.01
FES153049	QSL-1/4-8	1/4" BSPT	8 mm	£3.28
FES153051	QSL-1/4-10	1/4" BSPT	10 mm	£4.43
FES164981	QSL-1/4-12	1/4" BSPT	12 mm	£4.78
FES190660	QSL-3/8-6	3/8" BSPT	6 mm	£3.86
FES153050	QSL-3/8-8	3/8" BSPT	8 mm	£3.93
FES153052	QSL-3/8-10	3/8" BSPT	10 mm	£4.87
FES153053	QSL-3/8-12	3/8" BSPT	12 mm	£5.42
FES164958	QSL-3/8-16	3/8" BSPT	16 mm	£15.73
FES190661	QSL-1/2-10	1/2" BSPT	10 mm	£6.94
FES153054	QSL-1/2-12	1/2" BSPT	12 mm	£7.72
FES153055	QSL-1/2-16	1/2" BSPT	16 mm	£11.66

QSLV – 360° SWIVEL ELBOW
BSPT MALE WITH EXTERNAL HEX
SOLD IN PACKS OF 10



3130

PART NUMBER	TYPE	THREAD	TUBE OD	PRICE each
FES153086	QSLV-1/8-4	1/8" BSPT	4 mm	£3.62
FES153087	QSLV-1/8-6	1/8" BSPT	6 mm	£3.72
FES153089	QSLV-1/8-8	1/8" BSPT	8 mm	£4.14
FES153088	QSLV-1/4-6	1/4" BSPT	6 mm	£3.99
FES153090	QSLV-1/4-8	1/4" BSPT	8 mm	£4.81
FES153092	QSLV-1/4-10	1/4" BSPT	10 mm	£6.62
FES153091	QSLV-3/8-8	3/8" BSPT	8 mm	£6.04
FES153093	QSLV-3/8-10	3/8" BSPT	10 mm	£7.38
FES153094	QSLV-3/8-12	3/8" BSPT	12 mm	£8.42
FES153095	QSLV-1/2-12	1/2" BSPT	12 mm	£8.63
FES153096	QSLV-1/2-16	1/2" BSPT	16 mm	£15.96

QSL – 360° SWIVEL ELBOW

BSPP MALE WITH EXTERNAL HEX
SOLD IN PACKS OF 10



3130

PART NUMBER	TYPE	THREAD	TUBE OD	PRICE each
FES186116	QSL-G1/8-4	1/8" BSPP	4 mm	£2.92
FES186117	QSL-G1/8-6	1/8" BSPP	6 mm	£3.17
FES186119	QSL-G1/8-8	1/8" BSPP	8 mm	£3.67
FES186118	QSL-G1/4-6	1/4" BSPP	6 mm	£3.46
FES186120	QSL-G1/4-8	1/4" BSPP	8 mm	£3.89
FES186122	QSL-G1/4-10	1/4" BSPP	10 mm	£4.81
FES186351	QSL-G1/4-12	1/4" BSPP	12 mm	£5.36
FES186121	QSL-G3/8-8	3/8" BSPP	8 mm	£4.42
FES186123	QSL-G3/8-10	3/8" BSPP	10 mm	£5.50
FES186124	QSL-G3/8-12	3/8" BSPP	12 mm	£6.00
FES186348	QSL-G3/8-16	3/8" BSPP	16 mm	£17.88
FES186125	QSL-G1/2-12	1/2" BSPP	12 mm	£8.76
FES186126	QSL-G1/2-16	1/2" BSPP	16 mm	£13.08

QSLV – SINGLE BANJO CONNECTOR
BSPP MALE WITH EXTERNAL HEX
SOLD IN PACKS OF 10



3130

PART NUMBER	TYPE	THREAD	TUBE OD	PRICE each
FES190666	QSLV-M5-6	M5	6 mm	£4.35
FES186137	QSLV-G1/8-4	1/8" BSPP	4 mm	£3.95
FES186138	QSLV-G1/8-6	1/8" BSPP	6 mm	£4.19
FES186140	QSLV-G1/8-8	1/8" BSPP	8 mm	£4.79
FES186139	QSLV-G1/4-6	1/4" BSPP	6 mm	£4.54
FES186141	QSLV-G1/4-8	1/4" BSPP	8 mm	£5.42
FES186143	QSLV-G1/4-10	1/4" BSPP	10 mm	£7.50
FES186142	QSLV-G3/8-8	3/8" BSPP	8 mm	£6.62
FES186144	QSLV-G3/8-10	3/8" BSPP	10 mm	£8.37
FES186145	QSLV-G3/8-12	3/8" BSPP	12 mm	£9.26
FES186146	QSLV-G1/2-12	1/2" BSPP	12 mm	£9.52
FES186147	QSLV-G1/2-16	1/2" BSPP	16 mm	£17.49



QS SERIES QUICK STAR – STANDARD PUSH-IN FITTINGS

QST – 360° SWIVEL TEE
BSPT MALE WITH EXTERNAL HEX
SOLD IN PACKS OF 10



3130

PART NUMBER	TYPE	THREAD	TUBE OD	PRICE each
FES153106	QST-1/8-4	1/8" BSPT	4 mm	£4.05
FES153107	QST-1/8-6	1/8" BSPT	6 mm	£4.64
FES153109	QST-1/8-8	1/8" BSPT	8 mm	£5.87
FES190667	QST-1/8-10	1/8" BSPT	10 mm	£7.31
FES190668	QST-1/4-4	1/4" BSPT	4 mm	£4.83
FES153108	QST-1/4-6	1/4" BSPT	6 mm	£5.08
FES153110	QST-1/4-8	1/4" BSPT	8 mm	£5.94
FES153112	QST-1/4-10	1/4" BSPT	10 mm	£7.51
FES190669	QST-1/4-12	1/4" BSPT	12 mm	£9.86
FES190670	QST-3/8-6	3/8" BSPT	6 mm	£6.08
FES153111	QST-3/8-8	3/8" BSPT	8 mm	£6.16
FES153113	QST-3/8-10	3/8" BSPT	10 mm	£8.04
FES153114	QST-3/8-12	3/8" BSPT	12 mm	£9.80
FES164959	QST-3/8-16	3/8" BSPT	16 mm	£22.18
FES190672	QST-1/2-10	1/2" BSPT	10 mm	£10.39
FES153115	QST-1/2-12	1/2" BSPT	12 mm	£12.23
FES153116	QST-1/2-16	1/2" BSPT	16 mm	£16.73

QSF – STRAIGHT
BSPP FEMALE WITH EXTERNAL HEX
SOLD IN PACKS OF 10



3130

PART NUMBER	TYPE	THREAD	TUBE OD	PRICE each
FES153022	QSF-1/8-4-B	1/8" BSPP	4 mm	£3.28
FES153023	QSF-1/8-6-B	1/8" BSPP	6 mm	£3.35
FES153025	QSF-1/8-8-B	1/8" BSPP	8 mm	£3.93
FES190650	QSF-1/4-4-B	1/4" BSPP	4 mm	£3.61
FES153024	QSF-1/4-6-B	1/4" BSPP	6 mm	£3.65
FES153026	QSF-1/4-8-B	1/4" BSPP	8 mm	£4.05
FES153028	QSF-1/4-10-B	1/4" BSPP	10 mm	£4.49
FES190651	QSF-1/4-12-B	1/4" BSPP	12 mm	£4.48
FES190652	QSF-3/8-6-B	3/8" BSPP	6 mm	£4.78
FES153027	QSF-3/8-8-B	3/8" BSPP	8 mm	£4.43
FES153029	QSF-3/8-10-B	3/8" BSPP	10 mm	£4.64
FES153030	QSF-3/8-12-B	3/8" BSPP	12 mm	£5.03
FES190653	QSF-1/2-12-B	1/2" BSPP	12 mm	£8.49
FES190654	QSF-1/2-16-B	1/2" BSPP	16 mm	£15.34

QST – EQUAL TEE
SOLD IN PACKS OF 10



3130

PART NUMBER	TYPE	TUBE OD	PRICE each
FES153128	QST-4	4 mm	£3.99
FES153129	QST-6	6 mm	£4.15
FES153130	QST-8	8 mm	£4.94
FES153131	QST-10	10 mm	£7.16
FES153132	QST-12	12 mm	£7.88
FES153133	QST-16	16 mm	£15.61

QSY – EQUAL 'Y'
SOLD IN PACKS OF 10



3130

PART NUMBER	TYPE	TUBE OD	PRICE each
FES153148	QSY-4	4 mm	£4.05
FES153149	QSY-6	6 mm	£5.03
FES153150	QSY-8	8 mm	£6.00
FES153151	QSY-10	10 mm	£6.87
FES153152	QSY-12	12 mm	£8.29
FES130609	QSY-16	16 mm	£20.54

QST – REDUCING TEE
SOLD IN PACKS OF 10



3130

PART NUMBER	TYPE	TUBE OD	TUBE OD	PRICE each
FES153134	QST-6-4	6 mm	4 mm	£3.93
FES130613	QST-8-4	8 mm	4 mm	£5.87
FES153135	QST-8-6	8 mm	8 mm	£4.49
FES130614	QST-10-6	10 mm	6 mm	£6.62
FES153136	QST-10-8	10 mm	8 mm	£5.08
FES130615	QST-12-8	12 mm	8 mm	£9.47
FES153137	QST-12-10	12 mm	10 mm	£7.02
FES130616	QST-16-12	16 mm	12 mm	£17.75

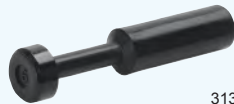
QSY – REDUCING 'Y'
SOLD IN PACKS OF 10



3130

PART NUMBER	TYPE	TUBE OD	TUBE OD	PRICE each
FES190673	QSY-M5-4	M5	4 mm	£4.63
FES190674	QSY-M5-6	M5	6 mm	£4.92
FES153153	QSY-6-4	6 mm	4 mm	£4.81
FES130610	QSY-8-4	8 mm	4 mm	£6.08
FES153154	QSY-8-6	8 mm	6 mm	£5.66
FES130611	QSY-10-6	10 mm	6 mm	£7.03
FES153155	QSY-10-8	10 mm	8 mm	£6.58
FES130612	QSY-12-8	12 mm	8 mm	£9.54
FES153156	QSY-12-10	12 mm	10 mm	£7.59
FES190708	QSY-16-12	16 mm	12 mm	£9.81

QSC-H – BLANKING PLUG
SOLD IN PACKS OF 10



3130

PART NUMBER	TYPE	TUBE OD	PRICE each
FES153267	QSC-4H	4 mm	£1.08
FES153268	QSC-6H	6 mm	£1.08
FES153269	QSC-8H	8 mm	£1.21
FES153270	QSC-10H	10 mm	£1.47
FES153271	QSC-12H	12 mm	£1.61
FES153272	QSC-16H	16 mm	£1.91

QSS – BULKHEAD CONNECTOR
SOLD IN PACKS OF 10



3130

PART NUMBER	TYPE	TUBE OD	PRICE each
FES153157	QSS-4	4 mm	£3.99
FES153158	QSS-6	6 mm	£4.64
FES153159	QSS-8	8 mm	£5.42
FES153160	QSS-10	10 mm	£7.59
FES153161	QSS-12	12 mm	£10.30



QS SERIES QUICK STAR – STANDARD PUSH-IN FITTINGS



QS-L – PLUG IN ELBOW
SOLD IN PACKS OF 10

3130

PART NUMBER	TYPE	TUBE OD	TUBE OD	PRICE each
FES153065	QSL-4HL	4 mm	4 mm	£4.24
FES153066	QSL-6HL	6 mm	6 mm	£4.72
FES153067	QSL-8HL	8 mm	8 mm	£5.22
FES153068	QSL-10HL	10 mm	10 mm	£6.19
FES153069	QSL-12HL	12 mm	12 mm	£7.27



QS-Y – MALE Y
SOLD IN PACKS OF 10

3130

PART NUMBER	TYPE	THREAD	TUBE OD	PRICE each
FES153138	QSY-1/8-4	1/8" BSPT	4 mm	£5.42
FES153139	QSY-1/8-6	1/8" BSPT	6 mm	£7.38
FES153141	QSY-1/8-8	1/8" BSPT	8 mm	£8.35
FES190675	QSY-1/4-4	1/4" BSPT	4 mm	£6.47
FES153140	QSY-1/4-6	1/4" BSPT	6 mm	£7.79
FES153142	QSY-1/4-8	1/4" BSPT	8 mm	£9.01
FES153144	QSY-1/4-10	1/4" BSPT	10 mm	£10.30
FES153143	QSY-3/8-8	3/8" BSPT	8 mm	£9.62
FES153145	QSY-3/8-10	3/8" BSPT	10 mm	£10.66
FES153146	QSY-3/8-12	3/8" BSPT	12 mm	£11.02
FES153147	QSY-1/2-12	1/2" BSPT	12 mm	£11.46



QS-L – REDUCING PLUG IN ELBOW
SOLD IN PACKS OF 10

3130

PART NUMBER	TYPE	TUBE OD	TUBE OD	PRICE each
FES153061	QSL-6H-4	6 mm	4 mm	£3.41
FES153062	QSL-8H-6	8 mm	6 mm	£3.67
FES153063	QSL-10H-8	10 mm	8 mm	£5.28
FES153064	QSL-12H-10	12 mm	10 mm	£6.04



QSLL – EXTENDED MALE ELBOW
SOLD IN PACKS OF 10

3130

PART NUMBER	TYPE	THREAD	TUBE OD	PRICE each
FES153076	QSL-1/8-4	1/8" BSPT	4 mm	£3.65
FES153077	QSL-1/8-6	1/8" BSPT	6 mm	£3.99
FES153079	QSL-1/8-8	1/8" BSPT	8 mm	£4.49
FES190662	QSL-1/4-4	1/4" BSPT	4 mm	£3.93
FES153078	QSL-1/4-6	1/4" BSPT	6 mm	£4.24
FES153080	QSL-1/4-8	1/4" BSPT	8 mm	£4.58
FES153082	QSL-1/4-10	1/4" BSPT	10 mm	£7.10
FES190663	QSL-3/8-6	3/8" BSPT	6 mm	£6.00
FES153081	QSL-3/8-8	3/8" BSPT	8 mm	£6.52
FES153083	QSL-3/8-10	3/8" BSPT	10 mm	£8.50
FES153084	QSL-3/8-12	3/8" BSPT	12 mm	£9.56
FES190664	QSL-1/2-10	1/2" BSPT	10 mm	£11.16
FES153085	QSL-1/2-12	1/2" BSPT	12 mm	£12.43

QSYL – MALE 90° PUSH IN Y FITTING
SOLD IN PACKS OF 10

3130

PART NUMBER	TYPE	THREAD	TUBE OD	PRICE each
FES153172	QSYL-1/8-4	1/8" BSPT	4 mm	£4.63
FES153173	QSYL-1/8-6	1/8" BSPT	6 mm	£5.02
FES153175	QSYL-1/8-8	1/8" BSPT	8 mm	£5.51
FES153174	QSYL-1/4-6	1/4" BSPT	6 mm	£5.25
FES153176	QSYL-1/4-8	1/4" BSPT	8 mm	£5.71
FES153178	QSYL-1/4-10	1/4" BSPT	10 mm	£7.03
FES153177	QSYL-3/8-8	3/8" BSPT	8 mm	£6.09
FES153179	QSYL-3/8-10	3/8" BSPT	10 mm	£7.47
FES153180	QSYL-3/8-12	3/8" BSPT	12 mm	£8.49
FES153181	QSYL-1/2-12	1/2" BSPT	12 mm	£8.87



QSC – PUSH IN CAP
SOLD IN PACKS OF 10

3130

PART NUMBER	TUBE OD	PRICE each
FES153262	4 mm	£1.37
FES153263	6 mm	£1.53
FES153264	8 mm	£1.67
FES153265	10 mm	£1.91
FES153266	12 mm	£2.13

QSTL – MALE RUN TEE
SOLD IN PACKS OF 10

3130

PART NUMBER	TYPE	THREAD	TUBE OD	PRICE each
FES153117	QSTL-1/8-4	1/8" BSPT	4 mm	£4.24
FES153118	QSTL-1/8-6	1/8" BSPT	6 mm	£4.81
FES153120	QSTL-1/8-8	1/8" BSPT	8 mm	£6.00
FES153119	QSTL-1/4-6	1/4" BSPT	6 mm	£5.28
FES153121	QSTL-1/4-8	1/4" BSPT	8 mm	£6.08
FES153123	QSTL-1/4-10	1/4" BSPT	10 mm	£7.86
FES153122	QSTL-3/8-8	3/8" BSPT	8 mm	£6.62
FES153124	QSTL-3/8-10	3/8" BSPT	10 mm	£8.50
FES153125	QSTL-3/8-12	3/8" BSPT	12 mm	£10.37
FES153126	QSTL-1/2-12	1/2" BSPT	12 mm	£11.86
FES153127	QSTL-1/2-16	1/2" BSPT	16 mm	£16.73





QS SERIES QUICK STAR – STANDARD PUSH-IN FITTINGS



GR-QS
ONE-WAY FLOW CONTROL VALVE

3130

PART NUMBER	TYPE	TUBE OD	PRICE
FES193965	GR-QS-3	3 mm	£16.67
FES193967	GR-QS-4	4 mm	£19.55
FES193969	GR-QS-6	6 mm	£19.55
FES193970	GR-QS-8	8 mm	£24.72



GRLA-QS-MF
ONE-WAY FLOW CONTROL VALVE
FOR EXHAUST AIR

3130

PART NUMBER	TYPE	THREAD	TUBE OD	PRICE
FES537075	GRLA-1/8-QS-6-MF-D	1/8"	6 mm	£15.47
FES537076	GRLA-1/8-QS-8-MF-D	1/8"	8 mm	£15.47



GRLA-QS
ONE-WAY FLOW CONTROL VALVE
FOR EXHAUST AIR

3130

PART NUMBER	TYPE	THREAD	TUBE OD	PRICE
FES193137	GRLA-M5-QS-3-D	M5	3 mm	£13.94
FES193138	GRLA-M5-QS-4-D	M5	4 mm	£13.94
FES193139	GRLA-M5-QS-6-D	M5	6 mm	£13.94
FES193142	GRLA-1/8-QS-3-D	1/8"	3 mm	£13.94
FES193143	GRLA-1/8-QS-4-D	1/8"	4 mm	£13.94
FES193144	GRLA-1/8-QS-6-D	1/8"	6 mm	£13.94
FES193145	GRLA-1/8-QS-8-D	1/8"	8 mm	£13.94
FES193146	GRLA-1/4-QS-6-D	1/4"	6 mm	£15.47
FES193147	GRLA-1/4-QS-8-D	1/4"	8 mm	£15.47
FES193148	GRLA-1/4-QS-10-D	1/4"	10 mm	£15.47
FES193151	GRLA-3/8-QS-10-D	3/8"	10 mm	£20.79
FES193149	GRLA-3/8-QS-6-D	3/8"	6 mm	£20.79
FES193150	GRLA-3/8-QS-8-D	3/8"	8 mm	£20.79
FES193152	GRLA-1/2-QS-12-D	1/2"	12 mm	£31.70

PILOTED CHECK VALVE

3130

PART NUMBER	TYPE	THREAD	TUBE OD	PRICE
FES530029	HGL-M5-B	M5		£33.48
FES530030	HGL-1/8-B	1/8"		£38.53
FES530031	HGL-1/4-B	1/4"		£47.02
FES530032	HGL-3/8-B	3/8"		£56.03
FES530033	HGL-1/2-B	1/2"		£64.02



GRLA-QS-RS
ONE-WAY FLOW CONTROL VALVE
FOR EXHAUST AIR

3130

PART NUMBER	TYPE	THREAD	TUBE OD	PRICE
FES197576	GRLA-M5-QS-3-RS-D	M5	3 mm	£16.23
FES197577	GRLA-M5-QS-4-RS-D	M5	4 mm	£16.23
FES197578	GRLA-M5-QS-6-RS-D	M5	6 mm	£16.23
FES197579	GRLA-1/8-QS-3-RS-D	1/8"	3 mm	£16.23
FES197580	GRLA-1/8-QS-4-RS-D	1/8"	4 mm	£16.23
FES197581	GRLA-1/8-QS-6-RS-D	1/8"	6 mm	£16.23
FES534337	GRLA-1/8-QS-8-RS-D	1/8"	8 mm	£16.23
FES534338	GRLA-1/4-QS-6-RS-D	1/4"	6 mm	£17.88
FES534339	GRLA-1/4-QS-8-RS-D	1/4"	8 mm	£17.88
FES534340	GRLA-1/4-QS-10-RS-D	1/4"	10 mm	£17.88
FES534343	GRLA-3/8-QS-10-RS-D	3/8"	10 mm	£23.84
FES534341	GRLA-3/8-QS-6-RS-D	3/8"	6 mm	£23.84
FES534342	GRLA-3/8-QS-8-RS-D	3/8"	8 mm	£23.84
FES534344	GRLA-1/2-QS-12-RS-D	1/2"	12 mm	£52.48

PILOTED CHECK VALVE

3130

PART NUMBER	TYPE	THREAD	TUBE OD	PRICE
FES530038	HGL-M5-QS-4	M5	4 mm	£33.48
FES530039	HGL-1/8-QS-4	1/8"	4 mm	£38.53
FES530040	HGL-1/8-QS-6	1/8"	6 mm	£38.53
FES530041	HGL-1/4-QS-8	1/4"	8 mm	£47.02
FES530042	HGL-1/4-QS-10	1/4"	10 mm	£47.02
FES530043	HGL-3/8-QS-8	3/8"	8 mm	£56.03
FES530044	HGL-3/8-QS-10	3/8"	10 mm	£56.03
FES530045	HGL-1/2-QS-12	1/2"	12 mm	£64.02



QSM SERIES QUICK STAR – MINI PUSH-IN FITTINGS

FEATURES

- Simple and reliable connection and release
- Wide range of variants: standard, mini size, metal, stainless steel, flame retardant with R and G metric thread
- Types in accordance with ATEX directive for potentially explosive atmospheres

SPECIFICATIONS

Pressure range (bar)	-0.95 to +14
Temperature range	-10°C to +80°C
MATERIALS	
Release ring	Polyacetate
Seal	Nitrile rubber
Body	Polybuteneterephthalate, nickel plated brass
Tube retaining claw	High alloy stainless steel
Threaded coupling	Nickel plated brass

QSM – STRAIGHT M MALE WITH EXTERNAL HEX SOLD IN PACKS OF 10



3130

PART NUMBER	TYPE	THREAD	TUBE OD	PRICE each
FES153301	QSM-M3-3	M3	3 mm	£3.93
FES153303	QSM-M3-4	M3	4 mm	£4.23
FES153302	QSM-M5-3	M5	3 mm	£2.08
FES153304	QSM-M5-4	M5	4 mm	£2.19
FES153306	QSM-M5-6	M5	6 mm	£2.26
FES132600	QSM-M6-6	M6	6 mm	£2.50

QSM – STRAIGHT SOLD IN PACKS OF 10



3130

PART NUMBER	TYPE	TUBE OD	PRICE each
FES153323	QSM-3	3 mm	£2.92
FES153324	QSM-4	4 mm	£2.92
FES153325	QSM-6	6 mm	£3.06

QSM – STRAIGHT BSPT MALE WITH EXTERNAL HEX SOLD IN PACKS OF 10



3130

PART NUMBER	TYPE	THREAD	TUBE OD	PRICE each
FES153305	QSM-1/8-4	1/8" BSPT	4 mm	£1.76
FES153307	QSM-1/8-6	1/8" BSPT	6 mm	£1.86

QSM – REDUCING STRAIGHT SOLD IN PACKS OF 10



3130

PART NUMBER	TYPE	TUBE OD	TUBE OD	PRICE each
FES153326	QSM-4-3	4 mm	3 mm	£3.06
FES153327	QSM-6-4	6 mm	4 mm	£3.16

QSM-I – STRAIGHT BSPT MALE WITH INTERNAL HEX SOLD IN PACKS OF 10

Image shown with BSPP male thread



3130

PART NUMBER	TYPE	THREAD	TUBE OD	PRICE each
FES153316	QSM-1/8-4-I	1/8" BSPT	4 mm	£2.25
FES153318	QSM-1/8-6-I	1/8" BSPT	6 mm	£2.44

QSML – 360° SWIVEL ELBOW MALE THREAD WITH EXTERNAL HEX SOLD IN PACKS OF 10



3130

PART NUMBER	TYPE	THREAD	TUBE OD	PRICE each
FES153330	QSML-M3-3	M3	3 mm	£4.58
FES153332	QSML-M3-4	M3	4 mm	£4.58
FES153331	QSML-M5-3	M5	3 mm	£2.77
FES153333	QSML-M5-4	M5	4 mm	£3.17
FES153335	QSML-M5-6	M5	6 mm	£3.17
FES186352	QSML-M7-4	M7	4 mm	£3.89
FES186353	QSML-M7-6	M7	6 mm	£3.89

QSM-I – STRAIGHT BSPP MALE WITH INTERNAL HEX SOLD IN PACKS OF 10



3130

PART NUMBER	TYPE	THREAD	TUBE OD	PRICE each
FES186266	QSM-G1/8-4-I	1/8" BSPP	4 mm	£2.49
FES186267	QSM-G1/8-6-I	1/8" BSPP	6 mm	£2.70

QSML – 360° SWIVEL ELBOW BSPT MALE WITH EXTERNAL HEX SOLD IN PACKS OF 10



3130

PART NUMBER	TYPE	THREAD	TUBE OD	PRICE each
FES153334	QSML-1/8-4	1/8" BSPT	4 mm	£2.70
FES153336	QSML-1/8-6	1/8" BSPT	6 mm	£2.67

QSM-I-R – STRAIGHT, ROUND RELEASE RING METRIC MALE THREAD WITH EXTERNAL HEX SOLD IN PACKS OF 10

Image shown with internal hex



3130

PART NUMBER	TYPE	THREAD	TUBE OD	PRICE each
FES133001	QSM-M3-3-I-R	M3	3 mm	£3.26
FES133002	QSM-M3-4-I-R	M3	4 mm	£3.31
FES133004	QSM-M5-4-I-R	M5	4 mm	£2.21
FES133005	QSM-M5-6-I-R	M5	6 mm	£2.40
FES133007	QSM-M7-6-I-R	M7	6 mm	£2.21

QSM – 360° SWIVEL ELBOW SOLD IN PACKS OF 10



3130

PART NUMBER	TYPE	THREAD	TUBE OD	PRICE each
FES186268	QSML-G1/8-4	1/8" BSPP	4 mm	£3.08
FES186269	QSML-G1/8-6	1/8" BSPP	6 mm	£3.08



QSM SERIES QUICK STAR – MINI PUSH-IN FITTINGS



QSM – MINI PLUG IN REDUCER
SOLD IN PACKS OF 10

3130

PART NUMBER	TYPE	TUBE OD	TUBE OD	PRICE each
FES153328	QSM-4H-3	4 mm	3 mm	£2.92
FES153329	QSM-6H-4	6 mm	4 mm	£3.06



QSMY – MINI PUSH IN Y CONNECTOR
SOLD IN PACKS OF 10

3130

PART NUMBER	TYPE	TUBE OD	TUBE OD	PRICE each
FES153373	QSMY-4-3	4 mm	3 mm	£4.63
FES153374	QSMY-6-4	6 mm	4 mm	£4.58



QSM – MINI HEX MALE STUD
SOLD IN PACKS OF 10

3130

PART NUMBER	TYPE	THREAD	TUBE OD	PRICE each
FES186264	QSM-G1/8-4	1/8" BSPP	4 mm	£2.06
FES186265	QSM-G1/8-6	1/8" BSPP	6 mm	£2.13

QSM – MINI MALE STUD WITH ROUND BODY
SOLD IN PACKS OF 10



3130

PART NUMBER	TYPE	THREAD	TUBE OD	PRICE each
FES153312	QSM-M3-3-I	M3	3 mm	£3.17
FES153314	QSM-M3-4-I	M3	4 mm	£3.23
FES153313	QSM-M5-3-I	M5	3 mm	£2.15
FES153315	QSM-M5-4-I	M5	4 mm	£2.11
FES153317	QSM-M5-6-I	M5	6 mm	£2.37
FES153319	QSM-M7-4-I	M7	4 mm	£1.91
FES153321	QSM-M7-6-I	M7	6 mm	£2.11



QSML – MINI EQUAL ELBOW
SOLD IN PACKS OF 10

3130

PART NUMBER	TYPE	TUBE OD	TUBE OD	PRICE each
FES153346	QSML-3H	3 mm	3 mm	£2.70
FES153347	QSML-4H	4 mm	4 mm	£2.77
FES153348	QSML-6H	6 mm	6 mm	£3.17



QSML – MINI REDUCING ELBOW
SOLD IN PACKS OF 10

3130

PART NUMBER	TYPE	TUBE OD	TUBE OD	PRICE each
FES153349	QSML-4H-3	4 mm	3 mm	£2.99
FES153350	QSML-6H-4	6 mm	4 mm	£3.17

BSP MALE BLANKING PLUG
SOLD IN PACKS OF 10



3110

PART NUMBER	TYPE	THREAD	PRICE each
FES3568	B-1/8	1/8"	£1.04
FES3569	B-1/4	1/4"	£1.26
FES3570	B-3/8	3/8"	£1.77
FES3571	B-1/2	1/2"	£2.35
FES3572	B-3/4	3/4"	£4.04
FES5763	B-1	1"	£5.61

METRIC BLANKING PLUG
SOLD IN PACKS OF 10



3110

PART NUMBER	TYPE	THREAD	PRICE each
FES30979	B-M3-S9	M3	£1.94
FES3843	B-M5	M5	£1.04
FES174308	B-M5-B	M5	£0.94
FES174309	B-M7	M7	£1.04



QSMT – MINI PUSH IN TEE CONNECTOR
SOLD IN PACKS OF 10

3130

PART NUMBER	TYPE	TUBE OD	TUBE OD	PRICE each
FES153368	QSMT-4-3	4 mm	3 mm	£3.89
FES153369	QSMT-6-4	6 mm	4 mm	£3.93

QSM SERIES QUICK STAR – MINI PUSH-IN FITTINGS



QSML – EQUAL ELBOW

SOLD IN PACKS OF 10



3130

PART NUMBER	TYPE	TUBE OD	PRICE each
FES153343	QSML-3	3 mm	£2.92
FES153344	QSML-4	4 mm	£2.92
FES153345	QSML-6	6 mm	£3.06

QSMT – 360° SWIVEL TEE

BSPT MALE
WITH EXTERNAL HEX
SOLD IN PACKS OF 10



3130

PART NUMBER	TYPE	THREAD	TUBE OD	PRICE each
FES153355	QSMT-1/8-4	1/8" BSPT	4 mm	£4.10
FES153357	QSMT-1/8-6	1/8" BSPT	6 mm	£4.14

QSMT – 360° SWIVEL TEE

METRIC MALE
WITH EXTERNAL HEX
SOLD IN PACKS OF 10



3130

PART NUMBER	TYPE	THREAD	TUBE OD	PRICE each
FES153351	QSMT-M3-3	M3	3 mm	£5.81
FES153353	QSMT-M3-4	M3	4 mm	£6.04
FES153354	QSMT-M5-4	M5	4 mm	£4.23
FES153356	QSMT-M5-6	M5	6 mm	£4.72

QSMT – EQUAL TEE

SOLD IN PACKS OF 10



3130

PART NUMBER	TYPE	TUBE OD	PRICE each
FES153365	QSMT-3	3 mm	£3.75
FES153366	QSMT-4	4 mm	£3.81
FES153367	QSMT-6	6 mm	£3.93

QSMY – EQUAL 'Y'

SOLD IN PACKS OF 10



3130

PART NUMBER	TYPE	TUBE OD	PRICE each
FES153370	QSMY-3	3 mm	£3.62
FES153371	QSMY-4	4 mm	£4.05
FES153372	QSMY-6	6 mm	£4.43

QSMS – BULKHEAD CONNECTOR

SOLD IN PACKS OF 10



3130

PART NUMBER	TYPE	TUBE OD	PRICE each
FES153375	QSMS-3	3 mm	£4.24
FES153376	QSMS-4	4 mm	£4.43
FES153377	QSMS-6	6 mm	£4.58

QSLV SERIES QUICK STAR – MULTIPLE DISTRIBUTORS



FEATURES

- Easy to insert tubing
- Easy to release
- Up to 6 outlets
- Rotatable 360°
- Types in accordance with ATEX directive for potentially explosive atmospheres

SPECIFICATIONS

Pressure range (bar)	-0.95 to +14
Temperature range	-10°C to +80°C

MATERIALS

Release ring	POM (colour: blue)
Seal	Nitrile rubber
Body	PBT
Tube clamping segment	High alloy stainless steel
Threaded coupling	Nickel plated brass

QSLV2 – 360° SWIVEL DOUBLE ELBOW

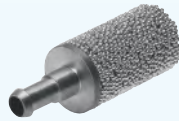
BSPT MALE
WITH EXTERNAL HEX
SOLD IN PACKS OF 10



3130

PART NUMBER	TYPE	THREAD	TUBE OD	PRICE each
FES153211	QSLV2-1/8-4	1/8" BSPT	4 mm	£9.17
FES153212	QSLV2-1/8-6	1/8" BSPT	6 mm	£9.52
FES153214	QSLV2-1/8-8	1/8" BSPT	8 mm	£10.84
FES153213	QSLV2-1/4-6	1/4" BSPT	6 mm	£10.19
FES153215	QSLV2-1/4-8	1/4" BSPT	8 mm	£11.16
FES153217	QSLV2-1/4-10	1/4" BSPT	10 mm	£12.23

U / UC / UO SERIES SILENCERS



SINTERED METAL SILENCER

3130

PART NUMBER	TYPE	TUBE ID	NOISE LEVEL	PRICE
FES4646	U-PK-3	3 mm	< 70 dB(A)	£3.27
FES4932	U-PK-4	4 mm	< 74 dB(A)	£3.27



**PUSH-IN SLEEVE SILENCER
FOR QS, QUICK STAR FITTINGS**

3130

PART NUMBER	TYPE	SLEEVE OD	PRICE
FES165005	UC-QS-3H	3 mm	£5.38
FES165006	UC-QS-4H	4 mm	£5.38
FES165007	UC-QS-6H	6 mm	£5.38
FES175611	UC-QS-8H	8 mm	£5.52
FES526475	UC-QS-10H	10 mm	£10.35



**POLYMER SILENCER
MALE THREAD**

3130

PART NUMBER	TYPE	THREAD	NOISE LEVEL	PRICE
FES2307	U-1/8	1/8" BSPP	77 dB(A)	£3.76
FES2316	U-1/4	1/4" BSPP	77 dB(A)	£4.73
FES2309	U-3/8	3/8" BSPP	82 dB(A)	£9.37
FES2310	U-1/2	1/2" BSPP	80 dB(A)	£13.31
FES2311	U-3/4	3/4" BSPP	83 dB(A)	£21.78
FES2312	U-1	1" BSPP	84 dB(A)	£37.50



**SILENCER - MALE THREAD
FOR CPE SOLENOID VALVES**

3130

PART NUMBER	TYPE	THREAD	NOISE LEVEL	PRICE
FES165003	UC-M5	M5	60 dB(A)	£5.38
FES161418	UC-M7	M7	58 dB(A)	£5.38
FES161419	UC-1/8	1/8" BSPP	59 dB(A)	£5.46
FES165004	UC-1/4	1/4" BSPP	60 dB(A)	£6.74



**DIE-CAST METAL SILENCER
MALE THREAD**

3130

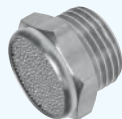
PART NUMBER	TYPE	THREAD	NOISE LEVEL	PRICE
FES6841	U-1/8-B	1/8" BSPP	< 74 dB(A)	£7.72
FES6842	U-1/4-B	1/4" BSPP	< 80 dB(A)	£8.28
FES6843	U-3/8-B	3/8" BSPP	< 80 dB(A)	£11.30
FES6844	U-1/2-B	1/2" BSPP	< 80 dB(A)	£13.79
FES6845	U-3/4-B	3/4" BSPP	< 81 dB(A)	£22.78
FES151990	U-1-B	1" BSPP	< 80 dB(A)	£27.02



**SILENCER - MALE THREAD
FOR VACUUM GENERATORS
VN-T2/T3**

3130

PART NUMBER	TYPE	THREAD	PRICE
FES197582	UO-M7	M7	£7.45
FES197583	UO-1/8	1/8" BSPP	£8.11
FES197584	UO-1/4	1/4" BSPP	£9.44



**METAL SILENCER
SHORT DESIGN**

3150

PART NUMBER	TYPE	THREAD	NOISE LEVEL	PRICE
FES1206621	AMTE-M-H-M5	M5	71 dB (A)	£1.22
FES1206622	AMTE-M-H-G18	1/8"	92 dB (A)	£1.40
FES1206623	AMTE-M-H-G14	1/4"	95 dB (A)	£1.70
FES1206624	AMTE-M-H-G38	3/8"	92 dB (A)	£3.17
FES1206625	AMTE-M-H-G12	1/2"	92 dB (A)	£4.39



SILENCER

3150

PART NUMBER	TYPE	THREAD	NOISE LEVEL	PRICE
FES1205858	AMTE-M-LH-M5	M5	72 dB(A)	£2.08
FES1205860	AMTE-M-LH-G18	1/8" BSPP	76 dB(A)	£2.44
FES1205861	AMTE-M-LH-G14	1/4" BSPP	83 dB(A)	£3.17
FES1205862	AMTE-M-LH-G38	3/8" BSPP	82 dB(A)	£5.22
FES1205863	AMTE-M-LH-G12	1/2" BSPP	88 dB(A)	£7.91