

E.MC PNEUMATIC PRODUCTS

New
Additions



328

E.MC
EA & E Series Filter, Regulator
and Lubricator Assemblies



333

E.MC
E Series Shut-Off Valves,
Auto-Drains & Accessories



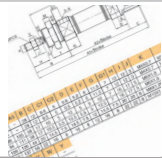
334

E.MC
ISO 6432 Standard Mini Cylinders



335

E.MC
ISO 6432 Standard Mini Cylinder
Accessories



336

E.MC
IA and IAC Series Cylinder
Dimensional Drawings



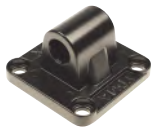
337

E.MC
ISO 15552 VDMA
Standard Cylinders



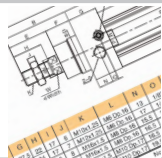
338

E.MC
ISO 15552 VDMA
Standard Profile Cylinders



339

E.MC
Cylinder Accessories



341

E.MC
FVBC and VBC Series Cylinder
Dimensional Drawings



342

E.MC
SQN Series Compact Cylinders

E.MC PNEUMATIC PRODUCTS



343

E.MC
ISO 21287 SF Series
Compact Cylinders



344

E.MC
EXS and SGM Series
Guided Cylinders



345

E.MC
Silencers



347

E.MC
3/2, 5/2 and 5/3 Pneumatically
Operated Valves



348

E.MC
3/2, 5/2 and 5/3 Solenoid Valves

New
Additions



349

E.MC
Solenoid Valve Accessories



351

E.MC
Manual and Pneumatically
Operated Valves



352

E.MC
3/2, 5/2 and 5/3 Manual Valves



353

E.MC
3/2 and 5/2 Manual and
Mechanical Valves

EA SERIES
EAR REGULATORS
SPECIFICATIONS

Max. working pressure	10 bar
Working temperature	-5°C to +60°C (no freezing)
Working medium	Clean air (after 40 µm filtration)
Max. inlet pressure	15 bar
Adjustable pressure range	1.5 to 9 bar

PANEL CUT OUT HOLE

BODY SIZE	Ø	MAX. PLATE THICKNESS
2000	31.5 mm	3.5 mm
3000	36.5 mm	3.0 mm
4000	52.5 mm	3.0 mm

EAR SERIES INTEGRAL GAUGE AND BRACKET


3650

PART NUMBER	BODY SIZE	PORT SIZE	FLOW RATE (L/MIN)	PRICE
EM-EAR2000-02	2000	1/4"	1300	£32.19
EM-EAR3000-03	3000	3/8"	2750	£31.66
EM-EAR4000-04	4000	1/2"	2750	£56.99

EAF FILTER
SPECIFICATIONS

Max. working pressure	10 bar
Working temperature	-5°C to +60°C (no freezing)
Filter precision	40 micron
Working medium	Clean air (after 40 µm filtration)
Bowl material	Polycarbonate
Max. inlet pressure	15 bar

EAF SERIES FILTER MANUAL DRAIN WITH BRACKET


3650

PART NUMBER	BODY SIZE	PORT SIZE	FLOW RATE (L/MIN)	PRICE
EM-EAF3000-03	3000	3/8"	2750	£28.45
EM-EAF4000-04	4000	1/2"	2750	£43.49

EAL LUBRICATOR
SPECIFICATIONS

Max. working pressure	0.5 to 10 bar
Working temperature	-5°C to +60°C (no freezing)
Working medium	Clean air (after 40 µm filtration)
Bowl material	Polycarbonate
Max. inlet	15 bar

EAL SERIES LUBRICATOR WITH BRACKET


3650

PART NUMBER	BODY SIZE	PORT SIZE	FLOW RATE (L/MIN)	PRICE
EM-EAL3000-03	3000	3/8"	1800	£29.99
EM-EAL4000-04	4000	1/2"	2250	£42.00

EAW FILTER / REGULATORS
SPECIFICATIONS

Max. working pressure	10 bar
Working temperature	-5°C to +60°C (no freezing)
Filter precision	40 micron
Working medium	Clean air (after 40 µm filtration)
Bowl material	Polycarbonate
Max. inlet pressure	15 bar
Adjustable pressure range	1.5 to 9 bar

PANEL CUT OUT HOLE

BODY SIZE	Ø	MAX. PLATE THICKNESS
2000	31.5 mm	3.5 mm
3000	36.5 mm	3.0 mm
4000	52.5 mm	3.0 mm

EAW SERIES FILTER / REGULATOR MANUAL DRAIN WITH BRACKET


3650

PART NUMBER	BODY SIZE	PORT SIZE	FLOW RATE (L/MIN)	PRICE
EM-EAW2000-02	2000	1/4"	1300	£38.96
EM-EAW3000-03	3000	3/8"	2750	£38.03
EM-EAW4000-04	4000	1/2"	2750	£74.98

EA SERIES
EAC FILTER / REGULATOR / LUBRICATOR
SPECIFICATIONS

Max. working pressure	10 bar
Working temperature	-5°C to +60°C (no freezing)
Filter precision	40 micron
Working medium	Clean air (after 40 µm filtration)
Bowl material	Polycarbonate
Max. inlet pressure	15 bar
Adjustable pressure range	1.5 to 9 bar

New
**EAC SERIES FILTER / REGULATOR / LUBRICATOR
MANUAL DRAIN WITH BRACKET**


3650

PART NUMBER	BODY SIZE	PORT SIZE	FLOW RATE (L/MIN)	PRICE
EM-EAC2010-02	2000	1/4"	1200	£59.98
EM-EAC3010-03	3000	3/8"	2400	£80.96
EM-EAC4010-04	4000	1/2"	1400	£124.74

EA SERIES ACCESSORIES
New
20 TYPE BRACKET


3650

PART NUMBER	FOR USE WITH	PRICE
EM-EAC220	2000 Series	£1.45
EM-EAC320	3000 Series	£2.53
EM-EAC420	4000 Series	£2.45

New
40 TYPE BRACKET


3650

PART NUMBER	FOR USE WITH	PRICE
EM-EAC240	2000 Series	£1.91
EM-EAC340	3000 Series	£2.91
EM-EAC440	4000 Series	£3.53

New
T SERIES COMBINATION BRACKET


3650

PART NUMBER	FOR USE WITH	PRICE
EM-EAC20T	2000 Series	£7.23
EM-EAC30T	3000 Series	£10.92
EM-EAC40T	4000 Series	£14.70

New
SPACER

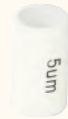

3650

PART NUMBER	FOR USE WITH	PRICE
EM-EA200	2000 Series	£7.85
EM-EA300	3000 Series	£16.53
EM-EA400	4000 Series	£16.91

New
REGULATOR NUT


3650

PART NUMBER	FOR USE WITH	PRICE
EM-EAW2000-016	2000 Series	£0.71
EM-EAW3000-016	3000 Series	£0.75
EM-EAW4000-016	4000 Series	£3.36

New
FILTER ELEMENTS


3650

PART NUMBER	FILTER PRECISION	FOR USE WITH	PRICE
EM-EAW2000-033-2	5 micron	2000 Series	£0.58
EM-EAW3000-033-2	5 micron	3000 Series	£0.58
EM-EAW4000-033-2	5 micron	4000 Series	£0.91
EM-EAW2000-033-1	40 micron	2000 Series	£0.58
EM-EAW3000-033-1	40 micron	3000 Series	£0.58
EM-EAW4000-033-1	40 micron	4000 Series	£0.91

New
SQUARE PRESSURE GAUGE


3650

PART NUMBER	FOR USE WITH	PRICE
EM-EAC20-FB-010-02	2000 Series	£8.56
EM-EAC-FB-010-2	3000 / 4000 Series	£10.38

New
ROUND PRESSURE GAUGE


3650

PART NUMBER	FOR USE WITH	PRICE
EM-EAC-EYZ26	2000 Series	£8.31
EM-EAC-EYZ40	3000 / 4000 Series	£5.40

New
DRAIN UNITS


3650

PART NUMBER	DRAIN TYPE	FOR USE WITH	PRICE
EM-EAF2000-P01	Manual	2000 Series	£2.95
EM-EAF3000-P01	Manual	3000 Series	£10.26
EM-EAF4000-P01	Manual	4000 Series	£14.33
EM-EAF3000-P02	Semi auto	3000 Series	£10.26
EM-EAF4000-P02	Semi auto	4000 Series	£14.33
EM-EAF3000-P03	Auto	3000 Series	£32.40
EM-EAF4000-P03	Auto	4000 Series	£36.84

E SERIES

SPECIFICATIONS

Max. working pressure	10 bar
Working temperature	+5°C to +60°C
Filter precision	5 micron
Bowl material	Polycarbonate – metal bowl guard fitted on sizes 3000 and above
Inlet pressure	15 bar
Adjustable pressure range	0.5 to 8.5 bar
Drain type	Manual drain / auto drain
Type	Non relieving

PANEL CUT OUT HOLE

BODY SIZE	Ø	MAX. PLATE THICKNESS
2000	33.5 mm	3.5 mm
3000	42.5 mm	3.5 mm
4000	52.5 mm	5.0 mm
5000	52.5 mm	5.0 mm

EW and EC series products come complete with gauge and bracket
Flow rates are based on an 8 bar supply pressure and 6.3 bar set pressure

ER REGULATORS



3650

ER SERIES REGULATOR INCLUDES GAUGE AND BRACKET

PART NUMBER	BODY SIZE	PORT SIZE	FLOW RATE (L/MIN)	PRICE
EM-ER2000-01-5	2000	1/8"	1178	£23.17
EM-ER2000-02-5	2000	1/4"	1200	£25.36
EM-ER3000-02-5	3000	1/4"	2112	£35.96
EM-ER3000-03-5	3000	3/8"	2212	£35.96
EM-ER4000-03-5	4000	3/8"	5020	£47.93
EM-ER4000-04-5	4000	1/2"	5312	£51.18
EM-ER5000-06-5	5000	3/4"	6400	£59.90
EM-ER5000-10-5	5000	1"	6600	£59.90

EW FILTER / REGULATORS



3650

EW SERIES FILTER / REGULATOR MANUAL DRAIN

PART NUMBER	BODY SIZE	PORT SIZE	FLOW RATE (L/MIN)	PRICE
EM-EW2000-01-5	2000	1/8"	1078	£33.36
EM-EW2000-02-5	2000	1/4"	1165	£36.10

AUTO DRAIN

EM-EW2000-01D-5	2000	1/8"	1078	£52.04
EM-EW2000-02D-5	2000	1/4"	1165	£52.04

EC FILTER / REGULATOR / LUBRICATORS



3650

EC SERIES FILTER / REGULATOR / LUBRICATOR MANUAL DRAIN

PART NUMBER	BODY SIZE	PORT SIZE	FLOW RATE (L/MIN)	PRICE
EM-EC2010-01-5	2000	1/8"	945	£50.58
EM-EC2010-02-5	2000	1/4"	960	£50.58

AUTO DRAIN

EM-EC2010-01D-5	2000	1/8"	945	£69.27
EM-EC2010-02D-5	2000	1/4"	960	£69.27

EPR PRECISION PRESSURE REGULATOR

SPECIFICATIONS

Max. input pressure	10 bar
Working temperature	-20°C to +70°C
Working medium	Clean air
Adjustable pressure range	See table



EPR SERIES PRECISION PRESSURE REGULATOR WITH PRESSURE GAUGE AND MOUNTING BRACKET



3650

PART NUMBER	BODY SIZE	PORT SIZE	PRESSURE RANGE	PRICE
EM-EPR2000-01M	2000	1/8"	0.1 to 4 bar	£88.19
EM-EPR2000-01H	2000	1/8"	0.1 to 8 bar	£88.19
EM-EPR3000-02M	3000	1/4"	0.1 to 4 bar	£99.03
EM-EPR3000-02H	3000	1/4"	0.1 to 8 bar	£99.03
EM-EPR4000-02M	4000	1/4"	0.1 to 4 bar	£141.77
EM-EPR4000-02H	4000	1/4"	0.1 to 8 bar	£141.77
EM-EPR4000-03M	4000	3/8"	0.1 to 4 bar	£141.77
EM-EPR4000-03H	4000	3/8"	0.1 to 8 bar	£140.19
EM-EPR4000-04M	4000	1/2"	0.1 to 4 bar	£141.77
EM-EPR4000-04H	4000	1/2"	0.1 to 8 bar	£140.19

E SERIES
EC FILTER / REGULATOR / LUBRICATORS
SPECIFICATIONS

Max. working pressure	10 bar
Working temperature	+5°C to +60°C
Filter precision	25 micron
Bowl material	Polycarbonate – metal bowl guard fitted on sizes 3000 and above
Inlet pressure	15 bar
Adjustable pressure range	0.5 to 8.5 bar
Drain type	Manual drain / auto drain



3650

PANEL CUT OUT HOLE

BODY SIZE	Ø	MAX. PLATE THICKNESS
2000	33.5 mm	3.5 mm
3000	42.5 mm	3.5 mm
4000	52.5 mm	5.0 mm
5000	52.5 mm	5.0 mm



3650

EC SERIES FILTER / REGULATOR / LUBRICATOR WITH METAL BOWL GUARD MANUAL DRAIN

PART NUMBER	BODY SIZE	PORT SIZE	FLOW RATE (L/MIN)	PRICE
EM-EC3010-02-5	3000	1/4"	1874	£70.73
EM-EC3010-03-5	3000	3/8"	1956	£70.73
EM-EC4010-03-5	4000	3/8"	4923	£102.21
EM-EC4010-04-5	4000	1/2"	5120	£102.21
EM-EC5010-06-5	5000	3/4"	6000	£146.03
EM-EC5010-10-5	5000	1"	6200	£146.03

EW SERIES FILTER / REGULATOR WITH METAL BOWL GUARD MANUAL DRAIN

PART NUMBER	BODY SIZE	PORT SIZE	FLOW RATE (L/MIN)	PRICE
EM-EW3000-02-5	3000	1/4"	1998	£44.92
EM-EW3000-03-5	3000	3/8"	2177	£44.92
EM-EW4000-03-5	4000	3/8"	5108	£67.35
EM-EW4000-04-5	4000	1/2"	5211	£71.01
EM-EW5000-06-5	5000	3/4"	6200	£93.58
EM-EW5000-10-5	5000	1"	6400	£93.58

AUTO DRAIN

PART NUMBER	BODY SIZE	PORT SIZE	FLOW RATE (L/MIN)	PRICE
EM-EW3000-02D-5	3000	1/4"	1998	£82.34
EM-EW3000-03D-5	3000	3/8"	2177	£82.34
EM-EW4000-03D-5	4000	3/8"	5108	£104.82
EM-EW4000-04D-5	4000	1/2"	5211	£104.82
EM-EW5000-06D-5	5000	3/4"	6200	£131.05
EM-EW5000-10D-5	5000	1"	6400	£131.05

AUTO DRAIN

PART NUMBER	BODY SIZE	PORT SIZE	FLOW RATE (L/MIN)	PRICE
EM-EC3010-02D-5	3000	1/4"	1874	£108.15
EM-EC3010-03D-5	3000	3/8"	1956	£108.15
EM-EC4010-03D-5	4000	3/8"	4923	£139.64
EM-EC4010-04D-5	4000	1/2"	5120	£139.64
EM-EC5010-06D-5	5000	3/4"	6000	£183.45
EM-EC5010-10D-5	5000	1"	6200	£183.45



3650

EC SERIES FILTER / REGULATOR / LUBRICATOR MANUAL DRAIN

PART NUMBER	BODY SIZE	PORT SIZE	FLOW RATE (L/MIN)	PRICE
EM-EC2000-01-5	2000	1/8"	1000	£55.84
EM-EC2000-02-5	2000	1/4"	1100	£55.84

AUTO DRAIN

PART NUMBER	BODY SIZE	PORT SIZE	FLOW RATE (L/MIN)	PRICE
EM-EC2000-01D-5	2000	1/8"	1000	£74.48
EM-EC2000-02D-5	2000	1/4"	1100	£74.48

EC SERIES FILTER / REGULATOR / LUBRICATOR WITH METAL BOWL GUARD MANUAL DRAIN


3650

PART NUMBER	BODY SIZE	PORT SIZE	FLOW RATE (L/MIN)	PRICE
EM-EC3000-02-5	3000	1/4"	1950	£85.76
EM-EC3000-03-5	3000	3/8"	2105	£85.76
EM-EC4000-03-5	4000	3/8"	4950	£115.65
EM-EC4000-04-5	4000	1/2"	5200	£115.65
EM-EC5000-06-5	5000	3/4"	6200	£159.47
EM-EC5000-10-5	5000	1"	6500	£159.47

AUTO DRAIN

PART NUMBER	BODY SIZE	PORT SIZE	FLOW RATE (L/MIN)	PRICE
EM-EC3000-02D-5	3000	1/4"	1950	£123.19
EM-EC3000-03D-5	3000	3/8"	2105	£123.19
EM-EC4000-03D-5	4000	3/8"	4950	£153.16
EM-EC4000-04D-5	4000	1/2"	5200	£153.16
EM-EC5000-06D-5	5000	3/4"	6200	£196.89
EM-EC5000-10D-5	5000	1"	6500	£196.89

EC series products come complete with gauge and bracket
Flow rates are based on an 8 bar supply pressure and
6.3 bar set pressure

E SERIES
EF FILTERS

Six



3650



3650

**EF SERIES FILTER
MANUAL DRAIN**

PART NUMBER	BODY SIZE	PORT SIZE	FLOW RATE (L/MIN)	PRICE
EM-EF2000-01J	2000	1/8"	1222	£13.89
EM-EF2000-02J	2000	1/4"	1278	£13.89

**EF SERIES FILTER
WITH METAL BOWL GUARD
MANUAL DRAIN**

PART NUMBER	BODY SIZE	PORT SIZE	FLOW RATE (L/MIN)	PRICE
EM-EF3000-02J	3000	1/4"	2006	£20.97
EM-EF3000-03J	3000	3/8"	2148	£20.97
EM-EF4000-03J	4000	3/8"	5120	£29.24
EM-EF4000-04J	4000	1/2"	5430	£29.24
EM-EF5000-06J	5000	3/4"	8200	£43.50
EM-EF5000-10J	5000	1"	8500	£43.50

AUTO DRAIN

EM-EF2000-01DJ	2000	1/8"	1222	£32.58
EM-EF2000-02DJ	2000	1/4"	1278	£32.58

AUTO DRAIN

EM-EF3000-02DJ	3000	1/4"	2006	£58.39
EM-EF3000-03DJ	3000	3/8"	2148	£58.39
EM-EF4000-03DJ	4000	3/8"	5120	£66.67
EM-EF4000-04DJ	4000	1/2"	5430	£66.67
EM-EF5000-06DJ	5000	3/4"	8200	£80.88
EM-EF5000-10DJ	5000	1"	8500	£80.88

EF series products do not include a bracket
Flow rates are based on an 8 bar supply pressure and
6.3 bar set pressure

EL LUBRICATORS


3650



3650

EL SERIES LUBRICATOR

PART NUMBER	BODY SIZE	PORT SIZE	FLOW RATE (L/MIN)	PRICE
EM-EL2000-01J	2000	1/8"	1300	£13.89
EM-EL2000-02J	2000	1/4"	1345	£13.89

**EL SERIES LUBRICATOR
WITH METAL BOWL GUARD**

PART NUMBER	BODY SIZE	PORT SIZE	FLOW RATE (L/MIN)	PRICE
EM-EL3000-02J	3000	1/4"	2310	£20.97
EM-EL3000-03J	3000	3/8"	2375	£20.97
EM-EL4000-03J	4000	3/8"	5321	£29.24
EM-EL4000-04J	4000	1/2"	5532	£29.24
EM-EL5000-06J	5000	3/4"	7700	£46.01
EM-EL5000-10J	5000	1"	8000	£46.01

EL series products do not include a bracket
Flow rates are based on an 8 bar supply pressure and
6.3 bar set pressure

LUBRICATING OIL


9110

**LUBRICATING OIL
GRADE 22 HM TYPE**

PART NUMBER	DESCRIPTION	PRICE
H01LL	1 litre	£7.96
H05LL	5 litre	£33.00
H20LL	20 litre	£127.20

You may also need ...

Air tools


... on pages 1006 – 1009, section 20

E SERIES
SHUT-OFF VALVES


3650

**3/2 SHUT-OFF VALVE
LOCKABLE**

PART NUMBER	BODY SIZE	PORT	PRICE
EM-EVSH2000-01	2000	1/8"	£26.73
EM-EVSH2000-02	2000	1/4"	£26.73
EM-EVSH3000-02	3000	1/4"	£40.07
EM-EVSH3000-03	3000	3/8"	£40.03
EM-EVSH4000-03	4000	3/8"	£56.06
EM-EVSH4000-04	4000	1/2"	£56.06

Autodrain
Installation:
Install drainer
vertically with
drain port
facing down

AUTO DRAINS
FEATURES

- Drip Leg / Auto Drain
- Fully automatic operation
- Auto drain discharges the condensate each time the maximum permissible level in the bowl is reached
- When total pressure is removed from the system, the drain will also open
- Collected liquids can be piped away

SPECIFICATIONS

Working medium	Compressed air
Working temperature	+5°C to +60°C
Working pressure	1.5 to 10 bar
Guaranteed pressure resistance	15 bar



3650

**DRIP LEG AUTO DRAIN
150 ML BOWL CAPACITY**

PART NUMBER	PORT	OUTSIDE DIAMETER	LENGTH	PRICE
EM-HED402-02	1/4"	72 mm	162 mm	£67.40
EM-HED402-03	3/8"	72 mm	162 mm	£67.40
EM-HED402-04	1/2"	72 mm	162 mm	£67.40

E SERIES ACCESSORIES
PRESSURE GAUGE


3650

PART NUMBER	SERIES	DIA.	THREAD	PRICE
EM-EYZ4001051B-06	2000 / 3000	40 mm	1/8"	£4.39
EM-EYZ5001051B-08	4000 / 5000	50 mm	1/4"	£4.80

**INTERNAL PRESSURE GAUGE
SUITABLE FOR EI SERIES**


3650

PART NUMBER	FOR USE WITH	PRICE
EM-FB-0102	EI Series	£6.44

**TYPE 20 MOUNTING BRACKET
SUITABLE FOR ER / EW / EIR
& EIW SERIES**


3650

PART NUMBER	FOR USE WITH	PRICE
EM-B220	ER/EW/EIR/EIW 2000	£3.06
EM-B320	ER/EW/EIR/EIW 3000	£4.07
EM-B420	ER/EW/EIR/EIW 4000/5000	£5.12

**TYPE 40 MOUNTING BRACKET
SUITABLE FOR EF & EL SERIES**


3650

PART NUMBER	FOR USE WITH	PRICE
EM-B240	EF/EL 2000	£3.06
EM-B340	EF/EL 3000	£4.07
EM-B440	EF/EL 4000	£5.12
EM-B640	EF/EL 5000	£8.18

**T-TYPE MOUNTING BRACKET
SUITABLE FOR EC SERIES**


3650

PART NUMBER	FOR USE WITH	PRICE
EM-Y20T	EC2010	£7.13
EM-Y30T	EC3010	£11.19
EM-Y40T	EC4010	£13.25
EM-Y60T	EC5010	£16.31

AIR TAKE OFF SPACER


3650

PART NUMBER	FOR USE WITH	PORT SIZE	PRICE
EM-Y21-01*	EIC/EC2000	1/8"	£10.20
EM-Y21-02*	EIC/EC2000	1/4"	£10.20
EM-Y31-01	EIC/EC3000	1/8"	£15.30
EM-Y31-02	EIC/EC3000	1/4"	£15.30
EM-Y41-02	EIC/EC4000	1/4"	£18.34
EM-Y41-03	EIC/EC4000	3/8"	£18.34
EM-Y61-03	EIC/EC5000	3/8"	£25.48
EM-Y61-04	EIC/EC5000	1/2"	£25.48

* EM-Y21-01 and EM-Y21-02 can only be used with three unit combinations i.e. Filter + regulator + lubricator



3650

AUTO DRAIN KIT

PART NUMBER	FOR USE WITH	PRICE
EM-ZDFS-08	3000	£36.94
EM-ZDFS-10	4000 / 5000	£36.94

FILTER ELEMENT


3650

PART NUMBER	FILTER PRECISION	FOR USE WITH	PRICE
EM-EF2000-005-2	5 micron	EI2000 / E2000	£1.64
EM-EF2000-005-1	25 micron	EI2000 / E2000	£1.64
EM-EF3000-005-2	5 micron	EI3000 / E3000	£2.24
EM-EF3000-005-1	25 micron	EI3000 / E3000	£2.24
EM-EF4000-005-2	5 micron	EI4000 / E4000	£4.89
EM-EF4000-005-1	25 micron	EI4000 / E4000	£4.89
EM-EF5000-005-2	5 micron	EI5000 / E5000	£7.63
EM-EF5000-005-1	25 micron	EI5000 / E5000	£7.63

IA, IAC & IASB SERIES

FEATURES / BENEFITS

- Front/rear covers machined by high precision CNC machine, giving high consistency and concentricity
- Japanese anti-dust seal, providing better sealing performance and dust protection
- German grease provides a longer cylinder life
- Riveted cylinder barrel structure and front / rear cover gives higher efficiency, performance and improved compression resistance
- Cap positioning machine guarantees front and rear caps locate at same horizontal position, making them easier to install

SPECIFICATIONS

Cylinder type	Single or double acting Magnetic positioning
Materials	Aluminium end blocks. S45C hard chrome carbon steel piston rod. Stainless steel barrel. NBR seals.
Max. operating pressure	10 bar
Operating temperature	-20°C to +80°C (dry air)
Speed range	Double acting: 30 to 800 mm/s Single acting: 50 to 800 mm/s
Bore	ø10 mm, ø12 mm, ø16 mm, ø20 mm, ø25 mm
Mounting	Foot, front / rear flange and rear clevis
Available stroke length	0-500 mm
Cushion type	Rubber or adjustable air cushion

Six

For cylinder dimensional drawings please see page 336



IAC SERIES DOUBLE ACTING AIR CUSHIONED 16 BORE

3610

PART NUMBER	BORE	STROKE	PRICE
EM-IAC16X25-S	16 mm	25 mm	£38.29
EM-IAC16X50-S	16 mm	50 mm	£40.71
EM-IAC16X80-S	16 mm	80 mm	£45.42
EM-IAC16X100-S	16 mm	100 mm	£45.46
EM-IAC16X125-S	16 mm	125 mm	£47.79
EM-IAC16X150-S	16 mm	150 mm	£50.22

20 BORE

EM-IAC20X25-S	20 mm	25 mm	£40.16
EM-IAC20X50-S	20 mm	50 mm	£43.22
EM-IAC20X80-S	20 mm	80 mm	£49.35
EM-IAC20X100-S	20 mm	100 mm	£49.35
EM-IAC20X125-S	20 mm	125 mm	£52.45
EM-IAC20X150-S	20 mm	150 mm	£55.47

25 BORE

EM-IAC25X25-S	25 mm	25 mm	£45.10
EM-IAC25X50-S	25 mm	50 mm	£46.97
EM-IAC25X80-S	25 mm	80 mm	£53.19
EM-IAC25X100-S	25 mm	100 mm	£53.19
EM-IAC25X125-S	25 mm	125 mm	£56.48
EM-IAC25X150-S	25 mm	150 mm	£59.81

IA SERIES DOUBLE ACTING RUBBER CUSHIONED 10 BORE



3610

PART NUMBER	BORE	STROKE	PRICE
EM-IA10X25-S	10 mm	25 mm	£22.48
EM-IA10X50-S	10 mm	50 mm	£23.94
EM-IA10X80-S	10 mm	80 mm	£26.91
EM-IA10X100-S	10 mm	100 mm	£26.91

12 BORE

EM-IA12X25-S	12 mm	25 mm	£31.57
EM-IA12X50-S	12 mm	50 mm	£33.40
EM-IA12X80-S	12 mm	80 mm	£38.98
EM-IA12X100-S	12 mm	100 mm	£38.98

16 BORE

EM-IA16X25-S	16 mm	25 mm	£29.47
EM-IA16X50-S	16 mm	50 mm	£31.30
EM-IA16X80-S	16 mm	80 mm	£34.95
EM-IA16X100-S	16 mm	100 mm	£34.95
EM-IA16X125-S	16 mm	125 mm	£36.78
EM-IA16X150-S	16 mm	150 mm	£38.66

20 BORE

EM-IA20X25-S	20 mm	25 mm	£30.89
EM-IA20X50-S	20 mm	50 mm	£33.26
EM-IA20X80-S	20 mm	80 mm	£37.97
EM-IA20X100-S	20 mm	100 mm	£37.97
EM-IA20X125-S	20 mm	125 mm	£40.35
EM-IA20X150-S	20 mm	150 mm	£42.68

25 BORE

EM-IA25X25-S	25 mm	25 mm	£33.22
EM-IA25X50-S	25 mm	50 mm	£35.78
EM-IA25X80-S	25 mm	80 mm	£40.89
EM-IA25X100-S	25 mm	100 mm	£40.89
EM-IA25X125-S	25 mm	125 mm	£43.45
EM-IA25X150-S	25 mm	150 mm	£46.01

IASB SERIES SINGLE ACTING SPRING RETURN 10 BORE



3610

PART NUMBER	BORE	STROKE	PRICE
EM-IASB12X25-S	12 mm	25 mm	£39.30
EM-IASB12X50-S	12 mm	50 mm	£43.41
EM-IASB12X80-S	12 mm	80 mm	£40.71
EM-IASB12X125-S	12 mm	125 mm	£42.72
EM-IASB12X150-S	12 mm	150 mm	£44.73

16 BORE

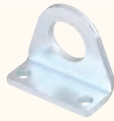
EM-IASB16X25-S	16 mm	25 mm	£44.05
EM-IASB16X50-S	16 mm	50 mm	£46.79
EM-IASB16X80-S	16 mm	80 mm	£52.27
EM-IASB16X125-S	16 mm	125 mm	£55.01
EM-IASB16X150-S	16 mm	150 mm	£57.76

20 BORE

EM-IASB20X25-S	20 mm	25 mm	£46.19
EM-IASB20X50-S	20 mm	50 mm	£49.71
EM-IASB20X80-S	20 mm	80 mm	£56.75
EM-IASB20X125-S	20 mm	125 mm	£60.27
EM-IASB20X150-S	20 mm	150 mm	£63.92

25 BORE

EM-IASB25X10-S	25 mm	10 mm	£45.19
EM-IASB25X25-S	25 mm	25 mm	£49.62
EM-IASB25X50-S	25 mm	50 mm	£53.46
EM-IASB25X80-S	25 mm	80 mm	£61.14
EM-IASB25X125-S	25 mm	125 mm	£64.97
EM-IASB25X150-S	25 mm	150 mm	£68.72

IASB / IAS / IA SERIES ACCESSORIES

MOUNTING FOOT (2 PIECES)

3610

PART NUMBER	CYLINDER BORE	PRICE
EM-FJ-IA12LB	12 mm / 16 mm	£4.25
EM-FJ-IA20LB	20 mm / 25 mm	£4.66


REAR CLEVIS

3610

PART NUMBER	CYLINDER BORE	PRICE
EM-FJ-IA12SDB	12 mm / 16 mm	£8.54
EM-FJ-IA20SDB	20 mm / 25 mm	£8.54


FRONT FLANGE

3610

PART NUMBER	CYLINDER BORE	PRICE
EM-FJ-IA20FA	20 mm / 25 mm	£5.71


PISTON ROD CLEVIS AND PIN

3610

PART NUMBER	CYLINDER BORE	THREAD	PRICE
EM-FJ-M6X1YCJ	12 mm / 16 mm	M6 x 1	£4.43
EM-FJ-M8X1.25YCJ	20 mm	M8 x 1.25	£5.71
EM-FJ-M10X1.25YCJ	25 mm	M10 x 1.25	£8.04


SINGLE PISTON ROD CLEVIS

3610

PART NUMBER	CYLINDER BORE	THREAD	PRICE
EM-FJ-M6X1IJ	12 mm / 16 mm	M6 x 1	£3.84
EM-FJ-M8X1.25IJ	20 mm	M8 x 1.25	£4.80
EM-FJ-M10X1.25IJ	25 mm	M10 x 1.25	£5.89


MAGNETIC SWITCH

3610

PART NUMBER	DESCRIPTION	PRICE
EM-HX-13D	2 wire without contact switch 10-28 V DC	£20.10
EM-HX-13N	NPN type 3 wire 5-30 V DC	£33.26
EM-HX-13P	PNP type 3 wire 5-30 V DC	£33.26
EM-HX-13R	2 wire reed switch 5-240 V AC/DC	£14.30


**FIXED STEEL BELT
LENGTH TYPE FOR HX-13**

3610

PART NUMBER	BORE	PRICE
EM-PAB-13	6 – 63 mm	£2.68

You may also need ...

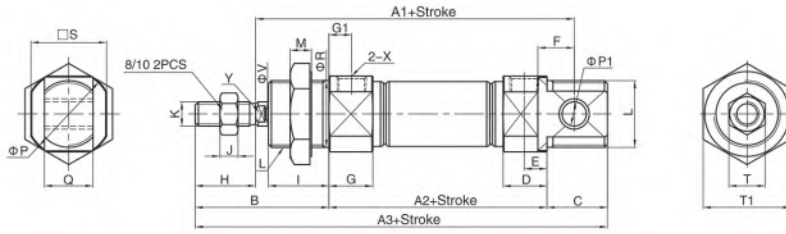
**CDC polyurethane
airline recoils with
fittings**


... on page 618, section 11

EMC-IA SERIES

IA $\Phi 8-\Phi 25$

CA Type



(mm)

Bore:Sign	A1	A2	A3	A4	A5	B	C	C1	C2	D	E	F	G	G1	H	I	J	K	L	M	P	P1	Q	R	S
8	64	46	86	74	-	28	12	9.5	5	9.5	5.2	6	11.5	7	12	12	3	M4X0.7	M12X1.25	7	17	4	8	12	15
10	64	46	86	74	-	28	12	9.5	5	9.5	5.2	6	11.5	7	12	12	3	M4X0.7	M12X1.25	7	17	4	8	12	15
12	75	50	105	88	105	38	17	10	5	10	5	9	12	7	16	17	5	M6X1.0	M16X1.5	6	19.7	6	12	16	18.3
16	82	56	111	94	111	38	17	10.5	5.5	10.5	5.5	9	12.5	7	16	17	5	M6X1.0	M16X1.5	6	22	6	12	16	20
20	95	62	126	106	126	44	20	14.5	7.5	14.5	7.5	12	14.5	7.5	20	20	6	M8X1.25	M22X1.5	7	29	8	16	22	25
25	104	65	137	115	137	50	22	16	8	16	8	12	16	8	22	22	6	M10X1.25	M22X1.5	7	33.5	8	16	22	30

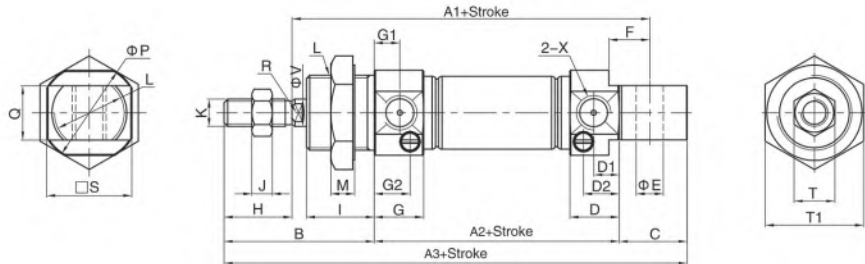
Bore:Sign	T	T1	X	V	W	Y
8	7	17	M5X0.8	4	-	-
10	7	17	M5X0.8	4	-	-
12	10	22	M5X0.8	6	15	5
16	10	22	M5X0.8	6	15	5
20	12	29	1/8"	8	18	6
25	17	29	1/8"	10	20	8

Note: With magnet and no magnet, the dimensions are same.

EMC-IAC SERIES

IAC $\Phi 16-\Phi 25$

CA Type



(mm)

Bore:Sign	A1	A2	A3	A4	A5	B	C	D	D1	D2	D3	E	F	G	G1	G2	H	I	J	K	L	M	P	Q	R
16	82	56	111	94	111	38	17	12	6	9	12	6	9	12.5	7	9.5	16	17	5	M6X1.0	M16X1.5	6	22	12	5
20	95	62	126	106	126	44	20	14.5	7.5	11	14.5	8	12	14.5	7.5	11	20	20	6	M8X1.25	M22X1.5	7	29	16	6
25	104	65	137	115	137	50	22	16	8	12.5	16	8	12	16	8	12.5	22	22	6	M10X1.25	M22X1.5	7	33.5	16	8

Bore:Sign	S	T	T1	X	V	W
16	20	10	22	M5X0.8	6	15
20	25	12	29	1/8"	8	18
25	30	17	29	1/8"	10	20

Note: With magnet and no magnet, the dimensions are same.

FVBC SERIES

DESCRIPTION

The updated FVBC/VBC series pneumatic cylinder completely adheres to ISO15552 standard, bore sizes range from 32 mm to 100 mm. According to working regulation and force focus, the cylinder was newly designed with a complete change of covers and piston, with full PU sealing system, magnet integrated into wear ring slot, double cushion structure, strengthened cushion needle and guider. We also studied every process that will result in better quality, from material choice, die-casting technology, covers machining consistency, testing style, etc. This all made further improvement. The pneumatic cylinder is automatically machined by high precision CNC machine robots, and is automatically assembled and tested.

FEATURES

- Highlighted products for process optimisation
- Adheres to ISO15552 standard
- All PU sealing system
- Strong guiding design with high concentricity
- Bronze bearing with much better lateral loading
- Strengthened cushion design, soft ending
- Double cushioning system
- 2000KM loaded stroke life

Non-standard stroke available on request



SPECIFICATIONS

Cylinder type	Double acting, magnetic positioning
Materials	Aluminium end caps. S45C hard chrome carbon steel piston rod. Hard anodised aluminium barrel. PU seals.
Max. working pressure	10 bar
Operating temperature	-20°C to +80°C (dry air)
Speed range	50 to 800 mm/s
Bore	ø32 mm, ø40 mm, ø50 mm, ø63 mm, ø80 mm, ø100 mm
Mounting	Foot, rear trunnion, 90° rear trunnion, front flange, rear flange.
Available stroke length	0 – 1900 mm
Cushion type	Adjustable air cushion

FVBC SERIES CYLINDER

32 BORE

PART NUMBER	BORE	STROKE	PRICE
EM-FVBC32X25-S	32 mm	25 mm	£61.23
EM-FVBC32X50-S	32 mm	50 mm	£64.47
EM-FVBC32X80-S	32 mm	80 mm	£70.96
EM-FVBC32X100-S	32 mm	100 mm	£70.96
EM-FVBC32X125-S	32 mm	125 mm	£74.20
EM-FVBC32X160-S	32 mm	160 mm	£80.69
EM-FVBC32X200-S	32 mm	200 mm	£83.94
EM-FVBC32X250-S	32 mm	250 mm	£90.43

40 BORE

EM-FVBC40X25-S	40 mm	25 mm	£79.69
EM-FVBC40X50-S	40 mm	50 mm	£83.80
EM-FVBC40X80-S	40 mm	80 mm	£92.53
EM-FVBC40X100-S	40 mm	100 mm	£92.53
EM-FVBC40X125-S	40 mm	125 mm	£97.05
EM-FVBC40X160-S	40 mm	160 mm	£105.78
EM-FVBC40X200-S	40 mm	200 mm	£109.80
EM-FVBC40X250-S	40 mm	250 mm	£118.53

50 BORE

EM-FVBC50X25-S	50 mm	25 mm	£97.92
EM-FVBC50X50-S	50 mm	50 mm	£103.36
EM-FVBC50X80-S	50 mm	80 mm	£113.91
EM-FVBC50X100-S	50 mm	100 mm	£113.87
EM-FVBC50X125-S	50 mm	125 mm	£118.89
EM-FVBC50X160-S	50 mm	160 mm	£129.35
EM-FVBC50X200-S	50 mm	200 mm	£134.88
EM-FVBC50X250-S	50 mm	250 mm	£145.37

63 BORE

EM-FVBC63X25-S	63 mm	25 mm	£114.64
EM-FVBC63X50-S	63 mm	50 mm	£121.54
EM-FVBC63X80-S	63 mm	80 mm	£134.79
EM-FVBC63X100-S	63 mm	100 mm	£134.79
EM-FVBC63X125-S	63 mm	125 mm	£141.23
EM-FVBC63X160-S	63 mm	160 mm	£154.49
EM-FVBC63X200-S	63 mm	200 mm	£160.88
EM-FVBC63X250-S	63 mm	250 mm	£174.04
EM-FVBC63X320-S	63 mm	320 mm	£200.13
EM-FVBC63X400-S	63 mm	400 mm	£213.43
EM-FVBC63X500-S	63 mm	500 mm	£239.88

80 BORE

PART NUMBER	BORE	STROKE	PRICE
EM-FVBC80X25-S	80 mm	25 mm	£155.31
EM-FVBC80X50-S	80 mm	50 mm	£164.45
EM-FVBC80X80-S	80 mm	80 mm	£182.72
EM-FVBC80X100-S	80 mm	100 mm	£182.72
EM-FVBC80X125-S	80 mm	125 mm	£191.86
EM-FVBC80X160-S	80 mm	160 mm	£210.55
EM-FVBC80X200-S	80 mm	200 mm	£219.73
EM-FVBC80X250-S	80 mm	250 mm	£238.01
EM-FVBC80X320-S	80 mm	320 mm	£274.52
EM-FVBC80X400-S	80 mm	400 mm	£293.25
EM-FVBC80X500-S	80 mm	500 mm	£329.81

100 BORE

EM-FVBC100X25-S	100 mm	25 mm	£190.08
EM-FVBC100X50-S	100 mm	50 mm	£202.01
EM-FVBC100X80-S	100 mm	80 mm	£225.31
EM-FVBC100X100-S	100 mm	100 mm	£225.31
EM-FVBC100X125-S	100 mm	125 mm	£237.19
EM-FVBC100X160-S	100 mm	160 mm	£260.90
EM-FVBC100X200-S	100 mm	200 mm	£272.83
EM-FVBC100X250-S	100 mm	250 mm	£296.59
EM-FVBC100X320-S	100 mm	320 mm	£343.65
EM-FVBC100X400-S	100 mm	400 mm	£367.41
EM-FVBC100X500-S	100 mm	500 mm	£414.47

For cylinder dimensional drawings please see page 341



VBC SERIES

DESCRIPTION

VBC series pneumatic cylinder is a pneumatic cylinder, which conforms to ISO15552 standard, bore sizes range from 32 mm to 320 mm. According to working regulation and force focus, the pneumatic cylinder was newly designed with a complete change of covers and piston, with full PU sealing system, magnet integrated into wear ring slot, double cushion structure, strengthened cushion needle and guider. We also studied every process that will result in better quality, from material choice, die-casting technology, covers machining consistency, testing style, etc. This all made further improvement. The pneumatic cylinder is automatically machined by high precision CNC machine robots, and is automatically assembled and tested. Available with VBC series mickey mouse type pneumatic cylinder and LBC series tie-rod type pneumatic cylinder.

FEATURES

- Highlighted products for process optimisation
- Adheres to ISO15552 standard
- All PU sealing system
- Strong guiding design with high concentricity
- Bronze bearing with much better lateral loading
- Strengthened cushion design, soft ending
- Double cushioning system
- 2000KM loaded stroke life

SPECIFICATIONS

Cylinder type	Double acting, magnetic positioning
Materials	Aluminium end caps. S45C hard chrome carbon steel piston rod. Hard anodised aluminium barrel. PU seals.
Max. working pressure	10 bar
Operating temperature	-20°C to +80°C (dry air)
Speed range	50 – 800 mm/s
Mounting	Foot, rear trunnion, 90° rear trunnion, front flange, rear flange.
Available bore sizes	ø32 – 200 mm
Available stroke length	0 – 3000 mm
Cushion type	Adjustable air cushion

Six



3610

VBC SERIES STANDARD PROFILE CYLINDER

32 BORE

PART NUMBER	BORE	STROKE	PRICE
EM-VBC32X25-S	32 mm	25 mm	£58.62
EM-VBC32X50-S	32 mm	50 mm	£58.60
EM-VBC32X80-S	32 mm	80 mm	£62.88
EM-VBC32X100-S	32 mm	100 mm	£62.88
EM-VBC32X125-S	32 mm	125 mm	£66.76
EM-VBC32X160-S	32 mm	160 mm	£73.56
EM-VBC32X200-S	32 mm	200 mm	£73.56
EM-VBC32X250-S	32 mm	250 mm	£80.33
EM-VBC32X320-S	32 mm	320 mm	£90.01

40 BORE

EM-VBC40X25-S	40 mm	25 mm	£66.39
EM-VBC40X50-S	40 mm	50 mm	£66.37
EM-VBC40X80-S	40 mm	80 mm	£71.54
EM-VBC40X100-S	40 mm	100 mm	£71.54
EM-VBC40X125-S	40 mm	125 mm	£76.70
EM-VBC40X160-S	40 mm	160 mm	£82.25
EM-VBC40X200-S	40 mm	200 mm	£82.25
EM-VBC40X250-S	40 mm	250 mm	£89.05
EM-VBC40X320-S	40 mm	320 mm	£108.15

50 BORE

EM-VBC50X25-S	50 mm	25 mm	£88.58
EM-VBC50X50-S	50 mm	50 mm	£88.58
EM-VBC50X80-S	50 mm	80 mm	£95.04
EM-VBC50X100-S	50 mm	100 mm	£95.04
EM-VBC50X125-S	50 mm	125 mm	£101.47
EM-VBC50X160-S	50 mm	160 mm	£107.93
EM-VBC50X200-S	50 mm	200 mm	£107.93
EM-VBC50X250-S	50 mm	250 mm	£115.01
EM-VBC50X320-S	50 mm	320 mm	£130.13

63 BORE

EM-VBC63X25-S	63 mm	25 mm	£105.77
EM-VBC63X50-S	63 mm	50 mm	£105.77
EM-VBC63X80-S	63 mm	80 mm	£113.28
EM-VBC63X100-S	63 mm	100 mm	£113.28
EM-VBC63X125-S	63 mm	125 mm	£120.76
EM-VBC63X160-S	63 mm	160 mm	£130.54
EM-VBC63X200-S	63 mm	200 mm	£130.54
EM-VBC63X250-S	63 mm	250 mm	£142.19
EM-VBC63X320-S	63 mm	320 mm	£162.44
EM-VBC63X400-S	63 mm	400 mm	£177.06
EM-VBC63X500-S	63 mm	500 mm	£200.22

80 BORE

PART NUMBER	BORE	STROKE	PRICE
EM-VBC80X25-S	80 mm	25 mm	£136.47
EM-VBC80X50-S	80 mm	50 mm	£136.47
EM-VBC80X80-S	80 mm	80 mm	£148.70
EM-VBC80X100-S	80 mm	100 mm	£148.70
EM-VBC80X125-S	80 mm	125 mm	£160.96
EM-VBC80X160-S	80 mm	160 mm	£172.31
EM-VBC80X200-S	80 mm	200 mm	£172.31
EM-VBC80X250-S	80 mm	250 mm	£187.75
EM-VBC80X320-S	80 mm	320 mm	£215.53
EM-VBC80X400-S	80 mm	400 mm	£236.18
EM-VBC80X500-S	80 mm	500 mm	£269.08

100 BORE

EM-VBC100X25-S	100 mm	25 mm	£174.28
EM-VBC100X50-S	100 mm	50 mm	£174.28
EM-VBC100X80-S	100 mm	80 mm	£187.19
EM-VBC100X100-S	100 mm	100 mm	£187.19
EM-VBC100X125-S	100 mm	125 mm	£200.08
EM-VBC100X160-S	100 mm	160 mm	£214.89
EM-VBC100X200-S	100 mm	200 mm	£214.89
EM-VBC100X250-S	100 mm	250 mm	£232.35
EM-VBC100X320-S	100 mm	320 mm	£262.09
EM-VBC100X400-S	100 mm	400 mm	£284.57
EM-VBC100X500-S	100 mm	500 mm	£319.43

125 BORE

EM-VBC125X50-S	125 mm	50 mm	£295.39
EM-VBC125X80-S	125 mm	80 mm	£316.38
EM-VBC125X100-S	125 mm	100 mm	£316.38
EM-VBC125X125-S	125 mm	125 mm	£337.39
EM-VBC125X160-S	125 mm	160 mm	£358.41
EM-VBC125X200-S	125 mm	200 mm	£358.41
EM-VBC125X250-S	125 mm	250 mm	£379.38
EM-VBC125X320-S	125 mm	320 mm	£417.58
EM-VBC125X400-S	125 mm	400 mm	£438.51
EM-VBC125X500-S	125 mm	500 mm	£485.34

Available upon request:
160 / 200 bore
Additional strokes available on all bore sizes

For cylinder dimensional drawings please see page 338



3610

FEMALE REAR TRUNNION AND PIN

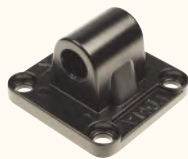
PART NUMBER	CYLINDER BORE	PRICE
EM-FJ-VBC32CB	32 mm	£8.64
EM-FJ-VBC40CB	40 mm	£9.50
EM-FJ-VBC50CB	50 mm	£13.39
EM-FJ-VBC63CB	63 mm	£15.95
EM-FJ-VBC80CB	80 mm	£19.78
EM-FJ-VBC100CB	100 mm	£31.21
EM-FJ-VBC125CB	125 mm	£45.44



3610

PISTON ROD CLEVIS AND PIN

PART NUMBER	CYLINDER BORE	THREAD	PRICE
EM-FJ-M10X1.25YCJ	32 mm	M10x1.25	£8.04
EM-FJ-M12X1.25YCJ	40 mm	M12x1.25	£11.42
EM-FJ-M16X1.5YCJ	50 mm / 63 mm	M16x1.5	£16.27
EM-FJ-M20X1.5YCJ	80 mm / 100 mm	M20x1.5	£26.55
EM-FJ-M27X2YCJ	125 mm	M27x2	£64.33



3610

MALE REAR TRUNNION

PART NUMBER	CYLINDER BORE	PRICE
EM-FJ-VBC32CA	32 mm	£7.90
EM-FJ-VBC40CA	40 mm	£8.64
EM-FJ-VBC50CA	50 mm	£10.42
EM-FJ-VBC63CA	63 mm	£12.98
EM-FJ-VBC80CA	80 mm	£22.71
EM-FJ-VBC100CA	100 mm	£24.54
EM-FJ-VBC125CA	125 mm	£34.95



3610

PISTON ROD SPHERICAL ROD EYE

PART NUMBER	CYLINDER BORE	THREAD	PRICE
EM-FJ-M10X1.25BJ	32 mm	M10x1.25	£6.99
EM-FJ-M12X1.25BJ	40 mm	M12x1.25	£7.27
EM-FJ-M16X1.5BJ	50 mm / 63 mm	M16x1.5	£12.61
EM-FJ-M20X1.5BJ	80 mm / 100 mm	M20x1.5	£19.74
EM-FJ-M27X2BJ	125 mm	M27x2	£51.50



3610

90° MALE REAR TRUNNION

PART NUMBER	CYLINDER BORE	PRICE
EM-FJ-VBC32CR	32 mm	£9.09
EM-FJ-VBC40CR	40 mm	£11.47
EM-FJ-VBC50CR	50 mm	£15.76
EM-FJ-VBC63CR	63 mm	£20.06
EM-FJ-VBC80CR	80 mm	£29.61
EM-FJ-VBC100CR	100 mm	£40.16
EM-FJ-VBC125CR	125 mm	£51.50



3610

PISTON ROD FLOATING JOINT

PART NUMBER	CYLINDER BORE	THREAD	PRICE
EM-FJ-M10X1.25FD	32 mm	M10x1.25	£13.98
EM-FJ-M12X1.25FD	40 mm	M12x1.25	£17.68
EM-FJ-M16X1.5FD	50 mm / 63 mm	M16x1.5	£29.93
EM-FJ-M20X1.5FD	80 mm / 100 mm	M20x1.5	£39.02
EM-FJ-M27X2FD	125 mm	M27x2	£82.57



3610

FRONT OR REAR FLANGE

PART NUMBER	CYLINDER BORE	PRICE
EM-FJ-VBC32FA	32 mm	£12.15
EM-FJ-VBC40FA	40 mm	£14.16
EM-FJ-VBC50FA	50 mm	£20.24
EM-FJ-VBC63FA	63 mm	£24.31
EM-FJ-VBC80FA	80 mm	£36.51
EM-FJ-VBC100FA	100 mm	£48.66
EM-FJ-VBC125FA	125 mm	£54.61



3610

FEET (2 PIECES)

PART NUMBER	CYLINDER BORE	PRICE
EM-FJ-VBC32LB	32 mm	£4.39
EM-FJ-VBC40LB	40 mm	£6.58
EM-FJ-VBC50LB	50 mm	£8.73
EM-FJ-VBC63LB	63 mm	£13.11
EM-FJ-VBC80LB	80 mm	£15.31
EM-FJ-VBC100LB	100 mm	£17.50
EM-FJ-VBC125LB	125 mm	£32.77



**FVBC SERIES
MAGNETIC SWITCH**

3610

PART NUMBER	DESCRIPTION	PRICE
EM-HX-31R	2 wire reed auto switch SPST normally open Operating voltage 5–240 V DC / AC Red LED indicator 1 m cable IP67 rated surge protection	£11.06
EM-HX-31N	NPN 3 wire solid state auto switch Normally open (input) Operating voltage 5–30 V DC Red LED indicator 1 m cable IP67 rated surge protection	£31.62
EM-HX-31P	PNP 3 wire solid state auto switch Normally open (output) Operating voltage 5–30 V DC Yellow LED indicator 1 m cable IP67 rated surge protection	£31.62

**CYLINDER SEAL KIT
SUITABLE FOR VBC & FVBC SERIES**

3610

PART NUMBER	BORE SIZE	PRICE
EM-VBC32-XLB	32 mm	£11.88
EM-VBC40-XLB	40 mm	£14.80
EM-VBC50-XLB	50 mm	£17.73
EM-VBC63-XLB	63 mm	£20.33
EM-VBC80-XLB	80 mm	£24.63
EM-VBC100-XLB	100 mm	£28.19
EM-VBC125-XLB	125 mm	£16.63

**VBC SERIES
HX21 SWITCH CLAMP
ALUMINIUM ALLOY**



3610

PART NUMBER	BORE	PRICE
EM-PI-1	32/40 mm	£2.74
EM-IH-50	50 mm	£2.74
EM-IH-63	63 mm	£2.74
EM-PI-3	80 mm	£4.98
EM-PI-4	100 mm	£4.98
EM-PI-5	125 mm	£8.96

**HX-07 MAGNETIC SWITCH
FOR USE WITH
SQ, SGM & EXH SERIES**



3610

PART NUMBER	DESCRIPTION	PRICE
EM-HX-07R	Standard 2 wire reed switch Normally open Operating voltage 5-240 V DC/AC Red LED indicator 1 m cable IP67 rated	£8.10
EM-HX-07N	NPN 3 wire solid state auto switch Normally open (input) Operating voltage 5-30 V DC Red LED indicator 1 m cable IP67 rated surge protection	£24.98
EM-HX-07P	PNP 3 wire solid state auto switch Normally open (output) Operating voltage 5-30 V DC Yellow LED indicator 1m cable IP67 rated surge protection	£24.98

**VBC SERIES
MAGNETIC SWITCH**



3610

PART NUMBER	DESCRIPTION	PRICE
EM-HX-21R	Standard 2 wire reed switch Normally open Operating voltage 5-240 V DC/AC 1 m cable IP67 rated surge protection	£8.96
EM-HX-21N	NPN 3 wire solid state auto switch Normally open (input) Operating voltage 5-30 V DC Red LED indicator 1 m cable IP67 rated surge protection	£30.26
EM-HX-21P	PNP 3 wire solid state auto switch Normally open (output) Operating voltage 5-30 V DC Yellow LED indicator 1 m cable IP67 rated surge protection	£30.26

**HX-01 MAGNETIC SWITCH
FOR USE WITH
SE SERIES**

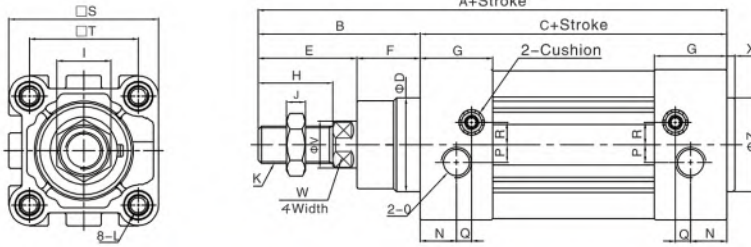


3610

PART NUMBER	DESCRIPTION	PRICE
EM-HX-01R	Standard reed switch 2 wire Normally open Operating voltage 5-240 V DC/AC Red LED indicator 1 m flying lead IP67 rated	£9.84
EM-HX-01N	NPN 3 wire solid state auto switch Normally open (input) Operating voltage 5-30 V DC Red LED indicator 1 m flying lead IP67 rated	£29.50
EM-HX-01P	PNP 3 wire solid state auto switch Normally open (output) Operating voltage 5-30 V DC Yellow LED indicator 1 m flying lead IP67 rated surge protection	£29.50

EMC-FVBC SERIES

FVBC

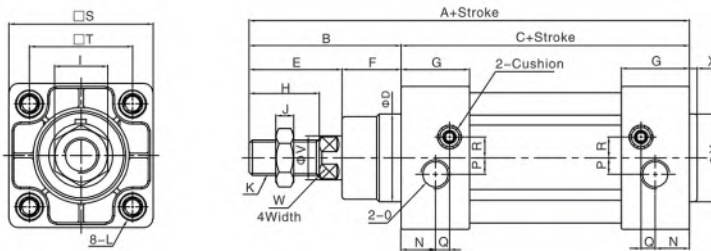


Bore/Sign	A	B	C	D	E	F	G	H	I	J	K	L	N	O	P	Q	R	S	T	V	W	X	Z
32	142	48	94	30	29	19	27.5	22	17	6	M10x1.25	M6 Dp.16	13	1/8"	5.5	6	6	46.5	32.5	12	10	3	30
40	159	54	105	35	33	21	32	24	17	7	M12x1.25	M6 Dp.16	17	1/4"	6	7.5	8.5	54	38	16	13	3.5	35
50	175	69	106	40	42	27	31	32	23	8	M16x1.5	M8 Dp.16	15.5	1/4"	7.5	6.5	9.5	64	46.5	20	17	3.5	40
63	190	69	121	45	42	27	33	32	23	8	M16x1.5	M8 Dp.16	16.5	3/8"	7.5	7.5	11.5	75	56.5	20	17	4	45
80	214	86	128	45	53	33	33	40	26	10	M20x1.5	M10 Dp.17	16.5	3/8"	8	8.5	12.5	93	72	25	22	4	45
100	229	91	138	55	55	36	37	40	26	10	M20x1.5	M10 Dp.17	19.5	1/2"	10	7	12	110	89	25	22	4	55

Note:With magnet and without magnet,the dimensions are same.

EMC-VBC SERIES

VBC



Bore/Sign	A	B	C	D	E	F	G	H	I	J	K	L	N	O	P	Q	R	S	T	V	W	X	Y
32	142	48	94	30	29	19	27.5	22	17	6	M10x1.25	M6 depth16	13	1/8"	5.5	6	6	47	32.5	12	10	3	30
40	159	54	105	35	33	21	32	24	17	7	M12x1.25	M6 depth16	17	1/4"	6	7.5	8.5	53	38	16	13	3.5	35
50	175	69	106	40	42	27	31	32	23	8	M16x1.5	M8 depth16	15.5	1/4"	7.5	6.5	9.5	65	46.5	20	17	3.5	40
63	190	69	121	45	42	27	33	32	23	8	M16x1.5	M8 depth16	16.5	3/8"	7.5	7.5	11.5	75	56.5	20	17	4	45
80	214	86	128	45	53	33	33	40	26	10	M20x1.5	M10 depth17	16.5	3/8"	9	7.5	13.5	95	72	25	22	4	45
100	229	91	138	55	55	36	37	40	26	10	M20x1.5	M10 depth17	18.5	1/2"	9.5	8.5	13.5	115	89	25	22	4	55
125	279	119	160	60	74	45	46	54	41	13.5	M27x2.0	M12 depth20	23	1/2"	14	12	14	140	110	32	27	-	-
160	332	152	180	65	94	58	50	72	55	18	M36x2.0	M16 depth24	25	3/4"	15	12	20	180	140	40	36	-	-
200	347	167	180	75	110	57	50	72	55	18	M36x2.0	M16 depth24	25	3/4"	-	-	-	220	175	40	36	-	-
250	388	188	200	90	121	67	52	84	65	21	M42x2.0	M20 depth25	26.5	1"	20.5	7.5	21	270	220	50	45	10	90

Note:With magnet and without magnet,the dimensions are same.

SQN COMPACT SERIES

DESCRIPTION

SQN series compact pneumatic cylinder, bore size ranges from 12 – 100 mm, with grease and all dynamic seals imported. Stronger self-lubricating bronze bearings give high guiding performance and concentricity for the compact cylinder, while piston rod and rod connection is designed with rotary riveting structure, ensuring high concentricity, smooth running and low starting pressure.

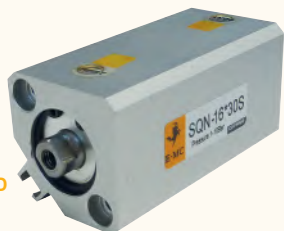
The compact cylinder is designed with slots for magnetic switches in 3 sides, easier to mount. Rear cap and cylinder body are riveted together with superior assembling reliability, while front cap and barrel are connected by buckle for easier maintenance.

FEATURES

- All dynamic seals from Japan, with German grease, longer life
- Strong self-lubricating bronze bearings, high lateral loading performance
- Piston rod and rod connection is rotary riveted, high concentricity
- Rear cover and body are riveted together, reliable

SPECIFICATIONS

Cylinder type	Double acting, magnetic positioning
Max. working pressure	10 bar
Operating temperature	-20°C to +80°C (dry air)
Available bore size	ø16, ø20, ø25, ø32, ø40, 50 mm
Available stroke length	0-100 mm
Cushion type	Anti-bump cushioning
Mounting type	Through hole mounting



SQN SERIES DIAMOND PROFILE CYLINDER

16 BORE

3620

PART NUMBER	BORE	STROKE	PRICE
EM-SQN16X30-S	16 mm	30 mm	£20.36

20 BORE

EM-SQN20X10-S	20 mm	10 mm	£17.93
EM-SQN20X15-S	20 mm	15 mm	£18.74
EM-SQN20X20-S	20 mm	20 mm	£19.56
EM-SQN20X25-S	20 mm	25 mm	£20.37
EM-SQN20X30-S	20 mm	30 mm	£21.19
EM-SQN20X40-S	20 mm	40 mm	£22.82
EM-SQN20X50-S	20 mm	50 mm	£24.45

25 BORE

EM-SQN25X10-S	25 mm	10 mm	£18.74
EM-SQN25X15-S	25 mm	15 mm	£19.56
EM-SQN25X20-S	25 mm	20 mm	£20.37
EM-SQN25X25-S	25 mm	25 mm	£21.19
EM-SQN25X30-S	25 mm	30 mm	£22.00
EM-SQN25X40-S	25 mm	40 mm	£23.64
EM-SQN25X50-S	25 mm	50 mm	£25.27

SQN SERIES SQUARE PROFILE CYLINDER

32 BORE

3620

PART NUMBER	BORE	STROKE	PRICE
EM-SQN32X10-S	32 mm	10 mm	£22.32
EM-SQN32X15-S	32 mm	15 mm	£23.38
EM-SQN32X20-S	32 mm	20 mm	£24.45
EM-SQN32X25-S	32 mm	25 mm	£25.51
EM-SQN32X30-S	32 mm	30 mm	£26.56
EM-SQN32X40-S	32 mm	40 mm	£28.69
EM-SQN32X50-S	32 mm	50 mm	£30.82

40 BORE

EM-SQN40X10-S	40 mm	10 mm	£27.14
EM-SQN40X15-S	40 mm	15 mm	£28.21
EM-SQN40X20-S	40 mm	20 mm	£29.27
EM-SQN40X25-S	40 mm	25 mm	£30.32
EM-SQN40X30-S	40 mm	30 mm	£31.40
EM-SQN40X40-S	40 mm	40 mm	£33.51
EM-SQN40X50-S	40 mm	50 mm	£35.63

50 BORE

EM-SQN50X10-S	50 mm	10 mm	£31.90
EM-SQN50X15-S	50 mm	15 mm	£33.31
EM-SQN50X20-S	50 mm	20 mm	£34.73
EM-SQN50X25-S	50 mm	25 mm	£36.15
EM-SQN50X30-S	50 mm	30 mm	£37.21
EM-SQN50X40-S	50 mm	40 mm	£40.05
EM-SQN50X50-S	50 mm	50 mm	£42.89

Available upon request:
 - 80/100 mm bore
 - Single acting male threaded piston rods
 - Single acting cylinder with spring return / spring extend

Additional strokes available on all bore sizes

SF SERIES

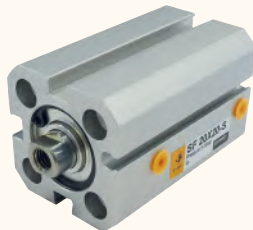
DESCRIPTION

SF series ISO21287 standard compact pneumatic cylinder, bore size ranges from 20 – 100 mm. Stronger self-lubricating bronze bearings give high guiding performance and concentricity for the compact cylinder, while piston rod and rod connection is designed with rotary riveting structure, ensuring high concentricity, smooth running and low starting pressure.

The compact cylinder is designed with slots for magnetic switches in 4 sides, while various mountings are available. Rear cap and cylinder body are riveted together with superior assembling reliability, while front cap and barrel are connected by buckle for easier maintenance.

SPECIFICATIONS

Cylinder type	Double acting, magnetic positioning
Max. working pressure	10 bar
Operating temperature	-20°C to +80°C (dry air)
Available bore size	ø20 – 100 mm
Available stroke length	10 – 50 mm
Cushion type	Rubber



3620

SF SERIES

20 BORE

PART NUMBER	BORE	STROKE	PRICE
EM-SF20X10-S	20 mm	10 mm	£21.91
EM-SF20X15-S	20 mm	15 mm	£22.56
EM-SF20X20-S	20 mm	20 mm	£23.29
EM-SF20X25-S	20 mm	25 mm	£23.87
EM-SF20X30-S	20 mm	30 mm	£24.52
EM-SF20X40-S	20 mm	40 mm	£25.82
EM-SF20X50-S	20 mm	50 mm	£27.12

25 BORE

EM-SF25X10-S	25 mm	10 mm	£25.47
EM-SF25X15-S	25 mm	15 mm	£26.22
EM-SF25X20-S	25 mm	20 mm	£26.98
EM-SF25X25-S	25 mm	25 mm	£27.73
EM-SF25X30-S	25 mm	30 mm	£28.48
EM-SF25X40-S	25 mm	40 mm	£29.98
EM-SF25X50-S	25 mm	50 mm	£31.50

32 BORE

EM-SF32X10-S	32 mm	10 mm	£27.44
EM-SF32X15-S	32 mm	15 mm	£28.09
EM-SF32X20-S	32 mm	20 mm	£28.75
EM-SF32X25-S	32 mm	25 mm	£29.40
EM-SF32X30-S	32 mm	30 mm	£30.05
EM-SF32X40-S	32 mm	40 mm	£31.35
EM-SF32X50-S	32 mm	50 mm	£32.63

FEATURES / BENEFITS

ISO21287 standard cylinder

Compact structure, 50% space saving compared to ISO15552 standard pneumatic cylinders

Double-ended cushion gasket, provides smooth reversing, less impact and mechanical damage

Rotary riveted piston rod and rod connection, offering high concentricity

Riveted rear cover and body for reliability

You may also need ...

Speed controllers



... on pages 603 – 607, section 11

40 BORE

PART NUMBER	BORE	STROKE	PRICE
EM-SF40X10-S	40 mm	10 mm	£29.18
EM-SF40X15-S	40 mm	15 mm	£29.92
EM-SF40X20-S	40 mm	20 mm	£30.67
EM-SF40X25-S	40 mm	25 mm	£31.42
EM-SF40X30-S	40 mm	30 mm	£32.19
EM-SF40X40-S	40 mm	40 mm	£32.16
EM-SF40X50-S	40 mm	50 mm	£35.19

50 BORE

EM-SF50X10-S	50 mm	10 mm	£35.15
EM-SF50X15-S	50 mm	15 mm	£36.07
EM-SF50X20-S	50 mm	20 mm	£37.00
EM-SF50X25-S	50 mm	25 mm	£37.92
EM-SF50X30-S	50 mm	30 mm	£38.85
EM-SF50X40-S	50 mm	40 mm	£40.70
EM-SF50X50-S	50 mm	50 mm	£42.54

63 BORE

EM-SF63X10-S	63 mm	10 mm	£43.73
EM-SF63X15-S	63 mm	15 mm	£44.90
EM-SF63X20-S	63 mm	20 mm	£46.07
EM-SF63X25-S	63 mm	25 mm	£47.22
EM-SF63X30-S	63 mm	30 mm	£48.39
EM-SF63X40-S	63 mm	40 mm	£50.73
EM-SF63X50-S	63 mm	50 mm	£53.05

EXS-M SERIES

DESCRIPTION

The EXS-M is a twin rod precision guided cylinder with a slide bearing. It features a double cylinder construction for increased force from a compact profile and good resistance to side loads. The cylinder has a number of mounting points. Adjustable return stroke cushion 0 – 5 mm.

SPECIFICATIONS

Cylinder type	Double acting, magnetic positioning
Max. working pressure	10 bar
Operating temperature	-20°C to +80°C (dry air)
Available bore sizes	ø6 – 32 mm
Available stroke length	25 – 200 mm
Cushion type	Cushioned both ends, adjustable on return stroke 0 – 5mm



3660

EXS SERIES GUIDED CYLINDER

10 BORE

PART NUMBER	BORE	STROKE	PRICE
EM-EXSM10X25-S	10 mm	25 mm	£128.25
EM-EXSM10X75-S	10 mm	75 mm	£165.06

16 BORE

EM-EXSM16X25-S	16 mm	25 mm	£135.51
EM-EXSM16X50-S	16 mm	50 mm	£149.08
EM-EXSM16X75-S	16 mm	75 mm	£174.72

20 BORE

EM-EXSM20X10-S	20 mm	10 mm	£141.32
EM-EXSM20X25-S	20 mm	25 mm	£157.29
EM-EXSM20X50-S	20 mm	50 mm	£182.48
EM-EXSM20X75-S	20 mm	75 mm	£201.83

25 BORE

EM-EXSM25X25-S	25 mm	25 mm	£167.46
EM-EXSM25X50-S	25 mm	50 mm	£191.66
EM-EXSM25X75-S	25 mm	75 mm	£217.80

32 BORE

EM-EXSM32X25-S	32 mm	25 mm	£214.90
EM-EXSM32X50-S	32 mm	50 mm	£253.13
EM-EXSM32X75-S	32 mm	75 mm	£282.67

Alternative stroke sizes available upon request

SGM SERIES

DESCRIPTION

The SGM cylinder is a triple rod, heavy duty, guided cylinder with a slide bearing. The construction offers a strong resistance to side load forces and has a number of mounting points for convenient installation.

SPECIFICATIONS

Cylinder type	Double acting, magnetic positioning
Max. working pressure	10 bar
Operating temperature	-20°C to +80°C (dry air)
Available bore sizes	ø12 – 63 mm
Available stroke sizes	25 – 250 mm
Cushion type	Rubber cushioned



3660

SGM SERIES TRIPLE ROD GUIDED CYLINDER

12 BORE

PART NUMBER	BORE	STROKE	PRICE
EM-SGM12X25-S	12 mm	25 mm	£124.76
EM-SGM12X50-S	12 mm	50 mm	£141.63
EM-SGM12X75-S	12 mm	75 mm	£150.78

16 BORE

EM-SGM16X25-S	16 mm	25 mm	£130.34
EM-SGM16X50-S	16 mm	50 mm	£147.21
EM-SGM16X75-S	16 mm	75 mm	£156.37

20 BORE

EM-SGM20X25-S	20 mm	25 mm	£144.86
EM-SGM20X50-S	20 mm	50 mm	£163.57
EM-SGM20X75-S	20 mm	75 mm	£173.74

25 BORE

EM-SGM25X25-S	25 mm	25 mm	£173.35
EM-SGM25X50-S	25 mm	50 mm	£193.28
EM-SGM25X75-S	25 mm	75 mm	£204.29

32 BORE

EM-SGM32X25-S	32 mm	25 mm	£231.12
EM-SGM32X50-S	32 mm	50 mm	£250.64
EM-SGM32X75-S	32 mm	75 mm	£288.89

40 BORE

EM-SGM40X25-S	40 mm	25 mm	£247.40
EM-SGM40X50-S	40 mm	50 mm	£268.15
EM-SGM40X75-S	40 mm	75 mm	£305.17

50 BORE

EM-SGM50X25-S	50 mm	25 mm	£281.58
EM-SGM50X50-S	50 mm	50 mm	£305.98
EM-SGM50X75-S	50 mm	75 mm	£346.69

63 BORE

EM-SGM63X25-S	63 mm	25 mm	£325.53
EM-SGM63X50-S	63 mm	50 mm	£354.82
EM-SGM63X75-S	63 mm	75 mm	£408.94



A TYPE SILENCER
BRASS & SINTERED BRONZE

3690

PART NUMBER	DB LEVEL (6 BAR)	THREAD SIZE	PRICE
EM-A-M5	-	M5	£0.60
EM-A-06G	76	1/8" BSPP	£0.80
EM-A-08G	75	1/4" BSPP	£1.33
EM-A-10G	88	3/8" BSPP	£2.27
EM-A-15G	89	1/2" BSPP	£2.93
EM-A-20G	92 @ 4 bar	3/4" BSPP	£5.72
EM-A-25G	-	1" BSPP	£10.65
EM-A-32G	-	1 1/4" BSPP	£30.61
EM-A-40G	-	1 1/2" BSPP	£39.93
EM-A-50G	-	2" BSPP	£57.23



EXHAUST SILENCER
WITH FLOW CONTROL
BRASS & SINTERED BRONZE

3690

PART NUMBER	DB LEVEL (6 BAR)	THREAD SIZE	PRICE
EM-SD-06G	72	1/8" BSPP	£1.93
EM-SD-08G	73	1/4" BSPP	£2.53
EM-SD-10G	84	3/8" BSPP	£4.26
EM-SD-15G	88	1/2" BSPP	£7.19
EM-SD-20G	92 @ 4 bar	3/4" BSPP	£15.31
EM-SD-25G	92 @ 4 bar	1" BSPP	£27.28



SET TYPE SILENCER
BRASS & SINTERED BRONZE

3690

PART NUMBER	DB LEVEL (6 BAR)	THREAD SIZE	PRICE
EM-SET-06G	81	1/8" BSPP	£1.45
EM-SET-08G	83	1/4" BSPP	£2.21
EM-SET-10G	87	3/8" BSPP	£4.65
EM-SET-15G	90	1/2" BSPP	£7.86
EM-SET-20G	-	3/4" BSPP	£14.97
EM-SET-25G	92 @ 4 bar	1" BSPP	£24.33



AAS TYPE SILENCER
STAINLESS STEEL 304

3690

PART NUMBER	THREAD SIZE	PRICE
EM-AAS-M5	M5	£3.99
EM-AAS-06G	1/8" BSPP	£4.86
EM-AAS-08G	1/4" BSPP	£7.32
EM-AAS-10G	3/8" BSPP	£12.65
EM-AAS-15G	1/2" BSPP	£16.64
EM-AAS-20G	3/4" BSPP	£37.27
EM-AAS-25G	1" BSPP	£62.56



V TYPE SILENCER

3690

PART NUMBER	DB LEVEL (6 BAR)	THREAD SIZE	PRICE
EM-V-06G	73	1/8" BSPP	£0.61
EM-V-08G	74	1/4" BSPP	£0.93
EM-V-10G	85	3/8" BSPP	£1.33
EM-V-15G	89	1/2" BSPP	£1.90
EM-V-20G	90	3/4" BSPP	£3.33
EM-V-25G	90	1" BSPP	£6.07



VDS TYPE SILENCER
STAINLESS STEEL 304

3690

PART NUMBER	THREAD SIZE	PRICE
EM-VDS-M5	M5	£4.36
EM-VDS-06G	1/8" BSPP	£5.80
EM-VDS-08G	1/4" BSPP	£8.71
EM-VDS-10G	3/8" BSPP	£13.55
EM-VDS-15G	1/2" BSPP	£19.35
EM-VDS-20G	3/4" BSPP	£31.93
EM-VDS-25G	1" BSPP	£49.34



VD DOME TYPE SILENCER
BRASS

3690

PART NUMBER	DB LEVEL (6 BAR)	THREAD SIZE	PRICE
EM-VD-06G	74	1/8" BSPP	£3.12
EM-VD-08G	72	1/4" BSPP	£4.16
EM-VD-10G	88	3/8" BSPP	£5.73
EM-VD-15G	90	1/2" BSPP	£7.29
EM-VD-20G	90	3/4" BSPP	£10.41
EM-VD-25G	92	1" BSPP	£17.69



VSS TYPE SILENCER
STAINLESS STEEL 304

3690

PART NUMBER	THREAD SIZE	PRICE
EM-VSS-M5	M5	£3.02
EM-VSS-06S1G	1/8" BSPP	£4.26
EM-VSS-08S1G	1/4" BSPP	£5.99
EM-VSS-10G	3/8" BSPP	£8.83
EM-VSS-15G	1/2" BSPP	£11.52
EM-VSS-20G	3/4" BSPP	£21.81
EM-VSS-25G	1" BSPP	£36.34



SU TYPE SILENCER
ACETAL RESIN

3690



AB TYPE SILENCER

3690

PART NUMBER	DB LEVEL (6 BAR)	THREAD SIZE	PRICE
EM-SU-06OG	87	1/8" BSPP	£0.56
EM-SU-08OG	84	1/4" BSPP	£0.67
EM-SU-10OG	90	3/8" BSPP	£0.93
EM-SU-15OG	90	1/2" BSPP	£1.07
EM-SU-20OG	91	3/4" BSPP	£7.99
EM-SU-25OG	90	1" BSPP	£9.32

PART NUMBER	THREAD SIZE	PRICE
EM-AB-06G	1/8" BSPP	£8.10
EM-AB-08G	1/4" BSPP	£10.50
EM-AB-10G	3/8" BSPP	£13.40
EM-AB-15G	1/2" BSPP	£22.39
EM-AB-20G	3/4" BSPP	£27.92
EM-AB-25G	1" BSPP	£46.13
EM-AB-32G	1 1/4" BSPP	£181.67
EM-AB-40G	1 1/2" BSPP	£234.78
EM-AB-50G	2" BSPP	£301.85

Six



PSU TYPE SILENCER

3690



SC TYPE SILENCER

3690

PART NUMBER	THREAD SIZE	PRICE
EM-PSU-06OG	1/8" BSPP	£0.76
EM-PSU-08OG	1/4" BSPP	£1.07
EM-PSU-10OG	3/8" BSPP	£2.05
EM-PSU-15OG	1/2" BSPP	£3.12
EM-PSU-20OG	3/4" BSPP	£6.80
EM-PSU-25OG	1" BSPP	£10.21

PART NUMBER	THREAD SIZE	PRICE
EM-SC-06G	1/8" BSPP	£3.19
EM-SC-08G	1/4" BSPP	£4.13
EM-SC-10G	3/8" BSPP	£5.33
EM-SC-15G	1/2" BSPP	£8.85
EM-SC-20G	3/4" BSPP	£15.20
EM-SC-25G	1" BSPP	£34.47



PSE TYPE SILENCER

3690



SK TYPE SILENCER

3690

PART NUMBER	THREAD SIZE	PRICE
EM-PSE-M5	M5	£0.95
EM-PSE-06G	1/8" BSPP	£1.34
EM-PSE-08G	1/4" BSPP	£1.95
EM-PSE-10G	3/8" BSPP	£4.02
EM-PSE-15G	1/2" BSPP	£4.24
EM-PSE-20G	3/4" BSPP	£12.12
EM-PSE-25G	1" BSPP	£20.61

PART NUMBER	THREAD SIZE	PRICE
EM-SK-06G	1/8" BSPP	£5.20
EM-SK-08G	1/4" BSPP	£6.77
EM-SK-10G	3/8" BSPP	£8.51
EM-SK-15G	1/2" BSPP	£14.57
EM-SK-20G	3/4" BSPP	£30.72
EM-SK-25G	1" BSPP	£44.73



SB TYPE EXHAUST SILENCER
WITH FLOW CONTROL

3690



SPK TYPE SILENCER

3690

PART NUMBER	THREAD SIZE	PRICE
EM-SB-06G	1/8" BSPP	£2.81
EM-SB-08G	1/4" BSPP	£3.17
EM-SB-10G	3/8" BSPP	£4.82
EM-SB-15G	1/2" BSPP	£7.35
EM-SB-20G	3/4" BSPP	£13.17
EM-SB-25G	1" BSPP	£28.39

PART NUMBER	THREAD SIZE	PRICE
EM-SPK-06G	1/8" BSPP	£6.24
EM-SPK-08G	1/4" BSPP	£8.85
EM-SPK-10G	3/8" BSPP	£15.61
EM-SPK-15G	1/2" BSPP	£30.18
EM-SPK-20G	3/4" BSPP	£51.06
EM-SPK-25G	1" BSPP	£62.44

RV SERIES

SPECIFICATIONS

Working medium	Clean air
Working pressure	1.5 – 8 bar
Guaranteed pressure	12 bar
Working temperature	-20°C to +70°C (dry air)
Valve type	3/2, 5/2 and 5/3
Acting type	Internal pilot / external pilot type



RV SERIES PILOT VALVE 3/2 SINGLE PILOT NORMALLY CLOSED SPRING RETURN



3630

RV SERIES PILOT VALVE 5/3 DOUBLE PILOT CENTRE CLOSED



3630

PART NUMBER	FUNCTION	BODY SIZE	PORT SIZE	PRICE
● EM-RVA3211-06Q	3/2	18 mm	1/8"	£40.00
● EM-RVA3221-08Q	3/2	22 mm	1/4"	£38.01
● EM-RVA3231-10Q	3/2	27 mm	3/8"	£46.71
● EM-RVA3241-15	3/2	34 mm	1/2"	£75.02

* Air return for products ending in Q

PART NUMBER	FUNCTION	BODY SIZE	EXHAUST	INLET	PRICE
● EM-RVA5312C-06	5/3	18 mm	1/8"	1/8"	£96.18
● EM-RVA5322C-08	5/3	22 mm	1/8"	1/4"	£80.31
● EM-RVA5332C-10	5/3	27 mm	1/4"	3/8"	£104.45
● EM-RVA5342C-15	5/3	34 mm	1/2"	1/2"	£133.96

RV SERIES PILOT VALVE 3/2 DOUBLE PILOT NORMALLY CLOSED



3630

RV SERIES PILOT VALVE 5/3 DOUBLE PILOT PRESSURED CENTRE



3630

PART NUMBER	FUNCTION	BODY SIZE	PORT SIZE	PRICE
● EM-RVA3212-06	3/2	18 mm	1/8"	£53.70
● EM-RVA3222-08	3/2	22 mm	1/4"	£55.28
● EM-RVA3232-10	3/2	27 mm	3/8"	£65.59
● EM-RVA3242-15	3/2	34 mm	1/2"	£99.93

PART NUMBER	FUNCTION	BODY SIZE	EXHAUST	INLET	PRICE
● EM-RVA5312P-06	5/3	18 mm	1/8"	1/8"	£133.96
● EM-RVA5322P-08	5/3	22 mm	1/8"	1/4"	£80.31
● EM-RVA5332P-10	5/3	27 mm	1/4"	3/8"	£104.45
● EM-RVA5342P-15	5/3	34 mm	1/2"	1/2"	£133.96

RV SERIES PILOT VALVE 5/2 SINGLE PILOT SPRING RETURN



3630

RV SERIES PILOT VALVE 5/3 DOUBLE PILOT CENTRE EXHAUST



3630

PART NUMBER	FUNCTION	BODY SIZE	EXHAUST	INLET	PRICE
● EM-RVA5211-06Q	5/2	18 mm	1/8"	1/8"	£38.14
● EM-RVA5221-08Q	5/2	22 mm	1/8"	1/4"	£36.26
● EM-RVA5231-10Q	5/2	27 mm	1/4"	3/8"	£44.45
● EM-RVA5241-15	5/2	34 mm	1/2"	1/2"	£71.42

* Air return for products ending in Q

PART NUMBER	FUNCTION	BODY SIZE	EXHAUST	INLET	PRICE
● EM-RVA5312E-06	5/3	18 mm	1/8"	1/8"	£96.18
● EM-RVA5322E-08	5/3	22 mm	1/8"	1/4"	£80.31
● EM-RVA5332E-10	5/3	27 mm	1/4"	3/8"	£104.45
● EM-RVA5342E-15	5/3	34 mm	1/2"	1/2"	£133.96

RV SERIES PILOT VALVE 5/2 DOUBLE PILOT

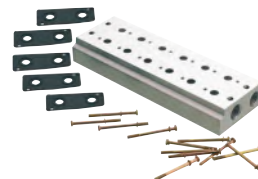


3630

PART NUMBER	FUNCTION	BODY SIZE	EXHAUST	INLET	PRICE
● EM-RVA5212-06	5/2	18 mm	1/8"	1/8"	£53.70
● EM-RVA5222-08	5/2	22 mm	1/8"	1/4"	£52.67
● EM-RVA5232-10	5/2	27 mm	1/4"	3/8"	£62.48
● EM-RVA5242-15	5/2	34 mm	1/2"	1/2"	£102.09

You may also need ...

Manifolds



... on page 349, section 6

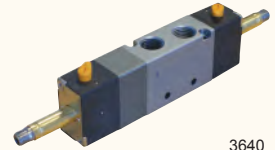
RV SERIES – BODY ONLY

SPECIFICATIONS

Working medium	Clean air
Working pressure	1.5 – 8 bar
Guaranteed pressure	12 bar
Working temperature	-20°C to +70°C (dry air)
Valve type	3/2, 5/2 and 5/3
Acting type	Pilot type

IP65 RATED

IP65 = Dust tight; full protection & protection against directed water jets of low pressure (6.3 mm) from any angle this is only if the din plug (din43650/pg9) is correctly fitted to coil with the rubber seal in place.



3640

RV SERIES

3/2 SINGLE SOLENOID NORMALLY CLOSED



3640

RV SERIES

5/3 DOUBLE SOLENOID CENTRE CLOSED

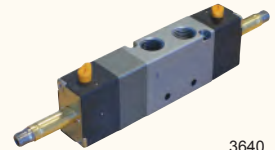
PART NUMBER	FUNCTION	BODY SIZE	EXHAUST	INLET	PRICE
● EM-RV5312C-06-WX	5/3	18 mm	1/8"	1/8"	£106.69
● EM-RV5322C-08-WX	5/3	22 mm	1/4"	1/4"	£102.56
● EM-RV5342C-15-WX	5/3	34 mm	1/2"	1/2"	£174.77

PART NUMBER	FUNCTION	BODY SIZE	PORT SIZE	PRICE
● EM-RV3211-06Q-WX	3/2	18 mm	1/8"	£43.53
● EM-RV3221-08Q-WX	3/2	22 mm	1/4"	£36.60
● EM-RV3241-15-WX	3/2	34 mm	1/2"	£92.66

* Air return available for products ending in Q

RV SERIES

5/3 DOUBLE SOLENOID PRESSURE HELD



3640

RV SERIES

3/2 DOUBLE SOLENOID NORMALLY CLOSED



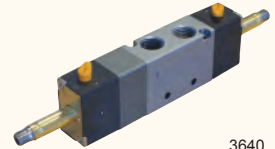
3640

PART NUMBER	FUNCTION	BODY SIZE	EXHAUST	INLET	PRICE
● EM-RV5312P-06-WX	5/3	18 mm	1/8"	1/8"	£110.59
● EM-RV5322P-08-WX	5/3	22 mm	1/4"	1/4"	£102.56
● EM-RV5342P-15-WX	5/3	34 mm	1/2"	1/2"	£174.77

PART NUMBER	FUNCTION	BODY SIZE	PORT SIZE	PRICE
● EM-RV3212-06-WX	3/2	18 mm	1/8"	£75.61
● EM-RV3222-08-WX	3/2	22 mm	1/4"	£68.64
● EM-RV3242-15-WX	3/2	34 mm	1/2"	£135.93

RV SERIES

5/3 DOUBLE SOLENOID PRESSURE EXHAUST



3640

RV SERIES

5/2 SINGLE SOLENOID



3640

PART NUMBER	FUNCTION	BODY SIZE	EXHAUST	INLET	PRICE
● EM-RV5312E-06-WX	5/3	18 mm	1/8"	1/8"	£110.59
● EM-RV5322E-08-WX	5/3	22 mm	1/4"	1/4"	£102.56
● EM-RV5342E-15-WX	5/3	34 mm	1/2"	1/2"	£174.77

PART NUMBER	FUNCTION	BODY SIZE	EXHAUST	INLET	PRICE
● EM-RV5211-06Q-WX	5/2	18 mm	1/8"	1/8"	£43.53
● EM-RV5221-08Q-WX	5/2	22 mm	1/8"	1/4"	£36.60
● EM-RV5241-15-WX	5/2	34 mm	1/2"	1/2"	£92.66

* Air return available for products ending in Q

STANDARD NAMUR SOLENOID VALVES

FEATURES

- Life cycle of 12,000,000 operations
- Manual override control
- 5/2-3/2 Interchangeable
- Various voltages are available

SPECIFICATIONS

Working pressure	1.5 to 8 bar
Working temperature	-5°C to +60°C

RV SERIES

5/2 DOUBLE SOLENOID



3640

RV SERIES (5/2) (3/2)

NAMUR VALVE SINGLE SOLENOID – BODY ONLY



3640

PART NUMBER	VALVE BODY	PORT SIZE	PRICE
EM-V523231-08MREX	3/8"	1/4"	£38.82

You may also need ... **Coils**



... on page 349, section 6

Symbol key fit together



RV SERIES ACCESSORIES



3640

RV SERIES COIL C/W PLUG FOR USE WITH 1/8" VALVES

PART NUMBER	VOLTAGE	PRICE
● EM-XHD-V1-E1	110 / 50 V AC & 22	£7.99
● EM-XHD-V1-E2	220 / 50 V AC	£7.99
● EM-XHD-V1-E4	24 V DC	£7.99
● EM-XHD-V1-E5	12 V DC / 24 V AC	£7.99

FOR USE WITH 1/4" & 1/2" VALVES

● EM-XHD-V2-E1	110 / 50 V AC	£7.66
● EM-XHD-V2-E2	220 / 50 V AC	£7.66
● EM-XHD-V2-E4	24 V DC	£7.66
● EM-XHD-V2-E5	12 V DC / 24 V AC	£7.66

IP65 RATED

IP65 = Dust tight; full protection & protection against directed water jets of low pressure (6.3mm) from any angle this is only if the din plug (din43650/pg9) is correctly fitted to coil with the rubber seal in place.



3640

RV SERIES PLUG CONNECTOR (din43650/pg9) FOR USE WITH 1/8" VALVES

PART NUMBER	VOLTAGE	PRICE
● EM-DC-A2TEL	110 / 50 V AC & 220 / 50 V AC	£2.38
● EM-DC-A1TEL	24 V AC	£2.38
● EM-DC-D1TEL	12 V DC / 24 V DC	£2.38

FOR USE WITH 1/4" & 1/2" VALVES

● EM-DB-A2ELR	110 / 50 V AC & 220 / 50 V AC	£3.21
● EM-DB-A1ELR	24 V AC	£3.21
● EM-DB-D1ELR	12 V DC / 24 V DC	£3.21



3640

BLANKING PLATES 3 WAY

PART NUMBER	BODY SIZE	PORT SIZE	PRICE
● EM-VBP321	18 mm	1/8"	£2.64
● EM-VBP322	22 mm	1/4"	£2.64
● EM-VBP324	34 mm	1/2"	£2.77

5 WAY

● EM-VBP521	18 mm	1/8"	£2.64
● EM-VBP522	22 mm	1/4"	£2.64
● EM-VBP524	34 mm	1/2"	£2.97



3640

RV SERIES MANIFOLD FOR USE WITH 3/2 VALVES

PART NUMBER	NO. OF VALVES	BODY SIZE	PORT SIZE	PRICE
● EM-V321-2F	2	18 mm	1/8"	£13.33
● EM-V321-4F	4	18 mm	1/8"	£23.96
● EM-V321-6F	6	18 mm	1/8"	£34.58
● EM-V321-8F	8	18 mm	1/8"	£45.21
● EM-V321-10F	10	18 mm	1/8"	£56.10
● EM-V322-2F	2	22 mm	1/4"	£13.33
● EM-V322-4F	4	22 mm	1/4"	£24.02
● EM-V322-6F	6	22 mm	1/4"	£34.72
● EM-V322-8F	8	22 mm	1/4"	£45.41
● EM-V322-10F	10	22 mm	1/4"	£56.03
● EM-V324-2F	2	34 mm	1/2"	£43.43
● EM-V324-4F	4	34 mm	1/2"	£79.07
● EM-V324-6F	6	34 mm	1/2"	£114.71
● EM-V324-8F	8	34 mm	1/2"	£150.35
● EM-V324-10F	10	34 mm	1/2"	£185.99

FOR USE WITH 5/2 & 5/3 VALVES

● EM-V521-2F	2	18 mm	1/8"	£13.33
● EM-V521-4F	4	18 mm	1/8"	£24.02
● EM-V521-6F	6	18 mm	1/8"	£34.72
● EM-V521-8F	8	18 mm	1/8"	£45.41
● EM-V521-10F	10	18 mm	1/8"	£56.10
● EM-V522-2F	2	22 mm	1/4"	£12.21
● EM-V522-4F	4	22 mm	1/4"	£21.98
● EM-V522-6F	6	22 mm	1/4"	£31.75
● EM-V522-8F	8	22 mm	1/4"	£41.51
● EM-V522-10F	10	22 mm	1/4"	£51.28
● EM-V524-2F	2	34 mm	1/2"	£38.08
● EM-V524-4F	4	34 mm	1/2"	£68.57
● EM-V524-6F	6	34 mm	1/2"	£99.07
● EM-V524-8F	8	34 mm	1/2"	£129.56
● EM-V524-10F	10	34 mm	1/2"	£160.05

VP SERIES SOLENOID VALVES



3640

VP SERIES (3/2) SINGLE SOLENOID - 24 V DC

PART NUMBER	FUNCTION	VALVE BODY	PORT SIZE	PRICE
EM-VP321-06E4	3/2	18 mm	1/8"	£32.54

Symbol key
fit together



SR SERIES ACCESSORIES

Six



SR SERIES INTEGRATED MANIFOLD (PLUG-IN TYPE)
COMPLETE WITH 5/2 SOL/SPRING VALVES

3640

PART NUMBER	NO. OF VALVES	BODY SIZE	PORT SIZE	PRICE
EM-S1R3S-06E4	3	1 Series	1/8"	£128.77
EM-S1R4S-06E4	4	1 Series	1/8"	£166.89
EM-S1R5S-06E4	5	1 Series	1/8"	£207.50
EM-S1R6S-06E4	6	1 Series	1/8"	£248.13
EM-S1R7S-06E4	7	1 Series	1/8"	£288.74
EM-S1R8S-06E4	8	1 Series	1/8"	£329.35
EM-S1R9S-06E4	9	1 Series	1/8"	£369.98
EM-S1R10S-06E4	10	1 Series	1/8"	£410.59
EM-S1R11S-06E4	11	1 Series	1/8"	£451.20
EM-S1R12S-06E4	12	1 Series	1/8"	£491.81
EM-S1R13S-06E4	13	1 Series	1/8"	£532.44
EM-S1R14S-06E4	14	1 Series	1/8"	£573.05
EM-S2R3S-08E4	3	2 Series	1/4"	£135.41
EM-S2R4S-08E4	4	2 Series	1/4"	£170.21
EM-S2R5S-08E4	5	2 Series	1/4"	£211.57
EM-S2R6S-08E4	6	2 Series	1/4"	£252.94
EM-S2R7S-08E4	7	2 Series	1/4"	£294.28
EM-S2R8S-08E4	8	2 Series	1/4"	£335.64
EM-S2R9S-08E4	9	2 Series	1/4"	£376.97
EM-S2R10S-08E4	10	2 Series	1/4"	£418.34
EM-S2R11S-08E4	11	2 Series	1/4"	£459.70
EM-S2R12S-08E4	12	2 Series	1/4"	£501.04
EM-S2R13S-08E4	13	2 Series	1/4"	£542.41
EM-S2R14S-08E4	14	2 Series	1/4"	£583.77

New

15 PIN D SUB CONNECTOR



3640

PART NUMBER	CORE	LENGTH	PRICE
EM-D15-08-5M	8	5 m	£50.04
EM-D15-15-5M	15	5 m	£81.72

New

DIN GUIDE RAIL WITH GUIDE RAIL CLIP



3640

PART NUMBER	DESCRIPTION	PRICE
EM-D	1 m guide rail with clip	£37.74

New

DIN GUIDE RAIL CLIP



3640

PART NUMBER	DESCRIPTION	PRICE
EM-D0	Guide rail clip	£19.32

New

BLANKING PLUG

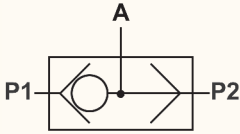


3640

PART NUMBER	SIZE	PRICE
EM-SRBP522	1/4"	£5.34
EM-SRBP521	1/8"	£5.34

SPECIFICATIONS

Control type	Pneumatic
Working pressure	1.5 – 8 bar
Working temperature	-20°C to +70°C



3630

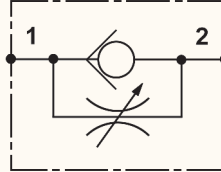
SHUTTLE VALVE (OR GATE)

PART NUMBER	PORT SIZE	PRICE
EM-QS-06	1/8"	£20.42
EM-QS-08	1/4"	£20.42

FLOW REGULATORS

SPECIFICATIONS

Working medium	Clean air
Working pressure	0.5 – 10 bar
Guaranteed pressure	15 bar
Working temperature	-20°C to +70°C



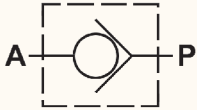
3630

FLOW REGULATOR UNI DIRECTIONAL

PART NUMBER	PORT SIZE	PRICE
EM-QSC-06	1/8"	£16.45
EM-QSC-08	1/4"	£20.90
EM-QSC-10	3/8"	£26.66
EM-QSC-15	1/2"	£26.66

SPECIFICATIONS

Control type	External control
Working pressure	0.5 – 8 bar
Working temperature	-5°C to +60°C



3630

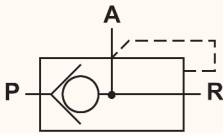
IN-LINE NON-RETURN VALVE

PART NUMBER	PORT SIZE	PRICE
EM-EA-06	1/8"	£14.60
EM-EA-08	1/4"	£14.60
EM-EA-10	3/8"	£26.46
EM-EA-15	1/2"	£26.46

AUTOMATIC VALVES

SPECIFICATIONS

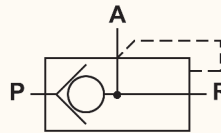
Working pressure	1.5 – 8 bar
Working temperature	-5°C to +60°C



3630

QUICK EXHAUST VALVE

PART NUMBER	PORT SIZE	PRICE
EM-KKP-06	1/8"	£25.29
EM-KKP-08	1/4"	£26.59
EM-KKP-10	3/8"	£41.05
EM-KKP-15	1/2"	£57.98



3630

QUICK EXHAUST VALVE

PART NUMBER	PORT SIZE	PRICE
EM-KKP-20	3/4"	£111.38
EM-KKP-25	1"	£111.38

H SERIES – MANUAL

SPECIFICATIONS

Working medium	Clean air
Working pressure	0 – 8 bar
Guaranteed pressure	12 bar
Working temperature	-5°C to +60°C
Valve type	3/2, 5/2 and 5/3
Seal material	NBR
Acting type	Manual

Six



**3/2 LEVER / SPRING
SPRING RETURN**

3630

PART NUMBER	FUNCTION	PORT SIZE	PRICE
EM-H321-06S	3/2	1/8"	£44.48
EM-H322-08S	3/2	1/4"	£44.48
EM-H323-10S	3/2	3/8"	£52.92
EM-H324-15S	3/2	1/2"	£64.64



**5/3 LEVER / SPRING / LEVER
SPRING TO CENTRE – CENTRES CLOSED**

3630

PART NUMBER	FUNCTION	EXHAUST	INLET	PRICE
EM-H531C-06S	5/3	1/8"	1/8"	£66.46
EM-H532C-08S	5/3	1/8"	1/4"	£66.46
EM-H533C-10S	5/3	1/4"	3/8"	£76.10
EM-H534C-15S	5/3	1/2"	1/2"	£91.28



**3/2 LEVER / LEVER
DETENTED**

3630

PART NUMBER	FUNCTION	PORT SIZE	PRICE
EM-H321-06	3/2	1/8"	£34.20
EM-H322-08	3/2	1/4"	£34.20
EM-H323-10	3/2	3/8"	£40.71
EM-H324-15	3/2	1/2"	£49.69



**5/3 LEVER / SPRING / LEVER
SPRING TO CENTRE – CENTRES EXHAUST**

3630

PART NUMBER	FUNCTION	EXHAUST	INLET	PRICE
EM-H531E-06S	5/3	1/8"	1/8"	£69.02
EM-H532E-08S	5/3	1/8"	1/4"	£69.02
EM-H533E-10S	5/3	1/4"	3/8"	£79.02
EM-H534E-15S	5/3	1/2"	1/2"	£94.79



**5/2 LEVER / SPRING
SPRING RETURN**

3630

PART NUMBER	FUNCTION	EXHAUST	INLET	PRICE
EM-H521-06S	5/2	1/8"	1/8"	£39.34
EM-H522-08S	5/2	1/8"	1/4"	£39.34
EM-H523-10S	5/2	1/4"	3/8"	£57.57
EM-H524-15S	5/2	1/2"	1/2"	£65.80



**5/3 LEVER / SPRING / LEVER
MANUAL – PRESSURED CENTRES**

3630

PART NUMBER	FUNCTION	EXHAUST	INLET	PRICE
EM-H531P-06S	5/3	1/8"	1/8"	£69.02
EM-H532P-08S	5/3	1/8"	1/4"	£69.02
EM-H533P-10S	5/3	1/4"	3/8"	£79.02
EM-H534P-15S	5/3	1/2"	1/2"	£94.79



**5/2 LEVER / LEVER
DETENTED**

3630

PART NUMBER	FUNCTION	EXHAUST	INLET	PRICE
EM-H521-06	5/2	1/8"	1/8"	£34.20
EM-H522-08	5/2	1/8"	1/4"	£29.54
EM-H523-10	5/2	1/4"	3/8"	£33.72
EM-H524-15	5/2	1/2"	1/2"	£57.44



**5/3 LEVER / LEVER / LEVER
DETENTED – CENTRES CLOSED**

3630

PART NUMBER	FUNCTION	EXHAUST	INLET	PRICE
EM-H531C-06	5/3	1/8"	1/8"	£53.12
EM-H532C-08	5/3	1/8"	1/4"	£53.12
EM-H533C-10	5/3	1/4"	3/8"	£60.79
EM-H534C-15	5/3	1/2"	1/2"	£72.92

H SERIES – MECHANICAL

SPECIFICATIONS

Working medium	Clean air
Working pressure	0 – 8 bar
Guaranteed pressure	12 bar
Working temperature	-5°C to +60°C
Valve type	5/3
Seal material	NBR
Acting type	External control



3630

5/3 LEVER / LEVER / LEVER MANUAL – CENTRES EXHAUST

PART NUMBER	FUNCTION	EXHAUST	INLET	PRICE
EM-H531E-06	5/3	1/8"	1/8"	£53.12
EM-H532E-08	5/3	1/8"	1/4"	£53.12
EM-H533E-10	5/3	1/4"	3/8"	£60.79
EM-H534E-15	5/3	1/2"	1/2"	£72.92



3630

5/3 LEVER / LEVER / LEVER MANUAL – PRESSURED CENTRES

PART NUMBER	FUNCTION	EXHAUST	INLET	PRICE
EM-H531P-06	5/3	1/8"	1/8"	£53.12
EM-H532P-08	5/3	1/8"	1/4"	£53.12
EM-H533P-10	5/3	1/4"	3/8"	£60.79
EM-H534P-15	5/3	1/2"	1/2"	£72.92



3630

4/3 ROTARY LEVER VALVE

PART NUMBER	FUNCTION	PORT SIZE	PRICE
EM-R432-08	4/3	1/4" BSPP	£33.04
EM-R432-10	4/3	3/8" BSPP	£33.04
EM-R432-15	4/3	1/2" BSPP	£33.04

SPECIFICATIONS

Control type	Manual
Working pressure	0 – 8 bar
Working temperature	-5°C to +60°C



3630

FOOT VALVE

PART NUMBER	FUNCTION	DESCRIPTION	PORT SIZE	PRICE
EM-F322-08	3/2	Foot valve no cover	1/4"	£39.60
EM-F422-08	4/2	Foot valve no cover	1/4"	£42.44
EM-F522C-08L	5/2	Foot pedal with lock and cover	1/4"	£74.83

L SERIES – MANUAL

SPECIFICATIONS

Working medium	Clean air
Working pressure	0 – 8 bar
Guaranteed pressure	12 bar
Working temperature	-5°C to +60°C
Valve type	3/2 and 5/2
Acting type	Manual



3630

3/2 & 5/2 BUTTON VALVE DETENTED

PART NUMBER	FUNCTION	PORT SIZE	PRICE
EM-L321-06	3/2	1/8"	£29.54
EM-L322-08	3/2	1/4"	£28.17
EM-L323-10	3/2	3/8"	£36.60
EM-L324-15	3/2	1/2"	£46.33
EM-L521-06	5/2	1/8"	£30.91
EM-L522-08	5/2	1/4"	£30.91
EM-L523-10	5/2	3/8"	£37.56
EM-L524-15	5/2	1/2"	£51.34

SPECIFICATIONS

Working medium	Clean air
Working pressure	0-8 bar
Guaranteed pressure	12 bar
Working temperature	-5°C to +60°C
Valve type	3/2 and 5/2
Acting type	External control



3630

3/2 & 5/2 HAND PULL VALVE BUTTON SPRING

PART NUMBER	FUNCTION	PORT SIZE	PRICE
EM-L321-06S	3/2	1/8"	£38.38
EM-L322-08S	3/2	1/4"	£36.60
EM-L323-10S	3/2	3/8"	£47.57
EM-L324-15S	3/2	1/2"	£60.25
EM-L521-06S	5/2	1/8"	£40.16
EM-L522-08S	5/2	1/4"	£40.16
EM-L523-10S	5/2	3/8"	£48.80
EM-L524-15S	5/2	1/2"	£66.76

MANUAL AND MECHANICAL VALVE WITH MANUAL OPERATING HEADS

SPECIFICATION

Working pressure	0 – 8 bar
Guaranteed pressure	12 bar
Working temperature	-5°C to +60°C
Valve type	MV series: 3/2 M series: 5/2
Acting type	External control
Panel cut out size	Ø 22.5 mm

Alternative button colours available upon request

Lead times to be advised



3630

PUSH BUTTON SPRING RETURN VALVE FLAT BUTTON

PART NUMBER	FUNCTION	PORT SIZE	PRICE
EM-MV32-06S5R	3/2	1/8"	£18.99
EM-M32-08S5R	3/2	1/4"	£26.39
EM-M52-08S5R	5/2	1/4"	£29.53



3630

3/2 ROLLER LEVER VALVE

PART NUMBER	FUNCTION	PORT SIZE	PRICE
EM-MV32-06S2	3/2	1/8"	£18.99
EM-MJ32-08S2	3/2	1/4"	£26.39
EM-M52-08S2	5/2	1/4"	£29.53

PUSH BUTTON SPRING RETURN VALVE RAISED BUTTON



3630

PART NUMBER	FUNCTION	PORT SIZE	PRICE
EM-MV32-06S4G	3/2	1/8"	£18.99
EM-M32-08S4G	3/2	1/4"	£26.39
EM-M52-08S4G	5/2	1/4"	£29.53

TWO POSITION SELECTOR SWITCH VALVE WITH INDICATING ARROW



3630

PART NUMBER	FUNCTION	PORT SIZE	PRICE
EM-MV32-06S1B	3/2	1/8"	£18.99
EM-M32-08S1B	3/2	1/4"	£7.70
EM-M52-08S1B	5/2	1/4"	£29.53

PALM BUTTON SPRING RETURN VALVE



3630

PART NUMBER	FUNCTION	PORT SIZE	PRICE
EM-MV32-06S6R	3/2	1/8"	£18.99
EM-M32-08S6R	3/2	1/4"	£26.39
EM-M52-08S6R	5/2	1/4"	£29.53



3630

BASIC (NO BUTTON) VALVES SPRING RETURN

PART NUMBER	FUNCTION	PORT SIZE	PRICE
EM-MV322-06S7	3/2	1/8"	£16.86
EM-M32-08S7	3/2	1/4"	£26.39
EM-M52-08S7	5/2	1/4"	£29.54

TWIST LOCK PALM SWITCH VALVE



3630

PART NUMBER	FUNCTION	PORT SIZE	PRICE
EM-MV32-06S3R	3/2	1/8"	£18.99
EM-M32-08S3R	3/2	1/4"	£26.39
EM-M52-08S3R	5/2	1/4"	£29.53

MANUAL AND MECHANICAL VALVE WITH MANUAL OPERATING HEADS



PUSH BUTTON SHROUDED
S5 VALVE HEAD

PART NUMBER	TO SUIT	PRICE
EM-M32-06S5R-P01	M32, M52 & MV34 valves	£8.84



PALM TWIST UNLOCK
S3 VALVE HEAD

PART NUMBER	TO SUIT	PRICE
EM-M32-06S3R-P01	M32, M52 & MV32 valves	£8.84



PUSH BUTTON RAISED
S4 VALVE HEAD

PART NUMBER	TO SUIT	PRICE
EM-M32-06S4G-P01	M32, M52 & MV33 valves	£8.84



TWO POSITION SELECTOR
S1 BLACK VALVE HEAD

PART NUMBER	TO SUIT	PRICE
EM-M32-06S1B-P01	M32, M52 & MV32 valves	£7.81



PALM SPRING RETURN
S6 VALVE HEAD

PART NUMBER	TO SUIT	PRICE
EM-M32-06S6R-P01	M32, M52 & MV35 valves	£8.84

You may also need ...

Breathing air couplings



... on pages 23 – 27, section 1

You may also need ...

CDC polyurethane tubing



... on pages 616 – 618, section 11