

# E.MC PNEUMATIC PRODUCTS



330

E.MC  
EI & E Series Filter, Regulator  
and Lubricator Assemblies



334

E.MC  
E Series Shut-Off Valves,  
Auto-Drains & Accessories



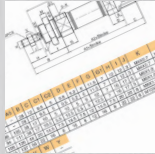
335

E.MC  
ISO 6432 Standard Mini Cylinders



336

E.MC  
ISO 6432 Standard Mini Cylinder  
Accessories



337

E.MC  
IA and IAC Series Cylinder  
Dimensional Drawings



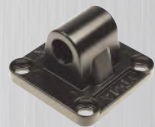
338

E.MC  
FVBC Series Standard Cylinders



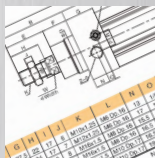
339

E.MC  
VBC Series Standard Cylinders



340

E.MC  
Cylinder Accessories



342

E.MC  
FVBC and VBC Series Cylinder  
Dimensional Drawings



343

E.MC  
SQ Series Compact Cylinders

# E.MC PNEUMATIC PRODUCTS



**344**

E.MC  
SF Series Compact Cylinders



**345**

E.MC  
EXS and SGM Series  
Guided Cylinders



**346**

E.MC  
Silencers



**348**

E.MC  
Pneumatically Operated Valves



**349**

E.MC  
Solenoid Valves



**350**

E.MC  
Solenoid Valve Accessories



**351**

E.MC  
Manual and Pneumatically  
Operated Valves



**352**

E.MC  
Manual Valves



**353**

E.MC  
Manual and Mechanical Valves

**EI SERIES**
**SPECIFICATIONS**

Max. working pressure	10 bar
Working temperature	+5°C to +60°C
Filter precision	5 micron
Bowl material	Polycarbonate – metal bowl guard fitted on sizes 3000 and above
Max. Inlet pressure	15 bar
Adjustable pressure range	0.5 to 8.5 bar
Drain type	Manual drain / auto drain
Type	Non relieving

**PANEL CUT OUT HOLE**

BODY SIZE	Ø	MAX. PLATE THICKNESS
2000	33.5 mm	3.5 mm
3000	42.5 mm	3.5 mm
4000	52.5 mm	5.0 mm
5000	52.5 mm	5.0 mm

**EIW and EIC series products come complete with gauge and bracket.**  
Flow rates are based on an 8 bar supply pressure and 6.3 bar set pressure.

**EIR REGULATORS**


3650

**EIR SERIES**
**INTEGRAL GAUGE AND BRACKET**

PART NUMBER	BODY SIZE	PORT SIZE	FLOW RATE (L/MIN)	PRICE
EM-EIR2000-01-2	2000	1/8"	1178	£20.32
EM-EIR2000-02-2	2000	1/4"	1200	£20.32
EM-EIR3000-02-2	3000	1/4"	2112	£31.48
EM-EIR3000-03-2	3000	3/8"	2212	£31.48
EM-EIR4000-04-2	4000	1/2"	5312	£41.96
EM-EIR5000-06-2	5000	3/4"	6400	£52.40
EM-EIR5000-10-2	5000	1"	6600	£52.40

**EIW FILTER / REGULATORS**


3650

**EIW SERIES FILTER / REGULATOR**
**MANUAL DRAIN**

PART NUMBER	BODY SIZE	PORT SIZE	FLOW RATE (L/MIN)	PRICE
EM-EIW2000-01-2-5M	2000	1/8"	1078	£29.16
EM-EIW2000-02-2-5M	2000	1/4"	1165	£29.16

**AUTO DRAIN**

EM-EIW2000-01D-2-5M	2000	1/8"	1078	£45.56
EM-EIW2000-02D-2-5M	2000	1/4"	1165	£45.56

**EIW SERIES FILTER / REGULATOR**
**WITH METAL BOWL GUARD**
**MANUAL DRAIN**


3650

PART NUMBER	BODY SIZE	PORT SIZE	FLOW RATE (L/MIN)	PRICE
EM-EIW3000-02-2-5M	3000	1/4"	1998	£39.36
EM-EIW3000-03-2-5M	3000	3/8"	2177	£39.36
EM-EIW4000-04-2-5M	4000	1/2"	5211	£59.00
EM-EIW5000-06-2-5M	5000	3/4"	6200	£81.92
EM-EIW5000-10-2-5M	5000	1"	6400	£81.92

**AUTO DRAIN**

EM-EIW3000-02D-2-5M	3000	1/4"	1998	£72.08
EM-EIW3000-03D-2-5M	3000	3/8"	2177	£72.08
EM-EIW4000-03D-2-5M	4000	3/8"	5108	£91.76
EM-EIW4000-04D-2-5M	4000	1/2"	5211	£91.76
EM-EIW5000-06D-2-5M	5000	3/4"	6200	£114.72
EM-EIW5000-10D-2-5M	5000	1"	6400	£114.72

**EIC FILTER / REGULATOR / LUBRICATORS**


3650

**EIC SERIES FILTER / REGULATOR**
**MANUAL DRAIN**

PART NUMBER	BODY SIZE	PORT SIZE	FLOW RATE (L/MIN)	PRICE
EM-EIC2010-01-2-5M	2000	1/8"	945	£44.28
EM-EIC2010-02-2-5M	2000	1/4"	960	£44.28

**AUTO DRAIN**

EM-EIC2010-01D-2-5M	2000	1/8"	945	£60.64
EM-EIC2010-02D-2-5M	2000	1/4"	960	£60.64

**EIC SERIES FILTER / REGULATOR**
**WITH METAL BOWL GUARD**
**MANUAL DRAIN**


3650

PART NUMBER	BODY SIZE	PORT SIZE	FLOW RATE (L/MIN)	PRICE
EM-EIC3010-02-2-5M	3000	1/4"	1874	£61.92
EM-EIC3010-03-2-5M	3000	3/8"	1956	£61.92
EM-EIC4010-04-2-5M	4000	1/2"	5120	£89.48
EM-EIC5010-06-2-5M	5000	3/4"	6000	£127.84
EM-EIC5010-10-2-5M	5000	1"	6200	£127.84

**AUTO DRAIN**

EM-EIC3010-02D-2-5M	3000	1/4"	1874	£88.36
EM-EIC3010-03D-2-5M	3000	3/8"	1956	£94.68
EM-EIC4010-04D-2-5M	4000	1/2"	5120	£122.24
EM-EIC5010-06D-2-5M	5000	3/4"	6000	£160.60
EM-EIC5010-10D-2-5M	5000	1"	6200	£160.60

**E SERIES**
**EIC FILTER / REGULATOR / LUBRICATORS WITH INTEGRAL GAUGE**
**SPECIFICATIONS**

Max. working pressure	10 bar
Working temperature	+5°C to +60°C
Filter precision	5 micron
Bowl material	Polycarbonate – metal bowl guard fitted on sizes 3000 and above
Inlet pressure	15 bar
Adjustable pressure range	0.5 to 8.5 bar
Drain type	Auto drain

**PANEL CUT OUT HOLE**

BODY SIZE	Ø	MAX. PLATE THICKNESS
2000	33.5 mm	3.5 mm
3000	42.5 mm	3.5 mm
4000	52.5 mm	5.0 mm

EIC series products come complete with integral gauge ready to mount. Flow rates are based on an 8 bar supply pressure and 6.3 bar set pressure.

**New**
**EIC SERIES FILTER / REGULATOR / LUBRICATOR WITH INTEGRAL GAUGE**
**AUTO DRAIN**


3650

PART NUMBER	BODY SIZE	PORT SIZE	FLOW RATE (L/MIN)	PRICE
EM-EIC2000-02D	2000	1/4"	2006	£65.20

**New**
**EIC SERIES FILTER / REGULATOR / LUBRICATOR WITH INTEGRAL GAUGE AND METAL BOWL GUARD AUTO DRAIN**


3650

PART NUMBER	BODY SIZE	PORT SIZE	FLOW RATE (L/MIN)	PRICE
EM-EIC3000-03D	3000	3/8"	2148	£107.84
EM-EIC4000-04D	4000	1/2"	5430	£134.08

**SPECIFICATIONS**

Max. working pressure	10 bar
Working temperature	+5°C to +60°C
Filter precision	5 micron
Bowl material	Polycarbonate – metal bowl guard fitted on sizes 3000 and above
Inlet pressure	15 bar
Adjustable pressure range	0.5 to 8.5 bar
Drain type	Manual drain / auto drain
Type	Non relieving

**PANEL CUT OUT HOLE**

BODY SIZE	Ø	MAX. PLATE THICKNESS
2000	33.5 mm	3.5 mm
3000	42.5 mm	3.5 mm
4000	52.5 mm	5.0 mm
5000	52.5 mm	5.0 mm

EW and EC series products come complete with gauge and bracket. Flow rates are based on an 8 bar supply pressure and 6.3 bar set pressure.

**ER REGULATORS**
**ER SERIES REGULATOR**
**INCLUDES GAUGE AND BRACKET**


3650

PART NUMBER	BODY SIZE	PORT SIZE	FLOW RATE (L/MIN)	PRICE
EM-ER2000-01-5	2000	1/8"	1178	£20.28
EM-ER2000-02-5	2000	1/4"	1200	£20.28
EM-ER3000-02-5	3000	1/4"	2112	£31.48
EM-ER3000-03-5	3000	3/8"	2212	£31.48
EM-ER4000-03-5	4000	3/8"	5020	£41.96
EM-ER4000-04-5	4000	1/2"	5312	£41.96
EM-ER5000-06-5	5000	3/4"	6400	£52.44
EM-ER5000-10-5	5000	1"	6600	£52.44

**EW FILTER / REGULATORS**
**EW SERIES FILTER / REGULATOR**
**MANUAL DRAIN**


3650

PART NUMBER	BODY SIZE	PORT SIZE	FLOW RATE (L/MIN)	PRICE
EM-EW2000-01-5	2000	1/8"	1078	£29.20
EM-EW2000-02-5	2000	1/4"	1165	£29.20

**AUTO DRAIN**

EM-EW2000-01D-5	2000	1/8"	1300	£45.56
EM-EW2000-02D-5	2000	1/4"	1345	£45.56

**EC FILTER / REGULATOR / LUBRICATORS**
**EC SERIES FILTER / REGULATOR / LUBRICATOR**
**MANUAL DRAIN**


3650

PART NUMBER	BODY SIZE	PORT SIZE	FLOW RATE (L/MIN)	PRICE
EM-EC2010-01-5	2000	1/8"	945	£44.28
EM-EC2010-02-5	2000	1/4"	960	£44.28

**AUTO DRAIN**

EM-EC2010-01D-5	2000	1/8"	945	£60.64
EM-EC2010-02D-5	2000	1/4"	960	£60.64

**E SERIES**
**EC FILTER / REGULATOR / LUBRICATORS**
**SPECIFICATIONS**

Max. working pressure	10 bar
Working temperature	+5°C to +60°C
Filter precision	25 micron
Bowl material	Polycarbonate – metal bowl guard fitted on sizes 3000 and above
Inlet pressure	15 bar
Adjustable pressure range	0.5 to 8.5 bar
Drain type	Manual drain / auto drain

**PANEL CUT OUT HOLE**

BODY SIZE	Ø	MAX. PLATE THICKNESS
2000	33.5 mm	3.5 mm
3000	42.5 mm	3.5 mm
4000	52.5 mm	5.0 mm
5000	52.5 mm	5.0 mm

**Six**


3650

**EW SERIES FILTER / REGULATOR WITH METAL BOWL GUARD MANUAL DRAIN**

PART NUMBER	BODY SIZE	PORT SIZE	FLOW RATE (L/MIN)	PRICE
EM-EW3000-02-5	3000	1/4"	1998	£39.32
EM-EW3000-03-5	3000	3/8"	2177	£39.32
EM-EW4000-03-5	4000	3/8"	5108	£58.96
EM-EW4000-04-5	4000	1/2"	5211	£58.96
EM-EW5000-06-5	5000	3/4"	6200	£81.92
EM-EW5000-10-5	5000	1"	6400	£81.92

**AUTO DRAIN**

PART NUMBER	BODY SIZE	PORT SIZE	FLOW RATE (L/MIN)	PRICE
EM-EW3000-02D-5	3000	1/4"	2310	£72.08
EM-EW3000-03D-5	3000	3/8"	2375	£72.08
EM-EW4000-03D-5	4000	3/8"	5321	£91.76
EM-EW4000-04D-5	4000	1/2"	5532	£91.76
EM-EW5000-06D-5	5000	3/4"	7700	£114.72
EM-EW5000-10D-5	5000	1"	8000	£114.72

**EC SERIES FILTER / REGULATOR / LUBRICATOR WITH METAL BOWL GUARD MANUAL DRAIN**


3650

PART NUMBER	BODY SIZE	PORT SIZE	FLOW RATE (L/MIN)	PRICE
EM-EC3010-02-5	3000	1/4"	1874	£61.92
EM-EC3010-03-5	3000	3/8"	1956	£61.92
EM-EC4010-03-5	4000	3/8"	4923	£89.48
EM-EC4010-04-5	4000	1/2"	5120	£89.48
EM-EC5010-06-5	5000	3/4"	6000	£127.84
EM-EC5010-10-5	5000	1"	6200	£127.84

**AUTO DRAIN**

PART NUMBER	BODY SIZE	PORT SIZE	FLOW RATE (L/MIN)	PRICE
EM-EC3010-02D-5	3000	1/4"	1874	£94.68
EM-EC3010-03D-5	3000	3/8"	1956	£94.68
EM-EC4010-03D-5	4000	3/8"	4923	£122.24
EM-EC4010-04D-5	4000	1/2"	5120	£122.24
EM-EC5010-06D-5	5000	3/4"	6000	£160.60
EM-EC5010-10D-5	5000	1"	6200	£160.60



3650

**EC SERIES FILTER / REGULATOR / LUBRICATOR MANUAL DRAIN**

PART NUMBER	BODY SIZE	PORT SIZE	FLOW RATE (L/MIN)	PRICE
EM-EC2000-01-5	2000	1/8"	1000	£48.88
EM-EC2000-02-5	2000	1/4"	1100	£48.88

**AUTO DRAIN**

PART NUMBER	BODY SIZE	PORT SIZE	FLOW RATE (L/MIN)	PRICE
EM-EC2000-01D-5	2000	1/8"	1000	£65.20
EM-EC2000-02D-5	2000	1/4"	1100	£65.20

**EC SERIES FILTER / REGULATOR / LUBRICATOR WITH METAL BOWL GUARD MANUAL DRAIN**


3650

PART NUMBER	BODY SIZE	PORT SIZE	FLOW RATE (L/MIN)	PRICE
EM-EC3000-02-5	3000	1/4"	1950	£75.08
EM-EC3000-03-5	3000	3/8"	2105	£75.08
EM-EC4000-03-5	4000	3/8"	4950	£101.24
EM-EC4000-04-5	4000	1/2"	5200	£101.24
EM-EC5000-06-5	5000	3/4"	6200	£139.60
EM-EC5000-10-5	5000	1"	6500	£139.60

**AUTO DRAIN**

PART NUMBER	BODY SIZE	PORT SIZE	FLOW RATE (L/MIN)	PRICE
EM-EC3000-02D-5	3000	1/4"	1950	£107.84
EM-EC3000-03D-5	3000	3/8"	2105	£107.84
EM-EC4000-03D-5	4000	3/8"	4950	£134.08
EM-EC4000-04D-5	4000	1/2"	5200	£134.08
EM-EC5000-06D-5	5000	3/4"	6200	£172.36
EM-EC5000-10D-5	5000	1"	6500	£172.36

EC series products come complete with gauge and bracket. Flow rates are based on an 8 bar supply pressure and 6.3 bar set pressure.

**E SERIES**
**EF FILTERS**


3650

**EF SERIES FILTER  
MANUAL DRAIN**

PART NUMBER	BODY SIZE	PORT SIZE	FLOW RATE (L/MIN)	PRICE
EM-EF2000-01J	2000	1/8"	1222	£12.16
EM-EF2000-02J	2000	1/4"	1278	£12.16

**AUTO DRAIN**

EM-EF2000-01DJ	2000	1/8"	1222	£28.52
EM-EF2000-02DJ	2000	1/4"	1278	£28.52

EF series products do not include a bracket. Flow rates are based on an 8 bar supply pressure and 6.3 bar set pressure.



3650

**EF SERIES FILTER  
WITH METAL BOWL GUARD  
MANUAL DRAIN**

PART NUMBER	BODY SIZE	PORT SIZE	FLOW RATE (L/MIN)	PRICE
EM-EF3000-02J	3000	1/4"	2006	£18.36
EM-EF3000-03J	3000	3/8"	2148	£18.36
EM-EF4000-03J	4000	3/8"	5120	£25.60
EM-EF4000-04J	4000	1/2"	5430	£25.60
EM-EF5000-06J	5000	3/4"	8200	£38.08
EM-EF5000-10J	5000	1"	8500	£38.08

**AUTO DRAIN**

EM-EF3000-02DJ	3000	1/4"	2006	£51.12
EM-EF3000-03DJ	3000	3/8"	2148	£51.12
EM-EF4000-03DJ	4000	3/8"	5120	£58.36
EM-EF4000-04DJ	4000	1/2"	5430	£58.36
EM-EF5000-06DJ	5000	3/4"	8200	£70.80
EM-EF5000-10DJ	5000	1"	8500	£70.80

**EL LUBRICATORS**


3650

**EL SERIES LUBRICATOR  
MANUAL DRAIN**

PART NUMBER	BODY SIZE	PORT SIZE	FLOW RATE (L/MIN)	PRICE
EM-EL2000-01J	2000	1/8"	1300	£12.16
EM-EL2000-02J	2000	1/4"	1345	£12.16

EL series products do not include a bracket. Flow rates are based on an 8 bar supply pressure and 6.3 bar set pressure.



3650

**EL SERIES LUBRICATOR  
WITH METAL BOWL GUARD  
MANUAL DRAIN**

PART NUMBER	BODY SIZE	PORT SIZE	FLOW RATE (L/MIN)	PRICE
EM-EL3000-02J	3000	1/4"	2310	£18.36
EM-EL3000-03J	3000	3/8"	2375	£18.36
EM-EL4000-03J	4000	3/8"	5321	£25.60
EM-EL4000-04J	4000	1/2"	5532	£25.60
EM-EL5000-06J	5000	3/4"	7700	£40.28
EM-EL5000-10J	5000	1"	8000	£40.28

New Additions

**LUBRICATING OIL  
GRADE 22 HM TYPE**


9110

PART NUMBER	DESCRIPTION	PRICE
H01LL	1 litre	£7.40
H05LL	5 litre	£25.60
H20LL	20 litre	£90.40

For Air Tools, see pages 995-998.



**E SERIES**
**SHUT-OFF VALVES**


3650

**3/2 SHUT-OFF VALVE  
LOCKABLE**

PART NUMBER	BODY SIZE	PORT	PRICE
EM-EVSH2000-01	2000	1/8"	£23.40
EM-EVSH2000-02	2000	1/4"	£23.40
EM-EVSH3000-02	3000	1/4"	£35.08
EM-EVSH3000-03	3000	3/8"	£35.04
EM-EVSH4000-03	4000	3/8"	£49.08
EM-EVSH4000-04	4000	1/2"	£49.08

Installation:  
Install drainer  
vertically with  
drain port facing  
down.

**AUTO DRAINS**
**FEATURES**

- Drip Leg / Auto Drain
- Fully automatic operation
- Auto drain discharges the condensate each time the maximum permissible level in the bowl is reached
- When total pressure is removed from the system, the drain will also open
- Collected liquids can be piped away

**SPECIFICATIONS**

Working medium	Compressed air
Working temperature	+5°C to +60°C
Working pressure	1.5 to 10 bar
Guaranteed pressure resistance	15 bar



3650

**DRIP LEG AUTO DRAIN  
150 ML BOWL CAPACITY**

PART NUMBER	PORT	OUTSIDE DIAMETER	LENGTH	PRICE
EM-HED402-02	1/4"	72 mm	162 mm	£59.00
EM-HED402-03	3/8"	72 mm	162 mm	£59.00
EM-HED402-04	1/2"	72 mm	162 mm	£59.00

**E SERIES ACCESSORIES**


3650

**PRESSURE GAUGE**

PART NUMBER	SERIES	DIA.	THREAD	PRICE
EM-EYZ4001051B-06	2000 / 3000	40 mm	1/8"	£3.84
EM-EYZ5001051B-08	4000 / 5000	50 mm	1/4"	£4.20

**TYPE 20 MOUNTING BRACKET  
SUITABLE FOR ER / EW / EIR  
& EIW SERIES**


3650

PART NUMBER	FOR USE WITH	PRICE
EM-B220	ER/EW 2000	£2.68
EM-B320	ER/EW 3000	£3.56
EM-B420	ER/EW 4000/5000	£4.48

**T-TYPE MOUNTING BRACKET  
SUITABLE FOR EC SERIES**


3650

PART NUMBER	FOR USE WITH	PRICE
EM-Y20T	EC2000	£6.24
EM-Y30T	EC3000	£9.80
EM-Y40T	EC4000	£11.60
EM-Y60T	EC5000	£14.28

**FILTER ELEMENT**


3650

PART NUMBER	FILTER PRECISION	FOR USE WITH	PRICE
EM-EF2000-005-2	5 Micron	EI2000 / E2000	£1.44
EM-EF2000-005-1	25 Micron	EI2000 / E2000	£1.44
EM-EF3000-005-2	5 Micron	EI3000 / E3000	£1.96
EM-EF3000-005-1	25 Micron	EI3000 / E3000	£1.96
EM-EF4000-005-2	5 Micron	EI4000 / E4000	£4.28
EM-EF4000-005-1	25 Micron	EI4000 / E4000	£4.28
EM-EF5000-005-2	5 Micron	EI5000 / E5000	£6.68
EM-EF5000-005-1	25 Micron	EI5000 / E5000	£6.68

**INTERNAL PRESSURE GAUGE  
SUITABLE FOR EI SERIES**


3650

PART NUMBER	FOR USE WITH	PRICE
EM-FB-0102	EI Series	£5.64

**TYPE 40 MOUNTING BRACKET  
SUITABLE FOR EF & EL SERIES**


3650

PART NUMBER	FOR USE WITH	PRICE
EM-B240	EF/EL 2000	£2.68
EM-B340	EF/EL 3000	£3.56
EM-B440	EF/EL 4000	£4.48
EM-B640	EF/EL 5000	£7.16

**AIR TAKE OFF SPACER**


3650

PART NUMBER	FOR USE WITH	PORT SIZE	PRICE
EM-Y21-01*	EIC/EC2000/10	1/8"	£8.93
EM-Y21-02*	EIC/EC2000/10	1/4"	£8.93
EM-Y31-01	EIC/EC3000/10	1/8"	£13.39
EM-Y31-02	EIC/EC3000/10	1/4"	£13.39
EM-Y41-02	EIC/EC4000/10	1/4"	£16.06
EM-Y41-03	EIC/EC4000/10	3/8"	£16.06
EM-Y61-03	EIC/EC5000/10	3/8"	£22.30
EM-Y61-04	EIC/EC5000/10	1/2"	£22.30

\* EM-Y21-01 and EM-Y21-02 can only be used with three unit combinations i.e. Filter + regulator + lubricator



3650

**AUTO DRAIN KIT**

PART NUMBER	FOR USE WITH	PRICE
EM-ZDFS-08	3000	£32.33
EM-ZDFS-10	4000 / 5000	£32.33

**IA, IAC & IASB SERIES**
**FEATURES / BENEFITS**

- Front/rear covers machined by high precision CNC machine, giving high consistency and concentricity
- Japanese anti-dust seal, providing better sealing performance and dust protection
- German grease provides a longer cylinder life
- Riveted cylinder barrel structure and front / rear cover gives higher efficiency, performance and improved compression resistance
- Cap positioning machine guarantees front and rear caps locate at same horizontal position, making them easier to install

**SPECIFICATIONS**

Cylinder type	Single or double acting Magnetic positioning
Materials	Aluminium end blocks. S45C hard chrome carbon steel piston rod. Stainless steel barrel. NBR seals.
Max. operating pressure	10 bar
Operating temperature	-20°C to +80°C (dry air)
Speed range	Double acting: 30 to 800 mm/s Single acting: 50 to 800 mm/s
Bore	ø10 mm, ø12 mm, ø16 mm, ø20 mm, ø25 mm
Mounting	Foot, front / rear flange and rear clevis
Available stroke length	0-500 mm
Cushion type	Rubber or adjustable air cushion

**IA SERIES DOUBLE ACTING  
RUBBER CUSHIONED**
**10 BORE**


3610

PART NUMBER	BORE	STROKE	PRICE
EM-IA10X25-S	10 mm	25 mm	£19.68
EM-IA10X50-S	10 mm	50 mm	£20.96
EM-IA10X80-S	10 mm	80 mm	£23.56
EM-IA10X100-S	10 mm	100 mm	£23.56

**12 BORE**

EM-IA12X25-S	12 mm	25 mm	£27.64
EM-IA12X50-S	12 mm	50 mm	£29.24
EM-IA12X80-S	12 mm	80 mm	£34.12
EM-IA12X100-S	12 mm	100 mm	£34.12

**16 BORE**

EM-IA16X25-S	16 mm	25 mm	£25.80
EM-IA16X50-S	16 mm	50 mm	£27.40
EM-IA16X80-S	16 mm	80 mm	£30.60
EM-IA16X100-S	16 mm	100 mm	£30.60
EM-IA16X125-S	16 mm	125 mm	£32.20
EM-IA16X150-S	16 mm	150 mm	£33.84

**20 BORE**

EM-IA20X25-S	20 mm	25 mm	£27.04
EM-IA20X50-S	20 mm	50 mm	£29.12
EM-IA20X80-S	20 mm	80 mm	£33.24
EM-IA20X100-S	20 mm	100 mm	£33.24
EM-IA20X125-S	20 mm	125 mm	£35.32
EM-IA20X150-S	20 mm	150 mm	£37.36

**25 BORE**

EM-IA25X25-S	25 mm	25 mm	£29.08
EM-IA25X50-S	25 mm	50 mm	£31.32
EM-IA25X80-S	25 mm	80 mm	£35.80
EM-IA25X100-S	25 mm	100 mm	£35.80
EM-IA25X125-S	25 mm	125 mm	£38.04
EM-IA25X150-S	25 mm	150 mm	£40.28

For cylinder dimensional drawings, please see page 337.

**IAC SERIES DOUBLE ACTING  
AIR CUSHIONED**
**16 BORE**


3610

PART NUMBER	BORE	STROKE	PRICE
EM-IAC16X25-S	16 mm	25 mm	£33.52
EM-IAC16X50-S	16 mm	50 mm	£35.64
EM-IAC16X80-S	16 mm	80 mm	£39.76
EM-IAC16X100-S	16 mm	100 mm	£39.80
EM-IAC16X125-S	16 mm	125 mm	£41.84
EM-IAC16X150-S	16 mm	150 mm	£43.96

**20 BORE**

EM-IAC20X25-S	20 mm	25 mm	£35.16
EM-IAC20X50-S	20 mm	50 mm	£37.84
EM-IAC20X80-S	20 mm	80 mm	£43.20
EM-IAC20X100-S	20 mm	100 mm	£43.20
EM-IAC20X125-S	20 mm	125 mm	£45.92
EM-IAC20X150-S	20 mm	150 mm	£48.56

**25 BORE**

EM-IAC25X25-S	25 mm	25 mm	£39.48
EM-IAC25X50-S	25 mm	50 mm	£41.12
EM-IAC25X80-S	25 mm	80 mm	£46.56
EM-IAC25X100-S	25 mm	100 mm	£46.56
EM-IAC25X125-S	25 mm	125 mm	£49.44
EM-IAC25X150-S	25 mm	150 mm	£52.36

**IASB SERIES SINGLE ACTING  
SPRING RETURN**
**12 BORE**


3610

PART NUMBER	BORE	STROKE	PRICE
EM-IASB12X25-S	12 mm	25 mm	£34.40
EM-IASB12X50-S	12 mm	50 mm	£38.00
EM-IASB12X80-S	12 mm	80 mm	£35.64
EM-IASB12X125-S	12 mm	125 mm	£37.40
EM-IASB12X150-S	12 mm	150 mm	£39.16

**16 BORE**

EM-IASB16X25-S	16 mm	25 mm	£38.56
EM-IASB16X50-S	16 mm	50 mm	£40.96
EM-IASB16X80-S	16 mm	80 mm	£45.76
EM-IASB16X125-S	16 mm	125 mm	£48.16
EM-IASB16X150-S	16 mm	150 mm	£50.56

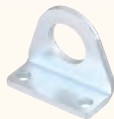
**20 BORE**

EM-IASB20X25-S	20 mm	25 mm	£40.44
EM-IASB20X50-S	20 mm	50 mm	£43.52
EM-IASB20X80-S	20 mm	80 mm	£49.68
EM-IASB20X125-S	20 mm	125 mm	£52.76
EM-IASB20X150-S	20 mm	150 mm	£55.96

**25 BORE**

EM-IASB25X10-S	25 mm	10 mm	£39.56
EM-IASB25X25-S	25 mm	25 mm	£43.44
EM-IASB25X50-S	25 mm	50 mm	£46.80
EM-IASB25X80-S	25 mm	80 mm	£53.52
EM-IASB25X125-S	25 mm	125 mm	£56.88
EM-IASB25X150-S	25 mm	150 mm	£60.16



**IASB / IAS / IA SERIES ACCESSORIES**
**Six**

**MOUNTING FOOT (2 PIECES)**

3610

PART NUMBER	CYLINDER BORE	PRICE
EM-FJ-IA12LB	12 mm / 16 mm	£3.72
EM-FJ-IA20LB	20 mm / 25 mm	£4.08


**REAR CLEVIS**

3610

PART NUMBER	CYLINDER BORE	PRICE
EM-FJ-IA12SDB	12 mm / 16 mm	£7.48
EM-FJ-IA20SDB	20 mm / 25 mm	£7.48


**FRONT FLANGE**

3610

PART NUMBER	CYLINDER BORE	PRICE
EM-FJ-IA20FA	20 mm / 25 mm	£4.99


**PISTON ROD CLEVIS AND PIN**

3610

PART NUMBER	CYLINDER BORE	THREAD	PRICE
EM-FJ-M6X1YCJ	12 mm / 16 mm	M6 x 1	£3.72
EM-FJ-M8X1.25YCJ	20 mm	M8 x 1.25	£5.00
EM-FJ-M10X1.25YCJ	25 mm	M10 x 1.25	£7.04


**SINGLE PISTON ROD CLEVIS**

3610

PART NUMBER	CYLINDER BORE	THREAD	PRICE
EM-FJ-M6X1IJ	12 mm / 16 mm	M6 x 1	£2.60
EM-FJ-M8X1.25IJ	20 mm	M8 x 1.25	£3.96
EM-FJ-M10X1.25IJ	25 mm	M10 x 1.25	£4.64


**MAGNETIC SWITCH**

3610

PART NUMBER	DESCRIPTION	PRICE
EM-HX-13D	2 wire without contact switch 10-28 V DC	£17.60
EM-HX-13N	NPN type 3 wire 5-30 V DC	£29.12
EM-HX-13P	PNP type 3 wire 5-30 V DC	£29.12
EM-HX-13R	2 wire reed switch 5-240 V AC/DC	£12.52


**FIXED STEEL BELT  
LENGTH TYPE FOR HX-13**

3610

PART NUMBER	BORE	PRICE
EM-PAB-13	6 – 63 mm	£2.34

CDC Polyurethane Airline  
Recoils with Fittings.

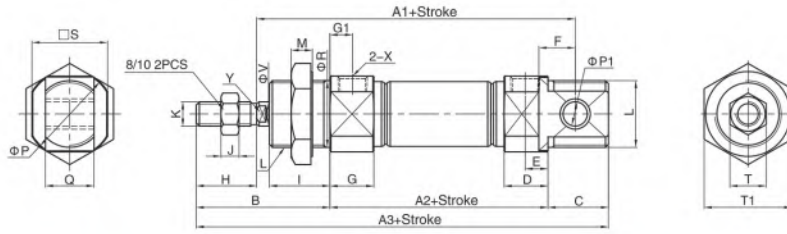
See section 11.



EMC-IA SERIES

IA  $\Phi 8-\Phi 25$

CA Type



(mm)

Bore\Sign	A1	A2	A3	A4	A5	B	C	C1	C2	D	E	F	G	G1	H	I	J	K	L	M	P	P1	Q	R	S
8	64	46	86	74	-	28	12	9.5	5	9.5	5.2	6	11.5	7	12	12	3	M4X0.7	M12X1.25	7	17	4	8	12	15
10	64	46	86	74	-	28	12	9.5	5	9.5	5.2	6	11.5	7	12	12	3	M4X0.7	M12X1.25	7	17	4	8	12	15
12	75	50	105	88	105	38	17	10	5	10	5	9	12	7	16	17	5	M6X1.0	M16X1.5	6	19.7	6	12	16	18.3
16	82	56	111	94	111	38	17	10.5	5.5	10.5	5.5	9	12.5	7	16	17	5	M6X1.0	M16X1.5	6	22	6	12	16	20
20	95	62	126	106	126	44	20	14.5	7.5	14.5	7.5	12	14.5	7.5	20	20	6	M8X1.25	M22X1.5	7	29	8	16	22	25
25	104	65	137	115	137	50	22	16	8	16	8	12	16	8	22	22	6	M10X1.25	M22X1.5	7	33.5	8	16	22	30

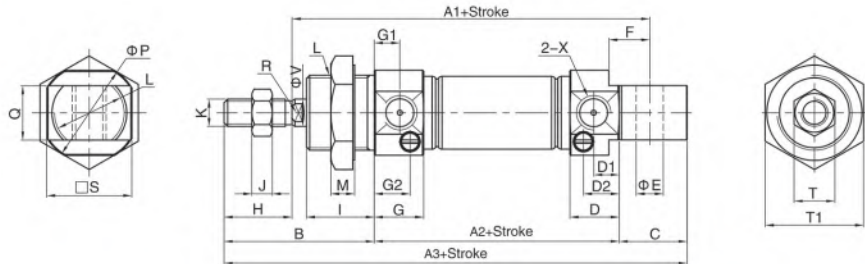
Bore\Sign	T	T1	X	V	W	Y
8	7	17	M5X0.8	4	-	-
10	7	17	M5X0.8	4	-	-
12	10	22	M5X0.8	6	15	5
16	10	22	M5X0.8	6	15	5
20	12	29	1/8"	8	18	6
25	17	29	1/8"	10	20	8

Note: With magnet and no magnet, the dimensions are same.

EMC-IAC SERIES

IAC  $\Phi 16-\Phi 25$

CA Type



(mm)

Bore\Sign	A1	A2	A3	A4	A5	B	C	D	D1	D2	D3	E	F	G	G1	G2	H	I	J	K	L	M	P	Q	R
16	82	56	111	94	111	38	17	12	6	9	12	6	9	12.5	7	9.5	16	17	5	M6X1.0	M16X1.5	6	22	12	5
20	95	62	126	106	126	44	20	14.5	7.5	11	14.5	8	12	14.5	7.5	11	20	20	6	M8X1.25	M22X1.5	7	29	16	6
25	104	65	137	115	137	50	22	16	8	12.5	16	8	12	16	8	12.5	22	22	6	M10X1.25	M22X1.5	7	33.5	16	8

Bore\Sign	S	T	T1	X	V	W
16	20	10	22	M5X0.8	6	15
20	25	12	29	1/8"	8	18
25	30	17	29	1/8"	10	20

Note: With magnet and no magnet, the dimensions are same.

**FVBC SERIES**
**DESCRIPTION**

The updated FVBC/VBC series pneumatic cylinder completely adheres to ISO15552 standard, bore sizes range from 32 mm to 100 mm. According to working regulation and force focus, the cylinder was newly designed with a complete change of covers and piston, with full PU sealing system, magnet integrated into wear ring slot, double cushion structure, strengthened cushion needle and guider. We also studied every process that will result in better quality, from material choice, die-casting technology, covers machining consistency, testing style, etc. This all made further improvement. The pneumatic cylinder is automatically machined by high precision CNC machine robots, and is automatically assembled and tested.

**FEATURES**

- Highlighted products for process optimisation
- Adheres to ISO15552 standard
- All PU sealing system
- Strong guiding design with high concentricity
- Bronze bearing with much better lateral loading
- Strengthened cushion design, soft ending
- Double cushioning system
- 2000KM loaded stroke life

**SPECIFICATIONS**

Cylinder type	Double acting, magnetic positioning
Materials	Aluminium end caps. S45C hard chrome carbon steel piston rod. Hard anodised aluminium barrel. PU seals.
Max. working pressure	10 bar
Operating temperature	-20°C to +80°C (dry air)
Speed range	50 to 800 mm/s
Bore	ø32 mm, ø40 mm, ø50 mm, ø63 mm, ø80 mm, ø100 mm
Mounting	Foot, rear trunnion, 90° rear trunnion, front flange, rear flange.
Available stroke length	0 – 1900 mm
Cushion type	Adjustable air cushion

**Six**

Non-standard stroke available on request.



3610

**FVBC SERIES CYLINDER**
**32 BORE**

PART NUMBER	BORE	STROKE	PRICE
EM-FVBC32X25-S	32 mm	25 mm	£53.60
EM-FVBC32X50-S	32 mm	50 mm	£56.44
EM-FVBC32X80-S	32 mm	80 mm	£62.12
EM-FVBC32X100-S	32 mm	100 mm	£62.12
EM-FVBC32X125-S	32 mm	125 mm	£64.96
EM-FVBC32X160-S	32 mm	160 mm	£70.64
EM-FVBC32X200-S	32 mm	200 mm	£73.48
EM-FVBC32X250-S	32 mm	250 mm	£79.16

**40 BORE**

EM-FVBC40X25-S	40 mm	25 mm	£69.76
EM-FVBC40X50-S	40 mm	50 mm	£73.36
EM-FVBC40X80-S	40 mm	80 mm	£81.00
EM-FVBC40X100-S	40 mm	100 mm	£81.00
EM-FVBC40X125-S	40 mm	125 mm	£84.96
EM-FVBC40X160-S	40 mm	160 mm	£92.60
EM-FVBC40X200-S	40 mm	200 mm	£96.12
EM-FVBC40X250-S	40 mm	250 mm	£103.76

**50 BORE**

EM-FVBC50X25-S	50 mm	25 mm	£85.72
EM-FVBC50X50-S	50 mm	50 mm	£90.48
EM-FVBC50X80-S	50 mm	80 mm	£99.72
EM-FVBC50X100-S	50 mm	100 mm	£99.68
EM-FVBC50X125-S	50 mm	125 mm	£104.08
EM-FVBC50X160-S	50 mm	160 mm	£113.24
EM-FVBC50X200-S	50 mm	200 mm	£118.08
EM-FVBC50X250-S	50 mm	250 mm	£127.26

**63 BORE**

EM-FVBC63X25-S	63 mm	25 mm	£100.36
EM-FVBC63X50-S	63 mm	50 mm	£106.40
EM-FVBC63X80-S	63 mm	80 mm	£118.00
EM-FVBC63X100-S	63 mm	100 mm	£118.00
EM-FVBC63X125-S	63 mm	125 mm	£123.64
EM-FVBC63X160-S	63 mm	160 mm	£135.24
EM-FVBC63X200-S	63 mm	200 mm	£140.84
EM-FVBC63X250-S	63 mm	250 mm	£152.36
EM-FVBC63X320-S	63 mm	320 mm	£175.20
EM-FVBC63X400-S	63 mm	400 mm	£186.84
EM-FVBC63X500-S	63 mm	500 mm	£210.00

**80 BORE**

PART NUMBER	BORE	STROKE	PRICE
EM-FVBC80X25-S	80 mm	25 mm	£135.96
EM-FVBC80X50-S	80 mm	50 mm	£143.96
EM-FVBC80X80-S	80 mm	80 mm	£159.96
EM-FVBC80X100-S	80 mm	100 mm	£159.96
EM-FVBC80X125-S	80 mm	125 mm	£167.96
EM-FVBC80X160-S	80 mm	160 mm	£184.32
EM-FVBC80X200-S	80 mm	200 mm	£192.36
EM-FVBC80X250-S	80 mm	250 mm	£208.36
EM-FVBC80X320-S	80 mm	320 mm	£240.32
EM-FVBC80X400-S	80 mm	400 mm	£256.72
EM-FVBC80X500-S	80 mm	500 mm	£288.72

**100 BORE**

EM-FVBC100X25-S	100 mm	25 mm	£166.40
EM-FVBC100X50-S	100 mm	50 mm	£176.84
EM-FVBC100X80-S	100 mm	80 mm	£197.24
EM-FVBC100X100-S	100 mm	100 mm	£197.24
EM-FVBC100X125-S	100 mm	125 mm	£207.64
EM-FVBC100X160-S	100 mm	160 mm	£228.40
EM-FVBC100X200-S	100 mm	200 mm	£238.84
EM-FVBC100X250-S	100 mm	250 mm	£259.64
EM-FVBC100X320-S	100 mm	320 mm	£300.84
EM-FVBC100X400-S	100 mm	400 mm	£321.64
EM-FVBC100X500-S	100 mm	500 mm	£362.84

For cylinder dimensional drawings, please see page 342.



VBC SERIES

DESCRIPTION

VBC series pneumatic cylinder is a pneumatic cylinder, which conforms to ISO15552 standard, bore sizes range from 32 mm to 320 mm. According to working regulation and force focus, the pneumatic cylinder was newly designed with a complete change of covers and piston, with full PU sealing system, magnet integrated into wear ring slot, double cushion structure, strengthened cushion needle and guider. We also studied every process that will result in better quality, from material choice, die-casting technology, covers machining consistency, testing style, etc. This all made further improvement. The pneumatic cylinder is automatically machined by high precision CNC machine robots, and is automatically assembled and tested. Available with VBC series mickey mouse type pneumatic cylinder and LBC series tie-rod type pneumatic cylinder.

FEATURES

- Highlighted products for process optimisation
- Adheres to ISO15552 standard
- All PU sealing system
- Strong guiding design with high concentricity
- Bronze bearing with much better lateral loading
- Strengthened cushion design, soft ending
- Double cushioning system
- 2000KM loaded stroke life



3610

SPECIFICATIONS

Cylinder type	Double acting, magnetic positioning
Materials	Aluminium end caps. S45C hard chrome carbon steel piston rod. Hard anodised aluminium barrel. PU seals.
Max. working pressure	10 bar
Operating temperature	-20°C to +80°C (dry air)
Speed range	50 – 800 mm/s
Mounting	Foot, rear trunnion, 90° rear trunnion, front flange, rear flange.
Available bore sizes	ø32 – 200 mm
Available stroke length	0 – 3000 mm
Cushion type	Adjustable air cushion

VBC SERIES STANDARD PROFILE CYLINDER

32 BORE

PART NUMBER	BORE	STROKE	PRICE
EM-VBC32X25-S	32 mm	25 mm	£46.60
EM-VBC32X50-S	32 mm	50 mm	£51.30
EM-VBC32X80-S	32 mm	80 mm	£55.04
EM-VBC32X100-S	32 mm	100 mm	£62.12
EM-VBC32X125-S	32 mm	125 mm	£58.44
EM-VBC32X160-S	32 mm	160 mm	£64.40
EM-VBC32X200-S	32 mm	200 mm	£64.40
EM-VBC32X250-S	32 mm	250 mm	£70.32
EM-VBC32X320-S	32 mm	320 mm	£78.80

40 BORE

EM-VBC40X25-S	40 mm	25 mm	£52.52
EM-VBC40X50-S	40 mm	50 mm	£58.10
EM-VBC40X80-S	40 mm	80 mm	£62.62
EM-VBC40X100-S	40 mm	100 mm	£62.62
EM-VBC40X125-S	40 mm	125 mm	£67.14
EM-VBC40X160-S	40 mm	160 mm	£72.00
EM-VBC40X200-S	40 mm	200 mm	£72.00
EM-VBC40X250-S	40 mm	250 mm	£77.96
EM-VBC40X320-S	40 mm	320 mm	£94.68

50 BORE

EM-VBC50X25-S	50 mm	25 mm	£77.54
EM-VBC50X50-S	50 mm	50 mm	£77.54
EM-VBC50X80-S	50 mm	80 mm	£83.20
EM-VBC50X100-S	50 mm	100 mm	£83.20
EM-VBC50X125-S	50 mm	125 mm	£88.83
EM-VBC50X160-S	50 mm	160 mm	£93.08
EM-VBC50X200-S	50 mm	200 mm	£93.08
EM-VBC50X250-S	50 mm	250 mm	£100.68
EM-VBC50X320-S	50 mm	320 mm	£113.92

63 BORE

EM-VBC63X25-S	63 mm	25 mm	£92.59
EM-VBC63X50-S	63 mm	50 mm	£92.59
EM-VBC63X80-S	63 mm	80 mm	£99.16
EM-VBC63X100-S	63 mm	100 mm	£99.16
EM-VBC63X125-S	63 mm	125 mm	£104.12
EM-VBC63X160-S	63 mm	160 mm	£114.28
EM-VBC63X200-S	63 mm	200 mm	£114.28
EM-VBC63X250-S	63 mm	250 mm	£124.48
EM-VBC63X320-S	63 mm	320 mm	£142.20
EM-VBC63X400-S	63 mm	400 mm	£155.00
EM-VBC63X500-S	63 mm	500 mm	£175.28

80 BORE

PART NUMBER	BORE	STROKE	PRICE
EM-VBC80X25-S	80 mm	25 mm	£119.46
EM-VBC80X50-S	80 mm	50 mm	£119.46
EM-VBC80X80-S	80 mm	80 mm	£130.18
EM-VBC80X100-S	80 mm	100 mm	£130.18
EM-VBC80X125-S	80 mm	125 mm	£140.90
EM-VBC80X160-S	80 mm	160 mm	£150.84
EM-VBC80X200-S	80 mm	200 mm	£150.84
EM-VBC80X250-S	80 mm	250 mm	£164.36
EM-VBC80X320-S	80 mm	320 mm	£188.68
EM-VBC80X400-S	80 mm	400 mm	£206.76
EM-VBC80X500-S	80 mm	500 mm	£235.56

100 BORE

EM-VBC100X25-S	100 mm	25 mm	£152.57
EM-VBC100X50-S	100 mm	50 mm	£152.57
EM-VBC100X80-S	100 mm	80 mm	£163.87
EM-VBC100X100-S	100 mm	100 mm	£163.87
EM-VBC100X125-S	100 mm	125 mm	£175.16
EM-VBC100X160-S	100 mm	160 mm	£188.12
EM-VBC100X200-S	100 mm	200 mm	£188.12
EM-VBC100X250-S	100 mm	250 mm	£203.40
EM-VBC100X320-S	100 mm	320 mm	£229.44
EM-VBC100X400-S	100 mm	400 mm	£249.12
EM-VBC100X500-S	100 mm	500 mm	£279.64

125 BORE

EM-VBC125X50-S	125 mm	50 mm	£258.59
EM-VBC125X80-S	125 mm	80 mm	£276.96
EM-VBC125X100-S	125 mm	100 mm	£276.96
EM-VBC125X125-S	125 mm	125 mm	£289.00
EM-VBC125X160-S	125 mm	160 mm	£308.40
EM-VBC125X200-S	125 mm	200 mm	£308.40
EM-VBC125X250-S	125 mm	250 mm	£327.80
EM-VBC125X320-S	125 mm	320 mm	£365.56
EM-VBC125X400-S	125 mm	400 mm	£383.88
EM-VBC125X500-S	125 mm	500 mm	£424.88

Available upon request:  
160 / 200 bore  
Additional strokes available on all bore sizes.

For cylinder dimensional drawings, please see page 342.



**FEMALE REAR TRUNNION AND PIN**

3610

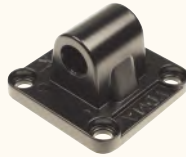


**PISTON ROD CLEVIS AND PIN**

3610

PART NUMBER	CYLINDER BORE	PRICE
EM-FJ-VBC32CB	32 mm	£6.44
EM-FJ-VBC40CB	40 mm	£7.12
EM-FJ-VBC50CB	50 mm	£10.32
EM-FJ-VBC63CB	63 mm	£13.96
EM-FJ-VBC80CB	80 mm	£17.32
EM-FJ-VBC100CB	100 mm	£27.32
EM-FJ-VBC125CB	125 mm	£39.78

PART NUMBER	CYLINDER BORE	THREAD	PRICE
EM-FJ-M10X1.25YCJ	32 mm	M10x1.25	£7.04
EM-FJ-M12X1.25YCJ	40 mm	M12x1.25	£8.32
EM-FJ-M16X1.5YCJ	50 mm / 63 mm	M16x1.5	£13.08
EM-FJ-M20X1.5YCJ	80 mm / 100 mm	M20x1.5	£23.24
EM-FJ-M27X2YCJ	125 mm	M27x2	£56.32



**MALE REAR TRUNNION**

3610



**PISTON ROD SPHERICAL ROD EYE**

3610

PART NUMBER	CYLINDER BORE	PRICE
EM-FJ-VBC32CA	32 mm	£5.56
EM-FJ-VBC40CA	40 mm	£6.28
EM-FJ-VBC50CA	50 mm	£7.72
EM-FJ-VBC63CA	63 mm	£9.76
EM-FJ-VBC80CA	80 mm	£16.04
EM-FJ-VBC100CA	100 mm	£19.88
EM-FJ-VBC125CA	125 mm	£30.60

PART NUMBER	CYLINDER BORE	THREAD	PRICE
EM-FJ-M10X1.25BJ	32 mm	M10x1.25	£5.48
EM-FJ-M12X1.25BJ	40 mm	M12x1.25	£6.36
EM-FJ-M16X1.5BJ	50 mm / 63 mm	M16x1.5	£10.04
EM-FJ-M20X1.5BJ	80 mm / 100 mm	M20x1.5	£17.28
EM-FJ-M27X2BJ	125 mm	M27x2	£40.96



**90° MALE REAR TRUNNION**

3610



**PISTON ROD FLOATING JOINT**

3610

PART NUMBER	CYLINDER BORE	PRICE
EM-FJ-VBC32CR	32 mm	£7.96
EM-FJ-VBC40CR	40 mm	£10.04
EM-FJ-VBC50CR	50 mm	£13.80
EM-FJ-VBC63CR	63 mm	£17.56
EM-FJ-VBC80CR	80 mm	£25.92
EM-FJ-VBC100CR	100 mm	£35.16
EM-FJ-VBC125CR	125 mm	£41.44

PART NUMBER	CYLINDER BORE	THREAD	PRICE
EM-FJ-M10X1.25FD	32 mm	M10x1.25	£12.24
EM-FJ-M12X1.25FD	40 mm	M12x1.25	£15.48
EM-FJ-M16X1.5FD	50 mm / 63 mm	M16x1.5	£26.20
EM-FJ-M20X1.5FD	80 mm / 100 mm	M20x1.5	£34.16
EM-FJ-M27X2FD	125 mm	M27x2	£72.28



**FRONT OR REAR FLANGE**

3610



**FEET (2 PIECES)**

3610

PART NUMBER	CYLINDER BORE	PRICE
EM-FJ-VBC32FA	32 mm	£10.65
EM-FJ-VBC40FA	40 mm	£12.41
EM-FJ-VBC50FA	50 mm	£17.73
EM-FJ-VBC63FA	63 mm	£21.30
EM-FJ-VBC80FA	80 mm	£31.94
EM-FJ-VBC100FA	100 mm	£42.59
EM-FJ-VBC125FA	125 mm	£47.81

PART NUMBER	CYLINDER BORE	PRICE
EM-FJ-VBC32LB	32 mm	£3.84
EM-FJ-VBC40LB	40 mm	£5.76
EM-FJ-VBC50LB	50 mm	£7.64
EM-FJ-VBC63LB	63 mm	£11.48
EM-FJ-VBC80LB	80 mm	£13.40
EM-FJ-VBC100LB	100 mm	£15.32
EM-FJ-VBC125LB	125 mm	£28.69



### FVBC SERIES MAGNETIC SWITCH

3610

PART NUMBER	DESCRIPTION	PRICE
EM-HX-31R	2 wire reed auto switch SPST normally open Operating voltage 5–240V DC / AC Red LED indicator 1m cable IP67 rated surge protection	£9.68
EM-HX-31N	NPN 3 wire solid state auto switch Normally open (input) Operating voltage 5–30V DC Red LED indicator 1 mtr cable IP67 rated surge protection	£27.68
EM-HX-31P	PNP 3 wire solid state auto switch Normally open (output) Operating voltage 5–30V DC Yellow LED indicator 1 mtr cable IP67 rated surge protection	£27.68

### CYLINDER SEAL KIT SUITABLE FOR VBC & FVBC SERIES

3610

PART NUMBER	BORE SIZE	PRICE
EM-VBC32-XLB	32 mm	£10.40
EM-VBC40-XLB	40 mm	£12.96
EM-VBC50-XLB	50 mm	£15.52
EM-VBC63-XLB	63 mm	£17.80
EM-VBC80-XLB	80 mm	£21.56
EM-VBC100-XLB	100 mm	£24.68
EM-VBC125-XLB	125 mm	£29.28



### VBC SERIES HX21 SWITCH CLAMP ALUMINIUM ALLOY

3610

PART NUMBER	BORE	PRICE
EM-PI-1	32/40 mm	£2.40
EM-PI-2	50/63 mm	£2.40
EM-PI-3	80 mm	£4.36
EM-PI-4	100 mm	£4.36
EM-PI-5	125 mm	£7.84

### HX-07 MAGNETIC SWITCH FOR USE WITH SQ, SGM & EXH SERIES



3610

PART NUMBER	DESCRIPTION	PRICE
EM-HX-07R	Standard 2 wire reed switch Normally open Operating vottage 5-240V DC/AC Red LED indicator 1 mtr cable IP67 rated	£7.18
EM-HX-07N	NPN 3 wire solid state auto switch Normally open (input) Operating voltage 5-30V DC Red LED indicator 1 mtr cable IP67 rated surge protection	£22.14
EM-HX-07P	PNP 3 wire solid state auto switch Normally open (output) Operating voltage 5-30V DC Yellow LED indicator 1mtr cable IP67 rated surge protection	£22.14



### VBC SERIES MAGNETIC SWITCH

3610

PART NUMBER	DESCRIPTION	PRICE
EM-HX-21R	Standard 2 wire reed switch Normally open Operating voltage 5-240V DC/AC 1 mtr cable IP67 rated surge protection	£7.85
EM-HX-21N	NPN 3 wire solid state auto switch Normally open (input) Operating voltage 5-30V DC Red LED indicator 1 mtr cable IP67 rated surge protection	£26.49
EM-HX-21P	PNP 3 wire solid state auto switch Normally open (output) Operating voltage 5-30V DC Yellow LED indicator 1 mtr cable IP67 rated surge protection	£26.49

### HX-01 MAGNETIC SWITCH FOR USE WITH SE SERIES

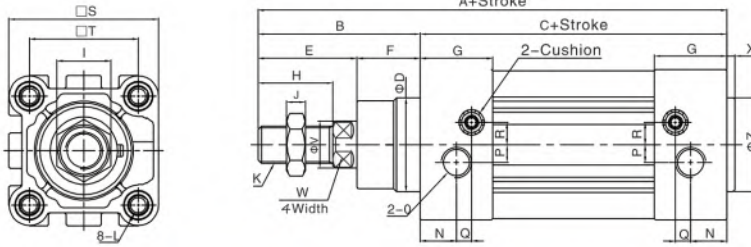


3610

PART NUMBER	DESCRIPTION	PRICE
EM-HX-01R	Standard reed switch 2 wire Normally open Operating voltage 5-240V DC/AC Red LED indicator 1 mtr flying lead IP67 rated	£8.73
EM-HX-01N	NPN 3 wire solid state auto switch Normally open (input) Operating voltage 5-30V DC Red LED indicator 1 mtr flying lead IP67 rated	£26.15
EM-HX-01P	PNP 3 wire solid state auto switch Normally open (output) Operating voltage 5-30V DC Yellow LED indicator 1 mtr flying lead IP67 rated surge protection	£26.15

EMC-FVBC SERIES

FVBC



(mm)

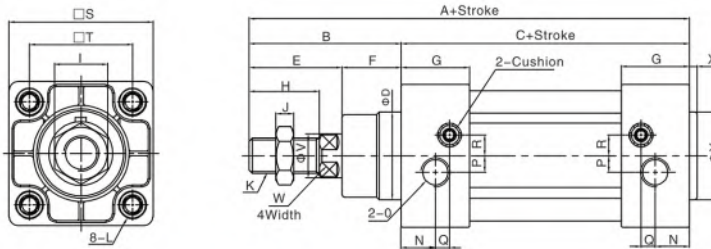
Bore/Sign	A	B	C	D	E	F	G	H	I	J	K	L	N	O	P	Q	R	S	T	V	W	X	Z
32	142	48	94	30	29	19	27.5	22	17	6	M10x1.25	M6 Dp.16	13	1/8"	5.5	6	6	46.5	32.5	12	10	3	30
40	159	54	105	35	33	21	32	24	17	7	M12x1.25	M6 Dp.16	17	1/4"	6	7.5	8.5	54	38	16	13	3.5	35
50	175	69	106	40	42	27	31	32	23	8	M16x1.5	M8 Dp.16	15.5	1/4"	7.5	6.5	9.5	64	46.5	20	17	3.5	40
63	190	69	121	45	42	27	33	32	23	8	M16x1.5	M8 Dp.16	16.5	3/8"	7.5	7.5	11.5	75	56.5	20	17	4	45
80	214	86	128	45	53	33	33	40	26	10	M20x1.5	M10 Dp.17	16.5	3/8"	8	8.5	12.5	93	72	25	22	4	45
100	229	91	138	55	55	36	37	40	26	10	M20x1.5	M10 Dp.17	19.5	1/2"	10	7	12	110	89	25	22	4	55

Note:With magnet and without magnet,the dimensions are same.

Six

EMC-VBC SERIES

VBC



(mm)

Bore/Sign	A	B	C	D	E	F	G	H	I	J	K	L	N	O	P	Q	R	S	T	V	W	X	Y
32	142	48	94	30	29	19	27.5	22	17	6	M10x1.25	M6 depth16	13	1/8"	5.5	6	6	47	32.5	12	10	3	30
40	159	54	105	35	33	21	32	24	17	7	M12x1.25	M6 depth16	17	1/4"	6	7.5	8.5	53	38	16	13	3.5	35
50	175	69	106	40	42	27	31	32	23	8	M16x1.5	M8 depth16	15.5	1/4"	7.5	6.5	9.5	65	46.5	20	17	3.5	40
63	190	69	121	45	42	27	33	32	23	8	M16x1.5	M8 depth16	16.5	3/8"	7.5	7.5	11.5	75	56.5	20	17	4	45
80	214	86	128	45	53	33	33	40	26	10	M20x1.5	M10 depth17	16.5	3/8"	9	7.5	13.5	95	72	25	22	4	45
100	229	91	138	55	55	36	37	40	26	10	M20x1.5	M10 depth17	18.5	1/2"	9.5	8.5	13.5	115	89	25	22	4	55
125	279	119	160	60	74	45	46	54	41	13.5	M27x2.0	M12 depth20	23	1/2"	14	12	14	140	110	32	27	-	-
160	332	152	180	65	94	58	50	72	55	18	M36x2.0	M16 depth24	25	3/4"	15	12	20	180	140	40	36	-	-
200	347	167	180	75	110	57	50	72	55	18	M36x2.0	M16 depth24	25	3/4"	-	-	-	220	175	40	36	-	-
250	388	188	200	90	121	67	52	84	65	21	M42x2.0	M20 depth25	26.5	1"	20.5	7.5	21	270	220	50	45	10	90

Note:With magnet and without magnet,the dimensions are same.

## SQ COMPACT SERIES

### DESCRIPTION

SQ series compact pneumatic cylinder, bore size ranges from 12 – 100 mm, with grease and all dynamic seals imported. Stronger self-lubricating bronze bearings give high guiding performance and concentricity for the compact cylinder, while piston rod and rod connection is designed with rotary riveting structure, ensuring high concentricity, smooth running and low starting pressure.

The compact cylinder is designed with slots for magnetic switches in 3 sides, easier to mount. Rear cap and cylinder body are riveted together with superior assembling reliability, while front cap and barrel are connected by buckle for easier maintenance.

### FEATURES

- All dynamic seals from Japan, with German grease, longer life
- Strong self-lubricating bronze bearings, high lateral loading performance
- Piston rod and rod connection is rotary riveted, high concentricity
- Rear cover and body are riveted together, reliable

### SPECIFICATIONS

Cylinder type	Double acting, magnetic positioning
Max. working pressure	10 bar
Operating temperature	-20°C to +80°C (dry air)
Available bore size	ø16, ø20, ø25, ø32, ø40, 50 mm
Available stroke length	0-100 mm
Cushion type	Anti-bump cushioning
Mounting type	Through hole mounting



### SQ SERIES DIAMOND PROFILE CYLINDER

#### 16 BORE

3620

PART NUMBER	BORE	STROKE	PRICE
EM-SQ16X30-S	16 mm	30 mm	£18.04

#### 20 BORE

EM-SQ20X10-S	20 mm	10 mm	£15.89
EM-SQ20X15-S	20 mm	15 mm	£16.61
EM-SQ20X20-S	20 mm	20 mm	£17.33
EM-SQ20X25-S	20 mm	25 mm	£18.06
EM-SQ20X30-S	20 mm	30 mm	£18.78
EM-SQ20X40-S	20 mm	40 mm	£20.23
EM-SQ20X50-S	20 mm	50 mm	£21.68

#### 25 BORE

EM-SQ25X10-S	25 mm	10 mm	£16.61
EM-SQ25X15-S	25 mm	15 mm	£17.33
EM-SQ25X20-S	25 mm	20 mm	£18.06
EM-SQ25X25-S	25 mm	25 mm	£18.78
EM-SQ25X30-S	25 mm	30 mm	£19.50
EM-SQ25X40-S	25 mm	40 mm	£20.95
EM-SQ25X50-S	25 mm	50 mm	£22.40

### SQ SERIES SQUARE PROFILE CYLINDER

#### 32 BORE

3620

PART NUMBER	BORE	STROKE	PRICE
EM-SQ32X10-S	32 mm	10 mm	£19.79
EM-SQ32X15-S	32 mm	15 mm	£20.72
EM-SQ32X20-S	32 mm	20 mm	£21.68
EM-SQ32X25-S	32 mm	25 mm	£22.61
EM-SQ32X30-S	32 mm	30 mm	£23.54
EM-SQ32X40-S	32 mm	40 mm	£25.43
EM-SQ32X50-S	32 mm	50 mm	£27.31

#### 40 BORE

EM-SQ40X10-S	40 mm	10 mm	£24.06
EM-SQ40X15-S	40 mm	15 mm	£25.00
EM-SQ40X20-S	40 mm	20 mm	£25.94
EM-SQ40X25-S	40 mm	25 mm	£26.88
EM-SQ40X30-S	40 mm	30 mm	£27.83
EM-SQ40X40-S	40 mm	40 mm	£26.55
EM-SQ40X50-S	40 mm	50 mm	£31.58

#### 50 BORE

EM-SQ50X10-S	50 mm	10 mm	£28.27
EM-SQ50X15-S	50 mm	15 mm	£29.53
EM-SQ50X20-S	50 mm	20 mm	£30.78
EM-SQ50X25-S	50 mm	25 mm	£32.04
EM-SQ50X30-S	50 mm	30 mm	£32.98
EM-SQ50X40-S	50 mm	40 mm	£35.50
EM-SQ50X50-S	50 mm	50 mm	£38.02

Available upon request:  
 - 80/100 mm bore  
 - Single acting male threaded piston rods  
 - Single acting cylinder with spring return / spring extend.

Additional strokes available on all bore sizes.



**SF SERIES**
**DESCRIPTION**

SF series ISO21287 standard compact pneumatic cylinder, bore size ranges from 20 – 100 mm. Stronger self-lubricating bronze bearings give high guiding performance and concentricity for the compact cylinder, while piston rod and rod connection is designed with rotary riveting structure, ensuring high concentricity, smooth running and low starting pressure.

The compact cylinder is designed with slots for magnetic switches in 4 sides, while various mountings are available. Rear cap and cylinder body are riveted together with superior assembling reliability, while front cap and barrel are connected by buckle for easier maintenance.

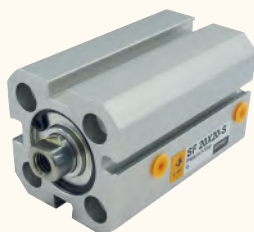
**SPECIFICATIONS**

Cylinder type	Double acting, magnetic positioning
Max. working pressure	10 bar
Operating temperature	-20°C to +80°C (dry air)
Available bore size	ø20 – 100 mm
Available stroke length	10 – 50 mm
Cushion type	Rubber

**FEATURES / BENEFITS**

ISO21287 standard cylinder  
 Compact structure, 50% space saving compared to ISO15552 standard pneumatic cylinders  
 Double-ended cushion gasket, provides smooth reversing, less impact and mechanical damage  
 Rotary riveted piston rod and rod connection, offering high concentricity  
 Riveted rear cover and body for reliability

Six


**SF SERIES**
**20 BORE**

3620

PART NUMBER	BORE	STROKE	PRICE
EM-SF20X10-S	20 mm	10 mm	£19.42
EM-SF20X15-S	20 mm	15 mm	£20.00
EM-SF20X20-S	20 mm	20 mm	£20.64
EM-SF20X25-S	20 mm	25 mm	£21.16
EM-SF20X30-S	20 mm	30 mm	£21.73
EM-SF20X40-S	20 mm	40 mm	£22.89
EM-SF20X50-S	20 mm	50 mm	£24.04

**25 BORE**

EM-SF25X10-S	25 mm	10 mm	£22.58
EM-SF25X15-S	25 mm	15 mm	£23.24
EM-SF25X20-S	25 mm	20 mm	£23.91
EM-SF25X25-S	25 mm	25 mm	£24.58
EM-SF25X30-S	25 mm	30 mm	£25.24
EM-SF25X40-S	25 mm	40 mm	£26.57
EM-SF25X50-S	25 mm	50 mm	£27.92

**32 BORE**

EM-SF32X10-S	32 mm	10 mm	£24.32
EM-SF32X15-S	32 mm	15 mm	£24.90
EM-SF32X20-S	32 mm	20 mm	£25.48
EM-SF32X25-S	32 mm	25 mm	£26.06
EM-SF32X30-S	32 mm	30 mm	£26.63
EM-SF32X40-S	32 mm	40 mm	£27.79
EM-SF32X50-S	32 mm	50 mm	£28.93

**40 BORE**

PART NUMBER	BORE	STROKE	PRICE
EM-SF40X10-S	40 mm	10 mm	£25.86
EM-SF40X15-S	40 mm	15 mm	£26.52
EM-SF40X20-S	40 mm	20 mm	£27.18
EM-SF40X25-S	40 mm	25 mm	£27.85
EM-SF40X30-S	40 mm	30 mm	£28.53
EM-SF40X40-S	40 mm	40 mm	£28.51
EM-SF40X50-S	40 mm	50 mm	£31.19

**50 BORE**

EM-SF50X10-S	50 mm	10 mm	£31.15
EM-SF50X15-S	50 mm	15 mm	£31.97
EM-SF50X20-S	50 mm	20 mm	£32.79
EM-SF50X25-S	50 mm	25 mm	£33.61
EM-SF50X30-S	50 mm	30 mm	£34.44
EM-SF50X40-S	50 mm	40 mm	£36.08
EM-SF50X50-S	50 mm	50 mm	£37.71

**63 BORE**

EM-SF63X10-S	63 mm	10 mm	£38.76
EM-SF63X15-S	63 mm	15 mm	£39.80
EM-SF63X20-S	63 mm	20 mm	£40.83
EM-SF63X25-S	63 mm	25 mm	£41.85
EM-SF63X30-S	63 mm	30 mm	£42.89
EM-SF63X40-S	63 mm	40 mm	£44.96
EM-SF63X50-S	63 mm	50 mm	£47.02

## EXS-M SERIES

### DESCRIPTION

The EXS-M is a twin rod precision guided cylinder with a slide bearing. It features a double cylinder construction for increased force from a compact profile and good resistance to side loads. The cylinder has a number of mounting points. Adjustable return stroke cushion 0 – 5 mm.

### SPECIFICATIONS

Cylinder type	Double acting, magnetic positioning
Max. working pressure	10 bar
Operating temperature	-20°C to +80°C (dry air)
Available bore sizes	ø6 – 32 mm
Available stroke length	25 – 200 mm
Cushion type	Cushioned both ends, adjustable on return stroke 0 – 5mm



3660

### EXS SERIES GUIDED CYLINDER

#### 10 BORE

PART NUMBER	BORE	STROKE	PRICE
EM-EXSM10X25-S	10 mm	25 mm	£114.83
EM-EXSM10X50-S	10 mm	50 mm	£126.10
EM-EXSM10X75-S	10 mm	75 mm	£147.78

#### 16 BORE

EM-EXSM16X25-S	16 mm	25 mm	£121.33
EM-EXSM16X50-S	16 mm	50 mm	£133.48
EM-EXSM16X75-S	16 mm	75 mm	£156.43

#### 20 BORE

EM-EXSM20X10-S	20 mm	10 mm	£126.53
EM-EXSM20X25-S	20 mm	25 mm	£140.83
EM-EXSM20X50-S	20 mm	50 mm	£163.38
EM-EXSM20X75-S	20 mm	75 mm	£180.70

#### 25 BORE

EM-EXSM25X25-S	25 mm	25 mm	£149.93
EM-EXSM25X50-S	25 mm	50 mm	£171.60
EM-EXSM25X75-S	25 mm	75 mm	£195.00

#### 32 BORE

EM-EXSM32X25-S	32 mm	25 mm	£192.40
EM-EXSM32X50-S	32 mm	50 mm	£226.63
EM-EXSM32X75-S	32 mm	75 mm	£253.08

Alternative stroke sizes available upon request.

## SGM SERIES

### DESCRIPTION

The SGM cylinder is a triple rod, heavy duty, guided cylinder with a slide bearing. The construction offers a strong resistance to side load forces and has a number of mounting points for convenient installation.

### SPECIFICATIONS

Cylinder type	Double acting, magnetic positioning
Max. working pressure	10 bar
Operating temperature	-20°C to +80°C (dry air)
Available bore sizes	ø12 – 63 mm
Available stroke sizes	25 – 250 mm
Cushion type	Rubber cushioned



3660

### SGM SERIES TRIPLE ROD GUIDED CYLINDER

#### 12 BORE

PART NUMBER	BORE	STROKE	PRICE
EM-SGM12X25-S	12 mm	25 mm	£111.70
EM-SGM12X50-S	12 mm	50 mm	£126.80
EM-SGM12X75-S	12 mm	75 mm	£135.00

#### 16 BORE

EM-SGM16X25-S	16 mm	25 mm	£116.70
EM-SGM16X50-S	16 mm	50 mm	£131.80
EM-SGM16X75-S	16 mm	75 mm	£140.00

#### 20 BORE

EM-SGM20X25-S	20 mm	25 mm	£129.70
EM-SGM20X50-S	20 mm	50 mm	£146.45
EM-SGM20X75-S	20 mm	75 mm	£155.55

#### 25 BORE

EM-SGM25X25-S	25 mm	25 mm	£155.20
EM-SGM25X50-S	25 mm	50 mm	£173.05
EM-SGM25X75-S	25 mm	75 mm	£182.90

#### 32 BORE

EM-SGM32X25-S	32 mm	25 mm	£206.93
EM-SGM32X50-S	32 mm	50 mm	£224.40
EM-SGM32X75-S	32 mm	75 mm	£258.65

#### 40 BORE

EM-SGM40X25-S	40 mm	25 mm	£221.50
EM-SGM40X50-S	40 mm	50 mm	£240.08
EM-SGM40X75-S	40 mm	75 mm	£273.23

#### 50 BORE

EM-SGM50X25-S	50 mm	25 mm	£252.10
EM-SGM50X50-S	50 mm	50 mm	£273.95
EM-SGM50X75-S	50 mm	75 mm	£310.40

#### 63 BORE

EM-SGM63X25-S	63 mm	25 mm	£291.45
EM-SGM63X50-S	63 mm	50 mm	£317.68
EM-SGM63X75-S	63 mm	75 mm	£366.13



**A TYPE SILENCER**  
BRASS & SINTERED BRONZE

3690



**EXHAUST SILENCER**  
WITH FLOW CONTROL  
BRASS & SINTERED BRONZE

3690

PART NUMBER	DB LEVEL (6 BAR)	THREAD SIZE	PRICE
EM-A-M5	-	M5	£0.54
EM-A-06G	76	1/8" BSPP	£0.72
EM-A-08G	75	1/4" BSPP	£1.19
EM-A-10G	88	3/8" BSPP	£2.04
EM-A-15G	89	1/2" BSPP	£2.62
EM-A-20G	92 @ 4 bar	3/4" BSPP	£5.13
EM-A-25G	-	1" BSPP	£9.54
EM-A-32G	-	1 1/4" BSPP	£27.41
EM-A-40G	-	1 1/2" BSPP	£35.75
EM-A-50G	-	2" BSPP	£51.24

PART NUMBER	DB LEVEL (6 BAR)	THREAD SIZE	PRICE
EM-SD-06G	72	1/8" BSPP	£1.73
EM-SD-08G	73	1/4" BSPP	£2.27
EM-SD-10G	84	3/8" BSPP	£3.82
EM-SD-15G	88	1/2" BSPP	£6.44
EM-SD-20G	92 @ 4 bar	3/4" BSPP	£13.71
EM-SD-25G	92 @ 4 bar	1" BSPP	£24.43



**SET TYPE SILENCER**  
BRASS & SINTERED BRONZE

3690



**AAS TYPE SILENCER**  
STAINLESS STEEL 304

3690

PART NUMBER	DB LEVEL (6 BAR)	THREAD SIZE	PRICE
EM-SET-06G	81	1/8" BSPP	£1.20
EM-SET-08G	83	1/4" BSPP	£1.98
EM-SET-10G	87	3/8" BSPP	£4.16
EM-SET-15G	90	1/2" BSPP	£7.04
EM-SET-20G	-	3/4" BSPP	£13.41
EM-SET-25G	92 @ 4 bar	1" BSPP	£21.79

PART NUMBER	THREAD SIZE	PRICE
EM-AAS-M5	M5	£3.58
EM-AAS-06G	1/8" BSPP	£4.35
EM-AAS-08G	1/4" BSPP	£6.56
EM-AAS-10G	3/8" BSPP	£11.32
EM-AAS-15G	1/2" BSPP	£14.90
EM-AAS-20G	3/4" BSPP	£33.37
EM-AAS-25G	1" BSPP	£56.01



**V TYPE SILENCER**

3690



**VDS TYPE SILENCER**  
STAINLESS STEEL 304

3690

PART NUMBER	DB LEVEL (6 BAR)	THREAD SIZE	PRICE
EM-V-06G	73	1/8" BSPP	£0.55
EM-V-08G	74	1/4" BSPP	£0.84
EM-V-10G	85	3/8" BSPP	£1.19
EM-V-15G	89	1/2" BSPP	£1.71
EM-V-20G	90	3/4" BSPP	£2.98
EM-V-25G	90	1" BSPP	£5.44

PART NUMBER	THREAD SIZE	PRICE
EM-VDS-M5	M5	£3.90
EM-VDS-06G	1/8" BSPP	£5.20
EM-VDS-08G	1/4" BSPP	£7.80
EM-VDS-10G	3/8" BSPP	£12.13
EM-VDS-15G	1/2" BSPP	£17.33
EM-VDS-20G	3/4" BSPP	£28.59
EM-VDS-25G	1" BSPP	£44.18



**VD DOME TYPE SILENCER**  
BRASS

3690



**VSS TYPE SILENCER**  
STAINLESS STEEL 304

3690

PART NUMBER	DB LEVEL (6 BAR)	THREAD SIZE	PRICE
EM-VD-06G	74	1/8" BSPP	£2.80
EM-VD-08G	72	1/4" BSPP	£3.73
EM-VD-10G	88	3/8" BSPP	£5.13
EM-VD-15G	90	1/2" BSPP	£6.52
EM-VD-20G	90	3/4" BSPP	£9.32
EM-VD-25G	92	1" BSPP	£15.84

PART NUMBER	THREAD SIZE	PRICE
EM-VSS-M5	M5	£2.70
EM-VSS-06S1G	1/8" BSPP	£3.82
EM-VSS-08S1G	1/4" BSPP	£5.37
EM-VSS-10G	3/8" BSPP	£7.90
EM-VSS-15G	1/2" BSPP	£10.30
EM-VSS-20G	3/4" BSPP	£19.50
EM-VSS-25G	1" BSPP	£32.50



### SU TYPE SILENCER ACETAL RESIN

3690

PART NUMBER	DB LEVEL (6 BAR)	THREAD SIZE	PRICE
EM-SU-06OG	87	1/8" BSPP	£0.50
EM-SU-08OG	84	1/4" BSPP	£0.60
EM-SU-10OG	90	3/8" BSPP	£0.84
EM-SU-15OG	90	1/2" BSPP	£0.96
EM-SU-20OG	91	3/4" BSPP	£7.15
EM-SU-25OG	90	1" BSPP	£8.34



### AB TYPE SILENCER

3690

PART NUMBER	THREAD SIZE	PRICE
EM-AB-06G	1/8" BSPP	£5.95
EM-AB-08G	1/4" BSPP	£7.90
EM-AB-10G	3/8" BSPP	£9.90
EM-AB-15G	1/2" BSPP	£16.80
EM-AB-20G	3/4" BSPP	£21.25
EM-AB-25G	1" BSPP	£34.60
EM-AB-32G	1 1/4" BSPP	£118.65
EM-AB-40G	1 1/2" BSPP	£148.30
EM-AB-50G	2" BSPP	£197.75



### PSU TYPE SILENCER

3690

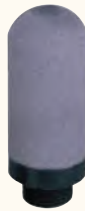
PART NUMBER	THREAD SIZE	PRICE
EM-PSU-06OG	1/8" BSPP	£0.68
EM-PSU-08OG	1/4" BSPP	£0.96
EM-PSU-10OG	3/8" BSPP	£1.84
EM-PSU-15OG	1/2" BSPP	£2.80
EM-PSU-20OG	3/4" BSPP	£6.09
EM-PSU-25OG	1" BSPP	£9.14



### SC TYPE SILENCER

3690

PART NUMBER	THREAD SIZE	PRICE
EM-SC-06G	1/8" BSPP	£2.86
EM-SC-08G	1/4" BSPP	£3.70
EM-SC-10G	3/8" BSPP	£4.77
EM-SC-15G	1/2" BSPP	£7.93
EM-SC-20G	3/4" BSPP	£13.61
EM-SC-25G	1" BSPP	£30.87



### PSE TYPE SILENCER

3690

PART NUMBER	THREAD SIZE	PRICE
EM-PSE-M5	M5	£0.85
EM-PSE-06G	1/8" BSPP	£0.90
EM-PSE-08G	1/4" BSPP	£1.50
EM-PSE-10G	3/8" BSPP	£3.05
EM-PSE-15G	1/2" BSPP	£3.25
EM-PSE-20G	3/4" BSPP	£9.25
EM-PSE-25G	1" BSPP	£15.75



### SK TYPE SILENCER

3690

PART NUMBER	THREAD SIZE	PRICE
EM-SK-06G	1/8" BSPP	£4.66
EM-SK-08G	1/4" BSPP	£6.06
EM-SK-10G	3/8" BSPP	£7.63
EM-SK-15G	1/2" BSPP	£13.05
EM-SK-20G	3/4" BSPP	£20.85
EM-SK-25G	1" BSPP	£31.30



### SB TYPE EXHAUST SILENCER WITH FLOW CONTROL

3690

PART NUMBER	THREAD SIZE	PRICE
EM-SB-06G	1/8" BSPP	£2.52
EM-SB-08G	1/4" BSPP	£2.84
EM-SB-10G	3/8" BSPP	£4.32
EM-SB-15G	1/2" BSPP	£6.58
EM-SB-20G	3/4" BSPP	£11.80
EM-SB-25G	1" BSPP	£25.42



### SPK TYPE SILENCER

3690

PART NUMBER	THREAD SIZE	PRICE
EM-SPK-06G	1/8" BSPP	£5.59
EM-SPK-08G	1/4" BSPP	£7.93
EM-SPK-10G	3/8" BSPP	£13.98
EM-SPK-15G	1/2" BSPP	£27.02
EM-SPK-20G	3/4" BSPP	£45.72
EM-SPK-25G	1" BSPP	£55.90

## RV SERIES

### SPECIFICATIONS

Working medium	Clean air
Working pressure	1.5 – 8 bar
Guaranteed pressure	12 bar
Working temperature	-20°C to +70°C (dry air)
Valve type	3/2, 5/2 and 5/3
Acting type	Internal pilot / external pilot type



Six

### RV SERIES PILOT VALVE

3/2 SINGLE PILOT  
NORMALLY CLOSED  
SPRING RETURN



3630

RV SERIES PILOT VALVE  
5/3 DOUBLE PILOT  
CENTRE CLOSED



3630

PART NUMBER	FUNCTION	BODY SIZE	PORT SIZE	PRICE
● EM-RVA3211-06Q	3/2	18 mm	1/8"	£35.01
● EM-RVA3221-08Q	3/2	22 mm	1/4"	£33.27
● EM-RVA3231-10	3/2	27 mm	3/8"	£40.89
● EM-RVA3241-15	3/2	34 mm	1/2"	£65.67

\* Air return for products ending in Q

PART NUMBER	FUNCTION	BODY SIZE	EXHAUST	INLET	PRICE
● EM-RVA5312C-06	5/3	18 mm	1/8"	1/8"	£84.20
● EM-RVA5322C-08	5/3	22 mm	1/8"	1/4"	£70.31
● EM-RVA5332C-10	5/3	27 mm	1/4"	3/8"	£91.44
● EM-RVA5342C-15	5/3	34 mm	1/2"	1/2"	£117.27

### RV SERIES PILOT VALVE

3/2 DOUBLE PILOT  
NORMALLY CLOSED



3630

RV SERIES PILOT VALVE  
5/3 DOUBLE PILOT  
PRESSURED CENTRE



3630

PART NUMBER	FUNCTION	BODY SIZE	PORT SIZE	PRICE
● EM-RVA3212-06Q	3/2	18 mm	1/8"	£47.01
● EM-RVA3222-08Q	3/2	22 mm	1/4"	£48.39
● EM-RVA3232-10	3/2	27 mm	3/8"	£57.42
● EM-RVA3242-15	3/2	34 mm	1/2"	£87.48

PART NUMBER	FUNCTION	BODY SIZE	EXHAUST	INLET	PRICE
● EM-RVA5312P-06	5/3	18 mm	1/8"	1/8"	£117.27
● EM-RVA5322P-08	5/3	22 mm	1/8"	1/4"	£70.31
● EM-RVA5332P-10	5/3	27 mm	1/4"	3/8"	£91.44
● EM-RVA5342P-15	5/3	34 mm	1/2"	1/2"	£117.27

### RV SERIES PILOT VALVE

5/2 SINGLE PILOT  
SPRING RETURN



3630

RV SERIES PILOT VALVE  
5/3 DOUBLE PILOT  
CENTRE EXHAUST



3630

PART NUMBER	FUNCTION	BODY SIZE	EXHAUST	INLET	PRICE
● EM-RVA5211-06Q	5/2	18 mm	1/8"	1/8"	£33.39
● EM-RVA5221-08Q	5/2	22 mm	1/8"	1/4"	£31.74
● EM-RVA5231-10Q	5/2	27 mm	1/4"	3/8"	£38.91
● EM-RVA5241-15	5/2	34 mm	1/2"	1/2"	£62.52

\* Air return for products ending in Q

PART NUMBER	FUNCTION	BODY SIZE	EXHAUST	INLET	PRICE
● EM-RVA5312E-06	5/3	18 mm	1/8"	1/8"	£84.20
● EM-RVA5322E-08	5/3	22 mm	1/8"	1/4"	£70.31
● EM-RVA5332E-10	5/3	27 mm	1/4"	3/8"	£91.44
● EM-RVA5342E-15	5/3	34 mm	1/2"	1/2"	£117.27

### RV SERIES PILOT VALVE

5/2 DOUBLE PILOT



3630

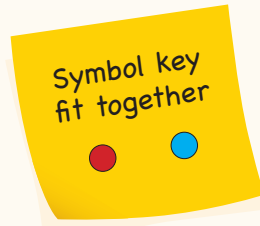
PART NUMBER	FUNCTION	BODY SIZE	EXHAUST	INLET	PRICE
● EM-RVA5212-06	5/2	18 mm	1/8"	1/8"	£47.01
● EM-RVA5222-08	5/2	22 mm	1/8"	1/4"	£46.11
● EM-RVA5232-10	5/2	27 mm	1/4"	3/8"	£54.69
● EM-RVA5242-15	5/2	34 mm	1/2"	1/2"	£89.37



## RV SERIES – BODY ONLY

### SPECIFICATIONS

Working medium	Clean air
Working pressure	1.5 – 8 bar
Guaranteed pressure	12 bar
Working temperature	-20°C to +70°C (dry air)
Valve type	3/2, 5/2 and 5/3
Acting type	Pilot type



### RV SERIES 3/2 SINGLE SOLENOID NORMALLY CLOSED



3640

### RV SERIES 5/3 DOUBLE SOLENOID CENTRE CLOSED



3640

PART NUMBER	FUNCTION	BODY SIZE	PORT SIZE	PRICE
● EM-RV3211-06Q-WX	3/2	18 mm	1/8"	£40.23
● EM-RV3221-08Q-WX	3/2	22 mm	1/4"	£33.83
● EM-RV3241-15-WX	3/2	34 mm	1/2"	£85.65

PART NUMBER	FUNCTION	BODY SIZE	EXHAUST INLET	PRICE
● EM-RV5312C-06-WX	5/3	18 mm	1/8" 1/8"	£98.61
● EM-RV5322C-08-WX	5/3	22 mm	1/4" 1/4"	£94.80
● EM-RV5342C-15-WX	5/3	34 mm	1/2" 1/2"	£161.53

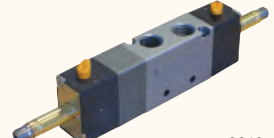
\* Air return available for products ending in Q

### RV SERIES 3/2 DOUBLE SOLENOID NORMALLY CLOSED



3640

### RV SERIES 5/3 DOUBLE SOLENOID PRESSURE HELD



3640

PART NUMBER	FUNCTION	BODY SIZE	PORT SIZE	PRICE
● EM-RV3212-06-WX	3/2	18 mm	1/8"	£69.88
● EM-RV3222-08-WX	3/2	22 mm	1/4"	£63.44
● EM-RV3242-15-WX	3/2	34 mm	1/2"	£125.63

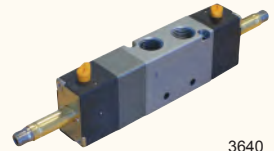
PART NUMBER	FUNCTION	BODY SIZE	EXHAUST INLET	PRICE
● EM-RV5312P-06-WX	5/3	18 mm	1/8" 1/8"	£102.21
● EM-RV5322P-08-WX	5/3	22 mm	1/4" 1/4"	£94.80
● EM-RV5342P-15-WX	5/3	34 mm	1/2" 1/2"	£161.53

### RV SERIES 5/2 SINGLE SOLENOID



3640

### RV SERIES 5/3 DOUBLE SOLENOID PRESSURE EXHAUST



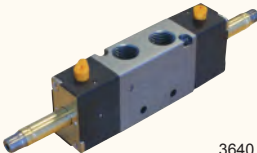
3640

PART NUMBER	FUNCTION	BODY SIZE	EXHAUST INLET	PRICE
● EM-RV5211-06Q-WX	5/2	18 mm	1/8" 1/8"	£40.23
● EM-RV5221-08Q-WX	5/2	22 mm	1/8" 1/4"	£33.83
● EM-RV5241-15-WX	5/2	34 mm	1/2" 1/2"	£85.65

PART NUMBER	FUNCTION	BODY SIZE	EXHAUST INLET	PRICE
● EM-RV5312E-06-WX	5/3	18 mm	1/8" 1/8"	£102.21
● EM-RV5322E-08-WX	5/3	22 mm	1/4" 1/4"	£94.80
● EM-RV5342E-15-WX	5/3	34 mm	1/2" 1/2"	£161.53

\* Air return available for products ending in Q

### RV SERIES 5/2 DOUBLE SOLENOID



3640

PART NUMBER	FUNCTION	BODY SIZE	EXHAUST INLET	PRICE
● EM-RV5212-06-WX	5/2	18 mm	1/8" 1/8"	£69.88
● EM-RV5222-08-WX	5/2	22 mm	1/8" 1/4"	£63.44
● EM-RV5242-15-WX	5/2	34 mm	1/2" 1/2"	£125.63

## STANDARD NAMUR SOLENOID VALVES

### FEATURES

- Life cycle of 12,000,000 operations
- 5/2-3/2 Interchangeable
- Manual override control
- Various voltages are available

### SPECIFICATIONS

Working pressure	1.5 – 8 bar
Working temperature	-20°C to +60°C



3640

### RV SERIES (5/2) (3/2) NAMUR VALVE SINGLE SOLENOID

PART NUMBER	VALVE BODY	PORT SIZE	VOLTAGE	PRICE
EM-V523231-08MRE4	3/8"	1/4"	24 V DC	£36.46
EM-V523231-08MRE1	3/8"	1/4"	110 V AC	£36.46
EM-V523231-08MRE2	3/8"	1/4"	220 V AC	£36.46



## RV SERIES ACCESSORIES



**RV SERIES COIL**  
FOR USE WITH 1/8" VALVES

3640

PART NUMBER	VOLTAGE	PRICE
EM-XHD-V1-E1	110 / 50 v AC & 22	£7.39
EM-XHD-V1-E2	220 / 50 v AC	£7.39
EM-XHD-V1-E4	24 v DC	£7.39
EM-XHD-V1-E5	12 v DC / 24 v AC	£7.39

FOR USE WITH 1/4" & 1/2" VALVES

EM-XHD-V2-E1	110 / 50 v AC	£7.08
EM-XHD-V2-E2	220 / 50 v AC	£7.08
EM-XHD-V2-E4	24 v DC	£7.08
EM-XHD-V2-E5	12 v DC / 24 v AC	£7.08



**RV SERIES PLUG CONNECTOR**  
FOR USE WITH 1/8" VALVES

3640

PART NUMBER	VOLTAGE	PRICE
EM-DB-A2ELR	110 / 50 v AC & 220 / 50 v AC	£2.97
EM-DB-A1ELR	24 v AC	£2.97
EM-DB-D1ELR	12 v DC / 24 v DC	£2.97

FOR USE WITH 1/4" & 1/2" VALVES

EM-DC-A2TEL	110 / 50 v AC & 220 / 50 v AC	£2.20
EM-DC-A1TEL	24 v AC	£2.20
EM-DC-D1TEL	12 v DC / 24 v DC	£2.20



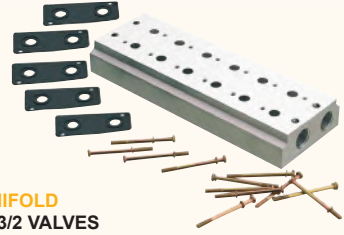
**BLANKING PLATES**  
3 WAY

3640

PART NUMBER	BODY SIZE	PORT SIZE	PRICE
EM-VBP321	18 mm	1/8"	£2.44
EM-VBP322	22 mm	1/4"	£2.44
EM-VBP324	34 mm	1/2"	£2.57

5 WAY

EM-VBP521	18 mm	1/8"	£2.44
EM-VBP522	22 mm	1/4"	£2.44
EM-VBP524	34 mm	1/2"	£2.75



**RV SERIES MANIFOLD**  
FOR USE WITH 3/2 VALVES

3640

PART NUMBER	NO. OF VALVES	BODY SIZE	PORT SIZE	PRICE
EM-V321-2F	2	18 mm	1/8"	£12.33
EM-V321-4F	4	18 mm	1/8"	£22.15
EM-V321-6F	6	18 mm	1/8"	£31.97
EM-V321-8F	8	18 mm	1/8"	£41.79
EM-V321-10F	10	18 mm	1/8"	£51.85
EM-V322-2F	2	22 mm	1/4"	£12.33
EM-V322-4F	4	22 mm	1/4"	£22.21
EM-V322-6F	6	22 mm	1/4"	£32.09
EM-V322-8F	8	22 mm	1/4"	£41.97
EM-V322-10F	10	22 mm	1/4"	£51.79
EM-V324-2F	2	34 mm	1/2"	£40.14
EM-V324-4F	4	34 mm	1/2"	£73.08
EM-V324-6F	6	34 mm	1/2"	£106.02
EM-V324-8F	8	34 mm	1/2"	£138.96
EM-V324-10F	10	34 mm	1/2"	£171.90

FOR USE WITH 5/2 & 5/3 VALVES

EM-V521-2F	2	18 mm	1/8"	£12.33
EM-V521-4F	4	18 mm	1/8"	£22.21
EM-V521-6F	6	18 mm	1/8"	£32.09
EM-V521-8F	8	18 mm	1/8"	£41.97
EM-V521-10F	10	18 mm	1/8"	£51.85
EM-V522-2F	2	22 mm	1/4"	£11.29
EM-V522-4F	4	22 mm	1/4"	£20.32
EM-V522-6F	6	22 mm	1/4"	£29.35
EM-V522-8F	8	22 mm	1/4"	£38.37
EM-V522-10F	10	22 mm	1/4"	£47.40
EM-V524-2F	2	34 mm	1/2"	£35.20
EM-V524-4F	4	34 mm	1/2"	£63.38
EM-V524-6F	6	34 mm	1/2"	£91.57
EM-V524-8F	8	34 mm	1/2"	£119.75
EM-V524-10F	10	34 mm	1/2"	£147.93

## VP SERIES SOLENOID VALVES



3640

**VP SERIES (3/2)**  
SINGLE SOLENOID - 24V DC

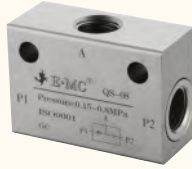
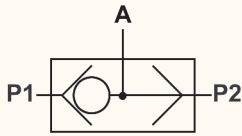
PART NUMBER	FUNCTION	VALVE BODY	PORT SIZE	PRICE
EM-VP321-06E4	3/2	1/8"	1/8"	£30.08

Symbol key  
fit together



### SPECIFICATIONS

Control type	Pneumatic
Working pressure	0.5 – 12 bar
Working temperature	-5°C to +60°C



3630

### SHUTTLE VALVE (OR GATE)

PART NUMBER	PORT SIZE	PRICE
EM-QS-06	1/8"	£17.88
EM-QS-08	1/4"	£17.88

### SPECIFICATIONS

Control type	External control
Working pressure	0.5 – 8 bar
Working temperature	0°C to +55°C



3630

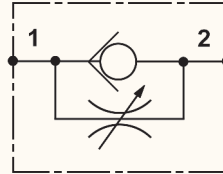
### IN-LINE NON-RETURN VALVE

PART NUMBER	PORT SIZE	PRICE
EM-EA-06	1/8"	£12.78
EM-EA-08	1/4"	£12.78
EM-EA-10	3/8"	£23.16
EM-EA-15	1/2"	£23.16

## FLOW REGULATORS

### SPECIFICATIONS

Working medium	Clean air
Working pressure	0.5 – 10 bar
Guaranteed pressure	15 bar
Working temperature	-20°C to +70°C



3630

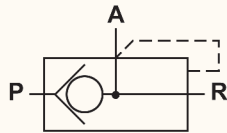
### FLOW REGULATOR UNI DIRECTIONAL

PART NUMBER	PORT SIZE	PRICE
EM-QSC-06	1/8"	£14.40
EM-QSC-08	1/4"	£18.30
EM-QSC-10	3/8"	£23.34
EM-QSC-15	1/2"	£23.34

## AUTOMATIC VALVES

### SPECIFICATIONS

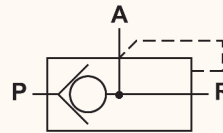
Working pressure	1.5 – 10 bar
Working temperature	-5°C to +60°C



3630

### QUICK EXHAUST VALVE

PART NUMBER	PORT SIZE	PRICE
EM-KKP-06	1/8"	£22.14
EM-KKP-08	1/4"	£23.28
EM-KKP-10	3/8"	£31.02
EM-KKP-15	1/2"	£38.46



3630

### QUICK EXHAUST VALVE

PART NUMBER	PORT SIZE	PRICE
EM-KKP-20	3/4"	£97.50
EM-KKP-25	1"	£97.50



## H SERIES – MANUAL

### SPECIFICATIONS

Working medium	Clean air
Working pressure	0 – 8 bar
Guaranteed pressure	12 bar
Working temperature	-5°C to +60°C
Valve type	3/2, 5/2 and 5/3
Seal material	NBR
Acting type	Manual

Six



**3/2 LEVER / SPRING  
SPRING RETURN**

3630

PART NUMBER	FUNCTION	PORT SIZE	PRICE
EM-H321-06S	3/2	1/8"	£38.93
EM-H322-08S	3/2	1/4"	£38.93
EM-H323-10S	3/2	3/8"	£46.33
EM-H324-15S	3/2	1/2"	£56.59



**5/3 LEVER / SPRING / LEVER  
SPRING TO CENTRE – CENTRES CLOSED**

3630

PART NUMBER	FUNCTION	EXHAUST	INLET	PRICE
EM-H531C-06S	5/3	1/8"	1/8"	£61.43
EM-H532C-08S	5/3	1/8"	1/4"	£61.43
EM-H533C-10S	5/3	1/4"	3/8"	£70.34
EM-H534C-15S	5/3	1/2"	1/2"	£84.37



**3/2 LEVER / LEVER  
DETENTED**

3630

PART NUMBER	FUNCTION	PORT SIZE	PRICE
EM-H321-06	3/2	1/8"	£29.94
EM-H322-08	3/2	1/4"	£29.94
EM-H323-10	3/2	3/8"	£35.64
EM-H324-15	3/2	1/2"	£43.50



**5/3 LEVER / SPRING / LEVER  
SPRING TO CENTRE – CENTRES EXHAUST**

3630

PART NUMBER	FUNCTION	EXHAUST	INLET	PRICE
EM-H531E-06S	5/3	1/8"	1/8"	£60.42
EM-H532E-08S	5/3	1/8"	1/4"	£60.42
EM-H533E-10S	5/3	1/4"	3/8"	£69.18
EM-H534E-15S	5/3	1/2"	1/2"	£82.98



**5/2 LEVER / SPRING  
SPRING RETURN**

3630

PART NUMBER	FUNCTION	EXHAUST	INLET	PRICE
EM-H521-06S	5/2	1/8"	1/8"	£34.44
EM-H522-08S	5/2	1/8"	1/4"	£34.44
EM-H523-10S	5/2	1/4"	3/8"	£50.40
EM-H524-15S	5/2	1/2"	1/2"	£57.60



**5/3 LEVER / SPRING / LEVER  
MANUAL – PRESSURED CENTRES**

3630

PART NUMBER	FUNCTION	EXHAUST	INLET	PRICE
EM-H531P-06S	5/3	1/8"	1/8"	£60.42
EM-H532P-08S	5/3	1/8"	1/4"	£60.42
EM-H533P-10S	5/3	1/4"	3/8"	£69.18
EM-H534P-15S	5/3	1/2"	1/2"	£82.98



**5/2 LEVER / LEVER  
DETENTED**

3630

PART NUMBER	FUNCTION	EXHAUST	INLET	PRICE
EM-H521-06	5/2	1/8"	1/8"	£29.94
EM-H522-08	5/2	1/8"	1/4"	£25.86
EM-H523-10	5/2	1/4"	3/8"	£29.52
EM-H524-15	5/2	1/2"	1/2"	£50.28



**5/3 LEVER / LEVER / LEVER  
DETENTED – CENTRES CLOSED**

3630

PART NUMBER	FUNCTION	EXHAUST	INLET	PRICE
EM-H531C-06	5/3	1/8"	1/8"	£46.50
EM-H532C-08	5/3	1/8"	1/4"	£46.50
EM-H533C-10	5/3	1/4"	3/8"	£53.22
EM-H534C-15	5/3	1/2"	1/2"	£63.84

## H SERIES – MECHANICAL

### SPECIFICATIONS

Working medium	Clean air
Working pressure	0 – 8 bar
Guaranteed pressure	12 bar
Working temperature	-5°C to +60°C
Valve type	5/3
Seal material	NBR
Acting type	External control



3630

### 5/3 LEVER / LEVER / LEVER MANUAL – CENTRES EXHAUST

PART NUMBER	FUNCTION	EXHAUST	INLET	PRICE
EM-H531E-06	5/3	1/8"	1/8"	£46.50
EM-H532E-08	5/3	1/8"	1/4"	£46.50
EM-H533E-10	5/3	1/4"	3/8"	£53.22
EM-H534E-15	5/3	1/2"	1/2"	£63.84



3630

### 5/3 LEVER / LEVER / LEVER MANUAL – PRESSURED CENTRES

PART NUMBER	FUNCTION	EXHAUST	INLET	PRICE
EM-H531P-06	5/3	1/8"	1/8"	£46.50
EM-H532P-08	5/3	1/8"	1/4"	£46.50
EM-H533P-10	5/3	1/4"	3/8"	£53.22
EM-H534P-15	5/3	1/2"	1/2"	£63.84



3630

### 4/3 ROTARY LEVER VALVE

PART NUMBER	FUNCTION	PORT SIZE	PRICE
EM-R432-08	4/3	1/4" BSPP	£28.92
EM-R432-10	4/3	3/8" BSPP	£28.92
EM-R432-15	4/3	1/2" BSPP	£28.92

### SPECIFICATIONS

Control type	Manual
Working pressure	0 – 8 bar
Working temperature	-5°C to +60°C



3630

### FOOT VALVE

PART NUMBER	FUNCTION	DESCRIPTION	PORT SIZE	PRICE
EM-F322-08	3/2	Foot valve no cover	1/4"	£34.67
EM-F422-08	4/2	Foot valve no cover	1/4"	£37.15
EM-F522C-08L	5/2	Foot pedal with lock and cover	1/4"	£65.50

## L SERIES – MANUAL

### SPECIFICATIONS

Working medium	Clean air
Working pressure	0 – 8 bar
Guaranteed pressure	12 bar
Working temperature	-5°C to +60°C
Valve type	3/2 and 5/2
Acting type	Manual



3630

### 3/2 & 5/2 BUTTON VALVE DETENTED

PART NUMBER	FUNCTION	PORT SIZE	PRICE
EM-L321-06	3/2	1/8"	£25.86
EM-L322-08	3/2	1/4"	£24.66
EM-L323-10	3/2	3/8"	£32.04
EM-L324-15	3/2	1/2"	£40.56
EM-L521-06	5/2	1/8"	£27.06
EM-L522-08	5/2	1/4"	£27.06
EM-L523-10	5/2	3/8"	£32.88
EM-L524-15	5/2	1/2"	£44.94

### SPECIFICATIONS

Working medium	Clean air
Working pressure	0-8 bar
Guaranteed pressure	12 bar
Working temperature	-5°C to +60°C
Valve type	3/2 and 5/2
Acting type	External control



3630

### 3/2 & 5/2 HAND PULL VALVE BUTTON SPRING

PART NUMBER	FUNCTION	PORT SIZE	PRICE
EM-L321-06S	3/2	1/8"	£33.60
EM-L322-08S	3/2	1/4"	£32.04
EM-L323-10S	3/2	3/8"	£41.64
EM-L324-15S	3/2	1/2"	£52.74
EM-L521-06S	5/2	1/8"	£35.16
EM-L522-08S	5/2	1/4"	£35.16
EM-L523-10S	5/2	3/8"	£42.72
EM-L524-15S	5/2	1/2"	£58.44

### SPECIFICATION

Working pressure	0 – 8 bar
Guaranteed pressure	12 bar
Working temperature	-5°C to +60°C
Valve type	MV series: 3/2 M series: 5/2
Acting type	External control
Panel cut out size	Ø 22.5 mm

Alternative button colours available upon request. Lead times to be advised.



3630

### PUSH BUTTON SPRING RETURN VALVE FLAT BUTTON

PART NUMBER	FUNCTION	PORT SIZE	PRICE
EM-MV32-06S5R	3/2	1/8"	£16.62
EM-M32-08S5R	3/2	1/4"	£23.10
EM-M52-08S5R	5/2	1/4"	£25.85



3630

### 3/2 ROLLER LEVER VALVE

PART NUMBER	FUNCTION	PORT SIZE	PRICE
EM-MV32-06S2	3/2	1/8"	£16.62
EM-MJ32-08S2	3/2	1/4"	£23.10
EM-M52-08S2	5/2	1/4"	£25.85



3630

### PUSH BUTTON SPRING RETURN VALVE RAISED BUTTON

PART NUMBER	FUNCTION	PORT SIZE	PRICE
EM-MV32-06S4G	3/2	1/8"	£16.62
EM-M32-08S4G	3/2	1/4"	£23.10
EM-M52-08S4G	5/2	1/4"	£25.85



3630

### TWO POSITION SELECTOR SWITCH VALVE WITH INDICATING ARROW

PART NUMBER	FUNCTION	PORT SIZE	PRICE
EM-MV32-06S1	3/2	1/8"	£16.62
EM-M32-08S1	3/2	1/4"	£23.10
EM-M52-08S1B	5/2	1/4"	£25.85



3630

### PALM BUTTON SPRING RETURN VALVE

PART NUMBER	FUNCTION	PORT SIZE	PRICE
EM-MV32-06S6R	3/2	1/8"	£16.62
EM-M32-08S6R	3/2	1/4"	£23.10
EM-M52-08S6R	5/2	1/4"	£25.85



3630

### BASIC (NO BUTTON) VALVES SPRING RETURN

PART NUMBER	FUNCTION	PORT SIZE	PRICE
EM-MV322-06S7	3/2	1/8"	£16.62
EM-M32-08S7	3/2	1/4"	£21.24
EM-M52-08S7	5/2	1/4"	£24.00



3630

### TWIST LOCK PALM SWITCH VALVE

PART NUMBER	FUNCTION	PORT SIZE	PRICE
EM-MV32-06S3R	3/2	1/8"	£16.62
EM-M32-08S3R	3/2	1/4"	£23.10
EM-M52-08S3R	5/2	1/4"	£25.85

MANUAL AND MECHANICAL VALVE WITH MANUAL OPERATING HEADS



3630

PUSH BUTTON SHROUDED  
S5 VALVE HEAD

PART NUMBER	TO SUIT	PRICE
EM-M32-06S5R-P01	M32, M52 & MV34 valves	£7.74



3630

PALM TWIST UNLOCK  
S3 VALVE HEAD

PART NUMBER	TO SUIT	PRICE
EM-M32-06S3R-P01	M32, M52 & MV32 valves	£7.74



3630

PUSH BUTTON RAISED  
S4 VALVE HEAD

PART NUMBER	TO SUIT	PRICE
EM-M32-06S4G-P01	M32, M52 & MV33 valves	£7.74



3630

TWO POSITION SELECTOR  
S1 BLACK VALVE HEAD

PART NUMBER	TO SUIT	PRICE
EM-M32-06S1B-P01	M32, M52 & MV32 valves	£6.84



3630

PALM SPRING RETURN  
S6 VALVE HEAD

PART NUMBER	TO SUIT	PRICE
EM-M32-06S6R-P01	M32, M52 & MV35 valves	£7.74

For CDC  
Polyurethane  
Tubing, see pages  
511-512.

For Breathing Air  
Couplings, see  
page 21.