

FASTEST QUICK CONNECTORS: LEAK & PRESSURE TESTING



1079

EZ Connect ZN Series



1080

EZ Connect ZF Series



1082

FE Series External Connectors



1083

FI Series Internal Connectors

FASTEST QUICK CONNECTORS: LEAK & PRESSURE TESTING



1085

JNL / JXL Series



1086

FasMate FX / FN Series



1088

TwistMate MET / MIT Series



MANUFACTURING

Industry leading quick connectors for leak and pressure testing during the manufacturing process.

HVAC-R

High flow OEM refrigerant valves for HVAC-R manufacturers and connectors for testing applications with refrigerant tubing and process tips.

COMPRESSED GAS

High speed CGA standard connectors for filling of medical and industrial oxygen, propane and other compressed gas cylinders.

CALIBRATION

Calibrate faster with connectors for gauges, transmitters, control valve actuators, transducers, instrumentation, compression fittings, flanges, conduit and piping.

MEDICAL

Automated pneumatic and manual quick connectors for volume testing of luers, tubing, syringes, catheters and other medical device components.

AUTOMOTIVE

Leak and pressure testing quick connectors for engines and automotive components.

FLUID POWER

Precision quick connectors for leak testing of critical fluid power components or transferring of fluids into/out of a system.

AEROSPACE

Industry leading precision quick connectors for leak testing of a wide range of aerospace components.

APPLIANCES

Quick connectors for leak testing compressors, water systems, coils, heat exchangers and other appliance components.

DESCRIPTION

FasTest's EZ Series seal adjustable connectors provide fast, leak tight connections for pressure and vacuum testing, fluid filling and flushing applications from vacuum to 50 psi (3.44 bar). The industry best EZ Series seal connectors deliver fast, efficient seals by moving the bi-directional handle in either direction.

FEATURES

- Simple adjustment – twist to adjust collar is easily sized for various seal diameters
- Quick change seal sets to accommodate multiple size tubing and port applications
- Simple design and 5 TIME field service maintenance kits require no special tools for easy seal replacement
- High flow design can be quickly adapted for plug style applications

APPLICATIONS

- Radiators, hoses, reservoirs, plastic moulded components
- Plumbing fixtures, fuel tanks, pumps, filters, castings, fabricated housings
- Hydronic heating, engines, axles, transmissions, small appliances
- Pumps, tubing and assemblies

SPECIFICATIONS

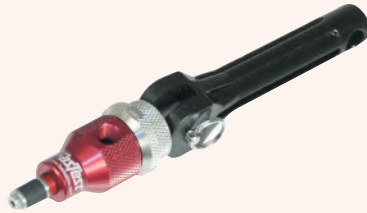
| | |
|-------------------|--|
| Connection type | Internal tubes / bores |
| Connection method | Lever actuated |
| Pressure rating | 50 psi (3.4 bar) |
| Test pressure | Vacuum to 50 psi / 3.44 bar (clean and dry surface pneumatic applications) |

MATERIALS

| | |
|-------------------|---|
| Housing materials | Aluminium, stainless steel and moulded nylon handle |
| Seals | Neoprene (main), Buna-N (internal) |



INTERNAL MANUAL TUBE CONNECTOR



LEVER ACTUATED WITH NEOPRENE MAIN SEALS

6410

| PART NUMBER | SEALING RANGE | TERMINATION | BODY SIZE | PRICE |
|-------------|-----------------|-------------|-----------|---------|
| FASZN101 | 0.375" – 0.394" | 1/8" NPT | 1 | £191.27 |
| FASZN111 | 0.394" – 0.472" | 1/8" NPT | 1 | £191.27 |
| FASZN112 | 0.472" – 0.551" | 1/8" NPT | 1 | £191.27 |
| FASZN113 | 0.551" – 0.630" | 1/8" NPT | 1 | £191.27 |
| FASZN221 | 0.630" – 0.709" | 1/4" NPT | 2 | £201.08 |
| FASZN222 | 0.709" – 0.787" | 1/4" NPT | 2 | £201.08 |
| FASZN223 | 0.787" – 0.866" | 1/4" NPT | 2 | £201.08 |
| FASZN331 | 0.866" – 0.945" | 1/4" NPT | 3 | £242.76 |
| FASZN332 | 0.945" – 1.024" | 1/4" NPT | 3 | £242.76 |
| FASZN333 | 1.024" – 1.102" | 1/4" NPT | 3 | £242.76 |
| FASZN441 | 1.102" – 1.181" | 3/8" NPT | 4 | £290.58 |
| FASZN442 | 1.181" – 1.260" | 3/8" NPT | 4 | £290.58 |
| FASZN443 | 1.260" – 1.339" | 3/8" NPT | 4 | £290.58 |

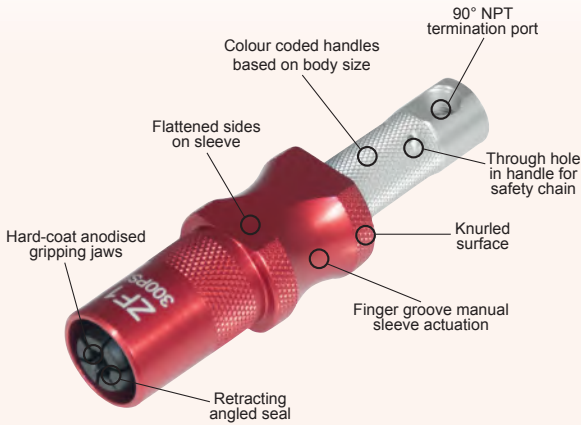
MAINTENANCE KIT



ZN SERIES MAINTENANCE KIT 5 COMPLETE REFURBISHMENTS

6410

| PART NUMBER | FOR USE WITH | PRICE |
|--------------|--------------|---------|
| FASZNB1-0360 | FASZN101 | £141.39 |
| FASZNB111 | FASZN111 | £80.92 |
| FASZNB112 | FASZN112 | £80.92 |
| FASZNB113 | FASZN113 | £80.92 |
| FASZNB221 | FASZN221 | £80.92 |
| FASZNB222 | FASZN222 | £80.92 |
| FASZNB223 | FASZN223 | £80.92 |
| FASZNB331 | FASZN331 | £101.76 |
| FASZNB332 | FASZN332 | £101.76 |
| FASZNB333 | FASZN333 | £101.76 |
| FASZNB441 | FASZN441 | £104.22 |
| FASZNB442 | FASZN442 | £104.22 |
| FASZNB443 | FASZN443 | £104.22 |

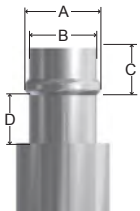


SPECIFICATIONS

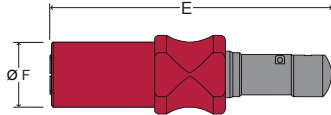
| | |
|--------------------------|--|
| Operating pressure | Vacuum to 21 bar / 300 psi (ZF1-ZF4) 17 bar / 250 psi (ZF5) |
| Connection profile | External formed tubes (SAE J1231) |
| Termination profile | 1/8" to 3/8" NPT |
| Operating temperature | -17°C to +93°C (0°F to 200°F) |
| Min / max bead depth (C) | 0.13" / 0.32" (3.3 mm / 8.1 mm) |
| Minimum clearance (D) | 0.31" (7.9 mm) |

MATERIALS

| | |
|------------------------------|-----------------------|
| Housing, sleeve & components | Anodised aluminium |
| Main seal | 70 durometer neoprene |



EZ Connect ZF incorporates a manual sleeve actuation to create a leak-tight external connection to a wide variety of formed tube styles. The ZF connectors are ideal for a diverse range of manufacturing testing systems.



| CONNECTOR | (E) | (Ø F) |
|-----------|----------------|-----------------|
| ZF1 | 4.60" (116 mm) | 0.98" (24.8 mm) |
| ZF2 | 4.90" (124 mm) | 1.14" (28.9 mm) |
| ZF3 | 4.96" (126 mm) | 1.23" (31.2 mm) |
| ZF4 | 5.18" (131 mm) | 1.38" (35.0 mm) |
| ZF5 | 5.25" (133 mm) | 1.55" (39.4 mm) |

| BODY SIZE | Ø BEAD DIA. RANGE (A) | TUBE DIA. RANGE (B) | SAE J1231 | RATED PSI | TERMINATION PORT (90°) | Ø FLOW DIA. | MAIN SEAL PACK | REPAIR KIT |
|-----------|---------------------------------------|------------------------------------|-----------|-----------|------------------------|-------------------|----------------|------------|
| ZF1 | Ø 0.310" – 0.400" 7.87mm – 10.16mm | Ø 0.25" – 0.34" 6.54mm – 8.74mm | -5 | 300 | 1/8" NPT | Ø 0.17" 4.3 mm | S-ZF1 | R-ZF1 |
| ZF2 | Ø 0.400" – 0.490" 10.2mm – 12.4mm | Ø 0.34" – 0.44" 8.7mm – 11.0mm | -6 | 300 | 1/8" NPT | Ø 0.19" 4.8 mm | S-ZF2 | R-ZF2 |
| ZF3 | Ø 0.490" – 0.580" 12.4mm – 14.7mm | Ø 0.44" – 0.52" 11.0mm – 13.2mm | -7 & -8 | 300 | 1/4" NPT | Ø 0.21" 5.3 mm | S-ZF3 | R-ZF3 |
| ZF4 | Ø 0.580" – 0.670" 14.7mm – 17.0mm | Ø 0.52" – 0.61" 13.2mm – 15.5mm | -9 | 300 | 1/4" NPT | Ø 0.32" 8.1 mm | S-ZF4 | R-ZF4 |
| ZF5 | Ø 0.670" – 0.760" 17.0mm – 19.3mm | Ø 0.61" – 0.70" 15.5mm – 17.8mm | -10 | 250 | 3/8" NPT | Ø 0.38" 9.6 mm | S-ZF5 | R-ZF5 |

Colour coded handles simplifying operator selection when multiple SAE tube sizes are present

DESCRIPTION

FasTest's EZ Connect ZF connectors provide fast, leak tight connections for pressure and vacuum testing, fluid filling and flushing applications from vacuum to 300 psi (20.68 bar). EZ Connect ZF is the newest quick connector in the EZ Connect Series and is designed to provide instant connections to a wide range of formed tube configurations for in-process testing.

FEATURES

- Wide tolerance seal design provides fit to a range of tube diameters
- Lightweight aluminium body puts less strain on operator
- Finger grooves create an intuitive one-hand operation
- Self-aligning connector reduces connection failures
- Colour coded handles help operator identify correct connector
- Connectors fit in tight placements, providing improved fixture possibilities

APPLICATIONS

- Engines and manifolds
- Radiators and reservoirs
- Castings
- Small appliances
- Lawn and garden products
- Plastic barbed tubes

SPECIFICATIONS

| | |
|-------------------|---|
| Connection type | External tubes |
| Connection method | Sleeve actuated |
| Pressure ratings | F1-4: 300 psi (20.6 bar), F5: 250 psi (17.23 bar) |
| MATERIALS | |
| Seals | Neoprene |

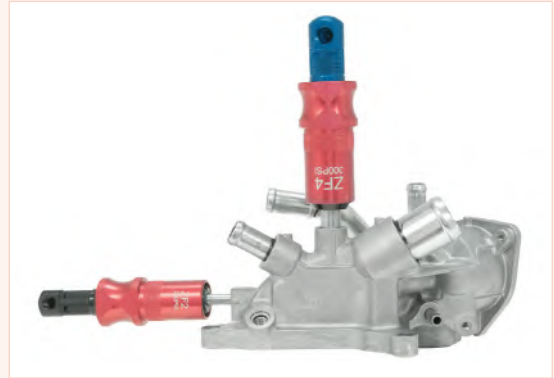
EXTERNAL MANUAL TUBE CONNECTORS

SLEEVE ACTUATED RED / SILVER



6410

| PART NUMBER | SEALING RANGE | TERMINATION | BODY SIZE | PRICE |
|-------------|-----------------|-------------|-----------|---------|
| FASZF1 | 0.254" – 0.344" | 1/8" NPT | ZF1 | £795.72 |



SLEEVE ACTUATED RED / BLACK



6410

| PART NUMBER | SEALING RANGE | TERMINATION | BODY SIZE | PRICE |
|-------------|-----------------|-------------|-----------|---------|
| FASZF2 | 0.344" – 0.434" | 1/8" NPT | ZF2 | £814.12 |

SLEEVE ACTUATED RED / BLUE



6410

| PART NUMBER | SEALING RANGE | TERMINATION | BODY SIZE | PRICE |
|-------------|-----------------|-------------|-----------|---------|
| FASZF4 | 0.520" – 0.610" | 1/4" NPT | ZF4 | £918.33 |

SLEEVE ACTUATED RED / GOLD



6410

| PART NUMBER | SEALING RANGE | TERMINATION | BODY SIZE | PRICE |
|-------------|-----------------|-------------|-----------|---------|
| FASZF3 | 0.434" – 0.520" | 1/4" NPT | ZF3 | £857.03 |

SLEEVE ACTUATED RED / GREEN



6410

| PART NUMBER | SEALING RANGE | TERMINATION | BODY SIZE | PRICE |
|-------------|---------------|-------------|-----------|----------|
| FASZF5 | 0.61" – 0.70" | 3/8" NPT | ZF5 | £1028.68 |

REPLACEMENT SEAL SET



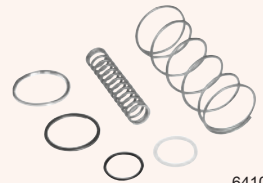
SEAL SET 5 SEALS

6410

| PART NUMBER | FOR USE WITH | PRICE |
|-------------|--------------|--------|
| FASSZF1 | FASZF1 | £88.28 |
| FASSZF2 | FASZF2 | £88.28 |
| FASSZF3 | FASZF3 | £88.28 |
| FASSZF4 | FASZF4 | £88.28 |
| FASSZF5 | FASZF5 | £88.28 |

PUR seals available on request

REPAIR KIT



6410

| PART NUMBER | FOR USE WITH | PRICE |
|-------------|--------------|--------|
| FASRZF1 | FASZF1 | £45.36 |
| FASRZF2 | FASZF2 | £45.36 |
| FASRZF3 | FASZF3 | £45.36 |
| FASRZF4 | FASZF4 | £45.36 |
| FASRZF5 | FASZF5 | £45.36 |

DESCRIPTION

FasTest External (FE) connectors deliver fast, leak free connections for vacuum and pressure testing, fluid filling or flushing applications. The FE quick connectors seal externally to a wide variety of smooth or threaded tubes, and the uniform seal movement makes a leak tight, quick connection, even over threaded, rough and oily surfaces. The connectors are ideal for automated processes and high volume production testing. Compressed air activates the seals for a full flow test with air, gas or liquid. Ideally suited to pick and place parts handling applications.

SPECIFICATION

| | |
|-------------------|-------------------------|
| Connection type | External tubes |
| Connection method | Automated pneumatic |
| Pressure rating | 500 psi (34.4 bar) |
| Test pressure | Vacuum to 500 psi |
| Pilot operation | 60 to 90 psi air supply |

MATERIALS

| | |
|-------------------|-------------------------------|
| Housing materials | Aluminium and stainless steel |
| Seal material | Neoprene |

EXTERNAL TUBE & THREAD



6410

BASE CONNECTOR WITHOUT SEALS

| PART NUMBER | SEALING RANGE | TERMINATION | BODY SIZE | PRICE |
|-------------|-----------------|-------------|-----------|----------|
| FASFEM001 | 0.050" – 0.080" | 1/8" BSPP | 001 | POA |
| FASFEM01 | 0.100" – 0.510" | 1/8" BSPP | 01 | £399.70 |
| FASFEM1 | 0.433" – 0.827" | 1/4" BSPP | 1 | £523.53 |
| FASFEM2 | 0.787" – 1.510" | 1/2" BSPP | 2 | £637.56 |
| FASFEM3 | 1.496" – 1.969" | 1" BSPP | 3 | £1048.30 |
| FASFEM4 | 1.969" – 3.032" | 1 1/8" BSPP | 4 | £1309.07 |

REPAIR KIT



6410

INTERNAL REPAIR KIT WITH NEOPRENE PISTON O-RINGS

| PART NUMBER | FOR USE WITH | PRICE |
|-------------|--------------|--------|
| FASFER001 | FASFEM001 | £14.71 |
| FASFER01 | FASFEM01 | £17.17 |
| FASFER1 | FASFEM1 | £17.17 |
| FASFER2 | FASFEM2 | £18.39 |
| FASFER3 | FASFEM3 | £33.10 |
| FASFER4 | FASFEM4 | £36.78 |

SEAL SETS



6410

SEAL SET ONE COMPLETE SEAL CHANGE

| PART NUMBER | FOR USE WITH | SEALING RANGE | PRICE |
|---------------|--------------|-----------------|---------|
| FASFES0010050 | FASFEM001 | 0.030" – 0.050" | £164.80 |
| FASFES001001 | FASFEM001 | 0.050" – 0.080" | £100.54 |
| FASFES001002 | FASFEM001 | 0.080" – 0.130" | £100.54 |
| FASFES0101 | FASFEM01 | 0.100" – 0.180" | £44.14 |
| FASFES0102 | FASFEM01 | 0.180" – 0.260" | £44.14 |
| FASFES0103 | FASFEM01 | 0.260" – 0.340" | £44.14 |
| FASFES0104 | FASFEM01 | 0.340" – 0.420" | £44.14 |
| FASFES0105 | FASFEM01 | 0.420" – 0.510" | £44.14 |
| FASFES115 | FASFEM1 | 0.433" – 0.512" | £50.27 |
| FASFES116 | FASFEM1 | 0.512" – 0.591" | £50.27 |
| FASFES117 | FASFEM1 | 0.591" – 0.669" | £50.27 |
| FASFES118 | FASFEM1 | 0.669" – 0.750" | £50.27 |
| FASFES119 | FASFEM1 | 0.750" – 0.827" | £50.27 |
| FASFES221 | FASFEM2 | 0.787" – 0.866" | £82.15 |
| FASFES222 | FASFEM2 | 0.866" – 0.945" | £82.15 |
| FASFES223 | FASFEM2 | 0.945" – 1.024" | £82.15 |
| FASFES224 | FASFEM2 | 1.024" – 1.102" | £82.15 |
| FASFES225 | FASFEM2 | 1.102" – 1.181" | £82.15 |
| FASFES226 | FASFEM2 | 1.181" – 1.260" | £82.15 |
| FASFES227 | FASFEM2 | 1.260" – 1.339" | £82.15 |
| FASFES228 | FASFEM2 | 1.339" – 1.417" | £82.15 |
| FASFES229 | FASFEM2 | 1.417" – 1.510" | £82.15 |
| FASFES331 | FASFEM3 | 1.496" – 1.614" | £155.71 |
| FASFES332 | FASFEM3 | 1.614" – 1.732" | £159.39 |
| FASFES333 | FASFEM3 | 1.732" – 1.850" | £159.39 |
| FASFES334 | FASFEM3 | 1.850" – 1.969" | £155.71 |
| FASFES441 | FASFEM4 | 1.969" – 2.087" | £187.59 |
| FASFES442 | FASFEM4 | 2.087" – 2.205" | £187.59 |
| FASFES443 | FASFEM4 | 2.205" – 2.323" | £187.59 |
| FASFES444 | FASFEM4 | 2.323" – 2.441" | £186.36 |
| FASFES445 | FASFEM4 | 2.441" – 2.559" | £186.36 |
| FASFES446 | FASFEM4 | 2.559" – 2.677" | £186.36 |
| FASFES447 | FASFEM4 | 2.677" – 2.795" | £186.36 |
| FASFES448 | FASFEM4 | 2.795" – 2.913" | £186.36 |
| FASFES449 | FASFEM4 | 2.913" – 3.032" | £186.36 |



6410

BULK SEAL SET 5 REPLACEMENT SEALS

| PART NUMBER | FOR USE WITH | SEALING RANGE | PRICE |
|---------------|--------------|-----------------|---------|
| FASFEB0010050 | FASFEM001 | 0.030" – 0.050" | £35.56 |
| FASFEB001001 | FASFEM001 | 0.050" – 0.080" | £35.56 |
| FASFEB001002 | FASFEM001 | 0.080" – 0.130" | £35.56 |
| FASFEB0101 | FASFEM01 | 0.100" – 0.180" | £61.30 |
| FASFEB0102 | FASFEM01 | 0.180" – 0.260" | £61.30 |
| FASFEB0103 | FASFEM01 | 0.260" – 0.340" | £61.30 |
| FASFEB0104 | FASFEM01 | 0.340" – 0.420" | £61.30 |
| FASFEB0105 | FASFEM01 | 0.420" – 0.510" | £61.30 |
| FASFEB115 | FASFEM1 | 0.433" – 0.512" | £63.76 |
| FASFEB116 | FASFEM1 | 0.512" – 0.591" | £63.76 |
| FASFEB117 | FASFEM1 | 0.591" – 0.669" | £63.76 |
| FASFEB118 | FASFEM1 | 0.669" – 0.750" | £63.76 |
| FASFEB119 | FASFEM1 | 0.750" – 0.827" | £63.76 |
| FASFEB221 | FASFEM2 | 0.787" – 0.866" | £198.62 |
| FASFEB222 | FASFEM2 | 0.866" – 0.945" | £198.62 |
| FASFEB223 | FASFEM2 | 0.945" – 1.024" | £198.62 |
| FASFEB224 | FASFEM2 | 1.024" – 1.102" | £198.62 |
| FASFEB225 | FASFEM2 | 1.102" – 1.181" | £198.62 |
| FASFEB226 | FASFEM2 | 1.181" – 1.260" | £198.62 |
| FASFEB227 | FASFEM2 | 1.260" – 1.339" | £198.62 |
| FASFEB228 | FASFEM2 | 1.339" – 1.417" | £198.62 |
| FASFEB229 | FASFEM2 | 1.417" – 1.510" | £198.62 |
| FASFEB331 | FASFEM3 | 1.496" – 1.614" | £405.83 |
| FASFEB332 | FASFEM3 | 1.614" – 1.732" | £405.83 |
| FASFEB333 | FASFEM3 | 1.732" – 1.850" | £405.83 |
| FASFEB334 | FASFEM3 | 1.850" – 1.969" | £405.83 |
| FASFEB441 | FASFEM4 | 1.969" – 2.087" | £548.06 |
| FASFEB442 | FASFEM4 | 2.087" – 2.205" | £548.06 |
| FASFEB443 | FASFEM4 | 2.205" – 2.323" | £548.06 |
| FASFEB444 | FASFEM4 | 2.323" – 2.441" | £548.06 |
| FASFEB445 | FASFEM4 | 2.441" – 2.559" | £548.06 |
| FASFEB446 | FASFEM4 | 2.559" – 2.677" | £548.06 |
| FASFEB447 | FASFEM4 | 2.677" – 2.795" | £548.06 |
| FASFEB448 | FASFEM4 | 2.795" – 2.913" | £548.06 |
| FASFEB449 | FASFEM4 | 2.913" – 3.032" | £548.06 |

PUR seals available on request

PUR seals available on request

DESCRIPTION

FasTest Internal FIM (metric) connectors provide fast, leak free connections for vacuum and pressure testing, fluid filling or flushing applications. The FI quick connectors seal internally to a wide variety of smooth or threaded tubes and the uniform seal movement makes a leak tight connection, even into threaded, rough and oily surfaces. The connectors are activated by compressed regulated air acting on a piston, which expands an elastomeric seal to form a leak free connection. Testing, filling or flushing of the piece is accomplished by introducing air, liquid or gas media through the connector. Ideal for automated processes and high volume production testing, the FI Series connectors are suited to pick and place parts handling applications.

FEATURES

- Pneumatic operation seals inside tubes and pipes
- Designed for production testing applications
- Pick and place parts handling
- Stroke limiter regulates seal expansion

SPECIFICATION

| | |
|-------------------|-------------------------|
| Connection method | Automated pneumatic |
| Connection type | Internal tubes / bores |
| Pressure rating | 120 psi (8.2 bar) |
| Test pressure | Vacuum to 120 psi |
| Pilot operation | 60 to 90 psi air supply |

MATERIALS

| | |
|-------------------|-------------------------------|
| Housing materials | Aluminium and stainless steel |
| Seal material | Neoprene |

INTERNAL TUBE & THREAD CONNECTOR



6410

BASE CONNECTORS WITHOUT SEALS

| PART NUMBER | SEALING SIZE | TERMINATION | BODY SIZE | PRICE |
|-------------|-----------------|-------------|-----------|---------|
| FASFIM01 | 0.310" – 0.394" | M5 x 0.8 | 01 | £378.86 |
| FASFIM1 | 0.394" – 0.630" | 1/8" BSPP | 1 | £513.73 |
| FASFIM2 | 0.630" – 0.866" | 1/8" BSPP | 2 | £538.25 |
| FASFIM3 | 0.866" – 1.102" | 1/8" BSPP | 3 | £562.77 |
| FASFIM4 | 1.102" – 1.339" | 1/8" BSPP | 4 | £581.16 |
| FASFIM5 | 1.339" – 1.693" | 1/2" BSPP | 5 | £660.86 |
| FASFIM6 | 1.693" – 2.165" | 1/2" BSPP | 6 | £685.38 |

REPAIR KIT



6410

REPAIR KIT WITH SHAFTS AND NEOPRENE O-RINGS

| PART NUMBER | FOR USE WITH | PRICE |
|-------------|------------------|--------|
| FASFIR01 | FASFIM01 | £18.39 |
| FASFIR1 | FASFIM1, FASFIM2 | £18.39 |
| FASFIR3 | FASFIM3, FASFIM4 | £19.62 |
| FASFIR6 | FASFIM5, FASFIM6 | £20.84 |
| FASFIR7 | FASFIM7, FASFIM8 | £22.07 |

SEAL SETS



6410

SEAL SET ONE COMPLETE SEAL CHANGE

| PART NUMBER | FOR USE WITH | SEALING RANGE | PRICE |
|-------------|--------------|-----------------|---------|
| FASFIS10300 | FASFIM01 | 0.310" – 0.330" | £69.89 |
| FASFIS0101 | FASFIM01 | 0.330" – 0.394" | £36.78 |
| FASFIS111 | FASFIM1 | 0.394" – 0.472" | £44.14 |
| FASFIS112 | FASFIM1 | 0.472" – 0.551" | £44.14 |
| FASFIS113 | FASFIM1 | 0.551" – 0.630" | £44.14 |
| FASFIS221 | FASFIM2 | 0.630" – 0.709" | £44.14 |
| FASFIS222 | FASFIM2 | 0.709" – 0.787" | £44.14 |
| FASFIS223 | FASFIM2 | 0.787" – 0.866" | £44.14 |
| FASFIS331 | FASFIM3 | 0.866" – 0.945" | £55.17 |
| FASFIS332 | FASFIM3 | 0.945" – 1.024" | £55.17 |
| FASFIS333 | FASFIM3 | 1.024" – 1.102" | £55.17 |
| FASFIS441 | FASFIM4 | 1.102" – 1.181" | £55.17 |
| FASFIS442 | FASFIM4 | 1.181" – 1.260" | £55.17 |
| FASFIS443 | FASFIM4 | 1.260" – 1.339" | £55.17 |
| FASFIS551 | FASFIM5 | 1.339" – 1.457" | £110.35 |
| FASFIS552 | FASFIM5 | 1.457" – 1.575" | £110.35 |
| FASFIS553 | FASFIM5 | 1.575" – 1.693" | £110.35 |
| FASFIS661 | FASFIM6 | 1.693" – 1.850" | £122.61 |
| FASFIS662 | FASFIM6 | 1.850" – 2.008" | £122.61 |
| FASFIS663 | FASFIM6 | 2.008" – 2.165" | £122.61 |

PUR seals available on request



6410

BULK SEAL SET 5 REPLACEMENT SEALS

| PART NUMBER | FOR USE WITH | SEALING RANGE | PRICE |
|-------------|--------------|-----------------|---------|
| FASFIB10300 | FASFIM0101 | 0.310" - 0.330" | £121.38 |
| FASFIB0101 | FASFIM0101 | 0.330" - 0.394" | £69.89 |
| FASFIB111 | FASFIM111 | 0.394" - 0.472" | £71.11 |
| FASFIB112 | FASFIM112 | 0.472" - 0.551" | £71.11 |
| FASFIB113 | FASFIM113 | 0.551" - 0.630" | £71.11 |
| FASFIB221 | FASFIM221 | 0.630" - 0.709" | £72.34 |
| FASFIB222 | FASFIM222 | 0.709" - 0.787" | £72.34 |
| FASFIB223 | FASFIM223 | 0.787" - 0.866" | £72.34 |
| FASFIB331 | FASFIM331 | 0.866" - 0.945" | £109.12 |
| FASFIB332 | FASFIM332 | 0.945" - 1.024" | £109.12 |
| FASFIB333 | FASFIM333 | 1.024" - 1.102" | £109.12 |
| FASFIB441 | FASFIM441 | 1.102" - 1.181" | £109.12 |
| FASFIB442 | FASFIM442 | 1.181" - 1.260" | £109.12 |
| FASFIB443 | FASFIM443 | 1.260" - 1.339" | £109.14 |
| FASFIB551 | FASFIM551 | 1.339" - 1.457" | £286.90 |
| FASFIB552 | FASFIM552 | 1.457" - 1.575" | £286.90 |
| FASFIB553 | FASFIM553 | 1.575" - 1.693" | £286.90 |
| FASFIB661 | FASFIM661 | 1.693" - 1.850" | £286.90 |
| FASFIB662 | FASFIM662 | 1.850" - 2.008" | £286.90 |
| FASFIB663 | FASFIM663 | 2.008" - 2.165" | £286.90 |

PUR seals available on request

DESCRIPTION
ICON™ INTELLIGENT CONNECTION TECHNOLOGY

FasTest's ICON™ adds sensing capabilities to our mechanical sealing connection tools. ICON™ Tools include instant LED visual feedback and data output to improve sealing connection accuracy, maximise production efficiency, and optimise maintenance.

FE AND FI SERIES ICON™ CONNECTORS
ICON™ features:

SURE SEAL™

Instant LED feedback verifies a good connection prior to starting a test.

SEAL LIFE™

Alert when the main seal is at end of life and must be replaced.

System Overview:
CONNECTED

Green indication of a good connection.

RECONNECT

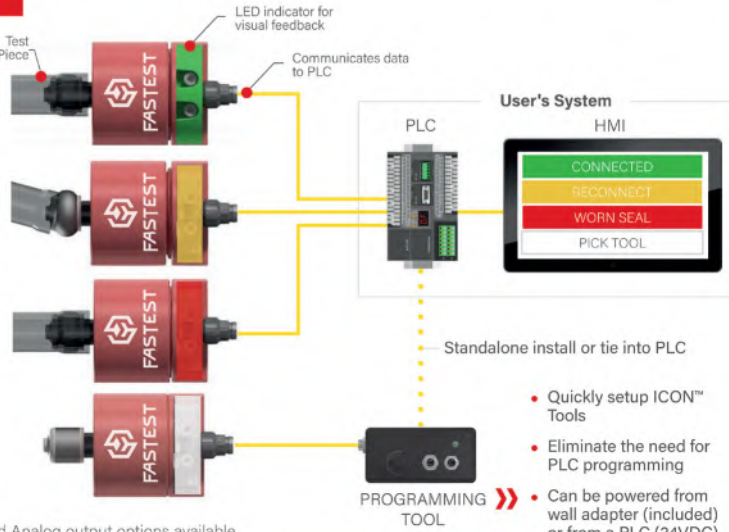
Recognize a connection issue before causing a false failure.

WORN SEAL

Alert when main seals should be replaced.

PICK TOOL

Controllable LED signals operator to use specific tool.



NOTE: Solid State Relay and Analog output options available.

- Quickly setup ICON™ Tools
- Eliminate the need for PLC programming
- Can be powered from wall adapter (included) or from a PLC (24VDC)

FASMATE FX / FN SERIES ICON™ CONNECTORS
ICON™ features:

SURE SEAL™

Instant LED feedback verifies a good connection prior to starting a test.

System Overview:
CONNECTED

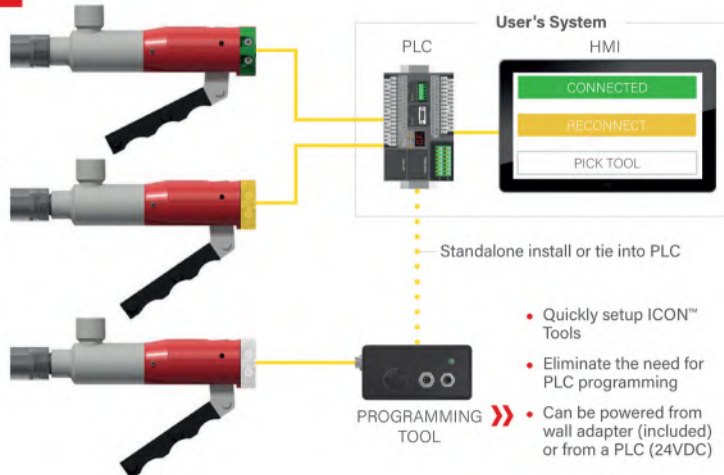
Verify connections are good prior to starting a leak test and provide operators instant positive feedback to simplify training.

RECONNECT

Recognize short connects before hazardous spills occur in functional testing, or prevent wasteful False Positive results in leak testing.

PICK TOOL

Controllable LED signals operator to use specific tool.



- Quickly setup ICON™ Tools
- Eliminate the need for PLC programming
- Can be powered from wall adapter (included) or from a PLC (24VDC)

JNL SERIES
DESCRIPTION

The JNL Series is ideal for internal connections to copper, steel and aluminium tubes used with manufacturing and refrigerant based products, such as heat exchangers, pressure vessels, gauges, valves, and HVAC-R systems. The unique collet gripping and sealing design seals reliably and resists removal under pressure. The single seal design can be quickly changed to minimise downtime, maintenance and tool inventory.

FEATURES

- Instant connections from vacuum (10 micron) to 1000 psi
- Seals straight bore, step bore, smooth or cast surfaces
- Safety design feature prevents accidental disconnect under pressure
- Collet design provides maximum grip with minimum distortion of test piece
- Neoprene seals are standard for refrigerant based applications, but also available with any elastomer required for your application

SPECIFICATION

| | |
|-------------------|-----------------------------------|
| Connection method | Lever actuated |
| Connection type | Internal tubes / bores |
| Pressure rating | 68.8 bar (1000 psi) |
| Temperature range | -40°C to +121°C (-40°F to +250°F) |

MATERIALS

| | |
|-------------------|---------------------------------------|
| Housing materials | Aluminium, stainless steel and Delrin |
| Seal material | Neoprene |

INTERNAL TUBE & THREAD CONNECTOR

BASE CONNECTORS WITHOUT SEALS

6410

| PART NUMBER | SEALING SIZE | TERMINATION | PRICE |
|--------------|--------------|-------------|---------|
| FASJNL00375H | 0.375" | 1/8" NPT | £620.39 |
| FASJNL00500H | 0.500" | 1/8" NPT | £620.39 |
| FASJNL10625 | 0.625" | 1/8" NPT | £620.39 |
| FASJNL10750 | 0.750" | 1/8" NPT | £627.75 |
| FASJNL21000 | 1" | 1/8" NPT | £865.83 |

SEAL SETS

BULK SEAL SET 5 REPLACEMENT SEALS

6410

| PART NUMBER | FOR USE WITH | PRICE |
|-------------|--------------|--------|
| FASSN00375H | FASJNL00375H | £46.59 |
| FASSN00500H | FASJNL00500H | £46.59 |
| FASSN10625 | FASJNL10625 | £46.59 |
| FASSN10750 | FASJNL10750 | £46.59 |
| FASSN21000 | FASJNL21000 | £46.59 |

JXL SERIES
DESCRIPTION

The JXL Series is ideal for external connections to copper, steel and aluminium tubes used with manufacturing and refrigerant based products, such as heat exchangers, pressure vessels, gauges, valves, and HVAC-R systems. The unique collet gripping and sealing design seals reliably and resists removal under pressure. The single seal design can be quickly changed to minimise downtime, maintenance and tool inventory.

FEATURES

- Instant connections from vacuum (10 micron) to 1000 psi
- Seals straight bore, step bore, smooth or cast surfaces
- Safety design feature prevents accidental disconnect under pressure
- Collet design provides maximum grip with minimum distortion of test piece
- Neoprene seals are standard for refrigerant based applications, but also available with any elastomer required for your application

SPECIFICATION

| | |
|-------------------|-----------------------------------|
| Connection method | Lever actuated |
| Connection type | Internal tubes / bores |
| Pressure rating | 68.8 bar (1000 psi) |
| Temperature range | -40°C to +121°C (-40°F to +250°F) |

MATERIALS

| | |
|-------------------|---------------------------------------|
| Housing materials | Aluminium, stainless steel and Delrin |
| Seal material | Neoprene |

EXTERNAL TUBE & THREAD CONNECTOR

BASE CONNECTORS WITHOUT SEALS

6410

| PART NUMBER | SEALING SIZE | TERMINATION | PRICE |
|-------------|--------------|-------------|---------|
| FASJXL00250 | 0.250" | 1/8" NPT | £237.86 |
| FASJXL00375 | 0.375" | 1/8" NPT | £247.67 |
| FASJXL00500 | 0.500" | 1/8" NPT | £268.51 |
| FASJXL10625 | 0.625" | 1/4" NPT | £673.12 |
| FASJXL10750 | 0.750" | 1/4" NPT | £771.20 |
| FASJXL10875 | 0.875" | 1/4" NPT | £807.98 |

SEAL SETS

BULK SEAL SET 5 REPLACEMENT SEALS

6410

| PART NUMBER | FOR USE WITH | PRICE |
|-------------|--------------|--------|
| FASSXL00250 | FASJXL00250 | £55.17 |
| FASSXL00375 | FASJXL00375 | £55.17 |
| FASSXL00500 | FASJXL00500 | £55.17 |
| FASSXL10625 | FASJXL10625 | £55.17 |
| FASSXL10750 | FASJXL10750 | £55.17 |
| FASSXL10875 | FASJXL10875 | £55.17 |

DESCRIPTION

FasTest's patented squeeze lever actuation and split collet design, of the FasMate FN Series connectors, provides an instant connection that can significantly decrease the time needed for pressure and vacuum testing, filling, flushing and performance testing. The squeeze lever / split collet operation uses no thread sealant, no wrench tightening and will not damage the port threads. Its rugged design is ideal for production use and FN Series offers the following actuation methods: squeeze lever, pneumatic pilot or pneumatic thumb latch.

FEATURES

- Instant connection to threaded ports
- Seals to 5000 psi for pneumatic / hydraulic testing
- Safe, reliable, leak tight connection
- Eliminates thread or product damage, sealant and wrench tightening
- Durable stainless steel construction
- Available in multiple thread profiles

SPECIFICATION

| | |
|------------------------|--|
| Pressure rating | 1/8" – 1/2": 5000 psi (345 bar) 3/4": 3500 psi (240 bar) |
| Max. side load rating | FN: 12.5 – 75 in-lbs (1.4 – 8.4 Nm) FX: 12.5 – 50 in-lbs (1.4 – 5.65 Nm) FNR: 9.38 – 28.13 in-lbs (1.06 – 3.18 Nm) |
| FNV/FNP pilot pressure | 65 – 120 psi (4.5 to 8 bar) |
| FNV/FNP load rating | 1/8" female NPT |
| MATERIALS | |
| Housing materials | Stainless steel and anodised aluminium |
| Seal material | Buna-N |

EXTERNAL THREAD CONNECTORS
SQUEEZE LEVER OPERATION
**CONNECTS TO / SEALS MALE BSPP
THREAD**


6410

| PART NUMBER | CONNECTS TO | TERMINATION | BODY SIZE | PRICE |
|--------------|-------------|-------------|-----------|----------|
| FASFXL025041 | 1/8" BSPP | 1/4" NPT | 1 | £1550.93 |
| FASFXL045041 | 1/4" BSPP | 1/4" NPT | 1 | £1531.37 |
| FASFXL065061 | 3/8" BSPP | 3/8" NPT | 2 | £1738.38 |
| FASFXL085061 | 1/2" BSPP | 3/8" NPT | 2 | £1653.98 |

CONNECTS TO / SEALS MALE BSPT THREAD

| PART NUMBER | CONNECTS TO | TERMINATION | BODY SIZE | PRICE |
|---------------|-------------|-------------|-----------|----------|
| FASFXL025T041 | 1/8" BSPT | 1/4" NPT | 1 | £1550.93 |
| FASFXL045T041 | 1/4" BSPT | 1/4" NPT | 1 | £1550.93 |
| FASFXL065T061 | 3/8" BSPT | 3/8" NPT | 2 | £1738.38 |
| FASFXL085T061 | 1/2" BSPT | 3/8" NPT | 2 | £1738.38 |

PNEUMATIC PILOT OPERATION
CONNECTS TO MALE BSPP THREAD


6410

| PART NUMBER | CONNECTS TO | TERMINATION | BODY SIZE | PRICE |
|--------------|-------------|-------------|-----------|----------|
| FASFXP025041 | 1/8" BSPP | 1/4" NPT | 1 | £1550.93 |
| FASFXP045041 | 1/4" BSPP | 1/4" NPT | 1 | £1550.93 |
| FASFXP065061 | 3/8" BSPP | 3/8" NPT | 2 | £1738.38 |
| FASFXP085061 | 1/2" BSPP | 3/8" NPT | 2 | £1738.38 |

CONNECTS TO MALE BSPT THREAD

| PART NUMBER | CONNECTS TO | TERMINATION | BODY SIZE | PRICE |
|---------------|-------------|-------------|-----------|----------|
| FASFXP025T041 | 1/8" BSPT | 1/4" NPT | 1 | £1550.93 |
| FASFXP045T041 | 1/4" BSPT | 1/4" NPT | 1 | £1550.93 |
| FASFXP065T061 | 3/8" BSPT | 3/8" NPT | 2 | £1738.38 |
| FASFXP085T061 | 1/2" BSPT | 3/8" NPT | 2 | £1738.38 |

PNEUMATIC THUMB VALVE OPERATION
**CONNECTS TO / SEALS MALE BSPP
THREAD**


6410

| PART NUMBER | CONNECTS TO | TERMINATION | BODY SIZE | PRICE |
|--------------|-------------|-------------|-----------|----------|
| FASFXV025041 | 1/8" BSPP | 1/4" NPT | 1 | £1550.93 |
| FASFXV045041 | 1/4" BSPP | 1/4" NPT | 1 | £1531.37 |
| FASFXV065061 | 1/4" BSPP | 1/4" NPT | 2 | £1738.38 |
| FASFXV085061 | 1/2" BSPP | 3/8" NPT | 2 | £1715.28 |

CONNECTS TO / SEALS MALE BSPT THREAD

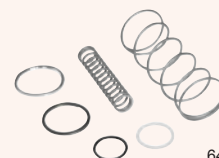
| PART NUMBER | CONNECTS TO | TERMINATION | BODY SIZE | PRICE |
|---------------|-------------|-------------|-----------|----------|
| FASFXV025T041 | 1/8" BSPT | 1/4" NPT | 1 | £1550.93 |
| FASFXV045T041 | 1/4" BSPT | 1/4" NPT | 1 | £1550.93 |
| FASFXV065T061 | 3/8" BSPT | 3/8" NPT | 2 | £1738.38 |
| FASFXV085T061 | 1/2" BSPT | 3/8" NPT | 2 | £1738.38 |

REPLACEMENT SEAL SET
**SEAL SET
5 REPLACEMENT SEALS
BUNA-N**


6410

| PART NUMBER | FOR USE WITH | PRICE |
|-------------|--------------|--------|
| FASS1105B70 | 1/8" threads | £33.10 |
| FASS1108B70 | 1/4" threads | £33.10 |
| FASS1110B70 | 3/8" threads | £36.78 |
| FASS1112B70 | 1/2" threads | £38.01 |

PUR seals available on request

REPAIR KIT


6410

| PART NUMBER | FOR USE WITH | PRICE |
|-------------|--------------|---------|
| FASRFXL021 | 1/8" threads | £128.11 |
| FASRFXL041 | 1/4" threads | £115.25 |
| FASRFXL061 | 3/8" threads | £103.84 |
| FASRFXL081 | 1/2" threads | £115.98 |

INTERNAL THREAD CONNECTORS

SQUEEZE LEVER OPERATION
CONNECTS TO FEMALE BSPP PORTS

6410

| PART NUMBER | CONNECTS TO | TERMINATION | BODY SIZE | PRICE |
|--------------|-------------|-------------|-----------|----------|
| FASFNL026025 | 1/8" BSPP | 1/8" BSPP | 1 | £884.00 |
| FASFNL046045 | 1/4" BSPP | 1/4" BSPP | 2 | £884.00 |
| FASFNL066065 | 3/8" BSPP | 3/8" BSPP | 3 | £989.44 |
| FASFNL086085 | 1/2" BSPP | 1/2" BSPP | 4 | £1149.40 |
| FASFNL126125 | 3/4" BSPP | 3/4" BSPP | 5 | £1528.44 |

CONNECTS TO FEMALE BSPT PORTS

| PART NUMBER | CONNECTS TO | TERMINATION | BODY SIZE | PRICE |
|---------------|-------------|-------------|-----------|----------|
| FASFNL026T025 | 1/8" BSPT | 1/8" BSPT | 1 | £884.00 |
| FASFNL046T045 | 1/4" BSPT | 1/4" BSPT | 2 | £884.00 |
| FASFNL066T065 | 3/8" BSPT | 3/8" BSPT | 3 | £989.44 |
| FASFNL086T085 | 1/2" BSPT | 1/2" BSPT | 4 | £1089.98 |
| FASFNL126T125 | 3/4" BSPT | 3/4" BSPT | 5 | £1983.59 |

CONNECTS TO FEMALE METRIC PORTS

| PART NUMBER | CONNECTS TO | TERMINATION | BODY SIZE | PRICE |
|--------------|-------------|-------------|-----------|----------|
| FASFNL108025 | M10 x 1.0 | 1/8" BSPP | 1 | £884.00 |
| FASFNL128045 | M12 x 1.5 | 1/4" BSPP | 2 | £884.00 |
| FASFNL148045 | M14 x 1.5 | 1/4" BSPP | 2 | £884.00 |
| FASFNL168065 | M16 x 1.5 | 3/8" BSPP | 3 | £989.44 |
| FASFNL188065 | M18 x 1.5 | 3/8" BSPP | 4 | £1065.42 |
| FASFNL208065 | M20 x 1.5 | 3/8" BSPP | 4 | £1065.42 |
| FASFNL228085 | M22 x 1.5 | 1/2" BSPP | 4 | £1258.28 |


PNEUMATIC PILOT OPERATION
CONNECTS TO FEMALE BSPP PORTS

6410

| PART NUMBER | CONNECTS TO | TERMINATION | BODY SIZE | PRICE |
|--------------|-------------|-------------|-----------|----------|
| FASFNP026025 | 1/8" BSPP | 1/8" BSPP | 1 | £887.40 |
| FASFNP046045 | 1/4" BSPP | 1/4" BSPP | 2 | £887.40 |
| FASFNP066065 | 3/8" BSPP | 3/8" BSPP | 3 | £993.93 |
| FASFNP086085 | 1/2" BSPP | 1/2" BSPP | 4 | £1140.94 |
| FASFNP126125 | 3/4" BSPP | 3/4" BSPP | 5 | £1517.21 |

CONNECTS TO FEMALE BSPT PORTS

| PART NUMBER | CONNECTS TO | TERMINATION | BODY SIZE | PRICE |
|---------------|-------------|-------------|-----------|----------|
| FASFNP026T025 | 1/8" BSPT | 1/8" BSPT | 1 | £887.40 |
| FASFNP046T045 | 1/4" BSPT | 1/4" BSPT | 2 | £887.40 |
| FASFNP066T065 | 3/8" BSPT | 3/8" BSPT | 3 | £993.93 |
| FASFNP086T085 | 1/2" BSPT | 1/2" BSPT | 4 | £1081.61 |
| FASFNP126T125 | 3/4" BSPT | 3/4" BSPT | 5 | £1969.00 |

CONNECTS FEMALE TO METRIC PORTS

| PART NUMBER | CONNECTS TO | TERMINATION | BODY SIZE | PRICE |
|--------------|-------------|-------------|-----------|----------|
| FASFNP108025 | M10 x 1.0 | 1/8" BSPP | 1 | £887.40 |
| FASFNP128045 | M12 x 1.5 | 1/4" BSPP | 2 | £884.00 |
| FASFNP148045 | M14 x 1.5 | 1/4" BSPP | 2 | £887.40 |
| FASFNP168065 | M16 x 1.5 | 3/8" BSPP | 3 | £993.93 |
| FASFNP188065 | M18 x 1.5 | 3/8" BSPP | 4 | £1065.42 |
| FASFNP208065 | M20 x 1.5 | 3/8" BSPP | 4 | £1065.42 |
| FASFNP228085 | M22 x 1.5 | 1/2" BSPP | 4 | £1258.28 |


PNEUMATIC THUMB VALVE OPERATION
CONNECTS TO FEMALE BSPP PORTS

6410

| PART NUMBER | CONNECTS TO | TERMINATION | BODY SIZE | PRICE |
|--------------|-------------|-------------|-----------|----------|
| FASFNV026025 | 1/8" BSPP | 1/8" BSPP | 1 | £884.00 |
| FASFNV046045 | 1/4" BSPP | 1/4" BSPP | 2 | £884.00 |
| FASFNV066065 | 3/8" BSPP | 3/8" BSPP | 3 | £993.93 |
| FASFNV086085 | 1/2" BSPP | 1/2" BSPP | 4 | £1140.94 |
| FASFNV126125 | 3/4" BSPP | 3/4" BSPP | 5 | £1517.21 |

CONNECTS TO FEMALE BSPT PORTS

| PART NUMBER | CONNECTS TO | TERMINATION | BODY SIZE | PRICE |
|---------------|-------------|-------------|-----------|----------|
| FASFNV026T025 | 1/8" BSPT | 1/8" BSPT | 1 | £887.40 |
| FASFNV046T045 | 1/4" BSPT | 1/4" BSPT | 2 | £884.00 |
| FASFNV066T065 | 3/8" BSPT | 3/8" BSPT | 3 | £993.93 |
| FASFNV086T085 | 1/2" BSPT | 1/2" BSPT | 4 | £1074.04 |
| FASFNV126T125 | 3/4" BSPT | 3/4" BSPT | 5 | £1969.00 |

CONNECTS TO FEMALE METRIC PORTS

| PART NUMBER | CONNECTS TO | TERMINATION | BODY SIZE | PRICE |
|--------------|-------------|-------------|-----------|----------|
| FASFNV108025 | M10 x 1.0 | 1/8" BSPP | 1 | £884.00 |
| FASFNV128045 | M12 x 1.5 | 1/4" BSPP | 2 | £884.00 |
| FASFNV148045 | M14 x 1.5 | 1/4" BSPP | 2 | £887.40 |
| FASFNV168065 | M16 x 1.5 | 3/8" BSPP | 3 | £993.93 |
| FASFNV188065 | M18 x 1.5 | 3/8" BSPP | 4 | £1065.42 |
| FASFNV208065 | M20 x 1.5 | 3/8" BSPP | 4 | £1065.42 |
| FASFNV228085 | M22 x 1.5 | 1/2" BSPP | 4 | £1258.28 |

REPLACEMENT SEAL SET

SEAL SET
5 REPLACEMENT SEALS
BUNA-N

6410

| PART NUMBER | FOR USE WITH | PRICE |
|-----------------|-------------------------|--------|
| FASS1108B70 | 1/8" & M10 threads | £33.10 |
| FASS21250327B60 | 1/4", M12 & M14 threads | £39.23 |
| FASS1112B70 | 3/8" threads | £38.01 |
| FASS1208B70 | 1/2" threads | £38.01 |
| FASS1315B50 | 3/4" threads | £44.14 |
| FASS21200445B70 | M16 threads | £36.78 |
| FASS1206B70 | M18 threads | £38.01 |
| FASS1207B70 | M20 threads | £38.01 |
| FASS1209B70 | M22 threads | £40.46 |

PUR seals available on request

DESCRIPTION

TwistMate's unique "twist to connect" and pressure assisted grip and seal is simple to use. Turn finger-tight onto thread until face seal contacts test piece. TwistMate will automatically seal when the system is pressurised with air, gas or hydraulic pressure that presses the main seal against the test piece. The internal piston action maintains the seal with minimum pressure. TwistMate connectors are not designed for or intended as permanent connections. Such use may result in inadvertent loosening and media loss.

FEATURES

- For vacuum or pressure test applications up to 10,000 psi (689 bar)
- Eliminates tape, sealants and operator fatigue from traditional wrenching methods
- Reduces wear on test piece and prevents contamination of media
- Easy to use with operator adjustment necessary
- Rugged stainless steel construction endures demanding production environments

APPLICATIONS

- Leak testing – water dunk, pressure decay, helium mass spectrometer
- Calibration, filling, pressure and proof testing
- Ideal for piping, cooling, heating, fluid, hydraulic, pneumatic, refrigerant and fittings
- Eliminates tape, sealants, wrenches and damage to threaded parts
- Durable, easy to replace main seal


SPECIFICATION

| | |
|-------------------|---------------------------|
| Connection type | External threads (female) |
| Connection method | Twist to connect |

MATERIALS

| | |
|-------|----------|
| Seals | Urethane |
|-------|----------|

MET EXTERNAL THREAD CONNECTORS
**SWIVEL CONNECTOR
CONNECTS TO / SEALS
MALE BSPP THREADS**


6410

| PART NUMBER | CONNECTS TO / SEALS | TERMINATION (FEMALE) | PRESSURE RATING | PRICE |
|--------------|---------------------|----------------------|-----------------|---------|
| FASMET025025 | 1/8" BSPP | 1/8" BSPP | 5000 psi | £109.12 |
| FASMET045045 | 1/4" BSPP | 1/4" BSPP | 5000 psi | £350.66 |
| FASMET065065 | 3/8" BSPP | 3/8" BSPP | 4000 psi | POA |
| FASMET085085 | 1/2" BSPP | 1/2" BSPP | 4000 psi | POA |

**CAP
CONNECTS TO / SEALS
MALE BSPP THREADS**


6410

| PART NUMBER | CONNECTS TO / SEALS | PRESSURE RATING | PRICE |
|-------------|---------------------|-----------------|---------|
| FASMET025C | 1/8" BSPP | 5000 psi | POA |
| FASMET045C | 1/4" BSPP | 5000 psi | £141.00 |
| FASMET065C | 3/8" BSPP | 4000 psi | POA |
| FASMET085C | 1/2" BSPP | 4000 psi | POA |

CONNECTS TO / SEALS MALE BSPT THREADS

| PART NUMBER | CONNECTS TO / SEALS | TERMINATION (FEMALE) | PRESSURE RATING | PRICE |
|---------------|---------------------|----------------------|-----------------|-------|
| FASMET025T025 | 1/8" BSPT | 1/8" BSPT | 4000 psi | POA |
| FASMET045T045 | 1/4" BSPT | 1/4" BSPT | 5000 psi | POA |
| FASMET065T065 | 3/8" BSPT | 3/8" BSPT | 4000 psi | POA |
| FASMET085T085 | 1/2" BSPT | 1/2" BSPT | 4000 psi | POA |

CONNECTS TO / SEALS MALE BSPT THREADS

| PART NUMBER | CONNECTS TO / SEALS | PRESSURE RATING | PRICE |
|-------------|---------------------|-----------------|-------|
| FASMET025TC | 1/8" BSPT | 5000 psi | POA |
| FASMET045TC | 1/4" BSPT | 5000 psi | POA |
| FASMET065TC | 3/8" BSPT | 4000 psi | POA |
| FASMET085TC | 1/2" BSPT | 4000 psi | POA |

MET REPLACEMENT SEAL SET
**SEAL SET
5 REPLACEMENT SEALS
URETHANE**


6410

| PART NUMBER | FOR USE WITH | PRICE |
|-------------|--------------|--------|
| FASS1105U70 | 1/8" threads | £33.10 |
| FASS1108U70 | 1/4" threads | £33.10 |
| FASS1110U70 | 3/8" threads | £36.78 |
| FASS1112U70 | 1/2" threads | £38.01 |

PUR seals available on request

MET REPAIR KIT
EXTERNAL REPAIR KIT


6410

| PART NUMBER | FOR USE WITH | PRICE |
|-------------|--------------|--------|
| FASMETR02 | 1/8" threads | £18.39 |
| FASMETR04 | 1/4" threads | £18.39 |
| FASMETR06 | 3/8" threads | £22.07 |
| FASMETR08 | 1/2" threads | £22.07 |

MIT INTERNAL THREAD CONNECTORS


6410



6410

**SWIVEL CONNECTOR
CONNECTS TO / SEALS
FEMALE BSPP PORTS**

| PART NUMBER | CONNECTS TO / SEALS | TERMINATION (FEMALE) | PRESSURE RATING | PRICE |
|--------------|---------------------|----------------------|-----------------|----------|
| FASMIT026025 | 1/8" BSPP | 1/8" BSPP | 5000 psi | £169.20 |
| FASMIT046045 | 1/4" BSPP | 1/4" BSPP | 5000 psi | £619.01 |
| FASMIT066065 | 3/8" BSPP | 3/8" BSPP | 4000 psi | POA |
| FASMIT086085 | 1/2" BSPP | 1/2" BSPP | 4000 psi | POA |
| FASMIT126125 | 3/4" BSPP | 3/4" BSPP | 4000 psi | £1114.65 |
| FASMIT166165 | 1" BSPP | 1" BSPP | 4000 psi | £1371.17 |

**NON-SWIVEL CONNECTOR
CONNECTS TO / SEALS
FEMALE BSPP PORTS**

| PART NUMBER | CONNECTS TO / SEALS | TERMINATION (FEMALE) | PRESSURE RATING | PRICE |
|---------------|---------------------|----------------------|-----------------|---------|
| FASMIT026025X | 1/8" BSPP | 1/8" BSPP | 5000 psi | £120.16 |
| FASMIT046045X | 1/4" BSPP | 1/4" BSPP | 5000 psi | £303.44 |
| FASMIT066065X | 3/8" BSPP | 3/8" BSPP | 4000 psi | £215.52 |
| FASMIT086085X | 1/2" BSPP | 1/2" BSPP | 4000 psi | £170.42 |
| FASMIT126125X | 3/4" BSPP | 3/4" BSPP | 4000 psi | £313.88 |
| FASMIT166165X | 1" BSPP | 1" BSPP | 4000 psi | £819.97 |

CONNECTS TO / SEALS FEMALE BSPT PORTS

| | | | | |
|---------------|-----------|-----------|----------|-----|
| FASMIT026T025 | 1/8" BSPT | 1/8" BSPT | 5000 psi | POA |
| FASMIT046T045 | 1/4" BSPT | 1/4" BSPT | 5000 psi | POA |
| FASMIT066T065 | 3/8" BSPT | 3/8" BSPT | 4000 psi | POA |
| FASMIT086T085 | 1/2" BSPT | 1/2" BSPT | 4000 psi | POA |
| FASMIT126T125 | 3/4" BSPT | 3/4" BSPT | 4000 psi | POA |
| FASMIT166T165 | 1" BSPT | 1" BSPT | 4000 psi | POA |

CONNECTS TO / SEALS FEMALE BSPT PORTS

| | | | | |
|----------------|-----------|-----------|----------|---------|
| FASMIT026T025X | 1/8" BSPT | 1/8" BSPT | 5000 psi | £124.07 |
| FASMIT046T045X | 1/4" BSPT | 1/4" BSPT | 5000 psi | £149.70 |
| FASMIT066T065X | 3/8" BSPT | 3/8" BSPT | 4000 psi | £219.82 |
| FASMIT086T085X | 1/2" BSPT | 1/2" BSPT | 4000 psi | POA |
| FASMIT126T125X | 3/4" BSPT | 3/4" BSPT | 4000 psi | POA |
| FASMIT166T165X | 1" BSPT | 1" BSPT | 4000 psi | POA |

CONNECTS TO / SEALS FEMALE METRIC PORTS

| | | | | |
|--------------|-----------|-----------|----------|---------|
| FASMIT108025 | M10 x 1.0 | 1/8" BSPP | 5000 psi | £172.63 |
| FASMIT128045 | M12 x 1.5 | 1/4" BSPP | 5000 psi | POA |
| FASMIT148045 | M14 x 1.5 | 1/4" BSPP | 5000 psi | POA |
| FASMIT168045 | M16 x 1.5 | 3/8" BSPP | 4000 psi | POA |
| FASMIT188065 | M18 x 1.5 | 3/8" BSPP | 4000 psi | POA |
| FASMIT228085 | M22 x 1.5 | 1/2" BSPP | 4000 psi | £802.44 |

MIT REPLACEMENT SEAL SET


6410

**SEAL SET
5 REPLACEMENT SEALS
URETHANE**

| PART NUMBER | FOR USE WITH | PRICE |
|-------------|--------------|--------|
| FASS1109U70 | 1/8" threads | £33.10 |
| FASS1111U70 | 1/4" threads | £36.78 |
| FASS1113U70 | 3/8" threads | £38.01 |
| FASS1209U70 | 1/2" threads | £40.46 |

PUR seals available on request

PLUG
**CONNECTS TO / SEALS
FEMALE BSPP PORTS**


6410

| PART NUMBER | CONNECTS TO / SEALS | PRESSURE RATING | PRICE |
|-------------|---------------------|-----------------|---------|
| FASMIT026P | 1/8" BSPP | 5000 psi | POA |
| FASMIT046P | 1/4" BSPP | 5000 psi | POA |
| FASMIT066P | 3/8" BSPP | 4000 psi | £200.98 |
| FASMIT086P | 1/2" BSPP | 4000 psi | £163.95 |
| FASMIT126P | 3/4" BSPP | 4000 psi | £394.04 |
| FASMIT166P | 1" BSPP | 4000 psi | £439.65 |

CONNECTS TO / SEALS FEMALE BSPT PORTS

| | | | |
|-------------|-----------|----------|---------|
| FASMIT026TP | 1/8" BSPT | 5000 psi | POA |
| FASMIT046TP | 1/4" BSPT | 5000 psi | £109.12 |
| FASMIT066TP | 3/8" BSPT | 4000 psi | £196.91 |
| FASMIT086TP | 1/2" BSPT | 4000 psi | POA |
| FASMIT126TP | 3/4" BSPT | 4000 psi | £313.88 |
| FASMIT166TP | 1" BSPT | 4000 psi | £366.60 |

CONNECTS TO / SEALS FEMALE METRIC PORTS

| | | | |
|------------|-----------|----------|---------|
| FASMIT108P | M10 x 1.0 | 5000 psi | POA |
| FASMIT128P | M12 x 1.5 | 5000 psi | POA |
| FASMIT148P | M14 x 1.5 | 5000 psi | £368.18 |
| FASMIT168P | M16 x 1.5 | 4000 psi | POA |
| FASMIT188P | M18 x 1.5 | 4000 psi | £268.38 |
| FASMIT228P | M22 x 1.5 | 4000 psi | POA |

MIT REPAIR KIT
**INTERNAL REPAIR KIT
FOR SWIVEL CONNECTOR**


6410

| PART NUMBER | FOR USE WITH | PRICE |
|-------------|----------------------|--------|
| FASMITR020 | 1/8" and M10 threads | £17.17 |
| FASMITR040 | 1/4" and M12 threads | £17.17 |
| FASMITR060 | 3/8" and M14 threads | £17.17 |
| FASMITR080 | 1/2" and M16 threads | £17.17 |
| FASMITR120 | 3/4" and M18 threads | £20.84 |
| FASMITR160 | 1" and M22 threads | £23.30 |

FOR NON-SWIVEL CONNECTOR

| | | |
|-----------|----------------|--------|
| FASMITR02 | 1/8" threads | £13.49 |
| FASMITR04 | 1/4" threads | £13.49 |
| FASMITR06 | 3/8" threads | £13.49 |
| FASMITR08 | 1/2" threads | £13.49 |
| FASMITR12 | 3/4" threads | £15.94 |
| FASMITR16 | 1" threads | £17.17 |
| FASMITR20 | 1 1/4" threads | £20.84 |