

AIR TOOLS, GARAGE EQUIPMENT & ANCILLARY EQUIPMENT



978

CAMLOC
Gas Spring
& Accessories



994

PCL
Motor
Accessories



982

OLIVIBRA
Vibration
Products



995

PARKAIR
Air Tools



984

LOC-LINE
Pop-Loc
Coolant Lines



999

HYTEK
Fuelling
Equipment



985

PARKAIR
Hand Tools



1000

LUBETEC UK
Lubrication
Fittings



986

PARKAIR
Measuring
Instruments



1003

SAMOA
Metal &
Polyethylene
Dispensing
Aids



987

TENGTTOOLS
Tools & Tool
Sets



1008

GROZ
Manual, Battery
& Air Operated
Greasing
Equipment



990

PCL
Tyre Inflation
Equipment



1012

GROZ
Air Operated
Oil Transfer
Equipment

AIR TOOLS, GARAGE EQUIPMENT & ANCILLARY EQUIPMENT



1014

GROZ
Manual Oil
Transfer
Equipment

New
Additions



1021

GROZ
Lubrication
Accessories



New
Additions

1015

GROZ
Oil Dispensing
Kits



1025

PANTHER
Silent
Compressors
Oil Lubricated



1016

GROZ
Nozzles



1027

PANTHER
Oil Free
Compressors
& Accessories



1017

GROZ
Fuel Handling
Equipment



1028

PANTHER
Oil Free
Compressors
with Dryer



1019

GROZ
Pumps
& Pump Kits



1028

PANTHER
Oil Free
Compressors
with Dryer &
Silbox



New
Additions

1020

GROZ
Speciality
Pumps



1029

PARKAIR
Air Receivers
& Accessories



1020

GROZ
Flow Meters

STANDARD SWIFT & SURE GAS SPRINGS WITH VARI-LIFT™ VALVE



DESCRIPTION

VARI-LIFT™ is an adjustable force gas spring that can be set to meet your exacting standards. It can also be adjusted whilst in position on the application, saving you both time and effort. The gas springs are charged to their maximum force during manufacture. By using the tool provided, gas can be gradually released via the VARI-LIFT™ valve at the end of the tube to provide the force suited to your application.

Please Note: Swift & Sure Gas Springs are sold in pairs.

BENEFITS

- No need to calculate force
- Adjustable to any force within range
- Force can be adjusted after installation
- Simple adjustment using standard tool supplied
- Ideal for prototyping and short production runs
- Available as an option on most types of Camloc gas springs
- Ideal where application weights vary
- Available in stainless steel

SPECIFICATIONS

Rod diameter	6 mm
Tube diameter	15 mm
Thread size	M5 x 0.8 male
Force	400 N
Material	Nitrided steel piston rod, black powder coated steel tube, nylon ball joint end connectors.

New

SWIFT & SURE GAS SPRINGS (PAIR)

6 MM - 15 MM STANDARD RANGE

1000

PART NUMBER	STROKE	EXTENDED LENGTH	TUBE LENGTH	PRICE per pair
GS-SWV6P1060095P1L	60 mm	195 mm	95 mm	£47.17
GS-SWV6P1100135P1L	100 mm	275 mm	135 mm	£41.95
GS-SWV6P1150185P1L	150 mm	375 mm	185 mm	£43.14
GS-SWV6P1200235P1L	200 mm	475 mm	235 mm	£43.84

SPECIFICATIONS

Rod diameter	8 mm
Tube diameter	18 mm
Thread size	M6 x 1.0 male
Force	650 N
Material	Nitrided steel piston rod, black powder coated steel tube, steel ball joint end connectors.

New

SWIFT & SURE GAS SPRINGS (PAIR)

8 MM - 18 MM STANDARD RANGE

1000

PART NUMBER	STROKE	EXTENDED LENGTH	TUBE LENGTH	PRICE per pair
GS-SWV8B2100159B2L	100 mm	300 mm	159 mm	£45.79
GS-SWV8B2150209B2L	150 mm	400 mm	209 mm	£61.76
GS-SWV8B2200259B2L	200 mm	500 mm	259 mm	£48.03
GS-SWV8B2250309B2L	250 mm	600 mm	309 mm	£49.86

New

SWIFT & SURE GAS SPRINGS (PAIR)

10 MM - 23 MM STANDARD RANGE

1000

PART NUMBER	STROKE	EXTENDED LENGTH	TUBE LENGTH	PRICE per pair
GS-SWV1B4100140B4L	100 mm	305 mm	140 mm	£66.30
GS-SWV1B4200240B4L	200 mm	505 mm	240 mm	£61.76
GS-SWV1B4250290B4L	250 mm	605 mm	290 mm	£48.03
GS-SWV1B4300340B4L	300 mm	705 mm	340 mm	£49.86

SPECIFICATIONS

Rod diameter	10 mm
Tube diameter	23 mm
Thread size	M8 x 1.25 male
Force	1200 N
Material	Nitrided steel piston rod, black powder coated steel tube, steel ball joint end connectors.

316L STAINLESS STEEL SWIFT & SURE GAS SPRINGS WITH VARI-LIFT™ VALVE



DESCRIPTION

VARI-LIFT™ is an adjustable force gas spring that can be set to meet your exacting standards. It can also be adjusted whilst in position on the application, saving you both time and effort. The gas springs are charged to their maximum force during manufacture. By using the tool provided, gas can be gradually released via the VARI-LIFT™ valve at the end of the tube to provide the force suited to your application.

Please Note: Swift & Sure Gas Springs are sold in pairs.

BENEFITS

- No need to calculate force
- Adjustable to any force within range
- Force can be adjusted after installation
- Simple adjustment using standard tool supplied
- Ideal for prototyping and short production runs
- Ideal where application weights vary
- 316L stainless steel

SPECIFICATIONS

Rod diameter	6 mm
Tube diameter	15 mm
Thread size	M5 x 0.8 male
Force	400 N
Material	316 stainless steel piston rod and tube, nylon ball joint end connectors.

New

SWIFT & SURE GAS SPRINGS (PAIR)

6 MM - 15 MM STANDARD RANGE

1000

PART NUMBER	STROKE	EXTENDED LENGTH	TUBE LENGTH	PRICE per pair
GS-SXV6PE060095PEL	60 mm	195 mm	95 mm	£79.90
GS-SXV6PE100135PEL	100 mm	275 mm	135 mm	£96.61
GS-SXV6PE150185PEL	150 mm	375 mm	185 mm	£117.47
GS-SXV6PE200235PEL	200 mm	475 mm	235 mm	£138.37

SPECIFICATIONS

Rod diameter	8 mm
Tube diameter	18 mm
Thread size	M6 x 1.0 male
Force	650 N
Material	316 stainless steel piston rod and tube, nylon ball joint end connectors.

New

SWIFT & SURE GAS SPRINGS (PAIR)

8 MM - 18 MM STANDARD RANGE

1000

PART NUMBER	STROKE	EXTENDED LENGTH	TUBE LENGTH	PRICE per pair
GS-SXV8PV100159PVL	100 mm	300 mm	159 mm	£83.39
GS-SXV8PV150209PVL	150 mm	400 mm	209 mm	£95.62
GS-SXV8PV200259PVL	200 mm	500 mm	259 mm	£107.87
GS-SXV8PV250309PVL	250 mm	600 mm	309 mm	£119.71
GS-SXV8PV300359PVL	300 mm	700 mm	359 mm	£133.82

SPECIFICATIONS

Rod diameter	10 mm
Tube diameter	23 mm
Thread size	M8 x 1.25 male
Force	1200 N
Material	316 stainless steel piston rod and tube, stainless steel ball joint end connectors.

New

SWIFT & SURE GAS SPRINGS (PAIR)

10 MM - 23 MM STANDARD RANGE

1000

PART NUMBER	STROKE	EXTENDED LENGTH	TUBE LENGTH	PRICE per pair
GS-SXV1G5100140G5L	100 mm	305 mm	140 mm	£174.53
GS-SXV1G5200240G5L	200 mm	505 mm	240 mm	£215.07
GS-SXV1G5250290G5L	250 mm	605 mm	290 mm	£227.36
GS-SXV1G5300340G5L	300 mm	705 mm	340 mm	£241.82

ECONOLOC GAS SPRINGS WITH VARI-LIFT™ VALVE



DESCRIPTION

Econoloc gas springs eliminate the need for separate safety rods in critical lift assist applications.

They positively lock when fully extended, protecting the operator from potential injury in the event of overload or misuse. Simple to use, they operate automatically. When the gas spring is fully extended, a spring loaded locking shroud moves into place, preventing the gas spring from compressing.

The Econoloc is manually released by applying thumb pressure to the designated area of the locking shroud, allowing the gas spring to compress in a controlled manner. The locking shroud is finished with the same epoxy coating as the gas spring body, providing excellent corrosion resistance. A guide inside the shroud prevents scratching of the gas spring cylinder.

The Econoloc range of gas springs combine superior quality with the added safety feature required in many heavy duty applications, such as trucks, construction machinery, switch gear and agricultural equipment. A single Econoloc gas spring can be used in conjunction with a standard Swift & Sure version.

VARI-LIFT™ is an adjustable force gas spring that can be set to meet your exacting standards. It can also be adjusted whilst in position on the application, saving you both time and effort. The gas springs are charged to their maximum force during manufacture. By using the tool provided, gas can be gradually released via the VARI-LIFT™ valve at the end of the tube to provide the force suited to your application.

BENEFITS

- Eliminates the need for separate safety rods in critical lift-assist operations
- Operates automatically
- Safe & easy to use
- Self-contained unit
- Maintenance free

MATERIALS

Nitrided steel piston rod, black powder coated steel tube, steel ball joint end connectors.

Please Note: Econoloc Gas Springs are sold in pairs.

SPECIFICATIONS

Rod diameter	8 mm
Tube diameter	18 mm
Thread size	M6 x 1.0 male
Force	650 N



ECONOLOC GAS SPRINGS (PAIR)
8 MM - 18 MM STANDARD RANGE

1000

PART NUMBER	STROKE	EXTENDED LENGTH	TUBE LENGTH	PRICE per pair
GS-SWV8ECV800030	100 mm	280 mm	139 mm	£69.98
GS-SWV8ECV800031	150 mm	400 mm	209 mm	£72.48
GS-SWV8ECV800032	200 mm	500 mm	259 mm	£74.98
GS-SWV8ECV800033	250 mm	600 mm	309 mm	£77.44



ECONOLOC GAS SPRINGS (PAIR)
10 MM - 23 MM STANDARD RANGE

1000

SPECIFICATIONS

Rod diameter	10 mm
Tube diameter	23 mm
Thread size	M8 x 1.25 male
Force	1200 N

PART NUMBER	STROKE	EXTENDED LENGTH	TUBE LENGTH	PRICE per pair
GS-SWV1ECV100030	200 mm	505 mm	240 mm	£108.67
GS-SWV1ECV100031	300 mm	705 mm	340 mm	£119.49

New



1000

NYLON BALL JOINT

PART NUMBER	MALE THREAD	FEMALE THREAD	PRICE
GS-062827	M5 x 0.8	M5 x 0.8	£4.83
GS-084260	M8 x 1.25	M6 x 1.0	£4.00

WITH STAINLESS STEEL PIN

GS-064340	M5 x 0.8	M5 x 0.8	£4.83
GS-084255	M8 x 1.25	M6 x 1.0	£6.94

New



1000

MILD STEEL BALL JOINT

PART NUMBER	MALE THREAD	FEMALE THREAD	PRICE
GS-082588	M8 x 1.25	M6 x 1.0	£3.65
GS-102590	M8 x 1.25	M8 x 1.25	£4.48

New



1000

STAINLESS STEEL BALL JOINT

PART NUMBER	MALE THREAD	FEMALE THREAD	PRICE
GS-084331	M8 x 1.2	M6 x 1.0	£29.60
GS-104333	M8 x 1.25	M8 x 1.25	£19.23

New



1000

ZINC EYE

PART NUMBER	THREAD	DIA	PRICE
GS-080653	M6 x 1.0	8.3 mm	£3.84
GS-080654	M8 x 1.25	10.3 mm	£3.84

New



1000

NYLON EYE

PART NUMBER	THREAD	DIA	PRICE
GS-061018	M5 x 0.8	6.1 mm	£0.90
GS-080336	M6 x 1.0	8.1 mm	£1.34

New



1000

MILD STEEL CLEVIS FORK

PART NUMBER	THREAD	DIA	PRICE
GS-060033	M5 x 0.8	5 mm	£11.65
GS-080035	M6 x 1.0	6 mm	£7.65

New



1000

STAINLESS STEEL CLEVIS FORK

PART NUMBER	THREAD	DIA	PRICE
GS-084337	M6 x 1.0	6 mm	£8.16
GS-104338	M8 x 1.25	8 mm	£9.22

New



1000

MILD STEEL FLAT EYE

PART NUMBER	THREAD	DIA	PRICE
GS-061890	M5 x 0.8	6.1 mm	£2.50
GS-081902	M6 x 1.0	8.1 mm	£1.82
GS-101886	M8 x 1.25	8.2 mm	£4.00

New



1000

STAINLESS STEEL FLAT EYE

PART NUMBER	THREAD	DIA	PRICE
GS-084334	M6 x 1.0	8 mm	£10.14
GS-104335	M8 x 1.25	8 mm	£3.14

New



1000

MILD STEEL FLAT BRACKET WITH PIN

PART NUMBER	THREAD	PRICE
GS-04266	M8 x 1.25	£2.88

New



1000

MILD STEEL FLAT BRACKET WITH BALL PIN

PART NUMBER	DESCRIPTION	PRICE
GS-04262	Ball pin	£3.55

New



1000

MILD STEEL 90° BRACKET WITH PIN

PART NUMBER	THREAD	PRICE
GS-04267	M8 x 1.25	£6.43

New



1000

MILD STEEL 90° BRACKET WITH BALL PIN

PART NUMBER	DESCRIPTION	PRICE
GS-04263	Ball pin	£3.55

New



1000

MILD STEEL U BRACKET

PART NUMBER	DESCRIPTION	PRICE
GS-04643	U bracket	£9.34

ROTARY BALL VIBRATORS

DESCRIPTION

The frequency is variable by adjusting the inlet pressure. Rotary ball vibrators "S-type" are available in eight sizes. No maintenance required.

APPLICATIONS

- Bins and hoppers
- Compacting
- Separation

For activation, a 2/2 way electrovalve and filtered compressed air are required.



ROTARY BALL VIBRATORS S-TYPE

6200

PART NUMBER	FORCE (KG) AT 6 BAR	PRICE
OL-S8	36	£113.40
OL-S10	71	£116.10
OL-S13	87	£124.20
OL-S16	110	£129.60
OL-S20	172	£143.10
OL-S25	205	£153.90
OL-S30	321	£199.80
OL-S36	405	£213.30

UNBALANCED ROTOR VIBRATORS

DESCRIPTION

Vibration is generated by a rotor, which describes an epicycloidal movement inside a steel race. OR vibrators generate a very high frequency with low consumption compared to the force given.

APPLICATIONS

- Bins and hoppers
- Moulding dies
- Compacting
- Separation
- Foundries

For activation, a 2/2 way electrovalve and filtered compressed air are required.



UNBALANCED ROTOR VIBRATORS OR-TYPE

6200

PART NUMBER	FORCE (KG) AT 6 BAR	PRICE
OL-OR50	355	£213.30
OL-OR65	552	£234.90
OL-OR80	624	£305.10
OL-OR100	783	£402.30

TURBINE VIBRATORS

DESCRIPTION

Vibration is generated by a strongly unbalanced turbine, which rotates on two oversized ball bearings. OT vibrators develop a high work moment and a high vibration frequency. Vibrations present a large amplitude, even with low operating pressure.

APPLICATIONS

- Food and Pharmaceutical Industries
- Bins and Hoppers
- Screens

For activation, a 2/2 way electrovalve and filtered compressed air are required.



TURBINE VIBRATORS OT-TYPE

6200

PART NUMBER	FORCE (KG) AT 6 BAR	PRICE
OL-OT8	292	£213.30
OL-OT10	252	£224.10
OL-OT10S	187	£237.60
OL-OT13	300	£245.70
OL-OT16	264	£253.80
OL-OT16S	234	£267.30
OL-OT20	526	£297.00
OL-OT25	508	£307.80
OL-OT25S	483	£324.00
OL-OT30	781	£375.30
OL-OT36	749	£383.40
OL-OT36S	754	£434.70

PNEUMATIC IMPACT VIBRATORS

DESCRIPTION

They generate an extremely high impact force and they are particularly suitable for use with silos, hoppers and pipings to avoid the formation of crusts, bridges or rat holes.

ADVANTAGES

- High impact force
- Limited air consumption
- Lubrication not essential
- Flameproof

APPLICATIONS

- Pneumatic conveying pipes, silos and hoppers
- Filter cleaning



PNEUMATIC IMPACT VIBRATORS P-TYPE

6200

PART NUMBER	FORCE (N) AT 6 BAR	VPM AT 6 BAR	PRICE
OL-P25	954	4500	£264.60
OL-P40	1396	2800	£367.20
OL-P60	3250	1900	£691.20

PNEUMATIC PISTON VIBRATORS

DESCRIPTION

The F-series Linear Piston Vibrators by OLI® are particularly suitable for the conveying, compacting and detaching of bulk solids, due to perfectly linear vibrations. They reach optimum results in the emptying of bins or as drives for vibrating conveyors or feeders.

APPLICATIONS

- Explosion proof and maintenance free
- Adjustable frequency and amplitude
- Wide oscillations
- Excellent start/stop characteristics
- Starts in any position
- Minimum sound emission
- Low air consumption

TEMPERATURE RANGE

Standard temperature application: from -10°C to +150°C (14°F to 302°F)
Standard application of F15P: from 0°C to 100°C (32°F to 212°F)



6200

PNEUMATIC PISTON VIBRATORS

F-TYPE

PART NUMBER	FORCE (KG) AT 6 BAR	VPM AT 6 BAR	PRICE
OL-F8	3.5	3600	£264.60
OL-F15	10	2820	£315.90
OL-F15P	8.8	2340	£305.10
OL-F18	21.7	3300	£313.20
OL-F25	15.4	2220	£364.50
OL-F40	42.1	1740	£531.90
OL-F85	215.4	2280	£1088.10

VIBRATING BIN AERATORS

FEATURES

- Sturdy design
- Self-cleaning
- Abrasion-resistant
- Easy to install
- For powders and granular products

DESCRIPTION

Vibrating Bin Aerator types VB, VBE, VBI and VBM combine product aeration under operating pressure reaching 6 bar (87 psi), with an additional slight vibration on the silo wall (see data sheet for sizing, positioning and number of aerators). Due to its design, damage of the silo is impossible, even with abrasive materials. An additional backstop valve is not required as, due to the work pressure of 2 to 6 bar (29 to 87 psi), no material can enter the zone beneath the elastic FDA approved silicon lip. OLI Vibrating Bin Aerators are used for the improvement of mass flow with powders and granular materials. Thanks to FDA approval, the Vibrating Bin Aerators are suitable for food grade applications. To meet the most demanding user requirements, a stainless steel shaft version (VBI) is available.

FUNCTION

Compressed air is introduced into the stored material through the silicon lip, which adheres to the inside silo wall. By varying the work pressure within a range between 2 and 6 bar (29 to 87 psi), the intensity of vibration of the elastic silicon lip can be changed. Due to interval operation and a maximum operation time of five seconds, air consumption is very low.



6200

VIBRATING BIN AERATORS

PART NUMBER	DESCRIPTION	CFM AT 6 BAR	PRICE
OL-VBM	Miniature	4.23	£72.90
OL-VB	Bin aerator	8.82	£64.80
OL-VBI	Stainless shaft FDA approved	8.82	£129.60
OL-VBE	External mount type	8.82	£72.90

PNEUMATIC IMPACT NOZZLES

FEATURES

- Suitable for cement, lime and similar powders

DESCRIPTION

U025 and U060 Aeration Nozzles can be easily fitted on bins or silos from outside, which makes them particularly suitable for retrofitting or in cases where the inside of a bin or silo cannot be accessed.

FUNCTION

The plastic insert, with the sintered metal nozzle, is screwed into the steel nipple, which has been previously welded on the outside of the bin or silo. Then the connection with the compressed air line has to be carried out. U025 and U060 Aeration Nozzles are used with fine powdery materials at a working pressure of 0.2 bar (3 psi). Decades of experience have shown that virtually all materials can be successfully fluidised at intermittent operation, according to Pulse-Jet or Felder System.



6200

AERATION NOZZLES

PART NUMBER	OPERATING PRESSURE	PRICE
OL-U025	0.2 bar	£32.40
OL-U060	1.0 bar	£37.80



FEATURES

- Ball and socket design is fully hand-adjustable in both position and length
- Pop-Loc will not damage machine tool cutters if contact occurs
- Has no internal positioning rod that can break or restrict fluid flow
- Repeated positioning is easy and will stay in position

SPECIFICATIONS

Maximum flow rate	16 l/min (to avoid hose jetting)
Pressure rating	2 - 3 bar (30 - 50 psi)
Inside diameter	1/4"

**1/4" SYSTEM
SEGMENT PACK**



7400

PART NUMBER	DESCRIPTION	PRICE
LL41401	2 x 5.3/4" long pieces	£12.19

**1/4" SYSTEM
BULK SEGMENT PACK**



7400

PART NUMBER	DESCRIPTION	PRICE
LL49420	25 ft	£390.00

**1/4" SYSTEM
ROUNDED NOZZLES**



7400

PART NUMBER	DESCRIPTION	PRICE
LL41404	4 x 1/4"	£5.83

**1/4" SYSTEM
DOUBLE SOCKETS**



7400

PART NUMBER	DESCRIPTION	PRICE
LL41409	4 x 1/4"	£11.12

**1/4" SYSTEM
90° SPRAY BAR NOZZLES**



7400

PART NUMBER	DESCRIPTION	PRICE
LL41473	2 x 1/4"	£8.68

**1/4" SYSTEM
SAE FLARE NUT ADAPTORS**



7400

PART NUMBER	DESCRIPTION	PRICE
LL41414	4 x 1/4"	£18.51

**1/4" SYSTEM
Y FITTINGS**



7400

PART NUMBER	DESCRIPTION	PRICE
LL41408	2 x 1/4"	£8.68

**1/4" SYSTEM
90° NOZZLES**



7400

PART NUMBER	DESCRIPTION	PRICE
LL41472	4 x 1/4"	£8.10

**1/4" SYSTEM
NPT CONNECTORS**



7400

PART NUMBER	DESCRIPTION	PRICE
LL41406	4 x 1/4"	£5.83

**1/4" SYSTEM
ELBOW FITTINGS**



7400

PART NUMBER	DESCRIPTION	PRICE
LL41415	2 x 1/4"	£8.10

**1/4" SYSTEM
T FITTINGS**



7400

PART NUMBER	DESCRIPTION	PRICE
LL41416	2 x 1/4"	£9.70

**VALVES
FEMALE NPT VALVES**



7400

PART NUMBER	DESCRIPTION	PRICE
LL21193	2 x 1/4"	£14.58

**VALVES
MALE NPT VALVES**



7400

PART NUMBER	DESCRIPTION	PRICE
LL21192	2 x 1/4"	£14.58

**VALVES
IN-LINE VALVES**



7400

PART NUMBER	DESCRIPTION	PRICE
LL21194	2 x 1/4"	£14.58

**1/4" SYSTEM
EXTENDED ELEMENTS**



7400

PART NUMBER	DESCRIPTION	PRICE
LL41476	4 x 1/4"	£12.92

**1/4" SYSTEM
ELEMENT CLAMPS**



7400

PART NUMBER	DESCRIPTION	PRICE
LL41477	4 x 1/4"	£9.64

**VALVES
IN-LINE CHECK VALVES**



7400

PART NUMBER	DESCRIPTION	PRICE
LL21191	2 x 1/4"	£14.58

**THREADED COUPLINGS
FEMALE PIPE COUPLINGS**



7400

PART NUMBER	DESCRIPTION	PRICE
LL40657	4 x 1/4"	£9.42

**PLIERS
HOSE ASSEMBLY PLIERS**



7400

PART NUMBER	DESCRIPTION	PRICE
LL78001	1/4"	£33.61

1/2" system available Please ask for details.



**BALL PEIN HAMMER
HICKORY HANDLE**

1830

PART NUMBER	SIZE	PRICE
MSC-PRM73745H	4 oz	£8.39
MSC-PRM73539L	8 oz	£9.44
MSC-PRM73810C	12 oz	£11.54
MSC-PRM73562L	16 oz	£11.54



**BALL PEIN HAMMER
CARBON FIBRE HANDLE**

1830

PART NUMBER	SIZE	PRICE
MSC-PRM73638C	16 oz	£16.79
MSC-PRM73802D	24 oz	£19.94
MSC-PRM73521M	32 oz	£25.19



**DEAD BLOW HAMMERS
RUBBER-COVERED STEEL**

1830

PART NUMBER	SIZE	PRICE
MSC-PRM73877M	52 oz	£22.04



**METRIC IMPACT HEX BIT SETS
6 PIECE – 1/2" DRIVE**

1830

PART NUMBER	SIZE	PRICE
MSC-PRM74460A	6, 8, 10, 12, 14 & 17 mm	£38.31



**PRECISION SCREWDRIVERS
6 PIECE**

1830

PART NUMBER	DESCRIPTION	PRICE
MSC-PRM98544K	3 Slotted: 2, 2.3 & 3 mm, 3 Phillips: 000, 00 & 0	£14.69



**SOCKET SET
116 PIECE**

1830

PART NUMBER	DESCRIPTION	PRICE
MSC-PRM74502K	1/4", 3/8" & 1/2" Drive socket set	£167.99



**COMBINATION METRIC
WRENCH SET – CHROME
16 PIECE**

1830

PART NUMBER	SIZE	PRICE
MSC-PRM92905E	6, 7, 8, 9, 10, 11, 12, 13, 14, 15, 16, 17, 18, 19, 20 & 21 mm	£52.25



**BALL END LONG ARM
HEX KEY SET
9 PIECE**

1830

PART NUMBER	SIZE	PRICE
MSC-PRM42559L	1.5, 2, 2.5, 3, 4, 5, 6, 8 & 10 mm	£12.87



**BALL END HEX KEY SETS
22 PIECE**

1830

PART NUMBER	DESCRIPTION	PRICE
MSC-PRM42567K	Metric/inch long arm, ball ended hex key set	£23.72



**ADJUSTABLE WRENCH
BLACK OXIDE**

1830

PART NUMBER	DESCRIPTION	PRICE
MSC-PRM21998E	4" (100 mm) 1/2" Jaw capacity	£9.53
MSC-PRM22012J	8" (200 mm) 1.1/8" Jaw capacity	£9.90
MSC-PRM22038E	10" (250 mm) 1.5/16" Jaw capacity	£13.94
MSC-PRM22053H	12" (300 mm) 1.1/2" Jaw capacity	£19.06



**ADJUSTABLE WRENCH SET
BLACK OXIDE – 3 PIECE**

1830

PART NUMBER	DESCRIPTION	PRICE
MSC-PRM21907A	6", 8" & 10" Wrenches	£28.34



**PUNCH AND CHISEL SET
26 PIECE**

1830

PART NUMBER	DESCRIPTION	PRICE
MSC-PRM42816L	26 Piece set	£83.99

HAND TOOLS

LONG NOSE CUTTING PLIERS
SERRATED JAWS



1830

PART NUMBER	DESCRIPTION	PRICE
MSC-PRM76513B	6" Overall length, 2.5/16" jaw width	£10.75

LOCKING PLIERS
5 PIECE



1830

PART NUMBER	DESCRIPTION	PRICE
MSC-PRM96512A	5", 7", 10" Curved jaw/wire cutters, 6" long nose, 10" straight jaw	£45.14

HI-TECH FOLDING KNIVES
DROP POINT



1830

PART NUMBER	SIZE	PRICE
MSC-PRM75549H	3.3/8" blade length	£26.24

RETRACTABLE UTILITY KNIFE



1830

PART NUMBER	SIZE	PRICE
MSC-PRM74049D	6" Handle length	£5.25

FOLDING POCKET KNIFE



1830

PART NUMBER	SIZE	PRICE
MSC-PRM74031E	3.3/4" Handle length	£10.50

MEASURING INSTRUMENTS

12"/150 MM FEELER STOCK LENGTHS



1830

PART NUMBER	THICKNESS	PRICE
MSC-SPU91352H	0.0010"	£4.53
MSC-SPU91354M	0.0020"	£3.15

DIGITAL CALIPER WITH SPC OUTPUT



1830

PART NUMBER	RANGE	PRICE
MSC-SPU13610C	150 mm / 6"	£64.80
MSC-SPU13611M	200 mm / 8"	£107.87
MSC-SPU13612J	300 mm / 12"	£129.21
MSC-SPU13613D	600 mm / 24"	£461.19

RIGID STEEL RULES
SATIN CHROME FINISH



1830

PART NUMBER	SIZE	PRICE
MSC-SPU14456B	12" / 300 mm Dec/Met	£8.17

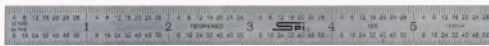
150 MM/6" PLASTI-CAL ELECTRONIC CALIPER
LIGHTWEIGHT POLYCARBONATE FRAME



1830

PART NUMBER	DESCRIPTION	PRICE
MSC-SPU14618H	150 mm / 6" Plasti-cal electronic caliper	£24.74

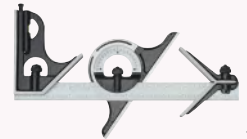
FULL FLEXIBLE STEEL RULES



1830

PART NUMBER	SIZE	PRICE
MSC-SPU14682E	6" / 150 mm Met1	£2.96
MSC-SPU14681K	6" / 150 mm Met2	£2.96
MSC-SPU14680A	150 mm Metric	£2.96

COMBINATION SQUARE SET
4 PIECE



1830

PART NUMBER	BLADE SIZE (IMP/METRIC)	PRICE
MSC-SPU13376M	12	£117.31



EVERLASTING POWER GUARANTEE



'Everlasting Power Guarantee' means that all Teng Tools products will be replaced or repaired should they break during normal usage due to a manufacturing or material fault.

FEATURES

6 Drawer, 8 series top box with ball bearing slides. Key lock rather than combination lock, metal side handles rather than dipped handles and plain drawer fronts and no drawer mats or tote tray. Each drawer has a 20 kg capacity.

SPECIFICATIONS

Overall dimensions Width 660 mm, Depth 305 mm, Height 380 mm
Weight 22 kg



1810

6 DRAWER TOP BOX

PART NUMBER	DESCRIPTION	PRICE
TTTC806NF	6 Drawer top box	£503.63



1810

HOBBY KNIFE

PART NUMBER	DESCRIPTION	PRICE
TT710H	Hobby knife	£2.93



1810

METRIC BALL POINT HEX KEY SET CHROME VANADIUM STEEL

PART NUMBER	DESCRIPTION	PRICE
TT1479MM	9 Piece metric key set	£19.13



1810

3 IN 1 INSPECTION TOOL SET

PART NUMBER	DESCRIPTION	PRICE
TTTTTM03	3 in 1 Inspection tool set	£75.10



1810

1/2" DRIVE COMPACT IMPACT WRENCH

PART NUMBER	DESCRIPTION	PRICE
TTARWM12M	1/2" Drive compact impact wrench	£355.73



1810

1/2" DRIVE COMPACT IMPACT GUN SET

PART NUMBER	DESCRIPTION	PRICE
TTTTDAWM13M	1/2" Drive compact impact gun set	£318.62



1810

2 IN 1 MAGNETIC PICK UP PEN

PART NUMBER	DESCRIPTION	PRICE
TT585MP	Telescopic with max. extension of 63 cm	£14.03



10 PIECE SCREWDRIVER SET

1810

PART NUMBER	DESCRIPTION	PRICE
TTTD910N	Slotted, Phillips and pozi heads	£84.02



11 PIECE EVA SCREWDRIVER SET

1810

PART NUMBER	DESCRIPTION	PRICE
TTTED911N	11 Piece EVA screwdriver set	£112.07



1000 VOLT VDE SCREWDRIVER SET 7 PIECE

1810

PART NUMBER	DESCRIPTION	PRICE
TTTTV907N	7 Piece screwdriver set	£54.70



4 PIECE ADJUSTABLE SET TPR HANDLE

1810

PART NUMBER	DESCRIPTION	PRICE
TTTTADJ04	4 Piece adjustable set	£133.75



5 PIECE POWER GRIP PLIERS SET

1810

PART NUMBER	DESCRIPTION	PRICE
TTTTVG05	5 Piece power grip pliers set	£95.50



PLIER SET

1810

PART NUMBER	DESCRIPTION	PRICE
TTTT440-T	4 Piece plier set	£106.97



2 PIECE POWER GRIP PLIER SET

1810

PART NUMBER	DESCRIPTION	PRICE
TT402	2 Piece power grip plier set	£44.50



MEGA BITE OFFSET SIDE CUTTERS TPR HANDLE

1810

PART NUMBER	SIZE	PRICE
TTMB442-6T	6"	£26.52
TTMB442-8T	8"	£31.37



COMBINATION PLIERS TPR HANDLE

1810

PART NUMBER	SIZE	PRICE
TTMB452-6T	6"	£29.20
TTMB452-8T	8"	£33.02



LONG NOSE PLIERS

1810

PART NUMBER	SIZE	PRICE
TTMB461-6T	6"	£25.37
TTMB461-8T	8"	£29.20



10" WATER PUMP PLIERS

1810

PART NUMBER	DESCRIPTION	PRICE
TTMB481-10T	Serrated jaws with pipe grip	£33.02



16" MEGA BITE GROOVE JOINT PLIERS VINYL COATED

1810

PART NUMBER	DESCRIPTION	PRICE
TTMB416	16" Groove joint pliers	£61.07



ADJUSTABLE SPANNER
PHOSPHATE FINISH

1810

PART NUMBER	SIZE	PRICE
TT4002	6"	£23.21
TT4003	8"	£24.61
TT4004	10"	£31.75
TT4005	12"	£43.22
TT4006	15"	£86.57



COMBINATION SPANNER
SATIN FINISH, OFFSET 15°

1810

PART NUMBER	SIZE	PRICE
TT600508-C	8 mm	£7.52
TT600509-C	9 mm	£7.91
TT600510-C	10 mm	£7.91
TT600511-C	11 mm	£7.91
TT600512-C	12 mm	£8.03
TT600513-C	13 mm	£8.42
TT600514-C	14 mm	£9.56
TT600515-C	15 mm	£10.07
TT600516-C	16 mm	£11.09
TT600517-C	17 mm	£11.86
TT600518-C	18 mm	£13.01
TT600519-C	19 mm	£14.03
TT600520-C	20 mm	£15.30
TT600521-C	21 mm	£15.68
TT600522-C	22 mm	£16.96
TT600524-C	24 mm	£20.91
TT600527-C	27 mm	£26.01
TT600530-C	30 mm	£29.33
TT600532-C	32 mm	£32.13



12 PIECE RATCHET SPANNER SET
8 – 19 MM

1810

PART NUMBER	DESCRIPTION	PRICE
TT6512RSMM	12 Piece ratchet spanner set	£253.73



12 PIECE METRIC COMBI SPANNER SET
8 – 19 MM

1810

PART NUMBER	DESCRIPTION	PRICE
TTTT1236	12 Piece metric combi spanner set	£68.72



7 PIECE METRIC COMBI SPANNER
20 – 32 MM

1810

PART NUMBER	DESCRIPTION	PRICE
TTTTX2032	7 Piece combi spanner set	£152.87



36 PIECE 1/4" DRIVE SOCKET SET

1810

PART NUMBER	DESCRIPTION	PRICE
TTT1436	36 Piece 1/4" drive socket set	£86.57



34 PIECE 3/8" DRIVE SOCKET SET
C/W FLEXI HEAD RATCHET

1810

PART NUMBER	DESCRIPTION	PRICE
TTT3834S	34 Piece 3/8" drive socket set	£117.94



3/8" DRIVE 39 PIECE SOCKET SET

1810

PART NUMBER	DESCRIPTION	PRICE
TTT3839	3/8" Drive 39 piece socket set	£140.12



21 PIECE 1/2" DRIVE SOCKET SET

1810

PART NUMBER	DESCRIPTION	PRICE
TTT1221	21 Piece 1/2" drive socket set	£178.37



127 PIECE SOCKET SET

1810

PART NUMBER	SIZES	PRICE
TTTM127	1/4", 3/8", 1/2"	£444.98

FEATURES

The AIRFORCE® MK4 tyre inflator is more reliable than ever and because of its clever 2 stage-valve, does not require a small plug filter in the inlet to preserve the valve life, as on competitor models, which will fail and clog up, slowing down the airflow – why have increased service times wasting valuable technician resources. At the same time, the two-stage valve significantly extends the life of the product, with tests showing it can cover 1 m cycles – 10 x the main competition.

The AIRFORCE® MK4 offers market leading inflation and deflation rates, so is fast to use. The 20% wider viewing screen and larger size of the print for the scale, together with a lighter and more user-friendly shape, make inflation as fast and accurate as it has even been - increasing safety, while also reducing tyre replacement cycle time and fatigue.

Meanwhile, the redesigned piston and seal configuration means increased accuracy – cycle tests now give over 400,000 inflation cycles, giving the AIRFORCE® MK4 a 60% longer life than the MK3 and significantly more than this over the competition, making the product the perfect partner for intensive and hard-working workshops and anywhere where no hassle and value for money are essential.

The “Made in Sheffield” AIRFORCE® MK4 tyre inflator is still available with the widest range of tyre valve connectors and hose connectors to suit all tyre inflation applications.



FEATURES AND BENEFITS

- New Viewing Window – Larger window gives 20% greater field of viewing
- Lighter Weight – Gauge body weighs 923 g, less work strain and easier for repetitive use
- Biomorphic Shape – Ergonomic, easier to use and less prone to damage when dropped
- New Valve Mechanism – Simplified 2 stage mechanism design prevents user having to “push” against full line pressure on deflate preventing fatigue
- New Piston & Seal Design – New design, less drag, reduced friction & less movement inertia means no internal corrosion, no sticking and no skewing of accuracy
- Accuracy Standards – Tested to over 400,000 cycles at 100% accuracy, meets EC 86/217 and compliant with EN12645:2014

SPECIFICATIONS

Operating temperature range	-25°C to 55°C (-13°F to +131°F)
Accuracy exceeds	Meets EC 86/217 Compliant with EN12645:2014
Reading accuracy	0.1 bar / 2 psi
Max. inlet pressure	13.8 bar / 200 psi
Inflation speed / flow rate	500 l/min / 18 CFM (@ 190 psi / 13 bar)



AIRFORCE® MK4 TYRE INFLATOR

8250

PART NUMBER	HOSE LENGTH	VALVE CONNECTION	PRICE
AFG4H03	0.53 m (21")	Twin hold-on	£118.32
AFG4H04	0.53 m (21")	Single clip-on	£116.37

FEATURES	BENEFITS
<ul style="list-style-type: none"> Aluminium body with protective rubber bumper Small 'compact' body Slimline biomorphic body shape Higher pressure range (4 - 250 psi) for multiple applications (including trucks) Permanently backlit in use, auto off after 25 seconds non use Large screen and clear digits IP54: can be used indoors and outdoors Individually tested and certified against national approved gauges Replaceable 2 x AAA batteries power unit (supplied) 3 units of calibration toggle as standard - psi, bar and kPa Registered design 	<ul style="list-style-type: none"> Extremely robust Long, accurate life expectancy Lightest metal bodied digital inflator on the market Easy to use with reduced fatigue Provides increased comfort for the user Fast to use and handle Versatile and flexible, saving time and money Easy to read in dark workshops or at night Easy and quick to read Increases accuracy and speed of use

SPECIFICATIONS	
Operating temperature range	-15°C to 55°C (+5°F to +131°F)
Accuracy exceeds	Compliant with BS EN 12645 : 2014
Reading accuracy	0.1 psi / 0.01 bar / 1 kPa
Max. inflation pressure	250 psi / 17.2 bar / 1723 kPa
Max. inlet pressure	260 psi / 18.0 bar / 1795 kPa
Inflation speed / flow rate	500 l/min / 18 CFM (@ 190 psi / 13 bar)
Calibration	4 – 250 psi / 0.3 – 17.2 bar / 30 – 1723 kPa



ACCURA® MK4 TYRE INFLATOR DIGITAL

8250

PART NUMBER	HOSE LENGTH	VALVE CONNECTION	PRICE
CADAC403	0.53 m (21")	Twin hold-on	£127.26
CADAC404	0.53 m (21")	Single clip-on	£127.26
CADAC405	1.8 m (6 ft)	Twin clip-on	£173.40
CADAC406	2.7 m (9 ft)	Twin clip-on	£176.04
CADAC4061	2.7 m (9 ft)	Single clip-on	£149.04

FEATURES	BENEFITS
<ul style="list-style-type: none"> Psi, bar kpa units of pressure selectable by button; last selection saved Long battery life with battery level indicator Replaceable battery Backlight Auto power off Hand trigger inflate and thumb controlled deflate Solid and robust construction 	<ul style="list-style-type: none"> Large, clear, easy to read LCD display with backlight Reliable accuracy (+/- 1 psi up to 60 psi, then 2 psi up to 150 psi) with individual testing and certification Easy and cost effective to use Low and simple maintenance Suitable for all applications, including tyreshop environments Powered by PCL inflation technology and experience



TYRE INFLATOR HAND HELD – DIGITAL

8250

PART NUMBER	HOSE LENGTH	TYRE VALVE CONNECTION	CALIBRATION	PRICE
DTI08	1.8 m	Euro connector	5 – 170 psi 0.34 – 12 bar 34 – 1200 kPa	£96.72

AIRFORCE II TYRE INFLATOR
<ul style="list-style-type: none"> Complies with EC directive 86/217/EEC & BS EN 12645: 1999 Calibrated to 0 – 170 psi & 0 – 12 bar Modern, lightweight and shock resistant construction Individually tested and certified Direct valve design increases inflation & deflation rates



TYRE INFLATOR AIRFORCE II

8250

PART NUMBER	HOSE LENGTH	VALVE CONNECTION	PRICE
CACAFG1H03	0.53 m (21")	Twin hold-on	£116.01
CACAFG1H06	2.7 m (9 ft)	Twin clip-on	£138.45
CACAFG1H08	1.8 m (6 ft)	Euro clip-on	£96.72

FEATURES

The new and improved Air Connector has been designed to enhance and bring the PCL connector range into the 21st century. Through extensive in-house and external testing, the new Air Connector has been proven to be as robust and reliable as ever.

Alloy/steel wheels have got bigger, with intricate designs making the valves more difficult to reach with the human hand.

The new range now consists of standard straight, as well as 90-degree connectors, for those difficult to reach valves, with both hose tail fitting and female threaded versions available.

Manufactured using the finest zinc alloy, aluminium and brass, the Air Connector boasts a vice like grip and easy operation, with a simple but effective thumb push button, which quickly releases the tyre valve, reducing non-value added time.

New

STRAIGHT SWIVEL AUTO CONNECTORS OPEN END – HOSE TAIL



8250

PART NUMBER	HOSE BORE SIZE	PRICE
CACH2K01	7.9 mm (5/16")	£15.30
CACH2H01	6.35 mm (1/4")	£15.30

New

ANGLED SWIVEL AUTO CONNECTORS OPEN END – HOSE TAIL



8250

PART NUMBER	HOSE BORE SIZE	PRICE
CACH4K01	7.9 mm (5/16")	£15.30
CACH4H01	6.35 mm (1/4")	£15.30

New

STRAIGHT SWIVEL AUTO CONNECTORS OPEN END



8250

PART NUMBER	INLET	PRICE
CACH2A01	Rp 1/4"	£15.30

New

ANGLED SWIVEL AUTO CONNECTORS OPEN END



8250

PART NUMBER	INLET	PRICE
CACH4A01	Rp 1/4"	£15.30

FEATURES

- Suitable for use in tyre shops
- Open and closed end available

TYRE VALVE EURO STYLE SINGLE CLIP-ON CONNECTORS CLOSED END



8250

PART NUMBER	INLET SIZE	PRICE
CACO8U73	Rc 1/4" female	£20.85

TYRE VALVE EURO STYLE SINGLE CLIP-ON CONNECTORS OPEN END



8250

PART NUMBER	INLET SIZE	PRICE
CACO8E72	4.75 mm (3/16")	£6.06
CACO8H72	6.35 mm (1/4")	£6.06
CACO8T73	Rc 1/4" female	£6.06

OTHER CONNECTORS

- Screw-on used in high pressure applications



TYRE VALVE CONNECTORS SCREW-ON – 8V1 OPEN END

8250

PART NUMBER	DESCRIPTION	PRICE
CACO9H03	For 6.35 mm bore hose	£30.42
CACO9P03	For 1/4" BSP female	£30.42

SCREW-ON – 12V1 OPEN END

CACO10H03	For 6.35 mm bore hose	£30.42
CACO10P03	For 1/4" BSP female	£30.42

FEATURES

- Rethreads the external part of the valve stem
- Rethreads the inside of the valve stem
- Remove the valve core
- Extract a damaged valve core



TYRE VALVE TOOL VERSATILE 4-IN-1 TOOL

8250

PART NUMBER	DESCRIPTION	PRICE
CACVT05	4-in-1 tyre valve tool	£3.93

FEATURES

- Suitable for tyre inflation of twin tyres
- Open end – black handles: used with PCL air line gauges, PCL wall gauges and PCL portable gauges. This connector has a pin, which unseats the tyre's valve when in use
- Closed end – red handles: used when air is supplied directly from main air line (ie. compressor or air receiver). A non-return valve unseats on connection to the tyre's valve, allowing air to flow into the tyre



8250

TWIN VALVE CONNECTORS OPEN END – BLACK

PART NUMBER	DESCRIPTION	PRICE
CACO1A03	Twin hold-on connector	£13.47
CACO3A03	Twin clip-on connector	£43.41

CLOSED END – RED*

CACO1B03	Twin hold-on connector	£13.47
CACO3B03	Twin clip-on connector	£43.41

* For closed end minimum 20 psi.

FEATURES

- Manufactured from solid, heavy duty alloy
- Stamped to show various calibrations, with easy to read figures



TYRE CHECK TWIN HOLD-ON

8250

PART NUMBER	DESCRIPTION	DIAL SIZE	PRICE
CACDPG1H03	0 – 170 psi in 2 psi units	63 mm	£48.30
	0 – 12 bar in 0.1 bar units		
CACDPG3H03	0 – 170 psi in 2 psi units	80 mm	£69.27
	0 – 12 bar in 0.1 bar units		

SINGLE HOLD-ON

CACDPG1H08	0 – 170 psi in 2 psi units	63 mm	£40.80
	0 – 12 bar in 0.1 bar units		
CACDPG3H08	0 – 170 psi in 2 psi units	80 mm	£63.96
	0 – 12 bar in 0.1 bar units		

TYRE INFLATOR

- Alloy body construction for durability
- Euro style tyre valve connector
- Calibration 10 – 210 psi / 0.7 – 15 bar
- Supplied blister packed with operating instructions



8250

TYRE INFLATOR ALLOY

PART NUMBER	VALVE CONNECTION	PRICE
CACADTG4	Euro style	£57.45



REPLACEMENT HOSE

8250

PART NUMBER	HOSE LENGTH	DESCRIPTION	PRICE
CACRHA2031	0.53 m (21")	End fittings only	£13.83
CACRHA2121	0.53 m (21")	Single clip-on	£25.05
CACRHA2122	0.53 m (21")	Twin hold-on	£29.55
CACRHA2129	0.53 m (21")	Euro style clip-on	£18.75
CACRHA2032	1.8 m (6 ft)	End fittings only	£23.61
CACRHA2034	1.8 m (6 ft)	Single clip-on	£30.72
CACRHA2126	1.8 m (6 ft)	Euro style clip-on	£27.69
CACRHA2033	2.7 m (9 ft)	End fittings only	£30.72
CACRHA2137	2.7 m (9 ft)	Single clip-on	£37.41

FEATURES

- Manufactured from solid, heavy duty alloy
- Stamped to show various calibrations with easy to read figures



TYRE PRESSURE GAUGE POCKET TYPE ANGLED HEAD

8250

PART NUMBER	DESCRIPTION	PRICE
CACTPG1H01	6 – 50 psi in 1 psi units, 0.5 – 3.4 bar in 0.1 bar units	£12.45

TREAD DEPTH GAUGE

- Accurate measurement of tread 1 – 26 mm in 1 mm increments (1.6 mm mark)
- Department of Transport accepted for MOT testing
- DVSA approved tyre tread depth gauge
- Complies with EC directive 89/459/EEC



**TREAD DEPTH GAUGE
1.6 MM MARKING**

8250

PART NUMBER	DESCRIPTION	PRICE
CACTDG16C05	Tread depth gauge	£5.70

DIGITAL TYRE TREAD DEPTH GAUGE

- Easy to read, large display
- 0 – 25 mm range in 0.01 mm increments
- Metric decimal inch and fraction inch (1/64") toggle
- Suitable for tyre tread depth or brake shoe and pad wear



**TYRE TREAD DEPTH GAUGE
DIGITAL**

8250

PART NUMBER	DESCRIPTION	PRICE
CACDTDG1D04	Digital tyre tread depth gauge	£19.47

AIR AND WATER GUN

- Strong jet; quickly removes dirt and grease without damaging the surface
- Water atomised by air pressure



AIR AND WATER GUN

8250

PART NUMBER	DESCRIPTION	PRICE
CACAWG03	Air and water gun	£45.72



METAL BLOW GUN

Manufactured from high quality die-cast alloy, giving the tool a long trouble free life.

KEY PRODUCT BENEFITS

- Robust and compact design
- Supplied with a conical and safety nozzle
- Display packed for convenience

PRODUCT SAFETY INFORMATION

Outlet pressure on blow guns should not exceed 2 bar (28 psi). It is therefore recommended that an in-line regulator is fitted to your air supply to ensure this.



**FEMALE BLOW GUN
WITH CONICAL
& SAFETY NOZZLE**

8250

PART NUMBER	DESCRIPTION	PRICE
CO-BG605	Metal Blow Gun	£8.96

METAL BLOW GUN CCESSORIES

PCL's threaded (1/8" inlet) easy-to-fit nozzles are interchangeable, catering for all blow gun applications.



SAFETY NOZZLE

8250

PART NUMBER	DESCRIPTION	PRICE
CBGN461	Safety nozzle	£3.15

WRENCH

FEATURES

- Twin hammer mechanism
- Composite housing
- One hand operation F/R switch
- Lightweight 1.2 kg
- Connectable with hose
- Low noise 83 dB(A)

SPECIFICATIONS AT 90 PSI (6.2 BAR)

Maximum torque	300 ft-lbs (407 Nm)
Working torque range	25 – 250 ft-lbs (34 – 338 Nm)



3/8" IMPACT WRENCH
11000 RPM

6160

PART NUMBER	FREE SPEED	AIR INLET	PRICE
MSC-JUP01200L	11000 rpm	1/4" BSP	£176.65

FEATURES

- Needle bearing in front head
- Thick wall for longer life
- Hardened ratchet housing
- Rotating air inlet
- Soft grip
- New regulator – easy to set rpm
- Low noise 79 dB(A)

SPECIFICATIONS AT 90 PSI (6.2 BAR)

Anvil size	3/8" (10 mm)
Maximum torque	50 ft-lbs (68 Nm)
Working torque range	10 – 50 ft-lbs (14 – 68 Nm)
Hose size ID	3/8" (10 mm)



3/8" RATCHET WRENCH
150 RPM

6160

PART NUMBER	FREE SPEED	AIR INLET	PRICE
MSC-JUP01300M	150 rpm	1/4" BSP	£79.08

FEATURES

- Needle bearing in front head
- Thick wall for longer life
- Hardened ratchet housing
- Rotating air inlet
- Soft grip
- New regulator – easy to set rpm
- Low noise 79 dB(A)

SPECIFICATIONS AT 90 PSI (6.2 BAR)

Maximum torque	50 ft-lbs (68 Nm)
Working torque range	10 – 50 ft-lbs (14 – 68 Nm)
Hose size ID	3/8" (10 mm)



1/2" RATCHET WRENCH
150 RPM

6160

PART NUMBER	FREE SPEED	AIR INLET	PRICE
MSC-JUP01400A	150 rpm	1/4" BSP	£79.08

FEATURES

- Twin hammer mechanism
- Aluminium housing
- Handle exhaust

SPECIFICATIONS AT 90 PSI (6.2 BAR)

Maximum torque	600 ft-lbs (813 Nm)
Working torque range	25 – 2400 ft-lbs (34 – 542 Nm)



1/2" HEAVY DUTY
IMPACT WRENCH
8000 RPM

6160

PART NUMBER	FREE SPEED	AIR INLET	PRICE
MSC-JUP01000J	8000 rpm	1/4" BSP	£85.84

SANDER

FEATURES

- Fast and precise, pistol style sander
- Energy efficient, robust design
- Compact tool, ideal for small jobs and difficult access areas

SPECIFICATIONS AT 90 PSI (6.2 BAR)

Pad size	3", 4" and 5"
Spindle thread	7/16" – 20T



5" HIGH SPEED SANDER WITH REGULATOR
14000 RPM

6160

PART NUMBER	FREE SPEED	PRICE
MSC-JUP00300C	14000 rpm	£42.87

FEATURES

- Composite motor housing
- Orbit diameter 5 mm
- Well balanced
- Low vibration
- Low noise 76 dB(A)

SPECIFICATIONS AT 90 PSI (6.2 BAR)

Pad size	6"
Spindle thread	5/16" – 24T



6" ORBITAL PALM SANDER
11000 RPM

6160

PART NUMBER	FREE SPEED	PRICE
MSC-JUP00200B	11000 rpm	£143.75

FEATURES

- Ergonomic handle for operator comfort
- Excellent general purpose sander
- Well balanced
- PSA sanding pad

SPECIFICATIONS AT 90 PSI (6.2 BAR)

Pad size	6"
Spindle thread	5/16" – 24T



DUAL ACTION SANDER
10000 RPM

6160

PART NUMBER	FREE SPEED	PRICE
MSC-JUP00100A	10000 rpm	£84.46

SCALER

SPECIFICATIONS

Blows per minute	4600
Air inlet	1/4" BSP



NEEDLE SCALER

6160

PART NUMBER	BLOWS PER MINUTE	PRICE
MSC-JUP01800E	4600	£108.99

DRILL

FEATURES

- Ergonomic handle design
- Built in comfort grip

SPECIFICATIONS AT 90 PSI (6.2 BAR)

Chuck size 3/8" (10 mm)



3/8" DRILL – REVERSIBLE

1650 RPM

6160

PART NUMBER	FREE SPEED	AIR INLET	PRICE
MSC-JUP01500B	1650 rpm	1/4" BSP	£68.58

FEATURES

- Ergonomic handle design
- Built in comfort grip

SPECIFICATIONS AT 90 PSI (6.2 BAR)

Chuck size 1/2" (13 mm)



1/2" HEAVY DUTY DRILL

350 RPM

6160

PART NUMBER	FREE SPEED	AIR INLET	PRICE
MSC-JUP01600C	350 rpm	1/4" BSP	£107.40

CUT OFF TOOL

FEATURES

- Soft grip
- Rotating air inlet
- 0.5 hp
- New regulator – easy to set rpm
- Low noise 79 dB(A)

SPECIFICATIONS AT 90 PSI (6.2 BAR)

Air inlet 1/4" bsp



3" CUTTING WHEEL

20000 RPM

6160

PART NUMBER	FREE SPEED	PRICE
MSC-JUP01700D	20000 rpm	£52.85

GRINDER

FEATURES

- Comfort cushioned grip
- New regulator, easy to set rpm
- Rotating air inlet
- Low noise 77 dB(A)

SPECIFICATIONS AT 90 PSI (6.2 BAR)

Collet size 1/4" (6 mm) or 1/8" (3 mm)
Hose size ID 3/8" (10 mm)



1/4" (6 MM) MINI DIE GRINDER

25000 RPM

6160

PART NUMBER	FREE SPEED	AIR INLET	PRICE
MSC-JUP00600H	25000 rpm	1/4" BSP	£69.65

FEATURES

- Comfort cushioned grip
- New regulator, easy to set rpm
- Rotating air inlet
- Low noise 77 dB(A)

SPECIFICATIONS AT 90 PSI (6.2 BAR)

Collet size 1/4" (6 mm) or 1/8" (3 mm)



1/4" 90° ANGLE DIE GRINDER

20000 RPM

6160

PART NUMBER	FREE SPEED	AIR INLET	PRICE
MSC-JUP00800K	20000 rpm	1/4" BSP	£82.33

SPECIFICATIONS AT 90 PSI (6.2 BAR)

Collet size 1/8" (3 mm)
Hose size 5 mm



MICRO DIE GRINDER

54000 RPM

6160

PART NUMBER	FREE SPEED	PRICE
MSC-JUP01100K	54000 rpm	£42.35

ANGLE GRINDER

FEATURES

- With standard handle
- Built in comfort grip
- Aluminium handle
- With governor
- Spindle lock
- Swivel guard adjustable in 9 seconds
- Accepts 0.8 mm – 6 mm disc
- Rear exhaust
- Low noise 83 dB(A)

SPECIFICATIONS AT 90 PSI (6.2 BAR)

Spindle size	5/8" – 11
--------------	-----------



4-1/2" ANGLE GRINDER
10000 RPM

6160

PART NUMBER	FREE SPEED	AIR INLET	PRICE
MSC-JUP00400D	10000 rpm	1/4" BSP	£168.76

GRINDER KIT

FEATURES

- Comfort cushioned
- New regulator – easy to set rpm
- Rotating air inlet
- Low noise 77 dB(A)

KIT INCLUDES

- 1/4" collet
- 1/8" collet
- 10 mounted points
- Blow moulded case

SPECIFICATIONS AT 90 PSI (6.2 BAR)

Collet size	1/4" (6 mm) or 1/8" (3 mm)
Hose size ID	3/8" (10 mm)



1/4" (6 MM) MINI DIE GRINDER KIT
25000 RPM

6160

PART NUMBER	FREE SPEED	AIR INLET	PRICE
MSC-JUP00700J	25000 rpm	1/4" BSP	£89.36

FEATURES

- Comfort cushioned
- New regulator – easy to set rpm
- Rotating air inlet
- Low noise 77 dB(A)

KIT INCLUDES

- 1/4" collet
- 1/8" collet
- 10 mounted points
- Blow moulded case

SPECIFICATIONS AT 90 PSI (6.2 BAR)

Collet size	1/4" (6 mm) or 1/8" (3 mm)
-------------	----------------------------



1/4" – 90° ANGLE DIE GRINDER KIT
20000 RPM

6160

PART NUMBER	FREE SPEED	AIR INLET	PRICE
MSC-JUP00500E	20000 rpm	1/4" BSP	£68.58

KIT INCLUDES

- Tool oil
- Lube reservoir
- Wrench
- Adaptor
- 10 Grinding wheels

SPECIFICATIONS AT 90 PSI (6.2 BAR)

Collet size	1/8" (3 mm)
Hose size	5 mm



MICRO DIE GRINDER KIT
54000 RPM

6160

PART NUMBER	FREE SPEED	PRICE
MSC-JUP00900L	54000 rpm	£62.71

DRUM EQUIPMENT



POLYETHYLENE DRUM TAPS
STAY OPEN OPERATION

8300

PART NUMBER	DESCRIPTION	PRICE
HY-DT3P	3/4"	£3.44
HY-DTJ	2"	£16.96



NICKEL PLATED BRASS
DRUM TAP
PADLOCK IN CLOSED POSITION

8300

PART NUMBER	DESCRIPTION	PRICE
HY-DT3H	3/4" BSP male thread	£21.72

NOZZLES AND HOSES

FEATURES / BENEFITS

- Provides quick and simple diesel dispensing from gravity tanks



HOSE, ALUMINIUM NOZZLE
& LOCKING GATE VALVE

8300

PART NUMBER	DESCRIPTION	PRICE
HY-GK4.LS	4 m, 25 mm bore delivery hose	£165.40
HY-GK6.LS	6 m, 25 mm bore delivery hose	£196.88

FEATURES / BENEFITS

- Can be used with pumps or gravity feed tanks
- Max pressure: 50 psi (3.5 bar)
- Max flow rate: 80 l/min



ALUMINIUM MANUAL NOZZLE

8300

PART NUMBER	DESCRIPTION	PRICE
HY-NOZ.S2	1" BSP female c/w swivel	£38.80

HAND PUMPS

FEATURES / BENEFITS

- 2 piece telescopic suction pipe
- Suitable for fuels & oils up to SAE 90
- Suitable for diesel (not to be used with petrol)



LEVER HAND PUMP

0.45 LITRES PER STROKE, 16 L/MIN

8300

PART NUMBER	DESCRIPTION	PRICE
HY-LEVER.S	2" BSP male thread	£41.88

FEATURES / BENEFITS

- Suitable for pumping most liquids: acids, alkalines, antifreeze, de-greaser, distilled water, diesel / biodiesel, light oils and solvents



SYPHON PUMPS

8300

PART NUMBER	DESCRIPTION	PRICE
HY-HPS25	For 5 – 25 litre containers	£4.76
HY-HPS205	For 205 litre containers	£19.88

FEATURES / BENEFITS

- Cast iron rotary action pump
- Steel suction pipe c/w mesh
- Suitable for most fuels / oils



ROTARY BARREL PUMP

8300

PART NUMBER	DESCRIPTION	PRICE
HY-MSS21	2" BSP male barrel adaptor	£59.20

FEATURES / BENEFITS

- Automatically shuts off the flow of fuel when vehicle tank is full
- Suitable for use with diesel
- Not approved for petrol



AUTOMATIC NOZZLES
1" SWIVEL

8300

PART NUMBER	DESCRIPTION	COLOUR	PRICE
HY-NOZA.60S	Economical – 60 l/min	Red	£108.68
HY-NOZA.X	Professional – 80 l/min	Black	£177.04

LUBRICATION COMPRESSION FITTINGS

FEATURES / BENEFITS

- Suitable for oil and grease applications

SPECIFICATIONS

Max. working pressure 100 bar

New



7900

LL STRAIGHT MALE STUD STEEL ZINC PLATED

PART NUMBER	THREAD	TUBE OD	PRICE
LU-1130	M6 x 1	4 mm	£4.58
LU-1140	M8 x 1	4 mm	£4.58
LU-1150	M10 x 1	4 mm	£4.58
LU-1160	1/8" BSP	4 mm	£4.58
LU-1170	M6 x 1	6 mm	£3.61
LU-1180	M8 x 1	6 mm	£3.61
LU-1190	M10 x 1	6 mm	£3.61
LU-1200	1/8" BSP	6 mm	£3.61
LU-1210	1/4" BSP	6 mm	£3.61

New



7900

LL STRAIGHT MALE STUD 304 STAINLESS STEEL

PART NUMBER	THREAD	TUBE OD	PRICE
LU-1220S/S	M6 x 1	6 mm	£22.84
LU-1230S/S	M8 x 1	6 mm	£22.84
LU-1240S/S	M10 x 1	6 mm	£22.84
LU-1250S/S	1/8" BSP	6 mm	£22.84

New



7900

LL COMPRESSION CONNECTOR STEEL ZINC PLATED

PART NUMBER	TUBE OD	TUBE OD	PRICE
LU-1260	4 mm	4 mm	£7.74
LU-1270	6 mm	6 mm	£6.31

New



7900

LL COMPRESSION CONNECTOR 304 STAINLESS STEEL

PART NUMBER	TUBE OD	TUBE OD	PRICE
LU-1290S/S	6 mm	6 mm	£28.51

New



7900

LL 90° ELBOW MALE STUD STEEL ZINC PLATED

PART NUMBER	THREAD	TUBE OD	PRICE
LU-1000	M6 x 1	4 mm	£7.52
LU-1010	M8 x 1	4 mm	£7.52
LU-1020	M10 x 1	4 mm	£7.52
LU-1030	1/8" BSP	4 mm	£7.52
LU-1040	M6 x 1	6 mm	£7.52
LU-1050	M8 x 1	6 mm	£7.52
LU-1060	M10 x 1	6 mm	£7.52
LU-1070	1/8" BSP	6 mm	£7.52

New



7900

LL 90° ELBOW MALE STUD 304 STAINLESS STEEL

PART NUMBER	THREAD	TUBE OD	PRICE
LU-1090S/S	M6 x 1	6 mm	£28.58
LU-1100S/S	M8 x 1	6 mm	£28.58
LU-1110S/S	M10 x 1	6 mm	£28.58
LU-1120S/S	1/8" BSP	6 mm	£28.58

New



7900

L 90° ELBOW MALE STUD STEEL ZINC PLATED

PART NUMBER	THREAD	TUBE OD	PRICE
LU-1080	1/4" BSP	6 mm	£16.50

New



7900

LL COMPRESSION NUT STEEL ZINC PLATED

PART NUMBER	TUBE OD	PRICE
LU-1300	4 mm	£0.79
LU-1310	6 mm	£0.79

New



7900

LL COMPRESSION NUT 304 STAINLESS STEEL

PART NUMBER	TUBE OD	PRICE
LU-1340S/S	6 mm	£8.16

New



7900

LL COMPRESSION RING STEEL ZINC PLATED

PART NUMBER	TUBE OD	PRICE
LU-1320	4 mm	£0.90
LU-1330	6 mm	£0.79

New



7900

LL COMPRESSION RING 304 STAINLESS STEEL

PART NUMBER	TUBE OD	PRICE
LU-1350S/S	6 mm	£5.41

PUSH-IN LUBRICATION FITTINGS

FEATURES / BENEFITS

- Suitable for oil and grease applications
- For use with nylon tube

SPECIFICATIONS

Max. working pressure	60 bar
Material	Brass, zinc plated

New



7900

PUSH-IN STRAIGHT BRASS ZINC PLATED

PART NUMBER	THREAD	TUBE OD	PRICE
LU-1355	1/4" UNF	4 mm	£6.95
LU-1360	M6 x 1	4 mm	£5.81
LU-1370	M8 x 1	4 mm	£5.81
LU-1380	M10 x 1	4 mm	£5.81
LU-1390	1/8" BSP	4 mm	£5.81
LU-1395	1/4" UNF	6 mm	£7.44
LU-1400	M6 x 1	6 mm	£5.81
LU-1410	M8 x 1	6 mm	£5.81
LU-1420	M10 x 1	6 mm	£5.81
LU-1430	1/8" BSP	6 mm	£5.81

New



7900

PUSH-IN CONNECTOR BRASS ZINC PLATED

PART NUMBER	TUBE OD	TUBE OD	PRICE
LU-1520	4 mm	4 mm	£12.23
LU-1530	6 mm	6 mm	£11.42

New



7900

PUSH-IN 90° ELBOW BRASS ZINC PLATED

PART NUMBER	THREAD	TUBE OD	PRICE
LU-1435	1/4" UNF	4 mm	£9.92
LU-1440	M6 x 1	4 mm	£9.24
LU-1450	M8 x 1	4 mm	£9.24
LU-1460	M10 x 1	4 mm	£9.24
LU-1470	1/8" BSP	6 mm	£9.24
LU-1480	M6 x 1	6 mm	£9.24
LU-1490	M8 x 1	6 mm	£9.24
LU-1500	M10 x 1	6 mm	£9.24
LU-1510	1/8" BSP	6 mm	£9.24

New



7900

PUSH-IN 90° SWIVEL ELBOW BRASS ZINC PLATED

PART NUMBER	THREAD	TUBE OD	PRICE
LU-1534	1/4" UNF	4 mm	£12.78
LU-1535	M6 x 1	4 mm	£12.78
LU-1536	M8 x 1	4 mm	£12.78
LU-1537	M10 x 1	4 mm	£12.78
LU-1538	1/4" UNF	6 mm	£12.78
LU-1540	M6 x 1	6 mm	£11.84
LU-1550	M8 x 1	6 mm	£11.84
LU-1560	M10 x 1	6 mm	£11.84
LU-1570	1/8" BSP	6 mm	£11.84

LUBRICATION ADAPTORS

FEATURES / BENEFITS

- Suitable for oil and grease applications

SPECIFICATIONS

Max. working pressure	100 bar
Material	Galvanised steel

New



7900

45° ELBOW ADAPTOR GALVANISED STEEL

PART NUMBER	MALE THREAD	FEMALE THREAD	PRICE
LU-1580	M8 x 1	M8 x 1	£5.81
LU-1590	M10 x 1	M10 x 1	£5.81
LU-1600	1/8" BSP	1/8" BSP	£5.81

New



7900

90° ELBOW ADAPTOR GALVANISED STEEL

PART NUMBER	MALE THREAD	FEMALE THREAD	PRICE
LU-1610	M6 x 1	M6 x 1	£6.05
LU-1620	M8 x 1	M8 x 1	£6.05
LU-1630	M10 x 1	M10 x 1	£6.05
LU-1640	1/8" BSP	1/8" BSP	£6.05

LUBRICATION ADAPTORS - CONTINUED

FEATURES / BENEFITS

- Suitable for oil and grease applications

SPECIFICATIONS

Max. working pressure	100 bar
Material	Steel zinc plated or brass (see table below)

New

STRAIGHT EXTENSION ADAPTOR STEEL ZINC PLATED



7900

New

90° BANJO ELBOW BRASS



7900

PART NUMBER	MALE THREAD	FEMALE THREAD	OVERALL LENGTH	PRICE
LU-1900	M6 x 1	M8 x 1	18 mm	£6.23
LU-1910	M8 x 1	M8 x 1	32 mm	£8.36
LU-1920	1/8" BSPT	1/8" BSPT	18 mm	£5.50
LU-1930	1/8" BSPT	1/8" BSPT	22 mm	£6.31
LU-1940	1/8" BSPT	1/8" BSPT	35 mm	£7.66
LU-1950	1/8" BSPT	1/8" BSPT	50 mm	£10.71

PART NUMBER	MALE THREAD	FEMALE THREAD	TUBE OD	PRICE
LU-1650	M8 x 1	M8 x 1	4 mm	£40.02
LU-1660	M10 x 1	M8 x 1	4 mm	£40.02
LU-1670	M6 x 1	M10 x 1	6 mm	£40.02
LU-1680	M8 x 1	M10 x 1	6 mm	£40.02
LU-1690	M10 x 1	M10 x 1	6 mm	£40.02
LU-1700	1/8" BSP	M10 x 1	6 mm	£40.02

HIGH PRESSURE HOSE AND FITTINGS

HOSE SPECIFICATIONS

Burst pressure	840 bar (12183 psi) @ 20°C
----------------	----------------------------

New

HIGH PRESSURE HOSE GREASE FILLED



7900

PART NUMBER	mm	mm	bar	PRICE
LU-1720	8.75	4.0	840	£164.78
LU-1765	11.30	6.3	840	£183.92

NON-GREASE FILLED

PART NUMBER	mm	mm	bar	PRICE
LU-1710	8.75	4.0	840	£116.16
LU-1730	11.30	6.3	840	£141.46

New

FERRULES STEEL ZINC PLATED



7900

PART NUMBER	HOSE OD	PRICE
LU-1800	8.75 mm	£5.85
LU-1810	11.30 mm	£12.63

New

FERRULES 316 STAINLESS STEEL



7900

PART NUMBER	HOSE OD	PRICE
LU-1820S/S	8.75 mm	£20.61

New

STRAIGHT INSERT STEEL ZINC PLATED



7900

PART NUMBER	STANDPIPE OD	HOSE OD	PRICE
LU-1740	4 mm	8.75 mm	£5.59
LU-1750	6 mm	8.75 mm	£4.99
LU-1770	8 mm	11.30 mm	£9.81

316 STAINLESS STEEL

PART NUMBER	STANDPIPE OD	HOSE OD	PRICE
LU-1760S/S	6 mm	8.75 mm	£20.66

New

45° INSERT STEEL ZINC PLATED



7900

PART NUMBER	STANDPIPE OD	HOSE OD	PRICE
LU-1785	6 mm	8.75 mm	£7.74

New

90° INSERT STEEL ZINC PLATED



7900

PART NUMBER	STANDPIPE OD	HOSE OD	PRICE
LU-1780	6 mm	8.75 mm	£11.97
LU-1790	8 mm	11.30 mm	£20.02

Tubing and hose symbol guide



GREASE CONTROL GUNS AND PUMPS

FEATURES / BENEFITS

- Max working pressure: above 300 bar
- To be used with 400 g (14 oz) grease cartridges or bulk grease



**LEVER ACTION GREASE PUMPS
500CC**

7800

PART NUMBER	DESCRIPTION	PRICE
s101200	Universal	£20.08
s100900	Heavy Duty	£34.00



**GREASE CONTROL GUN
C/W Z SWIVEL
RIGID STEM & 3 JAW CONNECTOR**

7800

PART NUMBER	DESCRIPTION	PRICE
s413080	Grease Gun c/w Z swivel	£114.83

MOBILE GREASE UNITS & CONNECTORS

FEATURES / BENEFITS

- PumpMaster 3 – 55:1 grease pump
- Carrying handle
- 2 m x ø1/4" high pressure hose
- High pressure, grease control gun with Z swivel
- Two wheeled trolley



AIR OPERATED

7800

PART NUMBER	DESCRIPTION	PRICE
s424152	Mobile air greaser 20 kg	£626.65

**HIGH PRESSURE GREASE
CONNECTORS
1/8" FEMALE BSP**



7800

PART NUMBER	DESCRIPTION	PRICE
s121011	4 Jaw ø15 mm x L 37 mm	£1.93

NIPPLES AND CONNECTORS



HYDRAULIC GREASE NIPPLES
STRAIGHT MALE

7800

PART NUMBER	DESCRIPTION	PRICE
s011600	1/8" BSP	£0.45
s011620	1/4" BSP	£1.50



POLYETHYLENE BODIED TAP

7800

PART NUMBER	DESCRIPTION	PRICE
s318100	3/4"	£1.58



HYDRAULIC GREASE NIPPLES
90° MALE

7800

PART NUMBER	DESCRIPTION	PRICE
s015600	1/8" BSP	£1.13
s015620	1/4" BSP	£2.25



METAL BODIED SELF
CLOSING TAP
LOCKABLE

7800

PART NUMBER	DESCRIPTION	PRICE
s318000	3/4"	£15.20



HYDRAULIC GREASE NIPPLES
45° MALE

7800

PART NUMBER	DESCRIPTION	PRICE
s013600	1/8" BSP	£0.90
s013620	1/4" BSP	£1.75



METAL BODIED
SELF CLOSING TAP

7800

PART NUMBER	DESCRIPTION	PRICE
s318001	2"	£18.48



POLYETHYLENE BODIED TAP

7800

PART NUMBER	DESCRIPTION	PRICE
s318200	2"	£12.85

Other sizes available upon request.

FLEXIBLE GREASE HOSE

FEATURES / BENEFITS

- Max working pressure: 400 bar
- Burst pressure: 900 bar



SINGLE STEEL BRAID RUBBER HOSE
1/8" BSPT MALE BOTH ENDS

7800

PART NUMBER	DESCRIPTION	PRICE
s136031	12" Hose	£4.81
s136041	18" Hose	£5.25

FEATURES / BENEFITS

- Max working pressure: 400 bar
- Burst pressure: 900 bar



NYLON BRAID POLYAMIDE COATED HOSE
1/8" BSPT MALE BOTH ENDS

7800

PART NUMBER	DESCRIPTION	PRICE
s130021	9" Hose	£2.13
s130031	12" Hose	£3.58
s130041	18" Hose	£4.40
s139061	24" Hose	£3.65

MEASURES

FLEXISPOUT MEASURES
MOULDED POLYETHYLENE



7800

PART NUMBER	DESCRIPTION	PRICE
s675001	1 Litre	£4.13
s675002	2 Litre	£5.25
s675003	3 Litre	£6.25
s675005	5 Litre	£7.75

GRADUATED MEASURING JUGS



7800

PART NUMBER	DESCRIPTION	PRICE
s675007	Sizes: 0.1, 0.25, 0.5, 1, 2, 3 & 5 litre	£35.75

FUNNELS

OFF-SET
WITH HANDLE AND BRASS FILTER



7800

PART NUMBER	DESCRIPTION	PRICE
s670017	160 mm	£5.45

INDUSTRIAL
300 MM



7800

PART NUMBER	DESCRIPTION	PRICE
s671030	With filter for diesel	£9.38
s671031	With filter for lubricants	£8.63

FLEXIBLE SPOUT
WITH FILTER



7800

PART NUMBER	DESCRIPTION	PRICE
s670019	190 mm	£4.50
s670023	230 mm	£6.10

OIL DRAIN PANS



PLASTIC DRAIN PAN

7800

PART NUMBER	DESCRIPTION	PRICE
s670006	6 litres capacity	£4.35



PLASTIC DRAIN PAN

7800

PART NUMBER	DESCRIPTION	PRICE
s670007	14 litres capacity	£19.38

MANUAL SYPHON PUMPS



SUCTION OPERATED
390 MM TUBE

7800

PART NUMBER	DESCRIPTION	PRICE
s300000	For drums up to 20 litres	£3.43



PISTON OPERATED
590 MM TUBE

7800

PART NUMBER	DESCRIPTION	PRICE
s300100	For drums up to 60 litres	£14.33



PISTON OPERATED
850 MM TUBE

7800

PART NUMBER	DESCRIPTION	PRICE
s300101	For drums up to 205 litres	£17.55

GEAR OIL PUMP

FEATURES / BENEFITS

- For the dispensing of gear oil
- 1500 mm flexible hose, shut-off valve & dispensing nozzle for drums up to 25 litres



TROLLEY

7800

PART NUMBER	DESCRIPTION	PRICE
s430800	For drums up to 25 litres	£70.25

GEAR OIL PUMP

(Drum converting adaptor may be required)

7800

PART NUMBER	DESCRIPTION	PRICE
s320390209	C/W 2" BSP adaptor	£38.63

Trolley not included

LEVER PUMPS

FEATURES / BENEFITS

- To fit 2" BSP or 2" NPT threads
- Adjustable locking nut
- Unique design incorporates a toggle mechanism in the handle linkage to correct piston shaft geometry to create smooth operation



PLASTIC LEVER ACTION PUMPS
500 CC / STROKE

7800

PART NUMBER	DESCRIPTION	PRICE
s300007	Fitted with Viton™ seal	£34.43
s300006	Fitted with EPDM seal	£34.43

FEATURES / BENEFITS

- High quality pump for transfer of all types of light lubricants as well as other non-corrosive fluids from 50 to 205 litre drums



METAL LEVER ACTION PUMP

7800

PART NUMBER	DESCRIPTION	PRICE
s304500	0.45 ltrs / stroke delivery	£34.00

LIFT PUMPS

FEATURES / BENEFITS

- PTFE seals to offer maximum chemical resistance
- To fit 2" BSP or 2" NPT threads
- Plastic sleeved, steel piston rods, so that only compatible material comes into contact with the fluid being handled



POLYPROPYLENE LIFT PUMPS
500CC / STROKE

7800

PART NUMBER	DESCRIPTION	PRICE
s300200	500 mm downtube	£25.45
s300201	1000 mm downtube	£28.23

FEATURES / BENEFITS

- PTFE seals to offer maximum chemical resistance
- To fit 2" BSP or 2" NPT threads
- Plastic sleeved, steel piston rods, so that only compatible material comes into contact with the fluid being handled



NYLON LIFT PUMPS
500CC / STROKE

7800

PART NUMBER	DESCRIPTION	PRICE
s300300	500 mm downtube	£36.75
s300301	1000 mm downtube	£40.70

DRUM CONVERTING ADAPTORS

CONVERTING ADAPTORS



7800

PART NUMBER	DESCRIPTION	PRICE
s317911	2" BSP to 2" Trisure	£4.38

CONVERTING ADAPTORS



7800

PART NUMBER	DESCRIPTION	PRICE
s317912	2" BSP to 2" Mauser	£4.38

CONVERTING ADAPTORS



7800

PART NUMBER	DESCRIPTION	PRICE
s317913	2" BSP to Din 61	£4.18

CONVERTING ADAPTORS



7800

PART NUMBER	DESCRIPTION	PRICE
s317914	2" BSP to 59 mm Tournex	£4.18

CONVERTING ADAPTORS



7800

PART NUMBER	DESCRIPTION	PRICE
s317915	2" BSP to Din 51	£4.18

CONVERTING ADAPTORS



7800

PART NUMBER	DESCRIPTION	PRICE
s317916	2" BSP to 63 mm	£4.30

CONVERTING ADAPTORS



7800

PART NUMBER	DESCRIPTION	PRICE
s317917	2" BSP to Din 71	£4.38

METAL ROTARY PUMPS

FEATURES / BENEFITS

- Ideal for heavy use
- 2" bung adaptor for 50 to 205 litre drums
- 0.3 litres / revolution delivery



ECONOMY ROTARY PUMP

7800

PART NUMBER	DESCRIPTION	PRICE
s308099	For 205 litre drums	£43.58

FEATURES

Heavy duty lever grease gun, fitted with unique 'Clear Vision' transparent barrel for punishing every day use. Generates 10,000 psi (690 bar) pressure that can help to clear blocked or damaged grease nipples. Not suitable for Ester based synthetic grease and fluids.



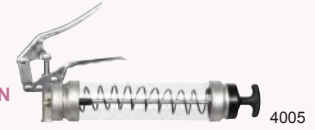
**LEVER GREASE GUN
'CLEAR VISION'**

4005

PART NUMBER	DESCRIPTION	PRICE
GR-ZLGGC	Lever grease gun 'clear vision'	£77.44

FEATURES

Single hand operation grease gun, fitted with the unique 'Clear Vision' transparent barrel. Generates 5,000 psi (345 bar) pressure. Not suitable for Ester based synthetic grease and fluids.



**PISTOL GRIP GREASE GUN
'CLEAR VISION'**

4005

PART NUMBER	DESCRIPTION	PRICE
GR-ZPGGC	Pistol grip grease gun 'clear vision'	£75.02

FEATURES

General purpose, side lever grease gun with a drop resistant, steel head construction. Accepts standard 400 g cartridge but can also be bulk or suction filled.

- Delivers up to 6,000 psi / 413 bar grease pressure
- Complete with 6" (150 mm) steel extension & 4 jaw coupler
- Air release through loader fitting
- Two hand operation with soft rubber grip on lever handle for comfortable operation



LEVER GREASE GUN

4005

PART NUMBER	DESCRIPTION	PRICE
GR-ZLGG	Lever grease gun	£19.60

FEATURES

Heavy duty lever grease gun for punishing every day use. Generates 10,000 psi (690 bar) pressure that can help to clear blocked or damaged grease nipples.



**HEAVY DUTY LEVER
GREASE GUN**

4005

PART NUMBER	DESCRIPTION	PRICE
GR-ZG1	Heavy duty lever grease gun	£25.38

FEATURES

- Mini pistol grip grease gun with convenient pull type mechanism
- Single hand operation
- Capacity: 3 oz (85 g) grease cartridge or 120 cc bulk fill
- Maximum pressure 3500 psi (240 bar)
- Delivers 0.40 g / stroke



MINI PISTOL GRIP GREASE GUN

4005

PART NUMBER	DESCRIPTION	PRICE
GR-ZG16	Mini pistol grip grease gun	£17.18

FEATURES

Ergonomic, one hand operation grease gun with unique variable stroke mechanism for both high volume and high pressure applications. High volume for faster greasing and high pressure for use in cold weather conditions. Generates 7,000 psi (480 bar) pressure.



PREMIUM PISTOL GRIP GREASE GUN

4005

PART NUMBER	DESCRIPTION	PRICE
GR-ZG55	Premium pistol grip grease gun	£34.56

FEATURES

- Heavy duty oil gun, handles flowable greases and light oils without leakage
- Develops 10,000 psi / 690 bar
- Variable stroke feature built in for use in confined areas
- Grease gun follower, designed for use with both oils and grease
- Refillable options: 400 g cartridge, bulk fill, suction and hand fill
- Complete with 6" (150 mm) steel extension and professional 4 jaw coupling with ball check



LEVER OIL GUN 4005

PART NUMBER	DESCRIPTION	PRICE
GR-ZG19RB	Heavy duty oil gun	£27.78

FEATURES

- Double lever grease gun for quick and effortless high pressure greasing applications. Suitable for some screw in grease cartridges. Develops 7,500 psi / 517 bar. Delivers up to 0.8 g / stroke. Protective cap for hose storage when not in use, prevents contamination at the hose end. Minimal wearing parts for longer life. Comes complete with 12" high pressure flexible hose with a 4 jaw coupler.



DOUBLE LEVER GREASE GUN 4005

PART NUMBER	DESCRIPTION	PRICE
GR-ZG83FHPB	Double lever grease gun	£41.42
GR-ZADPHDG83MTO	Lube Shuttle to Fuchs adapter	£4.20

FEATURES

- The J1782801 is a durable and lightweight oil control valve with rigid nozzle and manual tip, typical fluids handled are motor oil, gear oil, transmission fluids, etc.
- Inlet connections: 1/2" swivel female
- Max pressure: 50 bar / 750 psi
- Temperature: Max 60°C Spout



OIL CONTROL GUN C/W RIGID EXTENSION 4005

PART NUMBER	DESCRIPTION	PRICE
GR-J1782801	Oil control gun c/w rigid extension	£66.10

FEATURES

- The J1782802 flexible oil control gun is a durable and lightweight oil control valve with flexible nozzle and automatic tip, typical fluids handled are motor oil, gear oil, transmission fluids, etc.
- Inlet connections: 1/2" swivel female
- Max pressure: 50 bar / 750 psi
- Temperature: Max 60°C Spout



OIL CONTROL GUN C/W FLEXIBLE EXTENSION 4005

PART NUMBER	DESCRIPTION	PRICE
GR-J1782802	Oil control gun c/w flexible extension	£67.32

FEATURES

- The GR-J18163536 digital oil meter is durable and accurate, and is supplied with both rigid and flexible nozzles. Typical fluids handled are motor oil, gear oil, transmission fluids, etc. Resettable total for daily, weekly and lifetime dispense reports with a 5-digit easy to read LCD display powered by 3V battery.
- Inlet connection: 1/2" female
- Fluid range: 1 - 35 l/min; 0.3 - 9.2 gpm
- Low battery indicator
- Pressure range: 0.5 - 50 bar / 7 - 750 psi
- Temperature - Max 60°C
- Accuracy: +/- 0.5 %
- Viscosity: 8 - 5000 mPas
- Spout: Supplied with both rigid and flexible nozzles
- Power source: 1*3V CR2 battery
- Weight: 1.4 kg / 3lb
- Rubber protection cover



DIGITAL OIL CONTROL GUN 4005

PART NUMBER	DESCRIPTION	PRICE
GR-J18163536	Digital oil control gun	£162.00



FEATURES

- Pistol lever grease gun for quick, effortless high pressure greasing applications
- Designed to work with 400 g Spin-On grease cartridge
- Vacuum technology ensures full utilisation of grease in the cartridge
- No air bleeding required
- Robust, high tolerance aluminium, die cast head
- Minimal wearing parts for longer life
- Non-slip, textured powder coated finish for extended service life, which outlasts zinc plated grease guns.
- Develops up to 5,000 psi / 345 bar
- Complete with 6" steel extension and professional 4 jaw coupler with ball check



SPIN ON PISTOL GRIP GREASE GUN

4005

PART NUMBER	DESCRIPTION	PRICE
GR-ZG49PRB	Pistol grip grease gun	£30.15

FEATURES

- Lever grease gun for quick, effortless high pressure greasing applications
- Designed to work with 400 g Spin-On grease cartridge
- Vacuum technology ensures full utilisation of grease in the cartridge
- No air bleeding required
- Robust, high tolerance aluminium, die cast head
- Minimal wearing parts for longer life
- Non-slip, textured powder coated finish for extended service life, which outlasts zinc plated grease guns
- Complete with a 12" flexible hose and professional 4 jaw coupler with ball check



SPIN ON LEVER GREASE GUN

4005

PART NUMBER	DESCRIPTION	PRICE
GR-ZG49RB	Lever grease gun	£23.02

FEATURES

- An easy and portable, high pressure, hand operated grease pump. Provides high pressure greasing, where an air supply is not available. Comes complete with lift handle, drum cover, follower plate, 48" (1220 mm) grease hose, fitted with professional 4 jaw coupler.
- Delivery pressure 3,500 psi / 240 bar
 - Delivers 1.5 g / stroke



New Additions

HIGH PRESSURE GREASE PUMP

4005

PART NUMBER	FOR USE WITH	PRICE
GR-ZHPGP	12.5 kg grease kegs	£108.71
GR-ZGFPH03PRO	18 – 20 kg grease kegs	£119.95

FEATURES

- Grease filler pump for bulk filling or transferring to grease guns from grease kegs.
- Kit includes zinc plated pump with zinc die cast pump head and cast aluminium adjusting flange, drum cover, follower plate and female loading fitting. Delivers 28 g (1 oz) per stroke



New Additions

GREASE FILLER PUMP

4005

PART NUMBER	FOR USE WITH	PRICE
GR-ZGFP02	12.5 kg grease kegs	£57.31
GR-ZGFP04PROUNI	50 kg grease kegs	£96.13

FEATURES

The Groz quick disconnect grease coupler is designed for quick and convenient disengagement of the coupler from the grease / zerk fittings under pressure. To engage the coupler, simply press the thumb lever and slide the coupler jaws onto the fitting. Once greasing is completed, simply press the thumb lever again to disconnect the coupler from the fitting. Suitable for pressures up to 8000 psi / 550 bar. The coupler will not move, thus allowing a hands free operation. Suitable for battery, air and manual operated grease guns. slimline diameter 17 mm. Unique 6 point contact design. Thread: 1/8" BSPT female.



New

QUICK DISCONNECT GREASE COUPLER

4005

PART NUMBER	DESCRIPTION	PRICE
GR-ZHC21B	Quick disconnect grease coupler	£31.01



BATTERY OPERATED GREASING EQUIPMENT
FEATURES

- Battery operated grease gun
- Professional 18 volt cordless grease gun
- High volume, low pressure: 345 bar (5000 psi) max pressure, 250 g/min
- Low volume, high pressure: 690 bar (10,000 psi) max pressure, 55 g/min
- Built-in LED light to motor overload protection
- Air pocket valve: relieves air pockets and improves priming
- Moulded carry case for storage and durable protection
- 2 x Lithium-ion 18 volt battery packs and 1 hour fast charger

SPECIFICATIONS

Battery	Rechargeable 18v 1.500 Mah
Working pressure	Up to 480 bar (7000 psi)
3-Way loading	Cartridge, filler pump & bulk
Capacity	400 g (14 oz) cartridge



4005

BATTERY OPERATED GREASE GUN

PART NUMBER	DESCRIPTION	PRICE
GR-ZRB1988	Battery operated grease gun	£352.99

FEATURES

- Professional 18 volt cordless grease gun
- High volume, low pressure: 345 bar (5000 psi) max pressure, 250 g/min
- Low volume, high pressure: 690 bar (10,000 psi) max pressure, 55 g/min
- Built-in LED light to motor overload protection
- Air pocket valve: relieves air pockets and improves priming
- Moulded carry case for storage and durable protection
- 2 x NI-CD 18 volt battery packs and 1 hour fast charger

SPECIFICATIONS

Battery	Rechargeable 18v 1.500 Mah
Working pressure	Up to 480 bar (7000 psi)
3-Way loading	Cartridge, filler pump & bulk
Capacity	400 g (14 oz) cartridge



4005

BATTERY OPERATED GREASE GUN

PART NUMBER	DESCRIPTION	PRICE
GR-ZRB1958	Battery operated grease gun	£237.59

AIR OPERATED GREASING EQUIPMENT
FEATURES

Heavy duty, grease control valve with built-in boost mechanism. Pressure boost achieved through repeated actuation of the pistol trigger. Boosts line pressure from 6,000 psi (400 bar) to 10,000 psi (690 bar).



4005

GREASE CONTROL VALVE BOOSTER

PART NUMBER	DESCRIPTION	PRICE
GR-ZBG	Grease control valve booster	£52.69

FEATURES

Pistol grip, air operated grease gun with continuous flow suitable for 400 g cartridges, bulk or manual fill. Ideal for use in factory maintenance, agricultural applications, fleet service or for use on trucks when connected to the vehicle's air brake compressor(s).



4005

AIR OPERATED POWER PISTOL

PART NUMBER	DESCRIPTION	PRICE
GR-ZAGG	Air operated power pistol	£69.19

FEATURES

These air operated grease pumps dispense grease at pressures up to 50 times the air inlet pressure, offering a guaranteed performance and hassle free operation. The kit includes pump, lid, follower plate, hose, 'Z' swivel and grease delivery gun. Drum trolley also available: Product code: GR-ZTRL60 (Adjustable drum trolley).

SPECIFICATIONS

Working Air Pressure	2 – 10 bar (30 to 150 psi)
Maximum Air Pressure	10 bar (150 psi)
Maximum Outlet Pressure	500 bar (7500 psi)
Air Inlet Connection	1/4" BSP (F)
Pump Outlet Connection	1/4" BSP (F)
Air Consumption	230 ltr / min (61 gpm)
Grease Output (NLGI No.2)	1.10 kg / min (2.42 lbs / min)
Noise Level	81 db



4005

AIR OPERATED GREASE PUMP KIT
50:1 12.5 KG

PART NUMBER	FOR USE WITH	PRICE
GR-ZGPK125	Standard UK size 12.5 kg kegs	£477.61

50:1 50 KG

GR-ZGPK50	Standard UK size 50 kg kegs	£510.54
-----------	-----------------------------	---------

50:1 180 KG

GR-ZGPK180	Standard UK size 180 kg kegs	£708.17
------------	------------------------------	---------

FEATURES

- Built-in high accuracy, digital grease meter for dispensing exact amounts of grease
- Provides continuous grease flow (0.1 to 2.5 kg / minute)
- Steel construction provides durability and longevity
- Oval gear mechanism

SPECIFICATIONS

Accuracy	+/- 3%
Max. working pressure	8000 psi (550 bar)
Thread inlet/outlet	1/8" BSPT



4005

DIGITAL IN-LINE GREASE METER

PART NUMBER	DESCRIPTION	PRICE
GR-ZDGM1	Digital in-line grease meter	£543.05

SPECIFICATIONS

Working Air Pressure	2 – 10 bar (30 to 150 psi)
Maximum Air Pressure	10 bar (150 psi)
Air Inlet Connection	1/4" BSP (F)
Pump Outlet Connection	1/2" BSP (F)
Air Consumption	230 l/min (61 gpm)
Noise Level	81 db

FEATURES

- Stainless Steel 3:1 air operated drum pump. Ideal for transferring low to medium viscosity fluids, such as antifreeze, windshield washer fluids and water soluble lubricants, etc.
- Single acting pump with discharge up to 14 l/min (3.70 gpm)
- Suitable for oils up to SAE130
- Air consumption 230 l/min (61 gpm)
- ZAOP3DSS pump complete with suction tube for 205 litre (55 gal) drums and bung adaptor.



4005

AIR OPERATED STAINLESS STEEL OIL DISPENSING DRUM PUMP 3:1 RATIO

PART NUMBER	DESCRIPTION	PRICE
GR-ZAOP3DSS	Air operated stainless steel oil dispensing pump	£528.53

FEATURES

Groz industrial oil dispensing pumps offer guaranteed performance and hassle free operation. These pumps are designed to work in tough conditions and are ideal for use in industry, workshop, agriculture and construction or as part of a mobile oil system. Stub pumps are supplied with a non-return valve threaded 1" (F) for use on the bottom of the suction tube. Drum pumps have a built in strainer at the pump inlet to keep out any contaminants.

- Ideal for use with medium to high viscosity oils (up to SAE130) for transferring over short distances (up to 30 m).
- Single acting pump with discharge up to 14 l/min (3.70 gpm)
- Suitable for oils up to SAE130
- Air consumption 230 l/min (61 gpm)



4005

AIR OPERATED OIL DISPENSING STUB PUMP 3:1 RATIO

PART NUMBER	DESCRIPTION	PRICE
GR-ZAOP3S	Air operated 3:1 oil ratio stub pump	£289.84

FEATURES

Groz industrial oil dispensing pumps offer guaranteed performance and hassle free operation. These pumps are designed to work in tough conditions and are ideal for use in industry, workshop, agriculture and construction or as part of a mobile oil system. Stub pumps are supplied with a non-return valve threaded 1" (F) for use on the bottom of the suction tube. Drum pumps have a built in strainer at the pump inlet to keep out any contaminants.

1:1 transfer pumps are primarily used to quickly transfer oils from large drums to smaller containers over a short distance.

- Double acting operation with discharge up to 40 l/min (10.58 gpm)
- Air consumption: 270 l/min (71.5 gpm)



4005

AIR OPERATED OIL DISPENSING STUB PUMP 1:1 RATIO

PART NUMBER	DESCRIPTION	PRICE
GR-ZAOP1S	Air operated 1:1 oil ratio stub pump	£329.41

FEATURES

Groz industrial oil dispensing pumps offer guaranteed performance and hassle free operation. These pumps are designed to work in tough conditions and are ideal for use in industry, workshop, agriculture and construction or as part of a mobile oil system. 1:1 transfer pumps are primarily used to quickly transfer oils from large drums to smaller containers over a short distance.

- Double acting operation with discharge up to 40 l/min (10.58 gpm)
- Air consumption: 270 l/min (71.5 gpm)



4005

AIR OPERATED OIL DISPENSING DRUM PUMP 1:1 RATIO

PART NUMBER	DESCRIPTION	PRICE
GR-ZAOP1D	Air operated 1:1 oil ration drum pump	£352.92

FEATURES

Groz industrial oil dispensing pumps offer guaranteed performance and hassle free operation. These pumps are designed to work in tough conditions and are ideal for use in industry, workshop, agriculture and construction or as part of a mobile oil system. Ideal for use with medium to high viscosity oils (up to SAE130) for transferring over short distances (up to 30 m).

- Single acting pump with discharge up to 14 l/min (3.70 gpm)
- Suitable for oils up to SAE130
- Air consumption 230 l/min (61 gpm)
- ZAOP3D pump complete with suction tube for 205 litre (55 gal) drums & bung adaptor.



4005

AIR OPERATED OIL DISPENSING DRUM PUMP 3:1 RATIO

PART NUMBER	DESCRIPTION	PRICE
GR-ZAOP3D	Air operated 3:1 ratio drum pump	£310.53

FEATURES

Groz industrial oil dispensing pumps offer guaranteed performance and hassle free operation. These pumps are designed to work in tough conditions and are ideal for use in industry, workshop, agriculture and construction or as part of a mobile oil system. Stub pumps are supplied with a non-return valve threaded 1" (F) for use on the bottom of the suction tube. Drum pumps have a built in strainer at the pump inlet to keep out any contaminants.

- Ideal for use with high viscosity oils (up to SAE240) for transferring over short distances (up to 50 m)
- Double acting operation with discharge up to 18 l/min (4.76 gpm)
- Suitable for oils up to SAE240
- Air consumption 250 l/min (66 gpm)
- ZAOP5S stub pump with bung adaptor

SPECIFICATIONS

Working Air Pressure	2 – 10 bar (30 – 150 psi)
Maximum Air Pressure	10 bar (150 psi)
Air Inlet Connection	1/4" BSP (F)
Pump Outlet Connection	1/2" BSP (F)
Air Consumption	230 l/min (61 gpm)
Noise Level	81 db



AIR OPERATED OIL DISPENSING STUB PUMP
5:1 RATIO

4005

PART NUMBER	DESCRIPTION	PRICE
GR-ZAOP5S	Air operated 5:1 oil ratio stub pump	£345.84

FEATURES

Groz industrial oil dispensing pumps offer guaranteed performance and hassle free operation. These pumps are designed to work in tough conditions and are ideal for use in industry, workshop, agriculture and construction or as part of a mobile oil system. Ideal for use with high viscosity oils (up to SAE240) for transferring over short and long distances (up to 50 m). Mostly used with hose reels and centralised distribution systems.

- Double acting operation with discharge up to 18 l/min (4.76 gpm)
- Suitable for oils up to SAE240
- Air consumption 250 l/min (66 gpm)
- ZAOP5D pump complete with suction tube for 205 litre (55 gal) drums & bung adaptor.

SPECIFICATIONS

Working Air Pressure	2 – 10 bar (30 – 150 psi)
Maximum Air Pressure	10 bar (150 psi)
Air Inlet Connection	1/4" BSP (F)
Pump Outlet Connection	1/2" BSP (F)
Air Consumption	230 l/min (61 gpm)
Noise Level	81 db



AIR OPERATED OIL DISPENSING DRUM PUMP
5:1 RATIO

4005

PART NUMBER	DESCRIPTION	PRICE
GR-ZAOP5D	Air operated 5:1 oil ratio drum pump	£370.54

HEAVY DUTY PUMPS

FEATURES

- 3:1 Air operated oil pump for high volume and longer distance transfer applications
- Easy to operate and maintain (air motor service kit available (J17130301KIT))
- Corrosion resistant design
- Suction tube kit available (JET20670) for use with 205 litre barrels

SPECIFICATIONS

Ratio	3:1
Working pressure	5 – 12 bar (70 – 180 psi)
Air consumption	At 8 bar 600 l/min
Suction tube diameter	54 mm / 2.1"
Oil outlet connection	3/4" BSP (F)
Max. free flow rate	45 l/min (12 gallon)



HEAVY DUTY 3:1 OIL TRANSFER PUMP

4005

PART NUMBER	DESCRIPTION	PRICE
GR-J17130301	Heavy duty 3:1 oil transfer pump	£439.49

FEATURES

- 5:1 Air operated oil pump for high volume and longer distance transfer applications
- Easy to operate and maintain (air motor service kit available (GRJ17130501KIT))
- Corrosion resistant design
- Suction tube kit available (JET20670) for use with 205 litre barrels

SPECIFICATIONS

Ratio	5:1
Working pressure	5 – 12 bar (70 – 180 psi)
Air consumption	At 8 bar 600 l/min
Suction tube diameter	54 mm / 2.1"
Oil outlet connection	3/4" BSP (F)
Max. free flow rate	40 l/min (11 gallon)



HEAVY DUTY 5:1 OIL TRANSFER PUMP

4005

PART NUMBER	DESCRIPTION	PRICE
GR-J17130501	Heavy duty 5:1 oil transfer pump	£469.81

FEATURES

- Versatile hand lift pump for 20 / 25 litre drums
- Supplied with seven interchangeable bung adaptors and suction tube extension
- Delivers 1 litre (1 quart) / 18 strokes
- Non kink discharge hose fitted with non drip nozzle

Do not use with water based and other corrosive media



4005

EZEE FLO PUMP

PART NUMBER	DESCRIPTION	PRICE
GR-ZEFZ2	Ezee flo pump	£39.96

FEATURES

- Geared rotary barrel pump 3:1 ratio, suitable for volume fuel dispensing
- Die cast aluminium construction with sintered gear driven die cast zinc rotor vanes
- Pump fitted with easy to clean wire mesh screen
- Discharge through 1.8 m delivery hose with metal nozzle
- 3pc threaded suction tube for use with 15 gallon (50 litre) – 55 gallon (205 litre) drums
- Wetted components aluminium, zinc, steel, NBR, PVC and nitrile
- Recommended use: diesel fuel, gasoline, kerosene and lubricating oils up to SAE30

Do not use with corrosive liquids, solvents, acids, alkalis, etc



4005

ROTARY BOOSTER PUMP

PART NUMBER	DESCRIPTION	PRICE
GR-ZRB3	Rotary booster pump	£205.70

FEATURES

- Digital oil meter with 5 pre-settable totals for frequently required volumes
- Supplied with both rigid & flexible nozzles
- 5 digit LCD display
- Shock resistant

SPECIFICATIONS

Inlet connection	1/2" BSP
Flow range	1 – 35 l/min
Accuracy	+/- 0.5%
Max. temperature	60°C
Power source	4 x AA size 1.5v
Pressure range	0.5 – 70 bar (7 – 1000 psi)
Weight	1.5 kgs / 3.3 lbs



4005

DIGITAL PRESET OIL METER

PART NUMBER	DESCRIPTION	PRICE
GR-J18133512	Digital preset oil meter	£302.40

FEATURES

- Robust transfer gun, designed for use with gear oils to get them both into and out of gearboxes, transfer cases and differentials
- Steel barrel with powder coated finish. Complete with 12" (300 mm) flexible vinyl hose
- No priming required
- Suitable for use with non corrosive liquids
- Capacity 500 ml (16 oz)



4005

SUCTION GUN

PART NUMBER	DESCRIPTION	PRICE
GR-ZSG11	Suction gun	£14.12

FEATURES

Mobile pneumatic oil dispenser, designed for filling & topping up reservoirs. Pneumatic oil dispenser is equipped with a level gauge, delivery gun and flexible end.

- Works autonomously without the requirement of continuous connection to air supply
- Suitable for dispensing automotive engine & gearbox oils

SPECIFICATIONS

Tank capacity	30 litre / 8 gallon
Air pressure	7 – 8 bar / 100 – 114 psi
Maximum pressure	10 bar / 145 psi
Flex hose	2000 mm / 79"
Weight	15 kgs / 33 lbs



4005

MOBILE PNEUMATIC OIL DISPENSER 30 LTR

PART NUMBER	DESCRIPTION	PRICE
GR-JPOD030	Mobile pneumatic oil dispenser	£224.02

FEATURES

Mobile pneumatic oil dispenser, designed for filling & topping up reservoirs. Pneumatic oil dispenser is equipped with a level gauge, delivery gun and flexible end.

- Works autonomously without the requirement of continuous connection to air supply
- Suitable for dispensing automotive engine & gearbox oils

SPECIFICATIONS

Tank capacity	65 litre / 17 gallon
Air pressure	7 – 8 bar / 100 – 114 psi
Maximum pressure	10 bar / 145 psi
Flex hose	2000 mm / 79"
Weight	26 kgs / 57 lbs



4005

MOBILE PNEUMATIC OIL DISPENSER 65 LTR

PART NUMBER	DESCRIPTION	PRICE
GR-JPOD065	Mobile pneumatic oil dispenser	£291.90

DESCRIPTION

Mobile oil dispensing units for 205 ltr drums. Suitable for dispensing oil at medium / high viscosity, for mobile installations and fixed systems at medium distances, the drum trolley allows the system to be moved around the workshop with ease, giving increased efficiency. All items are available separately or in kit form.

KIT CONTENTS

- GR-J300-DRUM - oil pump
- GR-J18163536 - digital control gun
- J1708003 - drum trolley
- JCONNECT - connecting hose



4005

New

OIL DISPENSING KIT

PART NUMBER	DESCRIPTION	PRICE
GR-JOS100	Portable Oil Dispensing Kit C/W Digital Oil Gun	£618.00

DESCRIPTION

Mobile oil dispensing units for 205 ltr drums. Suitable for dispensing oil at medium / high viscosity, for mobile installations and fixed systems at medium distances, the drum trolley allows the system to be moved around the workshop with ease, giving increased efficiency. All items are available separately or in kit form.

KIT CONTENTS

- GR-J300D - oil pump
- GR-J1782802 - oil control gun
- GR-J1708003 - drum trolley
- GR-JCONNECT - connecting hose



4005

New

OIL DISPENSING KIT

PART NUMBER	DESCRIPTION	PRICE
GR-JOS100M	Portable Oil Dispensing Kit C/W manual Oil Gun	£576.79

DESCRIPTION

Mobile oil dispensing units suitable for use with 205 litre drums. Units dispense oil at medium / high viscosity. For mobile installations and fixed systems at medium distances. The drum trolley allows the system to be moved around the workshop with ease, giving increased efficiency. All items are available separately or in kit form.

FEATURES

- Suitable for use with 205 litre drums
- Supplied complete with a 3:1 ratio pump, digital oil control gun, trolley and a 15 m hose reel



4005

OIL DISPENSING KIT

PART NUMBER	DESCRIPTION	PRICE
GR-JOS200	Oil dispensing kit	£937.75

OIL DISPENSING KITS

FEATURES

These kits include the popular 808 series medium pressure oil reel, along with the choice of 3:1 or 5:1 ratio oil drum pump with a 2 m pump to reel connecting hose. J18163536 digital oil delivery gun or the J1782802 manual oil delivery gun will also be included.



4005

**DRUM MOUNT
OIL DISPENSING KIT**

PART NUMBER	DESCRIPTION	PRICE
GR-C808-OKDD	Manual gun	£640.79
GR-C808-OKMD	Digital gun	£727.68

FEATURES

These kits include the popular 808 series medium pressure oil reel, along with a choice of 3:1 or 5:1 ratio oil stub pumps with a 2 m pump to reel connection hose. J18163536 digital oil gun or the J1782802 oil gun and wall mounted pump bracket kit will also be included.



4005

**WALL MOUNT
OIL DISPENSING KIT**

PART NUMBER	DESCRIPTION	PRICE
GR-C808-OKMW	Manual gun	£697.83
GR-C808-OKDW	Digital gun	£799.65

NOZZLES

FEATURES

Constructed in cast aluminium with plastic coated body and plastic handle assembly. Automatically shuts off the flow of fuel when the tank is full. Flow rate 45-60 l/min. High, medium and low volume latching facility. Suitable for use with petrol or diesel. Integral strainer. Plastic coated body and plastic handle assembly.



4005

**ALUMINIUM SHUT-OFF NOZZLE
3/4" AUTOMATIC**

PART NUMBER	DESCRIPTION	PRICE
GR-J1789022-1	Fuel nozzle 3/4" automatic	£64.25

FEATURES

Constructed in cast aluminium with plastic coated body and handle assembly. Automatically shuts off the flow of fuel when the tank is full. Flow rate 80 – 120 l/min. High, medium and low volume latching facility. 1" inlet with 1" spout. Suitable for use with petrol or diesel. Plastic coated body and handle assembly.



4005

1" HIGH VOLUME AUTO NOZZLE

PART NUMBER	DESCRIPTION	PRICE
GR-J18312002-1	1" High volume auto nozzle	£99.95

FEATURES

Constructed in cast aluminium with plastic coated body and handle assembly. Automatically shuts off the flow of fuel when the tank is full. Flow rate 80 – 120 l/min. High, medium and low volume latching facility. 1" inlet with 1" spout. Suitable for use with petrol or diesel. Plastic coated body and handle assembly.



4005

1" HIGH VOLUME AUTO NOZZLE

PART NUMBER	DESCRIPTION	PRICE
GR-J1789023-1	1" High volume auto nozzle	£99.95

For CEJN Quick Connect
Pneumatic Couplings,
see pages 6-16 & 21-25.

NOZZLES

FEATURES

- Stainless steel, automatic nozzle, suitable for use with AdBlue pumps
- Automatically shuts off flow when the vehicle tank is full
- Heavy duty, stainless steel (SS304) cast body with polyamide cover
- Built-in stainless steel swivel for ease of use

SPECIFICATIONS

Flow rate	45 l/min
Working temperature range	10°C to 50°C
Max working pressure	50 psi
Inlet	3/4" hose barb



4005

**3/4" ADBLUE NOZZLE –
AUTOMATIC SHUT-OFF
STAINLESS STEEL**

PART NUMBER	DESCRIPTION	PRICE
GR-ZFCNASS34	Stainless steel AdBlue nozzle	£319.04

FEATURES

For use with DEF, AdBlue, urea, windshield fluids and other water based media.

- Nylon construction with stainless steel internal parts and viton™ seal
- Nozzle spout with notches to stop the gun from slipping from the tank during delivery
- Manual control
- Includes continuous flow switch for unattended dispensing
- Designed for minimal back pressure and reduction in flow

SPECIFICATIONS

Flow rate	90 l/min
Working temperature range	Up to 60°C
Max working pressure	5 bar
Inlet	3/4" hose barb



4005

**3/4" ADBLUE NOZZLE –
MANUAL**

PART NUMBER	DESCRIPTION	PRICE
GR-ZABN34	3/4" AdBlue nozzle	£50.22

DESCRIPTION

Aluminium fuel nozzle with 3/4" BSP swivel inlet port. Suitable for use with electric fuel pumps and gravity feed applications. Also includes continuous flow switch for unattended dispensing.

FEATURES

- For use with diesel, kerosene and petrol
- 160 mm long spout
- Fitted with continuous flow switch
- 3/4" BSP hose swivel at inlet for increased manoeuvrability.



4005

**ALUMINIUM FUEL NOZZLE
3/4" MANUAL**

PART NUMBER	DESCRIPTION	PRICE
GR-ZFN34	Fuel nozzle 3/4" manual	£24.68

DESCRIPTION

Aluminium fuel nozzle with 1" BSP swivel inlet port. Suitable for use with electric fuel pumps and gravity feed applications. Also includes continuous flow switch for unattended dispensing.

FEATURES

- For use with diesel, kerosene and petrol
- 160 mm long spout
- Fitted with continuous flow switch
- ZFN1 – 1" BSP hose swivel at inlet for increased manoeuvrability



4005

**ALUMINIUM FUEL NOZZLE
1" MANUAL**

PART NUMBER	NOZZLE SIZE	PRICE
GR-ZFN1	Fuel nozzle 1" manual	£30.44

FUEL HANDLING EQUIPMENT

FEATURES

Inline hose break coupling, designed to be installed between the fuel dispenser and nozzle. In case of drive off, the breakaway valve allows the nozzle end of the hose to get separated from the dispenser end of the hose. The dual poppets inside the hose break coupling close when the drive off happens, trapping the fuel inside the hose at both ends, thereby avoiding fuel spillage and possible damage to the environment. Tolerant of pulsing and line shocks, due to sturdy yet lightweight aluminium design body. PVC sleeve provides better grip and handling. Designed to pull apart at max 1500N/350 lbs pull force. Small and lightweight with minimal flow restriction. Wetted components: aluminium, nylon and viton™. Max flow rate: 60 l/min



4005

HOSE BREAK COUPLINGS

PART NUMBER	NOZZLE SIZE	PRICE
GR-ZBKV34N	3/4" NPT	£43.48
GR-ZBKV01N	1" NPT	£67.32

FEATURES

High flow fuel filter, complete with 10 micron spin-on style filter cartridge. Suitable for use with diesel, gasoline and gasohol. Aluminum die cast head, vacuum impregnated for leak proof operation. Inlet and outlet threaded 1" BSP(F). Fits spin on cartridges with 1 1/2" – 16 UNF threads. Designed for use on both mobile and stationary fuel tanks and on petrol and diesel fuel pumps. Ideal for use in construction and agricultural applications. Removes particulate contaminants, such as dirt, dust & rust. Not suitable for use with water based products, aviation, fuels, race fuels, etc.



4005

FUEL FILTER SPIN ON CARTRIDGE

PART NUMBER	DESCRIPTION	PRICE
GR-ZFFS10BSP	Fuel filter spin on cartridge	£49.32

FEATURES

- Unique front action operation allows the pump to be used on barrels placed in corners and other inaccessible areas.
- Heavy duty aluminium die cast pump head incorporates 2" bung threads
- Brass Piston rings for increased life
- Built-in nozzle holder for convenient storage of discharge hose
- Includes 1.8m PVC Nitrile delivery hose with metal nozzle, spring and hose clamp
- Supplied complete with telescopic suction tube for use on 50 litre (15 gallons) - 205 litre (55 gallons) drums
- Wetted components: Steel, aluminum, brass, NBR and PVC Nitrile
- Recommended use: For dispensing diesel, kerosene, heating oils, motor oils, lubricating oils (up to SAE 90) and other non-corrosive media
- Do not use with water based media, antifreeze, solvents, acids and gasoline, etc.



New

HAND OPERATED BARREL PUMP

4005

PART NUMBER	DESCRIPTION	PRICE
GR-ZA2HBL	Barrel pump	£101.63

FEATURES

The 3 veins give the pump the ability to deliver media with a lift up to 6.1 m (20 ft).

- Delivers media with a head/lift up to 6.1 m (20 ft)
- Delivers 38 l/min (10 g/min)
- 8 ft antistatic discharge hose with flame arrestor and vacuum breaker
- Suitable for gasoline, diesel and kerosene



4005

INDUSTRIAL ROTARY FUEL PUMP

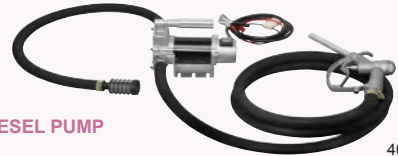
PART NUMBER	DESCRIPTION	PRICE
GR-ZRBP3V	Industrial rotary fuel pump	£264.74

FEATURES

Lightweight and portable diesel transfer pump. Self priming vane pump design.

Kit includes base plate, lift handle, 4 m suction/delivery hose with clamps and fuel strainer, 2 m battery cable with fuse and aluminium fuel nozzle.

- Flow rate (at pump outlet) up to 46 l/min (12 g/min)
- Motor 1/4 HP 12 v DC
- RPM 2600
- AMP draw from battery 12 amp
- Internal bypass valve
- Duty cycle 30 mins on / 30 mins off



4005

ELECTRIC DIESEL PUMP 12 V

PART NUMBER	DESCRIPTION	PRICE
GR-ZEDP12V	Electric diesel pump – 12 V	£302.21

FEATURES

- 2 m / 6.5 ft suction hose with filter
- 4 m / 13 ft delivery hose with aluminium manual nozzle
- 2 m / 6.5 ft long battery cable with crocodile clips
- Self priming diesel transfer pump
- Bypass valve built into pump casing
- Waterproof to IP55
- Flow rate – 40 l/min (10 GPM)
- Duty cycle – 30 mins on / 30 mins off



4005

FUEL TRANSFER PUMP KIT

PART NUMBER	DESCRIPTION	PRICE
GR-J10304022	12 V	£249.81
GR-J10304024	24 V	£249.81

DESCRIPTION

The J1703004 rotary action vane type pump is suitable for dispensing diesel and lubricating oils, up to SAE 90, output of up to 25 l/min.

FEATURES

- Supplied with 3 piece suction tube and 2" bung adaptor
- Built in suction strainer
- Suitable for dispensing diesel and lubricating oils up to SAE 90
- Output – up to 25 l/min
- Suitable for 50-205 litre drums



4005

ROTARY BARREL PUMP SUITABLE FOR 50-205 LTR DRUMS

PART NUMBER	DESCRIPTION	PRICE
GR-J1703004	Rotary barrel pump	£31.91

PNEUMATIC OIL PUMP KIT

FEATURES

- Suitable for use with oils up to 120 SAE
- Suitable for use with engine oil, synthetic oil, hydraulic oil, gear oil and automatic transmission fluid
- Low noise level – quiet, efficient and reliable
- Supplied with 2" bung adaptor
- 2 year manufacturer's warranty

SPECIFICATIONS

Ratio	1:1
Working pressure	5 – 8 bar (70 – 115 psi)
Air consumption	100 l/min
Output capacity	18 l/min
Suction tube diameter	42 mm
Air inlet connection	1/4" quick plug
Oil delivery connection	1/2" male
Max. viscosity	120 SAE



1:1 OIL PUMP SYSTEM

4005

PART NUMBER	DESCRIPTION	PRICE
GR-J100TDG	Manual gun	£387.20
GR-J100TDGD	Digital gun	£441.65

SYPHON PUMP

DESCRIPTION

Easy to use, polyethylene pump syphons liquids to lower levels than the height at which the pump is installed. These pumps are easy to prime and start within 6 – 7 strokes. The pump requires no further operation and keeps working in auto position. All pumps are equipped with a vent cap on top. Opening the cap stops the discharge. To dispense media at levels higher than the pump, the pump needs to be continuously operated.

FEATURES

- Supplied complete with flexible corrugated discharge tube.
- Recommended for use with water-based fluids, detergents, waxes, soaps, antifreeze, some mild acids, and other liquids compatible with the pump construction materials.
- The pump must never be used with hot media at temperatures above 60°C.
- These pumps must never be used with concentrated acids, acetone, benzene and any media that is not compatible with the materials used in the pump.

SPECIFICATION	GR-ZSPH1	GR-ZSPH2
Bung	1 – 1/2" – use with pails	2" – use with drums
Discharge	6.5 l/min / 2 gpm	17.5 l/min / 5 gpm
Discharge hose length	551 mm	1180 mm
Wetted components	Polyethylene	Polyethylene & polypropylene



SYPHON PUMP

4005

PART NUMBER	DRUM SIZE	PRICE
GR-ZSPH1	5 – 25 ltr	£3.45
GR-ZSPH2	205 ltr	£13.31

LEVER HAND PUMP

DESCRIPTION

The J1703001 self priming lever pump is manufactured in steel, which is zinc plated to give a quality finish. Supplied with self adjusting, telescopic suction tube and 2" bung nut.

FEATURES

- Cushioned vinyl handle
- Supplied with self-adjusting suction tube
- Dispenses approximately 300 cc per stroke
- Zinc plated for lasting quality and appearance
- Suitable for use with 50 – 205 litre drums



4005

SUITABLE FOR 50 – 205 LTR DRUMS

PART NUMBER	DESCRIPTION	PRICE
GR-J1703001	Lever hand pump	£29.37

FEATURES

Lever action barrel pump for AdBlue, antifreeze, detergents, pesticides and high viscosity oils. Supplied with suction tube and 2 m discharge hose. Pump outlet is fitted with an air vent cap, which when loosened, breaks the siphon action. Supplied complete with suction tube for use with 50 – 205 litre drums and 2 m 3/4" flexible corrugated discharge hose.

Do not use with: Any media not compatible with materials used in the pump construction. These pumps must not be used for fuel transfer or with solvent thinners, etc.



4005

LEVER ADBLUE PUMP

PART NUMBER	DESCRIPTION	PRICE
GR-ZPLP02	Lever AdBlue pump	£74.13

FEATURES

- Lever action barrel pump designed to dispense a variety of fluids
- Fitted with non-drip nozzle
- Suitable for use with AdBlue, fertilisers, antifreeze, oils, mild acids, diesel and degreasers
- Drum size 60 – 205 litre drums – telescopic riser 950 mm
- Pump output 325 ml per stroke
- Drum adapter 2" BSP
- Viscosity: lubricating oils up to SAE 40
- Max. temp 60°C
- Wetted components: polypropylene & NBR seals



4005

LEVER ACTION BARREL PUMP

PART NUMBER	DESCRIPTION	PRICE
GR-ZRB2088	Lever action barrel pump	£47.47

SPECIALITY PUMPS

FEATURES

Designed for mixing coolant concentrate and detergents with water for supply to machines.

- Driven by pressure from water supply
- Includes full brass ball valve and also fitted with 2 back flow preventers
- Adjustment of mixing ratio is variable and controlled through a simple turn of the knob

SPECIFICATIONS

Mixing ratio	0 to 11%
Capacity	1100 litres per hour



COOLANT LIQUID MIXER

4005

PART NUMBER	DESCRIPTION	PRICE
GR-ZCMX1	Coolant liquid mixer with 1/2" inlet	£195.53

FEATURES

Designed for mixing coolant concentrate and detergents with water for supply to machines.

- Driven by pressure from water supply
- Includes full brass ball valve and also fitted with 2 back flow preventers
- Adjustment of mixing ratio is variable and controlled through a simple turn of the knob

SPECIFICATIONS

Mixing ratio	0 to 57%
Capacity	1250 litres per hour



COOLANT LIQUID MIXER

4005

PART NUMBER	DESCRIPTION	PRICE
GR-ZCMX2	Coolant liquid mixer with 1/2" inlet	£213.37

FEATURES

The Groz coolant/liquid mixers use a rotary disc valve, which is precision CNC machined from stainless steel and is highly accurate. The compact construction and minimal parts makes them easy to install, highly reliable and virtually maintenance free, whilst providing easy and fast adjustment. Common applications are mixing liquid coolant concentrate and detergents with water for supply to machines.

- Lightweight aluminium body
- Driven by pressure from water supply
- Includes full flow brass ball valve and also fitted with 2 back flow preventers
- Adjustment of mixing ratio is variable & controlled through a simple turn of the knob
- Application: Metal working fluids

SPECIFICATIONS

Mixing ratio	0 to 9%
Capacity	1100 litres per hour



COOLANT LIQUID MIXER

4005

PART NUMBER	DESCRIPTION	PRICE
GR-ZCMX3	Coolant liquid mixer with 1/2" inlet	£208.06

New

FLOW METERS

DESCRIPTION

Digital turbine meter with polyamide construction, designed especially for use with adBlue, DEF, UREA, windshield fluid and water.

FEATURES

- Designed for in-line, end of line application or use with a dispensing nozzle.
- Electronic display using two AAA 1.5 V batteries
- Display can be rotated in 4 different positions
- Includes one additional stainless steel adapter to convert from 1" male to 1" female threads
- Measures in litres, quarts, pints and gallons
- Can be field calibrated

SPECIFICATIONS

Flow rate	5 – 120 //min
Accuracy	+ / - 1%
Repeatability	+ / - 0.30%
Max. working pressure	145 psi
Burst pressure	580 psi
Working temp. range	-10°C to +50°C
Max. resettable batch total	99,999 units
Max. non resettable batch	9,99,999 units
Max. viscosity	5.35 cst
Water resistance	IP55



DIGITAL TURBINE METER

4005

PART NUMBER	DESCRIPTION	PRICE
GR-ZWM20	Digital turbine meter	£211.79

FEATURES

- Nutating disc meter suitable for diesel, petrol, biodiesel and low viscosity oils.
- Suitable for both gravity and pumped systems
- 3 Port design, which allows the meter to be fitted in-line or with inlet and outlet ports to be at right angles
- Nutating disc mechanism offers high tolerance to fuel contamination.
- Easy user re-calibration

SPECIFICATIONS

Flow range	15 to 75 l/min (4 – 20 gsm)
Accuracy	+/- 1% (of reading)
Repeatability	+/- 0.50%
Max working pressure	50 psi (3.5 bar)



MECHANICAL FUEL METER

4005

PART NUMBER	DESCRIPTION	PRICE
GR-ZFM100	Mechanical fuel meter	£167.00

FEATURES

- High pressure, positive displacement meter for oils, diesel and biodiesel
- Oval gear mechanism for optimum accuracy
- Electronic display using two 1.5 V batteries
- Easy user calibration
- Recommended use with oils that have a viscosity up to 5000 cST, diesel and biodiesel

SPECIFICATIONS

Flow rate	1 to 30 l/min (0.3 to 8 gsm)
Accuracy	+/- 1%
Max. working pressure	1000 psi (70 bar)
Thread inlet/outlet	1/2" BSPT



DIGITAL OIL METER

4005

PART NUMBER	DESCRIPTION	PRICE
GR-ZOM20	Digital oil meter	£214.48

FEATURES

Simple, snap action clamp for safe storage of grease gun and suction gun.

New Additions



GREASE GUN HOLDER

4005

PART NUMBER	FOR USE WITH	PRICE
GR-ZGGH01	400g barrels – 57.15mm dia	£4.16
GR-ZGGH02	450g barrels – 63.5mm dia	£7.14

FEATURES

Zinc die cast coupler body for greasing button head fittings, found mostly on heavy machinery or contractor's equipment.

- Maximum working pressure 3,000 psi (207 bar)
- Swivelling for 5/8" (16 mm) button head fittings.



SWIVELLING BUTTON COUPLER

4005

PART NUMBER	DESCRIPTION	PRICE
GR-ZBHC	Swivelling button coupler	£4.84

FEATURES

The Ezee lube kit comprises of a range of 7 quick connect lube accessories, to help with those difficult greasing jobs.

- Can be used in conjunction with any 3 jaw or 4 jaw couplers.
- Only suitable for hand operated grease guns.



EZEE LUBE KIT

4005

PART NUMBER	DESCRIPTION	PRICE
GR-ZGAK7	Ezee lube kit	£78.41

FEATURES

Grease control valve and z-swivel supplied as standard equipment with ZGPK125, ZGPK50 and ZGPK180 grease kits. Also suitable for use with other air powered grease units.

- Maximum outlet pressure 500 bar (7500 psi).
- Provides continuous grease flow when trigger fully pressed.
- Comes complete with 360 degree z-swivel, 6" steel extension and professional 4 jaw coupler.



GREASE CONTROL VALVE AND Z-SWIVEL

4005

PART NUMBER	DESCRIPTION	PRICE
GR-ZBGZ	Grease control valve and z-swivel	£65.87

FEATURES

Automatic non-drip nozzle, designed with multiple check valves to achieve absolute non-drip. The nozzle opens automatically under pressure and closes automatically with the release of pressure. The discharge end has a narrow section, allowing the nozzle to dispense into small openings. Designed to minimise pressure loss. 1/4" BSPT (F) inlet thread.



AUTOMATIC NON-DRIP NOZZLE

4005

PART NUMBER	DESCRIPTION	PRICE
GR-ZNDN	Automatic non-drip nozzle	£16.52

FEATURES

An easy and convenient tool to open almost all types of drum. Designed to fit most 2" and 3/4" drum plugs. Manufactured from cast aluminium, hardened and tempered for increased strength.



DRUM WRENCH

4005

PART NUMBER	DESCRIPTION	PRICE
GR-ZDR	Drum wrench	£16.48

FEATURES

- High flow fuel filter with 10 micron fuel filter element
- Suitable for use with diesel fuel and gasoline
- 1" BSP threaded aluminium inlet / outlet ports
- Maximum working pressure 150 psi / 10 bar
- Not suitable for use with water based products, aviation fuels and race fuels



FUEL FILTER

4005

PART NUMBER	DESCRIPTION	PRICE
GR-ZFFL02B	Fuel filter	£47.12

FEATURES

Suitable for use with diesel fuel and gasoline. Wetted components, aluminium, polypropylene, NBR, steel, paper element, nylon and brass. Not suitable for use with water based products, aviation fuels and race fuels.



New Additions

FILTER ELEMENT

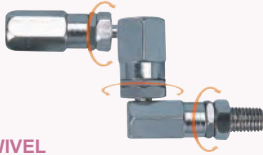
4005

PART NUMBER	DESCRIPTION	PRICE
GR-ZFE10	10 Micron filter element	£10.29
GR-ZFEWB	Water block filter element	£12.68

FEATURES

Installed between the delivery hose and grease control valve. Swivels permit easy handling of control valves and prevent damage to the hose caused by twisting. Constructed from heavy duty steel with ball bearings for smooth operation and free, unrestricted movement through 360°.

- Max working pressure 6,000 psi (413 bar)
- Thread specification 1/4" BSPT (M) – 1/4" BSPT (F)



HIGH PRESSURE Z-SWIVEL

4005

PART NUMBER	DESCRIPTION	PRICE
GR-ZHPZS	High pressure z-swivel	£26.35

FEATURES

Aluminium drum bung for use primarily with air operated pumps. Bungs can be adjusted anywhere on the suction tube and tightened using wing nut.

- Zinc die cast locking nut inside holds the suction tube
- Inside diameter 42 mm (standard on all Groz ZAOP Series)



BUNG NUT

4005

PART NUMBER	DESCRIPTION	PRICE
GR-ZBN	Bung nut	£19.77

FEATURES

All steel, wall mounting bracket for installing stub pumps.

- Fitted with welded 2" (F) bung
- Length 4 3/4" (120 mm) Width 6" (150 mm) Height 6" (150 mm)



WALL MOUNTING BRACKET

4005

PART NUMBER	DESCRIPTION	PRICE
GR-ZMB	Wall mounting bracket	£39.52

FEATURES

Used at the bottom of the suction tube as a non-return valve, which helps in retaining prime.

Machined aluminium construction with steel non-return ball 1" BSP (F) thread



FOOT VALVE

4005

PART NUMBER	DESCRIPTION	PRICE
GR-ZFV1	Foot valve	£29.69

FEATURES

- Anti-splash and spill proof 1.7 litre funnel, complete with mesh screen, dust cover and flexible spout
- Heavy duty, polypropylene construction in translucent white to give clear view of media
- Supplied with dust cap and wire mesh screen to keep contaminants out



FUNNEL AND FLEXIBLE SPOUT

1.7 LITRE

4005

PART NUMBER	DESCRIPTION	PRICE
GR-ZFNL8	Funnel and flexible spout	£10.99

FEATURES

- Anti-splash and spill proof 3 litre funnel, complete with mesh screen, dust cover and flexible spout
- Heavy duty, polypropylene construction in translucent white to give clear view of media
- Supplied with a 2" bung adaptor for direct attachment to drum
- Supplied with dust cap and wire mesh screen to keep contaminants out



FUNNEL AND FLEXIBLE SPOUT

3 LITRE

4005

PART NUMBER	DESCRIPTION	PRICE
GR-ZFNL9B	Funnel and flexible spout	£18.83

FEATURES

Plastic measure for transferring metered quantities
Manufactured from translucent, high density polyethylene
Marked in both litres and quarts
Comes complete with polyethylene, flexible spout and polypropylene lid



FLEXIBLE SPOUT MEASURE

1 LITRE

4005

PART NUMBER	DESCRIPTION	PRICE
GR-ZFSM1	Flexible spout measure	£5.57

FEATURES

Plastic measure for transferring metered quantities
Manufactured from translucent, high density polyethylene
Marked in both litres and quarts
Comes complete with polyethylene, flexible spout and polypropylene lid



FLEXIBLE SPOUT MEASURE

5 LITRE

4005

PART NUMBER	DESCRIPTION	PRICE
GR-ZFSM5	Flexible spout measure	£11.50

FEATURES

- Heavy duty grease pump kit 50:1 for use with standard 50 kg grease kegs
- Kit includes pump, lid, follower plate, 4 m hose, z-swivel and grease booster gun.
- Ideal for transferring grease in high volumes over long distances
- Pump service kits available
- Double acting pump provides continuous flow operation

SPECIFICATIONS

Drum application	50 kg
Pressure ratio	50:1
Air inlet pressure	5-12 bar / 70-180 psi
Max. free flow rate (min)	1.8 kg / 4 lbs
Suction tube length	740 mm / 19"



HEAVY DUTY GREASE PUMP KIT 50:1 50 KG

4005

PART NUMBER	DESCRIPTION	PRICE
GR-J17125050KIT	Heavy duty grease pump kit	£716.95

FEATURES

- Heavy duty grease pump kit 50:1 for use with standard 180 kg grease kegs
- Kit includes pump, lid, follower plate, 4m hose, z-swivel and grease booster gun
- Ideal for transferring grease in high volumes over long distances
- Pump service kits available
- Double acting pump provides continuous flow operation

SPECIFICATIONS

Drum application	180 kg
Pressure ratio	50:1
Air inlet pressure	5-12 bar / 70-180 psi
Max. free flow rate (min)	1.8 kg / 4 lbs
Suction tube length	940 mm / 37"



HEAVY DUTY GREASE PUMP KIT 50:1 180 KG

4005

PART NUMBER	DESCRIPTION	PRICE
GR-J17125060KIT	Heavy duty grease pump kit	£752.77

FEATURES

Fits into 3/4" threaded opening on 205 litre (55 gal) drums for convenient dispensing of media under gravity flow with the drum laid horizontally.

- 3/4" (M) thread
- Built-in bucket hanger
- Can be padlocked



4005

DRUM FAUCET / TAP

PART NUMBER	DESCRIPTION	PRICE
GR-ZFAU34	Drum faucet/tap	£6.60

FEATURES

Fitted with adjustable mechanism for use with 12.5 kg (28 lbs) to 50 kg (110 lbs) containers.

- Steel construction in premium powder coated finish
- Heavy duty wheels for use in rigorous workshop environments



4005

ADJUSTABLE DRUM TROLLEY

PART NUMBER	DESCRIPTION	PRICE
GR-ZTRL60	Adjustable drum trolley	£92.22

FEATURES

Fits into 2" threaded openings on 205 litre drums for the convenient dispensing of media under gravity flow when the drum is laid horizontally. Built-in sight glass port for mounting sight glass to check the fluid level in the drum. 2" (M) thread. Built-in bucket hanger. Can be padlocked.



4005

2" DRUM FAUCET / TAP

PART NUMBER	DESCRIPTION	PRICE
GR-ZFAU02	Drum faucet/tap	£16.42

FEATURES

Professional 360° hydraulic coupler. 3-Jaw 1/8" BSPT thread and hex nut. Swivels in full 360° circle and locks conveniently at any 45° position. 45° angle gives easy access to most grease fittings. Jaws are fully hardened for extended service life. Hardened coupler body and swivel joints withstand high pressure applications without deformations. Spring loaded, ball check valve helps retain grease pressure. Suitable for up to 7,000 psi / 483 bar.



4005

360° HYDRAULIC COUPLER

PART NUMBER	DESCRIPTION	PRICE
GR-ZHCSW3B	360° Hydraulic coupler	£19.65

ASSORTED GREASE NIPPLE PACKS

BOX CONTENTS

50 pcs of BSPT grease fittings:
 1/8" – 28 BSPT Straight = 20
 1/8" – 28 BSPT 45 degree = 5
 1/8" – 28 BSPT 90 degree = 5
 1/4" – 19 BSPT Straight = 10
 1/4" – 19 BSPT 45 degree = 5
 1/4" – 19 BSPT 90 degree = 5



4005

ASSORTED GREASE NIPPLE PACK 50 PIECE – BSPT

PART NUMBER	DESCRIPTION	PRICE
GR-ZBSP50	Assorted grease nipple pack – BSPT	£32.27

BOX CONTENTS

80 pcs of metric grease fittings:
 M6 X 1 Straight = 20
 M6 X 1 90 degree = 10
 M8 X 1 Straight = 15
 M8 X 1 90 degree = 10
 M10 X 1 Straight = 15
 M10 X 1 90 degree = 10



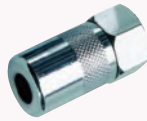
4005

ASSORTED GREASE NIPPLE PACK 80 PIECE – METRIC

PART NUMBER	DESCRIPTION	PRICE
GR-ZM80	Assorted grease nipple pack – metric	£36.26

FEATURES

Professional hydraulic coupler. 4 Jaw 1/8" BSPT thread and hex nut.



HYDRAULIC COUPLER 4-JAW

4005

PART NUMBER	DESCRIPTION	PRICE
GR-ZHC144B	Hydraulic coupler 4 jaw	£2.44

FEATURES

Grease gun extension that works as a rigid 13" (330 mm) long steel extension or converts into a flexible hose extension for greasing hard to reach fittings.

- Working pressure: 5,000 psi / 345 bar



FLEXIBLE RIGID EXTENSION

4005

PART NUMBER	DESCRIPTION	PRICE
GR-ZFRE	Flexible rigid extension	£31.12

FEATURES

Heavy duty, high pressure, flexible extension, suitable for both hand and air operated grease guns, fitted with 1/8" BSPTM male ends. Superior construction – inner tubing is polyamide with polyurethane sheathing, reinforced diagonally in highly tear resistant polyester.

- Length (end to end) 12" 300 mm
- Working pressure: 5,800 psi (400 bar)



HEAVY DUTY GREASE HOSE 300 MM

4005

PART NUMBER	DESCRIPTION	PRICE
GR-ZGH300	Heavy duty grease hose – 300 mm	£5.41

FEATURES

Heavy duty, high pressure, flexible extension, suitable for both hand and air operated grease guns, fitted with 1/8" BSPTM male ends. Superior construction – inner tubing is polyamide with polyurethane sheathing, reinforced diagonally in highly tear resistant polyester.

- Length (end to end) 20" 500 mm
- Working pressure: 5,800 psi (400 bar)



HEAVY DUTY GREASE HOSE 500 MM

4005

PART NUMBER	DESCRIPTION	PRICE
GR-ZGH500	Heavy duty grease hose – 500 mm	£7.12

COUPLER

FEATURES

Zinc die cast coupler body for greasing button head fittings, found mostly on heavy machinery or contractor's equipment.

- Maximum working pressure 7,500 psi (517 bar)
- Swivelling button head fittings
- Metal seal increases resistance to wear
- 12 months warranty



HOOK ON BUTTON HEAD COUPLER

4005

PART NUMBER	DESCRIPTION	PRICE
GR-ZHOC-1	Hook on button head coupler	£4.24
GR-ZPCN-2	HD Hook on button head coupler	£8.82

DRAIN PAN

DESCRIPTION

High density, polyethylene oil drain pan with 16 litre capacity

FEATURES

- High density, polyethylene construction
- 16 litre capacity
- Chemical / solvent resistant
- Built in anti-splash lip and baffles
- Large spout for fast pouring
- Supplied with threaded spout cap for safe transportation



HIGH DENSITY POLYETHYLENE OIL DRAIN PAN 16 LTR CAPACITY

4005

PART NUMBER	COLOUR	PRICE
GR-ZODP16	Black	£16.98
GR-ZODP16GN	Green	£16.98

LEVER TYPE OIL CAN

FEATURES

Lever type oil can with brass pump

- Capacity 500 ml / 16 oz / 1 pint
- Complete with rigid and flexible spout
- Manufactured with a brass pump and fitted with 2 ball valves for large volume delivery per stroke
- Blue powder coated finish



LEVER TYPE OIL CAN

4005

PART NUMBER	DESCRIPTION	PRICE
GR-ZMP23RFB	Lever type oil can	£8.44



SPECIFICATIONS	P CW254TC	P CW504TCAL	P CW5010AL	P CW5015AL	P CW5024AL	P CW50224AL
Working pressure	8 bar	8 bar	8 bar	8 bar	8 bar	8 bar
Noise level	40 dB/A	45 dB/A	45 dB/A	45 dB/A	45 dB/A	47 dB/A
Voltage	230 V / 50 Hz	230 V / 50 Hz	230 V / 50 Hz	230 V / 50 Hz	230 V / 50 Hz	230 V / 50 Hz
Dimensions L x D x H	340 x 350 x 340 mm	340 x 350 x 340 mm	330 x 350 x 450 mm	350 x 350 x 480 mm	400 x 400 x 510 mm	400 x 400 x 510 mm



3.5 LITRE TANK
0.25 HP / 0.20 KW

1210

PART NUMBER	INPUT	OUTPUT @ 5 BAR	WEIGHT	PRICE
P CW254TC	25 l/min	18.5 l/min	16 kg	£751.78



3.5 LITRE TANK
0.50 HP / 0.35 KW

1210

PART NUMBER	INPUT	OUTPUT @ 5 BAR	WEIGHT	PRICE
P CW504TCAL	50 l/min	37 l/min	22 kg	£1026.88



10 LITRE TANK
0.50 HP / 0.35 KW

1210

PART NUMBER	INPUT	OUTPUT @ 5 BAR	WEIGHT	PRICE
P CW5010AL	50 l/min	37 l/min	23 kg	£1026.88



15 LITRE TANK
0.50 HP / 0.35 KW

1210

PART NUMBER	INPUT	OUTPUT @ 5 BAR	WEIGHT	PRICE
P CW5015AL	50 l/min	37 l/min	28 kg	£1026.88



24 LITRE TANK
0.50 HP / 0.35 KW

1210

PART NUMBER	INPUT	OUTPUT @ 5 BAR	WEIGHT	PRICE
P CW5024AL	50 l/min	37 l/min	30 kg	£1114.04



24 LITRE TANK
1.00 HP / 0.70 KW

1210

PART NUMBER	INPUT	OUTPUT @ 5 BAR	WEIGHT	PRICE
P CW50224AL	100 l/min	74 l/min	44 kg	£1639.74

INTERIM SERVICE KITS
OIL, AIR FILTER, SEALS & GASKETS

1240

PART NUMBER	SERIES	PRICE
P CW25ISK	CW25	£41.08
P CW50ISK	CW50	£54.62
P CW50X2ISK	CW50x2	£85.19

MAIN SERVICE KITS
OIL, AIR FILTER, SEALS, GASKETS & VALVE PLATE KIT

1240

PART NUMBER	SERIES	PRICE
P CW25MSK	CW25	£76.67
P CW50MSK	CW50	£123.91
P CW50X2MSK	CW50x2	£207.10



SPECIFICATIONS	P CW10024AL	P CW10050AL	P CW15050AL	P CW20050AL
Working pressure	8 bar	8 bar	8 bar	8 bar
Noise level	47 dB/A	47 dB/A	48 dB/A	49 dB/A
Voltage	230 V / 50 Hz	230 V / 50 Hz	230 V / 50 Hz	230 V / 50 Hz
Dimensions L x D x H	650 x 360 x 550 mm	850 x 440 x 750 mm	850 x 440 x 750 mm	850 x 440 x 750 mm

24 LITRE TANK 1.00 HP / 0.70 KW



1210

PART NUMBER	INPUT	OUTPUT @ 5 BAR	WEIGHT	PRICE
P CW10024AL	100 l/min	74 l/min	43 kg	£1688.77

50 LITRE TANK 1.00 HP / 0.70 KW



1210

PART NUMBER	INPUT	OUTPUT @ 5 BAR	WEIGHT	PRICE
P CW10050AL	100 l/min	74 l/min	56 kg	£1887.60

50 LITRE TANK 1.50 HP / 1.00 KW



1210

PART NUMBER	INPUT	OUTPUT @ 5 BAR	WEIGHT	PRICE
P CW15050AL	150 l/min	111 l/min	71 kg	£2312.52

50 LITRE TANK 2.00 HP / 1.40 KW



1210

PART NUMBER	INPUT	OUTPUT @ 5 BAR	WEIGHT	PRICE
P CW20050AL	200 l/min	148 l/min	86 kg	£3816.06

INTERIM SERVICE KITS OIL, AIR FILTER, SEALS & GASKETS

1240

PART NUMBER	SERIES	PRICE
P CW100ISK	CW100	£85.19
P CW150ISK	CW150	£115.79
P CW200ISK	CW200	£146.40

MAIN SERVICE KITS OIL, AIR FILTER, SEALS, GASKETS & VALVE PLATE KIT

1240

PART NUMBER	SERIES	PRICE
P CW100MSK	CW100	£207.10
P CW150MSK	CW150	£336.08
P CW200MSK	CW200	£465.06

SPECIFICATIONS	P SA30TC	P SA50DAL	P SA309
Working pressure	8 bar	8 bar	8 bar
Noise level	40 dB/A	40 dB/A	40 dB/A
Voltage	230 V / 50 Hz	230 V / 50 Hz	230 V / 50 Hz
Dimensions L x D x H	280 x 350 x 340 mm	430 x 200 x 450 mm	330 x 330 x 470 mm

3.5 LITRE TANK 0.25 HP / 0.20 KW



1210

PART NUMBER	INPUT	OUTPUT @ 5 BAR	WEIGHT	PRICE
P SA30TC	25 l/min	18.5 l/min	18 kg	£640.10

6 LITRE TANK 0.50 HP / 0.35 KW



1210

PART NUMBER	INPUT	OUTPUT @ 5 BAR	WEIGHT	PRICE
P SA50DAL	50 l/min	37 l/min	23 kg	£928.82

9 LITRE TANK 0.25 HP / 0.20 KW



1210

PART NUMBER	INPUT	OUTPUT @ 5 BAR	WEIGHT	PRICE
P SA309	25 l/min	18.5 l/min	18 kg	£593.80

INTERIM SERVICE KITS OIL, AIR FILTER, SEALS & GASKETS

1240

PART NUMBER	SERIES	PRICE
P SA30ISK	SA30	£34.09
P SA50ISK	SA50	£54.59

MAIN SERVICE KITS OIL, AIR FILTER, SEALS, GASKETS & VALVE PLATE KIT

1240

PART NUMBER	SERIES	PRICE
P SA30MSK	SA30	£71.26
P SA50MSK	SA50	£123.91

PANTHER COMPRESSOR SPARES SYNTHETIC OIL & FILLER NOZZLE

1240

PART NUMBER	DESCRIPTION	PRICE
P C1069	0.5 litre bottle	£19.59

SPECIFICATIONS	P CMC90/10	P CMC90/24	P CMC90/224	P CMC90D	P AA063	P AA071
Working pressure	7 bar	7 bar	7 bar	7 bar	7 bar	8 bar
Noise level	59 dB/A	59 dB/A	63 dB/A	59 dB/A	52 dB/A	50 dB/A
Voltage	230 V / 50 Hz	230 V / 50 Hz	230 V / 50 Hz	230 V / 50 Hz	230 V / 50 Hz	230 V / 50 Hz
Dimensions L x D x H	350 x 350 x 470 mm	410 x 410 x 550 mm	650 x 360 x 550 mm	430 x 200 x 450 mm	440 x 230 x 390 mm	380 x 230 x 390 mm

10 LITRE TANK 0.50 KW



1210

PART NUMBER	INPUT	OUTPUT @ 5 BAR	WEIGHT	PRICE
P CMC90/10	91 l/min	52 l/min	18 kg	£1035.05

24 LITRE TANK 0.50 KW



1210

PART NUMBER	INPUT	OUTPUT @ 5 BAR	WEIGHT	PRICE
P CMC90/24	91 l/min	52 l/min	25 kg	£1073.19

24 LITRE TANK 1.00 KW



1210

PART NUMBER	INPUT	OUTPUT @ 5 BAR	WEIGHT	PRICE
P CMC90/224	182 l/min	104 l/min	38 kg	£1854.92

6 LITRE TANK 0.50 KW



1210

PART NUMBER	INPUT	OUTPUT @ 5 BAR	WEIGHT	PRICE
P CMC90D	91 l/min	52 l/min	18 kg	£1116.77

3.5 LITRE TANK 0.50 KW



1210

PART NUMBER	INPUT	OUTPUT @ 5 BAR	WEIGHT	PRICE
P AA063	91 l/min	52 l/min	15 kg	£1315.60

3.5 LITRE TANK 0.27 KW



1210

PART NUMBER	INPUT	OUTPUT @ 5 BAR	WEIGHT	PRICE
P AA071	37 l/min	21 l/min	12 kg	£1086.80

OIL FREE COMPRESSOR ACCESSORIES

SOUNDPROOF CABINET FOR 24 LITRE TANK



1240

PART NUMBER	SIZE	PRICE
P SILBOX24	770 x 630 x 820 mm	£604.19

FOR 50 LITRE TANK

P SILBOX50	770 x 630 x 1040 mm	£726.90
------------	---------------------	---------

INTERIM SERVICE KITS

AIR FILTER AND PISTON RING KIT

1240

PART NUMBER	SERIES	PRICE
P DA1ISK	DA1	£78.48
P DA2ISK	DA2	£78.48
P DA3ISK	DA3 / DA4	£156.95
P DA22ISK	DA2x2	£156.95
P DA32ISK	DA3x2	£235.43
P DA42ISK	DA4x2	£235.43

MAIN SERVICE KITS

AS INTERIM KIT PLUS VALVE PLATE KIT & N/R VALVE

1240

PART NUMBER	SERIES	PRICE
P DA1MSK	DA1	£296.50
P DA2MSK	DA2	£296.50
P DA3MSK	DA3 / DA4	£592.97
P DA22MSK	DA2x2	£592.97
P DA32MSK	DA3x2	£874.00
P DA42MSK	DA4x2	£874.00

SPECIFICATIONS	P DA1245	P DA2505	P DA12457	P DA25057	P DA124379	P DA250379
Working pressure	7 bar	7 bar	7 bar	7 bar	7 bar	7 bar
Noise level	70 dB/A	72 dB/A	70 dB/A	72 dB/A	55 dB/A	56 dB/A
Dimensions L x D x H	450 x 450 x 650 mm	450 x 450 x 900 mm	600 x 450 x 700 mm	650 x 450 x 900 mm	750 x 580 x 810 mm	750 x 580 x 810 mm

OIL FREE COMPRESSORS – STANDARD

24 LITRE TANK
1.26 HP / 0.93 KW



1210

PART NUMBER	INPUT	OUTPUT @ 5 BAR	WEIGHT	PRICE
P DA1245	100 l/min	62 l/min	28 kg	£1266.58

50 LITRE TANK
1.7 HP / 1.25 KW



1210

PART NUMBER	INPUT	OUTPUT @ 5 BAR	WEIGHT	PRICE
P DA2505	155 l/min	121 l/min	44 kg	£1721.45

OIL FREE COMPRESSORS – WITH DRYER

24 LITRE TANK
1.26 HP / 0.93 KW



1210

PART NUMBER	INPUT	OUTPUT @ 5 BAR	WEIGHT	PRICE
P DA12457	100 l/min	62 l/min	38 kg	£2342.48

50 LITRE TANK
1.7 HP / 1.25 KW



1210

PART NUMBER	INPUT	OUTPUT @ 5 BAR	WEIGHT	PRICE
P DA25057	155 l/min	121 l/min	54 kg	£2609.41

OIL FREE COMPRESSORS – WITH DRYER AND SILBOX

24 LITRE TANK
1.26 HP / 0.93 KW



1210

PART NUMBER	INPUT	OUTPUT @ 5 BAR	WEIGHT	PRICE
P DA124379	100 l/min	62 l/min	68 kg	£3026.16

50 LITRE TANK
1.7 HP / 1.25 KW



1210

PART NUMBER	INPUT	OUTPUT @ 5 BAR	WEIGHT	PRICE
P DA250379	155 l/min	121 l/min	94 kg	£4036.69

SPECIFICATIONS	P DA221003	P DA321003	P DA421003	P DA2210037	P DA3210037	P DA4210037
Working pressure	7 bar	7 bar	7 bar	7 bar	7 bar	7 bar
Noise level	76 dB/A	78 dB/A	80 dB/A	76 dB/A	78 dB/A	80 dB/A
Dimensions L x D x H	1350 x 410 x 870 mm	1350 x 410 x 870 mm	1350 x 410 x 870 mm	1350 x 650 x 870 mm	1350 x 650 x 870 mm	1350 x 650 x 870 mm

OIL FREE COMPRESSORS – STANDARD

100 LITRE TANK
3.4 HP / 2.5 KW



1210

PART NUMBER	INPUT	OUTPUT @ 5 BAR	WEIGHT	PRICE
P DA221003	310 l/min	242 l/min	85 kg	£3096.98

5.7 HP / 4.2 KW

P DA321003	414 l/min	288 l/min	95 kg	£4091.17
------------	-----------	-----------	-------	----------

6.7 HP / 4.9 KW

P DA421003	482 l/min	356 l/min	97 kg	£4521.53
------------	-----------	-----------	-------	----------

OIL FREE COMPRESSORS – WITH DRYER

100 LITRE TANK
3.4 HP / 2.5 KW



1210

PART NUMBER	INPUT	OUTLET @ 5 BAR	WEIGHT	PRICE
P DA2210037	310 l/min	242 l/min	105 kg	£5161.62

5.7 HP / 4.2 KW

P DA3210037	414 l/min	288 l/min	110 kg	£5774.48
-------------	-----------	-----------	--------	----------

6.7 HP / 4.9 KW

P DA4210037	482 l/min	356 l/min	112 kg	£6591.62
-------------	-----------	-----------	--------	----------

SPECIFICATIONS

Fluid	Compressed air
Pressure	11 bar
Hydrostatic test pressure	16.5 bar
Temperature range	-10°C to +60°C
Threads	Parallel UNI – ISO 228/1 (BSP)
Materials	Bottom: Steel FeP04 Shell: Steel FeP04 Socket joints: Fe 45.1
External treatments	Epoxide powder painting RAL 5015-110



MINI AIR RECEIVER 11 BAR 2 PORT

1250

PART NUMBER	CAPACITY	PRICE
AIRREC-M2.5L	2.5 L	£64.36
AIRREC-M5L	5 L	£93.30
AIRREC-M7L	7 L	£106.04
AIRREC-M12L	12 L	£180.09

BRACKET

FOR USE WITH MINI AIR RECEIVER



1250

PART NUMBER	FOR USE WITH	PRICE
AIRREC-STBRK	Mini air receiver	£14.97

ADAPTOR

FOR USE WITH MINI AIR RECEIVER



1250

PART NUMBER	FOR USE WITH	PRICE
AIRREC-RSBA	Mini air receiver	£3.69

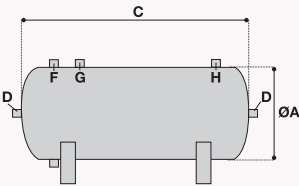
SPECIFICATIONS

Material	Carbon steel
Standard finishes	Internal: raw External: painted RAL 5015 blue
Upon request	Other colours, other sizes, galvanised
Certification	2009/105 EC
Working temperature	-10°C to +120°C
Working pressure	11 bar, 15 bar upon request

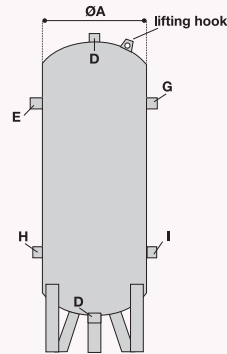
PART NUMBER	A mm	Inlet/outlet EGHI
AIRREC-V100L	370	3/4
AIRREC-V200L	440	1
AIRREC-V500L	600	1
AIRREC-V1000L*	800	2

* Certification 97/23/EC (PED).

PART NUMBER	A mm	C mm	D inch	F inch	G inch	H inch
AIRREC-H25L	210	694	1/2	3/8	1/2	–
AIRREC-H50L	280	863	1/2	3/8	3/4	–
AIRREC-H100L	350	1085	1/2	3/8	3/4	1/2
AIRREC-H200L	440	1350	1/2	3/8	3/4	1/2



DFGH = Inlet/outlet



H & I = Service outlets
D = Discharge



New Additions

HORIZONTAL AIR RECEIVER 11 BAR PAINTED BLUE FITTINGS KIT INCLUDED

1250

PART NUMBER	CAPACITY	PRICE
AIRREC-H25L	25 L	£180.52
AIRREC-H50L	50 L	£241.96
AIRREC-H100L	100 L	£311.05
AIRREC-H200L	200 L	£643.14

VERTICAL AIR RECEIVER UP TO 12 BAR PAINTED BLUE FITTINGS KIT INCLUDED

1250

PART NUMBER	CAPACITY	PRICE
AIRREC-V100L	100 L	£306.36
AIRREC-V200L	200 L	£616.60
AIRREC-V270L	270 L	£707.13
AIRREC-V500L	500 L	£989.45
AIRREC-V1000L	1000 L	£1621.69

Carriage for 25 to 1000 litre air receivers charged at cost.