

QUICK CONNECT PNEUMATIC COUPLINGS



2 Table of Contents



11 CEJN
Soft-Line Covers &
Assembly Tools



3 Nipple Profile



12 CEJN
326 eSafe Series Couplings
326 Standard Nipples



4 Choosing the Right Coupling



13 CEJN
410 eSafe Series Couplings
410 Standard Nipples



5 CEJN
eSafe Couplings



14 CEJN
416 eSafe Series Couplings
416 Standard Nipples



6 CEJN
220 Series



15 CEJN
430 eSafe Series Couplings
430 Standard Nipples



7 CEJN
300 eSafe Series Couplings
300 Standard Nipples



16 CEJN
550 eSafe Series Couplings
550 Standard Nipples



8 CEJN
310 eSafe Series Couplings
310 Standard Nipples



17 CEJN
Streamline Adaptors &
Accessories



9 CEJN
315 eSafe Series Couplings
315 Standard Nipples



17 CEJN
PUR Hose & Assemblies



10 CEJN
320 eSafe Series Couplings
320 Standard Nipples



21 CEJN
341 Breathing Air Series



11 CEJN
320 eSafe Multi-Link &
Female Adaptor Multi-Link



22 CEJN
342 Breathing Air Series

QUICK CONNECT PNEUMATIC COUPLINGS



23

CEJN
344 Breathing Air Series



32

SCHRADER
Twistlock Series Standard
and Heavy Duty



24

CEJN
345 Breathing Air Series



33

PARKAIR
399 Series and Whip Hose
Assemblies



25

CEJN
442 Breathing Air Series



34

PARKAIR
499 Series Heavy Duty



26

PARKAIR
CP17 Series



35

PCL
Airflow Series



27

PARKAIR
CP19 Series



36

PCL
Vertex Series



28

PARKAIR
21 Series



37

PCL
60 / 100 Series



29

PARKAIR
CP21 Series
Colour-Coded



38

PCL
Safeflow Safety Series



29

PARKAIR
CP21 Series
Brass



39

PCL
Instant-Air Series Steel



30

PARKAIR
CP33 Series



40

PCL
Instant-Air Series Brass



31

PARKAIR
CP34 Series



41

PARKAIR
Airline Series

GENERAL PURPOSE COUPLINGS (NOT TO SCALE)

PAGE DESCRIPTION

**6 Series 220**

Flow Capacity: 580 l/min (20.5 CFM)
Temperature Range: -30°C to +100°C (-22°F to +212°F)
Working Pressure: 35 bar (507 psi)
Suitability: Pressure and Vacuum applications

**7 Series 300 eSafe**

Interchange: Series 210 Standard, Series 14 / 22
Flow Capacity: 1050 l/min (37.1 CFM)
Temperature Range: -20°C to +100°C (-4°F to +212°F)
Working Pressure: 16 bar (232 psi)
Suitability: Pressure applications only

**8 Series 310 eSafe**

Interchange: A-A 59439, ISO 6150B, Series 23 / 24
Flow Capacity: 950 l/min (33.5 CFM)
Temperature Range: -20°C to +100°C (-4°F to +212°F)
Working Pressure: 16 bar (232 psi)
Suitability: Pressure applications only

**9 Series 315 eSafe**

Interchange: Asian Standard, Series 13
Flow Capacity: 1950 l/min (68.9 CFM)
Temperature Range: -20°C to +100°C (-4°F to +212°F)
Working Pressure: 16 bar (232 psi)
Suitability: Pressure applications only

**10 Series 320 eSafe**

Interchange: Euro Standard 7.6 (7.4), Series 25
Flow Capacity: 2250 l/min (79.4 CFM)
Temperature Range: -20°C to +100°C (-4°F to +212°F)
Working Pressure: 16 bar (232 psi)
Suitability: Pressure applications only

**12 Series 326 eSafe Stainless steel**

Interchange: Euro Standard 7.6 (7.4), Series 25
Flow Capacity: 1800 l/min (63.5 CFM)
Temperature Range: -20°C to +100°C (-4°F to +212°F)
Working Pressure: 16 bar (232 psi)
Suitability: Pressure applications only

**13 Series 410 eSafe**

Interchange: Euro Standard 10.4, Series 27
Flow Capacity: 4000 l/min (141.2 CFM)
Temperature Range: -20°C to +100°C (-4°F to +212°F)
Working Pressure: 16 bar (232 psi)
Suitability: Pressure applications only

**14 Series 416 eSafe**

Flow Capacity: 4000 l/min (141.2 CFM)
Temperature Range: -20°C to +100°C (-4°F to +212°F)
Working Pressure: 16 bar (232 psi)
Suitability: Pressure applications only

**15 Series 430 eSafe**

Interchange: A-A 59439 (former US Standard MIL C 4109 3/8") ISO 6150B
Flow Capacity: 2500 l/min (88.3 CFM)
Temperature Range: -20°C to +100°C (-4°F to +212°F)
Working Pressure: 16 bar (232 psi)
Suitability: Pressure applications only

**16 Series 550 eSafe**

Interchange: A-A 59439 (former US Standard MIL C 4109 1/2") ISO 6150B
Flow Capacity: 4050 l/min (143.0 CFM)
Temperature Range: -20°C to +100°C (-4°F to +212°F)
Working Pressure: 16 bar (232 psi)
Suitability: Pressure applications only

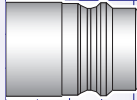
PNEUMATIC

BREATHING AIR

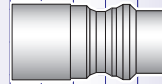
SERIES 220 PAGE No. 6
CEJN Original Standard



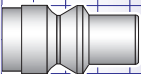
SERIES 410 PAGE No. 13
Interchange: Series 27



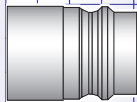
SERIES 341 PAGE No. 21



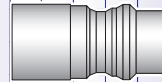
SERIES 300 PAGE No. 7
Interchange:
Series 210 Standard / Series 14



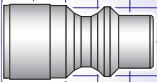
SERIES 416 PAGE No. 14



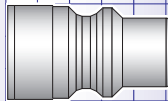
SERIES 342 PAGE No. 22
Interchange: Series 96



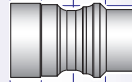
SERIES 310 PAGE No. 8
Interchange:
A-A 59439 / ISO 6150B / Series 23



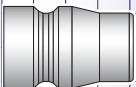
SERIES 430 PAGE No. 15
Interchange: US-Mil-C-4109 /
US Industrial Standard



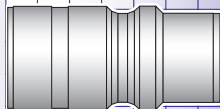
SERIES 344 PAGE No. 23



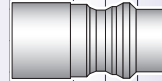
SERIES 315 PAGE No. 9
Asian Standard / Series 13



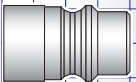
SERIES 550 PAGE No. 16
Interchange: US-Mil-C-4109 /
US Industrial Standard



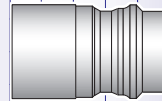
SERIES 345 PAGE No. 24



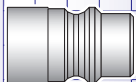
SERIES 320 PAGE No. 10
CEJN Original Standard
Interchange:
Euro Standard / Series 25



SERIES 442 PAGE No. 25



SERIES 326 STAINLESS STEEL
PAGE No. 12
CEJN Original Standard
Interchange: Euro Standard / Series 25



NOT TO SCALE
If you require further
information about
these products or any
other products in this
catalogue, please contact
your distributor.



With over 60 years' experience, CEJN has become the leading company in the product development of quick connect couplings. CEJN has become the industry's choice for quick connect couplings for all kinds of applications (i.e. Pneumatic, Breathing Air, Gases, Hydraulics, Fluids and other media).

Compressed Air



Breathing Air



Fluid



Series Number	220	300 eSafe	310 eSafe	315 eSafe	320 eSafe	326 eSafe	410 eSafe	416 eSafe
Page Number	6	7	8	9	10	12	13	14
Nominal flow diameter mm	5	5.5	5.3	7.5	7.6	7.6	10.4	10.4
Max. working pressure bar	35	16	16	16	16	16	16	16
Flow rate litres/min	580	1050	950	1950	2250	2250	4000	4000
One-way shut-off	Yes	Yes	Yes	Yes	Yes	Yes	Yes	Yes
Two-way shut-off	No	No	No	No	No	No	No	No
Straight through	No	No	No	No	No	No	No	No
Seal material	Nitrile	Nitrile	Nitrile	Nitrile	Nitrile	Nitrile	Nitrile	Nitrile
Applications								



Series Number	430 eSafe	550 eSafe	341	342	344	345	442
Page Number	15	16	21	22	23	24	25
Nominal flow diameter mm	8.2	11	7.4	7.4	7.4	6.2	10.4
Max. working pressure bar	16	16	35	35	35	35	35
Flow rate litres/min	2500	4050	1950	1950	1950	1100	3950
One-way shut-off	Yes	Yes	Yes	Yes	Yes	Yes	Yes
Two-way shut-off	No	No	No	No	No	No	No
Straight through	No	No	No	No	No	No	No
Seal material	Nitrile	Nitrile	Nitrile	Nitrile	Nitrile	Nitrile	Nitrile
Applications							

No more need to choose between performance and safety!

eSafe

The New Generation

- ⊕ Vented safety function
- ⊕ Extreme durability
- ⊕ Compact, easy to grip design
- ⊕ Highest flow on the market
- ⊕ Low pressure drop
- ⊕ Low connecting force
- ⊕ Easy handling



Be eSafe, not sorry!

SAFETY FUNCTION

eSafe vents the down streaming pressure before disconnection, reducing noise and risk of hose-whip.

EXTREME DURABILITY

Tests have shown that eSafe is extremely durable against impact, vibration and swivelling.

COMPACT DESIGN

eSafe is the first safety coupling on the market with the dimensions of a standard coupling.

HIGH FLOW

eSafe has the highest flow on the coupling market.

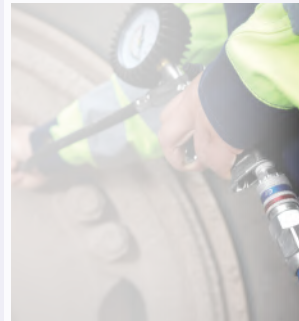
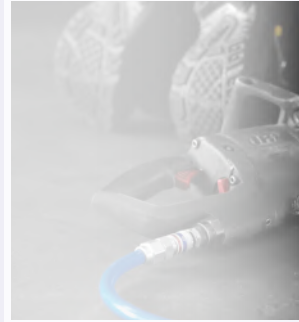
EASY HANDLING

eSafe is ergonomic and one hand operated; just pull the sleeve and the coupling will automatically vent before disconnecting.

ENERGY EFFICIENCY

Low pressure drop ensures maximum operation productivity.

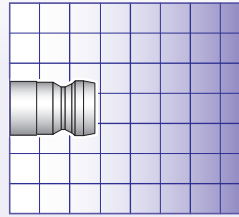
Please enquire about our free flowmeter test.





FEATURES	BENEFITS
<ul style="list-style-type: none"> • Compact and lightweight • High flow capacity • Small external dimensions • Suitable for vacuum 	<ul style="list-style-type: none"> • Fast, easy, one hand operation • Extremely efficient
SPECIFICATIONS	
Nominal flow diameter	5 mm (3/16")
Flow capacity	580 l/min (20.5 CFM)*
Max. working pressure	35 bar (507 psi)
Min. burst pressure	140 bar (2,030 psi)
Temperature range	-30°C to +100°C (-22°F to +212°F)
Coupling material	Nickel plated brass
Nipple material	Hardened zinc plated steel

NPT Threads are available.



Not actual size.

Single Shut-off



*Flow capacity measured at 6 bar (87 psi) inlet pressure and pressure drop at 0.5 bar (7 psi).

COUPLINGS



210

CEJN SERIES 220 HOSE BARB

PART NUMBER	CONNECTION	PRICE
C102201001	5 mm 3/16"	£21.02
C102201002	6 mm 1/4"	£17.41
C102201003	8 mm 5/16"	£18.03
C102201004	10 mm 3/8"	£18.03

NIPPLES



210

CEJN SERIES 220 HOSE BARB

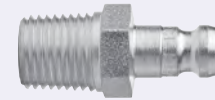
PART NUMBER	CONNECTION	PRICE
C102205001	5 mm 3/16"	£4.16
C102205002	6 mm 1/4"	£3.92
C102205003	8 mm 5/16"	£4.51
C102205004	10 mm 3/8"	£6.80



210

CEJN SERIES 220 MALE THREAD

PART NUMBER	CONNECTION	PRICE
C102201151	1/8" BSPT	£18.69
C102201152	1/4" BSPT	£18.69
C102201154	3/8" BSPT	£26.54



210

CEJN SERIES 220 MALE THREAD

PART NUMBER	CONNECTION	PRICE
C102205151	1/8" BSPT	£5.09
C102205152	1/4" BSPT	£5.17
C102205154	3/8" BSPT	£10.26



210

CEJN SERIES 220 FEMALE THREAD

PART NUMBER	CONNECTION	PRICE
C102201201	1/8" BSPP	£18.69
C102201202	1/4" BSPP	£18.69
C102201204	3/8" BSPP	£19.86

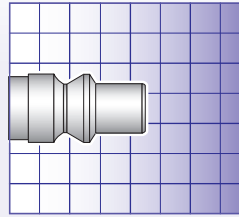


210

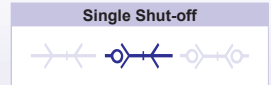
CEJN SERIES 220 FEMALE THREAD

PART NUMBER	CONNECTION	PRICE
C102205201	1/8" BSPP	£3.77
C102205202	1/4" BSPP	£4.51
C102205204	3/8" BSPP	£10.80

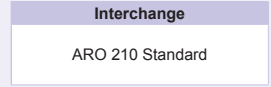
FEATURES	BENEFITS
<ul style="list-style-type: none"> • High flow capacity • Low connection force • Male threads on couplings / nipples feature pre-applied thread sealant • ISO Standard 4414 and EN 983 	<ul style="list-style-type: none"> • Fast, easy, one hand operation • Extremely energy efficient • Strong and durable for long life
SPECIFICATIONS	
Nominal flow diameter	5.5 mm (7/32")
Flow capacity	1050 l/min (37.1 CFM)*
Max. working pressure	16 bar (232 psi)
Min. burst pressure	140 bar (2030 psi)
Temperature range	-20°C to +100°C (-4°F to +212°F)
Coupling material	Zinc plated steel / brass
Coupling seal material	Nitrile
Nipple material	Hardened zinc plated steel
Connection force	86 N



Not actual size.



Single Shut-off



Interchange

ARO 210 Standard

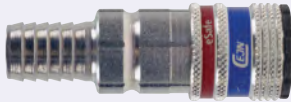
*Flow capacity measured at 6 bar (87 psi) inlet pressure and pressure drop at 0.5 bar (7 psi).

NPT Threads are available.

eSAFE VENTED SAFETY COUPLINGS

STANDARD NIPPLES

CEJN SERIES 300 HOSE BARB



246

PART NUMBER	CONNECTION	PRICE
C103002002	6.3 mm 1/4"	£22.74
C103002003	8 mm 5/16"	£22.74
C103002004	10 mm 3/8"	£22.74
C103002005	13 mm 1/2"	£23.40

CEJN SERIES 300 HOSE BARB



220

PART NUMBER	CONNECTION	PRICE
C103005002	6 mm 1/4"	£3.85
C103005003	8 mm 5/16"	£3.85
C103005004	10 mm 3/8"	£3.85

CEJN SERIES 300 MALE THREAD with Loctite Dry-Seal®



246

PART NUMBER	CONNECTION	PRICE
C103002152	1/4" BSPT	£22.74
C103002154	3/8" BSPT	£23.40
C103002155	1/2" BSPT	£23.40

CEJN SERIES 300 MALE THREAD with Loctite Dry-Seal®



220

PART NUMBER	CONNECTION	PRICE
C103005151	1/8" BSPT	£4.62
C103005152	1/4" BSPT	£2.53
C103005154	3/8" BSPT	£5.40
C103005155	1/2" BSPT	£9.75

CEJN SERIES 300 FEMALE THREAD



246

PART NUMBER	CONNECTION	PRICE
C103002202	1/4" BSPP	£22.74
C103002204	3/8" BSPP	£23.40
C103002205	1/2" BSPP	£23.40

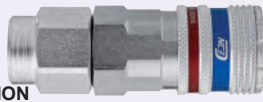
CEJN SERIES 300 FEMALE THREAD



220

PART NUMBER	CONNECTION	PRICE
C103005201	1/8" BSPP	£5.40
C103005202	1/4" BSPP	£3.77
C103005204	3/8" BSPP	£5.25

CEJN SERIES 300 STREAM-LINE CONNECTION



246

PART NUMBER	CONNECTION	PRICE
C103002060	6.5 x 10 mm	£26.04
C103002062	8 x 12 mm	£26.04
C103002063	9.5 x 13.5 mm	£26.62
C103002066	11 x 16 mm	£28.23

CEJN SERIES 300 STREAM-LINE CONNECTION



220

PART NUMBER	CONNECTION	PRICE
C103005060	6.5 x 10 mm	£8.16
C103005062	8 x 12 mm	£9.40
C103005063	9.5 x 13.5 mm	£20.25
C103005066	11 x 16 mm	£21.33

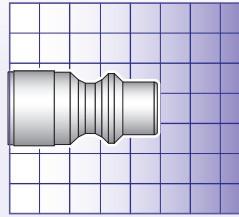
CEJN SERIES 300 SOFT-LINE CONNECTION



246

PART NUMBER	CONNECTION	PRICE
C103002080	6.5 x 10 mm	£41.34
C103002082	8 x 12 mm	£41.34

FEATURES	BENEFITS
<ul style="list-style-type: none"> • Pre-applied sealant on male threads • Vented safety function • Low connection force • Complies with ISO Standard 4414 and EN 983 	<ul style="list-style-type: none"> • Easy to grip • Fast one hand operation • Extremely energy efficient • Minimises the risk of sudden component separation
SPECIFICATIONS	
Nominal flow diameter	5.3 mm (7/32")
Flow capacity	950 l/min (33.5 CFM)*
Max. working pressure	16 bar (232 psi)
Min. burst pressure	140 bar (2030 psi)
Temperature range	-20°C to +100°C (-4°F to +212°F)
Coupling material	Zinc plated steel / brass
Coupling seal material	Nitrile
Nipple material	Hardened zinc plated steel
Connection force	86 N



Not actual size.

Single Shut-off



Interchange

ISO Standard 6150 B,
A-A 59439

*Flow capacity measured at 6 bar (87 psi) inlet pressure and pressure drop at 0.5 bar (7 psi).

NPT Threads are available.

eSAFE VENTED SAFETY COUPLINGS

CEJN SERIES 310
HOSE BARB

246

PART NUMBER	CONNECTION	PRICE
C103102002	6.3 mm 1/4"	£21.91
C103102003	8 mm 5/16"	£21.91
C103102004	10 mm 3/8"	£21.91
C103102005	13 mm 1/2"	£22.57

CEJN SERIES 310
MALE THREAD
with Loctite Dry-Seal®

246

PART NUMBER	CONNECTION	PRICE
C103102152	1/4" BSPT	£21.91
C103102154	3/8" BSPT	£21.91
C103102155	1/2" BSPT	£22.57

CEJN SERIES 310
FEMALE THREAD

246

PART NUMBER	CONNECTION	PRICE
C103102202	1/4" BSPP	£21.91
C103102204	3/8" BSPP	£21.91
C103102205	1/2" BSPP	£22.57

CEJN SERIES 310
STREAM-LINE CONNECTION

246

PART NUMBER	CONNECTION	PRICE
C103102058	5 x 8 mm	£25.22
C103102060	6.5 x 10 mm	£25.22
C103102062	8 x 12 mm	£25.22
C103102063	9.5 x 13.5 mm	£25.80
C103102066	11 x 16 mm	£27.41

CEJN SERIES 310
SOFT-LINE CONNECTION

246

PART NUMBER	CONNECTION	PRICE
C103102080	6.5 x 10 mm	£40.31
C103102082	8 x 12 mm	£40.31

STANDARD NIPPLES

CEJN SERIES 310
HOSE BARB

220

PART NUMBER	CONNECTION	PRICE
C103105001	5 mm 3/16"	£4.31
C103105002	6 mm 1/4"	£3.46
C103105003	8 mm 5/16"	£3.46
C103105004	10 mm 3/8"	£3.46
C103105005	13 mm 1/2"	£3.85

CEJN SERIES 310
MALE THREAD
with Loctite Dry-Seal®

220

PART NUMBER	CONNECTION	PRICE
C103105151	1/8" BSPT	£5.05
C103105152	1/4" BSPT	£3.46
C103105154	3/8" BSPT	£3.77

CEJN SERIES 310
FEMALE THREAD

220

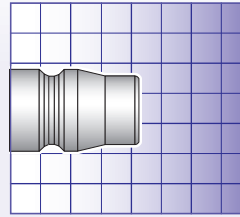
PART NUMBER	CONNECTION	PRICE
C103105201	1/8" BSPP	£5.40
C103105202	1/4" BSPP	£3.77
C103105204	3/8" BSPP	£4.59

CEJN SERIES 310
STREAM-LINE CONNECTION

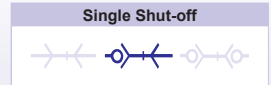
220

PART NUMBER	CONNECTION	PRICE
C103105058	5 x 8 mm	£8.16
C103105060	6.5 x 10 mm	£8.16
C103105062	8 x 12 mm	£9.40
C103105063	9.5 x 13.5 mm	£15.23
C103105066	11 x 16 mm	£16.63

FEATURES	BENEFITS
<ul style="list-style-type: none"> Vented safety function Extremely high flow capacity Compact design Smaller outside dimension than comparable designs 	<ul style="list-style-type: none"> Easy to handle One hand operation Fully automatic operation Extremely energy efficient
SPECIFICATIONS	
Nominal flow diameter	7.5 mm (5/16")
Flow capacity	1950 l/min (68.8 CFM)*
Max. working pressure	16 bar (232 psi)
Min. burst pressure	140 bar (2030 psi)
Temperature range	-20°C to +100°C (-4°F to +212°F)
Coupling material	Zinc plated steel/brass
Coupling seal material	Nitrile
Nipple material	Hardened zinc plated steel
Connection force	86 N



Not actual size.



*Flow capacity measured at 6 bar (87 psi) inlet pressure and pressure drop at 0.5 bar (7 psi).

NPT Threads are available.

eSAFE VENTED SAFETY COUPLINGS

CEJN SERIES 315 HOSE BARB



PART NUMBER	CONNECTION	PRICE
C103152002	6.3 mm 1/4"	£23.98
C103152043	7 mm 9/32"	£23.98
C103152004	10 mm 3/8"	£23.98
C103152005	13 mm 1/2"	£23.98

CEJN SERIES 315 MALE THREAD



PART NUMBER	CONNECTION	PRICE
C103152152	1/4" BSPT	£23.98
C103152154	3/8" BSPT	£23.98
C103152155	1/2" BSPT	£23.98



CEJN SERIES 315 FEMALE THREAD



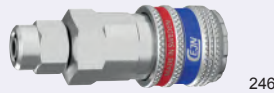
PART NUMBER	CONNECTION	PRICE
C103152202	1/4" BSPP	£23.98
C103152204	3/8" BSPP	£23.98

WITH LOCK RING

C103152244	3/8" BSPP	£41.92
------------	-----------	--------



CEJN SERIES 315 STREAM-LINE CONNECTION



PART NUMBER	CONNECTION	PRICE
C103152058	5 x 8 mm	£27.28
C103152060	6.5 x 10 mm	£27.28
C103152062	8 x 12 mm	£27.28
C103152063	9.5 x 13 mm	£27.86
C103152066	11 x 16 mm	£29.48

WITH LOCK RING

C103152090	6.5 x 10 mm	£44.44
C103152092	8 x 12 mm	£43.78
C103152096	11 x 16 mm	£49.94

CEJN SERIES 315 SOFT-LINE CONNECTION



PART NUMBER	CONNECTION	PRICE
C103152080	6.5 x 10 mm	£43.82
C103152082	8 x 12 mm	£43.41

STANDARD NIPPLES

CEJN SERIES 315 HOSE BARB



PART NUMBER	CONNECTION	PRICE
C103155002	6 mm 1/4"	£10.26
C103155043	7 mm 9/32"	£3.77
C103155004	10 mm 3/8"	£3.77
C103155005	13 mm 1/2"	£5.09

CEJN SERIES 315 MALE THREAD



PART NUMBER	CONNECTION	PRICE
C103155151	1/8" BSPT	£7.62
C103155152	1/4" BSPT	£3.46
C103155154	3/8" BSPT	£3.77
C103155155	1/2" BSPT	£6.96

CEJN SERIES 315 FEMALE THREAD



PART NUMBER	CONNECTION	PRICE
C103155102	1/4" BSPT	£4.20
C103155104	3/8" BSPT	£6.64
C103155105	1/2" BSPT	£8.82

CEJN SERIES 315 STREAM-LINE CONNECTION



PART NUMBER	CONNECTION	PRICE
C103155058	5 x 8 mm	£8.94
C103155060	6.5 x 10 mm	£8.94
C103155062	8 x 12 mm	£10.30
C103155063	9.5 x 13.5 mm	£15.47
C103155066	11 x 16 mm	£15.23

FEATURES

- Vented safety function
- Extremely high flow capacity
- Compact design
- Pre-applied sealant on male threads
- Smaller outside dimension than comparable designs

BENEFITS

- Easy to handle
- One hand operation
- Fully automatic operation
- Extremely energy efficient

SPECIFICATIONS

Nominal flow diameter	7.6 mm (5/16")
Flow capacity	2250 l/min (79.4 CFM)*
Max. working pressure	16 bar (232 psi)
Min. burst pressure	140 bar (2030 psi)
Connection force	86 N
Temperature range	-20°C to +100°C (-4°F to +212°F)
Coupling material	Zinc plated steel / brass
Coupling seal material	Nitrile
Nipple material	Hardened zinc plated steel

eSAFE VENTED SAFETY COUPLINGS

CEJN SERIES 320
HOSE BARB

PART NUMBER	CONNECTION	PRICE
C103202002	6 mm 1/4"	£21.91
C103202003	8 mm 5/16"	£21.91
C103202004	10 mm 3/8"	£21.91
C103202005	13 mm 1/2"	£22.57

CEJN SERIES 320
MALE THREAD
with Loctite Dry-Seal®

PART NUMBER	CONNECTION	PRICE
C103202152	1/4" BSPT	£21.91
C103202154	3/8" BSPT	£21.91
C103202155	1/2" BSPT	£22.57

New
Additions

CEJN SERIES 320
FEMALE THREAD

PART NUMBER	CONNECTION	PRICE
C103202202	1/4" BSPP	£21.91
C103202204	3/8" BSPP	£21.91
C103202205	1/2" BSPP	£22.57

WITH LOCK RING

C103202244	3/8" BSPP	£31.42
------------	-----------	--------

New
Additions

CEJN SERIES 320
STREAM-LINE CONNECTION

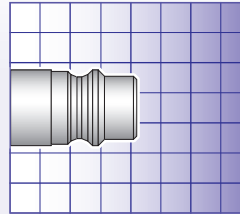
PART NUMBER	CONNECTION	PRICE
C103202058	5 x 8 mm	£25.22
C103202060	6.5 x 10 mm	£25.22
C103202062	8 x 12 mm	£25.22
C103202063	9.5 x 13.5 mm	£25.80
C103202066	11 x 16 mm	£27.41

WITH LOCK RING

C103202090	6.5 x 10 mm	£35.14
C103202092	8 x 12 mm	£35.14
C103202096	11 x 16 mm	£40.93

CEJN SERIES 320
SOFT-LINE CONNECTION

PART NUMBER	CONNECTION	PRICE
C103202080	6.5 x 10 mm	£38.24
C103202082	8 x 12 mm	£38.24



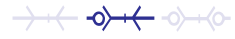
Not actual size.

*High Flow capacity.

*Flow capacity measured at 6 bar (87 psi) inlet pressure and pressure drop at 0.5 bar (7 psi).

NPT Threads are available.

Single Shut-off



Interchange

CEJN Original,
Eurostandard

STANDARD NIPPLES

CEJN SERIES 320
HOSE BARB

PART NUMBER	CONNECTION	PRICE
C103205001	5 mm 3/16"	£4.16
C103205002	6 mm 1/4"	£3.46
C103205003	8 mm 5/16"	£3.46
C103205004	10 mm 3/8"	£3.46
C103205005	13 mm 1/2"	£3.77

CEJN SERIES 320
MALE THREAD
with Loctite Dry-Seal®

PART NUMBER	CONNECTION	PRICE
C103205151	1/8" BSPT	£3.77
C103205152	1/4" BSPT	£3.46
C103205154	3/8" BSPT	£3.77
C103205155	1/2" BSPT	£6.30

CEJN SERIES 320
FEMALE THREAD

PART NUMBER	CONNECTION	PRICE
C103205201	1/8" BSPP	£5.09
C103205202	1/4" BSPP	£3.77
C103205204	3/8" BSPP	£4.47
C103205205	1/2" BSPP	£8.16

CEJN SERIES 320
STREAM-LINE CONNECTION

PART NUMBER	CONNECTION	PRICE
C103205058	5 x 8 mm	£8.16
C103205060	6.5 x 10 mm	£8.16
C103205062	8 x 12 mm	£9.40
C103205063	9.5 x 13.5 mm	£13.87
C103205066	11 x 16 mm	£13.87

CEJN SERIES 320
NIPPLE TO BSPT MALE
0.5 metre length

PART NUMBER	mm	ins	BSPT	bar	PRICE per assy.
H-GP06L320	6.0	1/4	1/4	20	£19.57
H-GP08L320	8.0	5/16	1/4	20	£21.06
H-GP10L320	10.0	3/8	3/8	20	£21.71
H-GP13L320	12.5	1/2	1/2	20	£20.80

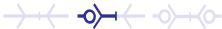
PNEUMATIC – 320 eSAFE MULTI-LINK SYSTEM

DESCRIPTION

With multiple outlets, Series 320 eSafe Multi-Link offers both flexibility and high performance. Available in 1 to 4 outlet units. A small unit can be expanded with extensions to create a larger unit with up to four outlets. Separate units can be easily connected. Combine with CEJN polyurethane hose and FRL units to create a safe and flexible high performance air distribution system. eSafe complies with ISO Standard 4414 and EN 983 and it offers standard features; one hand operated, high flow and long service life.

FEATURES	BENEFITS
<ul style="list-style-type: none"> • Compact multiple outlets • Outlets adjustable up to 180° 	<ul style="list-style-type: none"> • No assembly necessary • Safety function to reduce noise and prevent recoil accidents
SPECIFICATIONS	
Nominal flow diameter	7.6 mm (5/16")
Max. working pressure	16 bar (232 psi)
Min. burst pressure	64 bar (928 psi)
Temperature range	-20°C to +100°C (-4°F to +212°F)
Material	Zinc plated steel / zinc
Media	Compressed air, neutral gas
Connection	1/2" BSPP Female thread

Single Shut-off



CEJN MULTI-LINK eSAFE SERIES 320

246

PART NUMBER	CONNECTION	NO. OF OUTLETS	PRICE
C199029200	1/2" BSPP	Extension unit	£36.05
C199029201	1/2" BSPP	1	£74.49
C199029202	1/2" BSPP	2	£102.65
C199029203	1/2" BSPP	3	£130.80
C199029204	1/2" BSPP	4	£158.95
C199029205	1/2" BSPP	5	£187.10

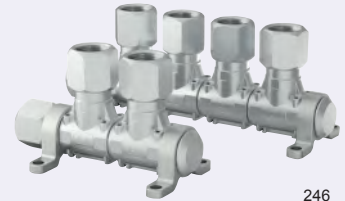
PNEUMATIC – FEMALE ADAPTOR MULTI-LINK SYSTEM

DESCRIPTION

With multiple outlets, female adaptor Multi-Link offers both flexibility and high performance. Available in 1 to 5 outlet units with threaded 1/2" outlets. A small unit can be expanded with extensions to create a larger unit with up to four outlets. Separate units can be easily connected. Combine with CEJN polyurethane hose and FRL units to create a flexible high performance air distribution system.

FEATURES	BENEFITS
<ul style="list-style-type: none"> • Compact multiple outlets • Ready-made units, no assembly necessary • Outlets adjustable up to 180° 	<ul style="list-style-type: none"> • No assembly necessary • Safety function to reduce noise and prevent recoil accidents
SPECIFICATIONS	
Nominal flow diameter	10 mm (7/32")
Max. working pressure	12 bar (174 psi)
Min. burst pressure	48 bar (696 psi)
Temperature range	-20°C to +100°C (-4°F to +212°F)
Material	Zinc plated steel / zinc
Media	Compressed air, neutral gas
Connection	1/2" BSPP Female thread

Single Shut-off



CEJN MULTI-LINK FEMALE ADAPTOR

246

PART NUMBER	CONNECTION	NO. OF OUTLETS	PRICE
C199029990	1/2" BSPP	Extension unit	£32.64
C199029991	1/2" BSPP	1	£70.57
C199029992	1/2" BSPP	2	£97.89
C199029993	1/2" BSPP	3	£125.17
C199029994	1/2" BSPP	4	£152.44
C199029995	1/2" BSPP	5	£179.72

SOFT-LINE COVERS & ASSEMBLY TOOL

DESCRIPTION

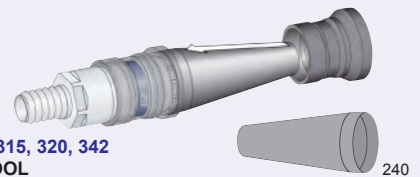
Three accessories are included in the Soft-Line range: accessory covers, assembly tool and kink protectors. The accessory covers are designed to be added onto couplings to "soften" the edges of quick connect couplings, making them non-abrasive and less likely to cause damage to surrounding components and surfaces. Additionally, the covers also protect couplings from impact, thus prolonging their service life. The covers can be fitted on any regular series 300, 303, 310, 315 and 320 coupling. An assembly tool is delivered with the covers but can also be ordered separately. Kink-protectors can be used on all Stream-Line connections with the corresponding hose size. Kink protectors are sold separately and can be replaced during use with the cap nut on the Stream-Line connection.



CEJN SERIES 300, 303, 310, 315, 320, 342 SOFT-LINE COVERS

240

PART NUMBER	CONTENTS	PRICE
C199007001	Accessory style covers (10 per pack)	£58.99



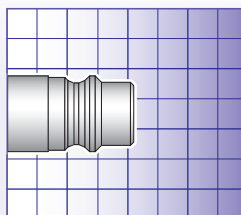
CEJN SERIES 300, 303, 310, 315, 320, 342 ASSEMBLY TOOL

240

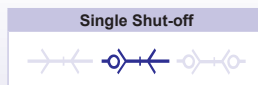
PART NUMBER	DESCRIPTION	PRICE
C199007051	Assembly Tool	POA



FEATURES		BENEFITS	
<ul style="list-style-type: none"> Vented safety function Extremely high flow capacity Compact design Pre-applied sealant on male threads Smaller outside dimension than comparable designs 		<ul style="list-style-type: none"> Easy to handle One hand operation Fully automatic operation Extremely energy efficient 	
SPECIFICATIONS			
Nominal flow diameter	7.6 mm (5/16")		
Flow capacity	1800 l/min (63.5 CFM)*		
Max. working pressure	16 bar (232 psi)		
Min. burst pressure	140 bar (2030 psi)		
Connection force	86 N		
Temperature range	-20°C to +100°C (-4°F to +212°F)		
Coupling material	Hardened stainless steel (AISI 316)		
Coupling seal material	Nitrile		
Nipple material	Stainless steel (AISI 316)		



Not actual size.



***High Flow capacity**
 *Flow capacity measured at 6 bar (87 psi) inlet pressure and pressure drop at 0.5 bar (7 psi).

eSAFE VENTED SAFETY COUPLINGS

STANDARD NIPPLES

CEJN SERIES 326 HOSE BARB



PART NUMBER	CONNECTION	PRICE
C103262004	10 mm	£133.11

CEJN SERIES 326 HOSE BARB



PART NUMBER	CONNECTION	PRICE
C103265002	6.3 mm 1/4"	POA
C103265003	8 mm 5/16"	POA
C103265004	10 mm 3/8"	POA

CEJN SERIES 326 MALE THREAD



PART NUMBER	CONNECTION	PRICE
C103262152	1/4" BSPT	£145.10
C103262452	1/4" NPT	£145.10
C103262154	3/8" BSPT	£146.34
C103262155	1/2" BSPT	£159.16

CEJN SERIES 326 MALE THREAD



PART NUMBER	CONNECTION	PRICE
C103265152	1/4" BSPT	£37.07
C103265154	3/8" BSPT	POA

CEJN SERIES 326 FEMALE THREAD



PART NUMBER	CONNECTION	PRICE
C103262202	1/4" BSPP	£145.10
C103262402	1/4" NPT	£145.10
C103262204	3/8" BSPP	£147.17
C103262205	1/2" BSPP	£164.94

CEJN SERIES 326 FEMALE THREAD – UNVALVED



PART NUMBER	CONNECTION	PRICE
C103265232	1/4" BSPP	£35.21
C103265204	3/8" BSPP	POA
C103265205	1/2" BSPP	POA

CEJN SERIES 326 STREAM-LINE CONNECTION



PART NUMBER	CONNECTION	PRICE
C103262062	8 x 12 mm	£167.84

CEJN SERIES 326 STREAM-LINE CONNECTION

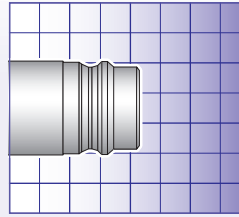


PART NUMBER	CONNECTION	PRICE
C103265062	8 x 12 mm	POA

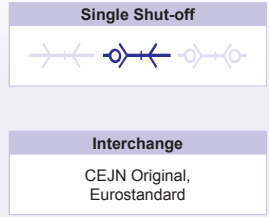


FEATURES	BENEFITS
<ul style="list-style-type: none"> Extremely high flow capacity Compact design 	<ul style="list-style-type: none"> Fast, easy, one hand operation High performance Strong and durable for long life
SPECIFICATIONS	
Nominal flow diameter	10.4 mm (13/32")
Air flow	4000 l/min (141.2 CFM)
Max. working pressure	16 bar (232 psi)
Min. burst pressure	140 bar (2030 psi)
Temperature range	-20°C to +100°C (-4°F to +212°F)
Coupling material	Zinc plated steel / brass
Nipple material	Hardened zinc plated steel
Connection force	140 N

NPT Threads are available.



Not actual size.



*Flow capacity measured at 6 bar (87 psi) inlet pressure and pressure drop at 0.5 bar (7 psi).

eSAFE VENTED SAFETY COUPLINGS

CEJN SERIES 410 HOSE CONNECTION



PART NUMBER	CONNECTION	PRICE
C104102004	10 mm 3/8"	£42.99
C104102005	13 mm 1/2"	£42.99
C104102006	16 mm 5/8"	£44.44
C104102007	19 mm 3/4"	£44.44

CEJN SERIES 410 MALE THREAD



PART NUMBER	CONNECTION	PRICE
C104102154	3/8" BSPT	£42.99
C104102155	1/2" BSPT	£42.99
C104102157	3/4" BSPT	£44.44

CEJN SERIES 410 FEMALE THREAD



PART NUMBER	CONNECTION	PRICE
C104102204	3/8" BSPP	£44.65
C104102205	1/2" BSPP	£44.65
C104102207	3/4" BSPP	£47.33

CEJN SERIES 410 STREAM-LINE CONNECTION



PART NUMBER	CONNECTION	PRICE
C104102066	11.0 x 16.0 mm	£48.49
C104102068	13.0 x 18.0 mm	£54.03

CEJN SERIES 410 SOFT-LINE CONNECTION



PART NUMBER	CONNECTION	PRICE
C104102080	6.5 x 10 mm	POA
C104102082	8 x 12 mm	POA

STANDARD NIPPLES

CEJN SERIES 410 HOSE BARB



PART NUMBER	CONNECTION	PRICE
C104105002	6 mm 1/4"	£5.09
C104105003	8 mm 5/16"	£5.95
C104105004	10 mm 3/8"	£5.09
C104105005	13 mm 1/2"	£5.09
C104105006	16 mm 5/8"	£5.87
C104105007	19 mm 3/4"	£6.88

CEJN SERIES 410 MALE THREAD with Loctite Dry-Seal®



PART NUMBER	CONNECTION	PRICE
C104105152	1/4" BSPT	£5.09
C104105154	3/8" BSPT	£5.09
C104105155	1/2" BSPT	£6.96
C104105157	3/4" BSPT	£10.06

CEJN SERIES 410 FEMALE THREAD



PART NUMBER	CONNECTION	PRICE
C104105202	1/4" BSPP	£5.75
C104105204	3/8" BSPP	£6.88
C104105205	1/2" BSPP	£8.16
C104105207	3/4" BSPP	£16.94

CEJN SERIES 410 STREAM-LINE CONNECTION



PART NUMBER	CONNECTION	PRICE
C104105066	11 x 16 mm	£21.72
C104105068	13 x 18 mm	£35.71

CEJN SERIES 410 NIPPLE TO BSPT MALE 0.5 metre length

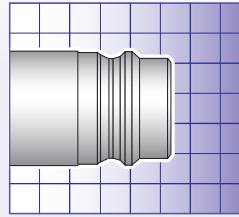


PART NUMBER	mm	ins	BSPT	bar	PRICE per assy.
H-GP13L410	12.5	1/2	1/2	20	£27.30
H-GP19L410	19.0	3/4	3/4	20	£35.10



FEATURES	BENEFITS
<ul style="list-style-type: none"> Vented safety function Extremely high flow capacity Durable and robust for tough environments 	<ul style="list-style-type: none"> Easy to handle One hand operation Built-in safety function to avoid pneumatic recoil
SPECIFICATIONS	
Nominal flow diameter	10.4 mm (13/32")
Flow capacity	4000 l/min (141.2 CFM)*
Max. working pressure	16 bar (232 psi)
Min. burst pressure	140 bar (2030 psi)
Temperature range	-20°C to +100°C (-4°F to +212°F)
Coupling material	Hardened stainless steel (AISI 316)
Nipple material	Stainless steel (AISI 316)
Connection force	140 N

NPT Threads are available.



Not actual size.

Single Shut-off



*Flow capacity measured at 6 bar (87 psi) inlet pressure and pressure drop at 0.5 bar (7 psi).

eSAFE VENTED SAFETY COUPLINGS

New

CEJN SERIES 416 HOSE BARB 246

PART NUMBER	CONNECTION	PRICE
C104162005	13 mm 1/2"	£205.95
C104162007	19 mm 3/4"	£221.50

New

CEJN SERIES 416 MALE THREAD 246

PART NUMBER	CONNECTION	PRICE
C104162155	1/2" BSPT	£205.95
C104162157	3/4" BSPT	£229.27
C104162255	1/2" BSPP	£225.38
C104162257	3/4" BSPP	£248.70

New

CEJN SERIES 416 FEMALE THREAD 246

PART NUMBER	CONNECTION	PRICE
C104162204	3/8" BSPP	£205.95
C104162205	1/2" BSPP	£221.50

New

CEJN SERIES 416 STREAM-LINE CONNECTION 246

PART NUMBER	CONNECTION	PRICE
C104162066	11 x 16 mm	£264.24

STANDARD NIPPLES

New

CEJN SERIES 416 HOSE BARB 260

PART NUMBER	CONNECTION	PRICE
C104165004	10 mm 3/8"	POA
C104165005	13 mm 1/2"	POA
C104165007	19 mm 3/4"	POA

New

CEJN SERIES 416 MALE THREAD 260

PART NUMBER	CONNECTION	PRICE
C104165155	1/2" BSPT	POA
C104165254	3/8" BSPP	POA
C104165255	1/2" BSPP	POA
C104165257	3/4" BSPP	POA

New

CEJN SERIES 416 FEMALE THREAD 260

PART NUMBER	CONNECTION	PRICE
C104165204	3/8" BSPP	POA
C104165207	1/2" BSPP	POA

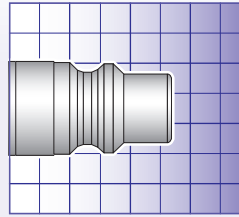
New

CEJN SERIES 416 STREAM-LINE CONNECTION 260

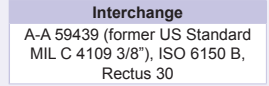
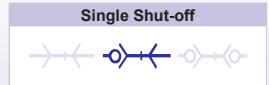
PART NUMBER	CONNECTION	PRICE
C104165066	11 x 16 mm	POA

FEATURES	BENEFITS
<ul style="list-style-type: none"> Vented safety function Extremely high flow capacity Compact design Smaller outside dimension than comparable designs 	<ul style="list-style-type: none"> Easy to handle One hand operation Fully automatic operation
SPECIFICATIONS	
Nominal flow diameter	8.2 mm (5/16")
Flow capacity	2500 l/min (88.3 CFM)*
Max. working pressure	16 bar (232 psi)
Min. burst pressure	140 bar (2030 psi)
Temperature range	-20°C to +100°C (-4°F to +212°F)
Coupling material	Zinc plated steel/brass
Coupling seal material	Nitrile
Nipple material	Hardened zinc plated steel
Connection force	132 N

NPT Threads are available.



Not actual size.



*Flow capacity measured at 6 bar (87 psi) inlet pressure and pressure drop at 0.5 bar (7 psi).

eSafe is a one hand operated safety coupling that vents before disconnection, eliminating the risk of hose whip. The couplings have a smaller outside dimension than comparable designs. Full automatic operation ensures easy handling. eSafe complies with ISO Standard 4414 and EN 983.

eSAFE VENTED SAFETY COUPLINGS

CEJN SERIES 430 HOSE BARB



PART NUMBER	CONNECTION	PRICE
C104302004	10 mm 3/8"	£42.58
C104302005	13 mm 1/2"	£42.58
C104302006	16 mm 5/8"	£44.03
C104302007	19 mm 3/4"	£44.03

CEJN SERIES 430 MALE THREAD



PART NUMBER	CONNECTION	PRICE
C104302154	3/8" BSPT	£42.58
C104302155	1/2" BSPT	£42.58
C104302157	3/4" BSPT	£44.44

CEJN SERIES 430 FEMALE THREAD



PART NUMBER	CONNECTION	PRICE
C104302204	3/8" BSPP	£42.58
C104302205	1/2" BSPP	£42.58
C104302207	3/4" BSPP	£44.44

CEJN SERIES 430 STREAM-LINE CONNECTION



PART NUMBER	CONNECTION	PRICE
C104302066	11 x 16 mm	£48.08



CEJN SERIES 430 SOFT-LINE CONNECTION



PART NUMBER	CONNECTION	PRICE
C104302080	6.5 x 10 mm	POA
C104302082	8 x 12 mm	POA

STANDARD NIPPLES

CEJN SERIES 430 HOSE BARB



PART NUMBER	CONNECTION	PRICE
C104305002	6 mm 1/4"	£7.07
C104305003	8 mm 5/16"	£15.31
C104305004	10 mm 3/8"	£5.67
C104305005	13 mm 1/2"	£5.01
C104305006	16 mm 5/8"	£7.03

CEJN SERIES 430 MALE THREAD



PART NUMBER	CONNECTION	PRICE
C104305152	1/4" BSPT	£7.42
C104305154	3/8" BSPT	£7.42
C104305155	1/2" BSPT	£11.85
C104305157	3/4" BSPT	£12.43

CEJN SERIES 430 FEMALE THREAD



PART NUMBER	CONNECTION	PRICE
C104305202	1/4" BSPP	£7.42
C104305204	3/8" BSPP	£14.22
C104305205	1/2" BSPP	£16.32
C104305207	3/4" BSPP	£19.82

CEJN SERIES 430 STREAM-LINE CONNECTION

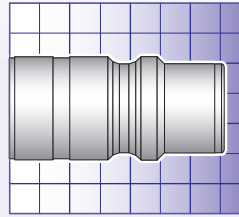


PART NUMBER	CONNECTION	PRICE
C104305066	11 x 16 mm	£25.30



FEATURES	BENEFITS
<ul style="list-style-type: none"> Vented safety function Extremely high flow capacity Compact design Smaller outside dimension than comparable designs 	<ul style="list-style-type: none"> Easy to handle One hand operation Fully automatic operation
SPECIFICATIONS	
Nominal flow diameter	11 mm (7/16")
Flow capacity	4050 l/min (143.0 CFM)
Max. working pressure	16 bar (232 psi)
Min. burst pressure	140 bar (2030 psi)
Temperature range	-20°C to +100°C (-4°F to +212°F)
Coupling material	Zinc plated steel / brass
Coupling seal material	Nitrile
Nipple material	Hardened zinc plated steel
Connection force	152 N

NPT Threads are available.



Not actual size.

Single Shut-off



Interchange

A-A 59439 (former US Standard MIL C 4109 1/2")
ISO 6150 B

*Flow capacity measured at 6 bar (87 psi) inlet pressure and pressure drop at 0.5 bar (7 psi).

eSafe is a one hand operated safety coupling that vents before disconnection, eliminating the risk of hose whip. Male threads on the couplings and nipples feature pre-applied thread sealant. The couplings have a smaller outside dimension than comparable designs. Full automatic operation ensures easy handling. eSafe complies with ISO Standard 4414 and EN 983.

eSAFE VENTED SAFETY COUPLINGS

STANDARD NIPPLES

CEJN SERIES 550 HOSE BARB



PART NUMBER	CONNECTION	PRICE
C105502004	10 mm 3/8"	£64.08
C105502005	13 mm 1/2"	£64.08
C105502007	19 mm 3/4"	£67.38

CEJN SERIES 550 HOSE BARB



PART NUMBER	CONNECTION	PRICE
C105505004	10 mm 3/8"	£20.21
C105505005	13 mm 1/2"	£6.88
C105505007	19 mm 3/4"	£13.95

CEJN SERIES 550 MALE THREAD



PART NUMBER	CONNECTION	PRICE
C105502154	3/8" BSPT	£64.08
C105502155	1/2" BSPT	£64.08
C105502157	3/4" BSPT	£68.62

CEJN SERIES 550 MALE THREAD



PART NUMBER	CONNECTION	PRICE
C105505152	1/4" BSPT	£10.34
C105505154	3/8" BSPT	£10.34
C105505155	1/2" BSPT	£17.60
C105505157	3/4" BSPT	£13.83

CEJN SERIES 550 FEMALE THREAD



PART NUMBER	CONNECTION	PRICE
C105502204	3/8" BSPP	£64.08
C105502205	1/2" BSPP	£64.08
C105502207	3/4" BSPP	£68.62

CEJN SERIES 550 FEMALE THREAD



PART NUMBER	CONNECTION	PRICE
C105505204	3/8" BSPP	£14.22
C105505205	1/2" BSPP	£11.27

New

CEJN SERIES 550 SOFT-LINE CONNECTION



PART NUMBER	CONNECTION	PRICE
C105502080	6.5 x 10 mm	POA
C105502082	8 x 12 mm	POA

STREAM-LINE ADAPTORS AND ACCESSORIES

CEJN SERIES 958 SWIVEL MALE STREAM-LINE ADAPTOR



285

PART NUMBER	CONNECTION	HOSE ID X OD	PRICE
C199580877	1/4" BSPT	5.0 x 8.0 mm	£6.96
C199581077	1/4" BSPT	6.5 x 10.0 mm	£7.42
C199581277	1/4" BSPT	8.0 x 12.0 mm	£9.68
C199581279	3/8" BSPT	8.0 x 12.0 mm	£10.14
C199581377	1/4" BSPT	9.5 x 13.5 mm	£13.79
C199581379	3/8" BSPT	9.5 x 13.5 mm	£13.33
C199581687	1/2" BSPT	11.0 x 16.0 mm	£17.49

CEJN SERIES 958 MALE STREAM-LINE ADAPTOR



285

PART NUMBER	CONNECTION	HOSE ID X OD	PRICE
C199580812	1/4" BSPT	5.0 x 8.0 mm	£6.06
C199581012	1/4" BSPT	6.5 x 10.0 mm	£6.14
C199581212	1/4" BSPT	8.0 x 12.0 mm	£8.47
C199581214	3/8" BSPT	8.0 x 12.0 mm	£9.79
C199581312	1/4" BSPT	9.5 x 13.5 mm	£10.10
C199581314	3/8" BSPT	9.5 x 13.5 mm	£11.07
C199581615	1/2" BSPT	11.0 x 16.0 mm	£12.75

DESCRIPTION

Kink protectors can be used on all Stream-Line couplings and nipples with the corresponding hose size. Kink protectors are sold separately and can be replaced during use with the cap nut on the Stream-Line connection.

CEJN SERIES 300 KINK PROTECTOR



285

PART NUMBER	HOSE ID X OD	PRICE
C103004012	8.0 x 12.0 mm	£8.94

SPIRAL ANTI-SPARK POLYURETHANE TUBE

SUITABILITY

- Welding environments
- Assembly lines, fixed workplaces
- Breathing air applications

FEATURES / BENEFITS

- Low friction
- Spark and scorch resistant
- Excellent resistance to oils, solvents and other non-aqueous solutions
- Long service life with outstanding ageing qualities
- Excellent recoil ability

SPECIFICATIONS

Temperature range	-30°C to +60°C
Pressure rating	Values given are based on the short term burst pressure of CEJN Spiral Anti-spark hose at 20°C using a 3:1 safety factor. NOTE: Any increase in temperature above 20°C will result in a decline in the working pressure values.
Construction	Ester based polyurethane.
Applicable standards	EN14594:2005 when used with approved breathing air filters.



CEJN – SPIRAL 3 3/8" MANDREL SIZE



285

PART NUMBER	mm	mm	mtrs	bar	PRICE per coil
C199584020	6.5	10.0	2	10	£9.25
C199584040	6.5	10.0	4	10	£18.38
C199584060	6.5	10.0	6	10	£27.63
C199584080	6.5	10.0	8	10	£36.80

4 1/4" MANDREL SIZE

C199584220	8.0	12.0	2	10	£12.59
C199584240	8.0	12.0	4	10	£25.37
C199584260	8.0	12.0	6	10	£38.00
C199584280	8.0	12.0	8	10	£50.67

STRAIGHT BRAIDED ANTI-SPARK PUR HOSE

FEATURES

- Spark and scorch resistant
- Excellent resistance to oils, solvents, and other non-aqueous solutions
- Long service life with outstanding aging qualities
- Light and flexible
- High impact strength, as well as high tensile and tear strength

SPECIFICATIONS

Temperature range	-30°C to +60°C
Construction	Ester-based polyurethane reinforced with polyester fiber



New

STRAIGHT BRAIDED ANTI-SPARK PUR HOSE 50 METRE COILS

285

PART NUMBER	mm	mm	bar	PRICE per coil
C199581230	8.0	12.0	14	£313.00
C199581330	9.5	13.5	12	£371.00
C199581637	11.0	16.0	12	£530.50

SPIRAL POLYURETHANE TUBE

SUITABILITY	FEATURES / BENEFITS
• Compressed Air	<ul style="list-style-type: none"> • Light and flexible • Low friction • Excellent resistance to oil, solvent and other non-aqueous solutions • Excellent recoil ability and crimp resistance • Long service life with outstanding ageing qualities • Excellent abrasion resistance

SPECIFICATIONS	
Temperature range	-30°C to +60°C
Pressure rating	Values given are based on the short term burst pressure of CEJN Spiral hose at 20°C using a 3:1 safety factor. NOTE: Any increase in temperature above 20°C will result in a decline in the working pressure values.
Construction	Ester based, non-braided polyurethane.

CEJN SPIRAL – BLUE 42CM MANDREL SIZE



285

PART NUMBER	mm	mm	mtrs	bar	PRICE per coil
C19958B5820	5.0	8.0	2	10	£5.91
C19958B5840	5.0	8.0	4	10	£11.74
C19958B5860	5.0	8.0	6	10	£17.49
C19958B5880	5.0	8.0	8	10	£23.63

52CM MANDREL SIZE

C19958B6020	6.5	10.0	2	10	£8.78
C19958B6040	6.5	10.0	4	10	£17.49
C19958B6060	6.5	10.0	6	10	£26.35
C19958B6080	6.5	10.0	8	10	£35.01

CEJN SPIRAL – BLUE 65CM MANDREL SIZE



285

PART NUMBER	mm	mm	mtrs	bar	PRICE per coil
C19958B6220	8.0	12.0	2	10	£12.59
C19958B6240	8.0	12.0	4	10	£25.30
C19958B6260	8.0	12.0	6	10	£38.00
C19958B6280	8.0	12.0	8	10	£50.98

95CM MANDREL SIZE

C19958B6620	11.0	16.0	2	10	£22.19
C19958B6640	11.0	16.0	4	10	£44.69
C19958B6660	11.0	16.0	6	10	£66.80
C19958B6680	11.0	16.0	8	10	£88.52

PUR HOSE KITS

SUITABILITY	FEATURES / BENEFITS
• Compressed Air	<ul style="list-style-type: none"> • Light and flexible • Low friction hose • Excellent resistance to oil, solvent and other non-aqueous solutions • Excellent recoil ability and crimp resistance • Long service life with outstanding ageing qualities • Excellent abrasion resistance • Also available in 300, 310, 315, 320 & 410 series

SPECIFICATIONS	
Temperature range	-30°C to +60°C
Pressure rating	Values given are based on the short term burst pressure of CEJN PUR hose at 20°C using a 3:1 safety factor. NOTE: Any increase in temperature above 20°C will result in a decline in the working pressure values.
Construction	Spiral PUR. Ester-based, non braided polyurethane. Assembled with stream-line couplings, nipples and swivels.

Made to order.



CEJN PUR HOSE KITS – BLUE SPIRAL HOSE WITH BSPT FIXED ADAPTORS

285

PART NUMBER	mm	mm	mtrs	bar	BSPP	PRICE per kit
C199589987	6.5	10	2	16	1/4	£21.14
C199589325	5.0	8	2	16	1/4	£40.88
C199589988	6.5	10	4	16	1/4	£29.84
C199589805	8.0	12	4	16	3/8	£44.53
C199589885	11.0	16	4	16	1/2	£70.22
C199589955	6.5	10	6	16	1/4	£38.70
C199589804	8.0	12	6	16	3/8	£57.28
C199589801	8.0	12	8	16	3/8	£70.26
C199589862	11.0	16	8	16	1/2	£114.01

Made to order.



CEJN PUR HOSE KITS – BLUE SPIRAL HOSE WITH BSPT SWIVEL ADAPTORS

285

PART NUMBER	mm	mm	mtrs	bar	BSPP	PRICE per kit
C199589978	5.0	8	2	16	1/4	£19.78
C199589947	6.5	10	2	16	1/4	£32.87
C199589997	8.0	12	2	16	3/8	£32.87
C199589965	5.0	8	4	16	1/4	£25.61
C199589949	6.5	10	4	16	1/4	£32.33
C199589967	8.0	12	4	16	3/8	£50.24
C199589810	11.0	16	4	16	1/2	£79.70
C199589954	6.5	10	6	16	1/4	£41.23
C199589998	8.0	12	6	16	3/8	£62.91
C199589957	6.5	10	8	16	1/4	£49.82
C199589809	8.0	12	8	16	3/8	£75.93
C199589346	11.0	16	8	16	1/2	£152.87

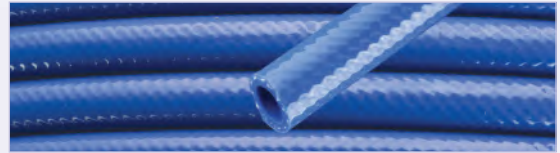
STRAIGHT BRAIDED PUR HOSE

FEATURES

- Light and flexible
- Excellent resistance to oil, solvents, and other non-aqueous solutions
- Long service life with outstanding ageing qualities
- For applications requiring a maximum working pressure up to 16 bar (232 psi)
- Offers a wide temperature range and high tensile, tear, and impact strength
- The hose easily springs back to its original form and has excellent abrasion resistance

SPECIFICATIONS

Temperature range	-30°C to +60°C
Construction	Ester based polyurethane reinforced with polyester fibre



New

**STRAIGHT BRAIDED PUR HOSE
50 METRE COILS**



285

**STRAIGHT BRAIDED PUR HOSE
100 METRE COILS**



285

PART NUMBER	mm	mm	bar	PRICE per coil
C199581000	6.5	10.0	16	£375.00
C199581200	8.0	12.0	16	£505.00
C199581350	9.5	13.5	16	£707.00
C199581600	11.0	16.0	12	£1018.00

PART NUMBER	mm	mm	bar	PRICE per coil
C199581020	6.5	10.0	16	£187.57
C199581220	8.0	12.0	16	£252.27
C199581370	9.5	13.5	16	£353.62
C199581638	11.0	16.0	12	£508.86
C199581801	13.0	18.0	10	£588.64
C199582100	16.0	21.0	10	£969.53
C199582400	19.0	24.0	10	£581.91

STRAIGHT BRAIDED HI-VIS PUR HOSE



FEATURES

- High visibility colour to prevent tripping accidents and injuries
- Light and flexible
- Excellent resistance to oil, solvents, and other non-aqueous solutions
- Long service life with outstanding ageing qualities
- For applications requiring a maximum working pressure up to 16 bar (232 psi)
- Offers a wide temperature range and high tensile, tear and impact strength
- The hose easily springs back to its original form and has excellent abrasion resistance

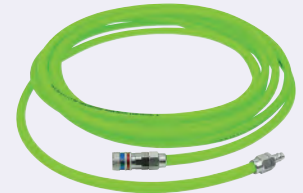
SPECIFICATIONS

Temperature range	-30°C to +60°C
Construction	Ester based polyurethane reinforced with polyester fibre

New

**STRAIGHT BRAIDED HI-VIS
PUR HOSE WITH 320 eSAFE FITTINGS
10 METRE COILS**

Made to order.



285

PART NUMBER	mm	mm	bar	PRICE per assy.
C199582088	8.0	12.0	16	POA

14 METRE COILS

C199582168	9.5	13.5	12	POA
------------	-----	------	----	-----

New

**STRAIGHT BRAIDED
HI-VIS PUR HOSE
100 METRE COILS**



285

PART NUMBER	mm	mm	bar	PRICE per coil
C199581288	8.0	12.0	16	£528.48
C199581388	9.5	13.5	16	£742.21

50 METRE COILS

C199581688	11.0	16.0	12	£534.31
C199581888	13.0	18.0	10	£617.86

New

**STRAIGHT BRAIDED
HI-VIS PUR HOSE
WITH 1/4" BSPT FITTINGS
10 METRE COILS**

Made to order.



285

PART NUMBER	mm	mm	bar	PRICE per assy.
C199582028	8.0	12.0	16	POA

**WITH 3/8" BSPT FITTINGS
14 METRE COILS**

C199582138	9.5	13.5	12	POA
------------	-----	------	----	-----

STRAIGHT NON-BRAIDED PUR HOSE

FEATURES

- Light and flexible
- Excellent resistance to oil, solvents, and other non-aqueous solutions
- Long service life with outstanding ageing qualities
- For applications requiring a maximum working pressure up to 10 bar (145 psi)
- Offers a high tensile, tear, and impact strength
- The hose easily springs back to its original form

SPECIFICATIONS

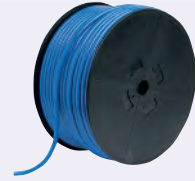
Temperature range	-30°C to +60°C
Construction	FDA approved ester based polyurethane

Supplied in full coils only.

New

STRAIGHT NON-BRAIDED PUR HOSE

50 METRE COILS



285

PART NUMBER	mm	mm	bar	PRICE per coil
C199580702	4.0	6.0	10	£71.89
C199580802	5.0	8.0	10	£101.03
C199581002	6.5	10.0	10	£153.49
C199581202	8.0	12.0	10	£209.84
C199581602	11.0	16.0	10	£363.33

STRAIGHT BRAIDED WATER PUR HOSE

FEATURES

- Light and flexible
- Excellent resistance to oils, solvents, and both aqueous and non-aqueous solutions
- Long service life with outstanding aging qualities
- High impact strength and is functional in a wide temperature range
- Hose easily springs back to its original form
- Excellent abrasion resistance

SPECIFICATIONS

Temperature range	-30°C to +60°C
Construction	Ether-based PUR reinforced with polyester fiber

Supplied in full coils only.

New

STRAIGHT BRAIDED WATER PUR HOSE

50 METRE COILS



285

PART NUMBER	mm	mm	bar	PRICE per coil
C199581240	8.0	12.0	10	£266.18
C199581640	11.0	16.0	10	£524.60

STRAIGHT BRAIDED ANTISTATIC EPDM RUBBER HOSE

FEATURES

- Dissipates electro-static discharge and minimises errant sparks
- Excellent weather resistance
- Extreme flexibility
- Electrically conductive

SPECIFICATIONS

Temperature range	-30°C to +60°C
Construction	Braided EPDM Rubber

Supplied in full coils only.

New

STRAIGHT BRAIDED ANTISTATIC EPDM RUBBER HOSE

40 METRE COILS

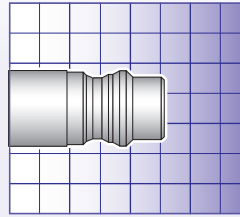


285

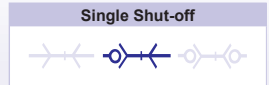
PART NUMBER	mm	mm	bar	PRICE per coil
C199009920	8.0	15.0	12	£261.21
C199009918	10.0	17.5	12	£299.99
C199009921	12.0	19.5	12	£373.90

FEATURES	BENEFITS
<ul style="list-style-type: none"> • One hand operation to connect • Two hand operation to disconnect • Extremely high airflow rate • Grip friendly locking sleeve 	<ul style="list-style-type: none"> • Prevents unintentional disconnection • Perfect for use in damp / wet and corrosive environments
SPECIFICATIONS	
Nominal flow diameter	7.4 mm (9/32")
Flow capacity	1950 l/min (68.8 CFM)*
Max. working pressure	35 bar (507 psi)
Min. burst pressure	140 bar (2030 psi)
Temperature range	-30°C to +100°C (-22°F to +212°F)
Coupling material	Nickel plated brass
Nipple material	Nickel plated brass

NPT Threads are available.



Not actual size.



*Flow capacity measured at 6 bar (87 psi) inlet pressure and pressure drop at 0.5 bar (7 psi).

COUPLINGS

CEJN SERIES 341 HOSE BARB



500

PART NUMBER	CONNECTION	PRICE
C103411004	10 mm 3/8"	£47.14

CEJN SERIES 341 MALE THREAD with Loctite Dry-Seal®



500

PART NUMBER	CONNECTION	PRICE
C103411152	1/4" BSPT	£47.14
C103411154	3/8" BSPT	£47.14
C103411155	1/2" BSPT	£47.14

CEJN SERIES 341 FEMALE THREAD



500

PART NUMBER	CONNECTION	PRICE
C103411202	1/4" BSPP	£38.98
C103411204	3/8" BSPP	£38.98

NIPPLES

CEJN SERIES 341 HOSE BARB



500

PART NUMBER	CONNECTION	PRICE
C103415002	6 mm 1/4"	£9.68
C103415004	10 mm 3/8"	£8.35

CEJN SERIES 341 MALE THREAD



500

PART NUMBER	CONNECTION	PRICE
C103415152	1/4" BSPT	£8.35
C103415154	3/8" BSPT	£15.47
C103415155	1/2" BSPT	£15.93

CEJN SERIES 341 FEMALE THREAD



500

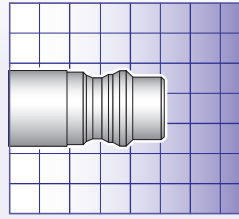
PART NUMBER	CONNECTION	PRICE
C103415202	1/4" BSPP	£8.35
C103415204	3/8" BSPP	£14.18
C103415205	1/2" BSPP	£15.93

For Breathing Air Hose, see page 498 and 501.

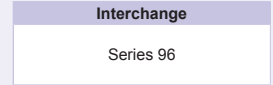


FEATURES	BENEFITS
<ul style="list-style-type: none"> • Locking sleeve made of hardened zinc plated steel • Automatic safety locking feature • One hand operation to connect • Two hand operation to disconnect • Pre applied sealant on male threads 	<ul style="list-style-type: none"> • Extremely durable • Prevents unintentional disconnection
SPECIFICATIONS	
Nominal flow diameter	7.4 mm (9/32")
Flow capacity	1950 l/min (68.8 CFM)*
Max. working pressure	35 bar (507 psi)
Min. burst pressure	140 bar (2030 psi)
Temperature range	-30°C to +100°C (-22°F to +212°F)
Coupling material	Zinc plated steel / brass
Nipple material	Hardened zinc plated steel
Connection force	103.0 N

NPT Threads are available.



Not actual size.



*Flow capacity measured at 6 bar (87 psi) inlet pressure and pressure drop at 0.5 bar (7 psi).

COUPLINGS

CEJN SERIES 342 HOSE BARB



PART NUMBER	CONNECTION	PRICE
C103421002	6 mm 1/4"	£32.76
C103421003	8 mm 5/16"	£32.76
C103421004	10 mm 3/8"	£32.76
C103421005	13 mm 1/2"	£33.69

NIPPLES

CEJN SERIES 342 HOSE BARB



PART NUMBER	CONNECTION	PRICE
C103425002	6 mm 1/4"	£17.60
C103425004	10 mm 3/8"	£4.70
C103425005	13 mm 1/2"	£6.64

CEJN SERIES 342 MALE THREAD with Loctite Dry-Seal®



PART NUMBER	CONNECTION	PRICE
C103421152	1/4" BSPT	£32.76
C103421154	3/8" BSPT	£33.38
C103421155	1/2" BSPT	£34.31

CEJN SERIES 342 MALE THREAD



PART NUMBER	CONNECTION	PRICE
C103425152	1/4" BSPT	£5.13
C103425154	3/8" BSPT	£7.03
C103425155	1/2" BSPT	£10.84

CEJN SERIES 342 FEMALE THREAD



PART NUMBER	CONNECTION	PRICE
C103421202	1/4" BSPP	£32.76
C103421204	3/8" BSPP	£34.00
C103421205	1/2" BSPP	£35.67

CEJN SERIES 342 FEMALE THREAD



PART NUMBER	CONNECTION	PRICE
C103425202	1/4" BSPP	£6.26
C103425204	3/8" BSPP	£8.35

For Breathing Air Hose, see page 498 and 501.

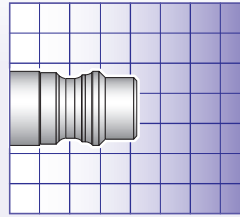
CEJN SERIES 342 STREAM-LINE CONNECTION



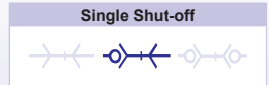
PART NUMBER	CONNECTION	PRICE
C103425060	6.5 x 10 mm	£19.66
C103425062	8 x 12 mm	£20.56

FEATURES	BENEFITS
<ul style="list-style-type: none"> • One hand operation to connect • Two hand operation to disconnect • Extremely high airflow rate • Shorter design – lower weight • Grip friendly locking sleeve • Pre applied sealant on male threads 	<ul style="list-style-type: none"> • Prevents unintentional disconnection • Suitable for breathing air firefighting applications and diving equipment
SPECIFICATIONS	
Nominal flow diameter	7.4 mm (9/32")
Flow capacity	1950 l/min (68.8 CFM)*
Max. working pressure	35 bar (507 psi)
Min. burst pressure	140 bar (2030 psi)
Temperature range	-30°C to +100°C (-22°F to +212°F)
Coupling material	Nickel plated brass
Nipple material	Nickel plated brass
Nipple material – C103445022	Stainless steel

NPT Threads are available.



Not actual size.



*Flow capacity measured at 6 bar (87 psi) inlet pressure and pressure drop at 0.5 bar (7 psi).

COUPLINGS



CEJN SERIES 344
HOSE BARB

500

PART NUMBER	CONNECTION	PRICE
C103441002	6 mm 1/4"	£35.25
C103441003	7 mm 5/16"	£41.38
C103441004	10 mm 3/8"	£38.00

NIPPLES



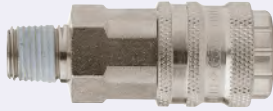
CEJN SERIES 344
HOSE BARB

500

PART NUMBER	CONNECTION	PRICE
C103445022	7 mm	£9.83
C103445023	7 mm	£7.66

C103445022: Material - Stainless Steel.

CEJN SERIES 344
MALE THREAD
with Loctite Dry-Seal®



500

PART NUMBER	CONNECTION	PRICE
C103441152	1/4" BSPT	£36.76
C103441154	3/8" BSPT	£41.89
C103441288	1/4" BSPP	£41.38

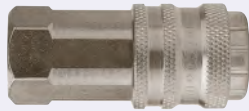
CEJN SERIES 344
MALE THREAD



500

PART NUMBER	CONNECTION	PRICE
C103445252	1/4" BSPP	£6.45

CEJN SERIES 344
FEMALE THREAD



500

PART NUMBER	CONNECTION	PRICE
C103441202	1/4" BSPP	£39.09
C103441204	3/8" BSPP	£43.17

CEJN SERIES 344
FEMALE THREAD



500

PART NUMBER	CONNECTION	PRICE
C103445202	1/4" BSPP	£17.56

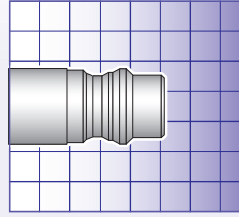
For Breathing
Air Hose,
see page 498
and 501.



BREATHING AIR – 345 SERIES



FEATURES	BENEFITS
<ul style="list-style-type: none"> • One hand operation to connect • Two hand operation to disconnect • Extremely high airflow rate • Grip friendly locking sleeve 	<ul style="list-style-type: none"> • Prevents unintentional disconnection • Suitable for applications that demand a closed system when disconnected
SPECIFICATIONS	
Nominal flow diameter	6.2 mm (1/4")
Flow capacity	1100 l/min (38.8 CFM)*
Max. working pressure	35 bar (507 psi)
Min. burst pressure	140 bar (2030 psi)
Temperature range	-30°C to +100°C (-22°F to +212°F)
Coupling material	Nickel plated brass
Nipple material	Nickel plated brass



Not actual size.

Double Shut-off



*Flow capacity measured at 6 bar (87 psi) inlet pressure and pressure drop at 0.5 bar (7 psi).

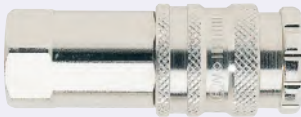
COUPLINGS



CEJN SERIES 345
HOSE BARB

500

PART NUMBER	CONNECTION	PRICE
C103451004	10 mm 3/8"	£46.63



CEJN SERIES 345
FEMALE THREAD

500

PART NUMBER	CONNECTION	PRICE
C103451202	1/4" BSPP	£44.96
C103451204	3/8" BSPP	£45.85

NIPPLES



CEJN SERIES 345
MALE THREAD

500

PART NUMBER	CONNECTION	PRICE
C103456252	1/4" BSPP	£44.14
C103456254	3/8" BSPP	£56.54



CEJN SERIES 345
FEMALE THREAD

500

PART NUMBER	CONNECTION	PRICE
C103456202	1/4" BSPP	£34.16

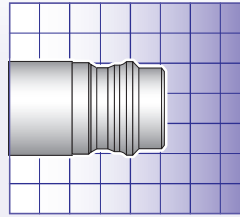
A selection of CEJN
product guides are
now available.

Please contact your
distributor for more
details.

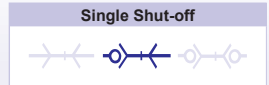
For Breathing
Air Hose,
see page 498
and 501.

FEATURES	BENEFITS
<ul style="list-style-type: none"> • Locking sleeve made of hardened zinc plated steel • Automatic safety locking feature • One hand operation to connect 	<ul style="list-style-type: none"> • Extremely durable • Prevents unintentional disconnection
SPECIFICATIONS	
Nominal flow diameter	10.4 mm (13/32")
Flow capacity	3950 l/min (139.4 CFM)*
Max. working pressure	35 bar (507 psi)
Min. burst pressure	140 bar (2030 psi)
Temperature range	-30°C to +100°C (-22°F to +212°F)
Coupling material	Zinc plated steel / brass
Nipple material	Hardened zinc plated steel

NPT Threads are available.



Not actual size.



*Flow capacity measured at 6 bar (87 psi) inlet pressure and pressure drop at 0.5 bar (7 psi).

COUPLINGS

CEJN SERIES 442 HOSE BARB



500

PART NUMBER	CONNECTION	PRICE
C104421004	10 mm 3/8"	£56.19
C104421005	13 mm 1/2"	£56.19
C104421006	16 mm 5/8"	£56.19
C104421007	19 mm 3/4"	£58.25

NIPPLES

CEJN SERIES 442 HOSE BARB



500

PART NUMBER	CONNECTION	PRICE
C104425005	13 mm 1/2"	£8.35
C104425006	16 mm 5/8"	£21.02
C104425007	19 mm 3/4"	£23.35

CEJN SERIES 442 MALE THREAD



500

PART NUMBER	CONNECTION	PRICE
C104421154	3/8" BSPT	£56.19
C104421155	1/2" BSPT	£56.19
C104421157	3/4" BSPT	£58.25

CEJN SERIES 442 MALE THREAD



500

PART NUMBER	CONNECTION	PRICE
C104425152	1/4" BSPT	£9.44
C104425154	3/8" BSPT	£8.35
C104425155	1/2" BSPT	£8.98
C104425157	3/4" BSPT	£14.69

CEJN SERIES 442 FEMALE THREAD



500

PART NUMBER	CONNECTION	PRICE
C104421204	3/8" BSPP	£56.19
C104421205	1/2" BSPP	£56.19
C104421207	3/4" BSPP	£58.25

CEJN SERIES 442 FEMALE THREAD



500

PART NUMBER	CONNECTION	PRICE
C104425204	3/8" BSPP	£12.05
C104425205	1/2" BSPP	£12.05



FEATURES	BENEFITS
• Steel, lightweight construction	• Simple one hand operation

SPECIFICATIONS	
Nominal flow diameter	5.0 mm (3/16")
Flow capacity	870 l/min (30.7 CFM)*
Max. working pressure	35 bar (508 psi)
Temperature range	-20°C to +100°C (-4°F to +212°F)

MATERIALS	
Coupling body	Nickel plated steel
Coupling back part	Nickel plated brass
Sleeve	Nickel plated steel
Valve	Brass
Springs, locking O-ring & balls	Stainless steel
Seals	Nitrile NBR
Nipple	Nickel plated steel

Interchange

Series 17

Single Shut-off



*Flow capacity measured at 6 bar (87 psi) inlet pressure and pressure drop at 0.5 bar (7 psi).

COUPLINGS

PARKAIR SERIES CP17
HOSE BARB

5611

PART NUMBER	CONNECTION	PRICE
CP17-1002	6 mm 1/4"	£13.16
CP17-1003	8 mm 5/16"	£13.16
CP17-1004	10 mm 3/8"	£13.16
CP17-1005	13 mm 1/2"	£13.16

NIPPLES

PARKAIR SERIES CP17
HOSE BARB

5611

PART NUMBER	CONNECTION	PRICE
CP17-5002	6 mm 1/4"	£2.86
CP17-5003	8 mm 5/16"	£2.86
CP17-5004	10 mm 3/8"	£2.86

PARKAIR SERIES CP17
MALE THREAD

5611

PART NUMBER	CONNECTION	PRICE
CP17-1152	1/4" BSPT	£13.16
CP17-1154	3/8" BSPT	£13.16
CP17-1155	1/2" BSPT	£13.16

PARKAIR SERIES CP17
MALE THREAD

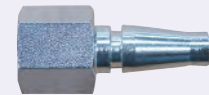
5611

PART NUMBER	CONNECTION	PRICE
CP17-5152	1/4" BSPT	£2.86
CP17-5154	3/8" BSPT	£2.86

PARKAIR SERIES CP17
FEMALE THREAD

5611

PART NUMBER	CONNECTION	PRICE
CP17-1202	1/4" BSPP	£13.16
CP17-1204	3/8" BSPP	£13.16
CP17-1205	1/2" BSPP	£13.16

PARKAIR SERIES CP17
FEMALE THREAD

5611

PART NUMBER	CONNECTION	PRICE
CP17-5202	1/4" BSPP	£2.86
CP17-5204	3/8" BSPP	£2.86
CP17-5205	1/2" BSPP	£2.86

PARKAIR SERIES CP17
TWIN COUPLING ASSEMBLY

5611

PART NUMBER	DESCRIPTION	PRICE
CP17-Y	Twin coupling assembly	£40.15

Clips & Clamps,
see
section 17.

FEATURES	BENEFITS
<ul style="list-style-type: none"> • Single action • Positive locking mechanism 	<ul style="list-style-type: none"> • Strong and durable • Robust and hardwearing
SPECIFICATIONS	
Nominal flow diameter	5.5 mm (7/32")
Flow capacity	600 l/min (21.2 CFM)*
Max. working pressure	35 bar (508 psi)
Temperature range	-20°C to +100°C (-4°F to +212°F)
MATERIALS	
Coupling body	Nickel plated steel
Coupling back part	Nickel plated brass
Sleeve	Nickel plated steel
Valve	Brass
Springs, locking O-ring & balls	Stainless steel
Seals	Nitrile NBR
Nipple	Nickel plated steel

Interchange
Vertex & Airflow Series 19

Single Shut-off

*Flow capacity measured at 6 bar (87 psi) inlet pressure and pressure drop at 0.5 bar (7 psi).

COUPLINGS

NIPPLES



PARKAIR SERIES CP19 HOSE BARB

5612

PART NUMBER	CONNECTION	PRICE
CP19-1002	6 mm 1/4"	£11.89
CP19-1003	8 mm 5/16"	£11.89
CP19-1004	10 mm 3/8"	£11.89
CP19-1005	13 mm 1/2"	£11.89



PARKAIR SERIES CP19 HOSE BARB

5612

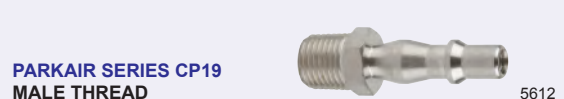
PART NUMBER	CONNECTION	PRICE
CP19-5002	6 mm 1/4"	£2.13
CP19-5003	8 mm 5/16"	£2.13
CP19-5004	10 mm 3/8"	£2.13
CP19-5005	13 mm 1/2"	£2.13



PARKAIR SERIES CP19 MALE THREAD

5612

PART NUMBER	CONNECTION	PRICE
CP19-1152	1/4" BSPT	£11.89
CP19-1154	3/8" BSPT	£11.89
CP19-1155	1/2" BSPT	£11.89



PARKAIR SERIES CP19 MALE THREAD

5612

PART NUMBER	CONNECTION	PRICE
CP19-5152	1/4" BSPT	£2.13
CP19-5154	3/8" BSPT	£2.13
CP19-5155	1/2" BSPT	£2.13



PARKAIR SERIES CP19 FEMALE THREAD

5612

PART NUMBER	CONNECTION	PRICE
CP19-1202	1/4" BSPP	£11.89
CP19-1204	3/8" BSPP	£11.89
CP19-1205	1/2" BSPP	£11.89



PARKAIR SERIES CP19 FEMALE THREAD

5612

PART NUMBER	CONNECTION	PRICE
CP19-5202	1/4" BSPP	£2.13
CP19-5204	3/8" BSPP	£2.13
CP19-5205	1/2" BSPP	£2.13



PARKAIR SERIES CP19 TWIN COUPLING ASSEMBLY

5612

PART NUMBER	DESCRIPTION	PRICE
CP19-Y	Twin Coupling Assembly	£36.69

Whipcheck Hose, see page 222.

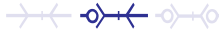


FEATURES	BENEFITS
<ul style="list-style-type: none"> • Compact • Lightweight 	<ul style="list-style-type: none"> • Space saving • Easy to handle

Interchange

Series 21, Series 90

Single Shut-off



SPECIFICATIONS	
Nominal flow diameter	5.0 mm (3/16")
Flow capacity	560 l/min
Max. working pressure	35 bar (508 psi)
Temperature range	-20°C to +100°C (-4°F to +212°F)
Coupling body material	Nickel plated brass
Nipple material	Nickel plated brass
Locking O-ring	Stainless steel
Valves	Nickel plated brass
Seal	NBR

COUPLINGS

PARKAIR SERIES 21
HOSE BARB

PART NUMBER	CONNECTION	PRICE
CP21-HG04N	4 mm	£10.92
CP21-1002	6 mm	£10.92
CP21-1003	8 mm	£10.92
CP21-HG09N	9 mm	£10.92
CP21-1004	10 mm	£10.92

PARKAIR SERIES 21
MALE THREAD

Not supplied with O-ring



PART NUMBER	CONNECTION	PRICE
CP21-1151	1/8" BSPP	£10.92
CP21-1152	1/4" BSPP	£10.92
CP21-1154	3/8" BSPP	£10.92

PARKAIR SERIES 21
FEMALE THREAD

PART NUMBER	CONNECTION	PRICE
CP21-1201	1/8" BSPP	£10.92
CP21-1202	1/4" BSPP	£10.92
CP21-1204	3/8" BSPP	£10.92

PARKAIR SERIES 21
PUSH-IN TUBE FITTINGS

PART NUMBER	CONNECTION	PRICE
CP21-PG04N	6 x 4 mm	£12.75
CP21-PG06N	8 x 6 mm	£12.75

PARKAIR SERIES 21
PANEL MOUNT
PUSH-IN FITTINGS

PART NUMBER	CONNECTION	PRICE
CP21-SG04N	6 x 4 mm	£12.75
CP21-SG06N	8 x 6 mm	£12.75

PARKAIR SERIES 21
PANEL MOUNT HOSE BARB

PART NUMBER	CONNECTION	PRICE
CP21-MG04N	4 mm	£12.75
CP21-MG06N	6 mm	£12.75
CP21-MG08N	8 mm	£12.75

PARKAIR
SERIES 21
ANTI-KINK TUBE NUT

PART NUMBER	CONNECTION	PRICE
CP21-YP04N	6 x 4 mm	£12.75
CP21-YP06N	8 x 6 mm	£12.75

NIPPLES

PARKAIR SERIES 21
HOSE BARB

PART NUMBER	CONNECTION	PRICE
CP21-HU04N	4 mm	£1.94
CP21-5001	5 mm	£1.94
CP21-5002	6 mm	£1.94
CP21-5003	8 mm	£1.94
CP21-HU09N	9 mm	£1.94
CP21-5004	10 mm	£1.94

PARKAIR SERIES 21
MALE THREAD

Not supplied with O-ring



PART NUMBER	CONNECTION	PRICE
CP21-5151	1/8" BSPP	£1.94
CP21-5152	1/4" BSPP	£1.94
CP21-5154	3/8" BSPP	£1.94

PARKAIR SERIES 21
FEMALE THREAD

PART NUMBER	CONNECTION	PRICE
CP21-5201	1/8" BSPP	£1.94
CP21-5202	1/4" BSPP	£1.94
CP21-5204	3/8" BSPP	£1.94

PARKAIR SERIES 21
PUSH-IN TUBE FITTINGS

PART NUMBER	CONNECTION	PRICE
CP21-PU04N	6 x 4 mm	£2.61
CP21-PU06N	8 x 6 mm	£2.61

PARKAIR SERIES 21
PANEL MOUNT
PUSH-IN FITTINGS

PART NUMBER	CONNECTION	PRICE
CP21-SU04N	6 x 4 mm	£4.56
CP21-SU06N	8 x 6 mm	£4.56

PARKAIR SERIES 21
PANEL MOUNT HOSE BARB

PART NUMBER	CONNECTION	PRICE
CP21-MU04N	4 mm	£4.56
CP21-MU05N	5 mm	£4.56
CP21-MU06N	6 mm	£4.56
CP21-MU08N	8 mm	£4.56

PARKAIR
SERIES 21
ANTI-KINK TUBE NUT

PART NUMBER	CONNECTION	PRICE
CP21-YU04N	6 x 4 mm	£4.56
CP21-YU06N	8 x 6 mm	£4.56

PNEUMATIC – CP21 SERIES – COLOUR CODED

SPECIFICATIONS

Max. working pressure	30 bar (435 psi)
Temperature range	-20°C to +100°C (-4°F to +212°F)
Coupling body and nipple material	Nickel plated brass
Locking O-ring	Stainless steel
Valves	Brass
Seal	NBR

COUPLINGS

**PARKAIR – CP21 SERIES
MALE THREAD**



5614

PART NUMBER	CONNECTION	COLOUR CODING	PRICE
CP21-EG010N	1/8" BSPP	Green	£31.84
CP21-EG810N	1/8" BSPP	Red	£31.84

**PARKAIR - CP21 SERIES
FEMALE THREAD**



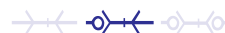
5614

PART NUMBER	CONNECTION	COLOUR CODING	PRICE
CP21-DG013N	1/4" BSPP	Green	£31.84
CP21-DG313N	1/4" BSPP	Brown	£31.84
CP21-DG613N	1/4" BSPP	Blue	£31.84
CP21-DG813N	1/4" BSPP	Red	£31.84

Interchange

Other colour coded 21 series

Single Shut-off



NIPPLES

**PARKAIR – CP21 SERIES
MALE THREAD**



5614

PART NUMBER	CONNECTION	COLOUR CODING	PRICE
CP21-EU010N	1/8" BSPP	Green	£13.95
CP21-EU810N	1/8" BSPP	Red	£13.95
CP21-EU013N	1/4" BSPP	Green	£13.95
CP21-EU313N	1/4" BSPP	Brown	£13.95
CP21-EU613N	1/4" BSPP	Blue	£13.95

PNEUMATIC – CP21 SERIES – BRASS

SPECIFICATIONS

Nominal flow diameter	5.0 mm (3/16")
Flow capacity	550 l/min (19.4 CFM)
Max. working pressure	35 bar (510 psi)
Temperature range	-20°C to +100°C (-4°F to +212°F)
Coupling, nipple and valve material	Brass
Seal	Nitrile

FEATURES

- Compact
- Lightweight

BENEFITS

- Space saving
- Easy to handle

Interchange

Several German Brands
Series 21

Single Shut-off



COUPLINGS

**PARKAIR SERIES
HOSE BARB**



5614

PART NUMBER	CONNECTION	PRICE
FSK600	6 mm	£10.32
FSK900	9 mm	£10.32

NIPPLES

**PARKAIR SERIES
HOSE BARB**



5614

PART NUMBER	CONNECTION	PRICE
FS600	6 mm	£1.94
FS900	9 mm	£1.94

**PARKAIR SERIES
MALE THREAD**



5614

PART NUMBER	CONNECTION	PRICE
FSKA500	1/8" BSPP	£10.32
FSKA510	1/4" BSPP	£10.32

**PARKAIR SERIES
MALE THREAD**



5614

PART NUMBER	CONNECTION	PRICE
FSA500	1/8" BSPP	£1.94
FSA510	1/4" BSPP	£1.94

**PARKAIR SERIES
FEMALE THREAD**



5614

PART NUMBER	CONNECTION	PRICE
FSKI500	1/8" BSPP	£10.32
FSKI510	1/4" BSPP	£10.32

**PARKAIR SERIES
FEMALE THREAD**



5614

PART NUMBER	CONNECTION	PRICE
FSI500	1/8" BSPP	£1.94
FSI510	1/4" BSPP	£1.94

**PARKAIR SERIES
PUSH-IN TUBE FITTINGS**



5614

PART NUMBER	CONNECTION	PRICE
FSK6X4	6 x 4 mm	£12.13
FSK8X6	8 x 6 mm	£12.13

**PARKAIR SERIES
PUSH-IN TUBE FITTINGS**



5614

PART NUMBER	CONNECTION	PRICE
FS6X4	6 x 4 mm	£2.61
FS8X6	8 x 6 mm	£2.61



SPECIFICATIONS

Nominal flow diameter	6.0 mm (1/4")
Flow capacity	1300 l/min (45.9 CFM)*
Max. working pressure	35 bar (508 psi)
Temperature range	-20°C to +100°C (-4°F to +212°F)

MATERIALS

Coupling body	Nickel plated brass
Sleeve	Nickel plated steel
Valve	Die cast zinc
Springs, locking O-ring & balls	Stainless steel
Seals	Nitrile NBR
Nipple	Nickel plated steel

Interchange

Series QIC 10
Series 33

Single Shut-off



*Flow capacity measured at 6 bar (87 psi) inlet pressure and pressure drop at 0.5 bar (7 psi).

COUPLINGS

PARKAIR SERIES CP33
HOSE BARB

5613

PART NUMBER	CONNECTION	PRICE
CP33-1002	6 mm 1/4"	£19.11
CP33-1003	8 mm 5/16"	£19.11
CP33-1004	10 mm 3/8"	£19.11
CP33-1005	13 mm 1/2"	£19.11

NIPPLES

PARKAIR SERIES CP33
HOSE BARB

5613

PART NUMBER	CONNECTION	PRICE
CP33-5002	6 mm 1/4"	£5.47
CP33-5003	8 mm 5/16"	£5.47
CP33-5004	10 mm 3/8"	£5.47
CP33-5005	13 mm 1/2"	£5.47

PARKAIR SERIES CP33
MALE THREAD

5613

PART NUMBER	CONNECTION	PRICE
CP33-1152	1/4" BSPT	£19.11
CP33-1154	3/8" BSPT	£19.11
CP33-1155	1/2" BSPT	£19.11

PARKAIR SERIES CP33
MALE THREAD

5613

PART NUMBER	CONNECTION	PRICE
CP33-5152	1/4" BSPT	£5.47
CP33-5154	3/8" BSPT	£5.47
CP33-5155	1/2" BSPT	£5.47

PARKAIR SERIES CP33
FEMALE THREAD

5613

PART NUMBER	CONNECTION	PRICE
CP33-1202	1/4" BSPP	£19.11
CP33-1204	3/8" BSPP	£19.11
CP33-1205	1/2" BSPP	£19.11

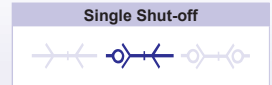
PARKAIR SERIES CP33
FEMALE THREAD

5613

PART NUMBER	CONNECTION	PRICE
CP33-5202	1/4" BSPP	£5.47
CP33-5204	3/8" BSPP	£5.47
CP33-5205	1/2" BSPP	£5.47

SPECIFICATIONS	
Nominal flow diameter	10.0 mm (3/8")
Flow capacity	2500 l/min (88.3 CFM)*
Max. working pressure	35 bar (508 psi)
Temperature range	-20°C to +100°C (-4°F to +212°F)
MATERIALS	
Coupling body & sleeve	Nickel plated steel
Coupling back part	Nickel plated brass
Valve	Brass
Springs, locking O-ring & balls	Stainless steel
Seals	Nitrile NBR
Nipple	Nickel plated steel

Interchange
Series QIC 15 Series 34



*Flow capacity measured at 6 bar (87 psi) inlet pressure and pressure drop at 0.5 bar (7 psi).

COUPLINGS

NIPPLES

PARKAIR SERIES CP34 HOSE BARB



5613

PART NUMBER	CONNECTION	PRICE
CP34-1004	10 mm 3/8"	£32.15
CP34-1005	13 mm 1/2"	£32.15
CP34-1007	19 mm 3/4"	£32.15

PARKAIR SERIES CP34 HOSE BARB



5613

PART NUMBER	CONNECTION	PRICE
CP34-5002	6 mm 1/4"	£6.37
CP34-5004	10 mm 3/8"	£6.37
CP34-5005	13 mm 1/2"	£6.37

PARKAIR SERIES CP34 MALE THREAD



5613

PART NUMBER	CONNECTION	PRICE
CP34-1154	3/8" BSPT	£32.15
CP34-1155	1/2" BSPT	£32.15
CP34-1156	3/4" BSPT	£32.15

PARKAIR SERIES CP34 MALE THREAD



5613

PART NUMBER	CONNECTION	PRICE
CP34-5154	3/8" BSPT	£6.37
CP34-5155	1/2" BSPT	£6.37

PARKAIR SERIES CP34 FEMALE THREAD



5613

PART NUMBER	CONNECTION	PRICE
CP34-1204	3/8" BSPP	£32.15
CP34-1205	1/2" BSPP	£32.15
CP34-1206	3/4" BSPP	£32.15

PARKAIR SERIES CP34 FEMALE THREAD



5613

PART NUMBER	CONNECTION	PRICE
CP34-5204	3/8" BSPP	£6.37
CP34-5205	1/2" BSPP	£6.37



FEATURES	BENEFITS
<ul style="list-style-type: none"> • Twist locking feature • Corrosion resistant finish 	<ul style="list-style-type: none"> • Prevents accidental disconnection • Prevents hose kinking – through swivel action
SPECIFICATIONS	
Nominal bore	5.0 mm (3/16")
Max. flow rate @ 6 bar	500 l/min @ 0.5 p.d.
Max. working pressure	17 bar (250 psi)
Temperature range	-20°C to +80°C (14°F to +176°F)

Single Shut-off



*Flow capacity measured at 6 bar (87 psi) inlet pressure and pressure drop at 0.5 bar (7 psi).

COUPLINGS – STANDARD DUTY

SCHRADER TWISTLOCK
MALE THREAD

8210

PART NUMBER	CONNECTION	PRICE
SC9793D-12	1/4" BSPT	£30.88
SC9792D-12	3/8" BSPT	£30.88

SCHRADER TWISTLOCK
FEMALE THREAD

8210

PART NUMBER	CONNECTION	PRICE
SC8952DL-12	1/4" BSPP	£30.88

NIPPLES – STANDARD DUTY

SCHRADER TWISTLOCK
HOSE BARB

8210

PART NUMBER	CONNECTION	PRICE
SC8787-11	6 mm 1/4"	£4.78
SC9750-11	8 mm 5/16"	£4.78
SC8788-11	10 mm 3/8"	£4.78

SCHRADER TWISTLOCK
MALE THREAD

8210

PART NUMBER	CONNECTION	PRICE
SC8050B-11	1/4" BSPT	£4.78

SCHRADER TWISTLOCK
FEMALE THREAD

8210

PART NUMBER	CONNECTION	PRICE
SC8278L-11	1/4" BSPP	£4.78

COUPLINGS – HEAVY DUTY

SPECIFICATIONS

Nominal bore	8.5 mm (5/16")
Max. flow rate	2,800 l/min (100 CFM)*

SCHRADER TWISTLOCK
FEMALE THREAD

8210

PART NUMBER	CONNECTION	PRICE
SC1054EL-14	1/4" BSPP	£75.82
SC1095EL-38	3/8" BSPP	£55.15
SC1461EL-12	1/2" BSPP	£55.15

NIPPLES – HEAVY DUTY

SCHRADER TWISTLOCK
HOSE BARB

8210

PART NUMBER	CONNECTION	PRICE
SC1097-11	10 mm 3/8"	£9.96
SC1098-11	13 mm 1/2"	£9.96

SCHRADER TWISTLOCK
MALE THREAD

8210

PART NUMBER	CONNECTION	PRICE
SC8624B-11	1/4" BSPT	£9.96
SC9739-11	3/8" BSPT	£9.96
SC8807-11	1/2" BSPT	£9.96

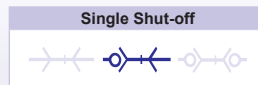
SCHRADER TWISTLOCK
FEMALE THREAD

8210

PART NUMBER	CONNECTION	PRICE
SC1261EL-12	1/4" BSPT	£9.96
SC1096B-11	3/8" BSPT	£9.96

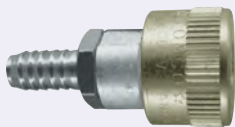
FEATURES	BENEFITS
<ul style="list-style-type: none"> • Push to connect and lock • Twist sleeve 1/8 turn to unlock and release 	<ul style="list-style-type: none"> • Protects against accidental uncoupling
SPECIFICATIONS	
Flow capacity	850 l/min (30.0 CFM)*
Max. working pressure	17 bar (250 psi)
Min. burst pressure	140 bar (2030 psi)
Temperature range	-40°C to +107°C (-40°F to +225°F)
Locking device	Spring plates
Coupling material	Steel / aluminium
Nipple material	Hardened steel
Valve	Steel
Seal	Nitrile

Interchange
Series 17



*Flow capacity measured at 6 bar (87 psi) inlet pressure and pressure drop at 0.5 bar (7 psi).

COUPLINGS



PARKAIR SERIES 399 HOSE BARB

5620

PART NUMBER	CONNECTION	PRICE
C103991002	6 mm 1/4"	£15.31
C103991004	10 mm 3/8"	£15.31



PARKAIR SERIES 399 MALE THREAD

5620

PART NUMBER	CONNECTION	PRICE
C103991152	1/4" BSPT	£15.31
C103991154	3/8" BSPT	£15.31



PARKAIR SERIES 399 FEMALE THREAD

5620

PART NUMBER	CONNECTION	PRICE
C103991202	1/4" BSPP	£15.31

NIPPLES



PARKAIR SERIES 399 HOSE BARB

5620

PART NUMBER	CONNECTION	PRICE
C103995002	6 mm 1/4"	£3.18
C103995003	8 mm 5/16"	£3.18
C103995004	10 mm 3/8"	£3.18
C103995005	13 mm 1/2"	£4.85



PARKAIR SERIES 399 MALE THREAD

5620

PART NUMBER	CONNECTION	PRICE
C103995151	1/8" BSPT	£3.18
C103995152	1/4" BSPT	£3.18
C103995154	3/8" BSPT	£3.18
C103995155	1/2" BSPT	£4.85



PARKAIR SERIES 399 FEMALE THREAD

5620

PART NUMBER	CONNECTION	PRICE
C103995201	1/8" BSPP	£3.18
C103995202	1/4" BSPP	£3.18
C103995204	3/8" BSPP	£3.18

WHIP HOSE ASSEMBLIES



PARKAIR SERIES 399 NIPPLE TO BSPT MALE
0.5 metre length

1350

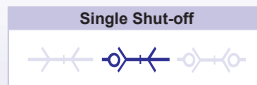
PART NUMBER	mm	ins	BSPT	bar	PRICE per assy.
H-GP08L399	8.0	5/16	1/4	20	£18.59
H-GP10L399	10.0	3/8	3/8	20	£19.89

For Rubber Alloy Hose, see page 503.



FEATURES	BENEFITS
<ul style="list-style-type: none"> • Push-to-connect and lock • Twist sleeve 1/8 turn to unlock and release 	<ul style="list-style-type: none"> • Protects against accidental uncoupling
SPECIFICATIONS	
Flow capacity	2835 l/min (100.0 CFM)*
Max. working pressure	20 bar (300 psi)
Temperature range	-12°C to +74°C (+10°F to +165°F)
Coupling material	Brass / aluminium
Nipple material	Hardened steel
Release sleeve	Zinc and yellow passivated steel
Valve	Steel
Seal	Nitrile

Interchange
Series 68



*Flow capacity measured at 6 bar (87 psi) inlet pressure and pressure drop at 0.5 bar (7 psi).

COUPLINGS

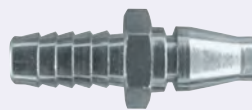


5620

PARKAIR SERIES 499 FEMALE THREAD

PART NUMBER	CONNECTION	PRICE
C104991205	1/2" BSPP	£33.03

NIPPLES



5620

PARKAIR SERIES 499 HOSE BARB

PART NUMBER	CONNECTION	PRICE
C104995004	10 mm 3/8"	£4.50
C104995005	13 mm 1/2"	£4.50



5620

PARKAIR SERIES 499 MALE THREAD

PART NUMBER	CONNECTION	PRICE
C104995152	1/4" BSPT	£4.50
C104995154	3/8" BSPT	£4.50
C104995155	1/2" BSPT	£4.50
C104995157	3/4" BSPT	£4.85



5620

PARKAIR SERIES 499 FEMALE THREAD

PART NUMBER	CONNECTION	PRICE
C104995202	1/4" BSPP	£4.50
C104995204	3/8" BSPP	£4.50
C104995205	1/2" BSPP	£4.50

For Tubing, Hose & Ducting, see section 10.

- PVC tubing and hose
- Nylon tubing & hose
- Polyurethane tube and recoils



FEATURES	BENEFITS
<ul style="list-style-type: none"> • Single action • Positive locking mechanism 	<ul style="list-style-type: none"> • Strong and durable • Robust and hardwearing
SPECIFICATIONS	
Nominal flow diameter	4.8 mm (3/16")
Flow capacity	1210 l/min (43.0 CFM)*
Max. working pressure	14 bar (200 psi)
Temperature range	-40°C to +100°C (-40°F to +212°F)
Coupling material	Zinc plated steel

Interchange
Series 19

Single Shut-off

*Flow capacity measured at 6 bar (87 psi) inlet pressure and pressure drop at 0.5 bar (7 psi).

COUPLINGS

NIPPLES

PCL AIRFLOW SERIES HOSE BARB



PART NUMBER	CONNECTION	PRICE
CAC2R02	6 mm 1/4"	£10.83
CAC2S02	8 mm 5/16"	£10.83
CAC2T02	10 mm 3/8"	£10.83

PCL STANDARD ADAPTOR HOSE BARB



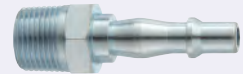
PART NUMBER	CONNECTION	PRICE
C102955001	5 mm 3/16"	£1.92
C102955002	6 mm 1/4"	£1.92
C102955003	8 mm 5/16"	£1.92
C102955004	10 mm 3/8"	£1.92
C102955005	13 mm 1/2"	£3.73

PCL AIRFLOW SERIES MALE THREAD



PART NUMBER	CONNECTION	PRICE
CAC2CM02	1/4" BSPT	£9.11
CAC2EM02	3/8" BSPT	£10.83
CAC2JM02	1/2" BSPT	£10.83

PCL STANDARD ADAPTOR MALE THREAD



PART NUMBER	CONNECTION	PRICE
C102955152	1/4" BSPT	£1.92
C102955154	3/8" BSPT	£1.92
C102955155	1/2" BSPT	£3.73

PCL AIRFLOW SERIES FEMALE THREAD



PART NUMBER	CONNECTION	PRICE
CAC2CF02	1/4" BSPP	£9.11
CAC2EF02	3/8" BSPP	£10.83
CAC2JF02	1/2" BSPP	£10.83

PCL STANDARD ADAPTOR FEMALE THREAD



PART NUMBER	CONNECTION	PRICE
C102955202	1/4" BSPP	£1.92
C102955204	3/8" BSPP	£3.73
C102955205	1/2" BSPP	£4.61

PCL AIRFLOW SERIES TWIN COUPLING



PART NUMBER	DESCRIPTION	PRICE
CAC6103	Twin coupling	£32.82

For Braided PVC Hose, see pages 494 - 495.



FEATURES	BENEFITS
<ul style="list-style-type: none"> • Double action • Positive locking mechanism • Protective shoulder 	<ul style="list-style-type: none"> • Strong and durable • Robust and hardwearing • Minimises accidental disconnection
SPECIFICATIONS	
Nominal flow diameter	4.8 mm (3/16")
Flow capacity	1210 l/min (43.0 CFM)*
Max. working pressure	14 bar (200 psi)
Temperature range	-40°C to +100°C (-40°F to +212°F)
Coupling material	Zinc plated steel

Interchange
Series 19

Single Shut-off

*Flow capacity measured at 6 bar (87 psi) inlet pressure and pressure drop at 0.5 bar (7 psi).

COUPLINGS

NIPPLES

PCL VERTEX SERIES HOSE BARB



8220

PART NUMBER	CONNECTION	PRICE
CAC9R02	6 mm 1/4"	£10.83
CAC9S02	8 mm 5/16"	£10.83
CAC9T02	10 mm 3/8"	£10.83

PCL STANDARD ADAPTOR HOSE BARB



215

PART NUMBER	CONNECTION	PRICE
C102955001	5 mm 3/16"	£1.92
C102955002	6 mm 1/4"	£1.92
C102955003	8 mm 5/16"	£1.92
C102955004	10 mm 3/8"	£1.92
C102955005	13 mm 1/2"	£3.73

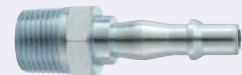
PCL VERTEX SERIES MALE THREAD



8220

PART NUMBER	CONNECTION	PRICE
CAC9CM02	1/4" BSPT	£9.11
CAC9EM02	3/8" BSPT	£10.83
CAC9JM02	1/2" BSPT	£10.83

PCL STANDARD ADAPTOR MALE THREAD



215

PART NUMBER	CONNECTION	PRICE
C102955152	1/4" BSPT	£1.92
C102955154	3/8" BSPT	£1.92
C102955155	1/2" BSPT	£3.73

PCL VERTEX SERIES FEMALE THREAD



8220

PART NUMBER	CONNECTION	PRICE
CAC9CF02	1/4" BSPP	£9.11
CAC9EF02	3/8" BSPP	£10.83
CAC9JF02	1/2" BSPP	£10.83

PCL STANDARD ADAPTOR FEMALE THREAD



215

PART NUMBER	CONNECTION	PRICE
C102955202	1/4" BSPP	£1.92
C102955204	3/8" BSPP	£3.73
C102955205	1/2" BSPP	£4.61

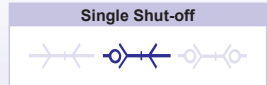
PCL VERTEX SERIES TWIN COUPLING



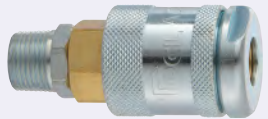
8220

PART NUMBER	DESCRIPTION	PRICE
CAC65302	Twin coupling	£32.82

FEATURES	BENEFITS	
<ul style="list-style-type: none"> • Special valve design and large aperture for optimum air flow • Secure locking device • Swivel action 	<ul style="list-style-type: none"> • Efficient • Prevents accidental disconnection • Prevents hose kinking – through swivel action • Hardened steel shoulder 	
SPECIFICATIONS	60 Series	100 Series
Nominal bore	7.1 mm (9/32")	10.3 mm (13/32")
Max. flow rate @ 100 PSI	1700 l/min (60 CFM)	3313 l/min (117 CFM)
Max. working pressure	14 bar (200 psi)	
Temperature range	-40°C to +100°C (-40°F to +212°F)	
Coupling material	Zinc and yellow passivated steel	
Nipple material	Zinc and yellow passivated steel	
Valve material	Brass	Stainless steel
Seals	Nitrile	



60 SERIES COUPLINGS



PCL SERIES 60 MALE THREAD

8200

PART NUMBER	CONNECTION	PRICE
CAC4CM02	1/4" BSPT	£26.26
CAC4EM02	3/8" BSPT	£26.26
CAC4JM02	1/2" BSPT	£26.26



PCL SERIES 60 FEMALE THREAD

8200

PART NUMBER	CONNECTION	PRICE
CAC4CF02	1/4" BSPP	£26.26
CAC4EF02	3/8" BSPP	£26.26
CAC4JF02	1/2" BSPP	£26.26

60 SERIES NIPPLES



PCL SERIES 60 HOSE BARB

8200

PART NUMBER	CONNECTION	PRICE
CACA2654	8 mm 5/16"	£5.43
CACA2658	10 mm 3/8"	£5.43
CACA2659	13 mm 1/2"	£5.43



PCL SERIES 60 MALE THREAD

8200

PART NUMBER	CONNECTION	PRICE
CACA2657	1/4" BSPT	£5.43
CACA2661	3/8" BSPT	£5.43

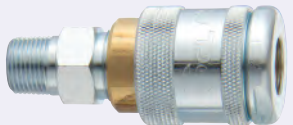


PCL SERIES 60 FEMALE THREAD

8200

PART NUMBER	CONNECTION	PRICE
CACA2653	1/4" BSPP	£5.43
CACA2660	3/8" BSPP	£5.43

100 SERIES COUPLINGS



PCL SERIES 100 MALE THREAD

8200

PART NUMBER	CONNECTION	PRICE
CAC5EM	3/8" BSPT	£33.02
CAC5JM	1/2" BSPT	£33.02



PCL SERIES 100 FEMALE THREAD

8200

PART NUMBER	CONNECTION	PRICE
CAC5EF	3/8" BSPP	£33.02
CAC5JF	1/2" BSPP	£33.02

100 SERIES NIPPLES



PCL SERIES 100 HOSE BARB

8200

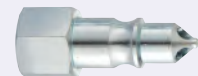
PART NUMBER	CONNECTION	PRICE
CACA3037	10 mm 3/8"	£5.43
CACA3036	13 mm 1/2"	£5.43



PCL SERIES 100 MALE THREAD

8200

PART NUMBER	CONNECTION	PRICE
CACA2999	3/8" BSPT	£5.43
CACA3035	1/2" BSPT	£5.43



PCL SERIES 100 FEMALE THREAD

8200

PART NUMBER	CONNECTION	PRICE
CACA2994	3/8" BSPP	£5.43



FEATURES	BENEFITS
<ul style="list-style-type: none"> Two stage, self-venting release Compatible with genuine PCL standard adaptors Hard wearing steel construction with corrosion resistant finish Affordable safety solution 	<ul style="list-style-type: none"> Safe and simple to use Prevents hose whip Creates a safe compressed air environment Conforms to ISO4414:1998 and EN 983:1996
SPECIFICATIONS	
Nominal flow diameter	4.8 mm (3/16")
Flow capacity	1210 l/min (43.0 CFM)*
Max. working pressure	14 bar (200 psi)
Temperature range	-40°C to +100°C (-40°F to +212°F)
Coupling material	Steel

Interchange

PCL Standard Adaptor,
Airflow, Vertex, Series 19

Single Shut-off



*Flow capacity measured at 6 bar (87 psi) inlet pressure and pressure drop at 0.5 bar (7 psi).

COUPLINGS



8200

SAFEFLOW SAFETY SERIES
HOSE BARB

PART NUMBER	CONNECTION	PRICE
CSC21R	6 mm 1/4"	£17.36
CSC21S	8 mm 5/16"	£17.36
CSC21T	10 mm 3/8"	£17.36



8200

SAFEFLOW SAFETY SERIES
MALE THREAD

PART NUMBER	CONNECTION	PRICE
CSC21CM	1/4" BSPT	£14.65
CSC21EM	3/8" BSPT	£17.36
CSC21JM	1/2" BSPT	£17.36



8200

SAFEFLOW SAFETY SERIES
FEMALE THREAD

PART NUMBER	CONNECTION	PRICE
CSC21CF	1/4" BSPT	£14.65
CSC21EF	3/8" BSPT	£17.36
CSC21JF	1/2" BSPT	£17.36

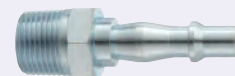
NIPPLES



215

PCL STANDARD ADAPTOR
HOSE BARB

PART NUMBER	CONNECTION	PRICE
C102955001	5 mm 3/16"	£1.92
C102955002	6 mm 1/4"	£1.92
C102955003	8 mm 5/16"	£1.92
C102955004	10 mm 3/8"	£1.92
C102955005	13 mm 1/2"	£3.73



215

PCL STANDARD ADAPTOR
MALE THREAD

PART NUMBER	CONNECTION	PRICE
C102955152	1/4" BSPT	£1.92
C102955154	3/8" BSPT	£1.92
C102955155	1/2" BSPT	£3.73



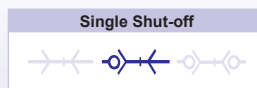
215

PCL STANDARD ADAPTOR
FEMALE THREAD

PART NUMBER	CONNECTION	PRICE
C102955202	1/4" BSPP	£1.92
C102955204	3/8" BSPP	£3.73
C102955205	1/2" BSPP	£4.61

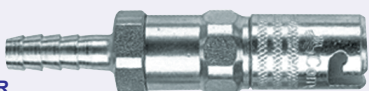
FEATURES	BENEFITS
• Compact and lightweight	• Prevent accidental disconnection

SPECIFICATIONS	
Nominal flow diameter	5.6 mm (7/32")
Max. flow rate @ 100 psi	1530 l/min (54.0 CFM)*
Max. working pressure	17 bar (250 psi)
Temperature range	-20°C to +80°C (-4°F to +176°F)
Coupling material	Zinc plated steel



*Flow capacity measured at 6 bar (87 psi) inlet pressure and pressure drop at 0.5 bar (7 psi).

SOCKET HALVES



PCL INSTANT-AIR HOSE BARB

920

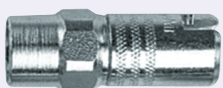
PART NUMBER	CONNECTION	PRICE
FPT8800SU4	6 mm 1/4"	£10.90
FPT8800SU5	8 mm 5/16"	£11.73
FPT8800SU6	10 mm 3/8"	£11.73



PCL INSTANT-AIR MALE THREAD

920

PART NUMBER	CONNECTION	PRICE
FPT8825	1/4" BSPP	£10.90
FPT8827	3/8" BSPP	£10.90
FPT9095	1/2" BSPT	£15.29



PCL INSTANT-AIR FEMALE THREAD

920

PART NUMBER	CONNECTION	PRICE
FPT8823	1/4" BSP	£10.90
FPT8800	3/8" BSP	£10.90
FPT9096	1/2" BSP	£15.29

PLUG HALVES – NON SWIVEL



PCL INSTANT-AIR HOSE BARB

920

PART NUMBER	CONNECTION	PRICE
FPT8802SU4	6 mm 1/4"	£7.37
FPT8802SU5	8 mm 5/16"	£7.37
FPT8802SU6	10 mm 3/8"	£7.37



PCL INSTANT-AIR MALE THREAD

920

PART NUMBER	CONNECTION	PRICE
FPT8808	1/4" BSPP	£7.37
FPT8817	3/8" BSPP	£7.37



PCL INSTANT-AIR FEMALE THREAD

920

PART NUMBER	CONNECTION	PRICE
FPT8806	1/4" BSPP	£7.37
FPT8802	3/8" BSPP	£7.37

PLUG HALVES – SWIVEL



PCL INSTANT-AIR HOSE BARB

920

PART NUMBER	CONNECTION	PRICE
FPT8804SU4	6 mm 1/4"	£11.14
FPT8804SU5	8 mm 5/16"	£11.14
FPT8804SU6	10 mm 3/8"	£11.14



PCL INSTANT-AIR MALE THREAD

920

PART NUMBER	CONNECTION	PRICE
FPT8836	1/4" BSPP	£11.14
FPT8838	3/8" BSPP	£11.14



PCL INSTANT-AIR FEMALE THREAD

920

PART NUMBER	CONNECTION	PRICE
FPT8834	1/4" BSPP	£11.14
FPT8804	3/8" BSPP	£11.14





FEATURES	BENEFITS
• Compact and lightweight	• Prevent accidental disconnection
SPECIFICATIONS	
Nominal flow diameter	5.6 mm (7/32")
Max. flow rate @ 100 psi	1530 l/min (54.0 CFM)*
Max. working pressure	17 bar (250 psi)
Temperature range	-20°C to +80°C (-4°F to +176°F)
Coupling material	Chrome plated brass

Single Shut-off



*Flow capacity measured at 6 bar (87 psi) inlet pressure and pressure drop at 0.5 bar (7 psi).

SOCKET HALVES

PCL INSTANT-AIR
HOSE BARB

PART NUMBER	CONNECTION	PRICE
FPT8813	12 mm 1/2"	£51.62

PLUG HALVES – NON SWIVEL

PCL INSTANT-AIR
MALE THREAD

PART NUMBER	CONNECTION	PRICE
FPT8809	1/4" BSPP	£19.15

PCL INSTANT-AIR
MALE THREAD

PART NUMBER	CONNECTION	PRICE
FPT8826	1/4" BSPP	£31.05
FPT8811	1/2" BSPP	£51.62

PLUG HALVES – SWIVEL

PCL INSTANT-AIR
HOSE BARB

PART NUMBER	CONNECTION	PRICE
FPT8819	1/2"	£47.39

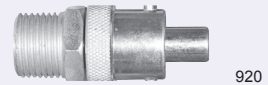
PCL INSTANT-AIR
FEMALE THREAD

PART NUMBER	CONNECTION	PRICE
FPT8824	1/4" BSP	£31.05
FPT8812	1/2" BSPP	£51.62

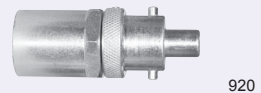
PCL INSTANT-AIR
MALE THREAD

PART NUMBER	CONNECTION	PRICE
FPT8837	1/4" BSPP	£27.65

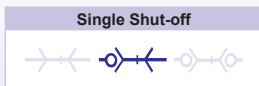
For recoil assemblies,
see page 612.

PCL INSTANT-AIR
MALE THREAD

PART NUMBER	CONNECTION	PRICE
FPT8820	1/2" BSPP	£47.39

PCL INSTANT-AIR
FEMALE THREAD

PART NUMBER	CONNECTION	PRICE
FPT8821	1/2" BSPP	£47.39



FEATURES

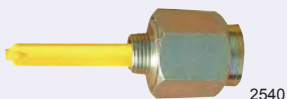
- Series A airline couplings to BS AU 138a: 1980
- Series B airline couplings to BS AU 138b: 2000

SPECIFICATIONS

Max. working pressure	10 bar (145 psi)
Temperature range	-10°C to +80°C (+14°F to +176°F)
Series A body	Carbon steel 5 micron zinc plated and yellow passivate
Series B body	Carbon steel plated 12 micron zinc-iron with black passivate
Series B locking sleeve	Aluminium

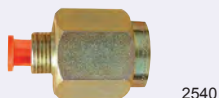
TRACTOR

PARKAIR AIRLINE SERIES A SELF SEALING VALVES



PART NUMBER	CONNECTION	TYPE	PRICE
ZVCM3501	1/2" BSP	Service line	£15.14
ZVCM3770	22 mm	Service line	£15.14

PARKAIR AIRLINE SERIES A SELF SEALING VALVES



PART NUMBER	CONNECTION	TYPE	PRICE
ZVCF3400	1/2" BSP	Emergency line / auxiliary	£13.79
ZVCF3771	22 mm	Emergency line / auxiliary	£13.79

PARKAIR AIRLINE SERIES A



PART NUMBER	CONNECTION	TYPE	PRICE
ZVCF3398	1/2" BSP	Auxiliary	£18.06
ZVCF3763	22 mm	Auxiliary	£18.06

PARKAIR AIRLINE SERIES A



PART NUMBER	CONNECTION	TYPE	PRICE
ZVCF3397	1/2" BSP	Emergency + service line	£13.79
ZVCF3772	22 mm	Emergency + service line	£13.79

PARKAIR AIRLINE SERIES B



PART NUMBER	CONNECTION	TYPE	PRICE
ZVCF4009	1/2" BSP	Emergency line	£32.74
ZVCF4004	16 mm	Emergency line	£32.74
ZVCF4000	22 mm	Emergency line	£32.74

PARKAIR AIRLINE SERIES B



PART NUMBER	CONNECTION	TYPE	PRICE
ZVCF4015	1/2" BSP	Service line	£18.49
ZVCF4003	22 mm	Service line	£18.49

TRAILER

PARKAIR AIRLINE SERIES A



PART NUMBER	CONNECTION	TYPE	PRICE
ZVCM3075	1/2" BSP	Auxiliary	£4.32
ZVCM3734	22 mm	Auxiliary	£4.32

PARKAIR AIRLINE SERIES A VALVE LIFTER



PART NUMBER	CONNECTION	TYPE	PRICE
ZVCF3135	1/2" BSP	Service line	£2.89
ZVCF3774	22 mm	Service line	£2.89

PARKAIR AIRLINE SERIES A



PART NUMBER	CONNECTION	TYPE	PRICE
ZVCM3074	1/2" BSP	Emergency + service line	£3.56
ZVCM3733	22 mm	Emergency + service line	£3.54
ZVCM3734	22 mm	Auxiliary	£4.32

PARKAIR AIRLINE SERIES B



PART NUMBER	CONNECTION	TYPE	PRICE
ZVCM4014	1/2" BSP	Emergency line	£4.10
ZVCM4001	22 mm	Emergency line	£4.11

PARKAIR AIRLINE SERIES B



PART NUMBER	CONNECTION	TYPE	PRICE
ZVCM4010	1/2" BSP	Service line	£23.16
ZVCM4071	16 mm	Service line	£23.24
ZVCM4002	22 mm	Service line	£23.16