

BLOW & WATER GUNS, HOSE REELS & BALANCERS



942

CEJN
Series 208
Blow Guns &
Display Cases



948

COILHOSE
PNEUMATICS
CEG 1 Blow Guns



New
Additions

943

CEJN
Series 208 Blow
Gun Accessories



948

COILHOSE
PNEUMATICS
Redi-Burst Pocket
Blow Guns



944

CEJN
MultiFlow Air
& Fluid Guns
and Accessories



949

COILHOSE
PNEUMATICS
Blow Guns



946

COILHOSE
PNEUMATICS
Typhoon High
Volume Blow Guns
& Accessories



950

COILHOSE
PNEUMATICS
600 Series Metal
Blow Guns &
Accessories



947

COILHOSE
PNEUMATICS
Cannon Extreme
High Volume Blow
Guns



953

PARKAIR Water
& Blow Guns

BLOW & WATER GUNS, HOSE REELS & BALANCERS



954

PARKAIR
Free Angle
Fittings



960

CEJN
Safety Hose Reels



954

COILHOSE
PNEUMATICS
Free Angle
Fittings



962

NAKODA
Hose Reels



955

MEECH
Energy Saving Air
Technology



963

REDASHE
Hose & Cable
Reels



958

PARKAIR
Vacuum
Blow Guns
& Accessories



972

HOZELOCK
Hose Reels,
Hose & Fittings



959

PARKAIR
Tool Balancers



975

HOZELOCK
Sprayers

NEW
EVEN
T
EVEN
N

BLOW GUNS – SERIES 208

FEATURES

- Easy connection
- Ergonomically designed for comfortable handling
- Suspension possible by both the built-in hook and the handle
- The normal grip is adjusted to fit the hand during normal usage
- Extremely durable acetal plastic that also isolates against cold media
- Infinitely variable airflow with high volume flow for efficient cleaning

SPECIFICATIONS

Airflow at inlet pressure of 6 bar (87 psi)	500 l/m (18 CFM)
Max working pressure	Standard blow guns: 16 bar (232 psi) 8 bar (116 psi) blow gun with regulator
Temperature range	-20°C to +60°C (-4°F to +140°F)

APPLICABLE SAFETY STANDARDS



The products with the "OK" symbol are compliant with the OSHA directive STD1-13.1 (1910-242(b)). When dead ending occurs, static pressure at the main orifice shall not exceed 30 psi (2 bar).



The products with the "EAR" symbol are compliant with the International Standard ISO 4414 – Pneumatic Fluid Power and OSHA 1910.95 – Occupational Noise Exposure. These products have a sound level below 85 db(A) and meet the EU Machine Directive §1.5.8. concerning noise reduction demands.



BLOW GUN WITHOUT NOZZLE 1/4" BSPT



620

PART NUMBER	DESCRIPTION	PRICE
C112080000	Blow gun, no nozzle supplied	£14.30



BLOW GUN WITH REGULATOR 1/4" BSPT



620

PART NUMBER	DESCRIPTION	PRICE
C112080300	Blow gun 90 mm, automatic shut-off	£35.56

BLOW GUN WITH 90 MM TUBE 1/4" BSPT



620

PART NUMBER	DESCRIPTION	PRICE
C112080100	Blow gun, non-removable nozzle	£16.09
C112080200	Blow gun, removable nozzle	£16.90



BLOW GUN WITH STAR-TIP 1/4" BSPT



620

PART NUMBER	DESCRIPTION	PRICE
C112083100	Blow gun 90 mm, non-removable nozzle	£17.72
C112083200	Blow gun 90 mm, removable nozzle	£18.65

BLOW GUN DISPLAY CASE

FEATURES

- Blow gun display and contents
- 208 Series
- Easy connection
- Suitable for air and fluids
- Ergonomically designed for comfortable handling

20 PIECE BLOW GUN DISPLAY CASE



620

PART NUMBER	DESCRIPTION	PRICE
C112089984	20 x C112080100	£322.72

20 PIECE 208 STAR-TIP BLOW GUN DISPLAY CASE



620

PART NUMBER	DESCRIPTION	PRICE
C112089986	20 piece 208 star-tip display case	POA

NOZZLES FOR USE WITH C112080000 / C112080200

90 MM TUBE  620

PART NUMBER	DESCRIPTION	PRICE
C112080215	90 mm Tube	£5.09

OK **AIR CURTAIN NOZZLE**  620

PART NUMBER	DESCRIPTION	PRICE
C112089954	Air curtain nozzle	£10.45

OK **90 MM TUBE REGULATOR**  620

PART NUMBER	DESCRIPTION	PRICE
C112080216	90 mm Tube regulator	£23.82

OK **BYPASS NOZZLE**  620

PART NUMBER	DESCRIPTION	PRICE
C112089961	Bypass nozzle	£6.37

EXTENSION TUBE  620

PART NUMBER	DESCRIPTION	PRICE
C112080219	300 mm Tube	£15.47
C112080220	500 mm Tube	£15.78

OK **SILENCER**  620

PART NUMBER	DESCRIPTION	PRICE
C112089962	Silencer	£9.52
C112089965	Silencer nozzle	£2.29

? **400 MM FLEXIBLE TUBE**  620

PART NUMBER	DESCRIPTION	PRICE
C112080222	400 mm Flexible tube	£19.08

OK **?** **VENTURI NOZZLE**  620

PART NUMBER	DESCRIPTION	PRICE
C112089963	Venturi nozzle	£7.89

RUBBER TIP NOZZLE  620

PART NUMBER	DESCRIPTION	PRICE
C112089956	14 mm Rubber tip	£6.49
C112089957	25 mm Rubber tip	£8.16
C112089958	35 mm Rubber tip	£12.82
C112089960	3 Piece rubber tip kit	£23.47

CHIP SHIELD  620

PART NUMBER	DESCRIPTION	PRICE
C112089955	Translucent shield diameter 100 mm	£5.75

MAGNETIC ACCESSORY KIT  620

PART NUMBER	DESCRIPTION	PRICE
C112109000	Magnet, screw, bolt and 2 x fixing plates	£19.39

NOZZLES FOR USE WITH C112080000 / C112083200

? **90 MM STAR-TIP TUBE**  620

PART NUMBER	DESCRIPTION	PRICE
C112083215	90 mm Star-tip tube	£7.73

? **STAR-TIP EXTENSION TUBE**  620

PART NUMBER	DESCRIPTION	PRICE
C112083219	300 mm Star-tip tube	£21.64
C112083220	500 mm Star-tip tube	£21.92

DESCRIPTION

CEJN's new MultiFLOW blow gun effectively cleans surfaces with air or water with unparalleled blowing force. Precise flow is achieved by adjustable flow settings. Nozzle adjusts from narrow jet to wide beam. The MultiFLOW meets and exceeds OSHA safety standards when dead-ended.

FEATURES / BENEFITS

- Unmatched blowing force
- Adjustable flow control
- Adjustable beam

SPECIFICATIONS

Air flow	200 – 1200 l/min (7 – 42 CFM)
Fluid flow	5 – 25 l/min (1.1 – 5.5 GPM UK)
Air sound level	79 – 101 dBA
Max working pressure	16 bar (232 psi)
Min burst pressure	64 bar (928 psi)
Temperature range 16 bar	-20°C to +60°C (-4°F to +140°F)
Temperature range 10 bar	-20°C to +80°C (-4°F to +176°F)
Media	Air and non-explosive water based liquids

MATERIALS

Body	POM, TPE, aluminium
Seal	NBR (nitrile)

APPLICABLE SAFETY STANDARDS



The products with the "OK" symbol are compliant with the OSHA directive STD1-13.1 (1910-242(b)). When dead ending occurs, static pressure at the main orifice shall not exceed 30 psi (2 bar).



The products with the "EAR" symbol are compliant with the International Standard ISO 4414 – Pneumatic Fluid Power and OSHA 1910.95 – Occupational Noise Exposure. These products have a sound level below 85 db(A) and meet the EU Machine Directive §1.5.8. concerning noise reduction demands.



MULTIFLOW BLOW GUN

620

PART NUMBER	CONNECTION	PRICE
C112100400	3/20 Nipple	£56.93



MULTIFLOW BLOW GUN

620

PART NUMBER	CONNECTION	PRICE
C112100450	1/4" Adaptor	£56.93



MULTIFLOW DISPLAY PACK EIGHT PACK

620

PART NUMBER	CONNECTION	PRICE
C112109981	1/4" Adaptor	£455.43

For CEJN Quick Connect Pneumatic Couplings, see pages 6-16 & 21-25.



**MULTIFLOW BLOW GUN
ADJUSTABLE NOZZLE**



620

PART NUMBER	CONNECTION	PRICE
C112100355	1/2" BSPP	£75.62

**MULTIFLOW BLOW GUN
STAR-TIP NOZZLE**



620

PART NUMBER	CONNECTION	PRICE
C112103100	3/20 Nipple	£62.80

**MULTIFLOW BLOW GUN
ADJUSTABLE NOZZLE**



620

PART NUMBER	CONNECTION	PRICE
C112100340	4/17 Nipple	£63.22

**MULTIFLOW BLOW GUN
STRAIGHT 90 MM NOZZLE**



620

PART NUMBER	CONNECTION	PRICE
C112100152	1/4" BSPP Adaptor	£60.27

**MULTIFLOW BLOW GUN
ADJUSTABLE NOZZLE**



620

PART NUMBER	CONNECTION	PRICE
C112100352	1/4" BSPP	£74.10

**MULTIFLOW BLOW GUN
STRAIGHT 90 MM NOZZLE**



620

PART NUMBER	CONNECTION	PRICE
C112100100	3/20 Nipple	£59.49

**MULTIFLOW BLOW GUN
STAR-TIP NOZZLE**



620

PART NUMBER	CONNECTION	PRICE
C112103152	1/4" BSPP	£63.61

**MULTIFLOW BLOW GUN
ADJUSTABLE JET**



620

PART NUMBER	CONNECTION	PRICE
C112100455	1/2" BSPP	£59.73

MULTIFLOW BLOW GUN ACCESSORIES

**MULTIFLOW BLOW GUN
ACCESSORIES
STAR-TIP TUBE NOZZLE**



620

PART NUMBER	DESCRIPTION	PRICE
C112100230	Star-Tip Nozzle	£20.56

**MULTIFLOW BLOW GUN
ACCESSORIES
ADJUSTABLE FLUID NOZZLE**



620

PART NUMBER	DESCRIPTION	PRICE
C112100210	Fluid Nozzle	£33.19

**MULTIFLOW BLOW GUN
ACCESSORIES
STRAIGHT TUBE NOZZLE**



620

PART NUMBER	DESCRIPTION	PRICE
C112100220	Straight Tube Nozzle	£17.25

**MULTIFLOW BLOW GUN
ACCESSORIES
ADJUSTABLE JET NOZZLE**



620

PART NUMBER	DESCRIPTION	PRICE
C112100200	Jet Nozzle	£14.69

DESCRIPTION

The Typhoon is Coilhose's most powerful standard blow gun, delivering up to 34 CFM (2500 series), 51 CFM (3800 series) and over three pounds of thrust at 125 psi. The Typhoon is ideal for heavy duty clean-up and blow-off, and its lightweight and sleek design make this gun a favourite.

FEATURES / BENEFITS

- Delivers up to 34 CFM at 125 psi
- Lightweight and ergonomic
- Variable flow trigger for control
- Maximum flow for easy clean-up and blow-off
- Integral hanging hook
- Wide variety of tips and extensions available

SPECIFICATIONS	2500 Series	3800 Series
Sound level @ 125 psi	85 Db	80 Db
Flow rate @ 125 psi	34 CFM	51 CFM
Thrust	2.1 lbs	3.1 lbs

APPLICABLE SAFETY STANDARDS



The products with the "OK" symbol are compliant with the OSHA directive STD1-13.1 (1910-242(b)). When dead ending occurs, static pressure at the main orifice shall not exceed 30 psi (2 bar).



The products with the "EAR" symbol are compliant with the OSHA 1910.95 – Occupational Noise Exposure. These products have a sound level below 85 db(A).



2500 SERIES 1/4" NPT INLET



2020

PART NUMBER	DESCRIPTION	PRICE
CO-TYP2502	High flow tip blow gun	£25.07
CO-TYP2506	6" Extension & high flow tip blow gun	£29.73
CO-TYP2512	12" Extension & high flow tip blow gun	£31.76
CO-TYP2518	18" Extension & high flow tip blow gun	£33.78
CO-TYP2524	24" Extension & high flow tip blow gun	£34.61
CO-TYP2536	36" Extension & high flow tip blow gun	£39.66
CO-TYP2548	48" Extension & high flow tip blow gun	£42.25
CO-TYP2560	60" Extension & high flow tip blow gun	£45.41
CO-TYP2572	72" Extension & high flow tip blow gun	£51.07

3800 SERIES MULTI-JET TIP BLOW GUN KIT 3/8" NPT INLET



2020

PART NUMBER	DESCRIPTION	PRICE
CO-TYP3802	Multi-jet tip blow gun kit	£50.46



3800 SERIES 3/8" NPT INLET



2020

PART NUMBER	DESCRIPTION	PRICE
CO-TYP3806	6" Extension & multi-jet tip blow gun	£54.61
CO-TYP3812	12" Extension & multi-jet tip blow gun	£57.10
CO-TYP3818	18" Extension & multi-jet tip blow gun	£57.12
CO-TYP3824	24" Extension & multi-jet tip blow gun	£59.40
CO-TYP3836	36" Extension & multi-jet tip blow gun	£63.65
CO-TYP3848	48" Extension & multi-jet tip blow gun	£67.48
CO-TYP3860	60" Extension & multi-jet tip blow gun	£70.64
CO-TYP3872	72" Extension & multi-jet tip blow gun	£73.56



TYPHOON PRO

2020



PART NUMBER	CONNECTION	PRICE
CO-TYP2502M	High flow safety blow gun	£42.00
CO-TYP2502M-06CN	6" Extension & high flow safety blow gun	£44.41
CO-TYP2502M-12CN	12" Extension & high flow safety blow gun	£47.02
CO-TYP2502M-24CN	24" Extension & high flow safety blow gun	£49.51
CO-TYP2502M-48CN	48" Extension & high flow safety blow gun	£57.83
CO-TYP2502M-60CN	60" Extension & high flow safety blow gun	£61.37
CO-TYP2502M-72CN	72" Extension & high flow safety blow gun	£63.73

TYPHOON BLOW GUN ACCESSORIES

HIGH FLOW TIPS

1/2" – 27 UNS THREAD OUTLET



PART NUMBER	DESCRIPTION	PRICE
CO-HFN-00M	With male pipe thread	£5.13
CO-HFN-11M	Chrome plated – with male pipe thread	£11.20
CO-HFN-00F	With female pipe thread	£5.32
CO-EXT06CN	6" Extension high flow tip	£12.97
CO-EXT12CN	12" Extension high flow tip	£14.70
CO-EXT18CN	18" Extension high flow tip	£16.44
CO-EXT24CN	24" Extension high flow tip	£17.42
CO-EXT36CN	36" Extension high flow tip	£20.60
CO-EXT48CN	48" Extension high flow tip	£24.39
CO-EXT60CN	60" Extension high flow tip	£27.73
CO-EXT72CN	72" Extension high flow tip	£30.96

MULTI-JET TIPS

1/2" – 27 UNS THREAD OTLET



PART NUMBER	DESCRIPTION	PRICE
CO-MJN-O	Multi-jet tip	£21.74
CO-EXT06MJ	6" Extension multi-jet tip	£32.57
CO-EXT12MJ	12" Extension multi-jet tip	£33.80
CO-EXT18MJ	18" Extension multi-jet tip	£35.03
CO-EXT24MJ	24" Extension multi-jet tip	£36.62
CO-EXT36MJ	36" Extension multi-jet tip	£41.02
CO-EXT48MJ	48" Extension multi-jet tip	£44.98
CO-EXT60MJ	60" Extension multi-jet tip	£48.36
CO-EXT72MJ	72" Extension multi-jet tip	£51.51

Image shown is CO-EXT-1.

EXTENSIONS

1/2" – 27 UNS THREAD OUTLET



PART NUMBER	DESCRIPTION	PRICE
CO-EXT-1	1" Extension & coupling	£4.72
CO-EXT-2	2" Extension only	£4.30
CO-EXT-6	6" Extension only	£7.03
CO-EXT-12	12" Extension only	£9.86
CO-EXT-18	18" Extension only	£11.66
CO-EXT-24	24" Extension only	£12.50
CO-EXT-36	36" Extension only	£16.20
CO-EXT-48	48" Extension only	£20.17
CO-EXT-60	60" Extension only	£24.03
CO-EXT-72	72" Extension only	£26.53

All Typhoon blow gun accessories are interchangeable with Typhoon high volume blow guns.

CANNON EXTREME HIGH VOLUME BLOW GUNS

FEATURES / BENEFITS

Suitable for anyone with an ample air supply (tow-behind compressor for mobile applications or large capacity compressor found in plants) and has a need to move heavy/stubborn debris. Also suitable for drying or cleaning several small orifices or indentations rapidly. Geared for, but not limited to, indoor use.

Operation/performance: Air consumption equals 120 CFM at 100 psi.

Materials

Die cast aluminium, machined brass and stainless steel body
3/4" NPT female thread port
Wear-points constructed of heat-treated and zinc plated steel tip



MULTI-JET NOZZLE BLOW GUN

EXTENSION MODEL

2020

PART NUMBER	CONNECTION	PRICE
CO-9000-MJP	2" Extension model	£243.42
CO-9000-24MJP	24" Extension model	£274.71
CO-9000-48MJP	48" Extension model	£304.14



SAFETY NOZZLE BLOW GUN

EXTENSION MODEL

2020

PART NUMBER	CONNECTION	PRICE
CO-9000-SP	2" Extension model	£213.04
CO-9000-24SP	24" Extension model	£227.30
CO-9000-48SP	48" Extension model	£241.27

CEG 1 BLOW GUN RANGE

DESCRIPTION

The CEG-1 is ergonomically designed to fit the natural contour of the user's hand, maximising comfort even during long term use. This gives the user a wider range of motion to direct the additional CEG-1 working capacity right where it's needed, resulting in increased blow-off efficiency.

FEATURES / BENEFITS

- The curve of the heavy duty steel lever and soft vinyl grip allows the thumb to rest in a natural position, allowing maximum comfort
- Full-size hanging hook makes the gun easy to store and use
- Unique thermoplastic wrap-around body cover maximises user comfort
- OSHA compliant
- Maximum inlet 150 psi
- Full size hanging hook makes the gun easy to store and use
- Unique thermoplastic, wrap-around body cover maximises user comfort
- OSHA compliant
- Maximum inlet 150 psi

MATERIALS

- Die cast zinc body
- 1/4" NPT female thread port
- Aluminium with black anodised sleeve tip
- Nickel plated steel lever

APPLICABLE SAFETY STANDARDS



The products with the "OK" symbol are compliant with the OSHA directive STD1-13.1 (1910-242(b)). When dead ending occurs, static pressure at the main orifice shall not exceed 30 psi (2 bar).



The products with the "EAR" symbol are compliant with the OSHA 1910.95 – Occupational Noise Exposure. These products have a sound level below 85 db(A).



HIGH FLOW SAFETY NOZZLE



2020

PART NUMBER	CONNECTION	PRICE
CO-CEG-STH	Two stripe 1/4" BSPP	£3.84



Image shows blow gun and tip, which are not included.

EXTENSION ONLY NO TIP

2020

PART NUMBER	CONNECTION	PRICE
CO-CEG-06-DPB	6" Extension	£6.12
CO-CEG-12-DPB	12" Extension	£8.02
CO-CEG-24-DPB	24" Extension	£10.23
CO-CEG-36-DPB	36" Extension	£12.72



HIGH FLOW SAFETY BLOW GUNS

2020

PART NUMBER	CONNECTION	PRICE
CO-CEG-06SHP-DPB	6" Extension	£23.80
CO-CEG-12SHP-DPB	12" Extension	£26.01
CO-CEG-24SHP-DPB	24" Extension	£28.28
CO-CEG-36SHP-DPB	36" Extension	£30.78
CO-CEG-1HP	1/4" BSPP	£18.93

REDI-BURST POCKET BLOW GUN

FEATURES / BENEFITS

- Easily stored in pocket, tool belt or tool box
- Designed for user comfort
- Engineered to deliver the same performance as larger blow guns
- Accepts standard 1/8" tips
- Maximum inlet pressure of 150 psi

MATERIALS

- Die cast zinc (chrome plated) body
- 1/4" NPT female thread port



REDI-BURST MEGAFLOW BLOW GUN

2020

PART NUMBER	CONNECTION	PRICE
CO-RGB-S-11	Megaflow connector	£12.49

BUTTON BLOW GUN FEATURES / BENEFITS

- Compact design
- Economical alternative to lever operated and pistol grip types
- Rugged construction withstands rough handling

IN-LINE BLOW GUN FEATURES / BENEFITS

- Compact and durable with maximum flow
- Ideal for at-the-tool use
- Chrome plated zinc body

APPLICABLE SAFETY STANDARDS



The products with the "OK" symbol are compliant with the OSHA directive STD1-13.1 (1910-242(b)). When dead ending occurs, static pressure at the main orifice shall not exceed 30 psi (2 bar).



The products with the "EAR" symbol are compliant with the OSHA 1910.95 – Occupational Noise Exposure. These products have a sound level below 85 db(A).



BUTTON BLOW GUN

2020

PART NUMBER	DESCRIPTION	PRICE
CO-661	Rubber tip blow gun	£13.76



IN-LINE BLOW GUN

2020

PART NUMBER	DESCRIPTION	PRICE
CO-641	In-line blow gun with rubber tip	£14.00



BUTTON BLOW GUN

2020

PART NUMBER	DESCRIPTION	PRICE
CO-665	Brass standard tip blow gun	£13.24



IN-LINE BLOW GUN

2020

PART NUMBER	DESCRIPTION	PRICE
CO-640S	In-line blow gun with safety tip	£11.85



BUTTON BLOW GUN

2020

PART NUMBER	DESCRIPTION	PRICE
CO-660S	Brass safety tip blow gun	£13.68



FEATURES / BENEFITS

- Durable zinc, die cast body
- Ergonomic design and large operating lever to reduce fatigue and discomfort
- Chrome plated finish for superior corrosion resistance

SPECIFICATIONS

Pressure rating	10 bar (150 psi)
Temperature range	0°C to 80°C (32°F to 180°F)

APPLICABLE SAFETY STANDARDS



The products with the "OK" symbol are compliant with the OSHA directive STD1-13.1 (1910-242(b)). When dead ending occurs, static pressure at the main orifice shall not exceed 30 psi (2 bar).



The products with the "EAR" symbol are compliant with the OSHA 1910.95 – Occupational Noise Exposure. These products have a sound level below 85 db(A).



SAFETY BLOW GUN

1/4" BSPT INLET



2020

PART NUMBER	DESCRIPTION	PRICE
CO-600SDL	Standard safety gun	£11.76



SAFETY BLOW GUN

1/4" BSPT INLET X 1/8" NPSM OUTLET



2020

PART NUMBER	DESCRIPTION	PRICE
CO-603S	3" Safety extension gun	£20.88
CO-606S	6" Safety extension gun	£22.20
CO-608S	8" Safety extension gun	£23.14
CO-610S	10" Safety extension gun	£25.13
CO-612S	12" Safety extension gun	£26.88
CO-616S	16" Safety extension gun	£30.60
CO-618S	18" Safety extension gun	£32.85
CO-624S	24" Safety extension gun	£40.47
CO-630S	30" Safety extension gun	£47.77
CO-636S	36" Safety extension gun	£51.48



SAFETY BLOW GUN

1/4" BSPT INLET



2020

PART NUMBER	DESCRIPTION	PRICE
CO-600STDL	Tamperproof gun	£14.15



SAFETY BLOW GUN

1/4" BSPT INLET X 1/8" NPSM OUTLET



2020

PART NUMBER	DESCRIPTION	PRICE
CO-600FF06	6" Flexible safety extension gun	£29.44
CO-600FF12	12" Flexible safety extension gun	£28.76



SAFETY BLOW GUN

1/4" BSPT INLET



2020

PART NUMBER	DESCRIPTION	PRICE
CO-600SB	Safety booster gun	£15.17



SAFETY BLOW GUN

1/4" BSPT INLET



2020

PART NUMBER	DESCRIPTION	PRICE
CO-600SS	Safety shield gun	£18.86

SAFETY TIPS FOR USE WITH CO-600NT1W



SAFETY STANDARD

1/8" NPSM



2020

PART NUMBER	DESCRIPTION	PRICE
CO-ST10	Safety standard tip	£3.66



SAFETY BOOSTER

1/8" NPSM



2020

PART NUMBER	DESCRIPTION	PRICE
CO-ST11	Safety booster tip	£6.70



SAFETY SHIELD

1/8" NPSM



2020

PART NUMBER	DESCRIPTION	PRICE
CO-ST12	Safety shield	£9.71



STRAIGHT SAFETY EXTENSION

1/8" NPSM



2020

PART NUMBER	DESCRIPTION	PRICE
CO-ST203	3" Straight safety extension	£7.98
CO-ST206	6" Straight safety extension	£10.34
CO-ST208	8" Straight safety extension	£10.67
CO-ST210	10" Straight safety extension	£12.10
CO-ST212	12" Straight safety extension	£14.44
CO-ST216	16" Straight safety extension	£17.80
CO-ST218	18" Straight safety extension	£19.47
CO-ST224	24" Straight safety extension	£26.07
CO-ST230	30" Straight safety extension	£33.60
CO-ST236	36" Straight safety extension	£39.80



FLEXIBLE SAFETY EXTENSION

1/8" NPSM



2020

PART NUMBER	DESCRIPTION	PRICE
CO-STFF06	6" Flexible safety extension	£14.78
CO-STFF12	12" Flexible safety extension	£15.38

NEEDLE TIPS

NEEDLE TIPS

1/8" NPSM



2020

PART NUMBER	SIZE	PRICE
CO-SNT1	0.042 x 1.5/16"	£5.37
CO-SNT2	0.050 x 1.3/16"	£5.37
CO-SNT3	0.072 x 1.3/4"	£5.37
CO-SNT4	0.095 x 2.15/32"	£5.56
CO-SNT5	0.134 x 2.3/4"	£5.37

NEEDLE TIP ASSORTMENT

1/8" NPSM



2020

PART NUMBER	DESCRIPTION	PRICE
CO-SNTKIT	Assortment of tips	£23.13

FEATURES / BENEFITS

- Durable zinc, die cast body
- Ergonomic design and large operating lever to reduce fatigue and discomfort
- Chrome plated finish for superior corrosion resistance

SPECIFICATIONS

Pressure rating	10 bar (150 psi)
Temperature range	0°C to 80°C (32°F to 180°F)



STANDARD BLOW GUN

1/4" BSPT INLET X 1/8" NPSM OUTLET

2020

PART NUMBER	DESCRIPTION	PRICE
CO-600NT1W	Basic gun	£11.22

Meets OSHA requirements when used with safety tips.



STANDARD BLOW GUN

1/4" BSPT INLET X 1/8" NPSM OUTLET

2020

PART NUMBER	DESCRIPTION	PRICE
CO-602	Siphon tip gun	£25.08



STANDARD BLOW GUN

1/4" BSPT INLET X 1/8" NPSM OUTLET

2020

PART NUMBER	DESCRIPTION	PRICE
CO-601	Rubber tip gun	£14.10



STANDARD BLOW GUN

1/4" BSPT INLET X 1/8" NPSM OUTLET

2020

PART NUMBER	DESCRIPTION	PRICE
CO-801	Steel brush gun	£28.54
CO-802	Nylon brush gun	£27.99
CO-803	Horsehair brush gun	£27.99

REPLACEMENT TIPS



RUBBER TIP

1/8" NPSM

2020

PART NUMBER	DESCRIPTION	PRICE
CO-SAT13	Rubber tip	£5.63



SIPHON TIP

1/8" NPSM

2020

PART NUMBER	DESCRIPTION	PRICE
CO-SAT14	Siphon tip	£13.17



BRASS TIP

1/8" NPSM

2020

PART NUMBER	DESCRIPTION	PRICE
CO-SAT15	Brass tip	£2.18



BRUSH TIP

1/8" NPSM

2020

PART NUMBER	DESCRIPTION	PRICE
CO-811	Steel brush	£17.13
CO-822	Nylon brush	£16.42
CO-833	Horsehair brush	£14.62



FLEXIBLE NYLON SHAFT

1/8" NPSM

2020

PART NUMBER	DESCRIPTION	PRICE
CO-FLX7	Flexible nylon shaft	£31.04



TIP

1/8" NPSM

2020

PART NUMBER	DESCRIPTION	PRICE
CO-STT32	Telescoping (8" – 36")	£35.84

WATER GUNS AND BLOW GUNS

FEATURES / BENEFITS

- Heavy duty, rubber cover
- Instantly adjustable spray pattern
- Watertight – can be used inside or outside
- Caustic and fat resistant

SPECIFICATIONS

Water pressure rating	Up to 24 bar (350 psi)
Temperature rating	Up to 80°C (Up to 175°F)



4050

LOW PRESSURE WATER GUN SELF CLOSING

PART NUMBER	DESCRIPTION	PRICE
RWG2	1/2" BSPP	£78.00

FEATURES / BENEFITS

- All metal, water hose gun
- Sturdy construction
- Release of handle provides instant shut-off

SPECIFICATIONS

Water pressure rating	Up to 25 bar (363 psi)
Flow rate	65 l/min
Temperature rating	Up to 50°C (Up to 122°F)



2700

RI-JAC METAL WATER HOSE GUN

PART NUMBER	INLET CONNECTION	PRICE
RJET1	1/2" – 3/4" step-down hoesetail adaptor	£47.82

SPECIFICATIONS

Temperature range	0°C to +60°C (+32°F to +140°F)
Working pressure	Up to 12 bar (175 psi)



4630

BLOW GUN

PART NUMBER	DESCRIPTION	PRICE
ABG5R-14	1/4" BSP ports	£8.55

SPECIFICATIONS

Temperature range	0°C to 0°C (+32°F to +°F)
Working pressure	Up to 10 bar (145 psi)



4630

BLOW GUN WITH SAFETY NOZZLE

PART NUMBER	DESCRIPTION	PRICE
ABG1-14	1/4" BSP ports	£8.50

New



FEATURES

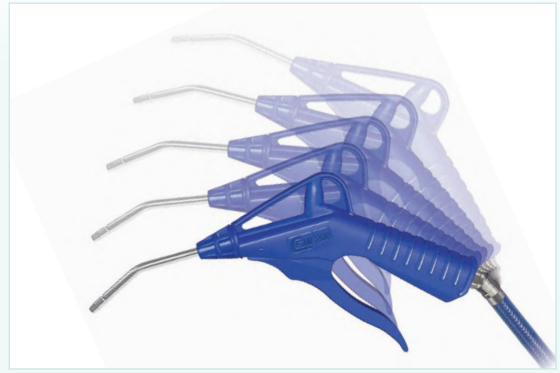
- Greatly reduces the incidence of repetitive strain injuries, such as carpal tunnel syndrome and back stress
- Lightweight and streamlined design
- Two rotation points prevent kinking of the supply hose
- Steel construction for maximum service life
- Rotating joint is supplied with dust cover
- Full 7 mm flow

APPLICATIONS

- Assembly operations in the automotive and electronic industries and spray painting
- Mechanical joints for robotics

SPECIFICATIONS

Medium	Compressed air
Working temperature	-5°C to +60°C (+23°F to +140°F)
Max. working pressure	1Mpa (10.2 kgf/cm ²) • 145 psi
Materials	Nickel plated steel, NBR seal



NICKEL PLATED STEEL CENTRE COVER

FEMALE THREAD X MALE THREAD



3450

PART NUMBER	DESCRIPTION	PRICE
CHNFAG2F-2M	1/4" BSPT female x 1/4" BSPT male	£23.99

FREE ELBOW FITTING FEMALE X FEMALE



3450

PART NUMBER	THREAD	PRICE
CH2HJ2F-2F	1/4" BSPT	£34.84
CH3HJ3F-3F	3/8" BSPT	£43.27
CH4HJ4F-4F	1/2" BSPT	£45.79

EURO STANDARD NIPPLE X MALE THREAD



3450

PART NUMBER	DESCRIPTION	PRICE
CHNFAP2M320	320 Nipple x 1/4" BSPT male	£23.99

FREE ELBOW FITTING MALE X FEMALE



3450

PART NUMBER	THREAD	PRICE
CH2HJ2M-2F	1/4" BSPT Male x 1/4" BSPT Female	£34.84
CH3HJ3M-3F	3/8" BSPT Male x 3/8" BSPT Female	£43.27
CH4HJ4M-4F	1/2" BSPT Male x 1/2" BSPT Female	£45.79

NICKEL PLATED STEEL CENTRE COVER

EURO STANDARD NIPPLE X FEMALE THREAD



3450

PART NUMBER	DESCRIPTION	PRICE
CO-11-04BSF	320 Nipple x 1/4" BSPP female	£23.30

EURO STANDARD NIPPLE X MALE THREAD



3450

PART NUMBER	DESCRIPTION	PRICE
CO-11-04BS	320 Nipple x 1/4" BSPT	£23.68

AIR CURTAIN

FEATURES AND BENEFITS

- 25:1 air amplification
- Up to 30 dBA noise reduction
- Health and safety compliant
- Low maintenance – no moving parts
- Ease of mounting – flange running the entire length

APPLICATIONS

- Product drying
- Product cooling
- Swarf contamination removal
- Air saving - reduction of energy bills
- Compressor demand reduction
- Noise reduction



AIR CURTAIN ALUMINIUM

5700

PART NUMBER	LENGTH	THREAD SIZE	PRICE
AIRM-A85003	80 mm	1 x 1/4" BSPP	£160.06
AIRM-A85004	100 mm	1 x 1/4" BSPP	£219.02
AIRM-A85006	150 mm	1 x 1/4" BSPP	£221.83
AIRM-A85012	300 mm	1 x 1/4" BSPP	£283.61
AIRM-A85018	450 mm	1 x 1/4" BSPP	£345.38
AIRM-A85024	600 mm	2 x 1/4" BSPP	£412.78
AIRM-A85030	750 mm	2 x 1/4" BSPP	£504.04
AIRM-A85031	800 mm	2 x 1/4" BSPP	£561.60
AIRM-A85036	900 mm	2 x 1/4" BSPP	£609.34
AIRM-A85048	1200 mm	4 x 1/4" BSPP	£849.42
AIRM-A85055	1400 mm	4 x 1/4" BSPP	£971.57
AIRM-A85071	1800 mm	6 x 1/4" BSPP	£1415.23

AIR AMPLIFIER

Product Code	Outlet Diameter (mm)	Inlet Air Pressure psi Bar	Air Consumption										Sound Level*					
			cfm			l/min							dBA					
			20	40	60	80	100	20	40	60	80	100	20	40	60	80	100	
AIRM-A15005	18		1.4	2.7	4.1	5.4	6.8	1.4	2.7	4.1	5.4	6.8	1.4	2.7	4.1	5.4	6.8	
AIRM-A15008 & AIRM-A100008	32		4	8	10	13	15	113	227	283	368	425	70	75	82	83	86	
AIRM-A15006	37		8	11	13	15	17	227	311	368	425	481	59	73	76	79	83	
AIRM-A15015 & AIRM-A10015	51		9	14	19	23	27	255	396	538	651	765	66	77	82	83	86	
AIRM-A15030 & AIRM-A10030	100		13	18	22	25	28	368	510	623	708	793	59	69	75	78	83	
			15	21	26	30	34	425	595	736	850	963	59	68	73	75	78	

FEATURES AND BENEFITS

- 4 to 25:1 air amplification – can cut compressed air demand by 70%
- Up to 30 dBA noise reduction
- Health and safety compliant
- Low maintenance – no moving parts
- Application specific set-up (no shims) – fully adjustable

APPLICATIONS

- Product redirection
- Product drying
- Air saving - reduction of energy bills
- Compressor demand reduction
- Noise reduction
- Product cooling
- Blowing and vacuum applications



AIR AMPLIFIER ALUMINIUM

5700

PART NUMBER	OUTLET DIA	THREAD SIZE	PRICE
AIRM-A15005	18 mm	M5 x 6 mm	£147.42
AIRM-A15006	37 mm	G1 x 6 mm	£182.52
AIRM-A15008	32 mm	1/4" BSPP	£150.23
AIRM-A15015	51 mm	3/8" BSPP	£196.56
AIRM-A15030	100 mm	1/2" BSPP	£550.37

STAINLESS STEEL

AIRM-A10008	32 mm	1/4" BSPP	£400.14
AIRM-A10015	51 mm	3/8" BSPP	£452.09
AIRM-A10030	100 mm	1/2" BSPP	POA

HIGH THRUST JET

FEATURES AND BENEFITS

- 4 to 6:1 air amplification
- Up to 30 dBA noise reduction
- Health and Safety compliant
- Low maintenance – no moving parts
- Application specific set-up
- Cuts compressed air usage

APPLICATIONS

- Air saving - reduction of energy bills
- Compressor demand reduction
- Noise reduction
- Swarf removal
- Material conveying
- Product drying
- Product cooling



HIGH THRUST JET STAINLESS STEEL

5700

PART NUMBER	OUTLET DIA	THREAD SIZE	PRICE
AIRM-A38038-SS	13 mm	1/8" BSPT male	£99.68
AIRM-A38044-SS	13 mm*	1/8" BSPT male	£99.68

* In-line high thrust jet.

SAFETY BLOW GUN
DESCRIPTION

Meech Energy Saving Nozzles and Blow guns direct compressed air over a curved surface on the outside of the nozzle. This action entrains the ambient air and amplifies the total air flow. Meech Nozzles and Blow guns can save up to 70% of compressed air demand, whilst significantly reducing noise levels. They have hundreds of applications and will significantly reduce running costs.

FEATURES AND BENEFITS

- 25:1 air amplification
- Up to 30 dBA noise reduction
- Health and safety compliant
- Low maintenance – no moving parts
- Application specific set-up
- Operator comfort – ergonomic lightweight aluminium handle

APPLICATIONS

- Air saving - reduction of energy bills
- Compressor demand reduction
- Swarf removal
- Any blow gun task

SPECIFICATIONS

Inlet air pressure	Air consumption	Sound level
20 psi (1.4 bar)	5 cfm (142 lpm)	65 dBA
40 psi (2.7 bar)	9 cfm (255 lpm)	71 dBA
60 psi (4.1 bar)	12 cfm (340 lpm)	76 dBA
80 psi (5.4 bar)	15 cfm (425 lpm)	79 dBA
100 psi (6.8 bar)	18 cfm (510 lpm)	81 dBA



5700

STAINLESS STEEL NOZZLE

PART NUMBER	THREAD SIZE	PRICE
AIRM-A45400-SS	1/4" BSPP	£61.78

ALUMINIUM NOZZLE

AIRM-A45400	1/4" BSPP	£26.68
-------------	-----------	--------

ENERGY SAVING SAFETY NOZZLE
FEATURES AND BENEFITS

- 25:1 air amplification
- Up to 30dBA noise reduction
- Health and safety compliant
- Low maintenance - no moving parts
- Application specific set-up
- Fits two thread types

APPLICATIONS

- Air saving - reduction of energy bills
- Compressor demand reduction
- Noise reduction
- Parts ejection
- Swarf removal
- Cooling of parts

SPECIFICATIONS

Inlet air pressure	Air consumption	Sound level
20 psi (1.4 bar)	5 cfm (142 lpm)	65 dBA
40 psi (2.7 bar)	9 cfm (255 lpm)	71 dBA
60 psi (4.1 bar)	12 cfm (340 lpm)	76 dBA
80 psi (5.4 bar)	15 cfm (425 lpm)	79 dBA
100 psi (6.8 bar)	18 cfm (510 lpm)	81 dBA



5700

ADJUSTABLE PACK OF 5 STAINLESS STEEL

PART NUMBER	THREAD SIZE	PRICE
AIRM-A40009-1/8	1/8" BSP Male	£219.02
AIRM-A40009-1/4	1/4" BSP Male	£219.02

ALUMINIUM

AIRM-A48009-1/8	1/8" BSP Male	£98.28
AIRM-A48009-1/4	1/4" BSP Male	£98.28

COLDSTREAM AIR GUN
DESCRIPTION

Coldstream Air Guns, from Meech, use compressed air to provide a cold air source commonly used for spot cooling. Available in adjustable and non-adjustable versions with a choice of knuckle trunking. The Coldstream Air Gun is capable of achieving temperatures that are over 40°C below the compressed air temperature.

FEATURES AND BENEFITS

- Available in two sizes
- Up to 30 dBA noise reduction
- Health and safety compliant
- Low maintenance – no moving parts
- Application specific set-up – supplied with 4 generators
- Easy to install – secure in place with a strong magnet

APPLICATIONS

- Ultrasonic weld cooling
- Spot cooling
- Component cooling
- Tool cooling



5700

ADJUSTABLE

PART NUMBER	SIZE	OUTLET	PRICE
AIRM-A60015A	280 mm x 54 mm	Single	£425.41
AIRM-A60015AY	280 mm x 54 mm	Double	£432.43

NON-ADJUSTABLE

AIRM-A60015	280 mm x 54 mm	Single	£400.14
AIRM-A60015Y	280 mm x 54 mm	Double	£414.18
AIRM-A60008	229 mm x 45 mm	Single	£422.60

NEEDLE COOLER
DESCRIPTION

Needle Coolers, from Meech, use compressed air to provide a cold air source. Combining a small vortex tube, hot-end silencer and flexible knuckle trunking that direct the cold air flow to the target. Typically used to cool sewing needles, a magnetic mounting bracket means the cooler can be fixed to virtually any metal surface. The Needle Cooler is capable of providing a cold air source up to 50°C below the compressed air temperature.

FEATURES AND BENEFITS

- Stainless steel construction – hard wearing
- Low maintenance – no moving parts
- Suitable for harsh environments
- Easy direction of cold airflow
- Quick and easy mounting – magnetic base



5700

NEEDLE COOLER

PART NUMBER	SIZE	OUTLET	PRICE
AIRM-A20503	148 mm x 45 mm	Single	£300.46
AIRM-A20504	148 mm x 45 mm	Double	£317.30

CABINET COOLER

DESCRIPTION

Meech Air Technology Stainless Steel Cabinet Cooler Systems provide a cold air source to stop cabinets overheating and prevent ingress of contamination, such as dust or moisture. When compared to fans that are commonly found in cabinets, Meech Cabinet Cooling Systems provide the ideal cooling solution.

FEATURES AND BENEFITS

- Alternative to traditional AC units
- Up to 30 dBA noise reduction
- Health and safety compliant
- Low maintenance – no moving parts
- Application specific set-up
- Easy to install
- Prevents dust entering the cabinet

APPLICATIONS

- Industrial PC cooling
- CCTV cooling
- Cooling equipment on marine vessels
- Machine panel cooling
- Cooling LCD touch screens



CABINET COOLER UNIT

5700

PART NUMBER	INCLUDES	PRICE
AIRM-A70025	4 Generators	£497.02



EX CABINET COOLER UNIT

5700

PART NUMBER	INCLUDES	PRICE
AIRM-A70025EX	4 Generators and 2.5 m of cooling tube	£624.78

CABINET COOLER SYSTEM

AIRM-A70325-24	24 V Solenoid and thermostat	£704.81
AIRM-A70325-240	240 V Solenoid and thermostat	£704.81
AIRM-A70325-110	110 V Solenoid and thermostat	£704.81

VORTEX TUBE

DESCRIPTION

Meech Air Technology Stainless Steel Vortex Tubes convert compressed air into two airflows, one extremely cold and the other extremely hot. Vortex tubes have no moving parts and can produce a drop in temperature up to 50°C below the compressed air temperature, whilst hot air can be up to 50°C above compressed air temperature.

FEATURES AND BENEFITS

- Cold air to 50°C below compressed air temperature
- Hot air to 50°C above compressed air temperature
- Hard wearing – manufactured from stainless steel
- Maintenance free – no moving parts
- Accurate temperature control

APPLICATIONS

- Spot cooling
- Weld cooling
- Plastic slitting
- Product cooling
- Foodstuffs cooling



SMALL

5700

PART NUMBER	AIR CONSUMPTION	DESCRIPTION	PRICE
AIRM-A20008	8 cfm	Refrig H	£251.32
AIRM-A21008	8 cfm	Cold L	£251.32

MEDIUM

AIRM-A20010	10 cfm	Refrig H	£299.05
AIRM-A21010	10 cfm	Cold L	£299.05
AIRM-A20015	15 cfm	Refrig H	£299.05
AIRM-A21015	15 cfm	Cold L	£299.05
AIRM-A20025	25 cfm	Refrig H	£299.05
AIRM-A21025	25 cfm	Cold L	£299.05
AIRM-A20035	35 cfm	Refrig H	£299.05
AIRM-A21035	35 cfm	Cold L	£299.05

EXPERIMENTAL KITS

DESCRIPTION

The Meech Experimental Kit incorporates a Meech Vortex Tube with a Cold End Silencer and a length of flexible knuckle trunking, which can be used to direct the air flow. The Experimental Kit also includes all 8 generators, that allows for the most flexible temperature and air consumption, perfect for applications that require changing cold air temperature.

FEATURES AND BENEFITS

- Low maintenance – no moving parts
- Suitable for a range of applications
- No electricity costs
- Available in 2 sizes
- Runs only on compressed air
- Stainless steel construction – hard wearing
- Provided with full range of generators (temperature control)



EXPERIMENTAL KITS

HIGH AND LOW COLD FRACTION

5700

PART NUMBER	AIR CONSUMPTION	SIZE	LENGTH	PRICE
AIRM-A20300	8 – 10 cfm	Small	239 mm	£345.38
AIRM-A20400	10 – 35 cfm	Medium	272 mm	£362.23

FEATURES / BENEFITS

- Made from nylon 6 abrasive resistant material
- Low air consumption
- Hand held or static site
- Blow or vacuum
- Use filtered air @ 60 – 115 psi / 10 mm bore air-line

SPECIFICATIONS	LVM 22	LVM AP 22
CFM @ 60 psi	9 in / 54 out	9 in / 54 out
CFM @ 100 psi	14.5 in / 101.5 out	14.5 in / 101.5 out
Air inlet size	1/4" BSPT male	1/4" compression fitting
Conveying hose ID bore	32 mm	32 mm

SAFETY

We recommend that dry filtered compressed air and appropriate safety equipment is used with this product.

For optimum performance, the air feed line should be at least 3/8" ID bore.



VACUUM BLOW GUNS



REVERSIBLE AIR GUN 2700

PART NUMBER	DESCRIPTION	PRICE
LVM22	Hand held	£61.14



REVERSIBLE AIR PUMP 2700

PART NUMBER	DESCRIPTION	PRICE
LVMAP22	Static site (inlet size 5/16" OD)	£51.08



DEEP HOLE GUN 2700

PART NUMBER	DESCRIPTION	PRICE
LVM22D/H	For blind holes up to 450 mm deep	£59.14

ACCESSORIES



DUST BAG 2700

PART NUMBER	DESCRIPTION	PRICE
LVM22-1	Complete with clip	£26.03



EXTENSION TUBE 2700

PART NUMBER	DESCRIPTION	PRICE
LVM22-3	Extension tube	£11.09



CREVICE NOZZLE 2700

PART NUMBER	DESCRIPTION	PRICE
LVM22-5	Crevice nozzle	£6.33



ROUND BRUSH 2700

PART NUMBER	DESCRIPTION	PRICE
LVM22-6	60 mm diameter	£6.48



CONVEYING HOSE 2700

PART NUMBER	DESCRIPTION	PRICE
LVM22-4	1 metre length	£9.55

FLEX TYPE A FEATURES

- High impact resistant composite housing
- 7 Models selected for a load range from 0 to 3.5 kg
- Adjustable spring load throughout and ergonomic handgrip knob
- Adjustable rope stroke
- Available with nylon braided rope or steel braided, nylon coated wire
- Tools in conformity with CE directives



4610

FLEX TYPE A NYLON BRAIDED ROPE

PART NUMBER	LOADING CAPACITY	WEIGHT	CORD LENGTH	PRICE
SF0-05	0 – 0.5 kg	0.3 kg	2.3 m	£56.40
SF05-1	0.5 – 1 kg	0.35 kg	2.3 m	£56.40
SF1-2	1 – 2 kg	0.4 kg	2.3 m	£56.40
SF2-35	2 – 3.5 kg	0.4 kg	2.3 m	£56.40

FLEX TYPE B FEATURES

- Metal housing
- 14 Models selected for a load range from 0.5 to 11 kg
- Adjustable spring load throughout and safety removable handle
- Adjustable rope stroke
- Available with nylon braided rope or steel braided, nylon coated wire
- Tools in conformity with CE directives



4610

FLEX TYPE B NYLON ROPE

PART NUMBER	LOADING CAPACITY	WEIGHT	CORD LENGTH	PRICE
FLEX05-1	0.5 – 1 kg	0.6 kg	2.3 m	£58.03
FLEX05-15	0.5 – 1.5 kg	0.6 kg	2.3 m	£58.03
FLEX1-2	1 – 2 kg	0.65 kg	2.3 m	£58.03
FLEX2-35	2 – 3.5 kg	0.65 kg	2.3 m	£58.03

STEEL BRAIDED NYLON COATED WIRE

FLEX05-1A	0.5 – 1 kg	0.6 kg	2.3 m	£61.78
FLEX05-15A	0.5 – 1.5 kg	0.6 kg	2.3 m	£61.78
FLEX1-2A	1 – 2 kg	0.65 kg	2.3 m	£61.78
FLEX2-35A	2 – 3.5 kg	0.65 kg	2.3 m	£61.78
FLEX3-6A	3 – 6 kg	1.64 kg	2.3 m	£93.89
FLEX5-85A	5 – 8.5 kg	1.7 kg	2.3 m	£93.89
FLEX8-11A	8 – 11 kg	1.75 kg	2.3 m	£93.89

FLEX TYPE C FEATURES

- Metal housing
- 10 Models selected for a load range from 1 to 70 kg
- Adjustable spring load
- Adjustable rope stroke
- Steel rope
- Safety device against spring break off
- Tools in conformity with CE directives



4610

FLEX TYPE C

PART NUMBER	LOADING CAPACITY	WEIGHT	CORD LENGTH	PRICE
FLEX-3	1 – 3 kg	1.4 kg	1.5 m	£101.06
FLEX-5	3 – 5 kg	1.5 kg	1.5 m	£101.06
FLEX-9	5 – 9 kg	3.4 kg	1.5 m	£270.58
FLEX-15	9 – 15 kg	3.8 kg	1.5 m	£270.58
FLEX-22	15 – 22 kg	7.2 kg	1.5 m	£400.98
FLEX-30	22 – 30 kg	8.5 kg	1.5 m	£400.98
FLEX-40	30 – 40 kg	9.8 kg	1.5 m	£544.42
FLEX-50	40 – 50 kg	10.4 kg	1.5 m	£544.42
FLEX-60	50 – 60 kg	11.6 kg	1.5 m	£563.98
FLEX-70	60 – 70 kg	11.8 kg	1.5 m	£580.28

MATIC FEATURES

- Composite housing
- 3 Models selected for a load range from 0.5 to 5 kg
- Adjustable spring load
- 6.5 x 10 mm soft braided polyurethane hose
- Adjustable hose stroke
- Tools in conformity with CE directives



4610

MATIC

PART NUMBER	LOADING CAPACITY	WEIGHT	CORD LENGTH	PRICE
MATIC15	0.5 – 1.5 kg	1.6 kg	1.6 m	£177.67
MATIC30	1.5 – 3.0 kg	1.7 kg	1.6 m	£177.67
MATIC50	3.0 – 5.0 kg	1.8 kg	1.6 m	£177.67

Matic hose diameter internal 6.5 mm / external 10 mm.
Maximum working pressure 10 bar.



HIGH QUALITY

CEJN's high quality hose and cable reels contain a CEJN polyurethane hose or rubber cable. The reels are easy to manoeuvre and can be ceiling or wall-mounted and offer full, 300 degree movement. A robust exterior housing protects the hose or cable and reel mechanism, and the feeding action works flawless and tangle free. A stop function can be activated if full continuous feeding is not necessary at the time.

FEATURES AND BENEFITS

- High flow and low pressure drop
- Strong, slow retraction
- Quicker hose change
- Hose guide
- Soft stop-ball prevents tripping
- Lowest pressure drop on the Market

SPECIFICATIONS

PART NUMBER	MAX. WORKING PRESSURE	TEMPERATURE RANGE	MEDIA
C199112082	16 bar	-20°C to +60°C	Air
C199112182	16 bar	-20°C to +60°C	Air
C199112020	16 bar	-20°C to +60°C	Air
C199112022	16 bar	-20°C to +60°C	Air
C199112120	16 bar	-20°C to +60°C	Air
C199112130	16 bar	-20°C to +60°C	Air
C199112132	16 bar	-20°C to +60°C	Air
C199112140	12 bar	-20°C to +60°C	Air
C199112040	12 bar	-20°C to +60°C	Air
C199112150	10 bar	-20°C to +60°C	Air
C199112088	16 bar	-20°C to +60°C	Air
C199112168	16 bar	-20°C to +60°C	Air
C199112028	16 bar	-20°C to +60°C	Air
C199112128	16 bar	-20°C to +60°C	Air
C199112138	16 bar	-20°C to +60°C	Air
C199112230	9 bar	5°C to +60°C	Water
C199112240	9 bar	5°C to +60°C	Water

PART NUMBER	POWER OUTPUT		TEMPERATURE RANGE	MEDIA
	FULLY UNWOUND	FULLY WOUND		
C199112310	2400 W	1600 W	-10°C to +50°C	Electric
C199112311	2400 W	1600 W	-10°C to +50°C	Electric

STANDARDS

CE Marked in compliance with 2006/42/EC



COMPRESSED AIR HOSE REELS



COMPRESSED AIR HOSE REEL
320 ESAFE CONNECTION

610

PART NUMBER	ID X OD	LENGTH	PRICE
C199112082	8 x 12 mm	10 m	£293.67
C199112182	8 x 12 mm	17 m	£349.20

1/4" BSPT STANDARD MALE CONNECTION

C199112020	8.0 x 12.0 mm	7 m	£265.41
C199112022	8.0 x 12.0 mm	10 m	£289.90
C199112120	8.0 x 12.0 mm	17 m	£345.43

3/8" BSPT STANDARD MALE CONNECTION

C199112130	9.5 x 13.5 mm	14 m	£351.66
------------	---------------	------	---------

3/8" BSPT STANDARD ANTI-SPARK CONNECTION

C199112132	9.5 x 13.5 mm	14 m	£373.35
------------	---------------	------	---------

1/2" BSPT STANDARD MALE CONNECTION

C199112040	11 x 16 mm	5 m	£307.06
C199112140	11 x 16 mm	10 m	£384.33
C199112150	13 x 18 mm	8 m	£393.23

HOSE REELS WITH HI-VIS HOSE



HOSE REEL WITH HI-VIS HOSE
320 ESAFE CONNECTION

610

PART NUMBER	ID X OD	LENGTH	PRICE
C199112088	8.0 x 12.0 mm	10 m	£304.91
C199112168	9.5 x 13.5 mm	14 m	£373.39

1/4" BSPT STANDARD MALE CONNECTION

C199112028	8.0 x 12.0 mm	10 m	£301.14
C199112128	8.0 x 12.0 mm	17 m	£362.30

3/8" BSPT STANDARD MALE CONNECTION

C199112138	9.5 x 13.5 mm	14 m	£369.61
------------	---------------	------	---------

WATER HOSE REELS



WATER HOSE REEL
3/8" BSPT CONNECTION

610

PART NUMBER	ID X OD	LENGTH	PRICE
C199112230	9.5 x 13.5 mm	14 m	£377.21

1/2" BSPT CONNECTION

C199112240	11 x 16 mm	10 m	£389.31
------------	------------	------	---------

ELECTRIC HOSE REELS



ELECTRIC HOSE REEL
SCHUKO PLUG

610

PART NUMBER	ID X OD	LENGTH	PRICE
C199112310	3 x 1.5 mm	17 m	£445.05

CH PLUG

C199112311	3 x 1.5 mm	17 m	£445.05
------------	------------	------	---------

PRO-SERIES AIR / WATER HOSE

FEATURES / BENEFITS

- High impact, UV stabilised polypropylene construction
- All units come complete with fitted main hose assembly and 2 metre connecting / feedhose
- Fixed or 180° pivoting wall bracket
- All units, as standard, include the Helix Ultra Coil® technology self layering hose system
- Lightweight material construction
- Suitable for both compressed air and water
- Fold flat carry handle
- Hose guard supplied
- Swivel outlet fitting on all compressed air units
- Solid brass main swivel shaft and hose fittings
- 2 Year manufacturer's warranty (excludes hose assemblies and seals)

SPECIFICATIONS	15 Series	20 Series
Air / water hose	C/W 15 m x 12.5 mm	C/W 20 m x 10 mm
Hose material	Reinforced PVC braided (red)	
Reel / case type	Polypropylene	
Weight	9 kg	
Max working pressure	300 psi (20 bar)	
Max working temperature	40°C / 140°F	

2 YEAR
MANUFACTURER'S
WARRANTY



4040

AIR / WATER HOSE REELS 15 SERIES

PART NUMBER	HOSE ID	HOSE OD	INLET	OUTLET	PRICE
HR-PS15-12AW	12.5 mm	18.5 mm	1/2" BSP female brass swivel	1/2" BSPT male brass swivel	£159.00

20 SERIES

HR-PS20-10AW	9.5 mm	16 mm	3/8" BSP female brass swivel	3/8" BSPT male brass swivel	£163.00
--------------	--------	-------	------------------------------	-----------------------------	---------

SERIES 20 WATER HOSE

FEATURES / BENEFITS

- High impact and weather resistant UV stabilised polypropylene construction
- Fully enclosed outer case protects hose and inner drum
- Auto lock and auto rewind mechanism
- Reinforced PVC braided hose with an additional 2 metre connecting hose
- All units, as standard, include the Helix Ultra Coil® Technology self layering hose system
- Complete with fixed or 180° pivoting wall bracket
- Quality brass hose connectors, tap fittings and water spray gun included
- Lightweight material construction
- Fold flat carry handle
- Solid wall installation
- 2 Year manufacturer's warranty (excludes hose assemblies and seals)

SPECIFICATIONS	
Water hose	Nakoda Series C/W 20 m x 11.5 mm
Hose material	Heavy duty water hose
Reel / case type	Polypropylene
Weight	9 kg
Max working pressure	150 psi (10 bar)
Max working temperature	60°C / 140°F

2 YEAR
MANUFACTURER'S
WARRANTY



4040

WATER HOSE REEL

PART NUMBER	HOSE ID	HOSE OD	INLET	OUTLET	PRICE
HR-PS20-12W	11.5 mm	16 mm	3/4" BSP male brass swivel	3/4" BSP tap quick connect	£99.00

SLOW RETRACTION SAFETY HOSE REELS

FEATURES / BENEFITS

- Reduced recoil speed can be adjusted on site to suit the operator / environment
- Constructed in heavy duty, powder coated, mild steel or stainless steel
- Twin pedestal design
- Full width, roller guide assembly
- Optional pivoting wall bracket
- 90°C working temperature
- Durable nylon bearing assemblies
- 400 & 600 bar upgrades available
- Supplied as bare reel (hose kits at extra cost)
- Ribbed side arms for extra rigidity
- Fully ported flow path for maximum product delivery
- Externally mounted swivel assembly for easy service and maintenance
- Long term spare parts availability
- Latching of hose assembly at any desired length
- 12 month manufacturer's warranty

1 YEAR
MANUFACTURER'S
WARRANTY



4045

POWDER COATED

PART NUMBER	HOSE ID	LENGTH	WORKING PRESSURE	PRICE
HR-AV1000FEBK	1/2"	15 m	200 bar	£718.27
HR-AV1100FEBK	1/2"	20 m	200 bar	£915.26
HR-AV3500FEBK	1/2"	30 m	200 bar	£1098.27
HR-AV6000FEBK	1/2"	50 m	200 bar	£1743.71
HR-AV1200FEBK	3/4"	10 m	80 bar	£839.88
HR-AV1300FEBK	3/4"	15 m	80 bar	£1052.67
HR-AV3501FEBK	3/4"	18 m	80 bar	£1128.67
HR-AV3502FEBK	3/4"	22 m	80 bar	£1350.52
HR-AV3503FEBK	3/4"	30 m	80 bar	£1432.67

1 YEAR
MANUFACTURER'S
WARRANTY



4045

304 STAINLESS STEEL

PART NUMBER	HOSE ID	LENGTH	WORKING PRESSURE	PRICE
HR-AV1000BK	1/2"	15 m	200 bar	£1057.41
HR-AV1100BK	1/2"	20 m	200 bar	£1137.68
HR-AV3500BK	1/2"	30 m	200 bar	£1396.40
HR-AV6000BK	1/2"	50 m	200 bar	£2040.66
HR-AV1200BK	3/4"	10 m	80 bar	£1098.27
HR-AV1300BK	3/4"	15 m	80 bar	£1402.26
HR-AV3501BK	3/4"	18 m	80 bar	£1387.07
HR-AV3502BK	3/4"	22 m	80 bar	£1495.30
HR-AV3503BK	3/4"	30 m	80 bar	£1615.07

RETRACTA SERIES

REDASHE WARRANTY DETAILS

All products supplied by Redashe are warranted from one to 10 years, depending on manufacturer. Hose supplied by Redashe carries the warranty as listed by the manufacturer. A flexible connection must be used between the hose reel and supply. Use of a solid connection will void the swivel warranty. Redashe meets the requirements of BS EN ISO 9001:2008. Certification of the system was obtained by BSI Quality Assurance on 9th December 1991, number 4601QM8001.

All warranties cover reel only and exclude any hose supplied.

REINFORCED PVC HOSE

FEATURES / BENEFITS

- Tough, corrosion free polypropylene construction
- Supplied with fitted hose for specified application
- Choice of lockable mounting brackets
- Virtually maintenance free
- Lightweight – average just 10 kg, easy to install
- Full automatic hose rewind for neat and tidy storage
- Low effort, easy-to-use rewind tension



RED REEL COMPLETE WITH HOSE FOR COMPRESSED AIR



4000

16 bar Working Pressure

PART NUMBER	HOSE ID	LENGTH	INLET SIZE	HOSE OUTLET	PRICE
hAR100	3/8"	20 m	3/8" BSPF	1/4" BSPM	£420.99
hAR200	1/2"	15 m	3/8" BSPF	3/8" BSPM	£445.39

FOR BREATHING AIR

12 bar Working Pressure

PART NUMBER	HOSE ID	LENGTH	INLET SIZE	HOSE OUTLET	PRICE
hBH100	3/8"	15 m	3/8" BSPF	3/8" BSPM	£705.94



BLUE REEL COMPLETE WITH HOSE FOR COLD WASH 40°C



4000

10 bar Working Pressure

PART NUMBER	HOSE ID	LENGTH	INLET SIZE	HOSE OUTLET	PRICE
hCW100	1/2"	15 m	3/8" BSPF	Bare Hose	£504.88

PVC HOSE



GREEN REEL COMPLETE WITH HOSE FOR GARDENS



4000

7 bar Working Pressure

PART NUMBER	HOSE ID	LENGTH	INLET SIZE	HOSE OUTLET	PRICE
hDR100	1/2"	18 m	3/8" BSPF	1/2" BSPM	£413.12

REINFORCED RUBBER HOSE



RED REEL COMPLETE WITH HOSE FOR HOT WASH 90°C



4000

10 bar Working Pressure

PART NUMBER	HOSE ID	LENGTH	INLET SIZE	HOSE OUTLET	PRICE
hHW100	1/2"	12 m	3/8" BSPF	3/8" BSPM	£571.99

FOR PROPANE

21 bar Working Pressure

PART NUMBER	HOSE ID	LENGTH	INLET SIZE	HOSE OUTLET	PRICE
hHW100P	3/8"	15 m	3/8" BSPF	3/8" BSPM	£564.38

FOR FOOD QUALITY WATER 95°C

21 bar Working Pressure

PART NUMBER	HOSE ID	LENGTH	INLET SIZE	HOSE OUTLET	PRICE
hFQ100	1/2"	12 m	3/8" BSPF	1/2" BSPM	£604.02

REELWORKS SERIES

POLYPROPYLENE 60°C MAX

FEATURES / BENEFITS

- Lightweight and durable, just 5.7 kgs
- Constructed in high-impact UV stabilised polypropylene
- Supplied with fitted PVC hose for immediate installation
- Fully assembled, includes 3' connecting hose
- Suitable for compressed air and water
- Integral wall/overhead mounting bracket
- Latching of hose at any length
- Fully automatic hose rewind for neat and tidy storage
- Virtually maintenance free



REEL WITH HOSE
60°C MAXIMUM TEMPERATURE

4000

PART NUMBER	HOSE ID	LENGTH	MAXIMUM PRESSURE	PRICE
hC705100	1/4"	10 m	12 bar	£140.03
hC705200	5/16"	8 m	12 bar	£139.38

POLYMER HOSE COMPACT

FEATURES

- Supplied with 15 m x 3/8" or 1/2" flexible, premium hybrid polymer hose
- Hose has no memory and lays flat when in use
- High quality, durable polypropylene housing
- Fully automatic spring rewind
- Low effort, easy to use, rewind tension
- Integral pivoting wall bracket, swivels through 180°
- Latching of hose at any length
- Latching system can be set to free run if required
- Working pressure up to 300 psi (20 bar)



COMPACT SPRING
REWIND AIR REEL

4000

PART NUMBER	HOSE ID	LENGTH	INLET/OUTLET	PRICE
hC2752	3/8"	15 m	3/8"	£162.99
hC2753	1/2"	15 m	1/2"	£174.58

POLYMER HIGH VISIBILITY HOSE

FEATURES AND BENEFITS

- Automatic guide system - no bunching of hose, layers hose from side to side, neat and tidy every time
- Slow retraction system - prevents hose from speeding back to the reel if the hose is let go - safe operation
- Low tension spring
- Latching of hose at any length



New

HIGH VISIBILITY SAFETY REELS

4000

PART NUMBER	HOSE CAPACITY	HOSE ID	MAX. WORKING PRESSURE	PRICE
hC2782	15 m	3/8"	20 bar	£138.00
hC2783	15 m	1/2"	20 bar	£177.60

POLYPROPYLENE GARDEN HOSE

FEATURES AND BENEFITS

- Lightweight and durable, just 10.6 kg
- Constructed in high impact UV stabilised polypropylene
- Supplied and fitted with PVC hose for immediate and trouble free installation
- Fully assembled, includes 36"/0.9m connecting hose
- Complete with water gun & convenient handle for portable use
- Fitted with speed, control to help automatic hose rewinding constant & at a safe speed keeping it under control at all times
- Hose layering system ensures neat & trouble free storage of hose
- Spring fully enclosed & lubricated
- Integral wall/overhead pivoting bracket
- Non-slag rollers reduce hose wear



New

GARDEN HOSE REEL
20 M

4000

PART NUMBER	HOSE CAPACITY	HOSE ID	MAX. WORKING PRESSURE	PRICE
hC2766	20 m	1/2"	10 bar	£176.40

COXREEL SERIES

HEAVY DUTY SPRING REWIND REELS

FEATURES / BENEFITS

- Heavy duty, steel construction with durable, blue powder finish
- Double supported, solid 1" steel axle
- Multi-position roller arm gives full range of mounting options
- Four direction, non-sag roller guides reduce hose wear
- 1/4" steel mounting base for maximum stability
- Slotted and drilled mounting holes for easy installation



BARE REEL WITHOUT HOSE



4000

PART NUMBER	HOSE ID	HOSE OD	LENGTH	SWIVEL IN / OUT	PRICE
hPLPL350	3/8"	5/8"	15 m	3/8" BSPF	£541.93
hSHL3100	3/8"	5/8"	30 m	3/8" BSPF	£1147.75
hSHL450	1/2"	7/8"	15 m	1/2" BSPF	£685.62
hSHL4100	1/2"	7/8"	30 m	1/2" BSPF	£1087.96
hSHL550	3/4"	1 1/8"	15 m	3/4" BSPF	£1115.10
hSHL635	1"	1 7/16"	10.5 m	1" NPTF	£1239.85

Supplied without hose.



REEL WITH HOSE FOR AIR / WATER



4000

21 bar maximum pressure

PART NUMBER	HOSE ID	HOSE OD	LENGTH	SWIVEL IN / OUT	PRICE
hPLPL350AW	3/8"	5/8"	15 m	3/8" BSPF	£592.88
hSHL3100AW	3/8"	5/8"	30 m	3/8" BSPF	£1240.44
hSHL450AW	1/2"	7/8"	15 m	1/2" BSPF	£755.35
hSHL4100AW	1/2"	7/8"	30 m	1/2" BSPF	£1202.11
hSHL550AW	3/4"	1 1/8"	15 m	3/4" BSPF	£1245.43
hSHL635AW	1"	1 7/16"	10.5 m	1" NPTF	£1448.94

FOR DIESEL

21 bar maximum pressure

PART NUMBER	HOSE ID	HOSE OD	LENGTH	SWIVEL IN / OUT	PRICE
hSHL450D	1/2"	7/8"	15 m	1/2" BSPF	£859.40
hSHL4100D	1/2"	7/8"	30 m	1/2" BSPF	£1433.53
hSHL550D	3/4"	1 1/8"	15 m	3/4" BSPF	£1395.52
hSHL635D	1"	1 7/16"	10.5 m	1" NPTF	£1500.51

FOR FOOD INDUSTRY

21 bar maximum pressure

PART NUMBER	HOSE ID	HOSE OD	LENGTH	SWIVEL IN / OUT	PRICE
hSHL450F	1/2"	7/8"	15 m	1/2" BSPF	£963.67
hSHL4100F	1/2"	7/8"	30 m	1/2" BSPF	£1642.40
hSHL550F	3/4"	1 1/8"	15 m	3/4" BSPF	£1562.57

FOR PRESSURE WASH

21 bar maximum pressure

PART NUMBER	HOSE ID	HOSE OD	LENGTH	SWIVEL IN / OUT	PRICE
hMPL350P	3/8"	5/8"	15 m	3/8" BSPF	£988.80
hMPL3100P	3/8"	5/8"	30 m	3/8" BSPF	£1488.76

MANUAL REWIND STEEL REELS

FEATURES / BENEFITS

- Designed for industrial applications where longer lengths of hose are required
- Heavy gauge, powder coated, steel construction
- Ready for wall, floor or overhead installation
- Direct crank action, combined with twin bearings, requires minimum rewind effort
- Spring loaded locking pin prevents drum rotation when in use



BARE REEL WITHOUT HOSE



4000

PART NUMBER	HOSE ID	HOSE OD	LENGTH	SWIVEL IN / OUT	PRICE
h11254100	1/2"	7/8"	30 m	1/2" BSPF	£571.82
h11254200	1/2"	7/8"	60 m	1/2" BSPF	£585.55
h11255100	3/4"	1 1/4"	30 m	3/4" BSPF	£708.19

Supplied without hose.



REEL WITH HOSE FOR AIR / WATER



4000

PART NUMBER	HOSE ID	HOSE OD	LENGTH	SWIVEL IN / OUT	PRICE
h11254100AW	1/2"	7/8"	30 m	1/2" BSPF	£685.99
h11254200AW	1/2"	7/8"	60 m	1/2" BSPF	£830.53
h11255100AW	3/4"	1 1/4"	30 m	3/4" BSPF	£966.69



COXREEL SERIES

MANUAL REWIND WITHOUT HOSE

FEATURES / BENEFITS

- Designed for industrial applications where longer lengths of hose are required
- Heavy gauge, powder coated, steel construction
- Ready for wall, floor or overhead installation
- Direct crank action, combined with twin bearings, requires minimum rewind effort
- Spring loaded locking pin prevents drum rotation when in use



BARE REEL WITHOUT HOSE



4000

PART NUMBER	HOSE ID	HOSE OD	LENGTH	SWIVEL IN / OUT	PRICE
h11756100	1"	1 7/16"	30 m	1" NPTF	£1083.72

Supplied without hose.



REEL WITH HOSE FOR AIR / WATER



4000

21 bar maximum pressure

PART NUMBER	HOSE ID	HOSE OD	LENGTH	SWIVEL IN / OUT	PRICE
h11756100AW	1"	1 7/16"	30 m	1" NPTF	£1509.87

FOR DIESEL

21 bar maximum pressure

h11756100D	1"	1 7/16"	30 m	1" NPTF	£1708.36
------------	----	---------	------	---------	----------

Supplied without hose.

MANUAL SPRING REWIND WITHOUT HOSE

65 – 100 FT

FEATURES / BENEFITS

- Constructed from tubular & formed steel for superior strength & durability
- Corrosion resistant, powder coated finish, black as standard
- Full flow, brass swivel assembly ensures maximum flow
- Suitable for floor, wall, workbench mounting, ideal for mobile applications
- Spring loaded lock pin prevents hose from de-reeling



BARE REEL WITHOUT HOSE FOR LOW / MEDIUM PRESSURE AIR / WATER



4000

PART NUMBER	HOSE ID	LENGTH	MAX. PRESSURE	INLET / OUTLET	PRICE
hC2083100H	3/8"	30 m	207 bar	3/8"	£171.75
hC208465H	1/2"	20 m	207 bar	1/2"	£168.27

270 – 350 FT

FEATURES / BENEFITS

- Designed for applications where longer lengths of hose are required
- Constructed in heavy, gauge powder coated steel
- Full flow swivel joint
- Open hose slot drum design, Oil-lite self lubricating bearings
- Spring loaded lock pin prevents hose from de-reeling



BARE REEL WITHOUT HOSE FOR LOW / MEDIUM PRESSURE AIR / WATER



4000

PART NUMBER	HOSE ID	LENGTH	MAX. PRESSURE	INLET / OUTLET	PRICE
hC4603350H	3/8"	105 m	207 bar	3/8"	£240.11
hC4604270H	1/2"	80 m	207 bar	1/2"	£236.61

REELWORKS SERIES

50 FT

FEATURES / BENEFITS

- Corrosion resistant powder coating
- Guide arm, adjustable handling, up to 9 positions
- Multi-position ratchet lock



REEL WITHOUT HOSE SUITABLE FOR WELDING



4000

PART NUMBER	HOSE ID	LENGTH	MAX. PRESSURE	INLET / OUTLET	PRICE
hC808350W	3/8"	15 m	14 bar	3/8"	POA

Supplied without hose.



REEL WITH HOSE FOR LOW PRESSURE AIR / WATER



4000

Black reel with black hose

PART NUMBER	HOSE ID	LENGTH	MAX. PRESSURE	INLET / OUTLET	PRICE
hC808350L	3/8"	15 m	21 bar	3/8"	£336.53
hC808450L	1/2"	15 m	21 bar	1/2"	£447.61

FOR MEDIUM PRESSURE AIR / WATER

Black reel with black hose

hC808350M	3/8"	15 m	155 bar	3/8"	£457.23
-----------	------	------	---------	------	---------

Light grey reel with red hose

hC808450M	1/2"	15 m	138 bar	3/8"	£508.20
-----------	------	------	---------	------	---------

25 FT

FEATURES / BENEFITS

- Heavy duty steel construction with corrosion resistant powder coating
- Multi position ratchet lock
- Spring fully enclosed and lubricated
- 6 1/2" wide L-shaped base ensures stable support
- Guide arm adjustable for handling up to 9 positions
- Wall, ceiling or floor mounted



REEL WITH HOSE FOR LOW PRESSURE AIR / WATER



4000

PART NUMBER	HOSE ID	LENGTH	MAX. PRESSURE	INLET / OUTLET	PRICE
hC809325L	3/8"	8 m	21 bar	3/8"	£260.06

50 – 100 FT

FEATURES / BENEFITS

- Non-snap roller guides reduce hose wear
- Latching of hose at any length
- Corrosion resistant, powder coated finish, black as standard
- Full flow, internal swivel assembly ensures maximum flow
- Suitable for floor, wall, ceiling or vehicle mount
- Fully automatic hose rewind for neat and tidy storage



REEL WITH HOSE FOR LOW PRESSURE AIR / WATER



4000

PART NUMBER	HOSE ID	LENGTH	MAX. PRESSURE	INLET / OUTLET	PRICE
hC8804100L	1/2"	30 m	21 bar	1/2"	£746.16
hC880550L	3/4"	20 m	21 bar	3/4"	£806.47
hC880650L	1"	15 m	21 bar	1"	£827.04

STAINLESS STEEL

FEATURES AND BENEFITS

- Heavy duty stainless steel construction
- Double supported, solid 1" stainless steel axle
- Fully automatic hose rewind for neat and tidy storage
- Slotted and drilled mounting holes for easy installation
- Latching of hose at any length
- Non-snag roller guides reduce hose wear
- Externally mounted, full flow, stainless steel swivel assembly
- Supplied as a bare reel (hose supplied at an extra cost)



4000

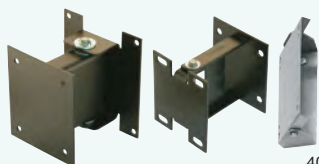
STAINLESS STEEL
SPRING REWIND HOSE REEL
SUPPLIED AS BARE REEL

PART NUMBER	HOSE CAPACITY	HOSE ID	MAX. WORKING PRESSURE	PRICE
hCSS808-350L	15 m	3/8"	20 bar	£724.80
hCSS808-450L	15 m	1/2"	20 bar	£724.80
hCSS808-465L	20 m	1/2"	20 bar	£793.70
hCSS808-350M	15 m	3/8"	200 bar	£777.31
hCSS808-450M	15 m	1/2"	200 bar	£777.31

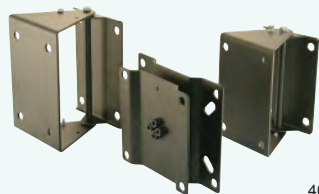
Supplied as bare reel,
please contact your distributor if you require a suitable hose.



SPRING REWIND REEL ACCESSORIES



4000



4000

MOUNTING BRACKET
180° SWIVEL

PART NUMBER	DESCRIPTION	PRICE
hT15720	Heavy duty steel. For use with P & SH Series	£117.01
hT15725	Heavy duty steel. For size index 4 SH & size index 3 MP Series	£227.84

MOUNTING BRACKET
PIVOTING

PART NUMBER	DESCRIPTION	PRICE
hCP/B2 140	Steel wall bracket. For use with 809 Series	£45.33
hCP/B3 340	Heavy duty steel base unit. For use with 808, 809 and 820 Series	£55.08
hCP/B4 140	Steel wall bracket. For use with 808 Series	£48.59



240 VOLT REEL

FEATURES

- Compact, lightweight design
- Supplied with 15 m of 3 core, 1.5 mm cable
- Fitted inlet cable for connection to supply
- Integral wall mounting swivel bracket
- Latching of cable at any length
- Fully automatic spring rewind
- Low effort, easy to use rewind tension
- Virtually maintenance free



REEL WITH CABLE
3 x 1.5 mm CORES



4000

PART NUMBER	CABLE LENGTH	VOLTAGE	AMPS IN / OUT	PRICE
hC605100	15 m	240 V	3 / 10	£125.03

240 VOLT POLYPROPYLENE REEL

FEATURES AND BENEFITS

- Lightweight and durable, just 11 kg
- Constructed in high impact UV stabilised polypropylene
- Supplied with 25 m x 3 core 1.5 mm cable
- 1.3 mm fitted inlet cable
- Supplied with fitted pivoting wall bracket
- Latching of cable at any length
- Fully automatic spring rewind action
- Fitted circuit breaker
- Supplied with fitted UK plug and sockets
- 12 month manufacturer's warranty (excluding cable)



POLYPROPYLENE SPRING REWIND CABLE REELS



4000

PART NUMBER	LENGTH	CORE	MAX VOLTAGE	PRICE
hC625-2500	25 m	3 x 1.5 mm	240 v	£193.96

230 VOLT REEL

FEATURES AND BENEFITS

- Slow retraction system - prevents hose from speeding back to the reel if the hose is let go - safe operation
- Lightweight and durable, from just 7 kgs
- Supplied with 15 m of 3 core, 1.5 mm 2 cable
- Integral wall mounting swivel bracket
- Latching of cable at any length
- Fitted circuit breaker
- Electricity indicator LED light
- 1.5 m fitted inlet cable
- Supplied with fitted UK plug and sockets
- For indoor use only
- 2 Year limited warranty



SAFETY CABLE REEL
230 V



4000

PART NUMBER	LENGTH	CORE	MAX VOLTAGE	PRICE
hC2681	15 m	3 x 1.5 mm	230 v	£187.20

240 VOLT REELS

FEATURES AND BENEFITS

- Constructed in high impact UV stabilised polypropylene
- Lightweight design, just 1.8 kg – 2.0 kg
- Supplied with fitted H05VV-F cable
- Powder coated, integral wall/ceiling bracket
- Latching of cable at any length, or a free run option
- Manually restorable circuit breaker
- Fully automatic spring rewind
- Low effort, easy to use rewind tension
- Virtually maintenance free
- Supplied with 1.3 m inlet cable, 3 pin UK plug and socket



SPRING REWIND CABLE REEL

5 M

4000

PART NUMBER	LENGTH	CORE	MAX VOLTAGE	PRICE
hYRC25	5 m	3 x 1.5 mm	240 v	£168.58

FEATURES AND BENEFITS

- Constructed in high impact UV stabilised polypropylene
- Lightweight design, just 3.5 kg – 3.8 kg
- Supplied with fitted H05VV-F cable
- Powder coated, integral wall/ceiling bracket
- Latching of cable at any length, or a free run option
- Manually restorable circuit breaker
- Fully automatic spring rewind
- Low effort, easy to use rewind tension
- Virtually maintenance free
- Supplied with 1.3 m inlet cable, 3 pin UK plug and socket



SPRING REWIND CABLE REEL

10 M

4000

PART NUMBER	LENGTH	CORE	MAX VOLTAGE	PRICE
hYRC100	10 m	3 x 1.5 mm	240 v	£220.55

COMPACT

FEATURES AND BENEFITS

- Constructed in high impact UV stabilised polypropylene
- Lightweight design, just 8.2 kg and 12.0 kg
- Powder coated, integral wall/ceiling bracket
- Latching of cable at any length or a free run option
- Manually restorable circuit breaker
- Fully automatic spring rewind
- Low effort, easy to use rewind tension
- Virtually maintenance free
- Supplied with 1.3 m inlet cable, 3 pin UK plug and socket



COMPACT SPRING REWIND CABLE REEL

4000

PART NUMBER	LENGTH	CORE	MAX VOLTAGE	PRICE
hYRC2500	20 m	3 x 1.5 mm	240 v	£436.72
hYRC3500	35 m	3 x 1.5 mm	240 v	£551.62

KOREEL CABLE REELS

FEATURES AND BENEFITS

- Constructed in ABS plastic
- Latching of cable at any length
- Fully automatic spring rewind
- Low effort, easy to use rewind tension
- Supplied with fitted cable
- Virtually maintenance free
- Integral wall mounting swivel bracket



CABLE / CORD REEL ABS PLASTIC

4000

PART NUMBER	LENGTH	CORE	MAX VOLTAGE	PRICE
hCPER-120	20 m	3 x 1.5 mm	240 v	£255.55

SPRING REWIND CABLE REELS

FEATURES AND BENEFITS

- Impact resistant polypropylene construction
- Latching of cable at any length
- Fully automatic spring rewind
- Low effort, easy to use, rewind tension
- Supplied with fitted cable plus standard 16A plug & socket
- Virtually maintenance free
- Wall mounted swivel bracket
- IP42 Rated
- Max amperage Cable in 8 amp / Cable out 16 amp



PART NUMBER	LENGTH	CORE	MAX VOLTAGE	PRICE
hYZ7325	15 m	3 x 2.5 mm	110 v	£378.72

FEATURES AND BENEFITS

- Aluminium construction
- Latching of cable at any length
- Fully automatic spring rewind
- Low effort, easy to use, rewind tension
- Supplied with fitted cable plus standard 16A plug & socket
- Virtually maintenance free
- Wall mounted swivel bracket
- IP65 Rated
- Max amperage Cable in 8 amp / Cable out 16 amp



PART NUMBER	LENGTH	CORE	MAX VOLTAGE	PRICE
hYZ6185/IP65	15 m	3 x 2.5 mm	110 v	£714.29

CABLE / CORD REELS

FEATURES AND BENEFITS

- Heavy duty, powder coated, steel construction provides a high quality chip resistant surface
- Auto rewind easily wraps, stores and protects the cable
- Multi position latching assembly secures cable at any length
- Overloading protect function with circuit breaker built into rear housing
- Guide arm adjusts to wall, floor and overhead payout directions
- 4 Roller non-sag cable guide
- 2 m Lead-in cable included
- CE approved



PART NUMBER	LENGTH	CORE	MAX VOLTAGE	PRICE
hC6888-380V-50	15 m	5 x 2.5 mm	380 v	£586.49

WARNING TAPE BARRIER REELS

FEATURES AND BENEFITS

- Constructed in high impact UV stabilised polypropylene
- Ideal for preventing people entering an unsafe or restricted area
- The tape is manufactured from a strong durable woven textile
- Can also be equipped with the new patented slow motion system to give controlled rewinding of the tape



PART NUMBER	LENGTH	TAPE COLOUR	PRICE
hYRT811700	15 m	Red / White	£209.23

FEATURES AND BENEFITS

- Constructed in high impact UV stabilised polypropylene
- Ideal for preventing people entering an unsafe or restricted area
- The tape is manufactured from a strong durable woven textile
- Can also be equipped with the new patented slow motion system to give controlled rewinding of the tape



PART NUMBER	LENGTH	TAPE COLOUR	PRICE
hYRT811720	15 m	Yellow / Black	£209.23

HOSE STORAGE

INCLUDES

1 x Freestanding hose reel, 25 m of 12.5 mm hose, 1 x nozzle, 2 x hose connectors, 1 x waterstop, 1 x 3/4" / 1/2" tap connector.



**30 M HOSE REEL WITH 25 M HOSE
FREESTANDING**

1366

PART NUMBER	DESCRIPTION	PRICE
HZ2412	Freestanding hose reel	£66.09

HOSE STORAGE PRO

INCLUDES

Wheeled hose reel, 30 m of 12.5 mm Maxi Plus hose, 1 x nozzle, 2 x hose connectors, 1 x waterstop, 1 x 1" / 3/4" / 1/2" tap connector.



**60 M ASSEMBLED
PLASTIC HOSE CART
WITH 30 M HOSE**

1366

PART NUMBER	DESCRIPTION	PRICE
HZ2434	Wheeled hose reel	£89.82

INCLUDES

Enclosed freestanding or wall mounted hose reel with hose layering, 25 m of 12.5 mm Maxi Plus hose, 1 x nozzle, 2 x hose connectors, 1 x waterstop, 1 x 3/4" / 1/2" tap connector, wall fixings.



**COMPACT MANUAL REEL
WITH 25 M HOSE**

1366

PART NUMBER	DESCRIPTION	PRICE
HZ2415	Enclosed hose reel	£80.42

HOSE STORAGE PLUS

INCLUDES

Wheeled hose reel, 2 x PLUS hose end connectors.



**60 M ASSEMBLED
METAL HOSE CART
WITHOUT HOSE**

1366

PART NUMBER	DESCRIPTION	PRICE
HZ2437	Wheeled hose reel	£74.07

INCLUDES

Wall mounted hose reel with geared, easy rewind and automatic hose layering, 40 m of 12.5 mm Maxi Pro hose and 2 m feeder hose. 1 x nozzle, 2 x hose connectors, 1 x waterstop, 1 x 3/4" / 1/2" tap connector. With wall fixings and corner hose guide.



**WALL MOUNTED FAST REEL
WITH 40 M HOSE**

1366

PART NUMBER	INCLUDES	PRICE
HZ2496	Wall mounted hose reel, geared, easy rewind	£141.70

HOSE – WATERING RANGE

SUITABILITY	FEATURES / BENEFITS
<ul style="list-style-type: none"> • General purpose garden use 	<ul style="list-style-type: none"> • 10 year guarantee • Hard wearing

SPECIFICATIONS	
Construction	Four layer design: a smooth PVC inner layer to allow maximum flow, a thick PVC layer to add strength, a braided polyester layer to stop expansion of the hose and a tough PVC outer layer.

MAXI PLUS STARTER SET CONTAINS	
1 x 30 m Maxi Plus general purpose braided hose	
1 x 3/4" and 1/2" Tap connector to attach to an outside tap	
1 x Hose end connector to attach the hose to the tap	
1 x Aquastop connector to connect the end of the hose to the nozzle	
1 x Spray nozzle	



MAXI PLUS STARTER SET
12.5 mm DIA

1366

MAXI PLUS
YELLOW WITH GREY STRIPE
30 metre coils

1366

PART NUMBER	DESCRIPTION	PRICE
HOZ-72309000	Hose and fitting starter set	£48.06

PART NUMBER	mm	ins	ins	PRICE
HOZ-7230	12.5	1/2	3/4	£35.46

HOSE END CONNECTORS



HOSE NOZZLE

1366

PART NUMBER	DESCRIPTION	PRICE
HZ2292	Adjustable from jet to fine spray	£9.85



MULTI SPRAY GUN
LOCKABLE ON / OFF TRIGGER

1366

PART NUMBER	DESCRIPTION	PRICE
HZ2676	5 Spray patterns: jet, cone, fast fill, flat spray and fine rose	£17.91



HOSE FITTINGS

OUTDOOR TAP CONNECTOR

1" BSP



1366

PART NUMBER	DESCRIPTION	PRICE
HZ2158	For outdoor threaded taps	£6.29

OUTDOOR TAP CONNECTOR

3/4" BSP / 1/2" BSP



1366

PART NUMBER	DESCRIPTION	PRICE
HZ2175	For outdoor threaded taps	£6.60

Y CONNECTOR



1366

PART NUMBER	DESCRIPTION	PRICE
HZ2293	Allows three hoses to be joined using 3 hose connectors	£6.40

HOSE REPAIR CONNECTOR

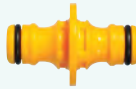
12.5 mm



1366

PART NUMBER	DESCRIPTION	PRICE
HZ2100	For repairing damaged hose	£5.75

DOUBLE MALE CONNECTOR



1366

PART NUMBER	DESCRIPTION	PRICE
HZ2291	Allows two hoses to be joined using 2 hose connectors	£5.51

HOSE FITTINGS – PLUS

HOSE END CONNECTOR

12.5 mm & 15 mm



1366

PART NUMBER	DESCRIPTION	PRICE
HZ2050	Soft touch filling Flexible tail prevents kinking	£8.11

AQUASTOP CONNECTOR

12.5 mm & 15 mm



1366

PART NUMBER	DESCRIPTION	PRICE
HZ2055	Valve shuts off water when accessory is disconnected	£9.31

METAL HOSE FITTINGS – PRO

OUTDOOR TAP CONNECTOR

3/4" BSP / 1/2" BSP



1366

PART NUMBER	DESCRIPTION	PRICE
HZ2041	For outdoor threaded taps	£8.55

OUTDOOR TAP CONNECTOR

1" BSP



1366

PART NUMBER	DESCRIPTION	PRICE
HZ2042	For outdoor threaded taps	£10.82

DOUBLE MALE CONNECTOR



1366

PART NUMBER	DESCRIPTION	PRICE
HZ2044	Allows two hoses to be joined	£8.55

HOSE REPAIR CONNECTOR

12.5 MM



1366

PART NUMBER	DESCRIPTION	PRICE
HZ2043	For repairing damaged hose	£9.75

HOSE END CONNECTOR

12.5 MM & 15 MM



1366

PART NUMBER	DESCRIPTION	PRICE
HZ2030	Soft touch fitting Flexible tail prevents kinking	£9.41

AQUASTOP CONNECTOR

12.5 MM & 15 MM



1366

PART NUMBER	DESCRIPTION	PRICE
HZ2035	Valve shuts off water when accessory is disconnected	£10.50

SPRAYERS PLUS

DESCRIPTION

- Small, heavy duty pressure sprayer
- Lockable on/off flow control for continuous spraying
- Nozzle adjustment from fine jet to mist
- 3 Years guarantee



1.25 LITRE SPRAYER

1366

PART NUMBER	CAPACITY	PRICE
HZ4122P	1.25 litres	£23.07

DESCRIPTION

- Specifically designed for spraying larger areas
- Contoured container, shaped to comfortably fit the operator's back
- Covers up to 480 m²
- 3 Years guarantee



16 LITRE SPRAYER

1366

PART NUMBER	CAPACITY	PRICE
HZ4716	16 litres	£124.10

DESCRIPTION

- Lockable on/off flow control for continuous spraying
- Wide ergonomic pump handle for easy filling and emptying
- Covers up to 210 m²
- 3 Years guarantee



7 LITRE SPRAYER

1366

PART NUMBER	CAPACITY	PRICE
HZ4507	7 litres	£51.56

SPRAYERS PRO

DESCRIPTION

- Small, heavy duty pressure sprayer for the application of aggressive chemicals
- Equipped with Viton fluoroelastomer seals
- 2 Years guarantee



VITON®

1.25 LITRE SPRAYER

PART NUMBER	CAPACITY	PRICE
HZ5102	1.25 litres	£68.25

DESCRIPTION

- Lockable on/off flow control for continuous spraying
- Equipped with Viton fluoroelastomer seals
- Covers up to 210 m²
- 2 Years guarantee



1366

VITON®

7 LITRE SPRAYER

1366

PART NUMBER	CAPACITY	PRICE
HZ5107	7 litres	£75.84