

## CLIPS AND CLAMPS

New Additions



910

OETIKER  
1 & 2 Ear Clips



916

MIKALOR  
Spring Clips,  
Wire Clips  
& Accessories



910

OETIKER  
Repair Kits



917

MIKALOR  
P Clips



911

OETIKER  
167 Series  
Stepless®  
Ear Clamps



918

MIKALOR  
Mild Steel Worm  
Drive Clips

New



912

OETIKER  
PG180  
Mini Clamps



918

UNEX  
Hose Clips

New



912

OETIKER  
PG174 Universal  
Banding & Locks



919

MIKALOR  
Stainless Steel  
Worm Drive Clips  
& Accessories



912

OETIKER  
Twin Clamps



920

MIKALOR  
Mild Steel Hose  
Clips & Clamps

New



913

OETIKER  
Clamp kits



920

MIKALOR  
Repair Kits

New Additions



914

OETIKER  
Hand Installation  
Pincers & Hand  
Clamp Cutters



921

MIKALOR  
Stainless Steel  
Hose Clamps



915

MIKALOR  
'O' Clips for Low  
Pressure

New Additions



922

BAND-IT  
Bands, Buckles  
& Tools



916

MIKALOR  
Pincers for Low  
Pressure 'O' Clips



923

BAND-IT  
Junior® Smooth  
ID Clamps & Tools

SEVENTEEN

## CLIPS AND CLAMPS



924

JUBILEE  
Worm Drive  
Hose Clips



928

JCS  
Hi-Torque Hose  
Clamps



925

JUBILEE  
Multiband



928

JCS  
Accessories



925

JUBILEE  
Quick Release  
Straps



929

PARKAIR  
Toggle Clamps

New



925

JUBILEE  
Flexiband



932

NORMA GROUP  
Cobra Clips &  
Accessories



926

JUBILEE  
Super Clamps



932

NORMA GROUP  
Breeze Hi-Torque  
Clamps



926

JUBILEE  
Drivers



932

NORMA GROUP  
Pipe Retaining  
Clips



927

JUBILEE  
High Torque  
Clamps



932

NORMA GROUP  
Acetal Clips



927

JUBILEE  
Wingspade Clips



933

PARKAIR  
Brass Rings,  
Brackets  
& Accessories



928

JCS  
Hi-Grip  
Worm Drive  
Hose Clips

New  
Additions



934

NVENT CADDY  
Pipe Clips



928

JCS  
Hi-Grip  
Wing Screw  
Hose Clips

New  
Additions



935

NVENT CADDY  
Speed Link

SEVENTEEN

## 1 EAR CLIPS

### 1 EAR CLIP FEATURES

- Fitted with stainless steel insert ring
- Insert ring completely protects the hose from damage

### SPECIFICATIONS

Materials | Stainless steel 1.4301 / UNS S30400



4145

## 1 EAR CLIPS

PART NUMBER	CLAMPING RANGE	BAND WIDTH	PRICE
OET03.3RER	2.5 – 2.9 mm	5.5 mm	£1.35
OET03.5RER	2.7 – 3.1 mm	5.5 mm	£1.37
OET04.1RER	2.9 – 3.7 mm	5.5 mm	£1.39
OET04.6RER	3.4 – 4.2 mm	5.5 mm	£1.42
OET05.1RER	3.7 – 4.7 mm	5.5 mm	£1.27
OET05.6RER	4.2 – 5.2 mm	5.5 mm	£1.27
OET06.1RER	4.7 – 5.7 mm	5.5 mm	£0.93
OET06.6RER	5.2 – 6.2 mm	5.5 mm	£0.69
OET07.0RER	5.6 – 6.5 mm	6.4 mm	£0.64
OET07.5RER	5.9 – 7.0 mm	6.4 mm	£0.67
OET08.0RER	6.3 – 7.5 mm	6.4 mm	£0.68
OET08.3RER	6.6 – 7.8 mm	6.4 mm	£0.69
OET08.7RER	7.0 – 8.2 mm	6.4 mm	£0.70
OET09.0RER	7.0 – 8.5 mm	7.4 mm	£0.70
OET09.5RER	7.5 – 9.0 mm	7.4 mm	£0.71
OET10.0RER	8.0 – 9.5 mm	7.4 mm	£0.91
OET10.5RER	8.5 – 10.0 mm	7.4 mm	£0.75
OET11.0RER	8.8 – 10.5 mm	7.4 mm	£0.76
OET11.3RER	9.1 – 10.8 mm	7.4 mm	£0.78
OET11.8RER	9.6 – 11.3 mm	7.4 mm	£0.79
OET12.0RER	9.5 – 11.5 mm	7.4 mm	£0.81
OET12.3RER	9.8 – 11.8 mm	7.4 mm	£0.82
OET12.8RER	10.3 – 12.3 mm	7.4 mm	£0.83
OET13.3RER	10.6 – 12.6 mm	8.2 mm	£0.84
OET13.8RER	11.1 – 13.1 mm	8.2 mm	£0.86
OET14.0RER	11.3 – 13.3 mm	8.2 mm	£0.87
OET14.5RER	11.8 – 13.8 mm	8.2 mm	£0.88
OET15.0RER	12.3 – 14.3 mm	8.2 mm	£0.89
OET15.5RER	12.8 – 14.8 mm	8.2 mm	£0.91
OET16.0RER	13.1 – 15.3 mm	8.2 mm	£0.91
OET16.5RER	13.2 – 15.8 mm	8.2 mm	£0.93
OET16.8RER	13.9 – 16.1 mm	8.2 mm	£0.93
OET17.5RER	14.6 – 16.8 mm	8.2 mm	£0.94
OET18.5RER	15.6 – 17.8 mm	8.2 mm	£0.96
OET19.5RER	16.5 – 18.8 mm	8.2 mm	£0.97
OET20.0RER	17.1 – 19.3 mm	9.2 mm	£0.99
OET20.7RER	17.1 – 20.0 mm	9.2 mm	£1.02
OET21.0RER	18.0 – 20.3 mm	9.2 mm	£1.07
OET21.8RER	18.8 – 21.1 mm	9.2 mm	£1.08
OET22.5RER	19.2 – 21.8 mm	9.2 mm	£1.12
OET23.5RER	20.2 – 22.8 mm	9.2 mm	£1.19
OET24.5RER	21.0 – 23.8 mm	9.2 mm	£1.26
OET25.5RER	22.0 – 24.8 mm	9.2 mm	£1.36
OET26.3RER	23.0 – 25.6 mm	9.2 mm	£1.37
OET27.0RER	23.3 – 26.3 mm	9.2 mm	£1.38
OET30.7RER	26.5 – 30.0 mm	9.2 mm	£1.40

## 2 EAR CLIPS

### 2 EAR CLIP FEATURES

- Low cost
- For low to medium pressure and metal to metal connections

### SPECIFICATIONS

Material | Zinc plated steel



4145

## 2 EAR CLIPS

PART NUMBER	CLAMPING RANGE	BAND WIDTH	PRICE
OET-0305	3.0 – 5.0 mm	5.0 mm	£0.38
OET-0507	5.0 – 7.0 mm	6.0 mm	£0.39
OET-0709	7.0 – 9.0 mm	7.0 mm	£0.42
OET-0811	8.0 – 11.0 mm	7.0 mm	£0.45
OET-1113	11.0 – 13.0 mm	7.0 mm	£0.47
OET-1315	13.0 – 15.0 mm	7.5 mm	£0.50
OET-1517	15.0 – 17.0 mm	8.0 mm	£0.53
OET-1518	15.0 – 18.0 mm	8.0 mm	£0.54
OET-1720	17.0 – 20.0 mm	8.5 mm	£0.57
OET-1922	19.0 – 22.0 mm	9.0 mm	£0.80
OET-2023	20.0 – 23.0 mm	9.0 mm	£0.81
OET-2225	22.0 – 25.0 mm	10.0 mm	£0.87
OET-2327	23.0 – 27.0 mm	10.0 mm	£0.93
OET-2528	25.0 – 28.0 mm	10.0 mm	£0.95
OET-3134	31.0 – 34.0 mm	10.0 mm	£1.14
OET-3437	34.0 – 37.0 mm	10.0 mm	£1.14
OET-3740	37.0 – 40.0 mm	10.0 mm	£1.28

## 2 EAR CLIPS – STAINLESS STEEL

### 2 EAR CLIP FEATURES

- Low cost
- For low to medium pressure and metal to metal connections

### SPECIFICATIONS

Material | Stainless steel



4145

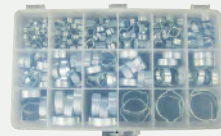
## 2 EAR CLIPS

PART NUMBER	CLAMPING RANGE	BAND WIDTH	PRICE
OET15100002SS	3.4 – 5.0 mm	5.0 x 0.5 mm	£0.60
OET15100003SS	5.0 – 7.0 mm	6.0 x 0.5 mm	£0.64
OET15100004SS	7.0 – 9.0 mm	7.0 x 0.8 mm	£0.67
OET15100023SS	8.0 – 11.0 mm	7.0 x 0.8 mm	£0.69
OET15100006SS	11.0 – 13.0 mm	7.0 x 0.8 mm	£0.72
OET15100007SS	12.5 – 15.0 mm	7.5 x 0.8 mm	£0.74
OET15100008SS	14.0 – 17.0 mm	8.0 x 0.8 mm	£0.91
OET15100009SS	15.0 – 18.0 mm	8.0 x 0.8 mm	£0.91
OET15100010SS	16.2 – 20.0 mm	8.5 x 1.0 mm	£1.06
OET15100011SS	18.1 – 22.0 mm	9.0 x 1.0 mm	£1.28
OET15100012SS	19.1 – 23.0 mm	9.0 x 1.0 mm	£1.40
OET15100013SS	21.1 – 25.0 mm	10.0 x 1.0 mm	£1.52
OET15100014SS	22.5 – 27.0 mm	10.0 x 1.0 mm	£1.62
OET15100015SS	24.0 – 28.0 mm	10.0 x 1.0 mm	£1.76
OET15100016SS	26.3 – 31.0 mm	10.0 x 1.0 mm	£1.91
OET15100018SS	29.3 – 34.0 mm	10.0 x 1.0 mm	£1.86
OET15100019SS	32.0 – 37.0 mm	10.0 x 1.0 mm	£2.25
OET15100020SS	35.0 – 40.0 mm	10.0 x 1.0 mm	£2.39

## REPAIR KITS

### OETIKER REPAIR KIT CONTENTS

30 x OET-0305	15 x OET-1315	4 x OET-2225
30 x OET-0507	10 x OET-1517	4 x OET-2327
20 x OET-0709	10 x OET-1518	4 x OET-2528
20 x OET-0811	8 x OET-1720	2 x OET-2831
20 x OET-0911	6 x OET-1922	2 x OET-3134
20 x OET-1113	6 x OET-2023	2 x OET-3437



### OETIKER REPAIR KIT

4195

PART NUMBER	DESCRIPTION	PRICE
KIT-OET	140 Assorted ear clips	£100.61

## STEPLESS® EAR CLAMPS

### ASSEMBLY RECOMMENDATIONS

The clamp "ear" is deformed with a constant tool jaw force – this practice is referred to as "force priority closure". This assembly method ensures that a uniform and repeatable stress is applied to the joint in addition to a consistent tensile force on the clamp interlock. Employing this methodology, when closing a 167 series clamp, will compensate for any component tolerance variations, and ensure that the clamp applies a constant radial force to the application. Fluctuations in component tolerances are absorbed by variations in the "ear" gap(s). Clamp installation monitoring and process data collection are available by incorporating an "Electronically Controlled Pneumatic Power Tool" Oetiker ELK in the assembly process.

### IMPORTANT

- The ear height is naturally given. Do not influence the ear height, either by changing the ear gap or with built-in hold-down devices in installation tools.
- Single tool stroke closure only, do not apply secondary crimping force.



4145

### STEPLESS® EAR CLAMPS 167 SERIES

5 MM BAND WIDTH, 0.5 MM THICKNESS

PART NUMBER	SIZE RANGE	EAR WIDTH INSIDE	PRICE
OET16702488	5.3 – 6.5 mm	4.0 mm	£0.74
OET16700001	5.8 – 7.0 mm	4.0 mm	£0.74
OET16700002	6.8 – 8.0 mm	4.0 mm	£0.75
OET16700003	7.0 – 8.7 mm	5.5 mm	£0.75
OET16702491	7.3 – 9.0 mm	5.5 mm	£0.75
OET16700004	7.8 – 9.5 mm	5.5 mm	£0.75
OET16700005	8.3 – 10.0 mm	5.5 mm	£0.75
OET16700006	8.8 – 10.5 mm	5.5 mm	£0.76
OET16702492	9.2 – 10.9 mm	5.5 mm	£0.76
OET16700007	9.6 – 11.3 mm	5.5 mm	£0.76
OET16700008	10.1 – 11.8 mm	5.5 mm	£0.77

### FEATURES

- Corrosion resistance according to DIN EN ISO 9227
- Narrow band: concentrates transmission of clamping force, less weight
- Stepless over 360°: uniform compression or uniform surface pressure
- Clamp ear: compensates for component tolerances, adjustable surface pressure
- Dimple: increases clamping force, spring-effect compensates for changes in diameter due to thermal expansion
- Burr-free strip edges: reduced risk of damage to parts being clamped

### SPECIFICATIONS

Material	Stainless steel 1.4301 / UNS S30400
----------	-------------------------------------



4145

### STEPLESS® EAR CLAMPS 167 SERIES

7 MM BAND WIDTH, 0.6 MM THICKNESS

PART NUMBER	SIZE RANGE	EAR WIDTH INSIDE	PRICE
OET16702951	9.4 – 11.9 mm	8 mm	£0.66
OET16700009	9.8 – 12.3 mm	8 mm	£0.66
OET16702493	10.3 – 12.8 mm	8 mm	£0.66
OET16700010	10.8 – 13.3 mm	8 mm	£0.67
OET16700011	11.3 – 13.8 mm	8 mm	£0.67
OET16700012	11.5 – 14.0 mm	8 mm	£0.67
OET16702864	11.7 – 14.2 mm	8 mm	£0.68
OET16700013	12.0 – 14.5 mm	8 mm	£0.68
OET16700014	12.3 – 14.8 mm	8 mm	£0.68
OET16700015	12.8 – 15.3 mm	8 mm	£0.69
OET16700016	13.2 – 15.7 mm	8 mm	£0.69
OET16702998	13.5 – 16.0 mm	8 mm	£0.69
OET16702494	13.7 – 16.2 mm	8 mm	£0.69
OET16702495	14.1 – 16.6 mm	8 mm	£0.69
OET16702496	14.3 – 16.8 mm	8 mm	£0.69
OET16700017	14.5 – 17.0 mm	8 mm	£0.70
OET16702497	15.0 – 17.5 mm	8 mm	£0.70
OET16700018	14.6 – 17.8 mm	10 mm	£0.70
OET16700019	14.8 – 18.0 mm	10 mm	£0.70
OET16700020	15.3 – 18.5 mm	10 mm	£0.71
OET16700110	16.0 – 19.2 mm	10 mm	£0.72
OET16702498	16.6 – 19.8 mm	10 mm	£0.72
OET16700024	17.8 – 21.0 mm	10 mm	£0.72
OET16700026	19.4 – 22.6 mm	10 mm	£0.74
OET16700028	20.3 – 23.5 mm	10 mm	£0.74
OET16700029	20.9 – 24.1 mm	10 mm	£0.75
OET16700031	22.4 – 25.6 mm	10 mm	£0.76
OET16700033	23.9 – 27.1 mm	10 mm	£0.77
OET16700035	25.4 – 28.6 mm	10 mm	£0.77
OET16702047	26.9 – 30.1 mm	10 mm	£0.78
OET16700039	27.6 – 30.8 mm	10 mm	£0.81
OET16700040	28.4 – 31.6 mm	10 mm	£0.82
OET16700042	29.9 – 33.1 mm	10 mm	£0.83
OET16700044	31.4 – 34.6 mm	10 mm	£0.85
OET16700046	32.9 – 36.1 mm	10 mm	£0.86
OET16700048	34.4 – 37.6 mm	10 mm	£0.87
OET16700050	34.9 – 38.1 mm	10 mm	£0.89
OET16700052	36.4 – 39.6 mm	10 mm	£0.90
OET16700053	37.8 – 41.0 mm	10 mm	£0.92
OET16700054	39.3 – 42.5 mm	10 mm	£0.94
OET16700055	40.8 – 44.0 mm	10 mm	£0.95
OET16700056	42.3 – 45.5 mm	10 mm	£0.98
OET16700057	43.8 – 47.0 mm	10 mm	£1.00
OET16700058	45.3 – 48.5 mm	10 mm	£1.01
OET16700059	46.8 – 50.0 mm	10 mm	£1.04

### Oetiker Assembly Solutions:

*Electro Pneumatic System, Pneumatic Pincer, Cordless Pincer*



Available on request

Please contact your distributor for further information

## PG180 MINI CLAMPS – R TYPE

### PG180 CLAMP FEATURES

- Compact design: Minimal space requirement, miniature sizes
- Cylindrical screw head: fast, simple and safe installation
- Embossed band strip: reduced risk of damage to the part being clamped

### SPECIFICATIONS

Band material	Rust-resistant chromium steel
Screw & housing material	Steel, zinc-plated, blue chromate finish



4145

### PG180 CLAMPS ZINC PLATED STEEL

PART NUMBER	TYPE	CLAMPING RANGE	PRICE
OET18000000	MINI R 1	6.0 – 11.0 mm	£0.71
OET18000001	MINI R 1.5	7.0 – 15.0 mm	£0.72
OET18000002	MINI R 2	11.0 – 19.0 mm	£0.74
OET18000248	MINI R 1 GZ*	6.0 – 11.0 mm	£0.90
OET18000249	MINI R 2 GZ*	9.0 – 19.0 mm	£0.92

\*GZ = rolled with cylindrical screw head

## PG180 MINI CLAMPS – R+S TYPE

### PG180 CLAMP FEATURES

- Compact design: Minimal space requirement, miniature sizes
- Cylindrical screw head: fast, simple and safe installation
- Embossed band strip: reduced risk of damage to the part being clamped

### SPECIFICATIONS

Material	Stainless steel
----------	-----------------



4145

### PG180 CLAMPS STAINLESS STEEL

PART NUMBER	TYPE	CLAMPING RANGE	PRICE
OET18000003	MINI R+S 1	7.0 – 11.0 mm	£2.61
OET18000004	MINI R+S 2	11.0 – 19.0 mm	£2.80
OET18000005	MINI R+S 3	18.0 – 29.0 mm	£2.99
OET18000006	MINI R+S 4	28.0 – 39.0 mm	£3.20
OET18000007	MINI R+S 5	38.0 – 49.0 mm	£3.46
OET18000008	MINI R+S 6	48.0 – 59.0 mm	£3.63
OET18000009	MINI R+S 7	58.0 – 69.0 mm	£3.78
OET18000010	MINI R+S 8	68.0 – 79.0 mm	£4.01
OET18000011	MINI R+S 9	78.0 – 89.0 mm	£4.25
OET18000012	MINI R+S 10	88.0 – 99.0 mm	£4.49
OET18000013	MINI R+S 11	98.0 – 109.0 mm	£4.74

## PG174 UNIVERSAL BANDING & LOCKS

### UNIVERSAL BANDING & LOCK FEATURES

- Perforated band: universally applicable for various diameters and widths
- Ratchet lock: installation and removal without tools
- Screw lock: simple installation, high holding force

### SPECIFICATIONS

Material	Stainless steel
----------	-----------------

### BANDING



4145

### PG174 UNIVERSAL CLAMP BAND STAINLESS STEEL

PART NUMBER	CLAMPING RANGE	BAND WIDTH	ROLL SIZE	PRICE
OET17400067	0.50 mm	10.0 mm	10 m	£70.56
OET17400081	0.50 mm	10.0 mm	20 m	£141.60
OET17400077	0.80 mm	18.0 mm	10 m	£120.80
OET17400079	0.80 mm	18.0 mm	20 m	£240.40
OET17400101	0.70 mm	30.0 mm	10 m	£178.80
OET17401421	0.70 mm	30.0 mm	20 m	£356.40

## LOCKS



4145

### PG174 SCREW LOCK STAINLESS STEEL

PART NUMBER	CLAMPING RANGE	BAND WIDTH	PRICE
OET17400003	40 – 100 mm	10 mm	£8.90
OET17400002	100 mm +	10 mm	£9.46
OET17400005	10 – 150 mm	18 mm	£46.92
OET17400004	150 mm +	18 mm	£46.92
OET17400006	80 – 150 mm	30 mm	£48.58



4145

### PG174 RATCHET LOCK STAINLESS STEEL

PART NUMBER	CLAMPING RANGE	BAND WIDTH	PRICE
OET17400063	35 – 60 mm	10 mm	£9.46
OET17400064	60 + mm	10 mm	£8.90

## TWIN CLAMPS

### TWIN CLAMP FEATURES

Single component clamp for holding hoses, cables, tubes and control cables parallel, formed from short sections of tube.

- Can be used for different diameters and spacings
- Radiused strip edges prevent damage to clamped parts
- Fast, simple and secure installation
- Robust execution

### SPECIFICATIONS

Materials	Zinc plated steel to DIN 1.0338 or SAE 1008/101
-----------	---



4145

### DOUBLE / TWIN CLAMPS CLOSED VERSION

PART NUMBER	SIZE RANGE	PRICE
OET10800000	4.0 – 5 mm	£1.11
OET10800001	5.6 – 7 mm	£1.14
OET10800002	7.4 – 9 mm	£1.16
OET10800003	9.2 – 11 mm	£1.21
OET10800004	10.7 – 13 mm	£1.24
OET10800005	12.7 – 15 mm	£1.41
OET10800006	13.6 – 17 mm	£1.39
OET10800007	15.7 – 19 mm	£1.45
OET10800008	18.6 – 21 mm	£1.46
OET10800009	20.1 – 23 mm	£1.52

## EXPERTAINER FOR DRIVESHAFT

### 124 PIECE EXPERTAINER DRIVESHAFT CONTENTS

20 x ø 24.5 mm	10 x ø 38.7 – 47.3 mm
20 x ø 25.9 – 27.6 mm	10 x ø 48.7 – 65.9 mm
20 x ø 29.0 – 30.7 mm	12 x ø 67.3 – 93.1 mm
25 x ø 32.1 – 37.3 mm	7 x ø 94.5 – 120.2 mm



4145

**New**

### 124 PIECE EXPERTAINER FOR DRIVESHAFT

PART NUMBER	DESCRIPTION	PRICE
OET18500268	DualHook Adjustable Ear Clamps 259	£308.70

## DRIVESHAFT REFILL BAGS



**New**

### DRIVESHAFT REFILL BAGS 10 PER BAG

4145

PART NUMBER	NOMINAL DIA.	BAG QTY	PRICE per bag
OET18500260	ø 24.5 – 21.0 mm	10	£17.22
OET18500261	ø 27.6 – 22.5mm	10	£17.22
OET18500262	ø 30.7 – 25.6mm	10	£17.22
OET18500263	ø 37.3 – 28.7mm	10	£18.06
OET18500264	ø 47.3 – 35.3mm	10	£19.95
OET18500265	ø 65.9 – 45.3mm	10	£21.84
OET18500266	ø 93.1 – 63.9mm	10	£25.20
OET18500267	ø 120.2 – 91.1mm	10	£28.98

### DUALHOOK 259 CLAMP FEATURES

- Optimized interlock design: three dual hooks provide extra high force
- Waved band edge with dimples: enhances band strength and avoids risk of breakage
- Tongue-in-groove design: provides StepLess® feature for the whole adjustable range and a smooth sliding into the recess
- Burr-free strip edges: reduced risk of damage to parts being clamped



### DUALHOOK 259 CLAMP SPECIFICATIONS

Material	Stainless steel, material no. 1.4301/ UNS
Corrosion resistance according to DIN EN ISO 9227	> 1000 h
Size range	24.5 – 120.2 mm
Width x thickness	9.0 x 0.6 mm
Ear width	10.7 mm

## EXPERTAINER FOR PASSENGER VEHICLES

### 111 PIECE EXPERTAINER PASSENGER VEHICLES CONTENTS

StepLess® Ear Clamps 167	Adjustable Clamps 163
10 x 013.3-706R	10 x 032.0-706R
10 x 016.0-706R	10 x 037.0-706R
10 x 019.2-706R	10 x 040.0-706R
Adjustable Clamps 159	Manual Pincer
10 x 120.0-708R	1 x HIP 1000 396 Standard Closing



4145

**New**

### 111 PIECE EXPERTAINER FOR PASSENGER VEHICLES

PART NUMBER	DESCRIPTION	PRICE
OET18500216	50 x StepLess® Ear Clamps 167 50 x Adjustable Clamps 163 10 x Adjustable Clamps 159 1 x HIP 1000 396 Manual Pincer	£298.20

## PASSENGER VEHICLE REFILL BAGS



**New**

### PASSENGER VEHICLE REFILL BAGS 10 PER BAG

4145

PART NUMBER	NOMINAL DIA.	BAG QTY	PRICE per bag
OET18500230	ø 10.8 – 13.3 mm	10	£10.92
OET18500231	ø 13.5 – 16.0 mm	10	£10.92
OET18500232	ø 16.0 – 19.2 mm	10	£18.90
OET18500229	ø 19.4 – 22.6 mm	10	£18.90
OET18500233	ø 22.4 – 25.6 mm	10	£18.90
OET18500235	ø 25.6 – 32.0 mm	10	£19.95
OET18500236	ø 30.6 – 37.0 mm	10	£21.84
OET18500237	ø 33.6 – 40.0 mm	10	£21.84
OET18500238	ø 43.6 – 50.0 mm	10	£22.68
OET18500239	ø 47.5 – 56.0 mm	10	£22.68
OET18500234	ø 54.0 – 120.0 mm	10	£27.30

## EXPERTAINER FOR TWO-WHEELERS

### 90 PIECE EXPERTAINER TWO-WHEELER CONTENTS

StepLess® Ear Clamps 167	Adjustable Clamps 163
10 × 010.5-505R	10 × 015.7-706R
10 × 012.3-706R	10 × 019.8-706R
10 × 013.8-706R	10 × 021.0-706R
10 × 014.5-706R	10 × 022.6-706R
	Worm Drive Clamps 126
	5 × 030.0-706R
	5 × 09/012020 W2



4145

**New**

### 90 PIECE EXPERTAINER FOR TWO-WHEELERS

PART NUMBER	DESCRIPTION	PRICE
OET18500219	80 x StepLess® Ear Clamps 167 5 x Adjustable Clamps 163 5 x Worm Drive Clamps 126	£126.00

## TWO-WHEELER REFILL BAGS

**New**

### TWO-WHEELERS REFILL BAGS 10 PER BAG



4145

PART NUMBER	NOMINAL DIA.	BAG QTY	PRICE per bag
OET18500220	ø 12.0 - 20.0 mm	10	£10.92
OET18500221	ø 23.6 - 30.0 mm	10	£9.03
OET18500222	ø 08.8 - 10.5 mm	10	£10.92
OET18500223	ø 09.8 - 12.3 mm	10	£10.92
OET18500224	ø 11.3 - 13.8 mm	10	£10.92
OET18500225	ø 12.0 - 14.5 mm	10	£10.92
OET18500226	ø 13.2 - 15.7 mm	10	£10.92
OET18500227	ø 17.8 - 21.0 mm	10	£10.92
OET18500228	ø 16.6 - 19.8 mm	10	£10.92
OET18500229	ø 19.4 - 22.6 mm	10	£18.90

## HAND INSTALLATION PINCERS – FOR THE INSTALLATION OF GENUINE OETIKER EAR CLAMPS

### DESCRIPTION

Oetiker Hand Installation Pincers (HIP) have been designed especially for Industry and Trade applications, as well as Automotive service and repair, for pinching Oetiker ear clamps quickly and easily.

**COMPOUND ACTION PINCER**  
STANDARD JAWS – STRAIGHT HANDLES

4140

PART NUMBER	JAW WIDTH	OPENING GAP	PRICE
OET14100496	19.0 mm	19.5 mm	£57.60

**COMPOUND ACTION PINCER**  
STANDARD JAWS – CURVED HANDLES

4140

PART NUMBER	JAW WIDTH	OPENING GAP	PRICE
OET14100497	19.0 mm	18.4 mm	£57.60

**COMPOUND ACTION PINCER**  
SIDE JAWS – STRAIGHT HANDLES

4140

PART NUMBER	JAW WIDTH	OPENING GAP	PRICE
OET14100498	12.4 mm	Top: 21.6 mm Side: 16.3 mm	£69.36

**COMPOUND ACTION PINCER**  
SIDE JAWS – CURVED HANDLES

4140

PART NUMBER	JAW WIDTH	OPENING GAP	PRICE
OET14100499	12.4 mm	Top: 20.3 mm Side: 15.4 mm	£69.36

## HAND CLAMP CUTTERS – FOR THE REMOVAL OF GENUINE OETIKER EAR CLAMPS

### DESCRIPTION

Oetiker Hand Clamp Cutters are designed to safely remove Oetiker Ear Clamps that can be closed with Oetiker HIP 2000 Series Hand Installation Pincers or similar power tools. FOR CLAMP REMOVAL ONLY. Orange grips distinguish Hand Clamp Cutters from Hand Installation Pincers.

**New**

**HAND CLAMP CUTTERS**  
STRAIGHT HANDLES

4140

PART NUMBER	JAW WIDTH	OPENING GAP	PRICE
OET14100516	19.0 mm	19.5 mm	£223.86

Maximum ear width 13.0 mm

**New**

**HAND CLAMP CUTTERS**  
STRAIGHT HANDLES

4140

PART NUMBER	JAW WIDTH	OPENING GAP	PRICE
OET14100519	19.0 mm	18.4 mm	£134.40

Maximum ear width 13.0 mm

## TUBE CUTTERS AND REPLACEMENT BLADES

**New**

**TUBE CUTTERS**  
CURVED HANDLES

4140

PART NUMBER	JAW WIDTH	OPENING GAP	PRICE
OET14100504	25.0 mm	28.5 mm	£223.86

**New**

**TUBE CUTTER**  
REPLACEMENT BLADES

4140

PART NUMBER	DESCRIPTION	PRICE
OET14100506	For use with OET14100504	£67.20

## W1 CLIPS

### SPECIFICATIONS

Band	Steel DC04 (EN 10139)
Finish	Silver white Cr3 zinc plated
Inner ring – if applicable	Stainless steel AISI 301, 1.4310 (EN 10151)



4180

### 1 EAR W1 CLIPS ZINC PLATED MILD STEEL

PART NUMBER	CLAMPING RANGE	PRICE
M0301208-0	7 – 9 mm	£0.23
M0301207-2	8 – 10 mm	£0.21
M0301201-3	9 – 11 mm	£0.22
M0301202-1	10 – 12 mm	£0.24
M0301203-0	11 – 13 mm	£0.26
M0301204-8	12 – 14 mm	£0.31
M0301205-6	14 – 16 mm	£0.35
M0301206-4	16 – 18 mm	£0.40



4180

### 1 EAR W1 CLIPS WITH STAINLESS STEEL INNER RING ZINC PLATED MILD STEEL

PART NUMBER	CLAMPING RANGE	PRICE
M0301100-9	7.5 – 8.5 mm	£0.50
M0301101-0	8.0 – 9.5 mm	£0.50
M0301102-9	9.0 – 10.5 mm	£0.51
M0301103-7	10.0 – 11.5 mm	£0.54
M0301104-5	10.5 – 12.5 mm	£0.57
M0301105-3	11.5 – 13.3 mm	£0.64
M0301106-1	13.0 – 15.3 mm	£0.67
M0301107-0	15.0 – 17.3 mm	£0.73



4180

### 2 EAR W1 CLIPS ZINC PLATED MILD STEEL

PART NUMBER	CLAMPING RANGE	PRICE
M0301210-1	5 – 7 mm	£0.20
M0301211-0	7 – 9 mm	£0.26
M0301212-8	9 – 11 mm	£0.26
M0301209-9	10 – 12 mm	£0.26
M0301213-6	11 – 13 mm	£0.27
M0301214-4	13 – 15 mm	£0.31
M0301215-2	14 – 17 mm	£0.39
M0301216-0	15 – 18 mm	£0.41
M0301217-9	17 – 20 mm	£0.41
M0301218-7	18 – 21 mm	£0.45
M0301219-5	20 – 23 mm	£0.50
M0301220-8	22 – 25 mm	£0.61
M0301221-6	23 – 27 mm	£0.65
M0301222-4	25 – 28 mm	£0.71
M0301223-2	28 – 31 mm	£0.78
M0301224-0	31 – 34 mm	£0.87
M0301225-9	34 – 37 mm	£1.06
M0301226-7	37 – 40 mm	£1.18
M0301227-5	40 – 43 mm	£1.31
M0301228-3	43 – 46 mm	£1.52

## W4 CLIPS – STAINLESS STEEL

### SPECIFICATIONS

Band	Stainless steel, AISI 304, 1.4301 (EN 10088-2:2005)
Finish	100% stainless steel
Inner ring – if applicable	Stainless steel AISI 301, 1.4310 (EN 10151)



4180

### 1 EAR W4 CLIPS STAINLESS STEEL

PART NUMBER	CLAMPING RANGE	PRICE
M2301244-0	7 – 9 mm	£0.61
M2301208-7	8 – 10 mm	£0.67
M2301201-0	9 – 11 mm	£0.71
M2301202-8	10 – 12 mm	£0.75
M2301203-6	11 – 13 mm	£0.77
M2301204-4	12 – 14 mm	£0.83
M2301207-9	13 – 15 mm	£0.86
M2301205-2	14 – 16 mm	£0.88
M2301245-8	15 – 17 mm	£0.88
M2301206-0	16 – 18 mm	£0.92
M2301242-3	17 – 19 mm	£1.01
M2301243-1	18 – 20 mm	£1.03



4180

### 1 EAR W4 CLIPS WITH INNER RING STAINLESS STEEL

PART NUMBER	CLAMPING RANGE	PRICE
M2301230-0	7.5 – 8.5 mm	£0.91
M2301231-9	8.2 – 9.5 mm	£0.94
M2301232-7	9.0 – 10.5 mm	£0.94
M2301233-5	10.0 – 11.5 mm	£0.97
M2301234-3	10.5 – 12.5 mm	£1.10
M2301235-1	11.5 – 13.5 mm	£1.16
M2301236-0	12.5 – 14.5 mm	£1.11
M2301237-8	13.0 – 15.3 mm	£1.23
M2301238-6	14.0 – 16.3 mm	£1.26
M2301239-4	15.0 – 17.3 mm	£1.21
M2301240-7	16.0 – 18.3 mm	£1.31
M2301241-5	17.0 – 19.3 mm	£1.33



4180

### 2 EAR W4 CLIPS STAINLESS STEEL

PART NUMBER	CLAMPING RANGE	PRICE
M2301210-8	5 – 7 mm	£0.53
M2301211-6	7 – 9 mm	£0.66
M2301212-4	9 – 11 mm	£0.74
M2301213-2	11 – 13 mm	£0.73
M2301214-0	13 – 15 mm	£0.85
M2301215-9	14 – 17 mm	£0.91
M2301216-7	15 – 18 mm	£0.98
M2301217-5	17 – 20 mm	£1.06
M2301218-3	18 – 21 mm	£1.18
M2301219-1	20 – 23 mm	£1.24
M2301220-4	22 – 25 mm	£1.52



PINCERS FOR LOW PRESSURE 'O' CLIPS

W1 & W4 CLIP PINCERS



**SIDE CLOSING PINCERS**  
FOR USE WITH W1 & W4 CLIPS

4190

PART NUMBER	DESCRIPTION	PRICE
M03011096	Side Closing Pincers	£37.54

W1 & W4 CLIP PINCERS



**FRONTAL PINCERS**  
FOR USE WITH W1 & W4 CLIPS

4190

PART NUMBER	DESCRIPTION	PRICE
M03011088	Frontal Pincers	£29.20

CLIPS

SPRING CLIPS

DESCRIPTION

Designed to distribute pressure uniformly around the application zone. Recommended when the hose is subject to rapid changes in temperature, causing expansion and contraction of the materials used in the assembly. Spring clips maintain pressure during this process, thereby preventing leaks.

SPECIFICATIONS

Band	Steel C67S
Finish	Silver white Cr3 zinc plated



**AML W1 CLIPS**  
ZINC-PLATED MILD STEEL

4180

PART NUMBER	CLAMPING RANGE		PRICE
	MIN.	MAX.	
M02014025	5.5 mm ± 0.10		£0.20
M02014033	6.4 mm ± 0.10		£0.17
M02014041	7.4 mm ± 0.15		£0.17
M02014050	8.4 mm ± 0.15		£0.16
M02014068	9.3 mm ± 0.20		£0.19
M02014076	10.3 mm ± 0.20		£0.20
M02014084	11.1 mm ± 0.20		£0.20
M02014092	12.9 mm ± 0.20		£0.24
M02014105	13.5 mm ± 0.20		£0.28
M02014113	15.6 mm ± 0.20		£0.33
M02014121	18.4 mm ± 0.40		£0.46

WIRE CLIPS

DESCRIPTION

Wire clips are a competitively priced clamping solution for use in certain applications. They are used in low pressure applications and particularly with small diameter sunken spiral hoses.

SPECIFICATIONS

Band	Spring steel TS 2500-1
Finish	Silver white Cr3 zinc plated



**AAL W1 CLIPS**  
ZINC-PLATED SPRING STEEL

4180

PART NUMBER	CLAMPING RANGE			PRICE
	MIN.	OPTIMAL	MAX.	
M02016012	7.3 mm	7.6 mm	7.8 mm	£0.08
M02016020	7.8 mm	8.1 mm	8.3 mm	£0.09
M02016039	8.3 mm	8.6 mm	8.8 mm	£0.09
M02016047	8.8 mm	9.1 mm	9.3 mm	£0.09
M02016055	9.3 mm	9.6 mm	9.9 mm	£0.09
M02016063	9.8 mm	10.1 mm	10.4 mm	£0.10
M02016071	10.4 mm	10.7 mm	11.0 mm	£0.10
M02016080	11.0 mm	11.3 mm	11.6 mm	£0.10
M02016098	11.6 mm	11.9 mm	12.3 mm	£0.12
M02016100	12.1 mm	12.8 mm	13.1 mm	£0.12
M02016119	12.9 mm	13.3 mm	13.6 mm	£0.12
M02016127	13.6 mm	14.0 mm	14.4 mm	£0.12
M02016135	14.4 mm	14.8 mm	15.1 mm	£0.17
M02016143	14.8 mm	15.5 mm	15.9 mm	£0.17
M02016151	15.9 mm	16.4 mm	16.8 mm	£0.17
M02016160	16.8 mm	17.3 mm	17.7 mm	£0.17
M02016178	17.7 mm	18.2 mm	18.7 mm	£0.18
M02016186	18.7 mm	19.2 mm	19.6 mm	£0.18
M02016194	19.6 mm	20.2 mm	20.5 mm	£0.21

PLIERS FOR CLIP CLAMPS



4190

PART NUMBER	DESCRIPTION	PRICE
M03030390	Frontal Pliers	£63.05

**DESCRIPTION**

Their rubber lining allows firm and safe clamping in the application zone and prevents potential damage due to vibration. The steel reinforced screw holes at either end ensure they clamp down firmly. P-clips are particularly recommended for mounting pipes, electric cable ducting and hoses in a multitude of different applications.

**SPECIFICATIONS**

Band	Mild steel, reinforced screw holes
Finish	Galvanised and lined with EPDM rubber



**MILD STEEL W1 CLIPS**  
**M5 METRIC SCREW**

4180

PART NUMBER	CLAMPING RANGE	BAND WIDTH	PRICE
M03003856	5.0 mm	12.0 mm	£0.59
M03003864	6.0 mm	12.0 mm	£0.59
M03003880	8.0 mm	12.0 mm	£0.59
M03003901	10.0 mm	12.0 mm	£0.59
M03003928	12.0 mm	12.0 mm	£0.81
M03003936	13.0 mm	12.0 mm	£0.81
M03003944	14.0 mm	12.0 mm	£0.81
M03003952	15.0 mm	12.0 mm	£0.81
M03003960	16.0 mm	12.0 mm	£0.81
M03003979	17.0 mm	12.0 mm	£0.81
M03003987	18.0 mm	12.0 mm	£0.81
M03003995	19.0 mm	12.0 mm	£0.81
M03004007	20.0 mm	12.0 mm	£0.81
M03004015	21.0 mm	12.0 mm	£0.97
M03004023	22.0 mm	12.0 mm	£0.97
M03004031	23.0 mm	12.0 mm	£0.97
M03004040	24.0 mm	12.0 mm	£0.97
M03004058	25.0 mm	12.0 mm	£0.97
M03004066	26.0 mm	12.0 mm	£0.97
M03004074	27.0 mm	12.0 mm	£0.97
M03004082	28.0 mm	12.0 mm	£0.97

**M6 METRIC SCREW**

M03004664	6.0 mm	15.0 mm	£0.69
M03004680	8.0 mm	15.0 mm	£0.69
M03004701	10.0 mm	15.0 mm	£0.69
M03004728	12.0 mm	15.0 mm	£0.89
M03004736	13.0 mm	15.0 mm	£0.89
M03004744	14.0 mm	15.0 mm	£0.89
M03004752	15.0 mm	15.0 mm	£0.89
M03004760	16.0 mm	15.0 mm	£0.89
M03004779	17.0 mm	15.0 mm	£0.89
M03004787	18.0 mm	15.0 mm	£0.89
M03004795	19.0 mm	15.0 mm	£0.89
M03004808	20.0 mm	15.0 mm	£0.89
M03004816	21.0 mm	15.0 mm	£1.11
M03004824	22.0 mm	15.0 mm	£1.11
M03004832	23.0 mm	15.0 mm	£1.11
M03004859	25.0 mm	15.0 mm	£1.11
M03004867	26.0 mm	15.0 mm	£1.11
M03004883	28.0 mm	15.0 mm	£1.11
M03004904	30.0 mm	15.0 mm	£1.11
M03004920	32.0 mm	15.0 mm	£1.31
M03004947	34.0 mm	15.0 mm	£1.31
M03004955	35.0 mm	15.0 mm	£1.31
M03004971	37.0 mm	15.0 mm	£1.31
M03004980	38.0 mm	15.0 mm	£1.31
M03005000	40.0 mm	15.0 mm	£1.31

**DESCRIPTIONS**

Their rubber lining allows firm and safe clamping in the application zone and prevents potential damage due to vibration. The steel reinforced screw holes at either end ensure they clamp down firmly. P-clips are particularly recommended for mounting pipes, electric cable ducting and hoses in a multitude of different applications. Manufactured entirely from AISI-304 material, it is ideal for marine applications.

**SPECIFICATIONS**

Band	AISI-304 stainless steel, reinforced screw holes
Finish	Lined with EPDM rubber



**STAINLESS STEEL W4 CLIPS**  
**M5 METRIC SCREW**

4180

PART NUMBER	CLAMPING RANGE	BAND WIDTH	PRICE
M43003859	5.0 mm	12.0 mm	£0.95
M43003867	6.0 mm	12.0 mm	£0.95
M43003883	8.0 mm	12.0 mm	£0.95
M43003904	10.0 mm	12.0 mm	£0.95
M43003920	12.0 mm	12.0 mm	£1.26
M43003939	13.0 mm	12.0 mm	£1.26
M43003947	14.0 mm	12.0 mm	£1.26
M43003955	15.0 mm	12.0 mm	£1.26
M43003963	16.0 mm	12.0 mm	£1.26
M43003971	17.0 mm	12.0 mm	£1.26
M43003980	18.0 mm	12.0 mm	£1.26
M43003998	19.0 mm	12.0 mm	£1.26
M43004000	20.0 mm	12.0 mm	£1.26
M43004018	21.0 mm	12.0 mm	£1.49
M43004026	22.0 mm	12.0 mm	£1.49
M43004034	23.0 mm	12.0 mm	£1.49
M43004042	24.0 mm	12.0 mm	£1.49
M43004050	25.0 mm	12.0 mm	£1.49
M43004069	26.0 mm	12.0 mm	£1.49
M43004077	27.0 mm	12.0 mm	£1.49
M43004085	28.0 mm	12.0 mm	£1.49

**M6 METRIC SCREW**

M43004667	6.0 mm	15.0 mm	£1.04
M43004683	8.0 mm	15.0 mm	£1.04
M43004704	10.0 mm	15.0 mm	£1.04
M43004720	12.0 mm	15.0 mm	£1.38
M43004739	13.0 mm	15.0 mm	£1.38
M43004747	14.0 mm	15.0 mm	£1.38
M43004755	15.0 mm	15.0 mm	£1.38
M43004763	16.0 mm	15.0 mm	£1.38
M43004771	17.0 mm	15.0 mm	£1.38
M43004780	18.0 mm	15.0 mm	£1.38
M43004798	19.0 mm	15.0 mm	£1.38
M43004800	20.0 mm	15.0 mm	£1.38
M43004819	21.0 mm	15.0 mm	£1.74
M43004827	22.0 mm	15.0 mm	£1.74
M43004835	23.0 mm	15.0 mm	£1.74
M43004851	25.0 mm	15.0 mm	£1.74
M43004860	26.0 mm	15.0 mm	£1.74
M43004886	28.0 mm	15.0 mm	£1.74
M43004907	30.0 mm	15.0 mm	£1.74
M43004923	32.0 mm	15.0 mm	£2.08
M43004940	34.0 mm	15.0 mm	£2.08
M43004958	35.0 mm	15.0 mm	£2.08
M43004974	37.0 mm	15.0 mm	£2.08
M43004982	38.0 mm	15.0 mm	£2.08
M43005002	40.0 mm	15.0 mm	£2.08

WORM DRIVE CLIPS

LIGHT SERIES

SPECIFICATIONS

Screw	Qst 36.3 mild steel (DIN 1.0214) Silver white zinc plated
Band & housing	Galvanised steel S/EN 10292 (DIN 1.0935)



4180

ASFA-L W1 HOSE CLIPS  
ZINC PLATED MILD STEEL BAND

PART NUMBER	CLAMPING RANGE	BAND WIDTH	PRICE
M03008753	8 – 16 mm	9.0 mm	£0.57
M03008761	12 – 22 mm	9.0 mm	£0.61
M03008770	16 – 27 mm	9.0 mm	£0.65
M03008788	20 – 32 mm	9.0 mm	£0.68
M03008796	25 – 40 mm	9.0 mm	£0.82
M03008809	30 – 45 mm	9.0 mm	£0.84
M03008817	32 – 50 mm	9.0 mm	£0.87
M03008825	40 – 60 mm	9.0 mm	£0.92
M03008833	50 – 70 mm	9.0 mm	£1.19
M03008841	60 – 80 mm	9.0 mm	£1.25
M03008850	70 – 90 mm	9.0 mm	£1.39
M03008868	80 – 100 mm	9.0 mm	£1.46
M03008876	90 – 110 mm	9.0 mm	£1.55
M03008884	100 – 120 mm	9.0 mm	£1.63
M03008892	110 – 130 mm	9.0 mm	£1.71
M03008905	120 – 140 mm	9.0 mm	£1.78
M03008913	130 – 150 mm	9.0 mm	£1.84
M03008921	140 – 160 mm	9.0 mm	£1.92

HEAVY SERIES

SPECIFICATIONS

Screw	Qst 36.3 mild steel (DIN 1.0214) Silver white zinc plated
Band & housing	Galvanised steel S/EN 10292 (DIN 1.0935)



4180

ASFA-S W1 HOSE CLIPS  
ZINC PLATED MILD STEEL BAND

PART NUMBER	CLAMPING RANGE	BAND WIDTH	PRICE
M0300900-1	16 – 27 mm	12.0 mm	£1.01
M0300900-2	20 – 32 mm	12.0 mm	£1.01
M0300900-3	25 – 40 mm	12.0 mm	£1.07
M0300900-4	30 – 45 mm	12.0 mm	£1.13
M0300900-5	32 – 50 mm	12.0 mm	£1.13
M0300900-6	40 – 60 mm	12.0 mm	£1.23
M0300900-7	50 – 70 mm	12.0 mm	£1.34
M0300900-8	60 – 80 mm	12.0 mm	£1.70
M0300900-9	70 – 90 mm	12.0 mm	£1.77
M0300901-0	80 – 100 mm	12.0 mm	£1.88
M0300901-1	90 – 110 mm	12.0 mm	£1.94
M0300901-2	100 – 120 mm	12.0 mm	£2.12
M0300901-3	110 – 130 mm	12.0 mm	£2.13
M0300901-4	120 – 140 mm	12.0 mm	£2.31
M0300901-5	130 – 150 mm	12.0 mm	£2.37
M0300901-6	140 – 160 mm	12.0 mm	£2.44
M0300901-7	150 – 170 mm	12.0 mm	£3.00
M0300901-8	160 – 180 mm	12.0 mm	£3.01
M0300901-9	170 – 190 mm	12.0 mm	£3.39
M0300902-0	180 – 200 mm	12.0 mm	£3.46
M0300902-1	190 – 210 mm	12.0 mm	£3.61
M0300902-2	200 – 220 mm	12.0 mm	£3.68
M0300902-3	210 – 230 mm	12.0 mm	£3.81
M0300902-4	220 – 240 mm	12.0 mm	£3.86



FEATURES

- UNEX clips will seal at high pressures
- Durable and rust proof
- Hose life often improved due to low friction inner band
- Ideal for use with soft tubing

SPECIFICATIONS

Band	304 stainless steel
Screw and bush	Brass
Standard H hexagon cap	304 stainless steel



4185

UNEX CLIPS  
'D' TYPE

PART NUMBER	CLAMPING RANGE	PRICE
UNI-10-D	7.4 – 10.0 mm	£2.16
UNI-12-D	9.0 – 12.0 mm	£2.16
UNI-14-D	9.6 – 14.0 mm	£2.16
UNI-17-D	12.2 – 17.0 mm	£2.16
UNI-19-D	14.0 – 19.0 mm	£2.16
UNI-21-D	15.5 – 21.0 mm	£2.16
UNI-22-D	17.3 – 22.0 mm	£2.16
UNI-25-D	19.8 – 25.0 mm	£2.16
UNI-27-D	21.8 – 27.0 mm	£2.39
UNI-30-D	25.0 – 30.0 mm	£2.39

HOSE CLIPS



SCREWDRIVER  
FOR USE WITH  
'D' TYPE UNEX CLIPS



4185

PART NUMBER	DESCRIPTION	PRICE
UNEX/D	Screw slot head	£108.00



4185

UNEX CLIPS  
'H' TYPE

PART NUMBER	CLAMPING RANGE	PRICE
UNI-10-H	7.4 – 10.0 mm	£2.69
UNI-12-H	9.0 – 12.0 mm	£2.69
UNI-14-H	9.6 – 14.0 mm	£2.69
UNI-17-H	12.2 – 17.0 mm	£2.69
UNI-19-H	14.0 – 19.0 mm	£2.69
UNI-21-H	15.5 – 21.0 mm	£2.69
UNI-22-H	17.3 – 22.0 mm	£2.69
UNI-25-H	19.8 – 25.0 mm	£2.69
UNI-27-H	21.8 – 27.0 mm	£2.89

## LIGHT SERIES

### SPECIFICATIONS – W2 CLIPS

Screw	Qst 36.3 mild steel (DIN 1.0214) Silver white zinc plated
Band & housing	X6Cr17 stainless steel (DIN 1.4016) (AISI-430)

### SPECIFICATIONS – W4 CLIPS

Screw	AISI-304 Cu stainless steel
Band & housing	X5CrNi1810 stainless steel (DIN 1.4301) (AISI-304)



4180

### ASFA-L W2 HOSE CLIPS STAINLESS STEEL BAND

PART NUMBER	CLAMPING RANGE	BAND WIDTH	PRICE
M0301650-8	8 – 12 mm	7.5 mm	£1.05
M0301651-6	8 – 16 mm	9.0 mm	£0.66
M0301652-4	12 – 22 mm	9.0 mm	£0.70
M0301653-2	16 – 27 mm	9.0 mm	£0.73
M0301654-0	20 – 32 mm	9.0 mm	£0.76
M0301655-9	25 – 40 mm	9.0 mm	£0.89
M0301656-7	30 – 45 mm	9.0 mm	£0.94
M0301657-5	32 – 50 mm	9.0 mm	£0.98
M0301658-3	40 – 60 mm	9.0 mm	£1.09
M0301659-1	50 – 70 mm	9.0 mm	£1.35
M0301660-4	60 – 80 mm	9.0 mm	£1.42
M0301661-2	70 – 90 mm	9.0 mm	£1.61
M0301662-0	80 – 100 mm	9.0 mm	£1.65
M0301663-9	90 – 110 mm	9.0 mm	£1.89
M0301664-7	100 – 120 mm	9.0 mm	£2.06
M0301665-5	110 – 130 mm	9.0 mm	£2.26
M0301666-3	120 – 140 mm	9.0 mm	£2.18
M0301667-1	130 – 150 mm	9.0 mm	£2.27
M0301668-0	140 – 160 mm	9.0 mm	£2.33



4180

### ASFA-L W4 HOSE CLIPS ALL STAINLESS STEEL

PART NUMBER	CLAMPING RANGE	BAND WIDTH	PRICE
M0301400-0	8 – 12 mm	9.0 mm	£2.48
M0301401-9	8 – 16 mm	9.0 mm	£1.79
M0301402-7	12 – 22 mm	9.0 mm	£1.88
M0301403-5	16 – 27 mm	9.0 mm	£1.95
M0301404-3	20 – 32 mm	9.0 mm	£2.01
M0301403-1	20 – 35 mm	9.0 mm	£1.96
M0301405-1	25 – 40 mm	9.0 mm	£2.16
M0301406-0	30 – 45 mm	9.0 mm	£2.20
M0301407-8	32 – 50 mm	9.0 mm	£2.24
M0301408-6	40 – 60 mm	9.0 mm	£2.32
M0301409-4	50 – 70 mm	9.0 mm	£3.00
M0301410-7	60 – 80 mm	9.0 mm	£3.13
M0301411-5	70 – 90 mm	9.0 mm	£3.25
M0301412-3	80 – 100 mm	9.0 mm	£3.42
M0301414-0	90 – 110 mm	9.0 mm	£3.84
M0301415-8	100 – 120 mm	9.0 mm	£3.90
M0301416-6	110 – 130 mm	9.0 mm	£3.94
M0301417-4	120 – 140 mm	9.0 mm	£3.95
M0301418-2	130 – 150 mm	9.0 mm	£4.07
M0301419-0	140 – 160 mm	9.0 mm	£4.55



4190

### FLEXIDRIVER FOR USE WITH ABOVE CLIPS

PART NUMBER	DESCRIPTION	PRICE
M03091036	Flexidriver	£8.67

## HEAVY SERIES

### SPECIFICATIONS – W2 CLIPS

Screw	Qst 36.3 mild steel (DIN 1.0214) Silver white zinc plated
Band & housing	X6Cr17 stainless steel (DIN 1.4016) (AISI-430)

### SPECIFICATIONS – W4 CLIPS

Screw	AISI-304 Cu stainless steel
Band & housing	X5CrNi1810 stainless steel (DIN 1.4301) (AISI-304)



4180

### ASFA-S W2 HOSE CLIPS STAINLESS STEEL BAND

PART NUMBER	CLAMPING RANGE	BAND WIDTH	PRICE
M03017017	16 – 27 mm	12.0 mm	£1.17
M03017025	20 – 32 mm	12.0 mm	£1.20
M03017033	25 – 40 mm	12.0 mm	£1.39
M03017009	30 – 45 mm	12.0 mm	£1.39
M03017041	32 – 50 mm	12.0 mm	£1.41
M03017050	40 – 60 mm	12.0 mm	£1.61
M03017068	50 – 70 mm	12.0 mm	£1.78
M03017076	60 – 80 mm	12.0 mm	£2.11
M03017084	70 – 90 mm	12.0 mm	£2.22
M03017092	80 – 100 mm	12.0 mm	£2.34
M03017105	90 – 110 mm	12.0 mm	£2.48
M03017113	100 – 120 mm	12.0 mm	£2.72
M03017121	110 – 130 mm	12.0 mm	£2.76
M03017130	120 – 140 mm	12.0 mm	£3.05
M03017148	130 – 150 mm	12.0 mm	£3.15
M03017156	140 – 160 mm	12.0 mm	£3.23
M03017164	150 – 170 mm	12.0 mm	£3.47
M03017172	160 – 180 mm	12.0 mm	£3.54
M03017180	170 – 190 mm	12.0 mm	£3.86
M03017199	180 – 200 mm	12.0 mm	£4.10
M03017201	190 – 210 mm	12.0 mm	£4.21
M03017210	200 – 220 mm	12.0 mm	£4.28
M03017228	210 – 230 mm	12.0 mm	£4.39
M03017236	220 – 240 mm	12.0 mm	£4.48



4180

### ASFA-S W4 HOSE CLIPS ALL STAINLESS STEEL

PART NUMBER	CLAMPING RANGE	BAND WIDTH	PRICE
M0301473-0	16 – 27 mm	12.0 mm	£2.98
M0301451-0	20 – 32 mm	12.0 mm	£3.12
M0301452-9	25 – 40 mm	12.0 mm	£3.30
M0301474-8	30 – 45 mm	12.0 mm	£3.50
M0301453-7	32 – 50 mm	12.0 mm	£3.51
M0301454-5	40 – 60 mm	12.0 mm	£3.74
M0301455-3	50 – 70 mm	12.0 mm	£4.09
M0301456-1	60 – 80 mm	12.0 mm	£4.52
M0301457-0	70 – 90 mm	12.0 mm	£4.74
M0301458-8	80 – 100 mm	12.0 mm	£4.93
M0301459-6	90 – 110 mm	12.0 mm	£5.08
M0301460-9	100 – 120 mm	12.0 mm	£5.48
M0301461-7	110 – 130 mm	12.0 mm	£5.53
M0301462-5	120 – 140 mm	12.0 mm	£5.64
M0301463-3	130 – 150 mm	12.0 mm	£5.87
M0301464-1	140 – 160 mm	12.0 mm	£6.04
M0301465-0	150 – 170 mm	12.0 mm	£6.53
M0301466-8	160 – 180 mm	12.0 mm	£6.82
M0301467-6	170 – 190 mm	12.0 mm	£6.89
M0301468-4	180 – 200 mm	12.0 mm	£7.30
M0301469-2	190 – 210 mm	12.0 mm	£7.57
M0301470-5	200 – 220 mm	12.0 mm	£7.93
M0301471-3	210 – 230 mm	12.0 mm	£8.25
M0301472-1	220 – 240 mm	12.0 mm	£8.63

## STANDARD PRESSURE CLIPS

### SPECIFICATIONS

Screw	6 strength grey white Cr3 zinc plated
Nut	6 strength white Cr3 zinc plated
Band	Aluzinc AC2 (Thickness 0.5 mm)



4165

### NORMAL MINI CLIPS ZINC PLATED MILD STEEL BAND

PART NUMBER	CLAMPING RANGE	BAND WIDTH	PRICE
M0301051-0	6 mm	8.4 mm	£0.42
M0301052-8	8 mm	9.0 mm	£0.43
M0301053-6	9 mm	10.0 mm	£0.51
M0301054-4	9.5 – 10 mm	10.0 mm	£0.51
M0301055-2	10 – 11 mm	10.0 mm	£0.51
M0301056-0	12 – 13 mm	10.0 mm	£0.51
M0301057-9	13 – 14 mm	10.0 mm	£0.53
M0301058-7	14 – 15 mm	10.0 mm	£0.54
M0301059-5	15 – 17 mm	10.0 mm	£0.54
M0301060-8	16 – 18 mm	10.0 mm	£0.55
M0301061-6	18 – 20 mm	10.0 mm	£0.56
M0301062-4	19 – 21 mm	10.0 mm	£0.57
M0301063-2	20 – 22 mm	10.0 mm	£0.57
M0301064-0	22 – 25 mm	10.0 mm	£0.58
M0301065-9	23 – 26 mm	10.0 mm	£0.58
M0301066-7	25 – 28 mm	10.0 mm	£0.60
M0301067-5	26 – 29 mm	10.0 mm	£0.61
M0301068-3	29 – 32 mm	10.0 mm	£0.61

## HIGH PRESSURE CLAMPS

### SPECIFICATIONS

T bolt	Steel QST 36-3 (DIN 1.0213)
Band & bridge	F111 white zinc-plated mild steel
Washer & trunnion	Steel DIN 1.0333



4165

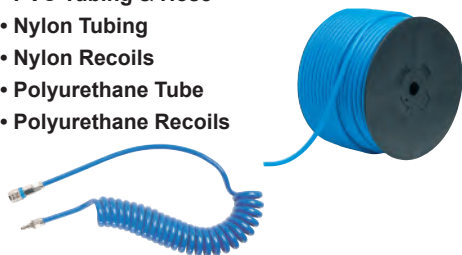
### SUPER W1 HOSE CLAMPS MILD STEEL BAND

PART NUMBER	CLAMPING RANGE	BAND WIDTH	PRICE
M0301826-3	17 – 19 mm	18.0 mm	£1.44
M0301827-1	20 – 22 mm	18.0 mm	£1.46
M0301828-0	23 – 25 mm	18.0 mm	£1.48
M0301829-8	26 – 28 mm	18.0 mm	£1.51
M0301830-0	29 – 31 mm	20.0 mm	£1.89
M0301831-9	32 – 35 mm	20.0 mm	£2.02
M0301832-7	36 – 39 mm	20.0 mm	£2.08
M0301833-5	40 – 43 mm	20.0 mm	£2.14
M0301801-0	44 – 47 mm	22.0 mm	£2.89
M0301802-8	48 – 51 mm	22.0 mm	£2.97
M0301803-6	52 – 55 mm	22.0 mm	£3.11
M0301804-4	56 – 59 mm	22.0 mm	£3.22
M0301805-2	60 – 63 mm	22.0 mm	£3.33
M0301806-0	64 – 67 mm	22.0 mm	£3.42
M0301807-9	68 – 73 mm	24.0 mm	£4.25
M0301808-7	74 – 79 mm	24.0 mm	£4.39
M0301809-5	80 – 85 mm	24.0 mm	£4.54
M0301810-8	86 – 91 mm	24.0 mm	£4.63
M0301811-6	92 – 97 mm	24.0 mm	£4.76
M0301812-4	98 – 103 mm	24.0 mm	£4.97
M0301813-2	104 – 112 mm	24.0 mm	£5.43
M0301814-0	113 – 121 mm	24.0 mm	£5.53
M0301815-9	122 – 130 mm	24.0 mm	£6.29
M0301816-7	131 – 139 mm	26.0 mm	£8.32
M0301817-5	140 – 148 mm	26.0 mm	£8.44
M0301818-3	149 – 161 mm	26.0 mm	£9.34
M0301819-1	162 – 174 mm	26.0 mm	£10.02
M0301820-4	175 – 187 mm	26.0 mm	£10.28
M0301821-2	188 – 200 mm	26.0 mm	£10.94
M0301822-0	201 – 213 mm	26.0 mm	£10.96
M0301823-9	214 – 226 mm	26.0 mm	£11.41
M0301824-7	227 – 239 mm	26.0 mm	£11.68
M0301825-5	240 – 252 mm	26.0 mm	£12.23

You may also need ...

- PVC Tubing & Hose
- Nylon Tubing
- Nylon Recoils
- Polyurethane Tube
- Polyurethane Recoils

**Tubing, hose  
and ducting**



... on pages 496 – 567, section 10

## REPAIR KITS



4195

### MIKALOR REPAIR KIT

PART NUMBER	DESCRIPTION	PRICE
KIT-MIK	141 Assorted Mikalor Clips	£79.78

### MIKALOR REPAIR KIT CONTENTS

24 x M0301650-8	14 x M0301654-0
32 x M0301651-6	10 x M0301655-9
28 x M0301652-4	13 x M0301656-7
13 x M0301653-2	7 x M0301657-5

## HIGH PRESSURE

### SPECIFICATIONS – W2 CLAMPS

Band & bridge	X6Cr17 stainless steel (DIN 1.4016) (AISI 430)
Nut	Steel, DC04 / DC03
Bolt	19MnB4 1.5523 (EN-10269)



4165

### SUPRA W2 HOSE CLAMPS STAINLESS STEEL BAND

PART NUMBER	CLAMPING RANGE	BAND WIDTH	PRICE
M0301901-2	17 – 19 mm	18 mm	£2.49
M0301902-0	19 – 21 mm	18 mm	£2.52
M0301903-9	21 – 23 mm	18 mm	£2.54
M0301904-7	23 – 25 mm	18 mm	£2.58
M0301905-5	25 – 27 mm	18 mm	£2.60
M0301906-3	27 – 29 mm	18 mm	£2.64
M0301907-1	29 – 31 mm	20 mm	£2.90
M0301908-0	31 – 34 mm	20 mm	£3.00
M0301909-8	34 – 37 mm	20 mm	£3.14
M0301910-0	37 – 40 mm	20 mm	£3.16
M0301911-9	40 – 43 mm	20 mm	£3.19
M0301912-7	43 – 47 mm	20 mm	£4.08
M0301913-5	47 – 51 mm	20 mm	£4.24
M0301914-3	51 – 55 mm	20 mm	£4.36
M0301915-1	55 – 59 mm	20 mm	£4.40
M0301916-0	59 – 63 mm	20 mm	£4.60
M0301917-8	63 – 68 mm	20 mm	£4.77
M0301918-6	68 – 73 mm	25 mm	£6.11
M0301919-4	73 – 79 mm	25 mm	£6.25
M0301920-7	79 – 85 mm	25 mm	£6.41
M0301921-5	85 – 91 mm	25 mm	£6.57
M0301922-3	91 – 97 mm	25 mm	£6.73
M0301923-1	97 – 104 mm	25 mm	£6.84
M0301924-0	104 – 112 mm	25 mm	£7.20
M0301925-8	112 – 121 mm	25 mm	£7.75
M0301926-6	121 – 130 mm	25 mm	£8.29
M0301927-4	130 – 140 mm	28 mm	£10.78
M0301928-2	140 – 150 mm	28 mm	£11.02
M0301929-0	150 – 162 mm	28 mm	£11.30
M0301930-3	162 – 174 mm	28 mm	£11.67
M0301931-1	174 – 187 mm	28 mm	£11.96
M0301932-0	187 – 200 mm	28 mm	£12.11
M0301933-8	200 – 213 mm	28 mm	£12.42
M0301934-6	213 – 226 mm	28 mm	£12.71
M0301935-4	226 – 239 mm	28 mm	£13.76
M0301936-2	239 – 252 mm	28 mm	£14.46
M03019370	252 – 265 mm	28 mm	£15.03
M03019477	265 – 278 mm	28 mm	£15.93
M03019392	278 – 291 mm	28 mm	£16.90
M03019403	291 – 304 mm	28 mm	£17.90
M03019411	304 – 317 mm	28 mm	£18.98
M03019485	317 – 330 mm	28 mm	£20.21
M03019422	330 – 343 mm	28 mm	£21.53
M03019433	343 – 356 mm	28 mm	£23.03
M03019444	356 – 369 mm	28 mm	£24.65
M03019455	369 – 382 mm	28 mm	£26.37
M03019499	382 – 395 mm	28 mm	£28.22
M03019500	395 – 408 mm	28 mm	£30.19

### SPECIFICATIONS – W4 CLAMPS

Band, bridge & nut	X5CrNi 1810 stainless steel DIN 1.4301) (AISI 304)
Bolt	AISI 304 CU stainless steel



4165

### SUPRA W4 HOSE CLAMPS ALL STAINLESS STEEL

PART NUMBER	CLAMPING RANGE	BAND WIDTH	PRICE
M0301301-6	17 – 19 mm	18 mm	£6.00
M0301302-4	19 – 21 mm	18 mm	£6.07
M0301303-2	21 – 23 mm	18 mm	£6.15
M0301304-0	23 – 25 mm	18 mm	£6.24
M0301305-9	25 – 27 mm	18 mm	£6.32
M0301306-7	27 – 29 mm	18 mm	£6.45
M0301307-5	29 – 31 mm	20 mm	£7.06
M0301308-3	31 – 34 mm	20 mm	£7.15
M0301309-1	34 – 37 mm	20 mm	£7.34
M0301310-4	37 – 40 mm	20 mm	£7.44
M0301311-2	40 – 43 mm	20 mm	£7.54
M0301312-0	43 – 47 mm	20 mm	£9.51
M0301313-9	47 – 51 mm	20 mm	£9.85
M0301314-7	51 – 55 mm	20 mm	£10.04
M0301315-5	55 – 59 mm	20 mm	£10.34
M0301316-3	59 – 63 mm	20 mm	£10.63
M0301317-1	63 – 68 mm	20 mm	£11.31
M0301318-0	68 – 73 mm	25 mm	£14.29
M0301319-8	73 – 79 mm	25 mm	£14.77
M0301320-0	79 – 85 mm	25 mm	£15.06
M0301321-9	85 – 91 mm	25 mm	£15.41
M0301322-7	91 – 97 mm	25 mm	£15.73
M0301323-5	97 – 104 mm	25 mm	£16.17
M0301324-3	104 – 112 mm	25 mm	£16.96
M0301325-1	112 – 121 mm	25 mm	£18.09
M0301326-0	121 – 130 mm	25 mm	£19.89
M0301327-8	130 – 140 mm	28 mm	£29.34
M0301328-6	140 – 150 mm	28 mm	£29.83
M0301329-4	150 – 162 mm	28 mm	£30.49
M0301330-7	162 – 174 mm	28 mm	£30.97
M0301331-5	174 – 187 mm	28 mm	£31.46
M0301332-3	187 – 200 mm	28 mm	£31.95
M0301333-1	200 – 213 mm	28 mm	£32.44
M0301334-0	213 – 226 mm	28 mm	£32.76
M0301335-8	226 – 239 mm	28 mm	£33.58
M0301336-6	239 – 252 mm	28 mm	£33.74
M03013374	252 – 265 mm	28 mm	£35.46
M03013390	265 – 278 mm	28 mm	£37.94
M03013422	278 – 291 mm	28 mm	£40.60
M03013433	291 – 304 mm	28 mm	£43.44
M03013444	304 – 317 mm	28 mm	£46.48
M03013403	317 – 330 mm	28 mm	£50.66
M03013455	330 – 343 mm	28 mm	£55.22
M03013466	343 – 356 mm	28 mm	£60.19
M03013477	356 – 369 mm	28 mm	£65.60
M03013488	369 – 382 mm	28 mm	£71.51
M03013499	382 – 395 mm	28 mm	£77.94
M03013500	395 – 408 mm	28 mm	£84.96



### DESCRIPTION

- High quality 201 stainless steel BAND-IT® band and buckles
- Good resistance to oxidation and moderate corrosive agents
- EASY SCALE – Patented imprint on the band to quickly determine band length without waste



### BAND-IT ROLL 30.5 M COILS

4155

PART NUMBER	BAND WIDTH	BREAK STRENGTH	PRICE
BA-C202	1/4" / 6.4 mm	500 lbs	£48.04
BA-C203	3/8" / 9.6 mm	900 lbs	£57.75
BA-C204	1/2" / 12.7 mm	1500 lbs	£81.57
BA-C205	5/8" / 15.9 mm	1875 lbs	£101.17
BA-C206	3/4" / 19.1 mm	2250 lbs	£119.72



### VALU-STRAP™

4155

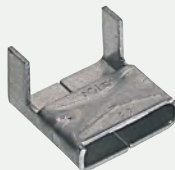
PART NUMBER	BAND WIDTH	BREAK STRENGTH	PRICE
BA-C13399	3/8" / 9.6 mm	450 lbs	£44.70
BA-C13499	1/2" / 12.7 mm	600 lbs	£60.36
BA-C13599	5/8" / 15.9 mm	750 lbs	£76.03
BA-C13699	3/4" / 19.1 mm	900 lbs	£89.13



### BAND-IT BUCKLES PACK QTY – 100 / BOX SUPPLIED SINGULARLY

4155

PART NUMBER	WIDTH	PRICE per clip
BA-C252	1/4" / 6.4 mm	£0.32
BA-C253	3/8" / 9.6 mm	£0.37
BA-C254	1/2" / 12.7 mm	£0.52
BA-C255	5/8" / 15.9 mm	£0.63
BA-C256	3/4" / 19.1 mm	£0.79



### VALUCLIP PACK QTY – 100 / BOX SUPPLIED SINGULARLY

4155

PART NUMBER	WIDTH	PRICE per clip
BA-C15399	3/8" / 9.6 mm	£0.33
BA-C15499	1/2" / 12.7 mm	£0.42
BA-C15599	5/8" / 15.9 mm	£0.48
BA-C15699	3/4" / 19.1 mm	£0.55



### BAND-IT ROLL & DISPENSER 30.5 M COILS

4155

PART NUMBER	BAND WIDTH	BREAK STRENGTH	PRICE
BA-C203Y	3/8" / 9.53 mm	900 lbs	£125.95
BA-C204B	1/2" / 12.70 mm	1500 lbs	£90.55
BA-C205G	5/8" / 15.88 mm	1875 lbs	£111.29
BA-C206R	3/4" / 19.05 mm	2250 lbs	£130.99



### BAND-IT TOOL FOR BAND AND BUCKLE

4155

PART NUMBER	DESCRIPTION	PRICE
BA-C001	Use with bands up to 3/4"	£313.96



### HEAVY DUTY BAND-IT TOOL FOR BAND-IT BAND AND BUCKLE

4155

PART NUMBER	DESCRIPTION	PRICE
BA-C003	Use with bands up to 3/4"	£808.69



### POK-IT TOOL BUILT IN CUTTER

4155

PART NUMBER	DESCRIPTION	PRICE
BA-J020	Use with 1/4" or 3/8" bands	£397.22

### SCRUI-SEAL CLAMPING SYSTEM

#### DESCRIPTION

- A rack and pinion system used with band to create any size clamp
- Separately packaged rack and housing and band for flexibility



### SCRUI-SEAL RACK AND HOUSING

4155

PART NUMBER	DESCRIPTION	PRICE per box
BA-M211	10 Scru-Seal racks and 10 Housings	£136.12

## JR. SMOOTH

### DESCRIPTION

- High quality 201 stainless steel
- Vibration resistant
- Gap free internal design to prevent leaks especially on thinner hoses



4155



4155

### BAND-IT JR. SMOOTH ID CLAMPS 3/8" / 9.5 MM BANDWIDTH

PART NUMBER	CLAMP ID	CLAMP ID	PRICE
BA-JS201	13/16"	20.6 mm	£1.78
BA-JS243	1"	25.4 mm	£2.06
BA-JS202	1 3/8"	34.9 mm	£1.92
BA-JS245	2"	50.8 mm	£2.07
BA-JS221	2 1/2"	63.5 mm	£2.35
BA-JS246	3"	76.2 mm	£2.62
BA-JS255	3 1/2"	88.9 mm	£7.30
BA-JS248	4"	101.6 mm	£3.48

### BAND-IT JR. SMOOTH ID CLAMPS 5/8" / 15.9 MM BANDWIDTH

PART NUMBER	CLAMP ID	CLAMP ID	PRICE
BA-JS205	1 1/2"	38.1 mm	£3.35
BA-JS206	1 3/4"	44.5 mm	£3.74
BA-JS207	2"	50.8 mm	£4.08
BA-JS208	2 1/4"	57.2 mm	£4.32
BA-JS209	2 1/2"	63.5 mm	£4.37

### 1/2" / 12.7 MM BANDWIDTH

BA-JS203	1"	25.4 mm	£2.59
BA-JS204	1 1/4"	31.8 mm	£2.86
BA-JS231	1 1/2"	38.1 mm	£3.27
BA-JS236	1 3/4"	44.5 mm	£3.64
BA-JS237	2"	50.8 mm	£3.75
BA-JS233	2 1/2"	63.5 mm	£5.36
BA-JS230	2 3/4"	69.9 mm	£3.88
BA-JS234	3"	76.2 mm	£4.32
BA-JS247	3 1/2"	88.9 mm	£5.90
BA-JS249	4"	101.6 mm	£5.48

### 3/4" / 19.1 MM BANDWIDTH

BA-JS210	2 3/4"	69.9 mm	£5.69
BA-JS211	3"	76.2 mm	£6.02
BA-JS212	3 1/2"	88.9 mm	£6.36
BA-JS213	4"	101.6 mm	£3.68
BA-JS214	4 1/2"	114.0 mm	£3.86
BA-JS215	5"	127.0 mm	£4.24

## JUNIOR® SMOOTH TOOLS



4155

### JUNIOR FOR BAND-IT CLAMPS

PART NUMBER	DESCRIPTION	PRICE
BA-C002	Use with bands up to 3/4"	£858.61



4155

### HEAVY DUTY JUNIOR ADAPTOR TOOL MUST BE USED WITH BA-C001 OR BA-C003

PART NUMBER	DESCRIPTION	PRICE
BA-J050	Use with bands up to 3/4"	£534.58



4155

### JUNIOR ADAPTOR TOOL MUST BE USED WITH BA-C001

PART NUMBER	DESCRIPTION	PRICE
BA-J001	Use with bands up to 3/4"	£408.77





# WORM DRIVE HOSE CLIPS



## JUBILEE® ORIGINAL RANGE HOSE CLIPS

### APPLICABLE STANDARDS

Jubilee clips are Kitemarked™ to BS 5315:1991, the company is registered to BS EN ISO 9001:2008 Quality Management System and ISO 14001 Environmental Management System. The Original and High Torque stainless steel ranges are also Lloyd's Register Type Approved, essential when used for marine applications.



### ZINC PROTECTED MILD STEEL CLIPS

Industry recommendations	<ul style="list-style-type: none"> <li>• Agricultural</li> <li>• Automotive</li> <li>• Hardware / DIY</li> <li>• Industrial</li> </ul>
Corrosion resistance*	240 hours NSS test
Fastening	7 mm A/F screw
<b>304 GRADE STAINLESS STEEL CLIPS</b>	
Industry recommendations	<ul style="list-style-type: none"> <li>• Agricultural</li> <li>• Food</li> <li>• Hardware / DIY</li> <li>• Industrial</li> <li>• Marine</li> <li>• Oil / gas</li> </ul>
Corrosion resistance*	1000 hours NSS test
Fastening	7 mm A/F screw
<b>316 GRADE STAINLESS STEEL CLIPS</b>	
Industry recommendations	<ul style="list-style-type: none"> <li>• Food</li> <li>• Marine</li> <li>• Oil / gas</li> </ul>
Corrosion resistance*	2000 hours NSS test
Fastening	7 mm A/F screw



### ZINC PROTECTED MILD STEEL CLIPS PRICE PER CLIP

4110

PART NUMBER	CLAMPING RANGE	BAND WIDTH	BOX QTY	PRICE per clip
J 000	9.5 – 12 mm	9.9 mm	10	£0.87
J MOO	11 – 16 mm	9.9 mm	10	£0.87
J OO	13 – 20 mm	9.9 mm	10	£0.87
J O	16 – 22 mm	13.0 mm	10	£1.03
J OX	18 – 25 mm	13.0 mm	10	£1.03
J 1A	22 – 30 mm	13.0 mm	10	£1.06
J 1	25 – 35 mm	13.0 mm	10	£1.14
J 1X	30 – 40 mm	13.0 mm	10	£1.18
J 2A	35 – 50 mm	13.0 mm	10	£1.25
J 2	40 – 55 mm	13.0 mm	10	£1.33
J 2X	45 – 60 mm	13.0 mm	10	£1.41
J 3	55 – 70 mm	13.0 mm	10	£1.52
J 3X	60 – 80 mm	13.0 mm	1	£1.67
J 4	70 – 90 mm	13.0 mm	1	£1.75
J 4X	85 – 100 mm	13.0 mm	1	£1.94
J 5	90 – 120 mm	13.0 mm	1	£2.20
J 6	110 – 140 mm	13.0 mm	1	£2.51
J 6X	120 – 150 mm	13.0 mm	1	£2.66
J 7	135 – 165 mm	13.0 mm	1	£2.81
J 7 1/2	158 – 190 mm	13.0 mm	1	£3.38
J 8 1/2	184 – 216 mm	13.0 mm	1	£3.72
J 9 1/2	210 – 242 mm	13.0 mm	1	£4.07
J 10 1/2	235 – 267 mm	13.0 mm	1	£4.41
J 11 1/2	260 – 292 mm	13.0 mm	1	£4.79
J 12 1/2	286 – 318 mm	13.0 mm	1	£5.13



### 304 GRADE STAINLESS STEEL CLIPS PRICE PER CLIP

4110

PART NUMBER	CLAMPING RANGE	BAND WIDTH	BOX QTY	PRICE per clip
J 000SS	9.5 – 12 mm	9.9 mm	10	£2.13
J MO0SS	11 – 16 mm	9.9 mm	10	£2.17
J OOSS	13 – 20 mm	9.9 mm	10	£2.17
J OSS	16 – 22 mm	13.0 mm	10	£2.62
J OXSS	18 – 25 mm	13.0 mm	10	£2.70
J 1ASS	22 – 30 mm	13.0 mm	10	£2.89
J 1SS	25 – 35 mm	13.0 mm	10	£3.00
J 1XSS	30 – 40 mm	13.0 mm	10	£3.08
J 2ASS	35 – 50 mm	13.0 mm	10	£3.42
J 2SS	40 – 55 mm	13.0 mm	10	£3.61
J 2XSS	45 – 60 mm	13.0 mm	10	£3.76
J 3SS	55 – 70 mm	13.0 mm	10	£4.03
J 3XSS	60 – 80 mm	13.0 mm	1	£4.26
J 4SS	70 – 90 mm	13.0 mm	1	£4.48
J 4XSS	85 – 100 mm	13.0 mm	1	£4.75
J 5SS	90 – 120 mm	13.0 mm	1	£5.17
J 6SS	110 – 140 mm	13.0 mm	1	£5.51
J 6XSS	120 – 150 mm	13.0 mm	1	£5.89
J 7SS	135 – 165 mm	13.0 mm	1	£6.23
J 7 1/2SS	158 – 190 mm	13.0 mm	1	£6.92
J 8 1/2SS	184 – 216 mm	13.0 mm	1	£7.87
J 9 1/2SS	210 – 242 mm	13.0 mm	1	£8.85
J 10 1/2SS	235 – 267 mm	13.0 mm	1	£9.65
J 11 1/2SS	260 – 292 mm	13.0 mm	1	£10.30
J 12 1/2SS	286 – 318 mm	13.0 mm	1	£10.83



### 316 GRADE STAINLESS STEEL CLIPS PRICE PER CLIP

4110

PART NUMBER	CLAMPING RANGE	BAND WIDTH	BOX QTY	PRICE per clip
J 000SS316	9.5 – 12 mm	9.9 mm	10	£3.12
J M00SS316	11 – 16 mm	9.9 mm	10	£3.15
J 00SS316	13 – 20 mm	9.9 mm	10	£3.15
J 0SS316	16 – 22 mm	13.0 mm	10	£3.84
J 0XSS316	18 – 25 mm	13.0 mm	10	£3.95
J 1ASS316	22 – 30 mm	13.0 mm	10	£4.26
J 1SS316	25 – 35 mm	13.0 mm	10	£4.37
J 1XSS316	30 – 40 mm	13.0 mm	10	£4.48
J 1MSS316	32 – 45 mm	13.0 mm	10	£4.67
J 2ASS316	35 – 50 mm	13.0 mm	10	£5.02
J 2SS316	40 – 55 mm	13.0 mm	10	£5.24
J 2XSS316	45 – 60 mm	13.0 mm	10	£5.51
J 3SS316	55 – 70 mm	13.0 mm	10	£5.85
J 3XSS316	60 – 80 mm	13.0 mm	1	£6.23
J 4SS316	70 – 90 mm	13.0 mm	1	£6.54
J 4XSS316	85 – 100 mm	13.0 mm	1	£6.92
J 5SS316	90 – 120 mm	13.0 mm	1	£7.49
J 6SS316	110 – 140 mm	13.0 mm	1	£8.06
J 6XSS316	120 – 150 mm	13.0 mm	1	£8.55
J 7SS316	135 – 165 mm	13.0 mm	1	£9.08
J 7.5SS316	158 – 190 mm	13.0 mm	1	£10.03
J 8.5SS316	184 – 216 mm	13.0 mm	1	£11.40
J 9.5SS316	210 – 242 mm	13.0 mm	1	£12.96
J 10.5SS316	235 – 267 mm	13.0 mm	1	£14.06
J 11.5SS316	260 – 292 mm	13.0 mm	1	£14.97
J 12.5SS316	286 – 318 mm	13.0 mm	1	£15.73

\* 240 hours is regarded by the British construction industry as the equivalent of a lifetime of 60 years in an urban outside environment in the UK



# MULTIBAND AND QUICK RELEASE STRAPS



## MULTIBAND CUT TO LENGTH

### SPECIFICATIONS

Material	Mild steel zinc plated
Fastening	7 mm A/F screw
Corrosion Resistance*	240 hours NSS test



### 11 MM BAND MILD STEEL ZINC PLATED

PART NUMBER	DESCRIPTION	PRICE
J MB1701	10 m banding reel	£33.96
J MB1702	30 m banding reel	£92.54
J MB1704	25 x housings & screws	£28.59
J MB1705	25 x housings & Allen screws	£33.27
J MB1706	25 x captive screws	£55.93
J MB1707	Pocket pack 3 m + 8 housings & screws	£30.62
J MB1708	Handy pack 10 m + 25 housings & screws	£65.45

## MULTIBAND

### SPECIFICATIONS

Material	304 stainless steel
Fastening	7 mm A/F screw
Corrosion Resistance*	1000 hours NSS test



### 11 MM BAND STAINLESS STEEL

PART NUMBER	DESCRIPTION	PRICE
J MB1801	10 m banding reel	£77.37
J MB1802	30 m banding reel	£211.04
J MB1803	25 x housings & screws	£64.60
J MB1804	25 x housings & Allen screws	£71.69
J MB1805	25 x captive screws	£140.00
J MB1806	Handy pack 10 m + 25 housings & screws	£148.55
J MB1807	Pocket pack 3 m + 8 housing & screws	£68.18

## SLIMLINE MULTIBAND CUT TO LENGTH

### SPECIFICATIONS

Material	304 stainless steel
Fastening	7 mm A/F screw
Corrosion Resistance*	1000 hours NSS test



### 7 MM BAND STAINLESS STEEL

PART NUMBER	DESCRIPTION	PRICE
J MB1601	25 m banding reel	£110.01
J MB1602	50 m banding reel	£189.21
J MB1603	25 x flip lock housings & screws	£66.87
J MB1607	Pocket pack 8 m + 10 flip lock housings & screws	£60.27

## QUICK RELEASE STRAPS

### SPECIFICATIONS

Material	Zinc protected mild steel
Fastening	7 mm A/F screw
Corrosion Resistance*	240 hours NSS test



### 11 MM ZINC PROTECTED MILD STEEL

PART NUMBER	CLAMPING RANGE	PRICE
J CAS050MS	35 – 50 mm	£3.08
J CAS075MS	45 – 75 mm	£3.13
J CAS100MS	50 – 100 mm	£3.23
J CAS120MS	50 – 120 mm	£3.41
J CAS150MS	50 – 150 mm	£3.62
J CAS175MS	50 – 175 mm	£3.80
J CAS200MS	50 – 200 mm	£4.00
J CAS225MS	50 – 225 mm	£4.20
J CAS250MS	50 – 250 mm	£4.39
J CAS275MS	50 – 275 mm	£4.60
J CAS300MS	50 – 300 mm	£4.78
J CAS330MS	50 – 330 mm	£4.97
J CAS355MS	50 – 355 mm	£5.17
J CAS380MS	50 – 380 mm	£5.41
J CAS405MS	50 – 405 mm	£5.82
J CAS455MS	50 – 455 mm	£6.08
J CAS505MS	50 – 505 mm	£6.47
J CAS555MS	50 – 555 mm	£6.85
J CAS605MS	50 – 605 mm	£7.37
J CAS710MS	50 – 710 mm	£8.00

## FLEXIBAND

### SPECIFICATIONS

Material	304 stainless steel
Fastening	Bend arm on buckle and tension band using Jubilee Flexiband tool
Corrosion Resistance*	1000 hours NSS test



New

### FLEXIBAND BANDING STAINLESS STEEL

PART NUMBER	DESCRIPTION	PRICE
J FB09B	9 mm	£56.20
J FB13B	13 mm	£78.70
J FB16B	16 mm	£96.33
J FB19B	19 mm	£107.62

New

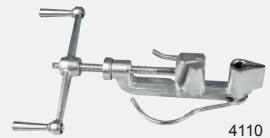
### FLEXIBAND BUCKLES STAINLESS STEEL

PART NUMBER	DESCRIPTION	PRICE
J FB09H	9 mm	£8.89
J FB13H	13 mm	£12.58
J FB16H	16 mm	£15.28
J FB19H	19 mm	£18.09

New

### FLEXIBAND TOOL STEEL

PART NUMBER	DESCRIPTION	PRICE
J FBT	Flexiband tool	£315.70



\* 240 hours is regarded by the British construction industry as the equivalent of a lifetime of 60 years in an urban outside environment in the UK

## JUBILEE® SUPERCLAMP

### FEATURES

Quality Assurance – DIN 3017

### SPECIFICATIONS

Material	Mild steel, zinc plated
Fastening	8 – 13 mm A/F Bolt
Corrosion Resistance*	168 hours NSS test



### MILD STEEL, ZINC PLATED

4110

### FEATURES

Quality Assurance – DIN 3017

### SPECIFICATIONS

Material	304 stainless steel
Fastening	8 – 13 mm A/F bolt
Corrosion Resistance*	1000 hours NSS test



### 304 STAINLESS STEEL

4110

PART NUMBER	CLAMPING RANGE	BAND WIDTH	PRICE
JSC019MS	17 – 19 mm	18 mm	£1.11
JSC022MS	20 – 22 mm	18 mm	£1.11
JSC025MS	23 – 25 mm	18 mm	£1.14
JSC028MS	26 – 28 mm	18 mm	£1.20
JSC031MS	29 – 31 mm	18 mm	£1.24
JSC035MS	32 – 35 mm	20 mm	£1.53
JSC039MS	36 – 39 mm	20 mm	£1.60
JSC043MS	40 – 43 mm	20 mm	£1.68
JSC047MS	44 – 47 mm	20 mm	£1.94
JSC051MS	48 – 51 mm	20 mm	£2.01
JSC055MS	52 – 55 mm	20 mm	£2.10
JSC059MS	56 – 59 mm	20 mm	£2.19
JSC063MS	60 – 63 mm	20 mm	£2.28
JSC067MS	64 – 67 mm	25 mm	£2.70
JSC073MS	68 – 73 mm	25 mm	£2.82
JSC079MS	74 – 79 mm	25 mm	£3.11
JSC085MS	80 – 85 mm	25 mm	£3.16
JSC091MS	86 – 91 mm	25 mm	£3.26
JSC097MS	92 – 97 mm	25 mm	£3.30
JSC103MS	98 – 103 mm	25 mm	£3.37
JSC112MS	104 – 112 mm	25 mm	£3.42
JSC121MS	113 – 121 mm	25 mm	£3.52
JSC130MS	122 – 130 mm	25 mm	£4.36
JSC139MS	131 – 139 mm	25 mm	£4.47
JSC148MS	140 – 148 mm	25 mm	£4.61
JSC161MS	149 – 161 mm	25 mm	£4.84
JSC174MS	162 – 174 mm	25 mm	£5.14
JSC187MS	175 – 187 mm	25 mm	£5.20
JSC200MS	188 – 200 mm	25 mm	£5.37
JSC213MS	201 – 213 mm	25 mm	£5.92
JSC226MS	214 – 226 mm	25 mm	£6.44
JSC239MS	227 – 239 mm	25 mm	£7.08
JSC255MS	240 – 255 mm	25 mm	£7.73
JSC265MS	253 – 265 mm	25 mm	£8.37

PART NUMBER	CLAMPING RANGE	BAND WIDTH	PRICE
JSC019SS	17 – 19 mm	18 mm	£3.18
JSC022SS	20 – 22 mm	18 mm	£3.30
JSC025SS	23 – 25 mm	18 mm	£3.44
JSC028SS	26 – 28 mm	18 mm	£3.55
JSC031SS	29 – 31 mm	18 mm	£3.67
JSC035SS	32 – 35 mm	20 mm	£3.82
JSC039SS	36 – 39 mm	20 mm	£3.84
JSC043SS	40 – 43 mm	20 mm	£3.86
JSC047SS	44 – 47 mm	20 mm	£3.90
JSC051SS	48 – 51 mm	20 mm	£3.96
JSC055SS	52 – 55 mm	20 mm	£4.08
JSC059SS	56 – 59 mm	20 mm	£4.12
JSC063SS	60 – 63 mm	20 mm	£4.16
JSC067SS	64 – 67 mm	25 mm	£8.08
JSC073SS	68 – 73 mm	25 mm	£8.24
JSC079SS	74 – 79 mm	25 mm	£8.31
JSC085SS	80 – 85 mm	25 mm	£8.40
JSC091SS	86 – 91 mm	25 mm	£8.59
JSC097SS	92 – 97 mm	25 mm	£8.67
JSC103SS	98 – 103 mm	25 mm	£8.79
JSC112SS	104 – 112 mm	25 mm	£8.90
JSC121SS	113 – 121 mm	25 mm	£9.09
JSC130SS	122 – 130 mm	25 mm	£10.87
JSC139SS	131 – 139 mm	25 mm	£11.10
JSC148SS	140 – 148 mm	25 mm	£11.26
JSC161SS	149 – 161 mm	25 mm	£11.49
JSC174SS	162 – 174 mm	25 mm	£11.77
JSC187SS	175 – 187 mm	25 mm	£13.33
JSC200SS	188 – 200 mm	25 mm	£13.77
JSC213SS	201 – 213 mm	25 mm	£14.19
JSC226SS	214 – 226 mm	25 mm	£14.83
JSC239SS	227 – 239 mm	25 mm	£15.50
JSC255SS	240 – 255 mm	25 mm	£20.24
JSC265SS	253 – 265 mm	25 mm	£16.86

\* 240 hours is regarded by the British construction industry as the equivalent of a lifetime of 60 years in an urban outside environment in the UK

## JUBILEE® DRIVERS

### CLIPDRIVER 7 MM A/F SOCKET RIGID SHAFT



4110

PART NUMBER	DESCRIPTION	PRICE
J CD95	95 mm Hexagonal clip driver	£13.70

### FLEXDRIVER 7 MM A/F SOCKET FLEXIBLE SHAFT



4110

PART NUMBER	DESCRIPTION	PRICE
J FLEXDRIVE	For use with Jubilee® clips	£20.18



## JUBILEE® SUPERCLAMP

### FEATURES

Quality Assurance – DIN 3017

### SPECIFICATIONS

Material	316 stainless steel (HNSS)
Fastening	8 – 13 mm A/F bolt
Corrosion Resistance*	2000 hours NSS test



316 STAINLESS STEEL

4110

PART NUMBER	CLAMPING RANGE	BAND WIDTH	PRICE
JSC019SS316	17 – 19 mm	18 mm	£5.72
JSC022SS316	20 – 22 mm	18 mm	£5.94
JSC025SS316	23 – 25 mm	18 mm	£6.19
JSC028SS316	26 – 28 mm	18 mm	£6.38
JSC031SS316	29 – 31 mm	18 mm	£6.61
JSC035SS316	32 – 35 mm	20 mm	£6.87
JSC039SS316	36 – 39 mm	20 mm	£6.91
JSC043SS316	40 – 43 mm	20 mm	£6.94
JSC047SS316	44 – 47 mm	20 mm	£7.29
JSC051SS316	48 – 51 mm	20 mm	£7.18
JSC055SS316	52 – 55 mm	20 mm	£7.34
JSC059SS316	56 – 59 mm	20 mm	£7.41
JSC063SS316	60 – 63 mm	20 mm	£7.53
JSC067SS316	64 – 67 mm	25 mm	£14.90
JSC073SS316	68 – 73 mm	25 mm	£15.12
JSC079SS316	74 – 79 mm	25 mm	£15.31
JSC085SS316	80 – 85 mm	25 mm	£15.41
JSC091SS316	86 – 91 mm	25 mm	£15.83
JSC097SS316	92 – 97 mm	25 mm	£15.93
JSC103SS316	98 – 103 mm	25 mm	£16.16
JSC112SS316	104 – 112 mm	25 mm	£16.36
JSC121SS316	113 – 121 mm	25 mm	£16.76
JSC130SS316	122 – 130 mm	25 mm	£19.65
JSC139SS316	131 – 139 mm	25 mm	£20.08
JSC148SS316	140 – 148 mm	25 mm	£20.74
JSC161SS316	149 – 161 mm	25 mm	£20.91
JSC174SS316	162 – 174 mm	25 mm	£21.41
JSC187SS316	175 – 187 mm	25 mm	£24.16
JSC200SS316	188 – 200 mm	25 mm	£25.11
JSC213SS316	201 – 213 mm	25 mm	£25.89
JSC226SS316	214 – 226 mm	25 mm	£27.01
JSC239SS316	227 – 239 mm	25 mm	£28.26
JSC255SS316	240 – 255 mm	25 mm	£29.50
JSC265SS316	253 – 265 mm	25 mm	£30.75

## JUBILEE® HIGH TORQUE

### FEATURES

Quality Assurance – Lloyd's Register Type Approval

### SPECIFICATIONS

Material	304 stainless steel
Fastening	8 mm A/F Screw
Corrosion Resistance*	1000 hours NSS test



304 STAINLESS STEEL

4110

PART NUMBER	CLAMPING RANGE	BAND WIDTH	PRICE
J HT035	20 – 35 mm	16 mm	£6.19
J HT040	25 – 40 mm	16 mm	£6.24
J HT045	25 – 45 mm	16 mm	£6.32
J HT050	30 – 50 mm	16 mm	£6.39
J HT070	40 – 70 mm	16 mm	£6.75
J HT080	60 – 80 mm	16 mm	£6.97
J HT095	70 – 95 mm	16 mm	£7.19
J HT100	80 – 100 mm	16 mm	£7.41
J HT120	90 – 120 mm	16 mm	£7.77
J HT140	110 – 140 mm	16 mm	£8.13
J HT160	130 – 160 mm	16 mm	£8.42
J HT180	150 – 180 mm	16 mm	£8.80
J HT200	170 – 200 mm	16 mm	£9.34
J HT220	190 – 220 mm	16 mm	£9.72
J HT240	210 – 240 mm	16 mm	£10.14
J HT260	230 – 260 mm	16 mm	£10.48
J HT280	250 – 280 mm	16 mm	£10.86
J HT300	270 – 300 mm	16 mm	£11.24
J HT320	290 – 320 mm	16 mm	£11.62
J HT340	310 – 340 mm	16 mm	£12.00
J HT360	330 – 360 mm	16 mm	£12.38
J HT380	350 – 380 mm	16 mm	£12.76
J HT400	370 – 400 mm	16 mm	£13.14
J HT420	390 – 420 mm	16 mm	£13.52
J HT440	410 – 440 mm	16 mm	£13.90
J HT460	430 – 460 mm	16 mm	£14.28
J HT480	450 – 480 mm	16 mm	£14.66
J HT500	470 – 500 mm	16 mm	£15.04
J HT520	490 – 520 mm	16 mm	£15.42

## JUBILEE® WINGSPADE CLIP

### FEATURES

Based on Jubilee® Light Range Clips and suitable for hand fitting. Jubilee® Wingspade clips are supplied with a thumb screw, allowing easy torquing using just a thumb and forefinger. Suited to fittings that may need to be removed from time to time, such as dust extraction units or domestic hoses.

### SPECIFICATIONS

Material	Mild steel, zinc protected
Fastening	Wing screw
Corrosion Resistance*	240 hours NSS test



MILD STEEL CLIP

4110

PART NUMBER	CLAMPING RANGE	PRICE
J WS012	9.5 – 12 mm	£1.98
J WS016	11 – 16 mm	£1.98
J WS020	13 – 20 mm	£1.99
J WS022	12 – 22 mm	£2.04
J WS027	16 – 27 mm	£2.06
J WS032	20 – 32 mm	£2.09
J WS040	25 – 40 mm	£2.16
J WS045	30 – 45 mm	£2.21

\* 240 hours is regarded by the British construction industry as the equivalent of a lifetime of 60 years in an urban outside environment in the UK



## FEATURES

Hi-Grip general purpose worm drive hose clips are widely respected for their quality, durability and ability to withstand a great deal of abuse. They are manufactured to exceed BS5315, which has the highest requirements of any of the international standards and tests sealing ability, clamping force and torque. Also has BSI Kitemark and NATO approval, and exceeds all operational requirements of the relevant DIN and SAE standards. Used for a wide variety of domestic, automotive and industrial applications.

All Hi-Grip hose clips have fully rounded edges to give the best possible protection to the hose.

## SPECIFICATION

All parts: mild steel, bright zinc plated and passivated and tested to EN9227.



4175

## HI-GRIP ZINC PLATED WORM DRIVE HOSE CLIPS

PART NUMBER	CLAMPING RANGE	PRICE
JCS-HGZ12RP	9.5 mm – 12 mm	£0.93
JCS-HGZ16RP	11 mm – 16 mm	£0.93
JCS-HGZ20RP	13 mm – 20 mm	£0.94
JCS-HGZ22RP	14 mm – 22 mm	£1.06
JCS-HGZ25RP	17 mm – 25 mm	£1.09
JCS-HGZ30RP	22 mm – 30 mm	£1.13
JCS-HGZ35RP	25 mm – 35 mm	£1.18
JCS-HGZ40RP	30 mm – 40 mm	£1.23
JCS-HGZ45RP	35 mm – 45 mm	£1.27
JCS-HGZ50RP	35 mm – 50 mm	£1.34
JCS-HGZ55RP	40 mm – 55 mm	£1.38
JCS-HGZ60RP	45 mm – 60 mm	£1.44
JCS-HGZ70RP	50 mm – 70 mm	£1.61
JCS-HGZ80BP	60 mm – 80 mm	£1.75
JCS-HGZ90BP	70 mm – 90 mm	£1.89
JCS-HGZ100BP	80 mm – 100 mm	£2.02
JCS-HGZ120BP	90 mm – 120 mm	£2.48
JCS-HGZ140BP	110 mm – 140 mm	£2.76
JCS-HGZ160BP	130 mm – 160 mm	£3.03

## FEATURES

Hi-Torque heavy duty hose clamps are available in 304 stainless steel, specifically designed for use with tough, wire reinforced hoses that require higher sealing pressures. Used in every application where an adjustable hose clamp is required. Quicker to fit, with no loose parts and a larger adjustment range than any other heavy duty clamp.

### Unique Straight Line Housing

A unique 'straight line' housing ensures that every thread of the screw is fully engaged with the band. This special feature, together with a high tensile band and hardened rolled thread screw, means that Hi-Torque clamps have more than twice the strength of ordinary worm drive hose clips.

## SPECIFICATION

Recommended setting torque	15 Nm (130 lb.ftn)
Band tensile strength	1150 N/mm <sup>2</sup> approx. (.75 tons/in <sup>2</sup> )
Material	All parts BS304 – EN 1.4301/1.4576



4175

## HI-TORQUE 304 S/S HOSE CLAMPS

PART NUMBER	CLAMPING RANGE	PRICE
JCS-HTM27P	20 mm – 27 mm	£8.25
JCS-HTM30P	20 mm – 30 mm	£8.25
JCS-HTM35P	20 mm – 35 mm	£8.25
JCS-HTM40P	25 mm – 40 mm	£8.25
JCS-HTM45P	25 mm – 45 mm	£8.37
JCS-HTM50P	30 mm – 50 mm	£8.49
JCS-HTM60P	40 mm – 60 mm	£8.75
JCS-HTM65P	45 mm – 65 mm	£8.87
JCS-HTM70P	50 mm – 70 mm	£8.99
JCS-HTM80P	60 mm – 80 mm	£9.24
JCS-HTM90P	70 mm – 90 mm	£9.50
JCS-HTM95P	75 mm – 95 mm	£9.62
JCS-HTM100P	80 mm – 100 mm	£9.74
JCS-HTM115P	85 mm – 115 mm	£10.11
JCS-HTM120P	90 mm – 120 mm	£10.24
JCS-HTM140P	110 mm – 140 mm	£10.75
JCS-HTM160P	130 mm – 160 mm	£11.25
JCS-HTM180P	150 mm – 180 mm	£11.73
JCS-HTM200P	170 mm – 200 mm	£12.23

## FEATURES

Specifically designed for frequently removed hoses, with dovetail locking and side lugs of the wing plate to ensure excellent sealing and longevity.

## SPECIFICATION

All parts: mild steel, bright zinc plated and passivated.



4175

## HI-GRIP ZINC PLATED WING SCREW HOSE CLIPS

PART NUMBER	CLAMPING RANGE	PRICE
JCS-WSZC12BG	9.5 mm – 12 mm	£1.88
JCS-WSZC16BG	11 mm – 16 mm	£1.88
JCS-WSZC20BG	13 mm – 20 mm	£1.89
JCS-WSZC22BG	14 mm – 22 mm	£2.02
JCS-WSZC25BG	17 mm – 25 mm	£2.05
JCS-WSZC30BG	22 mm – 30 mm	£2.10
JCS-WSZC35BG	25 mm – 35 mm	£2.15
JCS-WSZC40BG	30 mm – 40 mm	£2.20
JCS-WSZC45BG	35 mm – 45 mm	£2.25
JCS-WSZC50BG	35 mm – 50 mm	£2.32
JCS-WSZC55BG	40 mm – 55 mm	£2.36
JCS-WSZC60BG	45 mm – 60 mm	£2.44
JCS-WSZC70BG	50 mm – 70 mm	£2.62
JCS-WSZC80BG	60 mm – 80 mm	£2.81
JCS-WSZC90BG	70 mm – 90 mm	£3.00

## HI-GRIP CARTON DISPENSERS 680 CLIPS IN CARTON SIZES 12 MM – 70 MM



4175

PART NUMBER	DESCRIPTION	PRICE
JCS-DISHGZW	Empty wall display unit	£450.50
JCS-HGZCDFP	Hi-Grip zinc fill packs to suit	£685.16

## HI-TORQUE T-BAR SCREWDRIVER FOR ALL HI-GRIP ZINC PLATED



4175

PART NUMBER	FOR USE WITH	PRICE
JCS-DHT3BG	Hi-Torque clamps & multi-torque adjustable banding	£49.63

## FLEXIBLE SHAFT SCREWDRIVER FOR ALL HI-GRIP HOSE CLIPS



4175

PART NUMBER	FOR USE WITH	PRICE
JCS-DHG2BG	Flexible shaft screwdriver	£23.56

## FEATURES

Push-pull toggle clamps are unique due to having similar action to wide-opening locking pliers, but with a flanged body that can be fastened to the fixture or mould against which the work-piece or mould half is to be clamped.

Hook toggle clamps are most suitable for applications such as closing and holding closed doors, lids and moulds etc. due to the action of pulling two parts together.

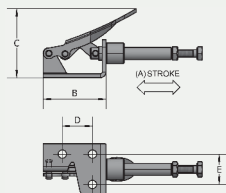
Vertical toggle clamps are the most popular type, with the arm and handle rotating in the same direction and high clamping force generated.

Horizontal toggle clamps are usually used where height restrictions prevent the use of vertical clamps, or where the action of the clamping arm and handle rotating in opposite directions is more suitable.

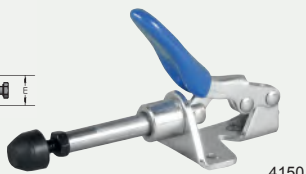
## MATERIALS

Body and handle	Zinc plated and passivated steel
Rivets	Stainless steel

## PUSH-PULL TOGGLE CLAMPS



**PUSH-PULL TOGGLE CLAMPS BASE MOUNTED**

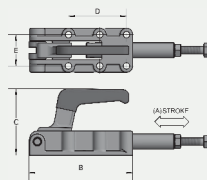


4150

PART NUMBER	HOLDING CAPACITY	DIMENSIONS MM A x B x C x D x E	PRICE
TC-CP14	45 daN	16.7 x 33 x 36 x 15.9 x 15.9	£13.92

### STAINLESS STEEL

TC-CP14SS	45 daN	16.7 x 33 x 36 x 15.9 x 15.9	£27.62
-----------	--------	------------------------------	--------

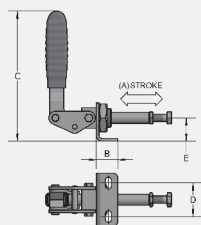


**PUSH-PULL TOGGLE CLAMPS BASE MOUNTED**



4150

PART NUMBER	HOLDING CAPACITY	DIMENSIONS MM A x B x C x D x E	PRICE
TC-CP75	2500 daN	75 x 197 x 111 x 90 x 54	£118.56
TC-CP85	1200 daN	52 x 136 x 88 x 76 x 41	£72.18
TC-CP95	600 daN	32 x 91 x 66 x 36.5 x 33.4	£44.51



**PUSH-PULL TOGGLE CLAMPS NOSE MOUNTED**

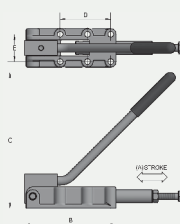


4150

PART NUMBER	HOLDING CAPACITY	DIMENSIONS MM A x B x C x D x E	PRICE
TC-CP15	100 daN	21 x 30 x 96 x 18 x 26	£26.24
TC-CP16	200 daN	40 x 23 x 140 x 36 x 25	£29.44

### STAINLESS STEEL

TC-CP15SS	100 daN	21 x 30 x 96 x 18 x 26	£52.37
TC-CP16SS	200 daN	40 x 23 x 140 x 36 x 25	£56.18

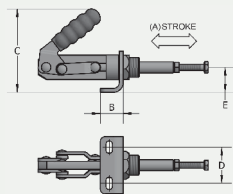


**PUSH-PULL TOGGLE CLAMPS BASE MOUNTED**



4150

PART NUMBER	HOLDING CAPACITY	DIMENSIONS MM A x B x C x D x E	PRICE
TC-CP75/90	2500 daN	75 x 197 x 282 x 90 x 54	£149.94
TC-CP85/90	1200 daN	52 x 136 x 205 x 76 x 41	£88.26
TC-CP95/90	600 daN	32 x 91 x 129 x 36.5 x 33.4	£57.66



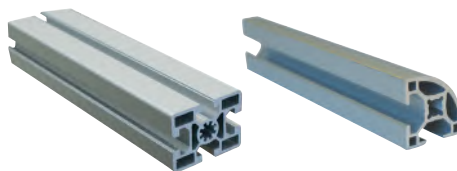
**PUSH-PULL TOGGLE CLAMP NOSE MOUNTED**



4150

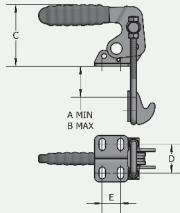
PART NUMBER	HOLDING CAPACITY	DIMENSIONS MM A x B x C x D x E	PRICE
TC-CP17	250 daN	32 x 23 x 83 x 36 x 25	£41.04

You may also need ... **Aluminium profiles**



... on pages 862 – 867, section 16

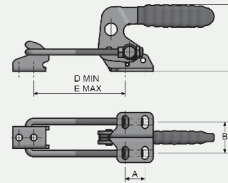
LATCH TOGGLE CLAMPS



4150

LATCH TOGGLE CLAMPS VERTICAL

PART NUMBER	HOLDING CAPACITY	DIMENSIONS MM A x B x C x D x E	PRICE
TC-HC22V	210 daN	5 x 28 x 41 x 24 x 13	£19.44
TC-HC24V	410 daN	7 x 35 x 64 x 29.5 x 19	£35.52
TC-HC27V	710 daN	9 x 45 x 87 x 41.5 x 32	£45.44



4150

LATCH TOGGLE CLAMPS HORIZONTAL

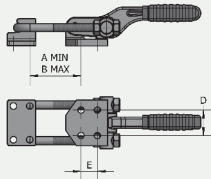
PART NUMBER	HOLDING CAPACITY	DIMENSIONS MM A x B x C x D x E	PRICE
TC-HC22H	210 daN	36 x 70 x 41 x 24 x 13	£19.44
TC-HC24H	410 daN	47 x 88 x 64 x 29.5 x 19	£35.52
TC-HC27H	710 daN	65 x 120 x 87 x 41.5 x 32	£45.44

STAINLESS STEEL

TC-HC22VSS	210 daN	5 x 28 x 41 x 24 x 13	£42.38
TC-HC24VSS	410 daN	7 x 35 x 64 x 29.5 x 19	£65.63
TC-HC27VSS	710 daN	9 x 45 x 87 x 41.5 x 32	£83.25

STAINLESS STEEL

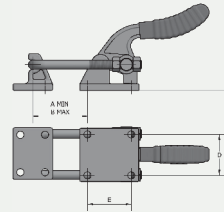
TC-HC22HSS	210 daN	36 x 70 x 41 x 24 x 13	£42.38
TC-HC24HSS	410 daN	47 x 88 x 64 x 29.5 x 19	£65.63
TC-HC27HSS	710 daN	65 x 120 x 87 x 41.5 x 32	£83.25



4150

LATCH TOGGLE CLAMPS HEAVY DUTY

PART NUMBER	HOLDING CAPACITY	DIMENSIONS MM A x B x C x D x E	PRICE
TC-HC14	500 daN	33 x 62 x 40 x 25 x 16	£36.48

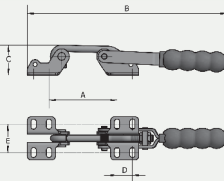


4150

LATCH TOGGLE CLAMPS HEAVY DUTY

PART NUMBER	HOLDING CAPACITY	DIMENSIONS MM A x B x C x D x E	PRICE
TC-HC19	3730 daN	47 x 82 x 128 x 60 x 64	£104.67

HOOK TOGGLE CLAMPS



4150

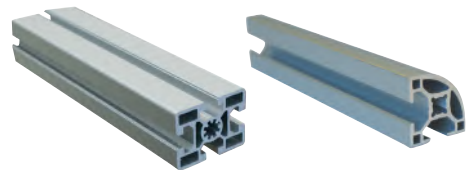
HOOK TOGGLE CLAMPS

PART NUMBER	HOLDING CAPACITY	DIMENSIONS MM A x B x C x D x E	PRICE
TC-HC01	190 daN	63 x 178 x 27 x 13 x 26	£23.28
TC-HC02	395 daN	84 x 247 x 37 x 19 x 35	£30.82
TC-HC03	680 daN	112 x 325 x 45 x 32 x 51	£44.08

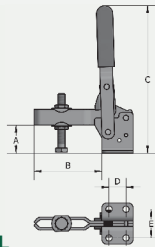
STAINLESS STEEL

TC-HC01SS	190 daN	63 x 178 x 27 x 13 x 26	£31.94
TC-HC02SS	395 daN	84 x 247 x 37 x 19 x 35	£40.74
TC-HC03SS	680 daN	112 x 325 x 45 x 32 x 51	£67.50

You may also need ... Aluminium profiles



... on pages 862 – 867, section 16

**VERTICAL TOGGLE CLAMPS**


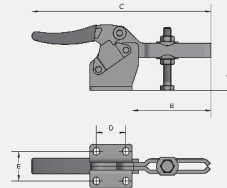
4150

**VERTICAL TOGGLE CLAMPS  
ADJUSTABLE BAR**

PART NUMBER	HOLDING CAPACITY	DIMENSIONS MM A x B x C x D x E	PRICE
TC-MG82UB	71 daN	16 x 37 x 89 x 16 x 24	£14.88
TC-MG7UB	113 daN	23 x 40 x 125 x 12.5 x 27	£17.01
TC-MG85UB	245 daN	32 x 76 x 174 x 18 x 32	£21.44
TC-MG5UB	360 daN	45 x 102 x 213 x 32 x 45	£30.38

**STAINLESS STEEL**

TC-MG82UBSS	71 daN	16 x 37 x 89 x 16 x 24	£23.92
TC-MG7UBSS	113 daN	23 x 40 x 125 x 12.5 x 27	£31.68
TC-MG85UBSS	245 daN	32 x 76 x 174 x 18 x 32	£39.62

**HORIZONTAL TOGGLE CLAMPS**


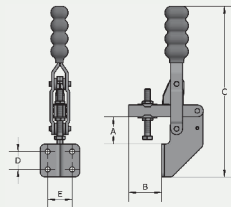
4150

**HORIZONTAL TOGGLE CLAMPS  
ADJUSTABLE BAR**

PART NUMBER	HOLDING CAPACITY	DIMENSIONS MM A x B x C x D x E	PRICE
TC-MH1UB	60 daN	15 x 26 x 79 x 13.75 x 16	£12.88
TC-MH2UB	80 daN	20 x 36 x 118 x 13.25 x 19	£15.87
TC-MH4UB	155 daN	26 x 72 x 183 x 26 x 25	£20.38
TC-MH6UB	255 daN	32 x 90 x 219 x 26 x 29	£26.82
TC-MH8UB	480 daN	44 x 108 x 248 x 41 x 41	£37.44

**STAINLESS STEEL**

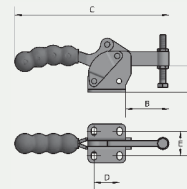
TC-MH1UBSS	60 daN	15 x 26 x 79 x 13.75 x 16	£19.66
TC-MH2UBSS	80 daN	20 x 36 x 118 x 13.25 x 19	£28.19
TC-MH4UBSS	155 daN	26 x 72 x 183 x 26 x 25	£34.19



4150

**VERTICAL TOGGLE CLAMPS  
FRONT MOUNTED –  
ADJUSTABLE BAR**

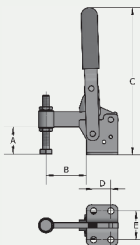
PART NUMBER	HOLDING CAPACITY	DIMENSIONS MM A x B x C x D x E	PRICE
TC-MG83UF	113 daN	15 x 30.5 x 127 x 14 x 17.5	£16.82
TC-MG84UF	230 daN	29 x 35 x 182 x 19 x 26	£19.68
TC-MG86UF	290 daN	30 x 97 x 212 x 35 x 35	£29.84



4150

**HORIZONTAL TOGGLE CLAMPS  
FIXED BAR**

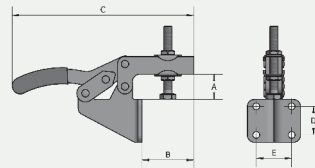
PART NUMBER	HOLDING CAPACITY	DIMENSIONS MM A x B x C x D x E	PRICE
TC-MH1SB	60 daN	15 x 20.5 x 77.25 x 13.75 x 16	£12.88
TC-MH2SB	80 daN	20 x 30 x 116 x 13.25 x 19	£15.87
TC-MH4SB	155 daN	26 x 38 x 153 x 26 x 25	£20.38



4150

**VERTICAL TOGGLE CLAMPS  
BASE MOUNTED –  
FIXED BAR**

PART NUMBER	HOLDING CAPACITY	DIMENSIONS MM A x B x C x D x E	PRICE
TC-MG7SB	113 daN	23 x 35 x 125 x 12.5 x 27	£17.01
TC-MG83SB	113 daN	22 x 32 x 105 x 15 x 21	£15.76
TC-MG85SB	245 daN	32 x 45 x 174 x 18 x 32	£21.44
TC-MG87SB	600 daN	48 x 75 x 227 x 32 x 45	£42.72



4150

**HORIZONTAL TOGGLE CLAMPS  
FRONT MOUNTED –  
ADJUSTABLE BAR**

PART NUMBER	HOLDING CAPACITY	DIMENSIONS MM A x B x C x D x E	PRICE
TC-MH3UF	80 daN	15 x 34 x 118 x 15 x 18	£16.64
TC-MH5UF	180 daN	18.5 x 38 x 133 x 21 x 26	£22.93
TC-MH7UF	315 daN	27 x 60 x 184 x 24 x 29	£31.95



### COBRA FEATURES

- One piece hose clips
- Low profile



4130

### COBRA EASY FIT STAINLESS STEEL CLIPS

10 PACK QUANTITY  
PRICE PER CLIP

PART NUMBER	CLAMPING RANGE	BAND WIDTH	PRICE
N-COB07.5	8.0 – 9.0 mm	7 mm	£0.75
N-COB08.0	8.5 – 9.5 mm	7 mm	£0.75
N-COB08.5	9.0 – 10.0 mm	7 mm	£0.75
N-COB09.0	9.5 – 10.5 mm	7 mm	£0.75
N-COB09.5	10.0 – 11.0 mm	7 mm	£0.75
N-COB10.0	10.5 – 11.5 mm	7 mm	£0.75
N-COB10.5	11.0 – 12.0 mm	7 mm	£0.77
N-COB11.0	11.5 – 12.5 mm	7 mm	£0.75
N-COB11.5	12.0 – 13.0 mm	7 mm	£0.77
N-COB12	12.5 – 14.0 mm	8 mm	£0.80
N-COB13	13.5 – 15.0 mm	8 mm	£0.80
N-COB14	14.5 – 16.0 mm	8 mm	£0.80
N-COB15	15.5 – 17.0 mm	8 mm	£0.80
N-COB16	16.5 – 18.0 mm	8 mm	£0.82
N-COB17	17.5 – 19.0 mm	8 mm	£0.82
N-COB18	18.5 – 20.0 mm	8 mm	£0.82
N-COB19	19.5 – 21.0 mm	8 mm	£0.82

### 'P' CLIP FEATURES

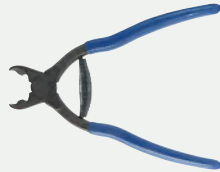
- In accordance with DIN3016
- Zinc plated steel with EPDM sleeve



4130

### PIPE RETAINING CLIPS PRICE PER CLIP

PART NUMBER	BAND WIDTH	PIPE OD	PRICE
N-RSGU-1/06	15 mm	6 mm	£1.00
N-RSGU-1/08	15 mm	8 mm	£1.00
N-RSGU-1/10	15 mm	10 mm	£1.00
N-RSGU-1/12	15 mm	12 mm	£1.00
N-RSGU-1/14	15 mm	14 mm	£1.00
N-RSGU-1/16	15 mm	16 mm	£1.00
N-RSGU-1/18	15 mm	18 mm	£1.00
N-RSGU-1/20	15 mm	20 mm	£1.00
N-RSGU-1/22	15 mm	22 mm	£1.14
N-RSGU-1/25	15 mm	25 mm	£1.14
N-RSGU-1/28	15 mm	28 mm	£1.14
N-RSGU-1/30	15 mm	30 mm	£1.14
N-RSGU-1/32	15 mm	32 mm	£1.44
N-RSGU-1/35	15 mm	35 mm	£1.44



4130

### ACCESSORIES

FOR USE WITH COBRA CLIPS

PART NUMBER	DESCRIPTION	PRICE
N-COBRA-HT	Tightening tool	£115.72

### SNP FEATURES

- Resistant to most chemicals, particularly oils, petrol and alkalis
- Excellent electrical insulation
- Tooling available



4130

### BLACK ACETAL CLIPS PRICE PER CLIP

PART NUMBER	CLAMPING RANGE	PRICE
N-HERBIE/A	5.60 – 6.50 mm	£0.56
N-HERBIE/B	7.90 – 9.20 mm	£0.57
N-HERBIE/BB	9.20 – 10.30 mm	£0.58
N-HERBIE/C	10.20 – 11.80 mm	£0.58
N-HERBIE/CC	11.10 – 12.90 mm	£0.59
N-HERBIE/D	12.00 – 13.80 mm	£0.62
N-HERBIE/E	13.10 – 15.10 mm	£0.65
N-HERBIE/F	15.00 – 17.10 mm	£0.68
N-HERBIE/G	16.90 – 19.10 mm	£0.71
N-HERBIE/H	18.10 – 20.60 mm	£0.74
N-HERBIE/J	22.20 – 24.90 mm	£0.76
N-HERBIE/K	23.10 – 26.10 mm	£0.80
N-HERBIE/L	24.50 – 27.60 mm	£0.87
N-HERBIE/M	26.50 – 29.50 mm	£0.99
N-HERBIE/N	28.80 – 32.30 mm	£1.10

### BREEZE HI-TORQUE CLIPS

- Hi-Torque heavy duty clamps with liner
- 304 (W4) steel band



4130

### BREEZE HI-TORQUE 304 STEEL CLAMPS PRICE PER CLAMP

PART NUMBER	CLAMPING RANGE	BAND WIDTH	PRICE
N-HTM175LB	25 – 45 mm	16 mm	£11.02
N-HTM200LB	32 – 54 mm	16 mm	£6.12
N-HTM250LB	45 – 67 mm	16 mm	£6.39
N-HTM300LB	57 – 79 mm	16 mm	£6.68
N-HTM350LB	70 – 92 mm	16 mm	£7.00
N-HTM400LB	83 – 105 mm	16 mm	£7.30
N-HTM450LB	95 – 118 mm	16 mm	£7.53
N-HTM500LB	108 – 130 mm	16 mm	£7.96
N-HTM550LB	121 – 143 mm	16 mm	£8.22
N-HTM600LB	133 – 156 mm	16 mm	£8.52
N-HTM650LB	146 – 168 mm	16 mm	£8.95
N-HTM700LB	159 – 181 mm	16 mm	£9.26



**BRASS SCREW BRACKET**

5340

PART NUMBER	PIPE SIZE	PRICE
AL-BSB-15	15 mm	£5.45
AL-BSB-22	22 mm	£6.37
AL-BSB-28	28 mm	£7.39
AL-BSB-35	35 mm	£18.26
AL-BSB-42	42 mm	£19.36
AL-BSB-54	54 mm	£25.90



**BRASS SINGLE RING BRACKET**  
M10

5340

PART NUMBER	PIPE SIZE	THREAD	PRICE
AL-BSPR-15	15 mm	M10	£9.09
AL-BSPR-22	22 mm	M10	£7.57
AL-BSPR-28	28 mm	M10	£8.07
AL-BSPR-35	35 mm	M10	£9.43
AL-BSPR-42	42 mm	M10	£14.27
AL-BSPR-54	54 mm	M10	£16.05



**BRASS BASE PLATE**  
FEMALE

5340

PART NUMBER	THREAD	PRICE
AL-BBPFM10	M10	£4.20



**BRASS BASE PLATE**  
MALE

5340

PART NUMBER	THREAD	PRICE
AL-BBPM10	M10	£6.54



**BRASS FERRULES FOR AIR**  
FOR MEDIUM WEIGHT HOSE

3560

PART NUMBER	FERRULE ID	D2	LENGTH	PRICE
GWBFM562	14.0 mm	11.0 mm	1" / 25.4 mm	£0.99
GWBFM593	15.0 mm	11.0 mm	1" / 25.4 mm	£1.04
GWBFM625	15.8 mm	11.0 mm	1" / 25.4 mm	£1.10
GWBFM656	16.6 mm	11.0 mm	1" / 25.4 mm	£1.16
GWBFM687	17.4 mm	12.7 mm	1" / 25.4 mm	£1.16
GWBFM718	18.2 mm	16.0 mm	1" / 25.4 mm	£1.28
GWBFM750	19.0 mm	16.0 mm	1" / 25.4 mm	£1.28
GWBFM750B	19.0 mm	12.7 mm	1" / 25.4 mm	£1.57
GWBFM781	19.8 mm	16.0 mm	1" / 25.4 mm	£1.62
GWBFM781B	19.8 mm	12.7 mm	1" / 25.4 mm	£1.74

**FOR LIGHT WEIGHT HOSE**

PART NUMBER	FERRULE ID	D2	LENGTH	PRICE
GWBFL410	10.4 mm	6.7 mm	1/2" / 12.7 mm	£0.58
GWBFL500	12.7 mm	8.7 mm	1/2" / 12.7 mm	£0.64
GWBFL525	13.3 mm	8.7 mm	1/2" / 12.7 mm	£0.58
GWBFL600	15.2 mm	12.7 mm	1/2" / 12.7 mm	£0.70



**BRASS FERRULES FOR FLUID**  
FOR MEDIUM WEIGHT HOSE

3560

PART NUMBER	FERRULE ID	D2	LENGTH	PRICE
GWBF850	21.6 mm	15.9 mm	14.4 mm	£1.04
GWBF875	22.2 mm	17.5 mm	21.4 mm	£1.39
GWBF900	22.9 mm	17.5 mm	21.4 mm	£1.45
GWBFMW1275	32.4 mm	25.4 mm	22.2 mm	£5.34



**BRASS COMPRESSION RINGS**  
ALL SIZES IN MM

3560

PART NUMBER	ID	OD	WIDTH	WALL	PRICE
FCR 12X15	12.00	15.0	12.7	1.50	£2.09
FCR 1/4R2A	17.80	20.9	11.2	1.55	£2.52
FCR 3/81WB	21.26	24.4	11.2	1.57	£2.77
FCR 3/82WB	22.78	26.0	11.3	1.61	£2.89
FBR 75/85	19.66	22.8	11.3	1.57	£2.58
FCR 1/21WB	25.78	29.0	11.2	1.61	£3.50
FCR 1/2R1A	23.65	26.8	11.4	1.57	£3.01
FCR 5/82WB	30.48	33.5	11.2	1.51	£4.15
FCR 3/41WB	32.76	35.8	11.5	1.52	£4.24
FCR 7/8R2A	35.56	38.7	11.2	1.57	£4.61
FCR 1R1A	38.86	42.2	11.2	1.67	£4.09

You may also need ...

**Mikalor replair kits**



... on page 920, section 17

## 250 PIPE CLIP FEATURES

- EPDM rubber insulation compliant with DIN 4109
- 2 Screw pipe clip with M8/M10 combi boss
- Steel, electrogalvanised
- M6 multifunction screw

New Additions

## NVENT CADDY MACROFIX 250 M8/M10 DUAL THREAD 2 SCREW PIPE CLIP



4132

PART NUMBER	PIPE OD	NOMINAL BORE	PRICE
ER586001	11 – 15 mm	1/4"	£1.70
ER586002	15 – 19 mm	3/8"	£1.77
ER586003	19 – 25 mm	1/2"	£1.80
ER586004	25 – 31 mm	3/4"	£1.86
ER586005	31 – 37 mm	1"	£1.89
ER586006	37 – 44 mm	1 1/4"	£2.15
ER586007	44 – 50 mm	1 1/2"	£2.39
ER586008	50 – 58 mm	–	£2.49
ER586009	58 – 68 mm	2"	£3.06
ER586010	68 – 78 mm	2 1/2"	£3.50
ER586011	78 – 88 mm	–	£3.86
ER586012	88 – 98 mm	3"	£3.98
ER586013	98 – 108 mm	3 1/2"	£4.50
ER586014	108 – 118 mm	4"	£4.97
ER586015	118 – 128 mm	–	£5.46
ER586016	128 – 138 mm	–	£5.89
ER586017	138 – 148 mm	5"	£6.50
ER586018	150 – 160 mm	–	£6.80
ER586019	160 – 170 mm	6"	£11.84
ER586020	190 – 200 mm	–	£14.30
ER586021	205 – 215 mm	–	£15.00
ER586022	215 – 225 mm	8"	£15.35
ER586023	239 – 250 mm	–	£15.65
ER586024	265 – 275 mm	10"	£16.00
ER586025	309 – 319 mm	–	£16.35

New Additions

## NVENT CADDY MACROFIX NI 250 M8/M10 DUAL THREAD 2 SCREW PIPE CLIP



4132

PART NUMBER	PIPE OD	NOMINAL BORE	PRICE
ER586101	15 – 19 mm	3/8"	£1.45
ER586102	19 – 23 mm	1/2"	£1.48
ER586103	23 – 29 mm	3/4"	£1.51
ER586104	29 – 35 mm	1"	£1.57
ER586105	35 – 41 mm	–	£1.64
ER586106	41 – 48 mm	1 1/4"	£1.70
ER586107	48 – 54 mm	1 1/2"	£1.86
ER586108	54 – 62 mm	2"	£2.15
ER586109	62 – 72 mm	–	£2.40
ER586110	73 – 83 mm	2 1/2"	£2.93
ER586111	83 – 93 mm	3"	£3.24
ER586112	93 – 103 mm	3 1/2"	£3.57
ER586113	103 – 113 mm	–	£3.98
ER586114	113 – 123 mm	4"	£4.24
ER586115	123 – 133 mm	–	£4.97
ER586116	133 – 143 mm	5"	£5.15
ER586117	143 – 153 mm	–	£5.75
ER586118	155 – 165 mm	–	£6.05
ER586119	165 – 175 mm	6"	£6.30
ER586120	195 – 205 mm	–	£11.00
ER586121	210 – 220 mm	8"	£12.45
ER586122	220 – 230 mm	–	£12.90
ER586123	244 – 255 mm	–	£13.40
ER586124	270 – 280 mm	10"	£13.90
ER586125	314 – 324 mm	12"	£14.60

## MACROFIX PLUS LF 430 PIPE CLIP FEATURES

- EPDM rubber insulation compliant with DIN 4109
- 2 screw low friction pipe clip with M10 boss

New Additions

## NVENT CADDY MACROFIX PLUS LF 430 2 SCREW PIPE CLIP



4132

PART NUMBER	PIPE OD	NOMINAL BORE	PRICE
ER595035	16 mm	–	£3.57
ER595036	20 mm	1/2"	£3.75
ER595037	25 mm	3/4"	£3.90
ER595038	32 mm	1"	£4.16
ER595039	40 mm	1 1/4"	£4.62
ER595040	50 mm	1 1/2"	£5.63
ER595042	63 mm	2"	£6.13
ER595043	75 mm	2 1/2"	£6.83
ER595044	90 mm	3"	£7.50
ER595045	110 mm	4"	£10.34
ER595046	125 mm	–	£9.36
ER595048	160 mm	–	£14.42

## 243 PIPE CLIP FEATURES

- EPDM rubber insulation compliant with DIN 4109
- One piece low friction clip with M8/M10 combi boss
- Steel, electrogalvanised
- M6 multifunction screw

## NVENT CADDY SUPERFIX 243 M8/M10 DUAL THREAD 1 PIECE PIPE CLIP



4132

PART NUMBER	PIPE OD	NOMINAL BORE	PRICE
ER400063	12 – 14 mm	1/4"	£1.62
ER400064	15 – 19 mm	3/8"	£1.67
ER400065	21 – 23 mm	1/2"	£1.82
ER400066	26 – 28 mm	3/4"	£1.87
ER400067	32 – 35 mm	1"	£2.17
ER400068	40 – 43 mm	1 1/4"	£2.27
ER400069	44 – 49 mm	–	£2.32
ER400070	48 – 52 mm	1 1/2"	£2.78
ER589350	54 – 58 mm	–	£2.93
ER400071	57 – 61 mm	2"	£3.03
ER400072	63 – 67 mm	–	£3.13
ER400073	70 – 73 mm	–	£3.53
ER400074	74 – 80 mm	2 1/2"	£3.84
ER400075	83 – 91 mm	3"	£4.80
ER400076	101 – 106 mm	–	£6.11
ER400077	108 – 114 mm	4"	£6.41

## 300M UNIVERSAL BEAM CLAMP FEATURES

- Fix to beams without welding or drilling
- VdS and FM approved
- Steel, electrogalvanised

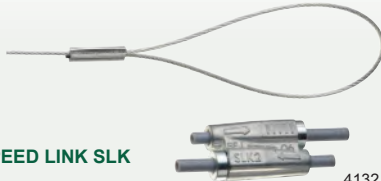


4132

## 300M UNIVERSAL BEAM CLAMP

PART NUMBER	CLAMP WIDTH	HOLE Ø DIA.	PRICE
ER389500	18 mm	9 mm	£4.26
ER389510	20 mm	11 mm	£4.06

See page 894 for threaded bar



**NVENT CADDY SPEED LINK SLK WITH LOOP**

4132

PART NUMBER	WIRE	LENGTH	PRICE
ER196604	2 mm	1 m	£12.79
ER196543	2 mm	2 m	£14.65
ER196544	2 mm	3 m	£16.51
ER196545	2 mm	5 m	£20.36
ER196605	2 mm	7 m	£31.04
ER196606	2 mm	10 m	£30.03

### FEATURES

- Push/pull keyless release allows easy adjustments
- Suitable for 1.5 mm and 2 mm nVent CADDY® speed link cable
- Low profile locking device minimises visual impact
- Cable spread of 90 degrees allows positioning the device closer to the load
- Keyless release tubes are easy to operate while wearing gloves
- Double-sided locking mechanism enables simple height adjustment

### SPECIFICATIONS

Materials Steel, polypropylene and zinc alloy

**SPEED LINK SLK LOCKING DEVICE 1.5 – 2 MM WIRE ROPE DIAMETER**



4132

PART NUMBER	HEIGHT	WIDTH	THICKNESS	ANGLE	PRICE
ER196600	55 mm	19 mm	12.5 mm	90° max	£7.28

### FEATURES

- Push/pull keyless release allows easy adjustments
- Low profile locking device minimises visual impact
- Cable spread of 90 degrees allows positioning the device closer to the load
- Keyless release tubes are easy to operate while wearing gloves
- Double sided locking mechanism enables simple height adjustment

### SPECIFICATIONS

Materials Steel, polypropylene and zinc alloy

**SPEED LINK SLK LOCKING DEVICE 3 MM WIRE ROPE DIAMETER**



4132

PART NUMBER	HEIGHT	WIDTH	ANGLE	PRICE
ER196730	62 mm	24 mm	90° max	£7.68

**STEEL EYE SCREW ELECTRO-GALVANISED**



4132

PART NUMBER	SCREW DIAMETER	SCREW LENGTH	HOLE SIZE	LENGTH	PRICE
ER195854	M6	20 mm	7.2 mm	37.5 mm	£0.97
ER195856	M8	25 mm	8.5 mm	50.0 mm	£1.13
ER195858	H6	32 mm	8.8 mm	60.0 mm	£0.76

New



**NVENT CADDY SPEED LINK SLK WITH WEDGE ANCHOR**

4134

PART NUMBER	WIRE ROPE DIA.	WIRE ROPE LENGTH	STATIC LOAD	PRICE
ERSLK15L2WA6	1.5 m	2 m	195 N	£19.95
ERSLK15L5WA6	1.5 m	5 m	195 N	£25.20
ERSLK2L3WA6	2.0 m	3 m	440 N	£24.60
ERSLK2L5WA6	2.0 m	5 m	44 0N	£31.00
ERSLK3L5WA6	3.0 m	5 m	890 N	£37.65

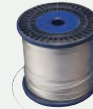
New



**NVENT CADDY SPEED LINK SLK WITH NAIL GUN BRACKET**

4134

PART NUMBER	WIRE ROPE DIA.	WIRE ROPE LENGTH	STATIC LOAD	PRICE
ERSLK15L2GBSF	1.5 m	2 m	195 N	£30.40
ERSLK15L3GBSF	1.5 m	3 m	195 N	£16.80
ERSLK2L2GBSF	2.0 m	2 m	440 N	£17.60
ERSLK2L3GBSF	2.0 m	3 m	440 N	£18.90



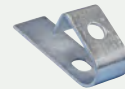
**NVENT CADDY SPEED LINK WIRE SPOOL**

4134

PART NUMBER	DIA	LENGTH	LOAD (N)	PRICE
ER196001	1.5 mm	300 m	195	£137.79
ER196002	2.0 mm	300 m	440	£148.01
ER196003	3.0 mm	300 m	880	£251.94

### LOCKING DEVICE FOR WIRE

ER196008	1.5 mm	N/A	N/A	£7.13
----------	--------	-----	-----	-------



**NVENT CADDY PURLIN CLAMP D1 STRAIGHT**

4134

PART NUMBER	OD	LOAD (N)	PRICE
ER336280	11 mm	120	£2.68



**NVENT CADDY SPEEDKLIP SELF-CLOSING PIPE CLAMP**

4134

PART NUMBER	PIPE OD (G)	LOAD (N)	PRICE
ER389017	8 mm	135	£0.74
ER389018	10 mm	150	£0.77
ER389001	12 mm	160	£0.94
ER389002	15 mm	175	£0.95
ER389003	17 mm	190	£0.99
ER389004	20 mm	200	£1.37
ER389005	22 mm	215	£1.42
ER389006	25 mm	240	£1.72
ER389007	28 mm	260	£2.06
ER389008	32 mm	300	£3.13
ER389009	36 mm	320	£3.13
ER389011	40 mm	360	£4.93
ER389013	51 mm	400	£6.90