

# JOHN GUEST SPEEDFIT, AIR PRODUCTS & PLUMBING

New



622

**SHARKBITE**  
Technical Information for Small  
to Large Commercial & Industrial  
Applications

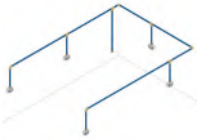
New



623

**SHARKBITE**  
Air & Pneumatic Brass Fittings,  
Pipe & Accessories

New



626

**SHARKBITE**  
Assembly Kits



627

**JOHN GUEST**  
Technical Information  
for Small to Mid-Sized  
Commercial Applications



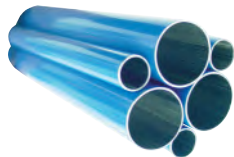
628

**JOHN GUEST**  
Air Ring Main Fittings



629

**JOHN GUEST**  
Brass Compressed Air Fittings



630

**JOHN GUEST**  
Air Ring Main Pipe & Accessories



632

**JOHN GUEST**  
Air & Pneumatic Metric Fittings

# JOHN GUEST SPEEDFIT, AIR PRODUCTS & PLUMBING



**637**

**JOHN GUEST  
Air & Pneumatic  
Imperial Fittings**



**639**

**JOHN GUEST  
Banjo Flow Controls**



**640**

**JOHN GUEST  
Technical Information for Speedfit  
– Plumbing & Heating Systems**



**641**

**JOHN GUEST  
Plumbing & Heating System  
Suitable for Central Heating  
Systems**



**643**

**JOHN GUEST  
Valves**



**645**

**JOHN GUEST  
Flexi Hose & Barrier Pipe**



**646**

**JOHN GUEST  
LLDPE Tube**

**New**



**648**

**Selecting the Right Pipe**

## CREATE AN EFFICIENT HIGH PERFORMANCE SOLUTION

The SharkBite Air & Pneumatics push-fit range provides fast, simple and reliable pipe connections. Available in 10 to 54 mm sizes, the robust brass-body fittings can withstand high pressure and a range of system requirements, making it ideal for small to large commercial and industrial applications. Suitable for use from the compressor to the point of use, we offer a wide range of fittings and anodised aluminium pipe, including a 45° elbow for improved air flow.

Using a simple push-fit action, pipes are instantly joined without the need for tools, silicon, hot works, solder or glue. Fittings can also be disconnected with a secure demounting tool, making system extensions and modifications quick and easy.

Designed to securely grip our range of anodised aluminium pipe, SharkBite is also compatible with powder coated aluminium, copper, PEXa and nylon pipes.

## FEATURES

- Engineered brass body
- Push-fit connection ends
- Tamperproof secure demounting tool
- Nitrile O-Ring and stainless steel grab ring
- Suitable for air and vacuum applications up to 20 bar

## BENEFITS

- Reliable leakproof solution that withstands high pressure
- Instant, tool-free, push-fit connection with no hot works, silicon, solvent or glue
- Corrosion-free solution that extends equipment lifecycle and reduces maintenance
- Quick and easy system reconfiguration and extension, with minimal downtime
- Lightweight and easy to handle material
- A versatile solution that connects to metal or plastic pipe

## AIR SYSTEM CONFIGURATION

The SharkBite Air & Pneumatics system offers rapid assembly from the compressor to air line, through to the complete ring main and take off points.

## SPECIFICATIONS

### MATERIALS

Bodies	Brass
O-rings	Nitrile
Cartridge ring	304 Stainless steel
Grab ring	316 Stainless steel

### TUBE TOLERANCES

Size	12 mm – 28 mm OD
Tolerance	-0.10 mm to +0.05 mm OD

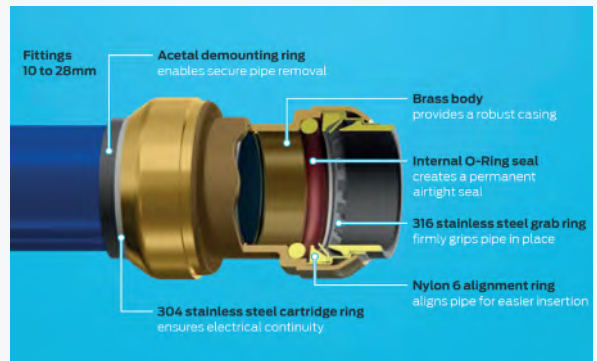
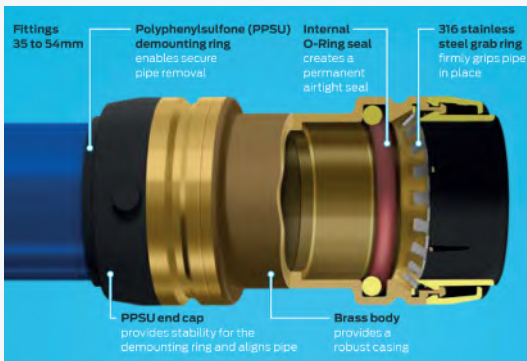
*For further technical details*

*... see pages 648 – 649, section 12*

AN RWC BRAND



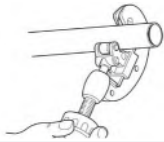
## INSIDE SHARKBITE TECHNOLOGY



## MAKING A CONNECTION

### CONNECTING PUSH-FIT

#### Cutting the pipe



Cut the pipe square using a rotary pipe cutter and then deburr using a SharkBite Depth/Deburring tool. There should be no burrs or sharp edges on the pipe end as this can damage the O-Ring during pipe insertion.

#### Measure the depth



Using the appropriate Depth Marker Demounting Clip or tape measure, mark the insertion depth onto the pipe.

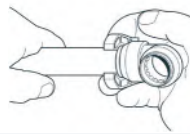
#### Making the connection



Align the pipe squarely with the fitting de-mounting ring and push the pipe into the fitting with a slight twist until the pipe reaches the pipe stop. If using plastic pipe, use a liner if specified by the pipe manufacturer.

### DEMOUNTING PUSH-FIT

#### Demounting 10-28 mm with clip



Holding the fitting in the palm of the hand, snap the demounting clip over the pipe, with the SharkBite logo facing away from the fitting. Slide the clip up to the demounting ring and press firmly on the two 'finger pads', while simultaneously twisting and pulling the pipe to release.

#### Demounting 10-28 mm with tongs



Position the tongs over the fitting and pipe with the SharkBite logo facing away from the fitting. Squeeze the tongs together, while gripping the pipe in the other hand, simultaneously twist and pull the pipe to remove, if necessary. Use the thumb as a lever to assist release.

#### Demounting 35-54 mm UXL



Snap the demounting clip over the pipe and locate the clip slots over the two studs in the end cap. Rotate the clip clockwise by 10° until it locks, then twist and pull the pipe from the fitting.

**Note:** SharkBite fittings utilise a PTFE coated O-Ring. This coating is semi-permanent and multiple pipe insertions/de-mountings will remove this coating, making pipe insertion harder.

### STANDARD FITTINGS

New



#### STRAIGHT COUPLING

2150

PART NUMBER	TUBE OD	PRICE
JGSBA0110	10 mm	£9.41
JGSBA0115	15 mm	£9.97
JGSBA0122	22 mm	£13.75
JGSBA0128	28 mm	£21.12

New



#### REDUCING COUPLING

2150

PART NUMBER	TUBE OD	TUBE OD	PRICE
JGSBA011510	15 mm	10 mm	£14.14
JGSBA012215	22 mm	15 mm	£18.46
JGSBA012822	28 mm	22 mm	£23.19

New



#### SLIP COUPLING

2150

PART NUMBER	TUBE OD	PRICE
JGSBA01S15	15 mm	£14.48
JGSBA01S22	22 mm	£19.19
JGSBA01S28	28 mm	£22.41

New



#### 45° ELBOW

2150

PART NUMBER	TUBE OD	PRICE
JGSBA0515	15 mm	£11.12
JGSBA0522	22 mm	£15.35
JGSBA0528	28 mm	£18.04

### UXL FITTINGS

New



#### STRAIGHT COUPLING

2150

PART NUMBER	TUBE OD	PRICE
JGSBA0135E	35 mm	£18.60
JGSBA0142E	42 mm	£23.92
JGSBA0154E	54 mm	£35.63

New



#### REDUCING COUPLING

2150

PART NUMBER	TUBE OD	TUBE OD	PRICE
JGSBA013528E	35 mm	28 mm	£27.79
JGSBA014235E	42 mm	35 mm	£31.23
JGSBA015442E	54 mm	42 mm	£33.72

New



#### SLIP COUPLING

2150

PART NUMBER	TUBE OD	PRICE
JGSBA01S35E	35 mm	£32.44
JGSBA01S42E	42 mm	£42.10
JGSBA01S54E	54 mm	£63.47

New



#### 45° ELBOW

2150

PART NUMBER	TUBE OD	PRICE
JGSBA0535E	35 mm	£22.55
JGSBA0542E	42 mm	£29.89
JGSBA0554E	54 mm	£39.44

STANDARD FITTINGS

New



90° ELBOW

2150

PART NUMBER	TUBE OD	PRICE
JGSBA0210	10 mm	£10.08
JGSBA0215	15 mm	£10.73
JGSBA0222	22 mm	£15.32
JGSBA0228	28 mm	£17.90

New



EQUAL TEE

2150

PART NUMBER	TUBE OD	PRICE
JGSBA0310	10 mm	£10.08
JGSBA0315	15 mm	£11.48
JGSBA0322	22 mm	£15.94
JGSBA0328	28 mm	£21.62

New



REDUCING TEE

2150

PART NUMBER	TUBE OD	TUBE OD	PRICE
JGSBA0322210	22 mm	10 mm	£17.53
JGSBA0322215	22 mm	15 mm	£16.25
JGSBA0328215	28 mm	15 mm	£20.56
JGSBA0328222	28 mm	22 mm	£20.56

New



FEMALE BACKPLATE ELBOW  
FEMALE BSP THREAD

2150

PART NUMBER	TUBE OD	THREAD	PRICE
JGSBA121515FBP	15 mm	1/2" BSP	£20.28
JGSBA122220FBP	22 mm	3/4" BSP	£33.98

New



BALL VALVES

2150

PART NUMBER	TUBE OD	PRICE
JGSBA2715	15 mm	£17.67
JGSBA2722	22 mm	£24.98
JGSBA2728	28 mm	£36.13

New



END STOP

2150

PART NUMBER	TUBE OD	PRICE
JGSBA0410	10 mm	£3.67
JGSBA0415	15 mm	£3.75
JGSBA0422	22 mm	£4.87
JGSBA0428	28 mm	£7.25

UXL FITTINGS

New



90° ELBOW

2150

PART NUMBER	TUBE OD	PRICE
JGSBA0235E	35 mm	£25.43
JGSBA0242E	42 mm	£32.60
JGSBA0254E	54 mm	£50.56

New



EQUAL TEE

2150

PART NUMBER	TUBE OD	PRICE
JGSBA0335E	35 mm	£36.08
JGSBA0342E	42 mm	£47.48
JGSBA0354E	54 mm	£76.38

New



REDUCING TEE

2150

PART NUMBER	TUBE OD	TUBE OD	PRICE
JGSBA03353522E	35 mm	22 mm	£28.51
JGSBA03353528E	35 mm	28 mm	£30.28
JGSBA03424222E	42 mm	22 mm	£35.68
JGSBA03424228E	42 mm	28 mm	£36.61
JGSBA03424235E	42 mm	35 mm	£48.06
JGSBA03545428E	54 mm	28 mm	£52.35
JGSBA03545435E	54 mm	35 mm	£65.23
JGSBA03545442E	54 mm	42 mm	£67.87

New



BALL VALVES

2150

PART NUMBER	TUBE OD	PRICE
JGSBA2735E	35 mm	£44.23
JGSBA2742E	42 mm	£60.22
JGSBA2754E	54 mm	£89.21

New



END STOP

2150

PART NUMBER	TUBE OD	PRICE
JGSBA0435E	35 mm	£12.52
JGSBA0442E	42 mm	£16.86
JGSBA0454E	54 mm	£27.73



## STANDARD FITTINGS

New



MALE BSPT CONNECTOR

2150

PART NUMBER	TUBE OD	THREAD	PRICE
JGSBA111515MT	15 mm	1/2" BSPT	£16.05
JGSBA112220MT	22 mm	3/4" BSPT	£18.57
JGSBA112825MT	28 mm	1" BSPT	£23.56

New



FEMALE BSPP CONNECTOR

2150

PART NUMBER	TUBE OD	THREAD	PRICE
JGSBA111515F	15 mm	1/2" BSPP	£14.87
JGSBA112220F	22 mm	3/4" BSPP	£19.07

## UXL FITTINGS

New



MALE BSPT CONNECTOR

2150

PART NUMBER	TUBE OD	THREAD	PRICE
JGSBA113532ME	35 mm	1 1/4" BSPT	£28.68
JGSBA114240ME	42 mm	1 1/2" BSPT	£30.45
JGSBA115450ME	54 mm	2" BSPT	£34.93

New



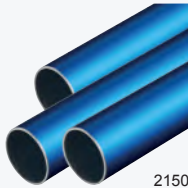
FEMALE BSPP CONNECTOR

2150

PART NUMBER	TUBE OD	THREAD	PRICE
JGSBA113532FE	35 mm	1 1/4" BSPP	£26.83
JGSBA114240FE	42 mm	1 1/2" BSPP	£28.93
JGSBA115450FE	54 mm	2" BSPP	£33.61

## PIPE AND ACCESSORIES

New



ANODISED ALUMINIUM PIPE  
STANDARD

2150

PART NUMBER	mm	mm	mm	bar	PRICE
JGAL-IR1513-3M-20B	15	13	3	20	£15.04
JGAL-IR2220-3M-20B	22	20	3	20	£28.60
JGAL-IR2826-3M-10B	28	26	3	20	£38.65

### UXL

PART NUMBER	mm	mm	mm	bar	PRICE
JGAL-IR3531-3M-5B	35	31	3	20	£60.72
JGAL-IR4238-3M-5B	42	38	3	20	£91.39
JGAL-IR5450-3M-5B	54	50	3	20	£117.44

Note: Pipe working pressures are dependent on fittings used, please see technical data on pages 648 – 649.

New



PIPE CLIPS

2150

PART NUMBER	TUBE OD	PRICE
JGSBA0855510	10 – 12 mm	£1.23
JGSBA0855515	14 – 16 mm	£1.09
JGSBA0855518	16 – 20 mm	£1.37
JGSBA0855522	20 – 23 mm	£1.62
JGSBA0855531	28 – 32 mm	£1.99
JGSBA0855538	35 – 40 mm	£3.59
JGSBA0855542	40 – 44 mm	£4.54
JGSBA0855554	48 – 55 mm	£5.97
JGSBA08555310	10 mm Spacer block	£1.99

You may also need ...



**John Guest  
brass stem adaptors**

Converts push-fit end  
to male / female thread

... see page 629, section 12

New



DEPTH MARKER  
DEMOUNTING CLIP

2150

PART NUMBER	TUBE OD	PRICE
JGSB2910	10 mm	£1.29
JGSB2915	15 mm	£1.29
JGSB2922	22 mm	£1.29
JGSB2928	28 mm	£1.29

New



DEMOUNTING CLIP  
FOR UXL FITTINGS

2150

PART NUMBER	TUBE OD	PRICE
JGUXLDC35	35 mm	£3.22
JGUXLDC41	42 mm	£3.22
JGUXLDC54	54 mm	£3.22

New



DEMOUNTING TONGS

2150

PART NUMBER	TUBE OD	PRICE
JGSB3010	10 mm	£6.92
JGSB3015	15 mm	£6.92
JGSB3022	22 mm	£6.92
JGSB3028	28 mm	£7.62

New

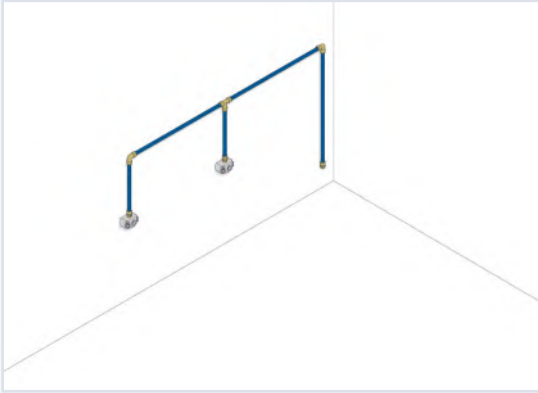


DEPTH / DEBURRING TOOL

2150

PART NUMBER	TUBE OD	PRICE
JGUXLG03	35 – 54 mm	£27.08

## 2 DROPS



### CONTENTS

PART NUMBER	DESCRIPTION	QTY
JGAL-IR220-3M-20B	22 mm Pipe	4
JGSBA0222	22 mm 90° Elbow	2
JGSBA0322	22 mm Equal Tee	1
JGSBA112220MT	22 mm Male BSPT Connector	3
JGWALLBOX4	1/2" Aluminium Wallbox	2
JGSBA0855522	22 mm Pipe Clip	10
JGSB2922	Demounting Clip	1

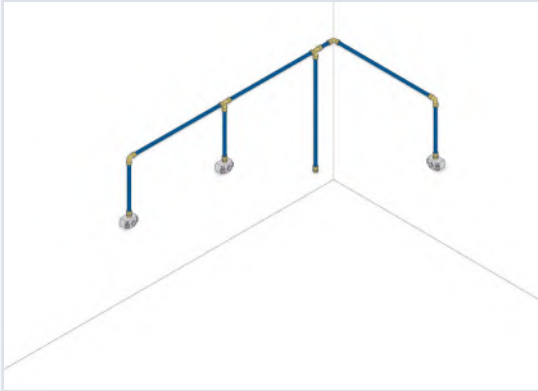


KIT 1

2150

PART NUMBER	DESCRIPTION	PRICE
<b>JGSBA2DROP</b>	2 drops	<b>£308.74</b>

## 3 DROPS



### CONTENTS

PART NUMBER	DESCRIPTION	QTY
JGAL-IR220-3M-20B	22 mm Pipe	6
JGSBA0222	22 mm 90° Elbow	3
JGSBA0322	22 mm Equal Tee	2
JGSBA112220MT	22 mm Male BSPT Connector	4
JGWALLBOX4	1/2" Aluminium Wallbox	3
JGSBA0855522	22 mm Pipe Clip	15
JGSB2922	Demounting Clip	1

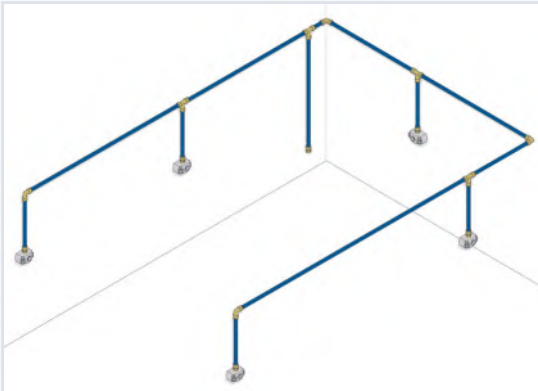


KIT 2

2150

PART NUMBER	DESCRIPTION	PRICE
<b>JGSBA3DROP</b>	3 drops	<b>£452.78</b>

## 5 DROPS



### CONTENTS

PART NUMBER	DESCRIPTION	QTY
JGAL-IR220-3M-20B	22 mm Pipe	12
JGSBA0222	22 mm 90° Elbow	4
JGSBA0322	22 mm Equal Tee	4
JGSBA112220MT	22 mm Male BSPT Connector	6
JGWALLBOX4	1/2" Aluminium Wallbox	5
JGSBA0855522	22 mm Pipe Clip	30
JGSB2922	Demounting Clip	1



KIT 3

2150

PART NUMBER	DESCRIPTION	PRICE
<b>JGSBA5DROP</b>	5 drops	<b>£791.49</b>



## MAKE RELIABLE CONNECTIONS THE FAST AND SIMPLE WAY

Quick and easy to install, the John Guest Air & Pneumatics push-fit range ensures air tight pipe connections are made. Available in 3 to 28 mm sizes, our robust range of fittings and pipes are ideal for small to mid-size applications such as garages and a variety of other commercial air piping systems.

John Guest offers rapid assembly using a simple push-fit action that eliminates the need for tools, threaded pipe, solvent and glue. Our unique collet locking design firmly and securely holds the pipe in place without deforming the pipe or restricting flow. John Guest air systems are easy to extend or alter as fittings are fully demountable, without using tools, which reduces maintenance and production downtime.

Fittings are available in tough engineered plastic or brass, including a unique water trap that removes moisture from the air line to improve system performance and longevity.

Designed to work with our nylon, powder coated aluminium pipe or LLDPE pipe, our versatile solution is also compatible with copper, PEXa and other soft metal pipes.

## FEATURES

- Acetal copolymer or brass fittings
- Push-fit connection ends
- Demountable design without using tools
- Secure collet cover to prevent accidental disconnection
- Nitrile O-Ring and collet with stainless steel teeth
- Suitable for air and vacuum applications up to 10 bar

## BENEFITS

- Reliable leakproof solution that grips before it seals
- Instant, tool-free push-fit connection
- Corrosion-free solution that extends equipment lifecycle and reduces maintenance
- Fast and simple system alterations or extension, with minimal downtime
- Lightweight and easy to handle material
- A versatile solution that connects to metal or plastic pipe

## AIR SYSTEM CONFIGURATION

The John Guest Air & Pneumatics system offers rapid assembly from the compressor to air line, through to the complete ring main and take off points.

## SPECIFICATIONS

### MATERIALS

Bodies	Acetal copolymer
O-rings	Nitrile rubber
Collets	Acetal copolymer with stainless steel teeth

### TUBE TOLERANCES

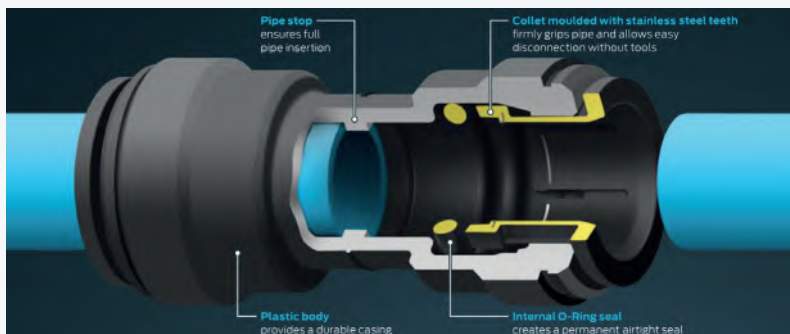
Size	12 mm – 28 mm OD
Tolerance	-0.10 mm to +0.05 mm OD

*For further technical details  
... see pages 648 – 649, section 12*

AN RWC BRAND



## INSIDE JOHN GUEST TECHNOLOGY





## MAKING A CONNECTION

### CONNECTING PUSH-FIT

#### Cutting the pipe



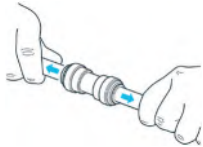
Cut the pipe square. Ideally use a John Guest pipe cutter for rigid nylon pipe and aluminium pipe cutters for aluminium pipe. To avoid damage to the O-Ring remove any burrs and sharp edges.

#### Making the push-fit connection



Push the pipe up to the pipe stop.

#### Check the connection is secure



Pull to check a secure connection is made. Test the system before use.

### DEMOUNTING PUSH-FIT

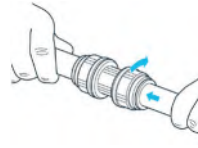
#### Demounting push-fit fittings



To disconnect, ensure the system is depressurised. Push the collet towards the fitting and remove the pipe. Fittings are reusable.

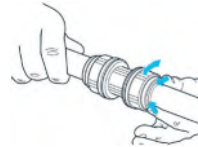
### CONNECTING & DEMOUNTING SCREW CAP

#### Connecting screw cap fittings



After inserting the pipe, a ¼ turn of the screw cap locks the collet in place and reduces lateral and sideways movement of the pipe.

#### Demounting screw cap fittings



To disconnect, ¼ turn the screw cap, push the collet and remove the pipe. Fittings are reusable.

**Note:** Whilst we recommend the use of John Guest Rigid Nylon Pipe, John Guest fittings can also be used with copper or aluminium pipe.



#### STRAIGHT CONNECTOR MALE BSPP WITH O-RING THREAD SEAL



2110

PART NUMBER	TUBE OD	THREAD	PRICE
JGPM011213E	12 mm	3/8" BSPP	£3.19
JGPM011214E	12 mm	1/2" BSPP	£3.83
JGPM011513E	15 mm	3/8" BSPP	£4.26
JGPM011514E	15 mm	1/2" BSPP	£4.49
JGPM011516E*	15 mm	3/4" BSPP	£5.14
JGPM011814E	18 mm	1/2" BSPP	£4.75
JGPM012216E	22 mm	3/4" BSPP	£4.98
JGPM012818E	28 mm	1" BSPP	£8.05

\* No thread seal



#### STEM ADAPTOR MALE BSPP WITH O-RING THREAD SEAL



2110

PART NUMBER	STEM OD	THREAD	PRICE
JGPM051213E	12 mm	3/8" BSPP	£1.87
JGPM051214E	12 mm	1/2" BSPP	£2.07
JGPM051513E	15 mm	3/8" BSPP	£2.03
JGPM051514E	15 mm	1/2" BSPP	£2.57
JGPM051814E	18 mm	1/2" BSPP	£2.84
JGPM052214E	22 mm	1/2" BSPP	£3.11
JGPM052216E	22 mm	3/4" BSPP	£3.64

Converts push-fit ends to male thread



#### STRAIGHT CONNECTOR



2110

PART NUMBER	TUBE OD	PRICE
JGPM0412E	12 mm	£2.73
JGPM0415E	15 mm	£3.11
JGPM0418E	18 mm	£4.22
JGPM0422E	22 mm	£5.14
JGPM0428E	28 mm	£10.54



#### REDUCER



2110

PART NUMBER	STEM OD	TUBE OD	PRICE
JGPM061510E	15 mm	10 mm	£4.18
JGPM061512E	15 mm	12 mm	£3.92
JGPM061815E	18 mm	15 mm	£5.12
JGPM062215E	22 mm	15 mm	£5.14
JGPM062218E	22 mm	18 mm	£5.12
JGPM062815E	28 mm	15 mm	£8.01
JGPM062822E	28 mm	22 mm	£9.59



### EQUAL TEE



2110

PART NUMBER	TUBE OD	PRICE
JGPM0212E	12 mm	£3.82
JGPM0215E	15 mm	£4.52
JGPM0218E	18 mm	£6.17
JGPM0222E	22 mm	£7.40
JGPM0228E	28 mm	£16.10



### REDUCING TEE



2110

PART NUMBER	TUBE OD ENDS	TUBE OD BRANCH	PRICE
JGPM3018AE	18 mm	15 mm	£7.94
JGPM3022AE	22 mm	15 mm	£7.94



### EQUAL ELBOW



2110

PART NUMBER	TUBE OD	PRICE
JGPM0312E	12 mm	£3.61
JGPM0315E	15 mm	£4.29
JGPM0318E	18 mm	£5.87
JGPM0322E	22 mm	£6.98
JGPM0328E	28 mm	£12.65



### WATER TRAP TEE



2110

PART NUMBER	TUBE OD	PRICE
JGPMTT22E	22 mm	£13.69

The easy alternative to installing a 'Swan Neck'



### STEM ELBOW



2110

PART NUMBER	PIPE OD	STEM OD	PRICE
JGPM221212E	12 mm	12 mm	£3.63
JGPM221515E	15 mm	15 mm	£4.68
JGPM221818E	18 mm	18 mm	£5.84
JGPM222222E	22 mm	22 mm	£6.98

Provides a swivel-type connector



### U-BEND



2110

PART NUMBER	TUBE OD	PRICE
JGPMUB15E	15 mm	£5.82



### END STOP



2110

PART NUMBER	TUBE OD	PRICE
JGPM4612E	12 mm	£3.02
JGPM4615E	15 mm	£3.31
JGPM4622E	22 mm	£3.99

## BRASS COMPRESSED AIR FITTINGS

### BRASS WINGBACK ELBOW

#### FEMALE BSP



2110

PART NUMBER	TUBE OD	THREAD	PRICE
JGPM15WB	15 mm	1/2" BSP	£22.77
JGPM22WB	22 mm	3/4" BSP	£26.68

### MALE BRASS STEM ADAPTOR

#### MALE BSPT / BSP



2110

PART NUMBER	STEM OD	THREAD	PRICE
JGMM051504N	15 mm	1/2" BSPT	£10.72
JGMM052206N	22 mm	3/4" BSPT	£14.99
JGMM052818N	28 mm	1" BSP	£26.45

### MALE NPT

PART NUMBER	TUBE OD	THREAD	PRICE
JGMM052226N	22 mm	3/4" NPT	£18.91
JGMM052228N	22 mm	1" NPT	£20.25
JGMM052828N	28 mm	1" NPT	£22.66

Converts push-fit ends to male thread

### FEMALE BRASS STEM ADAPTOR

#### FEMALE BSP



2110

PART NUMBER	STEM OD	THREAD	PRICE
JGMM501514N	15 mm	1/2" BSP	£10.74
JGMM502216N	22 mm	3/4" BSP	£16.83

Converts push-fit ends to female thread

### WATER TRAP TEE CONVERTOR

PART NUMBER	TUBE OD	PRICE
JGWTCT28	28 mm	£11.03

Converts a 28 mm Tee to a Water Trap Tee

### BRASS STRAIGHT ADAPTOR

#### MALE BSPT



2110

PART NUMBER	TUBE OD	THREAD	PRICE
JGMM011504N	15 mm	1/2" BSPT	£9.78
JGMM012206N	22 mm	3/4" BSPT	£17.48
JGMM012808N	28 mm	1" BSPT	£34.28



**PORTING BLOCK**

2110

PART NUMBER	CONNECTIONS	PRICE
JG-L-WSK	5 x 1/2"	£19.94

Supplied with blanking plugs



**ALUMINIUM PIPE CUTTER**

2110

PART NUMBER	TUBE OD	PRICE
JGALCUTR15	15 mm	£69.72
JGALCUTR18	18 mm	£77.18
JGALCUTR22	22 mm	£77.17
JGALCUTR28	28 mm	£103.36



**ALUMINIUM WALL BOX**

2110

PART NUMBER	SIZE	PRICE
JGWALLBOX4	1/2"	£48.85
JGWALLBOX5	3/4"	£48.85

1/2 or 3/4 female thread on the top  
Both products have 3 x 1/2 female threads on the side  
Supplied with blanking plugs

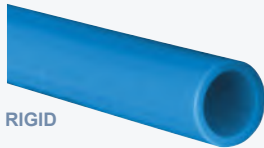


**TUBE CUTTER  
LIGHT DUTY**

2110

PART NUMBER	DESCRIPTION	PRICE
JGTSNIP	Tube cutter	£9.88
JGBLADENIP	Blade	£4.41

For up to and including 12 mm pipe



**JOHN GUEST LIGHT BLUE RIGID  
NYLON PIPE**

2120

PART NUMBER	mm	mm	mtrs	bar	PRICE
JGPARM1209	12	9	3	14	£9.92
JGPARM1512	15	12	3	14	£12.50
JGPARM1814	18	14	3	14	£20.36
JGPARM2218	22	18	3	14	£22.89
JGPARM2823	28	23	3	14	£35.84

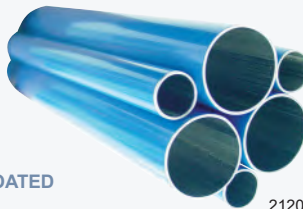


**PIPE CUTTER  
HEAVY DUTY**

2110

PART NUMBER	DESCRIPTION	PRICE
JGHDC	Pipe cutter	£113.96
JGBLADE-HDC	Blade	£32.91

For up to and including 28 mm pipe



**JOHN GUEST POWDER COATED  
ALUMINIUM PIPE**

2120

PART NUMBER	mm	mm	mtrs	bar	PRICE
JGAL-RM1513	15	13	3	20	£27.10
JGAL-RM1816	18	16	3	20	£36.01
JGAL-RM2220	22	20	3	20	£40.52
JGAL-RM2826	28	26	3	20	£65.32

**PIPE CUTTER  
MEDIUM DUTY**

2110

PART NUMBER	DESCRIPTION	PRICE
JGJGTS	Disposable pipe cutter	£71.81

For up to and including 22 mm pipe



Note: Pipe working pressures are dependent on fittings used, please see technical data

... see pages 648 – 649, section 12



## PLUG



2110

PART NUMBER	STEM OD	COLOUR	PRICE
JGPM0812R	12 mm	Red	£1.30
JGPM0815E	15 mm	Black	£1.50
JGPM0818E	18 mm	Black	£1.68
JGPM0822E	22 mm	Black	£1.79
JGPM0828E	28 mm	Black	£2.34



## FLOW BEND CLIP



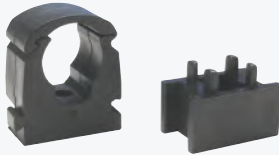
2110

PART NUMBER	TUBE OD	PRICE
JGPM2608S	8 mm / 5/16"	£1.10
JGPM2610S	10 mm / 3/8"	£1.28

Designed to support pipe and eliminate kinking



## PIPE CLIP



2110

PART NUMBER	TUBE OD	PRICE
JGPM15TPC	15 mm	£0.38
JGPM18TPC	18 mm	£0.38
JGPM22TPC	22 mm	£0.38
JGPM28TPC	28 mm	£0.50
JGPMPCS	Pipe clip spacers	£0.27

## RELEASE AID



2110

PART NUMBER	TUBE OD	PRICE
JG15RA	15 mm	£0.84
JG22RA	22 mm	£1.37
JG28RA	28 mm	£2.05



## LOCKING CLIP



2110

PART NUMBER	TUBE OD	PRICE
JGPIC1808R	1/4"	£0.28
JGPIC1812R	3/8"	£0.29
JGPMC1815R	15 mm	£0.28

Secures the collet in its position to prevent an accidental disconnection of the pipe

## COLLET LOCKING TOOL



2110

PART NUMBER	SIZE	PRICE
JGICLT/2	3/16" to 1/2"	£9.82

## COLLET COVERS

The slip-on Collet Cover prevents accidental pipe removal or tampering. The pipe can be inserted with the Collet Cover already attached to the fittings or the cover can slide into position afterwards. The cover is easily removed when required and comes in a variety of colours for colour coding.



## COLLET COVERS

### METRIC



2110

PART NUMBER	TUBE OD	COLOUR	PRICE
JGPM1904E	4 mm	Black	£0.16
JGPM1905E	5 mm	Black	£0.17
JGPM1906E	6 mm	Black	£0.28
JGPM1908E	8 mm	Black	£0.29
JGPM1910E	10 mm	Black	£0.31
JGPM1912E	12 mm	Black	£0.31
JGPM1915E	15 mm	Black	£0.42
JGPM1918E	18 mm	Black	£0.46
JGPM1922E	22 mm	Black	£0.58



## COLLET COVERS

### IMPERIAL



2110

PART NUMBER	TUBE OD	COLOUR	PRICE
JGPM1904S	5/32"	Grey	£0.16
JGPI1906S	3/16"	Grey	£0.17
JGPI1908S	1/4"	Grey	£0.22
JGPI1908G	1/4"	Green	£0.22
JGPI1908R	1/4"	Red	£0.22
JGPI1908Y	1/4"	Yellow	£0.22
JGPM1908S	5/16"	Grey	£0.28
JGPI1912S	3/8"	Grey	£0.29
JGPI1912B	3/8"	Blue	£0.29
JGPI1912G	3/8"	Green	£0.29
JGPI1912R	3/8"	Red	£0.28
JGPI1912Y	3/8"	Yellow	£0.29
JGPI1916S	1/2"	Grey	£0.31

● Items marked: minimum quantities may apply  
Please ask at time of order

## METRIC FITTINGS

As well as standard push-fit connections and metric fittings that work with specific threads, we offer selected fittings with SuperThread technology that enables them to be used with any thread type.

The special Polyurethane seal feature means no sealant need be applied to make an airtight joint. There is no danger of tape entering the system.

Fittings with SuperThread also have countersunk throughbores to provide superior flow characteristics.

The design allows for a smaller compact body and reduced hexagon size.

## STRAIGHT ADAPTOR MALE METRIC THREAD



2110

PART NUMBER	TUBE OD	THREAD	PRICE
JGRM0104M5	4 mm	M5	£2.91
JGRM0105M5	5 mm	M5	£3.00
JGRM0106M5	6 mm	M5	£2.76

## STRAIGHT ADAPTOR WITH INTEGRAL SEAL MALE SUPERTHREAD



2110

PART NUMBER	TUBE OD	THREAD	PRICE
JGRM010411	4 mm	1/8"	£2.68
JGRM010412	4 mm	1/4"	£3.39
JGRM010511	5 mm	1/8"	£3.06
JGRM010512	5 mm	1/4"	£3.26
JGRM010611	6 mm	1/8"	£3.26
JGRM010612	6 mm	1/4"	£2.73
JGRM010811	8 mm	1/8"	£3.37
JGRM010812	8 mm	1/4"	£3.37
JGRM010813	8 mm	3/8"	£4.85
JGRM011012	10 mm	1/4"	£4.72
JGRM011013	10 mm	3/8"	£5.49
JGRM011014	10 mm	1/2"	£6.79
JGRM011213	12 mm	3/8"	£6.79
JGRM011214	12 mm	1/2"	£7.21

Thread can be used with BSP, BSPT, NPT, PF and PT

## STRAIGHT ADAPTOR MALE BSPP



2110

PART NUMBER	TUBE OD	THREAD	PRICE
JGPM010411E	4 mm	1/8" BSPP	£1.57
JGPM010412E	4 mm	1/4" BSPP	£1.57
JGPM010511E	5 mm	1/8" BSPP	£1.45
JGPM010512E	5 mm	1/4" BSPP	£1.78
JGPM010611E	6 mm	1/8" BSPP	£1.42
JGPM010612E	6 mm	1/4" BSPP	£1.59
JGPM010811E	8 mm	1/8" BSPP	£1.50
JGPM010812E	8 mm	1/4" BSPP	£1.57
JGPM010813E	8 mm	3/8" BSPP	£2.27
JGPM011012E	10 mm	1/4" BSPP	£2.53
JGPM011013E	10 mm	3/8" BSPP	£2.76
JGPM011014E	10 mm	1/2" BSPP	£3.49
JGPM011213E	12 mm	3/8" BSPP	£3.19
JGPM011214E	12 mm	1/2" BSPP	£3.83

## STRAIGHT ADAPTOR MALE BSPT



2110

PART NUMBER	TUBE OD	THREAD	PRICE
JGPM010401E	4 mm	1/8" BSPT	£1.08
JGPM010402E	4 mm	1/4" BSPT	£1.50
JGPM010501E	5 mm	1/8" BSPT	£1.15
JGPM010502E	5 mm	1/4" BSPT	£1.50
JGPM010601E	6 mm	1/8" BSPT	£1.35
JGPM010602E	6 mm	1/4" BSPT	£1.50
JGPM010801E	8 mm	1/8" BSPT	£1.48
JGPM010802E	8 mm	1/4" BSPT	£1.50
JGPM010803E	8 mm	3/8" BSPT	£1.96
JGPM011002E	10 mm	1/4" BSPT	£2.42
JGPM011003E	10 mm	3/8" BSPT	£2.57
JGPM011004E	10 mm	1/2" BSPT	£3.11
JGPM011203E	12 mm	3/8" BSPT	£3.28
JGPM011204E	12 mm	1/2" BSPT	£3.60

## EQUAL STRAIGHT CONNECTOR



2110

PART NUMBER	TUBE OD	PRICE
JGPM0404E	4 mm	£1.68
JGPM0405E	5 mm	£1.70
JGPM0406E	6 mm	£1.80
JGPM0408E	8 mm	£1.96
JGPM0410E	10 mm	£2.57
JGPM0412E	12 mm	£2.73

## EQUAL STRAIGHT CONNECTOR



2110

PART NUMBER	TUBE OD	PRICE
JGRM0404E	4 mm	£1.96
JGRM0405E	5 mm	£1.99
JGRM0406E	6 mm	£2.05
JGRM0408E	8 mm	£2.32
JGRM0410E	10 mm	£2.96
JGRM0412E	12 mm	£3.47

## EQUAL ELBOW



2110

PART NUMBER	TUBE OD	PRICE
JGPM0304E	4 mm	£1.85
JGPM0305E	5 mm	£1.87
JGPM0306E	6 mm	£2.03
JGPM0308E	8 mm	£2.34
JGPM0310E	10 mm	£3.11
JGPM0312E	12 mm	£3.61

## EQUAL ELBOW



2110

PART NUMBER	TUBE OD	PRICE
JGRM0304E	4 mm	£2.19
JGRM0305E	5 mm	£2.23
JGRM0306E	6 mm	£2.42
JGRM0308E	8 mm	£2.76
JGRM0310E	10 mm	£3.62
JGRM0312E	12 mm	£4.52





**SWIVEL ELBOW**  
c/w INTEGRAL SEAL  
MALE SUPERTHREAD

2110

PART NUMBER	TUBE OD	THREAD	PRICE
● JGRM090411	4 mm	1/8"	£3.99
● JGRM090611	6 mm	1/8"	£3.87
● JGRM090612	6 mm	1/4"	£4.23
● JGRM090811	8 mm	1/8"	£4.23
● JGRM090812	8 mm	1/4"	£4.68
● JGRM091012	10 mm	1/4"	£6.64
● JGRM091013	10 mm	3/8"	£7.77
● JGRM091213	12 mm	3/8"	£8.84
● JGRM091214	12 mm	1/2"	£10.88

With integral seal. Thread can be used with BSP, BSPT, NPT, PF and PT.



**SWIVEL ELBOW**  
MALE METRIC THREAD

2110

PART NUMBER	TUBE OD	THREAD	PRICE
● JGRM0904M5	4 mm	M5	£4.63
● JGRM0906M5	6 mm	M5	£5.21



**SWIVEL ELBOW**  
MALE BSPP



2110

PART NUMBER	TUBE OD	THREAD	PRICE
● JGPM090411E	4 mm	1/8" BSPP	£4.13
● JGPM090412E	4 mm	1/4" BSPP	£4.32
● JGPM090511E	5 mm	1/8" BSPP	£3.77
● JGPM090512E	5 mm	1/4" BSPP	£3.80
● JGPM090611E	6 mm	1/8" BSPP	£3.80
● JGPM090612E	6 mm	1/4" BSPP	£3.99
● JGPM090811E	8 mm	1/8" BSPP	£4.52
● JGPM090812E	8 mm	1/4" BSPP	£4.50
● JGPM090813E	8 mm	3/8" BSPP	£5.18
● JGPM091012E	10 mm	1/4" BSPP	£6.13
● JGPM091013E	10 mm	3/8" BSPP	£6.60
● JGPM091014E	10 mm	1/2" BSPP	£7.61
● JGPM091213E	12 mm	3/8" BSPP	£7.66
● JGPM091214E	12 mm	1/2" BSPP	£8.51



**SWIVEL ELBOW**  
MALE BSPT



2110

PART NUMBER	TUBE OD	THREAD	PRICE
● JGPM090401E	4 mm	1/8" BSPT	£3.64
● JGPM090402E	4 mm	1/4" BSPT	£4.46
● JGPM090501E	5 mm	1/8" BSPT	£3.71
● JGPM090502E	5 mm	1/4" BSPT	£3.75
● JGPM090601E	6 mm	1/8" BSPT	£3.68
● JGPM090602E	6 mm	1/4" BSPT	£3.93
● JGPM090801E	8 mm	1/8" BSPT	£4.30
● JGPM090802E	8 mm	1/4" BSPT	£4.43
● JGPM090803E	8 mm	3/8" BSPT	£4.96
● JGPM091002E	10 mm	1/4" BSPT	£5.91
● JGPM091003E	10 mm	3/8" BSPT	£6.42
● JGPM091004E	10 mm	1/2" BSPT	£7.41
● JGPM091203E	12 mm	3/8" BSPT	£7.46
● JGPM091204E	12 mm	1/2" BSPT	£8.32



**EQUAL TEE**



2110

PART NUMBER	TUBE OD	PRICE
JGPM0204E	4 mm	£2.71
JGPM0205E	5 mm	£2.56
JGPM0206E	6 mm	£2.72
JGPM0208E	8 mm	£2.88
JGPM0210E	10 mm	£3.49
JGPM0212E	12 mm	£3.82

**EQUAL TEE**



2110

PART NUMBER	TUBE OD	PRICE
JGRM0204E	4 mm	£2.89
JGRM0205E	5 mm	£3.02
JGRM0206E	6 mm	£3.18
JGRM0208E	8 mm	£3.49
JGRM0212E	12 mm	£4.75

● Items marked: minimum quantities may apply  
Please ask at time of order



**SWIVEL TEE CENTRE LEG  
MALE BSPP**

2110

PART NUMBER	TUBE OD	THREAD	PRICE
● JGPM100411E	4 mm	1/8" BSPP	£5.52
● JGPM100412E	4 mm	1/4" BSPP	£4.91
● JGPM100511E	5 mm	1/8" BSPP	£4.97
● JGPM100512E	5 mm	1/4" BSPP	£5.54
● JGPM100611E	6 mm	1/8" BSPP	£4.67
● JGPM100612E	6 mm	1/4" BSPP	£4.85
● JGPM100811E	8 mm	1/8" BSPP	£5.23
● JGPM100812E	8 mm	1/4" BSPP	£5.29
● JGPM100813E	8 mm	3/8" BSPP	£6.13
● JGPM101012E	10 mm	1/4" BSPP	£6.51
● JGPM101013E	10 mm	3/8" BSPP	£7.64
● JGPM101014E	10 mm	1/2" BSPP	£8.12
● JGPM101213E	12 mm	3/8" BSPP	£8.34
● JGPM101214E	12 mm	1/2" BSPP	£9.18



**SWIVEL TEE CENTRE LEG  
MALE BSPT**

2110

PART NUMBER	TUBE OD	THREAD	PRICE
● JGPM100401E	4 mm	1/8" BSPT	£4.07
● JGPM100402E	4 mm	1/4" BSPT	£4.59
● JGPM100501E	5 mm	1/8" BSPT	£4.29
● JGPM100502E	5 mm	1/4" BSPT	£4.72
● JGPM100601E	6 mm	1/8" BSPT	£5.34
● JGPM100602E	6 mm	1/4" BSPT	£4.72
● JGPM100801E	8 mm	1/8" BSPT	£5.12
● JGPM100802E	8 mm	1/4" BSPT	£5.23
● JGPM100803E	8 mm	3/8" BSPT	£5.45
● JGPM101002E	10 mm	1/4" BSPT	£7.70
● JGPM101003E	10 mm	3/8" BSPT	£6.80
● JGPM101004E	10 mm	1/2" BSPT	£7.77
● JGPM101203E	12 mm	3/8" BSPT	£8.50
● JGPM101204E	12 mm	1/2" BSPT	£9.00



**SWIVEL RUN TEE  
MALE BSPP**

2110

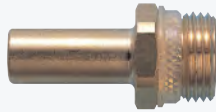
PART NUMBER	TUBE OD	THREAD	PRICE
● JGPM110411E	4 mm	1/8" BSPP	£5.27
● JGPM110412E	4 mm	1/4" BSPP	£4.45
● JGPM110511E	5 mm	1/8" BSPP	£4.34
● JGPM110512E	5 mm	1/4" BSPP	£4.46
● JGPM110611E	6 mm	1/8" BSPP	£4.67
● JGPM110612E	6 mm	1/4" BSPP	£4.85
● JGPM110811E	8 mm	1/8" BSPP	£5.23
● JGPM110812E	8 mm	1/4" BSPP	£5.29
● JGPM110813E	8 mm	3/8" BSPP	£6.13
● JGPM111012E	10 mm	1/4" BSPP	£7.45
● JGPM111013E	10 mm	3/8" BSPP	£7.04
● JGPM111014E	10 mm	1/2" BSPP	£8.12
● JGPM111213E	12 mm	3/8" BSPP	£8.34
● JGPM111214E	12 mm	1/2" BSPP	£8.43



**SWIVEL RUN TEE  
MALE BSPT**

2110

PART NUMBER	TUBE OD	THREAD	PRICE
● JGPM110401E	4 mm	1/8" BSPT	£4.21
● JGPM110402E	4 mm	1/4" BSPT	£4.23
● JGPM110501E	5 mm	1/8" BSPT	£4.29
● JGPM110502E	5 mm	1/4" BSPT	£4.34
● JGPM110601E	6 mm	1/8" BSPT	£4.91
● JGPM110602E	6 mm	1/4" BSPT	£5.40
● JGPM110801E	8 mm	1/8" BSPT	£5.36
● JGPM110802E	8 mm	1/4" BSPT	£5.69
● JGPM110803E	8 mm	3/8" BSPT	£5.95
● JGPM111002E	10 mm	1/4" BSPT	£6.42
● JGPM111003E	10 mm	3/8" BSPT	£7.77
● JGPM111004E	10 mm	1/2" BSPT	£7.14
● JGPM111203E	12 mm	3/8" BSPT	£7.45
● JGPM111204E	12 mm	1/2" BSPT	£8.24



**STEM ADAPTOR  
MALE SUPERTHREAD**

2110

PART NUMBER	TUBE OD	THREAD	PRICE
● JGRM050612	6 mm	1/4"	£2.89
● JGRM050812	8 mm	1/4"	£2.82

Thread can be used with BSP, BSPT, NPT, PF and PT

Literature is available for guidance on installing John Guest fittings, tube and pipe. Please contact your distributor for more details.

● Items marked: minimum quantities may apply  
Please ask at time of order



## STEM ADAPTOR MALE BSP



2110

PART NUMBER	STEM OD	THREAD	PRICE
JGPM050411E	4 mm	1/8" BSP	£0.83
JGPM050412E	4 mm	1/4" BSP	£0.81
JGPM050511E	5 mm	1/8" BSP	£0.90
JGPM050512E	5 mm	1/4" BSP	£0.97
JGPM050611E	6 mm	1/8" BSP	£0.64
JGPM050612E	6 mm	1/4" BSP	£0.73
JGPM050811E	8 mm	1/8" BSP	£0.65
JGPM050812E	8 mm	1/4" BSP	£0.73
JGPM050813E	8 mm	3/8" BSP	£1.30
JGPM051012E	10 mm	1/4" BSP	£0.91
JGPM051013E	10 mm	3/8" BSP	£1.38
JGPM051014E	10 mm	1/2" BSP	£1.92
JGPM051213E	12 mm	3/8" BSP	£1.87
JGPM051214E	12 mm	1/2" BSP	£2.07



## STEM ADAPTOR MALE BSPT



2110

PART NUMBER	STEM OD	THREAD	PRICE
JGPM050401E	4 mm	1/8" BSPT	£0.64
JGPM050402E	4 mm	1/4" BSPT	£0.66
JGPM050501E	5 mm	1/8" BSPT	£0.64
JGPM050502E	5 mm	1/4" BSPT	£0.66
JGPM050601E	6 mm	1/8" BSPT	£0.64
JGPM050602E	6 mm	1/4" BSPT	£0.66
JGPM050801E	8 mm	1/8" BSPT	£0.65
JGPM050802E	8 mm	1/4" BSPT	£0.66
JGPM050803E	8 mm	3/8" BSPT	£1.04
JGPM051002E	10 mm	1/4" BSPT	£0.81
JGPM051003E	10 mm	3/8" BSPT	£1.04
JGPM051004E	10 mm	1/2" BSPT	£1.73
JGPM051203E	12 mm	3/8" BSPT	£1.19
JGPM051204E	12 mm	1/2" BSPT	£1.73



## BULKHEAD CONNECTOR



2110

PART NUMBER	TUBE OD	PRICE
JGPM1204E	4 mm	£3.37
JGPM1205E	5 mm	£3.26
JGPM1206E	6 mm	£3.30
JGPM1208E	8 mm	£3.49
JGPM1210E	10 mm	£5.29
JGPM1212E	12 mm	£6.71

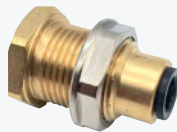
## BULKHEAD CONNECTOR



2110

PART NUMBER	TUBE OD	PRICE
JGRM1206	6 mm	£7.32
JGRM1208	8 mm	£7.50

## BRASS BULKHEAD ADAPTOR



2110

PART NUMBER	TUBE OD	PRICE
JGRM070612	6 mm	£6.36
JGRM070812	8 mm	£7.94



## FEMALE ADAPTOR – FLAT END FEMALE BSPP



2110

PART NUMBER	TUBE OD	THREAD	PRICE
JGPM450411E*	4 mm	1/8" BSPP	£1.73
JGPM450611E	6 mm	1/8" BSPP	£2.18
JGPM450612E*	6 mm	1/4" BSPP	£2.19
JGPM450812E*	8 mm	1/4" BSPP	£2.19
JGPM451015E*	10 mm	5/8" BSPP	£5.21

\* With thread seal, all other sizes no seal



## REDUCING STRAIGHT CONNECTOR



2110

PART NUMBER	TUBE OD	TUBE OD	PRICE
JGPM200604E	6 mm	4 mm	£2.00
JGPM200804E	8 mm	4 mm	£2.00
JGPM200806E	8 mm	6 mm	£2.07
JGPM201004E	10 mm	4 mm	£2.45
JGPM201006E	10 mm	6 mm	£2.43
JGPM201008E	10 mm	8 mm	£2.19
JGPM201208E	12 mm	8 mm	£2.95
JGPM201210E	12 mm	10 mm	£3.50



## REDUCER



2110

PART NUMBER	STEM OD	TUBE OD	PRICE
JGPM060504E	5 mm	4 mm	£1.15
JGPM060604E	6 mm	4 mm	£1.12
JGPM060605E	6 mm	5 mm	£1.28
JGPM060804E	8 mm	4 mm	£1.46
JGPM060805E	8 mm	5 mm	£1.46
JGPM060806E	8 mm	6 mm	£1.48
JGPM061006E	10 mm	6 mm	£1.42
JGPM061008E	10 mm	8 mm	£1.79
JGPM061208E	12 mm	8 mm	£1.99
JGPM061210E	12 mm	10 mm	£3.46



REDUCING ELBOW



2110

PART NUMBER	TUBE OD	TUBE OD	PRICE
JGPM210604E	6 mm	4 mm	£2.51
JGPM210804E	8 mm	4 mm	£2.51
JGPM210806E	8 mm	6 mm	£2.56
JGPM211004E	10 mm	4 mm	£3.50
JGPM211006E	10 mm	6 mm	£3.49
JGPM211008E	10 mm	8 mm	£3.49
JGPM211208E	12 mm	8 mm	£3.49
JGPM211210E	12 mm	10 mm	£3.60



STEM ADAPTOR  
TUBE TO HOSE



2110

PART NUMBER	STEM OD	HOSE ID	PRICE
JGPM250604E	6 mm	4 mm	£1.68
JGPM250806E	8 mm	6 mm	£1.76
JGPM251008E	10 mm	8 mm	£1.84



STEM ELBOW



2110

PART NUMBER	TUBE OD	STEM OD	PRICE
JGPM220404E	4 mm	4 mm	£1.76
JGPM220505E	5 mm	5 mm	£1.90
JGPM220606E	6 mm	6 mm	£1.92
JGPM220808E	8 mm	8 mm	£2.36
JGPM221010E	10 mm	10 mm	£3.30
JGPM221212E	12 mm	12 mm	£3.63



SINGLE BANJO BODY  
MALE BSP



2110

PART NUMBER	TUBE OD	THREAD	PRICE
JGRM150511E	5 mm	1/8" BSP	£2.54
JGRM150611E	6 mm	1/8" BSP	£2.69
JGRM150812E	8 mm	1/4" BSP	£2.87
JGRM151013E	10 mm	3/8" BSP	£4.11



ENLARGER



2110

PART NUMBER	STEM OD	TUBE OD	PRICE
JGPM130405E	5 mm	4 mm	£2.08

SINGLE BANJO STEM  
MALE BSPP



2110

PART NUMBER	STEM THREAD	PRICE
JGRM1611	1/8" BSPP	£5.18
JGRM1612	1/4" BSPP	£6.90
JGRM1613	3/8" BSPP	£9.74



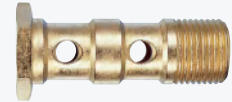
TWO-WAY DIVIDER



2110

PART NUMBER	TUBE OD	PRICE
JGRM2306E	6 mm	£3.39
JGRM2308E	8 mm	£3.37
JGRM2312E	12 mm	£6.06

DOUBLE BANJO STEM  
MALE BSP



2110

PART NUMBER	STEM THREAD	PRICE
JGRM1711	1/8" BSP	£6.47
JGRM1713	3/8" BSP	£16.21



TWO-WAY DIVIDER  
COMPACT FITTING



2110

PART NUMBER	TUBE OD	PRICE
JGPM2304E	4 mm	£2.73
JGPM2308E	8 mm	£3.18
JGPM2310E	10 mm	£3.86



PLUG



2110

PART NUMBER	STEM OD	PRICE
JGPM0804R	4 mm	£0.44
JGPM0805R	5 mm	£0.46
JGPM0806R	6 mm	£0.50
JGPM0808R	8 mm	£0.59
JGPM0810R	10 mm	£1.08
JGPM0812R	12 mm	£1.30

## IMPERIAL FITTINGS

Imperial fittings offered in sizes 5/32" to 5/8" are manufactured in grey acetal copolymer, making them especially suitable for applications involving foodstuffs and potable liquids.

They are however equally suitable for air and inert gases and can be used on N2/CO2 (installed in accordance with The British Beer and Pub Association Code of Practice) mixed gas dispense lines and in pneumatic applications and vacuum.



### STRAIGHT ADAPTOR MALE BSPT



2110

PART NUMBER	TUBE OD	THREAD	PRICE
JGPM010401S	5/32"	1/8" BSPT	£1.17
JGPM010402S	5/32"	1/4" BSPT	£1.23
JGPI010601S	3/16"	1/8" BSPT	£1.23
JGPI010602S	3/16"	1/4" BSPT	£1.54
JGPI010801S	1/4"	1/8" BSPT	£1.39
JGPI010802S	1/4"	1/4" BSPT	£1.53
JGPM010801S	5/16"	1/8" BSPT	£1.56
JGPM010802S	5/16"	1/4" BSPT	£1.62
JGPM010803S	5/16"	3/8" BSPT	£2.07
JGPI011202S	3/8"	1/4" BSPT	£2.53
JGPI011203S	3/8"	3/8" BSPT	£2.65
JGPI011603S	1/2"	3/8" BSPT	£3.49
JGPI011604S	1/2"	1/2" BSPT	£3.91



### STRAIGHT ADAPTOR MALE BSPP



2110

PART NUMBER	TUBE OD	THREAD	PRICE
JGPI010812S	1/4"	1/4" BSPP	£2.58
JGPI011212S	3/8"	1/4" BSPP	£2.84



### STRAIGHT ADAPTOR MALE NPTF



2110

PART NUMBER	TUBE OD	THREAD	PRICE
JGPM010421S	5/32"	1/8" NPTF	£1.17
JGPM010422S	5/32"	1/4" NPTF	£1.23
JGPI010621S	3/16"	1/8" NPTF	£1.17
JGPI010821S	1/4"	1/8" NPTF	£1.39
JGPI010822S	1/4"	1/4" NPTF	£1.53
JGPI010823S	1/4"	3/8" NPTF	£1.46
JGPM010821S	5/16"	1/8" NPTF	£1.56
JGPM010822S	5/16"	1/4" NPTF	£1.62
JGPM010823S	5/16"	3/8" NPTF	£2.07
JGPI011221S	3/8"	1/8" NPTF	£2.45
JGPI011222S	3/8"	1/4" NPTF	£2.52
JGPI011223S	3/8"	3/8" NPTF	£2.65
JGPI011224S	3/8"	1/2" NPTF	£3.51
JGPI011623S	1/2"	3/8" NPTF	£3.51
JGPI011624S	1/2"	1/2" NPTF	£3.91
JGPI012026S	5/8"	3/4" NPTF	£4.45



### EQUAL STRAIGHT ADAPTOR



2110

PART NUMBER	TUBE OD	PRICE
JGPM0404S	5/32"	£1.70
JGPI0406S	3/16"	£1.74
JGPI0408S	1/4"	£1.96
JGPM0408S	5/16"	£2.07
JGPI0412S	3/8"	£2.67
JGPI0416S	1/2"	£3.30



### REDUCING STRAIGHT ADAPTOR



2110

PART NUMBER	TUBE OD	TUBE OD	PRICE
JGPI200806S	1/4"	3/16"	£2.13
JGPM200804S	5/16"	5/32"	£2.03
JGPI201006S	5/16"	3/16"	£2.19
JGPI201008S	5/16"	1/4"	£2.19
JGPI201206S	3/8"	3/16"	£2.61
JGPI201208S	3/8"	1/4"	£2.65
JGPI201210S	3/8"	5/16"	£2.34
JGPI201610S	1/2"	5/16"	£3.07
JGPI201612S	1/2"	3/8"	£3.34



### EQUAL TEE



2110

PART NUMBER	TUBE OD	PRICE
JGPM0204S	5/32"	£2.68
JGPI0206S	3/16"	£2.73
JGPI0208S	1/4"	£3.07
JGPM0208S	5/16"	£3.14
JGPI0212S	3/8"	£3.68
JGPI0216S	1/2"	£4.45



### REDUCING TEE



2110

PART NUMBER	TUBE OD ENDS	TUBE OD BRANCH	PRICE
JGPI301208S	3/8"	1/4"	£4.06
JGPI301612S	1/2"	3/8"	£4.91





## EQUAL ELBOW



2110

PART NUMBER	TUBE OD	PRICE
JGPM0304S	5/32"	£1.89
JGPI0306S	3/16"	£2.03
JGPI0308S	1/4"	£2.30
JGPM0308S	5/16"	£2.45
JGPI0312S	3/8"	£3.45
JGPI0316S	1/2"	£4.18



## STEM ELBOW



2110

PART NUMBER	STEM OD	TUBE OD	PRICE
JGPM220404S	5/32"	5/32"	£2.03
JGPI220606S	3/16"	3/16"	£2.07
JGPI220808S	1/4"	1/4"	£2.07
JGPM220808S	5/16"	5/16"	£2.58
JGPI221212S	3/8"	3/8"	£3.80
JGPI221616S	1/2"	1/2"	£4.06



## SWIVEL ELBOW MALE BSPT



2110

PART NUMBER	TUBE OD	THREAD	PRICE
JGPI090601S	3/16"	1/8" BSPT	£4.90
JGPI090801S	1/4"	1/8" BSPT	£5.52
JGPI090802S	1/4"	1/4" BSPT	£5.64
JGPM090801S	5/16"	1/8" BSPT	£5.81
JGPM090802S	5/16"	1/4" BSPT	£5.85
JGPM090803S	5/16"	3/8" BSPT	£6.03
JGPI091202S	3/8"	1/4" BSPT	£7.34
JGPI091203S	3/8"	3/8" BSPT	£7.90
JGPI091603S	1/2"	3/8" BSPT	£8.99
JGPI091604S	1/2"	1/2" BSPT	£9.05



## SWIVEL ELBOW MALE NPTF



2110

PART NUMBER	TUBE OD	THREAD	PRICE
JGPI090621S	3/16"	1/8" NPTF	£4.90
JGPI090821S	1/4"	1/8" NPTF	£5.52
JGPI090822S	1/4"	1/4" NPTF	£5.64
JGPM090821S	5/16"	1/8" NPTF	£6.26
JGPM090822S	5/16"	1/4" NPTF	£5.85
JGPM090823S	5/16"	3/8" NPTF	£6.87
JGPI091222S	3/8"	1/4" NPTF	£7.34
JGPI091223S	3/8"	3/8" NPTF	£7.90
JGPI091623S	1/2"	3/8" NPTF	£8.99
JGPI091624S	1/2"	1/2" NPTF	£9.05



## STEM ADAPTOR MALE BSPT



2110

PART NUMBER	STEM OD	THREAD	PRICE
JGPI050601S	3/16"	1/8" BSPT	£1.21
JGPI050801S	1/4"	1/8" BSPT	£1.37
JGPI050802S	1/4"	1/4" BSPT	£1.41
JGPM050801S	5/16"	1/8" BSPT	£1.42
JGPM050802S	5/16"	1/4" BSPT	£1.44
JGPM050803S	5/16"	3/8" BSPT	£1.56
JGPI051202S	3/8"	1/4" BSPT	£1.46
JGPI051203S	3/8"	3/8" BSPT	£1.84
JGPI051603S	1/2"	3/8" BSPT	£1.87
JGPI051604S	1/2"	1/2" BSPT	£1.92



## FEMALE ADAPTOR – FLAT END FEMALE BSP



2110

PART NUMBER	TUBE OD	THREAD	PRICE
JGPI451014F	5/16"	1/2" BSP	£4.45
JGPI451015F	5/16"	5/8" BSP	£4.76
JGPI451213S	3/8"	3/8" BSP	£4.26
JGPI451214F	3/8"	1/2" BSP	£4.72
JGPI451215F	3/8"	5/8" BSP	£5.10
JGPI451613S	1/2"	3/8" BSP	£4.56
JGPI451615F	1/2"	5/8" BSP	£5.48



## PLUG



2110

PART NUMBER	STEM OD	PRICE
JGPM0804S	5/32"	£0.46
JGPI0806S	3/16"	£0.48
JGPI0808S	1/4"	£0.50
JGPM0808S	5/16"	£0.58
JGPI0812S	3/8"	£0.84
JGPI0816S	1/2"	£1.30



## BULKHEAD CONNECTOR



2110

PART NUMBER	TUBE OD	PRICE
JGPM1204S	5/32"	£3.00
JGPI1206S	3/16"	£3.51
JGPI1208S	1/4"	£3.65
JGPM1208S	5/16"	£5.31
JGPI1212S	3/8"	£5.44
JGPI1216S	1/2"	£9.28

● Items marked: minimum quantities may apply  
Please ask at time of order

## AIR & PNEUMATIC IMPERIAL FITTINGS



### STEM ADAPTOR TUBE TO HOSE



2110

PART NUMBER	STEM OD	HOSE ID	PRICE
JGPI250806S	1/4"	3/16"	£1.11
JGPI250808S	1/4"	1/4"	£1.15
JGPI250810S	1/4"	5/16"	£1.11
JGPI251006S	5/16"	3/16"	£1.17
JGPI251008S	5/16"	1/4"	£1.27
JGPM250808S	5/16"	5/16"	£1.38
JGPI251012S	5/16"	3/8"	£1.87
JGPI251208S	3/8"	1/4"	£1.89
JGPI251210S	3/8"	5/16"	£1.80
JGPI251212S	3/8"	3/8"	£1.91
JGPI251216S	3/8"	1/2"	£2.07
JGPI251612S	1/2"	3/8"	£2.22
JGPI251616S	1/2"	1/2"	£2.53



### ELBOW TUBE TO HOSE



2110

PART NUMBER	STEM OD	HOSE ID	PRICE
JGPI290808S	1/4"	1/4"	£1.61
JGPI290810S	1/4"	5/16"	£1.74
JGPI291008S	5/16"	1/4"	£1.61
JGPM290808S	5/16"	5/16"	£1.74
JGPI291208S	3/8"	1/4"	£2.07
JGPI291210S	3/8"	5/16"	£2.15

### TUBE INSERT



2110

PART NUMBER	TUBE ID	PRICE
JGTSI250S	1/4"	£0.17
JGTSI312S	5/16"	£0.20
JGTSI375S	3/8"	£0.23



### 3-WAY DIVIDER



2110

PART NUMBER	TUBE OD INLET	TUBE OD OUTLET	PRICE
JGPI491612S	1/2"	3/8"	£7.61

## BANJO FLOW CONTROLS

### DESCRIPTION

Banjo Flow Controls are designed for installation directly into cylinder ports to give precise control. They regulate the speed of pneumatic cylinders and other actuators.

John Guest Controls provide a neat compact assembly which can be orientated to a suitable position for the circuit arrangement prior to tightening. The design offers especially precise adjustment through the control needle which is captive within its housing.

Suitable for both soft metal and plastic tubing.

### SPECIFICATIONS

Temperature range	5°C to 70°C
Working pressure	0.5 bar to 10 bar
Materials	Acetal copolymer, brass, stainless steel and nitrile
Filtration	Air supply should be filtered to 50 micron

### BANJO FLOW CONTROL MALE BSP MANUAL ADJUSTMENT



2110

PART NUMBER	TUBE OD	THREAD	PRICE
JGCFM3604M5	4 mm	M5	£22.84
JGCFM360411	4 mm	1/8" BSP	£22.31
JGCFM360611	6 mm	1/8" BSP	£23.39
JGCFM360612	6 mm	1/4" BSP	£25.75
JGCFM360812	8 mm	1/4" BSP	£25.92

### BANJO FLOW CONTROL MALE BSP SCREWDRIVER SLOT



2110

PART NUMBER	TUBE OD	THREAD	PRICE
JGLM1503M3E	3 mm	M3	£11.94
JGBFC3604M5	4 mm	M5	£17.11
JGBFC360411	4 mm	1/8" BSP	£20.30
JGBFC360611	6 mm	1/8" BSP	£19.00
JGBFC360612	6 mm	1/4" BSP	£20.30
JGBFC360812	8 mm	1/4" BSP	£20.32
JGBFC361013	10 mm	3/8" BSP	£25.40
JGBFC361214	12 mm	1/2" BSP	£31.77

## THE WORLD-LEADING PLASTIC PUSH-FIT PLUMBING AND HEATING SYSTEM

Complete your installation in no time with JG Speedfit's wide range of fittings, pipe, tap connectors and service valves. Fast and simple to install, Speedfit creates a strong and reliable connection using a perfect blend of push-fit and multi-seal technology.

Fitted and demounted without using tools, Speedfit fittings are compatible with copper or plastic pipe and come with a 50-year guarantee\* as standard. We also offer a range of flexible plastic pipe in a variety of coils and straight lengths, which makes cabling in less accessible areas easier and reduces the number of joints or fittings needed. With push-fit tap connectors and service valves, installing and servicing fixtures and appliances is quick and easy too.

### FEATURES

- Instant push-fit connection and flexible pipe
- Collet with stainless steel teeth firmly grips pipe
- Dual O-Rings give a permanent leak-proof seal
- Twist and Lock increases the O-ring seal – a unique feature of JG Speedfit
- Lead free and non-toxic
- Corrosion free and no scale build up

### BENEFITS

- High performance and durable solution
- Install, demount and refit in seconds without tools
- Safe, flame-free installation, with no hot works
- Less labour intensive, especially in tight spaces
- Less joints, less leaks, less call backs
- Safer cooler surface temperature

### WARRANTY AND APPLICABLE STANDARDS



\*Available on our core range of fittings and pipe. Details of products included can be found online.

### SPECIFICATIONS

#### WORKING TEMPERATURES AND PRESSURES

Application	Usual Working Temperature	Max. Working Temperature	Max. Working Pressure
Cold water (indirect and direct main)	20°C	20°C	12 bar
Central heating	82°C	105°C, short term Malfunction at 114°C	3 bar
Hot water (including unvented cylinders)	65°C	95°C	6 bar

#### MAXIMUM TORQUE (BSP & BSPT)

Threads	Size	Maximum Torque
Plastic	1/2"	3.0 Nm
	3/4"	4.0 Nm
Brass	1/2"	4.0 Nm
	3/4"	5.0 Nm

For further technical details

... see pages 648 – 649, section 12

### TWIST & LOCK FITTINGS – Look for this symbol

- Grip & Seal cartridge with stainless steel teeth and main O-Ring seal
- Twist & Lock mechanism secures fitting and adds compression
- Compatible with hot & cold water and central heating systems, unless stated otherwise
- Suitable for use with plastic or copper pipe



### EQUAL STRAIGHT CONNECTOR



2140

PART NUMBER	TUBE OD	PRICE
JGPEM0410W	10 mm	£3.58
JGPEM0415W	15 mm	£2.66
JGPEM0422W	22 mm	£4.19
JGPEM0428W	28 mm	£10.57

Safely and securely connects two pipes of equal sizes



### REDUCING STRAIGHT COUPLER



2140

PART NUMBER	TUBE OD	TUBE OD	PRICE
JGPEM201510	15 mm	10 mm	£6.26
JGPEM202215	22 mm	15 mm	£7.41

Safely and securely connects two unequal metric pipe sizes



### EQUAL ELBOW



2140

PART NUMBER	TUBE OD	PRICE
JGPEM0310W	10 mm	£4.44
JGPEM0315W	15 mm	£3.17
JGPEM0322W	22 mm	£5.06
JGPEM0328W	28 mm	£12.35

Fast and reliably connects equal pipe sizes to form a 90° pipe bend



### STEM ELBOW



2140

PART NUMBER	TUBE OD	STEM OD	PRICE
JGPEM221010	10 mm	10 mm	£4.88
JGPEM221515	15 mm	15 mm	£6.21
JGPEM222222	22 mm	22 mm	£9.41

Provides a swivel type connection

Note: A Collet Cover cannot be used on a Speedfit end assembled with the stem of a 22 mm Stem Elbow



### EQUAL TEE



2140

PART NUMBER	TUBE OD	PRICE
JGPEM0210W	10 mm	£5.09
JGPEM0215W	15 mm	£4.58
JGPEM0222W	22 mm	£6.80
JGPEM0228W	28 mm	£17.48

Safely and securely connects three pipes of equal size



### REDUCING TEE



2140

PART NUMBER	TUBE OD	TUBE OD	TUBE OD	PRICE
JGPEM3015BW	15 mm	10 mm	10 mm	£7.67
JGPEM3015AW	15 mm	15 mm	10 mm	£6.88
JGPEM3022CW	15 mm	15 mm	22 mm	£7.67
JGPEM3022BW	22 mm	15 mm	15 mm	£7.67
JGPEM3022DW	22 mm	15 mm	22 mm	£7.67
JGPEM302210	22 mm	22 mm	10 mm	£7.67
JGPEM3022AW	22 mm	22 mm	15 mm	£7.67
JGPEM3028BW	28 mm	22 mm	22 mm	£19.25
JGPEM3028AW	28 mm	28 mm	22 mm	£19.25
JGPEM3028DW	28 mm	22 mm	28 mm	£19.24

Safely and securely connects three pipes of unequal size



### STEM TEE



2140

PART NUMBER	TUBE OD	TUBE OD	STEM OD	PRICE
JGPEM532210	22 mm	22 mm	10 mm	£7.26
JGPEM532215	22 mm	22 mm	15 mm	£7.27

Safely and securely connects Speedfit fittings directly onto a tee to create a swivel ended connection



### BENT TAP CONNECTOR



2140



### BENT TAP CONNECTOR BSP



2140

PART NUMBER	TUBE OD	THREAD	PRICE
JGPEMBTC154	15 mm	1/2" BSP	£6.59

With brass swivel nut and sealing washer



### STRAIGHT TAP CONNECTOR



2140



### STRAIGHT TAP CONNECTOR BSP



2140

PART NUMBER	TUBE OD	THREAD	PRICE
JGPEMSTC154	15 mm	1/2" BSP	£5.21
JGPEMSTC156	15 mm	3/4" BSP	£6.21
JGPEMSTC226	22 mm	3/4" BSP	£6.82

With brass swivel nut and sealing washer  
Simply connects pipework to a tap without tools (hand-tighten to tap)



### REDUCER



2140



### REDUCER



2140

PART NUMBER	TUBE OD	STEM OD	PRICE
JGPEM061510	15 mm	10 mm	£3.07
JGPEM062215	22 mm	15 mm	£4.01
JGPEM062815	28 mm	15 mm	£8.26
JGPEM062822	28 mm	22 mm	£8.97

Fast and securely connects two Speedfit fittings to reduce a line size

### STANDARD FITTINGS – Look for this symbol



- Grip & Seal cartridge with stainless steel teeth and main O-Ring seal
- Compatible with hot & cold water and central heating systems, unless stated otherwise
- Suitable for use with plastic or copper pipe



### FEMALE COUPLER TAP CONNECTOR



2140

#### FEMALE BSP

PART NUMBER	TUBE OD	THREAD	PRICE
JGPSE3210W	10 mm	1/2" BSP	£5.05
JGPSE3201W	15 mm	1/2" BSP	£2.91
JGPSE3203W	15 mm	3/4" BSP	£6.39
JGPSE3202W	22 mm	3/4" BSP	£4.42

Requires hand tightening only  
Note: Plastic threads are not as strong as metal threads



### STOP END



2140

PART NUMBER	TUBE OD	PRICE
JGPSE4610W	10 mm	£3.50
JGPSE4615W	15 mm	£3.58
JGPSE4622W	22 mm	£4.36

Safely and easily caps off pipework for a temporary or permanent installation  
Suitable for central heating systems



### PIPE INSERT FOR COMPRESSION FITTINGS



2140

PART NUMBER	TUBE OD	PRICE
JGTSM10N	10 mm	£0.51
JGTSM15N	15 mm	£0.51
JGTSM22N	22 mm	£0.62
JGTSM28N	28 mm	£0.96

To be used when connecting Speedfit Pipe to a compression fitting or fitting from another manufacturer.  
Suitable for hot and cold water and central heating systems.



### TANK CONNECTOR



2140

PART NUMBER	TUBE OD	PRICE
JGCM0715S	15 mm	£4.48
JGCM0722S	22 mm	£5.73
JGCM0728S	28 mm	£21.99

Suitable for cold water tanks only  
Maximum wall thickness of tank 4 mm. Requires hand tightening only

### PIPE INSERT SUPERSEAL



2140

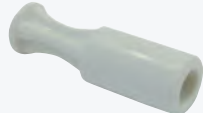
PART NUMBER	TUBE OD	PRICE
JGSTS10	10 mm	£0.55
JGSTS15	15 mm	£0.55
JGSTS22	22 mm	£0.72
JGSTS28	28 mm	£1.16

Only to be used with Speedfit Pipe and Speedfit fittings together, to give enhanced sealing. Creates a rigid connection and enhanced double seal when fitting a Speedfit pipe to a Speedfit fitting.

Suitable for hot and cold water and central heating systems.



### PLUG



2140

PART NUMBER	TUBE OD	PRICE
JGPL10	10 mm	£1.39
JGPL15	15 mm	£1.58
JGPL22	22 mm	£1.76
JGPL28	28 mm	£2.77

Safely plug a connection port on a Speedfit fitting, when not required. Suitable for central heating systems



2140

### PE-COPPER COUPLER

PART NUMBER	TUBE OD	TUBE OD	PRICE
JGJG601B	20 mm	15 mm	£11.51
JGJG603B	25 mm	15 mm	£17.24
JGJG602B	25 mm	22 mm	£13.77

Used to connect PE Pipe to copper or Speedfit Plumbing Pipe. Must not be buried directly into ground, soil, concrete or other substrates.  
Safely and securely connects MDPE to copper or Speedfit pipe (inserts required).

## ACETAL FITTINGS FOR DRINKS AND OTHER POTABLE WATER

### STANDARD FITTINGS – Look for this symbol

CM range of metric size fittings are manufactured in acetal. With a food grade EPDM O-Ring, they have been developed for the water industry but are equally suitable for other potable liquids. They are also recommended for intermittent hot water applications. The CM Range is NOT suitable for compressed air and vacuum applications.



### ADAPTOR FEMALE



2140

PART NUMBER	TUBE OD	THREAD	PRICE
JGCM011514S	15 mm	1/2" BSP	£2.30
JGCM012216S	22 mm	3/4" BSP	£3.43



### TAP ADAPTOR FEMALE



2110

PART NUMBER	TUBE OD	THREAD	PRICE
JGCM321014E	10 mm	1/2" BSP	£3.07



SUITABLE FOR CENTRAL HEATING SYSTEMS

**STANDARD FITTINGS – Look for this symbol**

- Grip & Seal cartridge with stainless steel teeth and main O-Ring seal
- Compatible with hot & cold water and central heating systems, unless stated otherwise
- Suitable for use with plastic or copper pipe



**BRASS STOP VALVE  
BODY AND HEAD DZR BRASS**

2140

PART NUMBER	TUBE OD	PRICE
JG15BSC	15 mm	£28.35

Not suitable for potable water  
Durable brass bodied screw-down mains stop valve

**1/4 TURN VALVES – Look for this symbol**

These valves have been designed to allow temporary servicing of downstream equipment and must only be used in the fully open or fully closed position.



**DO NOT use these valves:**

- In a partially open position to control flow
- To provide a permanent termination
- Without tubing assembled or plugged (or threaded connections sealed)
- As a tap or "faucet"



**BRASS DRAIN COCK  
DZR BRASS**

2140

PART NUMBER	TUBE OD	PRICE
JG15BDC	15 mm	£12.16

Speedfit Drain Cocks cannot be used where collet covers are fitted.  
They can be used with a standard fitting fitted with a collet clip.  
Stem ended drain off valve provides an ideal drain down point.



**BRASS SERVICE VALVE**



2140

PART NUMBER	TUBE OD	PRICE
JG15HSV-BRA	15 mm	£20.08

Durable brass service valve allows isolation of the appliance for maintenance



**SERVICE VALVE  
WITH TAP CONNECTOR  
BSP BRASS CHROME PLATED**



2140

PART NUMBER	TUBE OD	THREAD	PRICE
JG15PTS	15 mm	1/2" BSP	£21.60
JG22PTS	22 mm	3/4" BSP	£50.22

Chrome finished, one piece combined service valve and tap connector



**SERVICE VALVE  
BRASS CHROME PLATED**



2140

PART NUMBER	TUBE OD	PRICE
JG10HSV	10 mm	£18.16
JG15HSV	15 mm	£21.76
JG22HSV	22 mm	£48.86

Chrome finished service valve allows isolation of the appliance for maintenance



**BALL VALVE  
BRASS CHROME PLATED**



2140

PART NUMBER	TUBE OD	PRICE
JG10BV	10 mm	£25.55
JG15BV	15 mm	£27.94
JG22BV	22 mm	£55.79

Each valve has red and blue indices  
Chrome finished service valve with isolating handle allows isolation of the appliance for maintenance.

Also available ...



**John Guest manifolds**

... for more information,  
please contact our technical sales team

**NOT SUITABLE FOR CENTRAL HEATING SYSTEMS**

**STANDARD FITTINGS – Look for this symbol**

- Grip & Seal cartridge with stainless steel teeth and main O-Ring seal
- Compatible with hot & cold water and central heating systems, unless stated otherwise
- Suitable for use with plastic or copper pipe



**WASHING MACHINE / APPLIANCE TAP  
BSP**



2140

PART NUMBER	TUBE OD	THREAD	PRICE
JG15APT	15 mm	3/4" BSP	£8.77

Hot and Cold water only, 65°C maximum.  
For maximum torque figures on plastic thread,  
please see Technical Checklist.  
Quickly connects an appliance to the supply with  
integrated 1/4 turn shut off valve.



**PLASTIC SERVICE VALVE**



2140

PART NUMBER	TUBE OD	PRICE
JG15SV	15 mm	£10.30
JG22SV	22 mm	£16.54

Hot and Cold water only, 65°C maximum  
Fast to connect inline service valve allows isolation of the  
appliance for maintenance



**STOP VALVE**



2140

PART NUMBER	TUBE OD	PRICE
JG15STV/2	15 mm	£12.13
JG22STV/2	22 mm	£18.41

Hot and Cold water only, 65°C maximum  
Quick to connect screw down mains stop valve



**EMERGENCY SHUT-OFF TAP**



2140

PART NUMBER	TUBE OD	PRICE
JG15ESOT	15 mm	£9.69

Hot and Cold water only, 65°C maximum  
Slimline 1/4 turn shut off valve for emergency isolation  
to appliances

**1/4 TURN VALVES – Look for this symbol**

These valves have been designed to allow temporary servicing of downstream equipment and must only be used in the fully open or fully closed position.



**DO NOT use these valves:**

- In a partially open position to control flow
- To provide a permanent termination
- Without tubing assembled or plugged (or threaded connections sealed)
- As a tap or "faucet"



**DOUBLE CHECK VALVE**



2140

PART NUMBER	TUBE OD	PRICE
JG15DCV	15 mm	£18.94

Hot and Cold water only, 65°C maximum  
Fast to connect double check valve for fluid category 3  
backflow prevention



**SINGLE CHECK VALVE**



2140

PART NUMBER	TUBE OD	PRICE
JG06SCV	6 mm	£9.66
JG10SCV	10 mm	£14.31
JG12SCV	12 mm	£15.42



**SINGLE CHECK VALVE  
IMPERIAL**



2120

PART NUMBER	TUBE OD	PRICE
JG38SCV	3/8"	£20.73



**SHUT-OFF VALVE  
LONG HANDLE**



2110

PART NUMBER	TUBE OD	PRICE
JGPISV0412S	3/8"	£16.37



**SHUT-OFF VALVE  
LONG HANDLE  
WITH MOUNTING CLIP**



2110

PART NUMBER	TUBE OD	PRICE
JGPISV04KIT	3/8"	£18.59

## FLEXI HOSE

### FLEXI HOSE 300 MM LENGTH



PART NUMBER	TUBE OD	TUBE OD	PRICE
JGFLX33	15 mm	10 mm	£8.50
JGFLX17	15 mm	15 mm	£12.34
JGFLX26	22 mm	22 mm	£15.14

### 500 MM LENGTH

JGFLX21	15 mm	15 mm	£18.14
JGFLX27	22 mm	22 mm	£20.64

Not suitable for central heating systems  
Hot and cold water only, 65°C maximum

### FEMALE BSP FLEXI HOSE WITH SERVICE VALVE 300 MM LENGTH



PART NUMBER	TUBE OD	THREAD	PRICE
JGFLX24	15 mm	1/2" BSP	£28.64
JGFLX37**	15 mm	1/2" BSP	£18.96
JGFLX25*	22 mm	3/4" BSP	£53.80

### 500 MM LENGTH

JGFLX31	15 mm	1/2" BSP	£31.32
JGFLX38	15 mm	3/4" BSP	£34.45
JGFLX32	22 mm	3/4" BSP	£58.67

\*Full Bore. Not suitable for central heating systems

### FEMALE BSP FLEXI HOSE 300 MM LENGTH



PART NUMBER	TUBE OD	THREAD	PRICE
JGFLX34	10 mm	1/2" BSP	£11.03
JGFLX35	15 mm	3/8" BSP	£11.03
JGFLX15	15 mm	1/2" BSP	£9.99
JGFLX16	15 mm	3/4" BSP	£12.59
JGFLX22	22 mm	3/4" BSP	£13.71

### 500 MM LENGTH

JGFLX18	15 mm	1/2" BSP	£14.44
JGFLX20	15 mm	3/4" BSP	£16.28
JGFLX19	22 mm	3/4" BSP	£17.28
JGFLX23	22 mm	3/4" BSP	£25.05

\*Full Bore. Not suitable for central heating systems

### FEMALE FLEXI HOSE ELBOW PATTERN 300 MM LENGTH



PART NUMBER	TUBE OD	THREAD	PRICE
JGFLX36	15 mm	1/2" BSP	£13.31

Not suitable for central heating systems  
Hot and cold water only, 65°C maximum

### MALE FLEXI HOSE FOR MONOBLOCK MIXERS 300 MM LENGTH



PART NUMBER	TUBE OD	THREAD	PRICE
JGFLX29	15 mm	M12	£18.85

Not suitable for central heating systems  
Hot and cold water only, 65°C maximum  
Price per pair

## BARRIER PIPE

### SPEEDFIT BARRIER PIPE COILS



PART NUMBER	TUBE OD	COIL LENGTH	PRICE
JG10BPEX-25	10 mm	25 m	£68.87
JG10BPEX-50	10 mm	50 m	£123.96
JG10BPEX-10	10 mm	100 m	£247.87
JG15BPEX-25	15 mm	25 m	£71.64
JG15BPEX-50	15 mm	50 m	£143.19
JG15BPEX-10	15 mm	100 m	£286.41
JG15BPEX-12	15 mm	120 m	£344.24
JG15BPEX-15	15 mm	150 m	£429.61
JG22BPEX-25	22 mm	25 m	£140.45
JG22BPEX-50	22 mm	50 m	£280.87

Suitable for central heating systems  
Price per coil

The pipe has an inner barrier to stop the ingress of atmosphere

### SPEEDFIT BARRIER PIPE STRAIGHT LENGTHS



PART NUMBER	TUBE OD	STRAIGHT LENGTH	PRICE
JG15BPEX-2L	15 mm	2 m	£5.73
JG15BPEX-3L	15 mm	3 m	£8.60
JG15BPEX-6L	15 mm	6 m	£17.18
JG22BPEX-2L	22 mm	2 m	£11.26
JG22BPEX-3L	22 mm	3 m	£16.88
JG22BPEX-6L	22 mm	6 m	£33.71
JG28BPEX-3L	28 mm	3 m	£23.14

Suitable for central heating systems  
Price per length

The pipe has an inner barrier to stop the ingress of atmosphere

SUITABILITY	FEATURES / BENEFITS
<ul style="list-style-type: none"> <li>• Water purification</li> <li>• Water conditioners</li> <li>• Ice makers</li> <li>• Misting systems</li> </ul>	<ul style="list-style-type: none"> <li>• WRAS approved product</li> <li>• FDA approved</li> <li>• NSF 51 &amp; 61</li> <li>• Strong</li> <li>• Good flexibility</li> <li>• Broad chemical compatibility</li> </ul>
SPECIFICATIONS	
Maximum temperature	70°C
Pressure rating	Values given are based on the short term burst pressure of JGPE hose at 20°C using a 3:1 safety factor. Note any increase in temperature above 20°C will result in a decline in working pressure values.
Construction	Linear low density polyethylene



Supplied in full coils only

## LLDPE TUBE METRIC

### JGPE – NATURAL 100 METRE COILS



2120

PART NUMBER	mm	mm	bar	PRICE per coil
JGPE04025N	4.0	2.5	15	£34.84
JGPE0604N	6.0	4.0	15	£38.55
JGPE0806N	8.0	6.0	10	£60.28
JGPE1007N	10.0	7.0	10	£86.24
JGPE1209N	12.0	9.0	10	£98.54

### JGPE – BLACK 100 METRE COILS



2120

PART NUMBER	mm	mm	bar	PRICE per coil
JGPE04025E	4.0	2.5	15	£34.82
JGPE0604E	6.0	4.0	15	£38.55
JGPE0806E	8.0	6.0	10	£60.28
JGPE1007E	10.0	7.0	10	£86.24
JGPE1209E	12.0	9.0	10	£98.54

### JGPE – RED 100 METRE COILS



2120

PART NUMBER	mm	mm	bar	PRICE
JGPE04025R	4.0	2.5	15	£34.82
JGPE0604R	6.0	4.0	15	£38.55
JGPE0806R	8.0	6.0	10	£60.26
JGPE1007R	10.0	7.0	10	£86.25
JGPE1209R	12.0	9.0	10	£98.54
JGPE1512R	15.0	12.0	10	£152.63

### JGPE – WHITE 100 METRE COILS



2120

PART NUMBER	mm	mm	bar	PRICE per coil
JGPE0425W	4.0	2.5	15	£34.82
JGPE0604W	6.0	4.0	15	£38.55
JGPE0806W	8.0	6.0	10	£60.26

### JGPE – BLUE 100 METRE COILS



2120

PART NUMBER	mm	mm	bar	PRICE
JGPE04025B	4.0	2.5	15	£34.84
JGPE0604B	6.0	4.0	15	£38.55
JGPE0806B	8.0	6.0	10	£60.28
JGPE1007B	10.0	7.0	10	£86.25
JGPE1209B	12.0	9.0	10	£98.54
JGPE1512B	15.0	12.0	10	£152.61

### JGPE – GREEN 100 METRE COILS



2120

PART NUMBER	mm	mm	bar	PRICE per coil
JGPE0806G	8.0	6.0	15	£60.26
JGPE1512G	15.0	12.0	10	£152.63

### JGPE – YELLOW 100 METRE COILS



2120

PART NUMBER	mm	mm	bar	PRICE per coil
JGPE0604Y	6.0	4.0	15	£38.55



SUITABILITY	FEATURES / BENEFITS
<ul style="list-style-type: none"> <li>Water purification</li> <li>Water conditioners</li> <li>Ice makers</li> <li>Misting systems</li> </ul>	<ul style="list-style-type: none"> <li>WRAS approved product</li> <li>FDA approved</li> <li>NSF 51 &amp; 61</li> <li>Strong</li> <li>Good flexibility</li> <li>Broad chemical compatibility</li> </ul>
SPECIFICATIONS	
Maximum temperature	70°C
Pressure rating	Values given are based on the short term burst pressure of JGPE hose at 20°C using a 3:1 safety factor. Note any increase in temperature above 20°C will result in a decline in working pressure values.
Construction	Linear low density polyethylene



Supplied in full coils only

## LLDPE TUBE IMPERIAL

### JGPE – NATURAL 250 FT. COILS



2120

PART NUMBER	ins	ins	bar	PRICE per coil
JGPE1/2N	1/2	0.375	10	£83.02

### 500 FT. COILS

JGPE1/4N	1/4	0.170	15	£55.44
JGPE5/16N	5/16	0.187	15	£92.39
JGPE3/8N	3/8	0.250	10	£107.78

### JGPE – BLACK 250 FT. COILS



2120

PART NUMBER	ins	ins	bar	PRICE per coil
JGPE1/2E	1/2	0.375	10	£86.24

### 500 FT. COILS

JGPE1/4E	1/4	0.170	15	£58.52
JGPE5/16E	5/16	0.187	15	£95.46
JGPE3/8E	3/8	0.250	10	£117.01

### JGPE – RED 250 FT. COILS



2120

PART NUMBER	ins	ins	bar	PRICE per coil
JGPE1/2R	1/2	0.375	10	£86.25

### 500 FT. COILS

JGPE1/4R	1/4	0.170	15	£58.50
JGPE5/16R	5/16	0.187	15	£95.46
JGPE3/8R	3/8	0.250	10	£117.01

### JGPE – WHITE 250 FT. COILS



2120

PART NUMBER	ins	ins	bar	PRICE per coil
JGPE1/2W	1/2	0.375	10	£86.25

### 500 FT. COILS

JGPE1/4W	1/4	0.170	15	£58.52
JGPE5/16W	5/16	0.187	15	£95.46
JGPE3/8W	3/8	0.250	10	£117.02

### JGPE – BLUE 250 FT. COILS



2120

PART NUMBER	ins	ins	bar	PRICE per coil
JGPE1/2B	1/2	0.375	10	£86.25

### 500 FT. COILS

JGPE1/4B	1/4	0.170	15	£58.50
JGPE5/16B	5/16	0.187	15	£95.46
JGPE3/8B	3/8	0.250	10	£117.01

### JGPE – GREEN 500 FT. COILS



2120

PART NUMBER	ins	ins	bar	PRICE per coil
JGPE1/4G	1/4	0.170	15	£64.71
JGPE3/8G	3/8	0.250	10	£126.24

### JGPE – YELLOW 500 FT. COILS



2120

PART NUMBER	ins	ins	bar	PRICE per coil
JGPE1/4Y	1/4	0.170	15	£64.71
JGPE3/8Y	3/8	0.250	10	£126.25



## SELECT THE PIPE AND DIAMETER FOR YOUR APPLICATION BASED ON THE REQUIRED FLOW AGAINST PRESSURE DROP

### Pipe flow rates

Maximum recommended flow rates according to ISO 4414

Working Pressure		Aluminium Pipe						Nylon Pipe			
kPa	(bar)	15 mm	22 mm	28 mm	35 mm	42 mm	54 mm	10 mm	15 mm	22 mm	28 mm
20	0.20	0.86 l/s	2.11 l/s	3.57 l/s	9.81 l/s	15.0 l/s	28.0 l/s	0.33 l/s	0.79 l/s	2.0 l/s	2.9 l/s
40	0.40	1.32 l/s	3.27 l/s	5.49 l/s	10.2 l/s	17.0 l/s	43.0 l/s	0.51 l/s	1.21 l/s	3.0 l/s	4.5 l/s
63	0.63	1.80 l/s	4.38 l/s	7.39 l/s	13.7 l/s	22.9 l/s	59.0 l/s	0.69 l/s	1.64 l/s	4.1 l/s	6.0 l/s
80	0.80	2.08 l/s	5.19 l/s	8.91 l/s	16.5 l/s	27.4 l/s	70.0 l/s	0.81 l/s	1.90 l/s	4.8 l/s	7.2 l/s
100	1.00	2.46 l/s	6.14 l/s	10.43 l/s	19.3 l/s	32.0 l/s	82.0 l/s	0.97 l/s	2.25 l/s	5.7 l/s	8.4 l/s
125	1.25	2.93 l/s	7.25 l/s	12.05 l/s	22.4 l/s	37.9 l/s	97.0 l/s	1.14 l/s	2.68 l/s	6.7 l/s	9.8 l/s
160	1.60	3.59 l/s	8.55 l/s	14.67 l/s	27.5 l/s	46.0 l/s	120.0 l/s	1.38 l/s	3.28 l/s	8.0 l/s	11.7 l/s
200	2.00	4.25 l/s	10.78 l/s	18.13 l/s	33.0 l/s	55.4 l/s	140.0 l/s	1.64 l/s	3.88 l/s	9.9 l/s	14.8 l/s
250	2.50	5.20 l/s	12.58 l/s	21.53 l/s	39.9 l/s	66.9 l/s	170.0 l/s	2.03 l/s	4.75 l/s	11.7 l/s	17.3 l/s
315	3.15	6.33 l/s	15.62 l/s	26.47 l/s	48.5 l/s	82.1 l/s	210.0 l/s	2.43 l/s	5.78 l/s	14.3 l/s	21.7 l/s
400	4.00	7.84 l/s	19.13 l/s	32.33 l/s	59.9 l/s	100.0 l/s	260.0 l/s	3.00 l/s	7.15 l/s	17.7 l/s	26.3 l/s
500	5.00	9.46 l/s	23.65 l/s	39.67 l/s	74.4 l/s	124.3 l/s	320.0 l/s	3.73 l/s	8.65 l/s	22.0 l/s	32.2 l/s
630	6.30	12.26 l/s	29.20 l/s	49.47 l/s	90.0 l/s	150.0 l/s	390.0 l/s	4.57 l/s	11.15 l/s	27.0 l/s	40.2 l/s
800	8.00	15.10 l/s	36.75 l/s	61.73 l/s	115.0 l/s	192.9 l/s	490.0 l/s	5.70 l/s	13.75 l/s	34.0 l/s	50.3 l/s
1000	10.00	17.97 l/s	45.30 l/s	75.47 l/s	141.3 l/s	238.6 l/s	610.0 l/s	7.10 l/s	16.43 l/s	42.0 l/s	61.7 l/s
1250	12.50	22.60 l/s	56.37 l/s	96.40 l/s	178.8 l/s	297.1 l/s	750.0 l/s	8.27 l/s	20.50 l/s	52.3 l/s	77.5 l/s
1600	16.00	29.20 l/s	71.47 l/s	120.00 l/s	223.8 l/s	375.7 l/s	950.0 l/s	10.70 l/s	26.50 l/s	66.3 l/s	97.5 l/s

Note: The flow rates are based on 10% pressure drops for 10 and 15 mm pipe sizes and 5% for 22, 28, 35, 42 and 54 mm pipe sizes

### John Guest Air working pressures and temperatures when used with the following pipe materials

Diameter	Temperature	Rigid Nylon Pipe	Powder Coated Aluminium Pipe	Copper Pipe	LLDPE Pipe
4 mm	-20°C	N/A	N/A	N/A	10 bar
	23°C	N/A	N/A	N/A	10 bar
	65°C	N/A	N/A	N/A	7 bar
6 mm	-20°C	N/A	N/A	N/A	10 bar
	23°C	N/A	N/A	N/A	10 bar
	65°C	N/A	N/A	N/A	7 bar
8 mm	-20°C	N/A	N/A	N/A	10 bar
	23°C	N/A	N/A	N/A	10 bar
	65°C	N/A	N/A	N/A	7 bar
10 mm	-20°C	N/A	N/A	N/A	10 bar
	23°C	N/A	N/A	N/A	10 bar
	65°C	N/A	N/A	N/A	7 bar
12 mm	-20°C	10 bar	N/A	N/A	10 bar
	23°C	10 bar	N/A	N/A	10 bar
	65°C	7 bar	N/A	N/A	7 bar
15 mm	-20°C	10 bar	10 bar	10 bar	10 bar
	23°C	10 bar	10 bar	10 bar	10 bar
	65°C	7 bar	7 bar	7 bar	7 bar
18 mm	-20°C	10 bar	10 bar	N/A	N/A
	23°C	10 bar	10 bar	N/A	N/A
	65°C	7 bar	7 bar	N/A	N/A
22 mm	-20°C	10 bar	10 bar	10 bar	N/A
	23°C	10 bar	10 bar	10 bar	N/A
	65°C	7 bar	7 bar	7 bar	N/A
28 mm	-20°C	10 bar	10 bar	10 bar	N/A
	23°C	10 bar	10 bar	10 bar	N/A
	65°C	7 bar	7 bar	7 bar	N/A

Note: The above pressures and temperatures are in relation to John Guest Air fittings when used with the pipe materials listed

## SharkBite Air working pressures and temperatures when used with the following pipe materials

Diameter	Temperature	Nylon Pipe	PEXa Pipe	Anodised Aluminium Pipe	Powder Coated Aluminium Pipe	Copper Pipe	LLDPE Pipe
10 mm	-20°C	15 bar	N/A	N/A	N/A	16 bar	N/A
	23°C	15 bar	N/A	N/A	N/A	16 bar	N/A
	65°C	8 bar	N/A	N/A	N/A	10 bar	N/A
15 mm	-20°C	15 bar	16 bar	20 bar	20 bar	20 bar	10 bar
	23°C	15 bar	16 bar	20 bar	20 bar	20 bar	10 bar
	65°C	8 bar	9 bar	16 bar	16 bar	16 bar	7 bar
22 mm	-20°C	14 bar	16 bar	20 bar	20 bar	20 bar	N/A
	23°C	14 bar	16 bar	20 bar	20 bar	20 bar	N/A
	65°C	7 bar	9 bar	16 bar	16 bar	16 bar	N/A
28 mm	-20°C	14 bar	16 bar	20 bar	20 bar	20 bar	N/A
	23°C	14 bar	16 bar	20 bar	20 bar	20 bar	N/A
	65°C	7 bar	9 bar	16 bar	16 bar	16 bar	N/A
35 mm	-20°C	N/A	N/A	20 bar	20 bar	20 bar	N/A
	23°C	N/A	N/A	20 bar	20 bar	20 bar	N/A
	65°C	N/A	N/A	16 bar	16 bar	16 bar	N/A
42 mm	-20°C	N/A	N/A	20 bar	20 bar	20 bar	N/A
	23°C	N/A	N/A	20 bar	20 bar	20 bar	N/A
	65°C	N/A	N/A	16 bar	16 bar	16 bar	N/A
54 mm	-20°C	N/A	N/A	18 bar	18 bar	18 bar	N/A
	23°C	N/A	N/A	18 bar	18 bar	18 bar	N/A
	65°C	N/A	N/A	14 bar	14 bar	14 bar	N/A

Note: The above pressures and temperatures are in relation to Sharkbite Air fittings when used with the pipe materials listed Ball Valves. 16 bar @ 20°C max

### System pipe sizing

To determine the correct size of pipe required for a closed loop network, select the flow and pipe length for your application from the tables. Velocity is not used in the calculation. The calculations show the data for an 8 and 16 bar system with SharkBite Anodised Aluminium system pipe, further data is available on request.

#### 8 bar network pressure using hard anodised pipe with a maximum 0.24 bar (3%) pressure loss

Flow		Length (m)									
Nm <sup>3</sup> /H	Nm <sup>3</sup> /min	50	100	150	300	500	750	1000	1300	1600	2000
10	0.2	15	15	15	22	22	22	22	22	22	28
30	0.5	22	22	22	28	28	28	35	35	35	35
50	0.8	22	28	28	28	35	35	35	42	42	42
70	1.2	22	28	28	35	35	42	42	42	42	54
100	1.7	28	35	35	42	42	42	54	54	54	54
150	2.5	35	35	42	42	54	54	54	54		
250	4.2	35	42	42	54	54					
350	5.8	42	54	54	54						
500	8.3	54	54	54							
750	12.5	54									

#### 16 bar network pressure using hard anodised pipe with a maximum 0.49 bar (3%) pressure loss

Flow		Length (m)									
Nm <sup>3</sup> /H	Nm <sup>3</sup> /min	50	100	150	300	500	750	1000	1300	1600	2000
10	0.2	15	15	15	15	15	15	22	22	22	22
30	0.5	15	15	22	22	22	22	28	28	28	28
50	0.8	22	22	22	22	28	28	28	28	35	35
70	1.2	22	22	22	28	28	35	35	35	35	35
100	1.7	22	22	28	28	35	35	35	42	42	42
150	2.5	28	28	28	35	35	42	42	42	54	54
250	4.2	28	35	35	42	42	54	54	54	54	54
350	5.8	35	35	42	42	54	54	54			
500	8.3	35	42	42	54	54					
750	12.5	42	54	54	54						
1000	16.7	54	54	54							
1250	20.8	54	54								
1500	25.0	54									
1750	29.2	54									
2000	33.3	54									