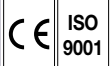




Plastic valves & fittings for industry

- Ball valves pages 242 to 243
- Butterfly valves page 243
- Knife gate valve page 244
- Membrane valves page 244
- Pneumatic actuated valves
 - Actuators page 244
 - Limit switch box page 244
 - Pneumatic actuated ball valves page 245
 - Pneumatic actuated butterfly valves page 246
 - Pneumatic actuated membrane valves page 247
- Solenoid valves page 247
- Electric actuated valves
 - Electric actuated ball valves page 248
 - Electric actuated butterfly valves page 249
- Check valves
 - Check valves - Double union construction page 250
 - Foot valves page 250
 - Disc check valve page 250
 - Swing check valves page 251
- Air vents page 251
- Y-strainer page 251
- Pressure reducing valves page 252
- Overflow valves page 252
- Control - Instrumentation
 - Float valve page 253
 - Water jet pump page 253
 - Dosing valve page 253
 - Pressure gauge separators page 253
 - Sight glass page 254
 - Level gauge page 254
 - Flowmeter page 254
- Fittings and couplings
 - PP cam-lock couplings page 255
 - PP Guillemin symmetrical couplings page 255
 - PVC-U fittings pages 256 to 258
 - PP fittings pages 258 to 259
- Chemical resistance manual page 260

97/23/EC Directive - Risk category I / module A.



W1 - PVC-U

PVC-U body & ball - TPV seat - EPDM gaskets - ABS lever - Full bore -

Supplied with solvent cement socket ends as standard (option for threaded unions) - PS: 10 bar - TS: 0°C/+55°C.



d (mm)	20	25	32	40	50	63	75	90	110
DN	15	20	25	32	40	50	65	80	100
compulsory pack code	72	60	45	24	16	12	1	1	1
	5100WC015	5100WC020	5100WC025	5100WC032	5100WC040	5100WC050	5100WC065	5100WC080	5100WC100
spare threaded union	ECL1CT02	ECL1CT03	ECL1CT04	ECL1CT05	ECL1CT06	ECL1CT07	ECL1CT08	ECL1CT09	ECL1CT10

KVS1 - PVC-U

Microvalve - PVC-U body & ball - TPV seat - EPDM gaskets - Full bore -

Threaded connections & 8/10/12 fluted nozzle - PS: 10 bar - TS: 0°C/+55°C.



Ø	1/4"	1/2"
code	5100KT00	5100KT02

CL1 - PVC-U

PVC-U body & ball - PTFE seats - EPDM or FKM gaskets - ABS lever - Full bore - Anti-UV protection -

Supplied with solvent cement socket ends as standard (option for threaded unions) - PS: 10 bar - TS: 0°C/+55°C.



d (mm)	20	25	32	40	50	63	75	90	110
DN	15	20	25	32	40	50	65	80	100
EPDM gaskets code	5100SC015	5100SC020	5100SC025	5100SC032	5100SC040	5100SC050	5100SC065	5100SC080	5100SC100
FKM gaskets code	5101SC015	5101SC020	5101SC025	5101SC032	5101SC040	5101SC050	5101SC065	5101SC080	5101SC100

CL1 - PP

PP body & ball - PTFE seats - Full bore - EPDM or FKM gaskets - ABS lever - Supplied with solvent cement socket ends as standard (option for threaded unions) - PS: 10 bar up to DN65, 6 bar above - TS: +10°C/+80°C.



d (mm)	20	25	32	40	50	63	75	90	110
DN	15	20	25	32	40	50	65	80	100
EPDM gaskets code	5110SC015	5110SC020	5110SC025	5110SC032	5110SC040	5110SC050	5110SC065	5110SC080	5110SC100
FKM gaskets code	5111SC015	5111SC020	5111SC025	5111SC032	5111SC040	5111SC050	5111SC065	5111SC080	5111SC100

Spare PE electrofusion welding male socket

For CL1 - PVC-U & CL1 - PP.



d (mm)	15	20	25	32	40	50	65	80	100
code	ECL1EP020	ECL1EP025	ECL1EP032	ECL1EP040	ECL1EP050	ECL1EP063	ECL1EP075	ECL1EP090	ECL1EP110

Spare PVC-U extension stem

For CL1 - PVC-U & CL1 - PP - 100 mm.



d (mm)	15	20	25	32	40	50	65	80	100
code	065541	065542	065543	065544	065545	065546	065547	065548	065549

C200 - PVC-U

PVC-U body, ball & stem - PTFE seats - EPDM or FKM gaskets - ABS lever - Supplied with solvent cement socket ends as standard (option for threaded unions) - PS: 16 bar - TS: 0°C/+60°C.



d (mm)	16	20	25	32	40	50	63
DN	10	15	20	25	32	40	50
EPDM gaskets code	5100AC010	5100AC015	5100AC020	5100AC025	5100AC032	5100AC040	5100AC050
FKM gaskets code	5101AC010	5101AC015	5101AC020	5101AC025	5101AC032	5101AC040	5101AC050
spare threaded union	-	EC20CT02	EC20CT03	EC20CT04	EC20CT05	EC20CT06	EC20CT07

C200 - PP

PP body, ball & stem - PTFE seats - EPDM or FKM gaskets - ABS lever - Supplied with solvent cement socket ends - PS: 10 bar - TS: +10°C/+80°C.



d (mm)	16	20	25	32	40	50	63
DN	10	15	20	25	32	40	50
EPDM gaskets code	5110AC010	5110AC015	5110AC020	5110AC025	5110AC032	5110AC040	5110AC050
FKM gaskets code	5111AC010	5111AC015	5111AC020	5111AC025	5111AC032	5111AC040	5111AC050

Spare PE electrofusion welding male socket

For C200 - PVC-U & C200 - PP.



d (mm)	15	20	25	32	40	50
code	EC20EP020	EC20EP025	EC20EP032	EC20EP040	EC20EP050	EC20EP063

Butterfly valves

97/23/EC Directive - Risk category I / module A.



PL1 - PVC-U

Between flanges PN10 - PVC-U body - Reinforced PP butterfly - EPDM or FKM seat - Stainless steel stem - Anti-UV protection - ABS lever up to DN200, cast iron gearbox above - PS: 10 bar - TS: 0°C/+55°C.



d (mm)	50	63	75	90	110	140	160	225	280	315
DN	40	50	65	80	100	125	150	200	250	300
face to face (mm)	34	43	46	49	58	64	70	88	98	108
EPDM seat code	5300SW040	5300SW050	5300SW065	5300SW080	5300SW100	5300SW125	5300SW150	5300SW200	5300SW250	5300SW300
FKM seat code	5301SW040	5301SW050	5301SW065	5301SW080	5301SW100	5301SW125	5301SW150	5301SW200	-	-

PVC PN10 flanges set



DN	40	50	65	80	100	125	150	200
code	982030	982031	982032	982033	982034	982035	982036	982037

PL1 - PP

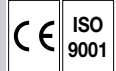
Between flanges PN10 - PP body - Reinforced PP butterfly - EPDM or FKM seat - Stainless steel stem - ABS lever up to DN200, cast iron gearbox above - PS: 10 bar - TS: +10°C/+80°C.



d (mm)	50	63	75	90	110	140	160	225
DN	40	50	65	80	100	125	150	200
face to face (mm)	34	43	46	49	58	64	70	88
EPDM seat code	5310SW040	5310SW050	5310SW065	5310SW080	5310SW100	5310SW125	5310SW150	5310SW200
FKM seat code	5311SW040	5311SW050	5311SW065	5311SW080	5311SW100	5311SW125	5311SW150	5311SW200



Excluded from 2014/68/EU Directive (article 4, §3).

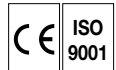


VG1 - PVC-U

PVC-U body - PVC-U gate for DN80, stainless steel 304 gate above - EPDM seat - Lever operated - Solvent cement socket connections - PS: 6 bar - TS: 0°C/+55°C.

d (mm)	90	110	160
DN	80	100	150
code	5300PF080	5300PF100	5300PF150

Membrane valves



MV310 - PVC-U

PVC-U body - EPDM membrane & gaskets or PTFE membrane & FKM gaskets - Supplied with solvent cement socket connections up to DN50, with male connections above - PS: 10 bar - TS: 0°C/+60°C.



d (mm)	20	25	32	40	50	63	75	90	110
DN	15	20	25	32	40	50	65	80	100
EPDM membrane code	5400CC015	5400CC020	5400CC025	5400CC032	5400CC040	5400CC050	5400CM065	5400CM080	5400CM100
PTFE membrane code	5402CC015	5402CC020	5402CC025	5402CC032	5402CC040	5402CC050	5402CM065	5402CM080	5402CM100

MV310 - PP

PP body - EPDM membrane & gaskets or PTFE membrane & FKM gaskets - Supplied with solvent cement socket connections up to DN50, with male connections above - PS: 10 bar - TS: +10°C/+80°C.



d (mm)	20	25	32	40	50	63	75	90	110
DN	15	20	25	32	40	50	65	80	100
EPDM membrane code	5410CC015	5410CC020	5410CC025	5410CC032	5410CC040	5410CC050	5410CM065	5410CM080	5410CM100
PTFE membrane code	5412CC015	5412CC020	5412CC025	5412CC032	5412CC040	5412CC050	5412CM065	5412CM080	5412CM100

Pneumatic actuated valves

Actuators

Valve mounting acc. to ISO 5211 - Limit switch box bracket connection acc. to NAMUR 1 - Solenoid pilot valve connection acc. to NAMUR VDI/VE 3845 - Rack and pinion actuator - 90° operating angle - Reinforced fiberglass polyamide body - Position indicator - TS: -32°C/+90°C - Max. air supply: 8 bar - Air supply connection 1/4" - CE II 2 GD c T6.



Double acting

type	avail. torque (Nm) at air supply 6 bar	ISO		code
PPW	17	F4	11	012100
PP00	25	F5	14	012103
PP10	71	F7	17	012106
PP20	165	F7	22	012109

Spring return

type	avail. torque (Nm) at air supply 6 bar	ISO		code	
PPWS	10,6	6,5	F4	11	012120
PP00S	13,7	11,3	F5	14	012123
PP10S	40,2	30,8	F7	17	012126
PP20S	101,3	64,2	F7	22	012129

Limit switch box

SP - Universal limit switch box IP65

Black noryl compact box - Anti-UV polycarbonate cover with direct visualisation - Includes universal adjustable bracket for NAMUR 1, 2 & 3 actuators - Includes gland pack M20 x 1,5 - TS: -15°C/+80°C.

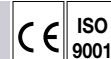


type	switches	code
SP 012	2 SPDT silver plated mechanical switches 250V - 5A	0460012N
SP 732	2 inductive detectors 3 threads PNP 10 - 30V DC P + F NBB2 V3 E2	0460014N



Pneumatic actuated ball valves

All our pneumatic actuated plastic ball valves are designed for a compressed air supply of 6 bar - Please consult for any other air supply pressure - **⚠ Max. ΔP: 10 bar.**



C200 - PVC-U - Ball valve with plastic pneumatic actuator

PVC-U body & ball - PTFE seats - PS: 16 bar - TS: 0°C/+60°C - Supplied with solvent cement socket ends.

CL1 - PVC-U - Ball valve with plastic pneumatic actuator

PVC-U body & ball - PTFE seats - PS: 10 bar - TS: 0°C/+55°C - Supplied with solvent cement socket ends.



d (mm)	DN	double acting	
		actuator	code
C200 / EPDM gaskets			
20	15	PPW	5100AC015012100
25	20	PPW	5100AC020012100
32	25	PPW	5100AC025012100
40	32	PPW	5100AC032012100
50	40	PP00	5100AC040012103
63	50	PP00	5100AC050012103
CL1 / EPDM gaskets			
75	65	PP10	5100SC065012106
90	80	PP10	5100SC080012106
110	100	PP20	5100SC100012109

d (mm)	DN	spring return	
		actuator	code
C200 / EPDM gaskets			
20	15	PPWS	5100AC015012120
25	20	PPWS	5100AC020012120
32	25	PP00S	5100AC025012123
40	32	PP00S	5100AC032012123
50	40	PP10S	5100AC040012126
63	50	PP10S	5100AC050012126
CL1 / EPDM gaskets			
75	65	PP10S	5100SC065012126
90	80	PP10S	5100SC080012126
110	100	PP20S	5100SC100012129



d (mm)	DN	double acting	
		actuator	code
C200 / FKM gaskets			
20	15	PPW	5101AC015012100
25	20	PPW	5101AC020012100
32	25	PPW	5101AC025012100
40	32	PPW	5101AC032012100
50	40	PP00	5101AC040012103
63	50	PP00	5101AC050012103
CL1 / FKM gaskets			
75	65	PP10	5101SC065012106
90	80	PP10	5101SC080012106
110	100	PP20	5101SC100012109

d (mm)	DN	spring return	
		actuator	code
C200 / FKM gaskets			
20	15	PPWS	5101AC015012120
25	20	PPWS	5101AC020012120
32	25	PP00S	5101AC025012123
40	32	PP00S	5101AC032012123
50	40	PP10S	5101AC040012126
63	50	PP10S	5101AC050012126
CL1 / FKM gaskets			
75	65	PP10S	5101SC065012126
90	80	PP10S	5101SC080012126
110	100	PP20S	5101SC100012129

C200 - PP - Ball valve with plastic pneumatic actuator

PP-H body & ball - PTFE seats - PS: 10 bar - TS: +10°C/+80°C - Supplied with solvent cement socket ends.

CL1 - PP - Ball valve with plastic pneumatic actuator

PP-H body & ball - PTFE seats - PS: 10 bar - TS: +10°C/+80°C - Supplied with solvent cement socket ends.



d (mm)	DN	double acting	
		actuator	code
C200 / EPDM gaskets			
20	15	PPW	5110AC015012100
25	20	PPW	5110AC020012100
32	25	PPW	5110AC025012100
40	32	PPW	5110AC032012100
50	40	PP00	5110AC040012103
63	50	PP00	5110AC050012103
CL1 / EPDM gaskets			
75	65	PP10	5110SC065012106
90	80	PP10	5110SC080012106
110	100	PP20	5110SC100012109

d (mm)	DN	spring return	
		actuator	code
C200 / EPDM gaskets			
20	15	PPWS	5110AC015012120
25	20	PPWS	5110AC020012120
32	25	PP00S	5110AC025012123
40	32	PP00S	5110AC032012123
50	40	PP10S	5110AC040012126
63	50	PP10S	5110AC050012126
CL1 / EPDM gaskets			
75	65	PP10S	5110SC065012126
90	80	PP10S	5110SC080012126
110	100	PP20S	5110SC100012129

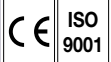


d (mm)	DN	double acting	
		actuator	code
C200 / FKM gaskets			
20	15	PPW	5111AC015012100
25	20	PPW	5111AC020012100
32	25	PPW	5111AC025012100
40	32	PPW	5111AC032012100
50	40	PP00	5111AC040012103
63	50	PP00	5111AC050012103
CL1 / FKM gaskets			
75	65	PP10	5111SC065012106
90	80	PP10	5111SC080012106
110	100	PP20	5111SC100012109

d (mm)	DN	spring return	
		actuator	code
C200 / FKM gaskets			
20	15	PPWS	5111AC015012120
25	20	PPWS	5111AC020012120
32	25	PP00S	5111AC025012123
40	32	PP00S	5111AC032012123
50	40	PP10S	5111AC040012126
63	50	PP10S	5111AC050012126
CL1 / FKM gaskets			
75	65	PP10S	5111SC065012126
90	80	PP10S	5111SC080012126
110	100	PP20S	5111SC100012129

Pneumatic actuated butterfly valves

All our pneumatic actuated plastic butterfly valves are designed for a compressed air supply of 6 bar - Please consult for any other air supply pressure - ⚠ **Max. ΔP: 10 bar.**



PL1 - PVC-U - Butterfly valve with pneumatic actuator

PVC-U body - Reinforced PP disc - Between flanges PN10 - PS: 10 bar - TS: 0°C/+55°C.



DN	face to face (mm)	EPDM seat	
		double acting	
		actuator	code
40	34	PP00	5300SW040012103
50	44	PP00	5300SW050012103
65	46	PP00	5300SW065012103
80	57	PP10	5300SW080012106
100	60	PP10	5300SW100012106
125	66	PP20	5300SW125012109
150	72	PP20	5300SW150012109
200	82	PP20	5300SW200012109
250	92	AP115	5300SW250017011
300	98	AP125	5300SW300017012

DN	face to face (mm)	EPDM seat	
		spring return	
		actuator	code
40	34	PP10S	5300SW040012126
50	44	PP10S	5300SW050012126
65	46	PP10S	5300SW065012126
80	57	PP10S	5300SW080012126
100	60	PP20S	5300SW100012129
125	66	PP20S	5300SW125012129
150	72	APS115	5300SW150017111
200	82	APS115	5300SW200017111
250	92	APS160	5300SW250017114
300	98	APS160	5300SW300017114



DN	face to face (mm)	FKM seat	
		double acting	
		actuator	code
40	34	PP00	5301SW040012103
50	44	PP00	5301SW050012103
65	46	PP00	5301SW065012103
80	57	PP10	5301SW080012106
100	60	PP10	5301SW100012106
125	66	PP20	5301SW125012109
150	72	PP20	5301SW150012109
200	82	PP20	5301SW200012109

DN	face to face (mm)	FKM seat	
		spring return	
		actuator	code
40	34	PP10S	5301SW040012126
50	44	PP10S	5301SW050012126
65	46	PP10S	5301SW065012126
80	57	PP10S	5301SW080012126
100	60	PP20S	5301SW100012129
125	66	PP20S	5301SW125012129
150	72	APS115	5301SW150017111
200	82	APS115	5301SW200017111

PL1 - PP - Butterfly valve with pneumatic actuator

PP body - Reinforced PP disc - Between flanges PN10 - PS: 10 bar - TS: +10°C/+80°C.



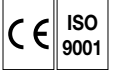
DN	face to face (mm)	EPDM seat	
		double acting	
		actuator	code
40	34	PP00	5310SW040012103
50	44	PP00	5310SW050012103
65	46	PP00	5310SW065012103
80	57	PP10	5310SW080012106
100	60	PP10	5310SW100012106
125	66	PP20	5310SW125012109
150	72	PP20	5310SW150012109
200	82	PP20	5310SW200012109

DN	face to face (mm)	EPDM seat	
		spring return	
		actuator	code
40	34	PP10S	5310SW040012126
50	44	PP10S	5310SW050012126
65	46	PP10S	5310SW065012126
80	57	PP10S	5310SW080012126
100	60	PP20S	5310SW100012129
125	66	PP20S	5310SW125012129
150	72	APS115	5310SW150017111
200	82	APS115	5310SW200017111



DN	face to face (mm)	FKM seat	
		double acting	
		actuator	code
40	34	PP00	5311SW040012103
50	44	PP00	5311SW050012103
65	46	PP00	5311SW065012103
80	57	PP10	5311SW080012106
100	60	PP10	5311SW100012106
125	66	PP20	5311SW125012109
150	72	PP20	5311SW150012109
200	82	PP20	5311SW200012109

DN	face to face (mm)	FKM seat	
		spring return	
		actuator	code
40	34	PP10S	5311SW040012126
50	44	PP10S	5311SW050012126
65	46	PP10S	5311SW065012126
80	57	PP10S	5311SW080012126
100	60	PP20S	5311SW100012129
125	66	PP20S	5311SW125012129
150	72	APS115	5311SW150017111
200	82	APS115	5311SW200017111



Pneumatic actuated membrane valves

MV309 - PVC-U

PVC-U body - EPDM membrane & gaskets or PTFE membrane & FKM gaskets - Supplied with solvent cement socket ends - PS: 6 bar - TS: 0°C/+60°C - Max. air supply 6 bar - Air supply connection 1/4" or Namur.



	normally closed			
d (mm)	20	25	32	40
DN	15	20	25	32
EPDM gaskets code	5400BC015NF	5400BC020NF	5400BC025NF	5400BC032NF
FKM gaskets code	5402BC015NF	5402BC020NF	5402BC025NF	5402BC032NF

	normally open			
d (mm)	20	25	32	40
DN	15	20	25	32
EPDM gaskets code	5400BC015NO	5400BC020NO	5400BC025NO	5400BC032NO
FKM gaskets code	5402BC015NO	5402BC020NO	5402BC025NO	5402BC032NO

MV309 - PP

PP body - EPDM membrane & gaskets or PTFE membrane & FKM gaskets - Supplied with solvent cement socket ends - PS: 6 bar - TS: +10°C/+80°C - Max. air supply 6 bar - Air supply connection 1/4" or Namur.



	normally closed			
d (mm)	20	25	32	40
DN	15	20	25	32
EPDM gaskets code	5410BC015NF	5410BC020NF	5410BC025NF	5410BC032NF
FKM gaskets code	5412BC015NF	5412BC020NF	5412BC025NF	5412BC032NF

Limit switch box

	code
2 mechanical SPDT switches	54BFCM

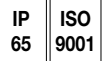


Namur solenoid pilot valves, see page 83



Solenoid valves

Normally closed (opening under tension) - Coil insulation class F - IP65 - T30 connector - Horizontal mounting - Coil on the top.



PE220 - PTFE

PTFE body - PTFE coated NBR obturator - PS: 0,1 to 1 bar - TS: -10°C/+90°C - 5 mm bore - Threaded connections.



Ø	230V 50Hz	24V DC	24V 50Hz
	code	code	code
3/8"	6432ST01	6432ST51	6432ST11
1/2"	6432ST02	6432ST52	6432ST12
spare coil	980550	980552	980551



EV150 - PVC-U

PVC-U body - PTFE bellow - EPDM tightness - TS: 0°C/+60°C - Solvent cement connections.



d (mm)	DN	PS (bar)	Kv (l/mn)	230V 50Hz	24V DC	24V 50Hz
				code	code	code
15	10	0 - 2	20,7	6400BF01	6400BF51	6400BF11
20	15	0 - 1	29,7	6400BF02	6400BF52	6400BF12
25	20	0 - 0,5	53,0	6400BF03	6400BF53	6400BF13
spare coil				980270	980272	980271



EV160 - PVC-U

PVC-U body - EPDM membrane - PS: 0,3 to 6 bar - TS: 0°C/+60°C - Solvent cement connections.

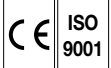


d (mm)	DN	Kv (l/mn)	230V 50Hz	24V DC	24V 50Hz	48V 50Hz
			code	code	code	
20	15	3,1	6400CF02	6400CF52	6400CF12	6400CF32
25	20	9,8	6400CF03	6400CF53	6400CF13	6400CF33
32	25	10,3	6400CF04	6400CF54	6400CF14	6400CF34
40	32	23,2	6400CF05	6400CF55	6400CF15	6400CF35
50	40	24,0	6400CF06	6400CF56	6400CF16	6400CF36
63	50	29,6	6400CF07	6400CF57	6400CF17	6400CF37
spare coil			980280	980282	980281	980283



Electric actuated ball valves

All our electric actuated plastic ball valves are equipped with a 230V AC actuator as standard - Please consult for any other power supply - ⚠ **Max. ΔP: 10 bar.**



C200 - PVC-U - Ball valve with electric actuator from DN15 to DN50

PVC-U body & ball - PTFE seats - PS: 16 bar - TS: 0°C/+60°C - Supplied with solvent cement socket ends.

CL1 - PVC-U - Ball valve with electric actuator from DN65 to DN100

PVC-U body & ball - PTFE seats - PS: 10 bar - TS: 0°C/+55°C - Supplied with solvent cement socket ends.

d (mm)	DN	actuator	code
C200 / EPDM gaskets			
20	15	UMA3.5	5100AC015022060
25	20	UMA3.5	5100AC020022060
32	25	UMA3.5	5100AC025022060
40	32	UMA3.5	5100AC032022060
50	40	UMA3.5	5100AC040022060
63	50	UMA3.5	5100AC050022060
CL1 / EPDM gaskets			
75	65	UMA3.5	5100SC065022060
90	80	UMA3.5	5100SC080022060
110	100	UMB7	5100SC100022170

d (mm)	DN	actuator	code
C200 / EPDM gaskets			
20	15	SA03	5100AC015023000
25	20	SA03	5100AC020023000
32	25	SA03	5100AC025023000
40	32	SA03	5100AC032023000
50	40	SA03	5100AC040023000
63	50	SA03	5100AC050023000
CL1 / EPDM gaskets			
75	65	SA03	5100SC065023000
90	80	SA05	5100SC080023010
110	100	SA05	5100SC100023010

d (mm)	DN	actuator	code
C200 / FKM gaskets			
20	15	UMA3.5	5101AC015022060
25	20	UMA3.5	5101AC020022060
32	25	UMA3.5	5101AC025022060
40	32	UMA3.5	5101AC032022060
50	40	UMA3.5	5101AC040022060
63	50	UMA3.5	5101AC050022060
CL1 / FKM gaskets			
75	65	UMA3.5	5101SC065022060
90	80	UMA3.5	5101SC080022060
110	100	UMB7	5101SC100022170

d (mm)	DN	actuator	code
C200 / FKM gaskets			
20	15	SA03	5101AC015023000
25	20	SA03	5101AC020023000
32	25	SA03	5101AC025023000
40	32	SA03	5101AC032023000
50	40	SA03	5101AC040023000
63	50	SA03	5101AC050023000
CL1 / FKM gaskets			
75	65	SA03	5101SC065023000
90	80	SA05	5101SC080023010
110	100	SA05	5101SC100023010

C200 - PP - Ball valve with electric actuator from DN15 to DN50

PP-H body & ball - PTFE seats - PS: 10 bar - TS: +10°C/+80°C - Supplied with solvent cement socket ends.

CL1 - PP - Ball valve with electric actuator from DN65 to DN100

PP-H body & ball - PTFE seats - PS: 10 bar - TS: +10°C/+80°C - Supplied with solvent cement socket ends.

d (mm)	DN	actuator	code
C200 / EPDM gaskets			
20	15	UMA3.5	5110AC015022060
25	20	UMA3.5	5110AC020022060
32	25	UMA3.5	5110AC025022060
40	32	UMA3.5	5110AC032022060
50	40	UMA3.5	5110AC040022060
63	50	UMA3.5	5110AC050022060
CL1 / EPDM gaskets			
75	65	UMA3.5	5110SC065022060
90	80	UMA3.5	5110SC080022060
110	100	UMB7	5110SC100022170

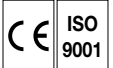
d (mm)	DN	actuator	code
C200 / EPDM gaskets			
20	15	SA03	5110AC015023000
25	20	SA03	5110AC020023000
32	25	SA03	5110AC025023000
40	32	SA03	5110AC032023000
50	40	SA03	5110AC040023000
63	50	SA03	5110AC050023000
CL1 / EPDM gaskets			
75	65	SA03	5110SC065023000
90	80	SA05	5110SC080023010
110	100	SA05	5110SC100023010

d (mm)	DN	actuator	code
C200 / FKM gaskets			
20	15	UMA3.5	5111AC015022060
25	20	UMA3.5	5111AC020022060
32	25	UMA3.5	5111AC025022060
40	32	UMA3.5	5111AC032022060
50	40	UMA3.5	5111AC040022060
63	50	UMA3.5	5111AC050022060
CL1 / FKM gaskets			
75	65	UMA3.5	5111SC065022060
90	80	UMA3.5	5111SC080022060
110	100	UMB7	5111SC100022170

d (mm)	DN	actuator	code
C200 / FKM gaskets			
20	15	SA03	5111AC015023000
25	20	SA03	5111AC020023000
32	25	SA03	5111AC025023000
40	32	SA03	5111AC032023000
50	40	SA03	5111AC040023000
63	50	SA03	5111AC050023000
CL1 / FKM gaskets			
75	65	SA03	5111SC065023000
90	80	SA05	5111SC080023010
110	100	SA05	5111SC100023010

Electric actuated butterfly valves

All our electric actuated plastic butterfly valves are equipped with a 230V AC actuator as standard - Please consult for any other power supply - ⚠ **Max. ΔP: 10 bar.**



PL1 - PVC-U - Butterfly valve with electric actuator

PVC-U body - Reinforced PP disc - Between flanges PN10 - PS: 10 bar - TS: 0°C/+55°C.



DN	face to face (mm)	EPDM seat	
		actuator	code
40	34	UMA3.5	5300SW040022060
50	44	UMA3.5	5300SW050022060
65	46	UMA3.5	5300SW065022060
80	57	UMB7	5300SW080022170
100	60	UMC10	5300SW100022240
125	66	UMC10	5300SW125022240
150	72	UMC10	5300SW150022240
200	82	UVC15	5300SW200022330
250	92	UVD25	5300SW250022350
300	98	UVF50	5300SW300022400



DN	face to face (mm)	EPDM seat	
		actuator	code
40	34	SA05	5300SW040023010
50	44	SA05	5300SW050023010
65	46	SA05	5300SW065023010
80	57	SA05	5300SW080023010
100	60	SA05	5300SW100023010
125	66	NA06	5300SW125023110
150	72	NA09	5300SW150023120
200	82	NA15	5300SW200023130
250	92	NA28	5300SW250023150
300	98	NA38	5300SW300023160



DN	face to face (mm)	FKM seat	
		actuator	code
40	34	UMA3.5	5301SW040022060
50	44	UMA3.5	5301SW050022060
65	46	UMA3.5	5301SW065022060
80	57	UMB7	5301SW080022170
100	60	UMC10	5301SW100022240
125	66	UMC10	5301SW125022240
150	72	UMC10	5301SW150022240
200	82	UVC15	5301SW200022330



DN	face to face (mm)	FKM seat	
		actuator	code
40	34	SA05	5301SW040023010
50	44	SA05	5301SW050023010
65	46	SA05	5301SW065023010
80	57	SA05	5301SW080023010
100	60	SA05	5301SW100023010
125	66	NA06	5301SW125023110
150	72	NA09	5301SW150023120
200	82	NA15	5301SW200023130

PL1 - PP - Butterfly valve with electric actuator

PP-H body - Reinforced PP disc - Between flanges PN10 - PS: 10 bar - TS: +10°C/+80°C.



DN	face to face (mm)	EPDM seat	
		actuator	code
40	34	UMA3.5	5310SW040022060
50	44	UMA3.5	5310SW050022060
65	46	UMA3.5	5310SW065022060
80	57	UMB7	5310SW080022170
100	60	UMC10	5310SW100022240
125	66	UMC10	5310SW125022240
150	72	UMC10	5310SW150022240
200	82	UVC15	5310SW200022330



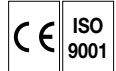
DN	face to face (mm)	EPDM seat	
		actuator	code
40	34	SA05	5310SW040023010
50	44	SA05	5310SW050023010
65	46	SA05	5310SW065023010
80	57	SA05	5310SW080023010
100	60	SA05	5310SW100023010
125	66	NA06	5310SW125023110
150	72	NA09	5310SW150023120
200	82	NA15	5310SW200023130



DN	face to face (mm)	FKM seat	
		actuator	code
40	34	UMA3.5	5311SW040022060
50	44	UMA3.5	5311SW050022060
65	46	UMA3.5	5311SW065022060
80	57	UMB7	5311SW080022170
100	60	UMC10	5311SW100022240
125	66	UMC10	5311SW125022240
150	72	UMC10	5311SW150022240
200	82	UVC15	5311SW200022330



DN	face to face (mm)	FKM seat	
		actuator	code
40	34	SA05	5311SW040023010
50	44	SA05	5311SW050023010
65	46	SA05	5311SW065023010
80	57	SA05	5311SW080023010
100	60	SA05	5311SW100023010
125	66	NA06	5311SW125023110
150	72	NA09	5311SW150023120
200	82	NA15	5311SW200023130



Check valves - Double union construction

SL1 - PVC-U

PVC-U body & clack - EPDM or FKM seat & gaskets - Double union construction - Anti-UV protection - Without spring - Horizontal or vertical mounting - Supplied with solvent cement socket ends as standard (option for threaded unions) - PS: 10 bar - TS: 0°C/+55°C



d (mm)	20	25	32	40	50	63
DN	15	20	25	32	40	50
EPDM seat & gaskets code	5500SC015	5500SC020	5500SC025	5500SC032	5500SC040	5500SC050
FKM seat & gaskets code	5501SC015	5501SC020	5501SC025	5501SC032	5501SC040	5501SC050
spare threaded union	ECL1CT02	ECL1CT03	ECL1CT04	ECL1CT05	ECL1CT06	ECL1CT07
spare stainless steel spring	RIS15	RIS20	RIS25	RIS32	RIS40	RIS50

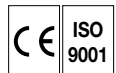
SL1 - PP

PP body & clack - EPDM or FKM seat & gaskets - Double union construction - Without spring - Horizontal or vertical mounting - Supplied with solvent cement socket ends as standard (option for threaded unions) - PS: 10 bar - TS: +10°C/+80°C.



d (mm)	20	25	32	40	50	63
DN	15	20	25	32	40	50
EPDM seat & gaskets code	5510SC015	5510SC020	5510SC025	5510SC032	5510SC040	5510SC050
FKM seat & gaskets code	5511SC015	5511SC020	5511SC025	5511SC032	5511SC040	5511SC050
spare threaded union	ECL1PT02	ECL1PT03	ECL1PT04	ECL1PT05	ECL1PT06	ECL1PT07
spare stainless steel spring	RIS15	RIS20	RIS25	RIS32	RIS40	RIS50

Foot valves



FV1 - PVC-U

PVC-U body, clack & screen - EPDM gaskets as standard (option for spare FKM gaskets) - Vertical mounting - Solvent cement socket connection - PS: 10 bar - TS: 0°C/+60°C.



d (mm)	20	25	32	40	50	63
DN	15	20	25	32	40	50
code	5500FC015	5500FC020	5500FC025	5500FC032	5500FC040	5500FC050
spare FKM gaskets	JTCF020	JTCF025	JTCF032	JTCF040	JTCF050	JTCF063

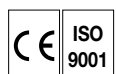
FFV - PVC-U

PVC-U body - EPDM gaskets - Vertical mounting - Between flanges PN10 - PS: 10 bar - TS: 0°C/+55°C.



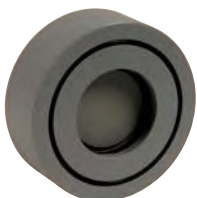
DN	65	80	100	150
code	5500FB065	5500FB080	5500FB100	5500FB150

Disc check valve



DISCO - PVC-U

PVC-U body & clack - EPDM or FKM gaskets - Stainless steel spring - Horizontal or vertical mounting - Between flanges PN10 - PS: 6 bar - TS: 0°C/+60°C.



DN	15	20	25	32	40	50	65	80	100
EPDM gaskets code	5500DW015	5500DW020	5500DW025	5500DW032	5500DW040	5500DW050	5500DW065	5500DW080	5500DW100
FKM gaskets code	5501DW015	5501DW020	5501DW025	5501DW032	5501DW040	5501DW050	5501DW065	5501DW080	5501DW100



Swing check valves

CS1 - PVC-U

PVC-U body & clack - EPDM or FKM gaskets - Stainless steel spring - Horizontal or vertical mounting - Between flanges PN10 - PS: 10 bar - TS: 0°C/+60°C.

DN	32	40	50	65	80	100	125	150
EPDM gaskets code	5500CW032	5500CW040	5500CW050	5500CW065	5500CW080	5500CW100	5500CW125	5500CW150
*EPDM gaskets code	5500CB032	5500CB040	5500CB050	5500CB065	5500CB080	5500CB100	5500CB125	5500CB150
FKM gaskets code	5501CW032	5501CW040	5501CW050	5501CW065	5501CW080	5501CW100	5501CW125	5501CW150
*FKM gaskets code	5501CB032	5501CB040	5501CB050	5501CB065	5501CB080	5501CB100	5501CB125	5501CB150

* Supplied with PN10 flanges set for solvent cement connections.

RSK1 - PP

PP body & clack - EPDM or FKM gaskets - Stainless steel spring - Horizontal or vertical mounting - Between flanges PN10 - PS: 6 bar - TS: +10°C/+90°C.

DN	32	40	50	65	80	100	125	150
EPDM gaskets code	5510AW032	5510AW040	5510AW050	5510AW065	5510AW080	5510AW100	5510AW125	5510AW150
FKM gaskets code	5511AW032	5511AW040	5511AW050	5511AW065	5511AW080	5511AW100	5511AW125	5511AW150
spare spring code	RIK032	RIK040	RIK050	RIK065	RIK080	RIK100	RIK100	RIK150

Air vents



BE1 - PVC-U

PVC-U body - PP clack - EPDM or FKM gaskets - Vertical mounting - Solvent cement socket connection - PS: 10 bar - TS: 0°C/+60°C.

d (mm)	20	25	32	40	50	63	75	90
DN	15	20	25	32	40	50	65	80
EPDM gaskets code	5500LC015	5500LC020	5500LC025	5500LC032	5500LC040	5500LC050	5500LC065	5500LC080
FKM gaskets code	5501LC015	5501LC020	5501LC025	5501LC032	5501LC040	5501LC050	5501LC065	5501LC080



BE1 - PP

PP body & clack - EPDM or FKM gaskets - Vertical mounting - Solvent cement socket connection - PS: 10 bar - TS: +10°C/+80°C.

d (mm)	20	25	32	40	50	63	75	90
DN	15	20	25	32	40	50	65	80
EPDM gaskets code	5510LC015	5510LC020	5510LC025	5510LC032	5510LC040	5510LC050	5510LC065	5510LC080
FKM gaskets code	5511LC015	5511LC020	5511LC025	5511LC032	5511LC040	5511LC050	5511LC065	5511LC080

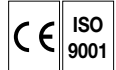
Y-strainer



FYC - PVC-U

PVC-U body & unions - Double union construction - EPDM gaskets - PP screen - Mesh 0,8 mm - Supplied with solvent cement socket ends - PS: 6 bar - TS: 0°C/+60°C.

d (mm)	20	25	32	40	50	63	75	90	110
DN	15	20	25	32	40	50	65	80	100
code	5600HC015	5600HC020	5600HC025	5600HC032	5600HC040	5600HC050	5600HC065	5600HC080	5600HC100



DMV755 - PVC-U

PVC-U body - EPDM gaskets - PTFE coated EPDM membrane - Supplied with solvent cement socket ends - PS: 10 bar - TS: 0°C/+50°C - Downstream setting range: 1 to 9 bar - Downstream pressure connection 1/4" - Pressure gauge not included.

d (mm)	16	20	25	32	40	50	63
DN	10	15	20	25	32	40	50
code	5800AC010	5800AC015	5800AC020	5800AC025	5800AC032	5800AC040	5800AC050

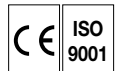


DMV755 - PP

PP body - EPDM or FKM gaskets - PTFE coated EPDM membrane - Supplied with solvent cement socket ends - PS: 10 bar - TS: +10°C/+70°C - Downstream setting range: 1 to 9 bar - Downstream pressure connection 1/4" - Pressure gauge not included.

d (mm)	16	20	25	32	40	50	63
DN	10	15	20	25	32	40	50
EPDM gaskets code	5810AC010	5810AC015	5810AC020	5810AC025	5810AC032	5810AC040	5810AC050
FKM gaskets code	5811AC010	5811AC015	5811AC020	5811AC025	5811AC032	5811AC040	5811AC050

Overflow valves



DHV718 - PVC-U

PVC-U body - EPDM gaskets - PTFE coated EPDM membrane - Supplied with solvent cement socket ends - PS: 10 bar - TS: 0°C/+50°C - Upstream setting range: 0,5 to 10 bar.

d (mm)	16	20	25	32	40	50	63
DN	10	15	20	25	32	40	50
code	5900CC010	5900CC015	5900CC020	5900CC025	5900CC032	5900CC040	5900CC050



DHV718 - PP

PP body - EPDM gaskets - PTFE coated EPDM membrane - Supplied with solvent cement socket ends - PS: 10 bar - TS: 0°C/+70°C - Upstream setting range: 0,5 to 10 bar.

d (mm)	16	20	25	32	40	50	63
DN	10	15	20	25	32	40	50
code	5910CC010	5910CC015	5910CC020	5910CC025	5910CC032	5910CC040	5910CC050



DHV712-R - PVC-U - DN10 to 50

PVC-U body - EPDM gaskets - PTFE coated EPDM membrane - Patented piston - Supplied with solvent cement socket ends - PS: 10 bar - TS: 0°C/+50°C - Upstream setting range: 0,3 to 10 bar - Upstream pressure connection 1/4" - Pressure gauge as an option.

d (mm)	16	20	25	32	40	50	63
DN	10	15	20	25	32	40	50
code	5900BC010	5900BC015	5900BC020	5900BC025	5900BC032	5900BC040	5900BC050



DHV712 - PVC-U - DN65 to 100

PVC-U body - EPDM gaskets - PTFE coated EPDM membrane - Patented piston - Male connections or flange PN10 - PS: 10 bar, except 6 bar for DN100 - TS: 0°C/+50°C - Upstream setting range: 0,3 to 4 bar.

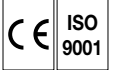
d (mm)	75	90	110
DN	65	80	100
male code	5900BM065	5900BM080	5900BM100
flange PN10 code	5900BB065	5900BB080	5900BB100



DHV712 - PP

PP body - EPDM gaskets - PTFE coated EPDM membrane - Patented piston - Supplied with solvent cement socket ends - PS: 10 bar - TS: +10°C/+70°C - Upstream setting range: 0,3 to 10 bar.

d (mm)	16	20	25	32	40	50	63
DN	10	15	20	25	32	40	50
EPDM gaskets code	5910BC010	5910BC015	5910BC020	5910BC025	5910BC032	5910BC040	5910BC050
FKM gaskets code	5911BC010	5911BC015	5911BC020	5911BC025	5911BC032	5911BC040	5911BC050



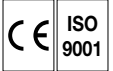
Float valve

RF1 - PVC-U

PVC-U body - EPDM or FKM gaskets - Stainless steel lever - PE ball - PS: 10 bar up to DN32, 5 bar above - TS: 0°C/+60°C.



Ø	1/2"	3/4"	1"	1"1/4	1"1/2	2"	2"1/2	3"
EPDM gaskets code	6200RT015	6200RT020	6200RT025	6200RT032	6200RT040	6200RT050	6200RT065	6200RT080
FKM gaskets code	6201RT015	6201RT020	6201RT025	6201RT032	6201RT040	6201RT050	6201RT065	6201RT080



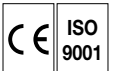
Water jet pump

SP820 - PVC-U

PVC-U body - EPDM gaskets - PS: 10 bar - TS: 0°C/+60°C - Supplied with solvent cement socket ends - 1 mm nozzle bore.



d (mm)	16	20	25	32	40	50
DN	10	15	20	25	32	40
suction d1 (mm)	16	16	16	32	40	50
suction DN	10	10	10	25	32	40
code	6000AC010	6000AC015	6000AC020	6000AC025	6000AC032	6000AC040



Dosing valve

C200P - PVC-U

PVC-U body, ball & stem - PTFE seats - EPDM gaskets - ABS lever - Supplied with solvent cement socket ends - PS: 16 bar - TS: 0°C/+60°C - 0-90° graduation (scale 5°).



d (mm)	20	25	32	40	50	63
DN	15	20	25	32	40	50
Kv (l/mn)	90	160	250	400	620	850
code	6000BC015	6000BC020	6000BC025	6000BC032	6000BC040	6000BC050

Pressure gauge separators

MDM902 - PVC-U

PVC-U body - EPDM gaskets - PTFE coated EPDM membrane - PP-FV upper part - PS: 10 bar - TS: 0°C/+60°C.



d (mm)	25	25	32	32
Ø	1/4"	1/4"	1/2"	1/2"
Ø mano.	1/4"	1/2"	1/4"	1/2"
code	6303AM02044	6303AM02042	6303AM02524	6303AM02522

MDM902 - PP

PP body - EPDM gaskets - PTFE coated EPDM membrane - PP-FV upper part - PS: 10 bar - TS: +10°C/+80°C.



d (mm)	25	25	32	32
Ø	1/4"	1/4"	1/2"	1/2"
Ø mano.	1/4"	1/2"	1/4"	1/2"
code	6313AM02044	6313AM02042	6313AM02524	6313AM02522

MDM118 - PTFE

PTFE body & gaskets - PTFE coated stainless steel 316 membrane - Stainless steel 316 upper part - PS: -1 to 10 bar - TS: 0°C/+120°C - Supplied without pressure gauge.



d (mm)	15	15
Ø mano.	1/4"	1/2"
code	6333NB0154	6333NB0152

Pressure gauges, see page 178





Sight glass

VISOR - PVC-U

PVC-U body & union - Transparent PVC-U pipe - EPDM gasket - Supplied with solvent cement socket ends - Horizontal or vertical mounting - PS: 10 bar up to DN80, 4 bar above - TS: 0°C/+60°C.

d (mm)	20	25	32	40	50	63
DN	15	20	25	32	40	50
code	6200CC015	6200CC020	6200CC025	6200CC032	6200CC040	6200CC050

Level gauge



MG33-P - PVC-U

PVC-U body & float - Flanged PN6 - Aluminium rolls reading ruler - Plexiglas glass - Drain cap - Min. fluid density: 0,8 - PS: 6 bar - TS: 0°C/+60°C - Vertical mounting.

DN	20	20	20	20	20
L (mm)	800	900	1000	1200	1400
code	6200Y0800	6200Y0900	6200Y1000	6200Y1200	6200Y1400

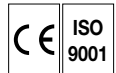
Bistable contact

code	62BSS
------	-------

Flowmeter

DFM - PVC with float

PVC-U body & tube - PDVF float - EPDM gaskets - **⚠ I/h scale for water at 20°C** (other fluids please consult) - Vertical position, upstream flow - Supplied with solvent cement socket ends - **⚠ Not for compressed air** - PS: 10 bar - TS: 0°C/+50°C.



d (mm)	DN	range (l/h)	standard float	magnetic float
			code	code
16	10	3-24	6100AC010H01	6100AC010H01M
		5-60	6100AC010H03	6100AC010H03M
		10-100	6100AC010H04	6100AC010H04M
		25-250	6100AC010H06	6100AC010H06M
20	15	5-50	6100BC015H02	-
		15-150	6100BC015H05	-
		25-250	6100BC015H06	-
		40-400	6100BC015H07	6100BC015H07M
25	20	15-150	6100CC020H05	-
		40-400	6100CC020H07	6100CC020H07M
		60-600	6100CC020H08	-
		100-1000	6100CC020H09	-
32	25	25-250	6100DC025H06	-
		40-400	6100DC025H07	6100DC025H07M
		100-1000	6100DC025H09	-
		150-1500	6100DC025H10	-
32	25	60-600	6100EC025H08	6100EC025H08M
		100-1000	6100EC025H09	6100EC025H09M
40	32	150-1500	6100EC032H10	6100EC032H10M
50	40	200-2000	6100EC040H11	6100EC040H11M
40	32	250-2500	6100EC032H12	6100EC032H12M
50	40	300-3000	6100EC040H13	6100EC040H13M
63	50	400-4000	6100EC050H14	-
		600-6000	6100EC050H15	6100EC050H15M
		1000-10000	6100EC050H16	6100EC050H16M
75	65	1500-15000	6100EC065H17	6100EC065H17M
		2500-25000	6100EC065H18	6100EC065H18M
		10000-50000	6100EC065H19	-

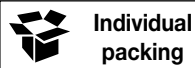
ZE951 - Magnetic bistable contact

Cutting power
10VA / 230V AC / 0,5A -
IP65 connector.



code	
NO without flow	61951NO
NC without flow	61951NF

PP cam-lock couplings



MIL-C-27487 & A-A-59326 - Fiberglass reinforced PP body - White EPDM gasket - F304 cams - PS: 6 bar - TS: 0°C/+80°C.

ISO 9001



Female adaptor A

DN	15	20	25	32	40	50	80	100
Ø	1/2"	3/4"	1"	1 1/4"	1 1/2"	2"	3"	4"
code	2211004	2211005	2211006	2211007	2211008	2211009	2211011	2211012



Male coupling B

DN	15	20	25	32	40	50	80	100
Ø	1/2"	3/4"	1"	1 1/4"	1 1/2"	2"	3"	4"
code	2212004	2212005	2212006	2212007	2212008	2212009	2212011	2212012



Hose coupling C

DN	15	20	25	32	40	50	80	100
Ø (mm)	20	25	32	40	50	63	90	110
code	2213004	2213005	2213006	2213007	2213008	2213009	2213011	2213012



Female coupling D

DN	15	20	25	32	40	50	80	100
Ø	1/2"	3/4"	1"	1 1/4"	1 1/2"	2"	3"	4"
code	2214004	2214005	2214006	2214007	2214008	2214009	2214011	2214012



Hose adaptor E

DN	15	20	25	32	40	50	80	100
Ø (mm)	20	25	32	40	50	63	90	110
code	2215004	2215005	2215006	2215007	2215008	2215009	2215011	2215012



Male adaptor F

DN	15	20	25	32	40	50	80	100
Ø	1/2"	3/4"	1"	1 1/4"	1 1/2"	2"	3"	4"
code	2216004	2216005	2216006	2216007	2216008	2216009	2216011	2216012



Cap coupling DC

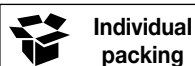
DN	15	20	25	32	40	50	80	100
code	2217004	2217005	2217006	2217007	2217008	2217009	2217011	2217012



Cap adaptor DP

DN	15	20	25	32	40	50	80	100
code	2218004	2218005	2218006	2218007	2218008	2218009	2218011	2218012

PP Guillemin symmetrical couplings



NF-E 29572 - Fiberglass reinforced PP body - White NBR gasket - PS: 6 bar - TS: 0°C/+80°C.

ISO 9001



Female coupling with lock

DN	40	50	80
Ø	1 1/2"	2"	3"
code	2434040	2434050	2434080



Male coupling with lock

DN	40	50	80
Ø	1 1/2"	2"	3"
code	2433040	2433050	2433080



Double reduced

DN	80
DN reduced	50
code	2432081



Hose coupling with lock

DN	40	50	80
Ø	40	50	80
code	2430040	2430050	2430080



Cap with lock

DN	40	50	80
code	2437040	2437050	2437080



Spanners, see page 235



PVC-U body - PS: 16 bar up to DN150, 10 bar above - TS: 0°C/+60°C -
Mandatory packing: 10 pcs up to d 90 or d1 90; individual packing above.



ISO 9001

PVC-U fittings



Elbow 90°

Female connections to be glued.

d (mm)	16	20	25	32	40	50	63	75	90	110	125	140	160	200
DN	10	15	20	25	32	40	50	65	80	100	125	125	150	200
code	C90CC016	C90CC020	C90CC025	C90CC032	C90CC040	C90CC050	C90CC063	C90CC075	C90CC090	C90CC110	C90CC125	C90CC140	C90CC160	C90CC200



Elbow 45°

Female connections to be glued.

d (mm)	16	20	25	32	40	50	63	75	90	110	125	140	160	200
DN	10	15	20	25	32	40	50	65	80	100	125	125	150	200
code	C45CC016	C45CC020	C45CC025	C45CC032	C45CC040	C45CC050	C45CC063	C45CC075	C45CC090	C45CC110	C45CC125	C45CC140	C45CC160	C45CC200



Equal tee 90°

Female connections to be glued.

d (mm)	16	20	25	32	40	50	63	75	90	110	125	140	160	200
DN	10	15	20	25	32	40	50	65	80	100	125	125	150	200
code	TECC016	TECC020	TECC025	TECC032	TECC040	TECC050	TECC063	TECC075	TECC090	TECC110	TECC125	TECC140	TECC160	TECC200



Reduced tee 90°

Female connections.

d (mm)	20x16	25x16	25x20	32x20	32x25	40x20	40x25	40x32	50x20	50x25	50x32	50x40	63x25
DN	15x10	25x15	20x15	25x15	25x20	32x15	32x20	32x25	40x15	40x20	40x25	40x32	50x20
code	TERCC2016	TERCC2516	TERCC2520	TERCC3220	TERCC3225	TERCC4020	TERCC4025	TERCC4032	TERCC5020	TERCC5025	TERCC5032	TERCC5040	TERCC6325

d (mm)	63x32	63x40	63x50	75x50	90x63	90x75	110x90
DN	50x25	50x32	50x40	65x40	80x50	80x65	100x80
code	TERCC6332	TERCC6340	TERCC6350	TERCC7550	TERCC9063	TERCC9075	TERCC11090



Tee 45°

Female connections.

d (mm)	20	25	32	40	50	63
DN	15	20	25	32	40	50
code	TE45CC20	TE45CC25	TE45CC32	TE45CC40	TE45CC50	TE45CC63

Male nipple

Male threaded.



Ø	1/2"	3/4"	1"	1 1/4"	1 1/2"	2"
code	MECT02	MECT03	MECT04	MECT05	MECT06	MECT07

3 piece union

EPDM tightness - DIN 8063 - Female connections to be glued.



d (mm)	16	20	25	32	40	50	63	75	90
DN	10	15	20	25	32	40	50	65	80
code	U3PCC016	U3PCC020	U3PCC025	U3PCC032	U3PCC040	U3PCC050	U3PCC063	U3PCC075	U3PCC090

Threaded collar for 3 piece union (BSP)

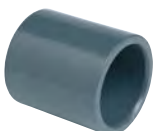
EPDM tightness - DIN 8063 - Female threaded.



d (mm)	16	20	25	32	40	50	63	75
Ø	3/8"	1/2"	3/4"	1"	1 1/4"	1 1/2"	2"	2 1/2"
code	CU3PCT01	CU3PCT02	CU3PCT03	CU3PCT04	CU3PCT05	CU3PCT06	CU3PCT07	CU3PCT08

Female socket

Female connections to be glued.



d (mm)	16	20	25	32	40	50	63	75	90	110	125	140	160	200
DN	10	15	20	25	32	40	50	65	80	100	125	125	150	200
code	MCC016	MCC020	MCC025	MCC032	MCC040	MCC050	MCC063	MCC075	MCC090	MCC110	MCC125	MCC140	MCC160	MCC200

Adaptor

Male (d1) & female (d2) connections to be glued - Male threaded.



d1 (mm)	20	25	32	40	50	63
d2 (mm)	16	20	25	32	40	50
Ø	1/2"	3/4"	1"	1"1/4	1"1/2	2"
code	EACM1602	EACM2003	EACM2504	EACM3205	EACM4006	EACM5007

Threaded nipple with ring

Stainless steel reinforcement ring - Female connection to be glued (d) - Female threaded.



d (mm)	20	25	32	40	50	63
Ø	1/2"	3/4"	1"	1"1/4	1"1/2	2"
code	MRCM2002	MRCM2503	MRCM3204	MRCM4005	MRCM5006	MRCM6307

Hose connection

Male connection to be glued (d1) - Hose connection (d2).



d1 (mm)	16	20	25	32	40	50	63
d2 (mm)	16/18	20/22	25/27	30/32	40/42	50/52	60/64
DN	10	15	20	25	32	40	50
code	ECCC16	ECCC20	ECCC25	ECCC32	ECCC40	ECCC50	ECCC63

PE collar

PE body - TS: 0°C/+80°C - Male connection to be welded.



d (mm)	20	25	32	40	50	63
DN	15	20	25	32	40	50
code	CU3PEP020	CU3PEP025	CU3PEP032	CU3PEP040	CU3PEP050	CU3PEP063

Collar for striated face flange

Female connection to be glued.



d (mm)	20	25	32	40	50	63	75	90	110	125	140	160	200	225	250	315
DN	15	20	25	32	40	50	65	80	100	125	125	150	200	225	250	300
code	CJPC020	CJPC025	CJPC032	CJPC040	CJPC050	CJPC063	CJPC075	CJPC090	CJPC110	CJPC125	CJPC140	CJPC160	CJPC200	CJPC225	CJPC250	CJPC315

Flange

DIN 8063.



d (mm)	20	25	32	40	50	63	75	90	110	125	140	160	200	225	250	315
DN	15	20	25	32	40	50	65	80	100	125	125	150	200	225	250	300
code	BTC020	BTC025	BTC032	BTC040	BTC050	BTC063	BTC075	BTC090	BTC110	BTC125	BTC140	BTC160	BTC200	BTC225	BTC250	BTC315

Reduction

Male (d1) & female (d2) connections to be glued.



d1 (mm)	20	25	25	32	32	40	40	40	50	50	50	63	63	63	75	75	75
d2 (mm)	16	16	20	20	25	20	25	32	25	32	40	32	40	50	40	50	63
code	RSCC2016	RSCC2516	RSCC2520	RSCC3220	RSCC3225	RSCC4020	RSCC4025	RSCC4032	RSCC5025	RSCC5032	RSCC5040	RSCC6332	RSCC6340	RSCC6350	RSCC7540	RSCC7550	RSCC7563
d1 (mm)	90	90	90	110	110	110	125	125	125	140	140	140	160	160	160	160	
d2 (mm)	50	63	75	63	75	90	75	90	110	90	110	125	90	110	125	140	
code	RSCC3050	RSCC3063	RSCC3075	RSCC11063	RSCC11075	RSCC11090	RSCC12575	RSCC12590	RSCC125110	RSCC14090	RSCC140110	RSCC140125	RSCC16090	RSCC160110	RSCC160125	RSCC160140	

Double reduction

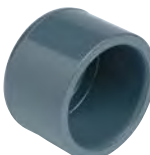
Male (d1) & female (d2 & d3) connections to be glued.



d1 (mm)	25	25	32	32	32	40	40	40	50	50	50	63	63	63	75	75	75
d2 (mm)	20	20	25	25	25	32	32	32	40	40	40	50	50	50	63	63	63
d3 (mm)	16	20	16	20	25	20	25	32	25	32	40	32	40	50	40	50	63
code	RDCC252016	RDCC252020	RDCC322516	RDCC322520	RDCC322525	RDCC403220	RDCC403225	RDCC403232	RDCC504025	RDCC504032	RDCC504040	RDCC635032	RDCC635040	RDCC635050	RDCC756340	RDCC756350	RDCC756363
d1 (mm)	90	90	90	110	110	110	110	125	125	125	125	140	140	160			
d2 (mm)	75	75	75	90	90	90	90	110	110	110	110	125	125	140			
d3 (mm)	50	63	75	50	63	75	90	63	75	90	110	90	110	110			
code	RDCC907550	RDCC907563	RDCC907575	RDCC1109050	RDCC1109063	RDCC1109075	RDCC1109090	RDCC12511063	RDCC12511075	RDCC12511090	RDCC125110110	RDCC14012590	RDCC140125110	RDCC160140110			

Cap

Female connection to be glued.



d (mm)	16	20	25	32	40	50	63	75	90	110	125	140	160	200	225
DN	10	15	20	25	32	40	50	65	80	100	125	125	150	200	200
code	BCC016	BCC020	BCC025	BCC032	BCC040	BCC050	BCC063	BCC075	BCC090	BCC110	BCC125	BCC140	BCC160	BCC200	BCC225

not on stock, on request.

Expansion joint

Female connections to be welded.



d (mm)	20	25	32	40	50	63	75	90	110
DN	15	20	25	32	40	50	65	80	100
axial movement (mm)	54	60	68	74	81	95	108	122	149
code	CDDEC020	CDDEC025	CDDEC032	CDDEC040	CDDEC050	CDDEC063	CDDEC075	CDDEC090	CDDEC110



Solvent cement PVC PLUME FF100

code	COLPVC01
------	----------



Cleaning agent 1 l - PVC PLUDET 1000

code	DECAP01
------	---------

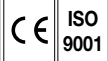
PP fittings



Mandatory packing applies

PP-H body - PS: 10 bar - TS: +10°C/+80°C -

Mandatory packing: 10 pcs up to d 63 or d1 63; individual packing above.



Elbow 90°

Female connections to be welded.



d (mm)	20	25	32	40	50	63	75	90	110
DN	15	20	25	32	40	50	65	80	100
code	C90PS020	C90PS025	C90PS032	C90PS040	C90PS050	C90PS063	C90PS075	C90PS090	C90PS110

Elbow 45°

Female connections to be welded.



d (mm)	20	25	32	40	50	63	75	90	110
DN	15	20	25	32	40	50	65	80	100
code	C45PS020	C45PS025	C45PS032	C45PS040	C45PS050	C45PS063	C45PS075	C45PS090	C45PS110

Equal tee 90°

Female connections to be welded.



d (mm)	20	25	32	40	50	63	75	90	110
DN	15	20	25	32	40	50	65	80	100
code	TEPS020	TEPS025	TEPS032	TEPS040	TEPS050	TEPS063	TEPS075	TEPS090	TEPS110

Female socket

Female connections to be welded.



d (mm)	20	25	32	40	50	63	75	90	110
DN	15	20	25	32	40	50	65	80	100
code	MPS020	MPS025	MPS032	MPS040	MPS050	MPS063	MPS075	MPS090	MPS110

Threaded collar for 3 piece union (BSP)

DIN 8063 - Female threaded.



d (mm)	20	25	32	40	50	63
Ø	1/2"	3/4"	1"	1 1/4"	1 1/2"	2"
code	CU3PPT02	CU3PPT03	CU3PPT04	CU3PPT05	CU3PPT06	CU3PPT07

3 piece union

EPDM tightness - DIN 8063 - Female connections to be welded.



d (mm)	20	25	32	40	50	63
DN	15	20	25	32	40	50
code	U3PPS020	U3PPS025	U3PPS032	U3PPS040	U3PPS050	U3PPS063

Threaded nipple (BSP)

Female connection to be welded (d) - Female threaded.



d (mm)	20	25	32	40	50	63
Ø	1/2"	3/4"	1"	1 1/4"	1 1/2"	2"
code	MTPM2002	MTPM2503	MTPM3204	MTPM4005	MTPM5006	MTPM6307

Adaptor (BSP)

Male connection to be welded (d) - Male threaded.



d (mm)	20	25	32	40	50	63
Ø	1/2"	3/4"	1"	1 1/4"	1 1/2"	2"
code	EAPM2002	EAPM2503	EAPM3204	EAPM4005	EAPM5006	EAPM6307

Hose connection

Male connection to be welded (d1) - Hose connection (d2).



d1 (mm)	20	25	32	40	50	63
d2 (mm)	20/22	25/27	30/32	40/42	50/52	60/64
DN	15	20	25	32	40	50
code	ECPS20	ECPS25	ECPS32	ECPS40	ECPS50	ECPS63

Collar for striated face flange

Female connection to be welded.

Pack: 10 pcs



d (mm)	20	25	32	40	50	63	75	90	110
DN	15	20	25	32	40	50	65	80	100
code	CJPPS020	CJPPS025	CJPPS032	CJPPS040	CJPPS050	CJPPS063	CJPPS075	CJPPS090	CJPPS110

Flange

PE - Reinforced with fiberglass - Connections according to ISO 7005/EN 1092/DIN 2501.



d (mm)	20	25	32	40	50	63	75	90	110
DN	15	20	25	32	40	50	65	80	100
code	BTP020	BTP025	BTP032	BTP040	BTP050	BTP063	BTP075	BTP090	BTP110

Reduction

Male (d1) & female (d2) connections to be welded.



d1 (mm)	25	32	32	40	40	50	50	63	63	75	90	90	110
d2 (mm)	20	20	25	25	32	32	40	40	50	63	63	75	90
code	RSPS2520	RSPS3220	RSPS3225	RSPS4025	RSPS4032	RSPS5032	RSPS5040	RSPS6340	RSPS6350	RSPS7563	RSPS9063	RSPS9075	RSPS11090

Cap

Female connection to be welded.



d (mm)	20	25	32	40	50	63	75	90	110
DN	15	20	25	32	40	50	65	80	100
code	BPS020	BPS025	BPS032	BPS040	BPS050	BPS063	BPS075	BPS090	BPS110

not on stock, on request.

Expansion joint

Male & female connections to be welded.



d (mm)	20	25	32	40	50	63	75	90	110
DN	15	20	25	32	40	50	65	80	100
axial movement (mm)	54	60	68	74	81	95	108	122	149
code	CDDFP020	CDDFP025	CDDFP032	CDDFP040	CDDFP050	CDDFP063	CDDFP075	CDDFP090	CDDFP110

O-ring for union

Pack: 10 pcs



d (mm)	20	25	32	40	50	63	75	90	
EPDM	code	JTUE020	JTUE025	JTUE032	JTUE040	JTUE050	JTUE063	JTUE075	JTUE090
FKM	code	JTUF020	JTUF025	JTUF032	JTUF040	JTUF050	JTUF063	JTUF075	JTUF090

Flat gasket for collar

Pack: 10 pcs



d (mm)	20	25	32	40	50	63	75	90	110	125	140	160	200	225	250	315	
EPDM	code	JPCE020	JPCE025	JPCE032	JPCE040	JPCE050	JPCE063	JPCE075	JPCE090	JPCE110	JPCE125	JPCE140	JPCE160	JPCE200	JPCE225	JPCE250	JPCE315
FKM	code	JPCF020	JPCF025	JPCF032	JPCF040	JPCF050	JPCF063	JPCF075	JPCF090	JPCF110	-	-	-	-	-	-	-

Medium	Concentration	Formula	T°C	Solution	PVC-U	PP	PVDF	PTFE	EPDM	FFM
Hydrochloric acid	30	HCl	40	Aqueous	+	o	+	+	+	+
Hydrochloric acid	30	HCl	20	Aqueous	+	+	+	+	+	+
Hydrochloric acid	30	HCl	60	Aqueous	o	o	+	+	o	o
Hydrochloric acid	30	HCl	80	Aqueous		-	+	+		
Hydrochloric acid	30	HCl	100	Aqueous			+	+		
Hydrochloric acid	30	HCl	120	Aqueous						
Hydrofluoric acid	70	HF	20	Aqueous	o	o	+	+	-	o
Hydrofluoric acid	70	HF	40	Aqueous			+	+		
Hydrofluoric acid	70	HF	60	Aqueous			+	+		
Hydrofluoric acid	70	HF	80	Aqueous			+	+		
Hydrofluoric acid	70	HF	100	Aqueous			+	+		
Hydrofluoric acid	70	HF	120	Aqueous						
Ammonia	25	NH ₄ OH	20	Aqueous	+	+	-	+	+	+
Ammonia	25	NH ₄ OH	40	Aqueous	+	+		+	+	o
Ammonia	25	NH ₄ OH	60	Aqueous	o	+		+	+	
Ammonia	25	NH ₄ OH	80	Aqueous				+		
Ammonia	25	NH ₄ OH	100	Aqueous				+		
Ammonia	25	NH ₄ OH	120	Aqueous						
Sulphuric acid	96	H ₂ SO ₄	20	Aqueous	+	-	+	+	-	+
Sulphuric acid	96	H ₂ SO ₄	40	Aqueous	o		+	+		
Sulphuric acid	96	H ₂ SO ₄	60	Aqueous			+	+		
Sulphuric acid	96	H ₂ SO ₄	80	Aqueous			o	+		
Sulphuric acid	96	H ₂ SO ₄	100	Aqueous			-	+		
Sulphuric acid	96	H ₂ SO ₄	120	Aqueous						
Sulphuric acid	50	H ₂ SO ₄	20	Aqueous	+	+	+	+	+	+
Sulphuric acid	50	H ₂ SO ₄	40	Aqueous	+	+	+	+	+	+
Sulphuric acid	50	H ₂ SO ₄	60	Aqueous	o	+	+	+	o	+
Sulphuric acid	50	H ₂ SO ₄	80	Aqueous			+	+		o
Sulphuric acid	50	H ₂ SO ₄	100	Aqueous			+	+		
Sulphuric acid	50	H ₂ SO ₄	120	Aqueous						
Ferric chloride	50	FeCl ₃	20	Aqueous	+	+	+	+	+	+
Ferric chloride	50	FeCl ₃	40	Aqueous	+	+	+	+	+	+
Ferric chloride	50	FeCl ₃	60	Aqueous		+	+	+	+	+
Ferric chloride	50	FeCl ₃	80	Aqueous		+	+	+	+	+
Ferric chloride	50	FeCl ₃	100	Aqueous			+	+	o	+
Ferric chloride	50	FeCl ₃	120	Aqueous						
Methyl alcohol	100	CH ₃ O	20	Pure	+	+	+	+	+	o
Methyl alcohol	100	CH ₃ O	40	Pure	+	+	+	+	+	o
Methyl alcohol	100	CH ₃ O	60	Pure	o	+	+	+	+	o
Methyl alcohol	100	CH ₃ O	80	Pure			+	+		
Methyl alcohol	100	CH ₃ O	100	Pure			+	+		
Methyl alcohol	100	CH ₃ O	120	Pure						
Sodium hydroxide	30	NaOH	20	Aqueous	+	+	-	+	+	o
Sodium hydroxide	30	NaOH	40	Aqueous	+	+		+	+	-
Sodium hydroxide	30	NaOH	60	Aqueous		+		+	+	
Sodium hydroxide	30	NaOH	80	Aqueous				+		

Medium	Concentration	Formula	T°C	Solution	PVC-U	PP	PVDF	PTFE	EPDM	FFM
Sodium hydroxide	30	NaOH	100	Aqueous						
Sodium hydroxide	30	NaOH	120	Aqueous						
Sodium hypochlorite	12,5% Cl	NaClO	20	Aqueous	+	o	o			
Sodium hypochlorite	12,5% Cl	NaClO	40	Aqueous	+	-	o			
Sodium hypochlorite	12,5% Cl	NaClO	60	Aqueous	o	-				
Sodium hypochlorite	12,5% Cl	NaClO	80	Aqueous						
Sodium hypochlorite	12,5% Cl	NaClO	100	Aqueous						
Sodium hypochlorite	12,5% Cl	NaClO	120	Aqueous						
Hydrogen sulfide	100	H ₂ S	20	Gas	+	+	+			
Hydrogen sulfide	100	H ₂ S	40	Gas	+	+	+			
Hydrogen sulfide	100	H ₂ S	60	Gas	+	+	+			
Hydrogen sulfide	100	H ₂ S	80	Gas			+			
Hydrogen sulfide	100	H ₂ S	100	Gas			+			
Hydrogen sulfide	100	H ₂ S	120	Gas						
Demineralised water	100	H ^o O	20	Pure	+	+	+			
Demineralised water	100	H ^o O	40	Pure	+	+	+			
Demineralised water	100	H ^o O	60	Pure	+	+	+			
Demineralised water	100	H ^o O	80	Pure		+	+			
Demineralised water	100	H ^o O	100	Pure			+			
Demineralised water	100	H ^o O	120	Pure			+			
Calcium hydroxide	SAT	Ca(OH) ₂	20	Aqueous	+	+	o			
Calcium hydroxide	SAT	Ca(OH) ₂	40	Aqueous	+	+	o			
Calcium hydroxide	SAT	Ca(OH) ₂	60	Aqueous	+	+	o			
Calcium hydroxide	SAT	Ca(OH) ₂	80	Aqueous		+	-			
Calcium hydroxide	SAT	Ca(OH) ₂	100	Aqueous						
Calcium hydroxide	SAT	Ca(OH) ₂	120	Aqueous						
Nitric acid	70	HNO ₃	20	Aqueous	o	-	+			
Nitric acid	70	HNO ₃	40	Aqueous	o		+			
Nitric acid	70	HNO ₃	60	Aqueous	-		+			
Nitric acid	70	HNO ₃	80	Aqueous						
Nitric acid	70	HNO ₃	100	Aqueous						
Nitric acid	70	HNO ₃	120	Aqueous						
Sodium chloride	SAT	NaCl	20	Aqueous	+	+	+			
Sodium chloride	SAT	NaCl	40	Aqueous	+	+	o			
Sodium chloride	SAT	NaCl	60	Aqueous	+	+	o			
Sodium chloride	SAT	NaCl	80	Aqueous		+				
Sodium chloride	SAT	NaCl	100	Aqueous						
Sodium chloride	SAT	NaCl	120	Aqueous						
Citric acid	SAT	C ₆ H ₈ O ₇	20	Aqueous	+	+	+			
Citric acid	SAT	C ₆ H ₈ O ₇	40	Aqueous	+	+	+			
Citric acid	SAT	C ₆ H ₈ O ₇	60	Aqueous	o	+	+			
Citric acid	SAT	C ₆ H ₈ O ₇	80	Aqueous		+	+			
Citric acid	SAT	C ₆ H ₈ O ₇	100	Aqueous			+			
Citric acid	SAT	C ₆ H ₈ O ₇	120	Aqueous			+			

+ = resistant - = non-resistant
 o = limited resistance empty = not tested at the specified temperature

The above manual is not binding and does not imply Thermador International's responsibility.