

EI SERIES

SPECIFICATIONS

Max. working pressure	10 bar
Working temperature	+5°C to +60°C
Filter precision	5 micron
Bowl material	Polycarbonate – metal bowl guard fitted on sizes 3000 and above
Max. Inlet pressure	15 bar
Adjustable pressure range	0.5 to 8.5 bar
Drain type	Manual drain / auto drain

PANEL CUT OUT HOLE

BODY SIZE	Ø	MAX. PLATE THICKNESS
2000	33.5 mm	3.5 mm
3000	42.5 mm	3.5 mm
4000	52.5 mm	5.0 mm
5000	52.5 mm	5.0 mm

EIW and EIC series products come complete with gauge and bracket.
Flow rates are based on an 8 bar supply pressure and 6.3 bar set pressure

EIR REGULATORS



3650

EIR SERIES

INTEGRAL GAUGE AND BRACKET

PART NUMBER	BODY SIZE	PORT SIZE	FLOW RATE (L/MIN)	PRICE
EM-EIR2000-01-2	2000	1/8"	1178	£19.69
EM-EIR2000-02-2	2000	1/4"	1200	£19.69
EM-EIR3000-02-2	3000	1/4"	2112	£30.50
EM-EIR3000-03-2	3000	3/8"	2212	£30.50
EM-EIR4000-04-2	4000	1/2"	5312	£40.66
EM-EIR5000-06-2	5000	3/4"	6400	£50.78
EM-EIR5000-10-2	5000	1"	6600	£50.78

EIW FILTER / REGULATORS



3650

EIW SERIES FILTER / REGULATOR

MANUAL DRAIN

PART NUMBER	BODY SIZE	PORT SIZE	FLOW RATE (L/MIN)	PRICE
EM-EIW2000-01-2-5M	2000	1/8"	1078	£28.26
EM-EIW2000-02-2-5M	2000	1/4"	1165	£28.26

AUTO DRAIN

EM-EIW2000-01D-2-5M	2000	1/8"	1078	£44.15
EM-EIW2000-02D-2-5M	2000	1/4"	1165	£44.15

EIW SERIES FILTER / REGULATOR WITH METAL BOWL GUARD

MANUAL DRAIN



3650

PART NUMBER	BODY SIZE	PORT SIZE	FLOW RATE (L/MIN)	PRICE
EM-EIW3000-02-2-5M	3000	1/4"	1998	£38.14
EM-EIW3000-03-2-5M	3000	3/8"	2177	£38.14
EM-EIW4000-04-2-5M	4000	1/2"	5211	£57.17
EM-EIW5000-06-2-5M	5000	3/4"	6200	£79.38
EM-EIW5000-10-2-5M	5000	1"	6400	£79.38

AUTO DRAIN

EM-EIW3000-02D-2-5M	3000	1/4"	1998	£69.85
EM-EIW3000-03D-2-5M	3000	3/8"	2177	£69.85
EM-EIW4000-03D-2-5M	4000	3/8"	5108	£88.92
EM-EIW4000-04D-2-5M	4000	1/2"	5211	£88.92
EM-EIW5000-06D-2-5M	5000	3/4"	6200	£111.16
EM-EIW5000-10D-2-5M	5000	1"	6400	£111.16

EIC FILTER / REGULATOR / LUBRICATORS



3650

EIC SERIES FILTER / REGULATOR / LUBRICATOR

MANUAL DRAIN

PART NUMBER	BODY SIZE	PORT SIZE	FLOW RATE (L/MIN)	PRICE
EM-EIC2010-01-2-5M	2000	1/8"	945	£42.91
EM-EIC2010-02-2-5M	2000	1/4"	960	£42.91

AUTO DRAIN

EM-EIC2010-01D-2-5M	2000	1/8"	945	£58.76
EM-EIC2010-02D-2-5M	2000	1/4"	960	£58.76

EIC SERIES FILTER / REGULATOR / LUBRICATOR WITH METAL BOWL GUARD

MANUAL DRAIN



3650

PART NUMBER	BODY SIZE	PORT SIZE	FLOW RATE (L/MIN)	PRICE
EM-EIC3010-02-2-5M	3000	1/4"	1874	£60.00
EM-EIC3010-03-2-5M	3000	3/8"	1956	£60.00
EM-EIC4010-04-2-5M	4000	1/2"	5120	£86.71
EM-EIC5010-06-2-5M	5000	3/4"	6000	£123.88
EM-EIC5010-10-2-5M	5000	1"	6200	£123.88

AUTO DRAIN

EM-EIC3010-02D-2-5M	3000	1/4"	1874	£59.13
EM-EIC3010-03D-2-5M	3000	3/8"	1956	£91.74
EM-EIC4010-04D-2-5M	4000	1/2"	5120	£118.45
EM-EIC5010-06D-2-5M	5000	3/4"	6000	£155.62
EM-EIC5010-10D-2-5M	5000	1"	6200	£155.62

E SERIES

SPECIFICATIONS

Max. working pressure	10 bar
Working temperature	+5°C to +60°C
Filter precision	5 micron
Bowl material	Polycarbonate – metal bowl guard fitted on sizes 3000 and above
Inlet pressure	15 bar
Adjustable pressure range	0.5 to 8.5 bar
Drain type	Manual drain / auto drain

PANEL CUT OUT HOLE

BODY SIZE	Ø	MAX. PLATE THICKNESS
2000	33.5 mm	3.5 mm
3000	42.5 mm	3.5 mm
4000	52.5 mm	5.0 mm
5000	52.5 mm	5.0 mm

EW and EC series products come complete with gauge and bracket.
Flow rates are based on an 8 bar supply pressure and 6.3 bar set pressure

ER REGULATORS



3650

ER SERIES REGULATOR INCLUDES GAUGE AND BRACKET

PART NUMBER	BODY SIZE	PORT SIZE	FLOW RATE (L/MIN)	PRICE
EM-ER2000-01-5	2000	1/8"	1178	£19.65
EM-ER2000-02-5	2000	1/4"	1200	£19.65
EM-ER3000-02-5	3000	1/4"	2112	£30.50
EM-ER3000-03-5	3000	3/8"	2212	£30.50
EM-ER4000-03-5	4000	3/8"	5020	£40.66
EM-ER4000-04-5	4000	1/2"	5312	£40.66
EM-ER5000-06-5	5000	3/4"	6400	£50.81
EM-ER5000-10-5	5000	1"	6600	£50.81

EW FILTER / REGULATORS



3650

EW SERIES FILTER / REGULATOR MANUAL DRAIN

PART NUMBER	BODY SIZE	PORT SIZE	FLOW RATE (L/MIN)	PRICE
EM-EW2000-01-5	2000	1/8"	1078	£28.29
EM-EW2000-02-5	2000	1/4"	1165	£28.29

AUTO DRAIN

EM-EW2000-01D-5	2000	1/8"	1300	£44.15
EM-EW2000-02D-5	2000	1/4"	1345	£44.15



3650

EW SERIES FILTER / REGULATOR WITH METAL BOWL GUARD MANUAL DRAIN

PART NUMBER	BODY SIZE	PORT SIZE	FLOW RATE (L/MIN)	PRICE
EM-EW3000-02-5	3000	1/4"	1998	£38.10
EM-EW3000-03-5	3000	3/8"	2177	£38.10
EM-EW4000-03-5	4000	3/8"	5108	£57.13
EM-EW4000-04-5	4000	1/2"	5211	£57.13
EM-EW5000-06-5	5000	3/4"	6200	£79.38
EM-EW5000-10-5	5000	1"	6400	£79.38

AUTO DRAIN

EM-EW3000-02D-5	3000	1/4"	2310	£69.85
EM-EW3000-03D-5	3000	3/8"	2375	£69.85
EM-EW4000-03D-5	4000	3/8"	5321	£88.92
EM-EW4000-04D-5	4000	1/2"	5532	£88.92
EM-EW5000-06D-5	5000	3/4"	7700	£111.16
EM-EW5000-10D-5	5000	1"	8000	£111.16

EC FILTER / REGULATOR / LUBRICATORS



3650

EC SERIES FILTER / REGULATOR / LUBRICATOR MANUAL DRAIN

PART NUMBER	BODY SIZE	PORT SIZE	FLOW RATE (L/MIN)	PRICE
EM-EC2010-01-5	2000	1/8"	945	£42.91
EM-EC2010-02-5	2000	1/4"	960	£42.91

AUTO DRAIN

EM-EC2010-01D-5	2000	1/8"	945	£58.76
EM-EC2010-02D-5	2000	1/4"	960	£58.76



3650

EC SERIES FILTER / REGULATOR / LUBRICATOR WITH METAL BOWL GUARD MANUAL DRAIN

PART NUMBER	BODY SIZE	PORT SIZE	FLOW RATE (L/MIN)	PRICE
EM-EC3010-02-5	3000	1/4"	1874	£60.00
EM-EC3010-03-5	3000	3/8"	1956	£60.00
EM-EC4010-03-5	4000	3/8"	4923	£86.71
EM-EC4010-04-5	4000	1/2"	5120	£86.71
EM-EC5010-06-5	5000	3/4"	6000	£123.88
EM-EC5010-10-5	5000	1"	6200	£123.88

AUTO DRAIN

EM-EC3010-02D-5	3000	1/4"	1874	£91.74
EM-EC3010-03D-5	3000	3/8"	1956	£91.74
EM-EC4010-03D-5	4000	3/8"	4923	£118.45
EM-EC4010-04D-5	4000	1/2"	5120	£118.45
EM-EC5010-06D-5	5000	3/4"	6000	£155.62
EM-EC5010-10D-5	5000	1"	6200	£155.62

E SERIES

EC FILTER / REGULATOR / LUBRICATORS

SPECIFICATIONS

Max. working pressure	10 bar
Working temperature	+5°C to +60°C
Filter precision	5 micron
Bowl material	Polycarbonate – metal bowl guard fitted on sizes 3000 and above
Inlet pressure	15 bar
Adjustable pressure range	0.5 to 8.5 bar
Drain type	Manual drain / auto drain

PANEL CUT OUT HOLE

BODY SIZE	Ø	MAX. PLATE THICKNESS
2000	33.5 mm	3.5 mm
3000	42.5 mm	3.5 mm
4000	52.5 mm	5.0 mm
5000	52.5 mm	5.0 mm

EC SERIES FILTER / REGULATOR / LUBRICATOR MANUAL DRAIN



3650

EC SERIES FILTER / REGULATOR / LUBRICATOR WITH METAL BOWL GUARD MANUAL DRAIN



3650

PART NUMBER	BODY SIZE	PORT SIZE	FLOW RATE (L/MIN)	PRICE
EM-EC2000-01-5	2000	1/8"	1000	£47.36
EM-EC2000-02-5	2000	1/4"	1100	£47.36

PART NUMBER	BODY SIZE	PORT SIZE	FLOW RATE (L/MIN)	PRICE
EM-EC3000-02-5	3000	1/4"	1950	£72.75
EM-EC3000-03-5	3000	3/8"	2105	£72.75
EM-EC4000-03-5	4000	3/8"	4950	£98.10
EM-EC4000-04-5	4000	1/2"	5200	£98.10
EM-EC5000-06-5	5000	3/4"	6200	£135.27
EM-EC5000-10-5	5000	1"	6500	£135.27

AUTO DRAIN

EM-EC2000-01D-5	2000	1/8"	1000	£63.18
EM-EC2000-02D-5	2000	1/4"	1100	£63.18

AUTO DRAIN

EM-EC3000-02D-5	3000	1/4"	1950	£104.50
EM-EC3000-03D-5	3000	3/8"	2105	£104.50
EM-EC4000-03D-5	4000	3/8"	4950	£129.92
EM-EC4000-04D-5	4000	1/2"	5200	£129.92
EM-EC5000-06D-5	5000	3/4"	6200	£167.02
EM-EC5000-10D-5	5000	1"	6500	£167.02

EC series products come complete with gauge and bracket. Flow rates are based on an 8 bar supply pressure and 6.3 bar set pressure

EF FILTERS

EF SERIES FILTER MANUAL DRAIN



3650

EF SERIES FILTER WITH METAL BOWL GUARD MANUAL DRAIN



3650

PART NUMBER	BODY SIZE	PORT SIZE	FLOW RATE (L/MIN)	PRICE
EM-EF2000-01J	2000	1/8"	1222	£11.78
EM-EF2000-02J	2000	1/4"	1278	£11.78

PART NUMBER	BODY SIZE	PORT SIZE	FLOW RATE (L/MIN)	PRICE
EM-EF3000-02J	3000	1/4"	2006	£17.79
EM-EF3000-03J	3000	3/8"	2148	£17.79
EM-EF4000-03J	4000	3/8"	5120	£24.81
EM-EF4000-04J	4000	1/2"	5430	£24.81
EM-EF5000-06J	5000	3/4"	8200	£36.90
EM-EF5000-10J	5000	1"	8500	£36.90

AUTO DRAIN

EM-EF2000-01DJ	2000	1/8"	1222	£27.64
EM-EF2000-02DJ	2000	1/4"	1278	£27.64

AUTO DRAIN

EM-EF3000-02DJ	3000	1/4"	2006	£49.54
EM-EF3000-03DJ	3000	3/8"	2148	£49.54
EM-EF4000-03DJ	4000	3/8"	5120	£56.55
EM-EF4000-04DJ	4000	1/2"	5430	£56.55
EM-EF5000-06DJ	5000	3/4"	8200	£68.61
EM-EF5000-10DJ	5000	1"	8500	£68.61

EF series products do not include a gauge and bracket. Flow rates are based on an 8 bar supply pressure and 6.3 bar set pressure

E SERIES

EL LUBRICATORS



3650



3650

EL SERIES LUBRICATOR
MANUAL DRAIN

PART NUMBER	BODY SIZE	PORT SIZE	FLOW RATE (L/MIN)	PRICE
EM-EL2000-01J	2000	1/8"	1300	£11.78
EM-EL2000-02J	2000	1/4"	1345	£11.78

EL SERIES LUBRICATOR
WITH METAL BOWL GUARD
MANUAL DRAIN

PART NUMBER	BODY SIZE	PORT SIZE	FLOW RATE (L/MIN)	PRICE
EM-EL3000-02J	3000	1/4"	2310	£17.79
EM-EL3000-03J	3000	3/8"	2375	£17.79
EM-EL4000-03J	4000	3/8"	5321	£24.81
EM-EL4000-04J	4000	1/2"	5532	£24.81
EM-EL5000-06J	5000	3/4"	7700	£39.03
EM-EL5000-10J	5000	1"	8000	£39.03

EL series products do not include a gauge and bracket. Flow rates are based on an 8 bar supply pressure and 6.3 bar set pressure

AUTO DRAINS

FEATURES

- Drip Leg / Auto Drain
- Fully automatic operation
- Auto drain discharges the condensate each time the maximum permissible level in the bowl is reached
- When total pressure is removed from system, drain will also open
- Collected liquids can be piped away

SPECIFICATIONS

	AUTO DRAIN	DRAIN KIT
Working medium	Compressed air	Compressed air
Working temperature	+5°C to +60°C	+5°C to +60°C
Working pressure	1.5 to 10 bar	1.5 to 10 bar
Guaranteed pressure resistance	15 bar	15 bar



3650

DRIP LEG AUTO DRAIN
150 ML BOWL CAPACITY

PART NUMBER	PORT	OUTSIDE DIAMETER	LENGTH	PRICE
EM-HED402-02	1/4"	72 mm	162 mm	£57.17
EM-HED402-03	3/8"	72 mm	162 mm	£57.17
EM-HED402-04	1/2"	72 mm	162 mm	£57.17

Installation:
Install drainer
vertically with
drain port facing
down



3650

DRIP LEG AUTO DRAIN
200 ML BOWL CAPACITY

PART NUMBER	PORT	OUTSIDE DIAMETER	LENGTH	PRICE
EM-HAD402	1/2"	82 mm	182 mm	£46.51

SHUT-OFF VALVES



3650

3/2 SHUT-OFF VALVE

PART NUMBER	BODY SIZE	PORT	PRICE
EM-EVSH2000-01	2000	1/8"	£22.67
EM-EVSH2000-02	2000	1/4"	£22.67
EM-EVSH3000-02	3000	1/4"	£33.99
EM-EVSH3000-03	3000	3/8"	£33.95
EM-EVSH4000-03	4000	3/8"	£47.56
EM-EVSH4000-04	4000	1/2"	£47.56

E SERIES ACCESSORIES

Six



AUTO DRAIN KIT

3650

PART NUMBER	FOR USE WITH	PRICE
EM-ZDFS-08	3000	£28.48
EM-ZDFS-10	4000 / 5000	£28.67



TYPE 40 MOUNTING BRACKET
SUITABLE FOR EF & EL SERIES

3650

PART NUMBER	FOR USE WITH	PRICE
EM-B240	EF/EL 2000	£2.60
EM-B340	EF/EL 3000	£3.45
EM-B440	EF/EL 4000	£4.34
EM-B640	EF/EL 5000	£6.94



PRESSURE GAUGE

3650

PART NUMBER	SERIES	DIA.	THREAD	PRICE
EM-EYZ4001051B-06	2000 / 3000	40 mm	1/8"	£3.72
EM-EYZ5001051B-08	4000 / 5000	50 mm	1/4"	£4.07



AIR TAKE OFF SPACER

3650

PART NUMBER	FOR USE WITH	PORT SIZE	PRICE
EM-Y21-01	EIC/EC2000/10	1/8"	£8.65
EM-Y21-02	EIC/EC2000/10	1/4"	£8.65
EM-Y31-01	EIC/EC3000/10	1/8"	£12.98
EM-Y31-02	EIC/EC3000/10	1/4"	£12.98
EM-Y41-02	EIC/EC4000/10	1/4"	£15.56
EM-Y41-03	EIC/EC4000/10	3/8"	£15.56
EM-Y61-03	EIC/EC5000/10	3/8"	£21.61
EM-Y61-04	EIC/EC5000/10	1/2"	£21.61



TYPE 20 MOUNTING BRACKET
SUITABLE FOR ER / EW / EIR
& EIW SERIES

3650

PART NUMBER	FOR USE WITH	PRICE
EM-B220	ER/EW 2000	£2.60
EM-B320	ER/EW 3000	£3.45
EM-B420	ER/EW 4000/5000	£4.34



T-TYPE MOUNTING BRACKET
SUITABLE FOR EC SERIES

3650

PART NUMBER	FOR USE WITH	PRICE
EM-Y20T	EC2000	£6.05
EM-Y30T	EC3000	£9.50
EM-Y40T	EC4000	£11.24
EM-Y60T	EC5000	£13.84



FILTER ELEMENT

3650

PART NUMBER	FILTER PRECISION	FOR USE WITH	PRICE
EM-EF2000-005-2	5 Micron	EI2000 / E2000	£1.40
EM-EF2000-005-1	25 Micron	EI2000 / E2000	£1.40
EM-EF3000-005-2	5 Micron	EI3000 / E3000	£1.90
EM-EF3000-005-1	25 Micron	EI3000 / E3000	£1.90
EM-EF4000-005-2	5 Micron	EI4000 / E4000	£4.15
EM-EF4000-005-1	25 Micron	EI4000 / E4000	£4.15
EM-EF5000-005-2	5 Micron	EI5000 / E5000	£6.47
EM-EF5000-005-1	25 Micron	EI5000 / E5000	£6.47



INTERNAL PRESSURE GAUGE
SUITABLE FOR EI SERIES

3650

PART NUMBER	FOR USE WITH	PRICE
EM-FB-0102	EI Series	£5.47

IA, IAC & IASB SERIES

FEATURES / BENEFITS

- Front/rear covers machined by high precision CNC machine, giving high consistency and concentricity
- Japanese anti-dust seal, providing better sealing performance and dust protection
- German grease provides a longer cylinder life
- Riveted cylinder barrel structure and front / rear cover, gives higher efficiency, performance and improved compression resistance
- Cap positioning machine guarantees front and rear caps locate at same horizontal position, making them easier to install

SPECIFICATIONS

Cylinder type	Single or double acting Magnetic positioning
Materials	Aluminium end blocks. S45C hard chrome carbon steel piston rod. Stainless steel barrel. NBR seals.
Max. operating pressure	10 bar
Operating temperature	-20°C to +80°C (dry air)
Speed range	10 to 1000 mm/s
Bore	ø12 mm, ø16 mm, ø20 mm, ø25 mm
Mounting	Foot, front / rear flange and rear clevis
Available stroke length	0-1000 mm
Cushion type	Rubber or adjustable air cushion

New

IA SERIES DOUBLE ACTING RUBBER CUSHIONED

10 BORE



3610

PART NUMBER	BORE	STROKE	PRICE
EM-IA10X25-S	10 mm	25 mm	£19.19
EM-IA10X50-S	10 mm	50 mm	£20.44
EM-IA10X80-S	10 mm	80 mm	£22.98
EM-IA10X100-S	10 mm	100 mm	£22.98

12 BORE

EM-IA12X25-S	12 mm	25 mm	£26.95
EM-IA12X50-S	12 mm	50 mm	£28.51
EM-IA12X80-S	12 mm	80 mm	£33.27
EM-IA12X100-S	12 mm	100 mm	£33.27

16 BORE

EM-IA16X25-S	16 mm	25 mm	£25.16
EM-IA16X50-S	16 mm	50 mm	£26.72
EM-IA16X80-S	16 mm	80 mm	£29.84
EM-IA16X100-S	16 mm	100 mm	£29.84
EM-IA16X125-S	16 mm	125 mm	£31.40
EM-IA16X150-S	16 mm	150 mm	£33.00

20 BORE

EM-IA20X25-S	20 mm	25 mm	£26.37
EM-IA20X50-S	20 mm	50 mm	£28.40
EM-IA20X80-S	20 mm	80 mm	£32.41
EM-IA20X100-S	20 mm	100 mm	£32.41
EM-IA20X125-S	20 mm	125 mm	£34.44
EM-IA20X150-S	20 mm	150 mm	£36.43

25 BORE

EM-IA25X25-S	25 mm	25 mm	£28.36
EM-IA25X50-S	25 mm	50 mm	£30.54
EM-IA25X80-S	25 mm	80 mm	£34.91
EM-IA25X100-S	25 mm	100 mm	£34.91
EM-IA25X125-S	25 mm	125 mm	£37.09
EM-IA25X150-S	25 mm	150 mm	£39.28

New Additions

IAC SERIES DOUBLE ACTING AIR CUSHIONED 16 BORE



3610

PART NUMBER	BORE	STROKE	PRICE
EM-IAC16X25-S	16 mm	25 mm	£32.69
EM-IAC16X50-S	16 mm	50 mm	£34.75
EM-IAC16X80-S	16 mm	80 mm	£38.77
EM-IAC16X100-S	16 mm	100 mm	£38.81
EM-IAC16X125-S	16 mm	125 mm	£40.80
EM-IAC16X150-S	16 mm	150 mm	£42.87

20 BORE

EM-IAC20X25-S	20 mm	25 mm	£34.29
EM-IAC20X50-S	20 mm	50 mm	£36.90
EM-IAC20X80-S	20 mm	80 mm	£42.12
EM-IAC20X100-S	20 mm	100 mm	£42.12
EM-IAC20X125-S	20 mm	125 mm	£44.78
EM-IAC20X150-S	20 mm	150 mm	£47.35

25 BORE

EM-IAC25X25-S	25 mm	25 mm	£38.50
EM-IAC25X50-S	25 mm	50 mm	£40.10
EM-IAC25X80-S	25 mm	80 mm	£45.40
EM-IAC25X100-S	25 mm	100 mm	£45.40
EM-IAC25X125-S	25 mm	125 mm	£48.21
EM-IAC25X150-S	25 mm	150 mm	£51.06

New Additions

IASB SERIES SINGLE ACTING SPRING RETURN 12 BORE



3610

PART NUMBER	BORE	STROKE	PRICE
EM-IASB12X25-S	12 mm	25 mm	£33.54
EM-IASB12X50-S	12 mm	50 mm	£37.05
EM-IASB12X80-S	12 mm	80 mm	£34.75
EM-IASB12X125-S	12 mm	125 mm	£36.47
EM-IASB12X150-S	12 mm	150 mm	£38.19

16 BORE

EM-IASB16X25-S	16 mm	25 mm	£37.60
EM-IASB16X50-S	16 mm	50 mm	£39.94
EM-IASB16X80-S	16 mm	80 mm	£44.62
EM-IASB16X125-S	16 mm	125 mm	£46.96
EM-IASB16X150-S	16 mm	150 mm	£49.30

20 BORE

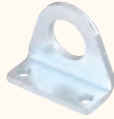
EM-IASB20X25-S	20 mm	25 mm	£39.43
EM-IASB20X50-S	20 mm	50 mm	£42.44
EM-IASB20X80-S	20 mm	80 mm	£48.44
EM-IASB20X125-S	20 mm	125 mm	£51.45
EM-IASB20X150-S	20 mm	150 mm	£54.57

25 BORE

EM-IASB25X10-S	25 mm	10 mm	£38.58
EM-IASB25X25-S	25 mm	25 mm	£42.36
EM-IASB25X50-S	25 mm	50 mm	£45.63
EM-IASB25X80-S	25 mm	80 mm	£52.19
EM-IASB25X125-S	25 mm	125 mm	£55.46
EM-IASB25X150-S	25 mm	150 mm	£58.66

IASB / IAS / IA SERIES ACCESSORIES

Six



MOUNTING FOOT (2 PIECES)

3610

PART NUMBER	CYLINDER BORE	PRICE
EM-FJ-IA12LB	12 mm / 16 mm	£3.63
EM-FJ-IA20LB	20 mm / 25 mm	£3.98



SINGLE PISTON ROD CLEVIS

3610

PART NUMBER	CYLINDER BORE	THREAD	PRICE
EM-FJ-M6X1IJ	12 mm / 16 mm	M6 x 1	£2.27
EM-FJ-M8X1.25IJ	20 mm	M8 x 1.25	£3.44
EM-FJ-M10X1.25IJ	25 mm	M10 x 1.25	£4.06



REAR CLEVIS

3610

PART NUMBER	CYLINDER BORE	PRICE
EM-FJ-IA12SDB	12 mm / 16 mm	£7.30
EM-FJ-IA20SDB	20 mm / 25 mm	£7.30



MAGNETIC PROXIMITY SWITCH

3610

PART NUMBER	DESCRIPTION	PRICE
EM-HX-03R	Reed switch 2 wire N/O 5-240V AC/DC 1 m cable	£8.51
EM-HX-03N	NPN solid state switch 2 wire N/O 5-30V DC 1 m cable	£25.82
EM-HX-03P	PNP solid state switch 2 wire N/O 5-30V DC 1 m cable	£25.82



FRONT FLANGE

3610

PART NUMBER	CYLINDER BORE	PRICE
EM-FJ-IA12FA	12 mm / 16 mm	£4.06
EM-FJ-IA20FA	20 mm / 25 mm	£7.30



BK81 METAL BAND

3610

PART NUMBER	BORE	PRICE
EM-BK-80	6 – 63 mm	£1.99



PISTON ROD CLEVIS AND PIN

3610

PART NUMBER	CYLINDER BORE	THREAD	PRICE
EM-FJ-M6X1YCJ	12 mm / 16 mm	M6 x 1	£3.24
EM-FJ-M8X1.25YCJ	20 mm	M8 x 1.25	£4.88
EM-FJ-M10X1.25YCJ	25 mm	M10 x 1.25	£6.87

FVBC SERIES

DESCRIPTION

The updated FVBC/VBC series pneumatic cylinder completely fits to ISO15552 standard, bore sizes range from 32mm to 100mm. According to working regulation and force focus, the cylinder was newly designed with completely change at covers and piston, with full PU sealing system, magnet integrated into wear ring slot, double cushion structure, strengthened cushion needle and guider. Also we studied every process that will result in better quality, from material choice, die-casting technology, covers machining consistency, testing style, etc. all made a further improvement. The pneumatic cylinder is automatically machined by high precision CNC machine, robots, and automatically assembled and tested.

FEATURES

- Highlighted products for process optimization
- Completely according to ISO15552 standard
- All PU sealing system
- Strong guiding design with high concentricity
- Bronze bearing with much better lateral loading
- Strengthened cushion design, soft ending
- Double cushioning system
- 2000KM loaded stroke life

SPECIFICATIONS

Cylinder type	Double acting, magnetic positioning
Materials	Aluminium end caps. S45C hard chrome carbon steel piston rod. Hard anodised aluminium barrel. PU seals.
Max. working pressure	10 bar
Operating temperature	-20°C to +80°C (dry air)
Speed range	50 to 800 mm/s
Bore	ø32 mm, ø40 mm, ø50 mm, ø63 mm, ø80 mm, ø100 mm
Mounting	Foot, rear trunnion, 90° rear trunnion, front flange, rear flange.
Available stroke length	0 – 2000 mm
Cushion type	Adjustable air cushion



3610

FVBC SERIES CYLINDER

32 BORE

PART NUMBER	BORE	STROKE	PRICE
EM-FVBC32X25-S	32 mm	25 mm	£52.26
EM-FVBC32X50-S	32 mm	50 mm	£55.03
EM-FVBC32X80-S	32 mm	80 mm	£60.57
EM-FVBC32X100-S	32 mm	100 mm	£60.57
EM-FVBC32X125-S	32 mm	125 mm	£63.34
EM-FVBC32X160-S	32 mm	160 mm	£68.88
EM-FVBC32X200-S	32 mm	200 mm	£71.65
EM-FVBC32X250-S	32 mm	250 mm	£77.19

40 BORE

EM-FVBC40X25-S	40 mm	25 mm	£68.02
EM-FVBC40X50-S	40 mm	50 mm	£71.53
EM-FVBC40X80-S	40 mm	80 mm	£78.98
EM-FVBC40X100-S	40 mm	100 mm	£78.98
EM-FVBC40X125-S	40 mm	125 mm	£82.84
EM-FVBC40X160-S	40 mm	160 mm	£90.29
EM-FVBC40X200-S	40 mm	200 mm	£93.72
EM-FVBC40X250-S	40 mm	250 mm	£101.17

50 BORE

EM-FVBC50X25-S	50 mm	25 mm	£83.58
EM-FVBC50X50-S	50 mm	50 mm	£88.22
EM-FVBC50X80-S	50 mm	80 mm	£97.23
EM-FVBC50X100-S	50 mm	100 mm	£97.19
EM-FVBC50X125-S	50 mm	125 mm	£101.48
EM-FVBC50X160-S	50 mm	160 mm	£110.41
EM-FVBC50X200-S	50 mm	200 mm	£115.13
EM-FVBC50X250-S	50 mm	250 mm	£124.08

63 BORE

EM-FVBC63X25-S	63 mm	25 mm	£97.86
EM-FVBC63X50-S	63 mm	50 mm	£103.74
EM-FVBC63X80-S	63 mm	80 mm	£115.05
EM-FVBC63X100-S	63 mm	100 mm	£115.05
EM-FVBC63X125-S	63 mm	125 mm	£120.55
EM-FVBC63X160-S	63 mm	160 mm	£131.86
EM-FVBC63X200-S	63 mm	200 mm	£137.32
EM-FVBC63X250-S	63 mm	250 mm	£148.56
EM-FVBC63X320-S	63 mm	320 mm	£170.82
EM-FVBC63X400-S	63 mm	400 mm	£182.17
EM-FVBC63X500-S	63 mm	500 mm	£204.75

80 BORE

EM-FVBC80X25-S	80 mm	25 mm	£132.57
EM-FVBC80X50-S	80 mm	50 mm	£140.37
EM-FVBC80X80-S	80 mm	80 mm	£155.97
EM-FVBC80X100-S	80 mm	100 mm	£155.97
EM-FVBC80X125-S	80 mm	125 mm	£163.77
EM-FVBC80X160-S	80 mm	160 mm	£179.72
EM-FVBC80X200-S	80 mm	200 mm	£187.56
EM-FVBC80X250-S	80 mm	250 mm	£203.16
EM-FVBC80X320-S	80 mm	320 mm	£234.32
EM-FVBC80X400-S	80 mm	400 mm	£250.31
EM-FVBC80X500-S	80 mm	500 mm	£281.51

100 BORE

EM-FVBC100X25-S	100 mm	25 mm	£162.24
EM-FVBC100X50-S	100 mm	50 mm	£172.42
EM-FVBC100X80-S	100 mm	80 mm	£192.31
EM-FVBC100X100-S	100 mm	100 mm	£192.32
EM-FVBC100X125-S	100 mm	125 mm	£202.45
EM-FVBC100X160-S	100 mm	160 mm	£222.69
EM-FVBC100X200-S	100 mm	200 mm	£232.87
EM-FVBC100X250-S	100 mm	250 mm	£253.15
EM-FVBC100X320-S	100 mm	320 mm	£293.32
EM-FVBC100X400-S	100 mm	400 mm	£313.60
EM-FVBC100X500-S	100 mm	500 mm	£353.77



VBC SERIES

DESCRIPTION

VBC series pneumatic cylinder is a pneumatic cylinder which conforms to ISO15552 standard , bore sizes range from 32mm to 320mm. According to working regulation and force focus, the pneumatic cylinder was newly designed with completely change at covers and piston, with full PU sealing system, magnet integrated into wear ring slot, double cushion structure, strengthened cushion needle and guider. Also we studied every process that will result in better quality, from material choice, die-casting technology, covers machining consistency, testing style, etc. all made a further improvement. The pneumatic cylinder is automatically machined by high precision CNC machine, robots, and automatically assembled and tested. Available with VBC series mickey mouse type pneumatic cylinder and LBC series tie-rod type pneumatic cylinder.

FEATURES

- Highlighted products for process optimization
- Completely according to ISO15552 standard
- All PU sealing system
- Strong guiding design with high concentricity
- Bronze bearing with much better lateral loading
- Strengthened cushion design, soft ending
- Double cushioning system
- 2000KM loaded stroke life

SPECIFICATIONS

Cylinder type	Double acting, magnetic positioning
Materials	Aluminium end caps. S45C hard chrome carbon steel piston rod. Hard anodised aluminium barrel. PU seals.
Max. working pressure	10 bar
Operating temperature	-20°C to +80°C (dry air)
Speed range	50 – 800 mm/s
Mounting	Foot, rear trunnion, 90° rear trunnion, front flange, rear flange.
Available bore sizes	ø32 – 200 mm
Available stroke length	0 – 3000 mm
Cushion type	Adjustable air cushion



3610

VBC SERIES STANDARD PROFILE CYLINDER

32 BORE

PART NUMBER	BORE	STROKE	PRICE
EM-VBC32X25-S	32 mm	25 mm	£45.44
EM-VBC32X50-S	32 mm	50 mm	£50.02
EM-VBC32X80-S	32 mm	80 mm	£53.67
EM-VBC32X100-S	32 mm	100 mm	£53.67
EM-VBC32X125-S	32 mm	125 mm	£56.98
EM-VBC32X160-S	32 mm	160 mm	£62.79
EM-VBC32X200-S	32 mm	200 mm	£62.79
EM-VBC32X250-S	32 mm	250 mm	£68.57
EM-VBC32X320-S	32 mm	320 mm	£76.83

40 BORE

EM-VBC40X25-S	40 mm	25 mm	£51.21
EM-VBC40X50-S	40 mm	50 mm	£56.66
EM-VBC40X80-S	40 mm	80 mm	£61.06
EM-VBC40X100-S	40 mm	100 mm	£61.06
EM-VBC40X125-S	40 mm	125 mm	£65.47
EM-VBC40X160-S	40 mm	160 mm	£70.20
EM-VBC40X200-S	40 mm	200 mm	£70.20
EM-VBC40X250-S	40 mm	250 mm	£76.02
EM-VBC40X320-S	40 mm	320 mm	£92.32

50 BORE

EM-VBC50X25-S	50 mm	25 mm	£75.61
EM-VBC50X50-S	50 mm	50 mm	£75.61
EM-VBC50X80-S	50 mm	80 mm	£81.12
EM-VBC50X100-S	50 mm	100 mm	£81.12
EM-VBC50X125-S	50 mm	125 mm	£86.61
EM-VBC50X160-S	50 mm	160 mm	£90.76
EM-VBC50X200-S	50 mm	200 mm	£90.76
EM-VBC50X250-S	50 mm	250 mm	£98.17
EM-VBC50X320-S	50 mm	320 mm	£111.08

63 BORE

EM-VBC63X25-S	63 mm	25 mm	£90.28
EM-VBC63X50-S	63 mm	50 mm	£90.28
EM-VBC63X80-S	63 mm	80 mm	£96.69
EM-VBC63X100-S	63 mm	100 mm	£96.69
EM-VBC63X125-S	63 mm	125 mm	£101.52
EM-VBC63X160-S	63 mm	160 mm	£111.43
EM-VBC63X200-S	63 mm	200 mm	£111.43
EM-VBC63X250-S	63 mm	250 mm	£121.37
EM-VBC63X320-S	63 mm	320 mm	£138.65
EM-VBC63X400-S	63 mm	400 mm	£151.13
EM-VBC63X500-S	63 mm	500 mm	£170.90

80 BORE

PART NUMBER	BORE	STROKE	PRICE
EM-VBC80X25-S	80 mm	25 mm	£116.48
EM-VBC80X50-S	80 mm	50 mm	£116.48
EM-VBC80X80-S	80 mm	80 mm	£126.93
EM-VBC80X100-S	80 mm	100 mm	£126.93
EM-VBC80X125-S	80 mm	125 mm	£137.39
EM-VBC80X160-S	80 mm	160 mm	£147.07
EM-VBC80X200-S	80 mm	200 mm	£147.07
EM-VBC80X250-S	80 mm	250 mm	£160.26
EM-VBC80X320-S	80 mm	320 mm	£183.97
EM-VBC80X400-S	80 mm	400 mm	£201.60
EM-VBC80X500-S	80 mm	500 mm	£229.68

100 BORE

EM-VBC100X25-S	100 mm	25 mm	£148.76
EM-VBC100X50-S	100 mm	50 mm	£148.76
EM-VBC100X80-S	100 mm	80 mm	£159.78
EM-VBC100X100-S	100 mm	100 mm	£159.78
EM-VBC100X125-S	100 mm	125 mm	£170.78
EM-VBC100X160-S	100 mm	160 mm	£183.42
EM-VBC100X200-S	100 mm	200 mm	£183.42
EM-VBC100X250-S	100 mm	250 mm	£198.32
EM-VBC100X320-S	100 mm	320 mm	£223.71
EM-VBC100X400-S	100 mm	400 mm	£242.90
EM-VBC100X500-S	100 mm	500 mm	£272.65

125 BORE

EM-VBC125X50-S	125 mm	50 mm	£252.13
EM-VBC125X80-S	125 mm	80 mm	£270.04
EM-VBC125X100-S	125 mm	100 mm	£270.04
EM-VBC125X125-S	125 mm	125 mm	£281.78
EM-VBC125X160-S	125 mm	160 mm	£300.69
EM-VBC125X200-S	125 mm	200 mm	£300.69
EM-VBC125X250-S	125 mm	250 mm	£319.61
EM-VBC125X320-S	125 mm	320 mm	£356.43
EM-VBC125X400-S	125 mm	400 mm	£374.29
EM-VBC125X500-S	125 mm	500 mm	£414.26



3610

FEMALE REAR TRUNNION AND PIN

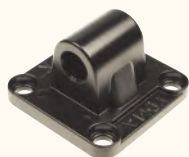
PART NUMBER	CYLINDER BORE	PRICE
EM-FJ-VBC32CB	32 mm	£5.62
EM-FJ-VBC40CB	40 mm	£6.21
EM-FJ-VBC50CB	50 mm	£8.97
EM-FJ-VBC63CB	63 mm	£10.73
EM-FJ-VBC80CB	80 mm	£15.14
EM-FJ-VBC100CB	100 mm	£21.77
EM-FJ-VBC125CB	125 mm	£38.79



3610

PISTON ROD CLEVIS AND PIN

PART NUMBER	CYLINDER BORE	THREAD	PRICE
EM-FJ-M10X1.25YCJ	32 mm	M10x1.25	£6.87
EM-FJ-M12X1.25YCJ	40 mm	M12x1.25	£7.26
EM-FJ-M16X1.5YCJ	50 mm / 63 mm	M16x1.5	£11.39
EM-FJ-M20X1.5YCJ	80 mm / 100 mm	M20x1.5	£19.89
EM-FJ-M27X2YCJ	125 mm	M27x2	£54.92



3610

MALE REAR TRUNNION

PART NUMBER	CYLINDER BORE	PRICE
EM-FJ-VBC32CA	32 mm	£4.84
EM-FJ-VBC40CA	40 mm	£5.46
EM-FJ-VBC50CA	50 mm	£6.71
EM-FJ-VBC63CA	63 mm	£8.51
EM-FJ-VBC80CA	80 mm	£12.17
EM-FJ-VBC100CA	100 mm	£17.32
EM-FJ-VBC125CA	125 mm	£29.84



3610

PISTON ROD SPHERICAL ROD EYE

PART NUMBER	CYLINDER BORE	THREAD	PRICE
EM-FJ-M10X1.25BJ	32 mm	M10x1.25	£4.76
EM-FJ-M12X1.25BJ	40 mm	M12x1.25	£5.54
EM-FJ-M16X1.5BJ	50 mm / 63 mm	M16x1.5	£8.74
EM-FJ-M20X1.5BJ	80 mm / 100 mm	M20x1.5	£15.06
EM-FJ-M27X2BJ	125 mm	M27x2	£35.65



3610

90° MALE REAR TRUNNION

PART NUMBER	CYLINDER BORE	PRICE
EM-FJ-VBC32CR	32 mm	£7.77
EM-FJ-VBC40CR	40 mm	£9.79
EM-FJ-VBC50CR	50 mm	£13.46
EM-FJ-VBC63CR	63 mm	£17.13
EM-FJ-VBC80CR	80 mm	£25.28
EM-FJ-VBC100CR	100 mm	£34.29
EM-FJ-VBC125CR	125 mm	£36.09



3610

PISTON ROD FLOATING JOINT

PART NUMBER	CYLINDER BORE	THREAD	PRICE
EM-FJ-M10X1.25FD	32 mm	M10x1.25	£11.63
EM-FJ-M12X1.25FD	40 mm	M12x1.25	£14.71
EM-FJ-M16X1.5FD	50 mm / 63 mm	M16x1.5	£25.55
EM-FJ-M20X1.5FD	80 mm / 100 mm	M20x1.5	£33.31
EM-FJ-M27X2FD	125 mm	M27x2	£64.74



3610

FRONT OR REAR FLANGE

PART NUMBER	CYLINDER BORE	PRICE
EM-FJ-VBC32FA	32 mm	£9.44
EM-FJ-VBC40FA	40 mm	£11.00
EM-FJ-VBC50FA	50 mm	£15.72
EM-FJ-VBC63FA	63 mm	£18.88
EM-FJ-VBC80FA	80 mm	£28.32
EM-FJ-VBC100FA	100 mm	£37.76
EM-FJ-VBC125FA	125 mm	£46.62



3610

FEET (2 PIECES)

PART NUMBER	CYLINDER BORE	PRICE
EM-FJ-VBC32LB	32 mm	£3.75
EM-FJ-VBC40LB	40 mm	£5.62
EM-FJ-VBC50LB	50 mm	£7.45
EM-FJ-VBC63LB	63 mm	£11.20
EM-FJ-VBC80LB	80 mm	£13.07
EM-FJ-VBC100LB	100 mm	£14.94
EM-FJ-VBC125LB	125 mm	£27.98



**FVBC SERIES
MAGNETIC PROXIMITY SWITCH**

3610

PART NUMBER	DESCRIPTION	PRICE
EM-HX-31R	NPN 3 wire solid state reed switch Normally open (input) Operating voltage 5-30V DC Red LED indicator 1 mtr cable IP67 rated surge protection	£9.44
EM-HX-31N	NPN 3 wire solid state reed switch Normally open (input) Operating voltage 5-30V DC Red LED indicator 1 mtr cable IP67 rated surge protection	£26.99
EM-HX-31P	PNP 3 wire solid state reed switch Normally open (output) Operating voltage 5-30V DC Yellow LED indicator 1 mtr cable IP67 rated surge protection	£26.99

**CYLINDER SEAL KIT
SUITABLE FOR VBC & FVBC SERIES**

3610

PART NUMBER	BORE SIZE	PRICE
EM-VBC32-XLB	32 mm	£10.14
EM-VBC40-XLB	40 mm	£12.64
EM-VBC50-XLB	50 mm	£15.14
EM-VBC63-XLB	63 mm	£17.36
EM-VBC80-XLB	80 mm	£21.03
EM-VBC100-XLB	100 mm	£24.07
EM-VBC125-XLB	125 mm	£28.55

**HX-07 MAGNETIC PROXIMITY
SWITCH FOR USE WITH
SQ, SGM & EXH SERIES**



3610

PART NUMBER	DESCRIPTION	PRICE
EM-HX-07R	Standard 2 wire reed switch Normally open Operating voltage 5-120V DC/ AC Red LED indicator 1 mtr cable IP67 rated	£6.90
EM-HX-07N	NPN 3 wire solid state reed switch Normally open (input) Operating voltage 5-30V DV Red LED indicator 1 mtr cable IP67 rated surge protection	£21.27
EM-HX-07P	PNP 3 wire solid state reed switch Normally open (output) Operating voltage 5-30V DC Green LED indicator 1mtr cable IP67 rated surge protection	£21.27

**VBC SERIES
HX21 SWITCH CLAMP
ALUMINIUM ALLOY**



3610

PART NUMBER	BORE	PRICE
EM-PI-1	32/40 mm	£2.34
EM-PI-2	50/63 mm	£2.34
EM-PI-3	80 mm	£4.26
EM-PI-4	100 mm	£4.26
EM-PI-5	125 mm	£7.65

**VBC SERIES
MAGNETIC PROXIMITY SWITCH**



3610

PART NUMBER	DESCRIPTION	PRICE
EM-HX-21R	Standard 2 wire reed switch Normally open Operating voltage 5-240V DC/AC 1 mtr cable IP67 rated surge protection	£7.66
EM-HX-21N	NPN 3 wire solid state reed switch Normally open (input) Operating voltage 5-30V DC Red LED indicator 1 mtr cable IP67 rated surge protection	£25.83
EM-HX-21P	PNP 3 wire solid state reed switch Normally open (output) Operating voltage 5-30V DC Green LED indicator 1 mtr cable IP67 rated surge protection	£25.83

**HX-01 MAGNETIC PROXIMITY
SWITCH FOR USE WITH
SE SERIES**



3610

PART NUMBER	DESCRIPTION	PRICE
EM-HX-01R	Standard reed switch 2 wire Normally open Operating voltage 5-240V DC/ AC Red LED indicator 1 mtr flying lead IP67 rated	£8.39
EM-HX-01N	NPN 3 wire solid state reed switch Normally open (input) Operating voltage 5-30V DC Red LED indicator 1 mtr flying lead IP67 rated	£25.12
EM-HX-01P	PNP 3 wire solid state reed switch Normally open (output) Operating voltage 5-30V DC Green LED indicator 1 mtr flying lead IP67 rated surge protection	£25.12

SQ COMPACT SERIES

DESCRIPTION

SQ series compact pneumatic cylinder, bore size ranges from 12 – 100 mm, with grease and all dynamic seals imported. Stronger self-lubricating bronze bearings give high guiding performance and concentricity for the compact cylinder, while piston rod and rod connection is designed with rotary riveting structure, ensuring high concentricity, smooth running and low starting pressure.

The compact cylinder is designed with slots for magnetic switches in 3 sides, easier to mount. Rear cap and cylinder body are riveted together with superior assembling reliability, while front cap and barrel are connected by buckle for easier maintenance.

FEATURES

- All dynamic seals from Japan, with Germany grease, longer life
- Strong self-lubricating bronze bearings, high lateral loading performance
- Piston rod and rod connection is rotary riveted, high concentricity
- Rear cover and body are riveted together, reliable

SPECIFICATIONS

Cylinder type	Double acting, magnetic positioning
Max. working pressure	10 bar
Operating temperature	-20°C to +80°C (dry air)
Available bore size	ø12-100 mm
Available stroke length	0-100 mm
Cushion type	Anti-bump cushioning



SQ SERIES DIAMOND PROFILE CYLINDER
16 BORE

3620

PART NUMBER	BORE	STROKE	PRICE
EM-SQ16X30-S	16 mm	30 mm	£17.19

20 BORE

EM-SQ20X10-S	20 mm	10 mm	£15.14
EM-SQ20X15-S	20 mm	15 mm	£15.83
EM-SQ20X20-S	20 mm	20 mm	£16.51
EM-SQ20X25-S	20 mm	25 mm	£17.20
EM-SQ20X30-S	20 mm	30 mm	£17.89
EM-SQ20X40-S	20 mm	40 mm	£19.27
EM-SQ20X50-S	20 mm	50 mm	£20.65

25 BORE

EM-SQ25X10-S	25 mm	10 mm	£15.83
EM-SQ25X15-S	25 mm	15 mm	£16.51
EM-SQ25X20-S	25 mm	20 mm	£17.20
EM-SQ25X25-S	25 mm	25 mm	£17.89
EM-SQ25X30-S	25 mm	30 mm	£18.58
EM-SQ25X40-S	25 mm	40 mm	£19.96
EM-SQ25X50-S	25 mm	50 mm	£21.33



SQ SERIES SQUARE PROFILE CYLINDER
32 BORE

3620

PART NUMBER	BORE	STROKE	PRICE
EM-SQ32X10-S	32 mm	10 mm	£18.85
EM-SQ32X15-S	32 mm	15 mm	£19.74
EM-SQ32X20-S	32 mm	20 mm	£20.65
EM-SQ32X25-S	32 mm	25 mm	£21.54
EM-SQ32X30-S	32 mm	30 mm	£22.43
EM-SQ32X40-S	32 mm	40 mm	£24.22
EM-SQ32X50-S	32 mm	50 mm	£26.02

40 BORE

EM-SQ40X10-S	40 mm	10 mm	£22.92
EM-SQ40X15-S	40 mm	15 mm	£23.82
EM-SQ40X20-S	40 mm	20 mm	£24.71
EM-SQ40X25-S	40 mm	25 mm	£25.60
EM-SQ40X30-S	40 mm	30 mm	£26.51
EM-SQ40X40-S	40 mm	40 mm	£25.04
EM-SQ40X50-S	40 mm	50 mm	£30.08

50 BORE

EM-SQ50X10-S	50 mm	10 mm	£27.15
EM-SQ50X15-S	50 mm	15 mm	£28.36
EM-SQ50X20-S	50 mm	20 mm	£29.57
EM-SQ50X25-S	50 mm	25 mm	£30.77
EM-SQ50X30-S	50 mm	30 mm	£31.68
EM-SQ50X40-S	50 mm	40 mm	£34.09
EM-SQ50X50-S	50 mm	50 mm	£36.51

100 BORE

EM-SQ100X10-S	100 mm	10 mm	£85.07
---------------	--------	-------	--------

Available on request:
 - 80/100 mm bore
 - Single acting male threaded piston rods
 - Single acting cylinder with spring return / spring extend

Additional strokes available on all bore sizes

SF SERIES

DESCRIPTION

SF series ISO21287 standard compact pneumatic cylinder, bore size ranges from 20 – 100 mm. Stronger self-lubricating bronze bearings give high guiding performance and concentricity for the compact cylinder, while piston rod and rod connection is designed with rotary riveting structure, ensuring high concentricity, smooth running and low starting pressure.

The compact cylinder is designed with slots for magnetic switches in 4 sides, while various mountings are available. Rear cap and cylinder body are riveted together with superior assembling reliability, while front cap and barrel are connected by buckle for easier maintenance.

SPECIFICATIONS

Cylinder type	Double acting, magnetic positioning
Max. working pressure	10 bar
Operating temperature	-20°C to +80°C (dry air)
Available bore size	ø20 – 100 mm
Available stroke length	10 – 50 mm
Cushion type	Rubber

FEATURES / BENEFITS

ISO21287 standard cylinder
 Compact structure, 50% space saving compared to ISO15552 standard pneumatic cylinders
 Double-ended cushion gasket, provides smooth reversing, less impact and mechanical damage
 Rotary riveted piston rod and rod connection, offering high concentricity
 Riveted rear cover and body for reliability



New

SF SERIES

20 BORE

3620

PART NUMBER	BORE	STROKE	PRICE
EM-SF20X10-S	20 mm	10 mm	£17.70
EM-SF20X15-S	20 mm	15 mm	£18.24
EM-SF20X20-S	20 mm	20 mm	£18.75
EM-SF20X25-S	20 mm	25 mm	£19.29
EM-SF20X30-S	20 mm	30 mm	£19.83
EM-SF20X40-S	20 mm	40 mm	£20.88
EM-SF20X50-S	20 mm	50 mm	£21.93

25 BORE

EM-SF25X10-S	25 mm	10 mm	£20.58
EM-SF25X15-S	25 mm	15 mm	£21.18
EM-SF25X20-S	25 mm	20 mm	£21.81
EM-SF25X25-S	25 mm	25 mm	£22.41
EM-SF25X30-S	25 mm	30 mm	£23.01
EM-SF25X40-S	25 mm	40 mm	£24.24
EM-SF25X50-S	25 mm	50 mm	£25.44

32 BORE

EM-SF32X10-S	32 mm	10 mm	£22.17
EM-SF32X15-S	32 mm	15 mm	£22.71
EM-SF32X20-S	32 mm	20 mm	£23.22
EM-SF32X25-S	32 mm	25 mm	£23.76
EM-SF32X30-S	32 mm	30 mm	£24.27
EM-SF32X40-S	32 mm	40 mm	£25.32
EM-SF32X50-S	32 mm	50 mm	£26.40

New

40 BORE

PART NUMBER	BORE	STROKE	PRICE
EM-SF40X10-S	40 mm	10 mm	£23.58
EM-SF40X15-S	40 mm	15 mm	£24.18
EM-SF40X20-S	40 mm	20 mm	£24.78
EM-SF40X25-S	40 mm	25 mm	£25.41
EM-SF40X30-S	40 mm	30 mm	£26.01
EM-SF40X40-S	40 mm	40 mm	£27.24
EM-SF40X50-S	40 mm	50 mm	£28.44

50 BORE

EM-SF50X10-S	50 mm	10 mm	£28.41
EM-SF50X15-S	50 mm	15 mm	£29.16
EM-SF50X20-S	50 mm	20 mm	£29.91
EM-SF50X25-S	50 mm	25 mm	£30.66
EM-SF50X30-S	50 mm	30 mm	£31.41
EM-SF50X40-S	50 mm	40 mm	£32.88
EM-SF50X50-S	50 mm	50 mm	£34.38

63 BORE

EM-SF63X10-S	63 mm	10 mm	£35.34
EM-SF63X15-S	63 mm	15 mm	£36.30
EM-SF63X20-S	63 mm	20 mm	£37.23
EM-SF63X25-S	63 mm	25 mm	£38.16
EM-SF63X30-S	63 mm	30 mm	£39.12
EM-SF63X40-S	63 mm	40 mm	£41.01
EM-SF63X50-S	63 mm	50 mm	£42.87

EXS-M SERIES

DESCRIPTION

The EXS-M is a twin rod precision guided cylinder with a slide bearing. It features a double cylinder construction for increased force from a compact profile and good resistance to side loads. The cylinder has a number of mounting points. Adjustable return stroke cushion 0 – 5 mm.

SPECIFICATIONS

Cylinder type	Double acting, magnetic positioning
Max. working pressure	10 bar
Operating temperature	-20°C to +80°C (dry air)
Available bore sizes	ø6 – 32 mm
Available stroke length	25 – 200 mm
Cushion type	Cushioned both ends adjustable on return stroke 0 – 5mm



3660

**EXS SERIES
GUIDED CYLINDER**

10 BORE

PART NUMBER	BORE	STROKE	PRICE
EM-EXSM10X25-S	10 mm	25 mm	£107.94
EM-EXSM10X50-S	10 mm	50 mm	£118.54
EM-EXSM10X75-S	10 mm	75 mm	£138.91

16 BORE

EM-EXSM16X25-S	16 mm	25 mm	£114.05
EM-EXSM16X50-S	16 mm	50 mm	£125.47
EM-EXSM16X75-S	16 mm	75 mm	£147.04

20 BORE

EM-EXSM20X10-S	20 mm	10 mm	£118.94
EM-EXSM20X25-S	20 mm	25 mm	£132.38
EM-EXSM20X50-S	20 mm	50 mm	£153.58
EM-EXSM20X75-S	20 mm	75 mm	£169.86

25 BORE

EM-EXSM25X25-S	25 mm	25 mm	£140.93
EM-EXSM25X50-S	25 mm	50 mm	£161.31
EM-EXSM25X75-S	25 mm	75 mm	£183.30

32 BORE

EM-EXSM32X25-S	32 mm	25 mm	£180.86
EM-EXSM32X50-S	32 mm	50 mm	£213.03
EM-EXSM32X75-S	32 mm	75 mm	£237.90

Alternative stroke sizes available upon request

SGM SERIES

DESCRIPTION

The SGM cylinder is a triple rod, heavy duty, guided cylinder with a slide bearing. The construction offers a strong resistance to side load forces and has a number of mounting points for convenient installation.

SPECIFICATIONS

Cylinder type	Double acting, magnetic positioning
Max. working pressure	10 bar
Operating temperature	-20°C to +80°C (dry air)
Available bore sizes	ø12 – 63 mm
Available stroke sizes	25 – 250 mm
Cushion type	Rubber cushioned



3660

**SGM SERIES TRIPLE ROD
GUIDED CYLINDER**

12 BORE

PART NUMBER	BORE	STROKE	PRICE
EM-SGM12X25-S	12 mm	25 mm	£103.91
EM-SGM12X50-S	12 mm	50 mm	£117.96
EM-SGM12X75-S	12 mm	75 mm	£125.58

16 BORE

EM-SGM16X25-S	16 mm	25 mm	£108.57
EM-SGM16X50-S	16 mm	50 mm	£122.61
EM-SGM16X75-S	16 mm	75 mm	£130.24

20 BORE

EM-SGM20X25-S	20 mm	25 mm	£121.92
EM-SGM20X50-S	20 mm	50 mm	£137.67
EM-SGM20X75-S	20 mm	75 mm	£146.22

25 BORE

EM-SGM25X25-S	25 mm	25 mm	£145.89
EM-SGM25X50-S	25 mm	50 mm	£162.67
EM-SGM25X75-S	25 mm	75 mm	£171.93

32 BORE

EM-SGM32X25-S	32 mm	25 mm	£194.51
EM-SGM32X50-S	32 mm	50 mm	£210.94
EM-SGM32X75-S	32 mm	75 mm	£243.14

40 BORE

EM-SGM40X25-S	40 mm	25 mm	£208.21
EM-SGM40X50-S	40 mm	50 mm	£225.68
EM-SGM40X75-S	40 mm	75 mm	£256.84

50 BORE

EM-SGM50X25-S	50 mm	25 mm	£236.98
EM-SGM50X50-S	50 mm	50 mm	£257.52
EM-SGM50X75-S	50 mm	75 mm	£291.78

63 BORE

EM-SGM63X25-S	63 mm	25 mm	£273.97
EM-SGM63X50-S	63 mm	50 mm	£298.62
EM-SGM63X75-S	63 mm	75 mm	£344.16

RV SERIES

SPECIFICATIONS

Working medium	Clean air
Working pressure	1.5 – 8 bar
Guaranteed pressure	12 bar
Working temperature	-20°C to +70°C (dry air)
Valve type	3/2, 5/2 and 5/3
Acting type	Internal pilot / external pilot type

New

RV SERIES PILOT VALVE
3/2 SINGLE PILOT
NORMALLY CLOSED
SPRING RETURN



3630

PART NUMBER	FUNCTION	BODY SIZE	PORT SIZE	PRICE
EM-RVA3211-06Q	3/2	18 mm	1/8"	£33.85
EM-RVA3221-08Q	3/2	22 mm	1/4"	£32.17
EM-RVA3231-10	3/2	27 mm	3/8"	£39.53
EM-RVA3241-15	3/2	22 mm	1/2"	£63.49

* Air return available for products ending in Q

New

RV SERIES PILOT VALVE
5/3 DOUBLE PILOT
CENTRE CLOSED



3630

PART NUMBER	FUNCTION	BODY SIZE	PORT SIZE	PRICE
EM-RVA5312C-06	5/3	18 mm	1/8"	£73.26
EM-RVA5322C-08	5/3	22 mm	1/4"	£61.19
EM-RVA5332C-10	5/3	27 mm	3/8"	£88.40
EM-RVA5342C-15	5/3	34 mm	1/2"	£102.03

New

RV SERIES PILOT VALVE
3/2 DOUBLE PILOT
NORMALLY CLOSED



3630

PART NUMBER	FUNCTION	BODY SIZE	PORT SIZE	PRICE
EM-RVA3212-06Q	3/2	18 mm	1/8"	£45.45
EM-RVA3222-08Q	3/2	22 mm	1/4"	£46.78
EM-RVA3232-10	3/2	27 mm	3/8"	£55.51
EM-RVA3242-15	3/2	34 mm	1/2"	£84.57

* Air return available for products ending in Q

New

RV SERIES PILOT VALVE
5/3 DOUBLE PILOT
PRESSURED CENTRE



3630

PART NUMBER	FUNCTION	BODY SIZE	PORT SIZE	PRICE
EM-RVA5312P-06	5/3	18 mm	1/8"	£73.26
EM-RVA5322P-08	5/3	22 mm	1/4"	£61.19
EM-RVA5332P-10	5/3	27 mm	3/8"	£88.40
EM-RVA5342P-15	5/3	34 mm	1/2"	£102.03

New

RV SERIES PILOT VALVE
5/2 SINGLE PILOT
SPRING RETURN



3630

PART NUMBER	FUNCTION	BODY SIZE	PORT SIZE	PRICE
EM-RVA5211-06Q	5/2	18 mm	1/8"	£32.28
EM-RVA5221-08Q	5/2	22 mm	1/4"	£30.69
EM-RVA5231-10	5/2	27 mm	3/8"	£37.62
EM-RVA5241-15	5/2	34 mm	1/2"	£60.44

* Air return available for products ending in Q

New

RV SERIES PILOT VALVE
5/3 DOUBLE PILOT
CENTRE EXHAUST



3630

PART NUMBER	FUNCTION	BODY SIZE	PORT SIZE	PRICE
EM-RVA5312E-06	5/3	18 mm	1/8"	£73.26
EM-RVA5322E-08	5/3	22 mm	1/4"	£61.19
EM-RVA5332E-10	5/3	27 mm	3/8"	£88.40
EM-RVA5342E-15	5/3	34 mm	1/2"	£102.03

New

RV SERIES PILOT VALVE
5/2 DOUBLE PILOT



3630

PART NUMBER	FUNCTION	BODY SIZE	PORT SIZE	PRICE
EM-RVA5212-06	5/2	18 mm	1/8"	£45.45
EM-RVA5222-08	5/2	22 mm	1/4"	£44.58
EM-RVA5232-10	5/2	27 mm	3/8"	£52.87
EM-RVA5242-15	5/2	34 mm	1/2"	£86.40

RV SERIES

SPECIFICATIONS

Working medium	Clean air
Working pressure	1.5 – 8 bar
Guaranteed pressure	12 bar
Working temperature	-20°C to +70°C (dry air)
Valve type	3/2, 5/2 and 5/3
Acting type	Pilot type

New

RV SERIES 3/2 SINGLE SOLENOID NORMALLY CLOSED SPRING RETURN



3640

PART NUMBER	FUNCTION	BODY SIZE	PORT SIZE	VOLTAGE	PRICE
EM-RV3211-06Q-E4	3/2	18 mm	1/8"	24 V DC	£45.63
EM-RV3211-06Q-E1	3/2	18 mm	1/8"	110 V AC	£45.63
EM-RV3211-06Q-E2	3/2	18 mm	1/8"	220 V AC	£45.63
EM-RV3221-08Q-E4	3/2	22 mm	1/4"	24 V DC	£39.26
EM-RV3221-08Q-E1	3/2	22 mm	1/4"	110 V AC	£39.26
EM-RV3221-08Q-E2	3/2	22 mm	1/4"	220 V AC	£39.26
EM-RV3241-15-E4	3/2	34 mm	1/2"	24 V DC	£91.08
EM-RV3241-15-E1	3/2	34 mm	1/2"	110 V AC	£91.08
EM-RV3241-15-E2	3/2	34 mm	1/2"	220 V AC	£91.08

New

RV SERIES 3/2 DOUBLE SOLENOID NORMALLY CLOSED



3640

PART NUMBER	FUNCTION	BODY SIZE	PORT SIZE	VOLTAGE	PRICE
EM-RV3212-06-E4	3/2	18 mm	1/8"	24 V DC	£75.31
EM-RV3212-06-E1	3/2	18 mm	1/8"	110 V AC	£75.31
EM-RV3212-06-E2	3/2	18 mm	1/8"	220 V AC	£75.31
EM-RV3222-08-E4	3/2	22 mm	1/4"	24 V DC	£68.87
EM-RV3222-08-E1	3/2	22 mm	1/4"	110 V AC	£68.87
EM-RV3222-08-E2	3/2	22 mm	1/4"	220 V AC	£68.87
EM-RV3242-15-E4	3/2	34 mm	1/2"	24 V DC	£131.06
EM-RV3242-15-E1	3/2	34 mm	1/2"	110 V AC	£131.06
EM-RV3242-15-E2	3/2	34 mm	1/2"	220 V AC	£131.06

New

RV SERIES 5/2 SINGLE SOLENOID SPRING RETURN



3640

PART NUMBER	FUNCTION	BODY SIZE	PORT SIZE	VOLTAGE	PRICE
EM-RV5211-06Q-E4	5/2	18 mm	1/8"	24 V DC	£42.92
EM-RV5211-06Q-E1	5/2	18 mm	1/8"	110 V AC	£42.92
EM-RV5211-06Q-E2	5/2	18 mm	1/8"	220 V AC	£42.92
EM-RV5221-08Q-E4	5/2	22 mm	1/4"	24 V DC	£36.90
EM-RV5221-08Q-E1	5/2	22 mm	1/4"	110 V AC	£36.90
EM-RV5221-08Q-E2	5/2	22 mm	1/4"	220 V AC	£36.90
EM-RV5241-15-E4	5/2	34 mm	1/2"	24 V DC	£91.08
EM-RV5241-15-E1	5/2	34 mm	1/2"	110 V AC	£91.08
EM-RV5241-15-E2	5/2	34 mm	1/2"	220 V AC	£91.08

New

RV SERIES 5/2 DOUBLE SOLENOID



3640

PART NUMBER	FUNCTION	BODY SIZE	PORT SIZE	VOLTAGE	PRICE
EM-RV5212-06-E4	5/2	18 mm	1/8"	24 V DC	£75.31
EM-RV5212-06-E1	5/2	18 mm	1/8"	110 V AC	£75.31
EM-RV5212-06-E2	5/2	18 mm	1/8"	220 V AC	£75.31
EM-RV5222-08-E4	5/2	22 mm	1/4"	24 V DC	£68.87
EM-RV5222-08-E1	5/2	22 mm	1/4"	110 V AC	£68.87
EM-RV5222-08-E2	5/2	22 mm	1/4"	220 V AC	£68.87
EM-RV5242-15-E4	5/2	34 mm	1/2"	24 V DC	£131.06
EM-RV5242-15-E1	5/2	34 mm	1/2"	110 V AC	£131.06
EM-RV5242-15-E2	5/2	34 mm	1/2"	220 V AC	£131.06

New

RV SERIES 5/3 DOUBLE SOLENOID CENTRE CLOSED



3640

PART NUMBER	FUNCTION	BODY SIZE	PORT SIZE	VOLTAGE	PRICE
EM-RV5312C-06-E4	5/3	18 mm	1/8"	24 V DC	£104.04
EM-RV5312C-06-E1	5/3	18 mm	1/8"	110 V AC	£104.04
EM-RV5312C-06-E2	5/3	18 mm	1/8"	220 V AC	£104.04
EM-RV5322C-08-E4	5/3	22 mm	1/4"	24 V DC	£100.23
EM-RV5322C-08-E1	5/3	22 mm	1/4"	110 V AC	£100.23
EM-RV5322C-08-E2	5/3	22 mm	1/4"	220 V AC	£100.23
EM-RV5342C-15-E4	5/3	34 mm	1/2"	24 V DC	£166.96
EM-RV5342C-15-E1	5/3	34 mm	1/2"	110 V AC	£166.96
EM-RV5342C-15-E2	5/3	34 mm	1/2"	220 V AC	£166.96

New

RV SERIES 5/3 DOUBLE SOLENOID PRESSURED CENTRES



3640

PART NUMBER	FUNCTION	BODY SIZE	PORT SIZE	VOLTAGE	PRICE
EM-RV5312P-06-E4	5/3	18 mm	1/8"	24 V DC	£107.64
EM-RV5312P-06-E1	5/3	18 mm	1/8"	110 V AC	£107.64
EM-RV5312P-06-E2	5/3	18 mm	1/8"	220 V AC	£107.64
EM-RV5322P-08-E4	5/3	22 mm	1/4"	24 V DC	£100.23
EM-RV5322P-08-E1	5/3	22 mm	1/4"	110 V AC	£100.23
EM-RV5322P-08-E2	5/3	22 mm	1/4"	220 V AC	£100.23
EM-RV5342P-15-E4	5/3	34 mm	1/2"	24 V DC	£166.96
EM-RV5342P-15-E1	5/3	34 mm	1/2"	110 V AC	£166.96
EM-RV5342P-15-E2	5/3	34 mm	1/2"	220 V AC	£166.96

New

RV SERIES 5/3 DOUBLE SOLENOID CENTRE EXHAUST



3640

PART NUMBER	FUNCTION	BODY SIZE	PORT SIZE	VOLTAGE	PRICE
EM-RV5312E-06-E4	5/3	18 mm	1/8"	24 V DC	£107.64
EM-RV5312E-06-E1	5/3	18 mm	1/8"	110 V AC	£107.64
EM-RV5312E-06-E2	5/3	18 mm	1/8"	220 V AC	£107.64
EM-RV5322E-08-E4	5/3	22 mm	1/4"	24 V DC	£100.23
EM-RV5322E-08-E1	5/3	22 mm	1/4"	110 V AC	£100.23
EM-RV5322E-08-E2	5/3	22 mm	1/4"	220 V AC	£100.23
EM-RV5342E-15-E4	5/3	34 mm	1/2"	24 V DC	£166.96
EM-RV5342E-15-E1	5/3	34 mm	1/2"	110 V AC	£166.96
EM-RV5342E-15-E2	5/3	34 mm	1/2"	220 V AC	£166.96

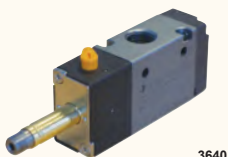
RV SERIES – BODY ONLY

SPECIFICATIONS

Working medium	Clean air
Working pressure	1.5 – 8 bar
Guaranteed pressure	12 bar
Working temperature	-20°C to +70°C (dry air)
Valve type	3/2, 5/2 and 5/3
Acting type	Pilot type

New

RV SERIES 3/2 SINGLE SOLENOID NORMALLY CLOSED



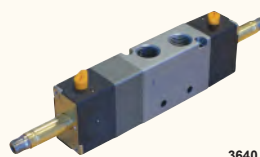
3640

PART NUMBER	FUNCTION	BODY SIZE	PORT SIZE	PRICE
EM-RV3211-06Q-WX	3/2	18 mm	1/8"	£40.23
EM-RV3221-08Q-WX	3/2	22 mm	1/4"	£33.83
EM-RV3241-15-WX	3/2	34 mm	1/2"	£85.65

* Air return available for products ending in Q

New

RV SERIES 5/3 DOUBLE SOLENOID CENTRE CLOSED



3640

PART NUMBER	FUNCTION	BODY SIZE	PORT SIZE	PRICE
EM-RV5312C-06-WX	5/3	18 mm	1/8"	£98.61
EM-RV5322C-08-WX	5/3	22 mm	1/4"	£94.80
EM-RV5342C-15-WX	5/3	34 mm	1/2"	£161.53

New

RV SERIES 3/2 DOUBLE SOLENOID NORMALLY CLOSED



3640

PART NUMBER	FUNCTION	BODY SIZE	PORT SIZE	PRICE
EM-RV3212-06-WX	3/2	18 mm	1/8"	£69.88
EM-RV3222-08-WX	3/2	22 mm	1/4"	£63.44
EM-RV3242-15-WX	3/2	34 mm	1/2"	£125.63

New

RV SERIES 5/3 DOUBLE SOLENOID PRESSURE HELD



3640

PART NUMBER	FUNCTION	BODY SIZE	PORT SIZE	PRICE
EM-RV5312P-06-WX	5/3	18 mm	1/8"	£102.21
EM-RV5322P-08-WX	5/3	22 mm	1/4"	£94.80
EM-RV5342P-15-WX	5/3	34 mm	1/2"	£161.53

New

RV SERIES 5/2 SINGLE SOLENOID



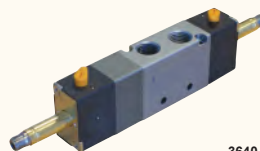
3640

PART NUMBER	FUNCTION	BODY SIZE	PORT SIZE	PRICE
EM-RV5211-06Q-WX	5/2	18 mm	1/8"	£40.23
EM-RV5221-08Q-WX	5/2	22 mm	1/4"	£33.83
EM-RV5241-15-WX	5/2	34 mm	1/2"	£85.65

* Air return available for products ending in Q

New

RV SERIES 5/3 DOUBLE SOLENOID PRESSURE EXHAUST

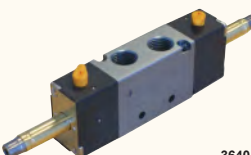


3640

PART NUMBER	FUNCTION	BODY SIZE	PORT SIZE	PRICE
EM-RV5312E-06-WX	5/3	18 mm	1/8"	£102.21
EM-RV5322E-08-WX	5/3	22 mm	1/4"	£94.80
EM-RV5342E-15-WX	5/3	34 mm	1/2"	£161.53

New

RV SERIES 5/2 DOUBLE SOLENOID



3640

PART NUMBER	FUNCTION	BODY SIZE	PORT SIZE	PRICE
EM-RV5212-06-WX	5/2	18 mm	1/8"	£69.88
EM-RV5222-08-WX	5/2	22 mm	1/4"	£63.44
EM-RV5242-15-WX	5/2	34 mm	1/2"	£125.63

VP SERIES SOLENOID VALVES

VP SERIES (3/2) SINGLE SOLENOID - 24V DC



3640

PART NUMBER	FUNCTION	VALVE BODY	PORT SIZE	PRICE
EM-VP321-06E4	3/2	1/8"	1/8"	£30.08

RV SERIES ACCESSORIES

New



RV SERIES COIL
FOR USE WITH 1/8" VALVES

3640

PART NUMBER	TYPE	VOLTAGE	PRICE
EM-XHD-V1-E1	B	110 / 50 V AC & 22	£7.39
EM-XHD-V1-E2	B	220 / 50 V AC	£7.39
EM-XHD-V1-E7	B	24 / 50 V AC	£7.39
EM-XHD-V1-E4	B	24 V DC	£7.39
EM-XHD-V1-E5	B	12 V DC	£7.39

FOR USE WITH 1/4" & 1/2" VALVES

EM-XHD-V2-E1	C	110 / 50 V AC	£7.08
EM-XHD-V2-E2	C	220 / 50 V AC	£7.08
EM-XHD-V2-E7	C	24 / 50 V AC	£7.08
EM-XHD-V2-E4	C	24 V DC	£7.08
EM-XHD-V2-E5	C	12 V DC	£7.08



RV SERIES PLUG CONNECTOR

TYPE B

3640

PART NUMBER	VOLTAGE	PRICE
EM-DB-A2ELR	110 / 50 V AC & 220 / 50 V AC	£2.97
EM-DB-A1ELR	24 V AC	£2.97
EM-DB-D1ELR	12 V DC / 24 V DC	£2.97

TYPE C

EM-DC-A2TEL	110 / 50 V AC & 220 / 50 V AC	£2.20
EM-DC-A1TEL	24 V AC	£2.20
EM-DC-D1TEL	12 V DC / 24 V DC	£2.20



BLANKING PLATES

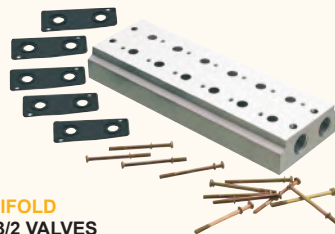
3 WAY

3640

PART NUMBER	BODY SIZE	PORT SIZE	PRICE
EM-VBP321	18 mm	1/8"	£2.44
EM-VBP322	22 mm	1/4"	£2.44
EM-VBP324	34 mm	1/2"	£2.57

5 WAY

EM-VBP521	18 mm	1/8"	£2.44
EM-VBP522	22 mm	1/4"	£2.44
EM-VBP524	34 mm	1/2"	£2.75



RV SERIES MANIFOLD
FOR USE WITH 3/2 VALVES

3640

PART NUMBER	NO. OF VALVES	BODY SIZE	PORT SIZE	PRICE
EM-V321-2F	2	18 mm	1/8"	£12.33
EM-V321-4F	4	18 mm	1/8"	£22.15
EM-V321-6F	6	18 mm	1/8"	£31.97
EM-V321-8F	8	18 mm	1/8"	£41.79
EM-V321-10F	10	18 mm	1/8"	£51.85
EM-V322-2F	2	22 mm	1/4"	£12.33
EM-V322-4F	4	22 mm	1/4"	£22.21
EM-V322-6F	6	22 mm	1/4"	£32.09
EM-V322-8F	8	22 mm	1/4"	£41.97
EM-V322-10F	10	22 mm	1/4"	£51.79
EM-V324-2F	2	34 mm	3/4"	£40.14
EM-V324-4F	4	34 mm	1/2"	£73.08
EM-V324-6F	6	34 mm	1/2"	£106.02
EM-V324-8F	8	34 mm	1/2"	£138.96
EM-V324-10F	10	34 mm	1/2"	£171.90

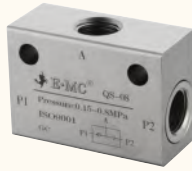
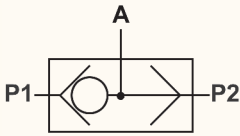
FOR USE WITH 5/2 & 5/3 VALVES

EM-V521-2F	2	18 mm	1/8"	£12.33
EM-V521-4F	4	18 mm	1/8"	£22.21
EM-V521-6F	6	18 mm	1/8"	£32.09
EM-V521-8F	8	18 mm	1/8"	£41.97
EM-V521-10F	10	18 mm	1/8"	£51.85
EM-V522-2F	2	22 mm	1/4"	£11.29
EM-V522-4F	4	22 mm	1/4"	£20.32
EM-V522-6F	6	22 mm	1/4"	£29.35
EM-V522-8F	8	22 mm	1/4"	£38.37
EM-V522-10F	10	22 mm	1/4"	£47.40
EM-V524-2F	2	34 mm	1/2"	£35.20
EM-V524-4F	4	34 mm	1/2"	£63.38
EM-V524-6F	6	34 mm	1/2"	£91.57
EM-V524-8F	8	34 mm	1/2"	£119.75
EM-V524-10F	10	34 mm	1/2"	£147.93

Six

SPECIFICATIONS

Control type	Pneumatic
Working pressure	0.5 – 12 bar
Working temperature	-5°C to +60°C



3630

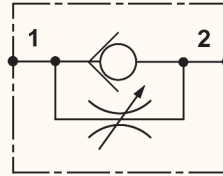
SHUTTLE VALVE (OR GATE)

PART NUMBER	PORT SIZE	PRICE
EM-QS-06	1/8"	£17.29
EM-QS-08	1/4"	£17.29

FLOW REGULATORS

SPECIFICATIONS

Working medium	Clean air
Working pressure	0.5 – 10 bar
Guaranteed pressure	15 bar
Working temperature	-20°C to +70°C



3630

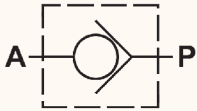
New

**FLOW REGULATOR
UNI DIRECTIONAL**

PART NUMBER	PORT SIZE	PRICE
EM-QSC-06	1/8"	£13.92
EM-QSC-08	1/4"	£17.69
EM-QSC-10	3/8"	£22.57
EM-QSC-15	1/2"	£22.57

SPECIFICATIONS

Control type	External control
Working pressure	0.5 – 8 bar
Working temperature	0°C to +55°C



3630

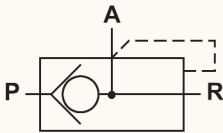
IN-LINE NON-RETURN VALVE

PART NUMBER	PORT SIZE	PRICE
EM-EA-06	1/8"	£12.36
EM-EA-08	1/4"	£12.36
EM-EA-10	3/8"	£22.39
EM-EA-15	1/2"	£22.39

AUTOMATIC VALVES

SPECIFICATIONS

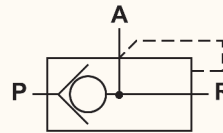
Working pressure	1.5 – 10 bar
Working temperature	-5°C to +60°C



3630

QUICK EXHAUST VALVE

PART NUMBER	PORT SIZE	PRICE
EM-KKP-06	1/8"	£21.41
EM-KKP-08	1/4"	£22.51
EM-KKP-10	3/8"	£26.80
EM-KKP-15	1/2"	£33.18



3630

QUICK EXHAUST VALVE

PART NUMBER	PORT SIZE	PRICE
EM-KKP-20	3/4"	£94.25
EM-KKP-25	1"	£94.25

H SERIES – MANUAL

SPECIFICATIONS

Working medium	Clean air
Working pressure	0 – 8 bar
Guaranteed pressure	12 bar
Working temperature	-5°C to +60°C
Valve type	3/2, 5/2 and 5/3
Seal material	NBR
Acting type	Manual

New

3/2 LEVER / SPRING
SPRING RETURN



3630

PART NUMBER	FUNCTION	PORT SIZE	PRICE
EM-H321-06S	3/2	1/8"	£37.64
EM-H322-08S	3/2	1/4"	£37.64
EM-H323-10S	3/2	3/8"	£44.79
EM-H324-15S	3/2	1/2"	£54.71

5/3 LEVER / SPRING / LEVER
SPRING TO CENTRE – CENTRES CLOSED



3640

PART NUMBER	FUNCTION	PORT SIZE	PRICE
EM-H531C-06S	5/3	1/8"	£61.43
EM-H532C-08S	5/3	1/4"	£61.43
EM-H533C-10S	5/3	3/8"	£70.34
EM-H534C-15S	5/3	1/2"	£84.37

3/2 LEVER / LEVER
DETENTED



3630

PART NUMBER	FUNCTION	PORT SIZE	PRICE
EM-H321-06	3/2	1/8"	£28.95
EM-H322-08	3/2	1/4"	£28.95
EM-H323-10	3/2	3/8"	£34.46
EM-H324-15	3/2	1/2"	£42.05

5/3 LEVER / SPRING / LEVER
SPRING TO CENTRE – CENTRES EXHAUST



3630

PART NUMBER	FUNCTION	PORT SIZE	PRICE
EM-H531E-06S	5/3	1/8"	£58.41
EM-H532E-08S	5/3	1/4"	£58.41
EM-H533E-10S	5/3	3/8"	£66.88
EM-H534E-15S	5/3	1/2"	£80.22

5/2 LEVER / SPRING
SPRING RETURN



3630

PART NUMBER	FUNCTION	PORT SIZE	PRICE
EM-H521-06S	5/2	1/8"	£33.30
EM-H522-08S	5/2	1/4"	£33.30
EM-H523-10S	5/2	3/8"	£48.72
EM-H524-15S	5/2	1/2"	£55.68

5/3 LEVER / SPRING / LEVER
MANUAL – PRESSURED CENTRES



3630

PART NUMBER	FUNCTION	PORT SIZE	PRICE
EM-H531P-06S	5/3	1/8"	£58.41
EM-H532P-08S	5/3	1/4"	£58.41
EM-H533P-10S	5/3	3/8"	£66.88
EM-H534P-15S	5/3	1/2"	£80.22

5/2 LEVER / LEVER
DETENTED



3630

PART NUMBER	FUNCTION	PORT SIZE	PRICE
EM-H521-06	5/2	1/8"	£28.95
EM-H522-08	5/2	1/4"	£25.00
EM-H523-10	5/2	3/8"	£28.54
EM-H524-15	5/2	1/2"	£48.61

5/3 LEVER / LEVER / LEVER
DETENTED – CENTRES CLOSED



3630

PART NUMBER	FUNCTION	PORT SIZE	PRICE
EM-H531C-06	5/3	1/8"	£44.95
EM-H532C-08	5/3	1/4"	£44.95
EM-H533C-10	5/3	3/8"	£51.45
EM-H534C-15	5/3	1/2"	£61.72

H SERIES – MECHANICAL

SPECIFICATIONS

Working medium	Clean air
Working pressure	0 – 8 bar
Guaranteed pressure	12 bar
Working temperature	-5°C to +60°C
Valve type	5/3
Seal material	NBR
Acting type	External control



3630

5/3 LEVER / LEVER / LEVER MANUAL – CENTRES EXHAUST

PART NUMBER	FUNCTION	PORT SIZE	PRICE
EM-H531E-06	5/3	1/8"	£44.95
EM-H532E-08	5/3	1/4"	£44.95
EM-H533E-10	5/3	3/8"	£51.45
EM-H534E-15	5/3	1/2"	£61.72



3630

5/3 LEVER / LEVER / LEVER MANUAL – PRESSURED CENTRES

PART NUMBER	FUNCTION	PORT SIZE	PRICE
EM-H531P-06	5/3	1/8"	£44.95
EM-H532P-08	5/3	1/4"	£44.95
EM-H533P-10	5/3	3/8"	£51.45
EM-H534P-15	5/3	1/2"	£61.72



3630

4/3 ROTARY LEVER VALVE

PART NUMBER	FUNCTION	PORT SIZE	PRICE
EM-R432-08	4/3	1/4" BSPP	£27.96
EM-R432-10	4/3	3/8" BSPP	£27.96
EM-R432-15	4/3	1/2" BSPP	£27.96

SPECIFICATIONS

Control type	Manual
Working pressure	0 – 8 bar
Working temperature	-5°C to +60°C



3630

FOOT VALVE

PART NUMBER	FUNCTION	DESCRIPTION	PORT SIZE	PRICE
EM-F322-08	3/2	Foot valve no cover	1/4"	£31.50
EM-F422-08	4/2	Foot valve no cover	1/4"	£33.76
EM-F522C-08L	5/2	Foot pedal with lock and cover	1/4"	£58.24

L SERIES – MANUAL

SPECIFICATIONS

Working medium	Clean air
Working pressure	0 – 8 bar
Guaranteed pressure	12 bar
Working temperature	-5°C to +60°C
Valve type	3/2 and 5/2
Acting type	Manual



3630

3/2 & 5/2 BUTTON VALVE DETENTED

PART NUMBER	FUNCTION	PORT SIZE	PRICE
EM-L321-06	3/2	1/8"	£25.00
EM-L322-08	3/2	1/4"	£23.84
EM-L323-10	3/2	3/8"	£30.98
EM-L324-15	3/2	1/2"	£39.21
EM-L521-06	5/2	1/8"	£26.16
EM-L522-08	5/2	1/4"	£26.16
EM-L523-10	5/2	3/8"	£31.79
EM-L524-15	5/2	1/2"	£43.45

SPECIFICATIONS

Working medium	Clean air
Working pressure	0-8 bar
Guaranteed pressure	12 bar
Working temperature	-5°C to +60°C
Valve type	3/2 and 5/2
Acting type	External control



3630

3/2 & 5/2 HAND PULL VALVE BUTTON SPRING

PART NUMBER	FUNCTION	PORT SIZE	PRICE
EM-L321-06S	3/2	1/8"	£32.48
EM-L322-08S	3/2	1/4"	£30.98
EM-L323-10S	3/2	3/8"	£40.26
EM-L324-15S	3/2	1/2"	£50.99
EM-L521-06S	5/2	1/8"	£33.99
EM-L522-08S	5/2	1/4"	£33.99
EM-L523-10S	5/2	3/8"	£41.30
EM-L524-15S	5/2	1/2"	£56.50

SPECIFICATION

Working pressure	0 – 8 bar
Guaranteed pressure	12 bar
Working temperature	-5°C to +60°C
Valve type	MV series: 3/2 M series: 5/2
Acting type	External control
Panel cut out size	Ø 22.5 mm

Alternative button colours available upon request. Lead times to be advised.



3630



3630

PUSH BUTTON SPRING RETURN VALVE FLAT BUTTON

PART NUMBER	FUNCTION	PORT SIZE	PRICE
EM-MV32-06S5R	3/2	1/8"	£16.07
EM-M32-08S5R	3/2	1/4"	£22.33
EM-M52-08S5R	5/2	1/4"	£24.99

3/2 ROLLER LEVER VALVE

PART NUMBER	FUNCTION	PORT SIZE	PRICE
EM-MV32-06S2	3/2	1/8"	£16.07
EM-MJ32-08S2	3/2	1/4"	£22.33
EM-M52-08S2	5/2	1/4"	£24.99



3630



3630

PUSH BUTTON SPRING RETURN VALVE RAISED BUTTON

PART NUMBER	FUNCTION	PORT SIZE	PRICE
EM-MV32-06S4G	3/2	1/8"	£16.07
EM-M32-08S4G	3/2	1/4"	£22.33
EM-M52-08S4G	5/2	1/4"	£24.99

TWO POSITION SELECTOR SWITCH VALVE WITH INDICATING ARROW

PART NUMBER	FUNCTION	PORT SIZE	PRICE
EM-MV32-06S1	3/2	1/8"	£16.07
EM-M32-08S1	3/2	1/4"	£22.33
EM-M52-08S1B	5/2	1/4"	£24.99



3630



BASIC (NO BUTTON) VALVES

SPRING RETURN

3630

PALM BUTTON SPRING RETURN VALVE

PART NUMBER	FUNCTION	PORT SIZE	PRICE
EM-MV32-06S6R	3/2	1/8"	£16.07
EM-M32-08S6R	3/2	1/4"	£22.33
EM-M52-08S6R	5/2	1/4"	£24.99

PART NUMBER	FUNCTION	PORT SIZE	PRICE
EM-MV322-06S7	3/2	1/8"	£14.27
EM-M32-08S7	3/2	1/4"	£20.54
EM-M52-08S7	5/2	1/4"	£23.20



3630

TWIST LOCK PALM SWITCH VALVE

PART NUMBER	FUNCTION	PORT SIZE	PRICE
EM-MV32-06S3R	3/2	1/8"	£16.07
EM-M32-08S3R	3/2	1/4"	£22.33
EM-M52-08S3R	5/2	1/4"	£24.99

MANUAL OPERATING HEADS

New

PUSH BUTTON SHROUDED
S5 VALVE HEAD



PART NUMBER	TO SUIT	PRICE
EM-M32-06S5R-P01	M32, M52 & MV34 valves	£7.49

New

PALM TWIST UNLOCK
S3 VALVE HEAD



PART NUMBER	TO SUIT	PRICE
EM-M32-06S3R-P01	M32, M52 & MV32 valves	£7.49

New

PUSH BUTTON RAISED
S4 VALVE HEAD



PART NUMBER	TO SUIT	PRICE
EM-M32-06S4G-P01	M32, M52 & MV33 valves	£7.49

New

TWO POSITION SELECTOR
S1 BLACK VALVE HEAD



PART NUMBER	TO SUIT	PRICE
EM-M32-06S1B-P01	M32, M52 & MV32 valves	£6.62

New

PALM SPRING RETURN
S6 VALVE HEAD



PART NUMBER	TO SUIT	PRICE
EM-M32-06S6R-P01	M32, M52 & MV35 valves	£7.49

Six

VACUUM PRODUCTS

E-ZH SERIES VACUUM EJECTORS

E-ZH SERIES
VACUUM EJECTOR
PUSH IN – WITH MUFFLER



PART NUMBER	TUBE SIZE	VACUUM (KPA)	PORT IN	VACUUM PORT	PRICE
EM-ZH05BL-06-06	0.5 mm	-48	6 mm	6 mm	£29.01
EM-ZH07BL-06-06	0.5 mm	-88	6 mm	6 mm	£29.01
EM-ZH07BL-06-06	0.7 mm	-48	6 mm	6 mm	£29.01
EM-ZH07BS-06-06	0.7 mm	-88	6 mm	6 mm	£29.01
EM-ZH10BL-06-06	1.0 mm	-48	6 mm	6 mm	£29.01
EM-ZH10BS-06-06	1.0 mm	-88	6 mm	6 mm	£29.01
EM-ZH13BL-08-10	1.3 mm	-48	8 mm	10 mm	£33.87
EM-ZH13BS-08-10	1.3 mm	-88	8 mm	10 mm	£33.87

E-ZH SERIES
VACUUM EJECTOR
BSP – WITH MUFFLER



PART NUMBER	TUBE SIZE	VACUUM (KPA)	PORT IN	VACUUM PORT	PRICE
EM-ZH05BL-01-01	0.5 mm	-48	1/8"	1/8"	£32.87
EM-ZH05BS-01-01	0.5 mm	-88	1/8"	1/8"	£32.87
EM-ZH07BL-01-01	0.7 mm	-48	1/8"	1/8"	£32.87
EM-ZH07BS-01-01	0.7 mm	-88	1/8"	1/8"	£32.87
EM-ZH10BL-01-01	1.0 mm	-48	1/8"	1/8"	£32.87
EM-ZH10BS-01-01	1.0 mm	-88	1/8"	1/8"	£32.87
EM-ZH13BL-01-02	1.3 mm	-48	1/8"	1/4"	£40.61
EM-ZH13BS-01-02	1.3 mm	-88	1/8"	1/4"	£40.61

E-ZH SERIES
VACUUM EJECTOR
PUSH IN – WITHOUT MUFFLER



PART NUMBER	TUBE SIZE	VACUUM (KPA)	PORT IN	VACUUM PORTS	PRICE
EM-ZH13DS-08-10-10	1.3 mm	-88	8 mm	10 mm	£27.09

ZFC SERIES VACUUM FILTER

ZFC SERIES IN-LINE
VACUUM FILTER
WITH BRACKET



PART NUMBER	MAX. FLOW RATE	TUBE SIZE	PRICE
EM-E-ZFC100-04B	20 l/min	4 mm	£17.41
EM-E-ZFC100-06B	20 l/min	6 mm	£17.41
EM-E-ZFC200-06B	50 l/min	6 mm	£24.20
EM-E-ZFC200-08B	50 l/min	8 mm	£24.20