

## MC SERIES

### DESCRIPTION

The metal bowls of these filters come complete with a transparent sight glass and have a condensate drain valve.

### SPECIFICATIONS

Construction	Modular, compact with filtering element in HDPE
Materials	Zama, NBR, technopolymer
Mounting	Vertical in-line or wall mounting
Operating temperature	0°C to 50°C at 10 bar
Porosity of filtering element	25 µm standard – 5 µm upon request
Draining of condensate	Manual – semi-automatic standard
Finishing	Enamelled
Operating pressure	Standard drain 0.3 to 16 bar Protected depressurisation 0.3 to 16 bar Depressurisation 0.3 to 10 bar Automatic drain 1.5 to 15 bar for G3/8 & G1/2



**SERIES MC**  
**25 MICRON**

2505

PART NUMBER	PORT	DRAIN TYPE	PRICE
ZMC104-F00	1/4"	Semi-automatic	£30.94
ZMC104-F04	1/4"	Depressurisation	£33.97

## MD SERIES

### DESCRIPTION

Bowl with technopolymer cover and bayonet-type mounting.

### SPECIFICATIONS

Construction	Modular, compact with filtering element in HDPE
Mounting	Vertical in-line or wall mounting (by clamps)
Operating temperature	-5°C to +50°C up to 16 bar
Porosity of filtering element	25 micron filtering element
Draining of condensate	Semi-automatic manual, automatic protected depressurisation
Fluid	Compressed air
Operating pressure	0.3 to 16 bar

### MATERIALS

Body	Polyamide
Tank	Polycarbonate
Valve guide	Polyamide
Filtering element	Polyethylene
Separation deflector	Polycetal
Seal	NBR



**SERIES MD**  
**WITH INDICATOR**

2505

PART NUMBER	PORT	DRAIN TYPE	PRICE
ZMD1-F001-1/8	1/8"	Semi-automatic	£46.04
ZMD1-F001-1/4	1/4"	Semi-automatic	£46.04
ZMD1-F001-3/8	3/8"	Semi-automatic	£46.04

### WITHOUT INDICATOR

ZMD1-F000-1/8	1/8"	Semi-automatic	£27.81
ZMD1-F000-1/4	1/4"	Semi-automatic	£27.81
ZMD1-F000-3/8	3/8"	Semi-automatic	£27.81

## MX SERIES

### DESCRIPTION

Bowl with technopolymer cover and bayonet-type mounting.

### SPECIFICATIONS

Construction	Modular, compact with filtering element in HDPE
Mounting	Vertical in-line or wall mounting (by clamps)
Operating temperature	-5°C to +60°C at 10 bar
Porosity of filtering element	25 µm standard – 5 µm upon request
Draining of condensate	Manual – semi-automatic standard MX2: automatic depressurisation
Condensate capacity	MX2: 55cc MX3: 85cc
Fluid	Compressed air
Operating pressure	Standard drain 0.3 to 16 bar Automatic drain 1.5 to 12 bar

### MATERIALS

Body	Aluminium with polyacetal covering
Bowl (technopolymer cover)	Polycarbonate / polyamide
Valve guide	Polyacetal
Filtering element	Polyethylene
Separation deflector	Polyacetal
Seals	NBR



**SERIES MX**  
**25 MICRON**

2505

PART NUMBER	SIZE	PORT	DRAIN TYPE	PRICE
ZMX2-3/8-F03	MX2	3/8"	Automatic	£100.28
ZMX2-1/2-F03	MX2	1/2"	Automatic	£100.28
ZMX2-3/4-F03	MX2	3/4"	Automatic	£100.28
ZMX3-3/4-F03	MX3	3/4"	Automatic	£117.40
ZMX3-1-F03	MX3	1"	Automatic	£117.40
ZMX2-3/8-F00	MX2	3/8"	Semi-automatic	£41.68
ZMX2-1/2-F00	MX2	1/2"	Semi-automatic	£41.68
ZMX2-3/4-F00	MX2	3/4"	Semi-automatic	£41.68
ZMX3-3/4-F00	MX3	3/4"	Semi-automatic	£75.29
ZMX3-1-F00	MX3	1"	Semi-automatic	£75.29

## MC SERIES

### DESCRIPTION

The standard regulator has a relieving diaphragm.

### SPECIFICATIONS

Construction	Modular, compact, diaphragm type
Materials	Zama, brass, NBR, technopolymer
Mounting	In-line wall or console mounting (in any position)
Operating temperature	0°C to 50°C
Finishing	Enamelled
Inlet pressure	0 to 16 bar
Outlet pressure	0.5 to 10 bar or 0 to 4 bar



### SERIES MC SELF RELIEVING

2505

PART NUMBER	PORT	PRESSURE	PRICE
ZMC104-R00	1/4"	0.5 to 10 bar	£36.96
ZMC104-R10	1/4"	0 to 4 bar	£36.96

## MD SERIES

### DESCRIPTION

Manifold, with bypass valve, calibrated, locked.

### SPECIFICATIONS

Construction	Modular, compact with pre-formed diaphragm
Materials	Polyamide, brass, zinc plated steel, NBR, stainless steel
Mounting	In-line; wall mounting; panel mounting
Operating temperature	-5°C to +50°C up to 16 bar
Inlet pressure	0 to 16 bar
Outlet pressure	0.5 to 10 bar



### SERIES MD SELF RELIEVING



2505

PART NUMBER	PORT	PRESSURE	PRICE
ZMD1-R000-1/8	1/8"	0.5 to 10 bar	£32.76
ZMD1-R000-1/4	1/4"	0.5 to 10 bar	£32.76
ZMD1-R000-3/8	3/8"	0.5 to 10 bar	£32.76

### NON RELIEVING

ZMD1-R010-3/8	3/8"	0.5 to 10 bar	£32.76
ZMD1-R010-1/4	1/4"	0.5 to 10 bar	£32.76

## MX SERIES

### DESCRIPTION

Modular – available with built-in pressure gauges or ports for gauges. Tamperproof system (lockable regulator). Manifold version also available.

### SPECIFICATIONS

Construction	Modular, compact diaphragm type
Mounting	Vertical in-line or wall mounting (by clamps) or panel mounting
Operating temperature	-5°C to +60°C at 10 bar
Inlet pressure	0 to 16 bar
Outlet pressure	0.5 to 10 bar (standard) 0 to 4 bar 0.5 to 7 bar (MX2 only)
Overpressure exhaust	With relieving (standard)
Fluid	Compressed air
Pressure gauge	Built-in pressure gauge (standard) G1/4" ports for pressure gauge (MX3 only) G1/8" ports for pressure gauge (MX2 only)

### MATERIALS

Body	Aluminium with polyacetal covering
Valve holder plug	Polyacetal
Regulator knob	Polyamide
Upper spring	Zinc plated steel
Lower spring	Stainless steel
Seals and diaphragm	NBR



### SERIES MX – 0.5 to 10 bar SELF RELIEVING

2505

PART NUMBER	SIZE	PORT	DESCRIPTION	PRICE
ZMX2-3/8-R004	MX2	3/8"	With gauge	£71.79
ZMX2-1/2-R004	MX2	1/2"	With gauge	£71.79
ZMX2-3/4-R004	MX2	3/4"	With gauge	£71.79
ZMX3-3/4-R004	MX3	3/4"	With gauge	£115.59
ZMX3-1-R004	MX3	1"	With gauge	£115.59
ZMX2-3/8-R000	MX2	3/8"	Without gauge	£54.47
ZMX2-1/2-R000	MX2	1/2"	Without gauge	£54.47
ZMX2-3/4-R000	MX2	3/4"	Without gauge	£54.47
ZMX3-3/4-R000	MX3	3/4"	Without gauge	£105.81
ZMX3-1-R000	MX3	1"	Without gauge	£105.81

## M SERIES

### DESCRIPTION

The standard regulator has a relieving diaphragm.

### SPECIFICATIONS

Construction	Diaphragm type
Materials	Brass, NBR, technopolymer
Mounting	In-line or panel mounting (in any position)
Operating temperature	0°C to 50°C
Inlet pressure	0 to 16 bar
Outlet pressure	0.5 to 10 bar



### SERIES M (MICRO) SELF RELIEVING

2505

PART NUMBER	PORT	PRESSURE	PRICE
ZM008-R00	1/8"	0.5 to 10 bar	£24.47
ZM004-R00	1/4"	0.5 to 10 bar	£24.47

### NON RELIEVING

ZM008-R01	1/8"	0.5 to 10 bar	£24.47
ZM004-R01	1/4"	0.5 to 10 bar	£24.47

## T SERIES

### DESCRIPTION

A self relieving piston has been incorporated into the design to allow decreasing adjustments. All models are equipped with a valve, enabling fast venting (VS), which is useful when a regulator should be inserted between the valve and cylinder (or capacity) without any negative influence on the exhaust.

### SPECIFICATIONS

Construction	Piston regulator
Materials	Brass, NBR, technopolymer
Operating temperature	-5°C to +50°C
Pressure gauge ports	G1/8
Inlet pressure	0 to 12 bar
Outlet pressure	0.5 to 10 bar
Secondary pressure relieving	Standard
Fluid type	Air and water



### SERIES T (MICRO) SELF RELIEVING

2505

PART NUMBER	PORT	PRESSURE	PRICE
ZT108-R00	1/8"	0.5 to 10 bar	£20.80
ZT108-R10	1/8"	0 to 4 bar	£22.35
ZT108-R20	1/8"	0 to 2 bar	£20.80
ZT108-R70	1/8"	0 to 7 bar	£20.80

### NON RELIEVING

ZT108-R01	1/8"	0.5 to 10 bar	£22.35
ZT108-R11	1/8"	0 to 4 bar	£22.35
ZT108-R21	1/8"	0 to 2 bar	£22.35
ZT108-R71	1/8"	0 to 7 bar	£20.80

## MC SERIES

### DESCRIPTION

With metal bowl and bayonet-type mounting. Bowls are also equipped with a transparent viewer. The oil flow can be monitored via the small transparent cap and regulated by means of the special adjusting screw.

### SPECIFICATIONS

Construction	Modular, compact
Materials	Zama, NBR, technopolymer
Mounting	Vertical in-line or wall mounting
Operating temperature	0°C to 50°C at 10 bar
Oil refilling	Without pressure (G1/4)
Oil for lubrication	Up to ISO VG32
Finishing	Enamelled
Operating pressure	0 to 16 bar



### SERIES MC LUBRICATORS

2505

PART NUMBER	CONNECTION	PRICE
ZMC104-L00	1/4"	£42.17

## MD SERIES

### DESCRIPTION

Modular assembly. Bowl with technopolymer cover and bayonet-type mounting

### SPECIFICATION

Construction	Modular, compact
Materials	Polyamide, polycarbonate, NBR
Mounting	In vertical position by means of through holes in the body
Operating temperature	-5°C to +50°C up to 16 bar
Oil for lubrication	Use ISO VG32 oils. Once applied, the lubrication should never be interrupted
Operating pressure	0 to 16 bar



### SERIES MD LUBRICATORS

2505

PART NUMBER	CONNECTION	PRICE
ZMD1-L00-1/8	1/8"	£35.77
ZMD1-L00-1/4	1/4"	£35.77
ZMD1-L00-3/8	3/8"	£35.77

## MX SERIES

### DESCRIPTION

Bowl with technopolymer cover and bayonet type mounting. Ability to refill the oil even with system under pressure.

### SPECIFICATIONS

Construction	Modular, compact
Mounting	Vertical in-line or wall mounting (by clamps)
Operating temperature	-5°C to +60°C at 10 bar
Oil capacity	MX2: 118cc MX3: 170cc
Oil refilling	Even during use
Oil for lubrication	Up to ISO VG32
Operating pressure	0 to 16 bar

### MATERIALS

Body	Aluminium with polyacetal covering
Bowl (technopolymer cover)	Polycarbonate / polyamide
Viewer	Polyamide
Seals and diaphragm	NBR



### LUBRICATORS SERIES MX

2505

PART NUMBER	SIZE	CONNECTION	PRICE
ZMX2-3/8-L00	MX2	3/8"	£50.92
ZMX2-1/2-L00	MX2	1/2"	£50.92
ZMX2-3/4-L00	MX2	3/4"	£50.92
ZMX3-3/4-L00	MX3	3/4"	£90.14
ZMX3-1-L00	MX3	1"	£90.14

## MC SERIES

### DESCRIPTION

Combines the features of the MC filters and regulators but has smaller overall dimensions than the two separate components.

### SPECIFICATIONS

Construction	Modular, compact with filtering element in HDPE – diaphragm type
Materials	Zama, NBR, technopolymer
Pressure gauge ports	G1/8
Mounting	Vertical in-line or wall mounting
Operating temperature	0°C to 50°C at 10 bar
Porosity of filtering element	25 µm standard – 5 µm upon request
Draining of condensate	Manual – semi-automatic standard
Finishing	Enamelled
Inlet pressure	Standard drain 0.3 to 16 bar Protected depressurisation 0.3 to 16 bar Depressurisation 0.3 to 10 bar



### SERIES MC 25 MICRON

2505

PART NUMBER	PORT	DRAIN TYPE	PRICE
ZMC104-D00	1/4"	Semi-automatic	£54.36
ZMC104-D04	1/4"	Depressurisation	£59.66

## MD SERIES

### DESCRIPTION

Modular assembly. Bowl with technopolymer cover and bayonet-type mounting.

### SPECIFICATION

Construction	Modular, compact with filtering element in HDPE
Materials	Polyamide, polycarbonate, brass, polyacetal, polyethylene, zinc plated steel, NBR, stainless steel
Pressure gauge ports	G1/8
Mounting	In-line: wall mounting by means of through holes in the body or with a support bracket; panel mounting
Operating temperature	-5°C to +50°C up to 16 bar
Porosity of filtering element	Between 25 µm or 5 µm
Draining of condensate	Semi-automatic manual, automatic protected depressurisation, direct G1/8 exhaust
Fluid	Compressed air



### SERIES MD 25 MICRON SELF RELIEVING

2505

PART NUMBER	PORT	DRAIN TYPE	PRICE
ZMD1-FR2000-1/8	1/8"	Semi-automatic	£44.27
ZMD1-FR2000-1/4	1/4"	Semi-automatic	£44.27
ZMD1-FR2000-3/8	3/8"	Semi-automatic	£44.27

### 25 MICRON NON RELIEVING

ZMD1-FR0000-1/8	1/8"	Semi-automatic	£44.27
ZMD1-FR0000-1/4	1/4"	Semi-automatic	£44.27
ZMD1-FR0000-3/8	3/8"	Semi-automatic	£44.27

## MX SERIES

### DESCRIPTION

Bowl with technopolymer cover and bayonet type mounting. Lockable knob with closure. Bowl locking system reduces the risk of accidents.

### SPECIFICATIONS

Construction	Modular, compact with filtering element in HDPE
Mounting	Vertical in-line, wall mounting (by clamps) or panel mounting
Operating temperature	0°C to 60°C at 10 bar
Porosity of filtering element	25 µm standard – 5 µm upon request
Draining of condensate	Manual: semi-automatic standard MX2: automatic
Condensate capacity	MX2: 55cc MX3: 85cc
Fluid	Compressed air
Operating pressure	Standard drain 0.3 to 16 bar Automatic drain 1.5 to 12 bar
Pressure gauge	Built-in pressure gauge (standard) G1/4" ports for pressure gauge (MX3 only) G1/8" ports for pressure gauge (MX2 only)

### MATERIALS

Body	Aluminium with polyacetal covering
Bowl (technopolymer cover)	Polycarbonate / polyamide
Valve guide	Polyacetal
Filtering element	Polyethylene
Separation deflector	Polyacetal
Knob	Polyamide
Upper spring	Zinc plated steel
Lower spring	Stainless steel
Seals and diaphragm	NBR



### SERIES MX 25 MICRON – WITH PRESSURE GAUGE

2505

PART NUMBER	SIZE	PORT	DRAIN TYPE	PRICE
ZMX2-3/8-FR0304	MX2	3/8"	Automatic	£144.71
ZMX2-1/2-FR0304	MX2	1/2"	Automatic	£144.71
ZMX2-3/4-FR0304	MX2	3/4"	Automatic	£144.71
ZMX3-3/4-FR0304	MX3	3/4"	Automatic	£179.44
ZMX3-1-FR0304	MX3	1"	Automatic	£179.44
ZMX2-3/8-FR0004	MX2	3/8"	Semi-automatic	£85.95
ZMX2-1/2-FR0004	MX2	1/2"	Semi-automatic	£85.95
ZMX2-3/4-FR0004	MX2	3/4"	Semi-automatic	£85.95
ZMX3-3/4-FR0004	MX3	3/4"	Semi-automatic	£136.51
ZMX3-1-FR0004	MX3	1"	Semi-automatic	£136.51

### 25 MICRON – WITHOUT PRESSURE GAUGE

ZMX2-3/8-FR0300	MX2	3/8"	Automatic	£128.64
ZMX2-1/2-FR0300	MX2	1/2"	Automatic	£128.64
ZMX2-3/4-FR0300	MX2	3/4"	Automatic	£128.64
ZMX3-3/4-FR0300	MX3	3/4"	Automatic	£169.66
ZMX3-1-FR0300	MX3	1"	Automatic	£169.66
ZMX2-3/8-FR0000	MX2	3/8"	Semi-automatic	£69.90
ZMX2-1/2-FR0000	MX2	1/2"	Semi-automatic	£69.90
ZMX2-3/4-FR0000	MX2	3/4"	Semi-automatic	£69.90
ZMX3-3/4-FR0000	MX3	3/4"	Semi-automatic	£126.72
ZMX3-1-FR0000	MX3	1"	Semi-automatic	£126.72

## MC SERIES

### DESCRIPTION

Designed to block the air inlet of the FRL group and to pressurise and depressurise the equipment.

### SPECIFICATIONS

Construction	Modular, compact, poppet type
Materials	Zama, NBR, technopolymer
Mounting	In-line, wall or panel mounting (in any position)
Operating temperature	0°C to 50°C
Finishing	Enamelled
Inlet pressure	2 to 10 bar
Nominal exhaust flow	G1/4 1080 Nl/min



### SERIES MC

2505

PART NUMBER	PORT	PRICE
ZMC104-V01	1/4"	£78.57

Flow determined at 6 bar with  $\Delta P = 1$  bar

## MD SERIES

### DESCRIPTION

Offers multi-sector solutions that ensure saving in terms of installation time, space and costs. Allow the inlet and exhaust of compressed air from the plant and can meet several application requirements. Manual, electro-pneumatic, servo-pilot and pneumatic control.

### SPECIFICATION

Construction	Modular, compact, spool type
Mounting	In-line or wall mounting (by brackets)
Operating temperature	-5°C to +50°C up to 16 bar
Operating pressure	-0.8 to 10 bar
Nominal exhaust flow	TBA
Fluid	Compressed air

### MATERIALS

Body	Polyamide
Covering	Polyamide
Plug	Polyamide
Spool	Anodised aluminium
End cover	Polyamide
Lower spring	Stainless steel
Seals	NBR



### SERIES MD PNEUMATIC CONTROL

2505

PART NUMBER	PORT	PRICE
ZMD1-V36-1/8	1/8"	£69.06
ZMD1-V36-1/4	1/4"	£69.06
ZMD1-V36-3/8	3/8"	£69.06

### MANUAL CONTROL

ZMD1-V01-1/8	1/8"	£47.81
ZMD1-V01-1/4	1/4"	£47.81
ZMD1-V01-3/8	3/8"	£47.81

### ELECTRO-PNEUMATIC CONTROL

ZMD1-V16-1/8	1/8"	£77.91
ZMD1-V16-1/4	1/4"	£77.91
ZMD1-V16-3/8	3/8"	£77.91

## MX SERIES

### DESCRIPTION

Manual isolation valves: ideal to allow an easy access to the FRL group. The system is depressurised with the deactivation of the valve. Standard tamperproof lock-out. One / more locks for the lock-out feature. It exhausts in atmosphere. Silencers available on request.

### SPECIFICATIONS

Construction	Modular, compact spool type
Mounting	Vertical in-line or wall mounting (by clamps)
Operating temperature	-5°C to +60°C at 10 bar
Operating pressure	-0.8 to 10 bar
Nominal exhaust flow	MX2: 6000 Nl/min MX3: 9200 Nl/min
Fluid	Compressed air

### MATERIALS

Body	Aluminium with polyacetal covering
Valve holder plug	Polyacetal
Lower spring	Zinc plated steel
Spool	Aluminium
Seals	NBR



### SERIES MX

2505

PART NUMBER	SIZE	PORT	PRICE
ZMX2-3/8-V01	MX2	3/8"	£87.11
ZMX2-1/2-V01	MX2	1/2"	£87.11
ZMX2-3/4-V01	MX2	3/4"	£87.26
ZMX3-3/4-V01	MX3	3/4"	£101.48
ZMX3-1-V01	MX3	1"	£101.48

Flow determined at 6 bar with  $\Delta P = 1$  bar

## MC SERIES

### DESCRIPTION

Filter / regulators combine the features of the MC filters and regulators but with smaller overall dimensions than the two separate components. The oil flow of the lubricator can be monitored via the small transparent cap and regulated by means of the special adjusting screw.

### SPECIFICATIONS

Construction	Compact modular with filtering element in HDPE – diaphragm type
Materials	Zama, NBR, technopolymer
Mounting	Vertical in-line or wall mounting
Operating temperature	0°C to 50°C at 10 bar
Porosity of filtering element	25 µm standard – 5 µm upon request
Draining of condensate	Manual to semi-automatic standard
Finishing	Enamelled
Oil refilling	Without pressure (G1/4)
Oil for lubrication	Up to ISO VG32
Inlet pressure	Standard drain 0.3 to 16 bar Protected depressurisation 0.3 to 16 bar Depressurisation 0.3 to 10 bar
Lubricator operating pressure	0 to 16 bar



### SERIES MC INCLUDES GAUGE & BRACKET

2505

PART NUMBER	CONNECTION	PRICE
ZMC104-C25	1/4"	£118.30

## MD SERIES

### DESCRIPTION

Offers multi-sector solutions that ensure saving in terms of installation time, space and costs. Easy and quick maintenance. Reduced weight, quick fixing with a wide range of functions and additional air intakes.

### SPECIFICATION

Construction	Modular, compact
Ports	threaded or integrated with super-rapid fitting for tube with diameter 6, 8 and 10 mm
Mounting	Vertical in-line, wall mounting via support bracket, panel mounting
Operating temperature	-5°C to +50°C up to 16 bar



### SERIES MD 5 MICRON WITH GAUGE & BRACKET

2505

PART NUMBER	CONNECTION	PRICE
ZMD1-000026-1/8	1/8"	£97.39
ZMD1-000026-1/4	1/4"	£97.39
ZMD1-000026-3/8	3/8"	£97.39

### 25 MICRON WITH GAUGE & BRACKET

ZMD1-000015-1/8	1/8"	£97.39
ZMD1-000015-1/4	1/4"	£97.39
ZMD1-000015-3/8	3/8"	£97.39

## MX SERIES

### DESCRIPTION

Filter / regulator and lubricator assembly through rapid clamps. Compact design. Easy and quick maintenance. Reduced weight.

### SPECIFICATIONS

Construction	Modular, compact
Mounting	Vertical in-line or wall mounting (by clamps) or panel mounting
Operating temperature	0°C to 60°C at 10 bar

Also available with port for external pressure gauge.  
Please ask for details.



### SERIES MX WITH INTEGRATED GAUGE

2505

PART NUMBER	SIZE	PORT	PRICE
ZMX2-3/8-000015	MX2	3/8"	£147.86
ZMX2-1/2-000015	MX2	1/2"	£147.86
ZMX2-3/4-000015	MX2	3/4"	£147.86
ZMX3-3/4-000015	MX3	3/4"	£241.19
ZMX3-1-000015	MX3	1"	£241.19

## MD SERIES

### DESCRIPTION

Offers multi-sector solutions that ensure saving in terms of installation time, space and costs. Easy and quick maintenance. Reduced weight, quick fixing with a wide range of functions and additional air intakes.

### SPECIFICATION

Construction	Modular, compact
Ports	Threaded or integrated with super-rapid fitting for tube with diameter 6, 8 and 10 mm
Mounting	Vertical in-line, wall mounting via support bracket, panel mounting
Operating temperature	-5°C to +50°C up to 16 bar



### SERIES MD 5 MICRON GAUGE & BRACKET

2505

PART NUMBER	CONNECTION	PRICE
ZMD1-000028-1/8	1/8"	£110.49
ZMD1-000028-1/4	1/4"	£110.49
ZMD1-000028-3/8	3/8"	£110.49

### 25 MICRON GAUGE & BRACKET

ZMD1-000017-1/8	1/8"	£110.49
ZMD1-000017-1/4	1/4"	£110.49
ZMD1-000017-3/8	3/8"	£110.49

# FILTER / REGULATOR, LUBRICATOR AND ISOLATION VALVE ASSEMBLY

## MD SERIES

### DESCRIPTION

Offers multi-sector solutions that ensure saving in terms of installation time, space and costs. Easy and quick maintenance. Reduced weight, quick fixing with a wide range of functions and additional air intakes.

### SPECIFICATION

Construction	Modular, compact
Ports	Threaded or integrated with super-rapid fitting for tube with diameter 6, 8 and 10 mm
Mounting	Vertical in-line, wall mounting via support bracket, panel mounting
Operating temperature	-5°C to +50°C up to 16 bar



### SERIES MD 5 MICRON GAUGE & BRACKET

2505

PART NUMBER	CONNECTION	PRICE
ZMD1-000027-1/8	1/8"	£145.59
ZMD1-000027-1/4	1/4"	£145.59
ZMD1-000027-3/8	3/8"	£145.59

### 25 MICRON GAUGE & BRACKET

ZMD1-000016-1/8	1/8"	£145.59
ZMD1-000016-1/4	1/4"	£145.59
ZMD1-000016-3/8	3/8"	£145.59



## MC SERIES

### DESCRIPTION

The metal bowls of these filters come complete with a transparent sight glass and have a condensate drain valve. The standard regulator has a relieving diaphragm. The oil flow of the lubricator can be monitored via the small transparent cap and regulated by means of the special adjusting screw.

### SPECIFICATIONS

Construction	Modular, compact with filtering element in HDPE
Materials	Zama, NBR, technopolymer
Operating temperature	0°C to 50°C at 10 bar
Porosity of filtering element	25 µm standard – 5 µm upon request
Draining of condensate	Manual – Semi-automatic standard
Finishing	Enamelled
Oil refilling	Without pressure (G1/4)
Oil for lubrication	Up to ISO VG32
Inlet pressure	Standard drain 0.3 to 16 bar Protected depressurisation 0.3 to 16 bar Depressurisation 0.3 to 10 bar
Regulator inlet pressure	0 to 16 bar
Regulator outlet pressure	0.5 to 10 bar or 0 to 4 bar
Lubricator operating pressure	0 to 16 bar



### SERIES MC INCLUDES GAUGE AND BRACKET

2505

PART NUMBER	CONNECTION	PRICE
ZMC104FRL25	1/4"	£135.40

## MX SERIES

### DESCRIPTION

Filter, regulator and lubricator assembly through rapid clamps. Compact design. Easy and quick maintenance. Reduced weight.

### SPECIFICATIONS

Construction	Modular, compact
Mounting	Vertical in-line or wall mounting (by clamps) or panel mounting
Operating temperature	0°C to 60°C at 10 bar



### SERIES MX WITH INTEGRATED GAUGE

2505

PART NUMBER	SIZE	PORT	PRICE
ZMX2-3/8-000014	MX2	3/8"	£184.26
ZMX2-1/2-000014	MX2	1/2"	£184.26
ZMX2-3/4-000014	MX2	3/4"	£184.26
ZMX3-3/4-000014	MX3	3/4"	£307.96
ZMX3-1-000014	MX3	1"	£307.96

## FRL ACCESSORIES – FOR USE WITH SERIES MC & M



### MOUNTING BRACKET SERIES MC, M

2505

PART NUMBER	CONNECTION	PRICE
ZC114ST	1/8" – 1/4"	£2.49

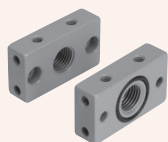


### MOUNTING BRACKET SERIES MC, M

2505

PART NUMBER	CONNECTION	PRICE
ZC114ST/1	1/8" – 1/4"	£3.11

## FRL ACCESSORIES – FOR USE WITH SERIES MC



### TERMINAL FLANGES – KIT A SERIES MC

2505

PART NUMBER	CONNECTION	PRICE
ZMC104FL	1/4"	£15.21



### 2 MOUNTING BRACKETS – KIT B SERIES MC

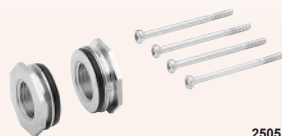
2505

PART NUMBER	CONNECTION	PRICE
ZMC104ST	1/4"	£4.76

## FRL ACCESSORIES – FOR USE WITH SERIES MD

New

### THREADED CARTRIDGE KIT SERIES MD



2505

PART NUMBER	CONNECTION	PRICE
ZMD1-A-1/8	1/8"	£4.17
ZMD1-A-1/4	1/4"	£4.17
ZMD1-A-3/8	3/8"	£4.17

New

### SCREWS FOR WALL MOUNTING SERIES MD

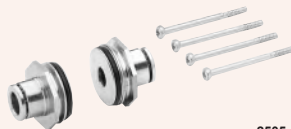


2505

PART NUMBER	SUPPLIED WITH	PRICE
ZMD1-D	2 x white zinc plated screws M4 x 50	£0.25

New

### SUPER RAPID FITTING KIT SERIES MD



2505

PART NUMBER	SIZE	PRICE
ZMD1-A-6	6 mm	£6.38
ZMD1-A-8	8 mm	£7.23
ZMD1-A-10	10 mm	£7.98

New

### MOUNTING BRACKET SERIES MD



2505

PART NUMBER	FOR USE WITH	PRICE
ZMD1-ST	MD	£3.46

New

### JOINING CARTRIDGE KIT SERIES MD



2505

PART NUMBER	SUPPLIED WITH	PRICE
ZMD1-C	4 x special white zinc plated screws	£2.87

New

### MOUNTING BRACKET SERIES MC, M AND MD



2505

PART NUMBER	FOR USE WITH	PRICE
ZC114-ST	MC, M and MD	£2.49

## FRL ACCESSORIES – FOR USE WITH SERIES MX

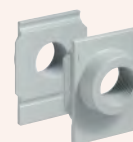
### FIXING BRACKET SERIES MX



2505

PART NUMBER	FOR USE WITH	PRICE
ZMX2-S	MX2	£2.23
ZMX3-S	MX3	£3.44

### TERMINAL FLANGES SERIES MX



2505

PART NUMBER	CONNECTION	PRICE
ZMX2-3/8-FL	3/8"	£14.43
ZMX2-1/2-FL	1/2"	£14.43
ZMX2-3/4-FL	3/4"	£14.43
ZMX3-3/4-FL	3/4"	£23.84
ZMX3-1-FL	1"	£23.84

### RAPID CLAMP KIT SERIES MX2



2505

PART NUMBER	SUPPLIED WITH	PRICE
ZMX2-X	1 Rapid clamp, 1 O-Ring, 2 Hexagonal nuts M5, 2 Screws M5 x 69	£7.81
ZMX2-Z	1 Rapid clamp, 1 O-Ring, 1 Hexagonal nut M5, 1 Screw M5 x 69, 1 Screw M5 x 85 for wall fixing	£7.82

### RAPID CLAMP KIT WITH WALL FIXING BRACKETS SERIES MX2



2505

PART NUMBER	SUPPLIED WITH	PRICE
ZMX2-Y	1 Wall rapid clamp, 1 O-Ring, 2 Hexagonal nuts, 2 Screws M5 x 69	£7.82

### SERIES MX3

ZMX3-X	1 Rapid clamp, 1 O-Ring, 2 Square nuts M6, 2 Screws M6 x 75	£11.36
ZMX3-Z	1 Rapid clamp, 1 O-Ring, 1 Square nut M6, 1 Screw M6 x 75, 1 Screw M6 x 90 for wall fitting	£11.36

### SERIES MX3

ZMX3-Y	1 Wall rapid clamp, 1 O-Ring, 2 Square nuts M6, 2 Screws M6 x 75	£11.36
--------	--	--------

## DESCRIPTION

**ISO 6432** – Mini Cylinder Series 16 is manufactured according to the European Standard Specifications CETOP RP52-P and DIN/ISO 6432. Since Series 16 may be required to operate at very high speeds, a fixed mechanical cushioning has been fitted, as standard, in order to reduce wear by high impact loads.



## SPECIFICATIONS

Type of construction	Flanged
Operation	Double acting, non-magnetic
Materials	Aluminium end blocks. Stainless steel tube and piston rod. Polyurethane seals
Operating pressure	1 to 10 bar
Operating temperature	0°C to 80°C (with dry air -20°C)
Bore	ø16 mm, ø20 mm, ø25 mm
Mounting	Screw, flange, feet, trunnion

## CYLINDERS



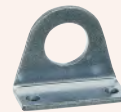
### SERIES 16

2530

PART NUMBER	BORE	STROKE	PRICE
Z16N2A08A010	8 mm	10 mm	£32.49
Z16N2A08A025	8 mm	25 mm	£34.26
Z16N2A08A040	8 mm	40 mm	£34.96
Z16N2A08A050	8 mm	50 mm	£35.70
Z16N2A08A080	8 mm	80 mm	£36.68
Z16N2A08A100	8 mm	100 mm	£37.42
Z16N2A10A010	10 mm	10 mm	£32.49
Z16N2A10A025	10 mm	25 mm	£34.26
Z16N2A10A040	10 mm	40 mm	£34.96
Z16N2A10A050	10 mm	50 mm	£35.70
Z16N2A10A080	10 mm	80 mm	£36.68
Z16N2A10A100	10 mm	100 mm	£37.42
Z16N2A12A010	12 mm	10 mm	£37.42
Z16N2A12A025	12 mm	25 mm	£38.16
Z16N2A12A040	12 mm	40 mm	£39.04
Z16N2A12A050	12 mm	50 mm	£39.86
Z16N2A12A080	12 mm	80 mm	£40.60
Z16N2A12A100	12 mm	100 mm	£42.20

## ACCESSORIES

### FEET TYPE BRACKET SERIES 16



2530

PART NUMBER	CYLINDER BORE	PRICE
ZB-8-10	8 – 10 mm	£5.18

### TRUNNION BRACKET SERIES 16



2530

PART NUMBER	CYLINDER BORE	PRICE
ZI-8-10	8 – 10 mm	£5.52

### FLANGE BRACKET SERIES 16



2530

PART NUMBER	CYLINDER BORE	PRICE
ZE-8-10	8 – 10 mm	£2.34

### ROD FORK END SERIES 16



2530

PART NUMBER	CYLINDER BORE	PRICE
ZG-8-10	8 – 10 mm	£4.97

## DESCRIPTION

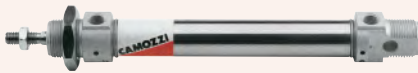
**ISO 6432** – Mini Cylinder Series 24 is manufactured according to the European Standard Specifications CETOP RP52-P and DIN/ISO 6432. Since Series 24 may be required to operate at very high speeds, a fixed mechanical cushioning has been fitted, as standard, in order to reduce wear by high impact loads.



## SPECIFICATIONS

Type of construction	Flanged
Operation	Double acting, magnetic
Materials	Aluminium end blocks. Stainless steel tube and piston rod. Polyurethane seals
Operating pressure	1 to 10 bar
Operating temperature	0°C to 80°C (with dry air -20°C)
Bore	ø16 mm, ø20 mm, ø25 mm
Mounting	Screw, flange, feet, trunnion

## CYLINDERS



SERIES 24

2530

PART NUMBER	BORE	STROKE	PRICE
Z24N2A16A10	16 mm	10 mm	£39.04
Z24N2A16A25	16 mm	25 mm	£39.86
Z24N2A16A40	16 mm	40 mm	£40.60
Z24N2A16A50	16 mm	50 mm	£41.61
Z24N2A16A80	16 mm	80 mm	£43.13
Z24N2A16100	16 mm	100 mm	£43.85
Z24N2A20A10	20 mm	10 mm	£40.60
Z24N2A20A25	20 mm	25 mm	£41.61
Z24N2A20A40	20 mm	40 mm	£42.20
Z24N2A20A50	20 mm	50 mm	£43.13
Z24N2A20A80	20 mm	80 mm	£45.53
Z24N2A20100	20 mm	100 mm	£47.28
Z24N2A25A10	25 mm	10 mm	£45.53
Z24N2A25A25	25 mm	25 mm	£46.30
Z24N2A25A40	25 mm	40 mm	£47.28
Z24N2A25A50	25 mm	50 mm	£47.91
Z24N2A25A80	25 mm	80 mm	£49.63
Z24N2A25100	25 mm	100 mm	£50.39

## ACCESSORIES

### FEET-TYPE BRACKET SERIES 24



2530

PART NUMBER	CYLINDER BORE	PRICE
ZB-12/16	12 – 16 mm	£6.64
ZB-20/25	20 – 25 mm	£7.57

### TRUNNION BRACKET SERIES 24



2530

PART NUMBER	CYLINDER BORE	PRICE
ZI-12/16	12 – 16 mm	£5.63
ZI-20/25	20 – 25 mm	£7.41

### FLANGE BRACKET SERIES 24



2530

PART NUMBER	CYLINDER BORE	PRICE
ZE-12/16	12 – 16 mm	£2.78
ZE-20/25	20 – 25 mm	£3.85

### ROD FORK END SERIES 24



2530

PART NUMBER	CYLINDER BORE	PRICE
ZG-12-16	12 – 16 mm	£3.46
ZG-20	20 mm	£3.57
ZG-25-32	25 – 32 mm	£2.99

## DESCRIPTION

Series 31 compact single and double acting cylinders are available in 10 different bore sizes from  $\varnothing 12$  to  $\varnothing 100$ . The guides are inserted in the external profile, parallel to the sliding axis on three sides. These guides are used to locate the switches that sense the piston position. The construction design of these cylinders provides excellent axis stability. They are available either with a male or female thread. These cylinders can be supplied in W version for high temperatures (140°C). The W version is not magnetic.

## FEATURES

- Compact design
- Wide range of models available
- Standard magnetic
- High temperature (double acting and non magnetic)

## SPECIFICATIONS

Type of construction	Compact profile
Operation	Single and double acting
Materials	AL body and end blocks – rolled stainless steel, AISI 303 rod - AL piston rod, PU seals or FKM seals for high temperatures (140°C)
Brackets	Flange, feet, trunnion
Operating temperature	0°C to 80°C (with dry air -20°C)
Operating pressure	1 to 10 bar (double acting) 2 to 10 bar (single acting)



### SERIES 31

12 – 32 mm

2530

PART NUMBER	BORE	STROKE	PRICE
Z31F2A012A005	12 mm	5 mm	£43.72
Z31F2A012A010	12 mm	10 mm	£43.97
Z31F2A012A015	12 mm	15 mm	£44.20
Z31F2A012A020	12 mm	20 mm	£44.42
Z31F2A012A025	12 mm	25 mm	£44.68
Z31F2A012A030	12 mm	30 mm	£44.91
Z31F2A012A040	12 mm	40 mm	£45.30
Z31F2A016A005	16 mm	5 mm	£44.91
Z31F2A016A010	16 mm	10 mm	£45.13
Z31F2A016A015	16 mm	15 mm	£45.39
Z31F2A016A020	16 mm	20 mm	£45.63
Z31F2A016A025	16 mm	25 mm	£45.87
Z31F2A016A030	16 mm	30 mm	£46.00
Z31F2A016A040	16 mm	40 mm	£46.00
Z31F2A020A005	20 mm	5 mm	£48.60
Z31F2A020A010	20 mm	10 mm	£48.60
Z31F2A020A015	20 mm	15 mm	£49.00
Z31F2A020A020	20 mm	20 mm	£49.40
Z31F2A020A025	20 mm	25 mm	£49.69
Z31F2A020A030	20 mm	30 mm	£50.08
Z31F2A020A040	20 mm	40 mm	£50.92
Z31F2A025A005	25 mm	5 mm	£51.58
Z31F2A025A010	25 mm	10 mm	£70.96
Z31F2A025A015	25 mm	15 mm	£52.47
Z31F2A025A020	25 mm	20 mm	£52.87
Z31F2A025A025	25 mm	25 mm	£53.22
Z31F2A025A030	25 mm	30 mm	£53.74
Z31F2A025A040	25 mm	40 mm	£54.58
Z31F2A032A005	32 mm	5 mm	£55.91
Z31F2A032A010	32 mm	10 mm	£56.57
Z31F2A032A015	32 mm	15 mm	£57.18
Z31F2A032A020	32 mm	20 mm	£57.81
Z31F2A032A025	32 mm	25 mm	£58.45
Z31F2A032A030	32 mm	30 mm	£59.05
Z31F2A032A040	32 mm	40 mm	£60.30

### SERIES 31

40 – 100 mm

2530

PART NUMBER	BORE	STROKE	PRICE
Z31F2A040A005	40 mm	5 mm	£72.22
Z31F2A040A010	40 mm	10 mm	£73.40
Z31F2A040A015	40 mm	15 mm	£74.48
Z31F2A040A020	40 mm	20 mm	£75.71
Z31F2A040A025	40 mm	25 mm	£76.76
Z31F2A040A030	40 mm	30 mm	£77.97
Z31F2A040A040	40 mm	40 mm	£80.23
Z31F2A040A050	40 mm	50 mm	£82.55
Z31F2A050A010	50 mm	10 mm	£87.19
Z31F2A050A015	50 mm	15 mm	£87.19
Z31F2A050A020	50 mm	20 mm	£88.51
Z31F2A050A025	50 mm	25 mm	£89.83
Z31F2A050A030	50 mm	30 mm	£91.20
Z31F2A050A040	50 mm	40 mm	£93.86
Z31F2A050A050	50 mm	50 mm	£96.50
Z31F2A063A010	63 mm	10 mm	£103.91
Z31F2A063A015	63 mm	15 mm	£105.75
Z31F2A063A020	63 mm	20 mm	£107.63
Z31F2A063A025	63 mm	25 mm	£109.52
Z31F2A063A030	63 mm	30 mm	£111.33
Z31F2A063A040	63 mm	40 mm	£115.00
Z31F2A063A050	63 mm	50 mm	£118.79
Z31F2A080A010	80 mm	10 mm	£130.57
Z31F2A080A015	80 mm	15 mm	£133.19
Z31F2A080A020	80 mm	20 mm	£135.87
Z31F2A080A025	80 mm	25 mm	£138.43
Z31F2A080A030	80 mm	30 mm	£141.14
Z31F2A080A040	80 mm	40 mm	£146.41
Z31F2A080A050	80 mm	50 mm	£151.67
Z31F2A100A010	100 mm	10 mm	£197.77
Z31F2A100A015	100 mm	15 mm	£165.78
Z31F2A100A020	100 mm	20 mm	£169.23
Z31F2A100A025	100 mm	25 mm	£172.77
Z31F2A100A030	100 mm	30 mm	£176.24
Z31F2A100A040	100 mm	40 mm	£183.15
Z31F2A100A050	100 mm	50 mm	£190.17

## DESCRIPTION

A compact actuator in compliance with ISO 21287. The optimised profile body gives a reduction of weight and dimensions, in compliance with the ISO standard. Suitable for the automotive industry, food & packaging, and general automation.

## AVAILABLE UPON REQUEST

- Single ducting
- Through rod
- Guided cylinder (anti-rotational)
- Male piston rod thread

## SPECIFICATIONS

Type of construction	Compact profile
Operation	Magnetic, double acting
Materials	Anodised aluminium extrusion cylinder barrel. Cast aluminium end blocks. Polyurethane seals. Stainless steel piston rod. Zinc plated steel piston rod lock nut.
Cushioning	End of stroke buffers
Operating pressure	1 to 10 bar
Operating temperature	0°C to 80°C (with dry air -20°C to +80°C)
Media	Clean air, without lubrication
Speed	10 to 1000 mm/sec (without load)



**SERIES 32**  
20 – 40 mm BORE

2530



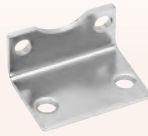
**SERIES 32**  
50 – 100 mm BORE

2530

PART NUMBER	BORE	STROKE	PRICE
Z32M2A20005	20 mm	5 mm	£46.73
Z32M2A20010	20 mm	10 mm	£46.73
Z32M2A20015	20 mm	15 mm	£47.09
Z32M2A20020	20 mm	20 mm	£47.47
Z32M2A20025	20 mm	25 mm	£47.79
Z32M2A20030	20 mm	30 mm	£48.20
Z32M2A20040	20 mm	40 mm	£48.96
Z32M2A20050	20 mm	50 mm	£49.63
Z32M2A25005	25 mm	5 mm	£49.63
Z32M2A25010	25 mm	10 mm	£50.02
Z32M2A25015	25 mm	15 mm	£50.39
Z32M2A25020	25 mm	20 mm	£50.75
Z32M2A25025	25 mm	25 mm	£51.13
Z32M2A25030	25 mm	30 mm	£51.50
Z32M2A25040	25 mm	40 mm	£52.60
Z32M2A25050	25 mm	50 mm	£53.37
Z32M2A32005	32 mm	5 mm	£53.73
Z32M2A32010	32 mm	10 mm	£54.48
Z32M2A32015	32 mm	15 mm	£54.84
Z32M2A32020	32 mm	20 mm	£55.56
Z32M2A32025	32 mm	25 mm	£55.93
Z32M2A32030	32 mm	30 mm	£57.04
Z32M2A32040	32 mm	40 mm	£58.10
Z32M2A32050	32 mm	50 mm	£59.27
Z32M2A40005	40 mm	5 mm	£69.18
Z32M2A40010	40 mm	10 mm	£69.22
Z32M2A40015	40 mm	15 mm	£71.74
Z32M2A40020	40 mm	20 mm	£72.85
Z32M2A40025	40 mm	25 mm	£73.60
Z32M2A40030	40 mm	30 mm	£75.06
Z32M2A40040	40 mm	40 mm	£77.26
Z32M2A40050	40 mm	50 mm	£79.43

PART NUMBER	BORE	STROKE	PRICE
Z32M2A50010	50 mm	10 mm	£82.37
Z32M2A50015	50 mm	15 mm	£83.84
Z32M2A50020	50 mm	20 mm	£84.59
Z32M2A50025	50 mm	25 mm	£86.07
Z32M2A50030	50 mm	30 mm	£87.56
Z32M2A50040	50 mm	40 mm	£90.51
Z32M2A50050	50 mm	50 mm	£93.48
Z32M2A63010	63 mm	10 mm	£100.09
Z32M2A63015	63 mm	15 mm	£101.55
Z32M2A63020	63 mm	20 mm	£103.74
Z32M2A63025	63 mm	25 mm	£105.22
Z32M2A63030	63 mm	30 mm	£106.66
Z32M2A63040	63 mm	40 mm	£110.36
Z32M2A63050	63 mm	50 mm	£114.80
Z32M2A80010	80 mm	10 mm	£125.80
Z32M2A80015	80 mm	15 mm	£128.02
Z32M2A80020	80 mm	20 mm	£130.97
Z32M2A80025	80 mm	25 mm	£133.19
Z32M2A80030	80 mm	30 mm	£135.37
Z32M2A80040	80 mm	40 mm	£141.25
Z32M2A80050	80 mm	50 mm	£146.39
Z32M2A10010	100 mm	10 mm	£155.99
Z32M2A10015	100 mm	15 mm	£159.65
Z32M2A10020	100 mm	20 mm	£162.59
Z32M2A10025	100 mm	25 mm	£167.00
Z32M2A10030	100 mm	30 mm	£169.93
Z32M2A10040	100 mm	40 mm	£176.56
Z32M2A10050	100 mm	50 mm	£183.18

## SERIES 32 CYLINDER ACCESSORIES



**FOOT MOUNTS – PAIR**  
SERIES 32

2530

PART NUMBER	CYLINDER BORE	PRICE
ZB-32-20	20 mm	£3.03
ZB-31-25	25 mm	£3.20
ZB-41-32	32 mm	£7.82
ZB-41-40	40 mm	£8.96
ZB-41-50	50 mm	£9.96
ZB-41-63	63 mm	£12.65
ZB-41-80	80 mm	£15.18
ZB-41-100	100 mm	£22.31



**90° SWIVEL TRUNNION**  
SERIES 32

2530

PART NUMBER	CYLINDER BORE	PRICE
ZZC-32	32 mm	£13.29
ZZC-40	40 mm	£18.54
ZZC-50	50 mm	£19.88
ZZC-63	63 mm	£28.54
ZZC-80	80 mm	£29.79
ZZC-100	100 mm	£45.63



**FEMALE REAR TRUNNION**  
SERIES 61

2530

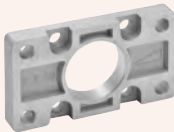
PART NUMBER	CYLINDER BORE	PRICE
ZC-41-32	32 mm	£10.15
ZC-41-40	40 mm	£11.42
ZC-41-50	50 mm	£13.89
ZCH-41-63	63 mm	£16.62
ZCH-41-80	80 mm	£21.70
ZCH-41-100	100 mm	£30.40



**CLEVIS PIN**  
SERIES 32

2530

PART NUMBER	CYLINDER BORE	PRICE
ZS-32	32 mm	£2.87
ZS-40	40 mm	£3.39
ZS-50	50 mm	£3.51
ZS-63	63 mm	£4.54
ZS-80	80 mm	£5.19
ZS-100	100 mm	£6.07



**REAR AND FRONT FLANGE**  
SERIES 32

2530

PART NUMBER	CYLINDER BORE	PRICE
ZDE-32-20	20 mm	£17.76
ZDE-32-25	25 mm	£18.54
ZDE-41-32	32 mm	£8.96
ZDE-41-40	40 mm	£9.84
ZDE-41-50	50 mm	£12.04
ZDE-41-63	63 mm	£14.28
ZDE-41-80	80 mm	£20.55
ZDE-41-100	100 mm	£26.85



**ROD FORK END**  
SERIES 32

2530

PART NUMBER	CYLINDER BORE	PRICE
ZG-20	16 mm	£3.57
ZG-25-32	20 – 40 mm	£2.99
ZG-40	50 – 63 mm	£4.61
ZG-50-63	80 mm	£9.98
ZG-80-100	80 – 100 mm	£17.79



**90° SWIVEL COMBINATION**  
SERIES 32

2530

PART NUMBER	CYLINDER BORE	PRICE
ZL-32-20	20 mm	£15.10
ZL-32-25	25 mm	£16.27
ZL-41-32	32 mm	£10.15
ZL-41-40	40 mm	£11.42
ZL-41-50	50 mm	£15.18
ZL-41-63	63 mm	£17.79
ZL-41-80	80 mm	£22.82
ZL-41-100	100 mm	£32.52

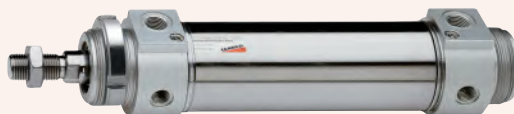
## 42 Series cylinders

Overview

### SINGLE AND DOUBLE ACTING, MAGNETIC, CUSHIONED

ø32 mm, 40 mm, 50 mm, 63 mm

- Perfect alignment
- Different mounting options



### DESCRIPTION

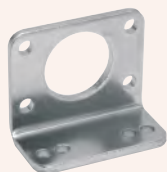
Series 42 cylinders have been designed without tie rods to assure an extremely clean design. Stainless steel has been used for the tube and the rod, while the end cover is made of anodised aluminium. These cylinders are normally equipped with adjustable end-stroke cushioning and mechanical cushioning in order to make the impact of the piston less noisy as it reaches the end of the stroke.

### GENERAL DATA

<b>Construction type</b>	Compact - flanged
<b>Operation</b>	Single or double acting
<b>Materials</b>	End-blocks = AL Tube = Stainless steel AISI 304 Rod = Stainless steel AISI 420B
<b>Mounting type</b>	Front flange, rear flange, feet, front and rear trunnion, threaded pins
<b>Strokes min-max</b>	10 – 1000 mm
<b>Operating pressure</b>	1 to 10 bar
<b>Operating temperature</b>	0°C to +80°C (with dry air -20°C)

## 42 Series accessories

Overview



• Foot Mount Pair



• Trunnion



• Nose Nut



• Bracket Pair Threaded Pins



## DESCRIPTION

The Series 45 Guide Units are available in three different models, depending on the applicable loads.

## SPECIFICATIONS

Type of construction	U and H
Materials	Anodised aluminium body. Stainless steel and hardened steel rods. Flexible stainless steel coupling. Anodised aluminium plate.
Operating temperature	0°C to 80°C (with dry air -20°C to +80°C)
Bore	ø32 mm, ø40 mm, ø50 mm, ø63 mm
Media	UT and HT without lubrication, HB requires lubrication



2530



2530

## SELF LUBRICATING SERIES UT

PART NUMBER	BORE	STROKE	PRICE
Z45UT020050	20 mm	50 mm	£196.69
Z45UT020100	20 mm	100 mm	£197.98
Z45UT020160	20 mm	160 mm	£199.92
Z45UT020200	20 mm	200 mm	£201.20
Z45UT025050	25 mm	50 mm	£196.69
Z45UT025100	25 mm	100 mm	£197.98
Z45UT025160	25 mm	160 mm	£199.92
Z45UT025200	25 mm	200 mm	£201.20
Z45UT032050	32 mm	50 mm	£196.69
Z45UT032100	32 mm	100 mm	£198.61
Z45UT032160	32 mm	160 mm	£200.59
Z45UT032200	32 mm	200 mm	£202.50
Z45UT040050	40 mm	50 mm	£221.33
Z45UT040100	40 mm	100 mm	£223.29
Z45UT040160	40 mm	160 mm	£225.24
Z45UT040200	40 mm	200 mm	£226.57
Z45UT050050	50 mm	50 mm	£246.00
Z45UT050100	50 mm	100 mm	£248.56
Z45UT050160	50 mm	160 mm	£251.20
Z45UT050200	50 mm	200 mm	£253.15
Z45UT063050	63 mm	50 mm	£294.68
Z45UT063100	63 mm	100 mm	£297.24
Z45UT063160	63 mm	160 mm	£299.87
Z45UT063200	63 mm	200 mm	£301.78
Z45UT080050	80 mm	50 mm	£392.64
Z45UT080100	80 mm	100 mm	£395.88
Z45UT080160	80 mm	160 mm	£399.15
Z45UT080200	80 mm	200 mm	£401.72
Z45UT100050	100 mm	50 mm	£441.30
Z45UT100100	100 mm	100 mm	£444.97
Z45UT100160	100 mm	160 mm	£447.80
Z45UT100200	100 mm	200 mm	£450.39

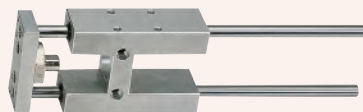
## SERIES HT

Z45HT020050	20 mm	50 mm	£210.92
Z45HT020100	20 mm	100 mm	£212.92
Z45HT020160	20 mm	160 mm	£214.86
Z45HT020200	20 mm	200 mm	£215.51
Z45HT025050	25 mm	50 mm	£210.92
Z45HT025100	25 mm	100 mm	£212.92
Z45HT025160	25 mm	160 mm	£214.86
Z45HT025200	25 mm	200 mm	£215.51
Z45HT032050	32 mm	50 mm	£211.59
Z45HT032100	32 mm	100 mm	£213.53
Z45HT032160	32 mm	160 mm	£215.51
Z45HT032200	32 mm	200 mm	£216.80
Z45HT040050	40 mm	50 mm	£235.65
Z45HT040100	40 mm	100 mm	£238.23
Z45HT040160	40 mm	160 mm	£241.44
Z45HT040200	40 mm	200 mm	£243.40

## SELF LUBRICATING SERIES HT – continued

PART NUMBER	BORE	STROKE	PRICE
Z45HT050050	50 mm	50 mm	£283.00
Z45HT050100	50 mm	100 mm	£285.58
Z45HT050160	50 mm	160 mm	£289.47
Z45HT050200	50 mm	200 mm	£292.06
Z45HT063050	63 mm	50 mm	£338.17
Z45HT063100	63 mm	100 mm	£341.37
Z45HT063160	63 mm	160 mm	£344.63
Z45HT063200	63 mm	200 mm	£347.24
Z45HT080050	80 mm	50 mm	£496.42
Z45HT080100	80 mm	100 mm	£500.35
Z45HT080160	80 mm	160 mm	£519.80
Z45HT080200	80 mm	200 mm	£519.80
Z45HT100050	100 mm	50 mm	£634.48
Z45HT100100	100 mm	100 mm	£620.42
Z45HT100160	100 mm	160 mm	£642.16
Z45HT100200	100 mm	200 mm	£646.40

## BALL GUIDE UNIT SERIES HB



2530

PART NUMBER	BORE	STROKE	PRICE
Z45HB020050	20 mm	50 mm	£316.08
Z45HB020100	20 mm	100 mm	£321.91
Z45HB020160	20 mm	160 mm	£329.04
Z45HB020200	20 mm	200 mm	£333.61
Z45HB025050	25 mm	50 mm	£316.08
Z45HB025100	25 mm	100 mm	£321.91
Z45HB025160	25 mm	160 mm	£329.04
Z45HB025200	25 mm	200 mm	£333.61
Z45HB032050	32 mm	50 mm	£305.04
Z45HB032100	32 mm	100 mm	£312.15
Z45HB032160	32 mm	160 mm	£320.60
Z45HB032200	32 mm	200 mm	£326.45
Z45HB040050	40 mm	50 mm	£329.69
Z45HB040100	40 mm	100 mm	£339.45
Z45HB040160	40 mm	160 mm	£351.10
Z45HB040200	40 mm	200 mm	£358.90
Z45HB050050	50 mm	50 mm	£389.39
Z45HB050100	50 mm	100 mm	£401.72
Z45HB050160	50 mm	160 mm	£416.67
Z45HB050200	50 mm	200 mm	£426.41
Z45HB063050	63 mm	50 mm	£457.49
Z45HB063100	63 mm	100 mm	£469.84
Z45HB063160	63 mm	160 mm	£484.82
Z45HB063200	63 mm	200 mm	£494.52
Z45HB080050	80 mm	50 mm	£645.09
Z45HB080100	80 mm	100 mm	£659.95
Z45HB080160	80 mm	160 mm	£677.40
Z45HB080200	80 mm	200 mm	£689.20
Z45HB100050	100 mm	50 mm	£780.19
Z45HB100100	100 mm	100 mm	£794.94
Z45HB100160	100 mm	160 mm	£812.87
Z45HB100200	100 mm	200 mm	£824.11

## DESCRIPTION

A permanent magnet is assembled on the piston, allowing the position to be detected by means of proximity switches positioned in grooves located on three sides of the cylinder's profile. The cylinder is equipped with an end stroke cushioning, which can be regulated by means of a screw located on each end cover of the cylinder.

## AVAILABLE UPON REQUEST

Carriage options:

- With slide bearing
- With roller bearing (only  $\varnothing 25 - 32 - 40$ )

Air Supply:

- From one side only

## SPECIFICATIONS

Type of construction	Rodless with integral carriage
Operation	Double acting, magnetic
Materials	Aluminium body, end covers, piston and barrel. Polyurethane and NBR seals
Cushioning	Adjustable pneumatic cushioning
Operating pressure	1 to 8 bar
Operating temperature	0° to 50°C (with dry air -10°C to +70°C)
Media	Clean air, without lubrication
Speed	10 to 1000 mm/sec (without load)

## CYLINDERS



### SERIES 52

2530

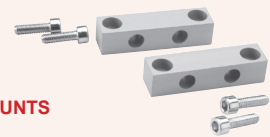
PART NUMBER	BORE	STROKE	PRICE
Z52M2P25A	25 mm	Zero	POA
Z52M2P32A	32 mm	Zero	POA
Z52M2P40A	40 mm	Zero	POA

### PRICE FOR EVERY 100 MM OF STROKE ADDED TO ABOVE CYLINDER PRICES

2530

PART NUMBER	BORE	STROKE	PRICE
Z52-25	25 mm	per 100 mm	£17.25
Z52-32	32 mm	per 100 mm	£19.41
Z52-40	40 mm	per 100 mm	£32.36

## ACCESSORIES



### INTERMEDIATE FOOT MOUNTS

#### SERIES 52

2530

PART NUMBER	CYLINDER BORE	PRICE
ZB-52-25	25 mm	£26.07
ZB-52-32	32 mm	£28.40
ZB-52-40	40 mm	£30.24
ZB-52-50	50 mm	£35.77
ZB-52-63	63 mm	£58.35



### INTERMEDIATE BRACKET FOR USE WITH BH INTERMEDIATE BRACKET

2530

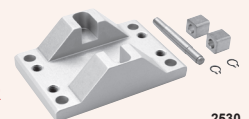
PART NUMBER	CYLINDER BORE	PRICE
ZBA-52-25	25 mm	£36.43
ZBA-52-32	32 mm	£38.89
ZBA-52-40	40 mm	£40.54



### INTERMEDIATE BRACKET SERIES 52

2530

PART NUMBER	CYLINDER BORE	PRICE
ZBH-52-25	25 mm	£67.83
ZBH-52-32	32 mm	£71.84
ZBH-52-40	40 mm	£75.98
ZBH-52-63	63 mm	£126.78



### SELF COMPENSATING ADAPTOR SERIES 52

2530

PART NUMBER	CYLINDER BORE	PRICE
ZCF-52-2532	25 – 32 mm	£149.09
ZCF-52-40	40 mm	£172.47

## DESCRIPTION

### MAGNETIC DIN / ISO 15552

The Series 61 has been designed to comply with the dimensions laid down in the DIN / ISO 15552 standards. The extruded aluminium tube, with improved aesthetics, has two grooves (on three sides), where the proximity switch Model SKR can be directly mounted. This enables the same cylinder dimensions to be retained. Four tie rods, located inside the tube, make the mounting of the end blocks extremely secure.

### SPECIFICATIONS

Type of construction	With tie rods
Operation	Double acting, magnetic
Materials	Aluminium end blocks, rolled stainless steel rod, anodised profile aluminium tube, NBR seals
Operating pressure	1 to 10 bar
Operating temperature	0°C to 80°C (with dry air -20°C)
Bore	ø32 mm, ø40 mm, ø50 mm, ø63 mm, ø80 mm, ø100 mm
Mounting	With tie rod, front flange, rear flange, feet, front and rear trunnion, swivel combination



## CYLINDERS

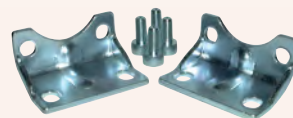


**SERIES 61**

2530

PART NUMBER	BORE	STROKE	PRICE
Z61032A025	32 mm	25 mm	£73.79
Z61032A050	32 mm	50 mm	£75.43
Z61032A075	32 mm	75 mm	£76.89
Z61032A080	32 mm	80 mm	£77.29
Z61032A100	32 mm	100 mm	£78.99
Z61040A025	40 mm	25 mm	£85.32
Z61040A050	40 mm	50 mm	£87.58
Z61040A075	40 mm	75 mm	£89.72
Z61040A080	40 mm	80 mm	£90.38
Z61040A100	40 mm	100 mm	£92.20
Z61050A025	50 mm	25 mm	£106.91
Z61050A050	50 mm	50 mm	£107.62
Z61050A075	50 mm	75 mm	£110.91
Z61050A080	50 mm	80 mm	£111.34
Z61050A100	50 mm	100 mm	£114.14
Z61063A025	63 mm	25 mm	£125.50
Z61063A050	63 mm	50 mm	£129.14
Z61063A075	63 mm	75 mm	£132.76
Z61063A080	63 mm	80 mm	£133.59
Z61063A100	63 mm	100 mm	£136.52
Z61080A025	80 mm	25 mm	£172.25
Z61080A050	80 mm	50 mm	£177.14
Z61080A075	80 mm	75 mm	£183.10
Z61080A080	80 mm	80 mm	£183.31
Z61080A100	80 mm	100 mm	£187.12
Z61100A025	100 mm	25 mm	£216.45
Z61100A050	100 mm	50 mm	£222.29
Z61100A075	100 mm	75 mm	£227.06
Z61100A080	100 mm	80 mm	£229.24
Z61100A100	100 mm	100 mm	£233.68

## ACCESSORIES



### FEET

#### SERIES 61

2530

PART NUMBER	CYLINDER BORE	PRICE
ZB-41-32	32 mm	£7.82
ZB-41-40	40 mm	£8.96
ZB-41-50	50 mm	£9.96
ZB-41-63	63 mm	£12.65
ZB-41-80	80 mm	£15.18
ZB-41-100	100 mm	£22.31



### FEMALE REAR TRUNNION

#### SERIES 61

2530

PART NUMBER	CYLINDER BORE	PRICE
ZC-41-32	32 mm	£10.15
ZC-41-40	40 mm	£11.42
ZC-41-50	50 mm	£13.89
ZCH-41-63	63 mm	£16.62
ZCH-41-80	80 mm	£21.70
ZCH-41-100	100 mm	£30.40



### FEMALE FRONT TRUNNION

#### SERIES 61

2530

PART NUMBER	CYLINDER BORE	PRICE
ZH-41-32	32 mm	£10.15
ZH-41-40	40 mm	£11.42
ZH-41-50	50 mm	£13.87
ZCH-41-63	63 mm	£16.62
ZCH-41-80	80 mm	£21.70
ZCH-41-100	100 mm	£30.40



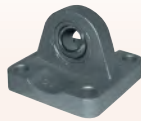
### MALE REAR TRUNNION

#### SERIES 61

2530

PART NUMBER	CYLINDER BORE	PRICE
ZL-41-32	32 mm	£10.15
ZL-41-40	40 mm	£11.42
ZL-41-50	50 mm	£15.18
ZL-41-63	63 mm	£17.79
ZL-41-80	80 mm	£22.82
ZL-41-100	100 mm	£32.52

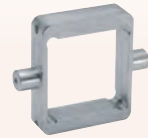
# SERIES 61 CYLINDER ACCESSORIES



**TRUNNION BALL JOINT  
SERIES 61**

2530

PART NUMBER	CYLINDER BORE	PRICE
ZR-41-32	32 mm	£22.89
ZR-41-40	40 mm	£23.97
ZR-41-50	50 mm	£26.24
ZR-41-63	63 mm	£34.49
ZR-41-80	80 mm	£41.02
ZR-41-100	100 mm	£55.38



**CENTRE TRUNNION  
SERIES 61**

2530

PART NUMBER	CYLINDER BORE	PRICE
ZF-61-32	32 mm	£66.07
ZF-61-40	40 mm	£71.80
ZF-61-50	50 mm	£83.36
ZF-61-63	63 mm	£98.80
ZF-61-80	80 mm	£120.91
ZF-61-100	100 mm	£137.33



**FORK ROD END  
SERIES 61**

2530

PART NUMBER	CYLINDER BORE	PRICE
ZG-25-32	32 mm	£2.99
ZG-40	40 mm	£4.61
ZG-50-63	50 – 63 mm	£9.98
ZG-80-100	80 – 100 mm	£17.79



**COUNTER BRACKET  
SERIES 61**

2530

PART NUMBER	CYLINDER BORE	PRICE
ZBF-32	32 mm	£33.39
ZBF-40-50	40 – 50 mm	£41.76
ZBF-63-80	63 – 80 mm	£49.78
ZBF-100-125	100 – 125 mm	£60.62



**MAGNETIC PROXIMITY SWITCH  
SERIES 61**

2530

PART NUMBER	DESCRIPTION	PRICE
ZSKR2C01200	5-130V AC/DC T slot	£25.58



**SPHERICAL BEARING ROD EYE  
SERIES 61**

2530

PART NUMBER	CYLINDER BORE	PRICE
ZGA-32	32 mm	£18.69
ZGA-40	40 mm	£22.11
ZGA-50-63	50 – 63 mm	£46.94
ZGA-80-100	80 – 100 mm	£63.21



**FORK ROD END  
SERIES 61**

2530

PART NUMBER	CYLINDER BORE	PRICE
ZGY-32	32 mm	£20.03
ZGY-40	40 mm	£26.32
ZGY-50-63	50 – 63 mm	£40.52
ZGY-80-100	80 – 100 mm	£60.39



**TRUNNION PIN  
SERIES 61**

2530

PART NUMBER	CYLINDER BORE	PRICE
ZS-32	32 mm	£2.87
ZS-40	40 mm	£3.39
ZS-50	50 mm	£3.51
ZS-63	63 mm	£4.54
ZS-80	80 mm	£5.19
ZS-100	100 mm	£6.07



**FRONT AND REAR FLANGE  
SERIES 61**

2530

PART NUMBER	CYLINDER BORE	PRICE
ZDE-41-32	32 mm	£8.96
ZDE-41-40	40 mm	£9.84
ZDE-41-50	50 mm	£12.04
ZDE-41-63	63 mm	£14.28
ZDE-41-80	80 mm	£20.55
ZDE-41-100	100 mm	£26.85



**LOCKING NUT  
SERIES 61**

2530

PART NUMBER	CYLINDER BORE	PRICE
ZU-25-32	25 – 32 mm	£0.45
ZU-40	40 mm	£0.68
ZU-50-63	50 – 63 mm	£1.08
ZU-80-100	80 – 100 mm	£1.61

## 69 Series cylinders

Overview

### MALE & FEMALE PINION

Series 69:  $\varnothing$ 32 mm, 40 mm, 50 mm, 63 mm, 80 mm, 100 mm, 125 mm (magnetic and cushioned)

Rotational angles: 90°, 180°, 270° and 360°

- Male or female pinion
- Clean design



### DESCRIPTION

The rotary cylinders of the 69 Series are available in seven different bores (from 32 mm to 125 mm) and can satisfy a large range of operational requirements. As a result of their design and the materials used, these cylinders can be used in extreme conditions with optimum results.

Through an adjustment screw, it is possible to recover part of the play between pinion and rack. There is a screw on the heads, which allows rotation to be adjusted by  $\pm 5^\circ$ .

### GENERAL DATA

<b>Construction type</b>	With internal tie rods
<b>Operation</b>	Double acting
<b>Materials</b>	End block / tube / body = AL Rack = steel Rack guide shoe = acetal resin Pinion = hardened steel Seals = NBR
<b>Mounting type</b>	Threaded holes in the central body by means of Series 60 brackets
<b>Bore</b>	$\varnothing$ 32, 40, 50, 63, 80, 100, 125
<b>Operating pressure</b>	1 to 10 bar
<b>Operating temperature</b>	0°C to +80°C (with dry air -20°C)
<b>Fluid</b>	Clean air, without lubrication

## 90 Series cylinders

Overview



### SINGLE AND DOUBLE ACTING

Series 90:  $\varnothing$ 32 mm, 40 mm, 50 mm, 63 mm, 80 mm, 100 mm, 125 mm (magnetic and cushioned)

- DIN/ISO 6431
- Clean design
- Stainless steel AISI 316



### DESCRIPTION

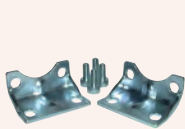
Stainless steel cylinders Series 90  $\varnothing$ 32, 40, 50, 63, 80, 100 and 125 have been designed to comply with the sizes of standard DIN/ISO 6431. These cylinders are suitable for use in harsh environmental conditions, as in the offshore, naval, pharmaceutical, nuclear and food industries.

### GENERAL DATA

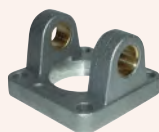
<b>Construction type</b>	Double acting piston cylinder with tie rods Magnetic as standard
<b>Operation</b>	Single or double acting
<b>Materials</b>	End block, tube, tie rods and rod = stain Less steel AISI 316 (SS 2343); seals = NBR
<b>Mounting type</b>	Front and rear flange – feet front and rear bracket - swivel combination
<b>Strokes min-max</b>	25 – 800 mm
<b>Operating pressure</b>	1 to 10 bar
<b>Operating temperature</b>	0°C to +80°C (with dry air -20°C to +80°C)
<b>Media</b>	Clean air, without lubrication
<b>Speed</b>	10 to 1000 mm/sec (without load)

## 90 Series accessories

Overview



• Foot Mount



• Female Rear Trunnion Bracket



• Front / Rear Flange Mount



• Rod Fork End



• Swivel Ball Joint



• Piston Rod Lock Nut



• 90° Male Trunnion



• Male Rear Trunnion



• Clevis Pin

## 94/95 Series cylinders

Overview

### SINGLE AND DOUBLE ACTING

Series 94:  $\varnothing 16$  mm, 20 mm, 25 mm (magnetic)  
 Series 95:  $\varnothing 25$  mm (magnetic and cushioned)

- ISO/DIN 6432
- Stainless steel



### DESCRIPTION

The Series 94 and 95 cylinders are suitable for use in harsh environmental conditions, as in the off-shore, naval, pharmaceutical, nuclear and food industries. Their construction enables the replacement of all seals.

### GENERAL DATA

<b>Construction type</b>	Compact end blocks secured to the tube
<b>Operation</b>	Single or double acting
<b>Materials</b>	End blocks and rod = stainless steel AISI 316, seals = NBR Series 94: tube in stainless steel AISI 304 Series 95: tube in stainless steel AISI 316
<b>Mounting type</b>	Screw - flange - feet - swivel combination
<b>Strokes min-max</b>	10 – 500 mm
<b>Operating pressure</b>	1 to 10 bar
<b>Operating temperature</b>	0°C to +80°C (with dry air -20°C to +80°C)
<b>Media</b>	Clean air, without lubrication
<b>Speed</b>	10 to 1000 mm/sec (without load)

## 94/95 Series accessories

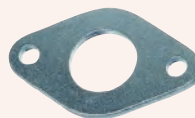
Overview



- Foot Mount Pair
- 304 Stainless steel



- Rear Trunnion Bracket
- 304 Stainless steel



- Front / Rear Flange Mount
- 304 Stainless steel



- Rod Fork End
- 303 Stainless steel



- Swivel Ball Joint
- 304 Stainless steel



- Piston Rod Lock Nut
- 304 Stainless steel



- Nose Nut
- 304 Stainless steel

# COMPACT ROD LOCK FOR ACTUATORS – SERIES RL



## DESCRIPTION

The Series RL rod locks are of compact dimensions, allowing units to be fitted on cylinders where space is limited.

## HOLDING FORCE (STATIC LOAD)

OD	20	25	32	40	50	63	80	100	125
Holding Force N.	300	400	650	1100	1600	2500	4000	6300	8800

## MINIMUM OPERATIONAL STROKES

OD	20	25	32	40	50	63	80	100	125
Extension	+46	+46	+40	+43	+57	+57	+80	+80	+125

## SPECIFICATIONS

Type of construction	Compact
Materials	Anodised aluminium housing, brass clamps, NBR seals
Operating temperature	0°C to +80°C (with dry air -20°C to +80°C)
Bore	ø20 mm, ø25 mm, ø32 mm, ø40 mm, ø50 mm, ø63 mm, ø80 mm, ø100 mm, ø125 mm



**SERIES RL  
COMPLETE WITH  
CARTRIDGE AND HOUSING**

2530



**SERIES RL  
CARTRIDGE ONLY**

2530

PART NUMBER	SERIES	CYLINDER DIA.	PRICE
ZRLC-24-20	24	20 mm	£228.42
ZRLC-24-25	24	25 mm	£228.42
ZRLC-41-32	41	32 mm	£288.48
ZRLC-41-40	41	40 mm	£330.53
ZRLC-41-50	41	50 mm	£357.57
ZRLC-41-63	41	63 mm	£486.79
ZRLC-41-80	41	80 mm	£679.07
ZRLC-41-100	41	100 mm	£799.23
ZRLC-41-125	41	125 mm	£1502.29

PART NUMBER	SERIES	CYLINDER DIA.	PRICE
ZRLB-24-20	24	20 mm	£198.10
ZRLB-24-25	24	25 mm	£198.10
ZRLB-41-32	41	32 mm	£225.40
ZRLB-41-40	41	40 mm	£239.08
ZRLB-41-50	41	50 mm	£258.67
ZRLB-41-63	41	63 mm	£353.38
ZRLB-41-80	41	80 mm	£501.20
ZRLB-41-100	41	100 mm	£728.13
ZRLB-41-125	41	125 mm	£1243.10

Seven

## MAGNETIC PROXIMITY SWITCHES

### DESCRIPTION

The SK – CSV sensors are designed to fit into the grooves provided in the profile barrel of compact, rodless and ISO cylinders or on the surface of roundline and tie rod cylinders by using mounting bands or brackets.



**SWITCHES  
REED**

2530

PART NUMBER	SLOT	WIRE	VOLTAGE	PRICE
ZSKR2C01200	T	2	3 – 130v AC/DC	£25.58
ZCSV-220	V	2	10 – 110v AC/DC	£24.31
ZSKR3C01200	T	3	5 – 30v AC/DC	£35.40
ZCSV-232	V	3	5 – 30v AC/DC	£29.84
ZSKR6C01300	T	2	5 – 230v AC/DC	£44.20

### HALL EFFECT – PNP

PART NUMBER	SLOT	WIRE	VOLTAGE	PRICE
ZSKH3C01200	T	3	10 – 30v DC	£35.40
ZCSV-332	V	3	10 – 27v DC	£39.44



**SWITCHES  
REED WITH M8 CONNECTOR**

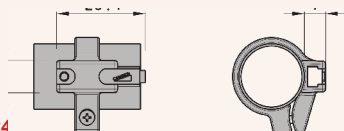
2530

PART NUMBER	SLOT	WIRE	VOLTAGE	PRICE
ZSKR2C01M8	T	2	5 – 50v AC/DC	£41.99
ZCSV-250N	V	2	10 – 110v AC/DC	£39.44
ZSKR3C01M8	T	3	5 – 30v AC/DC	£43.86
ZCSV-262	V	3	5 – 30v AC/DC	£40.92

### HALL EFFECT – PNP

PART NUMBER	SLOT	WIRE	VOLTAGE	PRICE
ZSKH3C01200	T	3	10 – 30v DC	£35.40
ZCSV-332	V	3	10 – 27v DC	£39.44

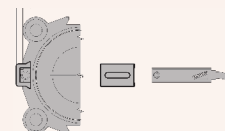
## BRACKETS – For Use With ‘T’ Slot Type Switches



**FOR SERIES 16, 24**

2530

PART NUMBER	BORE	PRICE
ZSF16	16 mm	£3.67
ZSF20	20 mm	£3.67
ZSF25	25 mm	£3.67



**FOR SERIES 50**

2530

PART NUMBER	BORE	PRICE
ZSZR12	32 – 80 mm	£2.71



# SOLENOID VALVES – SERIES A



## DESCRIPTION

The Series A solenoid valves are of the directly operated type and can be used with dry or lubricated air. They are available in the 2/2 and 3/2-way versions with normally closed or normally open operations.

Symbol key  
Fit together



2530

## STANDARD

PART NUMBER	FUNCTION	THREAD PORT	NOMINAL DIA.	PRICE
ZA321-0C2	2-Way NC	M5	1.5 mm	£33.29
ZA321-1C2	2-Way NC	1/8"	1.5 mm	£33.29
ZA321-1D2	2-Way NC	1/8"	2.0 mm	£34.25
ZA321-1E2	2-Way NC	1/8"	2.5 mm	£35.37
ZA322-0C2	2-Way NO	M5	1.8 mm	£39.73
ZA322-1C2	2-Way NO	1/8"	1.8 mm	£39.73
ZA331-0C2	3-Way NC	M5	1.5 mm	£27.81
ZA331-1C2	3-Way NC	1/8"	1.5 mm	£27.81
ZA332-0C2	3-Way NO	M5	1.5 mm	£33.16
ZA332-1C2	3-Way NO	1/8"	1.5 mm	£33.16



2530

## FOR MANIFOLD ASSEMBLY

PART NUMBER	FUNCTION	THREAD PORT	NOMINAL DIA.	PRICE
ZAA31-0C2	3-Way NC	M5	1.5 mm	£35.68
ZAA31-CC2	3-Way NC	ø4 mm	1.5 mm	£37.37



2530

## STANDARD

PART NUMBER	FUNCTION	THREAD PORT	NOMINAL DIA.	PRICE
ZA431-1C2	3-Way NC	1/8"	1.5 mm	£36.76



2530

## STANDARD

PART NUMBER	FUNCTION	INLET	OUTLET	PRICE
ZA331-3C2	3-Way NC	M5	1/8"	£29.65

## SPECIFICATIONS

Type of construction	Poppet type
Valve group	2/2, 3/2-way position. Normally Closed (NC) or Normally Open (NO)
Materials	OT58 brass body (nickel plated), other parts: stainless steel, NBR seals
Mounting	By M4 screws
Ports	M5, 1/8", cartridge ø4 mm
Operating temperature	0°C to 60°C (with dry air -20°C)
Operating pressure	Ask for details
Nominal pressure	6 bar



2530

## STANDARD WITH MANUAL OVERRIDE

PART NUMBER	FUNCTION	INLET	OUTLET	PRICE
ZA331-4C2	3-Way NC	M5	1/8"	£33.59



2530

## STANDARD

PART NUMBER	FUNCTION	O-RING	NOMINAL DIA.	PRICE
ZA631-AC2	3-Way NC	Rotatable	1.5 mm	£30.90



2530

## STANDARD

PART NUMBER	FUNCTION	O-RING	NOMINAL DIA.	PRICE
ZA531-BC2	3-Way NC	Fixed	1.5 mm	£31.18



2530

## STANDARD

PART NUMBER	FUNCTION	O-RING	NOMINAL DIA.	PRICE
ZA131-AC2	3-Way NC	Rotatable	1.5 mm	£32.01

For coils see page 358

## SOLENOID MOD. U7... / U7\*EX AND MOD. G7...

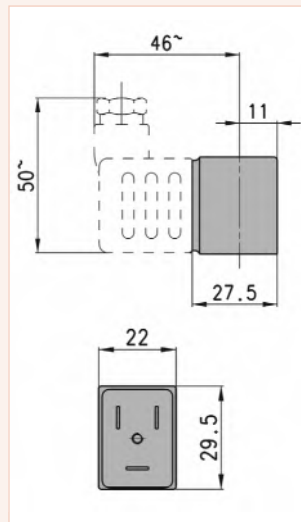
### SPECIFICATIONS

Connections	Bipolar plus earth DIN 43650 (vers. B) Mod. U7*EX marked II 3 GD Eex nA T4
Solenoid material	U7* = PET - G7* = PA

Note: to order the ATEX version, it is necessary to add EX at the end of the code.

Mod. U7K1, G7K1, U771 and G771 are to be used only with sol. valves Series A, NO in line.

Mod.	Solenoid Voltage (1)	Power Absorption (1)	Solenoid Voltage (2)	Power Absorption (2)	Solenoid Voltage (3)	Power Absorption (3)
U7H	12 V DC	3.1 W	24 V - 50/60Hz	3.5 VA		
G7H	12 V DC	3.1 W	24 V - 50/60Hz	3.5 VA		
U7K	110 V - 50/60Hz	3.8 VA	125 V - 50/60Hz	5.5 VA	72 V DC	4.8 W
U7K1	110 V - 50/60Hz	3.8 VA	125 V - 50/60Hz	5.5 VA	72 V DC	4.8 W
G7K	110 V - 50/60Hz	3.8 VA	125 V - 50/60Hz	5.5 VA	72 V DC	4.8 W
G7K1	110 V - 50/60Hz	3.8 VA	125 V - 50/60Hz	5.5 VA	72 V DC	4.8 W
U7J	230 V - 50/60Hz	3.5 VA	240 V - 50/60Hz	4 VA		
G7J	230V - 50/60Hz	3.5 VA	240 V - 50/60Hz	4 VA		
U79	48 V DC	3.1 W				
G79	48 V DC	3.1 W				
U710	110 V DC	3.2 W				
G710	110 V DC	3.2 W				
U77	24 V DC	3.1 W	48 V - 50/60Hz	3.5 VA		
U771	24 V DC	3.1 W	48 V - 50/60Hz	3.5 VA		
G77	24 V DC	3.1 W	48 V - 50/60Hz	3.5 VA		
G771	24 V DC	3.1 W	48 V - 50/60Hz	3.5 VA		
U7F	380 V - 50/60Hz	7 VA				
U72	12 V DC	5 W				
G72	12 V DC	5 W				
U73	24 V DC	5 W				
G73	24 V DC	5 W				



Seven

## 6 SERIES

### DESCRIPTION

The Series 6 solenoid valves are of the directly operated type and may be used equally well either with or without lubrication. They are available in the 2/2 and 3/2-way versions with normally closed or normally open operations.

PLEASE STATE VOLTAGE REQUIRED



2530

### BASE TYPE

#### ROTATABLE INTERFACE

PART NUMBER	FUNCTION	THREAD PORT	PRICE
Z600-450	3-Way NC	-	£49.99

#### FIXED INTERFACE

Z600-457	3-Way NC	-	£49.99
----------	----------	---	--------



2530

### BASE TYPE

PART NUMBER	FUNCTION	THREAD PORT	ORIFICE SIZE	PRICE
Z623-15E	2-Way NC	3/8"	2.5 mm	£69.15
Z623-15F	2-Way NC	3/8"	3 mm	£69.15
Z623-15G	2-Way NC	3/8"	4 mm	£69.15

Other options available upon request

### DESCRIPTION

Type of construction	Poppet type
Valve group	2/2, 3/2-way position. Normally Closed (NC) or Normally Open (NO)
Materials	Aluminium body, NBR seals, other parts stainless steel
Mounting	By M4 screws
Ports	1/8", 3/8", cartridge ø4 mm
Operating temperature	0°C to +80°C (with dry air -20°C to +60°C)
Operating pressure	Ask for details



2530

### BASE TYPE

#### THREADED BODY

PART NUMBER	FUNCTION	THREAD PORT	PRICE
Z638-150	3-Way NC	1/8"	£46.50
Z648-150	3-Way NO	1/8"	£53.63



2530

### BASE TYPE

#### FOR MANIFOLD ASSEMBLY

PART NUMBER	FUNCTION	THREAD PORT	PRICE
Z638M-101	3-Way NC	1/8"	£56.53

## EN SERIES

### DESCRIPTION

Camozzi has developed a new series of valves to be used in applications requiring a reduced space of installation and in situations where the valves need to be located as near as possible to the operating elements. The single valves can be mounted on any flat surface, allowing compact machine design, which is also enhanced by the reduced dimensions of the valve itself. Thanks to their robust aluminium bodies, the Series EN valves offer the highest reliability.

This new generation of solenoid valves is the evolution of the previous Series E, size 16 – 19 mm valve with ports threaded into the body. As this valve is completely interchangeable with Series E, part of the code is maintained, although the valve has a completely new shape and new components.



**PILOT / SPRING ACTUATED**

2530

PART NUMBER	FUNCTION	PORT SIZE	MIN. PILOT PRESSURE	PRICE
ZEN531-36	5/2	1/8"	2.5 bar	£55.20
ZEN551-36	5/2	1/4"	2.5 bar	£57.81



**PILOT ACTUATED**

2530

PART NUMBER	FUNCTION	PORT SIZE	MIN. PILOT PRESSURE	PRICE
ZEN531-33	5/2	1/8"	2 bar	£61.82
ZEN551-33	5/2	1/4"	2 bar	£65.19
ZEN631-33	5/3 CC	1/8"	3 bar	£105.75
ZEN651-33	5/3 CC	1/4"	3 bar	£110.59
ZEN731-33	5/3 CO	1/8"	3 bar	£105.75
ZEN751-33	5/3 CO	1/4"	3 bar	£110.59

### SPECIFICATIONS

Type of construction	Spool type
Valve group	5/2 (5 ports / 2 positions), 5/3 (5 ports / 3 positions). Centre Closed (CC) or Centre Open (CO)
Materials	Aluminium body, spool and bases
Mounting	On any flat surface
Ports	1/8", 1/4"
Operating temperature	0°C to 50°C
Operating pressure	See tables
Nominal flow	1/8" = 550 NI/min, 1/4" = 920 NI/min

\*Other voltage available upon request



**SOLENOID / SPRING**

**24V DC ELECTROPNEUMATICALLY ACTUATED**

2530

PART NUMBER	FUNCTION	PORT SIZE	MIN. PILOT PRESSURE	PRICE
ZE53116P13	5/2	1/8"	2.5 bar	£80.50
ZE55116P13	5/2	1/4"	2.5 bar	£83.14



**SOLENOID / SOLENOID**

**24V DC ELECTROPNEUMATICALLY ACTUATED**

2530

PART NUMBER	FUNCTION	PORT SIZE	MIN. PILOT PRESSURE	PRICE
ZE53111P13	5/2	1/8"	2 bar	£104.05
ZE55111P13	5/2	1/4"	2 bar	£116.17
ZE63111P13	5/3 CC	1/8"	3 bar	£133.30
ZE65111P13	5/3 CC	1/4"	3 bar	£143.80
ZE73111P13	5/3 CO	1/8"	3 bar	£145.64

## MANIFOLDS AND ACCESSORIES

### DESCRIPTION

The manifolds are made of extruded aluminium and have a common supply (1), valve exhaust (3 – 5) and pilot exhaust (82 – 84). All manifolds are supplied with location pins, interface seals and fixing screws.

The single sub-bases have threaded connections, including the exhaust (82 – 84) and the external pilot supply (12 – 14). Sub-bases are supplied with location pins.



2530

**MANIFOLDS FOR VALVES WITH OUTLET ON BODY**

PART NUMBER	NO. OF POSITIONS	PORTS	PRICE
ZEN531-1002	2	1/4"	£32.64
ZEN531-1003	3	1/4"	£39.52
ZEN531-1004	4	1/4"	£44.09
ZEN531-1005	5	1/4"	£49.11
ZEN531-1006	6	1/4"	£54.34
ZEN531-1008	8	1/4"	£65.38
ZEN531-1010	10	1/4"	£78.11
ZEN531-1012	12	1/4"	£90.23
ZEN551-1002	2	3/8"	£34.48
ZEN551-1003	3	3/8"	£41.48
ZEN551-1004	4	3/8"	£46.77
ZEN551-1005	5	3/8"	£52.34
ZEN551-1006	6	3/8"	£58.16
ZEN551-1008	8	3/8"	£77.36
ZEN551-1010	10	3/8"	£88.99
ZEN551-1012	12	3/8"	£110.75

### SPECIFICATIONS

Manifold construction	Machined aluminium extrusion
Sub-base construction	Diecast aluminium
Mounting	By location pins and screws



2530

**BLANKING PLATE FOR MANIFOLD**

PART NUMBER	PORT SIZE	PRICE
ZTP-EN531	16 mm	£9.47
ZTP-EN551	19 mm	£9.73



2530

**DIN PLUG FOR SERIES E53 VALVES ONLY**

PART NUMBER	DESCRIPTION	PRICE
ZKD136000B7	DIN PLUG	£2.37

Moulded connectors with LED available

## DESCRIPTION

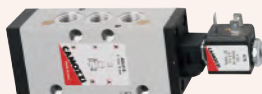
The 1/8" Series 3 solenoid valves have been designed as 3/2 and 5/2 ways. The main advantages of these solenoid valves is their small overall dimensions, which make them particularly suitable for small spaces. The Series 4 solenoid valves are a balanced spool type, and are available with various methods of activation.

## SPECIFICATIONS

Type of construction	Spool (pilot operated)
Valve group	3/2 Normally Closed (NC) or Normally Open (NO). 5/2 and 5/3-way port / position.
Materials	Aluminium body, stainless steel spool, NBR seals
Mounting	Through holes in valve body
Ports	1/8", 1/4", 1/2"
Operating temperature	0°C to 60°C (with dry air -20°C)
Operating pressure	10 bar maximum
Nominal pressure	6 bar
Minimum pilot pressure	2 bar
Nominal flow: Series 4	1/8" = 650 NI/min, 1/4" = 1250 NI/min, 1/2" = 1900 NI/min
Nominal flow: Series 3	1/8" = 500 NI/min
Class of insulation	Class H
Protection class	IP54 DIN 40050 (IP65 with DIN 43650/PG9 connector)
015 Actuation	Single solenoid, spring return (horizontal solenoids)
016 Actuation	Single solenoid, pneumatic spring return (horizontal solenoids)



### SERIES 3 & 4



2530

PART NUMBER	FUNCTION	PORT SIZE	PRICE
Z338-015-02	3/2 NC	1/8"	£65.54
Z438-015-22	3/2 NC	1/8"	£79.60
Z434-015-22	3/2 NC	1/4"	£94.87
Z348-015-02	3/2 NO	1/8"	£65.54
Z358-015-02	5/2	1/8"	£71.61
Z458-015-22	5/2	1/8"	£82.63
Z454-015-22	5/2	1/4"	£104.49
Z452-015-50*	5/2	1/2"	£250.08
Z452-016-50*	5/2	1/2"	£303.88

Supplied with coils. Please state voltage when ordering



### SERIES 3 EXTERNAL PILOT DOUBLE SOLENOID VALVES



2530

PART NUMBER	FUNCTION	PORT SIZE	PRICE
Z338DE15-02	2x 3/2 NC	1/8"	£145.34
Z348DE15-02	2x 3/2 NO	1/8"	£145.34
Z398DE15-02	3/2 NC / NO	1/8"	£145.34



### SERIES 3 DOUBLE SOLENOID VALVES



2530

PART NUMBER	FUNCTION	PORT SIZE	PRICE
Z348D015-02	2x 3/2 NO	1/8"	£133.00
Z338D015-02	2x 3/2 NC	1/8"	£133.00
Z398D015-02	3/2 NC / NO	1/8"	£133.00



### SERIES 3 CAN BE MOUNTED ON MANIFOLD



2530

PART NUMBER	FUNCTION	PORT SIZE	PRICE
Z338L-015-2	3/2 NC	1/8"	£65.54
Z348L-015-2	3/2 NO	1/8"	£65.54



### SERIES 3 EXTERNAL PILOT



2530

PART NUMBER	FUNCTION	PORT SIZE	PRICE
Z358-E15-02	5/2	1/8"	£77.73



### SERIES 4 VERTICAL SOLENOID



2530

PART NUMBER	FUNCTION	PORT SIZE	PRICE
Z454-V15-22	5/2	1/4"	£110.21
Z454-V16-22	5/2	1/4"	£119.74



**SERIES 3 & 4**

2530

PART NUMBER	FUNCTION	PORT SIZE	PRICE
Z338-011-02	3/2	1/8"	£90.31
Z438-011-22	3/2	1/8"	£120.68
Z434-011-22	3/2	1/4"	£140.85
Z358-011-02	5/2	1/8"	£97.71
Z458-011-22	5/2	1/8"	£120.68
Z454-011-22	5/2	1/4"	£140.85
Z452-011-50*	5/2	1/2"	£304.94
Z368-011-02	5/3 CC	1/8"	£156.91
Z468-011-22	5/3 CC	1/8"	£178.29
Z464-011-22	5/3 CC	1/4"	£195.21
Z378-011-02	5/3 CO	1/8"	£156.91
Z474-011-22	5/3 CO	1/4"	£195.21
Z388-011-02	5/3 C pressure	1/8"	£156.91

Supplied with coils. Please state voltage when ordering



**SERIES 3**

**EXTERNAL PILOT COMMAND**

2530

PART NUMBER	FUNCTION	PORT SIZE	PRICE
Z358-E11-02	5/2	1/8"	£109.02
Z368-E11-02	5/3 CC	1/8"	£169.21
Z378-E11-02	5/3 CO	1/8"	£169.21
Z388-E11-02	5/3 C pressure	1/8"	£173.63



**SERIES 4**  
**VERTICAL SOLENOID**

2530

PART NUMBER	FUNCTION	PORT SIZE	PRICE
Z454-V11-22	5/2	1/4"	£148.43



**SERIES 3**

**CAN BE MOUNTED ON MANIFOLD**



2530

PART NUMBER	FUNCTION	PORT SIZE	PRICE
Z338L-011-2	3/2	1/8"	£90.31

## MANIFOLDS



Basic



Terminal

**SERIES 3**  
**MODULAR**  
**MANIFOLDS**

2530

PART NUMBER	NO. OF POSITIONS	DESCRIPTION	PRICE
ZCNVL-3H2	2	Basic	£25.68
ZCNVL-3H3	3	Basic	£32.57
ZCNVL-311	1	Expansion	£23.97
ZCNVL-312	2	Expansion	£25.46
ZCNVL-313	3	Expansion	£31.69
ZCNVL-3H	-	End Terminal	£12.10

**BLANKING PLUG**  
**FOR ZCNVL MANIFOLDS**



2530

PART NUMBER	PORT SIZE	PRICE
ZTCNVL-3	1/8"	£1.36
ZTCNVL-5	1/4"	£1.48

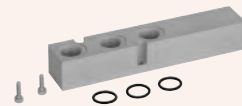
**INTERMEDIATE PLATE**  
**FOR MANIFOLDS**  
**WITH OUTLETS**



2530

PART NUMBER	PORT SIZE	PRICE
ZCNVL-3P	1/4"	£17.60

**INTERMEDIATE PLATE**  
**FOR MANIFOLDS**  
**WITH OUTLETS**



2530

PART NUMBER	PORT SIZE	PRICE
ZCNVL-3P1	1/4"	£18.88

**BLANKING PLATE**  
**FOR MANIFOLDS**  
**WITH OUTLETS**



2530

PART NUMBER	PORT SIZE	PRICE
ZCNVL-2	1/8"	£1.94
ZCNVL-3	1/4"	£2.98



**EXCLUDER**

2530

PART NUMBER	PORT SIZE	PRICE
ZCNVL-1L	ø3.2 mm	£11.01

## DESCRIPTION

### ISO 5599/1 STANDARDS

The Series 9 electropneumatically or pneumatically operated valves have been manufactured in sizes 1, 2 and 3, as recommended by ISO Standards.

They are constructed to be actuated in different ways:

- Electrical actuation spring return
- Electrical actuation and pneumatic spring return
- Electrical actuation and return
- Pneumatic actuation and spring return
- Pneumatic actuation and differential pneumatic return
- Pneumatic actuation and return

## SPECIFICATIONS

Type of construction	Spool (servo controlled)
Valve group	5/2 and 5/3-way port / position. Centre Closed (CC) or Centre Open (CO)
Materials	Aluminium body, stainless steel spool, NBR seals
Mounting	Threaded holes in sub-base
Sub-base sizes	1 = 1/4", 2 = 3/8" and 3 = 1/2"
Operating temperature	0°C to 60°C (with dry air -20°C)
Operating pressure	10 bar maximum
Nominal pressure	6 bar
Nominal flow	Size 1: 900 NI/min, Size 2: 1610 NI/min, Size 3: 3700 NI/min
Class of insulation	Class H
Protection class	IP54 DIN 40050 (IP65 with DIN 43650/PG9 connector)



### ISO 1



2530

PART NUMBER	FUNCTION	ACTUATION	PRICE
Z951-P15-23	5/2	Sol / Spring	£86.36
Z951-P11-23	5/2	Sol / Sol	£120.01
Z951-000-35	5/2	Pneu / Spring	£56.16
Z951-000-34	5/2	Pneu / Diff Pneu	£56.16
Z951-000-33	5/2	Pneu / Pneu	£56.16
Z961-P11-23	5/3 CC	Sol / Sol	£167.72
Z961-000-33	5/3 CC	Pneu / Pneu	£83.26
Z971-P11-23	5/3 CO	Sol / Sol	£167.72
Z971-000-33	5/3 CO	Pneu / Pneu	£83.26



### ISO 2



2530

PART NUMBER	FUNCTION	ACTUATION	PRICE
Z952-P15-23	5/2	Sol / Spring	£102.35
Z952-P11-23	5/2	Sol / Sol	£134.40
Z952-000-35	5/2	Pneu / Spring	£70.86
Z952-000-34	5/2	Pneu / Diff Pneu	£72.53
Z952-000-33	5/2	Pneu / Pneu	£69.01
Z962-P11-23	5/3 CC	Sol / Sol	£178.38
Z962-000-33	5/3 CC	Pneu / Pneu	£103.31
Z972-P11-23	5/3 CO	Sol / Sol	£178.38
Z972-000-33	5/3 CO	Pneu / Pneu	£103.31



### ISO 3



2530

PART NUMBER	FUNCTION	ACTUATION	PRICE
Z953-P15-23	5/2	Sol / Spring	£223.51
Z953-P11-23	5/2	Sol / Sol	£238.14
Z953-000-35	5/2	Pneu / Spring	£167.67
Z953-000-34	5/2	Pneu / Diff Pneu	£161.82
Z953-000-33	5/2	Pneu / Pneu	£161.82
Z963-P11-23	5/3 CC	Sol / Sol	£292.19
Z963-000-33	5/3 CC	Pneu / Pneu	£206.73
Z973-P11-23	5/3 CO	Sol / Sol	£292.19
Z973-000-33	5/3 CO	Pneu / Pneu	£200.12

## SINGLE SUB-BASE WITH SIDE OUTLETS



2530

PART NUMBER	INLET / EXHAUST	SIZE	PRICE
Z901-F1A	1/4"	ISO 1	£20.88
Z902-F2A	3/8"	ISO 2	£26.11
Z903-F3A	1/2"	ISO 3	£55.80

## SINGLE SUB-BASE WITH REAR OUTLETS



2530

PART NUMBER	INLET / EXHAUST	SIZE	PRICE
Z901-G1A	1/4"	ISO 1	£22.37
Z902-G2A	3/8"	ISO 2	£27.89
Z903-G3A	1/2"	ISO 3	£55.80

## MANIFOLD SUB-BASE WITH COMMON EXHAUST & INLET



2530

PART NUMBER	INLET / EXHAUST	SIZE	PRICE
Z901-C1A	1/4"	ISO 1	£22.63
Z902-C2A	3/8"	ISO 2	£28.09
Z903-C3A	1/2"	ISO 3	£80.03

## END BLOCK FOR MANIFOLD SUB-BASE



2530

PART NUMBER	INLET / EXHAUST	SIZE	PRICE
Z901-H1	1/4"	ISO 1	£26.65
Z902-H2	3/8"	ISO 2	£30.66
Z903-H3	1/2"	ISO 3	£81.86

## END BLOCK WITH FRONT OUTLET



2530

PART NUMBER	INLET / EXHAUST	SIZE	PRICE
Z901-N1	1/4"	ISO 1	£36.39
Z902-N2	3/8"	ISO 2	£47.01
Z903-N3	1/2"	ISO 3	£66.89

## MANIFOLD SUB-BASE WITH COMMON EXHAUST & INLET



2530

PART NUMBER	INLET / EXHAUST	SIZE	PRICE
Z901-N1A	1/4"	ISO 1	£31.38

## END BLOCK FOR MANIFOLD BASES



2530

PART NUMBER	INLET / EXHAUST	SIZE	PRICE
Z901-HN1	1/4"	ISO 1	£53.37

# SOLENOIDS FOR ELECTROPNEUMATICALLY OPERATED VALVES



## DESCRIPTION

The dimensions, as well as the power consumption of these solenoids, differ, so that the best possible choice can be made depending on the type of electronic or electromechanical operating system used.

**PLEASE NOTE:**  
DIN Plugs are NOT included with solenoid

● **SOLENOIDS – PET**  
**STANDARD DIN PLUG**  
11 mm



2530

PART NUMBER	VOLTAGE			PRICE
ZU7H	12V	DC	3.1W	£14.41
ZU7K	110V	AC 50/60Hz	5.5VA	£14.41
ZU7J	240V	AC 50/60Hz	4VA	£14.41
ZU79	48V	DC	3.1W	£14.41
ZU77	48V	50/60Hz	3.5VA	£14.41
ZU72	12V	DC	5W	£14.41
ZU73	24V	DC	5W	£14.41
ZU74	48V	DC	5W	£14.41
ZU76	110V	DC	5W	£14.41

● **SOLENOIDS**  
**STANDARD DIN PLUG**  
18 mm Form A



2530

PART NUMBER	VOLTAGE			PRICE
ZA8B24	24V	50/60Hz	5VA	£21.37
ZA8D110	110V	50/60Hz	5VA	£21.37
ZA8E220	220V	50/60Hz	5VA	£21.37
ZA8324	24V	DC	4W	£21.37
ZA86110	110V	DC	4W	£21.37

● **SOLENOIDS – NYLON**  
**STANDARD DIN PLUG**  
11 mm



2530

PART NUMBER	VOLTAGE			PRICE
ZG7H	12 V	DC	3.1W	£12.44
ZG7K	110 V	AC 50/60Hz	5.5VA	£12.44
ZG7J	240 V	50/60Hz	4VA	£12.44
ZG72	12 V	DC	5W	£12.44
ZG73	24 V	DC	5W	£12.44
ZG77	48 V	50/60Hz	3.5VA	£12.44

● **SOLENOIDS**  
**LATCHING COIL**  
**STANDARD PLUG**



2530

PART NUMBER	VOLTAGE		PRICE
ZG9324	24 V	DC	£47.89

● **SOLENOIDS**  
**PRE-WIRED**  
**EXPLOSION PROOF**



2530

PART NUMBER	VOLTAGE			PRICE
ZH8D110	110 V	50/60Hz	5.5VA	£128.43
ZH8E220	220 V	50/60Hz	5.5VA	£128.43
ZH8324	24 V	DC	5.5W	£128.43

Size 10.2 mm

# SOLENOID DIN CONNECTORS

## DESCRIPTION

The range of Solenoid DIN Connectors, with cable gland entry, offers flexibility and is suitable for a wide variety of applications.

## SPECIFICATIONS

Insulation group	VDE 0110 1/89 – Class C
Materials	Polyamide (glass fibre reinforced) connectors. NBR standard (form A and B) profile gasket. NBR standard (form C) flat gasket. M3 x 32 mm (form A and B), M3 x 28 mm (industrial form C), M2.5 x 28 mm (form C) screws
Voltage	Up to 250 V AC or DC unless otherwise stated
Current	10A (nominal) 16A (max) – Form A and B 6A (nominal) 10A (max) – Form C
Temperature range	-40°C to +90°C
Cable gland size	PG7 cable diameter 4 – 6 mm PG9 cable diameter 6 – 8 mm



### FORM A 18 mm PIN SPACING



PART NUMBER	TYPE (LED VOLTAGE AC/DC)	CABLE ENTRY	PRICE
ZKA2000B9	Black	PG9	£1.88
ZKA2000A9	Grey	PG9	£1.88

For use with Series 4 valves - 1/2, Series 6 and A80 coils



### INDUSTRIAL FORM B 11 mm PIN SPACING

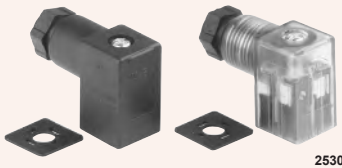


PART NUMBER	TYPE (LED VOLTAGE AC/DC)	CABLE ENTRY	PRICE
ZKB2000B9	Black	PG9	£1.88
ZKB2V54T9	Transparent (24 V LED)	PG9	£10.14
ZKB2V55T9	Transparent (115 V LED)	PG9	£10.14
ZKB2V56T9	Transparent (230 V LED)	PG9	£10.14

For use with Series A, Series 3 and 4, and ISO valves



### INDUSTRIAL FORM C 9.4 mm PIN SPACING



PART NUMBER	TYPE (LED VOLTAGE AC/DC)	CABLE ENTRY	PRICE
ZKD6000B7	Black	PG7	£2.37
ZKD6V54T7	Transparent (24 V LED)	PG7	£10.31
ZKD6V55T7	Transparent (115 V LED)	PG7	£10.31
ZKD6V56T7	Transparent (230 V LED)	PG7	£10.31

For use with Series E and Series P valves  
8 mm pin spacing available upon request



### SOLENOID CONNECTORS



PART NUMBER	DESCRIPTION	PRICE
Z121-803	With 300 mm cable	£4.87
Z121-806	With 600 mm cable	£6.84
Z121-810	With 1000 mm cable	£9.01

For use with Series K and Series E valves (size 10.5 mm)



# SOLENOID DIN CONNECTORS



## DESCRIPTION

The range of Solenoid DIN moulded cable connectors offers a fast and efficient method of connection, resulting in reduced installation time and cost.

## SPECIFICATIONS

Insulation group	VDE 0110 1/89 – Class C
Materials	TPU connectors. PVC standard cable. Integrated TPU gasket. M3 x 28 mm (form A and B), M3 x 23 mm (industrial form C), M2.5 x 23 mm (form C) screws
Voltage	Up to 250V AC or DC unless otherwise stated
Current	5A – Form A and B 3A – Form C
Temperature range	-40°C to +90°C
Standard cable - Form A & B	3 x 0.75 mm <sup>2</sup> conductors PVC H05 VVF
Form C	3 x 0.50 mm <sup>2</sup> conductors PVC H03 VVF



**FORM A**  
18 mm PIN SPACING  
DOUBLE EARTH



2530



**FORM B**  
11 mm PIN SPACING  
12 O'CLOCK EARTH



2530

PART NUMBER	TYPE (LED VOLTAGE AC/DC)	CABLE LENGTH	PRICE
ZMA11000510	Cable connector only	1 m	£6.29
ZMA11000530	Cable connector only	3 m	£8.77
ZMA61V54510	Cable connector (24 V LED)	1 m	£8.72
ZMA61V54530	Cable connector (24 V LED)	3 m	£18.53

For use with Series 4 valves - 1/2, Series 6 and A80 coils

PART NUMBER	TYPE (LED VOLTAGE AC/DC)	CABLE LENGTH	PRICE
ZMB15000510	Cable connector only	1 m	£11.75
ZMB15000530	Cable connector only	3 m	£11.75
ZMB65V54510	Cable connector (24 V LED)	1 m	£17.17
ZMB65V54530	Cable connector (24 V LED)	3 m	£18.53
ZMB65V55530	Cable connector (115 V LED)	3 m	£18.53
ZMB65V56530	Cable connector (230 V LED)	3 m	£18.53

For use with Series A, Series 3 and 4, and ISO valves



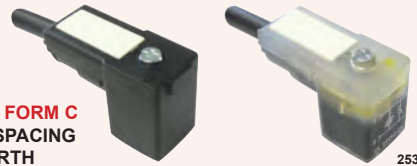
**INDUSTRIAL FORM B**  
11 mm PIN SPACING  
6 O'CLOCK EARTH



2530



**INDUSTRIAL FORM C**  
9.4 mm PIN SPACING  
DOUBLE EARTH



2530

PART NUMBER	TYPE (LED VOLTAGE AC/DC)	CABLE LENGTH	PRICE
ZMB63V55530	Cable connector (115 V LED)	3 m	£18.53

For use with Series A, Series 3 and 4, and ISO valves

PART NUMBER	TYPE (LED VOLTAGE AC/DC)	CABLE LENGTH	PRICE
ZMD14000130	Cable connector only	3 m	£10.24

For use with Series EN and Series P valves

Symbol key  
Fit together



## DESCRIPTION

The pneumatically operated Series 3 and Series 4 valves have been designed with three different methods of return. A pneumatic signal, mechanical spring or differential pneumatic return. This is due to the type of design consisting of a balanced spool, which means that it can be used for a wide range of applications.

## SPECIFICATIONS

Type of construction	Spool (servo controlled)
Valve group	3/2, 5/2 and 5/3-way position. Centre Closed (CC) or Centre Open (CO)
Materials	Aluminium body, stainless steel spool, NBR seals
Mounting	Through holes in valve body
Ports	1/8", 1/4", 1/2"
Operating temperature	0°C to 80°C (with dry air -20°C)
Operating pressure	10 bar maximum
Nominal pressure	6 bar
Minimum pilot pressure	2 bar
Nominal flow	Series 3: 1/8" = 750 NI/min Series 4: 1/8" = 650 NI/min 1/4" = 1250 NI/min, 1/2" = 1900 NI/min
Nominal diameter	1/8" = 5 mm, 1/4" = 7.5 mm, 1/2" = 12 mm



2530



2530

## PNEUMATIC / SPRING

PART NUMBER	FUNCTION	PORT SIZE	PRICE
Z338-035	3/2	1/8"	£36.17
Z338L-035	3/2	1/8"	£36.17
Z358-035	5/2	1/8"	£38.27
Z438-035	3/2	1/8"	£46.28
Z458-035	5/2	1/8"	£51.36
Z434-035	3/2	1/4"	£64.41
Z454-035	5/2	1/4"	£68.32
Z452-035	5/2	1/2"	£183.94

L – Can be mounted on manifolds

## PNEUMATIC / PNEUMATIC

PART NUMBER	FUNCTION	PORT SIZE	PRICE
Z338-033	3/2	1/8"	£40.21
Z338L-033	3/2	1/8"	£40.21
Z358-033	5/2	1/8"	£42.20
Z438-033	3/2	1/8"	£48.37
Z458-033	5/2	1/8"	£52.17
Z468-033	5/3 CC	1/8"	£87.62
Z434-033	3/2	1/4"	£64.41
Z454-033	5/2	1/4"	£68.32
Z464-033	5/3 CC	1/4"	£100.31
Z474-033	5/3 CO	1/4"	£100.31
Z452-033	5/2	1/2"	£177.89

L – Can be mounted on manifolds



2530

## PNEUMATIC / PNEUMATIC DIFFERENTIAL

PART NUMBER	FUNCTION	PORT SIZE	PRICE
Z438-034	3/2	1/8"	£54.36
Z458-034	5/2	1/8"	£54.36
Z434-034	3/2	1/4"	£66.19
Z454-034	5/2	1/4"	£70.12
Z452-034	5/2	1/2"	£177.89

## MECHANICALLY OPERATED MINI VALVES – SERIES 2



### SPECIFICATIONS

Media	Filters compressed air without lubricant. If lubricated air is used, it is recommended that ISO VG32 oil is used. Once applied, the lubrication should never be interrupted.
Materials	Aluminium valve body, NBR seals, OT58 brass poppet & plunger, stainless steel spools



2530

### PLUNGER

PART NUMBER	FUNCTION	PORT SIZE	PRICE
Z235-945	3/2	M5	£16.86
Z234-945	3/2	4 mm	£20.49

### SPECIFICATIONS

Operating temperature	0°C to 80°C
Operating pressure	2 to 8 bar
Connections	4 mm, M5
Mounting	By through-holes in valve body



2530

### PANEL MOUNTED PLUNGER

PART NUMBER	FUNCTION	PORT SIZE	PRICE
Z235-985	3/2	M5	£19.59
Z234-985	3/2	4 mm	£23.20



2530

### ROLLER LEVER

PART NUMBER	FUNCTION	PORT SIZE	PRICE
Z235-955	3/2	M5	£22.17
Z234-955	3/2	4 mm	£25.88



2530

### ONE WAY TRIP

PART NUMBER	FUNCTION	PORT SIZE	PRICE
Z235-965	3/2	M5	£24.84
Z234-965	3/2	4 mm	£28.40

## MECHANICALLY OPERATED VALVES – SERIES 1 AND 3

### SPECIFICATIONS

Media	Filtered compressed air without lubricant. If lubricated air is used, it is recommended that ISO VG32 oil is used. Once applied, the lubrication should never be interrupted.
Materials	Aluminium valve body, NBR seals, OT58 brass poppet & plunger, stainless steel spools



2530

### PLUNGER

PART NUMBER	FUNCTION	PORT SIZE	PRICE
Z338-945	3/2	1/8"	£23.19
Z358-945	5/2	1/8"	£28.28
Z138-945	3/2 NC	1/8"	£26.99
Z148-945	3/2 NO	1/8"	£31.65
Z158-945	5/2	1/8"	£49.04
Z134-945	3/2	1/4"	£44.43
Z154-945	5/2	1/4"	£82.21

### SPECIFICATIONS

Operating temperature	0°C to +60°C
Operating pressure	0 to 10 bar
Connections	1/8", 1/4"
Mounting	By through-holes in valve body



2530

### ROLLER LEVER

PART NUMBER	FUNCTION	PORT SIZE	PRICE
Z338-955	3/2	1/8"	£33.29
Z358-955	5/2	1/8"	£35.51
Z138-955	3/2	1/8"	£35.28
Z158-955	5/2	1/8"	£72.35
Z134-955	3/2	1/4"	£51.45
Z154-955	5/2	1/4"	£100.34



2530

### ROLLER LEVER ONE WAY TRIP

PART NUMBER	FUNCTION	PORT SIZE	PRICE
Z338-965	3/2	1/8"	£43.25
Z358-965	5/2	1/8"	£43.77
Z138-965	3/2	1/8"	£53.16

# MECHANICALLY OPERATED SENSOR VALVES SERIES 3 AND 4



SPECIFICATIONS	
Media	Filtered compressed air without lubricant. If lubricated air is used, it is recommended that ISO VG32 oil is used. Once applied, the lubrication should never be interrupted.
Materials	Aluminium valve body, NBR seals, OT58 brass poppet & plunger, stainless steel spools
Valve group	3/2, 5/2-way position. Normally Closed (NC) or Normally Open (NO)
Operating temperature	0°C to 80°C
Connections	1/8", 1/4"
Mounting	By through-holes in valve body



2530

## LEVER

PART NUMBER	FUNCTION	PORT SIZE	PRICE
Z338-D159A5	3/2 NC	1/8"	£65.95
Z358-D159A5	5/2	1/8"	£69.50

## MANUALLY OPERATED VALVES

### DESCRIPTION

The manually operated, panel mounted valves, dia 22, have been designed to satisfy all the application requirements of the controls industry i.e. low actuating force 6N, short operational stroke and speed/accuracy of signal.

### SPECIFICATIONS

Type of construction	Poppet (closed centres)
Valve group	3/2, 5/3-way position. Normally Closed (NC)
Materials	Aluminium body, OT58 brass plunger, NBR seals
Mounting	Panel
Ports	M5 or cartridge diameter 4
Operating temperature	0°C to 80°C (with dry air -20°C)
Operating pressure	2 to 8 bar
Nominal pressure	6 bar
Nominal flow	60 NI/min
Nominal diameter	2.5 mm



2530

## PUSH BUTTON

PART NUMBER	FUNCTION	PORT SIZE	PRICE
Z235-895	3/2 NC	M5	£32.55
Z234-895	3/2 NC	4 mm tube	£35.93



2530

## KEY LOCKABLE

PART NUMBER	FUNCTION	PORT SIZE	PRICE
Z235-904	3/2 NC	M5	£55.56
Z234-904	3/2 NC	4 mm tube	£59.34



2530

## SELECTOR SWITCH 2-POSITION

PART NUMBER	FUNCTION	PORT SIZE	PRICE
Z235-990	3/2 NC	M5	£42.56
Z234-990	3/2 NC	4 mm tube	£46.28



2530

## SELECTOR SWITCH 3-POSITION

PART NUMBER	FUNCTION	PORT SIZE	PRICE
Z285-870	5/3	M5	£62.93
Z284-870	5/3	4 mm tube	£70.39



**PALM SWITCH  
SPRING RETURN**

2530

PART NUMBER	FUNCTION	PORT SIZE	PRICE
Z235-975	3/2 NC	M5	£43.59
Z234-975	3/2 NC	4 mm tube	£47.31



**FOOT OPERATED  
VALVE**

2530

PART NUMBER	FUNCTION	PORT SIZE	PRICE
Z235-925	3/2 NC	M5	£65.15
Z234-925	3/2 NC	4 mm tube	£68.94



**PALM SWITCH  
LATCHING – TWIST TO RELEASE**

2530

PART NUMBER	FUNCTION	PORT SIZE	PRICE
Z235-972	3/2 NC	M5	£47.90
Z234-972	3/2 NC	4 mm tube	£51.62



**VALVE FOR USE  
WITH OPERATORS**

2530

PART NUMBER	FUNCTION	PORT SIZE	PRICE
Z235-000	3/2 NC	M5	£20.40
Z234-000	3/2 NC	4 mm tube	£24.13
Z245-000	3/2 NO	M5	£23.07
Z244-000	3/2 NO	4 mm tube	£26.18



**PALM SWITCH  
STABLE**

2530

PART NUMBER	FUNCTION	PORT SIZE	PRICE
Z234-970	3/2 NC	4 mm tube	£48.08



**BRACKET**

2530

PART NUMBER	DESCRIPTION	PRICE
Z210-000	Single	£1.56



**JOYSTICK**

2530

PART NUMBER	FUNCTION	PORT SIZE	PRICE
Z235-905	3/2 NC	M5	£44.36
Z234-905	3/2 NC	4 mm tube	£48.08



**BRACKET**

2530

PART NUMBER	DESCRIPTION	PRICE
Z220-000	Double	£2.36

## DESCRIPTION

The Series 3 manual valves (1/8", 3/2 and 5/2-way) and the Series 4 manual valves (1/4", 3/2, 5/2 and 5/3-way) are available with actuators designed to satisfy different needs. The 3/2-way valves are normally closed when P is the inlet; they can also be normally open when R is the inlet.



2530

## SWITCH

PART NUMBER	FUNCTION	PORT SIZE	PRICE
Z338-990	3/2 NC	1/8"	£38.27
Z358-990	5/2	1/8"	£42.20



2530

## PUSH BUTTON

PART NUMBER	FUNCTION	PORT SIZE	COLOUR	PRICE
Z338-895	3/2 NC	1/8"	Black	£32.10
Z338-896	3/2 NC	1/8"	Green	£32.10
Z338-897	3/2 NC	1/8"	Red	£32.10
Z358-895	5/2	1/8"	Black	£40.21
Z358-896	5/2	1/8"	Green	£40.21
Z358-897	5/2	1/8"	Red	£40.21



2530

## PALM SWITCH

PART NUMBER	FUNCTION	PORT SIZE	COLOUR	PRICE
Z338-975	3/2 NC	1/8"	Black	£38.27
Z338-976	3/2 NC	1/8"	Green	£38.27
Z338-977	3/2 NC	1/8"	Red	£38.27
Z358-975	5/2	1/8"	Black	£44.45
Z358-976	5/2	1/8"	Green	£44.45
Z358-977	5/2	1/8"	Red	£44.45

## SPECIFICATIONS

Type of construction	Spool type
Valve function	3/2, 5/2, 5/3-way position. Normally Closed (NC), Centre Closed (CC) or Centre Open (CO)
Materials	Aluminium body, stainless steel spool, NBR seals
Mounting	Through holes in valve body
Threaded ports	1/8", 1/4"
Operating temperature	0°C to 80°C (with dry air -20°C)
Operating pressure	0 to 10 bar
Nominal pressure	6 bar
Nominal flow	Series 3: 1/8" = 500 NI/min Series 4: 1/8" = 650 NI/min 1/4" = 1250 NI/min
Nominal diameter	1/8" = 5 mm 1/4" = 7.5 mm



2530

## PUSH / PULL

PART NUMBER	FUNCTION	PORT SIZE	PRICE
Z338-910	3/2 NC	1/8"	£28.28
Z358-910	5/2	1/8"	£32.10
Z434-910	3/2 NC	1/4"	£55.42
Z454-910	5/2	1/4"	£59.93



2530

## PUSH AND SPRING RETURN

PART NUMBER	FUNCTION	PORT SIZE	PRICE
Z338-915	3/2 NC	1/8"	£28.28
Z358-915	5/2	1/8"	£32.10
Z434-915	3/2 NC	1/4"	£55.42
Z454-915	5/2	1/4"	£59.93



2530

## SLIDE VALVE

PART NUMBER	PORT SIZE	PRICE
ZVMS-105	M5	£12.79
ZVMS-118	1/8"	£13.90
ZVMS-114	1/4"	£14.86
ZVMS-138	3/8"	£19.19
ZVMS-112	1/2"	£23.66
ZVMS-134	3/4"	£31.77

## MANUALLY OPERATED VALVES



2530

### LEVER

PART NUMBER	FUNCTION	PORT SIZE	PRICE
Z138-900	3/2 NC	1/8"	£49.91
Z134-900	3/2 NC	1/4"	£67.66
Z158-900	5/2	1/8"	£95.51
Z154-900	5/2	1/4"	£116.19



2530

### LEVER

PART NUMBER	FUNCTION	LEVER/SPRING	PORT SIZE	PRICE
Z338-900	3/2 NC	L/L	1/8"	£38.27
Z338-905	3/2 NC	L/S	1/8"	£39.96
Z358-900	5/2	L/L	1/8"	£44.45
Z358-905	5/2	L/S	1/8"	£46.28
Z368-900	5/3 CC	L/L/L	1/8"	£51.52
Z368-905	5/3 CC	L/S/L	1/8"	£57.71
Z378-900	5/3 CO	L/L/L	1/8"	£51.52
Z378-905	5/3 CO	L/S/L	1/8"	£57.71
Z434-900	3/2 NC	L/L	1/4"	£68.43
Z434-905	3/2 NC	L/S	1/4"	£68.43
Z454-900	5/2	L/L	1/4"	£75.96
Z454-905	5/2	L/S	1/4"	£75.96
Z464-900	5/3 CC	L/L/L	1/4"	£78.41
Z464-905	5/3 CC	L/S/L	1/4"	£78.41
Z474-900	5/3 CO	L/L/L	1/4"	£78.41
Z474-905	5/3 CO	L/S/L	1/4"	£78.41



2530

### LEVER

PART NUMBER	FUNCTION	PORT SIZE	PRICE
Z138-935	3/2 NC	1/8"	£32.70
Z134-935	3/2 NC	1/4"	£50.44

Seven

## MANUALLY OPERATED PEDAL VALVES

### DESCRIPTION

The pedals can be supplied in either the pneumatic or electrical foot operated version. The pneumatic type is available with a 5/2 valve and 1/4" front ports, which allow the fittings and silencers to be assembled conveniently on the front face. A 3/2 operation can be obtained by closing an outlet port. The electrical type is available with a single pole changeover contact microswitch and a front wire outlet (PG9). The pedal can be operated as bi-stable or monostable, by switching the selector placed under the small red protection flap.

### SPECIFICATIONS – PNEUMATICALLY OPERATED

Type of construction	Spool type
Valve function	5/2-way position
Materials	Valve body AL, stainless steel spool, NBR seals, plastic casing
Assembly	Valve built into pedal body
Operating temperature	0°C to 50°C (with dry air -10°C)
Operating pressure	2.5 to 8 bar
Rated flow	650 NI/min
Ports	1/4" gas

### SPECIFICATIONS – ELECTRICALLY OPERATED

Type of construction	Single pole changeover contact microswitch
Valve function	Normally Closed (NC) / Normally Open (NO)
Assembly	Microswitch built into the pedal body
Cable entry	0°C to 50°C (with dry air -10°C)
Operating temperature	0°C to 50°C



2530

### PNEUMATICALLY OPERATED

PART NUMBER	FUNCTION	PRICE
Z354925	5/2	£75.81



2530

### ELECTRICALLY OPERATED

PART NUMBER	FUNCTION	PRICE
Z3E2-925	NC/NO	£102.77

### DESCRIPTION

The circuit selector, Mod. SCS-668-06, enables two signals coming alternately from two different points to be channelled towards the same point. The selector is mounted through holes in the body.



2530

### SHUTTLE VALVE ZSCS SERIES

PART NUMBER	PORT SIZE	PRICE
ZSCS668-06	1/8"	£18.22

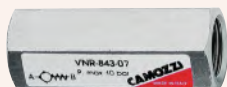
### SPECIFICATIONS

Type of construction	Poppet type
Valve group	Automatic
Materials	AL body, OT58 bush, NBR seals, delrin poppet
Pressure	0.2 bar
Operating temperature	0°C to 80°C (with dry air -20°C)
Nominal flow	800 NI/min
Fluid	Filtered air: without lubrication. If lubricated air is used, it is recommended that ISO VG32 oil is used. Once applied, the lubrication should never be interrupted

## AUTOMATIC VALVES – UNIDIRECTIONAL VALVE SERIES

### DESCRIPTION

The unidirectional valves in the VNR Series are available with M5, G1/8 and G1/4 ports. These are poppet type valves allow operation at low pressures, both when there is a free flow and during retention.



2530

### NON RETURN VALVES ZVNR SERIES

PART NUMBER	PORT SIZE	PRICE
ZVNR-205-M5	M5	£12.25
ZVNR210-1/8	1/8"	£10.87
ZVNR84307	1/4"	£18.51

### SPECIFICATIONS

Type of construction	Poppet type
Valve group	Automatic
Materials	OT58 body, NBR seals, stainless steel spring
Pressure	M5 = 1 bar, 1/8" = 0.3 bar, 1/4" = 0.2 bar
Operating temperature	0°C to 80°C (with dry air -20°C)
Nominal flow	M5 = 150 NI/min, 1/8" = 600 NI/min, 1/4" = 1400 NI/min
Fluid	Filtered air: without lubrication. If lubricated air is used, it is recommended that ISO VG32 oil is used. Once applied, the lubrication should never be interrupted

## AUTOMATIC VALVES – QUICK EXHAUST VALVE SERIES

### DESCRIPTION

Quick exhaust valves are commonly used to increase the speed of cylinders or for rapid depressurisation of tanks containing compressed air. The models VSO 425 – M5 and VSO 426 – 04 are specially designed for mounting on solenoid valves and valves incorporating a Ø4 cartridge. We recommend mounting a silencer on the outlet.



2530

### QUICK EXHAUST VALVES ZVSO SERIES

PART NUMBER	PORT SIZE	PRICE
ZVSC588	1/8"	£10.98
ZVSC544	1/4"	£13.13
ZVSC522	1/2"	£20.60

### SPECIFICATIONS

Type of construction	Poppet type
Valve group	Automatic
Materials	OT58 (brass) body, NBR seals ZVSO series, Desmopan seals ZVS series
Pressure	ZVS 1/8" 0.5 bar ZVS 1/4" 0.3 bar ZVS 1/2" 0.2 bar ZVSO 1 bar
Operating temperature	0°C to 80°C (with dry air -20°C)
Nominal flow	ZVS 1/8" P to A 650 NI/min, A to R 1000 NI/min ZVS 1/4" P to A 1100 NI/min, A to R 1900 NI/min ZVS 1/2" P to A 4500 NI/min, A to R 6300 NI/min ZVSO P to A = 50 NI/min, A to R 100 NI/min
Fluid	Filtered air: without lubrication. If lubricated air is used, it is recommended that ISO VG32 oil is used. Once applied the lubrication should never be interrupted

### QUICK EXHAUST VALVES ZVSO SERIES



2530

PART NUMBER	PORT SIZE	PRICE
ZVSO425-M5	M5	£9.17

### QUICK EXHAUST VALVES ZVSO SERIES



2530

PART NUMBER	PORT SIZE	PRICE
ZVSO426-04	1/8"	£9.17



## AUTOMATIC VALVES – FLOW CONTROL

### DESCRIPTION

These unidirectional flow controllers are equipped with M5, 1/8" and 1/4" ports. They are mainly used for controlling the speed of cylinders and may be mounted on control panels or cylinders, as required. The 1/8" and 1/4" port versions are available with two different types of adjustments too.

### SPECIFICATIONS

Type of construction	Needle type
Valve group	Uni and bidirectional controller
Materials	Aluminium body, brass needle, NBR seals
Mounting	By through holes in valve body / control panel
Ports	M5, 1/8", 1/4"
Operating temperature	0°C to 80°C (with dry air -20°C)
Nominal pressure	6 bar
Nominal diameter	M5 = 1.5 mm, 1/8" = 2 or 3 mm, 1/4" = 4 or 6 mm
Nominal flow	Ask for details



2530

### FLOW CONTROL VALVE UNIDIRECTIONAL

PART NUMBER	PORT SIZE	NOMINAL DIA.	PRICE
ZRFU-452	M5	1.5 mm	£13.85
ZRFU-482	1/8"	2.0 mm	£12.50
ZRFU-483	1/8"	3.0 mm	£12.50
ZRFU-444	1/4"	4.0 mm	£20.60
ZRFU-446	1/4"	6.0 mm	£20.60
ZRFU-429	1/2"	9.0 mm	£63.83

### BIDIRECTIONAL

ZRFO-352	M5	1.5 mm	£13.85
ZRFO-382	1/8"	2.0 mm	£12.50
ZRFO-383	1/8"	3.0 mm	£12.50
ZRFO-344	1/4"	4.0 mm	£20.60
ZRFO-346	1/4"	6.0 mm	£20.60

## AUTOMATIC VALVES – BLOCKING

### DESCRIPTION

These unidirectional and bidirectional blocking valves enable direct mounting onto cylinders. The internal design of the blocking valves allows a very high flow rate and reliable operation.

### SPECIFICATIONS

Type of construction	Poppet type
Valve group	Uni and bidirectional blocking valve
Materials	OT58 body, NBR seals
Mounting	By male thread
Ports	1/8", 1/4"
Operating temperature	0°C to 80°C (with dry air -20°C)
Operating pressure	VBU = 0.3 to 10 bar, VBO = 0 to 10 bar
Nominal pressure	6 bar
Nominal diameter	1/8" = 5.5 mm, 1/4" = 8 mm
Nominal flow	Ask for details



2530

### BLOCKING VALVES UNIDIRECTIONAL

PART NUMBER	PORT SIZE	PRICE
ZVBU-1/8	1/8"	£37.56
ZVBU-1/4	1/4"	£41.30
ZVBU-3/8	3/8"	£52.38

### BIDIRECTIONAL

ZVBO-1/8	1/8"	£37.56
ZVBO-1/4	1/4"	£41.30
ZVBO-3/8	3/8"	£52.38

## ADJUSTABLE DIAPHRAGM PRESSURE SWITCHES

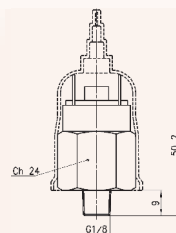
### SERIES PM

### DESCRIPTION

The diaphragm pressure switches in the PM Series are available in two versions: one with Normally Closed (NC) contacts and one with Normally Open (NO) contacts. A regulating screw, which can be adjusted using a small screwdriver, allows the switch to be set to the required pressure. The calibrated diaphragm enables an electrical signal to be generated or inhibited, depending on the pressure set.

### SPECIFICATIONS

Type of construction	Adjustable diaphragm
Mounting	Thread in body
Ports	G1/8 – tube 4/2 – M5
Operating temperature	-5°C to +60°C
Pressure	1 to 10 bar max
Voltage	220 V
Max. power	100 VA
Protection class	IP54
Max. nr. pulses per 1'	200
Lifetime	1000000 (1 million) life cycles
Max current	0.5 A
Isolation voltage	1500 V



2560

### PRESSURE SWITCH PM SERIES

PART NUMBER	PORT SIZE	PRICE
ZPM11-NC	1/8"	£53.37
ZPM11-NA	1/8"	£53.37

**NC** – Pressure switch closes an electric contact when it reaches the fixed pressure

**NA** – Pressure switch opens an electric contact when it reaches the fixed pressure

# FLOW CONTROL VALVES



## DESCRIPTION

Unidirectional and bidirectional banjo flow controllers with M5, 1/8", 1/4", 3/8" and 1/2" connections.

\* Supplied complete with 1/2" BSP female banjo

## SPECIFICATIONS

Materials	Nickel-plated brass body, NBR seals, brass bush, stainless steel spring
Operating temperature	0°C to 80°C (with dry air -20°C to +80°C)
Connections	M5, 1/8", 1/4", 3/8", 1/2"



### CYLINDER MOUNT SCREWDRIVER TYPE UNIDIRECTIONAL

2530



### CYLINDER MOUNT SCREWDRIVER TYPE BIDIRECTIONAL

2530

PART NUMBER	PORT SIZE	PRICE
ZSCU602-M5	M5	£13.58
ZSCU604-18	1/8"	£9.77
ZSCU606-14	1/4"	£10.80
ZSCU608-38	3/8"	£22.25
ZSCU610-12 *	1/2"	£58.27

PART NUMBER	PORT SIZE	PRICE
ZSCO602-M5	M5	£10.21
ZSCO604-18	1/8"	£7.24
ZSCO606-14	1/4"	£8.24
ZSCO610-12 *	1/2"	£53.55



### CYLINDER MOUNT MANUAL TYPE UNIDIRECTIONAL

2530



### CYLINDER MOUNT MANUAL TYPE BIDIRECTIONAL

2530

PART NUMBER	PORT SIZE	PRICE
ZMCU702-M5	M5	£15.00
ZMCU704-18	1/8"	£10.80
ZMCU706-14	1/4"	£12.14
ZMCU708-38	3/8"	£24.90
ZMCU710-12 *	1/2"	£58.27

PART NUMBER	PORT SIZE	PRICE
ZMCO702-M5	M5	£11.38
ZMCO704-18	1/8"	£8.65
ZMCO706-14	1/4"	£9.35
ZMCO710-12 *	1/2"	£53.55



### VALVE MOUNT SCREWDRIVER TYPE UNIDIRECTIONAL

2530



### VALVE MOUNT MANUAL TYPE UNIDIRECTIONAL

2530

PART NUMBER	PORT SIZE	PRICE
ZSVU602-M5	M5	£13.58
ZSVU604-18	1/8"	£9.77
ZSVU606-14	1/4"	£12.81
ZSVU610-12 *	1/2"	£53.55

PART NUMBER	PORT SIZE	PRICE
ZMVU702-M5	M5	£15.00
ZMVU704-18	1/8"	£10.80
ZMVU706-14	1/4"	£12.14
ZMVU710-12 *	1/2"	£53.55



### EXHAUST RESTRICTOR WITH SILENCER

2530



### SILENCING BUSH

2530

PART NUMBER	PORT SIZE	PRICE
ZRSW18	1/8"	£7.67
ZRSW14	1/4"	£8.24
ZRSW12	1/2"	£22.25

PART NUMBER	PORT SIZE	PRICE
Z2905-18	1/8"	£2.03
Z2905-14	1/4"	£2.98
Z2905-38	3/8"	£5.07

For Banjo Body see page 413

## COUPLINGS

### SERIES 5000 HOSE BARB



PART NUMBER	CONNECTION	PRICE
Z505606	6 mm	£6.73
Z505609	9 mm	£6.73

### SERIES 5000 MALE THREAD



PART NUMBER	CONNECTION	PRICE
Z5051-18	1/8" BSPP	£6.51
Z5051-14	1/4" BSPP	£6.51

### SERIES 5000 FEMALE THREAD



PART NUMBER	CONNECTION	PRICE
Z50531/8	1/8" BSPP	£6.94
Z50531/4	1/4" BSPP	£6.94

### SERIES 5000 PUSH-IN TUBE FITTINGS



PART NUMBER	CONNECTION	PRICE
Z50546/4	6 mm x 4 mm	£6.84
Z50548/6	8 mm x 6 mm	£6.84

### SERIES 5000 BULKHEAD FITTINGS



PART NUMBER	CONNECTION	PRICE
Z50521/8	1/8" BSPP	£8.96
Z50521/4	1/4" BSPP	£8.96

### SERIES 5000 BULKHEAD TUBE FITTINGS



PART NUMBER	CONNECTION	PRICE
Z50556/4	6 mm x 4 mm	£9.08
Z50558/6	8 mm x 6 mm	£9.08

### SERIES 5000 FEMALE HOSE



PART NUMBER	CONNECTION	PRICE
Z50576/14	6 mm x 14 mm	£9.89

### SERIES 50 ANTI-KINK TUBE NUT



PART NUMBER	CONNECTION	PRICE
Z50586/4	6 mm x 4 mm	£8.03
Z50588/6	8 mm x 6 mm	£8.03

## FEATURES / BENEFITS

- Compact, space saving
- Lightweight, easy to handle

## SPECIFICATIONS

Nominal flow diameter	5.0 mm (3/16")
Flow capacity	550 l/min (19.4 CFM)
Max. working pressure	12 bar (175 psi)
Temperature range	0°C to 80°C (+32°F to +176°F)
Temperature range – for dry air	-20°C to +80°C (-4°F to +176°F)
Coupling material	Nickel plated brass OT58
Nipple material	Nickel plated brass OT58
Valve	Brass
Seal	Nitrile

## NIPPLES

### SERIES 5000 HOSE BARB



PART NUMBER	CONNECTION	PRICE
Z565006	6 mm	£1.18
Z565009	9 mm	£1.18

### SERIES 5000 MALE THREAD



PART NUMBER	CONNECTION	PRICE
Z51501/8	1/8" BSPP	£1.21
Z51501/4	1/4" BSPP	£1.21

### SERIES 5000 FEMALE THREAD



PART NUMBER	CONNECTION	PRICE
Z53501/8	1/8" BSPP	£1.43
Z53501/4	1/4" BSPP	£1.43

### SERIES 5000 PUSH-IN TUBE FITTINGS



PART NUMBER	CONNECTION	PRICE
Z54506/4	6 mm x 4 mm	£1.69
Z54508/6	8 mm x 6 mm	£1.69

### SERIES 5000 FEMALE HOSE



PART NUMBER	CONNECTION	PRICE
Z57506/14	6 mm x 14 mm	£3.44

### SERIES 5000 ANTI-KINK TUBE NUT



PART NUMBER	CONNECTION	PRICE
Z58506/4	6 mm x 4 mm	£2.97
Z58508/6	8 mm x 6 mm	£2.97

## FEATURES / BENEFITS

Sprint pipe fittings are characterised by great reliability of female threads, both BSPP and BSPT, with non-flat surfaces. The patented Sprint models are provided with a particular torque system, which avoids the use of liquid glues or PTFE band, thus making the mounting quicker.

## SPECIFICATIONS

Operating pressure	Dependent on tube / installation
Operating temperature	Dependent on tube specification
Materials	Bright nickel plated brass
Sealing ring	PTFE
Tube to connect	Nylon 6, 11, 12, polyurethane and polyethylene
Media	Compressed air and any fluids compatible with material specs



**ELBOW  
BSPT MALE**

3520

PART NUMBER	MALE THREAD	PRICE
ZS20101/8	1/8" BSPT	£1.86
ZS20101/4	1/4" BSPT	£2.68
ZS20103/8	3/8" BSPT	£3.51
ZS20101/2	1/2" BSPT	£5.05



**ELBOW  
BSPT MALE / BSPP FEMALE**

3520

PART NUMBER	MALE (A)	FEMALE (B)	PRICE
ZS20201/8	1/8" BSPT	1/8" BSPP	£1.93
ZS20201/4	1/4" BSPT	1/4" BSPP	£2.68
ZS20203/8	3/8" BSPT	3/8" BSPP	£3.56
ZS20201/2	1/2" BSPT	1/2" BSPP	£5.35



**CENTRE LEG TEE  
BSPT MALE / BSPP FEMALE**

3520

PART NUMBER	MALE (A)	FEMALE (B)	PRICE
ZS20601/8	1/8" BSPT	1/8" BSPP	£2.53
ZS20601/4	1/4" BSPT	1/4" BSPP	£3.96
ZS20603/8	3/8" BSPT	3/8" BSPP	£5.56
ZS20601/2	1/2" BSPT	1/2" BSPP	£7.76



**TEE  
BSPT MALE / BSPP FEMALE**

3520

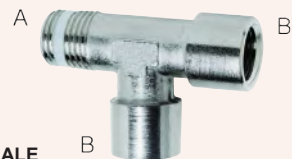
PART NUMBER	MALE (A)	FEMALE (B)	PRICE
ZS20501/8	1/8" BSPT	1/8" BSPP	£2.53
ZS20501/4	1/4" BSPT	1/4" BSPP	£3.86
ZS20503/8	3/8" BSPT	3/8" BSPP	£5.56
ZS20501/2	1/2" BSPT	1/2" BSPP	£7.76



**EQUAL TEE  
BSPT MALE**

3520

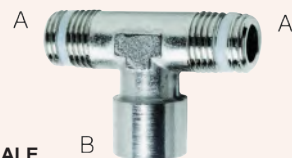
PART NUMBER	MALE THREAD	PRICE
ZS20801/8	1/8" BSPT	£2.53
ZS20801/4	1/4" BSPT	£3.96
ZS20803/8	3/8" BSPT	£5.56
ZS20801/2	1/2" BSPT	£7.76



**OFF SET TEE  
BSPT MALE / BSPP FEMALE**

3520

PART NUMBER	MALE (A)	FEMALE (B)	PRICE
ZS20701/8	1/8" BSPT	1/8" BSPP	£2.53
ZS20701/4	1/4" BSPT	1/4" BSPP	£3.96
ZS20703/8	3/8" BSPT	3/8" BSPP	£5.56
ZS20701/2	1/2" BSPT	1/2" BSPP	£7.76



**CENTRE LEG TEE  
BSPT MALE / BSPP FEMALE**

3520

PART NUMBER	MALE (A)	FEMALE (B)	PRICE
ZS20901/8	1/8" BSPT	1/8" BSPP	£2.53
ZS20901/4	1/4" BSPT	1/4" BSPP	£3.96
ZS20903/8	3/8" BSPT	3/8" BSPP	£5.56
ZS20901/2	1/2" BSPT	1/2" BSPP	£7.76



**EQUAL CONNECTOR**  
BSPT MALE

3520

PART NUMBER	MALE THREAD	PRICE
ZS25001/8	1/8" BSPT	£0.78
ZS25001/4	1/4" BSPT	£1.12
ZS25003/8	3/8" BSPT	£1.59
ZS25001/2	1/2" BSPT	£2.49



**REDUCING CONNECTOR**  
BSPT MALE / BSPT MALE

3520

PART NUMBER	MALE (A)	MALE (B)	PRICE
ZS25101/814	1/8" BSPT	1/4" BSPT	£1.15
ZS25101/838	1/8" BSPT	3/8" BSPT	£1.52
ZS25101/438	1/4" BSPT	3/8" BSPT	£1.59
ZS25101/412	1/4" BSPT	1/2" BSPT	£2.53
ZS25103/812	3/8" BSPT	1/2" BSPT	£2.53



**REDUCING EXTENDED CONNECTOR**  
BSPT MALE / BSPP FEMALE

3520

PART NUMBER	MALE (A)	FEMALE (B)	PRICE
ZS25201/818	1/8" BSPT	1/8" BSPP	£1.00
ZS25201/814	1/8" BSPT	1/4" BSPP	£1.19
ZS25201/838	1/8" BSPT	3/8" BSPP	£2.38
ZS25201/414	1/4" BSPT	1/4" BSPP	£1.33
ZS25201/438	1/4" BSPT	3/8" BSPP	£2.11
ZS25201/412	1/4" BSPT	1/2" BSPP	£3.29
ZS25203/838	3/8" BSPT	3/8" BSPP	£2.23
ZS25203/812	3/8" BSPT	1/2" BSPP	£3.29
ZS25201/212	1/2" BSPT	1/2" BSPP	£3.56



**REDUCING BUSH**  
BSPT MALE / BSPP FEMALE

3520

PART NUMBER	MALE (A)	FEMALE (B)	PRICE
ZS25301/418	1/4" BSPT	1/8" BSPP	£0.90
ZS25303/818	3/8" BSPT	1/8" BSPP	£1.19
ZS25303/814	3/8" BSPT	1/4" BSPP	£1.19
ZS25301/218	1/2" BSPT	1/8" BSPP	£2.21
ZS25301/214	1/2" BSPT	1/4" BSPP	£2.11
ZS25301/238	1/2" BSPT	3/8" BSPP	£2.11



**PLUG**  
BSPP MALE

3520

PART NUMBER	MALE THREAD	PRICE
ZS26101/8	1/8" BSPP	£1.13
ZS26101/4	1/4" BSPP	£1.34
ZS26103/8	3/8" BSPP	£1.55
ZS26101/2	1/2" BSPP	£2.49



**PLUG - FLUSH FITTING**  
BSPP MALE

3520

PART NUMBER	MALE THREAD	PRICE
ZS26151/8	1/8" BSPP	£1.13
ZS26151/4	1/4" BSPP	£1.34
ZS26153/8	3/8" BSPP	£1.55



**SWIVEL CONNECTOR**  
BSPT MALE / BSPP FEMALE

3520

PART NUMBER	MALE (A)	FEMALE (B)	PRICE
ZS2541-1818	1/8" BSPT	1/8" BSPP	£1.97
ZS2541-1414	1/4" BSPT	1/4" BSPP	£2.49
ZS2541-3838	3/8" BSPT	3/8" BSPP	£4.09

# BSP ADAPTORS



## DESCRIPTION

Series 2000 pipe fittings are available in a wide range of styles and sizes.

## SPECIFICATIONS

Maximum pressure	40 bar
Threads	GAS conical ISO 7 (BSPT) GAS cylindrical ISO 228 (BSP)
Fluid	Compressed air or other low pressure fluids
Temperature	-40°C to +120°C
Materials	Nickel plated brass body



3520

## EQUAL CONNECTOR BSPT MALE

PART NUMBER	MALE THREAD	PRICE
Z25001/8	1/8" BSPT	£0.70
Z25001/4	1/4" BSPT	£1.01
Z25003/8	3/8" BSPT	£1.47
Z25001/2	1/2" BSPT	£2.27
Z25003/4	3/4" BSPT	£3.83
Z25001	1" BSPT	£13.75



3520

## EQUAL CONNECTOR BSPP MALE

PART NUMBER	MALE THREAD	PRICE
Z2501M5	M5	£0.70
Z25011/8	1/8" BSPP	£0.84
Z25011/4	1/4" BSPP	£1.19
Z25013/8	3/8" BSPP	£1.49
Z25011/2	1/2" BSPP	£2.43



3520

## REDUCING CONNECTOR BSPT MALE / BSPT MALE

PART NUMBER	MALE (A)	MALE (B)	PRICE
Z25101/814	1/8" BSPT	1/4" BSPT	£1.04
Z25101/838	1/8" BSPT	3/8" BSPT	£1.40
Z25101/438	1/4" BSPT	3/8" BSPT	£1.47
Z25101/412	1/4" BSPT	1/2" BSPT	£2.33
Z25103/812	3/8" BSPT	1/2" BSPT	£2.33
Z25101/234	1/2" BSPT	3/4" BSPT	£3.56



3520

## REDUCING EXTENDED CONNECTOR BSPT MALE / BSPP FEMALE

PART NUMBER	MALE (A)	FEMALE (B)	PRICE
Z25201/818	1/8" BSPT	1/8" BSPP	£0.87
Z25201/814	1/8" BSPT	1/4" BSPP	£1.10
Z25201/838	1/8" BSPT	3/8" BSPP	£2.12
Z25201/414	1/4" BSPT	1/4" BSPP	£1.19
Z25201/438	1/4" BSPT	3/8" BSPP	£1.93
Z25201/412	1/4" BSPT	1/2" BSPP	£2.98
Z25203/838	3/8" BSPT	3/8" BSPP	£1.99
Z25203/812	3/8" BSPT	1/2" BSPP	£2.98
Z25201/212	1/2" BSPT	1/2" BSPP	£3.26



3520

## REDUCING EXTENDED CONNECTOR BSPP MALE / BSPP FEMALE

PART NUMBER	MALE (A)	FEMALE (B)	PRICE
Z2521M518	M5	1/8" BSPP	£0.87
Z25211/818	1/8" BSPP	1/8" BSPP	£0.80
Z25211/814	1/8" BSPP	1/4" BSPP	£1.06
Z25211/838	1/8" BSPP	3/8" BSPP	£2.14
Z25211/414	1/4" BSPP	1/4" BSPP	£1.20
Z25211/438	1/4" BSPP	3/8" BSPP	£1.82
Z25211/412	1/4" BSPP	1/2" BSPP	£2.74
Z25213/838	3/8" BSPP	3/8" BSPP	£1.96
Z25213/812	3/8" BSPP	1/2" BSPP	£2.89
Z25211/212	1/2" BSPP	1/2" BSPP	£3.13



3520

## REDUCING CONNECTOR BSPP MALE / BSPP MALE

PART NUMBER	MALE (A)	MALE (B)	PRICE
Z2511M51/8	M5	1/8" BSPP	£0.95
Z25111/814	1/8" BSPP	1/4" BSPP	£1.04
Z25111/838	1/8" BSPP	3/8" BSPP	£1.43
Z25111/438	1/4" BSPP	3/8" BSPP	£1.40
Z25111/412	1/4" BSPP	1/2" BSPP	£2.36
Z25113/812	3/8" BSPP	1/2" BSPP	£2.36

# BSP ADAPTORS



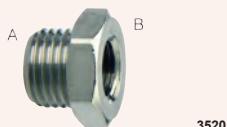
**EQUAL CONNECTOR  
EXTENDED  
BSPP MALE / BSPP FEMALE**

PART NUMBER	MALE (A)	FEMALE (B)	LENGTH	PRICE
Z25251/816	1/8" BSPP	1/8" BSPP	16 mm	£1.19
Z25251/836	1/8" BSPP	1/8" BSPP	36 mm	£1.94
Z25251/427	1/4" BSPP	1/4" BSPP	27 mm	£1.97
Z25251/443	1/4" BSPP	1/4" BSPP	43 mm	£2.56



**REDUCING BUSH  
BSPT MALE / BSPP FEMALE**

PART NUMBER	MALE (A)	FEMALE (B)	PRICE
Z25301/418	1/4" BSPT	1/8" BSPP	£0.83
Z25303/818	3/8" BSPT	1/8" BSPP	£1.10
Z25303/814	3/8" BSPT	1/4" BSPP	£1.10
Z25301/218	1/2" BSPT	1/8" BSPP	£1.97
Z25301/214	1/2" BSPT	1/4" BSPP	£1.93
Z25301/238	1/2" BSPT	3/8" BSPP	£1.93
Z25303/438	3/4" BSPT	3/8" BSPP	£6.89
Z25303/412	3/4" BSPT	1/2" BSPP	£2.67
Z2530112	1" BSPT	1/2" BSPP	£9.95



**REDUCING BUSH  
BSPP MALE / BSPP FEMALE**

PART NUMBER	MALE (A)	FEMALE (B)	PRICE
Z25311/8M5	1/8" BSPP	M5	£0.84
Z25311/418	1/4" BSPP	1/8" BSPP	£0.87
Z25313/818	3/8" BSPP	1/8" BSPP	£1.10
Z25313/814	3/8" BSPP	1/4" BSPP	£1.10
Z25311/218	1/2" BSPP	1/8" BSPP	£2.33
Z25311/214	1/2" BSPP	1/4" BSPP	£1.97
Z25311/238	1/2" BSPP	3/8" BSPP	£1.97



**EQUAL CONNECTOR  
BSPP FEMALE**

PART NUMBER	FEMALE THREAD	PRICE
Z2543M5	M5	£0.70
Z2543-1/8	1/8" BSPP	£0.83
Z2543-1/4	1/4" BSPP	£1.19
Z25433/8	3/8" BSPP	£2.33



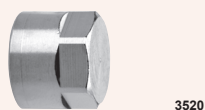
**REDUCING CONNECTOR  
BSPP FEMALE / BSPP FEMALE**

PART NUMBER	FEMALE (A)	FEMALE (B)	PRICE
Z2553M51/8	M5	1/8" BSPP	£1.01
Z25531/814	1/8" BSPP	1/4" BSPP	£1.16
Z25531/838	1/8" BSPP	3/8" BSPP	£2.12
Z25531/812	1/8" BSPP	1/2" BSPP	£2.98
Z25531/438	1/4" BSPP	3/8" BSPP	£2.27
Z25531/412	1/4" BSPP	1/2" BSPP	£3.15
Z25533/812	3/8" BSPP	1/2" BSPP	£3.26



**BLANKING PLUG  
BSPP MALE**

PART NUMBER	MALE	LENGTH	PRICE
Z2611M5	M5	7.5 mm	£0.58
Z26111/8	1/8" BSPP	10.5 mm	£0.70
Z26111/4	1/4" BSPP	13.0 mm	£0.95
Z26113/8	3/8" BSPP	14.0 mm	£1.19
Z26111/2	1/2" BSPP	15.5 mm	£1.97
Z26111	1" BSPP	19.0 mm	£6.24



**BLANKING CAP  
BSPP FEMALE**

PART NUMBER	FEMALE	LENGTH	PRICE
Z26131/8	1/8" BSPP	11.0 mm	£0.70
Z26131/4	1/4" BSPP	13.5 mm	£1.04
Z26133/8	3/8" BSPP	15.5 mm	£1.49
Z26131/2	1/2" BSPP	22.5 mm	£2.43



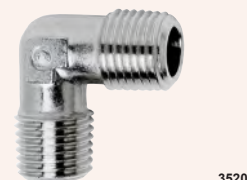
**BLANKING PLUG  
BSPT MALE**

PART NUMBER	MALE	LENGTH	PRICE
Z26103/4	3/4" BSPT	16.5 mm	£3.20



**EQUAL ELBOW  
BSPP FEMALE**

PART NUMBER	FEMALE THREAD	PRICE
Z20131/8	1/8" BSPP	£1.97
Z20131/4	1/4" BSPP	£2.82
Z20133/8	3/8" BSPP	£3.56
Z20131/2	1/2" BSPP	£6.33



**EQUAL ELBOW  
BSPT MALE**

PART NUMBER	MALE THREAD	PRICE
Z20101/8	1/8" BSPT	£1.66
Z20101/4	1/4" BSPT	£2.43
Z20103/8	3/8" BSPT	£3.20
Z20101/2	1/2" BSPT	£4.58
Z20103/4	3/4" BSPT	£14.45
Z20101	1" BSPT	£23.11

## ELBOW BSPT MALE / BSPP FEMALE



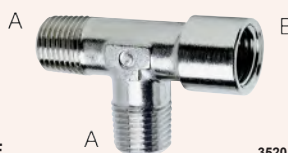
PART NUMBER	MALE (A)	FEMALE (B)	PRICE
Z2020M5	M5	M5	£1.90
Z20201/8	1/8" BSPT	1/8" BSPP	£1.76
Z20201/4	1/4" BSPT	1/4" BSPP	£2.43
Z20203/8	3/8" BSPT	3/8" BSPP	£3.26
Z20201/2	1/2" BSPT	1/2" BSPP	£4.84
Z20203/4	3/4" BSPT	3/4" BSPP	£17.66
Z20201	1" BSPT	1" BSPP	£29.24

## HOSETAILED BSPP MALE



PART NUMBER	TUBE ID	MALE	PRICE
Z26012M5	2 mm	M5	£1.13
Z26014.5M5	4 mm	M5	£0.87
Z260171/8	7 mm	1/8" BSPP	£0.95
Z260171/4	7 mm	1/4" BSPP	£1.30
Z260181/8	8 mm	1/8" BSPP	£0.95
Z260191/8	9 mm	1/8" BSPP	£0.95
Z260191/4	9 mm	1/4" BSPP	£1.30
Z260193/8	9 mm	3/8" BSPP	£1.56
Z2601121/4	12 mm	1/4" BSPP	£1.43
Z2601123/8	12 mm	3/8" BSPP	£1.56
Z2601121/2	12 mm	1/2" BSPP	£2.70
Z2601173/8	17 mm	3/8" BSPP	£1.99
Z2601171/2	17 mm	1/2" BSPP	£2.86

## TEE BSPT MALE / BSPP FEMALE



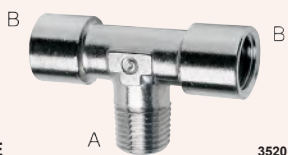
PART NUMBER	MALE (A)	FEMALE (B)	PRICE
Z20501/8	1/8" BSPT	1/8" BSPP	£2.33
Z20501/4	1/4" BSPT	1/4" BSPP	£3.50
Z20503/8	3/8" BSPT	3/8" BSPP	£5.05
Z20501/2	1/2" BSPT	1/2" BSPP	£7.04

## EQUAL TEE BSPT MALE



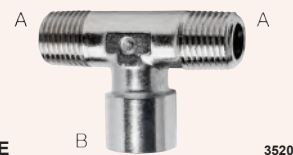
PART NUMBER	MALE THREAD	PRICE
Z2080-1/8	1/8" BSPT	£2.33
Z2080-1/4	1/4" BSPT	£3.56
Z20803/8	3/8" BSPT	£5.05
Z20801/2	1/2" BSPT	£7.04
Z20803/4	3/4" BSPT	£18.82
Z20801	1" BSPT	£27.24

## CENTRE LEG TEE BSPT MALE / BSPP FEMALE



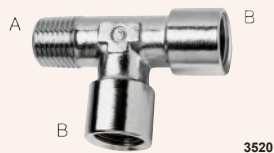
PART NUMBER	MALE (A)	FEMALE (B)	PRICE
Z20601/8	1/8" BSPT	1/8" BSPP	£2.33
Z20601/4	1/4" BSPT	1/4" BSPP	£3.56
Z20603/8	3/8" BSPT	3/8" BSPP	£5.05
Z20601/2	1/2" BSPT	1/2" BSPP	£7.04

## CENTRE LEG TEE BSPT MALE / BSPP FEMALE



PART NUMBER	MALE (A)	FEMALE (B)	PRICE
Z20901/8	1/8" BSPT	1/8" BSPP	£2.33
Z20901/4	1/4" BSPT	1/4" BSPP	£3.56
Z20903/8	3/8" BSPT	3/8" BSPP	£5.05
Z20901/2	1/2" BSPT	1/2" BSPP	£7.04
Z20903/4	3/4" BSPT	3/4" BSPP	£18.16
Z20901	1" BSPT	1" BSPP	£28.71

## OFF SET TEE BSPT MALE / BSPP FEMALE



PART NUMBER	MALE (A)	FEMALE (B)	PRICE
Z20701/8	1/8" BSPT	1/8" BSPP	£2.33
Z20701/4	1/4" BSPT	1/4" BSPP	£3.56
Z20703/8	3/8" BSPT	3/8" BSPP	£5.05
Z20701/2	1/2" BSPT	1/2" BSPP	£7.04

## EQUAL TEE BSPP FEMALE



PART NUMBER	FEMALE THREAD	PRICE
Z20031/8	1/8" BSPP	£2.33
Z20031/4	1/4" BSPP	£3.52
Z20033/8	3/8" BSPP	£5.14
Z20031/2	1/2" BSPP	£7.24

## EQUAL CROSS BSPP FEMALE



PART NUMBER	FEMALE THREAD	PRICE
Z20331/8	1/8" BSPP	£4.03
Z20331/4	1/4" BSPP	£5.08
Z20333/8	3/8" BSPP	£6.55



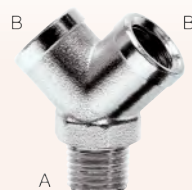
# BSP ADAPTORS



**EQUAL 2-WAY 'Y' PIECE  
BSPP FEMALE**

3520

PART NUMBER	FEMALE THREAD	PRICE
Z20431/8	1/8" BSPP	£4.03
Z20431/4	1/4" BSPP	£4.39
Z20433/8	3/8" BSPP	£6.25
Z20431/2	1/2" BSPP	£8.56



**EQUAL 2-WAY 'Y' PIECE  
BSPT MALE / BSPP FEMALE**

3520

PART NUMBER	MALE (A)	FEMALE (B)	PRICE
Z20401/8	1/8" BSPT	1/8" BSPP	£4.03
Z20401/4	1/4" BSPT	1/4" BSPP	£4.39
Z20403/8	3/8" BSPT	3/8" BSPP	£6.25
Z20401/2	1/2" BSPT	1/2" BSPP	£8.47

Seven



**SINGLE BANJO CONNECTOR  
BSPP FEMALE**

3520

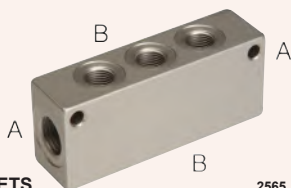
PART NUMBER	TUBE OD	FEMALE	PRICE
Z2023M5M5	10.5 mm	M5	£1.66
Z2023M6	10.5 mm	M6	£1.56
Z20231/8	20.0 mm	1/8" BSPP	£1.90
Z20231/4	23.5 mm	1/4" BSPP	£2.43
Z20233/8	23.5 mm	3/8" BSPP	£3.26



**DISTRIBUTION BLOCK  
BSPP FEMALE**

2565

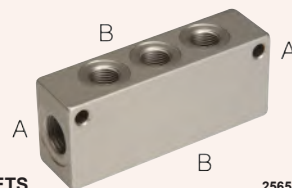
PART NUMBER	FEMALE THREAD	PRICE
Z30331/8	1/8" BSPP	£4.12
Z30331/4	1/4" BSPP	£6.97
Z30333/8	3/8" BSPP	£10.37
Z30331/2	1/2" BSPP	£12.74



**PNEUMATIC MANIFOLD  
WITH DOUBLE SIDED OUTLETS**

2565

PART NUMBER	FEMALE (A)	OUTLETS	FEMALE (B)	PRICE
Z3043-14318	1/4"	3	1/8"	£14.01
Z3043-14418	1/4"	4	1/8"	£17.78
Z3043-14518	1/4"	5	1/8"	£21.70
Z3043-14618	1/4"	6	1/8"	£25.68
Z3043-38314	3/8"	3	1/4"	£16.88
Z3043-38414	3/8"	4	1/4"	£21.52
Z3043-38514	3/8"	5	1/4"	£25.88
Z3043-38614	3/8"	6	1/4"	£32.00
Z3043-12338	1/2"	3	3/8"	£29.00
Z3043-12438	1/2"	4	3/8"	£35.04
Z3043-12538	1/2"	5	3/8"	£40.94
Z3043-12638	1/2"	6	3/8"	£44.83



**PNEUMATIC MANIFOLD  
WITH SINGLE SIDED OUTLETS**

2565

PART NUMBER	FEMALE (A)	OUTLETS	FEMALE (B)	PRICE
Z3053-14318	1/4"	3	1/8"	£13.37
Z3053-14418	1/4"	4	1/8"	£14.01
Z3053-14518	1/4"	5	1/8"	£16.49
Z3053-14618	1/4"	6	1/8"	£18.80
Z3053-38314	3/8"	3	1/4"	£13.78
Z3053-38414	3/8"	4	1/4"	£17.20
Z3053-38514	3/8"	5	1/4"	£19.82
Z3053-38614	3/8"	6	1/4"	£22.61
Z3053-12338	1/2"	3	3/8"	£24.65
Z3053-12438	1/2"	4	3/8"	£26.59
Z3053-12538	1/2"	5	3/8"	£31.00
Z3053-12638	1/2"	6	3/8"	£33.73

## SPECIFICATIONS

Operating pressure	0.8 to 16 bar (232 psi)
Operating temperature	-10°C to +60°C (+14°F to +140°F)
Body & collet materials	Nickel plated brass
Threads	BSPP with PTFE sealing ring
Tube to connect	Nylon 6, 11, 12, polyurethane and polyethylene
Media	Compressed air

### STUD COUPLING with sealing ring BSPP MALE



2520

PART NUMBER	TUBE OD	THREAD	PRICE
ZS6510041/8	4 mm	1/8" BSPP	£1.51
ZS6510041/4	4 mm	1/4" BSPP	£1.75
ZS6510051/8	5 mm	1/8" BSPP	£1.51
ZS6510051/4	5 mm	1/4" BSPP	£1.75
ZS6510061/8	6 mm	1/8" BSPP	£1.51
ZS6510061/4	6 mm	1/4" BSPP	£1.75
ZS6510081/8	8 mm	1/8" BSPP	£1.91
ZS6510081/4	8 mm	1/4" BSPP	£1.96
ZS6510083/8	8 mm	3/8" BSPP	£2.34
ZS6510101/4	10 mm	1/4" BSPP	£2.92
ZS6510103/8	10 mm	3/8" BSPP	£2.92
ZS6510101/2	10 mm	1/2" BSPP	£3.95
ZS6510121/4	12 mm	1/4" BSPP	£3.49
ZS6510123/8	12 mm	3/8" BSPP	£3.49
ZS6510121/2	12 mm	1/2" BSPP	£4.43
ZS6510143/8	14 mm	3/8" BSPP	£5.14
ZS6510141/2	14 mm	1/2" BSPP	£5.14

### STUD COUPLING with O-ring BSPP MALE



2520

PART NUMBER	TUBE OD	THREAD	PRICE
Z651204M5	4 mm	M5	£1.75
Z651204M6	4 mm	M6	£1.75
Z6512041/8	4 mm	1/8" BSPP	£1.66
Z6512041/4	4 mm	1/4" BSPP	£2.00
Z651205M5	5 mm	M5	£1.75
Z651206M5	6 mm	M5	£1.75
Z6512061/8	6 mm	1/8" BSPP	£1.66
Z6512061/4	6 mm	1/4" BSPP	£2.00
Z6512081/8	8 mm	1/8" BSPP	£2.00
Z6512081/4	8 mm	1/4" BSPP	£2.12
Z6512083/8	8 mm	3/8" BSPP	£2.47
Z6512101/4	10 mm	1/4" BSPP	£2.92
Z6512103/8	10 mm	3/8" BSPP	£2.92
Z6512121/4	12 mm	1/4" BSPP	£3.49
Z6512123/8	12 mm	3/8" BSPP	£3.49

### STUD COUPLING BSPP FEMALE



2520

PART NUMBER	TUBE OD	THREAD	PRICE
Z646304M5	4 mm	M5	£2.44
Z6463041/8	4 mm	1/8" BSPP	£2.27
Z6463051/8	5 mm	1/8" BSPP	£2.27
Z6463061/8	6 mm	1/8" BSPP	£2.27
Z6463061/4	6 mm	1/4" BSPP	£2.58
Z6463081/8	8 mm	1/8" BSPP	£2.58
Z6463081/4	8 mm	1/4" BSPP	£2.72
Z6463101/4	10 mm	1/4" BSPP	£3.49

### EQUAL STRAIGHT CONNECTOR



2520

PART NUMBER	TUBE OD	PRICE
Z658004	4 mm	£3.03
Z658005	5 mm	£3.03
Z658006	6 mm	£3.03
Z658008	8 mm	£3.49
Z658010	10 mm	£4.82
Z658012	12 mm	£5.17
Z658014	14 mm	£8.92

### BULKHEAD CONNECTOR



2520

PART NUMBER	TUBE OD	PRICE
Z659004	4 mm	£4.09
Z659005	5 mm	£4.09
Z659006	6 mm	£4.09
Z659008	8 mm	£4.50
Z659010	10 mm	£6.70
Z659012	12 mm	£7.65
Z659014	14 mm	£10.92

### EQUAL ELBOW



2520

PART NUMBER	TUBE OD	PRICE
Z655004	4 mm	£2.97
Z655005	5 mm	£3.42
Z655006	6 mm	£3.26
Z655008	8 mm	£3.49
Z655010	10 mm	£5.26
Z655012	12 mm	£6.98
Z655014	14 mm	£9.06

# BSP SUPER-RAPID PUSH-IN FITTINGS FOR PLASTIC TUBE



**STUD SWIVEL ELBOW**  
with sealing ring  
BSPP MALE

2520

PART NUMBER	TUBE OD	THREAD	PRICE
ZS6520041/8	4 mm	1/8" BSPP	£3.06
ZS6520041/4	4 mm	1/4" BSPP	£3.29
ZS6520051/8	5 mm	1/8" BSPP	£3.06
ZS6520051/4	5 mm	1/4" BSPP	£3.82
ZS6520061/8	6 mm	1/8" BSPP	£3.06
ZS6520061/4	6 mm	1/4" BSPP	£3.42
ZS6520081/8	8 mm	1/8" BSPP	£3.53
ZS6520081/4	8 mm	1/4" BSPP	£3.82
ZS6520083/8	8 mm	3/8" BSPP	£4.67
ZS6520101/4	10 mm	1/4" BSPP	£5.39
ZS6520103/8	10 mm	3/8" BSPP	£5.65
ZS6520101/2	10 mm	1/2" BSPP	£6.98
ZS6520121/4	12 mm	1/4" BSPP	£6.18
ZS6520123/8	12 mm	3/8" BSPP	£6.62
ZS6520121/2	12 mm	1/2" BSPP	£7.97
ZS6520143/8	14 mm	3/8" BSPP	£9.06
ZS6520141/2	14 mm	1/2" BSPP	£9.17



**STUD SWIVEL ELBOW**  
with O-ring  
BSPP MALE

2520

PART NUMBER	TUBE OD	THREAD	PRICE
Z652204M5	4 mm	M5	£3.42
Z6522041/8	4 mm	1/8" BSPP	£3.18
Z6522041/4	4 mm	1/4" BSPP	£3.57
Z652205M5	5 mm	M5	£3.42
Z652206M5	6 mm	M5	£3.42
Z6522061/8	6 mm	1/8" BSPP	£3.18
Z6522061/4	6 mm	1/4" BSPP	£3.57
Z6522081/8	8 mm	1/8" BSPP	£3.75
Z6522081/4	8 mm	1/4" BSPP	£3.85
Z6522083/8	8 mm	3/8" BSPP	£4.67
Z6522101/4	10 mm	1/4" BSPP	£5.17
Z6522103/8	10 mm	3/8" BSPP	£5.88
Z6522121/4	12 mm	1/4" BSPP	£6.62
Z6522123/8	12 mm	3/8" BSPP	£6.62



**SWIVEL BRANCH TEE**  
with sealing ring  
BSPP MALE

2520

PART NUMBER	TUBE OD	THREAD	PRICE
ZS6430041/8	4 mm	1/8" BSPP	£4.46
ZS6430051/8	5 mm	1/8" BSPP	£4.46
ZS6430051/4	5 mm	1/4" BSPP	£4.79
ZS6430061/8	6 mm	1/8" BSPP	£4.46
ZS6430061/4	6 mm	1/4" BSPP	£4.79
ZS6430081/8	8 mm	1/8" BSPP	£5.45
ZS6430081/4	8 mm	1/4" BSPP	£5.59
ZS6430083/8	8 mm	3/8" BSPP	£6.26
ZS6430101/4	10 mm	1/4" BSPP	£7.91
ZS6430103/8	10 mm	3/8" BSPP	£8.45
ZS6430121/4	12 mm	1/4" BSPP	£8.70
ZS6430123/8	12 mm	3/8" BSPP	£9.17
ZS6430121/2	12 mm	1/2" BSPP	£10.55
ZS6430141/2	14 mm	1/2" BSPP	£12.91



**SWIVEL BRANCH TEE**  
with O-ring  
BSPP MALE

2520

PART NUMBER	TUBE OD	THREAD	PRICE
Z643204M5	4 mm	M5	£4.24
Z6432041/8	4 mm	1/8" BSPP	£4.50
Z643205M5	5 mm	M5	£4.24
Z6432061/8	6 mm	1/8" BSPP	£4.24
Z6432061/4	6 mm	1/4" BSPP	£4.86
Z6432081/8	8 mm	1/8" BSPP	£5.52
Z6432081/4	8 mm	1/4" BSPP	£5.69
Z6432083/8	8 mm	3/8" BSPP	£6.41
Z6432101/4	10 mm	1/4" BSPP	£8.14
Z6432103/8	10 mm	3/8" BSPP	£8.70
Z6432121/4	12 mm	1/4" BSPP	£9.17
Z6432123/8	12 mm	3/8" BSPP	£9.74



**SWIVEL RUN TEE**  
with sealing ring  
BSPP MALE

2520

PART NUMBER	TUBE OD	THREAD	PRICE
ZS6440041/8	4 mm	1/8" BSPP	£4.46
ZS6440051/8	5 mm	1/8" BSPP	£4.46
ZS6440061/8	6 mm	1/8" BSPP	£4.46
ZS6440061/4	6 mm	1/4" BSPP	£4.79
ZS6440081/8	8 mm	1/8" BSPP	£5.45
ZS6440081/4	8 mm	1/4" BSPP	£5.59
ZS6440083/8	8 mm	3/8" BSPP	£6.26
ZS6440101/4	10 mm	1/4" BSPP	£7.91
ZS6440103/8	10 mm	3/8" BSPP	£8.45
ZS6440123/8	12 mm	3/8" BSPP	£9.17
ZS6440141/2	14 mm	1/2" BSPP	£13.04



**SWIVEL RUN TEE**  
with O-ring  
BSPP MALE

2520

PART NUMBER	TUBE OD	THREAD	PRICE
Z644204M5	4 mm	M5	£4.24
Z6442041/8	4 mm	1/8" BSPP	£4.50
Z644205M5	5 mm	M5	£4.24
Z6442061/8	6 mm	1/8" BSPP	£4.24
Z6442061/4	6 mm	1/4" BSPP	£4.86
Z6442081/8	8 mm	1/8" BSPP	£5.69
Z6442081/4	8 mm	1/4" BSPP	£5.69
Z6442083/8	8 mm	3/8" BSPP	£6.26
Z6442101/4	10 mm	1/4" BSPP	£8.14
Z6442103/8	10 mm	3/8" BSPP	£8.70
Z6442121/4	12 mm	1/4" BSPP	£9.17
Z6442123/8	12 mm	3/8" BSPP	£9.74



**EQUAL TEE**

2520

PART NUMBER	TUBE OD	PRICE
Z654004	4 mm	£3.85
Z654005	5 mm	£3.85
Z654006	6 mm	£4.17
Z654008	8 mm	£4.79
Z654010	10 mm	£7.37
Z654012	12 mm	£9.17
Z654014	14 mm	£12.39



**EQUAL CROSS**

2520

PART NUMBER	TUBE OD	PRICE
Z66004	4 mm	£7.86
Z66005	5 mm	£7.86
Z66006	6 mm	£7.86
Z66008	8 mm	£8.77
Z66010	10 mm	£12.25
Z66012	12 mm	£18.00



**FIXED 'Y' CONNECTOR**

2520

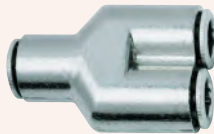
PART NUMBER	TUBE OD	THREAD	PRICE
Z645104M5	4 mm	M5	£5.65
Z645106M5	6 mm	M5	£5.85



**SWIVEL 'Y' CONNECTOR  
BSPP**

2520

PART NUMBER	TUBE OD	THREAD	PRICE
ZS6450041/8	4 mm	1/8" BSPP	£5.52
ZS6450061/8	6 mm	1/8" BSPP	£5.69
ZS6450081/8	8 mm	1/8" BSPP	£6.79
ZS6450081/4	8 mm	1/4" BSPP	£6.79



**EQUAL 'Y' CONNECTOR**

2520

PART NUMBER	TUBE OD	PRICE
Z65604	4 mm	£6.20
Z65606	6 mm	£6.20
Z65608	8 mm	£7.46
Z656010	10 mm	£13.02



**PLASTIC BLANKING PLUG**

2520

PART NUMBER	TUBE OD	PRICE
Z69004	4 mm	£0.79
Z69005	5 mm	£0.79
Z69006	6 mm	£0.79
Z69008	8 mm	£0.87
Z690010	10 mm	£1.12
Z690012	12 mm	£1.43
Z690014	14 mm	£2.01



**TUBE BLANKING CAP**

2520

PART NUMBER	TUBE OD	PRICE
Z67504	4 mm	£1.56
Z67506	6 mm	£1.56
Z67508	8 mm	£1.78
Z675010	10 mm	£2.05
Z675012	12 mm	£2.41



**STEM ADAPTOR  
BSPP**

2520

PART NUMBER	TUBE OD	THREAD	PRICE
Z681104M5	4 mm	M5	£0.94
Z6811041/8	4 mm	1/8" BSPP	£0.90
Z6811051/8	5 mm	1/8" BSPP	£0.90
Z6811051/4	5 mm	1/4" BSPP	£1.10
Z6811061/8	6 mm	1/8" BSPP	£0.87
Z6811061/4	6 mm	1/4" BSPP	£1.10
Z6811081/8	8 mm	1/8" BSPP	£0.90
Z6811081/4	8 mm	1/4" BSPP	£1.10
Z6811101/4	10 mm	1/4" BSPP	£1.43
Z6811103/8	10 mm	3/8" BSPP	£1.90
Z6811123/8	12 mm	3/8" BSPP	£1.90
Z6811141/2	14 mm	1/2" BSPP	£3.06



**PRESS FIT CARTRIDGE**

2520

PART NUMBER	TUBE OD	PRICE
Z67004	4 mm	£1.56
Z67005	5 mm	£1.56
Z67006	6 mm	£1.56
Z67008	8 mm	£1.91
Z670010	10 mm	£2.40



### TUBE STEM INCREASER

2520

PART NUMBER	TUBE OD	STEM OD	PRICE
Z685064	6 mm	4 mm	£1.94
Z685086	8 mm	6 mm	£2.07



### STRAIGHT STEM

2520

PART NUMBER	TUBE OD	PRICE
Z695004	4 mm	£0.98
Z695006	6 mm	£1.12
Z695008	8 mm	£1.16
Z695010	10 mm	£1.59
Z695012	12 mm	£1.98
Z695014	14 mm	£2.54



### STEM REDUCER

2520

PART NUMBER	TUBE OD	STEM OD	PRICE
Z680004-05	4 mm	5 mm	£1.96
Z680004-06	4 mm	6 mm	£1.96
Z680004-08	4 mm	8 mm	£2.00
Z680005-06	5 mm	6 mm	£1.96
Z680005-08	5 mm	8 mm	£2.00
Z680006-08	6 mm	8 mm	£2.07
Z680006-10	6 mm	10 mm	£2.47
Z680006-12	6 mm	12 mm	£2.70
Z680008-10	8 mm	10 mm	£2.92
Z680008-12	8 mm	12 mm	£2.92
Z680010-12	10 mm	12 mm	£2.98
Z680010-14	10 mm	14 mm	£3.53
Z680012-14	12 mm	14 mm	£3.95



### TUBE TO STEM ELBOW

2520

PART NUMBER	TUBE OD	STEM OD	PRICE
Z655504-04	4 mm	4 mm	£4.63
Z655506-06	6 mm	6 mm	£4.63
Z655508-08	8 mm	8 mm	£4.88
Z65551010	10 mm	10 mm	£7.97



### DUST COVER

2520

PART NUMBER	TUBE OD	PRICE
Z67084	4 mm	£0.40
Z67085	5 mm	£0.40
Z67086	6 mm	£0.40
Z67088	8 mm	£0.40
Z670810	10 mm	£0.40
Z670812	12 mm	£0.45
Z670814	14 mm	£0.45



### SINGLE BANJO CONNECTOR FOR USE WITH BANJO BOLTS

2520

PART NUMBER	TUBE OD	BOLT THREAD	PRICE
Z661004M5	4 mm	M5	£2.34
Z661004M6	4 mm	M6	£2.34
Z6610041/8	4 mm	1/8"	£2.91
Z661005M5	5 mm	M5	£2.34
Z661005M6	5 mm	M6	£2.34
Z6610051/8	5 mm	1/8"	£2.91
Z661006M5	6 mm	M5	£2.34
Z661006M6	6 mm	M6	£2.34
Z6610061/8	6 mm	1/8"	£2.91
Z6610061/4	6 mm	1/4"	£3.26
Z6610081/8	8 mm	1/8"	£3.31
Z6610081/4	8 mm	1/4"	£3.44
Z6610101/4	10 mm	1/4"	£4.34
Z6610103/8	10 mm	3/8"	£4.82



### DOUBLE BANJO CONNECTOR FOR USE WITH BANJO BOLTS

2520

PART NUMBER	TUBE OD	BOLT THREAD	PRICE
Z662004M5	4 mm	M5	£4.82
Z6620041/8	4 mm	1/8"	£5.00
Z6620061/8	6 mm	1/8"	£5.00
Z6620061/4	6 mm	1/4"	£5.43
Z6620081/8	8 mm	1/8"	£5.76
Z6620081/4	8 mm	1/4"	£6.20



### SINGLE BANJO CONNECTOR with O-ring

2520

PART NUMBER	TUBE OD	THREAD	PRICE
Z662204M5	4 mm	M5	£6.24
Z6622041/8	4 mm	1/8" BSPP	£6.24
Z6622061/8	6 mm	1/8" BSPP	£6.24
Z6622061/4	6 mm	1/4" BSPP	£6.89
Z6622081/8	8 mm	1/8" BSPP	£6.55
Z6622081/4	8 mm	1/4" BSPP	£7.04
Z6622101/4	10 mm	1/4" BSPP	£7.71



### DOUBLE BANJO CONNECTOR with O-ring BSPP

2520

PART NUMBER	TUBE OD	THREAD	PRICE
Z6632041/8	4 mm	1/8" BSPP	£8.88
Z6632061/8	6 mm	1/8" BSPP	£8.88
Z6632061/4	6 mm	1/4" BSPP	£9.70
Z6632081/8	8 mm	1/8" BSPP	£9.29
Z6632081/4	8 mm	1/4" BSPP	£9.92
Z6632101/4	10 mm	1/4" BSPP	£10.59

For Banjo Body see page 413

## SPECIFICATIONS

Operating pressure	0.8 to 16 bar (232 psi)
Operating temperature	-10°C to +60°C (14°F to 140°F)
Body & collet materials	Nickel plated brass
Threads	BSPP with NBR O-ring
Tube to connect	Nylon 6, 11, 12, polyurethane and polyethylene
Media	Compressed air

## STUD COUPLING with O-ring PARALLEL MALE



2520

PART NUMBER	TUBE OD	THREAD	PRICE
Z651203M3	3 mm	M3	£3.82
Z651203M5	3 mm	M5	£3.32
Z65120418M	4 mm	1/8" BSPP	£1.66
Z651206M7	6 mm	M7	£1.97
Z65120618M	6 mm	1/8" BSPP	£1.66
Z65120818M	8 mm	1/8" BSPP	£2.00

## SINGLE BANJO CONNECTOR PARALLEL



2520

PART NUMBER	TUBE OD	THREAD	PRICE
Z662103M3	3 mm	M3	£7.21
Z662103M5	3 mm	M5	£6.65

## SWIVEL RUN TEE with O-ring PARALLEL MALE



2520

PART NUMBER	TUBE OD	THREAD	PRICE
Z644203M3	3 mm	M3	£7.65
Z644203M5	3 mm	M5	£7.00

## EQUAL STRAIGHT CONNECTOR



2520

PART NUMBER	TUBE OD	PRICE
Z658003	3 mm	£6.12

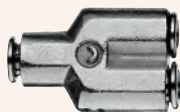
## EQUAL ELBOW



2520

PART NUMBER	TUBE OD	PRICE
Z655003	3 mm	£4.92

## 'Y' CONNECTOR



2520

PART NUMBER	TUBE OD	PRICE
Z65603	3 mm	£9.23

## PRESS FIT CARTRIDGE



2520

PART NUMBER	TUBE OD	PRICE
Z67003	3 mm	£2.65

## STUD SWIVEL ELBOW with O-ring PARALLEL MALE



2520

PART NUMBER	TUBE OD	THREAD	PRICE
Z652203M3	3 mm	M3	£5.61
Z652203M5	3 mm	M5	£5.07

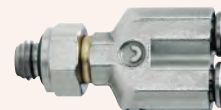
## SWIVEL BRANCH TEE with O-ring PARALLEL MALE



2520

PART NUMBER	TUBE OD	THREAD	PRICE
Z643203M3	3 mm	M3	£7.65
Z643203M5	3 mm	M5	£7.00

## SWIVEL 'Y' CONNECTOR PARALLEL



2520

PART NUMBER	TUBE OD	THREAD	PRICE
Z645203M3	3 mm	M3	£9.57
Z645203M5	3 mm	M5	£9.57

## BULKHEAD CONNECTOR



2520

PART NUMBER	TUBE OD	PRICE
Z659003	3 mm	£7.65

## EQUAL TEE



2520

PART NUMBER	TUBE OD	PRICE
Z654003	3 mm	£6.71

## STEM ADAPTOR



2520

PART NUMBER	TUBE OD	STEM OD	PRICE
Z680003-04	3 mm	4 mm	£4.29

## NYLON BLANKING PLUG



2520

PART NUMBER	TUBE	PRICE
Z69003	3 mm	£2.65

# RAPID FITTINGS FOR PLASTIC TUBE



## SPECIFICATIONS

Operating pressure	Maximum 25 bar (362 psi) depending on tubing
Operating temperature	Maximum 80°C
Materials	Nickel plated brass
Tube to connect	Nylon 6, 11, 12, polyethylene, braided PVC, polyurethane
Media	Compressed air and any fluids compatible with material specifications



2520

### STUD COUPLING BSPT MALE

PART NUMBER	TUBE OD/ID	THREAD	PRICE
Z1510531/8	5/3 mm	1/8" BSPT	£1.31
Z1510641/8	6/4 mm	1/8" BSPT	£1.04
Z1510641/4	6/4 mm	1/4" BSPT	£1.27
Z1510643/8	6/4 mm	3/8" BSPT	£1.94
Z1510641/2	6/4 mm	1/2" BSPT	£2.99
Z1510861/8	8/6 mm	1/8" BSPT	£1.31
Z1510861/4	8/6 mm	1/4" BSPT	£1.41
Z1510863/8	8/6 mm	3/8" BSPT	£2.07
Z1510861/2	8/6 mm	1/2" BSPT	£3.06
Z1510101/8	10/8 mm	1/8" BSPT	£1.78
Z1510101/4	10/8 mm	1/4" BSPT	£1.61
Z1510103/8	10/8 mm	3/8" BSPT	£2.50
Z1510101/2	10/8 mm	1/2" BSPT	£3.41
Z1510123/8	12/10 mm	3/8" BSPT	£2.59
Z1510121/2	12/10 mm	1/2" BSPT	£3.68
Z1510151/2	15/12.5 mm	1/2" BSPT	£4.09



2520

### STUD SWIVEL COUPLING BSPP MALE with sealing ring

PART NUMBER	TUBE OD/ID	THREAD	PRICE
Z1560641/8	6/4 mm	1/8" BSPP	£2.34
Z1560641/4	6/4 mm	1/4" BSPP	£2.69
Z1560861/8	8/6 mm	1/8" BSPP	£2.44
Z1560861/4	8/6 mm	1/4" BSPP	£2.72
Z1560101/4	10/8 mm	1/4" BSPP	£3.07
Z1560103/8	10/8 mm	3/8" BSPP	£3.79
Z1560123/8	12/10 mm	3/8" BSPP	£4.61



2520

### STRAIGHT CONNECTOR / REDUCER

PART NUMBER	TUBE OD/ID	TUBE OD/ID	PRICE
Z158053	5/3 mm	5/3 mm	£2.50
Z15808664	8/6 mm	6/4 mm	£2.59
Z158086	8/6 mm	8/6 mm	£2.23
Z15801064	10/8 mm	6/4 mm	£3.46
Z158012	12/10 mm	12/10 mm	£4.39
Z158015	15/12.5 mm	15/12.5 mm	£8.16



2520

### STUD COUPLING BSPP FEMALE

PART NUMBER	TUBE OD/ID	THREAD	PRICE
Z1463531/8	5/3 mm	1/8" BSPP	£1.41
Z1463641/8	6/4 mm	1/8" BSPP	£1.41
Z1463641/4	6/4 mm	1/4" BSPP	£1.78
Z1463643/8	6/4 mm	3/8" BSPP	£2.96
Z1463861/8	8/6 mm	1/8" BSPP	£1.48
Z1463861/4	8/6 mm	1/4" BSPP	£1.86
Z1463863/8	8/6 mm	3/8" BSPP	£2.99
Z1463101/8	10/8 mm	1/8" BSPP	£1.99
Z1463101/4	10/8 mm	1/4" BSPP	£2.24
Z1463103/8	10/8 mm	3/8" BSPP	£3.55
Z1463101/2	10/8 mm	1/2" BSPP	£4.86
Z1463123/8	12/10 mm	3/8" BSPP	£4.45



2520

### STUD ELBOW BSPT MALE

PART NUMBER	TUBE OD/ID	THREAD	PRICE
Z1500531/8	5/3 mm	1/8" BSPT	£1.56
Z1500641/8	6/4 mm	1/8" BSPT	£1.44
Z1500641/4	6/4 mm	1/4" BSPT	£1.65
Z1500643/8	6/4 mm	3/8" BSPT	£2.72
Z1500861/8	8/6 mm	1/8" BSPT	£1.65
Z1500861/4	8/6 mm	1/4" BSPT	£1.88
Z1500863/8	8/6 mm	3/8" BSPT	£2.72
Z1500861/2	8/6 mm	1/2" BSPT	£4.47
Z1500101/8	10/8 mm	1/8" BSPT	£2.59
Z1500101/4	10/8 mm	1/4" BSPT	£2.59
Z1500103/8	10/8 mm	3/8" BSPT	£3.22
Z1500101/2	10/8 mm	1/2" BSPT	£4.93
Z1500123/8	12/10 mm	3/8" BSPT	£4.13
Z1500121/2	12/10 mm	1/2" BSPT	£5.39
Z1500151/2	15/12.5 mm	1/2" BSPT	£5.83



2520

### BULKHEAD CONNECTOR / REDUCER

PART NUMBER	TUBE OD/ID	TUBE OD/ID	PRICE
Z159053	5/3 mm	5/3 mm	£3.38
Z15906453	6/4 mm	5/3 mm	£3.64
Z159064	6/4 mm	6/4 mm	£2.99
Z15908664	8/6 mm	6/4 mm	£4.04
Z159086	8/6 mm	8/6 mm	£3.49
Z159010	10/8 mm	10/8 mm	£4.39
Z159012	12/10 mm	12/10 mm	£5.59

# RAPID FITTINGS FOR PLASTIC TUBE

## STUD SWIVEL ELBOW with sealing ring BSPB MALE



2520

PART NUMBER	TUBE OD/ID	THREAD	PRICE
Z1541641/8	6/4 mm	1/8" BSPP	£2.72
Z1541641/4	6/4 mm	1/4" BSPP	£3.33
Z1541861/8	8/6 mm	1/8" BSPP	£3.06
Z1541861/4	8/6 mm	1/4" BSPP	£3.49
Z1541101/4	10/8 mm	1/4" BSPP	£4.45

## STUD ELBOW BSPB FEMALE



2520

PART NUMBER	TUBE OD/ID	THREAD	PRICE
Z1493641/8	6/4 mm	1/8" BSPP	£1.98
Z1493641/4	6/4 mm	1/4" BSPP	£3.17
Z1493861/8	8/6 mm	1/8" BSPP	£2.12
Z1493861/4	8/6 mm	1/4" BSPP	£3.17
Z1493101/4	10/8 mm	1/4" BSPP	£3.55
Z1493123/8	12/10 mm	3/8" BSPP	£6.23

## EQUAL ELBOW



2520

PART NUMBER	TUBE OD/ID	PRICE
Z155064	6/4 mm	£2.69
Z155086	8/6 mm	£2.72
Z155010	10/8 mm	£3.68
Z155012	12/10 mm	£5.39
Z155015	15/12.5 mm	£7.97

## RUN TEE BSPT MALE



2520

PART NUMBER	TUBE OD/ID	THREAD	PRICE
Z1420531/8	5/3 mm	1/8" BSPT	£2.72
Z1420641/8	6/4 mm	1/8" BSPT	£2.37
Z1420641/4	6/4 mm	1/4" BSPT	£2.69
Z1420861/8	8/6 mm	1/8" BSPT	£2.69
Z1420861/4	8/6 mm	1/4" BSPT	£2.84
Z1420101/8	10/8 mm	1/8" BSPT	£4.26
Z1420101/4	10/8 mm	1/4" BSPT	£4.26

## BRANCH TEE BSPT MALE



2520

PART NUMBER	TUBE OD/ID	THREAD	PRICE
Z1410531/8	5/3 mm	1/8" BSPT	£2.72
Z1410641/8	6/4 mm	1/8" BSPT	£2.37
Z1410641/4	6/4 mm	1/4" BSPT	£2.69
Z1410861/8	8/6 mm	1/8" BSPT	£2.69
Z1410861/4	8/6 mm	1/4" BSPT	£2.84
Z1410101/8	10/8 mm	1/8" BSPT	£4.26
Z1410101/2	10/8 mm	1/2" BSPT	£7.61
Z1410123/8	12/10 mm	3/8" BSPT	£6.82
Z1410121/2	12/10 mm	1/2" BSPT	£8.07
Z1410151/2	15/12.5 mm	1/2" BSPT	£9.29

## SWIVEL BRANCH TEE with sealing ring BSPB MALE



2520

PART NUMBER	TUBE OD/ID	THREAD	PRICE
Z1431641/8	6/4 mm	1/8" BSPP	£3.53
Z1431641/4	6/4 mm	1/4" BSPP	£3.97
Z1431861/8	8/6 mm	1/8" BSPP	£3.95
Z1431861/4	8/6 mm	1/4" BSPP	£4.16
Z1431101/4	10/8 mm	1/4" BSPP	£5.32

## TEE EQUAL AND REDUCING



2520

PART NUMBER	TUBE OD/ID	TUBE OD/ID	PRICE
Z154053	5/3 mm	5/3 mm	£2.87
Z154064	6/4 mm	6/4 mm	£2.84
Z154086/64	8/6 mm	6/4 mm	£3.33
Z154086	8/6 mm	8/6 mm	£3.06
Z15401064	10/8 mm	6/4 mm	£5.00
Z15401086	10/8 mm	8/6 mm	£5.00
Z154010	10/8 mm	10/8 mm	£4.43
Z154012	12/10 mm	12/10 mm	£7.71
Z154015	15/12.5 mm	15/12.5 mm	£11.41

## EQUAL CROSS



2520

PART NUMBER	TUBE OD/ID	PRICE
Z160064	6/4 mm	£4.86
Z160086	8/6 mm	£5.85



## RAPID FITTINGS FOR PLASTIC TUBE



**STEM ADAPTOR**

2520

PART NUMBER	TUBE OD/ID	STEM	PRICE
Z147064	6/4 mm	6 mm	£1.41
Z147086	8/6 mm	8 mm	£1.54



**NUT**

2520

PART NUMBER	TUBE OD/ID	THREAD	PRICE
Z17035/3	5/3 mm	M7 x 0.75	£0.42
Z170364M8	6/4 mm	M8	£0.42
Z170364M10	6/4 mm	M10	£0.45
Z170386	8/6 mm	M12	£0.50
Z170310	10/8 mm	M14	£0.65
Z170312	12/10 mm	M16	£0.98



**SINGLE BANJO RING  
FOR USE WITH BANJO BOLTS**

2520

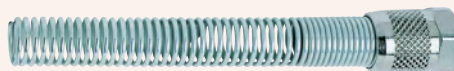
PART NUMBER	TUBE OD/ID	BOLT THREAD	PRICE
Z161053M5	5/3 mm	M5	£1.50
Z161053M6	5/3 mm	M6	£1.50
Z1610531/8	5/3 mm	1/8"	£1.91
Z161064M5	6/4 mm	M5	£1.50
Z161064M6	6/4 mm	M6	£1.50
Z1610641/8	6/4 mm	1/8"	£1.78
Z1610641/4	6/4 mm	1/4"	£1.94
Z1610643/8	6/4 mm	3/8"	£3.06
Z1610861/8	8/6 mm	1/8"	£1.94
Z1610861/4	8/6 mm	1/4"	£2.05
Z1610863/8	8/6 mm	3/8"	£2.99
Z1610101/8	10/8 mm	1/8"	£2.50
Z1610101/4	10/8 mm	1/4"	£2.54
Z1610103/8	10/8 mm	3/8"	£3.68
Z1610101/2	10/8 mm	1/2"	£4.51
Z1610123/8	12/10 mm	3/8"	£4.26
Z1610121/2	12/10 mm	1/2"	£5.19
Z1610151/2	15/12.5 mm	1/2"	£5.83



**DOUBLE BANJO RING  
FOR USE WITH BANJO BOLTS**

2520

PART NUMBER	TUBE OD/ID	BOLT THREAD	PRICE
Z162064M5	6/4 mm	M5	£3.38
Z1620641/8	6/4 mm	1/8"	£3.64
Z1620641/4	6/4 mm	1/4"	£3.85
Z1620861/8	8/6 mm	1/8"	£3.76
Z1620861/4	8/6 mm	1/4"	£3.85



**HOSE KINK PROTECTOR**

2520

PART NUMBER	TUBE OD/ID	PRICE
Z1723-6/4	6/4 mm	£1.48
Z1723-8/6	8/6 mm	£1.78
Z1723-10/8	10/8 mm	£2.35
Z1723-12/10	12/10 mm	£2.98
Z172315	15/12.5 mm	£3.95

## SUPER RAPID & RAPID BANJO BOLTS FOR PLASTIC TUBE

**BANJO BOLT  
FOR RAPID  
& SUPER RAPID FITTINGS**



2520

PART NUMBER	THREAD	PRICE
Z163101M5	M5	£1.39
Z1631011/8	1/8" BSPP	£1.39
Z1631011/4	1/4" BSPP	£1.66
Z1631013/8	3/8" BSPP	£2.34
Z1631011/2	1/2" BSPP	£4.04

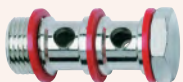
**EXTENDED BANJO BOLT  
FOR RAPID FITTINGS**



2520

PART NUMBER	THREAD	PRICE
Z1635011/8	1/8" BSPP	£1.54
Z1635011/4	1/4" BSPP	£1.98
Z1635013/8	3/8" BSPP	£2.59
Z1635011/2	1/2" BSPP	£4.69

**DOUBLE BANJO BOLT  
FOR RAPID  
& SUPER RAPID FITTINGS**



2520

PART NUMBER	THREAD	PRICE
Z1631021/8	1/8" BSPP	£2.07
Z1631021/4	1/4" BSPP	£2.92
Z1631023/8	3/8" BSPP	£3.49

**EXTENDED  
DOUBLE BANJO BOLT  
FOR RAPID FITTINGS**



2520

PART NUMBER	THREAD	PRICE
Z1635021/8	1/8" BSPP	£2.96
Z1635021/4	1/4" BSPP	£3.64
Z1635023/8	3/8" BSPP	£4.50
Z1635021/2	1/2" BSPP	£7.83

**TRIPLE BANJO BOLT  
FOR RAPID  
& SUPER RAPID FITTINGS**



2520

PART NUMBER	THREAD	PRICE
Z1631031/8	1/8" BSPP	£2.96
Z1631031/4	1/4" BSPP	£3.70
Z1631033/8	3/8" BSPP	£5.11

## DESCRIPTION

C-Truck fittings have been designed for use in the pneumatic braking system on commercial vehicles. They have been designed to allow quick tube assembly and disassembly without the need to remove the fitting. The fittings have a protective cover to keep humidity and dirt away from the collet. The insert gives the tube dimensional stability even when there are extreme changes in temperature.



2565

## STUD COUPLING METRIC MALE

PART NUMBER	TUBE	THREAD	PRICE
Z95126-M10x1	6/4	M10 x 1	£2.34
Z95126-M12x1.5	6/4	M12 x 1.5	£2.28
Z95126-M14x1.5	6/4	M14 x 1.5	£2.34
Z9512 6-M16X1.5	6/4	M16 x 1.5	£2.33
Z9512 8-M10X1	8/6	M10 x 1	£2.71
Z95128-M12x1.5	8/6	M12 x 1.5	£2.71
Z95128-M14x1.5	8/6	M14 x 1.5	£2.71
Z9512 8-M16X1.5	8/6	M16 x 1.5	£2.71
Z95128-M22x1.5	8/6	M22 x 1.5	£3.75
Z9512 10-7 M12x1.5	10/7	M12 x 1.5	£4.18
Z9512 10-7 M16x1.5	10/7	M16 x 1.5	£4.10
Z9512 10-7 M22x1.5	10/7	M22 x 1.5	£4.58
Z951210-M12x1.5	10/8	M12 x 1.5	£3.63
Z951210-M16x1.5	10/8	M16 x 1.5	£3.57
Z9512 10-M18X1.5	10/8	M18 x 1.5	£4.10
Z951210-M22x1.5	10/8	M22 x 1.5	£4.00
Z9512 12-M12X1.5	12/9	M12 x 1.5	£3.51
Z9512 12-M14X1.5	12/9	M14 x 1.5	£3.51
Z951212-M16x1.5	12/9	M16 x 1.5	£3.51
Z951212-M22x1.5	12/9	M22 x 1.5	£3.77
Z9512 15-11 M16X1.5	15/11	M16 x 1.5	£5.85
Z9512 15-11 M22X1.5	15/11	M22 x 1.5	£5.74
Z9512 15-M16X1.5	15/12	M16 x 1.5	£5.09
Z951215-M22x1.5	15/12	M22 x 1.5	£4.98
Z9512 16-12 M16X1.5	16/12	M16 x 1.5	£7.23
Z9512 16-12 M22X1.5	16/12	M22 x 1.5	£7.23
Z951216-M22x1.5	16/13	M22 x 1.5	£6.30
Z951218-M22x1.5	18/14	M22 x 1.5	£6.91



2565

## ELBOW METRIC MALE

PART NUMBER	TUBE	THREAD	PRICE
Z95026-M10x1	6/4	M10 x 1	£3.52
Z95026-M12x1.5	6/4	M12 x 1.5	£3.63
Z95026-M16x1.5	6/4	M16 x 1.5	£4.02
Z95028-M10x1	8/6	M10 x 1	£3.99
Z95028-M12x1.5	8/6	M12 x 1.5	£3.99
Z95028-M14x1.5	8/6	M14 x 1.5	£4.09
Z95028-M16x1.5	8/6	M16 x 1.5	£4.09
Z95028-M22x1.5	8/6	M22 x 1.5	£5.47
Z9502 10-7 M12X1.5	10/7	M12 x 1.5	£6.06
Z9502 10-7 M16X1.5	10/7	M16 x 1.5	£6.06
Z9502 10-7 M22X1.5	10/7	M22 x 1.5	£6.92
Z950210-M12x1.5	10/8	M12 x 1.5	£5.28
Z950210-M16x1.5	10/8	M16 x 1.5	£5.28
Z950210-M22x1.5	10/8	M22 x 1.5	£6.03
Z950212-M12x1.5	12/9	M12 x 1.5	£4.87
Z950212-M16x1.5	12/9	M16 x 1.5	£4.87
Z950212-M22x1.5	12/9	M22 x 1.5	£5.75
Z9502 15-11 M16X1.5	15/11	M16 x 1.5	£8.03
Z9502 15-11 M22X1.5	15/11	M22 x 1.5	£8.46
Z950215-M16x1.5	15/12	M16 x 1.5	£6.98
Z950215-M22x1.5	15/12	M22 x 1.5	£7.35
Z9502 16-12 M16X1.5	16/12	M16 x 1.5	£10.87
Z9502 16-12 M22X1.5	16/12	M22 x 1.5	£10.87
Z950216-M22x1.5	16/13	M22 x 1.5	£9.46
Z950218-M22x1.5	18/14	M22 x 1.5	£9.98

## SPECIFICATIONS

Working pressure	0 to 16 bar
Maximum pressure	According to the polyamide tube specifications
Tube	Polyamide: 4/2, 6/4, 8/6, 10/8, 12/9, 15/12, 16/13 and 18/14
Fluid	Compressed air
Temperature	-50°C to +100°C

## MATERIALS

Body and collet	Brass
Locking nut	Zinc plated steel
Insert	Technopolymer with PTFE sealing on thread
O-ring	NBR
Cap	NBR

## STRAIGHT CONNECTOR MALE



2565

PART NUMBER	TUBE	THREAD	PRICE
Z9510 06-02	6/4	1/8" NPTF	£2.07
Z9510 05-02	8/6	1/8" NPTF	£2.71

## STRAIGHT CONNECTOR METRIC FEMALE



2565

PART NUMBER	TUBE	THREAD	PRICE
Z9463 6-M10x1	6/4	M10 x 1	£2.60
Z9463 6-M16x1.5	6/4	M16 x 1.5	£3.51
Z9463 8-M10x1	8/6	M10 x 1	£3.17

## ELBOW MALE



2565

PART NUMBER	TUBE	THREAD	PRICE
Z9500 6-02	6/4	1/8" NPTF	£2.63
Z9500 05-02	8/6	1/8" NPTF	£3.00

## BRANCH TEE METRIC MALE



2565

PART NUMBER	TUBE	THREAD	PRICE
Z94126-M10x1	6/4	M10 x 1	£5.77
Z94126-M12x1.5	6/4	M12 x 1.5	£6.15
Z94126-M16x1.5	6/4	M16 x 1.5	£6.34
Z94128-M12x1.5	8/6	M12 x 1.5	£6.34
Z94128-M16x1.5	8/6	M16 x 1.5	£6.34
Z94128-M22x1.5	8/6	M22 x 1.5	£8.48
Z9412 10-7 M12X1.5	10/7	M12 x 1.5	£9.93
Z9412 10-7 M16X1.5	10/7	M16 x 1.5	£9.93
Z9412 10-7 M22X1.5	10/7	M22 x 1.5	£10.77
Z941210-M16x1.5	10/8	M16 x 1.5	£8.63
Z941210-M22x1.5	10/8	M22 x 1.5	£9.35
Z941212-M12x1.5	12/9	M12 x 1.5	£7.83
Z941212-M16x1.5	12/9	M16 x 1.5	£8.08
Z941212-M22x1.5	12/9	M22 x 1.5	£8.63
Z9412 15-11 M16X1.5	15/11	M16 x 1.5	£13.12
Z9412 15-11 M22X1.5	15/11	M22 x 1.5	£13.78
Z941215-M16x1.5	15/12	M16 x 1.5	£11.39
Z941215-M22x1.5	15/12	M22 x 1.5	£11.99

## STUD COUPLING METRIC MALE



2565

PART NUMBER	TUBE	THREAD	PRICE
ZD65124-M10x1	4/2	M10 x 1	£2.07

# C-TRUCK AIR BRAKE FITTINGS



## BRANCH TEE MALE

2565

PART NUMBER	TUBE	THREAD	PRICE
Z9410 6-02	6/4	1/8" NPTF	£4.82
Z9410 05-02	8/6	1/8" NPTF	£5.37



## RUN TEE METRIC MALE

2565

PART NUMBER	TUBE	THREAD	PRICE
Z94226-M10x1	6/4	M10 x 1	£5.77
Z94226-M12x1.5	6/4	M12 x 1.5	£6.34
Z94226-M16x1.5	6/4	M16 x 1.5	£6.34
Z94228-M12x1.5	8/6	M12 x 1.5	£6.34
Z94228-M16x1.5	8/6	M16 x 1.5	£6.34
Z94228-M22x1.5	8/6	M22 x 1.5	£8.48
Z942210-M16x1.5	10/8	M16 x 1.5	£8.63
Z942210-M22x1.5	10/8	M22 x 1.5	£9.35
Z942212-M12x1.5	12/9	M12 x 1.5	£8.08
Z942212-M16x1.5	12/9	M16 x 1.5	£8.08
Z942212-M22x1.5	12/9	M22 x 1.5	£8.91
Z942215-M16x1.5	15/12	M16 x 1.5	£11.99
Z942215-M22x1.5	15/12	M22 x 1.5	£11.99



## RUN TEE MALE

2565

PART NUMBER	TUBE	THREAD	PRICE
Z9420 6-02	6/4	1/8" NPTF	£4.82
Z9420 05-02	8/6	1/8" NPTF	£5.37



## STRAIGHT CONNECTOR TUBE TO TUBE

2565

PART NUMBER	TUBE	PRICE
Z9580 6	6/4	£3.62
Z9580 8	8/6	£3.79
Z9580 10-7	10/7	£5.96
Z9580 10	10/8	£5.19
Z9580 12	12/9	£4.70
Z9580 15-11	15/11	£10.41
Z9580 16-12	16/12	£11.32
Z9580 18-14	18/14	£24.47



## STRAIGHT CONNECTOR MALE

2565

PART NUMBER	TUBE	THREAD	PRICE
Z9590 8-M18x1.5	8/6	M18 x 1.5	£6.30
Z9590 12-M18x1.5	12/9	M18 x 1.5	£5.99



## STRAIGHT CONNECTOR MALE

2565

PART NUMBER	TUBE (A)	TUBE (B)	THREAD	PRICE
Z9592 8-8-M18x1	8/6	8/6	M18 x 1	£7.06
Z9592 12-8-M18x1	12/9	8/6	M18 x 1	£7.58



## TEE TUBE TO TUBE

2565

PART NUMBER	TUBE	PRICE
Z9540 6	6/4	£6.08
Z9540 8	8/6	£6.83
Z9540 10-7	10/7	£10.88
Z9540 10	10/8	£9.47
Z9540 12	12/9	£8.58
Z9540 15-11	15/11	£15.66



## BULKHEAD CONNECTOR MALE

2565

PART NUMBER	THREAD (A)	THREAD (B)	PRICE
ZD2512 M22-M16	M22 x 1.5	M16 x 1.5	£5.65
ZD2502 M22-M22	M22 x 1.5	M22 x 1.5	£4.45



## STEM ADAPTOR MALE

2565

PART NUMBER	TUBE ID	THREAD	PRICE
ZD2602 12-M16	12.5 mm	M16 x 1.5	£1.48
ZD2602 12-M22	12.5 mm	M22 x 1.5	£2.34



## BLANKING PLUG MALE

2565

PART NUMBER	THREAD	PRICE
ZD2612 M12	M12 x 1.5	£0.81
ZD2612 M16	M16 x 1.5	£0.92
ZD2612 M22	M22 x 1.5	£1.71



## ELBOW MALE / FEMALE

2565

PART NUMBER	MALE THREAD	FEMALE THREAD	PRICE
ZD2022 M16M16	M16 x 1.5	M16 x 1.5	£3.62
ZD2022 M16M22	M22 x 1.5	M16 x 1.5	£4.32
ZD2022 M22M22	M22 x 1.5	M22 x 1.5	£6.84



**BRANCH TEE**  
FEMALE / MALE

2565

PART NUMBER	FEMALE THREAD	MALE THREAD	PRICE
ZD2062 M16M12	M16 x 1.5	M12 x 1.5	£5.32
ZD2062 M16M16	M16 x 1.5	M16 x 1.5	£6.52
ZD2062 M16M22	M16 x 1.5	M22 x 1.5	£5.94
ZD2062 M22M22	M22 x 1.5	M22 x 1.5	£7.09



**BLEED POINT**  
MALE

2565

PART NUMBER	THREAD (A)	PRICE
ZVDC M22x1.5	M22 x 1.5	£5.26



**RUN TEE**  
FEMALE / MALE

2565

PART NUMBER	FEMALE THREAD	MALE THREAD	PRICE
ZD2072 M16M12	M16 x 1.5	M12 x 1.5	£5.21
ZD2072 M16M16	M16 x 1.5	M16 x 1.5	£5.35
ZD2072 M16M22	M16 x 1.5	M22 x 1.5	£6.23
ZD2072 M22M22	M22 x 1.5	M22 x 1.5	£7.09



**DISCONNECTION TOOL**

2565

PART NUMBER	TUBE OD	PRICE
ZDRK 6	6 mm	£1.23
ZDRK 8	8 mm	£1.23
ZDRK 10	10 mm	£1.23
ZDRK 12	12 mm	£1.23
ZDRK 15	15 mm	£1.23
ZDRK 16	16 mm	£1.23
ZDRK 18	18 mm	£1.23



**TEE**  
FEMALE

2565

PART NUMBER	THREAD	PRICE
ZS2003 M22	M22 x 1.5	£5.55



**TUBE CUTTERS**

9140

PART NUMBER	FOR USE WITH	PRICE
ZPNZ12	Tube up to 12 mm	£22.69
ZPNZ25	Tube up to 25 mm	£24.73



**TEST POINT**  
MALE

2565

PART NUMBER	THREAD (A)	THREAD (B)	PRICE
ZVPC M16M16	M16 x 1.5	M16 x 1.5	£5.26
ZVPC M22M16	M22 x 1.5	M16 x 1.5	£5.26



### MALE / FEMALE FITTINGS

D2077 Model

2565

PART NUMBER	MALE THREAD	FEMALE THREAD	PRICE
ZD2077 M16M16	M16 x 1.5	M16 x 1.5	£8.08
ZD2077 M16M22	M16 x 1.5	M22 x 1.5	£8.50



### Y CONNECTOR

9450 Model

2565

PART NUMBER	TUBE OD	THREAD	PRICE
Z94508-M16x1-5	8/6 mm	M16 x 1.5	£8.17
Z945012-M16x1-5	12/9 mm	M16 x 1.5	£11.99
Z945012-M22x1-5	12/9 mm	M22 x 1.5	£12.13



### EQUAL CROSS

D2032 Model

2565

PART NUMBER	THREAD	PRICE
ZD2032 M16M16	M16 x 1.5	£8.48



### MALE / FEMALE INFLATION VALVE

V604 Model

2565

PART NUMBER	MALE	FEMALE	PRICE
ZV604M22x1-5-S01	M16 x 1.5	M22 x 1.5	£24.05



### EQUAL FEMALE TEE

D2003...S01 Model

2565

PART NUMBER	THREAD	PRICE
ZD2003M16x1-5-S01	M16 x 1.5	£6.27



### TUBE TO TUBE ELBOW

2565

PART NUMBER	TUBE OD	TUBE ID	PRICE
Z95506	6 mm	4 mm	£4.13
Z95508	8 mm	6 mm	£4.35
Z955010/7	10 mm	7 mm	£7.64
Z955010	10 mm	8 mm	£7.06
Z955012	12 mm	9 mm	£6.36



### ELBOW

9402 Model

2565

PART NUMBER	TUBE OD	THREAD	PRICE
Z940212-M16x1-5	12 mm	M16 x 1.5	£9.10
Z940212-M22x1-5	12 mm	M22 x 1.5	£9.28



### FEMALE MANIFOLD

2565

PART NUMBER	TUBE OD	THREAD	PRICE
ZD3043 M16M16	21 mm	M16 x 1.5	£10.42

PRECISION REGULATORS



2505

SERIES PR  
SELF RELIEVING

PART NUMBER	PORT	OUTLET PRESSURE	PRICE
ZPR104-M02	1/4"	0.05 to 2 bar	£144.25
ZPR104-M04	1/4"	0.05 to 4 bar	£144.25
ZPR104-M07	1/4"	0.05 to 7 bar	£144.25

DIGITAL GAUGES

FEATURES

- Pressure display unit
- Easy and fast read out with digital display
- 4 user programmable pressure units available
- Power saving mode
- Back light
- Dust proof and splash proof
- 2 m cable with unshielded 2 pole



2505

SERIES PG  
WITH CABLE

PART NUMBER	TYPE	THREAD SIZE	PRESSURE	PRICE
ZPG010-PB-1/8-2	Pressure gauge	1/8" BSPP	15 bar	£60.77
ZPG001-VB-1/8-2	Vacuum gauge	1/8" BSPP	3 bar	£60.77

DIGITAL GAUGES

FEATURES

- Pressure display unit
- Easy and fast read out with digital display
- 4 user programmable pressure units available
- Power saving mode
- Back light
- Dust proof and splash proof
- Battery powered digital gauges

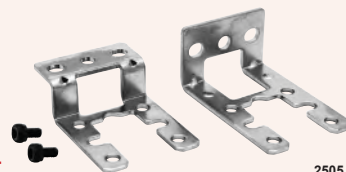


2505

SERIES PG  
BATTERY POWERED

PART NUMBER	TYPE	THREAD SIZE	PRESSURE	PRICE
ZPG010-PB-1/8	Pressure gauge	1/8" BSPP	15 bar	£37.18
ZPG001-VB-1/8	Vacuum gauge	1/8" BSPP	3 bar	£37.18
ZPG010-PB-1/4	Pressure gauge	1/4" BSPP	15 bar	£37.18
ZPG001-VB-1/4	Vacuum gauge	1/4" BSPP	3 bar	£37.18

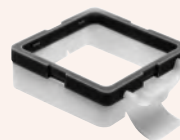
PG PRESSURE GAUGE ACCESSORIES



2505

MOUNTING BRACKET

PART NUMBER	DESCRIPTION	PRICE
ZPG-B	Mounting bracket	£7.01



2505

PANEL MOUNT ADAPTOR

PART NUMBER	DESCRIPTION	PRICE
ZPG-F	Panel mount adaptor	£7.01