

03 RISCALDAMENTO HEATING

DALLAS

Valvole e detentori in ottone filetto ISO 228/1, per TUBO FERRO
Lockshield and brass valves ISO 228/1 thread, for IRON PIPE

91



W4000

Valvole e detentori in ottone filetto ISO 228/1, adattatori per TUBO PEX PEX/AL/PEX
e TUBO RAME
*Lockshield and brass valves ISO 228/1 thread, adapter for COPPER PIPE PEX
and PEX/AL/PEX HOSE*

95



FLORIDA

Collettori di distribuzione
Distribution manifolds

99



ILLINOIS

Valvole di sicurezza, manometri e sfiati
Safety valves, gauges and air breathers

103



DALLAS

VALVOLE E DETENTORI IN OTTONE FILETTO ISO 228/1, PER TUBO FERRO
LOCKSHIELD AND BRASS VALVES ISO 228/1 THREAD, FOR IRON PIPE

LIMITI DI TEMPERATURA: 110 °C - LIMITI DI PRESSIONE: PN10
TEMPERATURE RATING: 110 °C - PRESSURE RATING: PN10



8801

Valvola manuale femmina/bocchettone
Manual valve female/straight union

Codice Code	G1 ISO 228/1	G2 ISO 228/1	Prezzo € Price €	Conf. Unit/Box
88010004	1/2"	1/2"		1/25
88010005	3/4"	3/4"		1/20



8805

Detentore manuale femmina/bocchettone
Lockshield female/straight union

Codice Code	G1 ISO 228/1	G2 ISO 228/1	Prezzo € Price €	Conf. Unit/Box
88050004	1/2"	1/2"		1/30
88050005	3/4"	3/4"		1/20



8803

Valvola manuale femmina/bocchettone
Manual valve female/straight union

Codice Code	G1 ISO 228/1	G2 ISO 228/1	Prezzo € Price €	Conf. Unit/Box
88030004	1/2"	1/2"		1/25
88030005	3/4"	3/4"		1/20



8807

Detentore manuale femmina/bocchettone
Lockshield female/straight union

Codice Code	G1 ISO 228/1	G2 ISO 228/1	Prezzo € Price €	Conf. Unit/Box
88070004	1/2"	1/2"		1/30
88070005	3/4"	3/4"		1/20



8801P

Valvola manuale femmina/bocchettone preguarnito
Manual valve female/pre-sealed union

Codice Code	G1 ISO 228/1	G2 ISO 228/1	Prezzo € Price €	Conf. Unit/Box
8801P004	1/2"	1/2"		1/25
8801P005	3/4"	3/4"		1/20



8805P

Detentore manuale femmina/bocchettone preguarnito
Lockshield female/pre-sealed union

Codice Code	G1 ISO 228/1	G2 ISO 228/1	Prezzo € Price €	Conf. Unit/Box
8805P004	1/2"	1/2"		1/30
8805P005	3/4"	3/4"		1/20



8803P

Valvola manuale femmina/bocchettone preguarnito
Manual valve female/pre-sealed union

Codice Code	G1 ISO 228/1	G2 ISO 228/1	Prezzo € Price €	Conf. Unit/Box
8803P004	1/2"	1/2"		1/25
8803P005	3/4"	3/4"		1/20



8807P

Detentore manuale femmina/bocchettone preguarnito
Lockshield female/pre-sealed union

Codice Code	G1 ISO 228/1	G2 ISO 228/1	Prezzo € Price €	Conf. Unit/Box
8807P004	1/2"	1/2"		1/30
8807P005	3/4"	3/4"		1/20



KIT ANTEA

Valvola manuale femmina/bocchettone preguarnito - Detentore manuale femmina/bocchettone preguarnito
Manual valve female/pre-sealed union - Lockshield female/pre-sealed union

Codice Code	G1 ISO 228/1	G2 ISO 228/1	Prezzo € Price €	Conf. Unit/Box
88018805P1	1/2"	1/2"		1/8
88018805P2	3/4"	3/4"		1/8



KIT YMIR

Valvola manuale femmina/bocchettone preguarnito - Detentore manuale femmina/bocchettone preguarnito
Manual valve female/pre-sealed union - Lockshield female/pre-sealed union

Codice Code	G1 ISO 228/1	G2 ISO 228/1	Prezzo € Price €	Conf. Unit/Box
88038807P1	1/2"	1/2"		1/8
88038807P2	3/4"	3/4"		1/8



8842

Valvola termostattizzabile femmina/bocchettone preguarnito
Convertible valve female/pre-sealed union

Codice Code	G1 ISO 228/1	G2 ISO 228/1	Prezzo € Price €	Conf. Unit/Box
88420008	1/2"	1/2"		1/25



8840

Valvola termostattizzabile femmina/bocchettone preguarnito
Convertible valve female/pre-sealed union

Codice Code	G1 ISO 228/1	G2 ISO 228/1	Prezzo € Price €	Conf. Unit/Box
88400008	1/2"	1/2"		1/25



KIT CALYPSO

Valvola termostaticabile femmina/bocchettone preguarnito - Detentore femmina/bocchettone preguarnito - Testa termostatica bianca

Convertible valve female/pre-sealed union - Lockshield female/pre-sealed union - White thermostatic control head

Codice Code	G1 ISO 228/1	G2 ISO 228/1	Prezzo € Price €	Conf. Unit/Box
88428805P1	1/2"	1/2"		1/8



KIT DIONE

Valvola termostaticabile femmina/bocchettone preguarnito - Detentore femmina/bocchettone preguarnito - Testa termostatica bianca

Convertible valve female/pre-sealed union - Lockshield female/pre-sealed union - White thermostatic control head

Codice Code	G1 ISO 228/1	G2 ISO 228/1	Prezzo € Price €	Conf. Unit/Box
88408807P1	1/2"	1/2"		1/8



8850

Testa termostatica bianca
White thermostatic control head

Codice Code	Prezzo € Price €	Conf. Unit/Box
88500001		1/30



8850C

Testa termostatica cromata
Chrome-plated thermostatic control head

Codice Code	Prezzo € Price €	Conf. Unit/Box
8850C001		1/1



8851

Rosetta universale in plastica
Universal plastic washer

Codice Code	Prezzo € Price €	Conf. Unit/Box
88510001		1/60

W4000

**VALVOLE E DETENTORI IN OTTONE FILETTO ISO 228/1, ADATTATORI PER TUBO
PEX, PEX/AL/PEX E TUBO RAME
LOCKSHIELD AND BRASS VALVES ISO 228/1 THREAD, ADAPTER FOR COPPER PIPE
PEX AND PEX/AL/PEX HOSE**

**LIMITI DI TEMPERATURA: 110 °C - LIMITI DI PRESSIONE: PN10
TEMPERATURE RATING: 110 °C - PRESSURE RATING: PN10**



8802

Valvola manuale attacco universale/bocchettone
Manual valve multiple joint/straight union

Codice Code	G1 ISO 228/1	G2 ISO 228/1	Prezzo € Price €	Conf. Unit/Box
88020002	1/2"	1/2" (Ø16)		1/30



8806

Detentore manuale attacco universale/bocchettone
Lockshield multiple joint/straight union

Codice Code	G1 ISO 228/1	G2 ISO 228/1	Prezzo € Price €	Conf. Unit/Box
88060002	1/2"	1/2" (Ø16)		1/30



8804

Valvola manuale attacco universale/bocchettone
Manual valve multiple joint/straight union

Codice Code	G1 ISO 228/1	G2 ISO 228/1	Prezzo € Price €	Conf. Unit/Box
88040002	1/2"	1/2" (Ø16)		1/25



8808

Detentore manuale attacco universale/bocchettone
Lockshield multiple joint/straight union

Codice Code	G1 ISO 228/1	G2 ISO 228/1	Prezzo € Price €	Conf. Unit/Box
88080002	1/2"	1/2" (Ø16)		1/30



8802P

Valvola manuale attacco universale/bocchettone preguarnito
Manual valve multiple joint/pre-sealed union

Codice Code	G1 ISO 228/1	G2 ISO 228/1	Prezzo € Price €	Conf. Unit/Box
8802P002	1/2"	1/2" (Ø16)		1/30



8806P

Detentore manuale attacco universale/bocchettone preguarnito
Lockshield multiple joint/pre-sealed union

Codice Code	G1 ISO 228/1	G2 ISO 228/1	Prezzo € Price €	Conf. Unit/Box
8806P002	1/2"	1/2" (Ø16)		1/30



8804P

Valvola manuale attacco universale/bocchettone preguarnito

Manual valve multiple joint/pre-sealed union

Codice Code	G1 ISO 228/1	G2 ISO 228/1	Prezzo € Price €	Conf. Unit/Box
8804P002	1/2"	1/2" (Ø16)		1/25



8808P

Detentore manuale attacco universale/bocchettone preguarnito

Lockshield multiple joint/pre-sealed union

Codice Code	G1 ISO 228/1	G2 ISO 228/1	Prezzo € Price €	Conf. Unit/Box
8808P002	1/2"	1/2" (Ø16)		1/30



KIT CALLISTO

Valvola attacco universale/bocchettone preguarnito - Detentore manuale attacco universale/bocchettone preguarnito - Adattore

Straight valve multiple joint/pre-sealed union - Lockshield multiple joint/pre-sealed union - Adapter

Codice Code	G1 ISO 228/1	G2 ISO 228/1	Prezzo € Price €	Conf. Unit/Box
88028806P1	1/2"	1/2" (Ø16)		1/8



KIT TITANO

Valvola attacco universale/bocchettone preguarnito - Detentore manuale attacco universale/bocchettone preguarnito - Adattore

Manual valve multiple joint/pre-sealed union - Lockshield multiple joint/pre-sealed union - Adapter

Codice Code	G1 ISO 228/1	G2 ISO 228/1	Prezzo € Price €	Conf. Unit/Box
88048808P1	1/2"	1/2" (Ø16)		1/8



KIT JUPITER

Valvola termostattizzabile e detentore attacco universale - bocchettone preguarnito - Adattore - Testa termostatica bianca

Convertible valve and lockshield, multiple joint/pre-sealed union - Adapter - White thermostatic control head

Codice Code	G1	G2 ISO 228/1	Prezzo € Price €	Conf. Unit/Box
88438806P1	1/2"	1/2" (Ø16)		1/8



KIT ORBITER

Valvola termostattizzabile e detentore, attacco universale/bocchettone preguarnito - Adattore - Testa termostatica bianca

Convertible valve and lockshield, multiple joint/pre-sealed union - Adapter - White thermostatic control head

Codice Code	G1	G2 ISO 228/1	Prezzo € Price €	Conf. Unit/Box
88418808P1	1/2"	1/2" (Ø16)		1/8



8843

Valvola termostaticabile attacco universale/bocchettone preguarnito
Convertible valve multiple joint/pre-sealed union

Codice Code	G1 ISO 228/1	G2 ISO 228/1	Prezzo € Price €	Conf. Unit/Box
88430005	1/2"	1/2" (Ø16)		1/30



8841

Valvola termostaticabile attacco universale/bocchettone preguarnito
Convertible valve multiple joint/pre-sealed union

Codice Code	G1 ISO 228/1	G2 ISO 228/1	Prezzo € Price €	Conf. Unit/Box
88410005	1/2"	1/2" (Ø16)		1/30



8850

Testa termostatica bianca
White thermostatic control head

Codice Code	Prezzo € Price €	Conf. Unit/Box
88500001		1/30



8850C

Testa termostatica cromata
Chrome-plated thermostatic control head

Codice Code	Prezzo € Price €	Conf. Unit/Box
8850C001		1/1



8851

Rosetta universale in plastica
Universal plastic washer

Codice Code	Prezzo € Price €	Conf. Unit/Box
88510001		1/60



4100

Adattatore a stringere per tubo multistrato
Adapter for multilayer pipes

Codice Code	G ISO 228/1	Prezzo € Price €	Conf. Unit/Box
41000001	1/2" x Ø16 x 2		1/80



4120

Adattatore tubo rame con ogiva e guarnizione di tenuta incorporata
Adapter copper pipe with ogive and incorporated gasket

Codice Code	G ISO 228/1	Prezzo € Price €	Conf. Unit/Box
41200001	1/2" x 10		1/100
41200002	1/2" x 12		1/80
41200003	1/2" x 14		24/96
41200004	1/2" x 15		24/96

FLORIDA

COLLETTORI DI DISTRIBUZIONE
DISTRIBUTION MANIFOLDS

LIMITI DI TEMPERATURA: -20 °C +110 °C - LIMITI DI PRESSIONE: PN16
TEMPERATURE RATING: -20 °C +110 °C - PRESSURE RATING: PN16



4200

Collettore di distribuzione a vitone, 2 vie interasse 36 mm
Distribution manifolds, with shut-off valves 2 outlets dist. 36 mm

Codice Code	G ISO 228/1	Prezzo € Price €	Conf. Unit/Box
4200001	3/4" x 1/2"(Ø16)		1/8
4200002	1" x 1/2"(Ø16)		1/8



4201

Collettore di distribuzione a vitone, 3 vie interasse 36 mm
Distribution manifolds, with shut-off valves 3 outlets dist. 36 mm

Codice Code	G ISO 228/1	Prezzo € Price €	Conf. Unit/Box
4201001	3/4" x 1/2"(Ø16)		6/24
4201002	1" x 1/2"(Ø16)		5/20



4202

Collettore di distribuzione a vitone, 4 vie interasse 36 mm
Distribution manifolds, with shut-off valves 4 outlets dist. 36 mm

Codice Code	G ISO 228/1	Prezzo € Price €	Conf. Unit/Box
4202001	3/4" x 1/2"(Ø16)		4/16
4202002	1" x 1/2"(Ø16)		4/16



4210

Collettore di distribuzione a sfera, 2 vie interasse 36 mm
Distribution manifolds, with ball valve 2 outlets dist. 36 mm

Codice Code	G ISO 228/1	Prezzo € Price €	Conf. Unit/Box
4210G001	3/4" x 1/2"(Ø16)		4/32
4210G002	1" x 1/2"(Ø16)		4/32



4211

Collettore di distribuzione a sfera, 3 vie interasse 36 mm
Distribution manifolds, with ball valve 3 outlets dist. 36 mm

Codice Code	G ISO 228/1	Prezzo € Price €	Conf. Unit/Box
4211G001	3/4" x 1/2"(Ø16)		4/16
4211G002	1" x 1/2"(Ø16)		4/16

**4220**

Collettore di distribuzione lineare a 2 vie interasse 36 mm
Linear distribution manifold 2 outlets dist. 36 mm

Codice Code	G ISO 228/1	Prezzo € Price €	Conf. Unit/Box
4220G001	3/4" x 1/2"(Ø16)		1/50
4220G002	1" x 1/2"(Ø16)		1/40

**4221**

Collettore di distribuzione lineare a 3 vie interasse 36 mm
Linear distribution manifold 3 outlets dist. 36 mm

Codice Code	G ISO 228/1	Prezzo € Price €	Conf. Unit/Box
4221G001	3/4" x 1/2"(Ø16)		1/40
4221G002	1" x 1/2"(Ø16)		1/30

**4222**

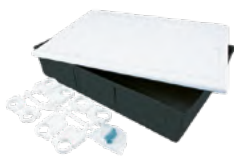
Collettore di distribuzione lineare a 4 vie interasse 36 mm
Linear distribution manifold 4 outlets dist. 36 mm

Codice Code	G ISO 228/1	Prezzo € Price €	Conf. Unit/Box
4222G001	3/4" x 1/2"(Ø16)		1/30
4222G002	1" x 1/2"(Ø16)		1/25

**4223**

Collettore di distribuzione lineare a 5 vie interasse 36 mm
Linear distribution manifold 5 outlets dist. 36 mm

Codice Code	G ISO 228/1	Prezzo € Price €	Conf. Unit/Box
4223G001	3/4" x 1/2"(Ø16)		1/25
4223G002	1" x 1/2"(Ø16)		1/20

**4230**

Cassetta universale in plastica per collettori
Universal boxes plastic for manifolds

Codice Code	Tipo Size	Prezzo € Price €	Conf. Unit/Box
42300002	310 x 295 x 80		1/5
42300003	420 x 295 x 80		1/5
42300004	510 x 295 x 80		1/5
42300005	620 x 295 x 80		1/5

**4100**

Adattatore per tubo multistrato a stringere
Adapter for multilayer tightened pipes

Codice Code	G ISO 228/1	Prezzo € Price €	Conf. Unit/Box
41000001	1/2" x Ø16 x 2		1/80

**4120**

Adattatore tubo rame con ogiva e guarnizione di tenuta incorporata
Adapter copper pipe with ogive and incorporated gasket

Codice Code	G ISO 228/1	Prezzo € Price €	Conf. Unit/Box
41200001	1/2" x 10		1/100
41200002	1/2" x 12		1/80
41200003	1/2" x 14		24/96
41200004	1/2" x 15		24/96

ILLINOIS SOMITI

VALVOLE DI SICUREZZA, MANOMETRI E SFIATI
SAFETY VALVES, GAUGES AND AIR BREATHERS

LIMITI DI TEMPERATURA: ACQUA 0 °C + 90 °C ARIA -20 °C + 110 °C - LIMITI DI
PRESSIONE: PN6 ÷ PN25
TEMPERATURE RATING: WATER 0 °C + 90 °C AIR -20 °C + 110 °C
PRESSURE RATING: PN6 ÷ PN25



1003

Valvolino per radiatori anello teflon
Manual air relief valve for heating elements

Codice Code	G ISO 228/1	Prezzo € Price €	Conf. Unit/Box
10030001	1/4"		200/400
10030002	3/8"		100/400
10030003	1/2"		100/400



1054

Valvola di sicurezza per scaldabagni
Safety valve for water heaters

Codice Code	G ISO 228/1	Prezzo € Price €	Conf. Unit/Box
10540001	1/2"		40/160



1055

Valvola di sicurezza con leva per scaldabagni
Safety valve with handle for water heaters

Codice Code	G ISO 228/1	Prezzo € Price €	Conf. Unit/Box
10550001	1/2"		40/160



1002

Valvola sfogo aria automatica
Automatic air breather valve

Codice Code	G ISO 228/1	PN	Prezzo € Price €	Conf. Unit/Box
10020001	1/4"	10		25/100
10020002	3/8"	10		1/50
10020003	1/2"	10		1/50
10020005	3/4"	10		25/25
10020006	1"	10		10/40



1070

Valvola di sfiato con scarico laterale
Air breather valve with side exhaust

Codice Code	G ISO 228/1	PN	Prezzo € Price €	Conf. Unit/Box
10700001	3/8"	10		10/40
10700002	1/2"	10		15/60



1071

Valvola di sfiato con attacco laterale
Air breather valve with side port

Codice Code	G ISO 228/1	PN	Prezzo € Price €	Conf. Unit/Box
10710001	3/8"	10		6/24
10710002	1/2"	10		15/60



902

Minivalvola di non ritorno maschio/femmina (per art. 1002-1070-1071)

Mini non-return valve male/female (for art. 1002-1070-1071)

Codice Code	G ISO 228/1	PN	Prezzo € Price €	Conf. Unit/Box
09020001	3/8"	10		20/800
09020002	1/2"	10		150/600



985

Manometro attacco radiale

Pressure gauge with radial coupling

Codice Code	BAR	PN	Prezzo € Price €	Conf. Unit/Box
09850001	6	6		10/40
09850002	10	10		6/24
09850003	16	16		10/40



986

Manometro con attacco posteriore

Gauge with rear coupling

Codice Code	BAR	PN	Prezzo € Price €	Conf. Unit/Box
09860001	6	6		6/24
09860002	10	10		12/48
09860003	16	16		6/24



1062

Valvola di sicurezza a membrana femmina/femmina

Membrane safety valve female/female

Codice Code	G ISO 228/1 Tar. BAR	PN	Prezzo € Price €	Conf. Unit/Box
10620003	1/2" x 1,5	10		20/80
10620004	1/2" x 1,8	10		20/80
10620005	1/2" x 2	10		20/80
10620006	1/2" x 2,5	10		20/80
10620007	1/2" x 3	10		20/80
10620008	1/2" x 3,5	10		20/80
10620009	1/2" x 4	10		20/80
10620010	1/2" x 5	10		20/80
10620001	1/2" x 6	10		20/80
10620011	1/2" x 7	10		20/80
10620002	1/2" x 8	10		20/80
10620012	1/2" x 10	10		20/80
10620013	3/4" x 1,5	10		15/60
10620014	3/4" x 1,8	10		15/60
10620015	3/4" x 2	10		15/60
10620016	3/4" x 2,5	10		15/60
10620017	3/4" x 3	10		15/60
10620018	3/4" x 3,5	10		15/60
10620019	3/4" x 4	10		15/60
10620020	3/4" x 6	10		15/60
10620021	3/4" x 7	10		15/60
10620022	3/4" x 8	10		15/60
10620023	3/4" x 10	10		15/60
10620024	1" x 1,5	10		10/40
10620025	1" x 1,8	10		10/40
10620026	1" x 2,5	10		10/40
10620027	1" x 3	10		10/40
10620028	1" x 4	10		10/40
10620029	1" x 6	10		10/40



1063

Valvola di sicurezza a membrana maschio/femmina
Membrane safety valve male/female

Codice Code	G ISO 228/1 Tar. BAR	PN	Prezzo € Price €	Conf. Unit/Box
10630003	1/2" x 1,5	10		20/80
10630004	1/2" x 1,8	10		20/80
10630005	1/2" x 2	10		20/80
10630006	1/2" x 2,5	10		20/80
10630007	1/2" x 3	10		20/80
10630008	1/2" x 3,5	10		20/80
10630009	1/2" x 4	10		20/80
10630010	1/2" x 5	10		20/80
10630001	1/2" x 6	10		20/80
10630011	1/2" x 7	10		20/80
10630002	1/2" x 8	10		20/80
10630012	1/2" x 10	10		20/80



1064

Valvola di sicurezza a membrana maschio/femmina attacco manometro
Membrane safety valve with gauge port male/female

Codice Code	G ISO 228/1 Tar. BAR	PN	Prezzo € Price €	Conf. Unit/Box
10640002	1/2" x 1,5	10		20/80
10640003	1/2" x 1,8	10		20/80
10640004	1/2" x 2	10		20/80
10640005	1/2" x 2,5	10		20/80
10640001	1/2" x 3	10		20/80
10640006	1/2" x 3,5	10		20/80
10640007	1/2" x 4	10		20/80
10640008	1/2" x 6	10		20/80



1065

Valvola di sicurezza a membrana femmina/femmina attacco manometro
Safety valve with gauge port female/female

Codice Code	G ISO 228/1 Tar. BAR	PN	Prezzo € Price €	Conf. Unit/Box
10650001	1/2" x 1,5	10		20/80
10650002	1/2" x 1,8	10		20/80
10650003	1/2" x 2	10		20/80
10650004	1/2" x 2,5	10		20/80
10650005	1/2" x 3	10		20/80
10650006	1/2" x 3,5	10		20/80
10650007	1/2" x 4	10		20/80
10650008	1/2" x 6	10		20/80

04 RACCORDI FITTINGS

04A Raccordi a compressione per tubo PE Compression coupler PE hose

VALVOPAT - SERIES 3000

Raccordi a compressione per tubo PE - filetto ISO 7/1 (UNI EN 10226)
Brass compression coupler PE hose - ISO 7/1 (UNI EN 10226) thread

111



VALVOFIT - SERIES 8000

Raccordi a compressione per tubo PE - filetto ISO 228/1
Brass compression coupler PE hose - ISO 228/1 thread

117



MILWAUKEE - SERIES 7100

Raccordi a compressione per tubo PE - filetto ISO 228/1
Brass compression coupler PE hose - ISO 228/1 thread

121



04B Raccordi per tubo ferro e raccordi generici Coupler for iron pipe and general coupler

VALVOFER

Raccordi in ottone per tubo ferro - filetto ISO 228/1 a norma EN 1254-3
Brass coupler for iron pipe - ISO 228/1 thread according to EN 1254-3

125



ST. LOUIS

Raccorderia generica in ottone giallo e cromato - filetto ISO 228/1
General yellow and chrome-plated brass fitting - ISO 228/1 thread

129



04C Raccordi per tubo multistrato Coupler for multilayer pipe

NORTH CAROLINA - SERIES 4300W

Raccordi a pressione per tubo multistrato - acqua
Press-fittings for multilayer pipe - water

143



SOUTH CAROLINA - SERIES 4300G

Raccordi a pressione per tubo multistrato - gas
Press-fittings for multilayer pipe - gas

149



Utensili per serie "NORTH CAROLINA" e "SOUTH CAROLINA"
Tools for "NORTH CAROLINA" and "SOUTH CAROLINA" series

153



VALVOPAT

SERIES 3000

**RACCORDI A COMPRESSIONE PER TUBO PE
FILETTO ISO 7/1 (UNI EN 10226)
BRASS COMPRESSION COUPLER PE HOSE
ISO 7/1 (UNI EN 10226) THREAD**

**LIMITI DI TEMPERATURA: -20 °C +80 °C - LIMITI DI PRESSIONE: PN30
TEMPERATURE RATING: -20 °C +80 °C - PRESSURE RATING: PN30**

04A "VALVOPAT" RACCORDI A COMPRESSIONE PER TUBO PE "VALVOPAT" BRASS COMPRESSION COUPLER PE HOSE

FILETTO ISO 7/1 (UNI EN 10226)
ISO 7/1 (UNI EN 10226) THREAD



3000

Raccordo diritto maschio
Straight male coupler

Codice Code	Ø Tubo Ø Pipe	R ISO 7/1	Prezzo € Price €	Conf. Unit/Box
30000007	20	1/2"		30/120
30000011	25	1/2"		20/80
30000012	25	3/4"		20/80
30000015	25	1"		20/80
30000016	32	3/4"		12/48
30000018	32	1"		12/48
30000020	32	1"1/4		12/48
30000023	40	1"1/4		8/32
30000027	50	1"1/2		6/24
30000032	63	2"		3/12
30000038	75	2"1/2		8/8
30000042	90	3"		6/6
30000001	110	4"		3/3

Versione flangiata/ Flange version



3005

Raccordo diritto femmina
Straight female coupler

Codice Code	Ø Tubo Ø Pipe	Rp ISO 7/1	Prezzo € Price €	Conf. Unit/Box
30050006	20	1/2"		30/120
30050011	25	1/2"		20/80
30050012	25	3/4"		20/80
30050015	32	3/4"		12/48
30050016	32	1"		12/48
30050020	40	1"1/4		8/32
30050024	50	1"1/2		6/24
30050028	63	2"		3/12
30050031	75	2"1/2		8/8
30050033	90	3"		6/6
30050001	110	4"		2/4

Versione flangiata/ Flange version



3007

Raccordo con dado mobile
Swivel nut coupler

Codice Code	Ø Tubo Ø Pipe	G ISO 228/1	Prezzo € Price €	Conf. Unit/Box
30070005	25	3/4"		15/60

04A "VALVOPAT" RACCORDI A COMPRESSIONE PER TUBO PE "VALVOPAT" BRASS COMPRESSION COUPLER PE HOSE

FILETTO ISO 7/1 (UNI EN 10226)
ISO 7/1 (UNI EN 10226) THREAD



3015

Raccordo di accoppiamento
Connecting coupler

Codice Code	Ø Tubo Ø Pipe	Prezzo € Price €	Conf. Unit/Box
30150005	20 x 20		20/80
30150008	25 x 25		15/60
30150010	32 x 32		10/40
30150012	40 x 40		4/16
30150015	50 x 50		3/12
30150018	63 x 63		2/8
30150020	75 x 75		4/4
30150022	90 x 90		3/3
30150024	110 x 110		2/2

Versione flangiata/ Flange version



3040

Raccordo di accoppiamento prolungato
Extended connecting coupler

Codice Code	Ø Tubo Ø Pipe	Prezzo € Price €	Conf. Unit/Box
30400001	20 x 20		20/80
30400002	25 x 25		10/40
30400003	32 x 32		5/20
30400004	40 x 40		3/12
30400005	50 x 50		2/8
30400006	63 x 63		1/4



3025

Raccordo a "T" femmina
Female tee coupler

Codice Code	Ø Tubo Ø Pipe	Rp ISO 7/1	Prezzo € Price €	Conf. Unit/Box
30250003	20	1/2"		15/60
30250005	25	1/2"		10/40
30250006	25	3/4"		10/40
30250010	32	1"		5/20
30250015	40	1"1/4		3/12
30250020	50	1"1/2		1/4
30250023	63	2"		1/4
30250025	75	2"1/2		2/2
30250027	90	2"1/2		2/2

Versione flangiata/ Flange version

04 A "VALVOPAT" RACCORDI A COMPRESSIONE PER TUBO PE "VALVOPAT" BRASS COMPRESSION COUPLER PE HOSE

FILETTO ISO 7/1 (UNI EN 10226)
ISO 7/1 (UNI EN 10226) THREAD



3030

Raccordo a "T"
Equal tee coupler

Codice Code	Ø Tubo Ø Pipe	Prezzo € Price €	Conf. Unit/Box
30300001	20 x 20 x 20		10/40
30300003	25 x 25 x 25		8/32
30300005	32 x 32 x 32		5/20
30300007	40 x 40 x 40		2/8
30300009	50 x 50 x 50		1/4
30300011	63 x 63 x 63		1/4



3035

Raccordo a gomito maschio
Male elbow coupler

Codice Code	Ø Tubo Ø Pipe	R ISO 7/1	Prezzo € Price €	Conf. Unit/Box
30350038	20	1/2"		25/100
30350039	25	3/4"		15/60
30350040	32	1"		10/40
30350041	40	1"1/4		5/20
30350042	50	1"1/2		3/12
30350043	63	2"		2/8
30350013	75	2"1/2		4/4
30350015	90	3"		1/1

Versione flangiata/ Flange version



3036

Raccordo a gomito con dado mobile
Elbow coupler with swivel nut

Codice Code	Ø Tubo Ø Pipe	G ISO 228/1	Prezzo € Price €	Conf. Unit/Box
30360002	25	3/4"		10/40



3037

Raccordo a gomito femmina
Female elbow coupler

Codice Code	Ø Tubo Ø Pipe	Rp ISO 7/1	Prezzo € Price €	Conf. Unit/Box
30370038	20	1/2"		20/80
30370039	25	3/4"		12/48
30370040	32	1"		8/32
30370041	40	1"1/4		4/16
30370042	50	1"1/2		2/8
30370043	63	2"		2/8
30370015	75	2"1/2		4/4
30370017	90	3"		3/3

Versione flangiata/ Flange version

04A "VALVOPAT" RACCORDI A COMPRESSIONE PER TUBO PE "VALVOPAT" BRASS COMPRESSION COUPLER PE HOSE

FILETTO ISO 7/1 (UNI EN 10226)
ISO 7/1 (UNI EN 10226) THREAD



3039

Raccordo a gomito
Connecting elbow coupler

Codice Code	Ø Tubo Ø Pipe	Prezzo € Price €	Conf. Unit/Box
30390026	20 x 20		15/60
30390027	25 x 25		10/40
30390028	32 x 32		5/20
30390029	40 x 40		3/12
30390030	50 x 50		2/8
30390031	63 x 63		1/4
30390013	75 x 75		3/3
30390015	90 x 90		1/1

Versione flangiata/ Flange version



3080

Raccordo femmina a muro
Wall female elbow coupler

Codice Code	Ø Tubo Ø Pipe	Rp ISO 7/1	Prezzo € Price €	Conf. Unit/Box
30800006	20	1/2"		15/60
30800007	25	1/2"		10/40
30800008	25	3/4"		10/40
30800009	32	3/4"		6/24
30800010	32	1"		6/24



6200A

Inserto per tubo PE acqua UNI 10910
Insert for water PE pipes UNI 10910

Codice Code	Ø Tubo Ø Pipe	Prezzo € Price €	Conf. Unit/Box
62000004	20 x 2		250/1000
62000006	25 x 2,3		150/600
62000009	32 x 3		80/320
62000011	40 x 3,7		40/160
62000013	50 x 4,6		20/80
62000015	63 x 5,8		10/40
62000016	75 x 6,9		7/28
62000017	90 x 8,2		5/20
62000001	110 x 10		3/12

VALVOFIT

SERIES 8000

**RACCORDI A COMPRESSIONE PER TUBO PE
FILETTO ISO 228/1
BRASS COMPRESSION COUPLER PE HOSE
ISO 228/1 THREAD**

**LIMITI DI TEMPERATURA: -20 °C +80 °C - LIMITI DI PRESSIONE: PN20
TEMPERATURE RATING: -20 °C +80 °C - PRESSURE RATING: PN20**

04 A "VALVOFIT" RACCORDI A COMPRESSIONE PER TUBO PE "VALVOFIT" BRASS COMPRESSION COUPLER PE HOSE

FILETTO ISO 228/1
ISO 228/1 THREAD



8000

Raccordo diritto maschio
Straight male coupler

Codice Code	Ø Tubo Ø Pipe	G ISO 228/1	Prezzo € Price €	Conf. Unit/Box
8000002	20	1/2"		40/160
8000005	25	3/4"		20/80
8000008	32	1"		12/48
8000011	40	1"1/4		8/32
8000014	50	1"1/2		6/24
8000017	63	2"		3/12



8005

Raccordo diritto femmina
Straight female coupler

Codice Code	Ø Tubo Ø Pipe	G ISO 228/1	Prezzo € Price €	Conf. Unit/Box
8005002	20	1/2"		40/160
8005006	25	3/4"		20/80
8005009	32	1"		12/48
8005011	40	1"1/4		8/32
8005013	50	1"1/2		6/24
8005015	63	2"		3/12



8007

Raccordo con dado mobile
Swivel nut coupler

Codice Code	Ø Tubo Ø Pipe	G ISO 228/1	Prezzo € Price €	Conf. Unit/Box
8007002	25	3/4"		15/60



8015

Raccordo di accoppiamento
Connecting coupler

Codice Code	Ø Tubo Ø Pipe	Prezzo € Price €	Conf. Unit/Box
8015001	20x20		20/80
8015004	25x25		15/60
8015008	32x32		8/32
8015011	40x40		4/16
8015013	50x50		3/12
8015015	63x63		2/8

04A "VALVOFIT" RACCORDI A COMPRESSIONE PER TUBO PE "VALVOFIT" BRASS COMPRESSION COUPLER PE HOSE

FILETTO ISO 228/1
ISO 228/1 THREAD



8025

Raccordo a "T" femmina
Female tee coupler

Codice Code	Ø Tubo Ø Pipe	G ISO 228/1	Prezzo € Price €	Conf. Unit/Box
80250001	20	1/2"		15/60
80250003	25	3/4"		8/32
80250005	32	1"		5/20
80250007	40	1"1/4		3/12
80250009	50	1"1/2		2/8
80250011	63	2"		1/4



8030

Raccordo a "T"
Equal tee coupler

Codice Code	Ø Tubo Ø Pipe	Prezzo € Price €	Conf. Unit/Box
80300001	20x20x20		12/48
80300003	25x25x25		8/32
80300005	32x32x32		5/20
80300007	40x40x40		2/8
80300009	50x50x50		1/4
80300011	63x63x63		1/4



8035

Raccordo a gomito maschio
Male elbow coupler

Codice Code	Ø Tubo Ø Pipe	G ISO 228/1	Prezzo € Price €	Conf. Unit/Box
80350001	20	1/2"		30/120
80350004	25	3/4"		15/60
80350007	32	1"		10/40
80350009	40	1"1/4		5/20
80350011	50	1"1/2		3/12
80350013	63	2"		2/8



8037

Raccordo a gomito femmina
Female elbow coupler

Codice Code	Ø Tubo Ø Pipe	G ISO 228/1	Prezzo € Price €	Conf. Unit/Box
80370001	20	1/2"		30/120
80370004	25	3/4"		15/60
80370006	32	1"		10/40
80370008	40	1"1/4		5/20
80370010	50	1"1/2		3/12
80370012	63	2"		2/8

04 A "VALVOFIT" RACCORDI A COMPRESSIONE PER TUBO PE "VALVOFIT" BRASS COMPRESSION COUPLER PE HOSE

FILETTO ISO 228/1
ISO 228/1 THREAD



8039

Raccordo a gomito
Elbow coupler

Codice Code	Ø Tubo Ø Pipe	Prezzo € Price €	Conf. Unit/Box
80390001	20 x 20		20/80
80390003	25 x 25		12/48
80390005	32 x 32		7/28
80390007	40 x 40		3/12
80390009	50 x 50		2/8
80390011	63 x 63		1/4



6200A

Inserto per tubo PE acqua UNI 10910
Insert for water PE pipes UNI 10910

Codice Code	Ø Tubo Ø Pipe	Prezzo € Price €	Conf. Unit/Box
62000004	20 x 2		250/1000
62000006	25 x 2,3		150/600
62000009	32 x 3		80/320
62000011	40 x 3,7		40/160
62000013	50 x 4,6		20/80
62000015	63 x 5,8		10/40



MILWAUKEE

SERIES 7100

RACCORDI A COMPRESSIONE PER TUBO PE
FILETTO ISO 228/1
BRASS COMPRESSION COUPLER PE HOSE
ISO 228/1 THREAD

LIMITI DI TEMPERATURA: -20 °C +80 °C - LIMITI DI PRESSIONE: PN20
TEMPERATURE RATING: -20 °C +80 °C - PRESSURE RATING: PN20

04A "MILWAUKEE" RACCORDI A COMPRESSIONE PER TUBO PE "MILWAUKEE" BRASS COMPRESSION COUPLER PE HOSE

FILETTO ISO 228/1
ISO 228/1 THREAD



7100

Raccordo diritto maschio
Straight male coupler

Codice Code	Ø Tubo Ø Pipe	G ISO 228/1	Prezzo € Price €	Conf. Unit/Box
71000001	20	1/2"		50/200
71000002	25	3/4"		30/120
71000003	32	1"		15/60
71000004	40	1"1/4		8/32



7105

Raccordo diritto femmina
Straight female coupler

Codice Code	Ø Tubo Ø Pipe	G ISO 228/1	Prezzo € Price €	Conf. Unit/Box
71050001	20	1/2"		50/200
71050002	25	3/4"		30/120
71050003	32	1"		12/48
71050004	40	1"1/4		8/32



7115

Raccordo di accoppiamento
Connecting coupler

Codice Code	Ø Tubo Ø Pipe	Prezzo € Price €	Conf. Unit/Box
71150001	20x20		30/120
71150002	25x25		20/80
71150003	32x32		12/48
71150004	40x40		6/24



7107

Raccordo con dado mobile
Swivel nut coupler

Codice Code	Ø Tubo Ø Pipe	G ISO 228/1	Prezzo € Price €	Conf. Unit/Box
71070002	25	3/4"		20/80



7125

Raccordo a "T" femmina
Female tee coupler

Codice Code	Ø Tubo Ø Pipe	G ISO 228/1	Prezzo € Price €	Conf. Unit/Box
71250001	20	1/2"		20/80
71250002	25	3/4"		10/40
71250003	32	1"		6/24
71250004	40	1"1/4		4/16

04A "MILWAUKEE" RACCORDI A COMPRESSIONE PER TUBO PE "MILWAUKEE" BRASS COMPRESSION COUPLER PE HOSE

FILETTO ISO 228/1
ISO 228/1 THREAD



7130

Raccordo a "T"
Tee coupler

Codice Code	Ø Tubo Ø Pipe	Prezzo € Price €	Conf. Unit/Box
71300001	20 x 20 x 20		15/60
71300002	25 x 25 x 25		10/40
71300003	32 x 32 x 32		6/24
71300004	40 x 40 x 40		3/12



7135

Raccordo a gomito maschio
Male elbow coupler

Codice Code	Ø Tubo Ø Pipe	G ISO 228/1	Prezzo € Price €	Conf. Unit/Box
71350001	20	1/2"		40/160
71350002	25	3/4"		20/80
71350003	32	1"		12/48
71350004	40	1"1/4		5/20



7137

Raccordo a gomito femmina
Female elbow coupler

Codice Code	Ø Tubo Ø Pipe	G ISO 228/1	Prezzo € Price €	Conf. Unit/Box
71370001	20	1/2"		30/120
71370002	25	3/4"		15/60
71370003	32	1"		12/48
71370004	40	1"1/4		6/24



7139

Raccordo a gomito
Connecting elbow coupler

Codice Code	Ø Tubo Ø Pipe	Prezzo € Price €	Conf. Unit/Box
71390001	20		25/100
71390002	25		15/60
71390003	32		8/32
71390004	40		4/16



7180

Raccordo femmina a muro con staffa
Wall female elbow coupler

Codice Code	Ø Tubo Ø Pipe	G ISO 228/1	Prezzo € Price €	Conf. Unit/Box
71800001	20	1/2"		20/80
71800003	25	3/4"		10/40

04 A "MILWAUKEE" RACCORDI A COMPRESSIONE PER TUBO PE "MILWAUKEE" BRASS COMPRESSION COUPLER PE HOSE

FILETTO ISO 228/1
ISO 228/1 THREAD



6200A

Inserto per tubo PE acqua UNI 10910

Insert for water PE pipes UNI 10910

Codice Code	Ø Tubo Ø Pipe	Prezzo € Price €	Conf. Unit/Box
62000004	20 x 2		250/1000
62000006	25 x 2,3		150/600
62000009	32 x 3		80/320
62000011	40 x 3,7		40/160



VALVOFFER

RACCORDI IN OTTONE PER TUBO FERRO
FILETTO ISO 228/1 A NORMA EN 1254-3
BRASS COUPLER FOR IRON PIPE
ISO 228/1 THREAD ACCORDING TO EN 1254-3

LIMITI DI TEMPERATURA: -20 °C +90 °C - LIMITI DI PRESSIONE: PN16
TEMPERATURE RATING: -20 °C +90 °C - PRESSURE RATING: PN16

04_B "VALVOFER" RACCORDI IN OTTONE PER TUBO FERRO

"VALVOFER" BRASS COUPLER FOR IRON PIPE

FILETTO ISO 228/1 A NORMA EN 1254-3
ISO 228/1 THREAD ACCORDING TO EN 1254-3



2000

Raccordo diritto maschio a compressione per tubo ferro
Straight coupler for iron pipe compression/male

Codice Code	Ø Tubo Ø Pipe	G ISO 228/1	Prezzo € Price €	Conf. Unit/Box
20000043	17	3/8"		20/80
20000044	21	1/2"		20/80
20000045	27	3/4"		15/60
20000046	34	1"		12/48
20000047	42	1"1/4		6/24
20000048	49	1"1/2		6/24
20000049	60	2"		3/12



2005

Raccordo diritto femmina a compressione per tubo ferro
Straight coupler for iron pipe compression/female

Codice Code	Ø Tubo Ø Pipe	G ISO 228/1	Prezzo € Price €	Conf. Unit/Box
20050006	17	3/8"		20/80
20050007	21	1/2"		20/80
20050008	27	3/4"		15/60
20050009	34	1"		12/48
20050010	42	1"1/4		6/24
20050011	49	1"1/2		6/24
20050012	60	2"		3/12



2015

Raccordo intermedio di accoppiamento a compressione per tubo ferro
Straight compression coupler for iron pipe

Codice Code	Ø Tubo Ø Pipe	G ISO 228/1	Prezzo € Price €	Conf. Unit/Box
20150008	17	3/8"		20/80
20150009	21	1/2"		15/60
20150010	27	3/4"		12/48
20150011	34	1"		6/24
20150012	42	1"1/4		3/12
20150013	49	1"1/2		3/12
20150014	60	2"		2/8



710

Raccordo diritto 3 pezzi sede o-ring
Three pieces straight coupler with o-ring

Codice Code	G ISO 228/1	Prezzo € Price €	Conf. Unit/Box
07100002	1/2"		10/80
07100003	3/4"		10/60
07100004	1"		5/30
07100005	1"1/4		8/32
07100006	1"1/2		6/24
07100007	2"		3/12

04_B "VALVOFER" RACCORDI IN OTTONE PER TUBO FERRO

"VALVOFER" BRASS COUPLER FOR IRON PIPE

FILETTO ISO 228/1 A NORMA EN 1254-3
ISO 228/1 THREAD ACCORDING TO EN 1254-3



715

Raccordo a gomito 3 pezzi sede o-ring
Three pieces elbow coupler with o-ring

Codice Code	G ISO 228/1	Prezzo € Price €	Conf. Unit/Box
07150002	1/2"		10/50
07150003	3/4"		5/30
07150004	1"		4/20
07150005	1"1/4		3/12
07150006	1"1/2		3/12
07150007	2"		1/4



720

Raccordo diritto 3 pezzi femmina/femmina
Three pieces coupler female/female

Codice Code	G ISO 228/1	Prezzo € Price €	Conf. Unit/Box
07200010	1/2"		10/80
07200011	3/4"		10/40
07200012	1"		10/30



152

Raccordo maschio/dado mobile (kit 2 raccordi)
Male/swivel nut coupler (kit of 2 fittings)

Codice Code	G ISO 228/1	Prezzo € Price €	Conf. Unit/Box
01520001	1/2" x 3/4"		2/50
01520002	3/4" x 1"		2/40
01520003	1" x 1"1/4		6/24
01520006	1"1/4 x 1"1/2		2/12
01520004	1"1/2 x 2"		1/8
01520005	2" x 2"1/2		2/20

SINOT.JS

RACCORDERIA GENERICA IN OTTONE GIALLO E CROMATO
FILETTO ISO 228/1
GENERAL YELLOW AND CHROME-PLATED BRASS FITTING
ISO 228/1 THREAD

FILETTO ISO 228/1
ISO 228/1 THREAD



139

Prolunga filettata maschio/femmina
Threaded extension male/female

Codice Code	G ISO 228/1	Prezzo € Price €	Conf. Unit/Box
01390001	3/8" x 10		10/500
01390003	3/8" x 15		10/450
01390005	3/8" x 20		10/300
01390007	3/8" x 30		10/250
01390009	3/8" x 40		10/200
01390011	3/8" x 50		10/200
01390013	1/2" x 10		10/350
01390015	1/2" x 15		10/300
01390017	1/2" x 20		10/250
01390019	1/2" x 25		10/200
01390021	1/2" x 30		10/150
01390023	1/2" x 40		5/120
01390025	1/2" x 50		5/100
01390065	1/2" x 60		30/120
01390039	1/2" x 80		5/80
01390040	1/2" x 100		5/70
01390027	3/4" x 10		10/200
01390029	3/4" x 15		10/200
01390031	3/4" x 20		10/180
01390047	3/4" x 25		5/150
01390066	3/4" x 30		5/100
01390067	3/4" x 40		5/100
01390037	3/4" x 50		5/80
01390068	3/4" x 60		5/40
01390069	3/4" x 80		5/50
01390070	3/4" x 100		5/40
01390041	1" x 10		10/150
01390042	1" x 15		10/130
01390043	1" x 20		10/120
01390044	1" x 30		5/80
01390071	1" x 40		5/70
01390048	1 x 50		5/60

FILETTO ISO 228/1
ISO 228/1 THREAD**139C**

Prolunga filettata cromata maschio/femmina

Chrome-plated threaded extension male/female

Codice Code	G ISO 228/1	Prezzo € Price €	Conf. Unit/Box
01390002	3/8" x 10		10/500
01390004	3/8" x 15		10/450
01390006	3/8" x 20		10/300
01390008	3/8" x 30		10/250
01390010	3/8" x 40		10/200
01390012	3/8" x 50		10/200
01390014	1/2" x 10		10/350
01390016	1/2" x 15		10/300
01390018	1/2" x 20		10/250
01390020	1/2" x 25		10/200
01390022	1/2" x 30		10/200
01390024	1/2" x 40		5/120
01390026	1/2" x 50		5/100
01390049	1/2" x 60		1/80
01390050	1/2" x 80		5/80
01390051	1/2" x 100		5/70
01390028	3/4" x 10		10/200
01390030	3/4" x 15		10/200
01390032	3/4" x 20		10/180
01390052	3/4" x 25		5/150
01390034	3/4" x 30		5/100
01390036	3/4" x 40		5/100
01390038	3/4" x 50		5/80
01390053	3/4" x 60		10/50
01390045	3/4" x 80		10/40
01390046	3/4" x 100		10/40
01390054	1" x 10		10/150
01390055	1" x 15		5/80
01390056	1" x 20		10/120
01390057	1" x 30		5/80
01390058	1" x 40		5/70
01390059	1" x 50		5/60

**140**

Raccordo a "T" femmina

Female tee fitting

Codice Code	G ISO 228/1	Prezzo € Price €	Conf. Unit/Box
01400003	1/2"		10/100
01400007	3/4"		5/50
01400013	1"		5/25
01400015	1"1/4		5/20
01400017	1"1/2		5/15
01400020	2"		2/10

04_B "ST. LOUIS" RACCORDERIA GENERICA IN OTTONE GIALLO E CROMATO "ST. LOUIS" GENERAL YELLOW AND CHROME-PLATED BRASS FITTING

FILETTO ISO 228/1
ISO 228/1 THREAD



140R

Raccordo ridotto a "T" femmina
Reduced tee fitting female

Codice Code	G1 x G2 x G3 ISO 228/1	Prezzo € Price €	Conf. Unit/Box
01400005	3/4" x 1/2" x 3/4"		5/50
01400009	1" x 1/2" x 1"		5/25
01400011	1" x 3/4" x 1"		5/25



140C

Raccordo cromato a "T" femmina
Chrome-plated tee fitting female

Codice Code	G ISO 228/1	Prezzo € Price €	Conf. Unit/Box
01400023	1/2"		10/100
01400025	3/4"		5/50



141

Raccordo a gomito femmina
Female elbow fitting

Codice Code	G ISO 228/1	Prezzo € Price €	Conf. Unit/Box
01410004	1/2"		10/100
01410006	3/4"		5/75
01410008	1"		5/50
01410010	1"1/4		5/25
01410012	1"1/2		5/20
01410014	2"		2/10



141R

Raccordo ridotto a gomito femmina
Female reduced elbow fitting

Codice Code	G1 x G2 ISO 228/1	Prezzo € Price €	Conf. Unit/Box
01410020	1/2" x 3/4"		5/100
01410021	1/2" x 1"		5/30
01410022	3/4" x 1"		5/50



141C

Raccordo a gomito cromato femmina
Chrome-plated female elbow fitting

Codice Code	G ISO 228/1	Prezzo € Price €	Conf. Unit/Box
01410017	1/2"		10/100
01410018	3/4"		5/75

FILETTO ISO 228/1
ISO 228/1 THREAD**142**Raccordo a gomito maschio/femmina
Male/female elbow fitting

Codice Code	G ISO 228/1	Prezzo € Price €	Conf. Unit/Box
01420003	1/2"		10/100
01420005	3/4"		5/50
01420007	1"		5/25
01420009	1"1/4		5/25
01420011	1"1/2		5/25
01420013	2"		3/12

**142R**Raccordo ridotto a gomito maschio/femmina
Male/female reduced elbow fitting

Codice Code	G1 x G2 ISO 228/1	Prezzo € Price €	Conf. Unit/Box
01420020	1/2" x 3/4"		5/50
01420021	1/2" x 1"		5/30
01420022	3/4" x 1"		5/30

**142C**Raccordo a gomito cromato maschio/femmina
Chrome-plated elbow male/female fitting

Codice Code	G ISO 228/1	Prezzo € Price €	Conf. Unit/Box
01420017	1/2"		10/100
01420018	3/4"		5/50

**144**Raccordo diritto maschio/maschio
Male/male straight fitting

Codice Code	G ISO 228/1	Prezzo € Price €	Conf. Unit/Box
01440007	1/2"		10/150
01440011	3/4"		10/100
01440017	1"		5/100
01440022	1"1/4		5/50
01440026	1"1/2		5/25
01440033	2"		2/20
01440035	2"1/2		2/10
01440046	3"		1/5

**144P**Raccordo diritto maschio/maschio pesante
Heavy male/male straight fitting

Codice Code	G ISO 228/1	Prezzo € Price €	Conf. Unit/Box
01440070	1/2"		10/200
01440071	3/4"		10/120
01440072	1"		5/60

04_B "ST. LOUIS" RACCORDERIA GENERICA IN OTTONE GIALLO E CROMATO "ST. LOUIS" GENERAL YELLOW AND CHROME-PLATED BRASS FITTING

FILETTO ISO 228/1
ISO 228/1 THREAD



144R

Raccordo diritto ridotto maschio/maschio
Reduced male/male straight fitting

Codice Code	G1 x G2 ISO 228/1	Prezzo € Price €	Conf. Unit/Box
01440005	3/8" x 1/2"		10/200
01440009	1/2" x 3/4"		10/100
01440013	1/2" x 1"		5/100
01440044	1/2" x 1"1/4		20/60
01440015	3/4" x 1"		5/100
01440019	3/4" x 1"1/4		50/50
01440020	1" x 1"1/4		5/50
01440037	1" x 1"1/2		50/50
01440030	1" x 2"		1/1
01440024	1"1/4 x 1"1/2		5/50
01440038	1"1/4 x 2"		20/20
01440031	1"1/2 x 2"		2/30
01440045	2" x 2"1/2		2/2



144C

Raccordo diritto cromato maschio/maschio
Chrome-plated male/male straight fitting

Codice Code	G ISO 228/1	Prezzo € Price €	Conf. Unit/Box
01440056	1/2"		10/300
01440057	3/4"		10/200



145

Raccordo diritto femmina/femmina
Staight female/female fitting

Codice Code	G ISO 228/1	Prezzo € Price €	Conf. Unit/Box
01450005	1/2"		10/100
01450009	3/4"		10/100
01450014	1"		5/50
01450018	1"1/4		5/50
01450020	1"1/2		2/40
01450022	2"		2/20

04_B "ST. LOUIS" RACCORDERIA GENERICA IN OTTONE GIALLO E CROMATO "ST. LOUIS" GENERAL YELLOW AND CHROME-PLATED BRASS FITTING

FILETTO ISO 228/1
ISO 228/1 THREAD



145R

Raccordo ridotto diritto femmina/femmina
Female/female reduced straight fitting

Codice Code	G1 x G2 ISO 228/1	Prezzo € Price €	Conf. Unit/Box
01450003	3/8" x 1/2"		10/100
01450029	3/8" x 3/4"		50/200
01450025	1/4" x 1/2"		15/60
01450033	1/4" x 3/4"		10/80
01450007	1/2" x 3/4"		10/100
01450011	1/2" x 1"		10/100
01450012	3/4" x 1"		10/100
01450030	3/4" x 1"1/4		50/50
01450024	1" x 1"1/4		5/50
01450026	1" x 1"1/2		15/60
01450031	1" x 2"		12/48
01450028	1"1/4 x 1"1/2		1/40
01450032	1"1/4 x 2"		12/48
01450027	1"1/2 x 2"		12/48



145C

Raccordo diritto cromato femmina/femmina
Chrome-plated female/female straight fitting

Codice Code	G1 x G2 ISO 228/1	Prezzo € Price €	Conf. Unit/Box
01450049	1/2" x 1/2"		10/100
01450052	3/4" x 3/4"		10/100



146

Raccordo diritto maschio/femmina
Male/female straight fitting

Codice Code	G1 x G2 ISO 228/1	Prezzo € Price €	Conf. Unit/Box
01460007	1/2" x 1/2"		10/100
01460015	3/4" x 3/4"		10/100



146R

Prolunga ridotta maschio/femmina
Reduced male/female extension

Codice Code	G1 x G2 ISO 228/1	Prezzo € Price €	Conf. Unit/Box
01460005	3/8" x 1/2"		20/200
01460013	1/2" x 3/4"		10/140
01460031	1/2" x 1"		5/75
01460019	3/4" x 1"		10/800

04 B "ST. LOUIS" RACCORDERIA GENERICA IN OTTONE GIALLO E CROMATO "ST. LOUIS" GENERAL YELLOW AND CHROME-PLATED BRASS FITTING

FILETTO ISO 228/1
ISO 228/1 THREAD



146C

Raccordo diritto cromato femmina/femmina
Chrome-plated female/female straight fitting

Codice Code	G ISO 228/1	Prezzo € Price €	Conf. Unit/Box
01460045	1/2"		10/180
01460046	3/4"		1/1



147

Riduzione maschio/femmina con esagono
Male/female hexagonal reducer

Codice Code	G1 x G2 ISO 228/1	Prezzo € Price €	Conf. Unit/Box
01470009	1/2" x 1/4"		25/200
01470011	1/2" x 3/8"		25/200
01470041	3/4" x 1/4"		10/200
01470013	3/4" x 3/8"		10/100
01470015	3/4" x 1/2"		10/100
01470017	1" x 3/8"		10/100
01470019	1" x 1/2"		10/100
01470021	1" x 3/4"		10/100
01470031	1"1/4 x 1/2"		5/50
01470023	1"1/4 x 3/4"		5/50
01470025	1"1/4 x 1"		5/50
01470046	1" 1/2 x 1/2"		5/50
01470027	1"1/2 x 3/4"		5/50
01470029	1"1/2 x 1"		5/50
01470040	1"1/2 x 1"1/4		5/50
01470032	2" x 1/2"		30/30
01470033	2" x 3/4"		30/30
01470034	2" x 1"		2/40
01470035	2" x 1"1/4		2/40
01470037	2" x 1"1/2		2/40
01470051	2"1/2 x 1"1/4		2/20
01470053	2"1/2 x 1"1/2		2/20
01470055	2"1/2 x 2"		2/30
01470057	3" x 2"		1/15
01470059	3" x 2"1/2		1/18

04_B "ST. LOUIS" RACCORDERIA GENERICA IN OTTONE GIALLO E CROMATO "ST. LOUIS" GENERAL YELLOW AND CHROME-PLATED BRASS FITTING

FILETTO ISO 228/1
ISO 228/1 THREAD



147C

Riduzione cromata maschio/femmina con esagono
Male/female chrome-plated hexagonal reducer

Code Code	G1 x G2 ISO 228/1	Prezzo € Price €	Conf. Unit/Box
01470061	1/4" x 1/8"		20/500
01470062	3/8" x 1/8"		25/1000
01470063	3/8" x 1/4"		25/1000
01470064	1/2" x 1/4"		25/500
01470065	1/2" x 3/8"		10/500
01470066	3/4" x 1/4"		10/240
01470067	3/4" x 3/8"		10/240
01470068	3/4" x 1/2"		10/250

FILETTO ISO 228/1
ISO 228/1 THREAD



716

Barilotto maschio/maschio
Male/male threaded extension

Codice Code	G ISO 228/1	Lunghezza Lenght	Prezzo € Price €	Conf. Unit/Box
07160001	1/2"	50		1/50
07160002	1/2"	60		1/45
07160048	1/2"	70		1/40
07160003	1/2"	80		1/35
07160004	1/2"	100		1/30
07160005	1/2"	120		10/50
07160006	1/2"	150		1/15
07160007	1/2"	200		1/15
07160008	1/2"	225		1/1
07160051	1/2"	250		1/40
07160009	1/2"	300		40/40
07160010	1/2"	400		1/1
07160011	1/2"	500		1/1
07160052	1/2"	800		1/1
07160012	1/2"	1000		1/1
07160013	3/4"	40		60/60
07160053	3/4"	50		1/30
07160014	3/4"	60		1/30
07160015	3/4"	80		1/20
07160016	3/4"	100		1/20
07160017	3/4"	120		10/40
07160018	3/4"	150		1/10
07160019	3/4"	180		10/30
07160020	3/4"	200		1/15
07160021	3/4"	250		1/25
07160022	3/4"	300		1/1
07160055	3/4"	400		1/1
07160056	3/4"	500		1/1
07160023	1"	40		40/40
07160024	1"	50		1/20
07160025	1"	60		1/20
07160049	1"	70		1/15
07160026	1"	80		1/15
07160027	1"	100		1/12
07160028	1"	120		14/14
07160029	1"	150		1/6
07160030	1"	180		30/120
07160031	1"	200		1/10
07160033	1"	250		1/15
07160034	1"	300		20/20
07160058	1"	400		2/8
07160059	1"	500		2/8

04_B "ST. LOUIS" RACCORDERIA GENERICA IN OTTONE GIALLO E CROMATO "ST. LOUIS" GENERAL YELLOW AND CHROME-PLATED BRASS FITTING

FILETTO ISO 228/1
ISO 228/1 THREAD



716

Barilotto maschio/maschio
Male/male threaded extension

Codice Code	G ISO 228/1	Lunghezza Length	Prezzo € Price €	Conf. Unit/Box
07160035	1"1/4	40		2/8
07160060	1"1/4	50		1/20
07160036	1"1/4	60		1/15
07160037	1"1/4	80		1/12
07160038	1"1/4	100		1/12
07160039	1"1/4	150		1/6
07160040	1"1/4	200		1/6
07160061	1"1/4	250		1/10
07160041	1"1/4	300		2/8
07160062	1"1/4	400		16/16
07160063	1"1/4	500		2/8
07160064	1"1/2	60		2/8
07160043	1"1/2	100		6/24
07160065	1"1/2	120		2/8
07160066	1"1/2	150		4/16
07160044	1"1/2	200		1/1
07160068	1"1/2	300		2/8
07160070	2"	80		2/8
07160045	2"	100		4/16
07160046	2"	150		8/8
07160047	2"	200		2/8
07160072	2"	300		2/8



173

Tappo femmina
Female plug

Codice Code	G ISO 228/1	Prezzo € Price €	Conf. Unit/Box
01730002	1/2"		25/200
01730003	3/4"		10/100
01730004	1"		10/100
01730005	1"1/4		5/100
01730007	1"1/2		5/60
01730006	2"		2/50



173C

Tappo femmina cromato
Chrome-plated female plug

Codice Code	G ISO 228/1	Prezzo € Price €	Conf. Unit/Box
01730016	1/2"		25/200
01730017	3/4"		10/100

04_B "ST. LOUIS" RACCORDERIA GENERICA IN OTTONE GIALLO E CROMATO "ST. LOUIS" GENERAL YELLOW AND CHROME-PLATED BRASS FITTING

FILETTO ISO 228/1
ISO 228/1 THREAD



174

Tappo maschio
Male plug

Codice Code	G ISO 228/1	Prezzo € Price €	Conf. Unit/Box
01740002	1/2"		25/300
01740003	3/4"		10/150
01740004	1"		10/100
01740005	1"1/4		5/100
01740006	1"1/2		5/50
01740007	2"		2/40



174C

Tappo maschio cromato
Chrome-plated male plug

Codice Code	G ISO 228/1	Prezzo € Price €	Conf. Unit/Box
01740015	3/8"		25/100
01740016	1/2"		25/200
01740017	3/4"		10/100



277

Raccordo portagomma maschio
Male hose coupling

Codice Code	G ISO 228/1	Ø	Prezzo € Price €	Conf. Unit/Box
02770003	1/8"	10		200/400
02770006	1/4"	10		150/300
02770008	3/8"	10		150/150
02770011	3/8"	15		150/600
02770013	1/2"	10		400/400
02770016	1/2"	15		100/400
02770017	1/2"	16		100/200
02770018	1/2"	18		60/60
02770019	1/2"	20		200/200
02770023	3/4"	20		150/150
02770024	3/4"	22		40/80
02770025	3/4"	25		40/80
02770026	1"	20		25/50
02770027	1"	25		100/100
02770053	1"	27		25/50
02770028	1"	30		70/70
02770029	1"	32		20/40
02770030	1"1/4	30		15/30
02770031	1"1/4	32		15/30
02770032	1"1/4	35		45/45
02770034	1"1/4	40		15/30
02770035	1"1/2	38		15/30
02770036	1"1/2	40		25/25
02770054	1"1/2	45		10/20
02770037	1"1/2	50		8/16
02770038	2"	50		6/12
02770040	2"	60		12/12

FILETTO ISO 228/1
 ISO 228/1 THREAD



280

Raccordo diritto per pompa
 Straight coupling for pump

Codice Code	G ISO 228/1	Ø	Prezzo € Price €	Conf. Unit/Box
02800002	1/2"	15		5/40
02800003	3/4"	20		5/30
02800005	1"	25		5/30
02800006	1"	30		5/20
02800007	1"1/4	30		3/15
02800008	1"1/4	35		3/15
02800009	1"1/2	40		2/12
02800010	1"1/2	45		4/8
02800011	2"	50		1/5



281

Raccordo curvo per pompa
 Elbow coupling for pump

Codice Code	G ISO 228/1	Ø	Prezzo € Price €	Conf. Unit/Box
02810002	1/2"	15		5/40
02810003	3/4"	20		5/20
02810004	1"	25		2/20
02810005	1"	30		1/15
02810006	1"1/4	30		1/10
02810007	1"1/4	35		1/10
02810008	1"1/2	40		1/6
02810009	1"1/2	45		3/6
02810010	2"	50		1/4



282

Raccordo 3 pezzi
 Three pieces coupling

Codice Code	Ø	Lunghezza Length	Prezzo € Price €	Conf. Unit/Box
02820002	15	64		5/40
02820003	18	66,5		20/80
02820004	20	90		5/30
02820005	25	91,5		5/30
02820006	30	95		10/40
02820007	35	105		2/10
02820008	40	120		1/8
02820009	45	124		3/12
02820010	50	125,5		1/5

04 B "ST. LOUIS" RACCORDERIA GENERICA IN OTTONE GIALLO E CROMATO "ST. LOUIS" GENERAL YELLOW AND CHROME-PLATED BRASS FITTING

FILETTO ISO 228/1
ISO 228/1 THREAD



290

Raccordo diritto per cassoni
Straight coupling for tanks

Codice Code	G ISO 228/1	Lunghezza Length	Prezzo € Price €	Conf. Unit/Box
02900002	1/2"	63,5		5/40
02900003	3/4"	64		5/25
02900004	1"	66,5		5/15
02900005	1"1/4	90		2/10
02900006	1"1/2	91,5		1/8
02900007	2"	95		1/5



296

Raccordo con tappo e vite per cassoni
Straight coupling for tanks with plug and nut

Codice Code	G ISO 228/1	Lunghezza Length	Prezzo € Price €	Conf. Unit/Box
02960001	1/2"	50		5/50
02960002	3/4"	56,5		5/30
02960003	1"	56,5		5/25



298

Raccordo con codolo per cassoni
Fitting with coupling for tanks

Codice Code	G1 x G2 ISO 228/1	Prezzo € Price €	Conf. Unit/Box
02980001	1/2" x 3/8"		5/50
02980002	3/4" x 1/2"		5/30
02980003	1" x 3/4"		5/25

SERIES 4300W

RACCORDI A PRESSARE PER TUBO MULTISTRATO - ACQUA
PRESS-FITTINGS FOR MULTILAYER PIPE - WATER

LIMITI DI TEMPERATURA: -20 °C +95 °C - LIMITI DI PRESSIONE: PN10
TEMPERATURE RATING: -20 °C +95 °C - PRESSURE RATING: PN10

NORTH CAROLINA



4300W

Raccordo diritto maschio
Straight fitting male

Codice Code	Ø Tubo Ø Pipe	R ISO 7	Prezzo € Price €	Conf. Unit/Box
4300W001	16	1/2"		10/100
4300W011	16	3/4"		10/100
4300W004	20	1/2"		10/100
4300W005	20	3/4"		10/100
4300W006	26	3/4"		10/50
4300W007	26	1"		5/25
4300W008	32	1"		5/25



4315W

Raccordo diritto femmina
Straight fitting female

Codice Code	Ø Tubo Ø Pipe	G ISO 228/1	Prezzo € Price €	Conf. Unit/Box
4315W001	16	1/2"		10/100
4315W011	16	3/4"		10/100
4315W004	20	1/2"		10/100
4315W005	20	3/4"		10/100
4315W006	26	3/4"		5/25
4315W007	26	1"		5/25
4315W008	32	1"		5/25



4305W 4310W

Raccordo diritto doppio
Straight fitting double

Codice Code	Ø Tubo Ø Pipe	Prezzo € Price €	Conf. Unit/Box
4305W001	16 x 16		10/100
4305W003	20 x 20		10/100
4305W004	26 x 26		5/50
4305W005	32 x 32		5/25
<i>Ridotto/ Reduced</i>			
4310W002	20 x 16		10/100
4310W004	26 x 16		10/100
4310W006	26 x 20		5/100
4310W009	32 x 26		5/25



4325W

Raccordo curvo maschio
Elbow male

Codice Code	Ø Tubo Ø Pipe	R ISO 7	Prezzo € Price €	Conf. Unit/Box
4325W001	16	1/2"		10/100
4325W003	20	1/2"		10/100
4325W004	20	3/4"		10/50
4325W005	26	3/4"		5/50
4325W006	32	1"		5/25



4330W

Raccordo curvo femmina
Elbow female

Codice Code	Ø Tubo Ø Pipe	G ISO 228/1	Prezzo € Price €	Conf. Unit/Box
4330W001	16	1/2"		10/100
4330W003	20	1/2"		10/100
4330W004	20	3/4"		10/50
4330W005	26	3/4"		5/25
4330W006	32	1"		5/25



4320W

Raccordo curvo doppio
Elbow double

Codice Code	Ø Tubo Ø Pipe	Prezzo € Price €	Conf. Unit/Box
4320W001	16 x 16		10/100
4320W003	20 x 20		10/100
4320W004	26 x 26		5/25
4320W005	32 x 32		5/25



4335W

Raccordo curvo femmina con flangia a 2 fori
Wallplate elbow female with 2 holes

Codice Code	Ø Tubo Ø Pipe	G ISO 228/1	Prezzo € Price €	Conf. Unit/Box
4335W001	16	1/2"		10/50
4335W003	20	1/2"		5/50



4375W

Raccordo a T femmina
Tee female

Codice Code	Ø Tubo Ø Pipe	G ISO 228/1	Prezzo € Price €	Conf. Unit/Box
4375W001	16	1/2"		10/100
4375W003	20	1/2"		5/50
4375W004	20	3/4"		5/50
4375W005	26	3/4"		5/25
4375W006	32	1"		5/25



4355W 4345W

Raccordo a T
Tee

Codice Code	Ø Tubo Ø Pipe	Prezzo € Price €	Conf. Unit/Box
4355W001	16 x 16 x 16		10/50
4355W003	20 x 20 x 20		5/50
4355W004	26 x 26 x 26		5/25
4355W005	32 x 32 x 32		5/25
<i>Ridotto/ Reduced</i>			
4345W001	16 x 20 x 16		5/50
4345W006	20 x 16 x 16		5/50
4345W008	20 x 16 x 20		5/50
4345W010	20 x 20 x 16		5/50
4345W025	26 x 16 x 26		5/25
4345W028	26 x 20 x 20		5/25
4345W029	26 x 20 x 26		5/25
4345W031	26 x 26 x 20		5/25
4345W037	32 x 20 x 32		5/25
4345W042	32 x 26 x 32		5/25

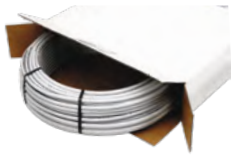


4405W

Raccordo diritto con girello su attacchi 1/2" x 16
Straight fitting with loose nut for 1/2" x 16 connections

Codice Code	Ø Tubo Ø Pipe	G ISO 228/1	Prezzo € Price €	Conf. Unit/Box
4405W001	16	1/2" (Ø16)		10/100





5009

Tubo in polietilene reticolato con anima in alluminio - Colore bianco in rotoli
White rolls cross-linked polyethylene pipe with aluminium insert. In coils

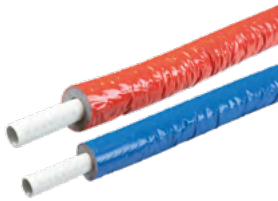
Codice Code	Ø Tubo Ø Pipe	Prezzo € Price €	Conf. Unit/Box
50090001	16 x 2,0		100 m/3200 m
50090002	20 x 2,0		100 m/1800 m
50090004	26 x 3,0		50 m/900 m
50090005	32 x 3,0		25 m/450 m



5014

Tubo in polietilene reticolato con anima in alluminio - Colore bianco in barre
White bar cross-linked polyethylene pipe with aluminium insert. In lengths

Codice Code	Ø Tubo Ø Pipe	Prezzo € Price €	Conf. Unit/Box
50140001	16 x 2,0		4 m x 60 pz = 240 m
50140002	20 x 2,0		4 m x 40 pz = 160 m
50140003	26 x 3,0		4 m x 20 pz = 80 m
50140004	32 x 3,0		4 m x 15 pz = 60 m



5013

Tubo multistrato 5009 rivestito isolato per riscaldamento
Multilayer insulated pipe 5009 with sheath for heating systems

Codice Code	Ø Tubo Ø Pipe	Colore guaina Sheath color	Spessore Thickness	Prezzo € Price €	Conf. Unit/Box
50130001	16 x 2,0	rosso/ red	6 mm		50 m/850 m
50130002	20 x 2,0	rosso/ red	6 mm		50 m/700 m
50130003	26 x 3,0	rosso/ red	6 mm		50 m/500 m
50130004	16 x 2,0	blu/ blue	6 mm		50 m/850 m
50130005	20 x 2,0	blu/ blue	6 mm		50 m/700 m
50130006	26 x 3,0	blu/ blue	6 mm		50 m/500 m

SERIES 4300G

RACCORDI A PRESSARE PER TUBO MULTISTRATO - GAS
PRESS-FITTINGS FOR MULTILAYER PIPE - GAS

LIMITI DI TEMPERATURA: -20 °C +70 °C - LIMITI DI PRESSIONE: MOP5
TEMPERATURE RATING: -20 °C +70 °C - PRESSURE RATING: MOP5

SOUTH CAROLINA



4300G

Raccordo diritto maschio
Straight fitting male

Codice Code	Ø Tubo Ø Pipe	R ISO 7	Prezzo € Price €	Conf. Unit/Box
4300G001	16	1/2"		10/100
4300G011	16	3/4"		10/100
4300G004	20	1/2"		10/100
4300G005	20	3/4"		10/100
4300G006	26	3/4"		10/50
4300G007	26	1"		5/25
4300G008	32	1"		5/25



4315G

Raccordo diritto femmina
Straight fitting female

Codice Code	Ø Tubo Ø Pipe	G ISO 228/1	Prezzo € Price €	Conf. Unit/Box
4315G001	16	1/2"		10/100
4315G011	16	3/4"		10/100
4315G004	20	1/2"		10/100
4315G005	20	3/4"		10/100
4315G006	26	3/4"		5/25
4315G007	26	1"		5/25
4315G008	32	1"		5/25



4305G 4310G

Raccordo diritto doppio
Straight fitting double

Codice Code	Ø Tubo Ø Pipe	Prezzo € Price €	Conf. Unit/Box
4305G001	16 x 16		10/100
4305G003	20 x 20		10/100
4305G004	26 x 26		5/50
4305G005	32 x 32		5/25
<i>Ridotto/ Reduced</i>			
4310G002	20 x 16		10/100
4310G004	26 x 16		10/100
4310G006	26 x 20		5/100
4310G009	32 x 26		5/25



4325G

Raccordo curvo maschio
Elbow male

Codice Code	Ø Tubo Ø Pipe	R ISO 7	Prezzo € Price €	Conf. Unit/Box
4325G001	16	1/2"		10/100
4325G003	20	1/2"		10/100
4325G004	20	3/4"		10/50
4325G005	26	3/4"		5/50
4325G006	32	1"		5/25



4330G

Raccordo curvo femmina
Elbow female

Codice Code	Ø Tubo Ø Pipe	G ISO 228/1	Prezzo € Price €	Conf. Unit/Box
4330G001	16	1/2"		10/100
4330G003	20	1/2"		10/100
4330G004	20	3/4"		10/50
4330G005	26	3/4"		5/25
4330G006	32	1"		5/25



4320G

Raccordo curvo doppio
Elbow double

Codice Code	Ø Tubo Ø Pipe	Prezzo € Price €	Conf. Unit/Box
4320G001	16 x 16		10/100
4320G003	20 x 20		10/100
4320G004	26 x 26		5/25
4320G005	32 x 32		5/25



4335G

Raccordo curvo femmina con flangia a 2 fori
Wallplate elbow female with 2 holes

Codice Code	Ø Tubo Ø Pipe	G ISO 228/1	Prezzo € Price €	Conf. Unit/Box
4335G001	16	1/2"		10/50
4335G003	20	1/2"		5/50



4375G

Raccordo a T femmina
Tee female

Codice Code	Ø Tubo Ø Pipe	G ISO 228/1	Prezzo € Price €	Conf. Unit/Box
4375G001	16	1/2"		10/100
4375G003	20	1/2"		5/50
4375G004	20	3/4"		5/50
4375G005	26	3/4"		5/25
4375G006	32	1"		5/25



4355G 4345G

Raccordo a T
Tee

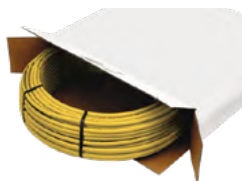
Codice Code	Ø Tubo Ø Pipe	Prezzo € Price €	Conf. Unit/Box
4355G001	16 x 16 x 16		10/50
4355G003	20 x 20 x 20		5/50
4355G004	26 x 26 x 26		5/25
4355G005	32 x 32 x 32		5/25
<i>Ridotto/ Reduced</i>			
4345G001	16 x 20 x 16		5/50
4345G006	20 x 16 x 16		5/50
4345G008	20 x 16 x 20		5/50
4345G010	20 x 20 x 16		5/50
4345G025	26 x 16 x 26		5/25
4345G028	26 x 20 x 20		5/25
4345G029	26 x 20 x 26		5/25
4345G031	26 x 26 x 20		5/25
4345G037	32 x 20 x 32		5/25
4345G042	32 x 26 x 32		5/25



4405G

Raccordo diritto con girello su attacchi 1/2" x 16
Straight fitting with loose nut for 1/2" connections

Codice Code	Ø Tubo Ø Pipe	G ISO 228/1	Prezzo € Price €	Conf. Unit/Box
4405G001	16	1/2" (Ø16)		10/100



5008

Tubo in polietilene reticolato con anima in alluminio - Colore giallo in rotoli
Yellow rolls cross-linked polyethylene pipe with aluminium insert. In coils

Codice Code	Ø Tubo Ø Pipe	Prezzo € Price €	Conf. Unit/Box
50080001	16 x 2,0		100 m/2800 m
50080002	20 x 2,0		100 m/1800 m
50080004	26 x 3,0		50 m/900 m
50080005	32 x 3,0		25 m/450 m



5400

Cesoia taglia tubo
Pipe cutter

Codice Code	Ø Tubo Ø Pipe	Prezzo € Price €	Conf. Unit/Box
54000001	0 - 35		1/5



5401

Cesoia taglia tubo
Pipe cutter

Codice Code	Ø Tubo Ø Pipe	Prezzo € Price €	Conf. Unit/Box
54010001	0 - 42		1/10



4412

Valigetta con set calibratori/sbavatori
Plastic case with deburring tools set

i Comprensiva di impugnatura intercambiabile e utensili
Complete of interchangeable "T" handle and deburring tools

Codice Code	Ø Tubo Ø Pipe	Prezzo € Price €	Conf. Unit/Box
44120001	16 - 20 - 26		1/1



4135

Impugnatura a "T" intercambiabile
Interchangeable tee handle

i Da utilizzare con 4411 per operazioni manuali
To be used with 4411 for manual operations

Codice Code	Ø Tubo Ø Pipe	Prezzo € Price €	Conf. Unit/Box
41350001	-		1/1



4411

Utensili calibratori/sbavatori intercambiabili
Interchangeable deburring tools

Codice Code	Ø Tubo Ø Pipe	Prezzo € Price €	Conf. Unit/Box
44110002	16 x 2,0		1/100
44110005	20 x 2,0		1/100
44110006	26 x 3,0		1/100
44110007	32 x 3,0		1/100



4500

Pressatrice a batteria versione MINI per tubo da Ø 16 a Ø 32 compreso
MINI battery crimping machine pipe size from Ø 16 up to Ø 32

i La pressatrice viene fornita in valigetta completa di: batteria ricaricabile Li-Ion 12Vdc - 2,0 Ah; carica batterie; set di pinze (se previsto) Ø 16, Ø 20, Ø 26/ The plastic box supplied with the crimp machine includes: rechargeable battery Li-Ion 12Vdc - 2,0 Ah, battery recharger, set of jaws Ø 16, Ø 20, Ø 26 (if expected)

Codice Code	Ø Tubo Ø Pipe	Prezzo € Price €	Conf. Unit/Box
45000002	-		1/1
45000001	16 - 20 - 26		1/1



4510

Pinze profilo TH - per pressatrice MINI
Pressing jaws - TH profile - for MINI crimping machine

Codice Code	Ø Tubo Ø Pipe	Prezzo € Price €	Conf. Unit/Box
45100002	16		1/1
45100004	20		1/1
45100006	26		1/1
45100007	32		1/1

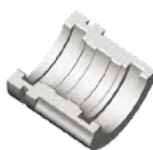


5300

Pressatrice manuale
Manual crimping machine

i Inserti non presenti in cassetta
Inserts not supplied with the machine

Codice Code	Ø Tubo Ø Pipe	Prezzo € Price €	Conf. Unit/Box
53000001	-		1/1



5500

Inserto per pressatrice manuale - profilo TH
Insert for manual crimping machine - TH profile

Codice Code	Ø Tubo Ø Pipe	Prezzo € Price €	Conf. Unit/Box
55000001	16		1/1
55000002	20		1/1
55000003	26		1/1