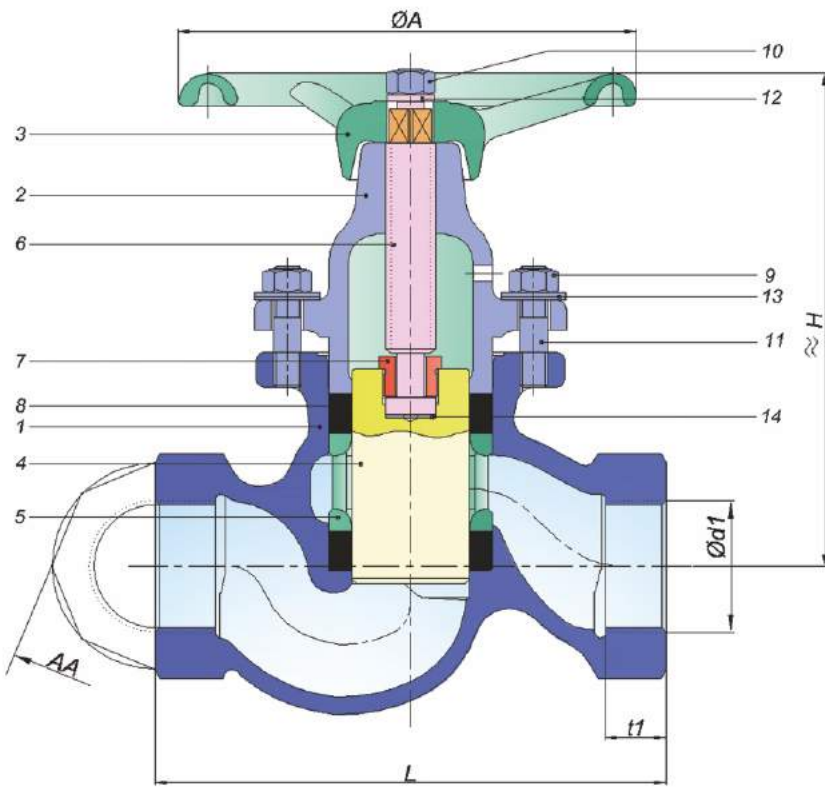


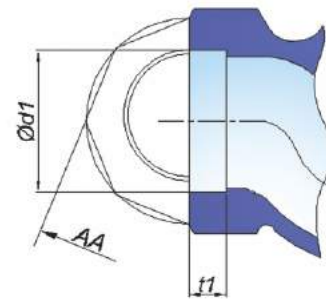
Piston Valves

DN 1/2"-2"

Type: YVMN Screwed YVSN Socket Weld



Screwed Type-YVMN



Socket type – YVSN
(For steel and stainless steel)

Material Type	Cast Iron	Cast Steel	Stainless Steel
Size	DN1/4"-2"	DN1/4"-2"	DN1/4"-2"
Pressure Class	PN16	PN40 DN 1/4"-2" PN63 DN 1/4"-1"	PN40 DN 1/4"-2" PN63 DN 1/4"-1"
Dimensions	DIN EN 3202-4/M9 (Except DN 1/4")	DIN EN 3202-4/M9 (Except DN 1/4")	DIN EN 3202-4/M9 (Except DN 1/4")
Assembly (Screwed)	Screwed according to DIN EN ISO 228-1	Screwed according to DIN EN ISO 228-1	Screwed according to DIN EN ISO 228-1
Assembly (Socket)	—	Socketed according to DIN EN 12760*****	Socketed according to DIN EN 12760*****
Temperature	-10°C +300 °C	-10°C * +400 °C	-10°C * +400 °C
Material Code	2	7	9
Order Code (Screwed)	YPG.2M.__.00	YPG.7M.__.00	YPG.9M.__.00
Order Code (Socket)	—	YPG.7S.__.00	YPG.9S.__.00

Fluid Types

All kinds of fluids such as water, hot water, high temperature hot water, steam, thermal oil, LPG, fuel oil, pressurized air, etc.

P.No	Part Name	Cast Iron	Cast Steel	St. Steel	St. Steel
1	Body	GJL 250	1.0619	1.4308	1.4408
2	Upper Bonnet	GJL 250 ****	1.0619 ****	1.4308	1.4408
3	Hand Wheel	GJL 200	GJL 200	GJL 200	GJL 200
4	Piston	1.4021	1.4021	1.4301	1.4401
5	Lantern Bush	GJL 200 + Phosphate	GJL 200 + Phosphate	1.4308***	1.4408***
6	Valve Spindle	1.4021/St-42	1.4021/St-42	1.4301	1.4401
7	Double Piece Nut	Ms-58	Ms-58	1.4301	1.4401
8	Valve Ring	Graphite	Graphite	Graphite	Graphite
9	Nut	8.8+Gal.	8.8+Gal.	A2-70	A2-70
10	Nut	8.8+Gal.	8.8+Gal.	A2-70	A2-70
11	Stud	8.8+Gal.	8.8+Gal.	A2-70	A2-70
12	Lock Washer	8.8+Gal.	8.8+Gal.	A2-70	A2-70
13	Belleville Washer	50CrV4	50CrV4	A2-70	A2-70
14	Piston Washer	Ms-58	Ms-58	1.4301	1.4301

DN		Dimensions			Assembly				
mm	inch	L	H	A	d1		t1		AA
					Screwed	Socket	Screwed	Socket	
6	1/4"	85	105	100	R 1/4"	14.2	10.5	10	32
					YVMN 1/4" YVSN 1/4"				
10	3/8"	85	105	100	R 3/8"	17.6	12.5	10	32
					YVMN 3/8" YVSN 3/8"				
15	1/2"	100	105	100	R 1/2"	22	15.5	10	36
					YVMN 1/2" YVSN 1/2"				
20	3/4"	120	120	120	R 3/4"	27.5	16	13	41
					YVMN 3/4" YVSN 3/4"				
25	1"	135	138	140	R 1"	34.5	19	13	50
					YVMN 1" YVSN 1"				
32	1 1/4"	160	154	160	R 1 1/4"	43	21	13	65
					YVMN 1 1/4" YVSN 1 1/4"				
40	1 1/2"	185	186	180	R 1 1/2"	49	21	13	75
					YVMN 1 1/2" YVSN 1 1/2"				
50	2"	220	211	200	R 2"	61.5	26	16	90
					YVMN 2" YVSN 2"				

* For temperatures below -10°C, stud and nut material should be stainless steel
 ***1.4401 for DN15 and DN20
 **** Ck22 for DN15 and DN20
 *****NPT Screwed type is available according to ANSI 2.1 1960 on demand