

4M Series Plate Type Valve



Ordering Code

4M

2

10

- 06

- AC220V

- W

Specification Code

4M:Two(Three)-position
Five-way Plate Type Valve

Body Size

2:1/8" and 1/4"
Valve body
3:1/4" and 3/8"
Valve body

Coil and Places

10:Single-head
Double-position
20:Double-head
Double-position

Port Size

06:G1/8"
08:G1/4"
10:G3/8"

Standard Voltage

DC12V
DC24V
AC24V 50Hz/60Hz
AC110V 50Hz/60Hz
AC220V 50Hz/60Hz
AC380V 50Hz/60Hz

Wiring Form

Blank: Standard
Connector
LD: Brown with
Lighting Connector
LD1: White with
Lighting Connector
W: Lead Wire Type

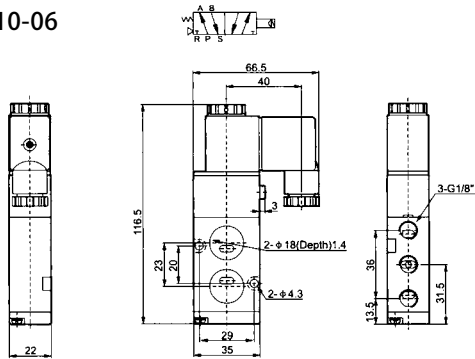
Specification

Model	4M210-06	4M220-06	4M210-08	4M220-08	4M310-08	4M320-08	4M310-10	4M320-10
Working Medium	40 Micron Filtered Air							
Motion Pattern	Inner Guide Type							
Position and Way NO.	Two-position Three-way							
Effective Section Area	14mm ² (CV=0.78)	16mm ² (CV=0.89)		25mm ² (CV=1.39)		30mm ² (CV=1.67)		
Port Size	Air Inlet=Exhaust=G1/8"		Air Inlet=G1/4" Exhaust=G1/8"		Air Inlet=Exhaust=G1/4"		Air Inlet=G3/8" Exhaust=G1/4"	
Lubricate	Not Necessary							
Working-Pressure	0.15 ~ 0.8MPa							
Max.Pressure Resistance	1.2MPa							
Operating Temperature	5 ~ 60							
Voltage Range	-15% ~ +10%							
Power Consumption	AC380V: 2.5VA, AC220V: 2.0VA, AC110V: 2.5VA, AC24V: 3.5VA, DC24V:3.0W, DC12V:2.5W							
Insulation & Protection Class	F Class. IP65							
Wiring Form	Connector Type							
Highest Action Frequency	5 Cycle / Sec							
Shortest Excitation Time	0.05 Second							

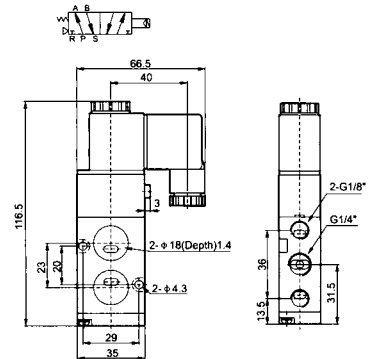
4M Series Plate Type Valve

Overall Dimension

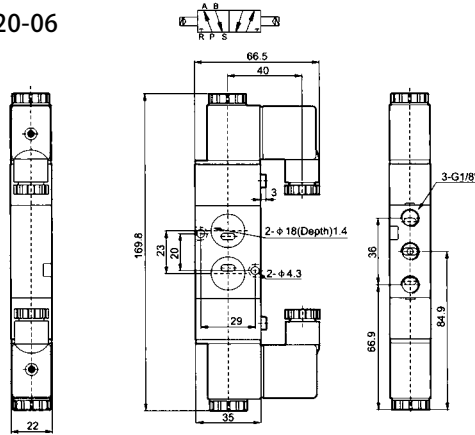
4M210-06



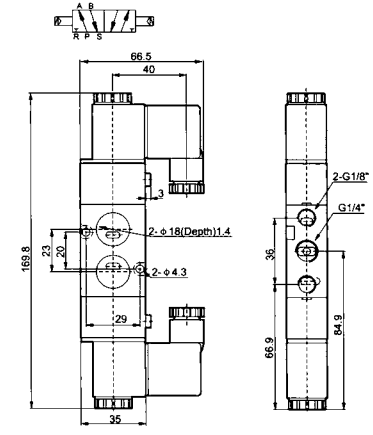
4M210-08



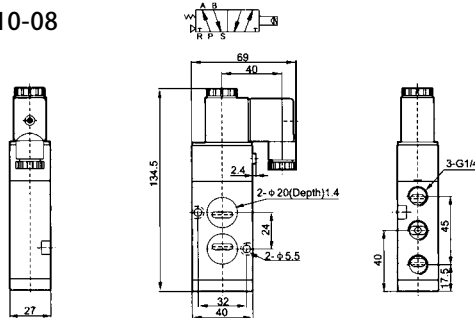
4M220-06



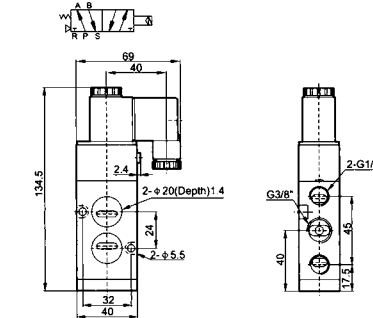
4M220-08



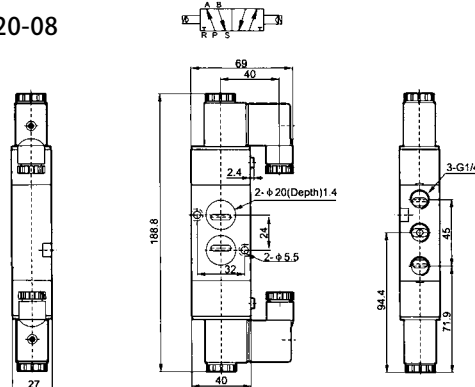
4M310-08



4M310-10



4M320-08



4M320-10

