

mod.

# GMDM-I

Multi jet-super dry pre-equipped for inductive modules



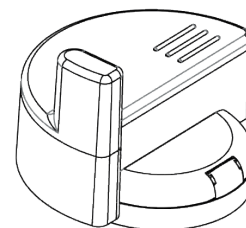
Su richiesta  
Upon request



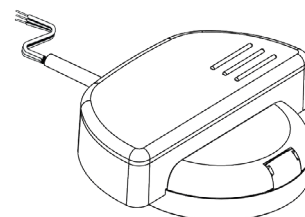
mod. **GMDM-I**

Multi-jet, dry dial, magnetic transmission with 360° rotating lid.  
For cold water (50°C)  
Inductive pre-equipment for the installation of data communication modules  
M-BUS wired and wireless OMS and non-magnetic pulse output and upon request LoRa & NB-IoT.

Compatible modules



mod. **IWM-TX3**



mod. **IWM-MB3**



mod. **IWM-PL3**

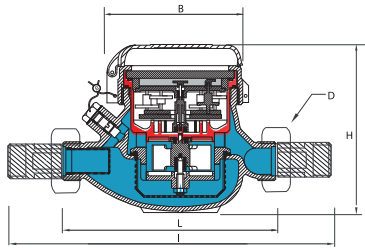


## Technical features

Size		DN	mm in	15 (1/2")	20 (3/4")	25 (1")	32 (1 1/4")	40 (1 1/2")	50 (2")
	Overload flow rate	Q <sub>4</sub>	m <sup>3</sup> /h	3,125	5	7,875	12,5	20	31,25
	Permanent flow rate	Q <sub>3</sub>	m <sup>3</sup> /h	2,5	4	6,3	10	16	25
R=100 H ↑	Transitional flow rate	Q <sub>2</sub>	l/h	40	64	100,8	160	256	400
	Min flow rate	Q <sub>1</sub>	l/h	25	40	63	100	160	250
R=160 H ↑*	Transitional flow rate	Q <sub>2</sub>	l/h	25	40	63	100	160	250
	Min flow rate	Q <sub>1</sub>	l/h	15,63	25	39,38	62,5	100	156,25
R=50 VH →	Transitional flow rate	Q <sub>2</sub>	l/h	80	128	201,6	320	512	800
	Min flow rate	Q <sub>1</sub>	l/h	50	80	126	200	320	500
	Sensitivity		l/h	6	6	10	10	20	20
	Min reading		l	0,05	0,05	0,05	0,05	0,05	0,05
	Max reading		m <sup>3</sup>	99,999	99,999	99,999	99,999	999,999	999,999
	Max admissible pressure MAP		bar	16	16	16	16	16	16

\*Version on request only cold water

### Dimensions and Weights



Calibro Size	mm in	15 (1/2")	20 (3/4")	25 (1")	32 (1 1/4")	40 (1 1/2")	50 (2")
L	mm	145-165-190	190	260	260	300	300
l	mm	225-245-270	290	360	380	440	460
H	mm	109	111	117	117	153	172
B	mm	100	100	104	104	126	160
D Threading	in	3/4"	1"	1 1/4"	1 1/2"	2"	2 1/2"
Weight	Kg	1,18	1,40	2,09	2,18	4,38	4,46
		1,41					9,40

Threading EN ISO 228-1:2003

The DN50 meters can be supplied flanged according to ISO 7005-2 / EN 1092-2 PN16

### Versione base - Basic version

- R100-H ↑ R50-VH →
- Cold water version 0°C-50°C
- Hot water 30°C-90°C
- Magnetic transmission
- Direct reading on 5 numeric rolls (6 numeric rolls on DN40 and DN50)
- Dry dial
- 360° rotating lid (DN15-DN32)

### Su richiesta - Upon request

- Cold water version R160-H ↑ R50-VH →
- Anti-magnetic fraud protection

### Installation position

