

European Style SWAROVSKI ELEMENTS December Birthstone Bracelet

Project B3023

Designer: Karlin Jones

Make this heirloom quality accessory using a sterling silver European Style bracelet and gorgeous Swarovski BeCharmed crystal beads in Light Sapphire. The beads sparkle brilliantly and look very impressive when combined together.

What You'll Need

Swarovski Crystal, 80301 BeCharmed Baguette Pave European Style Lg Hole Bead 10mm, 1 Pc, Crystal

SKU: SWBB-5160

Project uses 2 pieces



Swarovski Crystal, 77512 BeCharmed Rondelle 4.5mm Large Hole Beads 12mm, 2 Pcs, Crystal

SKU: SWBB-5080

Project uses 4 pieces



Swarovski Crystal, 77512 BeCharmed Rondelle 4.5mm Large Hole Beads 12mm, 2 Pcs, Light Sapphire F

SKU: SWBB-5076

Project uses 4 pieces



Swarovski Crystal, 81101 BeCharmed Pave Slim European Style Lg Hole Bead 13.5mm, 1 Piece, Light Sapphire

SKU: SWBB-5293

Project uses 2 pieces



Swarovski Crystal, 80301 BeCharmed Baguette Pave European Style Lg Hole Bead 10mm, 1 Pc, Lt Sapphire

SKU: SWBB-5174

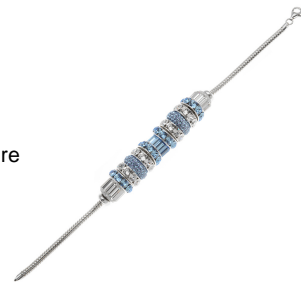
Project uses 1 piece



Sterling Silver Charm Bracelet For European Style Large Hole Beads 3mm / 7.5 Inch With Smart Bead Stoppers

SKU: AXC-9473

Project uses 1 piece



Instructions

No tools required!

1. Your bracelet has 2 smart beads already attached: one close to the lobster clasp and one close to the other side. Slide the smart bead near the non-lobster clasp side off of the bracelet. Set aside for now.
2. Slide onto your bracelet these Swarovski BeCharmed beads in the following order: 1 Crystal baguette bead, 1 Light Sapphire rondelle bead, 1 Crystal rondelle bead, 1 Light Sapphire slim pave bead, 1 Crystal rondelle bead, 1 Light Sapphire rondelle bead, 1 Light Sapphire baguette bead, 1 Light Sapphire rondelle, 1 Crystal rondelle bead, 1 Light Sapphire slim pave bead, 1 Crystal rondelle bead, 1 Light Sapphire rondelle bead, and 1 Crystal baguette bead.
3. Slide the smart bead that you removed in the first step back onto the bracelet.
4. Look at your beads and make sure they are centered on the bracelet, if they are not, just scoot them and the smart beads into the position that you want.
5. Your bracelet is done.