

Pink Sands Brick Stitch Bracelet

Project B2368

Kat Silvia

This delicate bead woven bracelet will give you plenty of practice with your brick stitch increases and decreases. A sweet color palette of sandy beige and pink make this the perfect accessory for a beach getaway.

What You'll Need

Miyuki Delica Seed Beads, 11/0 Size, 6.8 Grams, Opaque Pear AB DB1571

SKU: DB-1571

Project uses 1 Tube



Miyuki Delica 11/0 Seed Bead Matte White Db351 (6.6 Gram Tube)

SKU: DB-351

Project uses 1 Tube



Miyuki Delica Seed Beads, 11/0 Size, 7.2 Gram Tube, #624 Silver Lined Light Pink Alabaster Opal Dyed

SKU: DB-624

Project uses 1 Tube



Magnetic Clasp, 6x4.5mm, 4 Clasp Sets, Silver Plated

SKU: FCL-6808

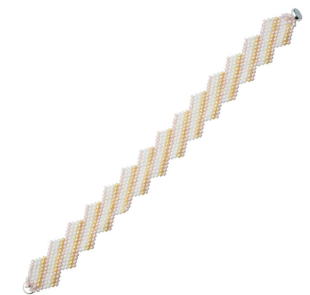
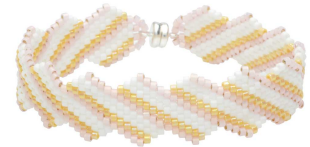
Project uses 1 piece



FireLine Braided Beading Thread, 4lb Test and 0.005 Thick, 15 Yards, Crystal Clear

SKU: XCR-1280

Project uses 1 Spool



Recommended Tools:

[XTL-3006] BeadSmith English Beading Needles Size 12 (4 Needles), [XTL-0117] BeadSmith

Ultra Thread Zap, Battery Operated Thread Trimmer, 1 Piece

Instructions

Please see our Printer Friendly PDF for Full Color Beading Pattern.

1. Begin by watching our video: How To Do Brick Stitch Bead Weaving. From what you learned in this cut off a length of thread that you're comfortable working with. This design features increases and decreases. Please watch our video: How to Make Increases and Decreases in Brick Stitch. Follow along with the pattern and repeat to create the desired length. Please note, the clasp will add about 1/2 inch.
2. For the clasp, you will be coming out of the first pink bead on one side. Pick up 3 pink beads and go down into the #3 bead in the last row (the bead in the center/white bead). Go down into the next row and then turn the thread around so it is coming up through the pink bead on the opposite side of the bracelet. Add three pink beads as you've just done. Weave down and come out of the first pink bead again, go up through the first two pink beads you added. Add one more and attach the loop on the clasp, then add one more pink bead, go back through the two pink beads on the other side. You can retrace this arc for security. Tie off and weave in your threads.
3. Repeat the above process to complete the clasp on the other side.

