

K3

Complete User manual

1、 Product introduction

K3 is a multi-function USB DAC for PC-HiFi. Being connected to a computer, it can work such as USB decoding, USB digital interface, audio decoding and amplification, etc.

Product features :

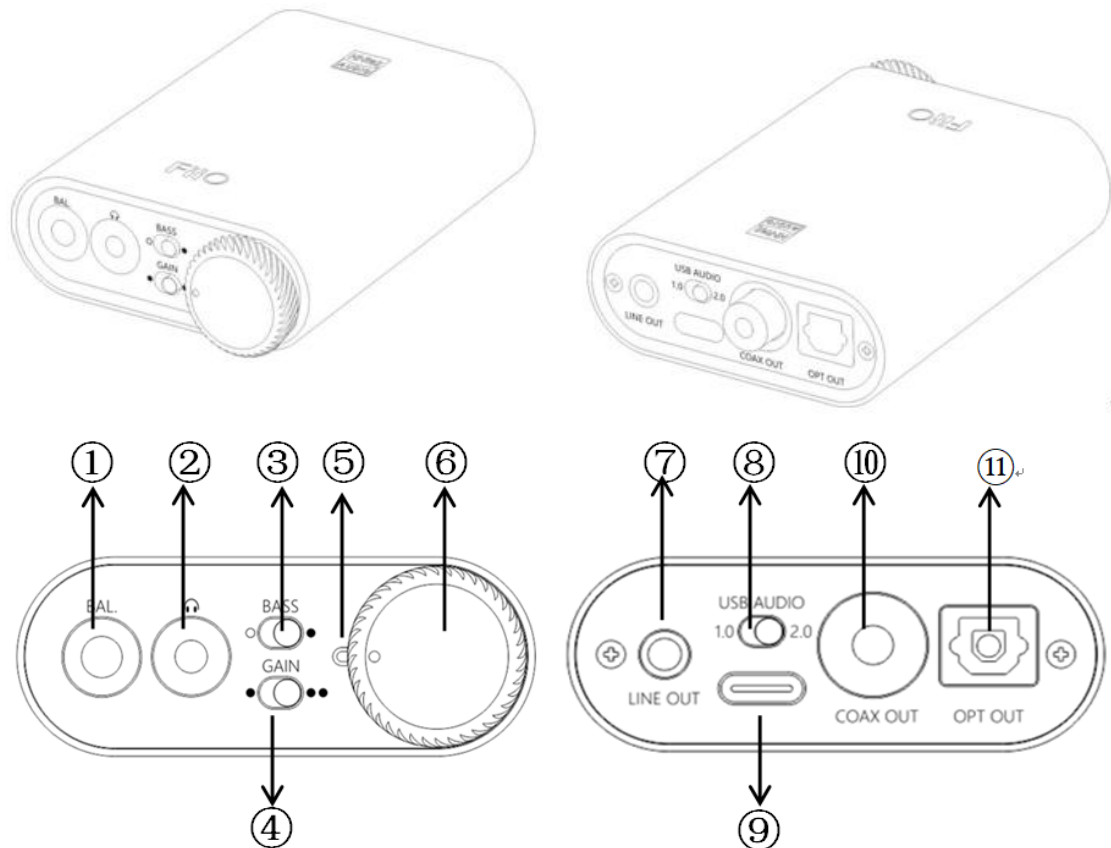
- Dual USB AUDIO mode
- Flagship decoding capability PCM384k/DSD256
- RGB work indicator
- Dual headphone outputs, dual digital audio outputs
- ADC type volume control

List of items included in package (please check to make sure that all items are included)

- 1) USB A-Type C cable 1pc
- 2) Spare foot pad 4pcs
- 3) Quick user guide 1pc
- 4) Warranty card 1pc

(Note: The products, accessories, user interface and other illustrations in the manual are schematic and are for reference only. Due to product updates and upgrades, the actual product and schematic diagram may be slightly different. Please refer to the actual product.)

2、 Ports and indicators explained:



① **2.5mm balanced headphone output interface:** Connect a 2.5mm earphone to this jack, balance the boost function will be started up automatically, which can improve the output power by about 50%.

② **3.5mm single-ended headphone output interface:** Connect a 3.5mm headset to this jack

③ **Bass boost switch:** When the switch is turned to the left, bass boost is OFF; and switch to the right, the bass boost is ON;

④ **Low/high gain switch:** When the switch is turned to the left, it means low gain, the switch to the right means high gain, and the high gain can be adjusted based on different types of headphones;

⑤ **RGB indicator:** This light is located next to the power/volume knob. While playing music, the indicator will display different colors according to the sampling rate.

⑥ **Power/Volume knob:** Turn the knob clockwise to stop and turn the power on, then continue to rotate to increase the volume. Turn counterclockwise to decrease the volume, continue to rotate and hear the beep and turn off the power. When the power is off, the white dot on the knob points to the RGB light;

⑦ **Linear output:** Directly driven by OPA1612, to ensure the high quality of sound reproduction, suitable for speakers, amps, decoders, etc.;

⑧ **USB mode selection switch:** When the switch is set to 1.0, it is USB Audio 1.0 drive-free mode, when the switch is dialed to 2.0, it represents USB Audio 2.0 drive mode;

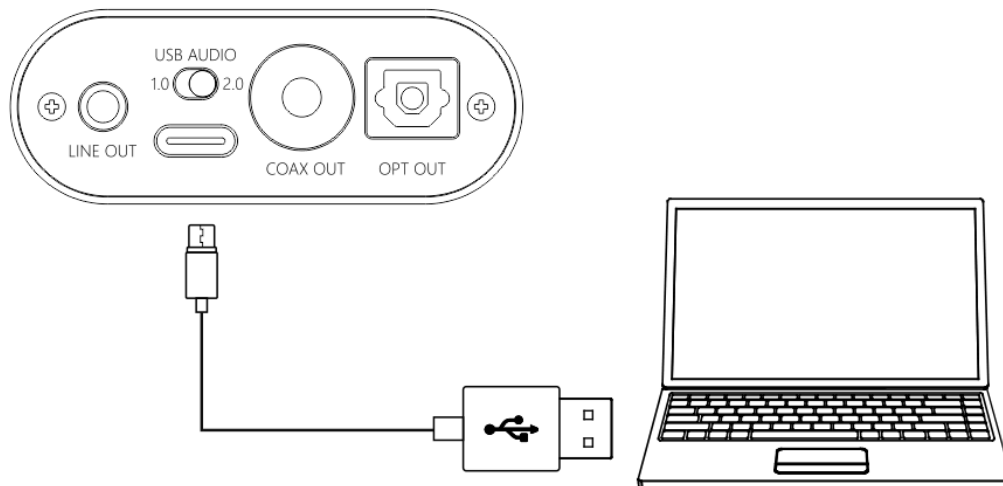
⑨ **Type C USB interface:** Connect the computer (Windows system or OS system) to get power to K3. The audio input must use this port;

⑩ **COAX OUT:** Coaxial output port, this digital output port is used to connect speakers, amplifiers or decoders with coaxial input;

⑪ **OPT OUT:** Optical output port for connecting speakers, amplifiers or decoders with optical input.

3, the usage steps

Step 1, select the appropriate USB mode and connect to the computer with the data cable



- **USB Audio 1.0, decoding sampling rate can reach 96k/24bit, no need to drive**

After connecting the data cable, turn the power/volume knob clockwise until you hear a click and the device turns on.

Select the K3 device on the computer side.

- **USB Audio 2.0, decoding sampling rate can reach 384k/DSD256, driver needs to be install in Windows.**

After connecting the data cable, turn the power/volume knob clockwise until you hear a click and turn the device on.

For the MAC computer, there is no need to install the driver, but need to select K3 as sound device in Mac.

For Windows system computers, please go to FiiO official website to download and install USB driver, download link www.fii.com/q1mkiifaq, driver installation tutorial please see Appendix 1 of this document, select K3 as output device on the computer.

- **How to select K3 as sound device:**

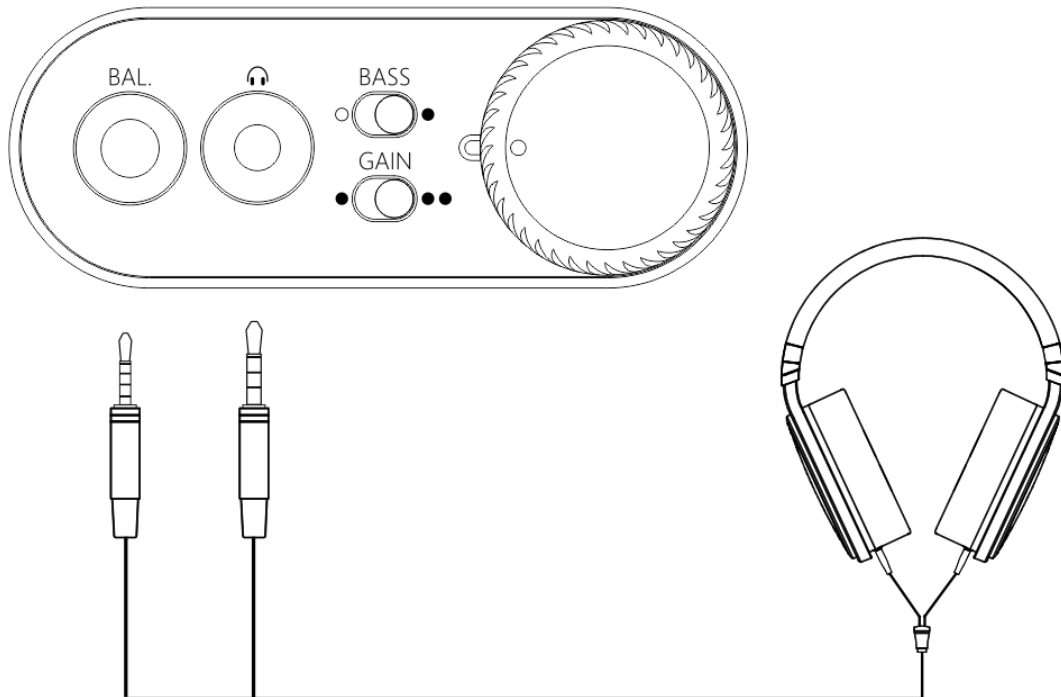
For example, Windows 7 system, right click on the desktop taskbar volume icon, then select the playback device to enter the "sound" management interface, finally Choose speaker "FiiO Q-series" as default.

note :

- ✧ USB mode(1.0 to 2.0) switch needs to re-plugged and connected to the computer
- ✧ Because K3 needs power from the source, and power supply and data translate share the same slot, it is designed for desktop computers or notebooks. Mobile devices are not recommended.
- ✧ When the phone is turned on or plugged in, the indicator light will flash then keep ON.
- ✧ When K3 is turned off or disconnected, the indicator will be off.

Step 2, select output jack according to the usage scene

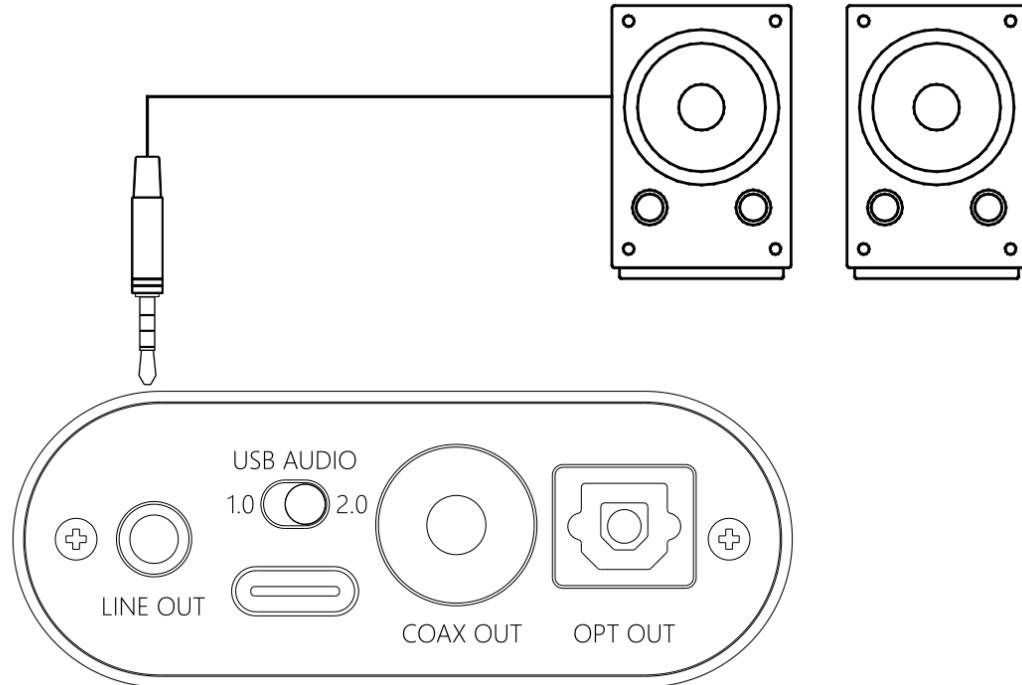
Scene 1: Connect to the headset using a 2.5mm or 3.5mm port



note :

- ✧ When both headphone jack and a BAL jack are plugged in, only the BAL jack will be valid;
- ✧ If you want to use the 3.5mm headphone jack, please unplug the 2.5mm balanced jack device;

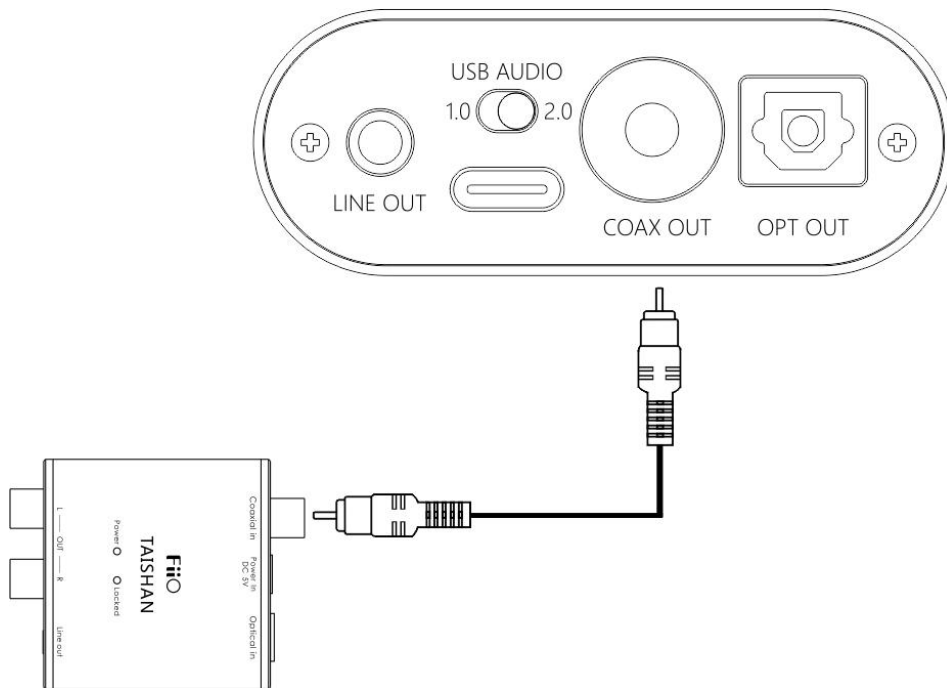
Scene 2: Connect to active speaker or amplifier with a 3.5mm audio cable



note :

- ✧ line out is controlled by the power/volume knob and can work with 2.5mm/3.5mm output at the same time ; but recommend to eject the 2.5mm/3.5mm headphones while using the line out.

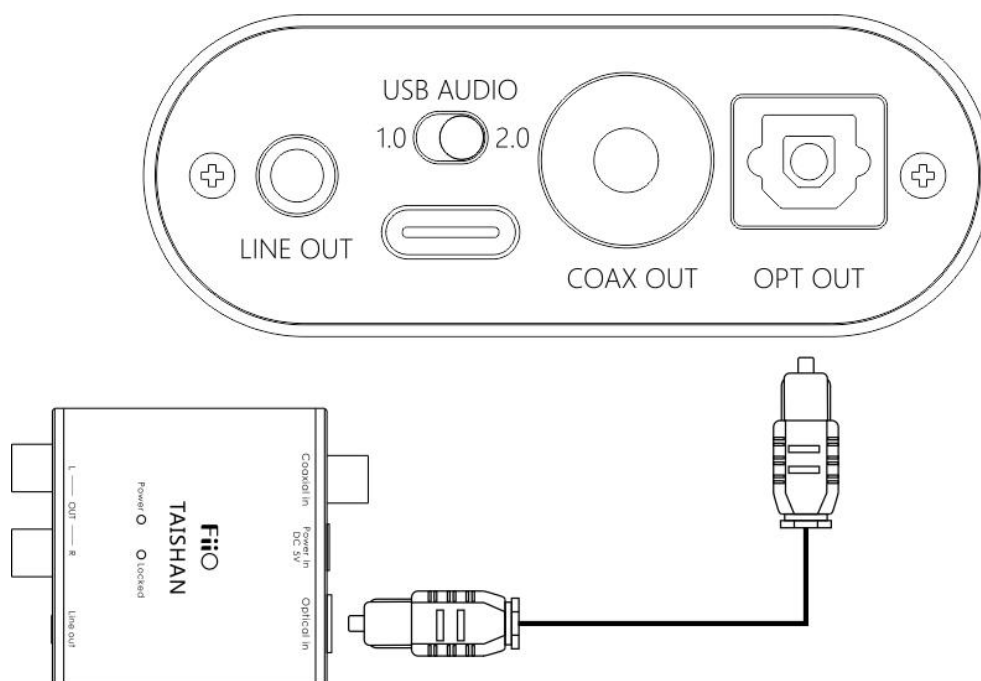
Scene 3: Connect to the amplifier with coaxial input



note :

- ✧ The coaxial output supports up to 192k sampling rate and DOP output of DSD64. If the device does not support, please adjust the audio output settings of the PC player;
- ✧ Power/volume knob adjustment is invalid to the coaxial output volume.

Scene 4: Connect to the device with optical input port



note :

- ✧ The coaxial output supports up to 192k sampling rate and DOP output of DSD64. If the device does not support, please adjust the audio output settings of the PC player;
- ✧ Power/volume knob adjustment is invalid to the optical output volume.

Step 3, play the song on the computer using the music app

First select K3 as the output device in the playback settings of the playback software. Take FB2000 as an example. Appendix document 2 is for reference. Then play the music and adjust the power/volume knob to

the appropriate volume to enjoy the music.

note :

✧ It is recommended to adjust the volume of the computer to the maximum. Control the output volume of the unit by adjusting the volume knob.

● **When playing songs with different sampling rates, the indicator light will change to display a specific color accordingly.**

- Playing the music with 48KHz sample rate or below, it will display blue;
- Playing the music with sample rate above 48KHz, it will display yellow;
- When playing a DSD track, it will display green.

● **Bass**

With the bass boost function switch on, there will be a strong bass effect when playing music.

● **Gain**

The maximum output with high gain is 6dB higher than the low gain, which is suitable for higher impedance headphones.

Please change the gain switch according to the following steps safely:

Turn off K3 first ---- turn the gain switch to the high gain position ---- turn on the unit then gradually adjust to appropriate volume.

note :

Switching to high gain during use will increase the output power suddenly, which may damage your headphones and hurt your ears.

5, safety instructions

- ★When the system is abnormal, try to re-plug in the USB cable.
- ★Before using, please adjust it to appropriate volume (the LINE OUT volume can be adjusted).
- ★ To avoid pop sound that can hurt your ears, it is not recommended to wear headphones before plugging the headphones.
- ★Do not repair by yourself, disassemble or put the product in a place with water
- ★When using headphones, you will not be able to hear the external environment. For your personal safety, please do use headphones in a dangerous environment.
- ★Switching to high gain during use will increase the output power suddenly, which may damage your headphones and hurt your ears.

6, troubleshooting

The following are some of the problems that may occur during the use and some solutions you could try. If you encounter an unsolvable problem, please contact FiiO customer service center (support@fiiio.com).

Fault 1: No sound output

- Check whether this unit is turned on.
- Check whether the latest driver is downloaded on the official website and installed correctly.
- Check whether Control Panel\All Control Panel Items \Sound shows "FiiO Q series"
- Check whether the 'FiiO Q series' in the "playback device" is the default device
- Check whether the headset is plugged in totally.
- Check whether the volume is too low, increase the volume of the connected device or adjust the volume knob of K3 to increase the volume of the unit.

Fault2: Small sound

- When using a high-impedance earphone, it is recommended to set the GAIN switch to "H" .

- You can increase the volume of the connected device or adjust the volume knob of K3 to increase the volume of the unit.
- In-ear earphone and headphones are recommended for PO or BAL output, and insertion of line output may result in less sound

7, Specification list

Basic parameter information	
name	K3
size	70mm x 58mm x 22mm
weight	82g(without battery)
Input power	DC 5V 500mAConnecting to a computer
Input port	USB Type C
Output port	3.5mmLinear output port 3.5mmHeadphone output port 2.5mmBalance output port, Coaxial output port Fiber optic output port
Recommended headphone impedance	16~300Ω
Supported sample rate	USB Audio 1.0 Maximum decoding support : PCM:96KHz/24bit

	USB Audio2.0Maximum decoding support : PCM:384KHz/32bit DSD:11289.6kHz (DSD256) Coaxial output : 192KHz/24bit Fiber output : 96KHz/24bit
Frequency Range	20Hz~80KHz
Line output amplitude	1.9Vrms
Single-ended output power	220mW (16Ω) 120mW (32Ω)
Balance output power	320mW (16Ω) 200mW (32Ω)
SNR	≥113dB

Note: Specifications are subject to change and are subject to change without notice.

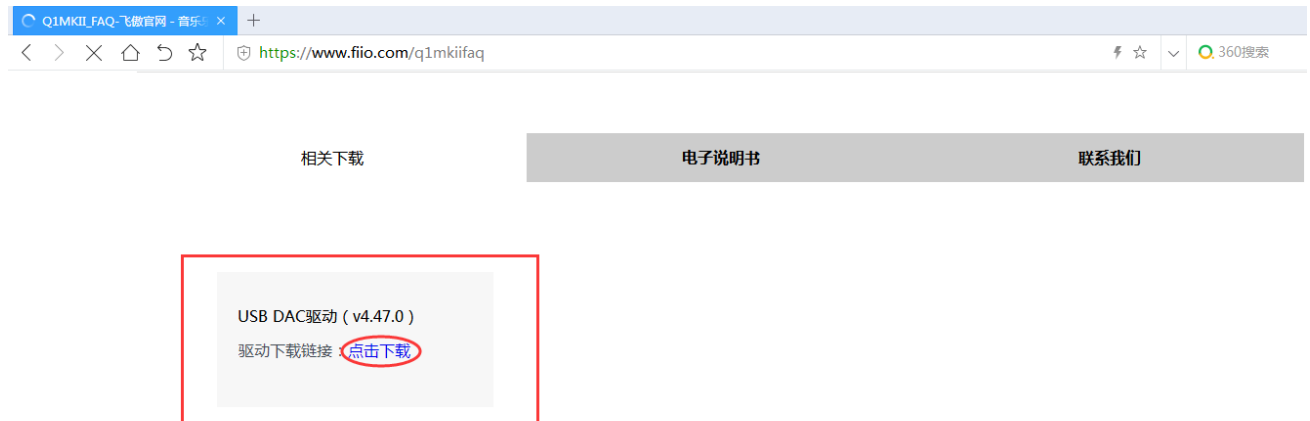
8, learn more

To learn more about FiiO products, please go to <http://www.fii.com>.

Appendix 1: How to install driver

Note: Please install the driver for K3 as follows (take win7 32-bit system as an example)

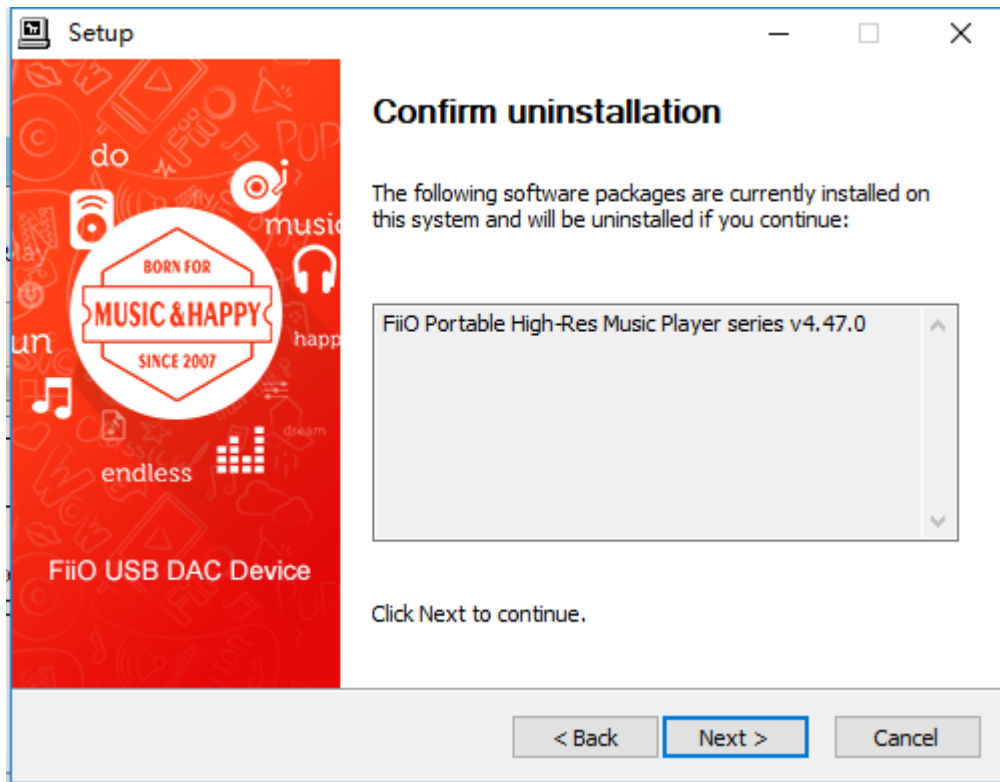
First visit driver download link to download the official latest driver, as shown below:



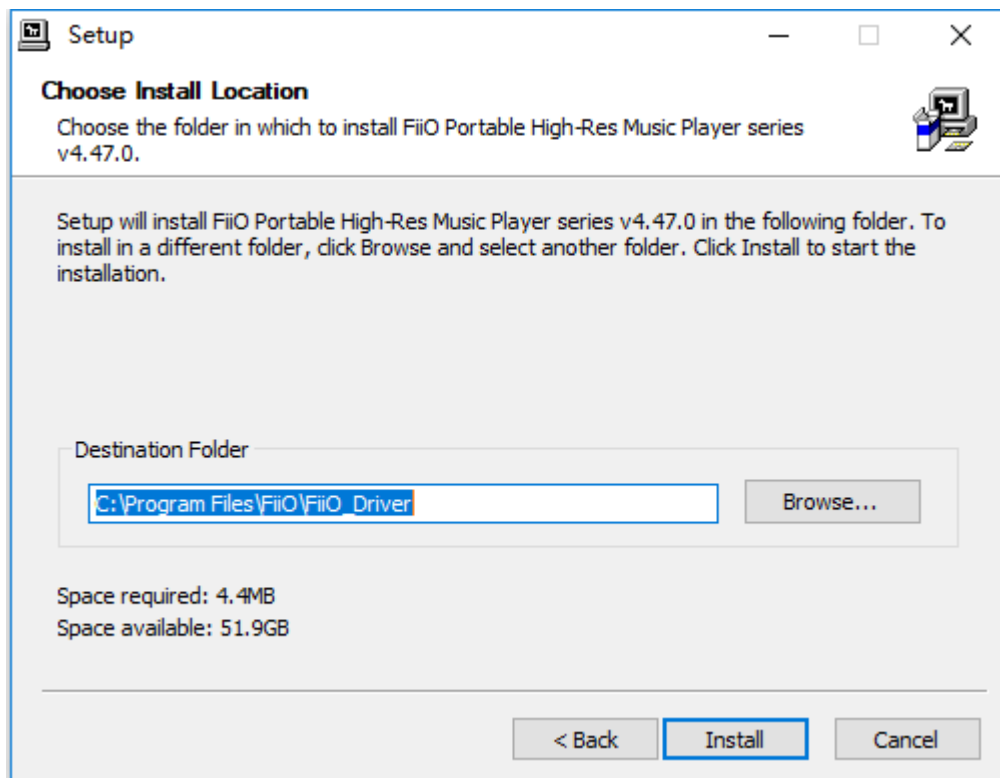
After the download is complete, unzip it , then double-click

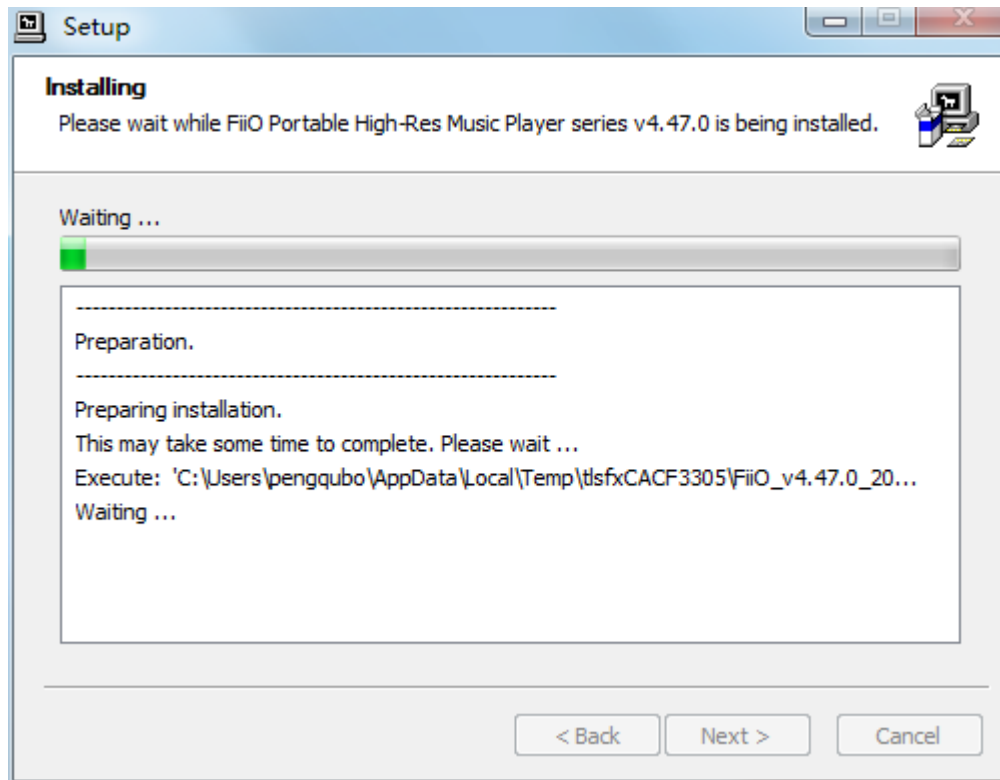
"FiiO_USB_DAC_Driver-V4.47.0.exe" to drive the application installer.

After running the program, follow the steps below:

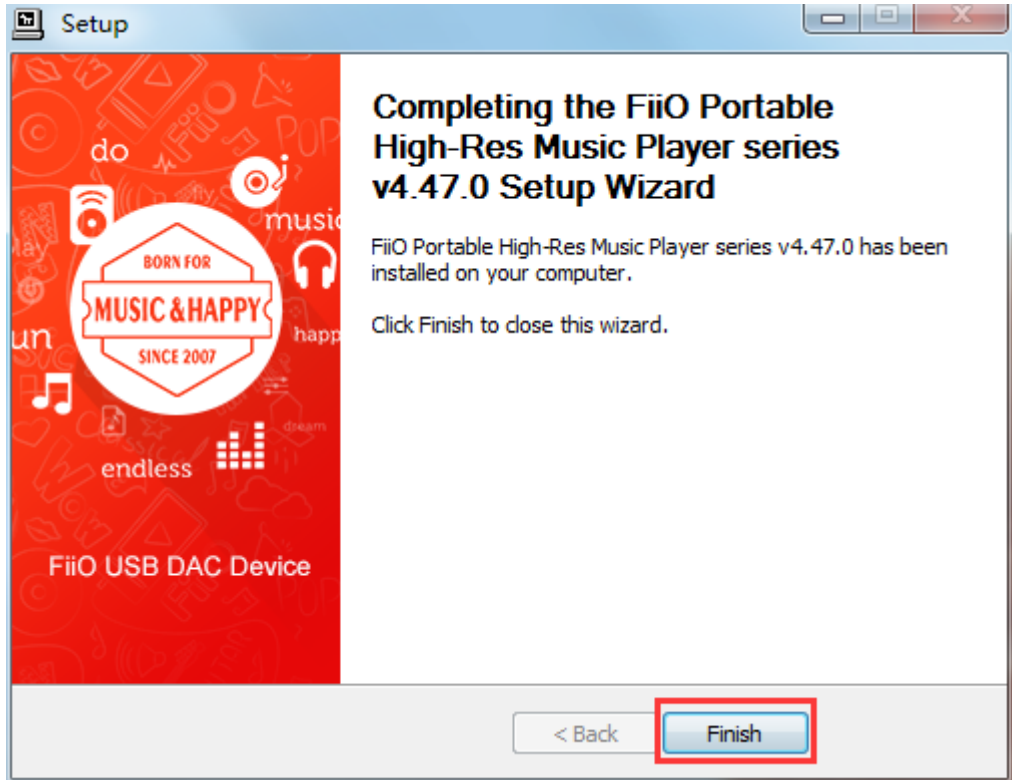
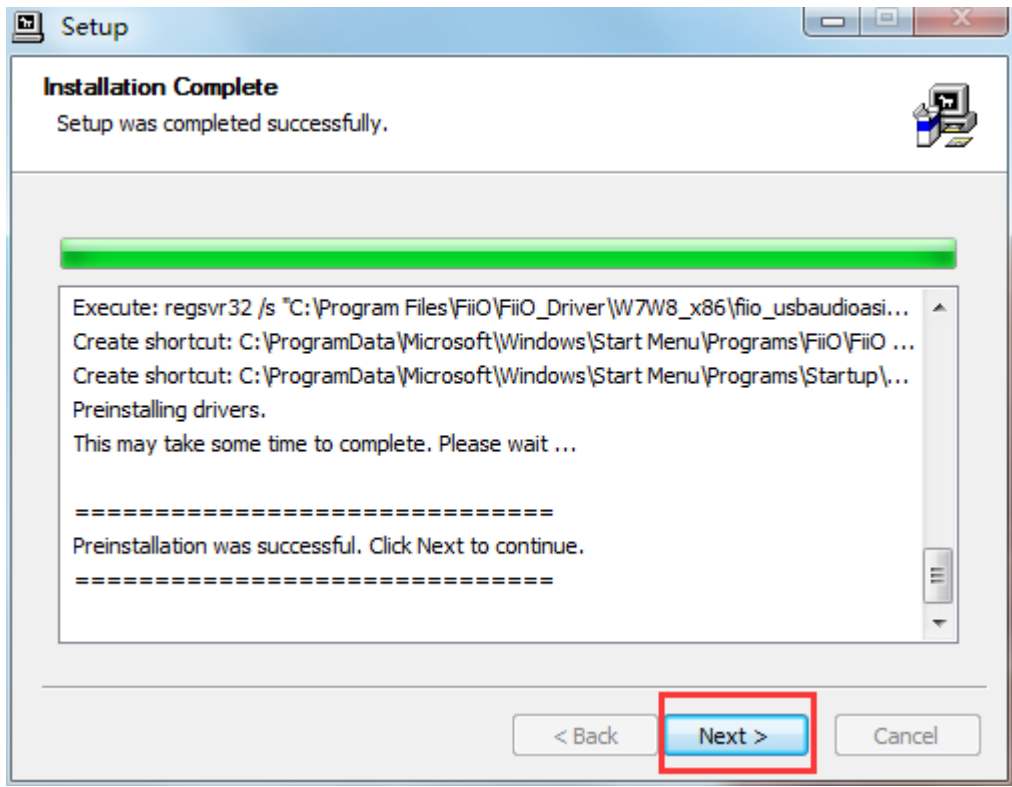


You can customize which disk to install on, or you can install it on the C drive as default. If the default C drive is installed, click "install"



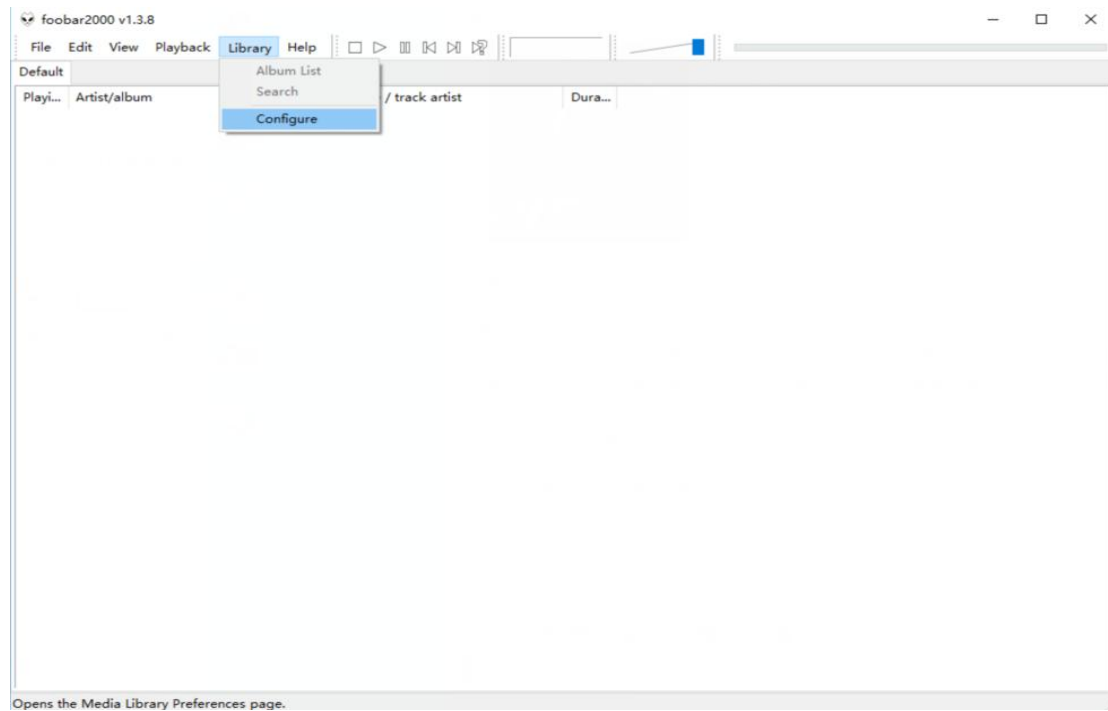


During the installation process, you may encounter 2-3 anti-virus software interception. You need to manually select "Allow this operation" or "Allow all operations of the program" . "Allow loading" (this process is very important if you block the operation or Blocking loading will lead to failed driver installation)

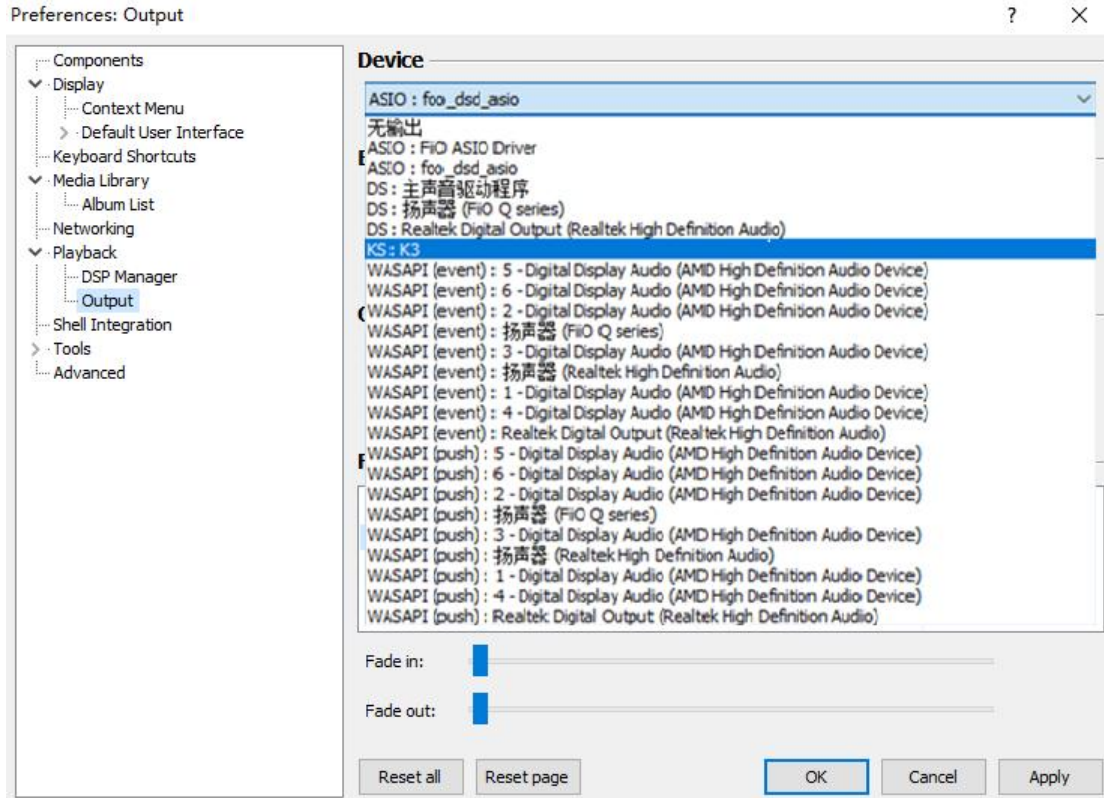


Appendix 2, FB2000 choose K3 operation tutorial

Open FB2000, select menu "Library - Configuration" to enter the parameter option setting interface, as below:



The "Play" - "Output" device can be selected, for example, KS: K3, click "Apply", and then click "Confirm", as shown below:



After selecting the output device, return to the main interface, select and play a song. Adjust it to appropriate volume, plug in your headphone and enjoy the music.

To play DSD songs, you can choose the following output:

- Components
- ▼ Display
 - Context Menu
 - > Default User Interface
- Keyboard Shortcuts
- ▼ Media Library
 - Album List
- Networking
- ▼ Playback
 - DSP Manager
 - Output
- Shell Integration
- > Tools
- Advanced

Device

DS : 扬声器 (FiO Q series) ▼

无输出

ASIO : Crescent USB AUDIO 2.0 ASIO Driver

ASIO : DSDTranscoder

ASIO : FiO ASIO Driver

ASIO : foobar2000 ASIO Driver

ASIO : TUSBAudio ASIO Driver

DS : 主声音驱动程序

DS : 扬声器 (FiO Q series)

DS : 扬声器 (2- Realtek High Definition Audio)

DSD : ASIO : Crescent USB AUDIO 2.0 ASIO Driver

DSD : ASIO : DSDTranscoder

DSD : ASIO : FiO ASIO Driver

DSD : ASIO : foobar2000 ASIO Driver

DSD : ASIO : TUSBAudio ASIO Driver

DSD : WASAPI (事件) : 扬声器 (2- Realtek High Definition Audio)

DSD : WASAPI (事件) : 扬声器 (FiO Q series)

DSD : WASAPI (推送) : 扬声器 (2- Realtek High Definition Audio)

DSD : WASAPI (推送) : 扬声器 (FiO Q series)

WASAPI (事件) : 扬声器 (2- Realtek High Definition Audio)

WASAPI (事件) : 扬声器 (FiO Q series)

WASAPI (推送) : 扬声器 (2- Realtek High Definition Audio)

WASAPI (推送) : 扬声器 (FiO Q series)

Name	Fade in	Fade out
Pause and stop	100 ms	100 ms
Seek	100 ms	100 ms
Manual track change	100 ms	100 ms
Automatic track change	0 ms	0 ms

Fade in:

Fade out:

Reset all
Reset page
OK
Cancel
Apply