

ifi



Pro iDSD *Signature*

Tech Lowdown

Reference-Class DAC/Preamp, Network Streamer & Headphone Amplifier

The Pro iDSD Signature is the new flagship reference-class DAC.

The Signature edition builds on the strengths of the original, multi-award winning Pro iDSD

Even more ultra-grade audiophile components designed to take your listening experience to a higher plane than ever before.



Reference-Class DAC/Preamp, Network Streamer & Headphone Amplifier

- Sonically-darker background and more punchy bass
- Upgraded power-supply components to lower overall system noise 300%
- Precisely matched NOS GE5670s tubes
- Added support for USB1.0 (PS4/PS5)
- New Aluminum remote control
- Top-of- the-range iPower Elite power supply included



Cutting-Edge Playback

- Airplay network audio playback – iPhone, iPad or Mac
- DLNA network audio playback – smartphones, tablets, Windows/Linux computers
- Hard disc drive (HDD)
- USB memory stick
- SDHC memory card
- Streaming – Spotify, TIDAL, Napster, QQ Music and more



Front Connections



Headphones 6.3mm
Single-Ended

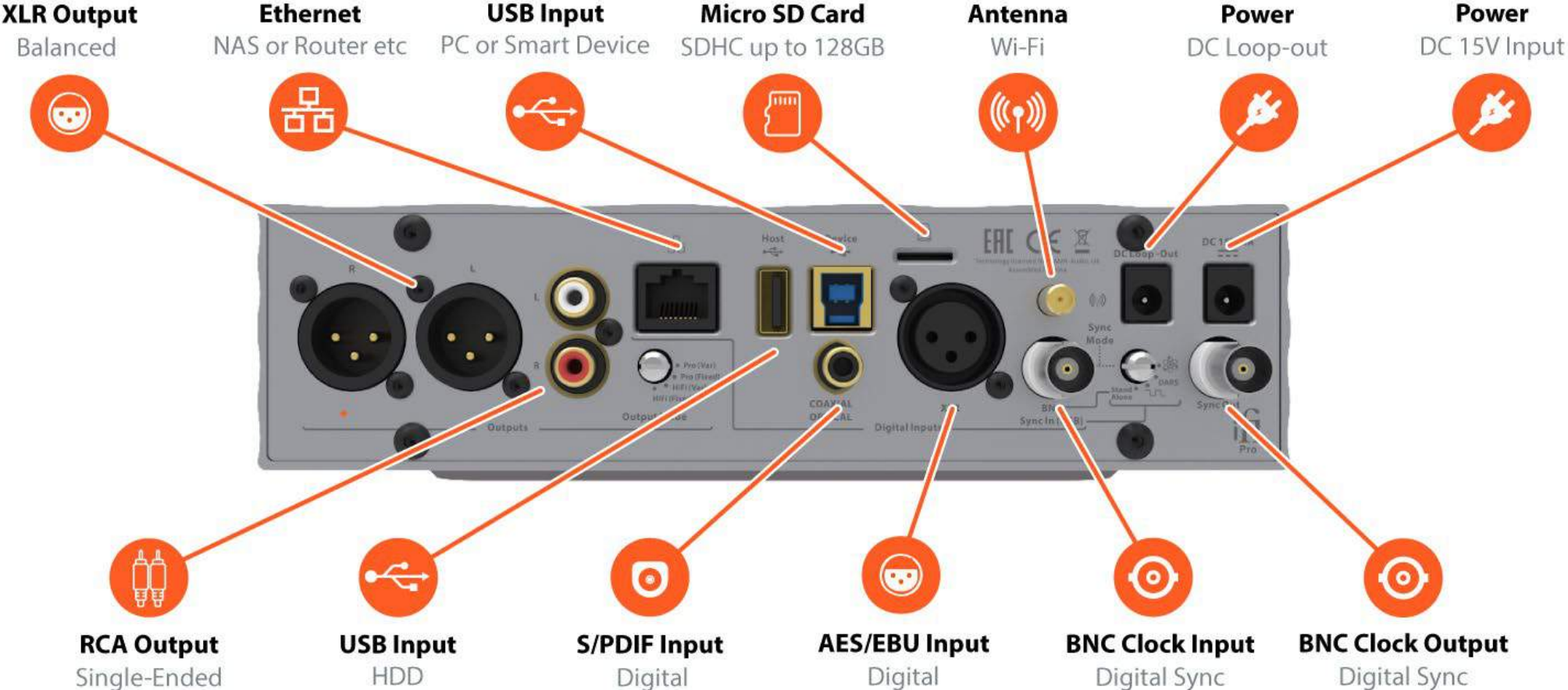


Headphones 3.5mm
S-Balanced



Headphones 4.4mm
Balanced

Rear Connections



Input Selector

Use the selector to cycle through the following input options:

- Wi-Fi | Ethernet | Hard Disk | Micro SDHC
- Device USB (connect to a computer)
- XLR Digital Input
- BNC Digital Input

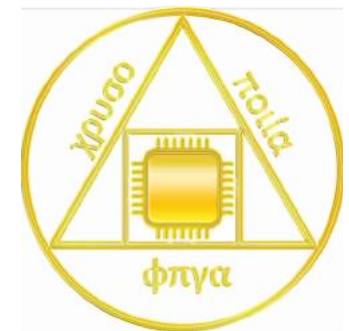
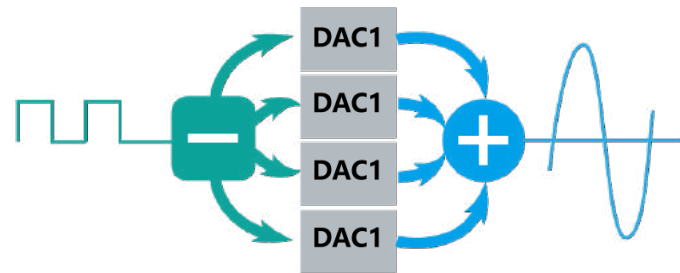
Also available via the input selector are:

- Brightness (press to adjust)
- Polarity (hold to adjust)



Reference Class

- Quad-stack DAC – 4 x DACs in interleaved configuration enables exceptional resolution
- Crysopeia FPGA Digital Engine delivers bespoke digital filtering and up-sampling
- Powerful XMOS XU216 X-Core 200-Series chipset processes incoming digital data
- Discrete, fully-balanced Class A amplifier stage with adjustable gain



More Than Whisper Quiet



Improved low-jitter clock with
> 20dB better performance

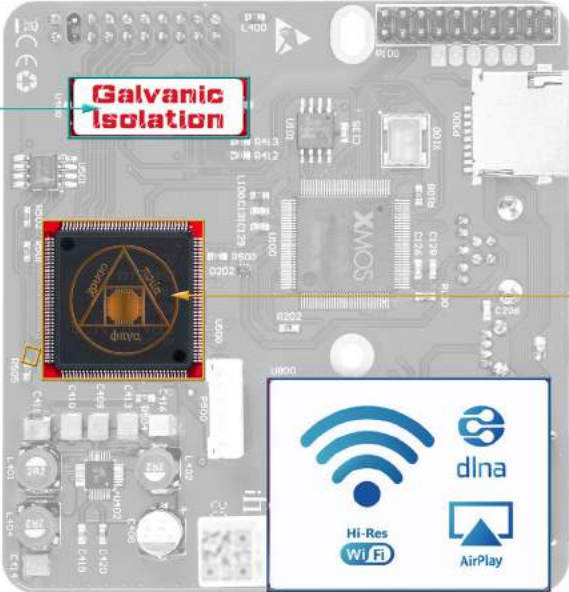
Galvanic Isolation

Zero-jitter memory buffer and
galvanically-isolated inputs
eradicate digital distortion

PCB

Galvanic Isolation

True Galvanic Isolation of signals and clocks



High-performance FPGAs with copper process technology

Panasonic
OS-CON

Excellent noise reduction capability and frequency characteristics



GMT femto precision clocking

KEMET
CHARGED

Tantalum Polymer Capor Itra-low noise/distortion



muRata

INNOVATOR IN ELECTRONICS
Murata Low-ESR high Q multilayer capacitor

ELNA

Elna Dynacap Low Impedance Super Capacitors



Quad stack – interleaved Burr-Brown DACs

TEXAS INSTRUMENTS
Precision low-noise power supply

ELNA
Elna Silmic II capacitors

Class A
TubeState

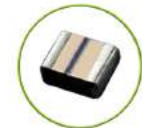
Class A Solid-State, J-FETs and Fully-Discrete



Hand selected NOS 5670 Tubes



XMOS 16-Core controller with iFi optimised firmware

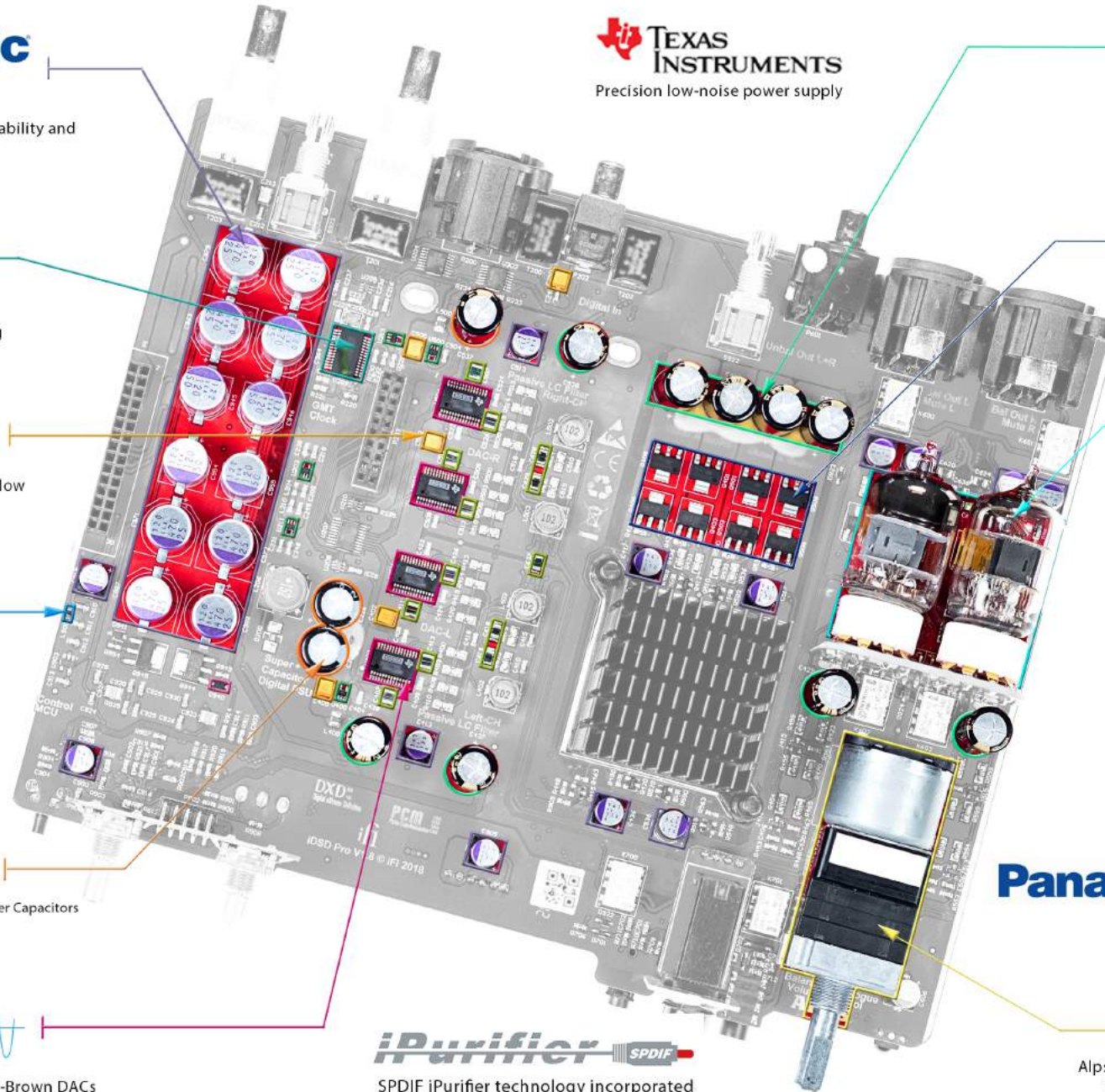


Panasonic ECPU

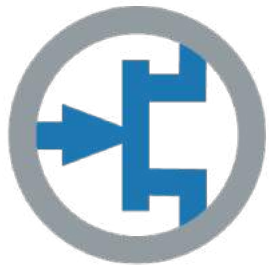
Panasonic film capacitors

iPurifier SPDIF
SPDIF iPurifier technology incorporated

Perfecting the Art of Electronics
ALPS
Alps 6-Track fully balanced motorised Volume control with servo system



Solid State | Tube | Tube+



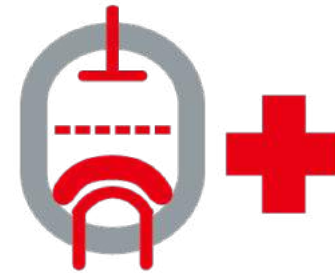
Solid -State

A purely solid-state J-FET based circuit of fully-discrete Class-A topology



Tube

The J-FET circuitry is switched to the valve Class-A section based on two GE5670



Tube+

Negative feedback to a minimum. Greater amount of the tubes' natural harmonics is produced (even order harmonics dominate).

Specifications

Sample rates	PCM 768kHz / DSD 49.152MHz (DSD 1024) / MQA 352.8KHz/DXD (2xDXD)
Inputs	USB / AES3 (XLR) / S/PDIF (coaxial/optical combo) BNC / Ethernet / Wi-Fi / Micro SD
Filters	Bit Perfect / Bit Perfect+ / Gibbs Transient Optimised / Apodising / Transient Aligned
Gain (headphone section)	User-selectable: 0dB, 9dB and 18dB
Dynamic range	119dBA (solid-state, PCM, -60dBFS)
Output power	(16, balanced/single-ended): >4,200mW / >1,575mW
Output voltage	(600, balanced/single-ended): >11.7V / >5.9V

Input voltage (Pro iDSD)	DC 9V/6.7A – 18V/3.35A
Input voltage (iPower Elite):	AC 85 – 265V, 50/60Hz
Power consumption	< 22W idle, 50W max
Dimensions	213 x 220x 63 mm
	8.4" x 8.7" x 2.5"
Net weight	1980 g
	4.37 lbs

ifi
audio