

ifi



hip dac2

Tech Lowdown

Portable USB DAC/Amp

The hip-dac2 has been upgraded to give you an even more pleasurable portable audio experience.

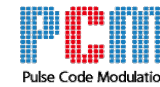
- NEW! Now full MQA decoder
- NEW! Upgraded GMT clock
- Extruded aluminium enclosure now finished in vibrant 'sunset orange'

Replaces inferior DAC and amp circuitry in smartphones, tablets, PCs and Macs.



Hi-Res DAC/Amp

- Powerful 16-core XMOS chip processes data over USB
- Now a full MQA decoder
- Completes all three unfolds to deliver the highest possible sound quality
- Handles up to PCM 384kHz and DSD256



Double-DSD128 Quad-DSD256

5.6 MHz 6.2 MHz 11.2 MHz 12.4 MHz

176.4 kHz 192 kHz 352.8 kHz 384 kHz

Audio Format LEDs



PCM 88.2/96/176.4/192/352.8/384kHz



MQA Studio



DSD 256



PCM 44.1/48kHz



Original Sample Rate - MQB



MQA



DSD 64/128

Unique Sonic Tailoring

Tailor sound to suit your headphones and personal sonic taste

XBASS



Analogue bass boost.

Enhances low frequencies without muddying the mid-range.

Balanced

- Balanced analogue circuitry design for ultra-low distortion
- Outstanding components including iFi OV op-amp, TDK C0G capacitors and a high-quality rotary volume pot
- 4.4mm balanced analogue output
- 3.5mm S-Balanced analogue outputs cuts distortion by 50% with single-ended headphones



Upgraded GMT clock

- Upgraded Global Master Timing clock circuitry
- Eradicates jitter and enhances sound quality



Connection Guide



Headphones 4.4mm
Balanced



Headphones 3.5mm
Single-Ended

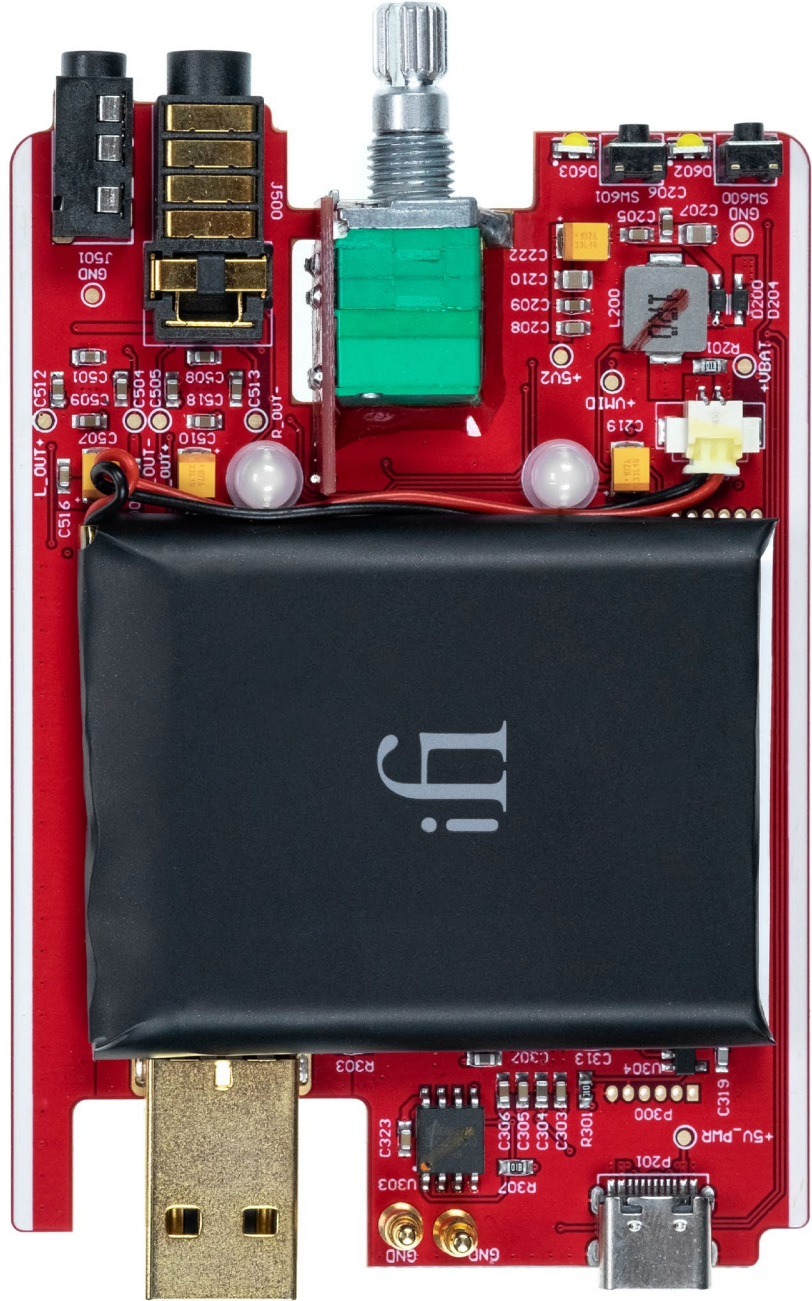
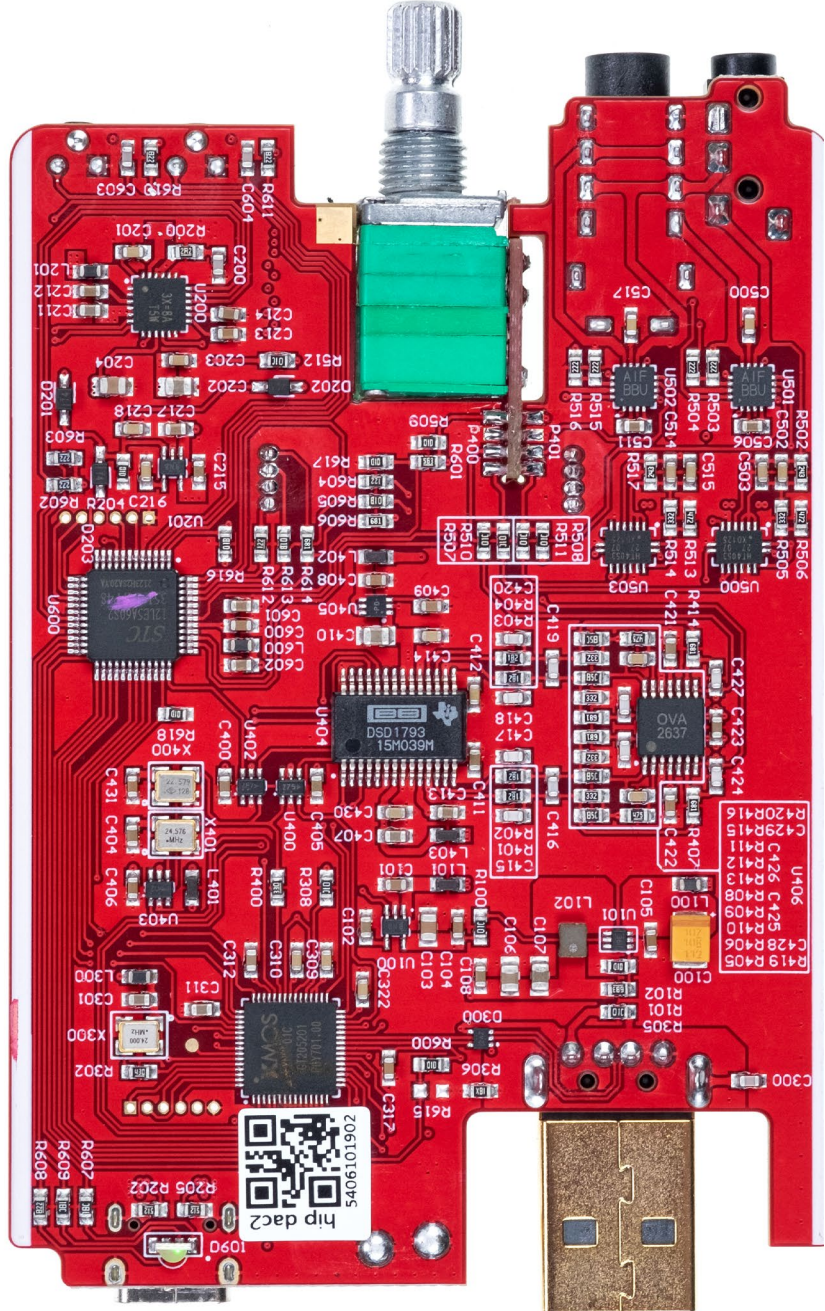


USB Input
Phone/PC



USB-C Charging
5V only

PCB



Specifications

Format Supported	DSD	DSD256/128/64, Quad/ Double/Single-Speed DSD
	PCM	384/352.8/192/176.4/ 96/88.2/48/44.1kHz
	DXD	384/352.8kHz
	MQA	384/352.8kHz
Digital Input	USB 3.0 Type 'A' (USB2.0 compatible)	
Headphone Outputs	Balanced	4.4mm
	S-Balanced (S-E)	3.5mm
Power Output	Balanced	400mW@32Ω; 6.3V@600Ω
	S-Balanced (S-E)	280mW@32Ω; 3.2V@600Ω

Battery	Lithium-polymer 2200mAh Approx. 8 hours
Power System	Charging via USB-C, BC V1.2 compliant up to 1000mA charging current and 6.3 volts
Power (max)	<2W idle, 4W max
Dimensions	102 x 70 x 14mm
	4.0" x 2.8" x 0.6"
Net weight	125g
	0.28lbs

ifi
audio