

ifi



uno

Tech Lowdown

# Hi-res DAC (Digital to Analogue Converter) and Headphone Amp

The iFi Uno is the first rung on the ladder to upgrading audio.

It is a desktop DAC/headphone amp for people who may not know what a DAC is, but know they want better sound quality when they

- listen to music
- stream movies or TV shows
- play games
- enjoy podcasts or YouTube

The iFi Uno can be used as a DAC/amp or as a pure DAC.



# Hi-Res DAC

- Hi-res PCM up to 32-bit/384kHz
- Full native DSD256
- MQA (Renderer)



# Connections

Connect the Uno via USB to:

- Windows PCs
- Apple Macs
- Smartphones
- Tablets



USB



S-BAL 3.5 mm output



No power source is needed as it takes power from the device to which it is connected.

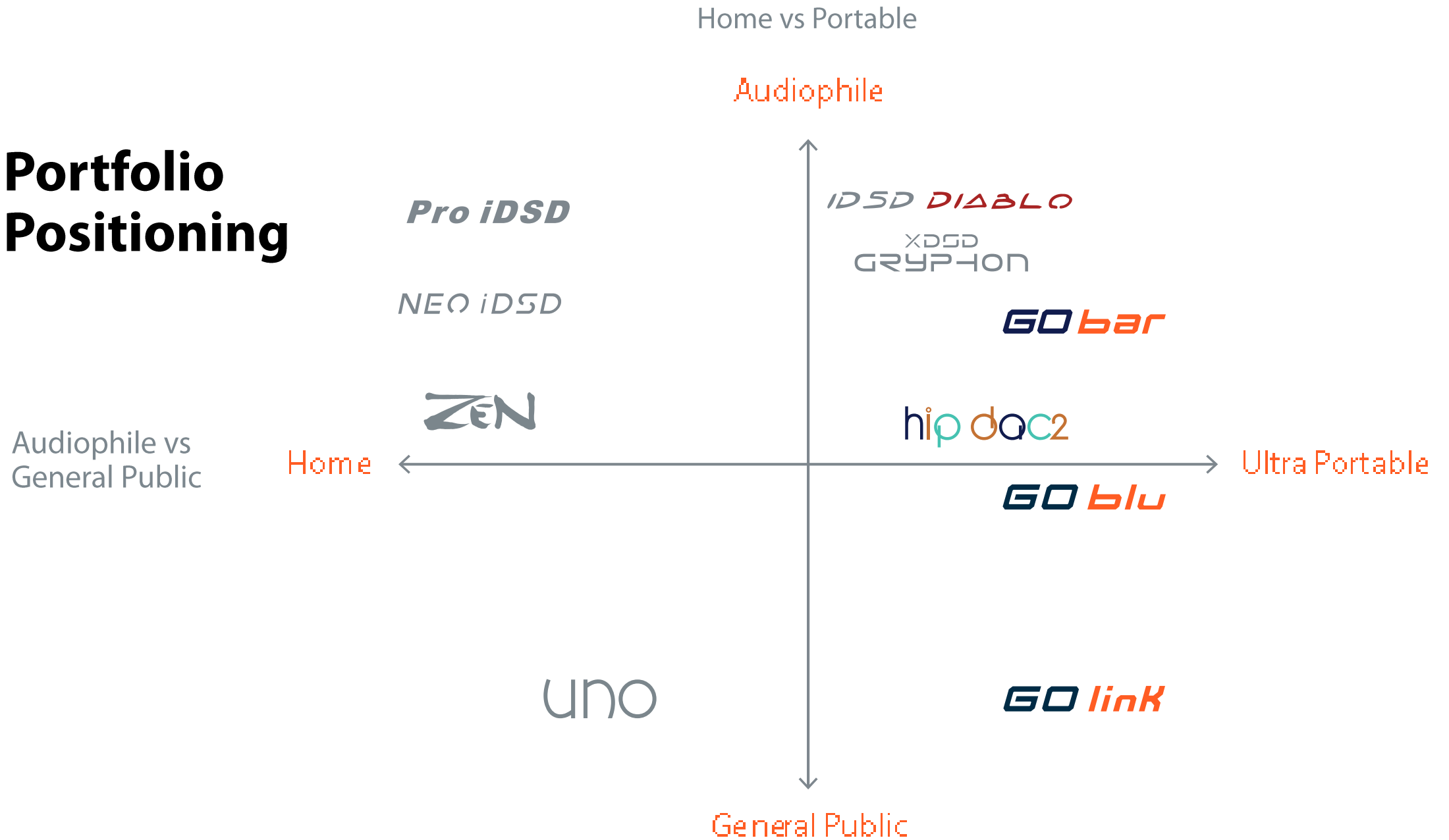
Connect headphones/iEMs, powered speakers or an amp and separate speakers.



RCA Analogue output



# Portfolio Positioning



# Target Audience

GEN-Z. The young professional.

- 18 – 25 years old
- Male & female
- Music lovers & makers
- Community minded
- Strong feeling of belonging
- Prioritises experience & design over technology
- Spends: ££
- Hard to please
- Easy to annoy

Where to find them:

- YouTube
- TikTok
- Twitch
- Instagram
- Pinterest
- LinkedIn
- Reddit
- Twitter





## Unique Selling Points (USPs)

- **Three easily selectable modes – Music, Movies, Games** (excellent for a first-time upgrader)
- **DRE - Dynamic Range Enhancement**
- **MQA** (at such an affordable price tag)
- **Digital Filter Upgrades** (for the more adventurous user)

It is a Hi-Fi grade DAC.  
Hi-Res DSD256 & PCM384

# EQ Mode Selection

One device.  
Three selectable modes.  
Three end user scenarios.

Music Mode

**Work** | Unlock limitless sound from your favourite artists.

Movie Mode

**Chill** | Never miss a moment with crisp, clear, dialogue.

Game Mode

**Play** | Improve your gameplay with enhanced footsteps and environmental detection.





# DRE (Dynamic Range Enhancement)



In music production, dynamic range means the difference between the loudest and quietest sounds. It's measured in decibels, or dB for short. In a single audio track, dynamic range means the dB difference between the loudest and quietest moment in the audio file.

You can think of the dynamic range in a system as the space between the noise floor and the clipping point. When a sound goes below the noise floor you won't be able to tell the difference between the signal and the system noise of the medium. When a sound goes above the clipping point, the tops of its waveform will get abruptly cut off, causing harshness and distortion.

iFi's proprietary technology extends the Dynamic Range by 6 dB or more, for an improved listening experience.



## S-Balanced

Connect via analogue 3.5 connection.

Our ***S-Balanced*** technology delivers the advantages of a balanced connection even when using an unbalanced one.

On headphones, this means lower distortion, less interference and less crosstalk.



## PowerMatch

***PowerMatch*** adjusts the gain of the Uno so that it always functions at the right level for the headphones being used.

- OFF – best for IEMs (In-Ear Monitors)
- ON – best for on/over ear headphones

# Audio Format LEDs



PCM 44.1/48/88.2/96kHz



PCM 176.4/192/352.8/384kHz



DSD 64/128

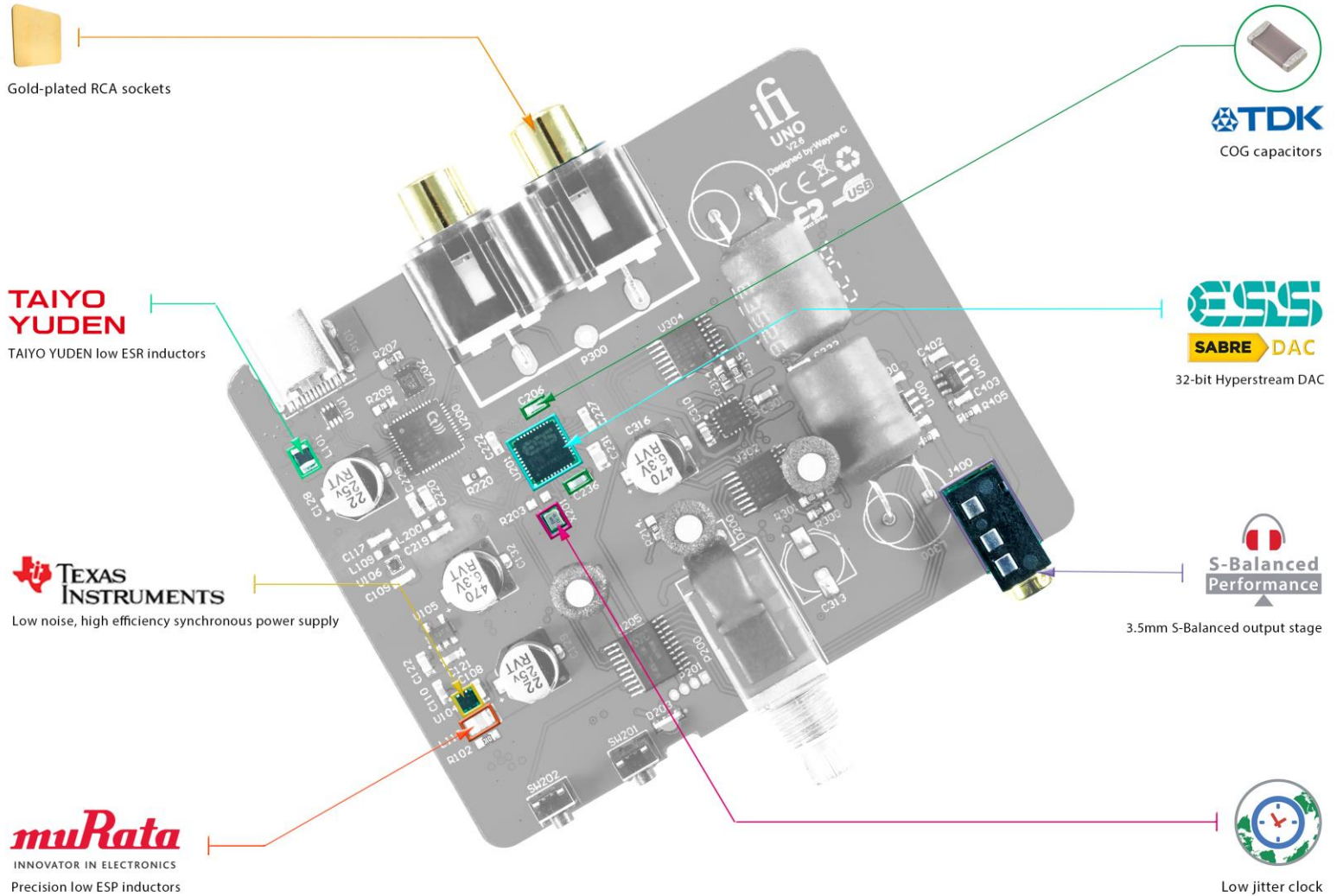


DSD 256



MQA

# PCB Diagram



Gold-plated RCA sockets

**TAIYO YUDEN**  
TAIYO YUDEN low ESR inductors

**TEXAS INSTRUMENTS**  
Low noise, high efficiency synchronous power supply

**muRata**  
INNOVATOR IN ELECTRONICS  
Precision low ESR inductors

**TDK**  
COG capacitors

**ESS**  
SABRE DAC  
32-bit Hyperstream DAC

**S-Balanced Performance**  
3.5mm S-Balanced output stage

**Low jitter clock**

# Specifications

Digital Inputs	USB-C
Formats	DSD 256 /11.3MHz
	DXD 384kHz
	PCM 384kHz
	MQA
DAC	Bit-Perfect DSD & DXD DAC by ESS

Line Section	
Outputs	2V max.
Output Impedance	<100Ω
SNR	≥119dB
DNR	≥115dB @ 0dBFS
THD+N	≤0.03% @ 0dBFS

Headphone Section	
Outputs	≥2.6V / 3.5V max. at 32 Ω / 300 Ω
Output Power	≥211mW @ 32Ω; 39mW @ 300Ω
Output Impedance	<1Ω
SNR	≥113dB
DNR	≥110dB @ 0dBFS
THD+N	≤0.02% (1.27V @ 16Ω)
Channel separation	≥80dB (1kHz/600Ω)
Frequency Response	10-80kHz(-0.5dB)

Power supply requirement	USB-C 5V/0.5A
Power consumption	No Signal ~0.8W
	Max Signal ~1.5W
Dimensions	88 x 81 x 26 mm
	3.5" x 2.8" x 1.0"
Weight	92 g
	0.2 lbs

ifi  
audio