

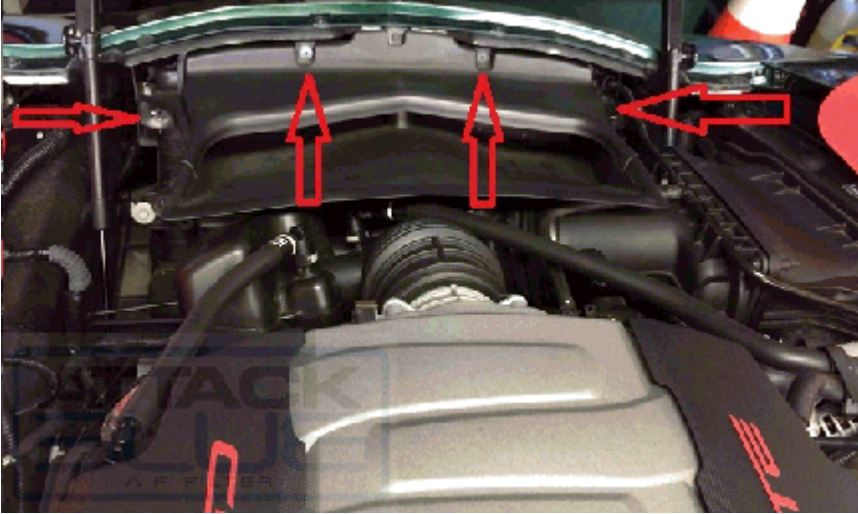


Installation Instructions

2014-2019 C7 Corvette Attack Blue Nanofiber Air Filter

STEP 1

Start by removing these 4 bolts



STEP 2:

Next push UP on the red locking tab (see arrow) to remove the harness to the MAF sensor



STEP 3:

Push the grayish button and then pull up to disconnect both lines (see arrows).



STEP 4:

Loosen both screws. One that connects the rubber tube to the throttle body and the other to the factory air cleaner lid (see arrow)



STEP 5:

Loosen the 2 screws on the factory air cleaner lid. (The stay within the lid & don't come completely out). Remove the stock air filter.



STEP 6:

Notice the slot on the inside of the factory air cleaner lid. This is where the filter's urethane ring will be seated in. It's a good idea to pre-fit the filter here just to see how it goes and will seal up when you actually install it.

NOTICE: The red arrows simply represent the bottom of the lid which comes into contact with the filter first when closing the lid. We will focus on this in step 9



STEP 7:

Install the attack Blue Filter into the factory air cleaner housing.



STEP 8:

After the filter is installed, reattach the factory air cleaner lid by placing the 2 "male" tabs into the 2 "female" slots. Sometimes the filters urethane ring gets a little in the way. Simply wiggle the lid around & push down to make sure its all the way down & in.

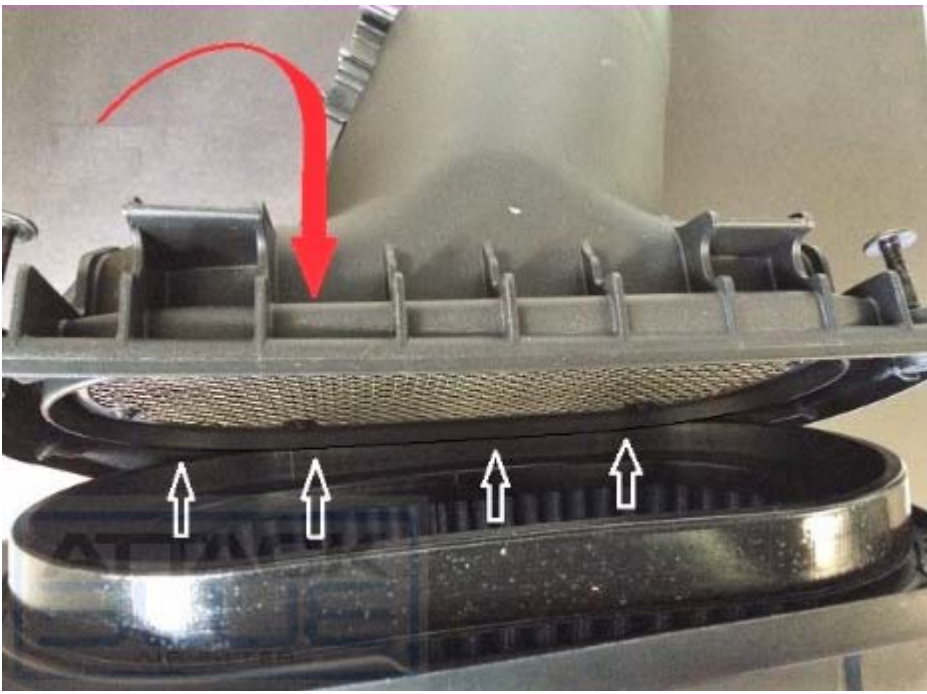


STEP 9:

While keeping the 2 tabs in the slots, slowly swing the factory air cleaner lid up to close and seal.

IMPORTANT, While bringing the lid up to close, watch & make sure the bottom of the filters urethane ring is landing into the lids slot (See arrows).

Make sure the filters entire urethane ring is fitting into the lids slot to make a good seal.



STEP 10

Place back, re attach & tighten all screws & bolts to the proper torque spec.