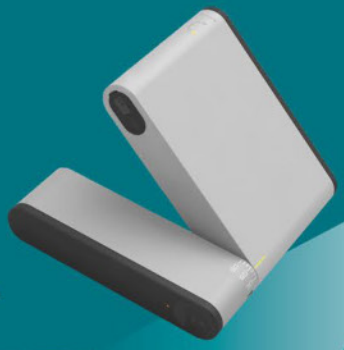




iSavi™

Satellite Terminal

EASY • RELIABLE • GLOBAL



The Wideye™ iSavi™ terminal is the first and only satellite terminal developed for Inmarsat's IsatHub service.

iSavi™ is lightweight, highly portable and is quick and easy to set up with no technical expertise or training needed, enabling you to get online via a satellite connection within minutes.

FEATURES

- Dependable Smartphone/Tablet-to-Satellite connectivity > Voice, data and text
- Connect from anywhere with no roaming charges
- Compact and portable
- Wi-Fi connection shared with your friends and colleagues within a 30 metre range
- User friendly operation via Smart Apps
- Power consumption is low and the battery can be recharged by an AC power adaptor, car charger adaptor or by solar panel
- Built-in firewall
- Dust and splash resistant (IP65)

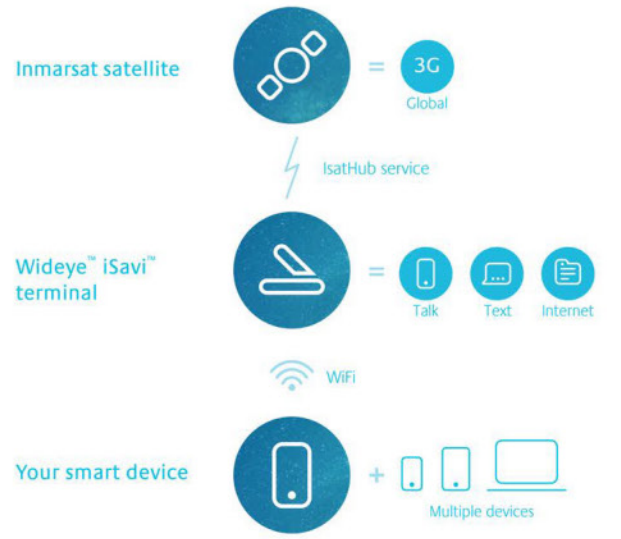
Talk

Text

Internet

Global

HOW IT WORKS



Technical Specifications

Certificate of Compliance

- CE
- FCC
- Industry Canada (IC)
- RoHS2 Compliance
- WEEE
- GMPCS MOU-ITU registry
- Inmarsat Type Approval Certification (TAC)
- UL/IEC,UN,PSE - For Battery Pack Safety

Operating Frequency

Satellite Transmit: 1626.5 – 1660.5 MHz & 1668 – 1675 MHz
 Satellite Receive: 1518 – 1559 MHz
 GPS Frequency: 1574.42 – 1576.42 MHz

Services

Standard IP: Up to 240/384kbps (send & receive)
 Short Message Service(SMS): Up to 160 characters (standard)
 Larger SMS content (> 160 characters): Supported as multipart or segmented SMS
 Voice Connectivity: Built-in SIP server using Apps on Smart Devices
 Data Connectivity: Wi-Fi 802.11 b/g/n Access Point with internal Wi-Fi Antenna

Power Requirement

Power adaptor: Input: 100 - 240VAC
 Output: +18VDC, 65 watt

Battery

Standard: 10.8V @ 3Ah Li-ion Battery Pack
 Optional: 10.8V @ 6Ah Li-ion Battery Pack
 Operating time: 2.5 hours Li-ion Battery Pack
 Standby time: 24 hours Li-ion Battery Pack

Environmental

Operating Temperature: -25°C to +55°C (with DC supply)
 -20°C to +55°C (with battery)
 Storage Temperature: -40°C to +80°C (Transceiver)
 -20°C to +40°C (Battery)
 -20°C to +40°C (Transceiver with battery)
 Battery Charging Temperature: 0°C to +40°C
 Storage Humidity: 95% RH (non-condensing at +40°C)
 Ingress Protection: IP65 Compliant
 UV resistant

Physical Interfaces

- 1 x DC Power Supply Connector on the Battery Unit
- 1 x Power Button (Push Switch with bi-colour red and green LED) on the Main Unit
- 1 x Exit Pointing Button (Push Switch with bi-colour red and green LED) on the Main Unit
- 4 x Antenna Pointing LEDs (bi-colour red and green LED) on the Main Unit
- Battery Level Indicator Button (single colour LED x4) on the Battery Unit
- 1 x Micro-SIM card slot
- Security lock slot
- Micro USB for maintenance use only

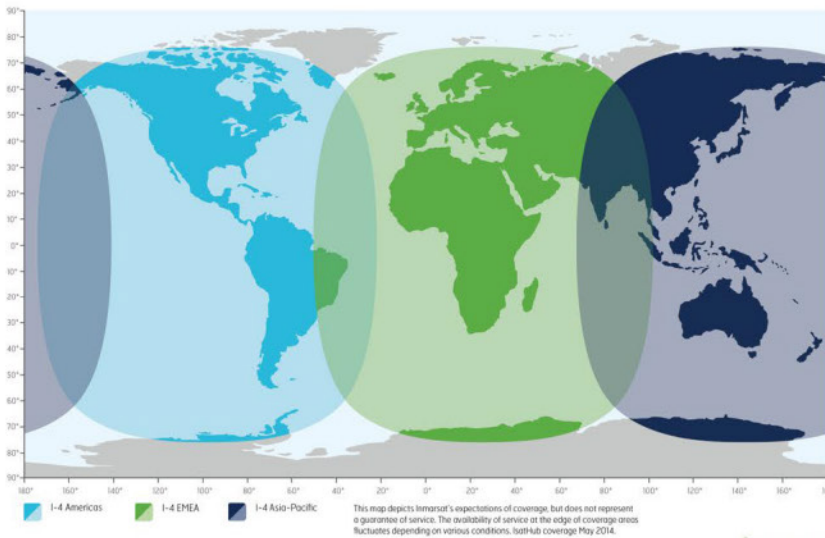
Physical Data

Overall Terminal:
 Dimension: 180 x 170 x 30 mm
 7.09 x 6.69 x 1.18 in
 Weight: 880g
 1.94 lb

Transceiver:
 Dimension: 130 x 170 x 30 mm
 5.12 x 6.69 x 1.18 in
 Weight: 620g
 1.37lb

Standard Battery Pack:
 Dimension: 50 x 170 x 30 mm
 1.97 x 6.69 x 1.18 in
 Weight: 260g
 0.57 lb

IsatHub coverage



inmarsat.com/isathub



iSavi™ operates over the Inmarsat-4 (I-4) satellite and ground networks, which has global coverage (except for extreme polar regions), at an average availability of 99.9 per cent

The service is accessed via Control and Voice apps (available for download on App Store and Google Play) downloaded onto a smart phone or tablet.



Control app

These 2 apps connect you to the I-4 network via the iSavi™ satellite terminal that has been type approved to work over Inmarsat's network.

The control app provides set-up assistance and gives you full control over access to the IsatHub service as well as visibility of data usage from each device sharing the iSavi™ connection.



Voice app

The voice app enables you to use your smart device to make and receive voice calls via iSavi™'s dedicated high-quality voice line, as well as sending and receiving text messages.

Globalsat USA

10404 W. State Road 84,
 Suite 101 Davie, FL 33324
Tel: +1 (561) 208 6088



Addvalue Innovation Pte Ltd. 8 Tai Seng Link, Level 5 (Wing 2), Singapore 534158.
 Tel: +65 6509 5700, Fax: +65 6509 5701, Website: www.addvaluetech.com

© 2014 Addvalue Innovation Pte Ltd. All rights reserved. Addvalue Innovation may have pending patent applications, trademarks or registered trademarks, copyrights, or other intellectual property rights covering subject matter in this document. The furnishing of this document does not give you any license to these intellectual properties. This material may contain unintended errors or omissions and is subject to change without notice. It is provided as is and without any express or implied warranties, including merchantability, fitness for a particular purpose and non-infringement. Addvalue shall not be liable for any special, indirect, incidental or consequential damages as a result of its use. Addvalue, the Addvalue Enabled logo, Wideye, the Wideye logo, iSavi and iSavi logo are either trademarks or registered trademarks of Addvalue Technologies Ltd and/or its affiliates in Singapore and/or other countries. Inmarsat and the Inmarsat logo are trademarks of The International Mobile Satellite Organisation and are licensed exclusively to Inmarsat. IsatHub and the IsatHub logo are trademarks of Inmarsat. Inmarsat, the Inmarsat logo, IsatHub and the IsatHub logo are used by Addvalue Innovation Pte Ltd under licence from Inmarsat.