

precision SOUND LAB

XLR SOCKET G EDITION ASSEMBLY INSTRUCTION

Thank you for choosing our upgraded XLR SOCKET for Technics SL-1200GAE/G.

This product is made using the best components available, chosen and manufactured for an unsurpassed quality.



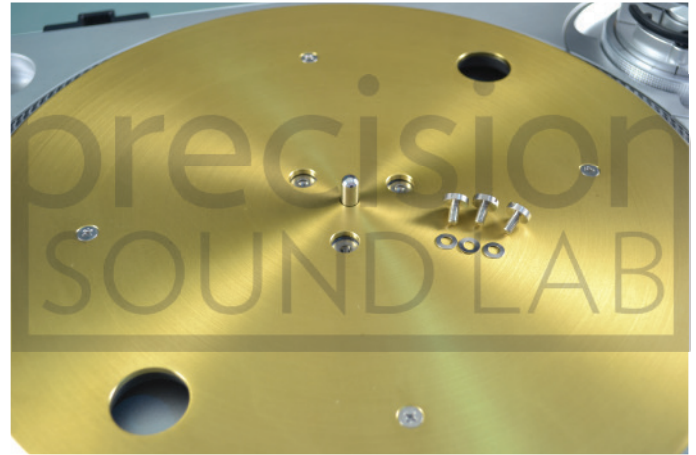
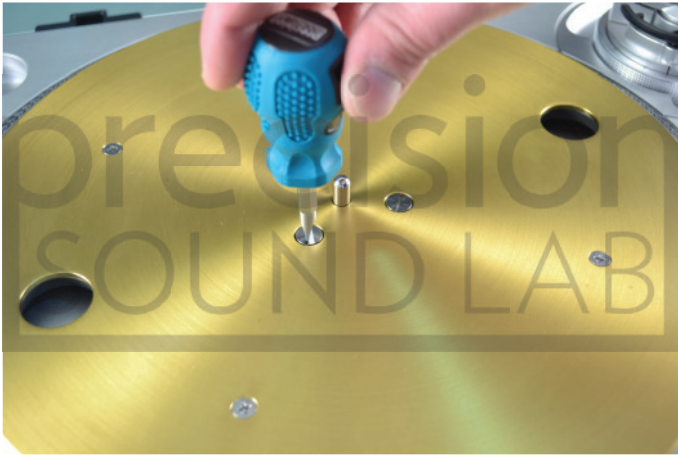
**DISCONNECT MAINS CABLE BEFORE WORKING
ON THE TURNTABLE- RISK OF ELECTRIC SHOCK**

PLEASE BE CAREFUL WITH INSTALLATION, EVEN IF WE PUT A LOT OF CARE IN THIS INSTRUCTION MANUAL WE ARE NOT RESPONSIBLE FOR DAMAGES INCURRED DUE TO IMPROPER INSTALLATION.

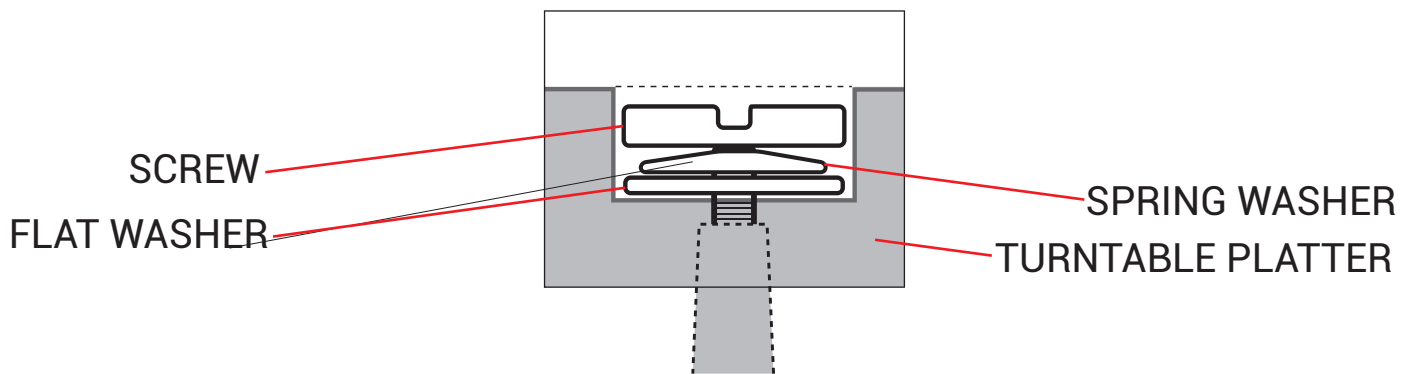
STEP 1 - REMOVING THE PLATTER

Remove counterweight from the tonearm, then remove rubber mat from the turntable, using the supplied screwdriver unscrew the 3 retaining screws from the platter.

Please note that under each screw there are two washers, a smaller spring one and a flat bigger one. Be careful not to loose it.



Please refer to the following image for washers placement reference



Carefully remove the turntable platter with two fingers and place it on a soft surface



STEP 2 - PLACING THE TURNTABLE

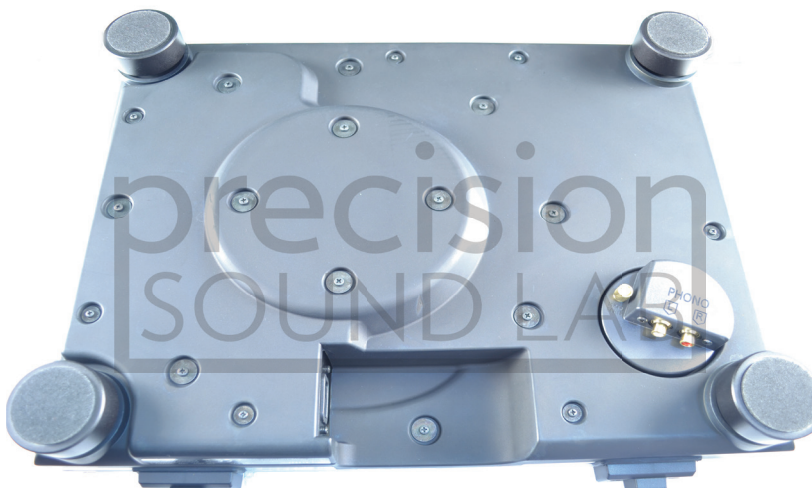
Using a soft cloth or original padding put upside down the turntable dustcover that will be used as a jig.

Put a soft cloth on the dust cover too, to avoid scratching the turntable.



Carefully place the turntable upside down on its cover

USE CAUTION AS THE TURNTABLE IS QUITE HEAVY IN weight



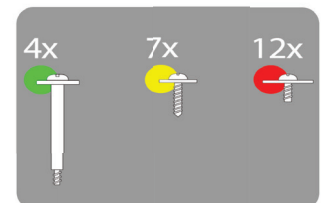
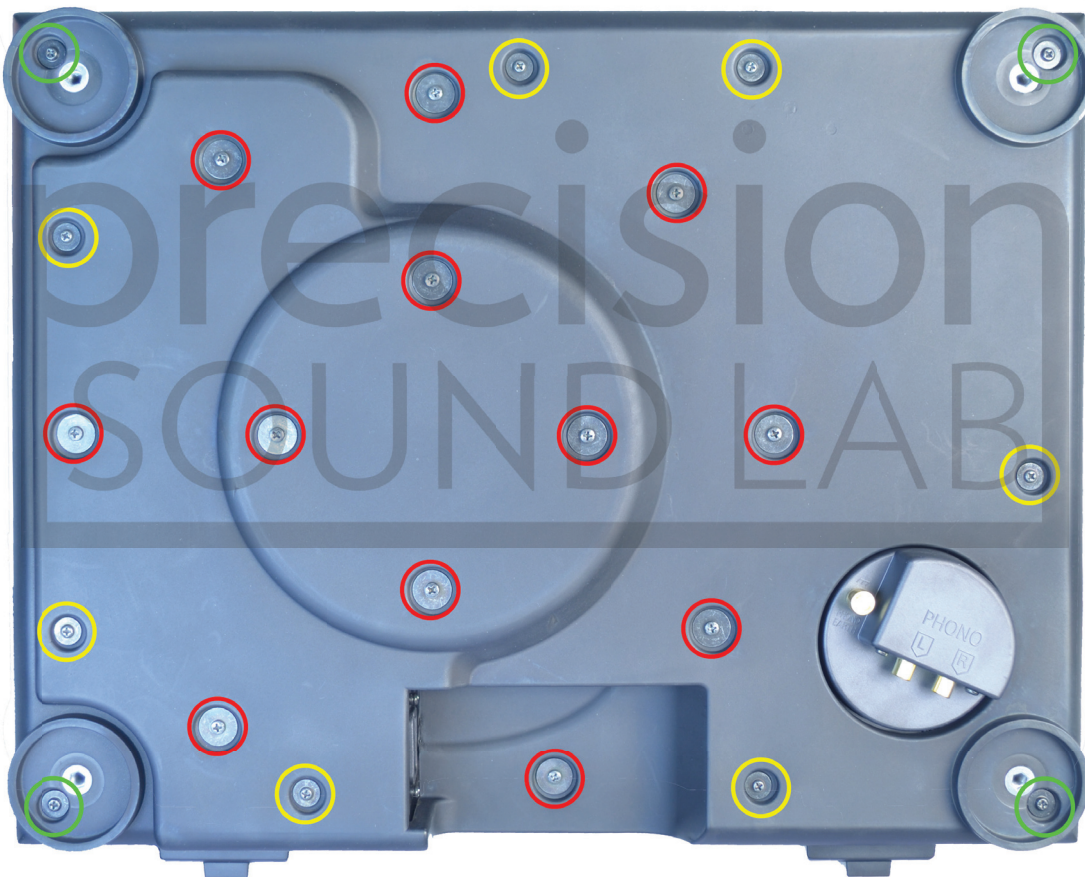
STEP 3 - REMOVING THE BOTTOM BASE

Unscrew the 4 feet then remove all the bottom base screws

There are 23x screws in total:

- 4x long screws
- 7x mid screw
- 12x short screw

Refer to the following table to identify the screw for reassembling.

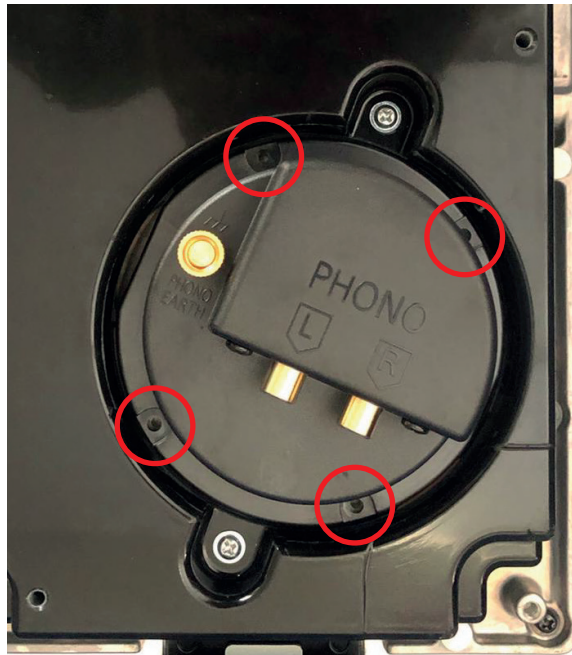


Tip: you can separate the 3 types of screw into different envelopes to help you for the reassembling process

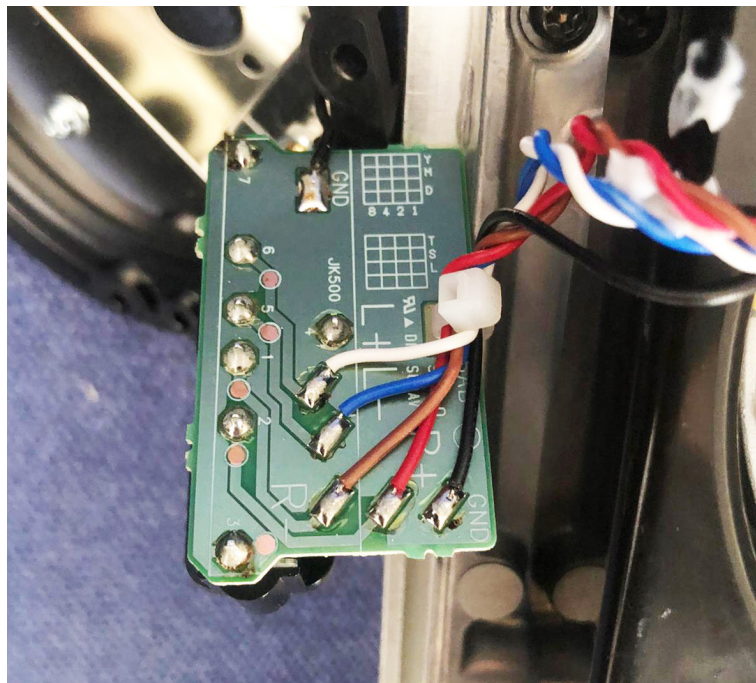
STEP 4 - REMOVING ORIGINAL RCA SOCKET

Remove the 4 screws of original RCA socket

Tip: put the RCA socket screws in a different envelope to help you in the reassembling process.



Now remove the socket so you can have access to the wires



Note: you can unscrew the 2 screws on the external portion of RCA socket to have better access to pcb and cables.

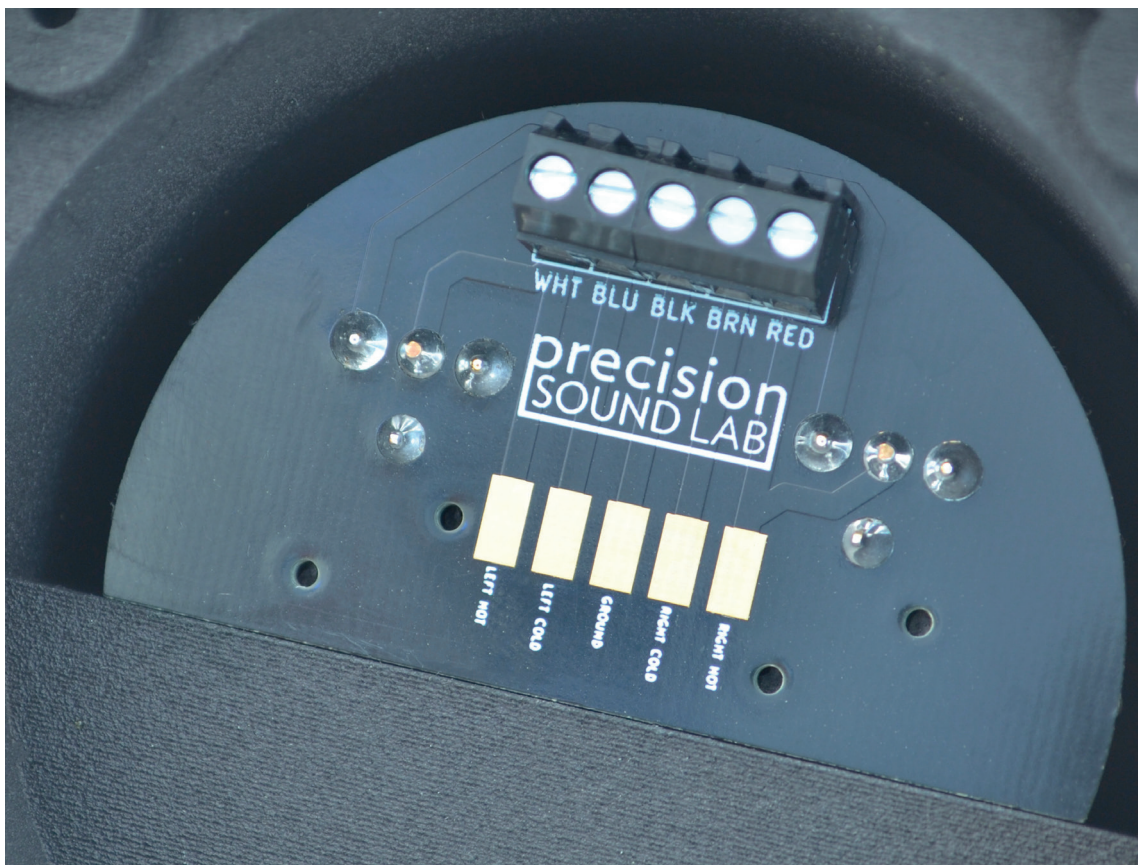
STEP 5 - INSTALLING XLR SOCKET

If you choose to install the XLR socket using its screw terminal barrel just cut the 5 original wires (White, Blue, Brown, Red and Black) as close to the original solder points, then use the supplied stripping tool to stripping about 4mm of insulation from the wires.

At this point refer to the XLR pcb printing to connect the wires to the correct terminal points.

If you choose to install the XLR socket using soldering just desolder the 5 original wires (White, Blue, Brown, Red and Black) and solder it to the 5 soldering pads on the XLR pcb.

Note the printed text under the terminal barrel for colors reference.



Once you have correctly installed the wires reassemble the XLR socket using the four original screws to the tonearm base, then reassemble the rubber bottom base. (Use picture on PAGE 4 for screw allocations)

Next reassemble the platter, please refer to the screw picture on PAGE 2 for correct washer mounting.

Enjoy your freshly XLR equipped Technics turntable.