

precision SOUND LAB

RCA sockets Mk7 kit - Fitting instructions Rev. 07/19

Thank you for choosing our RCA sockets kit, it is Designed and Made in Italy by Precision Sound Lab using the best technologies and materials for superior performance and durability.



Our kit is designed to fit all the Technics SL-1200/1210 from Mk2 to Mk6 models.
This kit is not suitable for SL-1200 GAE/G/Gr and Mk7 models.

Worldwide Registered Design by Precision Sound Lab



**WARNING! RISK OF ELECTRIC SHOCK
UNPLUG MAINS CABLE BEFORE STARTING
RCA SOCKET INSTALLATION**

Each kit contains:

- 1x aluminum RCA sockets box, with cover and 3x flat head M4 screws
- 1x stainless steel adaptor flange
- 2x button head M4 screws
- 1x 13cm interconnect phono cable
- 1x 120cm ground cable
- 1x black plastic cap
- 1x 3cm silver coated jumper
- 1x 2.5mm allen key
- 1x 30cm 4% silver soldering wire
- 1x 30cm desoldering braid

Step 1 - Preparing your working area

Disconnect the turntable from mains, lock the tonearm on its rest, remove tonearm counterweight then remove the platter using the 2 holes on it.

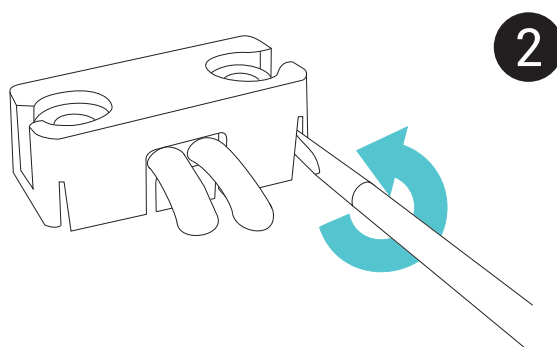
Please be careful with platter magnet on the lower side, we suggest to put the platter on a soft surface with the magnet facing upwards to avoid damages.

If you have original dustcover use it as a jig, placing it upside down on a soft cloth to prevent scratches, if the dustcover is missing use two objects with the same height to place the turntable upside down, the object (you can use 2 or more books e.g.) must touch just the cabinet, do not put tonearm in contact with it - see figure ①



Step 2 - Turntable base disassembling and cable removing /reinstalling

Unscrew the 4 turntable feet, remove all the rubber base screws then remove rubber base. Locate the cable holder on the bottom of tonearm base, unscrew the two Phillips screws then using a small flat screwdriver open the original cable clamp and remove it - see figure ②

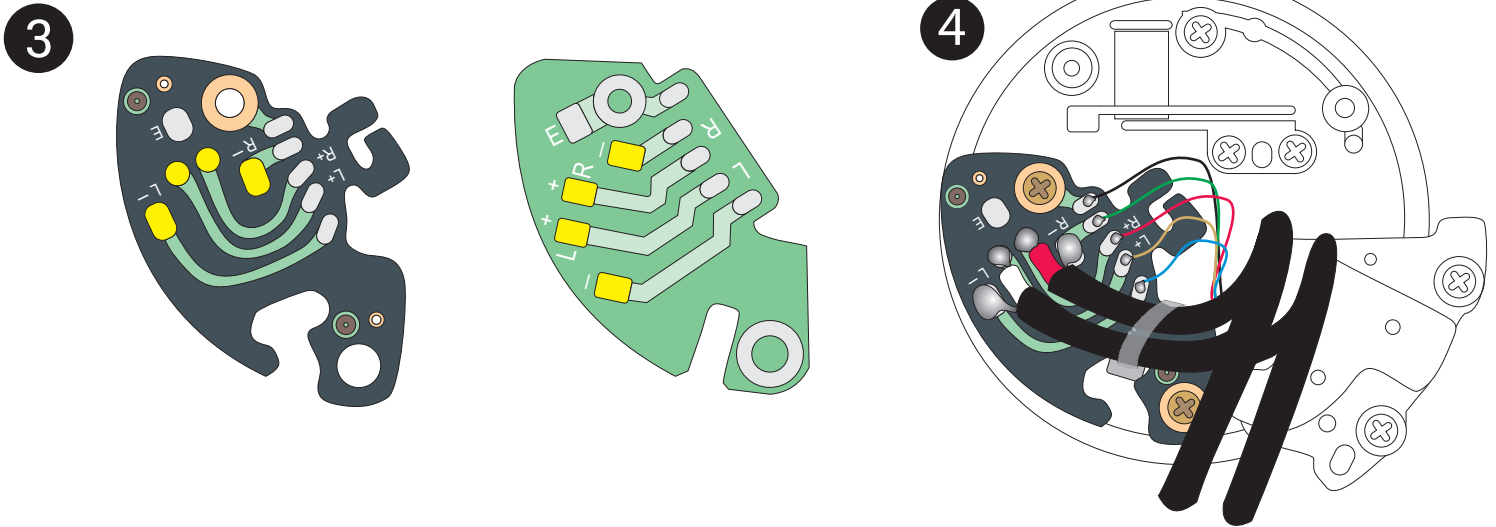


Remove the original metal flange at the bottom of tonearm base and keep the two small Phillips screws that will be used to mount the modified flange.

Once removed the original flange you have access to the interconnect PCB for the tonearm wires.

Cut the original cable tie and desolder the original phono cables, use the supplied desoldering braid to clean the welding pads (marked in yellow), basically you can find two style of interconnect PCB, use figure ③ for reference.

Solder the new cable with the supplied soldering wire and install the supplied plastic cable tie as in figure ④.



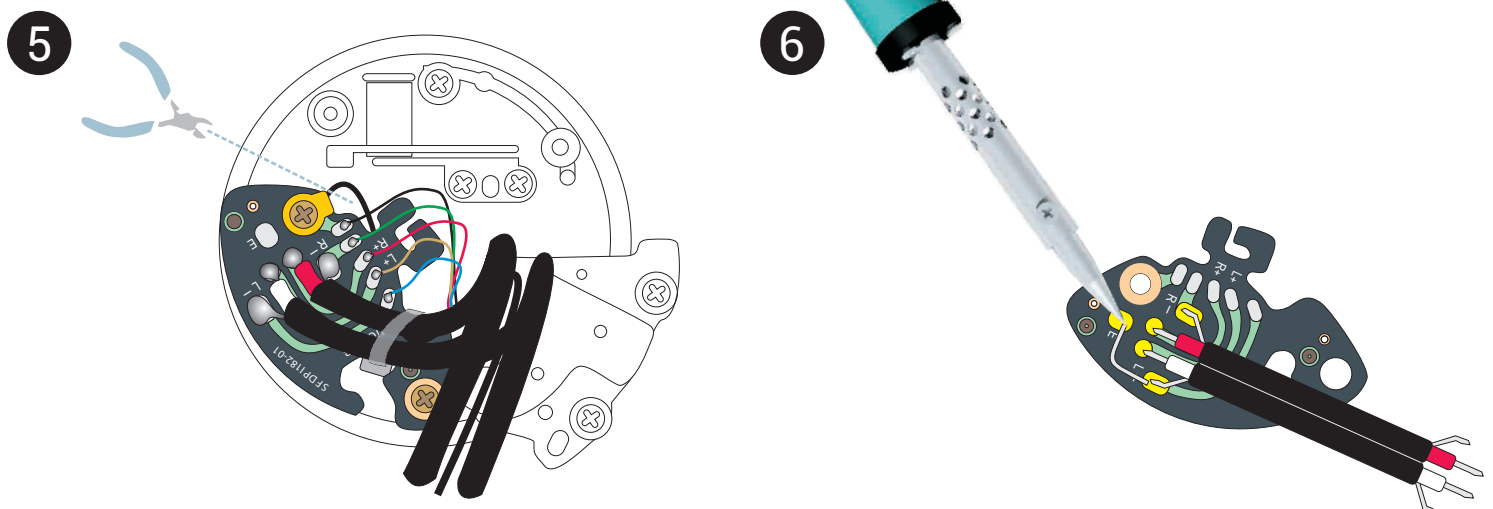
NOTE: put cable tie knot on the side as in figure ④ to allow the complete movement of tonearm base height regulation (VTA).

Letting the knot facing upwards could not allow regulation of VTA to reach the lowest position.

Ground removing mod: if you want to remove original grounding cable follow these instructions, the ground will be routed through one of the channel screen wire.

If you prefer to keep external ground just leave 5cm of original cable soldered to the tag.

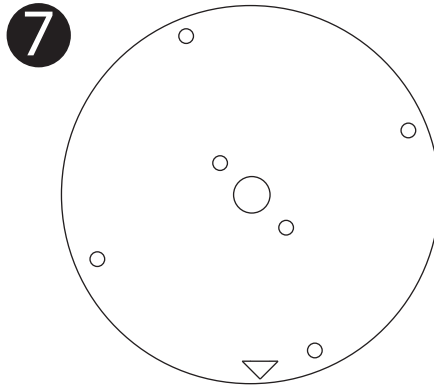
Cut the external grounding cable from the solder tag as shown in figure ⑤ then bend and solder the supplied silver wire jumper as shown in figure ⑥



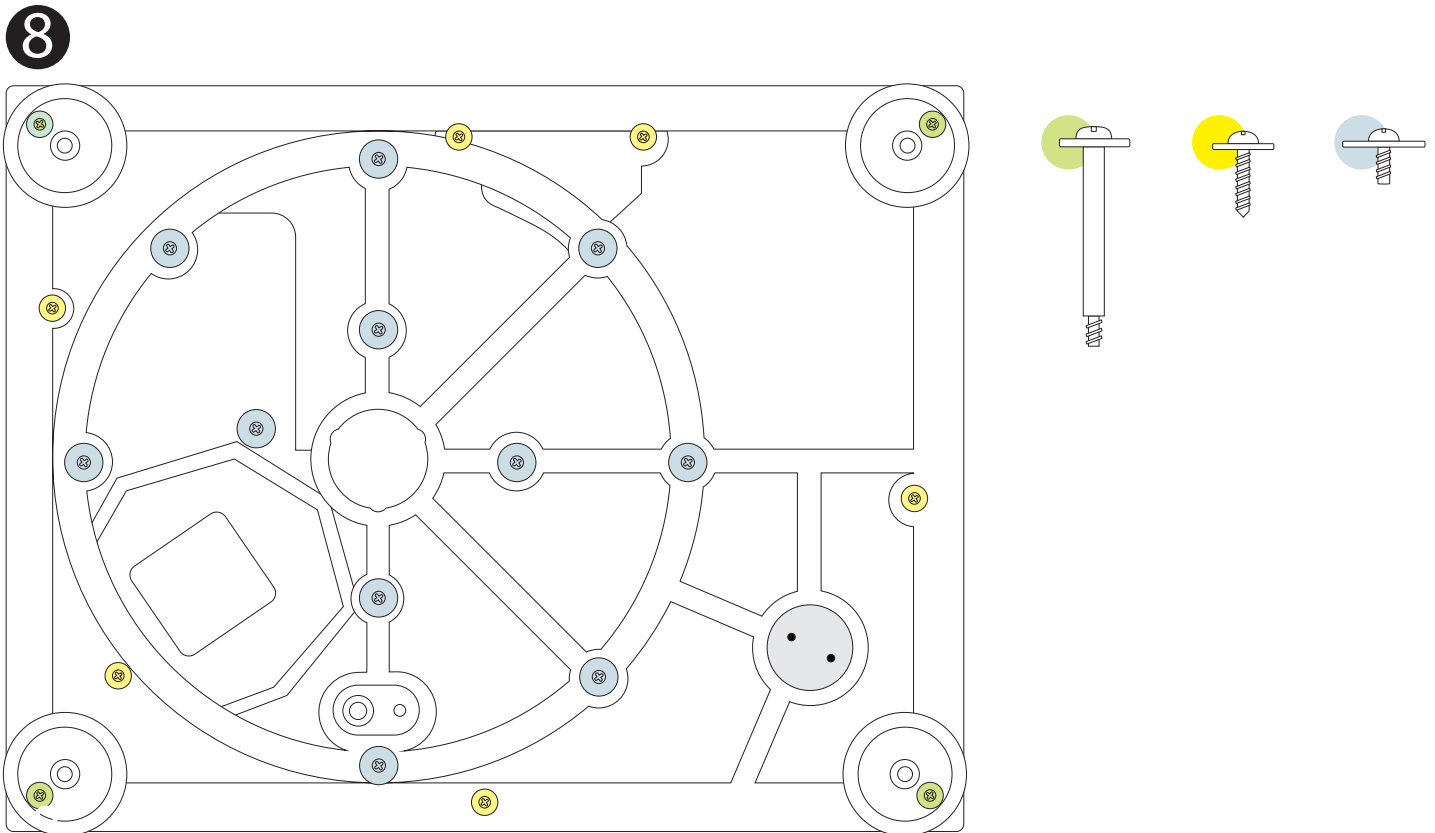
Step 3 - Turntable base reassembling

Install the new flange passing the phono wires through the flange central hole then assemble it using the 2 original small screws.

You have to install the flange with the shiny brushed side facing upwards, the correct position angle is marked by an arrow that have to point to the dustcover hinge, as in figure 7 .



Reassemble the rubber base, use fig. 8 as reference for screws positions



TIP : Reassembling the screws do half a turn anticlockwise before screwing it back, in this way you can insert the screw to the original threading.

Disassemble RCA box cover using the supplied allen key, fit the box in the rubber base hole letting the wires passing through the central hole.

Assemble RCA box using the two button head M4 screw and the allen key to the corresponding threaded holes on the flange.

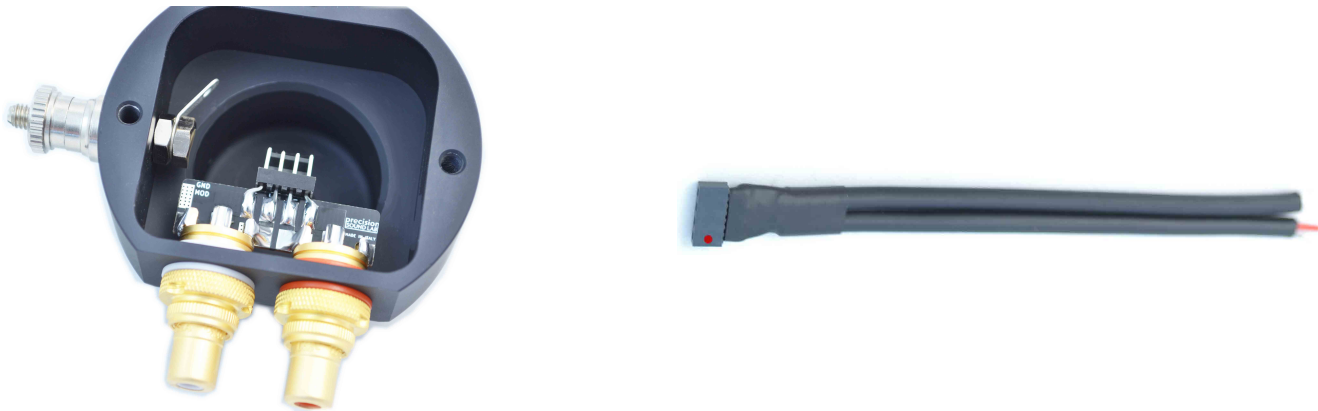
To facilitate the assembling we suggest to insert the first screw only half the way down, then insert the second screw and tighten both.

Proceed to solder the wires to the RCA sockets using the supplied soldering wire. Cables are stripped and pre-tinned on pcb side to help soldering.

PLEASE note: if you use a separated prephono (especially tube driven ones) in most case you must have separate external ground.

Tonearm signal layout is very simple, it has 2 channel -one per side- the cable have HOT (central) and SCREEN (external screening).

Relatively to the connection on the RCA sockets you will find a quick lock connector that avoid the tricky soldering on RCA plugs. The connector is marked with a red point to identify the RIGHT side, by the way once the cable is mounted accordingly to the instructions it will be automatically in the correct position.



Please note: in some case (on the decks until circa 1997) the tonearm wires are held in place with a strip of fabric tape, as the wires are very very thin. Take care not to pull away the tonearm cable from their soldering pads. Double check these thin wires, in case re-strip it and solder in place.

If you choose to use the external grounding cable shorten the original black cable that is used for external ground keeping about 10cm (4 inches) strip it and solder it to the corresponding soldering tag located on the ground post, in addition you could disassemble the ground post and plug the hole with the supplied black plastic cap.

Reassemble the box cover using the flat head M4 screws, reassemble the four feet and the turntable platter, connect the turntable to your audio gear and enjoy your music!

