

precision SOUND LAB

EPS-01MK2 G EDITION ASSEMBLY INSTRUCTION

Thank you for choosing our upgraded power supply for Technics SL-1200GAE/G/GR. This product is made using the best components, available, matched for an unsurpassed quality.

Ultrafast rectifiers provide to feed the turntable with constant DC voltage with very low ripple and a dramatic improvement in audio performance.

Generously oversized toroidal transformer (mounted in the external case), Panasonic FC audio grade capacitors, 1% tolerance metal film resistors and selected and matched components with tight tolerances make it one of the best external power supplies that allow the 1200 to express its huge potential.

Completely discrete design, no IC's.

NO SOLDERING REQUIRED! Just use the supplied screwdriver.



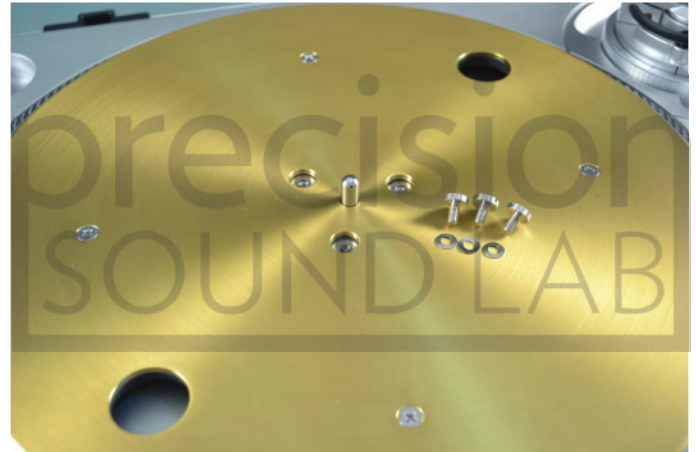
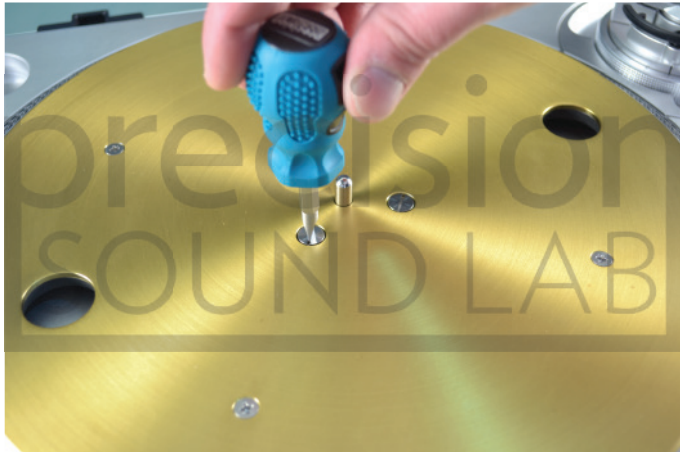
**DISCONNECT MAINS CABLE BEFORE WORKING
ON THE TURNTABLE- RISK OF ELECTRIC SHOCK**

PLEASE BE CAREFUL WITH INSTALLATION, EVEN IF WE PUT A LOT OF CARE IN THIS INSTRUCTION MANUAL WE ARE NO RESPONSIBLE FOR DAMAGES OCCURRING DUE A WRONG INSTALLATION.

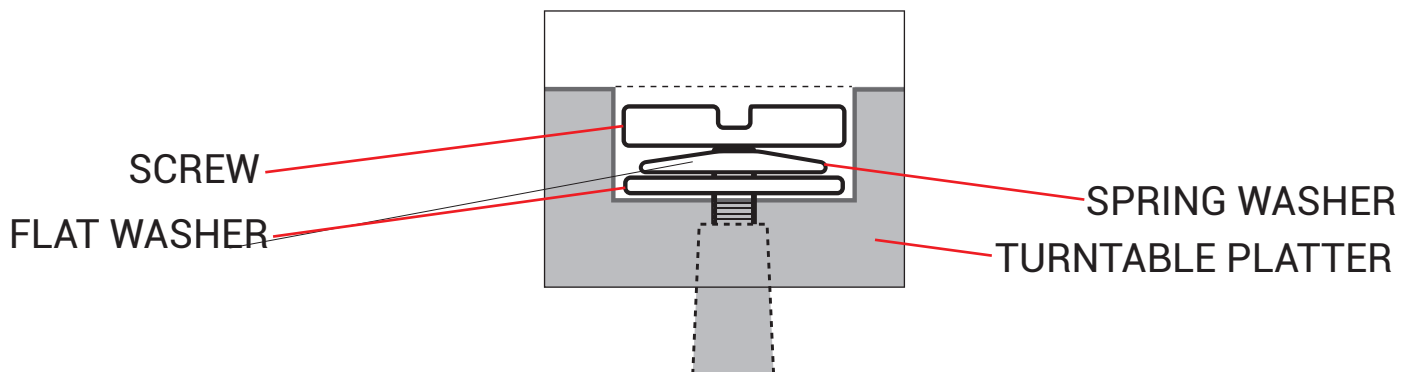
STEP 1 - REMOVING THE PLATTER

Remove counterweight from the tonearm, then remove rubber mat from the turntable using the supplied screwdriver unscrew the 3 retaining screws from the platter.

Please note that under each screw there are two washers, a smaller spring one and a flat bigger one. Be careful not to loose it.



Please refer to the following image for washers placement reference



Carefully remove the turntable platter with two fingers and place it on a soft surface



STEP 2 - PLACING THE TURNTABLE

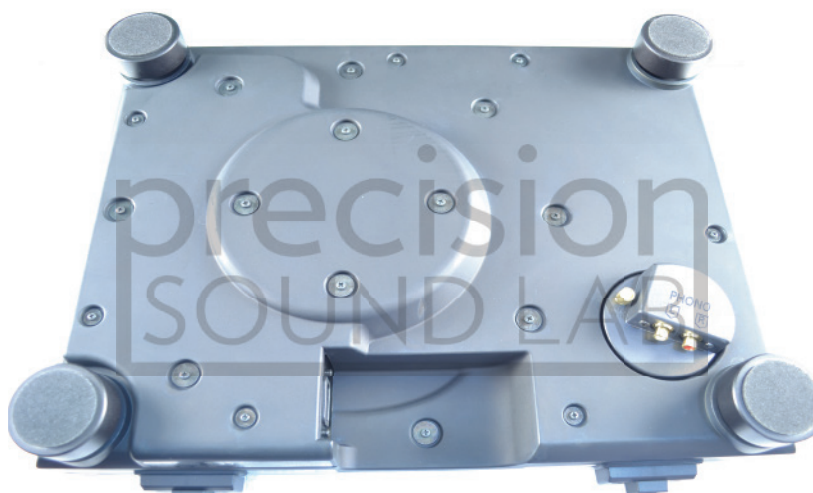
Using a soft cloth or original padding put upside down the turntable dustcover that will be used as a jig.

Put a soft cloth on the dustcover too, to avoid scratching the turntable



Carefully place the turntable upside down on its cover

Take care as the turntable is quite heavyweight



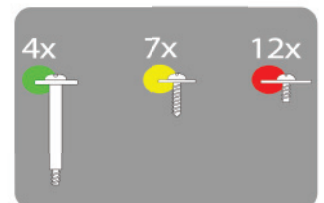
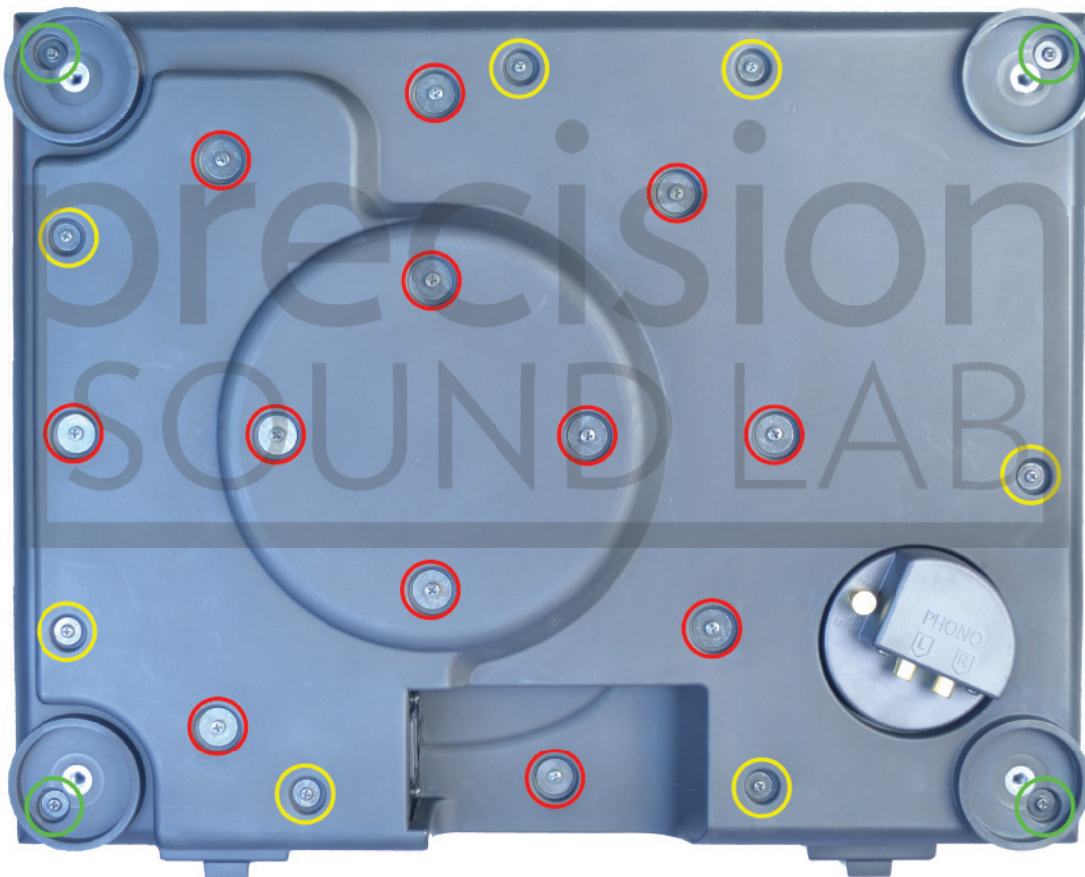
STEP 3 - REMOVING THE BOTTOM BASE

Unscrew the 4 feet then remove all the bottom base screws

There are 23x screws in total:

- 4x long screws
- 7x mid screw
- 12x short screw

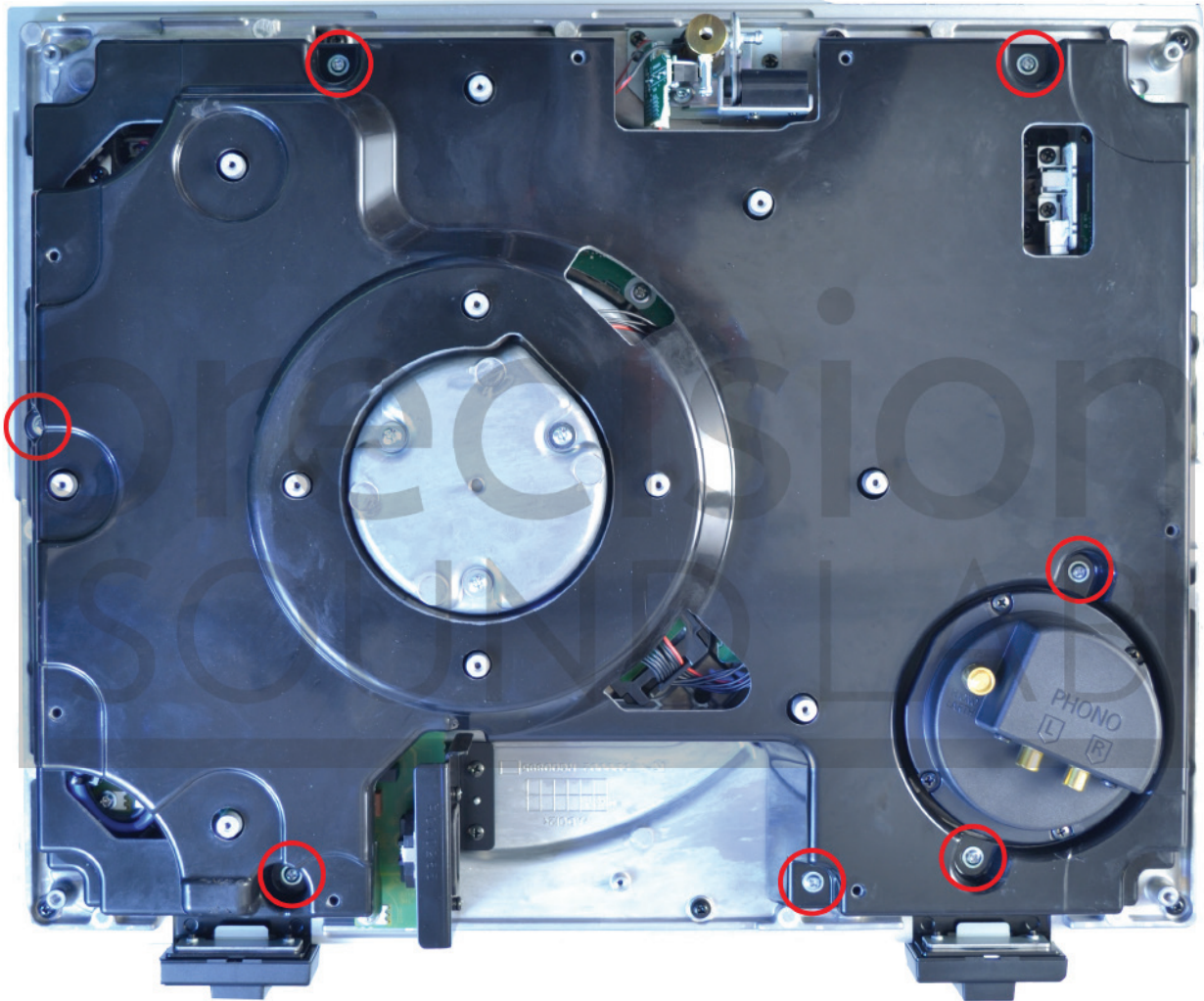
Refer to the following table to identify the screw for reassembling.



Tip: you can separate the 3 types of screw into different envelopes to help you in reassembling process

STEP 4 - REMOVING THE INTERNAL BASE

Remove the 7 screws of internal base
Refer to the following table to identify the screw for reassembling.



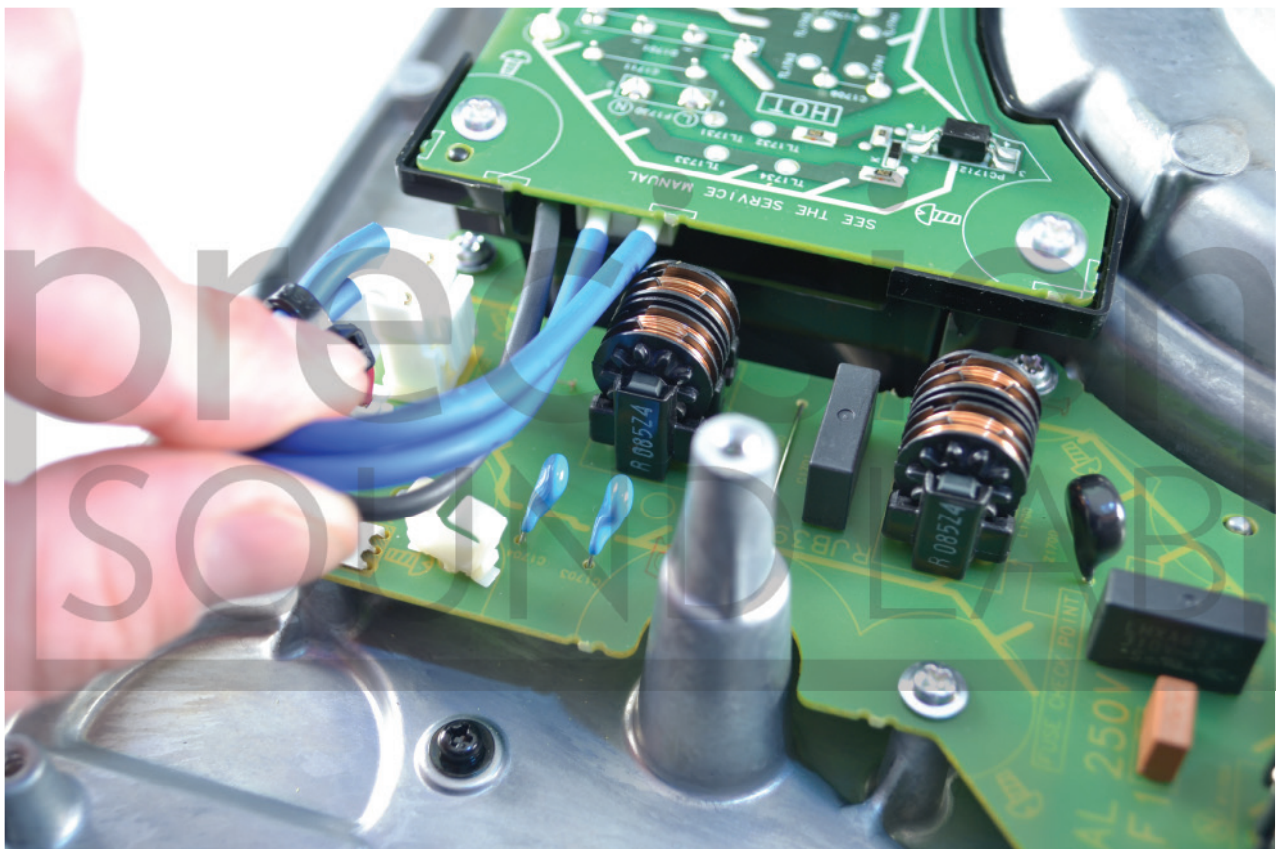
Tip: put the internal base screw in a different envelope to help you in reassembling process.

Now remove internal base so you can have access to the electronics

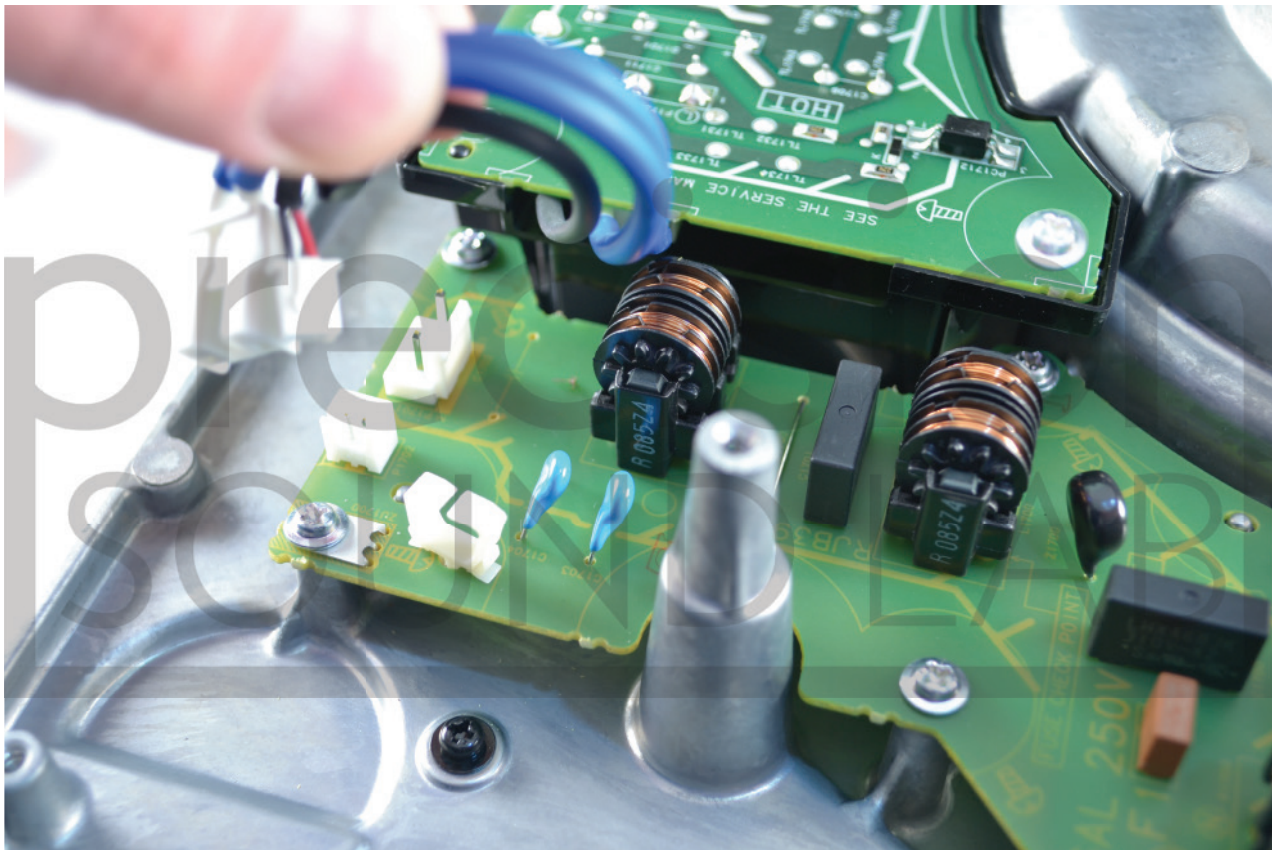
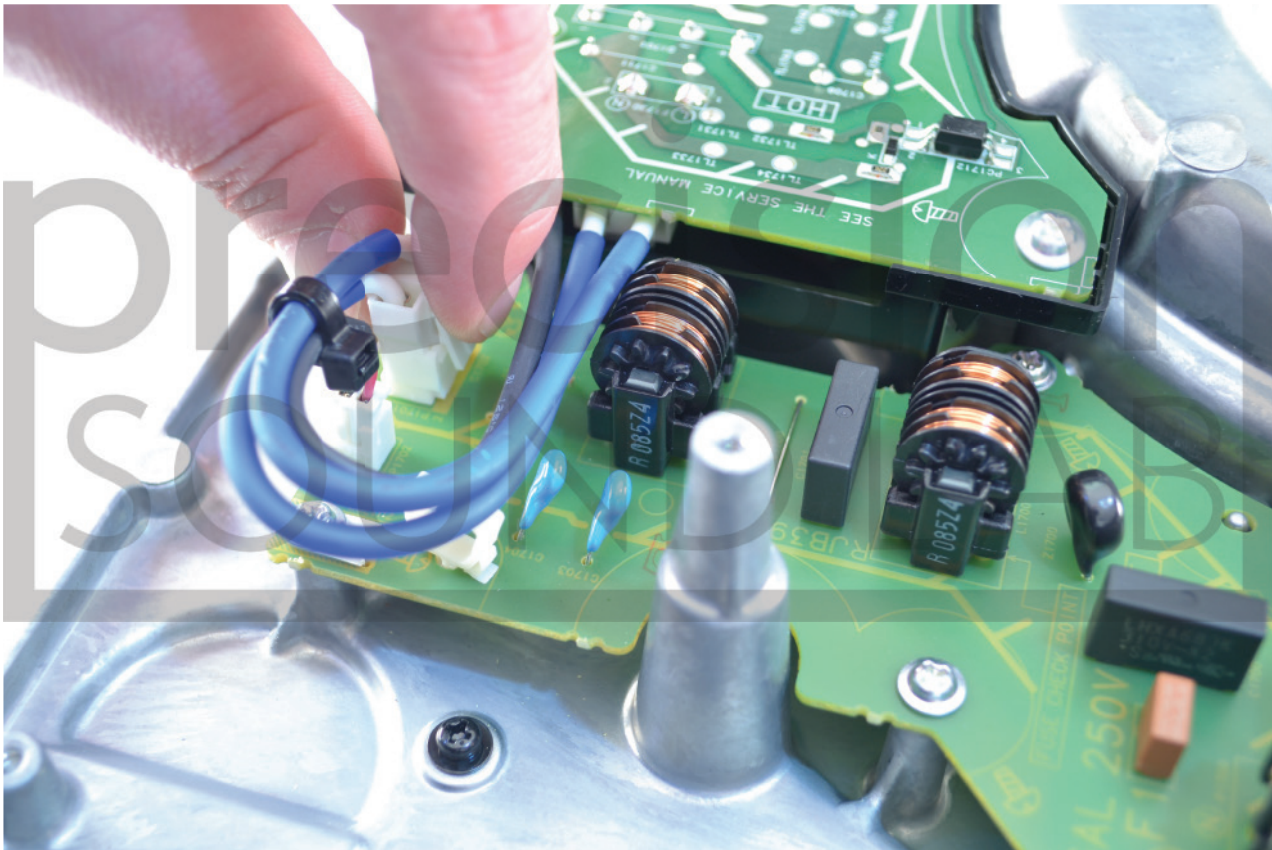


STEP 5 - REMOVING ORIGINAL PSU

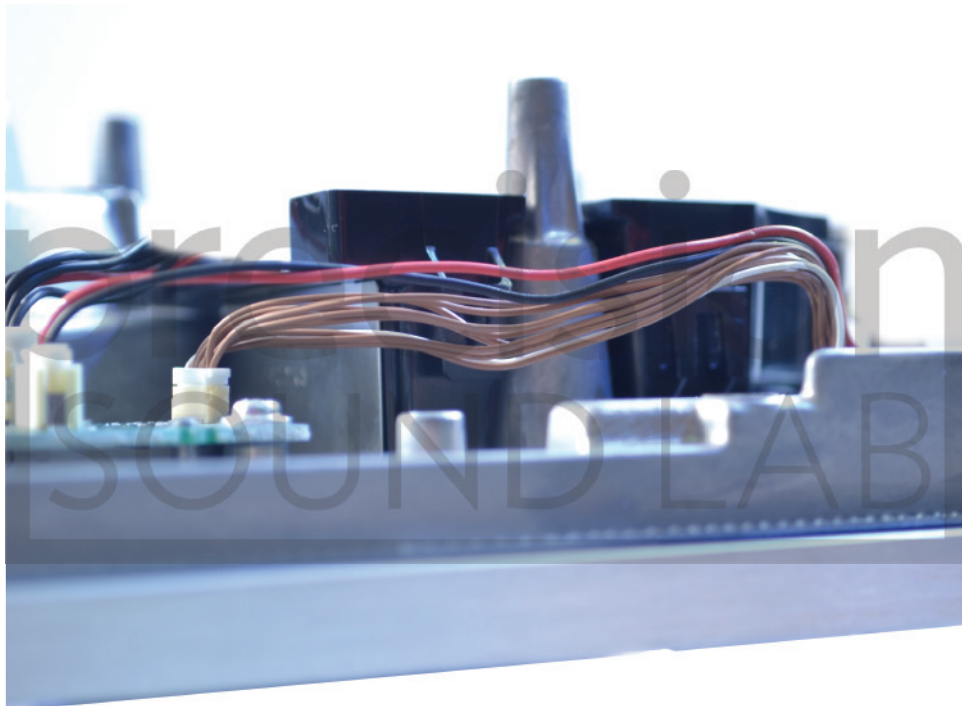
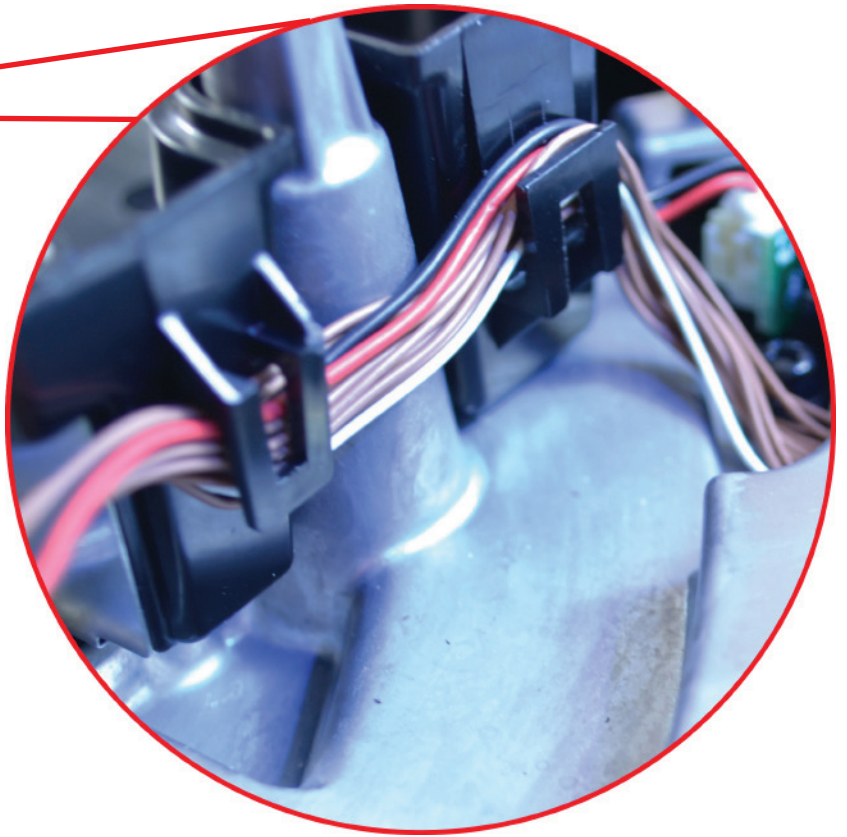
Unhook the two blue cables and the black one from the cable tie



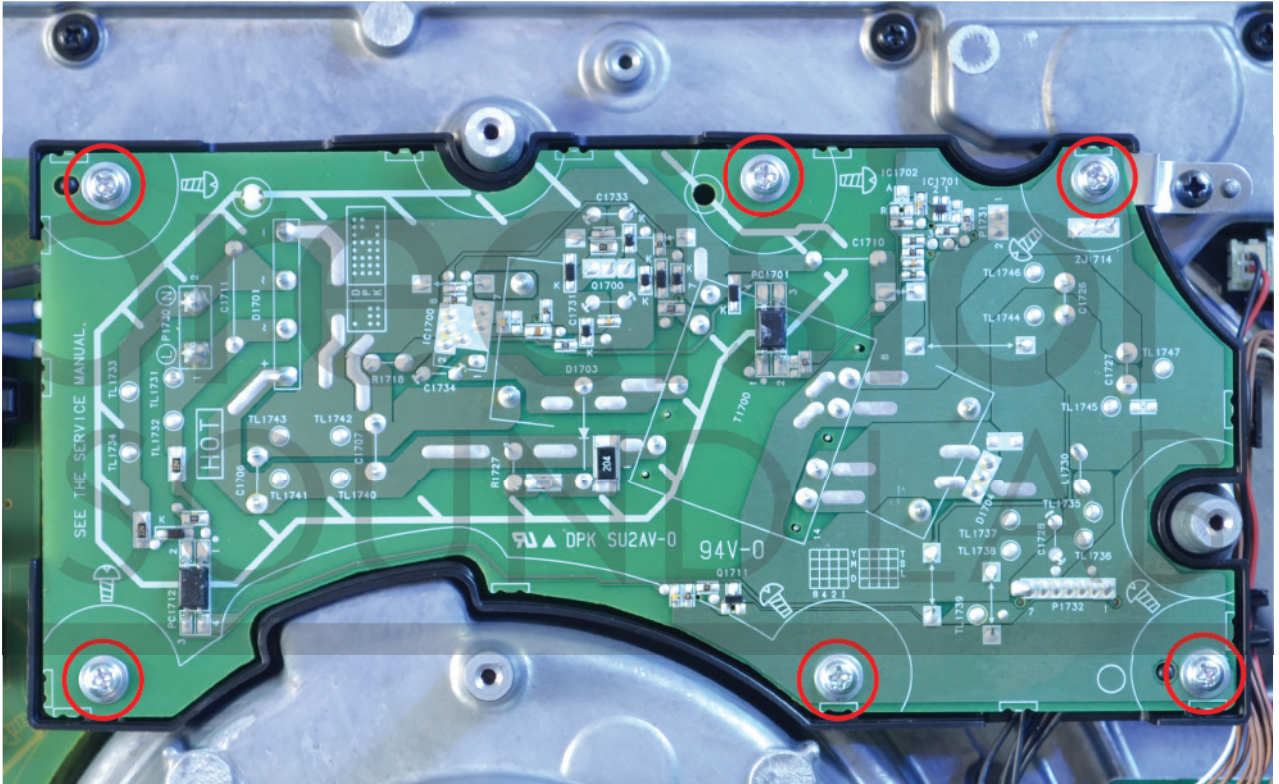
Unfasten the two connectors from pcb



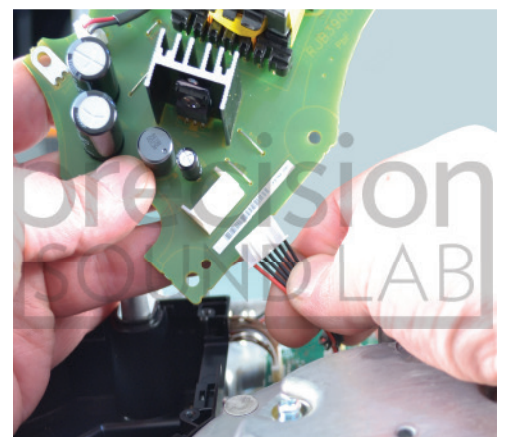
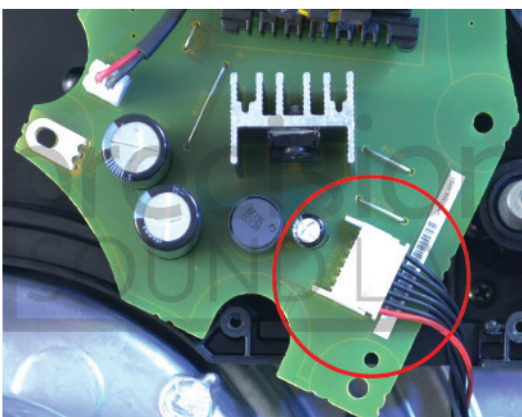
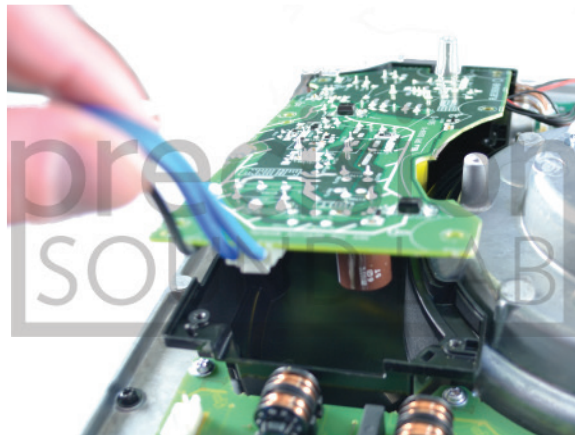
Unhook the cables from pcb holder



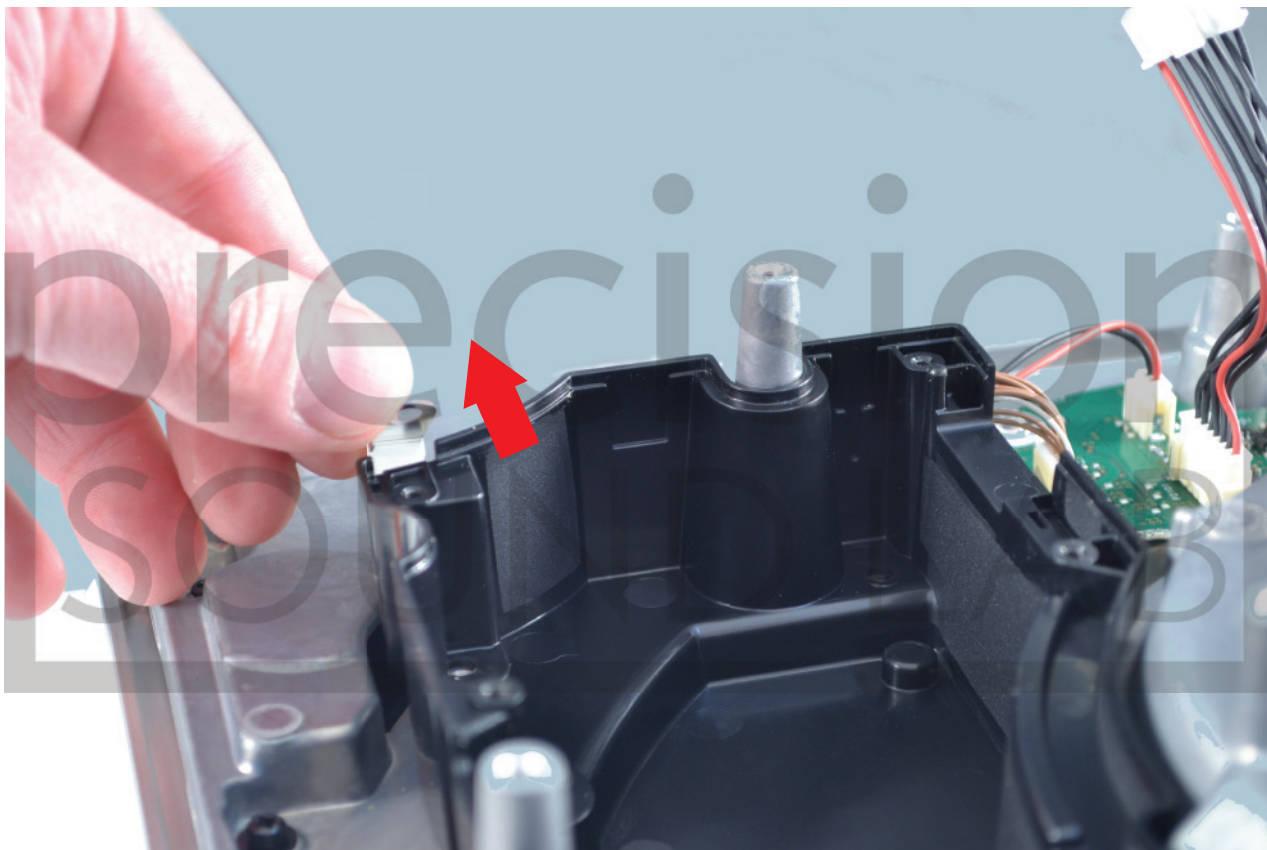
Remove the 6 screws of internal base
These screws will be used to mount the new PSU pcb



Turn upside down the pcb and disconnect the 7 pin connector, the connector have a locking tab, just press it and pull to release



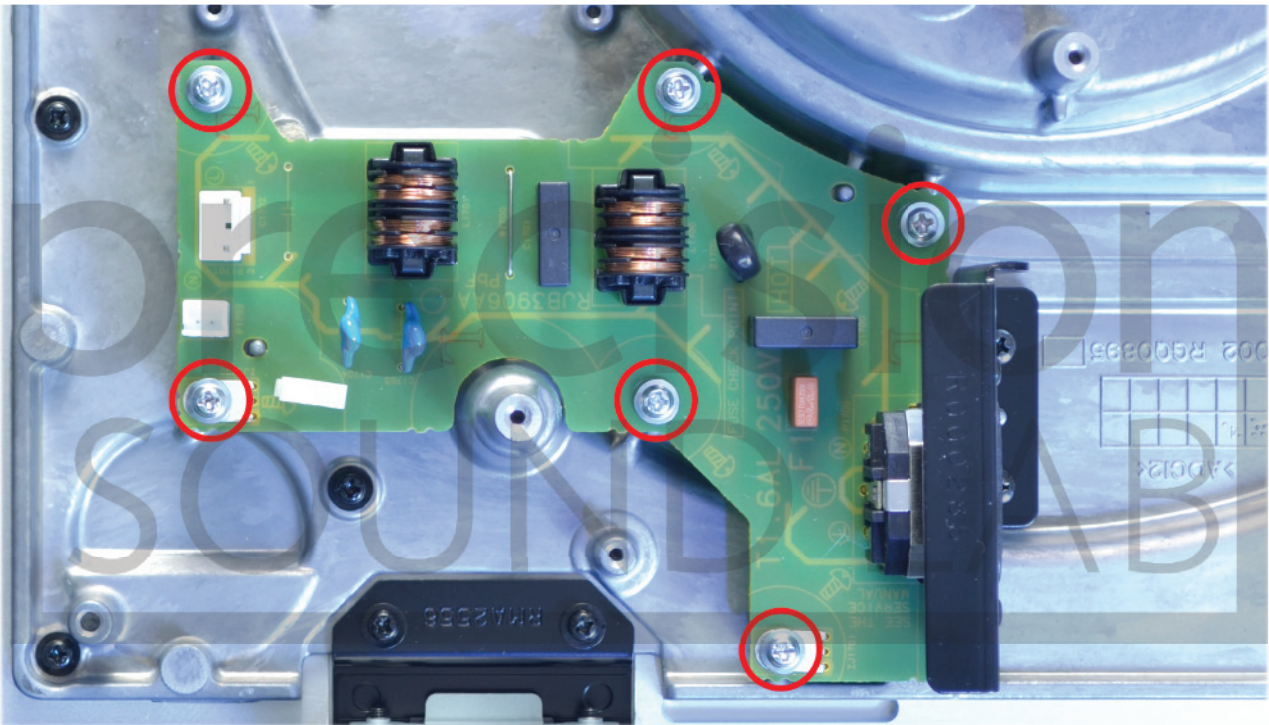
Gently pry up the ground tag from holder corner



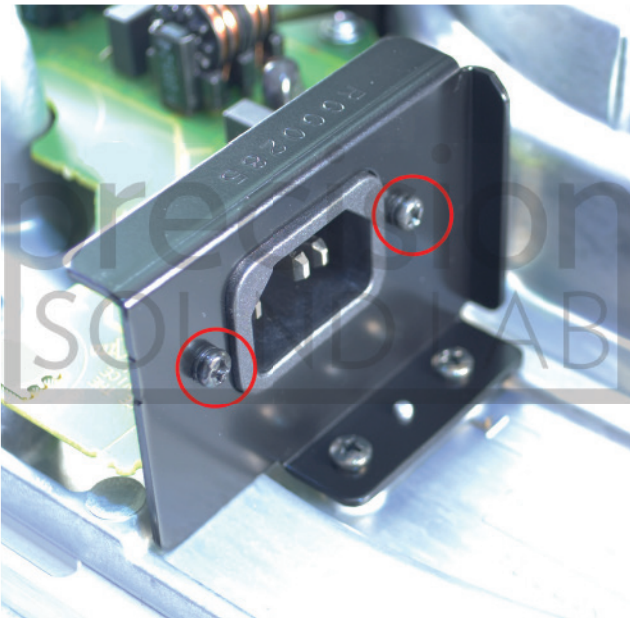
Remove the 4 screws from pcb holder then remove the plastic holder



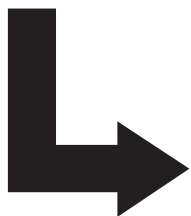
Remove the 6 screws from pcb AC IN.
Keep one screw that you will need to fix the cable tie



Remove the two IEC inlet screws,
these will be used to mount the
new connector



Then remove AC IN pcb

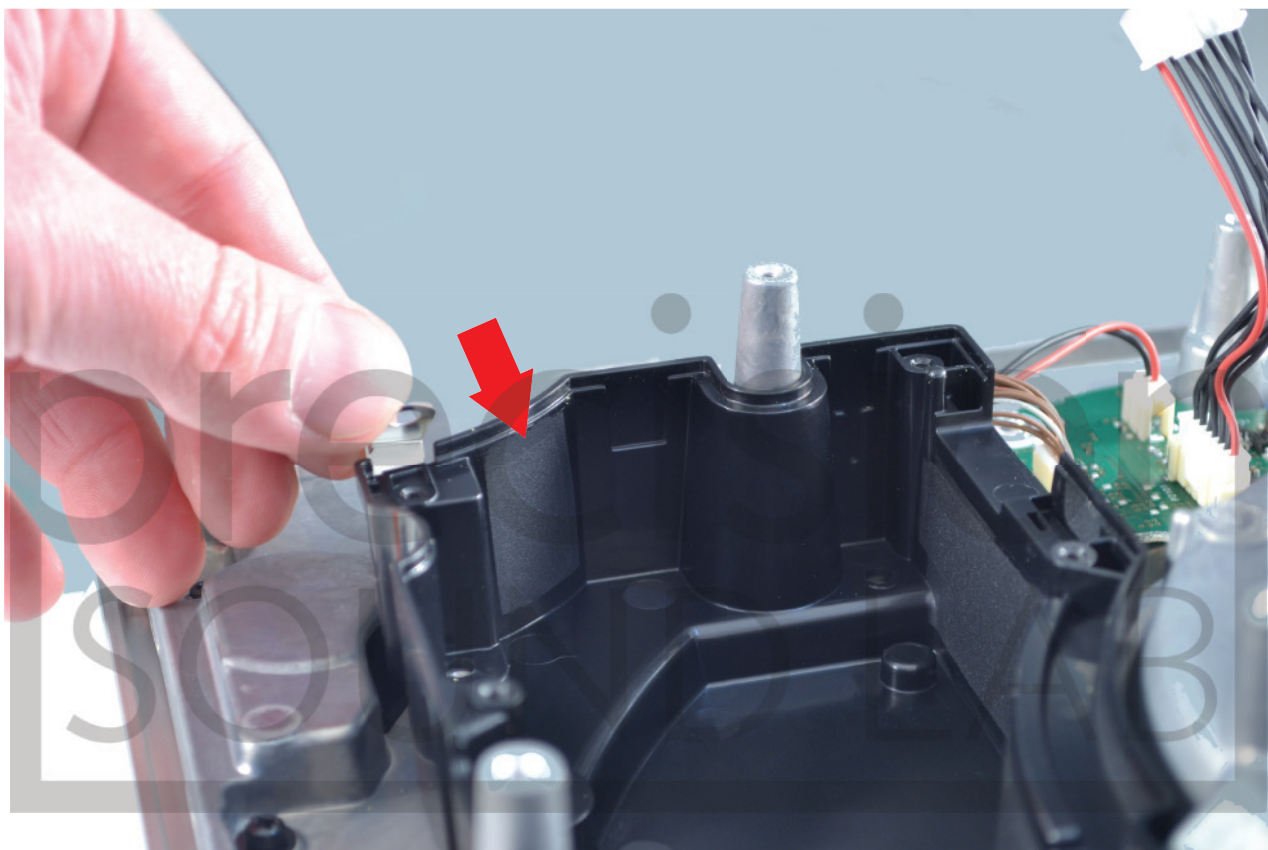


STEP 6 - INSTALLING THE NEW PSU PCB

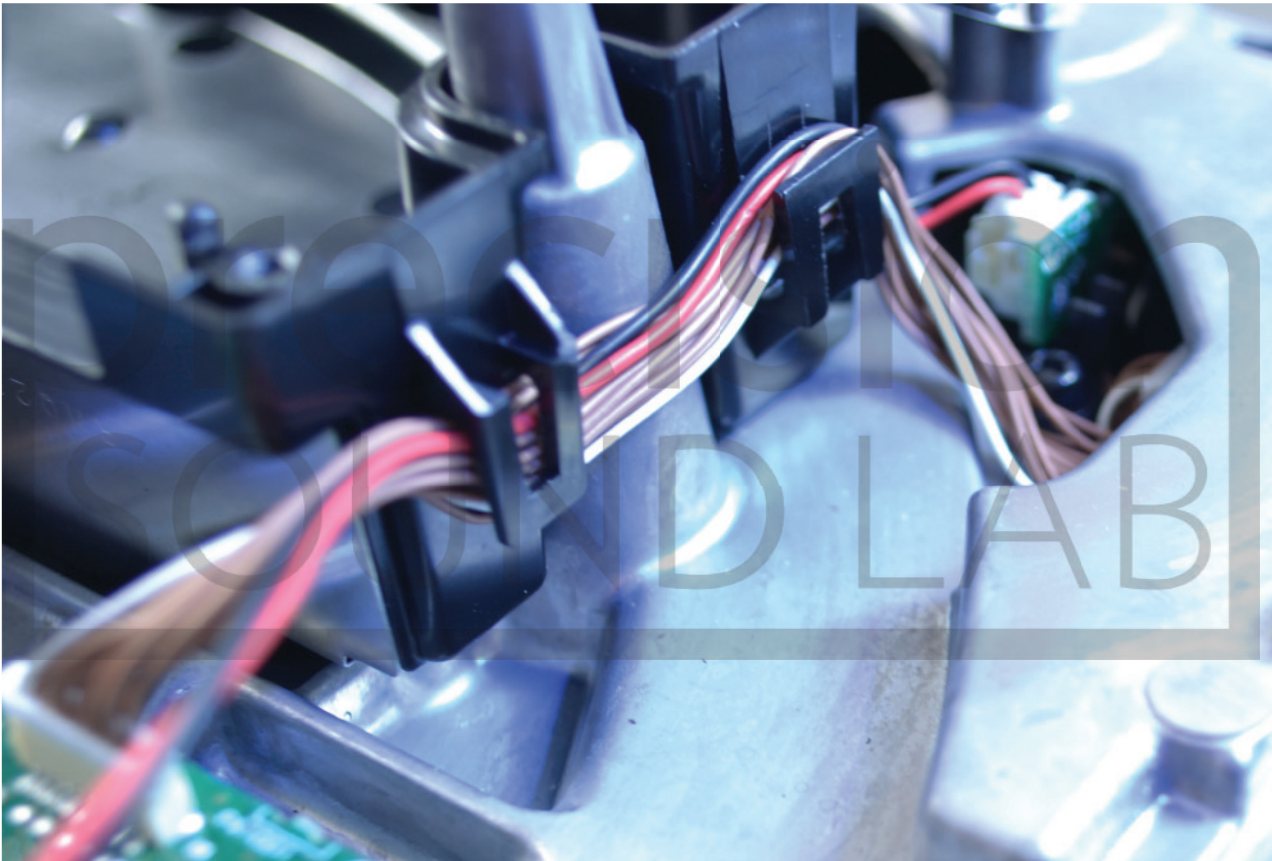
Reinstall the pcb holder with its 4 screws (black ones)



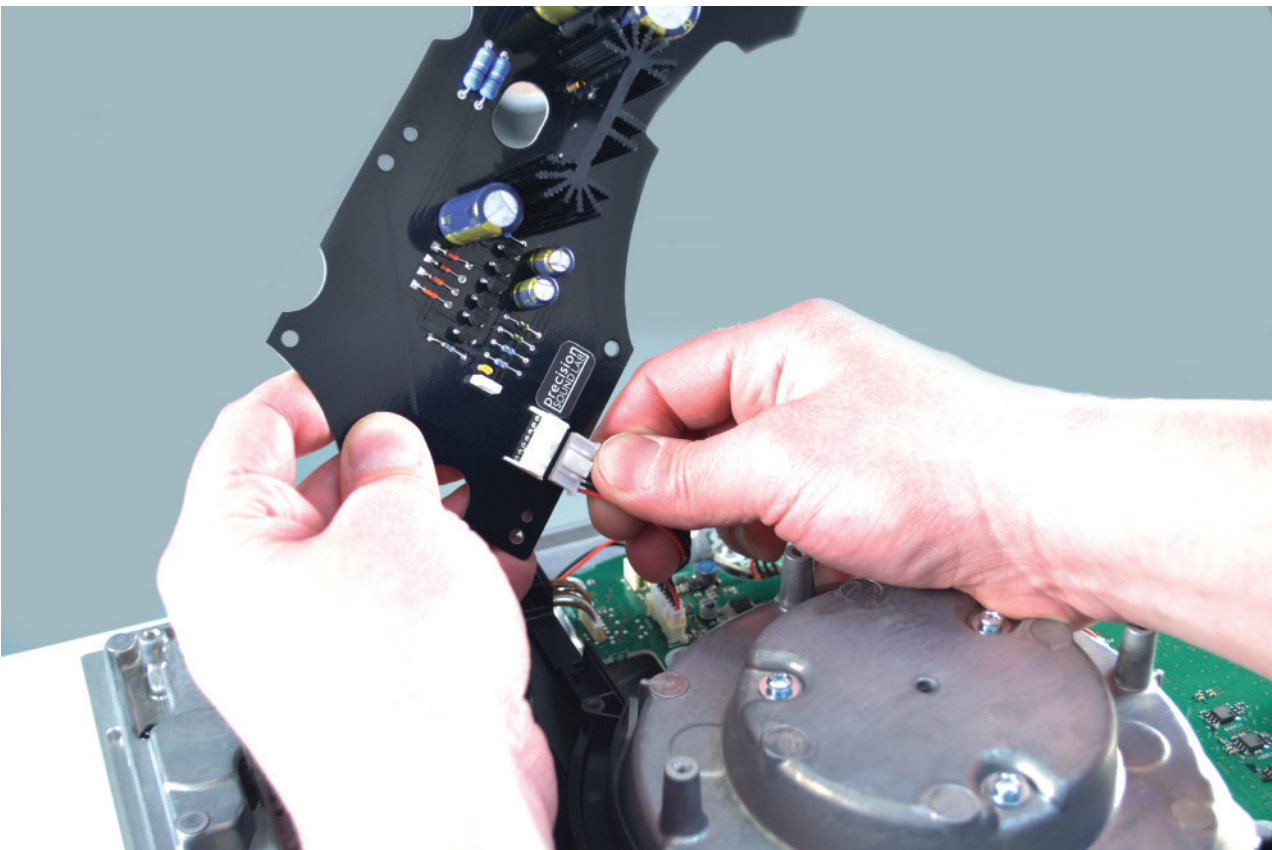
Gently pry down ground tag on its place



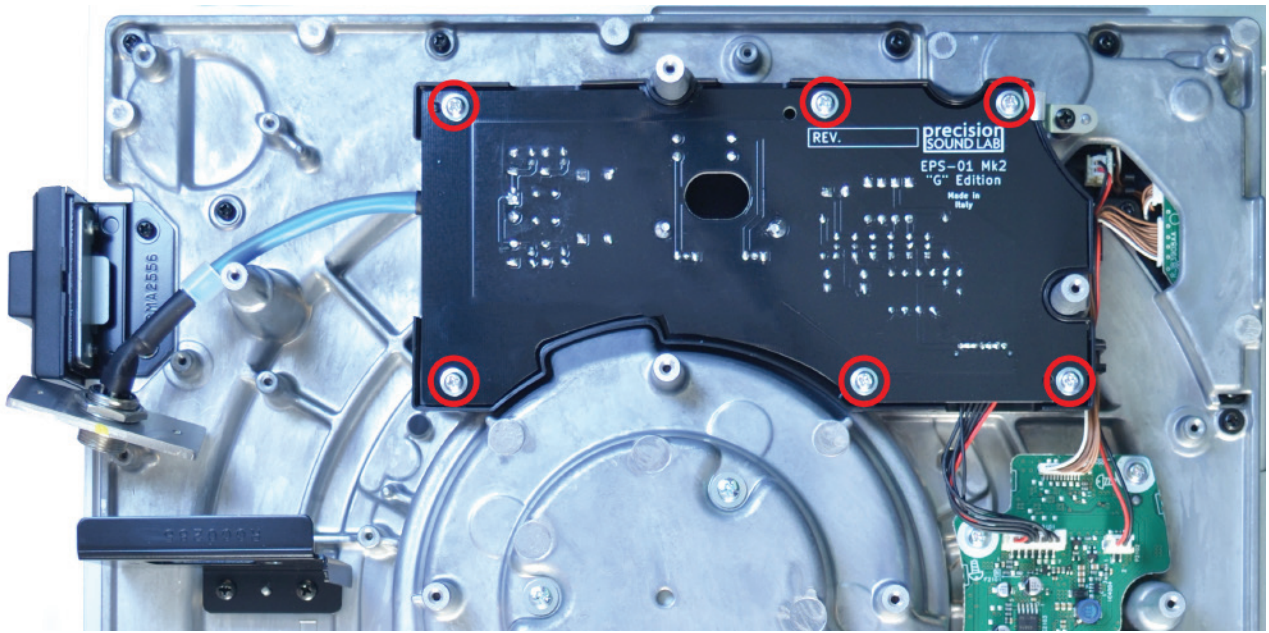
Reinstall cable looms on the two hooks on the holder



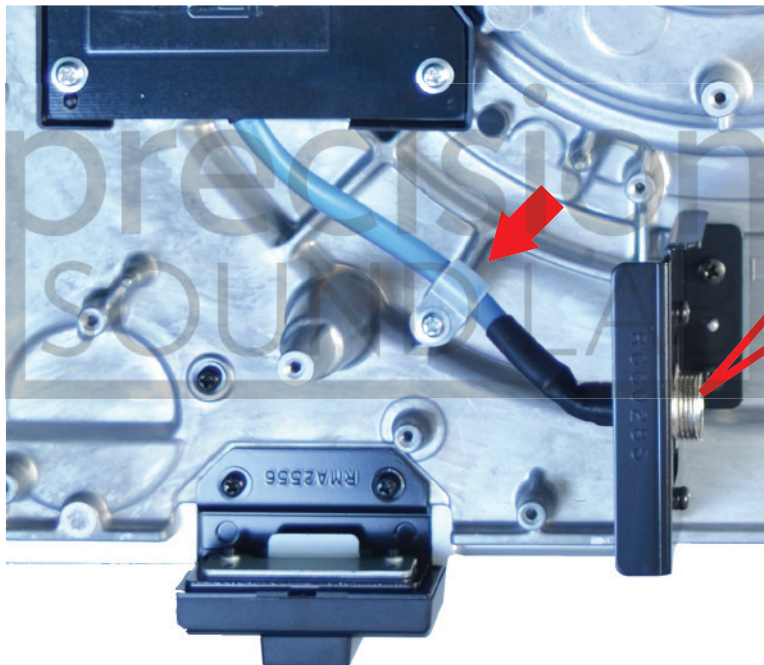
Connect the new PSU pcb to the original 7 pin cable connector



Assemble the new PSU pcb to the holder with 6 original screws



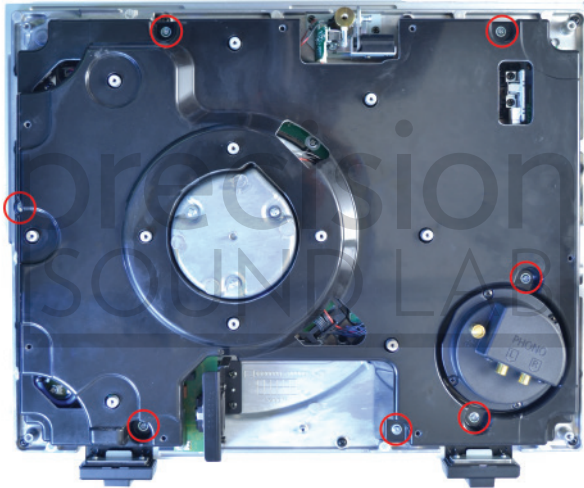
Install the new connector to the IEC plate using the 2 original screws
The yellow dot indicate correct orientation and must be visible



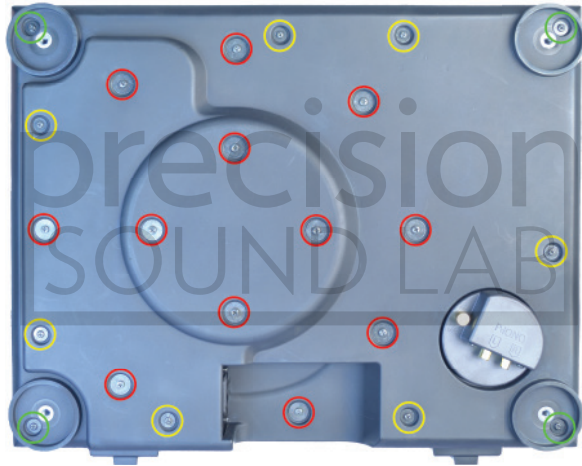
Using the supplied cable tie fix the cable as in the picture

STEP 7 - REASSEMBLING THE TURNTABLE

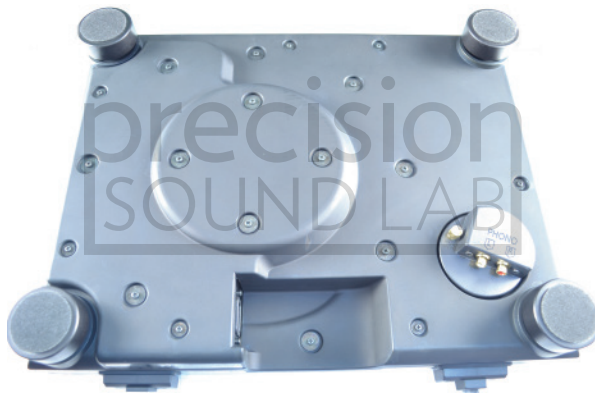
Reassemble internal base with its 7 screws
(see chart on page 5)



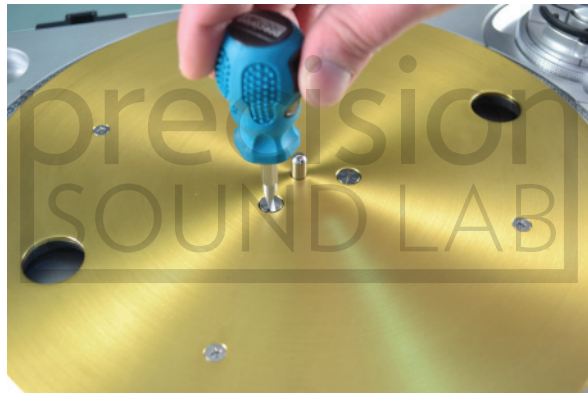
Reassemble bottom with its 23 screws
(see chart on page 4)



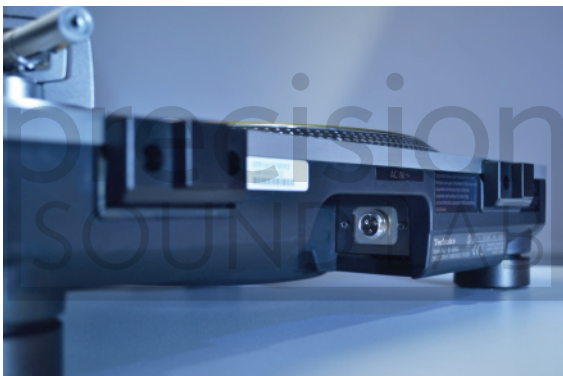
Reassemble the feet



Reassemble the platter
(see notice on Page 2)



Connect the supplied power cable from turntable to external unit



Done.