

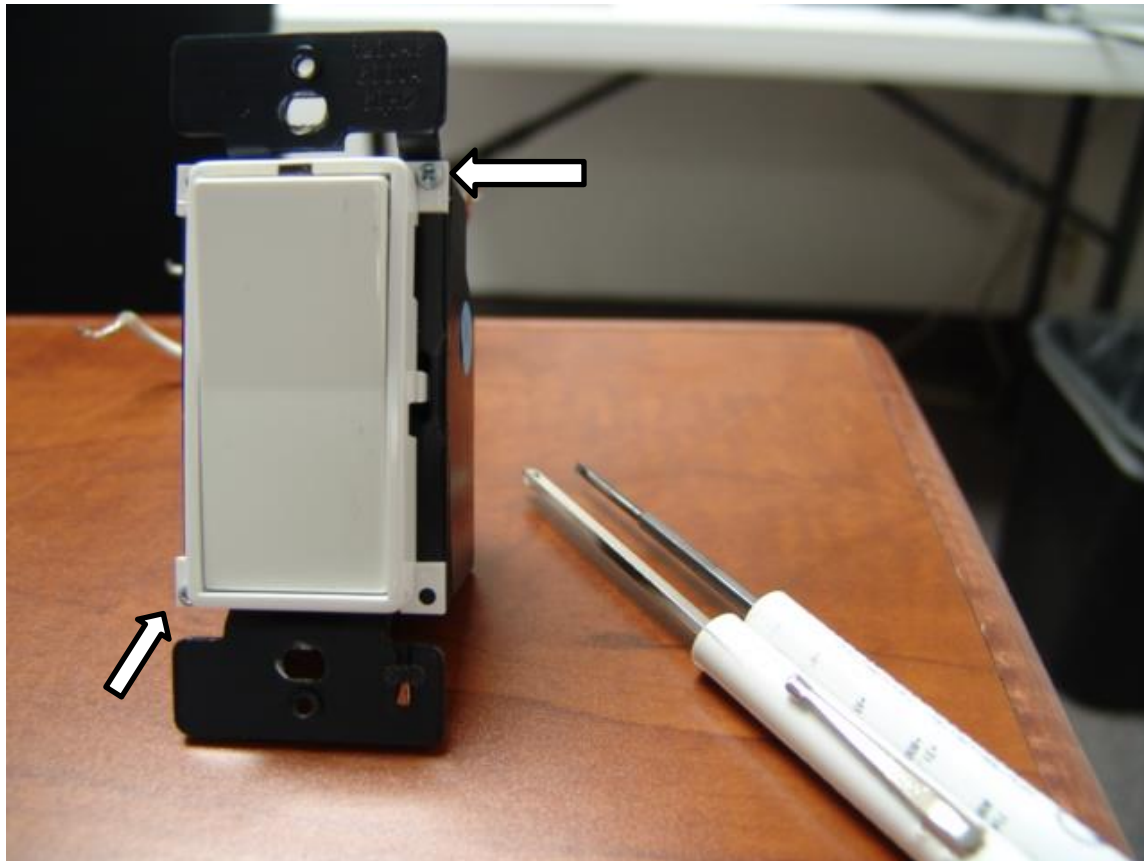
How to change plastic-set on wall switch (WS1D-6, WS1D-10, WS1R, WSR)

***We are not responsible for any damage during the process.

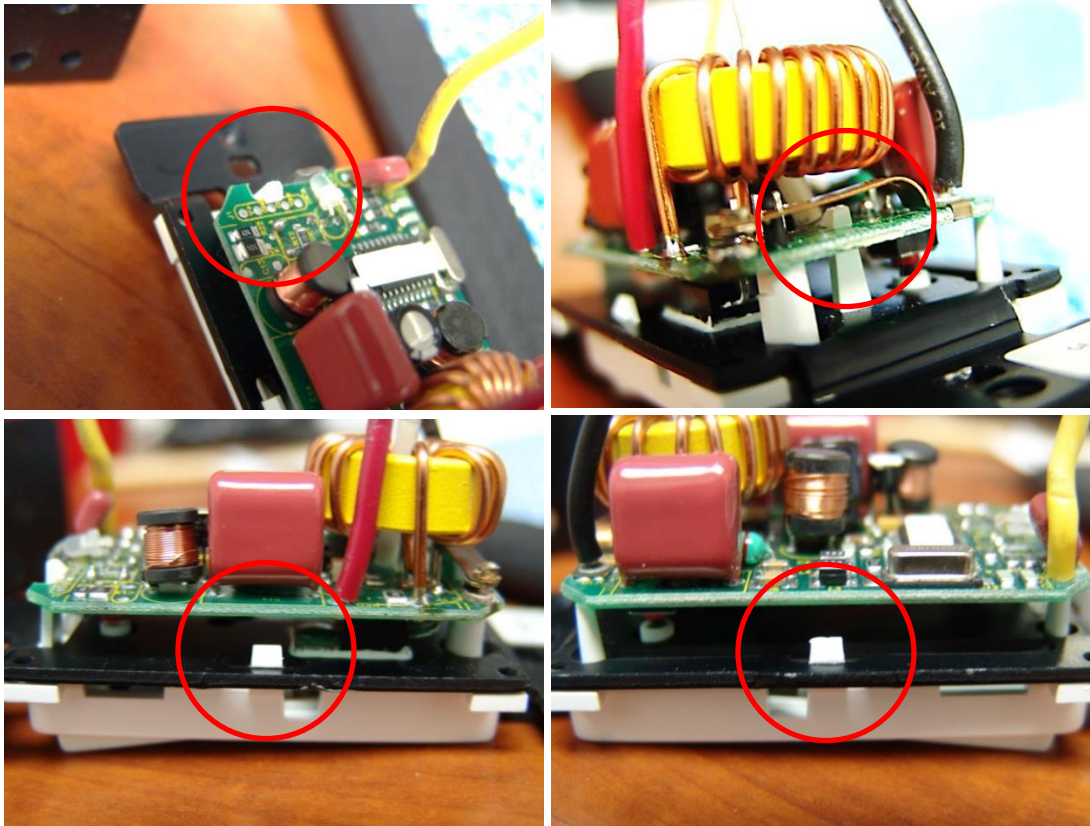
Tools needed: small phillip screw-driver, small flat-head screw driver

Detaching the plastic-set

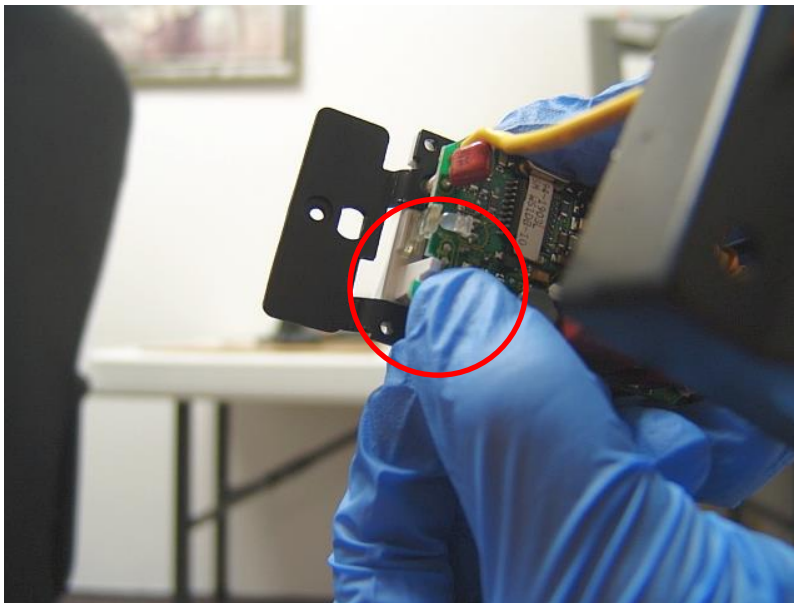
1. Lock the bottom rocker (System Off – WSIDs only). This is to secure the metal clip beneath the rocker. Unscrew the 2 phillip screws on the switch, then carefully detach the black cover.



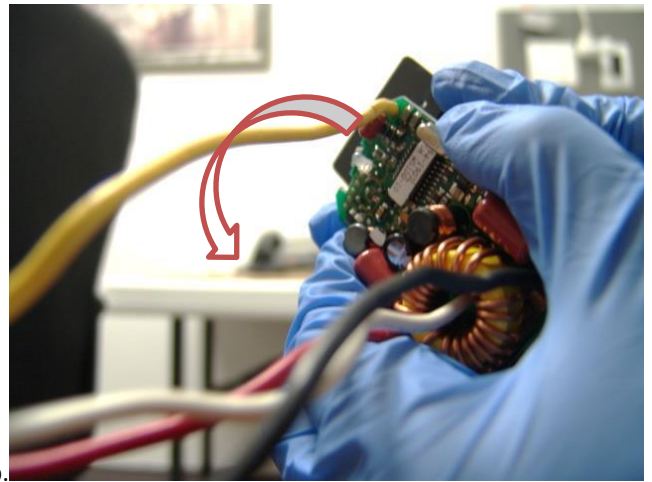
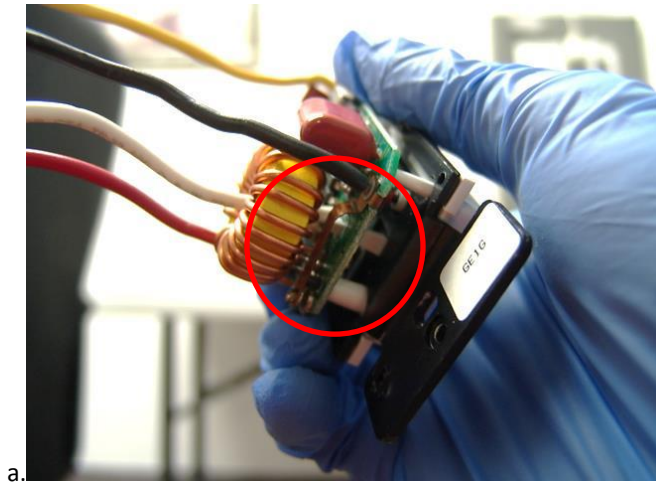
2. The plastic-set is attached to 4 places: 2 tabs locked to the circuit board (top and bottom) and 2 side tabs attached to heat-sink.



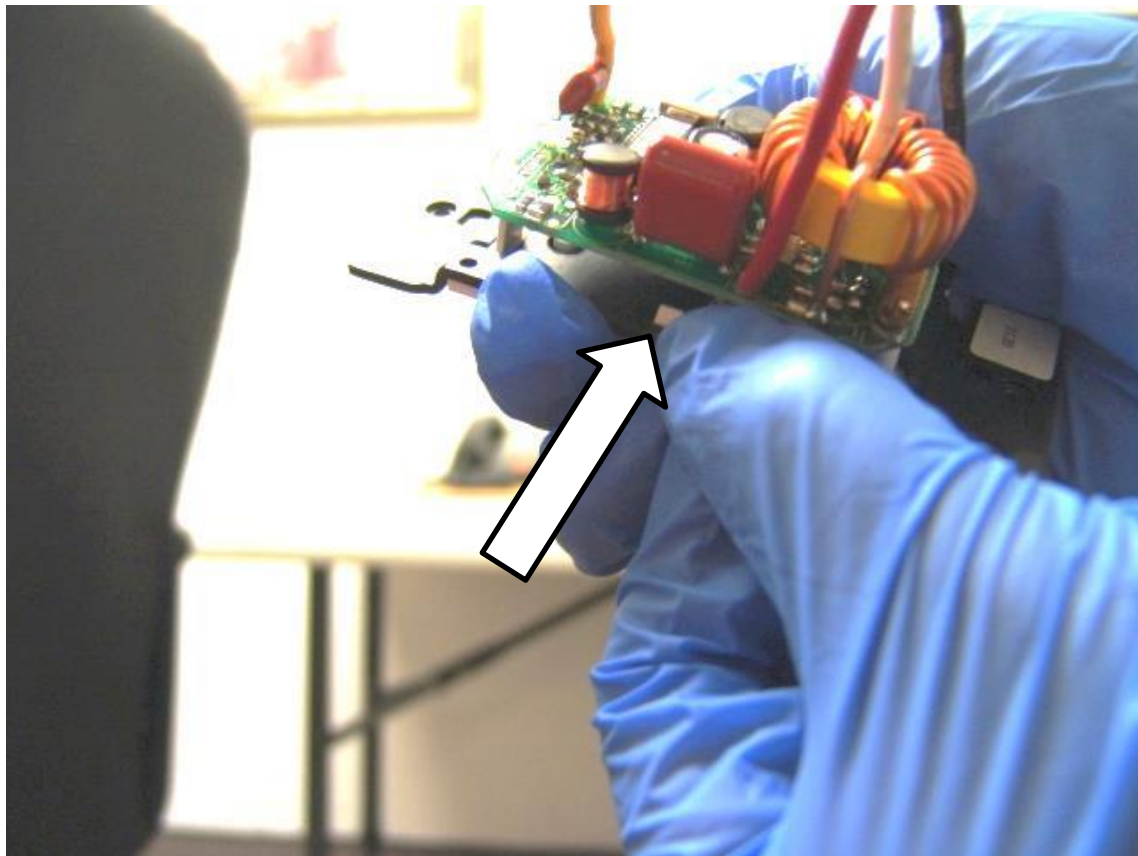
3. Using your thumb, carefully detach the top lock-tab that's locked on the circuit board.



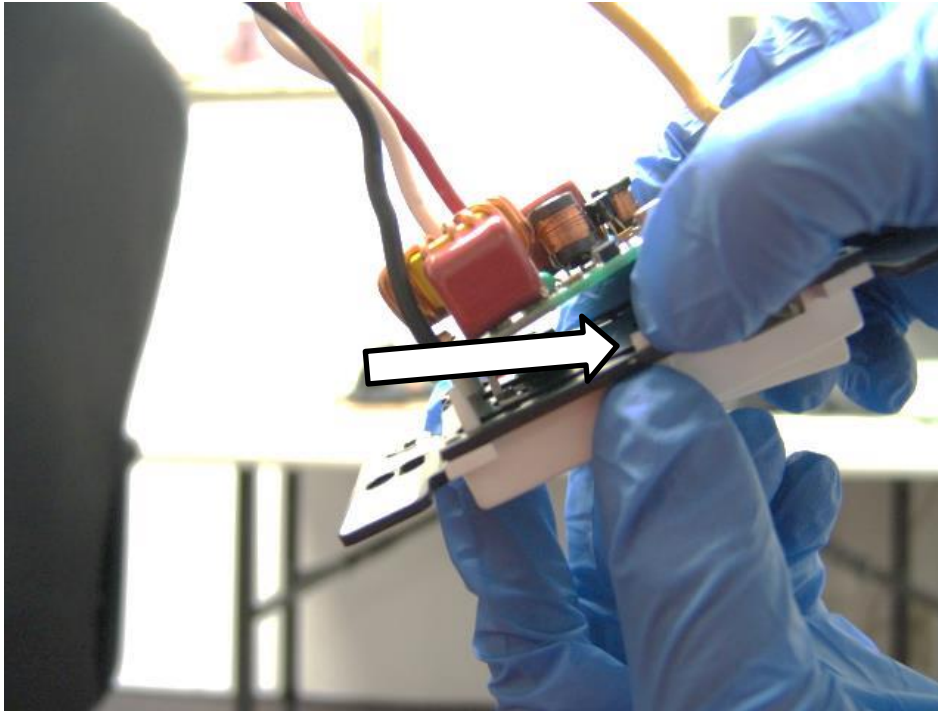
4. Once the top lock-tab is detached, the bottom lock-tab is still attached. Use your hand to grip the circuit board; the other hand grips the heat-sink, slighting twist to left to unlock the lower lock-tab. There will be a slight click sound. Be careful not to twist too much to cause the triac legs to break.



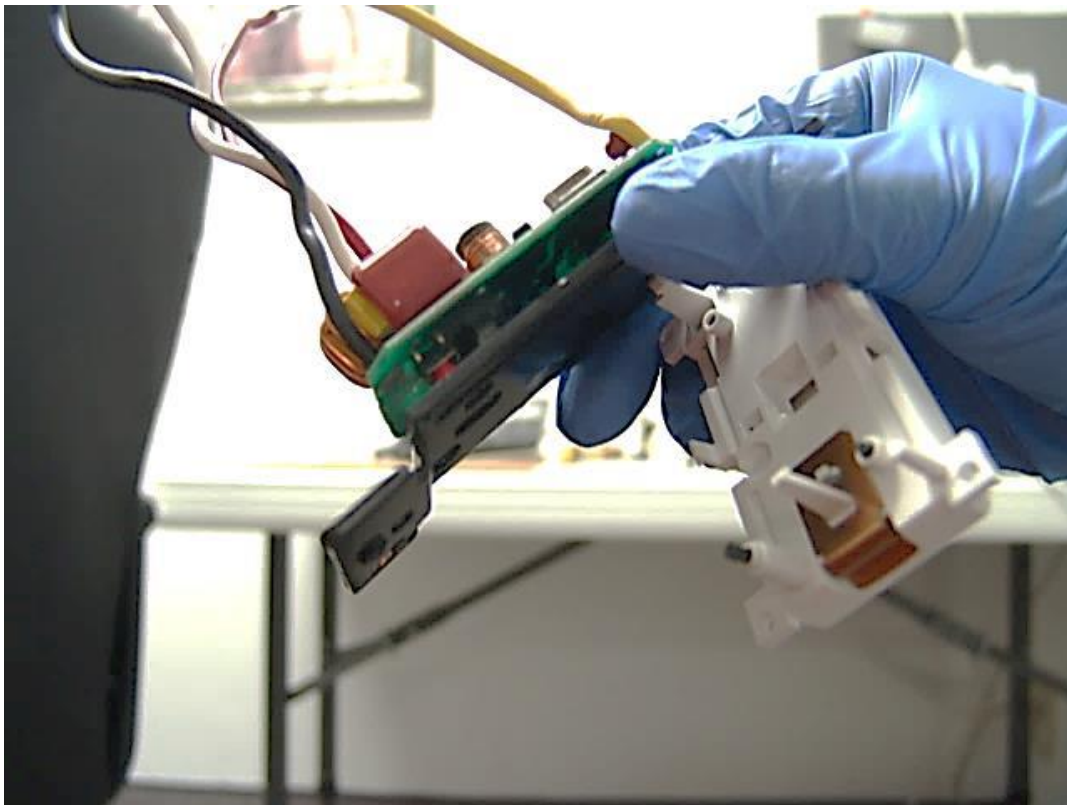
5. Once you notice lower lock-tab is detached from the circuit board, use your thumb to detach (press in) one of the side lock-tabs that clips to the heat-sink.



6. Repeat the same for the other side of the lock-tab.

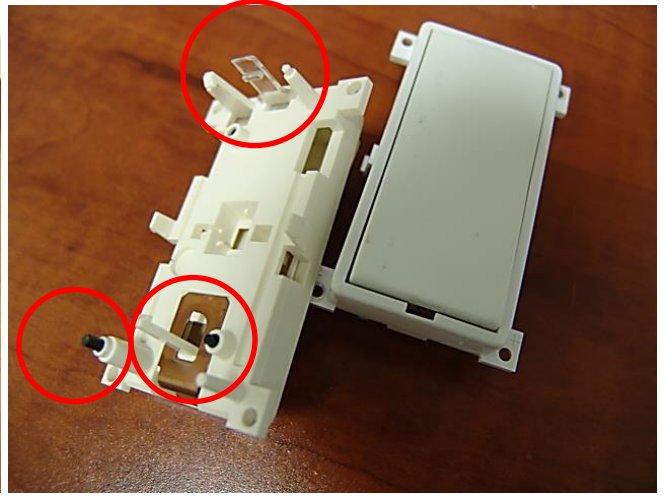


7. The plastic-set is now off. Remove the light pipe, metal clip, and black plastic rod.



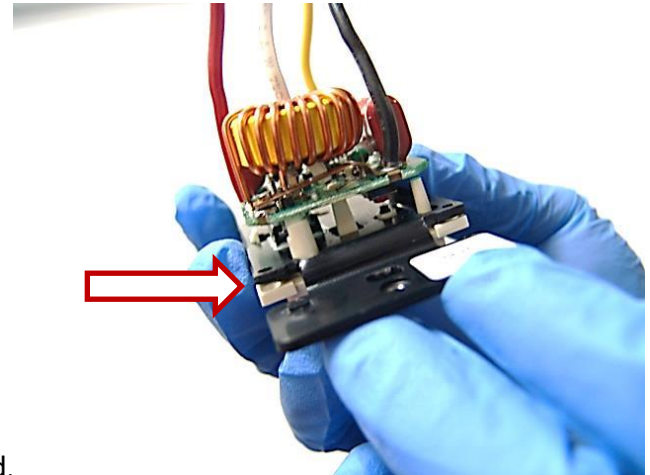
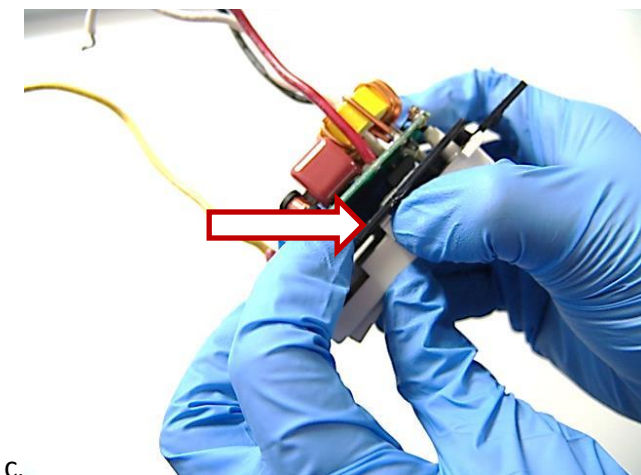
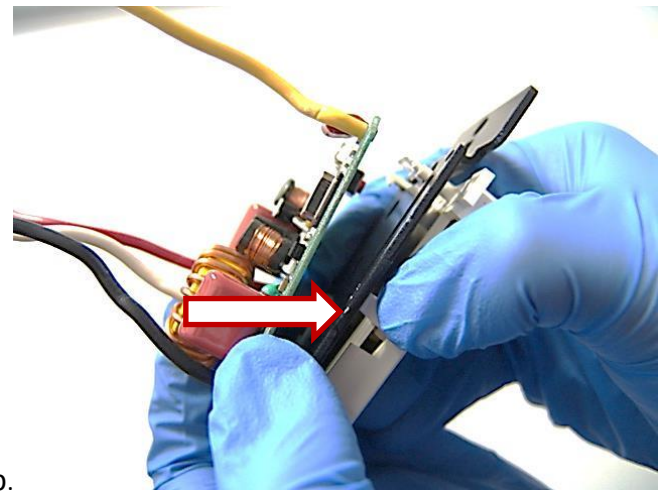
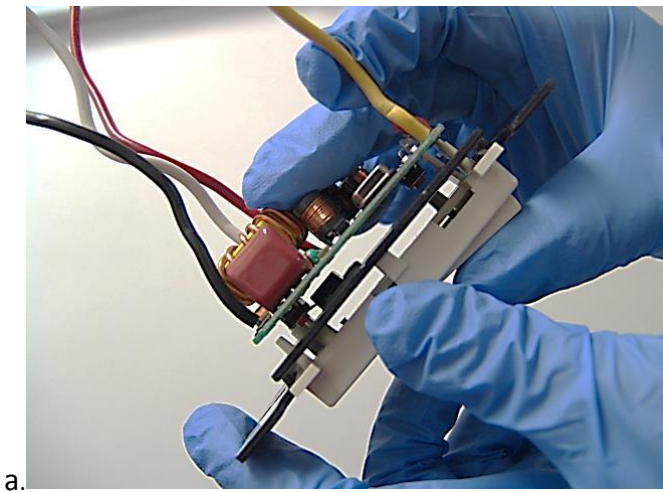
Attaching the plastic-set replacement

1. Remove the metal clip (**WS1Ds only**), black rod (**WS1Ds only**) and light pipe from the previous rocker and place them in into the rocker of color choice. Lock the bottom rocker to secure the metal clip

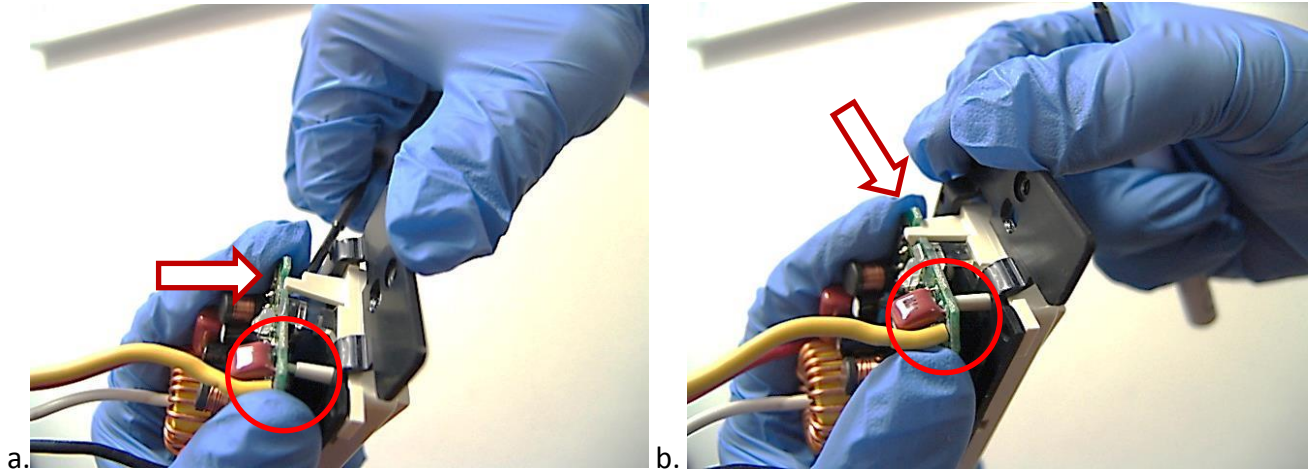


2. Align the plastic-set to the heat-sink, insert one of the side lock-tab first, and then press in the other side for attachment.

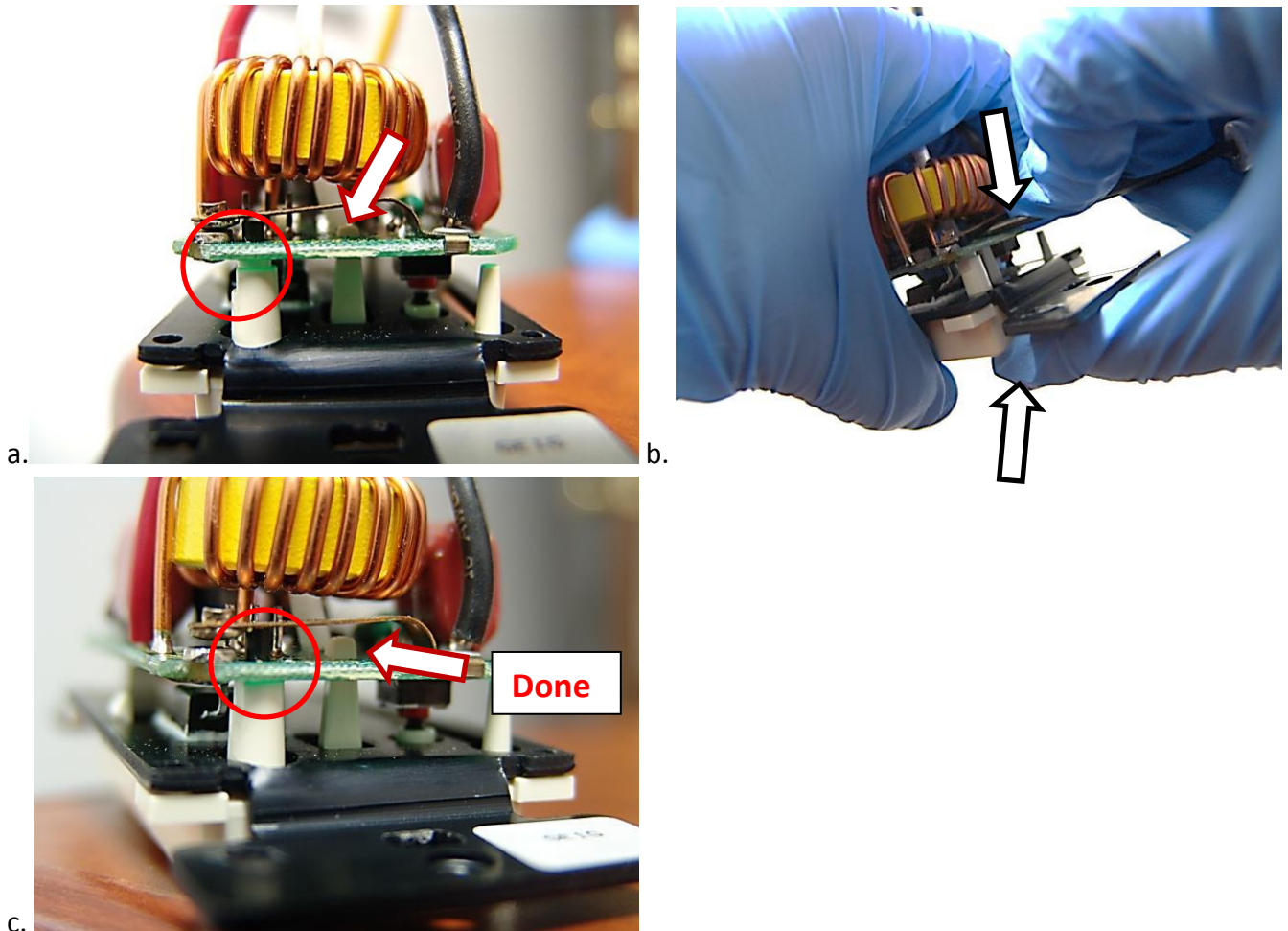
Note that the plastic set probably won't sit coincide with the heat-sink. That's okay.



3. Grip the unit securely, using the flat-head screw driver, slightly pry to stretch the top lock-tab outward a little, press the circuit board down so the lock tab will lock onto it. Make sure the small plastic leg aligns with the tiny hole of the circuit board (**circled below**)



4. At the bottom side, the bottom lock-tab is probably sitting 80% through the hole (**arrow pointed in picture a**). Align the circular tubing of the plastic-set with the hole on the circuit board (**circled below in picture a**). Utilize the flat-head screw driver to press onto the circuit board (right under the toroidal inductor) while your thumb presses against the plastic-set to lock everything tight (**see picture b and c below**)



5. Reassemble the back cover, tighten the corner screws (lightly), retest the rockers several times to make sure they click properly and can lock the bottom rocker to OFF position (WS1D only). Review step 3 and 4 if necessary.