

## Five reasons to purchase the T24 timer from Powerline Control Systems

---

Many jobs need a basic timer to control one or more lighting circuits and there are many makes and models you can choose from. Here are five reasons you should consider when making that choice.

### Reason One: Today's job done and ready for changes tomorrow



You have a job with requirements that need a timer. You can purchase a timer from several different manufacturers. Some timer manufacturers have many different products in their timer line. Some have simple clock time scheduling and others have astronomical timers that make possible scheduling based upon sunrise and sunset. Some timers have scheduling systems that can take into account the days when a facility is open and closed – what we call calendar scheduling. Still others have inputs for occupancy sensors and switches. Finally,

some offer various forms of remote access to change the schedule. What do you do? Do you install only what you need today or what you need today plus allow for the possibility of needed changes due to regulation and client requests?

The T24 Timer contains all the features in the most expensive timers from other companies at a price point competitive with their lower cost – and with many fewer features - timers.

While the T24 timer was designed to meet the requirements of California Title 24, similar regulations are being adopted in other states. Clients and lighting designers are requesting energy saving as part of the specifications for installations today regardless of regulatory requirements.

### Reason Two: The best solution for multi-level lighting

Most new and retrofit installations are using LED lighting. It's cost effective in terms of energy use and maintenance. It's modern and new. It's what clients have come to expect and what is being installed today.



One of the advantages of LED lighting is that it can be set to different levels. And even if you are not using the full range of dimming just having a full bright and half-light gives you a range of options. For example, an outdoor sales lot where you need excellent illumination during business hours and also need nighttime security lighting at a lower level of illumination.



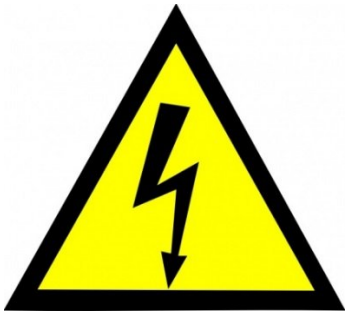
19201 Parthenia St. Suite J  
Northridge, CA 91324  
P: 818.701.9831 F: 818.701.1506  
pcssales@pcslighting.com  
www.pcslighting.com

## Five reasons to purchase the T24 timer from Powerline Control Systems

---

The T24 timer offers a way to control, with the addition of a tiny low cost module added to a fixture, all fixtures on a circuit to one of four pre-selected levels plus OFF. This is not implemented by low reliability wireless or PLC message control – these can require extensive commissioning - but rather by a patented method of using the timer relays to communicate with the fixture modules on the timer circuit.

### Reason Three: 120 or 277 Voltage Support



The T24 Timer and the T24 modules installed in fixtures operate on all the usual voltages found in residential and light commercial installations. For dimming at the higher voltages this can be especially problematic for installers and designers as manual dimmers just aren't available for higher voltages.

If you are installing in a commercial installation using a higher voltage, then the T24 timer will fully operate and provide multi-level illumination for hardscape lighting effects or when needed for a nighttime security illumination mode.

PCS has a Windows tablet application – others in development – that operates in conjunction with the T24 Timer and T24 Network Adapter to remotely control lighting circuits. This creates a simple low-cost lighting control system that operates in the palm of your hand from anywhere.

### Reason Four: Occupancy Sensors and Switch inputs



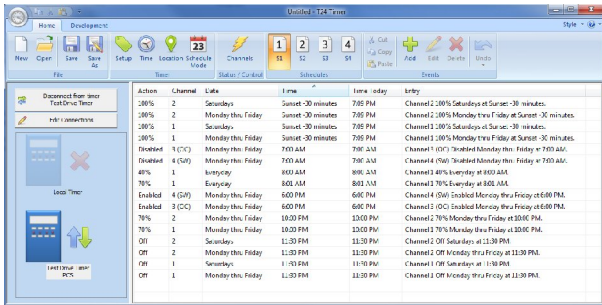
The T24 timer, in addition to control circuits, can dedicate one or more of its channels to the input of an occupancy sensor or switch. This allows creation of an efficient lighting control system where the timer controls the lighting based upon a schedule but still allows for the “after hours” needs by using an occupancy sensor or wall switch. The T24 timer is California Title 24 compliant by implementing the required 2-hour override for these inputs.

If you didn't have a timer with these input capabilities, for each of your lighting fixtures you would have to choose a fixture that includes an occupancy sensor in it. This can be a major cost addition. One or more

# Five reasons to purchase the T24 timer from Powerline Control Systems

occupancy sensors can be connected to the T24 timer and, like the output circuits, can be scheduled for when they are active and inactive. Better function and a lower cost.

## Reason Five: Software and Remote Access



Go ahead and admit it: We have all had problems setting up a schedule in a timer using the timer display, a menu system, and buttons. Why? Because it is hard to create a system that has such a limited set of inputs – a few lines of text and a few buttons – for such a complex operation.

The T24 timer does have a menu system for creating and modifying the timer schedule and we like to think it isn't hard

to use but we know that it will never be “easy as pie”.

The T24 timer includes with it, at no additional cost, the T24 software. This Windows based software allows for a USB connection to the timer and once connected lets you configure schedules, the calendar, and all timer features right from your laptop. No difficult menus with obscure abbreviations because of the limited number of characters in the display.

With the addition of the optional T24 Network Adapter, the T24 timer can be securely accessed remotely using the same T24 software to view and modify all aspects of the timer and schedule. Imagine getting a change request from the client to modify a schedule and not having to drive to the job site and work in the poorly lit and heated wiring room but instead make the changes remotely from the comfort of your office. Software access, included in the base model of the T24 timer is only available from other timer manufacturers at the highest end of their timer line.

For more information about the T24 Timer see [www.T24Timer.com](http://www.T24Timer.com)