

Quick Start Guide

PulseWorx Gateway

PGW



FUNCTION

The PulseWorx Gateway is a Powerline Interface Module much like our PIM-R RS-232 version that contains an IP Web server and a Timed Event Controller. This all-in-one device makes it easy to enable UPStart Configuration Software or other IP based device to communicate with a UPB network and devices via a hardwired or wireless LAN network or even over the internet.

The PGW is simple to install – just plug it in to any standard 120VAC wall outlet and connect a CAT-5 cable between it and a network. The long distance capability of a network and internet makes it possible to locate the PGW virtually anywhere on site. The PGW is securely accessed with an assigned port while username and password protection is enforced upon connection. This enables remote connection of UPStart to a PulseWorx/UPB system to access and update an installation or the use of smart phones or tablets with the appropriate applications. No additional wiring is required and no radio frequency signals are used for communication.

IMPORTANT SAFETY INSTRUCTIONS

When using electrical products, basic safety precautions should always be followed, including the following:

1. READ AND FOLLOW ALL SAFETY INSTRUCTIONS.
2. Keep away from water. If the product comes in contact with water or other liquid, turn off the circuit breaker and unplug the product immediately.
3. Never use products that have been dropped or damaged.
4. Do not use this product outdoors.
5. Do not use this product for other than its intended purpose.
6. Do not cover this product with any material when in the "Discover PulseWorx Gateway" button.
7. This product uses a grounded outlet to reduce the risk of electric shock. These plugs and sockets fit only one way. If they do not fit, consult an electrician.
8. SAVE THESE INSTRUCTIONS.

INSTALLATION

The PGW is designed for indoor use with a router or hub connected to a network. To install the PGW module follow these steps:

1. Connect an Ethernet cable (sold separately) between the PGW's RJ45 connector and any open port of the router, hub or network.
2. Plug the PGW into any grounded wall outlet. The Status LED on the front of the unit should start blinking and then stay solid blue.
3. The two Network LED's on the RJ45 connector should be solid orange and blinking green once on line.

Status LED Indications

The PGW contains a bi-color (blue/red) Status LED that will also give a visual indication of what UPB information is currently on the powerline.

Blue: No UPB Signal

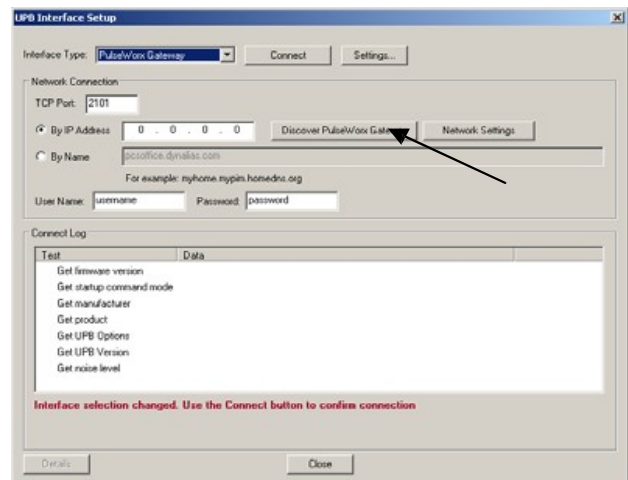
Magenta: Received a UPB Message

Red: Transmitted a UPB Message

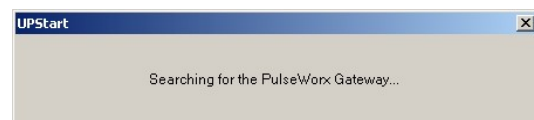
CONFIGURATION

The PGW is the perfect interface device for use with PCS' UPStart Configuration Software.

To use the PGW with UPStart Press the "Configure" button in the "Powerline Interface" panel in the "Network" tab to bring up the UPB Interface Setup dialog.



Select the "PulseWorx Gateway" as the Interface Type and then press use.



Quick Start Guide

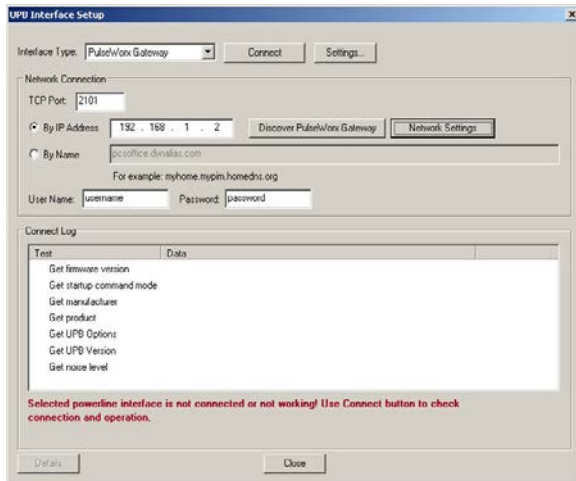
PulseWorx Gateway

PGW



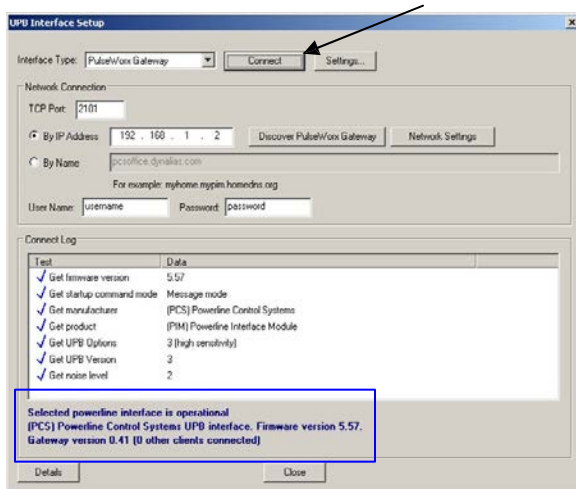
UPStart will automatically locate the PGW on your network and fill in the IP address. NOTE: The PGW is shipped in DHCP mode.

If the IP address does not show up in the "By IP Address window", re-click the "Discover PulseWorx Gateway". If the PGW can not be located, there might be issues with either the network or possibly the PGW.



OPERATION

When the PGW is located and an IP address has been assigned, you can now connect UPStart. Click on the Connect button.



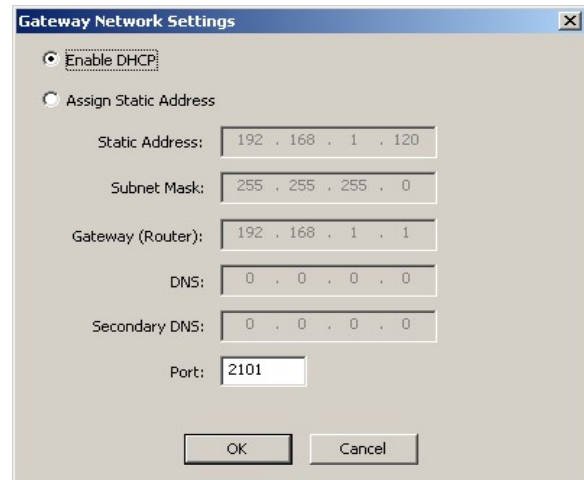
When the communication path is operational, UPStart reads the firmware version and other items and displays what was read.

"Selected powerline interface is operational" will be visible upon connection.

Setting the IP Address

Now that you are connected to the PGW select "Network Settings."

At this point you have a choice to leave the device in DHCP mode, use the assigned IP address or set your own address.



Enter the IP address, subnet mask, and default gateway to configure the PGW on your network. You may also change the access port on your router. **Note: We recommend that it is outside of DHCP pool so its network address stays the same. The default router port is 2101. If you assign a static address you must disconnect from UPStart and then power cycle the Gateway for the IP address to take effect.**

To close the Gateway Network settings click OK.

To close the UPB Interface Setup dialog window click the Close button.

LIMITED WARRANTY

Seller warrants this product, if used in accordance with all applicable instructions, to be free from original defects in materials and workmanship for a period of five years from the date of purchase. Refer to the warranty information on the PCS website (www.pcslighting.com) for exact details.

