

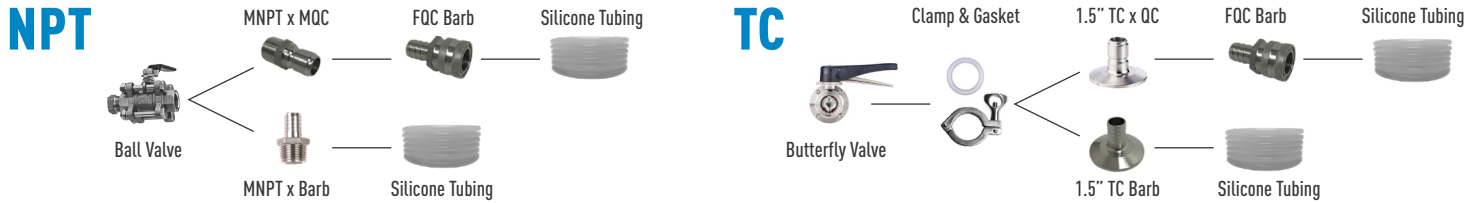


# CUSTOM KETTLE BUYER'S GUIDE

## MASH TUN

The mash tun is where you add the grain to the strike water, on a HERMS system you will recirculate the mash through the HLT to maintain temp. At the end of the mash you'll sparge with clean water from the HLT to ensure you get all the sugar from the grain!

## FITTING OVERVIEW



## PORTS NEEDED

### A. Drain Port

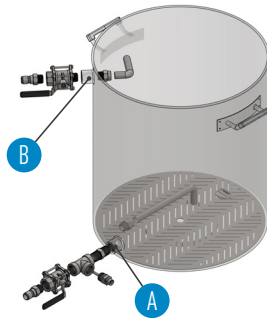
- Used to drain liquid from the kettle.

### B. Recirc/sparge port

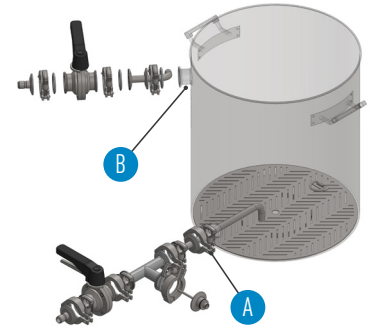
- Used to recirculate wort to keep even temperatures and increase efficiency during mash. Used to rinse wort during sparge.

*\*All ports need a valve and fitting of your choice plus silicone tubing. For a fitting overview, please see above.*

## NPT



## TC



## MASH TUN NPT CHECKLIST

2x Ball valves

False Bottom (includes center pickup and push-to-connect fitting)

- Helps create a grain bed and filter wort, leaving you with clear wort going into your boil kettle

Side pickup tube (includes push-to-connect fitting)

- Acts as a sparge arm
- We recommend attaching 2' of tubing for even circulation

Silicone tubing (not pictured)

2x Fittings

- 2x MNPT x MQC and 2x FQC Barb

**OR**

- 2x MNPT x barb

## MASH TUN TC CHECKLIST

2x Butterfly valves

7x 1.5" TC clamp

7x 1.5" TC gasket

Spike+ False Bottom (includes center pickup, clamp, and gasket)

- Helps create a grain bed and filter wort, leaving you with clear wort going into your boil kettle

Spike+ Side pickup tube

- Acts as a sparge arm
- We recommend attaching 2' of tubing for even circulation

Silicone tubing (not pictured)

2x fittings

- 2x 1.5" TC x MQC and 2x FQC Barb FQC x Barb

**OR**

- 2x 1.5" TC Barb

*\* Note: A port can be added to the front if you would like to attach a thermometer to make this a direct fire setup.*