

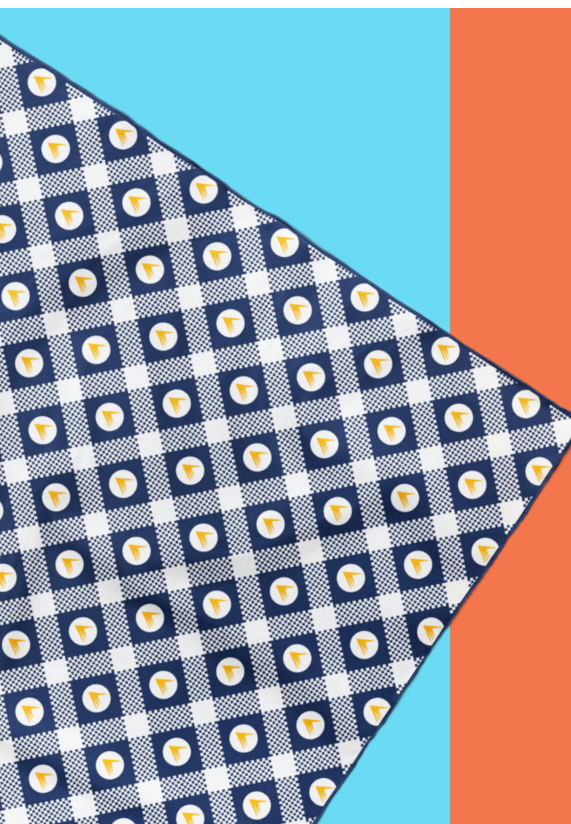
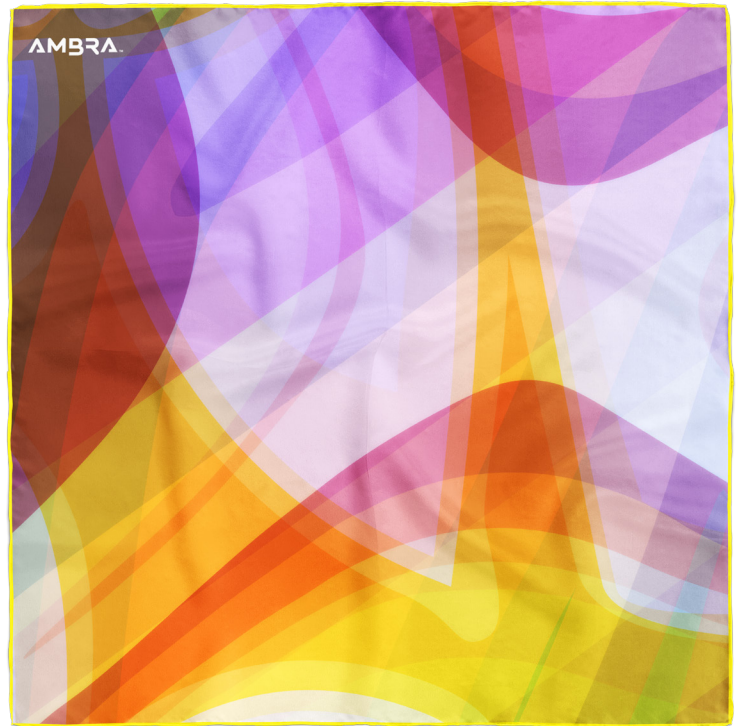
Square Scarves

(4T2V2W)

QTY	1-4	5-9	10-24	25-49	50-99	100-249	250-499	500-999
PRICE	\$50	\$41	\$38	\$30	\$25	\$22	\$20	\$19

Description

- Made in USA
- 28" x 28"
- Full-color sublimation
- Fabric: Lightweight poly chiffon
- Single-sided
- Finely finished with a pearled edge



Details

Made with a silk-like lightweight poly chiffon.

The pearled edge on our chiffon scarves is heavy threading that prevents fraying, helps provide structure, and adds a complementary accent color.

We cannot accommodate specific color pearled edge requests for orders below 50 scarves. Due to limited thread color options, we cannot PMS match pearled edge thread, but can find the closest approximate match.

Design Tips

Artwork for scarves can be prepared on artboards sized to the finished dimensions plus an additional inch on all sides to account for the bleed and trim.

No physical tags can be affixed to our scarves at this time. Printed tags can be added to your design at no extra cost.

We advise against including borders in artwork for scarves due to variations in the finished edge on these products.

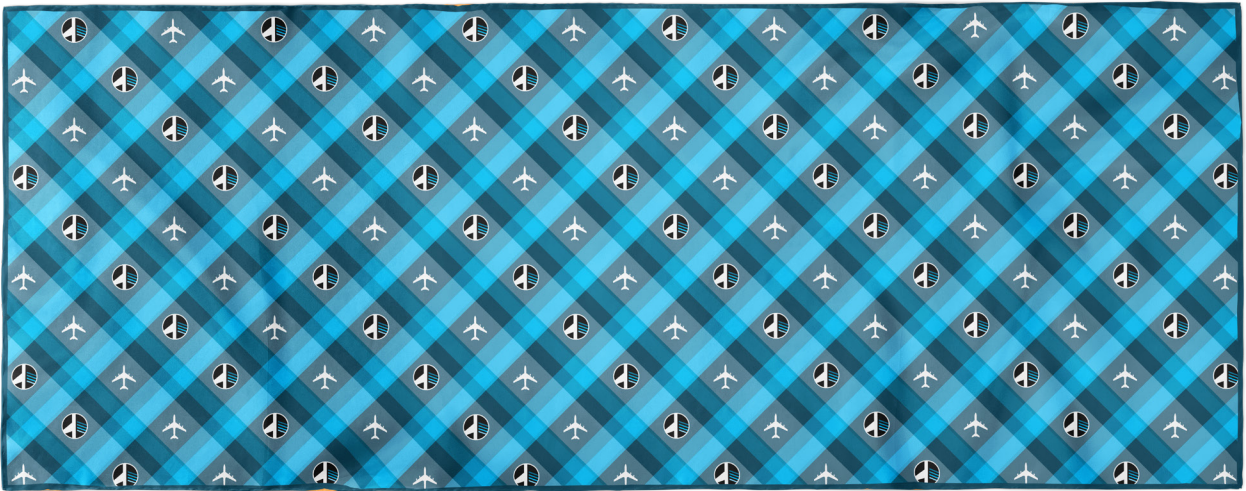
Rectangle Scarves

(4T2V2W)

QTY	1-4	5-9	10-24	25-49	50-99	100-249	250-499	500-999
PRICE	\$50	\$41	\$38	\$30	\$25	\$22	\$20	\$19

Description

- Made in USA
- 24" x 72"
- Full-color sublimation
- Fabric: Lightweight poly chiffon
- Single-sided
- Finely finished with a pearled edge



Details

Made with a silk-like lightweight poly chiffon.

The pearled edge on our chiffon scarves is heavy threading that prevents fraying, helps provide structure, and adds a complementary accent color.

We cannot accommodate specific color pearled edge requests for orders below 50 scarves. Due to limited thread color options, we cannot PMS match pearled edge thread, but can find the closest approximate match.

Design Tips

Artwork for scarves can be prepared on artboards sized to the finished dimensions plus an additional inch on all sides to account for the bleed and trim.

No physical tags can be affixed to our scarves at this time. Printed tags can be added to your design at no extra cost.

We advise against including borders in artwork for scarves due to variations in the finished edge on these products.



Infinity Scarves

(4T2V2W)

QTY	1-4	5-9	10-24	25-49	50-99	100-249	250-499	500-999
PRICE	\$50	\$41	\$38	\$30	\$25	\$22	\$20	\$19

Description

- Made in USA
- Size: 9" wide, 57" circumference
- Full-color sublimation
- Fabric: Poly crepe de chine
- Single-sided print with the appearance of being double-sided



Details

Made with a super soft silk-like poly crepe de chine.

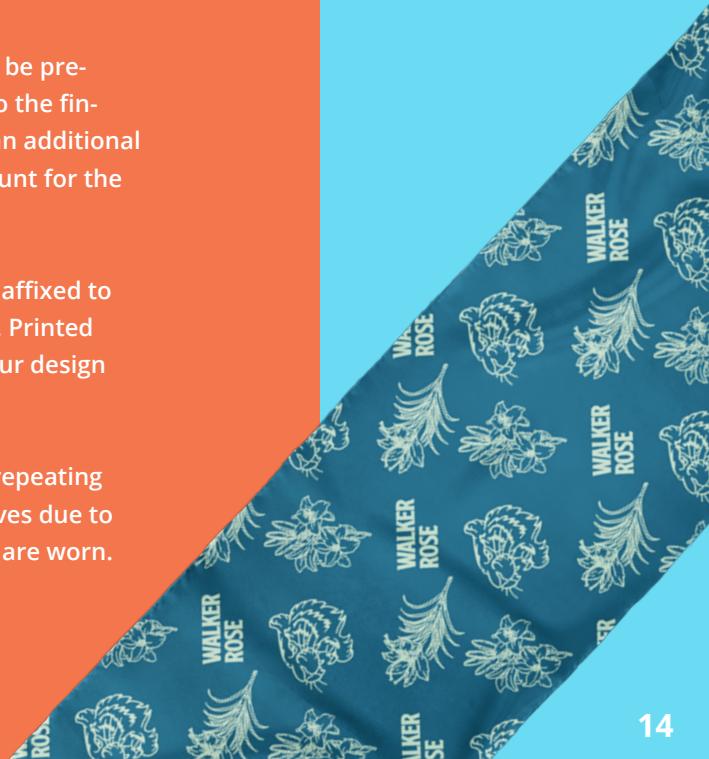
Infinity scarves are sewn into a continuous loop. If you are looking for a double-sided print, we recommend choosing this style since it gives the appearance of being printed on both sides.

Design Tips

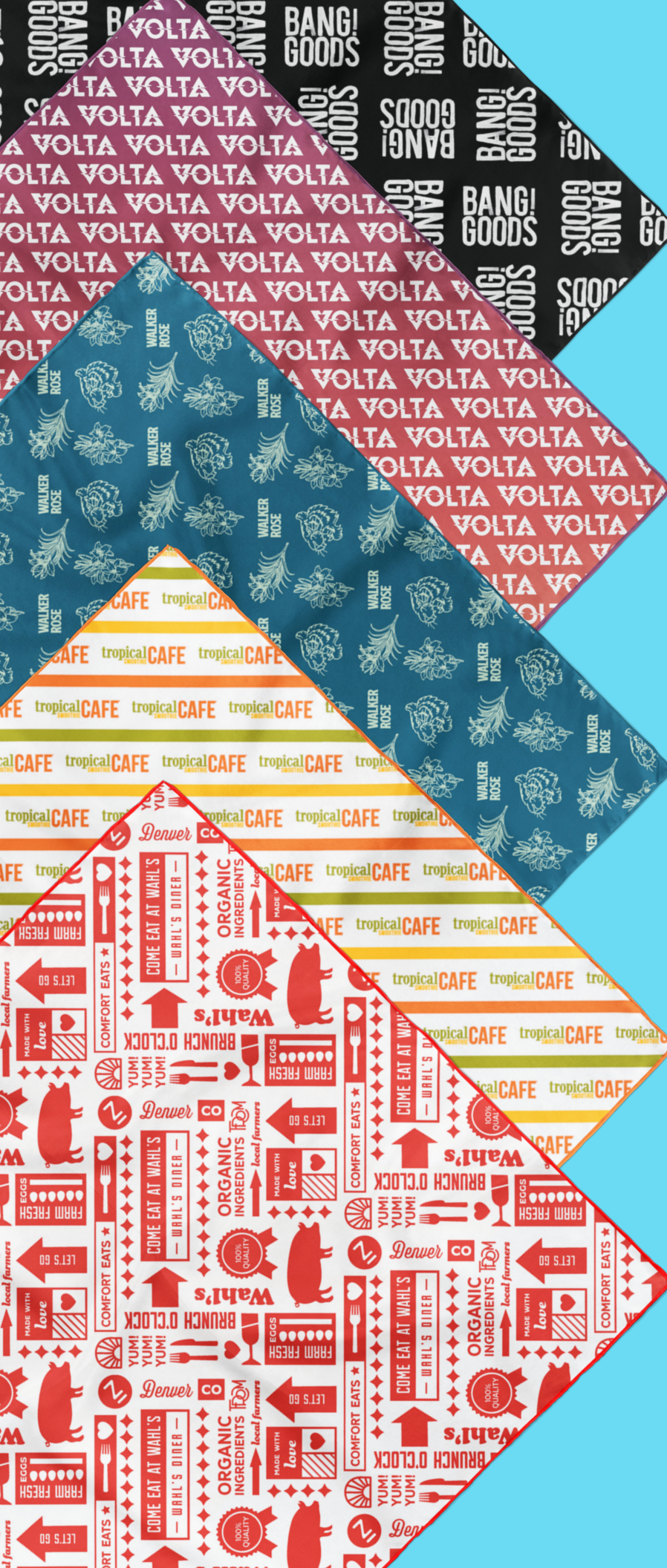
Artwork for scarves can be prepared artboards sized to the finished dimensions plus an additional inch on all sides to account for the bleed and trim.

No physical tags can be affixed to our scarves at this time. Printed tags can be added to your design at no extra cost.

We advise against non-repeating designs for infinity scarves due to differences in how they are worn.



Scarves



Use-cases

- Employee Recognition
- Brand Launches
- Trade Shows & Event Branding
- Themed Days - Doctor's Day, Derby Day, etc.

Industries

- National & Regional Associations
- Real Estate
- Medical & Health Tech
- Finance