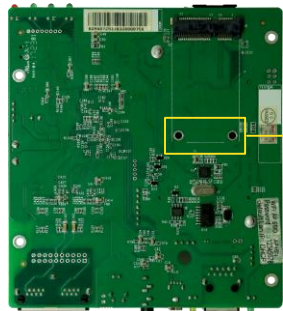


# Taurus Series Multimedia Players

## 4G Module Installation Guide

Note: Please select different installation methods according to the types of the board, as shown in the figures below (here the T3 is taken as an example).



Without welded copper cylinders on the back  
Select installation method 1.



With welded copper cylinders on the back  
Select installation method 2.

### Installation Method 1

**1** Prepare components.

- M2×12 round head
- M2
- M2
- 4G module

**2** Remove the core-board.

**3** Insert and fasten the screws for installing the 4G module.

Flat washers on the front  
Nuts on the back

**6** Mount the core-board.

**5** Fasten the 4G module.

Connect the 4G antenna to connector 1 (MAIN)  
Fasten the 4G module with nuts.

**4** Mount the 4G module.

### Installation Method 2

**1** Prepare components.

- M2.5×4 round head
- 4G module

**2** Mount the 4G module.

**3** Insert and fasten the screws for installing the 4G module.

**Tx model:** Connect the 4G antenna to connector 2 (MAIN).  
**TBx model:** Disconnect the 4G antenna from connector 1 and then connect it to connector 2 (MAIN).  
Fasten the 4G module with screws.