



DVI Sync Sending Card S20

Product Specification

Version Number: Ver.1.1

Statement

Dear user friend, thanks for choosing Shanghai Xixun Electronic Technology Co., Ltd. (hereinafter referred to as Xixun Technology) as your LED advertising equipment control system. The main purpose of this document is to help you quickly understand and use the product. We strive to be precise and reliable when writing the document, and the content may be modified or changed at any time without notice.

Copyright

The copyright of this document belongs to Xixun Technology. Without the written permission of our company, no unit or individual may copy or extract the content of this article in any form.

Trademark



is a registered trademark of Xixun Technology.

Update Record

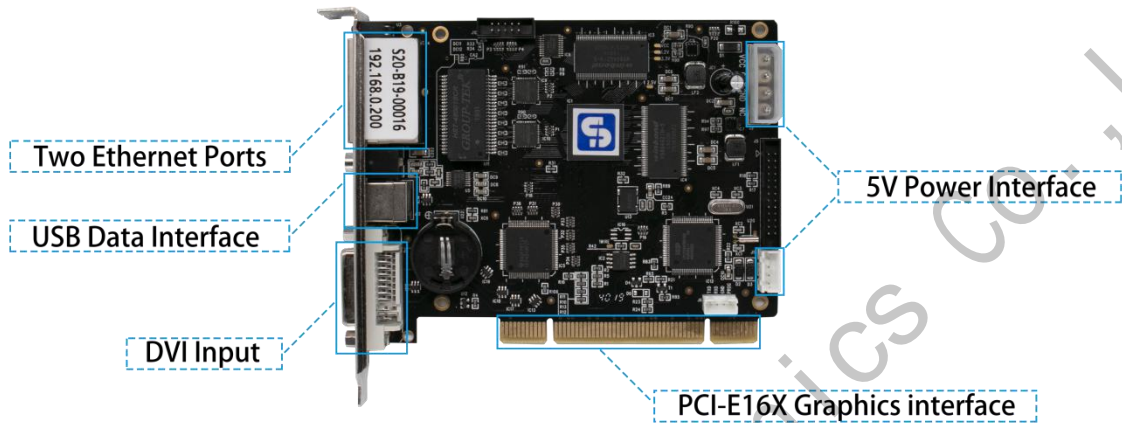
NO.	Version	Remark	Date
1	Ver.1.0	First version	2018.08.20
2	Ver.1.1	Modify images	2019.03.14

Shanghai Xixun Electronics Co., Ltd.

Functions

1. One DVI input;
2. Two Ethernet output;
3. USB port, support sending card cascading on one computer;
4. 640×480、800×600、1024×768、1280×1024、1280×720、1280×800、
5. 1366×768、1600×1200、1920×1080、2048×1152、2560×960, Support
6. a variety of resolution: 640×480, 800×600, 1024×768, 1280×1024,
7. 1280×720, 1280×800, 1366×768, 1600×1200, 1920×1080, 2048×
8. 1152、2560×960; Also support resolution readback function;
9. Support 1.3 million pixels with one sending card, 0.65 million pixels with one Ethernet port. Position of the picture can be set to any area;
10. 3 ways to power up;
11. Support to restore chrome ;
12. Support DVI dual backup function;
13. One audio input by 3.5mm headphone jack.

Interface Annotation And Definition



Port Definition:

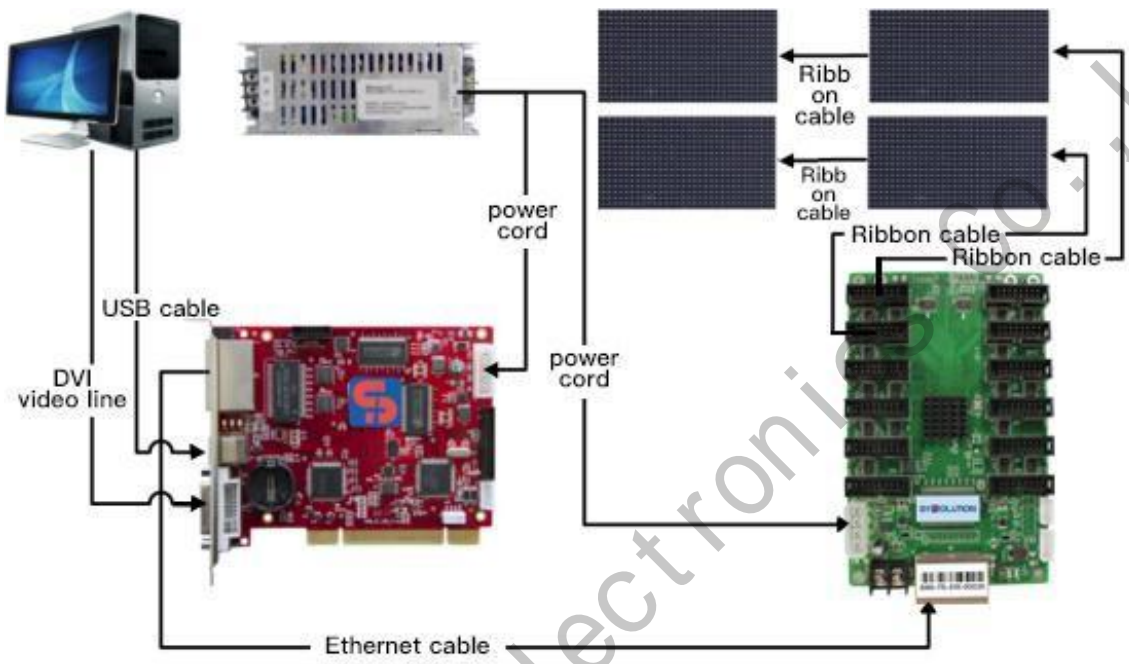
J3 Definition

Pin	1	2	3	4
Definition	VCC	GND	GND	NC

J13 Definition

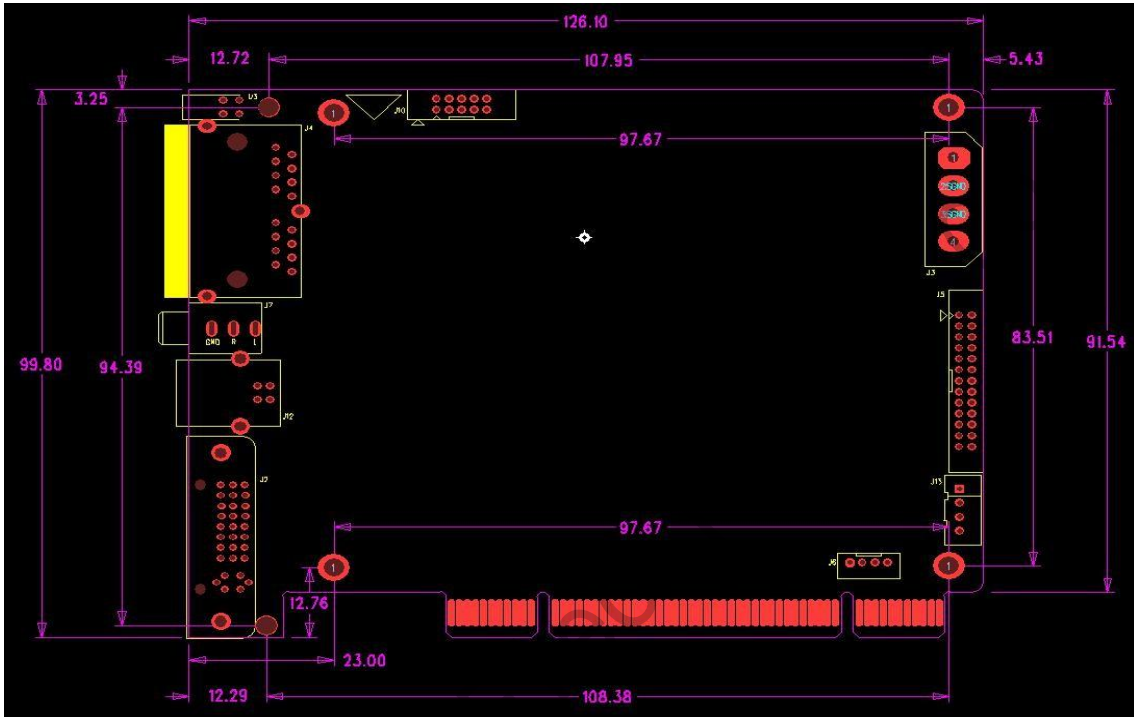
Pin	1	2	3	4
Definition	VCC	VCC	GND	GND

Connection



Shanghai Xixun Electronics Co., Ltd.

Dimension



Unit: mm

Shanghai Xixun L

Working Parameters

Working Current	0.6A (Typical value) 1.0A (Max)
LED Type	Single/double/full color
Number of receiving card (One Ethernet port)	240
Data Port	Gig E port
Protective Current	3.0A
Working Voltage	3.5V – 6V
Working Temperature	-10°C - 65°C
Working Temperature Limit	-20°C - 75°C
Working Humidity	0%-95%

Notes

1. Strictly prohibited to plug SIM card.
2. Strictly Prohibited to Plug Antenna.



Shanghai Xixun Electronics Co., Ltd